

# UC Irvine

## UC Irvine Previously Published Works

### Title

Spotlight on Sotorasib (AMG 510) for KRAS G12C Positive Non-Small Cell Lung Cancer.

### Permalink

<https://escholarship.org/uc/item/2z9123sh>

### Authors

Zhang, Shannon  
Nagasaka, Misako

### Publication Date



2021

### DOI

10.2147/LCTT.S334623

Peer reviewed

# Spotlight on Sotorasib (AMG 510) for *KRAS*<sup>G12C</sup> Positive Non-Small Cell Lung Cancer

Shannon S Zhang <sup>1</sup>  
Misako Nagasaka <sup>1-3</sup>

<sup>1</sup>Department of Medicine, University of California Irvine School of Medicine, Orange, CA, USA; <sup>2</sup>Chao Family Comprehensive Cancer Center, Orange, CA, USA; <sup>3</sup>St. Marianna University School of Medicine, Kawasaki, Japan

**Abstract:** Mutations in codon 12 of *KRAS* have been identified in 13% of non-small cell lung cancer patients. Developing targeted therapies against *KRAS*<sup>G12C</sup> mutation has proven to be challenging due to the abundance of GTP in the cytoplasm, rapid hydrolysis of GTP, and difficulty designing small molecules to achieve sufficient concentration for *KRAS* inhibition. Based on promising results in both preclinical and clinical trials, sotorasib, a novel *KRAS*<sup>G12C</sup> inhibitor, was given conditional approval by the FDA in May 2021. The Phase I portion of the clinical trial produced 32% confirmed response with 56% of patients with stable disease. About 91.2% of patients who received the highest dose of 960mg daily achieved disease control. The Phase II portion, which used 960mg daily dosing resulted in 37.1% of patients with confirmed response and 80.6% of patients with disease control. Both phase I and phase II had similar progression-free survival, in 6.3 months and 6.8 months, respectively. In both phases, grade 4 adverse events occurred in only one patient. The most common adverse events were elevations in LFTs, which down-trended upon dose reduction and steroid treatment. While the conditional approval of sotorasib was a major breakthrough for those patients harboring *KRAS*<sup>G12C</sup> mutations, resistance mutations to sotorasib are increasingly common. Many proposals have been made to address this, such as the use of combination therapy for synthetic lethality, which are producing encouraging results. Here, we explore in further detail the development of sotorasib, its efficacy, mechanism of resistance, and strategies to overcome these resistances.

**Keywords:** sotorasib, AMG 510, Lumakras, non-small cell lung cancer, CodeBreak 100, *KRAS*<sup>G12C</sup>

## Introduction

Rat sarcoma viral oncogene (*RAS*) is the oldest driver mutation identified in 1982 and consists of three isoforms: *KRAS*, *HRAS*, and *NRAS*.<sup>1</sup> Of these isoforms, *KRAS* is the most common, making up 85–90% of all *RAS* proteins. *KRAS* mutations exist in many cancers including pancreatic, colorectal and lung. While *KRAS* mutations are rare in certain lung cancers such as squamous cell carcinomas (SCC), they exist in 15–30% of all lung adenocarcinoma patients in the United States and are often associated with smoking, increased PD-L1 expression, and high tumor mutational burden.<sup>2</sup> Higher expression of PD-L1 was discovered in tumor and immune cell lines in *KRAS* mutant lung adenocarcinoma (37%), most notably in *KRAS*<sup>G12C</sup> and *KRAS*<sup>G12V</sup> cells compared to wild-type cells (18%).<sup>3</sup> Interestingly, *KRAS* mutations occur less frequently at less than ten percent of NSCLC in Asia due to a higher proportion of *EGFR* mutations. Different sub-types of mutations exist within the *KRAS* gene with most occurring in exon 2 or 3 (G12, G12, Q61).<sup>4</sup> *KRAS* codon 12 mutations, which comprise 91% of

Correspondence: Misako Nagasaka  
Department of Medicine, University of  
California Irvine School of Medicine,  
Orange, CA, USA  
Email [nagasakm@hs.uci.edu](mailto:nagasakm@hs.uci.edu)

*KRAS* mutations, are further divided into sub-types including G12C, V, D, A, S. The next most common *KRAS* mutation occurs on codon 13, which comprises 5% of *KRAS* mutations with sub-types C, D, and R. The remaining codon mutations in *KRAS* are infrequent (codon 61, 9, 14, 18, 19, 33, 88, 14, etc.).

Studies have been inconsistent regarding *KRAS* mutation's effects on metastasis and survival. Yu et al found that mutations in *KRAS* codon 13 led to shorter survival compared to mutations in *KRAS* codon 12.<sup>5</sup> Another study found that no significant difference in survival existed between patients with *KRAS* mutation versus wild type.<sup>6</sup> Contrarily, Goulding et al performed a meta-analysis, which suggested that *KRAS* mutation may be a negative prognostic marker for survival in patients with advanced NSCLC.<sup>7</sup>

Unfortunately, development of targeted therapies against the *KRAS* mutation has been largely unsatisfactory. The first-line treatment for *KRAS* NSCLC commonly includes immune checkpoint inhibitors with or without chemotherapy. However, effective second-line options for *KRAS* NSCLC that progress beyond first-line therapies are limited and include pemetrexed if not already given as part of a first-line regimen, docetaxel with ramucirumab, or docetaxel alone. Combination therapy with ramucirumab, an anti-VEGF2 inhibitor, and docetaxel has been shown to produce a median progression-free survival (PFS) of just 4.5 months and response of 23% in the REVEL trial.<sup>8</sup> Due to this reason as well as a lack of targeted therapies, *KRAS* NSCLC patients who fail first-line therapies often have poor outcomes.

Development of *KRAS*<sup>G12C</sup> inhibitors has been deemed difficult given GTP abundance in the cytoplasm and its rapid hydrolysis as well as difficulty designing targets that have high bioavailability and potency to inhibit *KRAS*. After multiple trials of drug development, sotorasib, otherwise known as AMG 510 or LUMAKRAS, a novel *KRAS*<sup>G12C</sup> inhibitor, was conditionally approved by the Food and Drug Administration (FDA) on May 28th 2021 and has shown promising results in both preclinical and clinical trials.

Three main molecular subgroups of *KRAS*<sup>G12C</sup> have been of interest and these include *KRAS*<sup>G12C</sup> with *STK11* mutations, *TP53* mutations, and Kelch-like ECH-associated protein 1 (*KEAP1*) mutations. The *STK11* gene encodes a serine/threonine protein kinase that acts as a tumor suppressor. In a single-institution retrospective study, the objective response rates (ORR) to first-line systemic therapy in

patients treated with PD-1 blockade were shown to be 7.4% in patients with *KRAS* and *STK11* co-mutation, 35.7% in patients with *TP53* and *KRAS* co-mutation, and 28.6% in patients with *KRAS* mutation alone.<sup>9</sup> Patients with *KRAS* also exhibited shorter PFS if *STK11* co-mutation was present. *KEAP1* mutation has been found in approximately 20% of *KRAS* mutant NSCLC.<sup>10</sup> *KEAP1* negatively regulates nuclear factor erythroid 2-like 2 (NRF2) and regulates the antioxidant response. This system depends on the pentose phosphate pathway (PPP) and glutaminolysis, which suggests that targeting either path may serve as a potential therapeutic approach. The use of sotorasib should also be studied further in *KRAS*<sup>G12C</sup> patients with *STK11*, *TP53*, or *KEAP1* co-mutation.

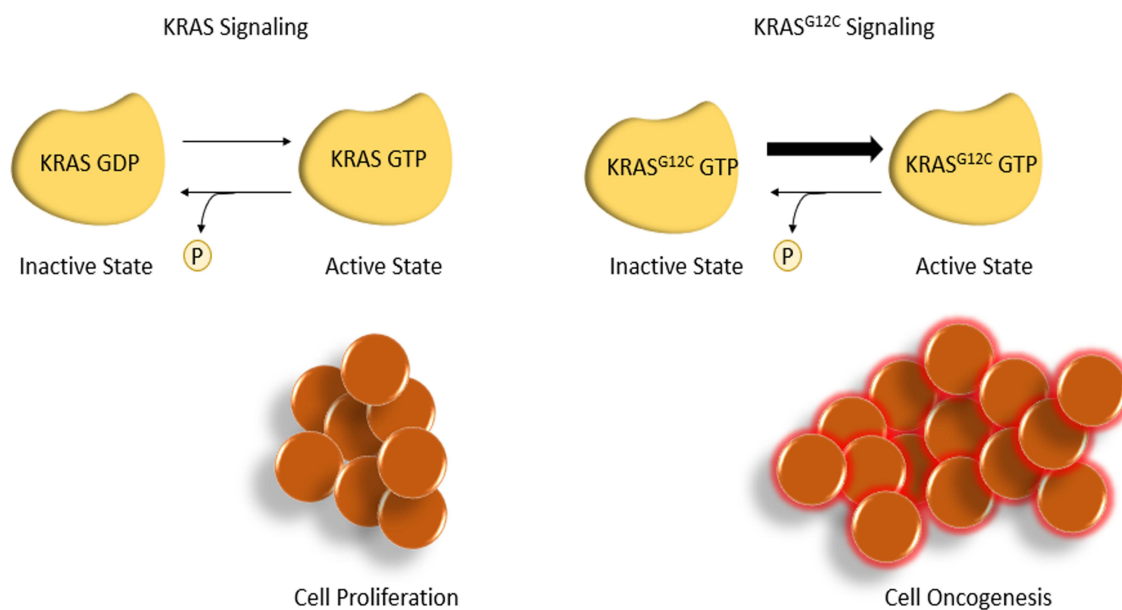
## Structure of Sotorasib

In 2013, Shokat et al studied the use of a covalent inhibitor to target cysteine 12 of *KRAS*.<sup>11</sup> Cysteine reactive libraries were screened for compounds that were modified to enhance oral bioavailability and maintain potency. ARS-1620 was the first covalent *KRAS*<sup>G12C</sup> inhibitor that demonstrated in vivo efficacy. In order for the compound to access the binding pocket, chemical groups such as quinazoline nitrogen were substituted to improve linkage. Many resulting compounds were created, however encountered issues shortly due to poor bioavailability, poor potency, and/or inability to completely restrict bond rotations. Concentration of GTP within the cell is abundant, which creates a challenging environment with competition against GTP in the hydrolysis domain of *KRAS*. After multiple adjustments were made, the (R)-38 compound, which was renamed as AMG 510, was created. It successfully demonstrated good activity in cellular assays, dose proportional plasma exposure, moderate permeability, and excellent oral bioavailability, and ultimately was approved as sotorasib.

Sotorasib binds to the inactive guanosine diphosphate (GDP)-bound *KRAS* via a covalent bond between cysteine 12 (C12) and the acrylamide warhead and non-covalent bonds between isopropylpyridine substituent and a cryptic pocket, which includes H95 (histidine), Y96 (tyrosine), and Q99 (glutamine). The pocket on the switch II region (S-IIP) is only present in an inactive GDP bound form and binds the molecular core.

## Pharmacodynamics

The *KRAS* protein alternates between a GDP-bound inactive form and a guanosine triphosphate (GTP)-bound



**Figure 1**  $KRAS^{G12C}$  signaling produces cell mutagenesis.

active state, with downstream effects on cell signaling and proliferation. A mutation in the  $KRAS$  codon 12 mutation impairs GTP hydrolysis, leading to a constitutively active state promoting cell proliferation. Sotorasib binds to the  $KRAS^{G12C}$  cysteine residue to lock the protein in its inactive form, inhibiting cell proliferation and promoting apoptosis (Figure 1). This residue is not present in wild-type  $KRAS$ , limiting off-target effects.

## Pharmacokinetics

The median time for sotorasib to reach peak plasma is one to two hours, with a mean elimination half-life of 5.5 hours (Table 1).<sup>12</sup> Despite this half-life, sotorasib is approved as a once daily dosing, possibly due to high-dose administration. It is metabolized by conjugation or oxidative metabolism via the cytochrome P450 family 3 subfamily A (CYP3A) enzyme located primarily in the liver and intestines. Thus, it should be used with caution in patients who take CYP3A4 inducers such as rifampin, phenobarbital, and carbamazepine, or inhibitors such as itraconazole. Acid reducing agents such as proton pump

inhibitors (PPIs) and H2 antagonists should also be used with caution with sotorasib, as they may decrease drug absorption. If co-administration of acid reducing agents cannot be avoided, four to ten hours should be given between the two drugs. It has been advised that women on sotorasib should not breastfeed children until one week after the final dose.

Per Amgen, sotorasib does not accumulate with multiple doses and increase in dose is less than dose proportional. AUC and Cmax both increased when sotorasib was given with high fat meal by 1.38 and 1.03 fold respectively. As this was a minimal change, sotorasib can be given with or without food.

## Preclinical Studies

In preclinical studies, Canon et al were able to demonstrate AMG 510 activity in both cell lines and murine models.<sup>13</sup> In cell viability assays, AMG 510 effectively inhibited cell growth with an encouraging half maximal inhibitory concentration (IC<sub>50</sub>) of 0.004 $\mu$ m to 0.032  $\mu$ m in almost all  $KRAS^{G12C}$  cell lines. Sotorasib favorably inhibited almost

**Table 1** Sotorasib Steady State PK Parameters

Dose (mg)	Sample Size (N)	Tmax (hr)	Cmax (ug/mL)	AUC
180	6	0.73	31.7	5.13
360	24	1	38.9	5.53
720	11	1.1	42.1	4.75
960	24	1.1	32.4	5.07

all phosphorylation of extracellular signal regulated kinase (ERK), located downstream of *KRAS* leading to tumor regression in mice with *KRAS*<sup>G12C</sup> tumors in a dose responsive manner. In addition, AMG 510 improved anti-tumor effects of chemotherapy and led to durable cures in eight out of ten mice. Of note, the immune system appeared to play an important role in the mechanisms of action of AMG 510. Interestingly, AMG 510 did not produce effects in mice that lacked T cells, suggesting that only mice with intact immune systems would benefit from AMG 510 as a monotherapy. The addition of an anti-checkpoint inhibitor to AMG 510 successfully induced sustained regression of tumor growth in most mice. Furthermore, mice that were previously cured with AMG 510 did not grow tumors when they were re-challenged with *KRAS*<sup>G12C</sup> cells, suggesting some level of adaptive immunity.

When evaluating toxicity, one preclinical study demonstrated that rats receiving 960mg sotorasib daily developed renal toxicity with necrosis and degeneration of kidney tubules, primarily at the proximal tubule.<sup>14</sup> Partial recovery of tubular damage was noted after two months. Other adverse effects in rats included decreased weight gain, leukocytosis, thrombocytosis, and hypocalcemia. One rat receiving 750mg/kg sotorasib developed seminiferous tubule degeneration. Radioactive AMG 510 injected into rat tissue showed extension to liver, kidney, thyroid, pancreas, and adrenal gland but demonstrated poor brain distribution.<sup>12</sup>

## Phase I Portion of the CodeBreak 100 Trial

The phase I portion of the CodeBreak 100 multicenter trial evaluated the use of sotorasib in 129 enrolled patients. Fifty-nine patients had NSCLC, 53 of whom were current or former smokers, 42 had colorectal cancer, and 28 patients had other tumor types. In the NSCLC group, patients who were 18 years or older with locally advanced or metastatic *KRAS*<sup>G12C</sup> NSCLC were included.<sup>15</sup> Patients with untreated brain metastasis, active systemic therapy within 28 days of sotorasib initiation, and/or radiation within two weeks of sotorasib initiation were excluded from the trial. The primary endpoint was safety, particularly dose limiting toxicities within 21 days of the first dose. Secondary endpoints included pharmacokinetics, objective response based on RECIST v1.1 criteria, duration of response (DOR), disease control, PFS, and duration of stable disease. Subjects

received a median of three lines of therapies prior to entering the trial and were divided into dose escalation cohorts of 180mg, 360mg, 720mg, and 960mg. Treatment was discontinued in 107 patients largely due to disease progression. Seventy-four patients received at least three months of treatment and 38 patients received at least six months of treatment.

In patients with NSCLC, 19 of the 59 patients achieved confirmed response and 33 patients had stable disease. In the 960mg cohort (N=85), 12 patients (35.5%) exhibited confirmed response and 31 patients (91.2%) had disease control (Table 2). About 71.2% of subjects had shrinkage of their tumor at week six during the first evaluation. The median time to response was 1.4 months with a median DOR of 10.9 months and median PFS of 6.3 months. In patients who exhibited response, the duration of response was at least three months in 11 patients, at least six months in six patients, and at least nine months in five patients.

**Table 2** Summary of Properties from Clinical Trials

<b>Preclinical Trial Properties</b>
IC50: 0.004µm to 0.032 µm
<b>Phase I Clinical Trial Properties</b>
Half-life: 5.5 hours Tmax: 1.1 Confirmed response rate: 35.5% Disease control: 91.2% Median time to response: 1.4 months Median DOR: 10.9 months PFS: 6.3 months Most common side effects: Diarrhea, nausea Patients with grade ¾ events: 11.6% Grade 3 events: Elevated ALT and AST, diarrhea, anemia, hepatitis, lymphopenia, elevated GGT, hyponatremia Grade 4 event: Elevated ALT
<b>Phase 2 Clinical Trial Properties</b>
ORR: 37.1% Disease Control: 80.6% Stable disease: 43.5% Progressive disease: 16.1% Median DOR = 11.1 months Median time to response: 1.4 months Median duration of treatment: 5.5 months PFS: 6.8 months Most common side effects: diarrhea, nausea, fatigue, arthralgia, elevated ALT or AST

**Abbreviations:** ORR, objective response rate; DOR, duration of response; PFS, progression-free survival; ALT, alanine aminotransferase; AST, aspartate aminotransferase.

The median duration of stable disease was four months. These results are superior to current therapies, which show a nine to 18% response to second- or third-line therapies and a median PFS of 2.5 to four months.<sup>16</sup>

Unfortunately, these results were not met in patients with other cancer types. Only three (7.1%) of the 42 colorectal cancer patients demonstrated confirmed response, with a median DOR of 5.4 months. In the “other” tumor types group, only four patients had confirmed response, all with different cancer types: pancreatic, endometrial, appendiceal, and melanoma. It would be of interest to explore these inconsistent results between cancer types and strategies to overcome this.

Overall, subjects experienced mostly grade one or two reversible toxicities. The most common adverse events were diarrhea and nausea. Fifteen patients (11.6%) had grade three or four treatment-related adverse events. Grade three events included elevation in alanine aminotransferase (ALT), diarrhea, anemia, elevated aspartate aminotransferase (AST), hepatitis, low lymphocyte counts, elevated gamma-glutamyl transferase (GGT), and hyponatremia. One patient experienced a grade four elevation in ALT, which returned to baseline after dose reduction and steroid treatment. There were no dose limiting toxicities or treatment-related deaths. From the phase I trial, sotorasib showed promising activity potentially superior to standard second- and third-line therapy in *KRAS* NSCLC with a fairly tolerable adverse event profile in patients with NSCLC harboring *KRAS*<sup>G12C</sup> mutations.

## Phase II Portion of the CodeBreak 100 Trial

The phase II portion of the CodeBreak 100 multicenter trial took place between the dates of August 2019 and February 2020.<sup>17</sup> This phase included subjects 18 years or older with locally advanced or metastatic *KRAS*<sup>G12C</sup> NSCLC who had disease progression after programmed death-1 (PD-1), programmed death ligand-1 (PDL-1), and/or a platinum-based chemotherapy. A total of 126 subjects, 117 of whom were current or former smokers, were included. Subjects were treated with 960mg sotorasib daily, based on the phase I results. Primary end points measured were complete and partial objective response. Secondary end points included the time to response, PFS, OS, and safety profile.

The median PFS was 6.8 months (95% CI: 5.1, 8.2), similar to the phase I PFS of 6.3 months (Table 2).

Objective response was seen in 46 (37.1%) patients, and disease control was achieved in 100 (80.6%) patients. Of the 46 patients with objective response, four had complete response (3.2%) and 42 had partial response (33.9%). Fifty-four had stable disease (43.5%), and 20 had progressive disease (16.1%). The median DOR was 11.1 months, median time to respond was 1.4 months, and median duration of treatment was 5.5 months. Shrinkage of tumor was observed in 102 patients (82.3%) with median best percentage decrease of 60% in diameter. Response was observed across all PD-L1 expression levels. Eighty-eight patients (69.8%) received therapy for at least 3 months, 60 patients (47.6%) for at least 6 months, and 41 patients (32.5%) for at least 9 months.

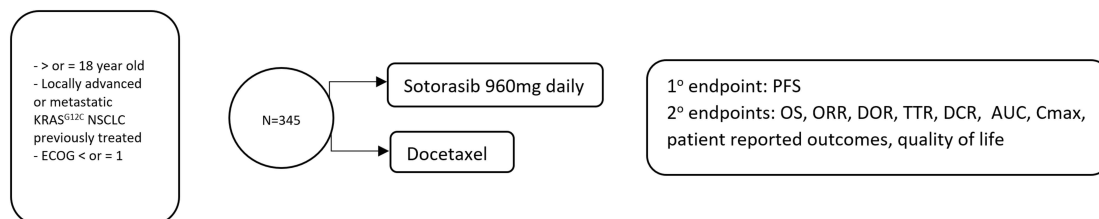
Adverse events occurred in 125 patients (99.2%). The most common were diarrhea in 64 patients (50.8%), nausea in 39 patients (31%), fatigue in 32 patients (25.4%), arthralgia in 27 patients (21.4%), elevated AST in 27 patients (21.4%), and elevated ALT in 26 patients (20.6%). Treatment-related adverse events occurred in 88 (69.8%) patients with one grade four event (0.8%) and 25 grade three events (19.8%). Based on these results, it is recommended to monitor liver function tests (LFTs) every three weeks, then monthly or as clinically indicated. Similarly to phase I results, phase II results demonstrated sotorasib to be potentially superior to standard second- and third-line therapies in *KRAS* NSCLC, with tolerable side effects at the 960mg dose.

## Phase 3 Registration Trial (Codebreak 200)

Currently, a confirmatory Phase III trial is undergoing investigation as CodeBreak 200 and will compare sotorasib to docetaxel in *KRAS*<sup>G12C</sup> patients who had already received chemotherapy or immunotherapy (Figure 2). We eagerly await the results.

## Mechanism of Resistance

Given preclinical and clinical trial results, sotorasib was given conditional approval by the FDA as the first *KRAS*<sup>G12C</sup> inhibitor in adults with *KRAS*<sup>G12C</sup> mutated NSCLC who had at least one prior systemic therapy. Unfortunately, the development of resistance to sotorasib has become increasingly common and can occur at both upstream sites (*EGFR*, *HER2*, *FGFR*) and downstream (*MAPK/MEK* pathway) sites. Resistance mechanisms may also occur by means of bypass mechanisms such as



Abbreviations: OR = overall response, PFS = progression free survival, DOR = duration of response, OS = overall survival, TTR = time to response, DCR = disease control rate, Cmax = maximum plasma concentration

**Figure 2** CodeBreak 200 Phase III registration trial schema.

*MET* amplifications, loss of function mutations in *NF1* and *PTEN*, and oncogenic fusions involving *ALK*, *RET*, *BRAF*, *RAF1*, and *FGFR3* (Table 3).<sup>18</sup> Although clinical attempts have been made to target these down-stream sites such as *MAPK*, therapeutic benefit has been limited, which may be due to alternate *RAS* dependent pathway activations.

Some notable resistance mutations include r68, H85, and Y96. The Y96D mutation, in particular, disrupts the hydrogen bond between Y96 and the carboxyl group of AMG 510, affecting the switch pocket. This has been illustrated by researchers, who have expressed *KRAS*<sup>G12C</sup> and *KRAS*<sup>G12C/Y96D</sup> double mutant proteins in cell lines. Cells that expressed *KRAS*<sup>G12C/Y96D</sup> were resistant to AMG 510 with an IC<sub>50</sub> of over 100 fold. Higher basal

activation and proportion of active GTP bound *KRAS* were present in cells expressing the Y96D mutations.<sup>19</sup>

One study exposed 142 Ba/F3 cells, transduced with *KRAS*<sup>G12C</sup> via retroviruses, to sotorasib or adagrasib, a similar novel *KRAS*<sup>G12C</sup> inhibitor and looked for secondary resistance mutations.<sup>20</sup> Twelve secondary mutations were identified in 124 clones. Y96D and Y96S mutations were found to be resistant to both inhibitors. The addition of BI-3406, a SOS1 inhibitor, plus trametinib was able to provide activity against these resistances. In this study, mutations G13D, R68M, A59S, and A59T were shown to be highly resistant to sotorasib. In order to overcome these resistance mutations, a combination therapy approach has been suggested.

**Table 3** Mechanisms of Resistance

On Target Resistance Mechanisms	Off Target Resistance Mechanisms
<b>Clinical findings</b>	
G12D	BRAF mutations
G12R	BRAF fusions
G12V	MEK
G12W	MAP2K1
G13D	NRAS
Q61H	ALK
R68S	RET
H95D	FGFR3
H95Q	RAF1
H95R	
Y96C	
<b>In vitro findings</b>	
Y96D	MEK
Y96S	
G13D	
R68M	
A59S	
A59T	

## Ongoing Studies and Future Directions

In newly diagnosed advanced metastatic NSCLC, it is critical to check for driver mutations such as *EGFR*, *ALK*, *ROS1*, *ERBB2*, *BRAF*, *RET*, and *MET*, as these driver mutations may serve as targets for therapies when positive.<sup>21</sup> With the approval of sotorasib, *KRAS*<sup>G12C</sup> has now joined the ranks as a targetable mutation and should continue to be examined in further studies. With the exciting conditional approval of sotorasib, many future directions remain to be explored including whether or not sotorasib can be used as an effective first-line therapy (monotherapy or in combination), postoperative adjuvant therapy, or neoadjuvant therapy.

As of now, there is an ongoing confirmational phase III study comparing sotorasib and docetaxel with pending results. The FDA is also mandating Amgen to evaluate sotorasib at the minimal 240mg daily. All doses ranging between 180mg and 960mg of sotorasib produced saturable absorption at similar levels in prior studies. This suggests that the dose of sotorasib is higher than what is needed to inhibit and phosphorylate ERK. At 240mg,

sotorasib should be dosed as twice daily to maintain a level above IC90 of ERK phosphorylation. A higher dose may have been chosen as no drug limiting toxicities were noted at 960mg daily, it is more conveniently dosed than twice daily, and a higher dose level may overcome errors in the in vitro studies.

As both phase I and phase II portions of the CodeBreak trial excluded those with active brain metastases, possibly because sotorasib did not penetrate the brain in rats, it would be interesting to explore the intracranial activity of sotorasib as a monotherapy or in combination therapy in this patient population.

Combination therapy may be one approach to overcome resistance mechanisms.<sup>22</sup> Combination may be superior to monotherapy by means of targeting other sites in the *KRAS* pathway. For example, the use of a SH2 containing protein tyrosine phosphatase-2 (SHP2) inhibitor, mammalian target of rapamycin (mTORC1) inhibitor, or checkpoint inhibitor along with sotorasib may overcome resistance mechanisms. SHP2 inhibitors increase *RAS* signaling, which may overcome resistance as GTPase activity is dependent on Son of Sevenless (SOS)1/2 activity downstream of *RAS*. This was demonstrated in vitro pancreatic ductal adenocarcinoma (PDAC) and NSCLC models by Fedele and colleagues.<sup>23</sup> In this study, the combinatory use of SHP2 inhibitor and G12C inhibitor synergistically extended survival with no toxic effects. Inhibition of other targets including *MET*, *SRC*, *GFGR*, and *PI3K* along with G12C also improved growth inhibition in mutant cell lines.<sup>24</sup> Based on the pre-clinical studies of sotorasib, which demonstrated that the immune system must be intact to obtain the benefits of sotorasib, combination therapy with immune checkpoint therapy such as PD-1 antibodies may also improve efficacy compared to monotherapy alone.

Based on these results, we may use what we learn for the development of other *KRAS* mutations such as G13C, which is less common although still accounts for 17% of *KRAS* mutation NSCLC patients and 56% in never smokers. On a grander scale, what we learn may guide us in perfecting therapies in *KRAS* positive colorectal cancers and other types of cancers beyond NSCLC.

## Disclosure

Dr Misako Nagasaka reports personal fees from AstraZeneca, Caris Life Sciences, Daiichi-Sankyo, Takeda, Novartis, EMD Serono, Blueprint Medicine and grants from Tempus, outside the submitted work. The authors report no other conflicts of interest in this work.

## References

- Cox AD, Der CJ. Ras history: the saga continues. *Small GTPases*. 2010;1(1):2–27.
- Riely GJ, Kris MG, Rosenbaum D, et al. Frequency and distinctive spectrum of *KRAS* mutations in never smokers with lung adenocarcinoma. *Clin Cancer Res*. 2008;14(18):5731–5734. doi:10.1158/1078-0432.CCR-08-0646
- Falk AT, Yazbeck N, Thon L, et al. Impact of *Kras* mutant subtypes on PD-L1 expression in lung adenocarcinoma. *Ann Oncol*. 2016;27(6):vi28. doi:10.1093/annonc/mdw363.40
- Wood K, Hensing T, Malik R, Salgia R. Prognostic and predictive value in *KRAS* in non-small-cell lung cancer a review. *JAMA Oncol*. 2016;2(6):805–812. doi:10.1001/jamaoncol.2016.0405
- Yu HA, Sima CS, Shen R, et al. Comparison of the characteristics and clinical course of 677 patients with metastatic lung cancers with mutations in *KRAS* codons 12 and 13. *J Clin Oncol*. 2013;31(15):8025. doi:10.1200/jco.2013.31.15\_suppl.8025
- Shepherd FA, Domerg C, Hainaut P, et al. Pooled analysis of the prognostic and predictive effects of *KRAS* mutation status and *KRAS* mutation subtype in early-stage resected non-small-cell lung cancer in four trials of adjuvant chemotherapy. *J Clin Oncol*. 2013;31(17):2173–2181. doi:10.1200/JCO.2012.48.1390
- Goulding RE, Chenoweth M, Carter GC, et al. *KRAS* mutation as a prognostic factor and predictive factor in advanced/metastatic non-small cell lung cancer: a systematic literature review and meta-analysis. *Cancer Treat Res Commun*. 2020;24:100200. doi:10.1016/j.ctarc.2020.100200
- Garon EB, Ciuleanu T, Arrieta O, et al. Ramucirumab plus docetaxel versus placebo plus docetaxel for second-line treatment of stage IV non-small-cell lung cancer after disease progression on platinum-based therapy (REVEL): a multicentre, double-blind, randomised phase 3 trial. *Lancet*. 2014;384(9944):665–673. doi:10.1016/S0140-6736(14)60845-X
- Skoulidis F, Goldberg ME, Greenawalt DM, et al. *STK11/LKB1* mutations and PD-1 inhibitor resistance in *KRAS*-mutant lung adenocarcinoma. *Cancer Discov*. 2018;8(7):822–835. doi:10.1158/2159-8290.CD-18-0099
- Romero R, Sayin VI, Davidson SM, et al. *Keap1* loss promotes *Kras*-driven lung cancer and results in dependence on glutaminolysis. *Nat Med*. 2017;23:1362–1368. doi:10.1038/nm.4407
- Lanman BA, Allen JR, Allen GJ, et al. Discovery of a covalent inhibitor of *KRAS*<sup>G12C</sup> (AMG 510) for the treatment of solid tumors. *J Med Chem*. 2020;63:52–65. doi:10.1021/acs.jmedchem.9b01180
- Center for Drug Evaluation and Research Application Number 214665Orig1s000. Drug approval package: Lumakras; 2020. Available from: [https://www.accessdata.fda.gov/drugsatfda\\_docs/nda/2021/214665Orig1s000TOC.cfm](https://www.accessdata.fda.gov/drugsatfda_docs/nda/2021/214665Orig1s000TOC.cfm). Accessed August 16, 2021.
- Canon J, Rex K, Saiki AY, et al. The clinical *KRAS*(G12C) inhibitor AMG 510 drives anti-tumor immunity. *Nature*. 2019;575:217–223. doi:10.1038/s41586-019-1694-1
- Werner JA, Davies R, Wahlstrom J, et al. Mercapturate pathway metabolites of sotorasib, a covalent inhibitor of *KRAS*<sup>G12C</sup>, are associated with renal toxicity in the Sprague Dawley rat. *Toxicol Appl Pharmacol*. 2021;423:115578. doi:10.1016/j.taap.2021.115578
- Hong DS, Fakih MG, Strickler JH, et al. *KRAS*<sup>G12C</sup> inhibition with sotorasib in advanced solid tumors. *NEJM*. 2020;383(13):1207–1217. doi:10.1056/NEJMoa1917239
- Hayashi H, Okamoto I, Taguri M, Morita S, Nakagawa K. Postprogression survival in patients with advanced non-small-cell lung cancer who receive second-line or third-line chemotherapy. *Clin Lung Cancer*. 2013;14(3):261–266. doi:10.1016/j.clcc.2012.09.006
- Skoulidis F, Li BT, Dy GK, et al. Sotorasib for lung cancers with *KRAS* p.G12C mutation. *NEJM*. 2021;384:2371–2381. doi:10.1056/NEJMoa2103695



18. Awad MM, Liu S, Rybkin II, et al. Acquired resistance to KRAS<sup>G12C</sup> inhibition in cancer. *NEJM*. 2021;384:2382–2393. doi:10.1056/NEJMoa2105281
19. Tanaka N, Lin JJ, Li C, et al. Clinical acquired resistance to KRAS<sup>G12C</sup> inhibition through a novel KRAS switch-II pocket mutation and polyclonal alterations converging on RAS-MAPK reactivation. *Res Briefs*. 2021. doi:10.1158/2159-8290.CD-21-0365
20. Koga T, Suda K, Fujino T, et al. KRAS secondary mutations that confer acquired resistance to KRAS G12C inhibitors, sotorasib and adagrasib, and overcoming strategies: insights from in vitro experiments. *J Thorac Oncol*. 2021;16(8):1321–1332. doi:10.1016/j.jtho.2021.04.015
21. Chu QS. Targeting non-small cell lung cancer: driver mutation beyond epidermal growth factor mutation and anaplastic lymphoma kinase fusion. *Ther Adv Med Oncol*. 2020;12:175883591989575. doi:10.1177/1758835919895756
22. Dunnett-Kane V, Nicola P, Blackhall F, Lindsay C. Mechanisms of resistance to KRAS<sup>G12C</sup> inhibitors. *Cancers*. 2021;13(1):151. doi:10.3390/cancers13010151
23. Fedele C, Li S, Teng KW, et al. SHP2 inhibition diminishes KRASG12C cycling and promotes tumor microenvironment remodeling. *J Exp Med*. 2021;218(1). doi:10.1084/jem.20201414
24. Misale S, Fatherree JP, Cortez E, et al. KRAS G12C NSCLC models are sensitive to direct targeting of KRAS in combination with PI3K inhibition. *Clin Cancer Res*. 2019;25(2):796–807. doi:10.1158/1078-0432.CCR-18-0368

## Lung Cancer: Targets and Therapy

Dovepress

### Publish your work in this journal

Lung Cancer: Targets and Therapy is an international, peer-reviewed, open access journal focusing on lung cancer research, identification of therapeutic targets and the optimal use of preventative and integrated treatment interventions to achieve improved outcomes, enhanced survival and quality of life for the cancer patient. Specific topics covered in the journal include: Epidemiology,

detection and screening; Cellular research and biomarkers; Identification of biotargets and agents with novel mechanisms of action; Optimal clinical use of existing anticancer agents, including combination therapies; Radiation and surgery; Palliative care; Patient adherence, quality of life, satisfaction; Health economic evaluations.

Submit your manuscript here: <http://www.dovepress.com/lung-cancer-targets-therapy-journal>