

UC Irvine

UC Irvine Previously Published Works

Title

On the Mechanics of Transcatheter Aortic Valve Replacement.

Permalink

<https://escholarship.org/uc/item/2zp9n640>

Journal

Annals of biomedical engineering, 45(2)

ISSN

0090-6964

Authors

Dasi, Lakshmi P
Hatoum, Hoda
Kheradvar, Arash
[et al.](#)

Publication Date

2017-02-01

DOI

10.1007/s10439-016-1759-3

Peer reviewed

The Pursuit of Engineering the Ideal Heart Valve Replacement or Repair

On the Mechanics of Transcatheter Aortic Valve Replacement

LAKSHMI P. DAS¹, HODA HATOUM¹, ARASH KHERADVAR², RAMIN ZAREIAN², S. HAMED ALAVI², WEI SUN³,
CAITLIN MARTIN³, THUY PHAM³, QIAN WANG³, PREM A. MIDHA³, VRISHANK RAGHAV³,
and AJIT P. YOGANATHAN³

¹Department of Biomedical Engineering, Dorothy Davis Heart and Lung Research Institute, The Ohio State University, 473 W 12th Avenue, Columbus, OH 43210, USA; ²The Edwards Lifesciences Center for Advanced Cardiovascular Technology, Department of Biomedical Engineering, University of California, Irvine, CA 92697, USA; and ³Wallace H. Coulter Department of Biomedical Engineering, Georgia Institute of Technology, Atlanta, GA 30332, USA

(Received 20 July 2016; accepted 3 November 2016)

Associate Editor Jane Grande-Allen oversaw the review of this article.

Abstract—Transcatheter aortic valves (TAVs) represent the latest advances in prosthetic heart valve technology. TAVs are truly transformational as they bring the benefit of heart valve replacement to patients that would otherwise not be operated on. Nevertheless, like any new device technology, the high expectations are dampened with growing concerns arising from frequent complications that develop in patients, indicating that the technology is far from being mature. Some of the most common complications that plague current TAV devices include malpositioning, crimp-induced leaflet damage, paravalvular leak, thrombosis, conduction abnormalities and prosthesis-patient mismatch. In this article, we provide an in-depth review of the current state-of-the-art pertaining the mechanics of TAVs while highlighting various studies guiding clinicians, regulatory agencies, and next-generation device designers.

Keywords—TAVR, Transcatheter aortic valve, Stent, Minimally invasive, Thrombosis, Paravalvular leak, Valve-in-valve.

INTRODUCTION

Transcatheter aortic valve replacement (TAVR) is an exciting new approach to treat aortic valve stenosis in patients who are classified as high-risk for open heart surgical aortic valve replacement (SAVR). A transcatheter aortic valve (TAV) is designed to be compressed into a small diameter catheter, remotely placed within a patient's diseased aortic valve under

fluoroscopic guidance to take over the function of the native valve. Some TAVs (e.g., Edwards SAPIEN family) are balloon-expandable, while others (e.g., Medtronic's CoreValve) are self-expandable owing to their shape-memory nitinol stents. In both cases, the TAVs are deployed within a calcified native valve that is forced permanently open and becomes the surface against which the stent is held in place by friction. More recently, TAVs have been used to replace failing bioprosthetic or transcatheter valves that were previously implanted in a procedure known as valve-in-valve (ViV). Figure 1 shows the TAVs that are currently approved by the Food and Drug Administration (FDA) for clinical use in the United States.⁵⁸ The design features, which most distinguish TAVs from their surgical counterparts—except for suture-less SAVRs—are the lack of a sewing cuff and the presence of a collapsible stent frame that houses the valve leaflets.

Due to its minimally invasive approach, TAVR has a strong appeal to becoming the standard of care for low-risk patients. However, like any new device technology, the high expectations are dampened with growing concerns arising from frequent complications that develop in patients, indicating that the technology is far from being mature. Some of the most common complications that plague current TAVR devices include malpositioning, crimp-induced leaflet damage, paravalvular leak, thrombosis, conduction abnormalities and prosthesis-patient mismatch (PPM). These complications are currently difficult to predict prior to the procedure; however, patient-specific risk factors are thought to include the calcification landscape of the native valve, geometric and mechanical properties of

Address correspondence to Lakshmi P. Dasi, Department of Biomedical Engineering, Dorothy Davis Heart and Lung Research Institute, The Ohio State University, 473 W 12th Avenue, Columbus, OH 43210, USA. Electronic mail: dasi.l@osu.edu

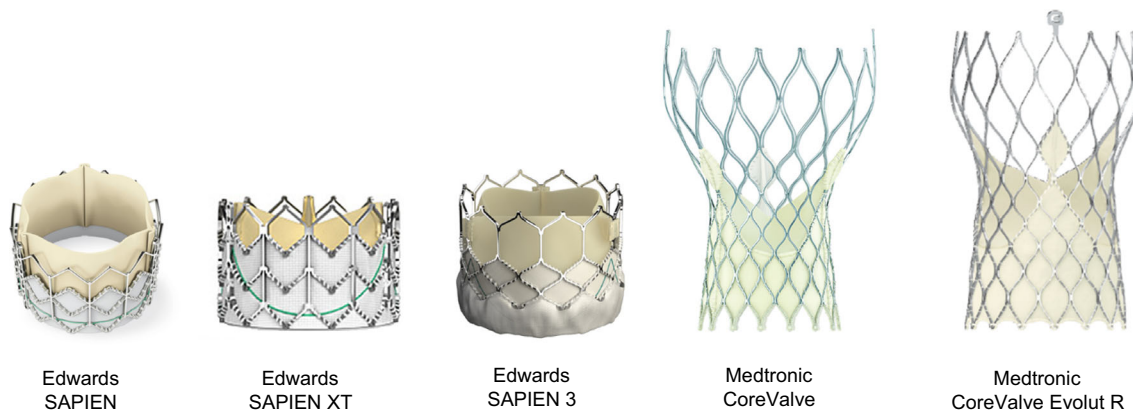


FIGURE 1. Transcatheter aortic valves FDA-approved for clinical use in the US. The figure is from Kheradvar *et al.*,⁵⁸ with permission.

the aortic root, blood biochemistry and coagulability, and concomitant conditions such as hypertension, coronary artery disease, heart failure, *etc.* To ensure the robustness and safety of current and future TAVR devices, it is crucial to understand the relationship between potential complications, and their underlying mechanics. This work provides an in-depth review of the current state-of-the-art pertaining to TAVR mechanics and highlights various engineering studies guiding clinicians, regulatory agencies, and next-generation device designers. In what follows, we have divided the article into three main parts focusing on the fluid mechanics, solid mechanics, and future design concepts, respectively.

FLUID MECHANICS OF TAVR

Due to their particular design features, TAVs can undergo fluid and structural failure modes. The following sections provide a review of the major fluid mechanics-related failure modes, including paravalvular leak, PPM (particularly in ViV applications), thrombosis, and non-circular deployment.

Paravalvular Leak (PVL)

Valvular regurgitation is more prevalent after TAVR than SAVR.^{72,86,95,105} In general, valvular leakage can be central or commissural (between the leaflets), paravalvular (between the prosthesis and deployment zone), or supra-skirtal (a form of PVL). Clinical studies have shown that even mild regurgitation can be associated with increased post-TAVR mortality.^{64,128,146} Figure 2 illustrates each mode of valvular leakage in the Edwards's SAPIEN and the Medtronic's CoreValve. Central or commissural regurgitation occurs in diseased, damaged, or

improperly-deployed TAV when the leaflets do not fully coapt, while some prostheses have minor central leakage by design.⁷² If a TAV is implanted too low within the annulus, supra-skirtal leakage can occur through the uncovered region of the stent. This has been observed in both SAPIEN and CoreValve, as only the lower part of their stents are shielded by a skirt.¹²¹ However, PVL is more frequent, affecting as many as 50% of patients with at least mild regurgitation.^{64,72} PVL can lead to congestive heart failure, hemolysis,^{103,118} forceful contractions of the heart, and arrhythmias.⁵⁰ Risk factors for PVL include heterogeneous calcification of the native annulus,^{24,37,72,115,139} malposition of the prosthesis^{24,93} and TAV undersizing.^{22,24,37,39,72} Figure 3 shows PVL at both coronary and non-coronary cusps in presence of different calcific lesions. Di Martino *et al.* suggested that self-expandable prosthesis may undergo resistance from the calcified native valve during deployment that may lead to a higher incidence of paravalvular leak.²⁴ Accordingly, Abdel-Wahab *et al.* found that the occurrence of PVL was higher with CoreValve than SAPIEN.^{3,51}

Anatomical and procedural factors have also been correlated with occurrence of PVL. A large aortic annulus as measured by CT may increase the chance of PVL.^{52,98} Detaint *et al.*²² defined a cover index representing the ratio of the difference between the TAV and annulus diameters. This index is a measure of TAV oversizing.⁴⁷ A low cover index is associated with greater PVL.

The impact of PVL on patient mortality has motivated design changes to improve sealing.¹¹⁶ Design features, such as inflow skirts or cuffs as in Edwards' SAPIEN 3, Boston Scientific's Lotus, FoldaValve's⁵⁹ and St. Jude Medical's Portico or alternative frame materials as used by Direct Flow are some examples that are being explored and utilized with some success.¹⁴¹

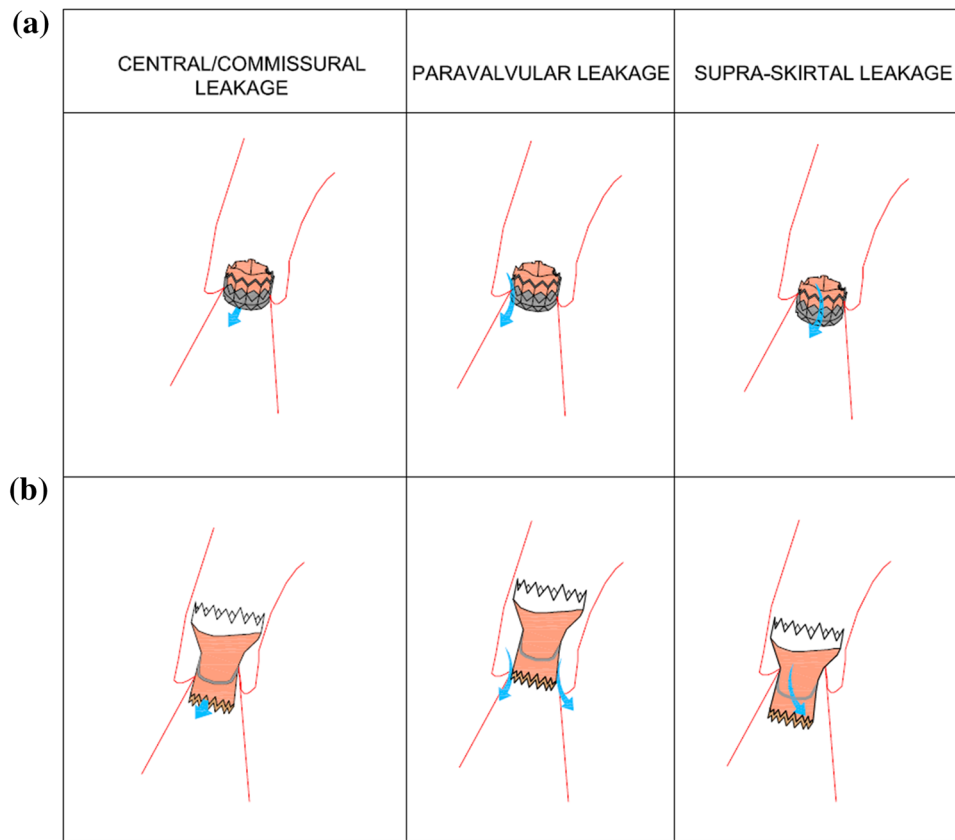


FIGURE 2. Types of valvular leakages in (a) Edwards SAPIEN valve and (b) CoreValve.

TAVR Thrombosis

Thrombosis is the formation of blood clots or thrombi that can lead to partial or complete restriction of heart valve leaflet motion and/or embolization. Thrombosis in the cardiovascular system is traditionally discussed in terms of Virchow's triad (fluid flow, foreign materials, and blood biochemistry). Presence of non-hemocompatible material in a blood circulation may lead to platelet activation.⁸ Sensitized platelets exposed to extended periods of flow stagnation and/or recirculation can result in thrombus formation.^{27,60,148} For example, stagnant flow in the sinus may expose these sensitized platelets to extended exposure time, making this site prone to thrombus formation.^{43,111} Furthermore, it was shown that flow stagnation in the sinus was exacerbated with supra-annular implantation of the TAV.^{42,66,83} Particle tracking results illustrated in Fig. 4, show that there is a significant increase in the time taken for a given number of particles to exit the sinus at the highest supra-annular deployment.^{83,85} These studies also demonstrate that the flow stagnation primarily occurs at the base of the sinus.^{42,66,83} After TAVR, the risk of thrombus formation rises in some patients.⁶⁷ Factors that are thought to trigger post-TAVR thrombus formation are summarized as

follows: small or under-expanded valves, premature stopping of antithrombotic or antiplatelet therapy, aggressive post-dilation, crimp-induced leaflet damage and geometric deformation of the valve stent.^{67,90} Recently Makkar *et al.*⁷⁶ revealed evidence of reduced leaflet mobility to happen more frequently in transcatheter aortic valves compared to surgically-implanted bioprosthetic valve, which may explain consequent embolic stroke in patients undergoing TAVR. They also observed that warfarin improves leaflet mobility that supports their hypothesis indicating the reduced leaflet mobility is due to subclinical leaflet thrombosis. While the authors acknowledge the small sample size, p values of 0.08 and 0.18 for Percutaneous Coronary Intervention (PCI) and Coronary Artery Bypass Graft (CABG), respectively, may indicate that diminished coronary perfusion could be a factor in thrombus formation. In a correspondence to Makkar's publication, Hatoum *et al.* proposed a potential relationship between reduction in flow and formation of thrombus.⁴⁸ Figure 5 shows some clinical images taken from Makkar *et al.* illustrating the reduced leaflet motion relative to the coronary ostia.^{48,76} As can be seen in the figure, non-coronary sinuses as well as non-anatomical positioning of the TAV may explain possible flow stasis that correlates with the thrombus locations.

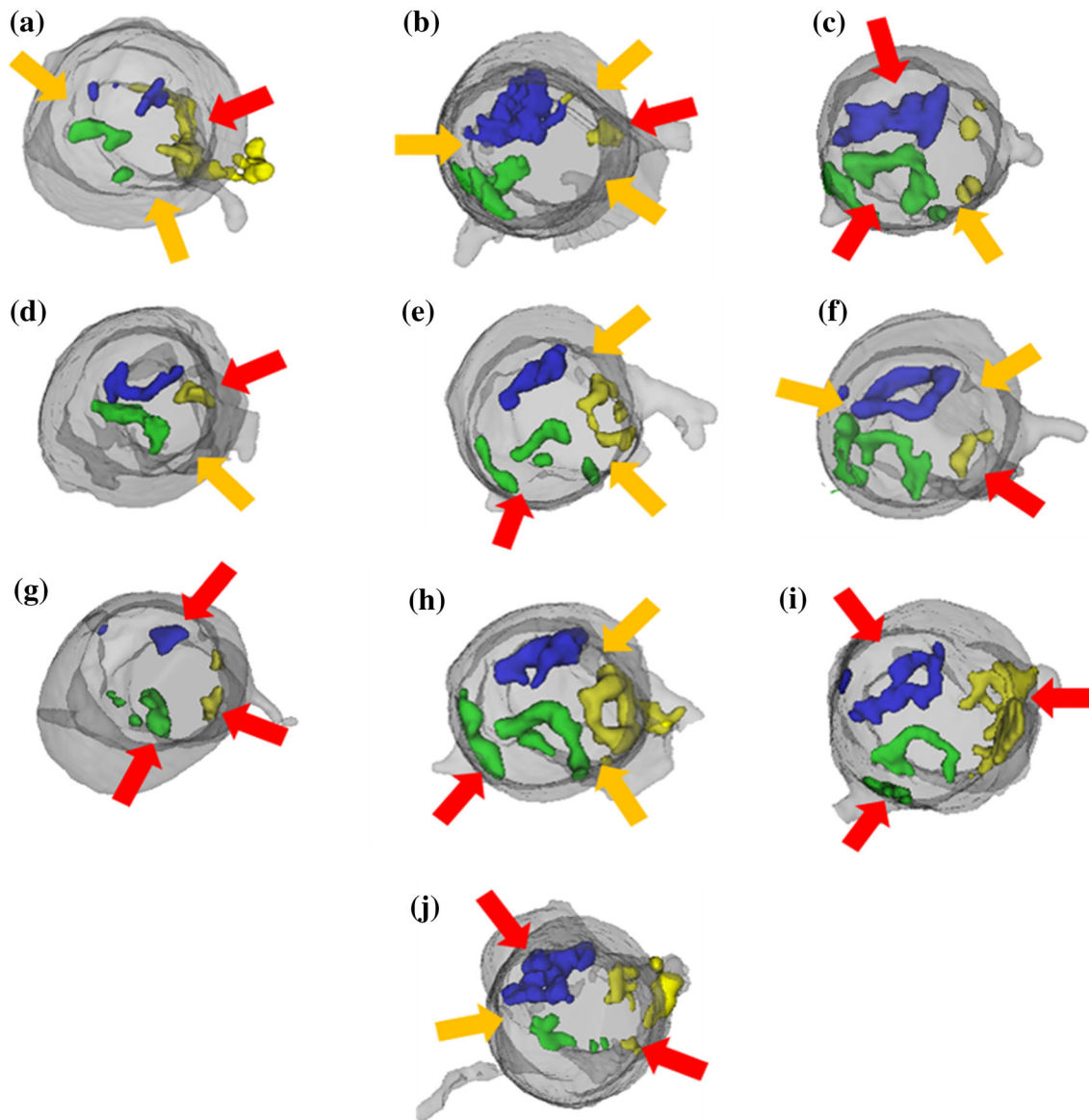


FIGURE 3. Segmented Computed Tomography (CT) scans presenting reconstructed 3D models of the aortic root and calcific lesions overlaid with positions of paravalvular leak after TAVR based on respective transesophageal echocardiography scans. The figure is from Zebhi *et al.* with permission.¹⁵⁰ Red arrows correspond to PVL at cusp side and orange arrows correspond to PVL at commissure between two cusps. Green, blue and yellow denote the calcification in the right coronary, non-coronary and left coronary cusps respectively.

Non-circular TAV Deployment

As mentioned earlier, the interaction between the TAV and native aortic valve is not predictable. Sometimes, the stented-valve assumes an eccentric shape due to deployment in irregularly calcified native leaflets. For example, circular deployment is achieved only in 86% of the patients undergoing TAVR with a balloon-expandable prosthesis e.g., Edwards SAPIEN.^{21,47} Likewise, a non-circular deployment in such cases is associated with further calcification and paravalvular regurgitation.^{21,38,149} Schultz *et al.*¹⁰⁸ reported that this problem is also prevalent in self-expandable valves such as the Medtronic's CoreValve,

where a majority of valves implanted in patients achieved a non-circular conformation. Abbasi *et al.*² investigated the synergistic impact of eccentric and incomplete stent deployment and showed that it may lead to higher localized stress regions over TAV leaflets *in vitro*. In addition, high mechanical stresses over TAV leaflets may induce enhanced tissue degeneration and reduce long-term valve durability.^{2,4,28,126} On the contrary, some studies show that the relationship between non-circular deployment and paravalvular leak is not conclusive.^{70,147} In a case-report, Jilaihawi *et al.*⁵³ noted that TAV under-expansion can lead to good hemodynamic function and excellent symp-

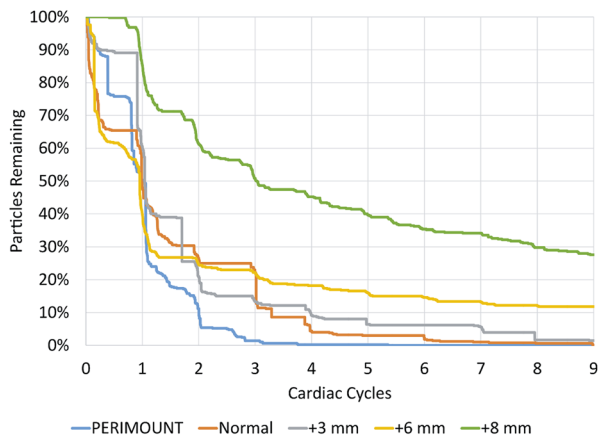


FIGURE 4. Sinus washout curves for various supra-annular ViV (SAPIEN in PERIMOUNT) deployments. The figure is from Midha *et al.*⁸⁵ with permission.

omatic recovery. Bench-top experiments conducted by Gunning *et al.*⁴³ using particle image velocimetry downstream of an eccentrically-deployed TAV suggested that the hemodynamic performance is invariable to the TAV configuration. They also noted that the eccentric TAV deployment may result in an asymmetric systolic jet with elevated turbulence and shear stress downstream of the valve; however, this phenomenon may not be significant enough to induce blood damage.⁴³ While TAV oversizing can be used as a solution to compensate for eccentric TAV deployment, many studies have shown that oversizing contributes to annular injury or even rupture.^{70,77} Oversizing by specific percentages optimizes risk/benefit ratio in terms of paravalvular leakage and conduction disorders.^{47,68,75} Sun *et al.*¹²⁶ demon-

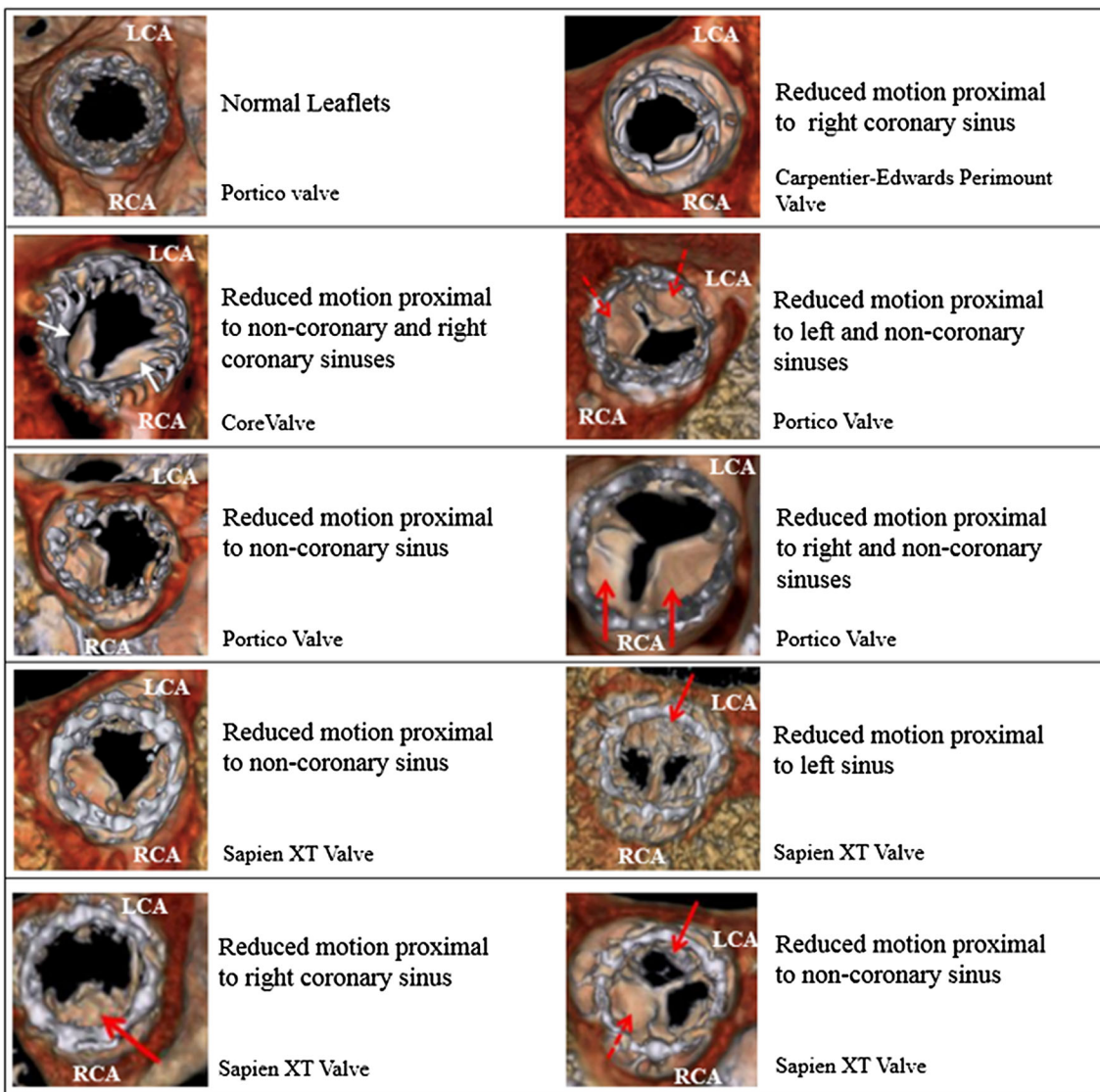


FIGURE 5. Reduced motion leaflet identification images of different prosthetic and surgical valves presented in Makkar *et al.*⁷⁶ with respect to their corresponding sinuses. The figure is from Makkar *et al.*⁷⁶ with permission. LCA, left coronary artery and RCA, right coronary artery.

strated that when the eccentricity value is above 0.5, the TAV may not properly close and is likely to result in increased commissural backflow leakage.^{108,126}

Fluid Mechanics of Prosthesis-Patient Mismatch (PPM)

Rahimtoola *et al.*^{19,97} defined prosthesis-patient mismatch as an effective orifice area (EOA) smaller than that of a normal human valve. Successively Dumesnil and Pibarot explained that this definition can be applied to almost all valve replacements.²⁸ Therefore, the heart must overcome the additional flow resistance *via* elevated pressures.¹⁰ Gorlin and Hakki⁴⁶ describe that transvalvular gradients depend on both EOA and transvalvular flow rate. While the cutoffs for PPM have been debated, PPM occurs when the prosthesis' EOA normalized by body surface area is less than $0.85 \text{ cm}^2/\text{m}^2$.²⁸

Valve-in-Valve (ViV) implantation is a procedure in which a TAV is deployed within a failing bioprosthetic or transcatheter valve.⁸⁰ Due to the typically high-risk or inoperable classification of these patients, ViV provides a viable valve replacement option when a second surgical procedure is not an option.^{33,142,144} With this procedure being the patient's second valve replacement, there is always a high probability of coronary obstruction, PPM and residual stenosis.^{34,140} Other *in vitro* studies have also suggested similar consequences such as the study by Azadani *et al.*¹³ conducted to test the hemodynamics of TAVs in degenerated—and particularly small-sized—bioprostheses. Careful selection of the TAV for ViV needs to be considered to mitigate the risk of paravalvular leakage as well as residual stenosis.^{12,13} When Edwards' SAPIEN and Medtronic's CoreValve were implanted in surgical valves with internal diameters less than 20 mm, elevated post-procedural gradients ($>20 \text{ mmHg}$) were found in 59 and 20% of patients, respectively.^{32,134,140} This is thought to be due to the intra-annular nature of the SAPIEN family of valves, whereas CoreValves are supra-annular by design.²⁹ A recent *in vitro* study by Simonato *et al.*¹¹² has emphasized the likelihood of having low pressure gradients associated with the supra-annular TAV implantation in particularly-small bioprostheses. The type of the bioprosthesis used also plays a role in the function and hemodynamic assessment of the ViV setup. The differences are elaborated in a study by Sedaghat *et al.*,¹⁰⁹ as the paravalvular leakage was found higher when an Edwards' SAPIEN was implanted within a 23 mm Edwards' Perimount compared to that seen when a Medtronic's CoreValve was implanted in the same valve. Surprisingly, conflicting results were observed when the same TAVs were im-

planted within a St. Jude Medical's Trifecta. The design of the Trifecta valve with leaflets sutured on the outside of the stent rather than on the inside may be a reason for this difference.

Other studies have shown that optimal size and placement of TAVs may exist outside the current guidelines.^{29,83,84} One possible solution to improve post-procedural gradients and minimize PPM is to implant the TAV in a supra-annular position (Fig. 6a), effectively bypassing the geometric constraints imposed by the semi-rigid bioprostheses.^{83,112,153} However, several risks are associated with supra-annular deployment, including device migration or embolization (Fig. 6b), coronary obstruction^{31,124} as described by Dvir *et al.*³¹ tested *in vitro* by Stock *et al.*,¹²⁴ and thrombus formation due to flow stagnation within the sinus region (Fig. 6c). An *in vitro* risk-benefit analysis of supra-annular deployment of a SAPIEN XT in a small surgical bioprosthetic valve demonstrated that the optimal deployment is in the range of 3 to 6 mm supra-annular. Another *in vitro* study by Groves *et al.* has shown that placement of a TAV within the annulus of a bioprosthetic valve with no more than 5 mm distance from its annulus should be ideal.⁴² Any further displacement of the valve can be associated with detrimental effects on the observed hemodynamics. Groves *et al.* suggested that the transcatheter valve placement as close to the bioprosthetic valve annulus as possible provides optimal hemodynamics in the sinuses of Valsalva and ascending aorta.⁴²

Considering all the above-mentioned *in vitro* studies, we emphasize that clinicians must first consider patient-specific anatomic characteristics and carefully weigh the benefit of intra- or supra-annular valve implantation in reducing post-procedural gradients against the potential risk for valve thrombosis, conduction abnormality and device migration.

Figure 7 shows a schematic of a typical ViV arrangement in which a transcatheter valve is deployed within a stented surgical bioprosthetic valve. The relative dimensions described in the figure vary among valve types. For instance, a 23 mm Edwards' PERIMOUNT and a 23 mm Medtronic Mosaic are indicated for an annulus approximately 23 mm in diameter, however, the internal diameters are 21 and 18.5 mm, respectively. A 23 mm Edwards' SAPIEN XT could expand 2.5 mm further within the PERIMOUNT rather than the Mosaic, thus leading to less PPM and lower gradients. As shown in the figure, most of the area is occupied by the original surgical valve. Bapat *et al.*¹⁶ helped creating a standardized ViV sizing and positioning guidelines by deploying various sizes of TAVs in a wide range of surgical bioprostheses. A summary based on that study is shown in Table 1 exhibiting different sizes of a stented surgical aortic

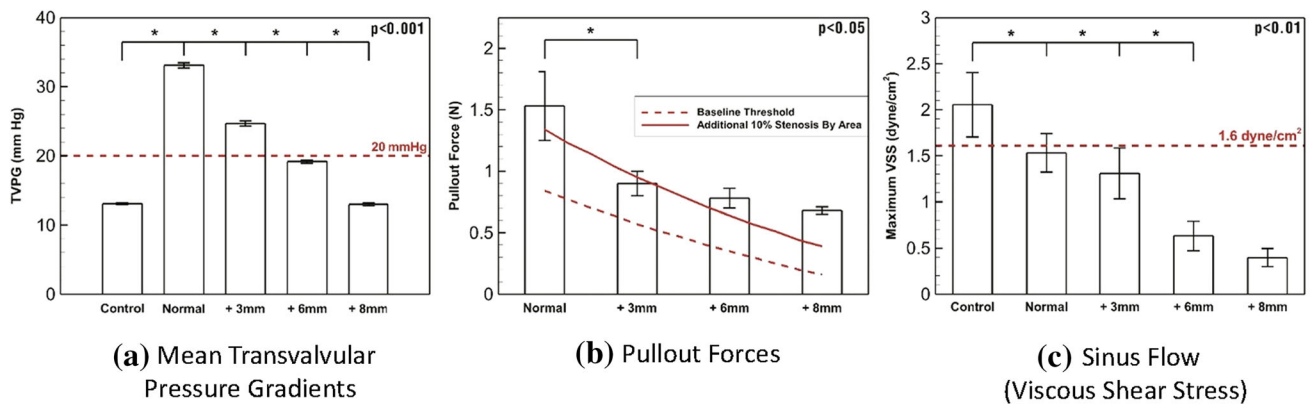


FIGURE 6. Hemodynamic performance and associated risks at various ViV deployment positions (SAPIEN in PERIMOUNT). The figure is from Midha *et al.*⁸³ with permission.

valve and their corresponding valve-in-valve matches for the Edwards' SAPIEN XT, Medtronic's CoreValve, and St. Jude Medical's Portico. With ViV sizing guidelines in place, knowing a patient's surgical valve type and size allows for appropriate TAVs to be selected for the purpose of ViV.

Figure 8 shows the evolution of the aortic valve area as the condition and configurations of a diseased aortic valve changes. The figure compares the improvement level in aortic valve area after the implantation of a TAV and a surgical bioprosthesis. The Figure considers 3.5 cm^2 as the healthy aortic valve area and the ratio of 1.0 represents a healthy case. Gavina *et al.* show that TAVs may lead to lower gradients than surgical valves in native aortic valve replacement.^{36,131} The Figure also shows the level of reduction in valve area after ViV,⁷⁴ along with a comparison valve area in ViV configurations when the diseased bioprosthesis is a surgical valve versus a TAV.¹⁰⁰ Due to the lack of published data regarding valve-in-valve-in-valve procedures, the value adopted in this figure is only a projection based on a fractional reduction seen in the ViV configuration results. In this case, a second ViV deployment may drop below the 1 cm^2 cutoff for severe aortic stenosis.^{55,94}

STRUCTURAL MECHANICS OF TAVR

Many catastrophic TAV failures observed in clinics can be explained from a biomechanics perspective. For instance, excessive radial expansion force exerted by the TAV stent may lead to aortic annulus injury, while insufficient force may result in PVL and device migration. In addition, improper TAV positioning can cause coronary ostia's occlusion. Thus, a quantitative understanding of the biomechanical interactions between the native aortic tissue and TAV is essential for scientifically-justified design of the next-generation

devices and an enabling step towards patient-specific device selection and procedural planning. More recently, several studies on structural analyses were performed using finite element models to understand the interaction between TAV and aortic root interaction. These studies are mainly classified into two groups: (1) simulation of biomechanical interactions between the TAV devices and the aortic root, and (2) post-TAVR evaluation of the device performance. The accuracy of these models largely depends on three critical factors: geometry, material properties, and boundary conditions. The processes to determine these factors are reviewed in the subsequent section.

Modeling the Interactions Between TAV and Aortic Root

A deployed TAV device comes into contact with the aortic root, leaflets and left ventricle besides any potential calcification spots. Thus modelling these anatomical structures are critical to develop accurate computational models for TAVR. The aortic root, including the aortic sinuses and the ascending aorta, as well as the calcification can be segmented directly using commercial image-processing software such as Avizo (VSG, Burlington, MA) and Mimics (Materialise Inc., Belgium) by selecting an appropriate window width of Hounsfield units (HU).^{18,136} For example, Wang *et al.*¹³⁶ chose a window width of 950 and -50 HU for the segmentation of the aortic root. However, the valve leaflets typically cannot be directly segmented from the images using the software, and have been ignored in many studies.^{11,44} The segmentation of the native leaflets requires manual digitization and reconstruction process,^{117,136–138} which can be cumbersome and prone to error.

The aortic root and native leaflets are often modeled using shell elements.^{18,44,87,104,117} However, transverse

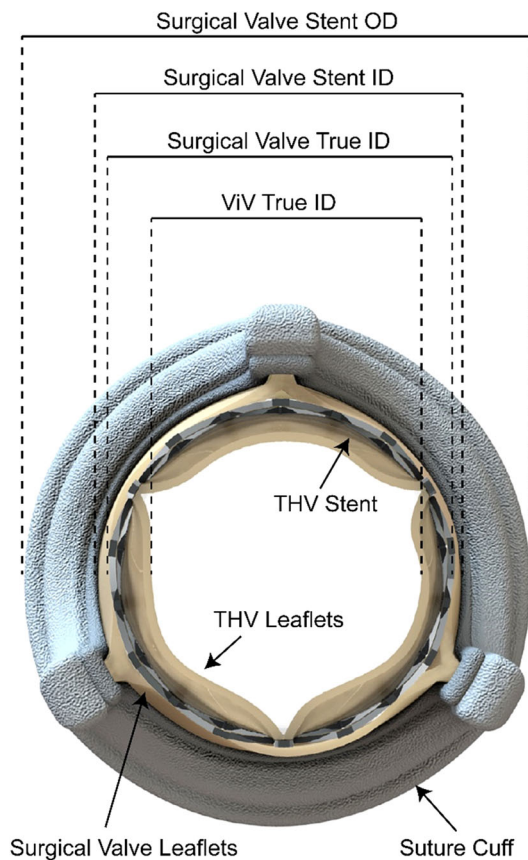


FIGURE 7. *En face* rendering of a SAPIEN valve deployed within a stented surgical bioprosthesis. Note the reduction in geometric orifice area with each additional prosthesis.

shear stiffness may not be accurate in shell elements, and thus may give inaccurate results when modeling out-of-plane bending responses. Furthermore, the addition of calcification to the aortic root and leaflets requires precise accounting of volume and geometry, for which a 3D element is required. Calcification may result in highly complex geometries and can be embedded into the leaflets and sinuses, which was not included in many of the earlier computational models.^{11,15,18,44,87} Recent studies indicate that it is advantageous to model both aortic root and calcification using brick elements.^{17,41,136–138} Only a few studies include the left ventricle (LV) in modeling TAVR;^{104,136–138} however, Wang *et al.*¹³⁸ reported that by including some portion of the LV, the tissue-TAV interaction force increases upon stent deployment; thus inclusion of the LV may improve the accuracy of the analysis.

Various material models have been used to describe aortic tissue behavior, including rigid walls,¹⁰⁴ linear elastic models,^{15,41,104} isotropic hyperelastic models,^{17,18,44,56,87,104} and anisotropic hyperelastic models.^{11,87,136–138} A more advanced material model can

capture the tissue response more accurately, providing more accurate simulation results at the expense of computational time.

Patient-specific computational models for TAVR can potentially be utilized as a tool to refine patient selection, evaluate device performance, and eventually improve clinical outcomes for each patient. Many Finite Element (FE) models^{11,15,17,18,41,44,87,104,136–138} have been developed over the past several years to analyze the biomechanics involved with TAVR in specific patient groups. These models have been used to evaluate the potential for coronary artery occlusion^{18,136–138} and migration,¹⁷ as well as the feasibility of complex clinical cases such as ViV.¹⁸ Notably, Wang *et al.*¹³⁶ have described a complex patient-specific TAVR model that includes realistic aged human tissue properties including the aortic root failure criteria defined by experiments,⁷⁸ as well as a fluid cavity modeling approach to simulate the balloon expansion of the Edwards' SAPIEN stent (Fig. 9). They simulated TAVR in three patients considered to be at a higher risk of aortic root rupture, and showed that asymmetric calcium deposition within the root may be a cause of TAVR-induced aortic rupture clinically observed. Collectively these studies have shown that the size and location of calcium deposits are critical to the success of TAVR procedure.^{104,136–138} Calcification can prevent full or symmetric stent expansion leading to paravalvular leakage^{17,87,136–138} and distortion of the TAV leaflet configuration.^{11,44,87}

Modeling of Post-operative Device Performance

Li and Sun⁷³ presented the first FE model for TAV leaflet deformations. The leaflet material behavior was defined by the non-linear, anisotropic, hyper-elastic Fung-type model fitted to planar biaxial testing data of thin glutaraldehyde-treated bovine pericardium and porcine pericardium. Li and Sun⁷³ showed that leaflet stresses decrease with increasing tissue thickness, and under the same loading and boundary conditions, bovine pericardium leaflets have a lower peak stress compared to porcine pericardium leaflets (59%). All the cases of the TAV leaflet stresses and strains⁷³ were significantly higher compared to those reported by Sun *et al.*¹²⁵ for traditional surgical bioprosthetic valve leaflets. These results suggest that TAVs will have a limited long-term durability compared to surgical bioprosthetic valves, particularly the TAVs utilizing porcine pericardium leaflets.

In a follow-up study using this same FE model,⁷³ Sun *et al.*¹²⁶ showed that the elliptical deployment compromises TAV leaflet coaptation and increases leaflet stresses. A stent elliptical eccentricity of 0.68 resulted in a 143% increase in the leaflet peak stress

TABLE 1. Corresponding valve-in-valve matches for different sizes of stented bioprosthetic surgical aortic valves

Bioprosthetic stented valve true ID (mm)	Appropriate TAV type for ViV	Corresponding TAV annulus size (mm)
16–17.5	Sapien 20	16–18
18–18.5	Sapien 20	16–18
	CoreValve 23	18–20
	Portico 23	19–21
19	Sapien 23	18–22
	CoreValve 23	18–20
	Portico 23	19–21
20.5–21	Sapien 23	18–22
	CoreValve 23	18–20
	Portico 23	19–21
22	Sapien 26	22–25
	CoreValve 26	20–23
	Portico 25	21–23
23	Sapien 26	22–25
	CoreValve 26	20–23
	Portico 25	21–23
24	Sapien 26	22–25
	CoreValve 26	20–23
	Portico 27	23–25
25–26	Sapien 29	25–27.7
	CoreValve 29	23–27
	Portico 27	23–25
27	Sapien 29	25–27.7
	CoreValve 29	23–27
	Portico 29	25–27

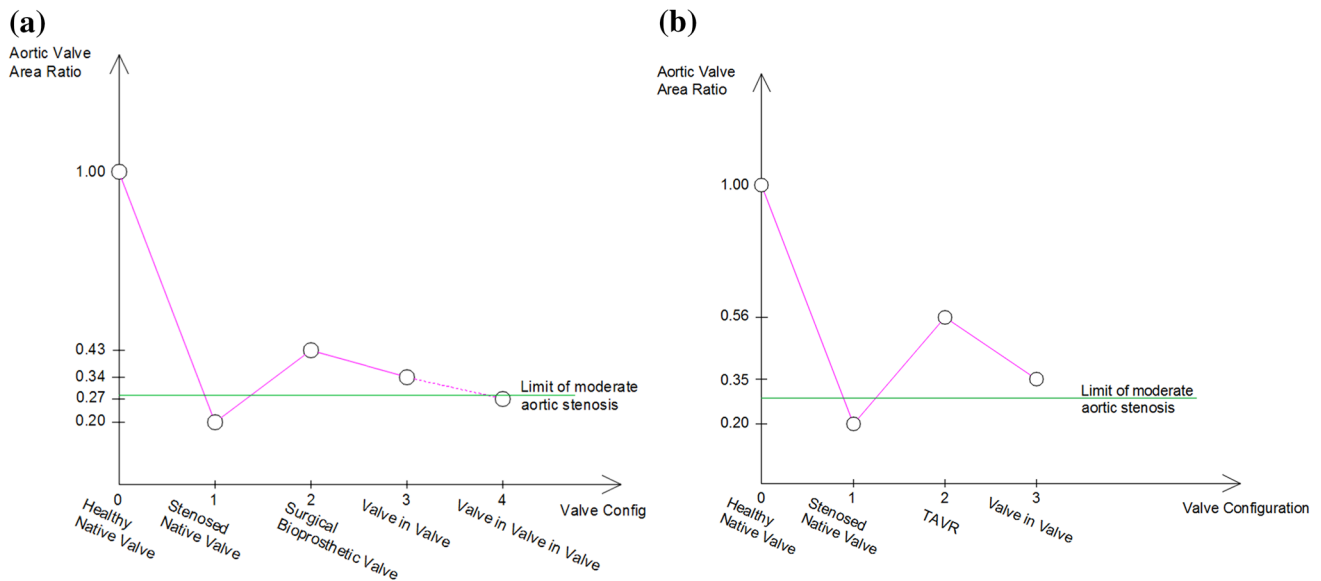


FIGURE 8. Evolution of the aortic valve area as the configuration of the valves change in the case of (a) a surgical heart valve implantation originally and (b) a transcatheter aortic heart valve implantation originally. The value of 1.00 corresponds to a healthy aortic valve area that is taken to be 3.5 cm².

compared to the nominal circular configuration. Furthermore, it was shown that an eccentricity exceeding 0.5 can lead to central aortic regurgitation. Incomplete stent expansion has also been shown to distort the

configuration of the leaflets.^{119,152} Abbasi and Azadani¹ studied the impact of incomplete stent expansion on the TAV leaflet deformation in a 23 mm valve using FE model. They found that reduction of

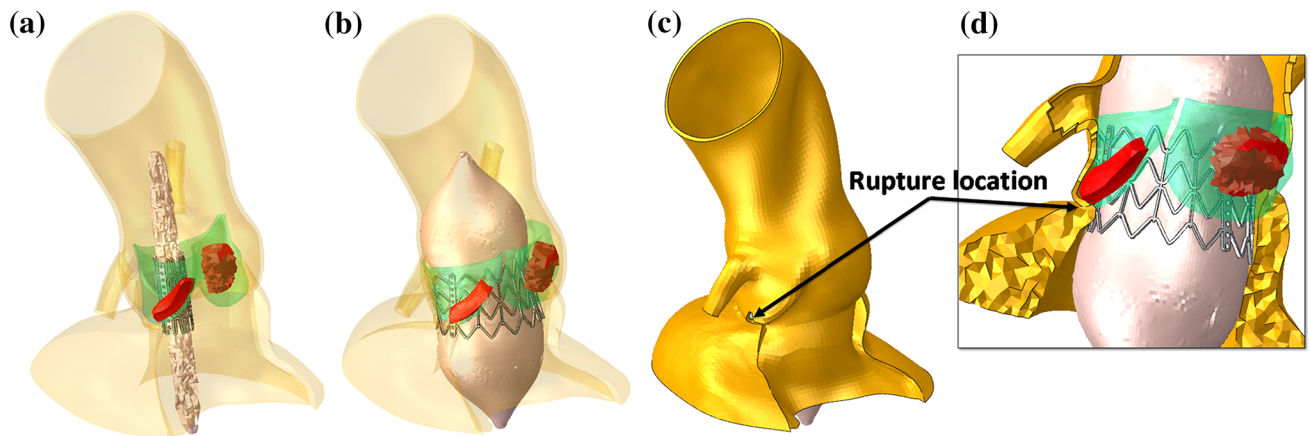


FIGURE 9. (a) Pre- and (b) post-deployment geometries of the aortic root of Case 1. (c) Full and (d) local views of the deformed the aortic root and balloon deployment indicates annulus tearing under the left coronary ostium due to dislodgement of calcification into the vulnerable part of the aortic sinus. The figure is from Wang *et al.*¹³⁶ with permission.

the stent diameter by 2–3 mm induces sharp bends in the leaflets during closure, which acted to increase the leaflet peak stress by 40.1–78.2% compared to the nominal valve under identical loading. Further reduction of the stent diameter by 4–5 mm increases the leaflet peak stresses by 124.1–158.6%. In the real scenario, the leaflet peak stresses during systole in the under-expanded configuration would also likely be higher than reported here,¹ because incomplete expansion can lead to increased transvalvular pressure gradients.^{14,45,54,63,65,69,88,142} Consequently, both short- and long-term functions may be compromised in an elliptically or under expanded deployed TAV.

Martin and Sun⁷⁹ recently investigated TAV leaflet durability through FE analysis by implementing a computational soft tissue fatigue damage model, which includes descriptions of the stress-softening and permanent set effects of glutaraldehyde-treated bovine pericardium subjected to cyclic loading.^{110,127} The effects of cyclic loading on TAV and surgical bioprosthetic valve leaflets were compared. In both valves, cyclic loading induced changes in the leaflet tissue properties and geometries, and altered the leaflet stress and strain patterns, which could not be predicted in traditional FE models utilizing instantaneous tissue properties. Under identical loading conditions, the TAV leaflets sustained higher stresses and strains as observed by Li and Sun,⁷³ which resulted in increased fatigue damage compared to the surgical valve leaflets. The simulation results suggest that the TAV durability may be significantly reduced compared to surgical valves from 20 years to about 7.8 years post-implantation. This model may be useful in optimizing TAV design parameters to improve leaflet durability, and assessing the effects of under expanded, elliptical, or non-uniformly expanded stent deployment on TAV durability.

FUTURE TAVR DESIGNS

The TAVR introduction has transformed the traditional surgical approach to heart valve disease by offering significantly minimal procedures particularly for high-risk patients who have been considered unsuitable for open-heart surgeries either in its traditional form or minimally-invasive.^{58,64} Major TAVR advantages to the traditional surgical approaches can be summarized as refraining cardiopulmonary bypass, aortic cross-clamping and sternotomy that significantly reduces patients' morbidity.⁴⁹ However, current guidelines do not yet recommend TAVR for patients with intermediate or lower risk for open heart surgery. These risks are usually quantified based on the Society of Thoracic Surgeons (STS) score²³ or the EuroSCORE (European System for Cardiac Operative Risk Evaluation).^{91,101}

Society of Thoracic Surgeons established a measure—STS AVR composite score—that includes two outcomes domains, risk-adjusted mortality and risk-adjusted morbidity related to aortic valve replacement complications (i.e., reoperation, stroke, kidney failure, infection of the chest wound, or prolonged need to be supported by a breathing machine, or ventilator).²³ In a similar fashion, EuroSCORE is a risk model that calculates the risk of death after a cardiac procedure. The model works based on 17 items of information about the patient, the cardiac condition and the proposed procedure to be performed,⁹¹ and uses logistic regression to calculate the mortality risk.¹⁰¹ High, intermediate and lower risks are usually quantified based on these scores.

Current guidelines do not recommend TAVR in patients at intermediate or low surgical risk since several issues affecting outcomes remain unresolved, including durability, subclinical thrombosis,⁷⁶ vascular

complications, neurological events, rhythm disturbances, and paravalvular leakage. Reducing the incidence of major adverse events associated with TAVR is crucial, as these risks are not acceptable to a standard-risk surgical population. However, innovations in devices and technologies for delivery system are rapid and unceasing, leading to the treatment of younger population in a near future. Additionally, PARTNER II trial showed that in intermediate-risk patients, second generation Edwards' SAPIEN system is comparable to SAVR with respect to the primary end point of death or disabling stroke.⁷¹ In parallel, there are several ongoing trials of novel transcatheter aortic valves, which aim to solve many of the issues that currently are major challenges to heart valve developers.^{81,132,145}

The current limitations of TAVR that prevents its use in lower risks patients are summarized below:

Vascular complications from large delivery systems, which necessitates smaller profiles.

PVL which necessitates better sealing strategies.^{59,72,129}

Device malpositioning, which necessitates repositionable and/or retrievable devices.¹³³ This is particularly important when TAVR procedures are performed by interventional cardiologists with less TAVR experience.

Permanent pacemaker, which necessitates a better understanding of the mechanical loads imposed by TAVR devices on the cardiac conduction system. Most investigators agree that conduction abnormalities are primarily due to mechanical compression of the cardiac conduction system by the device, although other factors may be involved.^{92,122,135}

Device failure, which necessitates a better understanding of the mechanical and biological durability of TAVR devices. Durability concerns may arise from sub-optimal deployment, leaflet calcification, and thrombus formation to mention a few. More recently, quantitative data has become available assessing transcatheter heart valves' leaflets durability.³⁰ The report estimates that TAV degeneration was about 50% within 8 years post-TAVR with early-generation balloon-expandable TAV devices.

TAVR involves delivery, deployment, and implantation of a crimped, stented valve within a diseased aortic valve or degenerated bioprosthesis. A major limitation of these procedures is the diameter to which the stent can be crimped without damaging the leaflet tissues within. Currently, only a handful of FDA-approved transcatheter valves (Fig. 1) are being used in elderly aortic stenosis patients.⁵⁸ TAV durability has not yet tested in any of the trials. However, a recent report from St. Paul's Hospital in Vancouver, Canada

suggests post-TAVR' long-term durability with early-generation balloon-expandable valves is a concern with significant increase in degeneration rate 5–7 years post-TAVR. The report estimates TAV degeneration to be about 50% within 8 years.³⁰

Avoid Stent-Crimp-Induced Leaflet Injury

More recently, quantitative data has become available assessing the crimping-related damage to transcatheter heart valves' leaflets. Most of these studies that rely on the histology of pericardial leaflets^{20,62,151} have credibly documented that mechanical stresses applied to pericardial leaflets result in disruption of their collagen fibers' natural patterns, and may lead to calcification and early valve problem.^{61,107,151} The results of a more recent study published in the *New England Journal of Medicine* by Makkar *et al.* indicate that transcatheter aortic valves may lead to subclinical leaflet thrombosis based on the results from PORTICO IDE trial in comparison to SAVORY and RESOLVE registries.⁷⁶ A potential mechanism could be the injured rough surface of the leaflet facilitating thrombus formation. Whether the stent-crimp damage to the leaflets is transient or permanent is a critical question that Alavi *et al.* have recently addressed.⁴ in their study. They tested the effect of stent crimping on collagen fibers of the bovine pericardial leaflets at the surface and in deeper layers under scanning electron microscopy (SEM) and second harmonic generation (SHG) microscopy.⁴ Uncrimped leaflet tissue samples were imaged, followed by imaging tissue segments after crimping in a stented valve, immediately following, at 20, and 60 min after crimping. The crimping experiments were performed for multiple crimped sizes (i.e., 14, 16, and 18 French) The results are shown in Fig. 10, indicating significant tissue damage occurring both at the surface of the pericardial tissue and through its depth. Moreover, the collagen fiber alteration induced by crimping is irreversible and does not return to its original arrangement over time.

In another study, Sinha and Kheradvar showed significant levels of elastin fragmentation in stent-crimped leaflets when compared to intact pericardial leaflets as shown in Fig. 11.^{113,114} In that study, Glutaraldehyde-fixed bovine pericardial leaflets (Neovasc, Richmond, BC, Canada) were sewn into a self-expandable Nitinol stent to make transcatheter valve. The valves were divided into two groups of crimped and uncrimped, and each group was split into two to be exposed either to a calcifying solution⁴⁰ or to control solution (normal phosphate buffered saline). For the crimped group, the valves were carefully crimped with a standard crimper at 18Fr and 14Fr and held crimped for 20 min. All the leaflets were then equally

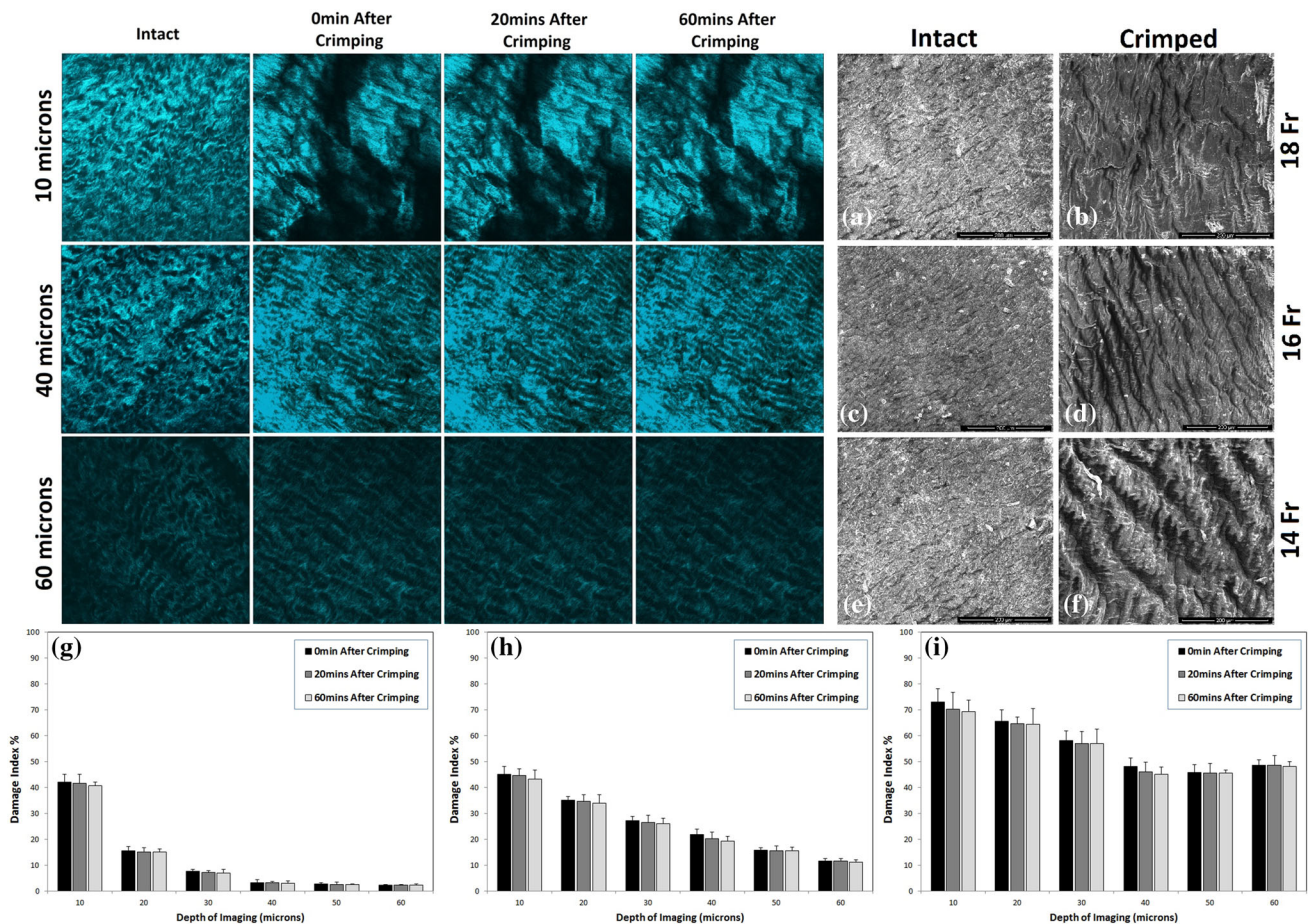


FIGURE 10. (Left) SHG microscopy images compare the structural changes of intact and crimped pericardial tissues at depths of 10, 40, and 60 microns for crimping sizes of 18Fr over time. (Right) SEM images show intact (a, c, and e) and crimped (b, d, and f) states of three different pericardial leaflets at 18Fr, 16Fr, and 14Fr, respectively. Comparison of SEM images demonstrates substantial changes on the surface microstructure due to crimping, which increased with reduction of the collapsed profile. The images are from Alavi *et al.*⁴ with permission.

cut into 0.5'' × 0.5'' segments and placed in 50 mL of either control, or calcifying solution similar to what described by Grases *et al.*⁴⁰ All groups were maintained at pH 7.5, 37 °C, on an orbital shaker at 400 rpm for 7 weeks. The samples were thoroughly rinsed with saline before embedding for histological analysis. Each tissue sample was individually embedded, sectioned and stained for elastin stain (Verhoff's Van Geison). Figure 11a demonstrates that the elastin fibers remain intact while the elastin fibers in crimped leaflet have been damaged in the depth of leaflet. The images show that elastin fibers in uncrimped leaflets have intact thin fibers morphology as pointed by black arrows in Fig. 11a in comparison to fragmented thin elastin fibers in crimped leaflet in Fig. 11b.

Transcatheter Heart Valve Calcification

Overall, stent-crimping damages in the depth of leaflets may increase calcification. While not yet sys-

tematically studied, microscopic damage to the leaflet collagen fibers is observed to be associated with calcification. In a recent *in vitro* calcification study, Kheradvar group at UC Irvine found that at the locations of significant damage to the collagen fibers within the leaflets, heavy calcification is present. The leaflet samples were studied after 50 million cycle accelerated wear test in presence of calcium–phosphate buffer at 37 °C. Figures 12a1 and 12b1 compare similar cross-section of a stent-crimped pericardial leaflet stained for calcium-phosphate (von Kóssa stain) and collagen fibers (Trichrome stain). Two local zones shown in Figs. 12a2 and 12b2 have been magnified and compared to reveal the association between the calcium deposition and collagen fiber damage in the stent-crimped leaflet. The higher calcium deposition (black color fibrils pointed by white arrows in Fig. 12a2) has been observed wherever collagen fibers are damaged indicated by faded blue fibrils pointed by black arrows in Fig. 12b2. This phenomenon is not noticed in the

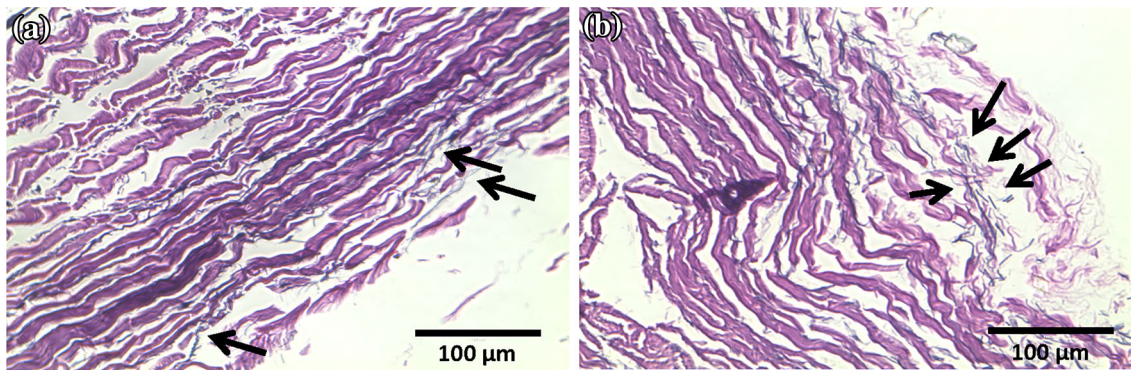


FIGURE 11. Verhoeff Van Gieson (VVG) staining of two cross sections extracted from Uncrimped (a) and crimped (b) bovine pericardial leaflets, respectively. Image A demonstrates intact elastin fibers (long black thin lines) in a cross section of an intact pericardial leaflet and image B shows fragmented elastin (short black thin lines) fibers in a stent-crimped leaflet. Elastin fibers in both cross sections were pointed by black arrows. Bars are 100 μm . The images are from Sinha and Kheradvar.¹¹⁴

areas where collagen fibers are still undamaged as shown in Fig. 12. More studies are underway to find out whether stent-crimping damage has causal relationship to leaflet calcification.

Transcatheter heart valves are prone to all the failure modes of surgical bioprosthetic heart valves.⁸⁹ In addition to those, specific features to these prostheses may contribute to their failure. Recent studies describe adverse events due to late-stage embolization, sub-clinical thrombosis and heart valve compression.^{76,89} Other investigators reported the failure of Edwards' SAPIEN and Medtronic's CoreValve due to severe leaflet calcification and cusp rupture.^{89,96} Structural valve failure is attributed primarily to severe leaflet calcification, causing cusp rupture and obstructive leaflet function.⁹⁶ The exact mechanisms that facilitate such rapid matrix degeneration are currently unknown; however, predominant reasons may include repeated chronic mechanical stresses on valvular leaflets causing initiation and accumulation of calcium deposition.¹³⁰ In a recent editorial correspondence in the *New England Journal of Medicine* published in March 2015, two patients with severe calcification of 29 mm CoreValve prostheses were presented and discussed only after 5 years post-implantation. Explant of the prosthesis revealed severe leaflet calcification, degeneration, and thrombus formation as shown in Fig. 13.⁹⁹

The recent clinical reports on calcification of transcatheter aortic valves may be only the tip of the iceberg, and now that a few years have passed since the first generation of implants, more clinical cases of crimp-induced problems may be found. Considering the substantial numbers of TAVR in the recent years, the first comprehensive 10-year follow-up data can be expected by 2020.⁹ Overall, the field of heart valve engineering currently lacks knowledge about the *in vivo* mechanistic processes involved in transcatheter valvular

lar dysfunction and calcification due to crimping damage.

Transcatheter Tissue Engineered Heart Valves

Transcatheter tissue engineered heart valve (TTEHV) technology is a recent advancement that combines minimally invasive strategies with living tissue engineered heart valves aiming to overcome the limitations of current TAVR technologies by providing growth, remodeling, and regeneration capabilities. There have been promising reports recently demonstrating a potential role for this technology in near future. These reports have taken advantage of the use of either classical *in vitro* tissue engineering approaches^{25,82,106} or the newly introduced *in situ* and "off-the-shelf" procedures.^{26,143} In conventional approaches, the tissue engineered valves are developed *in vitro* by seeding cells in a proper scaffold to generate living tissue, whereas the *in situ* approaches take into account the intrinsic regenerative capacity of the body to repopulate the substrate.⁵⁷ The latter provides an off-the-shelf feature that may extremely simplify the commercialization process and greatly enhance the clinical relevance of these valves. To the best of our knowledge, the introduction of TTEHV dates back to 2005 in the work of Ruiz *et al.*¹⁰² where they reported data on percutaneous implantation of decellularized valves made of biodegradable small intestinal submucosa (SIS) in a swine model. Even though the valves had progressive thickening after one-year implantation, the histologic remodeling and formation of new extracellular matrix (ECM) were promising. One year later, Stock *et al.*¹²³ showed that the use of a thin SIS wall inside a stent would protect the delicate decellularized valves from crimping damages. This suggested the use of tissue engineered valves that included their own vascular wall. Schmidt *et al.*¹⁰⁶ employed this

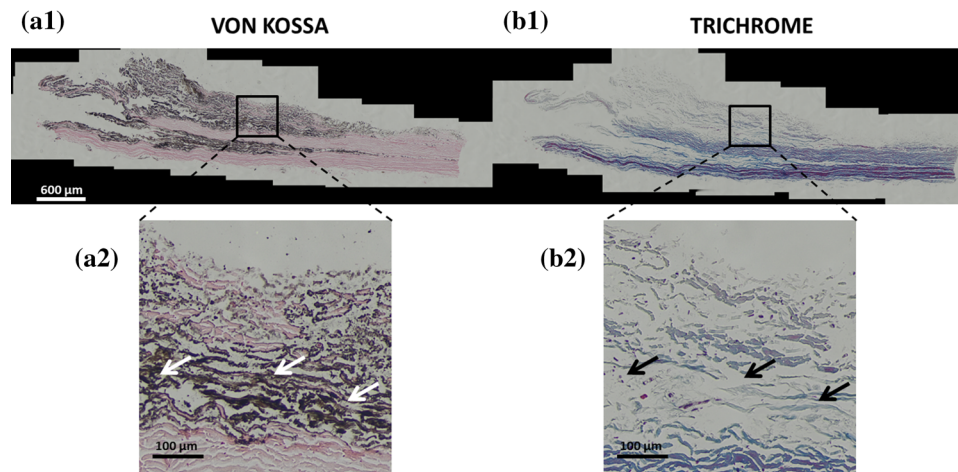


FIGURE 12. Von Kossa and Trichrome staining of a cross section extracted from a crimped bovine pericardial leaflet. Both cross sections were extracted from the same location in the leaflet and then were stained for calcification and ECM investigations. (a1) and (b1) are mosaic images (10 stitched images) of Van Kossa and Trichrome staining of the cross section, respectively. (a2) and (b2) are two magnified local images to compare the calcification versus ECM. Image (a2) and (b2) show hydroxyapatite deposition and collagen fibers in the same location of tissue. Black and white arrows represent the calcified and damaged ECM zones in the leaflet. Bars are 600 and 100 μm in mosaic and magnified images, respectively. The images are from Kheradvar Laboratory.

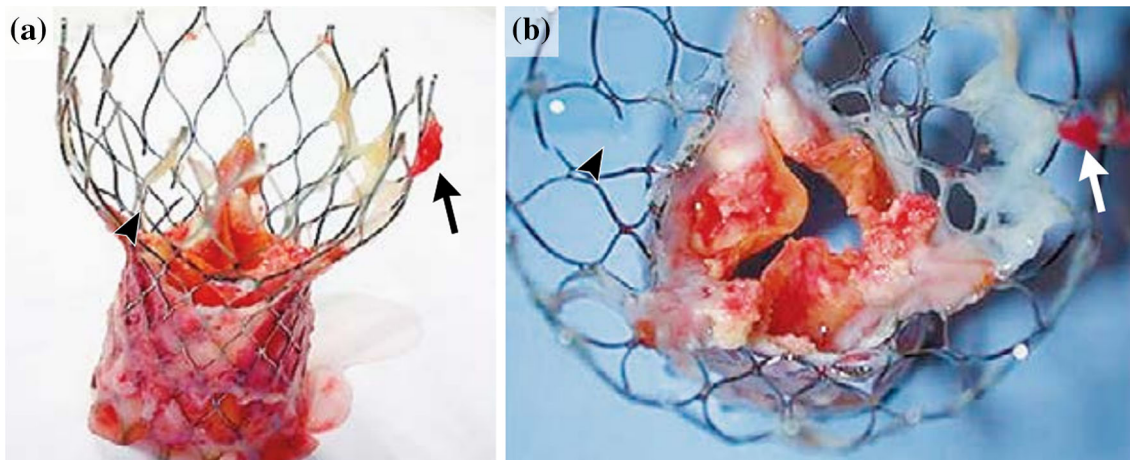


FIGURE 13. Panel (a) shows the presence of fresh thrombus (arrow), and panel (b) indicates the severe calcification and rupture of leaflets in a CoreValve. The images are from Richardt *et al.*, NEJM,⁹⁹ with permission.

concept and demonstrated the feasibility of TTEHV technology by using stem cells for fabrication of heart valves. Those valves were implanted transapically in sheep at pulmonary valve position and exhibited acceptable *in vivo* functionality for up to 8 weeks with better extracellular matrix formation but with thickened leaflets. At that time, it was speculated that the thickening effect is due to the crimping procedure, however, later on Dijkman *et al.*²⁵ showed that the thickening is due to functional *in vivo* remodeling procedures rather than crimping effects. Another promising and pioneering study was the work of Emmert *et al.*³⁵ where, in contrast to the other works, they tested bone-marrow based TTEHVs at aortic position instead of pulmonary position. The valves successfully

withstood the high pressure environment in the systemic circulation for the two-week period of this study. Recently, in two different works Weber *et al.*¹⁴³ and Driessen-Mol *et al.*²⁶ studied the use of off-the-shelf TTEHV approach in short term (up to 8 weeks) and long term (6 months), respectively. Both studies showed substantial ECM formation whereas the long-term study revealed significant recellularization and elastin fiber formation. Nevertheless, progressive regurgitation was observed as reported in Fig. 14, which was mentioned to be due to the suboptimal valve design.²⁶ New studies are currently underway to address these issues.^{5-7,120} It is noticeable in all these studies that no matter what approach is used in fabrication of TTEHV, this technology can eliminate the

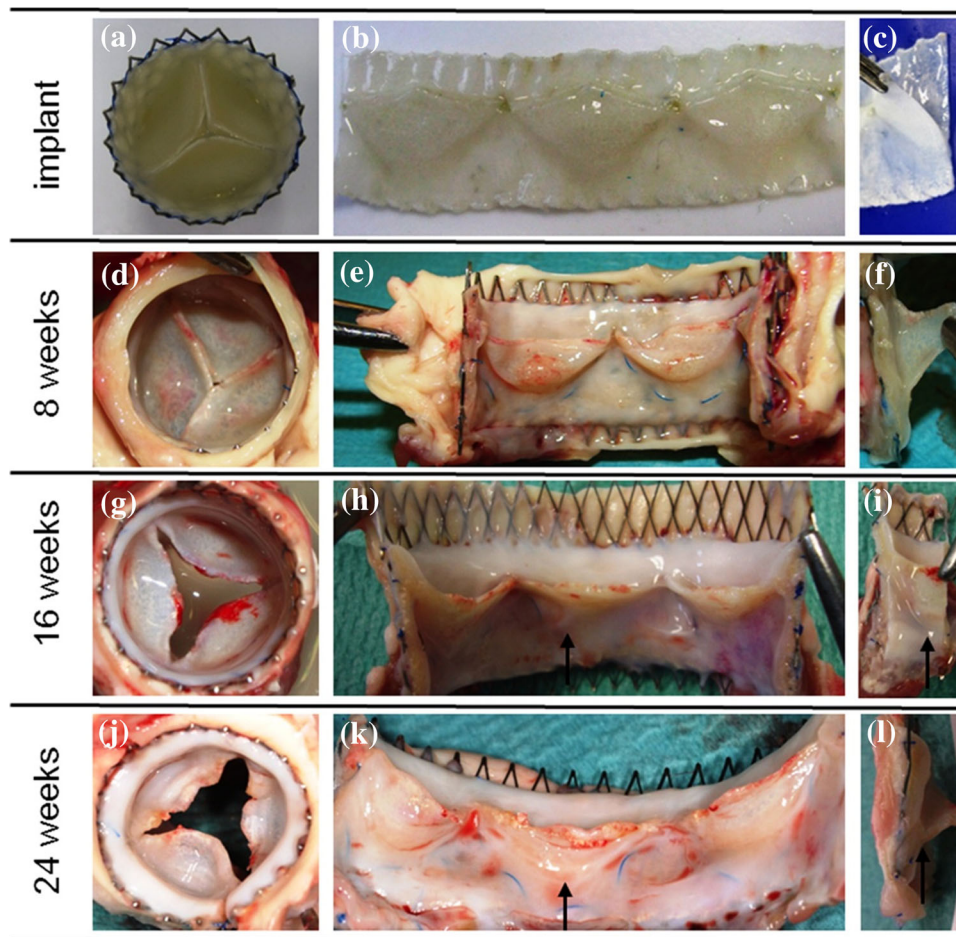


FIGURE 14. Macroscopic images of a TTEHV prior and after implantation in sheep pulmonary position. The valves were fabricated using biodegradable scaffolds and *in vitro* culture of vascular derived cells. The valves were decellularized prior to implantation to provide an off-the-shelf characteristic. The images are from Driessen-Mol *et al.*²⁶ with permission.

damages caused by TAVR stent-crimping mainly due to the self-repair capacity of the valves, which leads to healing and rapid ECM production post-implantation.^{25,106} Although the outcomes of these studies are promising, further studies are required to provide information on long term functionality and clinical safety and durability of these valves.

Summary

Despite the revolutionary aspect of transcatheter aortic heart valves in offering high-risk patients an alternative to open heart surgery, adverse effects are still to a large extent of unresolved causes and consequences. The potential failure modes and durability concerns associated with TAVs fall under fluid mechanics, structural mechanics and microscopic mechanics. More studies *in vivo* and *in vitro* are deemed necessary to better understand and connect the causes to the effects and therefore to better contribute to more

efficient and convenient TAV designs. To date, the main problems associated with TAVR revolve around paravalvular leakage, thrombosis, non-circular transcatheter heart valve deployment, conduction abnormalities, crimp-induced leaflet damage and patient-prosthesis mismatch. Paravalvular leakage can lead to congestive heart failure, arrhythmias, forceful contractions of the heart, and high degree of mortality. Valve positioning, types of TAVs (self-expanding versus balloon expanding), locations and size of calcium nodules and the increased stresses on the leaflets due to eccentric deployment have the biggest impact on determining the regurgitation possibility and level. A quantitative understanding of the biomechanical interaction between the native aortic tissue and the TAV is essential for better design and selection of the appropriate valve. Leaflet thrombosis is another major problem associated with TAVR. Stagnation of flow in the sinuses and crimp-induced damage are potential reasons behind leaflet thrombus formation. Position-

ing of the TAV, under-expansion, aggressive post-dilatation and the injured rough surface of the leaflets due to possible crimping may be the underlying factors on thrombus formation. Non-circular heart valve deployment is a direct consequence of the complication that arises when the TAV and the native valve interact. The non-circular shape is assumed due to the highly calcified native leaflets. This leads to high stress regions over the TAV leaflets under dynamic loading that may lead to calcification and early valve degeneration. Optimizing the TAV design parameters to improve leaflet durability taking into account the effects of stent-crimping, under-expansion and non-uniform expansion is necessary. Patient-prosthesis mismatch is also one of the most impactful adverse effects of TAVR especially in the valve-in-valve configuration. PPM induces additional flow resistance, which can only be overcome with higher pressures. The types and positioning of TAVs along with the types of the bio-prostheses dictate the efficiency and functionality of the ViV configuration. Despite the numerous studies, patient-specific anatomic characteristics are necessary for an optimum ViV setup. Valve-in-Valve-in-Valve procedures constitute another dimension of the ViV setup but more studies are still required for better understanding and assessment of the procedure. Overall, all the previous studies reported here have contributed to a significant understanding regarding TAVR procedures and have a big impact on implementing remedies in future TAV designs. Some of these remedies include implementing an inflow skirt, making a change in the frame material, avoiding stent crimping as it leads to the disruption of the fibers natural pattern and therefore calcification, and developing transcatheter tissue engineered valves that can withstand high pressure environment.

Procedures pertaining transcatheter aortic valve replacement are undergoing fast improvements. Despite the efforts and the diversity of the studies, more investigations are still required to acquire a comprehensive understanding and thus to implement this understanding into future design and developments and clinical applications to improve patients' quality of life and valve durability.

ACKNOWLEDGEMENTS

The authors gratefully acknowledge funding from the American Heart Association (Grant No. 16GRNT30980070) and National Institutes of Health (Grant Nos. HL119824, HL104080, HL108240 and HL127570). The content is solely the responsibility of

the authors and does not necessarily represent the official views of the American Heart Association or the National Institutes of Health.

REFERENCES

- ¹Abbasi, M., and A. N. Azadani. Leaflet stress and strain distributions following incomplete transcatheter aortic valve expansion. *J. Biomech.* 48:3672–3680, 2015.
- ²Abbasi, M., and A. N. Azadani. The synergistic impact of eccentric and incomplete stent deployment on transcatheter aortic valve leaflet stress distribution. *J. Am. Coll. Cardiol.* 66:B253–B254, 2015.
- ³Abdel-Wahab, M., T. Comberg, H. J. Buttner, M. El-Mawardy, K. Chatani, M. Gick, V. Geist, G. Richardt, F. J. Neumann, and T. R. Segeberg-Krozingen. Aortic regurgitation after transcatheter aortic valve implantation with balloon- and self-expandable prostheses a pooled analysis from a 2-center experience. *JACC Cardiovasc. Interv.* 7:284–292, 2014.
- ⁴Alavi, S. H., E. M. Groves, and A. Kheradvar. The effects of transcatheter valve crimping on pericardial leaflets. *Ann. Thorac. Surg.* 97:1260–1266, 2014.
- ⁵Alavi, S. H., and A. Kheradvar. Metal mesh scaffold for tissue engineering of membranes. *Tissue Eng. Part C Methods* 18:293–301, 2012.
- ⁶Alavi, S. H., and A. Kheradvar. A hybrid tissue-engineered heart valve. *Ann. Thorac. Surg.* 99:2183–2187, 2015.
- ⁷Alavi, S. H., W. F. Liu, and A. Kheradvar. Inflammatory response assessment of a hybrid tissue-engineered heart valve leaflet. *Ann. Biomed. Eng.* 41:316–326, 2013.
- ⁸Anderson, J. M., A. Rodriguez, and D. T. Chang. Foreign body reaction to biomaterials. *Semin. Immunol.* 20:86–100, 2008.
- ⁹Arsalan, M., and T. Walther. Durability of prostheses for transcatheter aortic valve implantation. *Nat. Rev. Cardiol.* 13:360–367, 2016.
- ¹⁰Astudillo, L. M., O. Santana, P. A. Urbanadt, A. M. Benjo, L. U. Elkayam, F. O. Nascimento, G. A. Lamas, and J. Lamelas. Clinical predictors of prosthesis-patient mismatch after aortic valve replacement for aortic stenosis. *Clinics* 67:55–60, 2012.
- ¹¹Bianchi, M., R. P. Ghosh, G. Marom, M. J. Slepian, and D. Bluestein. Simulation of transcatheter aortic valve replacement in patient-specific aortic roots: effect of crimping and positioning on device performance. In: 37th Annual International Conference of the IEEE Engineering in Medicine and Biology Society (EMBC), 2015, pp. 282–285.
- ¹²Azadani, A. N., N. Jaussaud, L. Ge, S. Chitsaz, T. A. M. Chuter, and E. E. Tseng. Valve-in-valve hemodynamics of 20-mm transcatheter aortic valves in small bioprostheses. *Ann. Thorac. Surg.* 92:548–555, 2011.
- ¹³Azadani, A. N., N. Jaussaud, P. B. Matthews, L. Ge, T. A. M. Chuter, and E. E. Tseng. Transcatheter aortic valves inadequately relieve stenosis in small degenerated bioprostheses. *Interact. CardioVasc. Thorac. Surg.* 11:70–77, 2010.
- ¹⁴Azadani, A. N., and E. E. Tseng. Transcatheter heart valves for failing bioprostheses: state-of-the-art review of valve-in-valve implantation. *Circulation* 4:621–628, 2011.

- ¹⁵Bailey, J., N. Curzen, and N. W. Bressloff. Assessing the impact of including leaflets in the simulation of tavi deployment into a patient-specific aortic root. *Comput. Methods Biomech. Biomed. Eng.* 19:733–744, 2016.
- ¹⁶Bapat, V. N., R. Attia, and M. Thomas. Effect of valve design on the stent internal diameter of a bioprosthetic valve: a concept of true internal diameter and its implications for the valve-in-valve procedure. *JACC Cardiovasc. Interv.* 7:115–127, 2014.
- ¹⁷Bianchi, M., R. P. Ghosh, G. Marom, M. J. Slepian, and D. Bluestein. Simulation of transcatheter aortic valve replacement in patient-specific aortic roots: effect of crimping and positioning on device performance. *Ann. Int. Conf. IEEE* 36:282–285, 2015.
- ¹⁸Capelli, C., G. M. Bosi, E. Cerri, J. Nordmeyer, T. Odenwald, P. Bonhoeffer, F. Migliavacca, A. M. Taylor, and S. Schievano. Patient-specific simulations of transcatheter aortic valve stent implantation. *Med. Biol. Eng. Comput.* 50:183–192, 2012.
- ¹⁹Daneshvar, S. A., and S. H. Rahimtoola. Valve prosthesis-patient mismatch (Vp-Pm) a long-term perspective. *J. Am. Coll. Cardiol.* 60:1123–1135, 2012.
- ²⁰de Buhr, W., S. Pfeifer, J. Slotta-Huspenina, E. Wintermantel, G. Lutter, and W. A. Goetz. Impairment of pericardial leaflet structure from balloon-expanded valved stents. *J. Thorac. Cardiovasc. Surg.* 143:1417–1421, 2012.
- ²¹Delgado, V., S. Kapadia, M. J. Schaliq, J. D. Schuijff, E. M. Tuzcu, and J. J. Bax. Transcatheter aortic valve implantation: implications of multimodality imaging in patient selection, procedural guidance, and outcomes. *Heart* 98:743–754, 2012.
- ²²Detaint, D., L. Lepage, D. Himbert, E. Brochet, D. Messika-Zeitoun, B. Lung, and A. Vahanian. Determinants of significant paravalvular regurgitation after transcatheter aortic valve implantation: impact of device and annulus discongruence. *JACC Cardiovasc. Interv.* 2:821–827, 2009.
- ²³Dewey, T., D. Brown, W. Ryan, M. Herbert, S. Prince, and M. Mack. Reliability of risk algorithms in predicting early and late operative outcomes in high-risk patients undergoing aortic valve replacement. *J. Thorac. Cardiovasc. Surg.* 135:180–187, 2008.
- ²⁴Di Martino, L. F. M., W. B. Vletter, B. Ren, C. Schultz, N. M. Van Mieghem, O. I. I. Soliman, M. Di Biase, P. P. de Jaegere, and M. L. Geleijnse. Prediction of paravalvular leakage after transcatheter aortic valve implantation. *Int. J. Cardiovasc. Imaging* 31:1461–1468, 2015.
- ²⁵Dijkman, P. E., A. Driessen-Mol, L. M. deHeer, J. Kluin, L. A. vanHerwerden, B. Odermatt, F. P. Baaijens, and S. P. Hoerstrup. Trans-apical versus surgical implantation of autologous ovine tissue-engineered heart valves. *J. Heart Valve Dis.* 21:670–678, 2012.
- ²⁶Driessen-Mol, A., M. Y. Emmert, P. E. Dijkman, L. Frese, B. Sanders, B. Weber, N. Cesarovic, M. Sidler, J. Leenders, and R. Jenni. Transcatheter implantation of homologous “off-the-shelf” tissue-engineered heart valves with self-repair capacity: long-term functionality and rapid in vivo remodeling in sheep. *J. Am. Coll. Cardiol.* 63:1320–1329, 2014.
- ²⁷Ducci, A., S. Tzamtzis, M. J. Mullen, and G. Burriesci. Hemodynamics in the valsalva sinuses after transcatheter aortic valve implantation (TAVI). *J. Heart Valve Dis.* 22:688–696, 2013.
- ²⁸Dumesnil, J., and P. Pibarot. Prosthesis-patient mismatch: an update. *Curr. Cardiol. Rep.* 13:250–257, 2011.
- ²⁹Dvir, D. Treatment of small surgical valves: clinical considerations for achieving optimal results in valve-in-valve procedures. *JACC Cardiovasc. Interv.* 8:2034–2036, 2015.
- ³⁰Dvir, D., H. Eltchaninoff, J. Ye, A. Kan, E. Durand, A. Bizios, A. Cheung, M. Aziz, M. Simonato, C. Tron, Y. Arbel, R. Moss, J. Leipsic, H. Ofek, G. Perlman, M. Barbanti, M. A. Seidman, P. Blanke, R. Yao, R. Boone, S. Lauck, S. Lichtenstein, D. Wood, A. Cribier, and J. Webb. First look at long-term durability of transcatheter heart valves: assessment of valve function up to 10-years after implantation. In: *EuroPCR (Paria)*: 2016.
- ³¹Dvir, D., J. Leipsic, P. Blanke, H. B. Ribeiro, R. Kornowski, A. Pichard, J. Rodes-Cabau, D. A. Wood, D. Stub, I. Ben-Dor, G. Maluenda, R. R. Makkar, and J. G. Webb. Coronary obstruction in transcatheter aortic valve-in-valve implantation: preprocedural evaluation, device selection, protection, and treatment. *Circulation* 8:10, 2015.
- ³²Dvir, D., and J. G. Webb. Transcatheter aortic valve-in-valve implantation for patients with degenerative surgical bioprosthetic valves. *Circ. J.* 79:695–703, 2015.
- ³³Dvir, D., J. G. Webb, S. Bleiziffer, M. Pasic, R. Waksman, S. Kodali, M. Barbanti, A. Latib, U. Schaefer, J. Rodes-Cabau, H. Treede, N. Piazza, D. Hildick-Smith, D. Himbert, T. Walther, C. Hengstenberg, H. Nissen, R. Bekerredjian, P. Presbitero, E. Ferrari, A. Segev, A. de Weger, S. Windecker, N. E. Moat, M. Napodano, M. Wilbring, A. G. Cerillo, S. Brecker, D. Tchetché, T. Lefevre, F. De Marco, C. Fiorina, A. S. Petronio, R. C. Teles, L. Testa, J. C. Laborde, M. B. Leon, R. Kornowski, and Valve In Valve Int Data Registry. Transcatheter aortic valve implantation in failed bioprosthetic surgical valves. *JAMA* 312:162–170, 2014.
- ³⁴EGgebrecht, H., U. Schafer, H. Treede, P. Boekstegers, J. Babin-Ebell, M. Ferrari, H. Mollmann, H. Baumgartner, T. Carrel, P. Kahlert, P. Lange, T. Walther, R. Erbel, R. H. Mehta, and M. Thielmann. Valve-in-valve transcatheter aortic valve implantation for degenerated bioprosthetic heart valves. *JACC Cardiovasc. Interv.* 4:1218–1227, 2011.
- ³⁵Emmert, M. Y., B. Weber, P. Wolint, L. Behr, S. Sammut, T. Frauenfelder, L. Frese, J. Scherman, C. E. Brokopp, and C. Templin. Stem cell-based transcatheter aortic valve implantation: first experiences in a pre-clinical model. *JACC Cardiovasc. Interv.* 5:874–883, 2012.
- ³⁶Gavina, C., A. Goncalves, C. Almeria, R. Hernandez, A. Leite-Moreira, F. Rocha-Goncalves, and J. Zamorano. Determinants of clinical improvement after surgical replacement or transcatheter aortic valve implantation for isolated aortic stenosis. *Cardiovasc. Ultrasound* 12:10, 2014.
- ³⁷Genereux, P., S. J. Head, R. Hahn, B. Daneault, S. Kodali, M. R. Williams, N. M. van Mieghem, M. C. Alu, P. W. Serruys, A. P. Kappetein, and M. B. Leon. Paravalvular leak after transcatheter aortic valve replacement: the new achilles’ heel? A comprehensive review of the literature. *J. Am. Coll. Cardiol.* 61:1125–1136, 2013.
- ³⁸Gooley, R. P., J. D. Cameron, and I. T. Meredith. Assessment of the geometric interaction between the lotus transcatheter aortic valve prosthesis and the native ventricular aortic interface by 320-multidetector computed tomography. *JACC Cardiovasc. Interv.* 8:740–749, 2015.
- ³⁹Gotzmann, M., M. Korten, W. Bojara, M. Lindstaedt, P. Rahlmann, A. Mugge, and A. Ewers. Long-term outcome of patients with moderate and severe prosthetic aortic

- valve regurgitation after transcatheter aortic valve implantation. *Am. J. Cardiol.* 110:1500–1506, 2012.
- ⁴⁰Grases, F., P. Sanchis, A. Costa-Bauzá, O. Bonnin, B. Isern, J. Perelló, and R. M. Prieto. Phytate inhibits bovine pericardium calcification in vitro. *Cardiovasc. Pathol.* 17:139–145, 2008.
- ⁴¹Grbic, S., T. Mansi, R. Ionasec, I. Voigt, H. Houle, M. John, M. Schoebinger, N. Navab, and D. Comaniciu. Image-based computational models for tavi planning: from ct images to implant deployment. *Med. Image Comput. Assist. Interv.* 16:395–402, 2013.
- ⁴²Groves, E. M., A. Falahatpisheh, J. L. Su, and A. Kheradvar. The effects of positioning of transcatheter aortic valve on the fluid dynamics of the aortic root. *ASAIO J.* 60:545–552, 2014.
- ⁴³Gunning, P. S., N. Saikrishnan, L. M. McNamara, and A. P. Yoganathan. An in vitro evaluation of the impact of eccentric deployment on transcatheter aortic valve hemodynamics. *Ann. Biomed. Eng.* 42:1195–1206, 2014.
- ⁴⁴Gunning, P. S., T. J. Vaughan, and L. M. McNamara. Simulation of self expanding transcatheter aortic valve in a realistic aortic root: implications of deployment geometry on leaflet deformation. *Ann. Biomed. Eng.* 42:1989–2001, 2014.
- ⁴⁵Gurvitch, R., A. Cheung, J. Ye, D. Wood, A. Willson, S. Togweiler, R. Binder, and J. Webb. Transcatheter valve-in-valve implantation for failed surgical bioprosthetic valves. *J. Am. Coll. Cardiol.* 58:2196–2209, 2011.
- ⁴⁶Hakki, A. H., A. S. Iskandrian, C. E. Bemis, D. Kimbiris, G. S. Mintz, B. L. Segal, and C. Brice. A simplified valve formula for the calculation of stenotic cardiac-valve areas. *Circulation* 63:1050–1055, 1981.
- ⁴⁷Hansson, N. C., L. Thuesen, V. E. Hjortdal, J. Leipsic, H. R. Andersen, S. H. Poulsen, J. G. Webb, E. H. Christiansen, L. E. Rasmussen, L. R. Krusell, K. Terp, K. E. Klaborg, M. Tang, J. F. Lassen, H. E. Botker, and B. L. Norgaard. Three-dimensional multidetector computed tomography versus conventional 2-dimensional transesophageal echocardiography for annular sizing in transcatheter aortic valve replacement: influence on postprocedural paravalvular aortic regurgitation. *Catheter Cardiovasc. Interv.* 82:977–986, 2013.
- ⁴⁸Hatoum, H., J. A. Crestanello, and L. P. Dasi. Possible subclinical leaflet thrombosis in bioprosthetic aortic valves. *N. Engl. J. Med.* 374:1591–1591, 2016.
- ⁴⁹Hemmann, K., M. Sirotna, S. De Rosa, J. R. Ehrlich, H. Fox, J. Weber, A. Moritz, A. M. Zeiher, I. Hofmann, V. Schächinger, M. Doss, H. Sievert, S. Fichtlscherer, and R. Lehmann. The STS score is the strongest predictor of long-term survival following transcatheter aortic valve implantation, whereas access route (transapical versus transfemoral) has no predictive value beyond the periprocedural phase. *Interact. CardioVasc. Thorac. Surg.* 17:359–364, 2013.
- ⁵⁰Hoffmayer, K. S., C. Zellner, D. M. Kwan, S. Konety, E. Foster, P. Moore, and Y. Yeghiazarians. Closure of a paravalvular aortic leak with the use of 2 amplatzer devices and real-time 2- and 3-dimensional transesophageal echocardiography. *Tex. Heart Inst. J.* 38:81–84, 2011.
- ⁵¹Iqbal, J., and P. W. Serruys. Comparison of medtronic corevalve and edwards SAPIEN XT for transcatheter aortic valve implantation: the need for an imaging-based personalized approach in device selection. *JACC Cardiovasc. Interv.* 7:293–295, 2014.
- ⁵²Jabbour, A., T. F. Ismail, N. Moat, A. Gulati, I. Roussin, F. Alpendurada, B. Park, F. Okoroafor, A. Asgar, S. Barker, S. Davies, S. K. Prasad, M. Rubens, and R. H. Mohiaddin. Multimodality imaging in transcatheter aortic valve implantation and post-procedural aortic regurgitation comparison among cardiovascular magnetic resonance, cardiac computed tomography, and echocardiography. *J. Am. Coll. Cardiol.* 58:2165–2173, 2011.
- ⁵³Jilaihawi, H., A. Asgar, and R. Bonan. Good outcome and valve function despite medtronic-corevalve underexpansion. *Catheter Cardiovasc. Interv.* 76:1022–1025, 2010.
- ⁵⁴John, D., L. Buellesfeld, S. Yuecel, R. Mueller, G. Lattios, H. Beucher, U. Gerckens, and E. Grube. Correlation of device landing zone calcification and acute procedural success in patients undergoing transcatheter aortic valve implantations with the self-expanding corevalve prosthesis. *JACC Cardiovasc. Interv.* 3:233–243, 2010.
- ⁵⁵Kappetein, A. P., S. J. Head, P. Généreux, N. Piazza, N. M. Van Mieghem, E. H. Blackstone, T. G. Brott, D. J. Cohen, D. E. Cutlip, and G.-A. van Es. Updated standardized endpoint definitions for transcatheter aortic valve implantation: the valve academic research consortium-2 consensus document. *J. Am. Coll. Cardiol.* 60:1438–1454, 2012.
- ⁵⁶Kheradvar, A., and A. Falahatpisheh. The effects of dynamic saddle annulus and leaflet length on transmitral flow pattern and leaflet stress of a bi-leaflet bioprosthetic mitral valve. *J. Heart Valve Dis.* 21:225–233, 2012.
- ⁵⁷Kheradvar, A., E. M. Groves, L. P. Dasi, S. H. Alavi, R. Tranquillo, K. J. Grande-Allen, C. A. Simmons, B. Griffith, A. Falahatpisheh, C. J. Goergen, M. R. K. Mofrad, F. Baaijens, S. H. Little, and S. Canic. Emerging trends in heart valve engineering: part I. Solutions for future. *Ann. Biomed. Eng.* 43:833–843, 2014.
- ⁵⁸Kheradvar, A., E. M. Groves, C. J. Goergen, S. H. Alavi, R. Tranquillo, C. A. Simmons, L. P. Dasi, K. J. Grande-Allen, M. R. K. Mofrad, A. Falahatpisheh, B. Griffith, F. Baaijens, S. H. Little, and S. Canic. Emerging trends in heart valve engineering: part II. Novel and standard technologies for aortic valve replacement. *Ann. Biomed. Eng.* 43:844–857, 2015.
- ⁵⁹Kheradvar, A., E. L. Groves, and E. E. Tseng. Proof of concept of FOLDAVALVE a novel 14Fr totally repositionable and retrievable transcatheter aortic valve. *EuroIntervention* 11:591–596, 2015.
- ⁶⁰Kheradvar, A., J. Kasalko, D. Johnson, and M. Gharib. An in-vitro study of changing profile heights in mitral bioprostheses and their influence on flow. *ASAIO J.* 52:34–38, 2006.
- ⁶¹Khoffi, F., F. Heim, N. Chakfe, and J. T. Lee. ‘Transcatheter fiber heart valve: effect of crimping on material performances. *J. Biomed. Mater. Res. B Appl. Biomater.* 103:1488–1497, 2015.
- ⁶²Kiefer, P., F. Gruenwald, J. Kempfert, H. Aupperle, J. Seeburger, F. Mohr, and T. Walther. Crimping may affect the durability of transcatheter valves: an experimental analysis. *Ann. Thorac. Surg.* 92:155–160, 2011.
- ⁶³Klotz, S., M. Scharfshwerdt, D. Richardt, and H. H. Sievers. Failed valve-in-valve transcatheter aortic valve implantation. *JACC Cardiovasc. Interv.* 5:591–592, 2012.
- ⁶⁴Kodali, S. K., M. R. Williams, C. R. Smith, L. G. Svensson, J. G. Webb, R. R. Makkar, G. P. Fontana, T. M. Dewey, V. H. Thourani, A. D. Pichard, M. Fischbein, W. Y. Szeto, S. Lim, K. L. Greason, P. S. Teirstein, S. C.

- Malaisrie, P. S. Douglas, R. T. Hahn, B. Whisenant, A. Zajarias, D. L. Wang, J. J. Akin, W. N. Anderson, M. B. Leon, and Investigators Partner Trial. Two-year outcomes after transcatheter or surgical aortic-valve replacement. *N. Engl. J. Med.* 366:1686–1695, 2012.
- ⁶⁵Koos, R., A. Mahnken, G. Dohmen, K. Brehmer, R. Günther, R. Autschbach, N. Marx, and R. Hoffmann. Association of aortic valve calcification severity with the degree of aortic regurgitation after transcatheter aortic valve implantation. *Int. J. Cardiol.* 150:142–145, 2011.
- ⁶⁶Kumar, G., V. Raghav, S. Lerakis, and A. Yoganathan. High transcatheter valve replacement may reduce washout in the aortic sinuses: an in-vitro study. *J. Heart Valve Dis.* 24:22–29, 2015.
- ⁶⁷Latib, A., T. Naganuma, M. Abdel-Wahab, H. Danenberg, L. Cota, M. Barbanti, H. Baumgartner, A. Finkelstein, V. Legrand, J. S. de Lezo, J. Kefer, D. Messika-Zeitoun, G. Richardt, E. Stabile, G. Kaleschke, A. Vahanian, J. C. Laborde, M. B. Leon, J. G. Webb, V. F. Panoulas, F. Maisano, O. Alfieri, and A. Colombo. Treatment and clinical outcomes of transcatheter heart valve thrombosis. *Circulation* 8:12, 2015.
- ⁶⁸Leber, A. W., W. Eichinger, J. Rieber, M. Lieber, S. Schleger, U. Ebersberger, M. Deichstetter, J. Vogel, T. Helmberger, D. Antoni, G. Riess, E. Hoffmann, and A. M. Kasel. MSCT guided sizing of the Edwards Sapien XT TAVI device: impact of different degrees of oversizing on clinical outcome. *Int. J. Cardiol.* 168:2658–2664, 2013.
- ⁶⁹Leber, A., M. Kasel, T. Ischinger, U. Ebersberger, D. Antoni, M. Schmidt, G. Riess, V. Renz, A. Huber, T. Helmberger, and E. Hoffmann. Aortic valve calcium score as a predictor for outcome after Tavi using the corevalve revalving system. *Int. J. Cardiol.* 166:652–657, 2013.
- ⁷⁰Leipsic, J., T. H. Yang, and J. K. Min. Computed tomographic imaging of transcatheter aortic valve replacement for prediction and prevention of procedural complications. *Circulation* 6:597–605, 2013.
- ⁷¹Leon, M. B., C. R. Smith, M. J. Mack, R. R. Makkar, L. G. Svensson, S. K. Kodali, V. H. Thourani, E. M. Tuzcu, D. C. Miller, H. C. Herrmann, D. Doshi, D. J. Cohen, A. D. Pichard, S. Kapadia, T. Dewey, V. Babaliarios, W. Y. Szeto, M. R. Williams, D. Kereiakes, A. Zajarias, K. L. Greason, B. K. Whisenant, R. W. Hodson, J. W. Moses, A. Trento, D. L. Brown, W. F. Fearon, P. Pibarot, R. T. Hahn, W. A. Jaber, W. N. Anderson, M. C. Alu, and J. G. Webb. Transcatheter or surgical aortic-valve replacement in intermediate-risk patients. *N. Engl. J. Med.* 374:1609–1620, 2016.
- ⁷²Lerakis, S., S. S. Hayek, and P. S. Douglas. Paravalvular aortic leak after transcatheter aortic valve replacement current knowledge. *Circulation* 127:397–407, 2013.
- ⁷³Li, K., and W. Sun. Simulated thin pericardial bioprosthetic valve leaflet deformation under static pressure-only loading conditions: implications for percutaneous valves. *Ann. Biomed. Eng.* 38:2690–2701, 2010.
- ⁷⁴Linke, A., F. Woitek, M. W. Merx, C. Schiefer, S. Mobius-Winkler, D. Holzhey, A. Rastan, J. Ender, T. Walther, M. Kelm, F. W. Mohr, and G. Schuler. Valve-in-valve implantation of medtronic corevalve prosthesis in patients with failing bioprosthetic aortic valves. *Circulation* 5:689–697, 2012.
- ⁷⁵Litmanovich, D., E. Ghersin, D. Burke, J. Popma, M. Shahrzad, and A. Bankier. Imaging in transcatheter aortic valve replacement (TAVR): role of the radiologist. *Insights Into Imaging* 5:123–145, 2014.
- ⁷⁶Makkar, R. R., G. Fontana, H. Jilaihawi, T. Chakravarty, K. F. Kofoed, O. de Backer, F. M. Asch, C. E. Ruiz, N. T. Olsen, A. Trento, J. Friedman, D. Berman, W. Cheng, M. Kashif, V. Jelnin, C. A. Kliger, H. Guo, A. D. Pichard, N. J. Weissman, S. Kapadia, E. Manasse, D. L. Bhatt, M. B. Leon, and L. Sondergaard. Possible sub-clinical leaflet thrombosis in bioprosthetic aortic valves. *N. Engl. J. Med.* 373:2015–2024, 2015.
- ⁷⁷Makkar, R. R., G. P. Fontana, H. Jilaihawi, S. Kapadia, A. D. Pichard, P. S. Douglas, V. H. Thourani, V. C. Babaliarios, J. G. Webb, H. C. Herrmann, J. E. Bavaria, S. Kodali, D. L. Brown, B. Bowers, T. M. Dewey, L. G. Svensson, M. Tuzcu, J. W. Moses, M. R. Williams, R. J. Siegel, J. J. Akin, W. N. Anderson, S. Pocock, C. R. Smith, M. B. Leon, and Investigators Partner Trial. Transcatheter aortic-valve replacement for inoperable severe aortic stenosis. *N. Engl. J. Med.* 366:1696–1704, 2012.
- ⁷⁸Martin, C., T. Pham, and W. Sun. Significant differences in the material properties between aged human and porcine aortic tissues. *Eur. J. Cardiothorac. Surg.* 40:28–34, 2011.
- ⁷⁹Martin, C., and W. Sun. Comparison of transcatheter aortic valve and surgical bioprosthetic valve durability: a fatigue simulation study. *J. Biomech.* 48:3026–3034, 2015.
- ⁸⁰Masri, A., P. Schoenhagen, L. Svensson, S. R. Kapadia, B. P. Griffin, E. M. Tuzcu, and M. Y. Desai. Dynamic characterization of aortic annulus geometry and morphology with multimodality imaging: predictive value for aortic regurgitation after transcatheter aortic valve replacement. *J. Thorac. Cardiovasc. Surg.* 147:1847–1854, 2014.
- ⁸¹Meredith, I. T., K. L. Hood, N. Haratani, D. J. Allocco, and K. D. Dawkins. Boston scientific lotus valve. *EuroIntervention* 8(Suppl Q):Q70–Q74, 2012.
- ⁸²Metzner, A., U. A. Stock, K. Iino, G. Fischer, T. Huemme, J. Boldt, J. H. Braesen, B. Bein, J. Renner, and J. Cremer. Percutaneous pulmonary valve replacement: autologous tissue-engineered valved stents. *Cardiovasc. Res.* 88:453–461, 2010.
- ⁸³Midha, P. A., V. Raghav, J. F. Condado, S. Arjunon, D. E. Uceda, S. Lerakis, V. H. Thourani, V. Babaliarios, and A. P. Yoganathan. How can we help a patient with a small failing bioprosthesis? An in vitro case study. *JACC Cardiovasc. Interv.* 8:2026–2033, 2015.
- ⁸⁴Midha, P. A., V. Raghav, J. F. Condado, I. U. Okafor, S. Lerakis, V. H. Thourani, V. Babaliarios, and A. P. Yoganathan. Valve Type, size, and deployment location affect hemodynamics in an in vitro valve-in-valve model. *JACC Cardiovasc. Interv.* 9:1618–1628, 2016.
- ⁸⁵Midha, P. A., V. Raghav, I. Okafor, and A. P. Yoganathan. The effect of valve-in-valve implantation height on sinus flow. *Ann. Biomed. Eng.* 2016. doi: [10.1007/s10439-016-1642-2](https://doi.org/10.1007/s10439-016-1642-2).
- ⁸⁶Moat, N. E., P. Ludman, M. A. de Belder, B. Bridgewater, A. D. Cunningham, C. P. Young, M. Thomas, J. Kovac, T. Spyt, P. A. MacCarthy, O. Wendler, D. Hildick-Smith, S. W. Davies, U. Trivedi, D. J. Blackman, R. D. Levy, S. J. D. Brecker, A. Baumbach, T. Daniel, H. Gray, and M. J. Mullen. Long-term outcomes after transcatheter aortic valve implantation in high-risk patients with severe aortic stenosis the UK TAVI (United Kingdom transcatheter aortic valve implantation) registry. *J. Am. Coll. Cardiol.* 58:2130–2138, 2011.

- ⁸⁷Morganti, S., M. Conti, M. Aiello, A. Valentini, A. Mazzola, A. Reali, and F. Auricchio. Simulation of transcatheter aortic valve implantation through patient-specific finite element analysis: two clinical cases. *J. Biomech.* 47:2547–2555, 2014.
- ⁸⁸Muñoz-García, A. J., J. H. Alonso-Briales, M. F. Jiménez-Navarro, J. Caballero-Borrego, A. J. Domínguez-Franco, I. Rodríguez-Bailón, M. Such-Martínez, J. M. Hernández-García, and E. de Teresa-Galván. Mechanisms, treatment and course of paravalvular aortic regurgitation after percutaneous implantation of the corevalve aortic prosthesis. *Int. J. Cardiol.* 149:389–392, 2011.
- ⁸⁹Mylotte, D., A. Andalib, P. Theriault-Lauzier, M. Dorfmeister, M. Girgis, W. Alharbi, M. Chetrit, C. Galatas, S. Mamane, I. Sebag, J. Buithieu, L. Bilodeau, B. de Varennes, K. Lachapelle, R. Lange, G. Martucci, R. Virmani, and N. Piazza. Transcatheter heart valve failure: a systematic review. *Eur. Heart J.* 36:1306–1327, 2014.
- ⁹⁰Mylotte, D., and N. Piazza. Transcatheter aortic valve replacement failure déjà vu ou jamais vu? *Circulation* 8:e002531, 2015.
- ⁹¹Nashef, S. A. M., F. Roques, P. Michel, E. Gauducheau, S. Lemeshow, R. Salamon, the Euro SCORE study, and the Euro SCORE study. European system for cardiac operative risk evaluation (Euroscore). *Eur. J. Cardiothorac. Surg.* 16:9–13, 1999.
- ⁹²Nazif, T. M., J. M. Dizon, R. T. Hahn, K. Xu, V. Babaliaros, P. S. Douglas, M. F. El-Chami, H. C. Herrmann, M. Mack, R. R. Makkar, D. C. Miller, A. Pichard, E. M. Tuzcu, W. Y. Szeto, J. G. Webb, J. W. Moses, C. R. Smith, M. R. Williams, M. B. Leon, and S. K. Kodali. Predictors and clinical outcomes of permanent pacemaker implantation after transcatheter aortic valve replacement: the partner (placement of aortic transcatheter valves) trial and registry. *JACC Cardiovasc. Interv.* 8:60–69, 2015.
- ⁹³Neragi-Miandoab, S., and R. E. Michler. A review of most relevant complications of transcatheter aortic valve implantation. *ISRN Cardiol.* 2013:956252, 2012.
- ⁹⁴Nishimura, R. A., C. M. Otto, R. O. Bonow, B. A. Carabello, J. P. Erwin, R. A. Guyton, P. T. O’Gara, C. E. Ruiz, N. J. Skubas, and P. Sorajja. 2014 AHA/ACC guideline for the management of patients with valvular heart disease: a report of the American College of Cardiology/American Heart Association Task Force on practice guidelines. *J. Am. Coll. Cardiol.* 63:e57–e185, 2014.
- ⁹⁵Noble, S., A. Basmaadjian, and R. Ibrahim. Transcatheter prosthetic paravalvular leak closure. *Cardiovasc. Med.* 15:245–252, 2012.
- ⁹⁶Ong, S. H., R. Mueller, and S. Iversen. Early calcific degeneration of a corevalve transcatheter aortic bioprosthesis. *Eur. Heart J.* 33:586, 2012.
- ⁹⁷Rahimtoola, S. H. Problem of valve prosthesis patient mismatch. *Circulation* 58:20–24, 1978.
- ⁹⁸Ramineni, R., A. Almomani, A. Kumar, and M. Ahmad. Role of multimodality imaging in transcatheter aortic valve replacement. *Echocardiography A* 32:677–698, 2015.
- ⁹⁹Richardt, D., T. Hanke, and H. H. Sievers. Two cases of heart failure after implantation of a corevalve prosthesis. *N. Engl. J. Med.* 372:1079–1081, 2015.
- ¹⁰⁰Rodes-Cabau, J., E. Dumont, and D. Doyle. “Valve-in-valve” for the treatment of paravalvular leaks following transcatheter aortic valve implantation. *Catheter Cardiovasc. Interv.* 74:1116–1119, 2009.
- ¹⁰¹Roques, F., P. Michel, A. R. Goldstone, and S. A. M. Nashef. The logistic euroscore. *Eur. Heart J.* 24:882–882, 2003.
- ¹⁰²Ruiz, C. E., M. Iemura, S. Medie, P. Varga, W. G. VanAlstine, S. Mack, A. Deligio, N. Fearnot, U. H. Beier, and D. Pavcnik. Transcatheter placement of a low-profile biodegradable pulmonary valve made of small intestinal submucosa: a long-term study in a swine model. *J. Thorac. Cardiovasc. Surg.* 130:477–484, 2005.
- ¹⁰³Ruiz, C. E., V. Jelmin, I. Kronzon, Y. Dudi, R. Del Valle-Fernandez, B. N. Einhorn, P. T. L. Chiam, C. Martinez, R. Eiros, G. Roubin, and H. A. Cohen. Clinical outcomes in patients undergoing percutaneous closure of periprosthetic paravalvular leaks. *J. Am. Coll. Cardiol.* 58:2210–2217, 2011.
- ¹⁰⁴Russ, C., R. Hopf, S. Hirsch, S. Sundermann, V. Falk, G. Szekely, and M. Gessat. Simulation of transcatheter aortic valve implantation under consideration of leaflet calcification. *Conf. Proc. IEEE Eng. Med. Biol. Soc.* 2013:711–714, 2013.
- ¹⁰⁵Schewel, D., C. Frerker, J. Schewel, P. Wohlmuth, F. Meincke, T. Thielsen, F. Kreidel, K. H. Kuck, and U. Schafer. Clinical impact of paravalvular leaks on biomarkers and survival after transcatheter aortic valve implantation. *Catheter Cardiovasc. Interv.* 85:502–514, 2015.
- ¹⁰⁶Schmidt, D., P. E. Dijkman, A. Driessen-Mol, R. Stenger, C. Mariani, A. Puolakka, M. Rissanen, T. Deichmann, B. Odermatt, and B. Weber. Minimally-invasive implantation of living tissue engineered heart valves: a comprehensive approach from autologous vascular cells to stem cells. *J. Am. Coll. Cardiol.* 56:510–520, 2010.
- ¹⁰⁷Schoen, F. J., and R. J. Levy. Calcification of tissue heart valve substitutes: progress toward understanding and prevention. *Ann. Thorac. Surg.* 79:1072–1080, 2005.
- ¹⁰⁸Schultz, C. J., A. Weustink, N. Piazza, A. Otten, N. Mollet, G. Krestin, R. J. van Geuns, P. de Feyter, P. W. J. Serruys, and P. de Jaegere. Geometry and degree of apposition of the corevalve revalving system with multislice computed tomography after implantation in patients with aortic stenosis. *J. Am. Coll. Cardiol.* 54:911–918, 2009.
- ¹⁰⁹Sedaghat, A., J. M. Sinning, M. Utzenrath, P. F. Ghalati, C. Schmitz, N. Werner, G. Nickenig, E. Grube, S. Ensminger, U. Steineseifer, and M. Kuetting. Hydrodynamic performance of the medtronic corevalve and the Edwards Sapien Xt transcatheter heart valve in surgical bioprostheses: an in vitro valve-in-valve model. *Ann. Thorac. Surg.* 101:118–124, 2016.
- ¹¹⁰Sellaro, T., D. Hildebrand, Q. Lu, N. Vyavahare, M. Scott, and M. Sacks. Effects of collagen fiber orientation on the response of biologically derived soft tissue biomaterials to cyclic loading. *J. Biomed. Mater. Res., Part A* 80A:194–205, 2007.
- ¹¹¹Sheriff, J., D. Bluestein, G. Girdhar, and J. Jesty. High-shear stress sensitizes platelets to subsequent low-shear conditions. *Ann. Biomed. Eng.* 38:1442–1450, 2010.
- ¹¹²Simonato, M., and D. Dvir. In vitro evaluation of implantation depth in valve-in-valve using different transcatheter heart valves. *Euro Interv.* 12:909–917, 2016.
- ¹¹³Sinha, A. and A. Kheradvar. The effect of stent-crimping of transcatheter heart valves on premature leaflet calcifi-

- cation. In: The Heart Valve Society inaugural scientific meeting (Monte Carlo, Monaco: 2015).
- ¹¹⁴Sinha, A., and A. Kheradvar. Abstract 17659: leaflet calcification and matrix damage due to transcatheter heart valve crimping. *Circulation* 132:A17659, 2015.
- ¹¹⁵Sinning, J. M., M. Vasa-Nicotera, D. Chin, C. Hammerstingl, A. Ghanem, J. Bence, J. Kovac, E. Grube, G. Nickenig, and N. Werner. Evaluation and management of paravalvular aortic regurgitation after transcatheter aortic valve replacement. *J. Am. Coll. Cardiol.* 62:11–20, 2013.
- ¹¹⁶Sinning, J.-M., N. Werner, G. Nickenig, and E. Grube. Next-generation transcatheter heart valves: current trials in Europe and the USA. *Methodist DeBakey Cardiovasc. J.* 8:9–12, 2012.
- ¹¹⁷Sirois, E., Q. Wang, and W. Sun. Fluid simulation of a transcatheter aortic valve deployment into a patient-specific aortic root. *Cardiovasc. Eng. Technol.* 2:186–195, 2011.
- ¹¹⁸Smolka, G., and W. Wojakowski. (2010) Paravalvular leak—important complication after implantation of prosthetic valve. In: ESC Nov (2010).
- ¹¹⁹Smuts, A. N., D. C. Blaine, C. Scheffer, H. Weich, A. F. Doubell, and K. H. Dellimore. Application of finite element analysis to the design of tissue leaflets for a percutaneous aortic valve. *J. Mech. Behav. Biomed. Mater.* 4:85–98, 2011.
- ¹²⁰Spiestersbach, H., L. Bruder, B. Sanders, E. Fioretta, T. Radtke, M. Bartosch, H. Peters, K. Brakmann, M. Sigler, and L. Frese. One year in-vivo functionality of transvenously implanted tissue-engineered pulmonary heart valves in sheep. *Thorac. Cardiovasc. Surg.* 64:OP157, 2016.
- ¹²¹Stahli, B., W. Maier, R. Corti, T. Luscher, R. Jenni, and F. Tanner. Aortic regurgitation after transcatheter aortic valve implantation: mechanisms and implications. *Cardiovasc. Diagn. Therapy* 3:15–22, 2013.
- ¹²²Steinberg, B. A., J. K. Harrison, C. Frazier-Mills, G. C. Hughes, and J. P. Piccini. Cardiac conduction system disease after transcatheter aortic valve replacement. *Am. Heart J.* 164:664–671, 2012.
- ¹²³Stock, U. A., I. Degenkolbe, T. Attmann, K. Schenke-Layland, S. Freitag, and G. Lutter. Prevention of device-related tissue damage during percutaneous deployment of tissue-engineered heart valves. *J. Thorac. Cardiovasc. Surg.* 131:1323–1330, 2006.
- ¹²⁴Stock, S., M. Scharfschwerdt, R. Meyer-Saraei, D. Richardt, E. I. Charitos, H.-H. Sievers, and T. Hanke. Does undersizing of transcatheter aortic valve bioprostheses during valve-in-valve implantation avoid coronary obstruction? An in vitro study. *Thorac. Cardiovasc. Surg.* 64:ePP43, 2016.
- ¹²⁵Sun, W., A. Abad, and M. Sacks. Simulated bioprosthetic heart valve deformation under quasi-static loading. *J. Biomech. Eng.* 127:905–914, 2005.
- ¹²⁶Sun, W., K. Li, and E. Sirois. Simulated elliptical bioprosthetic valve deformation: implications for asymmetric transcatheter valve deployment. *J. Biomech.* 43:3085–3090, 2010.
- ¹²⁷Sun, W., M. Sacks, G. Fulchiero, J. Lovekamp, N. Vyavahare, and M. Scott. Response of heterograft heart valve biomaterials to moderate cyclic loading. *J. Biomed. Mater. Res. Part A* 69A:658–669, 2004.
- ¹²⁸Tamburino, C., D. Capodanno, A. Ramondo, A. S. Petronio, F. Ettori, G. Santoro, S. Klugmann, F. Bedogni, F. Maisano, A. Marzocchi, A. Poli, D. Antoniucci, M. Napodano, M. De Carlo, C. Fiorina, and G. P. Ussia. Incidence and predictors of early and late mortality after transcatheter aortic valve implantation in 663 patients with severe aortic stenosis. *Circulation* 123:299–308, 2011.
- ¹²⁹Taramasso, M., A. Pozzoli, A. Latib, G. La Canna, A. Colombo, F. Maisano, and O. Alfieri. New devices for Tavi: technologies and initial clinical experiences. *Nat. Rev. Cardiol.* 11:157–167, 2014.
- ¹³⁰Thubrikar, M. J., J. D. Deck, J. Aouad, and S. P. Nolan. Role of mechanical stress in calcification of aortic bioprosthetic valves. *J. Thorac. Cardiovasc. Surg.* 86:115–125, 1983.
- ¹³¹Thyregod, H. G. H., D. A. Steinbrüchel, N. Ihlemann, T. A. Ngo, H. Nissen, B. J. Kjeldsen, Y. Chang, P. B. Hansen, P. S. Olsen, and L. Søndergaard. No clinical effect of prosthesis–patient mismatch after transcatheter versus surgical aortic valve replacement in intermediate- and low-risk patients with severe aortic valve stenosis at mid-term follow-up: an analysis of the notion trial. *Eur. J. Cardiothorac. Surg.* 2016. doi:10.1093/ejcts/ezw095.
- ¹³²Treede, H., F. W. Mohr, S. Baldus, A. Rastan, S. Ensminger, M. Arnold, J. Kempfert, and H. R. Figulla. Transapical transcatheter aortic valve implantation using the JenaValve system: acute and 30-day results of the multicentre ce-mark study. *Eur. J. Cardiothorac. Surg.* 41:e131–e138, 2012.
- ¹³³Tuzcu, E. M. Transcatheter aortic valve replacement malposition and embolization: innovation brings solutions also new challenges. *Catheter Cardiovasc. Interv.* 72:579–580, 2008.
- ¹³⁴Tuzcu, E. M., S. R. Kapadia, and L. G. Svensson. Valve in valve another milestone for transcatheter valve therapy. *Circulation* 126:2280–2282, 2012.
- ¹³⁵Van der Boon, R. M. A., N. M. Van Mieghem, D. A. Theuns, R.-J. Nuis, S. T. Nauta, P. W. Serruys, L. Jordaens, R. T. van Domburg, and P. P. T. de Jaegere. Pacemaker dependency after transcatheter aortic valve implantation with the self-expanding medtronic corevalve system. *Int. J. Cardiol.* 168:1269–1273, 2013.
- ¹³⁶Wang, Q., S. Kodali, C. Primiano, and W. Sun. Simulations of transcatheter aortic valve implantation: implications for aortic root rupture. *Biomech. Model. Mechanobiol.* 14:29–38, 2015.
- ¹³⁷Wang, Q., C. Primiano, R. McKay, S. Kodali, and W. Sun. Ct image-based engineering analysis of transcatheter aortic valve replacement. *JACC Cardiovasc. Imaging* 7:526–528, 2014.
- ¹³⁸Wang, Q., E. Sirois, and W. Sun. Patient-specific modeling of biomechanical interaction in transcatheter aortic valve deployment. *J. Biomech.* 45:1965–1971, 2012.
- ¹³⁹Wasowicz, M., M. Meineri, G. Djaiani, N. Mitsakakis, N. Hegazi, W. Xu, R. Katznelson, and J. M. Karski. Early complications and immediate postoperative outcomes of paravalvular leaks after valve replacement surgery. *J. Cardiothorac. Vasc. Anesth.* 25:610–614, 2011.
- ¹⁴⁰Webb, J. G., and D. Dvir. Transcatheter aortic valve replacement for bioprosthetic aortic valve failure the valve-in-valve procedure. *Circulation* 127:2542–2550, 2013.
- ¹⁴¹Webb, J. G., and D. A. Wood. Current status of transcatheter aortic valve replacement. *J. Am. Coll. Cardiol.* 60:483–492, 2012.
- ¹⁴²Webb, J. G., D. A. Wood, J. Ye, R. Gurvitch, J. B. Masson, J. Rodes-Cabau, M. Osten, E. Horlick, O. Wendler, E. Dumont, R. G. Carere, N. Wijesinghe, F. Nietlispach, M. Johnson, C. R. Thompson, R. Moss, J.

- Leipsic, B. Munt, S. V. Lichtenstein, and A. Cheung. Transcatheter valve-in-valve implantation for failed bioprosthetic heart valves. *Circulation* 121:1848–1857, 2010.
- ¹⁴³Weber, B., P. E. Dijkman, J. Scherman, B. Sanders, M. Y. Emmert, J. Grünenfelder, R. Verbeek, M. Bracher, M. Black, and T. Franz. Off-the-shelf human decellularized tissue-engineered heart valves in a non-human primate model. *Biomaterials* 34:7269–7280, 2013.
- ¹⁴⁴Wenaweser, P., L. Buellesfeld, U. Gerckens, and E. Grube. Percutaneous aortic valve replacement for severe aortic regurgitation in degenerated bioprosthesis: the first valve procedure using the corevalve revalving system. *Catheter Cardiovasc. Interv.* 70:760–764, 2007.
- ¹⁴⁵Willson, A. B., J. Rodes-Cabau, D. A. Wood, J. Leipsic, A. Cheung, S. Toggweiler, R. K. Binder, M. Freeman, R. DeLarochelliere, R. Moss, L. Nombela-Franco, E. Dumont, K. Szummer, G. P. Fontana, R. Makkar, and J. G. Webb. Transcatheter aortic valve replacement with the St. Jude medical portico valve: first-in-human experience. *J. Am. Coll. Cardiol.* 60:581–586, 2012.
- ¹⁴⁶Witkowski, A., J. Jastrzebski, M. Dabrowski, and Z. Chmielak. Second transcatheter aortic valve implantation for treatment of suboptimal function of previously implanted prosthesis: review of the literature. *J. Interv. Cardiol.* 27:300–307, 2014.
- ¹⁴⁷Wood, D. A., L. F. Tops, J. R. Mayo, S. Pasupati, M. J. Schalij, K. Humphries, M. Lee, A. Al Ali, B. Munt, R. Moss, C. R. Thompson, J. J. Bax, and J. G. Webb. Role of multislice computed tomography in transcatheter aortic valve replacement. *Am. J. Cardiol.* 103:1295–1301, 2009.
- ¹⁴⁸Wootton, D. M., and D. N. Ku. Fluid mechanics of vascular systems, diseases, and thrombosis. *Annu. Rev. Biomed. Eng.* 1:299–329, 1999.
- ¹⁴⁹Young, E., J. F. Chen, O. Dong, S. Q. Gao, A. Massiello, and K. Fukamachi. Transcatheter heart valve with variable geometric configuration. In vitro evaluation. *Artif. Organs* 35:1151–1159, 2011.
- ¹⁵⁰Zebhi, B., and Dasi, L. P. Biomechanical analysis of aortic valve calcification and post-procedural paravalvular leak. Colorado State University, 2016, p. 74.
- ¹⁵¹Zegdi, R., P. Bruneval, D. Blanchard, and J.-N. Fabiani. Evidence of leaflet injury during percutaneous aortic valve deployment. *Eur. J. Cardiothorac. Surg.* 40:257–260, 2011.
- ¹⁵²Zegdi, R., V. Ciobotaru, M. Noghin, G. Sleilaty, A. Lafont, C. Latrémouille, A. Deloche, and J.-N. Fabiani. Is it reasonable to treat all calcified stenotic aortic valves with a valved stent?: Results from a human anatomic study in adults. *J. Am. Coll. Cardiol.* 51:579–584, 2008.
- ¹⁵³Zenses, A. S., J. Mitchell, M. Evin, V. Stanova, J. F. Obadia, P. Pibarot, and R. Rieu. In vitro study of valve-in-valve performance with the corevalve self-expandable prosthesis implanted in different positions and sizes within the trileaflet surgical heart valve. *Comput. Methods Biomech. Biomed. Eng.* 18:2086–2087, 2015.