

UC San Diego

UC San Diego Previously Published Works

Title

Increased Expression of Membrane Type 3-Matrix Metalloproteinase in Human Atherosclerotic Plaque

Permalink

<https://escholarship.org/uc/item/34v561r9>

Journal

Circulation, 106(24)

ISSN

0009-7322

Authors

Uzui, Hiroyasu
Harpf, Alice
Liu, Ming
et al.

Publication Date

2002-12-10

DOI

10.1161/01.cir.0000041433.94868.12

Peer reviewed

Increased Expression of Membrane Type 3-Matrix Metalloproteinase in Human Atherosclerotic Plaque : Role of Activated Macrophages and Inflammatory Cytokines
Hiroyasu Uzui, Alice Harpf, Ming Liu, Terence M. Doherty, Arun Shukla, Ning-Ning Chai, Pinky V. Tripathi, Stefan Jovinge, Douglas J. Wilkin, Kamlesh Asotra, Prediman K. Shah and Tripathi B. Rajavashisth

Circulation. 2002;106:3024-3030; originally published online November 18, 2002;
doi: 10.1161/01.CIR.0000041433.94868.12

Circulation is published by the American Heart Association, 7272 Greenville Avenue, Dallas, TX 75231
Copyright © 2002 American Heart Association, Inc. All rights reserved.
Print ISSN: 0009-7322. Online ISSN: 1524-4539

The online version of this article, along with updated information and services, is located on the
World Wide Web at:

<http://circ.ahajournals.org/content/106/24/3024>

Permissions: Requests for permissions to reproduce figures, tables, or portions of articles originally published in *Circulation* can be obtained via RightsLink, a service of the Copyright Clearance Center, not the Editorial Office. Once the online version of the published article for which permission is being requested is located, click Request Permissions in the middle column of the Web page under Services. Further information about this process is available in the [Permissions and Rights Question and Answer](#) document.

Reprints: Information about reprints can be found online at:
<http://www.lww.com/reprints>

Subscriptions: Information about subscribing to *Circulation* is online at:
<http://circ.ahajournals.org/subscriptions/>

Increased Expression of Membrane Type 3–Matrix Metalloproteinase in Human Atherosclerotic Plaque

Role of Activated Macrophages and Inflammatory Cytokines

Hiroyasu Uzui, MD, PhD; Alice Harpf, MD; Ming Liu, MD; Terence M. Doherty, BA; Arun Shukla, MD; Ning-Ning Chai, MD; Pinky V. Tripathi, BS; Stefan Jovinge, MD, PhD; Douglas J. Wilkin, PhD; Kamlesh Asotra, PhD; Prediman K. Shah, MD; Tripathi B. Rajavashisth, PhD

Background—Matrix metalloproteinases (MMPs) are thought to play a prominent role in atherogenesis and destabilization of plaque. Pericellularly localized membrane-type (MT)–MMPs activate secreted MMPs. We investigated the hypothesis that MT3-MMP is expressed in human atherosclerotic plaques and is regulated by locally produced inflammatory cytokines and oxidized low-density lipoprotein (Ox-LDL).

Methods and Results—Expression and cellular localization of MT3-MMP in normal and atherosclerotic human coronary arteries were examined using specific antibodies. Abundant MT3-MMP expression was noted in medial smooth muscle cells (SMCs) of normal arteries. In atherosclerotic arteries, MT3-MMP expression was observed within complex plaques and colocalized with SMCs and macrophages (M ϕ). Cultured human monocyte-derived M ϕ constitutively expressed MT3-MMP mRNA and proteolytically active protein, as demonstrated by mRNA analyses, immunoblotting, and gelatin zymography, respectively. Ox-LDL, tumor necrosis factor- α , or macrophage colony-stimulating factor caused dose- and time-dependent increases in steady-state levels of MT3-MMP mRNA in cultured M ϕ . This correlated with a 2- to 4-fold increase in levels of MT3-MMP immunoreactive protein and enzymatic activity in M ϕ membranes. Confocal microscopy and flow cytometry confirmed induction and spatial distribution of MT3-MMP protein from intracellular domains to the M ϕ plasma membrane by Ox-LDL, tumor necrosis factor- α , or macrophage colony-stimulating factor.

Conclusions—MT3-MMP is expressed by SMCs and M ϕ in human atherosclerotic plaques. Proinflammatory molecules cause a progressive increase in the expression of MT3-MMP in cultured M ϕ . Our results suggest a mechanism by which inflammatory molecules could promote M ϕ -mediated degradation of extracellular matrix and thereby contribute to plaque destabilization. (*Circulation*. 2002;106:3024-3030.)

Key Words: metalloproteinases ■ inflammation ■ plaque

Atherogenesis involves two key events: migration of circulating monocytes and other inflammatory cells into the subendothelium and migration of smooth muscle cells (SMCs) from the media to the intima.¹ Eventually, plaque erosion and rupture may directly precipitate thrombosis and its frequently devastating sequelae.² All of these pathobiological processes share a common requirement, focal matrix degradation, which is predominantly accomplished by the proteolytic action of locally expressed and activated matrix metalloproteinases (MMPs).³

MMPs comprise a family of proteases that are capable of degrading virtually all components of the extracellular milieu. MMPs perform a variety of tasks necessary for normal homeostasis, including maintenance of the dynamic integrity of the extracellular structure within arteries, but a growing

body of evidence indicates that dysregulation of MMPs underlies pathobiological alterations associated with diverse diseases.³ Within the MMP family is a subfamily that is not diffusible because it contains a transmembrane domain or a glycosylphosphatidylinositol anchor that localizes it to the cell membrane. Six membrane-type (MT)–MMPs have been identified.³ For several reasons, MT–MMPs are of particular interest. First, MT–MMPs are not synthesized in zymogen form but are instead constitutively active in situ. Second, MT–MMPs may function in a “privileged” microenvironment, where they are relatively protected from inactivation by TIMPs and diffusible nonspecific protease inhibitors. Third, MT–MMPs catalytically activate soluble MMPs from their zymogen to active forms and thus not only exert control over MMP activation but, more importantly, are also capable of

Received July 23, 2002; revision received September 24, 2002; accepted September 24, 2002.

From the Atherosclerosis Research Center, Division of Cardiology, Department of Medicine, and the Burns and Allen Research Institute, Cedars-Sinai Medical Center and UCLA School of Medicine, Los Angeles, Calif.

Correspondence to: Tripathi B. Rajavashisth, PhD, Atherosclerosis Research Center, Davis Research Building, Room 1062, Division of Cardiology, Cedars-Sinai Medical Center, UCLA School of Medicine, 8700 Beverly Blvd, Los Angeles, CA 90048-1865. E-mail rajavashisth@cshs.org

© 2002 American Heart Association, Inc.

Circulation is available at <http://www.circulationaha.org>

DOI: 10.1161/01.CIR.0000041433.94868.12

initiating an amplified, cascade-like biological effect.³ This last feature in particular makes MT-MMPs attractive candidates for potential therapeutic targets.

A variety of extracellular stimuli, including cytokines, cell-cell, and cell-matrix interactions, can induce MMP expression.^{3,4} Of particular relevance to atherosclerotic pathology, increased expression and activity of MMPs have been noted in vulnerable plaque regions.⁵ Serum MMPs are elevated in patients with acute coronary syndromes but not in those with stable angina.⁶ In addition, studies have shown that polymorphisms in MMP promoters are linked to susceptibility to coronary artery disease.⁷ We have shown that oxidized low-density lipoprotein (Ox-LDL) but not native LDL increased MMP-9 and MT1-MMP mRNA and protein expression and decreased TIMP-1 expression in cultured macrophages (M ϕ).⁸⁻¹⁰ We have also reported that inflammatory cytokines increase expression and activity of MT1-MMP by cultured vascular endothelial cells,⁹ SMCs, and M ϕ .¹⁰ Additionally, we have demonstrated that MT1-MMP is expressed in human atherosclerotic plaques and colocalizes with SMCs and M ϕ .¹⁰

In this study, we sought to determine whether MT3-MMP,¹¹ another member of the MT-MMP family, is expressed in human atherosclerotic plaques. To understand the nature and regulation of the factors that promote expression of MT3-MMP, this study investigated whether inflammatory molecules regulate expression and function of MT3-MMP in cultured human M ϕ .

Methods

Tissues and Immunocytochemical Staining

Specimens of normal (n=5) and atherosclerotic human coronary arteries (n=20) were obtained at the time of autopsy and fixed in 10% formalin. Atherosclerotic lesions were defined according to the histological classification of atherosclerosis of the American Heart Association.¹² Plaques were categorized into predominantly fibrous (n=10) versus lipid and macrophage-rich atheromatous lesion (n=10) using previously published criteria of plaque vulnerability.^{2,12}

Serial sections (5 μ m thick) of paraffin-embedded arterial tissues were subjected to immunohistochemical staining for localization of MT3-MMP, MMP-2, SMCs, and M ϕ , essentially as described¹⁰ using a commercially available kit from Dako Co. Antibodies included MT3-MMP (Oncogene Research Products, San Diego, Calif) and MMP-2 (Chemicon International, Inc, Temecula, Calif) to localize MT3-MMP and MMP-2, α -actin and CD68 (Dako Co.) to identify SMC and M ϕ , and a mouse nonspecific IgG (Dako Co) as a negative control. Vascular SMCs were used as a positive control for MT3-MMP.¹³ Immunolocalization of SMC, M ϕ , and MT3-MMP in fibrous and atheromatous plaques was quantitatively analyzed using Image Pro (MediaCybernetics).

Isolation and Culture of Monocyte-Derived M ϕ

Human peripheral blood monocytes were isolated as described.^{8,14} Monocyte-derived M ϕ were cultured in RPMI 1640 (GIBCO-Invitrogen) containing 10% FCS (Hyclone Laboratories), 100 U/mL penicillin, 100 μ g/mL streptomycin, and 0.25 μ g/mL amphotericin B for 7 days and then starved in the culture medium without FCS but with 0.1% low endotoxin BSA (Sigma Chemical). Experiments were performed in the starvation medium with or without varying concentration of Ox-LDL (obtained from Dr Judith Berliner, UCLA, Los Angeles, Calif), tumor necrosis factor (TNF)- α (PeproTech, Inc), and macrophage colony-stimulating factor (M-CSF) (R&D Systems).

Amplification of Human MT3-MMP-Specific cDNA Sequence

Two primers (MT-3 upper, TGGATGAAGAAGCCCCGAT [nucleotides 283 to 301]; MT-3 lower, GATGGCAGTGGGGTCATTG [nucleotides 771 to 789]) were synthesized corresponding to the published cDNA sequence of human MT3-MMP.¹³ Reverse transcriptase-polymerase chain reaction (RT-PCR) was performed to amplify a 507-nucleotide-long cDNA sequence using total RNA prepared from SMCs and M ϕ . The identity of the amplified product as MT3-MMP was established by DNA sequencing.

Northern Blot Analyses

RNA blots containing total cellular RNA were hybridized with a [³²P]-labeled MT3-MMP-specific cDNA probe. Blots were washed, autoradiographed, and, after stripping, rehybridized with a β -actin cDNA probe as an internal control. Quantitative results of the assays were obtained by performing densitometry of autoradiograms.

Immunoblot Analysis

Extracts of partially purified plasma membrane fractions of M ϕ grown in absence or presence of Ox-LDL, TNF- α , or M-CSF were isolated as described.¹⁰ Immunoblots were prepared as described.⁸⁻¹⁰ Blots were probed with purified mouse monoclonal antibodies (10 μ g of IgG/mL) to human MT3-MMP, essentially as described.⁸⁻¹⁰

Gelatin Zymography

Equal amounts of extracts of plasma membrane fractions of M ϕ grown in absence or presence of Ox-LDL, TNF- α , or M-CSF were added to culture media harvested from human SMC containing pro-MMP-2 and assayed for gelatinolytic activity as described.¹⁰ Equal amounts of culture media obtained from M ϕ grown with or without Ox-LDL, TNF- α , or M-CSF were used for secreted MMP-2 and MMP-9 activity. Proteins were electrophoresed using discontinuous sodium dodecyl sulfate (SDS)-polyacrylamide gels containing gelatin and visualized as described.⁸⁻¹⁰

Immunofluorescent Localization of MT3-MMP and MMP-2

Human monocytes (10⁶/well) were seeded on poly-DL-lysine-coated glass cover slips in serum-containing media for 16 hours, and the nonadherent cells were removed. The adherent monocytes were cultured in serum-containing medium for 7 days and then treated in serum-free medium with M-CSF, TNF- α or Ox-LDL for 24 hours. Cells were washed with PBS, fixed in 4% paraformaldehyde, permeabilized with 0.05% Triton X-100, blocked with 5% normal goat serum, incubated with anti-MT3-MMP mAb (1:250 dilution) together with MMP-2 pAb (1: 500 dilution), washed with PBS, and incubated in PE-conjugated goat anti-mouse (1:500; Caltag Laboratories, Burlingame, Calif), Alexa 568-conjugated goat anti-rabbit (1:500; Molecular Probes, Eugene, Ore), and nuclear stain TOTO-3 (1:15,000; Molecular Probes). After wash, the cover slips were mounted in Immuno Fluore (ICN) and visualized using a Leica scanning confocal microscope (inverted) equipped with Argon (488 nm) and Krypton (568 nm) lasers. PE-stained MT3-MMP and Alexa 568 signal for MMP-2 were obtained by sequential scans. To establish possible colocalization of MT3-MMP (green channel) and MMP-2 (red channel), corresponding 2D sections from both channels were merged using Leica software, and viewed as maximum intensity projections as well as xz and yz projections of selected cellular regions.

Flow Cytometric Analysis

Human M ϕ cultured in the absence or presence of Ox-LDL, TNF- α , or M-CSF were stained with anti-MT3-MMP antibody (0.5 μ g diluted to a total volume of 50 μ L), followed by staining with PE-conjugated goat anti-mouse IgG as described.¹⁰ The cells were fixed with 1% paraformaldehyde and analyzed on a FACScan flow cytometer (Becton Dickinson).

Data Analysis

Intensities of experimental bands from RNA and protein blots were measured by computer-assisted densitometry. Results are expressed as mean \pm SEM. Statistical analyses were performed by Student's *t* test to determine the significance of change in the measurements. A significant difference was considered for $P\leq 0.05$.

Results

Localization of MT3-MMP in Normal and Atherosclerotic Human Arteries

Sections of normal human coronary arteries showed MT3-MMP immunoreactivity that colocalized with MMP-2 staining within the medial SMC (Figure 1A, a through c). Antibodies used to identify MT3-MMP and MMP-2 in these sections did not distinguish between active and inactive enzymes. Human atherosclerotic plaques contained MT3-MMP proteins in the media underlying fibrous and lipid-rich regions (Figure 1A, d through f). Mouse nonspecific IgG used in place of primary antibody showed no background or nonspecific staining in atherosclerotic plaque (Figure 1A, g). Immunoreactive MT3-MMP proteins were abundantly detectable in macrophages of the atheromatous plaques (Figure 1A, h through l). Quantitative image analyses showed that the levels of MT3-MMP antigen staining were significantly ($P<0.001$; $n=10$ /group) increased and colocalized with M ϕ in lipid-rich atheromatous ($27.7\pm 7\%$) compared with predominantly fibrous ($13.8\pm 6.9\%$) plaques (Figure 1B).

Inflammatory Molecules Increase the Levels of MT3-MMP mRNA in Cultured Human M ϕ

Expression of MT3-MMP mRNA was determined by Northern blotting of total RNA prepared from cultured M ϕ , as well as RT-PCR (Figures 2 and 3). An RT-PCR product of the expected size (507 bp) was identified (Figure 3). The DNA sequence of the amplified fragment revealed a complete identity to the human MT3-MMP cDNA sequence and showed homologies to other published MT-MMP cDNA sequences. RNA blotting indicated that cultured M ϕ express a major MT3-MMP mRNA species of 12 kb (Figure 2), a size similar to MT3-MMP mRNA observed in vascular SMCs.¹⁵ Exposure of cultured M ϕ to increasing concentrations of Ox-LDL, TNF- α , or M-CSF resulted in a dose- and time-dependent accumulation of MT3-MMP mRNA. These inductive effects were first apparent within 2 to 4 hours of treatment and peaked 3- to 5-fold above control by 6 hours (Figures 2 and 3).

Activated M ϕ Produce Increased Levels of MT3-MMP Protein

Immunoblots of plasma membrane extracts derived from M ϕ that had been stimulated for 24 hours with Ox-LDL, TNF- α , or M-CSF exhibited increased levels of MT3-MMP protein compared with unstimulated M ϕ (Figure 4A). The observed increases in MT3-MMP mRNA levels (Figure 2) correlated well with corresponding increments in MT3-MMP protein levels in M ϕ stimulated with Ox-LDL (1.7-fold), TNF- α (3.5-fold), and M-CSF (3.4-fold) for 24 hours (Figure 4B).

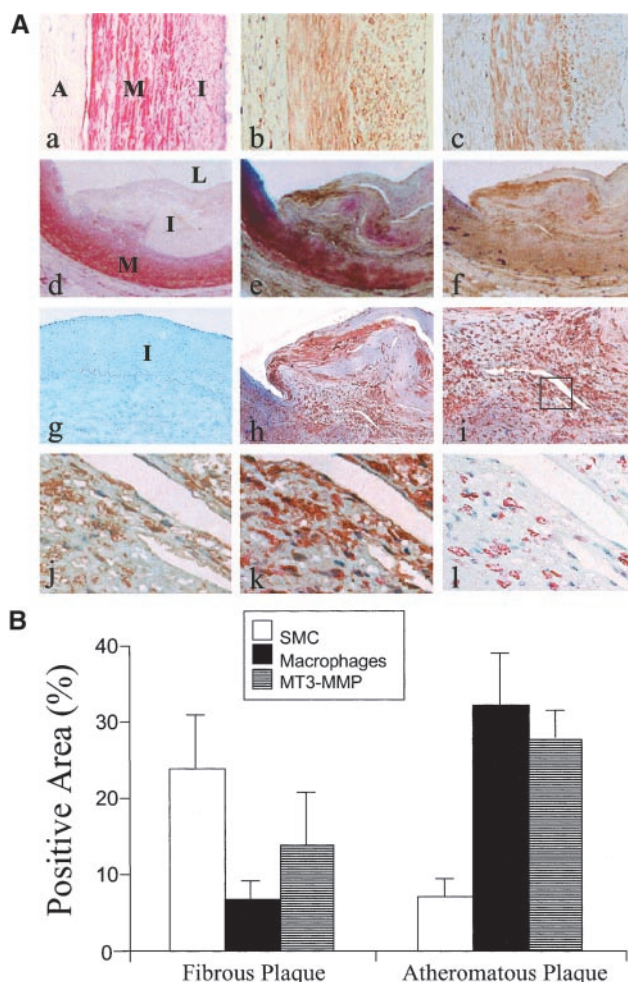


Figure 1. A, Expression of MT3-MMP in normal and atherosclerotic human coronary arteries. a, Normal coronary artery stained with α -actin exhibits SMCs in media and neointima. Magnification $\times 20$. b, Section of normal artery stained with MT3-MMP showing medial and intimal positivity. Magnification $\times 20$. c, Staining of normal artery section with MMP-2 antibody showing medial and intimal positivity. Magnification $\times 20$. d, Staining of atherosclerotic plaque section with α -actin in media. Magnification $\times 2$. e, Section of atherosclerotic plaque double-stained with MT3-MMP and α -actin antibody. Magnification $\times 2$. f, Section of atherosclerotic plaque stained with MT3-MMP antibody. Magnification $\times 2$. g, Section of plaque stained with control IgG. Magnification $\times 4$. h, Section of atherosclerotic plaque double-stained with MT3-MMP and macrophage-specific CD-68 antibody. Magnification $\times 4$. i, High-power view of a portion of panel h showing colocalization of MT3-MMP with M ϕ . Magnification $\times 20$. j, High-power view of the boxed region of panel i showing the expression of MT3-MMP. Magnification $\times 100$. k, High-power view of the boxed region of panel i showing the double immunostaining with MT3-MMP and CD68 antibody. Magnification $\times 100$. l, High-power view of the boxed region of panel i stained with CD68. Magnification $\times 100$. A indicates adventitia; M, medial; I, intima; and L, lumen. B, Increased levels of immunoreactive MT3-MMP antigen in fibrous versus M ϕ -rich atherosclerotic plaques. Histograms depicting quantitative computer-assisted morphometry of percent positive areas. Values represent mean \pm SEM ($n=10$ /group).

Activated M ϕ Exhibit Increased MT3-MMP Catalytic Activity

To determine whether increased levels of MT3-MMP protein corresponded with increased enzymatic activity, we per-

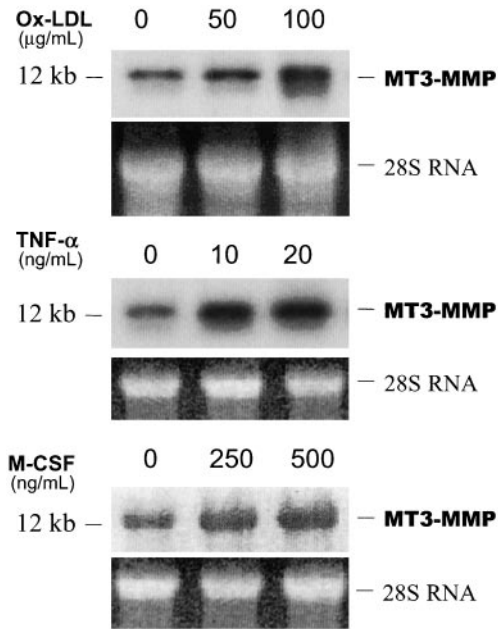


Figure 2. Northern analyses showing the induction of MT3-MMP mRNA in human Mφ in response to varying concentrations of inflammatory molecules. Human Mφ were treated with indicated amounts of Ox-LDL (6 hours), TNF-α (6 hours), or M-CSF (8 hours).

formed gelatin zymography on plasma membrane preparations of Mφ stimulated with Ox-LDL, TNF-α, or M-CSF. Incubation of medium conditioned by human SMCs that contained pro-MMP-2 with plasma membrane extracts from variously activated Mφ increased proteolytic conversion of 72-kDa pro-MMP-2 to new gelatinolytic bands of 70- and 68-kDa, corresponding to the processed, active MMP-2 (Figure 5A). We also examined conditioned medium obtained from cultured Mφ that were grown in presence or absence of Ox-LDL, TNF-α, or M-CSF for 24 hours for secreted MMP-2 and MMP-9 gelatinolytic activity. The level of secreted pro-MMP-9 was much greater compared with 72-

kDa pro-MMP-2 in Mφ-conditioned media. Treatment of Mφ with proinflammatory molecules tended to elevate both pro-MMP-9 and pro-MMP-2 gelatinolytic activity (Figure 5B).

M-CSF-Activated Mφ Show Cell Surface-Associated MT3-MMP Protein

Confocal microscopic analysis using fluoroprobes specific for MT3-MMP and MMP-2 revealed that Mφ seem to express increased levels of MT3-MMP and MMP-2 when cultured in the presence of Ox-LDL, TNF-α, or M-CSF (Figure 6). Optical sections (0.5 μm thick) from z-series of confocal images of dual-stained Mφ showed that MT3-MMP is localized both in the cytoplasm and on the plasma membrane of Mφ (Figure 6, MT3-MMP). MMP-2 protein exhibited a diffuse distribution in serum-starved controls (Figure 6, MMP-2, top). However, when treated with Ox-LDL, TNF-α, or M-CSF, redistribution of both MT3-MMP and MMP-2 protein to focal cytoplasmic or plasma membrane regions was observed. Furthermore, colocalization of MT3-MMP and MMP-2 in discrete areas was revealed in the merged images (Figure 6). Flow cytometric studies showed an ≈2.5-fold increase in the number of MT3-MMP-positive Mφ after 24 hours of treatment with as little as 100 ng/mL of M-CSF (Figure 7).

Discussion

We report here that MT3-MMP is expressed in human atherosclerotic plaque. Double immunostaining demonstrated that MT3-MMP colocalized with Mφ. Cell culture studies showed that Mφ express MT3-MMP mRNA and protein with enzymatic activity. To our knowledge, this is the first demonstration of MT3-MMP expression in Mφ. Inflammatory molecules (Ox-LDL, TNF-α, and M-CSF) significantly increased MT3-MMP expression in cultured human Mφ in a dose- and time-dependent manner. Confocal microscopy and flow cytometry confirmed induction and spatial redistribution of MT3-MMP protein and MMP-2 protein from intracellular domains to the Mφ plasma membrane by Ox-LDL, TNF-α,

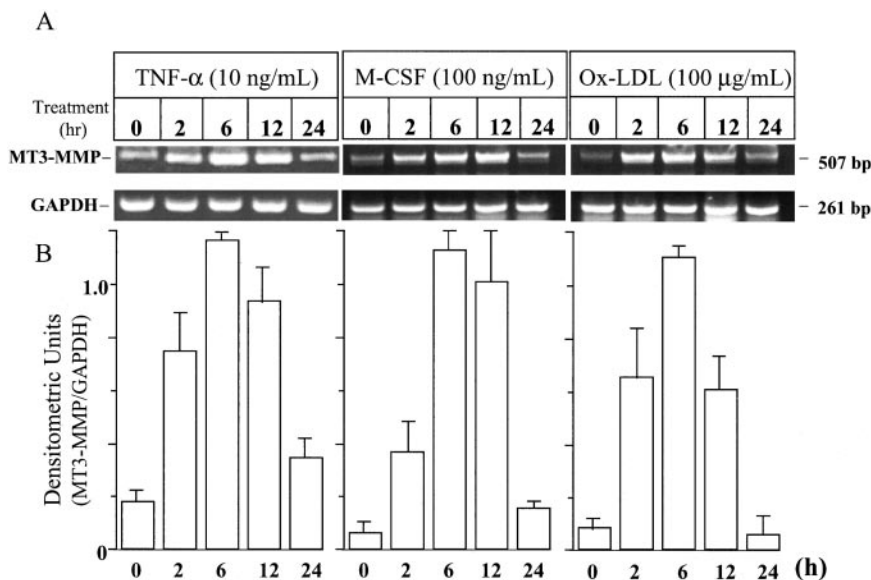


Figure 3. A, RT-PCR assays showing the time-dependent effects of TNF-α, M-CSF, and Ox-LDL on the induction of MT3-MMP mRNA. Amplification of GAPDH was used as a control. B, Quantitative results of MT3-MMP (obtained by densitometry) were normalized for the levels of GAPDH mRNA. Results represent the mean ± SEM of 3 separate assays.

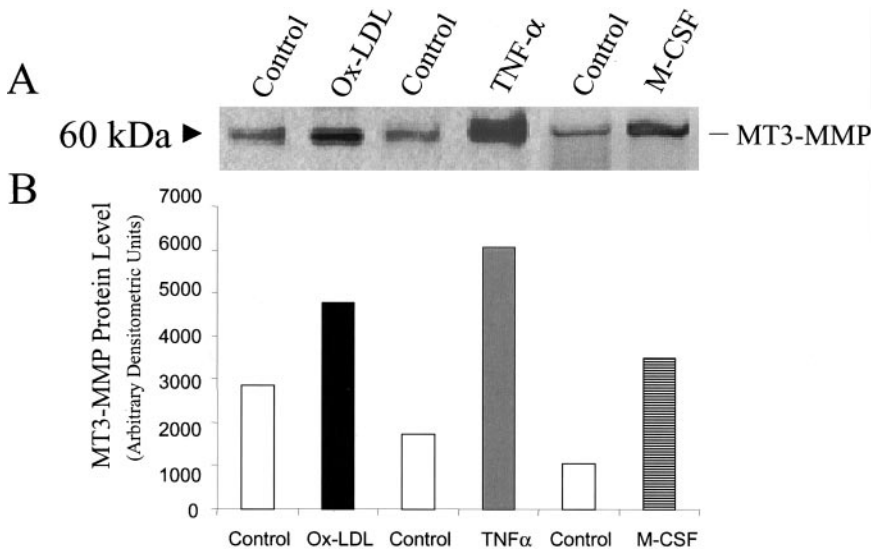


Figure 4. A, Immunoblotting of Mφ membrane extracts (50 μg) using MT3-MMP antibody from untreated cells (control) and cells treated with Ox-LDL (100 μg/mL), TNF-α (10 ng/mL), and M-CSF (250 ng/mL) for 24 hours. Blots are representative of 3 separate experiments. B, Histogram representing quantitative results obtained by densitometry of the MT3-MMP bands shown in panel A.

or M-CSF. Within the context of the known ability of MT3-MMP to activate arterial extracellular matrix (ECM) degradation via a proteolytic cascade, our results suggest that MT3-MMP may impact plaque development and structural stability. Because inflammatory molecules increased MT3-MMP in Mφ, our findings identify a mechanism by which inflammatory activation of Mφ might directly affect the formation, development, and complications of atherosclerosis. We did not directly observe collagenolytic activity *in vivo*; however, we found that pro-MMP-2 was converted to active MMP-2 by plasma membrane extracts prepared from Mφ treated with Ox-LDL, TNF-α, or M-CSF *in vitro*. Our studies are therefore consistent with the suggestion that

inflammatory molecules upregulate Mφ expression of MT3-MMP, which in turn might activate downstream matrix-degrading components such as MMP-2 and other MMP substrates of MT3-MMP and thereby contribute to structural weakening of the plaque.

Increased expression of MT3-MMP has been reported to occur in several pathological conditions involving tissue invasion or inflammation, including primary and metastatic tumor growth,^{3,16} infection,¹⁷ rheumatoid arthritis,^{3,18} and vascular SMCs after injury.¹⁹ Expression of MT3-MMP in SMCs increases after treatment with platelet-derived growth factor or fibronectin.¹⁹ Although our results suggest a general role for increased MT3-MMP expression in inflammation and

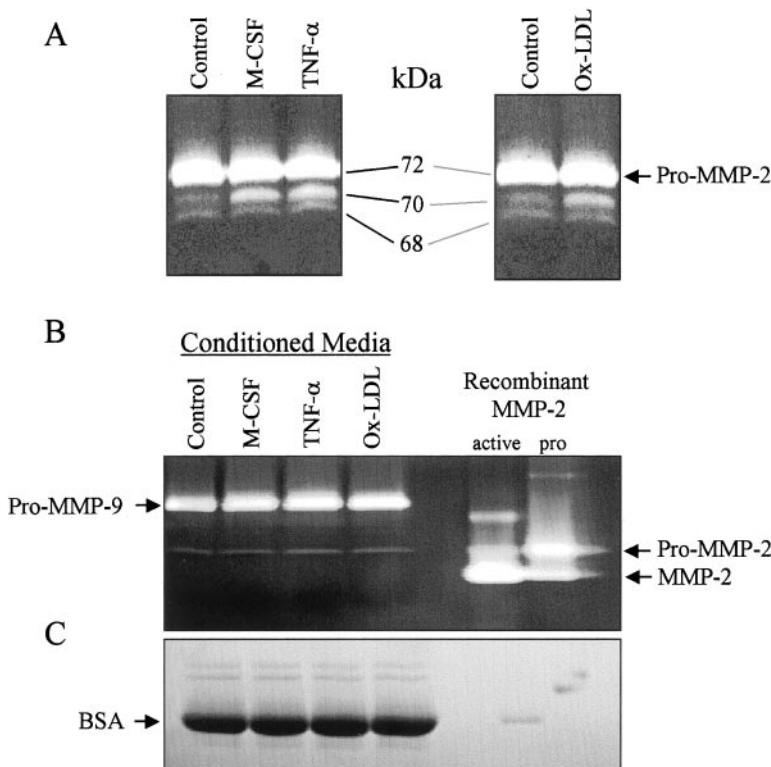


Figure 5. A, Increased proteolytic processing of 72-kDa pro-MMP-2 from media conditioned by unstimulated human SMCs by plasma membrane preparations of Mφ stimulated with Ox-LDL (100 μg/mL), TNF-α (10 ng/mL), and M-CSF (250 ng/mL) for 24 hours. Positions of molecular weight (MW) markers indicated in kDa. B, Gelatinolytic activity of MMP-2 and -9 in the culture medium conditioned by human Mφ grown in absence or presence of Ox-LDL (100 μg/mL), TNF-α (10 ng/mL), or M-CSF (250 ng/mL) for 24 hours. C, Control gel without gelatin after Coomassie blue staining. Comparable protein bands including BSA used in the extraction buffer ensured equal loading under different conditions.

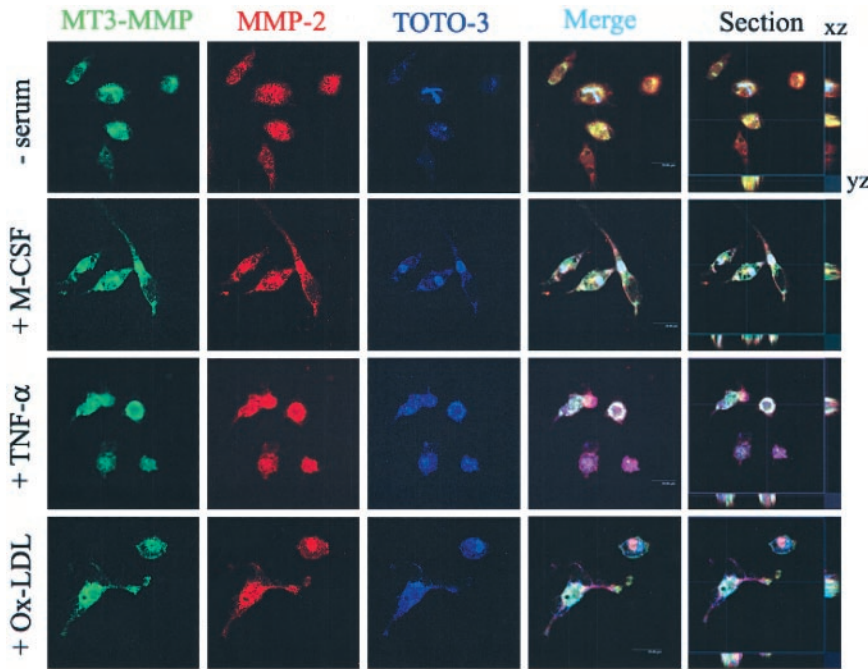


Figure 6. Confocal microscopy of serum-starved (-serum), M-CSF-treated, TNF- α -treated, or Ox-LDL-treated M ϕ . Optical sections from z-series corresponding to MT3-MMP (green), MMP-2 (red), and TOTO-3 stain for nuclei (blue) were visualized as maximal intensity projections. Signals from the green, red, and blue channels were merged in maximum intensity projections to visualize colocalization of MT3-MMP and MMP-2 (yellow to orange) due to induction and translocation from diffused distribution pattern in serum-starved controls (top) to discrete, cytoplasmic compartments or plasma membrane domains when treated with M-CSF (second panel from top), TNF- α (third panel from top), or Ox-LDL (bottom). Orthogonal slices with cutting planes indicated by the cross hair are displayed toward bottom (yz) or right side (xz) of each merged image (section) of untreated and treated cells shown in the extreme right column. Scale bar=5 μ m in length.

tissue invasion or destruction, the possibility that MT3-MMP induction is a result of these conditions rather than a cause cannot be excluded.

Our findings here support and extend previous studies showing that MT1-MMP is similarly expressed in human coronary artery plaques and is associated with M ϕ accumulation in the shoulder regions of plaque, and that its expression is augmented by inflammatory molecules.^{9,10} Taken together, these data are consistent with a growing body of evidence suggesting that dysregulation of ECM degradation and remodeling by proteases is a key feature of all phases of atherosclerosis and that M ϕ are an important source of these MMPs. Increased expression of several MMPs and MT-MMPs by M ϕ in plaque has been reported, and expression of

these seems to be restricted to specific plaque regions, particularly in shoulder regions of plaque and areas bordering acellular lipid cores.^{20–23} Whatever the specific activation mechanism, once activated by MT-MMPs, soluble MMPs can then degrade components of the matrix in plaque areas spatially remote from the site of their activation. Some of the MMPs activated by MT3-MMP can then in turn activate other distinct MMPs with different substrate specificities.^{3,24} Directly or indirectly then, MT3-MMP has the ability to degrade virtually all components of the arterial ECM. The capacity of MT3-MMP to initiate a signal that can be amplified in a matrix-degrading cascade may have far-reaching consequences for plaque development, composition, and stability.

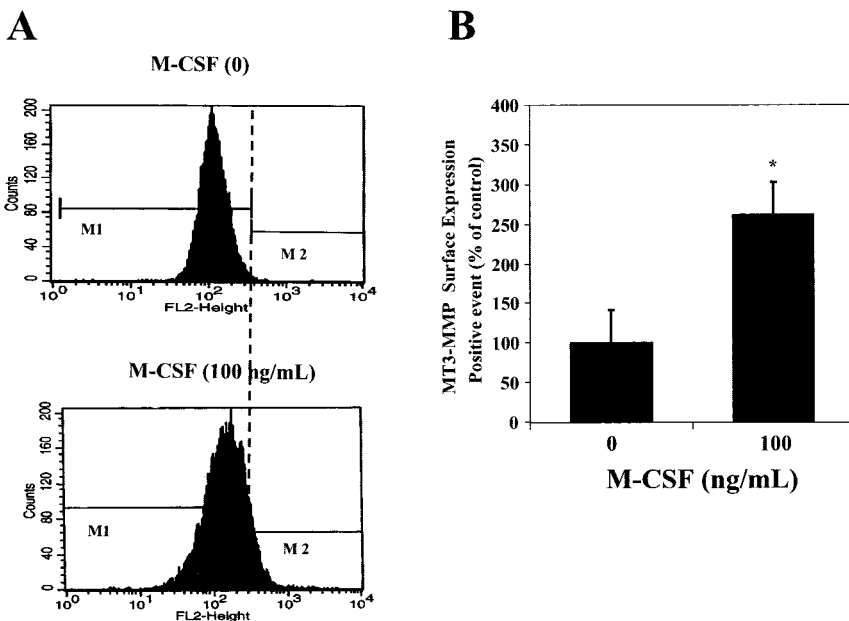


Figure 7. A, Flow cytometric analysis of human M ϕ with mAb to human MT3-MMP. In these experiments, control staining was done with an irrelevant PE-conjugated IgG1. All analyses were performed with FACScan using PE-conjugated goat anti-mouse IgG. Plots represent distribution of arbitrary fluorescence units (on abscissas, on a logarithmic scale) vs cell number (on ordinates). B, Histogram indicates the positive events of the cell population. The data were presented as a percentage without M-CSF treatment and represent the mean \pm SEM for 3 separate experiments performed in duplicate. * P <0.05 (versus M ϕ without M-CSF treatment).

The topographical relationships between M ϕ accumulation, augmented MMP and MT-MMP expression, and location of sites of predilection to cap erosion, tearing, or rupture have led to the notion that ECM degradation in the context of inflammation might be a general mechanism of plaque destabilization.²⁵ Our findings here and previously^{9,10} identify and implicate MT-MMPs as novel and important mediators of plaque structure and stability; based on these findings, it is likely that MT-MMPs will have significant therapeutic implications to stabilize atherosclerotic plaque and thus minimize clinical events resulting from plaque destabilization.

Acknowledgments

This work was supported by grants from the National Heart, Lung, and Blood Institute (HL51980 and HL58555 to Dr Rajavashisth). The authors thank the Mirisch Foundation, United Hostesses Charities, the Eisner Foundation, the Grand Foundation, Ornest Family Foundation, the Entertainment Industry Foundation, and the Heart Fund at Cedars-Sinai Medical Center, Los Angeles, Calif, for their generous support.

References

- Glass CK, Witztum JL. Atherosclerosis: the road ahead. *Cell*. 2001;104:503–516.
- Falk E, Shah PK, Fuster V. Coronary plaque disruption. *Circulation*. 1995;92:657–671.
- Doherty TM, Asotra K, Pei D, et al. Therapeutic developments in matrix metalloproteinase inhibition. *Expert Opinion Therapeutic Patents*. 2002;12:665–708.
- Fini ME, Cook JR, Mohan R, et al. Regulation of matrix metalloproteinase gene expression. In: Parks W, Mechem R, eds. *Matrix Metalloproteinases*. San Diego, Calif: Academic Press; 1998:300–356.
- Galis ZS, Sukhova GK, Lark MW, et al. Increased expression of matrix metalloproteinases and matrix degrading activity in vulnerable regions of human atherosclerotic plaques. *J Clin Invest*. 1994;94:2493–2503.
- Kai H, Ikeda H, Yasukawa H, et al. Peripheral blood levels of matrix metalloproteinases-2 and -9 are elevated in patients with acute coronary syndromes. *J Am Coll Cardiol*. 1998;32:368–372.
- Ye S. Polymorphism in matrix metalloproteinase gene promoters: implication in regulation of gene expression and susceptibility of various diseases. *Matrix Biol*. 2000;19:623–629.
- Xu X-P, Meisel SR, Ong JM, et al. Oxidized low-density lipoprotein regulates matrix metalloproteinase-9 and its tissue inhibitor in human monocyte-derived macrophages. *Circulation*. 1999;99:993–998.
- Rajavashisth TB, Liao JK, Galis ZS, et al. Inflammatory cytokines and oxidized low density lipoprotein increase endothelial cell expression of membrane type 1-matrix metalloproteinase. *J Biol Chem*. 1999;274:11924–11929.
- Rajavashisth TB, Xu X-P, Jovinge S, et al. Membrane type 1 matrix metalloproteinase expression in human atherosclerotic plaques: evidence for activation by proinflammatory mediators. *Circulation*. 1999;99:3103–3109.
- Puente XS, Pendas AM, Llano E, et al. Molecular cloning of a novel membrane-type matrix metalloproteinase from a human breast carcinoma. *Cancer Res*. 1996;56:944–949.
- Stary HC, Chandler AB, Dinsmore RE, et al. A definition of advanced types of atherosclerotic lesions and a histological classification of atherosclerosis: a report from the Committee on Vascular Lesions of the Council on Arteriosclerosis, American Heart Association. *Arterioscle Thromb Vasc Biol*. 1995;15:1512–1531.
- Shofuda K, Yasumitsu H, Nishihashi A, et al. Expression of three membrane-type matrix metalloproteinases in rat vascular smooth muscle cells and characterization of MT3-MMPs with and without transmembrane domain. *J Biol Chem*. 1997;272:9749–9754.
- Berliner JA, Territo MC, Sevastian A, et al. Minimally modified low density lipoprotein stimulates monocyte endothelial interactions. *J Clin Invest*. 1990;85:1260–1266.
- Galis ZS, Muszynski M, Sukhova GK, et al. Cytokine-stimulated human vascular smooth muscle cells synthesize a complement of enzymes required for extracellular matrix digestion. *Circ Res*. 1994;75:181–189.
- Kahari VM, Saarialho-Kere U. Matrix metalloproteinases and their inhibitors in tumour growth and invasion. *Ann Med*. 1999;31:34–45.
- Dong Z, Ghabrial M, Katar M, et al. Membrane-type matrix metalloproteinases in mice intracorneally infected with *Pseudomonas aeruginosa*. *Invest Ophthalmol Vis Sci*. 2000;41:4189–4194.
- Pap T, Shigeyama Y, Kuchen S, et al. Differential expression pattern of membrane-type matrix metalloproteinases in rheumatoid arthritis. *Arthritis Rheum*. 2000;43:1226–1232.
- Shofuda K, Nagashima Y, Kawahara K, et al. Elevated expression of membrane-type 1 and 3 matrix metalloproteinases in rat vascular smooth muscle cells activated by arterial injury. *Lab Invest*. 1998;78:915–923.
- Nikkari ST, O'Brien KD, Ferguson M, et al. Interstitial collagenase (MMP-1) expression in human carotid atherosclerosis. *Circulation*. 1995;92:1393–1398.
- Henny AM, Wakeley PR, Davies MJ, et al. Localization of stromelysin gene expression in atherosclerotic plaques by in situ hybridization. *Proc Natl Acad Sci U S A*. 1991;88:8154–8158.
- Schonbeck U, Mach F, Sukhova GK, et al. Expression of stromelysin-3 in atherosclerotic lesions: regulation via CD40-CD40 ligand signaling in vitro and in vivo. *J Exp Med*. 1999;189:843–853.
- Halpert I, Sires UI, Roby JD, et al. Matrilysin is expressed by lipid-laden macrophages at sites of potential rupture in atherosclerotic lesions and localizes to areas of versican deposition, a proteoglycan substrate for the enzyme. *Proc Natl Acad Sci U S A*. 1996;93:9748–9753.
- Whittaker M, Aycough A. Matrix metalloproteinases and their inhibitors: current status and future challenges. *Cell Transmissions*. 2001;17:3–12.
- Shah PK, Galis ZS. Matrix metalloproteinase hypothesis of plaque rupture: players keep piling up but questions remain. *Circulation*. 2001;104:1878–1880.