

UC Merced

UC Merced Previously Published Works

Title

Elevation-dependent intensification of fire danger in the western United States

Permalink

<https://escholarship.org/uc/item/35j9d80s>

Journal

Nature Communications, 14(1)

ISSN

2041-1723

Authors

Alizadeh, Mohammad Reza
Abatzoglou, John T
Adamowski, Jan
[et al.](#)

Publication Date

2023

DOI

10.1038/s41467-023-37311-4

Copyright Information

This work is made available under the terms of a Creative Commons Attribution License, available at <https://creativecommons.org/licenses/by/4.0/>

Peer reviewed

Elevation-dependent intensification of fire danger in the western United States

Received: 9 March 2022

Accepted: 13 March 2023

Published online: 30 March 2023

 Check for updates

Mohammad Reza Alizadeh ^{1,2,3}, John T. Abatzoglou ⁴, Jan Adamowski², Arash Modaresi Rad⁵, Amir AghaKouchak ^{6,7}, Francesco S. R. Pausata ³ & Mojtaba Sadegh ⁵ ✉

Studies have identified elevation-dependent warming trends, but investigations of such trends in fire danger are absent in the literature. Here, we demonstrate that while there have been widespread increases in fire danger across the mountainous western US from 1979 to 2020, trends were most acute at high-elevation regions above 3000 m. The greatest increase in the number of days conducive to large fires occurred at 2500–3000 m, adding 63 critical fire danger days between 1979 and 2020. This includes 22 critical fire danger days occurring outside the warm season (May–September). Furthermore, our findings indicate increased elevational synchronization of fire danger in western US mountains, which can facilitate increased geographic opportunities for ignitions and fire spread that further complicate fire management operations. We hypothesize that several physical mechanisms underpinned the observed trends, including elevationally disparate impacts of earlier snowmelt, intensified land-atmosphere feedbacks, irrigation, and aerosols, in addition to widespread warming/drying.

Mountains provide a variety of ecosystem services, including supplying about 50% of freshwater globally and an even higher fraction in mountainous arid regions (e.g., 70% of runoff in the western US)^{1,2}. Orographic temperature and precipitation gradients in montane areas facilitate stratified vegetation belts³, which promote local hotspots of biodiversity with a high degree of complexity that are particularly vulnerable to ecosystem changes in response to chronic (e.g., warming) and/or acute (e.g., wildfire) stressors⁴. Even small perturbations in these mountainous areas have large repercussions for hydrological and ecological processes, with cascading effects on downstream human-environmental systems^{3,5–7}.

A growing body of literature points to elevation-dependent trends in meteorological and land surface characteristics in montane regions of the world in response to the underlying warming signal^{6–8}. In particular, more rapid warming of surface air temperature has been

documented at higher elevations compared to that of lower elevations in many regions globally^{7,9}. Similarly, trends in land surface temperature¹⁰, reference evapotranspiration¹¹, snow cover and snow water equivalent^{12,13}, and vegetation greening^{14,15} have also been documented to vary across elevational gradients. Furthermore, elevation-dependent precipitation trends are observed in some regions, although the sign of such changes and associated mechanisms vary across studies^{2,16}.

Changes in the energy and water balance alter the fire danger level¹⁷, which is defined as the potential for a fire to ignite, spread and require suppression action. The literature has shown widespread increases in fire danger in many regions globally^{18–21}, but how fire danger trends change across the elevational gradient has not been studied. Recent literature shows that atmospheric warming weakened the high-elevation flammability barrier and enabled the upslope

¹Department of Civil and Environmental Engineering, Massachusetts Institute of Technology, Cambridge, MA, USA. ²Department of Bioresource Engineering, McGill University, Montreal, QC, Canada. ³Department of Earth and Atmospheric Science, University of Quebec in Montreal, Montreal, QC, Canada. ⁴Management of Complex Systems Department, University of California, Merced, Merced, CA, USA. ⁵Department of Civil Engineering, Boise State University, Boise, ID, USA. ⁶Department of Civil and Environmental Engineering, University of California, Irvine, CA, USA. ⁷Department of Earth System Sciences, University of California, Irvine, CA, USA. ✉e-mail: mojtabasadegh@boisestate.edu

advance of fires²², and facilitated high-elevation fires that are unprecedented in modern history²³. Here we use the fire danger representation in the US National Fire Danger Rating System (NFDRS)²⁴ to investigate trends in fire danger across elevations. We note that NFDRS fire danger indices were empirically derived based on mathematical models of fire behavior, and they do not fully capture the energy and water balance related to fuels and fire²⁴. Previous studies have linked these indices with regional burned area²⁵ and the growth of individual fires²⁶, and they are operationally used by fire management agencies across the US²⁷.

We evaluated elevation-dependent trends in fire danger indices between 1979 and 2020 across 15 level III Omernik ecoregions of the western US²⁸ that are mountainous. We augmented this list with a variety of meteorological variables that are commonly used in fire studies^{29,30} and posed two questions: (1) Are there elevation-dependent trends in fire danger indices across montane regions of the western US? (2) If so, do they culminate in the elevational synchronization of fire danger? We answered these questions using the gridMET dataset of daily meteorological and NFDRS variables (~4 km grid)³¹, Omernik level III ecoregions map from the US Environmental Protection Agency²⁸, and the National Elevation Dataset (10 m resolution) from the US Geological Survey. We present the results of the energy release component (ERC, Fuel Model G in NFDRS 77²⁴) in the main paper and all other NFDRS indices (burning index [BI], 100-h and 1000-h dead fuel moisture—FM100 and FM1000, respectively) and meteorological variables (vapor pressure deficit [VPD], temperature, relative and specific humidity, and reference evapotranspiration) in the Supplementary Information. ERC indicates the available energy per unit area at the flame front, measuring the dryness of dead and live fuels. ERC is less directly influenced by temperature than other fire danger indices. It is, however, strongly influenced by relative humidity—which is in turn related to temperature—and precipitation. Here, we select a fuel-agnostic measure across western landscapes through a single fuel model (model G) not to conflate heterogeneity in vegetation distribution with heterogeneity in climate trends. We, however, show that general conclusions hold for other fire danger indices that are not dependent on the fuel model.

Results

Elevation-dependent trends in warm-season ERC

All fire danger indices, as well as meteorological variables, showed marked drying/warming trends over the period of 1979–2020 in all 15 mountainous ecoregions of the western US and across all elevation bands (Fig. 1, Supplementary Figs. S1–S8). Temporal trends in warm-season-average (hereafter warm-season; May–September) fire danger indices were computed over 500 m elevation bands in each ecoregion using least squares linear regression (e.g., Fig. 1a), and linear slope of trends was calculated across elevation bands (e.g., Fig. 1b). The former indicates temporal trends in fire danger indices in each band, whereas the latter points out whether or not trends are magnified at higher elevations compared to the lower land.

Warm-season ERC trends were most pronounced at higher elevations and least pronounced at lower elevations (Fig. 1a). Median ERC among all ecoregions increased by nearly 15 units during 1979–2020 in the highest elevation band (>3000 m). By contrast, median ERC across all ecoregions increased by only ~6 units—smallest across all elevation bands—during 1979–2020 in the lowest elevation band (0–500 m) (Fig. 1a). Among individual ecoregions and elevation bands, the largest increase in ERC (17 units) from 1979 to 2020 was observed at >3000 m in Central Basin and Range, whereas the smallest increase in ERC (1 unit) was observed in the 0–500 m elevation band of the maritime affected North Cascades (Fig. 1a).

Positive elevation-dependent ERC trends (i.e., larger increases in ERC with elevation gain) were found in 13 of the 15 studied ecoregions (Fig. 1b). This trend is even more pronounced for dead fuel moisture (FM100 and FM1000), with all ecoregions showing more marked drying trends in higher elevations (Supplementary Figs. S3, S4). Positive elevational ERC slopes range between 1 and 3 units/km in the 42 years of study (Fig. 1b). For Central Basin and Range, for example, the highest elevations (>3000 m) had an additional 6.4 units of increase in ERC compared to lower elevations (1000–1500 m) from 1979 to 2020. Accelerated increases in fire danger at higher elevations imply synchronization of fire danger across elevations, posing marked fire management challenges^{22,32–34}.

Warm-season average ERC in the most recent decade (2011–2020) was larger than that of the earliest decade (1981–1990) in all ecoregions

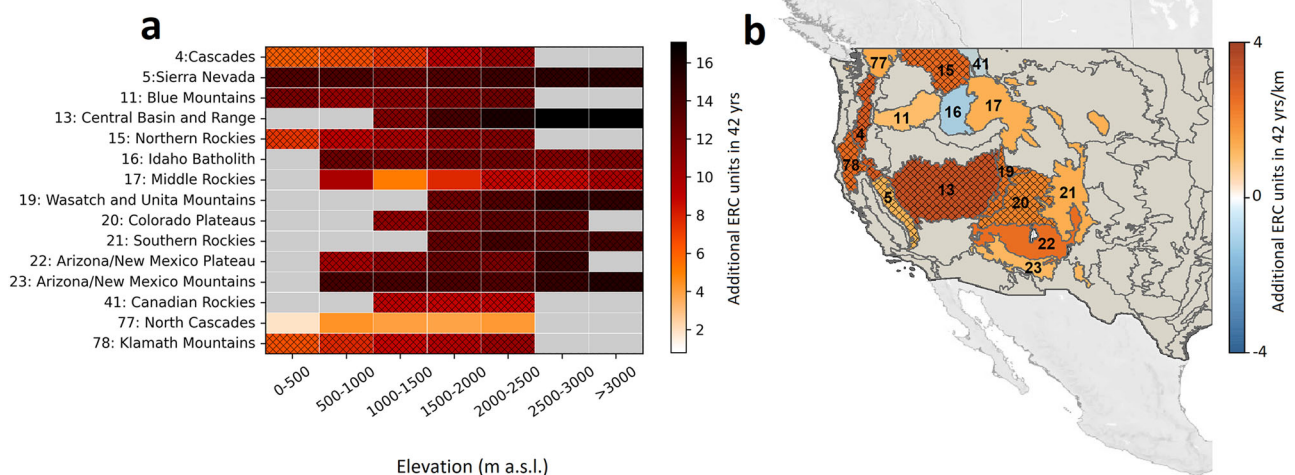


Fig. 1 | Elevation-dependent trends in fire danger across montane ecoregions in the western US. a Temporal trends in warm-season (May–September) average energy release component (ERC) from 1979 to 2020 in each elevation band in each mountainous ecoregion of the western US. Elevation bands with less than 250 km² of land are removed from the analysis and are shown with gray shading. **b** Slope of ERC temporal trends across elevation bands, where positive values indicate a larger

intensification of ERC at higher elevations. (© OpenStreetMap contributors 2017. Distributed under the Open Data Commons Open Database License (ODbL) v1.0.)⁵⁷. Gray shading shows non-mountainous ecoregions that are not studied here. Hatched areas indicate statistically significant trends at the 95% confidence level. “m a.s.l.” stands for meter above sea level, and “yrs/km” stand for years per kilometer of elevation.

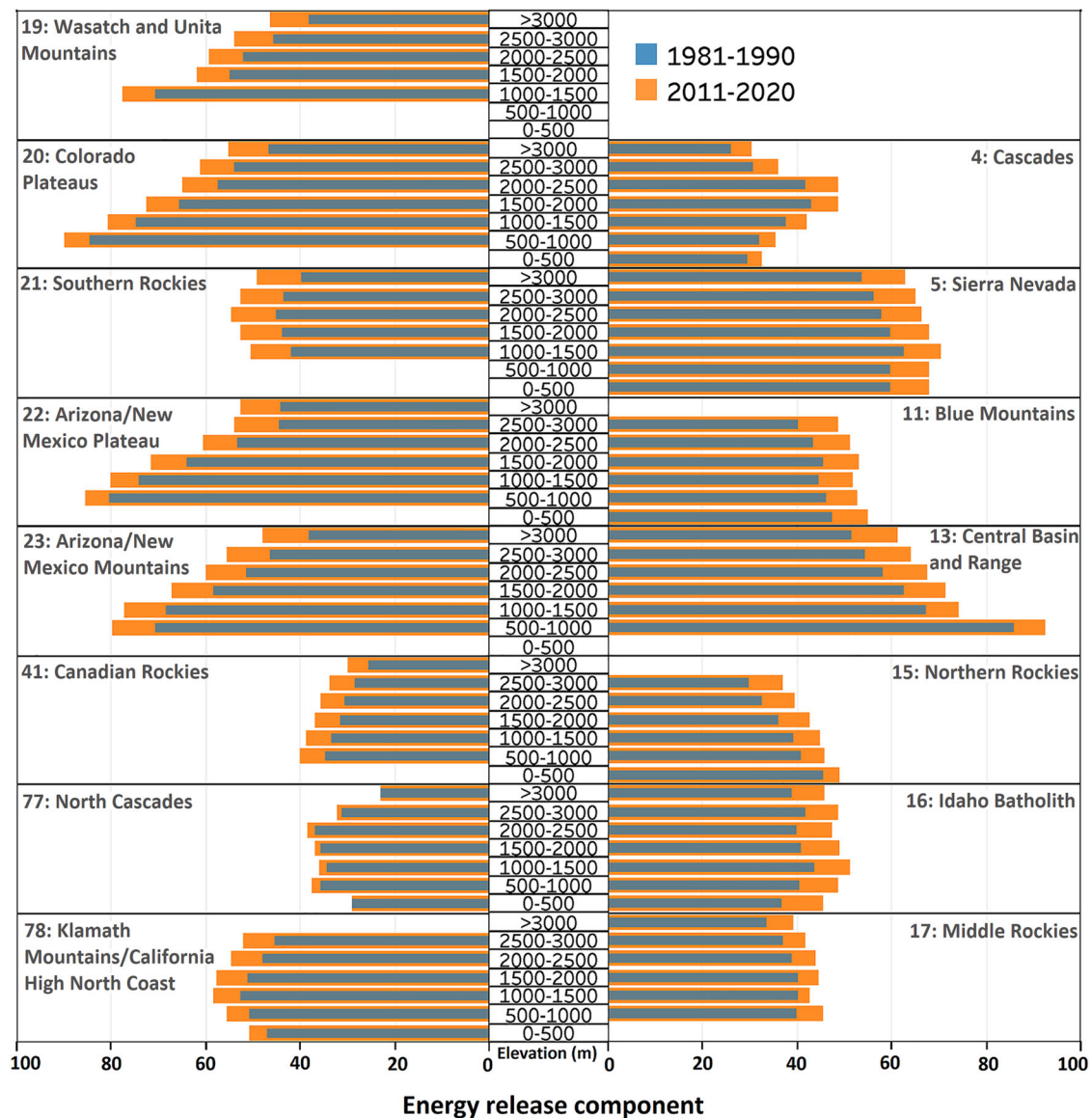


Fig. 2 | Decadal average warm-season energy release component (ERC) in each elevation band in each ecoregion. Results for 1981–1990 and 2011–2020 are shown in blue and orange colors, respectively. “m” stands for meter.

and across all elevation bands (Fig. 2). Similar drying/warming behavior was observed when viewed through the lens of other fire danger indices and meteorological variables (Supplementary Figs. S9–S17). The largest median relative increase in warm-season ERC (19%) during 2011–2020 vs. 1981–1990 across all ecoregions was observed in the highest elevations (>3000 m), and the smallest relative increase (10%) was observed in the lowest elevations (0–500 m). Furthermore, a range of different patterns are observed in warm-season ERC values across different elevation bands within and between ecoregions (Fig. 2). Some ecoregions (e.g., Sierra Nevada) were associated with a comparable range of warm-season ERC values across elevation bands, whereas others (e.g., Central Basin and Range) showed widely different values across the elevational gradient (Fig. 2). In general, the elevational gradient of warm-season ERC climatology is more pronounced in drier/warmer ecoregions (Fig. 2). Southern ecoregions (e.g., New Mexico Plateau/Mountains) were expectedly associated with a higher warm-season ERC range compared to northern ecoregions (e.g., Canadian Rockies), which follow latitudinal temperature gradients (Fig. 2).

Warm-season average temperature generally decreases monotonically with elevation gain, but elevational relationships of fire

danger indices are non-monotonic (Fig. 3). Fire danger indices depend on the energy balance driven by moisture availability, evaporative demand, and temperature (as well as wind for BI) and are hence not merely a simple function of temperature. Responses of ERC, BI, and VPD, as well as FM100, FM1000 range from (1) monotonically decreasing (increasing for FM100 and FM1000) with elevation (Fig. 3a; Arizona/New Mexico Mountains) to (2) increasing (decreasing for FM100 and FM1000) in response to elevation gain (Fig. 3b; Cascades), and (3) increasing (decreasing for FM100 and FM1000) to a certain elevation band and a reversed trend afterward (Fig. 3c; Sierra Nevada). We hypothesize that lower temperature and higher moisture availability in higher elevations in Arizona/New Mexico mountains lead to the monotonic decline in fire danger with elevation (Fig. 3a). By contrast, the lower elevation western slope of the Cascades is impacted by maritime air mass leading to reduced fire danger indices compared to higher elevations (Fig. 3b). In Sierra Nevada, lower elevations are adjacent to California’s Central Valley that is heavily irrigated and promotes elevated humidity in the boundary layer that moderates ERC³⁵, whereas lower humidity in mid-elevations (1000–2000 m) on the western slope of the region fosters the most intense fire danger

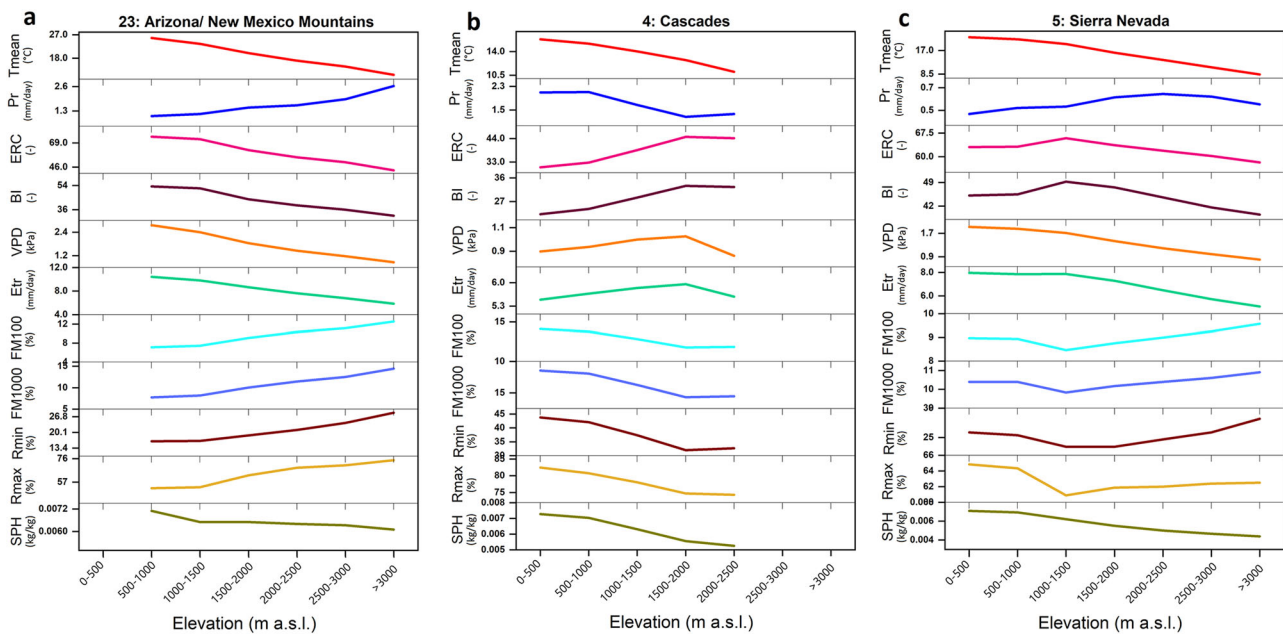


Fig. 3 | Elevational changes in the climatology of meteorological variables and fire danger indices. Average warm-season values of mean daily temperature (Tmean), precipitation (Pr), energy release component (ERC), burning index (BI), vapor pressure deficit (VPD), daily reference evapotranspiration (based on alfalfa; Etr), 100-h and 1000-h dead fuel moisture (FM100 and FM1000, respectively),

minimum and maximum daily relative humidity (Rmin and Rmax, respectively), and specific humidity (SPH) from 1979 to 2020 in each elevation band are presented for **a** Arizona/New Mexico Mountains, **b** Cascades, and **c** Sierra Nevada. “m a.s.l.” stands for meter above sea level, “mm” stands for millimeter, “kg” stands for kilograms, and “kPa” stands for kilopascal.

indices while decreased temperature and increased moisture (e.g., due to orographic increase in precipitation and snow cover) promote reduced fire danger indices at higher elevations (>2000 m). Other ecoregions are shown in Supplementary Figs. S18–S29.

Elevation-dependent increase in critical fire danger days

We now turn our attention to critical fire danger days, which are associated with high fire activity and potential for fire growth. We considered a threshold of ERC = 60 as the tipping point for increased fire activity across all studied ecoregions, following Brown et al.³⁶ that showed a majority of large forest fires (>400 ha) in the western US started on days with ERC \geq 60. Our analysis of fire records in the Fire Occurrence Database³⁷ confirmed this reporting and showed that 77 and 83% of large (>400 ha) and very large (4000 ha) fires from 1992 to 2020 in the studied ecoregions were associated with ERC \geq 60 on their discovery date. These statistics also hold for the entire western US. The constant threshold of ERC = 60 is selected here to warrant consistency and inter-comparability across ecoregions.

We found an increase in critical fire danger days during 1979–2020 in all elevation bands and all ecoregions (Fig. 4a). The highest median increase in critical fire danger days in all ecoregions during the 42 years of this study occurred between 2500 and 3000 m with an overall increase of 63 days, of which 22 days occurred outside of the warm season (Supplementary Tables S1–S3). By contrast, the lowest median increase in critical fire danger days across all ecoregions occurred in the 0–500 m elevation band, adding >22 extra fire danger days in 42 years (Supplementary Tables S1–S3; Fig. 4a). Higher elevations in 10 of the 15 studied montane ecoregions were associated with a larger rate of increase in critical fire danger days compared to lower elevations (Fig. 4b). The highest slope of trend in critical fire danger days as a function of elevation was observed in the Central Basin and Range, indicating an additional >28 fire danger days in 42 years per 1 km of elevation gain (Fig. 4b).

Trends in critical fire danger days viewed through the lens of other fire danger indices follow a similar pattern as that of ERC (Supplementary Figs. S30–S32).

The largest median rate of the relative increase in annual critical fire danger days (119%), based on ERC, across all ecoregions during 2011–2020 as compared to 1981–1990 was observed at >3000 m, and the lowest relative increasing rates were observed at <1500 m ranging between 38 and 43% (Fig. 5). Results based on other fire danger indices follow a similar pattern (Supplementary Figs. S33–S35). Furthermore, critical fire danger days synchronized across all elevation bands in the most recent decade in many ecoregions, such as Central Basin and Range and Sierra Nevada, indicating lessened topographical fire danger relief in a warming climate (Fig. 5). However, the decrease of critical fire danger days with elevation gain, due to the lower baseline ERC at higher elevations (Fig. 2), is noted in multiple ecoregions, such as Wasatch and Unita Mountains (Fig. 5). Finally, the number of critical fire danger days across ecoregions follow the latitudinal temperature gradient with the highest occurring in the southern region and the lowest in the northern region (Fig. 5). This is expected given baseline ERC values are higher in the southern ecoregions and our adopted fire danger threshold (ERC = 60) is constant across all studied ecoregions.

Finally, to augment this analysis, we also used the 75th and the 95th percentiles of daily ERC records from 1979 to 2020 in each grid pooled over the entire calendar year as the threshold for high and extreme fire danger conditions (Supplementary Fig. S36). We then estimated the number of high and extreme fire danger days in each grid and averaged them in each elevation band, and replicated our trend analysis. Results (Supplementary Figs. S37–S40) confirmed the findings of the constant threshold-based analysis (ERC = 60), although nuanced differences exist between the two approaches—especially between those of the constant and the 95th percentile-based thresholds. Furthermore, we conducted this percentile-based threshold analysis for other variables (Supplementary Figs. S41–S52) with similar conclusions.

Discussion

Here we documented larger fire danger trends at high elevations compared to low elevations across mountainous ecoregions in the western US over the past four decades. Our results pointed to the synchronization of fire danger across elevations in many ecoregions

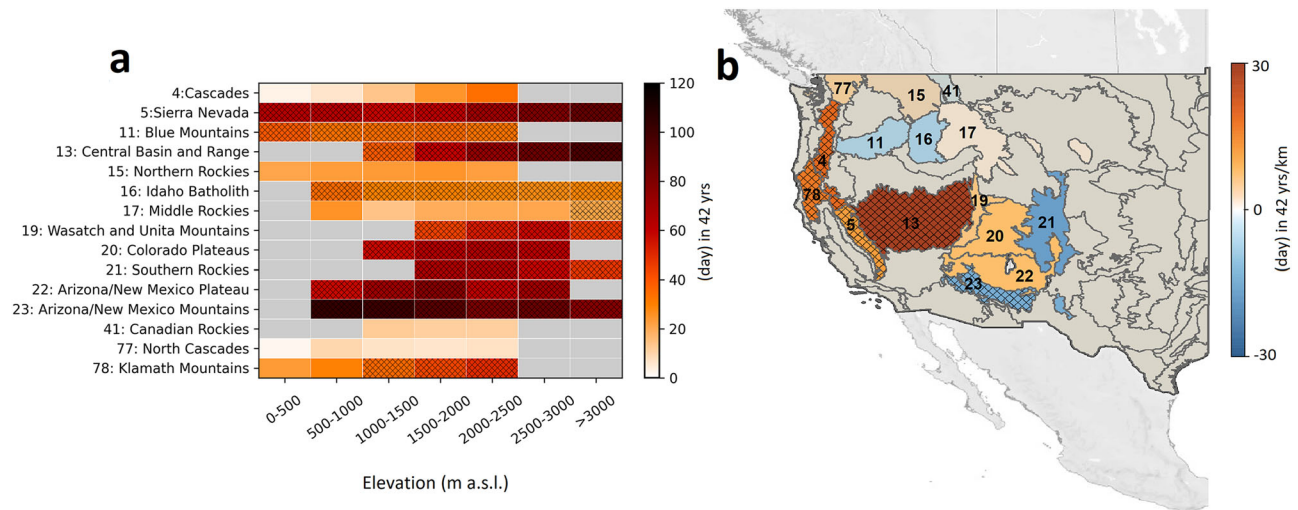


Fig. 4 | Elevation-dependent increase in critical fire danger days. a Temporal trends in critical fire danger days from 1979 to 2020 in each elevation band and ecoregion. **b** Slope of temporal trends in critical fire danger days across elevation bands. (© OpenStreetMap contributors 2017. Distributed under the Open Data

Commons Open Database License (ODbL) v1.0.⁵⁷. Hatched areas indicate statistically significant trends at the 95% confidence level. “m a.s.l.” stands for meter above sea level, and “yrs/km” stand for years per kilometer of elevation.

and indicated the reduction and disappearance of topographical fire danger relief in a warming climate. Elevation-dependent fire danger intensification implies that higher elevations that were historically wet enough to buffer fire ignition and slow/hinder fire propagation have become conducive to large fire activity in recent decades²². This trend is expected to intensify further, given the projected warming and drying trends in the western US³⁸. Elevational synchronization of fire danger along with the documented spatial synchronization of fire danger across the western US forests¹⁹ implies further strains on the limited fire suppression and management resources. We also documented concerning trends in critical fire danger days, especially at higher elevations. Our results showed that a marked portion of this increase in critical fire danger days occurred outside of the warm season, particularly in the southern ecoregions with a higher ERC climatology baseline.

We recognize that ground observations of meteorological variables are rare at high elevations, which might induce uncertainty in the reported trends based on a gridded product (gridMET³¹). Our analysis of fire danger trends across the elevation gradient using ground observations, however, confirmed the reported findings (Supplementary Fig. S53), although for a limited number of ecoregions (five) and stations (a total of 79) constrained by data availability. We also note that elevation-dependent warming has been widely demonstrated across the globe, including in the mountains of the western US (Pepin et al.^{6,7} and references therein); and this trend on the backbone of widespread drying in the fire season³⁹ is expected to induce elevation-dependent fire danger intensification. Furthermore, Alizadeh et al.²² showed that normalized burned area in the high-elevation forests of the western US increased at a higher rate than its low-elevation counterpart from 1984 to 2019, pointing to a weakened flammability barrier in the high elevations, providing secondary evidence for the herein reported trends.

We hypothesize that several mechanisms contribute to the elevation-dependent trends in fire danger. Earlier snowmelt and shrinking of snow cover decrease albedo at high elevations that historically stored large snow packs. This contributes to surface warming as a result of increased absorption of incoming solar energy⁷. While earlier snowmelt may not have directly been the main contributor to the largest intensification rates of fire danger at higher elevations, especially in the warm season, the indirect impact of earlier snowmelt can contribute to soil desiccation and land-atmosphere feedbacks strengthening that intensify fire danger^{40,41}. Land-atmosphere

feedbacks have always been a driving factor in water-limited low-elevation regions but have historically been less ubiquitous in energy-limited, moist highlands that have observed the largest soil moisture decline rates in recent decades in response to warming³⁸. The warming and drying cycle, due to land-atmosphere feedback, is further intensified by inhibiting cloud formation and its associated energy balance effects, as well as increasing the boundary layer depth that traps heat in the atmosphere⁴⁰. Similarly, warming and drying lead to higher cloud base heights, reducing the total precipitation that reaches the ground⁴².

Aerosols also play a role in the observed trends, as valleys of the western US trap fire smoke, dust, and anthropogenic particles and change long- and short-wave radiative balance^{7,43}. Higher concentrations of aerosols in the valleys buffer the direct impact of the incoming shortwave radiation on the surface weather⁴⁴. This enables the surface air temperature to be cooler than its potential⁴⁵. The aerosol impact is lower at high elevations⁴⁶. Another significant contributor to the smaller intensification of fire drivers in the lowest elevation bands in some ecoregions is the impact of agricultural irrigation on regulating valley temperatures³⁵.

Elevation-dependent intensification of fire danger has important implications for future ecological and hydrological characteristics of montane ecosystems³⁴. High-elevation mesic forests are associated with long return interval (several decades to millennia), high-intensity, stand-replacing fires, and their frequent occurrence may alter the population, community, composition, and structure of these forests^{47–49}. Fire impacts compounded by a warming climate also threaten high-elevation plant species by facilitating pathways for low-elevation species, including invasive annual grasses, to move to upper ground⁵⁰. Increasing high-elevation fire activity also has significant implications for: (1) water availability through removing vegetation cover and impacting snow accumulation and melt^{34,50}, (2) water quality, through introducing various pollutants and facilitating a magnified increase of stream temperature^{7,51}, and (3) landscape morphology, through enhanced erosion rates and stream incision⁵². In-depth understanding of elevation-dependent trends in fire danger is specifically important as fire suppression efforts are least effective in high-elevation, mesic forests, which when burned can significantly impact the vulnerable highlands’ flora and fauna, and can have adverse effects that cascade to lower elevations that depend on high-elevation emanated ecosystem services⁵³.

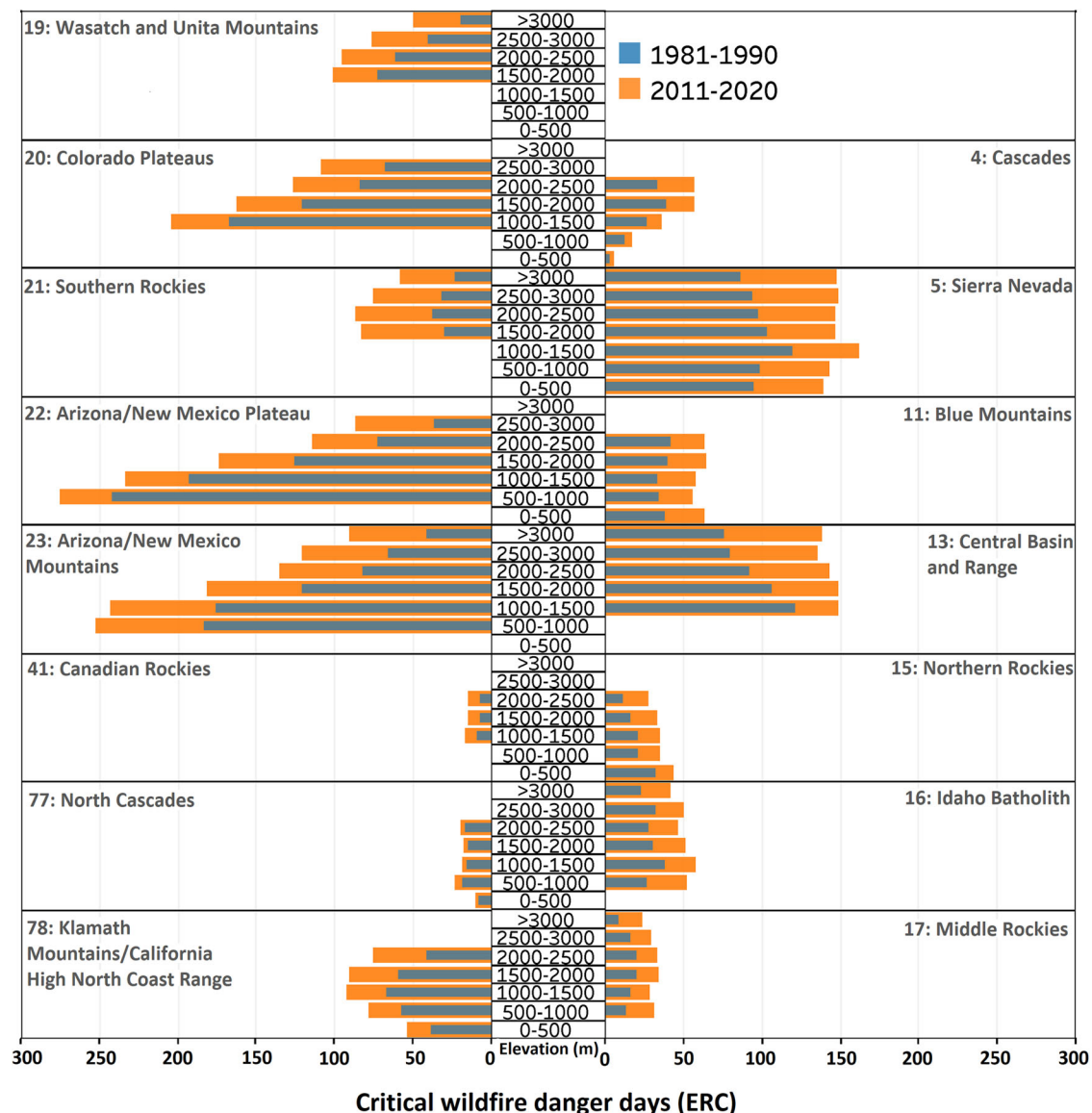


Fig. 5 | Annual critical fire danger days. Decadal average critical fire danger days per year based on energy release component (ERC) ≥ 60, during 1981–1990 (blue) and 2011–2020 (orange). “m” stands for meter.

Methods

We calculated the warm-season average of meteorological and US National Fire Danger Rating System indices, herein referred to as fire danger indices, using daily values in each grid from the gridMET³¹ dataset (~4 km resolution), and then averaged them for each 500 m elevation band in 15 mountainous ecoregions of the western US. We selected Omernik level 3 ecoregions²⁸ that encompass mountain ranges of the western US. We then used these variables for (1) estimating least squares linear trends in warm-season averages and (2) quantifying the number of critical fire danger days. We considered fire drivers in each ecoregion separately since each ecoregion includes rather similar ecoclimatic characteristics. We divided each ecoregion to land encapsulated in 500 m elevation bands (e.g., band 1: 0–500 m above sea level, a.s.l., band 2: 500–1000 m a.s.l., ..., band 7: >3000 m a.s.l.) to investigate elevation-dependent trends in various biophysical and atmospheric variables. We removed bands with <250 km² of land (less than 16 grid cells in gridMET) from the analysis to ensure robust results. Supplementary Table S4 lists the surface area encapsulated in each elevation band in each ecoregion.

We used daily average temperature, precipitation, vapor pressure deficit (VPD), energy release component (ERC), burning index (BI), 100-h dead fuel moisture (FM100, representing small diameter fuel), 1000-h dead fuel moisture (FM1000, representing large diameter fuel), minimum and maximum daily relative humidity (Rmin and Rmax, respectively), and specific humidity (SPH). We used the US National Fire Danger Rating System^{77,24} for the calculation of fire danger indices. Furthermore, we employed the Fuel Model G (dense conifer stands) for ERC and BI calculations over the entire western US landscapes as a fuel-agnostic measure for documenting climate-driven fire danger trends, not to conflate heterogeneity in vegetation distribution with heterogeneity in climate trends. We defined the warm season as May–September since this period is associated with enhanced fire activity in the western US. For warm-season trends, we used the May–September average of each variable. We present the results based on ERC in the main paper and other variables in the Supplementary Information.

For critical fire danger days, we counted the number of days in which the daily variable exceeded its defined threshold. This threshold is selected from the literature and is associated with increased fire

activity and growth potential^{36,54}. Threshold values were selected as: ERC = 60; FM100 = 8%, FM1000 = 10%, and VPD = 2 kPa^{54,55}. We augmented this analysis with a local percentile-based threshold for high and extreme fire danger days, in which the 75th and 95th (25th and 5th for fuel moisture) percentiles of long-term daily time series of various variables in each grid pooled over the entire calendar year were selected as the threshold, and the number of high and extreme fire danger days in each grid in each year was estimated accordingly. Grid estimates were then averaged over the entire elevation band, which were subsequently used for trend analyses. In all analyses, the slope of linear least squares regression was presented. The underlying warm-season ERC data justified the use of linear trends (Supplementary Fig. S54), but we acknowledge that not all variables necessarily satisfy the assumptions of a linear regression analysis. We provided warm-season averages of all variables in the Supplementary Data to enable more in-depth analyses. Finally, the two-sided *t*-statistic was used to test the null hypothesis that the slope coefficient of linear regression is equal to zero. Upon rejection of the null hypothesis (*p*-value ≤ 0.05), we accept the alternative hypothesis that the trend is significant.

Data availability

The referenced climate and fire danger data can be obtained from the gridMET dataset available at: <https://www.climatologylab.org/gridmet.html>. The referenced Omernik ecoregion boundaries are available at: <https://www.epa.gov/eco-research/level-iii-and-iv-ecoregions-continental-united-states>. The referenced elevation data are obtained from the National Elevation Dataset, which is available at: <https://www.usgs.gov/the-national-map-data-delivery>. The processed elevation-dependent warm-season fire danger indices are available in the Supplementary Data 1 file.

Code availability

Source codes are available at: Alizadeh (2022)⁵⁶. [alizadeh-mr/Wildfire-danger-indices: Initial Release \(v1.0.0\). Zenodo, \(https://doi.org/10.5281/zenodo.7424926\)](https://zenodo.org/record/7424926)

References

- Viviroli, D., Dürr, H. H., Messerli, B., Meybeck, M. & Weingartner, R. Mountains of the world, water towers for humanity: typology, mapping, and global significance. *Water Resour. Res.* **43**, W07447 (2007).
- Li, D., Wrzesien, M. L., Durand, M., Adam, J. & Lettenmaier, D. P. How much runoff originates as snow in the western United States, and how will that change in the future? *Geophys. Res. Lett.* **44**, 6163–6172 (2017).
- Diaz, H. F., Grosjean, M. & Graumlich, L. Climate variability and change in high elevation regions: past, present and future. *Clim. Change* **59**, 1–4 (2003).
- Beniston, M., Diaz, H. F. & Bradley, R. S. Climatic change at high elevation sites: an overview. *Clim. Change* **36**, 233–251 (1997).
- AghaKouchak, A. et al. How do natural hazards cascade to cause disasters? *Nature* **561**, 458–460 (2018).
- Pepin, N. C. et al. Climate changes and their elevational patterns in the mountains of the world. *Rev. Geophys.* **60**, e2020RG000730 (2022).
- Pepin, N. et al. Elevation-dependent warming in mountain regions of the world. *Nat. Clim. Change* **5**, 424–430 (2015).
- You, Q. et al. Elevation dependent warming over the Tibetan Plateau: patterns, mechanisms and perspectives. *Earth Sci. Rev.* **210**, 103349 (2020).
- Diaz, H. F. & Bradley, R. S. Temperature variations during the last century at high elevation sites. *Clim. Change* **36**, 253–279 (1997).
- Aguilar-Lome, J. et al. Elevation-dependent warming of land surface temperatures in the Andes assessed using MODIS LST time series (2000–2017). *Int. J. Appl. Earth Obs. Geoinf.* **77**, 119–128 (2019).
- Sun, J. et al. Elevation-dependent changes in reference evapotranspiration due to climate change. *Hydrol. Process.* **34**, 5580–5594 (2020).
- Mote, P. W., Hamlet, A. F., Clark, M. P. & Lettenmaier, D. P. Declining mountain snowpack in western North America. *Bull. Am. Meteorol. Soc.* **86**, 39–50 (2005).
- Bormann, K. J., Brown, R. D., Derksen, C. & Painter, T. H. Estimating snow-cover trends from space. *Nat. Clim. Change* **8**, 924–928 (2018).
- Lucht, W. et al. Climatic control of the high-latitude vegetation greening trend and Pinatubo effect. *Science* **296**, 1687–1689 (2002).
- Tao, J. et al. Elevation-dependent effects of climate change on vegetation greenness in the high mountains of southwest China during 1982–2013. *Int. J. Climatol.* **38**, 2029–2038 (2018).
- Luce, C. H., Abatzoglou, J. T. & Holden, Z. A. The missing mountain water: slower westerlies decrease orographic enhancement in the Pacific Northwest USA. *Science* **342**, 1360–1364 (2013).
- Deeming, J. E., Burgan, R. E. & Cohen, J. D. The national fire-danger rating system, 1978. Report No. INT-GTR-39 (U.S. Department of Agriculture, Forest Service, Intermountain Forest and Range Experiment Station, 1977).
- Khorshidi, M. S. et al. Increasing concurrence of wildfire drivers tripled megafire critical danger days in Southern California between 1982 and 2018. *Environ. Res. Lett.* **15**, 104002 (2020).
- Abatzoglou, J. T., Juang, C. S., Williams, A. P., Kolden, C. A. & Westerling, A. L. Increasing synchronous fire danger in forests of the western United States. *Geophys. Res. Lett.* **48**, e2020GL091377 (2021).
- Jain, P., Castellanos-Acuna, D., Coogan, S. C., Abatzoglou, J. T. & Flannigan, M. D. Observed increases in extreme fire weather driven by atmospheric humidity and temperature. *Nat. Clim. Change* **12**, 63–70 (2022).
- Jolly, W. M. et al. Climate-induced variations in global wildfire danger from 1979 to 2013. *Nat. Commun.* **6**, 1–11 (2015).
- Alizadeh, M. R. et al. Warming enabled upslope advance in western US forest fires. *Proc. Natl Acad. Sci. USA* **118**, e2009717118 (2021).
- Higuera, P. E., Shuman, B. N. & Wolf, K. D. Rocky Mountain subalpine forests now burning more than any time in recent millennia. *Proc. Natl Acad. Sci. USA* **118**, e2103135118 (2021).
- Cohen, J. D. & Deeming, J. E. The national fire-danger rating system: basic equations. Report No. PSW-GTR-82 (U.S. Department of Agriculture, Forest Service, Pacific Southwest Forest and Range Experiment Station, 1985).
- Abatzoglou, J. T. & Kolden, C. A. Relationships between climate and macroscale area burned in the western United States. *Int. J. Wildland Fire* **22**, 1003–1020 (2013).
- Freeborn, P. H., Cochrane, M. A. & Jolly, W. M. Relationships between fire danger and the daily number and daily growth of active incidents burning in the northern Rocky Mountains, USA. *Int. J. Wildland Fire* **24**, 900–910 (2015).
- Jolly, W. M., Freeborn, P. H., Page, W. G. & Butler, B. W. Severe fire danger index: a forecastable metric to inform firefighter and community wildfire risk management. *Fire* **2**, 47 (2019).
- Omernik, J. M. Ecoregions of the conterminous United States. *Ann. Assoc. Am. Geogr.* **77**, 118–125 (1987).
- Abatzoglou, J. T. & Williams, A. P. Impact of anthropogenic climate change on wildfire across western US forests. *Proc. Natl Acad. Sci. USA* **113**, 11770–11775 (2016).
- Madadgar, S., Sadegh, M., Chiang, F., Ragno, E. & AghaKouchak, A. Quantifying increased fire risk in California in response to different levels of warming and drying. *Stoch. Environ. Res. Risk Assess.* **34**, 2023–2031 (2020).
- Abatzoglou, J. T. Development of gridded surface meteorological data for ecological applications and modelling. *Int. J. Climatol.* **33**, 121–131 (2013).

32. Cansler, C. A., McKenzie, D. & Halpern, C. B. Area burned in alpine treeline ecotones reflects region-wide trends. *Int. J. Wildland Fire* **25**, 1209–1220 (2016).
33. Cansler, C. A., McKenzie, D. & Halpern, C. B. Fire enhances the complexity of forest structure in alpine treeline ecotones. *Ecosphere* **9**, e02091 (2018).
34. Schwartz, M. W. et al. Increasing elevation of fire in the Sierra Nevada and implications for forest change. *Ecosphere* **6**, 1–10. (2015).
35. Kueppers, L. M., Snyder, M. A. & Sloan, L. C. Irrigation cooling effect: regional climate forcing by land-use change. *Geophys. Res. Lett.* **34**, L03703 (2007).
36. Brown, T. J., Hall, B. L. & Westerling, A. L. The impact of twenty-first century climate change on wildland fire danger in the western United States: an applications perspective. *Clim. Change* **62**, 365–388 (2004).
37. Short, K. C. Spatial wildfire occurrence data for the United States, 1992–2018 [FPA_FOD_20210617]: 5th edition. Forest Service Research Data Archive <https://doi.org/10.2737/RDS-2013-0009.5> (2023).
38. Williams, A. P. et al. Large contribution from anthropogenic warming to an emerging North American megadrought. *Science* **368**, 314–318 (2020).
39. Holden, Z. A. et al. Decreasing fire season precipitation increased recent western US forest wildfire activity. *Proc. Natl Acad. Sci. USA* **115**, E8349–E8357 (2018).
40. Alizadeh, M. R. et al. A century of observations reveals increasing likelihood of continental-scale compound dry-hot extremes. *Sci. Adv.* **6**, eaaz4571 (2020).
41. Berg, A. et al. Land–atmosphere feedbacks amplify aridity increase over land under global warming. *Nat. Clim. Change* **6**, 869–874 (2016).
42. Houze, R. A. Jr Orographic effects on precipitating clouds. *Rev. Geophys.* **50**, 38 (2012).
43. Rangwala, I. & Miller, J. R. Climate change in mountains: a review of elevation-dependent warming and its possible causes. *Clim. Change* **114**, 527–547 (2012).
44. McKendry, I. G. et al. Impacts of an intense wildfire smoke episode on surface radiation, energy and carbon fluxes in southwestern British Columbia, Canada. *Atmos. Chem. Phys.* **19**, 835–846 (2019).
45. Tosca, M. G., Randerson, J. T. & Zender, C. S. Global impact of smoke aerosols from landscape fires on climate and the Hadley circulation. *Atmos. Chem. Phys.* **13**, 5227–5241 (2013).
46. Kuhn, J. R., Libbrecht, K. G. & Dicke, R. H. The surface temperature of the sun and changes in the solar constant. *Science* **242**, 908–911 (1988).
47. Paine, R. T., Tegner, M. J. & Johnson, E. A. Compounded perturbations yield ecological surprises. *Ecosystems* **1**, 535–545 (1998).
48. Stevens-Rumann, C. S. et al. Evidence for declining forest resilience to wildfires under climate change. *Ecol. Lett.* **21**, 243–252 (2018).
49. Carter, V. A. et al. A 1,500-year synthesis of wildfire activity stratified by elevation from the US Rocky Mountains. *Quat. Int.* **488**, 107–119 (2018).
50. Lamprecht, A., Semenchuk, P. R., Steinbauer, K., Winkler, M. & Pauli, H. Climate change leads to accelerated transformation of high-elevation vegetation in the central Alps. *New Phytol.* **220**, 447–459 (2018).
51. Isaak, D. J. et al. Effects of climate change and wildfire on stream temperatures and salmonid thermal habitat in a mountain river network. *Ecol. Appl.* **20**, 1350–1371 (2010).
52. Schanz, S. A., Montgomery, D. R. & Collins, B. D. Anthropogenic strath terrace formation caused by reduced sediment retention. *Proc. Natl Acad. Sci. USA* **116**, 8734–8739 (2019).
53. Halofsky, J. E., Peterson, D. L. & Harvey, B. J. Changing wildfire, changing forests: the effects of climate change on fire regimes and vegetation in the Pacific Northwest, USA. *Fire. Ecology* **16**, 1–26 (2020).
54. Abatzoglou, J. T., Balch, J. K., Bradley, B. A. & Kolden, C. A. Human-related ignitions concurrent with high winds promote large wildfires across the USA. *Int. J. Wildland Fire* **27**, 377–386 (2018).
55. de Dios, V. R. et al. Convergence in critical fuel moisture and fire weather thresholds associated with fire activity in the pyroregions of Mediterranean Europe. *Sci. Total Environ.* **806**, 151462 (2022).
56. Alizadeh, M. R. alizadeh-mr/wildfire-danger-indices: initial release (v1.0.0). Zenodo <https://doi.org/10.5281/zenodo.7424926> (2022).
57. OpenStreetMap contributors. Planet OSM. <https://planet.osm.org>, <https://www.openstreetmap.org> (2017).

Acknowledgements

We acknowledge support from the US Joint Fire Science Program grant number L21AC10247 (M.S. and J.T.A.) and the Fonds de recherche du Québec – Nature et Technologies (FRQNT) number (B3X-321272) (M.R.A.). We appreciate the Google Earth Engine and Google Collaboratory platforms for the computational resources.

Author contributions

M.S., M.R.A., and J.T.A. conceived the study and wrote the first draft of the manuscript. M.R.A. conducted all the analyses. J.A., A.M.R., A.A., and F.S.R.P. contributed to the analysis and final paper.

Competing interests

The authors declare no competing interests.

Additional information

Supplementary information The online version contains supplementary material available at <https://doi.org/10.1038/s41467-023-37311-4>.

Correspondence and requests for materials should be addressed to Mojtaba Sadegh.

Peer review information *Nature Communications* thanks the anonymous reviewer(s) for their contribution to the peer review of this work. Peer reviewer reports are available.

Reprints and permissions information is available at <http://www.nature.com/reprints>

Publisher's note Springer Nature remains neutral with regard to jurisdictional claims in published maps and institutional affiliations.

Open Access This article is licensed under a Creative Commons Attribution 4.0 International License, which permits use, sharing, adaptation, distribution and reproduction in any medium or format, as long as you give appropriate credit to the original author(s) and the source, provide a link to the Creative Commons license, and indicate if changes were made. The images or other third party material in this article are included in the article's Creative Commons license, unless indicated otherwise in a credit line to the material. If material is not included in the article's Creative Commons license and your intended use is not permitted by statutory regulation or exceeds the permitted use, you will need to obtain permission directly from the copyright holder. To view a copy of this license, visit <http://creativecommons.org/licenses/by/4.0/>.

© The Author(s) 2023