

UC Davis

UC Davis Previously Published Works

Title

Relationship between the molecular composition, visible light absorption, and health-related properties of smoldering woodsmoke aerosols

Permalink

<https://escholarship.org/uc/item/3653x6tj>

Authors

Chan, Lam Kam
Nguyen, Khanh Q
Karim, Noreen
et al.

Publication Date

2019-09-10

DOI

10.5194/acp-2019-751

Peer reviewed

Relationship between the molecular composition, visible light absorption, and health-related properties of smoldering woodsmoke aerosols

Lam Kam Chan, Khanh Q. Nguyen, Noreen Karim, Yatian Yang[‡], Robert H. Rice, Guochun He, Michael S. Denison, and Tran B. Nguyen*

5 Department of Environmental Toxicology, University of California Davis, Davis, CA 95616

[‡] Now at: Department of Biochemistry and Molecular Medicine, UC Davis School of Medicine, Sacramento, USA

Correspondence to: T.B. Nguyen (tbn@ucdavis.edu)

Abstract. Organic aerosols generated from the smoldering combustion of wood critically impact air quality and health for
10 billions of people worldwide; yet, the links between the chemical components and the optical or biological effects of
woodsmoke aerosols (WSA) are still poorly understood. In this work, an untargeted analysis of the molecular composition of
smoldering WSA, generated in a controlled environment from nine types of heartwood fuels (African Mahogany, Birch,
Cherry, Maple, Pine, Poplar, Red Oak, Redwood, and Walnut) identified several hundred compounds using gas
15 chromatography mass spectrometry (GC-MS) and nano-electrospray high-resolution mass spectrometry (HRMS) with tandem
multistage mass spectrometry (MSⁿ). The effects of WSA on cell toxicity, aryl hydrocarbon receptor (AhR)- and estrogen
receptor (ER)-dependent gene expression were characterized with cellular assays, and the visible mass absorption coefficients
(MAC_{vis}) of WSA were measured with UV-visible spectroscopy. The WSA studied in this work have significant levels of
biological and toxicological activity, with exposure levels in both an outdoor and indoor environment similar to or greater than
20 those of other toxicants. A correlation between the HRMS molecular composition and aerosol properties found that phenolic
compounds from the oxidative decomposition of lignin are the main drivers of aerosol effects, while the cellulose
decomposition products play a secondary role, e.g., levoglucosan is anti-correlated with multiple effects. Polycyclic aromatic
hydrocarbons (PAHs) are not expected to form at the combustion temperature in this work, nor were observed above the
detection limit; thus, biological and optical properties of the smoldering WSA are not attributed to PAHs. Syringyl compounds
25 tend to correlate with cell toxicity, while the more conjugated molecules (including several compounds assigned to dimers)
have higher AhR activity and MAC_{vis}. The negative correlation between cell toxicity and AhR activity suggests that the toxicity
of smoldering WSA to cells is not mediated by the AhR. Both mass-normalized biological outcomes have a statistically-
significant dependence on the degree of combustion of the wood. In addition, our observations support that the visible light
absorption of WSA is at least partially due to charge transfer effects in aerosols, as previously suggested. Finally, MAC_{vis} has
no correlation with toxicity or receptor signaling, suggesting that key chromophores in this work are not biologically active on
30 the endpoints tested.

1. Introduction

The combustion of wood from, for example, residential fireplaces, forest fires, and prescribed burns is a large source of fine particulate matter (PM_{2.5}) in the United States and much of the world (Rogge et al., 1998; EPA, 2003; Mazzoleni et al., 2007; Park et al., 2007; Swiston et al., 2008; Zhang et al., 2013), particularly in winter when woodsmoke aerosols (WSA) can account
35 for the majority of organic carbon and up to 90% of PM_{2.5} regionally (Rogge et al., 1998; Gorin et al., 2006; Kleeman et al., 2008; NYSERDA, 2008). In an indoor environment, the incomplete combustion of solid fuels (64 – 95% wood usage in rural India at, but also dung and crops (Menon, 1988)) is the main source of indoor air pollution exposure to roughly 3 billion people worldwide (WHO, 2011). This indoor WSA exposure occurs mostly in developing nations and mostly to women and children, possibly accounting for the highest burden of environmental disease globally (Ezzati and Kammen, 2002; WHO, 2002; Smith
40 and Mehta, 2003).

Multiple factors impact the combustion chemistry, such as the wood composition (lignin/cellulose fractions, lignin H/G/S composition, natural monomers such as resins, waxes, sugars), water fraction, environmental conditions, and other factors, which in turn impact the aerosol composition and effects. During a typical fire, the high-intensity but short initial period of flaming combustion is correlated with CO₂ production and emissions that rise to higher altitudes. In contrast, the low-intensity
45 but long period of smoldering combustion is correlated with CO and other products of incomplete combustion, and emissions that remain closer to the ground (Andreae and Merlet, 2001) where they are more likely inhaled. Smoldering combustion, which produces a higher quantity of particles and most of the organic species in a fire (Einfeld et al., 1991; Yokelson et al., 1997; Bertschi et al., 2003), is responsible for a majority of biomass consumption during prescribed burns, residential wood burning, cigarette smoke, and fires from tropical and temperate forests and deforestation areas (Standley and Simoneit, 1990;
50 Ward et al., 1992; Yokelson et al., 1997; Simoneit et al., 2000; Ohlemiller, 2002; Rabelo et al., 2004). Due to the high toxicant production, the emissions from smoldering combustion are recommended to be used to assess health exposure (Morawska and Zhang, 2002). This work focuses on the organic aerosols generated from smoldering combustion of woods in a controlled laboratory setting.

The significant adverse health effects of WSA on endpoints such as mortality, morbidity, respiratory disease, cancer, among
55 others, are well-documented and are characterized to be as serious, if not more so, than other sources of particulate matter (Lewis et al., 1988; Zelikoff et al., 2002; Boman et al., 2003; Kubátová et al., 2006; Orozco-Levi et al., 2006; Lewtas, 2007; Swiston et al., 2008; Danielsen et al., 2011). For example, organic extracts of particulate matter with high WSA content are approximately 30 times more potent than cigarette smoke condensate in a tumor induction assay (Cupitt et al., 1994). Yet, it is not clear whether the health-related effects of the WSA organics can be attributed to toxicants other than the well-studied
60 polycyclic aromatic hydrocarbons (PAHs), such as the multifunctional aldehydes, ketones, phenols, organic nitrogen, organic acids, etc. (Hedberg et al., 2002) that are also present in WSA with largely unknown biological effects. Previous bulk analyses have shown that the emissions of total particulate matter and PAHs depend on the wood type and burn conditions (Maga and

Chen, 1985; Bølling et al., 2009; Nyström et al., 2017). High-resolution mass spectrometry (HRMS) analyses have offered insight into the complex molecular composition of aerosols from biomass combustion (Smith et al., 2008; Laskin et al., 2009; 65 Lin et al., 2016; Lin et al., 2017; Fleming et al., 2018). However, the links between the chemical origin and macroscopic endpoints are still poorly understood. This work focuses on two critical gaps in knowledge surrounding woodsmoke (Naeher et al., 2007): the fundamental understanding of (1) how different types of woods and burn conditions affect the molecular composition and (2) relationships between the aerosol's properties and its chemical composition.

We measured the total cellular toxicity effects of smoldering WSA. In addition, the Ah receptor (AhR) and estrogen receptor 70 (ER) are known to play critical regulatory roles in mediating the biological and toxicological effects of diverse environmental chemicals. As wood combustion produces PAH-like compounds and phenolic compounds, classes of chemicals that are known to activate the AhR and/or ER signaling pathways (Denison and Nagy, 2003; Krüger et al., 2008; Stejskalova et al., 2011; Li et al., 2012; Cipolletti et al., 2018), we measured the AhR and ER activities of smoldering WSA. Alongside biological effects, we also studied the potential chromophores responsible for the visible light absorption of smoldering WSA. The combustion 75 of wood (and other biomass) is known to produce “brown carbon” aerosols (Andreae and Gelencser, 2006), which absorb light in the troposphere and appear yellow or brown to the eye. Although most of the absorption of WSA and other biomass burning aerosols is due to elemental carbon (soot) in the atmosphere, the organic aerosols such as in smoldering WSA represent a secondary but not insignificant fraction (Kirchstetter and Thatcher, 2012; Washenfelder et al., 2015).

2. Experimental

80 2.1. Smoldering combustion woodsmoke aerosols

Woodsmoke aerosol (WSA) samples were prepared in a 40 L smoldering combustion chamber (**Fig. 1**) that is fitted with Teflon tubing. The relative humidity (RH) for the combustion was set to ~ 40%, as verified by a membrane humidity probe (Vaisala Inc.), chosen to be consistent with the RH range found in some indoor environments (Salonvaara et al., 2004; Irulegi et al., 2017), where residential wood burning may occur, and with the daytime RH that are correlated with wildfire events 85 (highest burned areas at RH 38 - 42%) (Flannigan and Harrington, 1988; Piñol et al., 1998). Humidified ultra zero air in the chamber was achieved by combining a ~ 1.5 L min⁻¹ humid flow through a wet-wall humidifier with a ~ 2.5 L min⁻¹ dry flow from a high-pressure cylinder (Airgas UZA: 20 – 22% O₂ in N₂, 2 ppm H₂O, 1 ppm CO₂, 1 ppm CO, 0.1 ppm total hydrocarbons) through flow restrictors.

90 Heartwood samples of nine types of wood (African Mahogany, Birch, Cherry, Maple, Pine, Poplar, Red Oak, Redwood, and Walnut) were purchased from a lumber store local to Davis, CA and were cut into 4 cm x 2 cm x 1 cm blocks, using a blade cleaned with isopropanol between each use. The subset of wood species selected are a combination of softwoods (Redwood, Pine) and hardwoods that can be found in North American forests (Burns and Honkala, 1990) and often used for firewood or

for building homes and furniture. Approximately two wood blocks with an average mass of 2.5 g each were used for every
95 burn with a combustion temperature of 330 °C, which produced a thick white smoke from the smoldering process. After 15
minutes of combustion, aerosols were collected from the center of the chamber, approximately 15 – 20 cm above the fuel
source, for 25 minutes with a Polyvinylidene fluoride filter (Millipore Sigma, 0.65 µm pore size) and a flow rate of
approximately 2 L min⁻¹ (the remaining flow is discarded through the vent). An average of 85% by mass of the fuel source
was burned. The temperature at the location immediately upstream of aerosol collection was approximately 25 °C. The tubing
100 in contact with aerosols and filter collection apparatus was cleaned between each burn using isopropanol. Multiple (> 3) burns
of each wood type were performed, with reproducible results.

The WSA samples were gravimetrically analyzed and, if not used immediately, vacuum-sealed in polyethylene filter holders
and stored at –10°C. Prior to analyses, WSA were extracted in solvent using a mixture of 1:1 ultrapure water and acetonitrile
with 30 minutes room-temperature agitation on an orbital shaker (IKA Inc.) at 1000 rpm. Each extraction used the required
105 solvent to achieve a mass concentration of 5 mg mL⁻¹, depending on the WSA mass collected, and were diluted for analyses
as necessary.

2.2. Molecular composition analysis

Diluted WSA extracts (100 µg mL⁻¹) were analyzed for organic molecular composition using a linear-trap-quadrupole Orbitrap
(LTQ-Orbitrap) mass spectrometer (Thermo Corp.) at a mass resolving power of ~ 100,000 m/Δm at m/z 200. The WSA
110 extracts were directly infused into a capillary nano-electrospray ion source (ESI, 50 µm fused-silica capillary tip, 4 kV spray
voltage, 275°C capillary temperature, 15 µL min⁻¹ flow), and the spectra were taken at a mass range of m/z 50 – 1000 in the
positive ion mode. Ionization mechanisms in the positive ion mode ESI include protonation ([M+H]⁺ ions) and/or sodiation
([M+Na]⁺ ions). An external 11-point mass calibration in the m/z range of 100 – 600 was performed using a variety of analytical
standard solutions (ESI-L tuning mix, amine mixture, and others, (Supelco Inc.)) immediately prior to the MS analysis, such
115 that the mass accuracy is adjusted to be approximately 1 ppm for standard compounds. Insights into molecular structure were
obtained using collision induced dissociation (CID) multistage tandem mass spectrometry (MSⁿ, stages 2 – 4) in the LTQ-
Orbitrap for ions that have adequate signal. CID energy was tuned for each mass, so that the normalized precursor ion had 10
– 20% abundance, and neutral or radical losses were analyzed using the Thermo Xcalibur software suite.

The sample mass spectra with signal to noise ratio (S/N) > 3 were processed by subtracting the background mass spectra of
120 the blank filter extracts, deconvoluted with a quadratic fit model and deisotoped using Decon2LS tools (freeware from PNNL),
mass corrected with the external calibration curve, and assigned to molecular formulas using a custom Matlab protocol based
on heuristic mass filtering rules (Kind and Fiehn, 2007) and Kendrick Mass (KM) defect analysis (Kendrick, 1963; Roach et
al., 2011) with KM base of CH₂. Correlations with HRMS peaks are performed using Matlab's linear regression model fitlm.
Least-squares fit results with coefficients (R²) greater than 0.4 having slopes in either direction are reported.

125 The less polar, higher-volatility components of WSA were extracted using ethyl acetate at 100 $\mu\text{g mL}^{-1}$ and analyzed with gas chromatography mass spectrometry (GC-MS) on an Agilent 6890 GC and 5973 MS detector using an HP-5MS column (30 m x 250 μm x 0.25 μm) and the following temperature program: 50°C (0.5 min hold), 12°C min^{-1} until 260°C (12 min hold). An EPA-610 method for PAHs (US EPA, 2005) and PAH certified calibration standard (TraceCERT, 16 components) were also used to verify if the WSA contained PAHs. The analytes were identified by their electron-ionization fragmentation at 70 eV
130 – the spectra were compared to those from the GC-MS library from the National Institute of Standards and Technology.

2.3. Mass Absorption Coefficient

The visible light absorption of WSA extracts were measured using a dual beam UV-visible spectrophotometer (UV-1800, Shimadzu Corp.) and 1 cm quartz cuvettes at multiple extract concentrations. The per-gram light absorption of WSA extracts were calculated as a mass absorption coefficient (Moosmüller et al., 2011):

$$135 \quad MAC(\lambda) = \frac{A(\lambda) \cdot \ln(10)}{C \cdot L} \quad (1)$$

where $A(\lambda)$ is the wavelength-dependent absorbance of the WSA extract, C is the extract concentration (0.005 g mL^{-1}), and L is the pathlength of the light absorption (1 cm). To account for the wavelength dependence of MAC and compare between the WSA extracts in this study, we used an average MAC that was integrated in the visible region:

$$MAC_{vis} = \frac{1}{700\text{nm} - 400\text{nm}} \int_{400\text{nm}}^{700\text{nm}} MAC(\lambda) d\lambda \quad (2)$$

140 The absorption spectra (**Fig. S1**) of the WSA extracts in this study are consistent with other ambient brown carbon spectra, where a featureless tailing absorption is observed into the visible wavelengths. As this work is focused on visible-light-absorbing chromophores, the UV portion of the brown carbon absorption was not examined. MAC_{vis} values determined at multiple extract concentrations varied less than 5% (**Fig. S2**).

2.4. Cell Toxicity Bioassay

145 Human epidermal keratinocytes were used to determine the toxicity of WSA. Keratinocytes can be found naturally in the upper respiratory tract, oral cavity, and formed in the trachea as a response to air pollution, cigarette smoke, and woodsmoke inhalation exposure (Plamenac et al., 1979b; Plamenac et al., 1979a; Lee et al., 1994; Moran-Mendoza et al., 2008). Moreover, they have been shown to be a useful model for responses common to epithelial cells (Rhim, 1989; Neugebauer et al., 1996; Rogers et al., 2001). When exposed to toxic xenobiotic compounds, keratinocytes form an envelope of isopeptide cross-linked
150 protein at the plasma membrane (Rice and Green, 1979). The cross-linking can be induced by permeabilization of the cells, permitting a rise in cytosolic calcium ions that activates the membrane-bound transglutaminase TGM1 and results in cell death. The protein content from envelope formation serves as a quantitative biomarker of cell damage from toxic exposures.

Briefly, cells were cultured and assayed as follows: spontaneously immortalized keratinocytes (SIK, passages 25-35) were serially cultivated in a 2:1 mixture of Dulbecco-Vogt Eagle's and Ham's F-12 media supplemented with fetal bovine serum (FBS) (5%), hydrocortisone (0.4 µg/ml), epidermal growth factor (10 ng/ml), insulin (5 µg/ml), transferrin (5 µg/ml) and 0.18 mM adenine (Allen-Hoffmann and Rheinwald, 1984; Rice et al., 1993). SIK cultures have a single chromosomal aberration that permits continuous growth throughout the range of passages employed while altering their behaviour only minimally (Rice et al, 1993). After reaching confluence in 24 well plates, the cell cultures were incubated in a medium lacking epidermal growth factor for two days. Cultures were then incubated for 48 h with extracts of WSA (5 mg/mL in 1:1 v/v water:acetonitrile, 15 – 240 µL) in the concentration range of 0.23 to 3.75 mg/mL in a total well volume of 320 µL, to increase the assay sensitivity while conserving cell viability. After incubation, the medium was discarded, and the cultures were further incubated for 24 h in an aqueous solution of 2% sodium dodecyl sulfate, 20 mM dithiothreitol and 50 mM Tris buffer (pH 8) at 37°C. The envelopes from each well were isolated by centrifugation, rinsed 3 times in 0.1 % sodium dodecyl sulfate and assayed for relative protein content with bicinchoninic acid, quantified colorimetrically at a wavelength of 495 nm (Smith et al., 1985). As the protein structures of SIK cells exposed to WSA were isolated during the washing process, no interference from WSA absorption occurs in the colorimetric analysis. WSA extracts were assayed at each concentration in triplicate. Blank controls (extracted blank filter) and solvent controls did not result in envelope formation, nor inhibition of envelope formation. Ionophore X5375, which is known to induce envelope formation in the large majority of cells (Rice and Green, 1979), was used as the positive control.

The half maximal effective concentration (EC_{50}) of the WSA extract that induced a cell toxicity response halfway between the baseline and the maximum activity, was obtained using concentration-response curves fitted in Origin software with adjusted $R^2 > 0.94$. The EC_{50} uncertainties were propagated from fit uncertainties and the standard deviations of triplicate analyses. Individual concentration-response curves and fits for the WSA extracts are shown in **Figure S3**.

2.4. Aryl hydrocarbon Receptor (AhR) and Estrogen Receptor (ER) bioassays

Screening of WSA extracts for AhR- or ER-active compounds were carried out using recombinant mouse hepatoma (H1L6.1c2) cells containing a stably integrated AhR-responsive luciferase reporter gene plasmid (pGudLuc6.1) and human breast carcinoma (VM7Luc4E2) cells containing a stably integrated ER-responsive luciferase reporter gene plasmid (pGudLuc7ere), as previously described (He et al., 2014; Brennan et al., 2016). Briefly, for AhR analysis, H1L6.1c2 cells in growth medium (alpha minimal essential media (aMEM) containing 10% FBS) were plated (75,000 cells/well) into white, clear-bottomed 96-well tissue culture plates and incubated at 37°C for 24 h prior to the addition of WSA extracts. For ER analysis, VM7Luc4E2 cells were switched from maintenance medium (aMEM containing 10% FBS) to estrogen-stripped medium (phenol red-free aMEM containing 10% charcoal-stripped FBS), incubated for 3 days at 37°C before plating into white, clear-bottomed 96-well tissue culture plates at a density of 75,000 cells/well and further incubated at 37 °C for 24 h prior to chemical addition. Cells were incubated with 1 µL of: DMSO solvent (1% (v/v)), the reference standard dissolved in

185 DMSO (2,3,7,8-tetrachlorodibenzo-p-dioxin (TCDD) for H1L6.1.c2 cells and 17 β -estradiol (E2) for VM7Luc4E2 cells),
acetonitrile solvent, or WSA extract for 24 h.

After incubation, cells were visually inspected for signs of toxicity, rinsed twice with phosphate-buffered saline, followed by
the addition of Promega cell lysis buffer, and shaking for 20 min at room temperature to allow complete cell lysis. Luciferase
activity in each well was measured by using an Orion microplate luminometer as previously described (He et al., 2014).
190 Luciferase activity was corrected for background activity in DMSO-/acetonitrile-treated cells and values (in relative light units
(RLUs)) expressed as a percent of the luciferase activity obtained with the maximally inducing concentration of TCDD or E2.
All incubations and analyses were performed in triplicate. TCDD bioanalytical equivalents (BEQs) for AhR active samples
were determined by comparison of the luciferase activity of the sample extract to that in a TCDD concentration response curve,
as described elsewhere (Baston and Denison, 2011), and shown in **Figure S4**. The relative magnitude of AhR and ER induction
195 by WSA (5×10^{-6} g of original material in each plate well) was normalized to the equivalent level of AhR and ER luciferase
gene induction from the TCDD and ER concentration response curves, respectively, on a g/g basis. The uncertainties in AhR
and ER relative activity were propagated from the uncertainties in the triplicate determinations and the reference calibration
concentration-response curves.

3. Results and Discussion

200 3.1. Biological and optical properties of WSA

Table 1 shows cell toxicity, AhR activity, ER activity and MAC_{vis} results for the nine types of WSA extracts studied in this
work, normalized by the mass of the original aerosol material. The results provide a clear indication that this type of complex
mixture can affect macromolecular targets in cells. An important question is how relevant are the findings with smoldering
WSA to health effects from actual exposures. Although no assay will successfully reproduce the *in vivo* environment, i.e.,
205 exposure to approximately 40 different cell types in the respiratory tract, distribution of toxicants throughout the bloodstream
to major organs, and either deactivation or activation by metabolism, these (and other) *in vitro* results are useful as an
estimation of risk. Considering toxicity in an outdoor environment such as a wildfire event, PM_{2.5} concentrations in excess of
300 $\mu\text{g}/\text{m}^3$ can be observed in surrounding areas (Wu et al., 2006; Wegesser et al., 2009) and up to 2.7 mg/m^3 near the burn
site (Adetona et al., 2011). As much of the aerosol comes from the first and second smoldering phases (Alves et al., 2011), a
210 realistic exposure to smoldering WSA in cities surrounding a fire can be 100 $\mu\text{g}/\text{m}^3$. Assuming a typical pulmonary tidal
volume of 500 mL for adults (Beardsell et al., 2009), and the cell toxicity EC₅₀ of Red Oak smoldering WSA, we estimate that
a human adult would take ~ 2175 breaths to reach the EC₅₀ value. As a normal respiratory rate for an adult at rest is 12 breaths
per minute (Carey et al., 2005), the EC₅₀ limit is reached after 3 h of woodsmoke exposure, yet residents near fires can be
exposed to the smoke for many days (Wegesser et al., 2009). The acute exposure health risk of residential wood burning in
215 an indoor environment is more severe. PM_{2.5} concentrations around cookstoves are high (e.g., 1.8 mg/m^3) (Chowdhury et al.,

2012), such that the EC₅₀ limit is reached in ~ 120 breaths or 10 minutes, a highly plausible exposure duration that occurs almost daily for some people. The cell toxicity results are consistent with epidemiological and toxicological evidence for negative human health impacts of WSA ((Naeher et al., 2007), and references therein). In light of previous findings that smoldering combustion at medium temperature produces particles that are more toxic than those from high-temperature combustion or complete combustion ((Bølling et al., 2012), and references therein), the results from this work suggest that the smoldering fraction of WSA could significantly contribute to the overall WSA health impacts.

The interpretation of AhR activity of WSA is more complex. AhR (Denison and Heath-Pagliuso, 1998) is a ligand-activated transcription factor that mediates the biochemical and toxic effects of various well-recognized environmental toxicants, such as dioxins (Mandal, 2005; Denison et al., 2011) and PAHs (Machala et al., 2001; Barron et al., 2004; Billiard et al., 2006), but also a wide variety of other structurally-diverse chemicals (Denison and Nagy, 2003; Nguyen and Bradfield, 2007; Petkov et al., 2010). However, AhR-dependent (i.e. dioxin-like) toxicity appears to be mediated only by dioxin-like chemicals (e.g., polyhalogenated dibenzo-p-dioxins, dibenzofurans and biphenyls) and not all AhR agonists, the majority of which are metabolically inactivated. Determination of the presence of toxic AhR ligands in a sample requires extensive sample workup to isolate dioxin-like chemicals from the large number of nontoxic AhR active chemicals. Thus, the AhR bioassay results for WSA in this work provide a measure of the overall ability of the extract to activate the AhR and AhR-dependent gene expression and does not provide a direct measure of AhR-dependent toxic potency. However, they do not rule out the presence of toxic AhR ligands; further sample isolation and analytical analysis would be needed to confirm the presence of dioxin-like chemicals in the WSA samples. The relatively high levels of AhR active chemicals observed in the WSA samples tested here could potentially lead to adverse effects via the ability of these compounds to stimulate AhR-dependent expression of gene products such as cytochrome P4501A1, which can contribute to the metabolic activation of PAHs into their mutagenic form, as well as contribute to increased oxidative stress as a result of the production of reactive oxygen species as a byproduct of CYP1A1 metabolism of endogenous and exogenous chemicals (Park et al., 1996; Nebert et al., 200, 2004). Our results are also fairly consistent with the previous observation that WSA has a relative carcinogenesis potency of $1 - 6 \times 10^{-4}$ compared to pure benzo(a)pyrene (Lewtas, 2007), another AhR ligand with well-recognized adverse health effects, although the lack of information about the specific wood fuels and burn conditions used in that study do not allow direct comparisons to the WSA results presented here.

The ER activity assay results demonstrate the presence of relatively low levels of endocrine active chemicals (EACs) or low potency EACs in WSA to which inhalation exposure could occur. WSA exposure risk would need to take into account a variety of aspects, including the ambient dose and the physicochemical characteristics and metabolic stability of the responsible EACs. In terms of ecological risk, the concentration of WSA chemicals from partitioning into water would be expected to be low, and thus it would be unlikely to produce endocrine effects in wildlife from this route. In terms of exposure risk to humans, the comparison is challenging because the concentrations of known EACs are not as widely measured in atmospheric aerosols as

the “usual suspects” like PAHs, and many EACs still remain to be identified. Additionally, the ability of a chemical to act as an EAC in vitro does not address whether it can produce adverse endocrine-related health effects in vivo (i.e. whether it acts as an endocrine disruptor chemical (EDC)). In an indoor environment the WSA concentration can be higher than outdoors, but the exposure from using cookstoves is not as sustained over many hours or days such as that which occurs with a wildfire, and is not nearly as continual as with exposure to ER-active chemicals from consumer or industrial products. It’s possible that risks from WSA exposure may be comparable to other EACs/EDCs of concern in some situations.

Despite dissimilarities in chemical composition, it can be instructive to compare the total AhR and ER activity of smoldering WSA to those measured for ambient particulate matter. Utilizing similar cell-based bioassays, PM₁ collected from rural and urban traffic sites in Switzerland was found to have AhR activity of $0.5 - 2 \times 10^{-6}$ g TCDD EQs/g PM and ER activity of $2 - 23 \times 10^{-9}$ g E2 EQs/g PM (Wenger et al., 2009a; Wenger et al., 2009b). Similarly, PM₁₀ collected from downtown Toronto, Canada was found to have AhR activity of $0.04 - 1 \times 10^{-6}$ g TCDD EQs/g PM and ER activity of $\sim 10^{-6}$ g E2 EQs/g PM (Clemons et al., 1998). PM of various size fractions from different polluted sites in the Czech Republic had AhR activity of $0.001 - 1 \times 10^{-6}$ g TCDD EQs/g PM and ER activity of $0.1 - 20 \times 10^{-9}$ g E2 EQs/g PM (Novák et al., 2014). Organic PM in Wuhan, China was found to have ER activity of $\sim 2 - 8 \times 10^{-7}$ g E2 EQs/g, depending on whether the PM was collected on sunny or foggy days (Wang et al., 2004). In comparison, the AhR activities of smoldering WSA in this work are within the range of PM from urban and industrial sites, while the ER activities are similar to some types of urban/industrial PM but a factor of 10^{2-3} lower than others. Wenger et al. (2009) also found the total concentration of AhR agonists to be much higher than concentrations for the traditional AhR agonists such as PCDD/Fs, suggesting a diversity of AhR-active ligands in ambient PM and further supporting the notion that AhR can bind and be activated by a wide range of structurally diverse chemicals in the environment (Denison and Nagy, 2003; DeGroot et al., 2011; Stejskalova et al., 2011). Furthermore, it has been reported that PM_{2.5} exposure can affect sperm development in humans (Wu et al., 2017; Lao et al., 2018), particularly in men who were exposed to wintertime air pollution where WSA is high (Selevan et al., 2000), however, whether ER- and/or AhR-active chemicals present in smoldering WSA could contribute to these endocrine effects remains an open question.

The relative biological effects of WSA from different woods is a novel insight from this study to the best of our knowledge. From **Table 1**, it appears that the WSA extracts that are highly active in the AhR bioassay do not necessarily kill cells, and vice versa. In fact, we found that the cell toxicity and AhR activity of woodsmoke WSA were negatively correlated with a fairly strong adjusted R² coefficient of 0.74 (**Fig. S5a**). This suggests that the smoldering WSA analyzed in these bioassays contain compounds whose cytotoxic activity is not AhR mediated, but may be classified among the myriad other AhR active chemicals that have been identified (Denison and Nagy, 2003; Galati and O'brien, 2004; Nguyen and Bradfield, 2007; DeGroot et al., 2011). We found that the biological effects of WSA have a moderate (R² > 0.5) relationship with the percent by mass of the wood fuel that has been burned in a set duration of time (**Fig. 2**), which may be related to the lignin content and solvent-soluble monomers in the fuel (White, 2007). As all WSA effects have been normalized by mass, this indicates that the

280 biological properties may be related to the degree of oxidation/degradation of the woods during the smoldering process. That said, we found no relationship between aerosol properties and the O:C ratio of the WSA compounds. This may be because even oxidative processes can fragment molecules in the wood in addition to functionalizing certain molecules with oxygenated moieties. This interesting relationship should be further explored with more focused studies.

The MAC values for different WSA in this work are within range of organic-rich brown carbon (Updyke et al., 2012) and
285 particulate matter from a smoldering fire (Patterson and McMahon, 1984), but lower than ambient brown carbon likely because ~ 90% of that absorption comes from elemental carbon (Washenfelder et al., 2015). The MAC for the extracts in our study may also be lower than those extracted in less-polar solvents such as acetone (Chen and Bond, 2010). Within the limited fuel types employed in this work, there does not appear to be an obvious correlation between MAC_{vis} and wood hardness or percent
290 chemistry to form chromophoric constituents in the combustion. Furthermore, the MAC_{vis} values do not correlate to either cell toxicity (**Fig. S5b**, adj. R^2 0.03) or AhR activity (**Fig. S5c**, adj. R^2 -0.06), suggesting that chromophoric species in this work (e.g., specific conjugated compounds, charge transfer complexes, etc.) are not necessarily those producing these effects. In contrast, specific classes of chromophores from atmospheric aerosols in China have been found to have oxidative potential based on a chemical assay, which were suggested to be due to their PAH-like, quinone-like, or metallic constituents (Chen et
295 al., 2019).

3.2. Molecular composition of WSA and correlations to aerosol properties

The chemical composition of aerosols from the oxygen-poor smoldering combustion or oxygen-free pyrolysis of lignocellulose material such as wood has been the subject of extensive study (Edey and Richards, 1991; Simoneit et al., 1993; McKenzie et al., 1994; Ingemarsson et al., 1998; Simoneit et al., 2000; Oros and Simoneit, 2001a, b; Simoneit, 2002; Hosoya et al., 2007b;
300 Nunes et al., 2010), with many of the previous works focusing on the mid- to low-polarity constituents that can be analyzed by GC-MS. Low-intensity combustion abundantly forms phenolic derivatives with hydroxyphenyl (H), guaiacyl (G), and syringyl (S) units from the breakdown of lignin. Furan derivatives (e.g., furfurals), sugar anhydrides (e.g., levoglucosan, mannosan, galactosan), and other products are formed from the combustion of cellulose under a variety of conditions (Shafizadeh and Fu, 1973; Simoneit et al., 1999). PAHs are not expected to be formed at the 330 °C combustion temperature
305 in this work (Rhee and Bratzler, 1968; Sharma and Hajaligol, 2003), and indeed the GC-MS analysis using ethyl acetate solvent confirmed that PAHs were not observed above the detection limit (**Table S1**). If formed, PAHs might have ended up in tar-like material as opposed to the aerosols that were collected and tested. Thus, the biological activity and light absorption of the smoldering WSA in this work are not likely due to PAHs. However, we observed molecular formulas that could be assigned to PAH-like compounds (**Fig. 4**) from lignin decomposition. The GC-MS analysis identified sugar anhydrides, phenolic
310 compounds, and alkane derivatives in the mid- to low-polarity fraction of the smoldering WSA (**Fig. S6, Table S1**), consistent with previous reports.

Figure 3 shows the positive ion mode HRMS spectra of WSA extracts, highlighting the more abundant constituents in the polar, lower-volatility fraction. MSⁿ analyses support that the majority of smoldering WSA compounds are phenolic species (e.g., CH₃OH losses, H₂O losses, and phenyl ionic fragments) that have a variety of carbonyl, alcohol, alkenyl, acid, and other
315 moieties. There are 300 – 400 peaks in each spectrum that are both over the limit of detection and that can be assigned to a molecular formula within 2 ppm mass accuracy. There are more than 700 unique peaks observed in all samples.

Figure 4 shows the chemical structures of select observed compounds. The compound with the highest abundance in most samples was sinapaldehyde (C₁₁H₁₂O₄, **Fig. 3** green), except for the coniferous softwoods (Pine/Redwood) where coniferaldehyde (C₁₀H₁₀O₃, **Fig. 3** blue) was the highest peak. This is consistent with the fact that coniferyl alcohol is the main
320 polymer building block of softwood lignin, while sinapyl alcohol (to a higher extent) and coniferyl alcohol are both important building blocks of hardwood lignin (Graglia et al., 2015). We did not observe high abundance of hydroxyphenyl (H) derivatives, (e.g., coumaraldehyde is ~ 25 times less abundant than sinapaldehyde on average) which is consistent with the fact that coumaryl alcohol is the dominant lignin building block in grasses instead of wood (Himmelsbach and Barton, 1980). Levoglucosan (and its isomeric sugar anhydrides, C₆H₁₀O₅, **Fig. 3** magenta) was also abundantly observed in HRMS, with the
325 largest signal in Redwood WSA, alongside its decomposition products such as furfural, hydroxymethylfurfural, tetrahydrofuran derivatives, and others (Hosoya et al., 2007a; Lin et al., 2009).

High-molecular weight compounds that were observed are tentatively assigned to dimers from phenolic G and S units building blocks with various linkages (**Fig. 4**, bottom) according to previous observations (Goñi and Hedges, 1992; van der Hage et al., 1994; Guillén and Ibargoitia, 1999; Christensen et al., 2017), mechanistic feasibility (Beste, 2014), and MSⁿ evidence where
330 available. Radical chemistry of the lignin formation and combustion is probabilistic, such that the diversity of isomers increases with molecular mass, so there are likely multiple structures possible for each larger molecular formula. For example, C₁₄H₁₄O₄ is assigned to 5,5'-diguaiacol based on its C₇H₈O₂ guaiacol neutral loss fragment but concurrent losses of CO and C₂-C₃ fragments indicate the presence of other species with the same elemental makeup. Many of the proposed dimer assignments can be rationalized with linkages that are already present in the wood itself (e.g., β-O-4, β-β, β-5, 5-5', (Watts et al., 2011)),
335 suggesting that simple depolymerization of the lignin plays an important role in forming aerosol-phase species, similarly to pyrolysis. Attempts to perform MSⁿ on most high-molecular-weight peaks were inconclusive due to the higher density of accurate-mass peaks at each m/z that provided a challenge for their isolation by the ion trap. Chemical assignments without associated MSⁿ study in this work should be treated as purely speculative. A representative MS² spectrum and proposed fragmentation loss pathways are shown in **Figure S7**. The full list of common ions, regardless of signal or correlations, is
340 shown in **Table S2**.

We then performed linear least-squares correlations of the accurate-mass m/z peaks with the aerosol properties of cell toxicity, AhR activity, and visible light absorption (MAC_{vis}) for each WSA sample. A potential concern is that HRMS signals in complex mixtures can suffer from matrix effects so that the signal is not necessarily representative of concentration; however,

we found the HRMS signals are strongly correlated with GC-MS signals (e.g., sinapaldehyde $[M+H]^+$ $m/z = 209.081$, GC retention time 16.6 minutes, has adj. $R^2 = 0.81$, **Fig. S8**), suggesting that the matrix is similar enough between the different samples that correlations using HRMS are likely meaningful. Peaks are required to be present in 8 out of 9 samples for the statistical analysis. **Table 2** shows the correlation results, the m/z and neutral molecular formulas, neutral or radical loss fragments derived from CID, and proposed assignments for select peaks based on the MS^2 evidence when available, literature previously cited in this article, and guidance from GC-MS observations (**Table S1**). 90% of the correlations shown in **Table 2** have p-values ranging from 0.0002 to 0.05, while 100% have $p < 0.1$. This suggests that the correlations have moderate-to-strong evidence against coincidence.

The occurrence of structural isomers is a limitation that may confound the statistics in this work, especially if those isomeric compounds have opposing effects on bioactivity or light absorption. With those caveats in mind, we observed a number of moderate-to-strong correlations with exact m/z peaks, either with a positive or negative effect, for the three aerosol properties examined. A positive effect means that the signal of the peak directly correlates (higher signal = lower cell toxicity EC_{50} , higher AhR activity, higher MAC_{vis}) and a negative effect means anti-correlation, neither of which is necessarily causative. For example, levoglucosan was found to be anti-correlated with MAC_{vis} (**Fig. 5**, $R^2 = 0.75$) and we interpret this to mean that lignin derivatives are more likely responsible for visible light absorption because of their highly-conjugated structures versus cellulose derivatives (**Fig. 4**), so when a wood has more cellulose content (producing more levoglucosan), the MAC_{vis} decreases. Also, for example, we found the m/z of vanillin to be somewhat correlated with AhR activity ($R^2 = 0.45$), and even though vanillin itself is not AhR active, Bartonkova and Dvorak (2018) found that the complex mixture of vanilla is highly AhR active, postulating that the AhR activity of the vanilla mixture is caused by minor constituent(s) ($< 10\%$). Similarly, our correlation of vanillin with AhR activity may be due to vanillin's interaction or co-formation with other constituents in the WSA extract.

The cell toxicity correlations appears to be mainly driven by C_{11} compounds, some of which are syringyl derivatives. We found a positive effect of sinapaldehyde and sinapyl alcohol on cell toxicity, and possibly for related compounds such as $C_{11}H_{14}O_5$ that is tentatively assigned to be sinapyl hydroperoxide. The hydroperoxide assignment is based on the facile H_2O loss (MacMillan and Murphy, 1995) with lack of $HCOOH$, and a feasible mechanism of formation, e.g., C-O cleavage of sinapyl alcohol in a heated oxidative environment to form the R radical (Beste, 2014) that can add O_2 and then form the $ROOH$ through reaction with HO_2 or other RH (Atkinson, 2000). This is somewhat consistent with sinapaldehyde's strong effect on inhibiting the growth of bacterial cells, while other phenolic compounds like vanillin and syringaldehyde had no effect (Figueiredo et al., 2008). Similarly syringaldehyde and vanillin had no effect in our cell toxicity assay. The potential toxicity of monolignols like sinapyl alcohol has been noted in plants (Whetten and Sederoff, 1995), and while we would expect that coniferyl alcohol may have a similar effect, no correlation was observed. Among other factors, this could be due to isomeric compounds present at the coniferyl alcohol m/z , including an acid ($HCOOH$ loss) and aldehyde (CO loss), compared to the sinapyl alcohol peak that

did not have these interferences. Another positively correlated molecular formula is $C_{14}H_{16}O_2$ ($R^2 = 0.74$) that appears to belong to compounds with quinone, furfuryl alcohol, and other substructures in the WSA based on fragmentation patterns so it is not clear which compounds specifically affect cell toxicity. Quinones can be cytotoxic or cytoprotective depending on structure (Bolton and Dunlap, 2016) and furfuryl alcohol can be mildly immunotoxic (Franko et al., 2011); therefore, the correlation has mechanistic plausibility. We found that 5-hydroxymethylfurfural (HMF), an important decomposition product of cellulose, was anticorrelated with cell toxicity ($R^2 = 0.54$) for reasons that are unclear. HMF can be biologically active; however, at a dose that would be unfeasibly high for human exposure (~ 200 g based on the oral acute LD_{50} of 2.5 – 3.1 g/kg in rats (Hoydonckx et al., 2000)) and we would expect it to have no effect on cell toxicity in our assay. It is possible that HMF is anti-correlated because of its connection with levoglucosan, which is also anti-correlated but with a weaker relationship ($R^2 = 0.31$) and consequently not included in **Table 2**. If so, the interpretation would be similar to that for MAC_{vis} , i.e., a higher lignin/cellulose ratio in the wood may increase cell toxicity in the smoldering WSA.

In this study, compounds that correlate with AhR activity tend to have more carbons than the lignin monomers (mainly C_{14} - C_{19}) and more C=C unsaturation. These compounds are either formed in the combustion or exist naturally in wood, as wood dust itself has been shown to be AhR-active (Wilson et al., 2015). The calculated double bond equivalents (rings + π -bonds = DBE, (Badertscher et al., 2001)) are consistent with AhR active compounds having more unsaturation on average. DBEs for the positively-correlated compounds ($\langle DBE \rangle = 8.0$, max 11) are notably higher than those that are not correlated ($\langle DBE \rangle = 6.2$, max 11) and those that are anti-correlated ($\langle DBE \rangle = 5.6$, max 7). This explanation is an oversimplification, as double bonds and even aromaticity do not account for the specific electronic properties or the conformational planarity of the ligands that are key to effective binding with AhR (Denison et al., 2002; Petkov et al., 2010). If the C_{14} - C_{19} compounds are indeed lignin dimers, it is reasonable to postulate that the higher AhR activity is partially due to the ability of the dimers to form PAH-like structures from the radical reactions. For example, $C_{16}H_{14}O_4$ (**Fig 4** bottom right) is assigned to be (at least partially) a phenanthrene derivative generated from β -5 dimerization or radical depolymerization reactions and ring closure (Beste, 2014) and may be potent for induction of AhR – we found a fairly high correlation coefficient ($R^2 = 0.65$, **Fig. 5**). Similarly, other molecular formulas that can be assigned to a phenanthrene derivatives ($C_{18}H_{16}O_5$ and $C_{18}H_{16}O_6$) are also positively correlated with AhR activity (both $R^2 = 0.4$).

$C_{14}H_{12}O_3$ ($R^2 = 0.57$, positive effect for AhR and $R^2 = 0.34$, negative affect on cell toxicity (not shown on Table 2)) may be related to the naturally-occurring phenol resveratrol which is a dimer of H and dihydroxybenzene with a β -1 linkage. Resveratrol, found in wood in low amounts 0.017 – 0.271 g/kg, (Tyśkiewicz et al., 2019)) and other plant materials, has AhR antagonist activity and may be protective against dioxin (AhR-dependent) toxicity (Casper et al., 1999), consistent with the negative correlation observed here. The lower signal of this ion in our samples prevented a more-detailed MS^n study, so the assignment is tentative. However, since this molecule has only alcohol groups, the H_2O loss we observed in absence of CH_3OH , CO , or other labile groups does not contradict the assignment. Some smaller compounds were also positively correlated with

AhR activity, with the highest correlation for $C_{10}H_{10}O_2$ ($R^2 = 0.74$), assigned to methoxy cinnamaldehyde based on its relatively-clean MS^2 spectrum. The interaction of methoxy cinnamaldehyde with the AhR-responsive gene product CYP1A1 results in its oxidation into an acid (Hasegawa et al., 2002), and it appears to be mainly protective (Cope, 2019). This would be consistent with the observed anti-correlation of this product with cell toxicity ($R^2 = 0.42$).

Roughly 90% of the correlations with MAC_{vis} are positive in nature and the positively-correlated compounds are fairly diverse, but many have conjugated structures. The conjugation that is observed for lignin phenols (DBE ~ 5), and even for the observed PAH-like compounds, are insufficient to absorb visible light; however, when relatively-small lignin phenols are deprotonated in solution, they absorb light in the visible range due to the resonance stabilization of the phenolates – the red shift is much more pronounced for phenols with extra conjugation such as sinapaldehyde (Panossian et al., 2001). Our solution is not sufficiently basic (pH ~ 5) for the deprotonated form to substantially exist in equilibrium (e.g., pKa for sinapaldehyde is 8.2, coniferaldehyde is 7.98, vanillin is 7.4, and bivanillin is 6.16, (Ragnar et al., 2000); however, localized charge-transfer interactions may facilitate the deprotonation of phenols at pH much lower than their pKa (Abramovitz and Massey, 1976). It is not clear why sinapaldehyde and coniferaldehyde do not correlate with MAC_{vis} , but vanillylidene acetone with its additional sigma carbon does. Vanillylidene acetone can achieve some additional resonance with its keto-enol tautomerization (which tends not to happen in the ring because the aromatic phenol is highly favored) while sinapaldehyde and coniferaldehyde cannot. Even so, many of the correlations are not easily understood and could be due to coincidence or driven by unassigned isomers. In the ambient, nitrophenols may significantly contribute to wood-burning brown carbon (Mohr et al., 2013; Lin et al., 2017). In this work, these nitrophenols were not observed by GC-MS, so the mechanism of light-absorption is likely different. It is possible that charge-transfer complexes between neighboring OH and C=O in dimers (e.g., $C_{18}H_{18}O_6$, **Fig. 4**) may be chromophoric, as suggested previously for brown carbon aerosols (Phillips and Smith, 2014). The phenols may also potentially form intermolecular complexes with proton acceptors such as carbonyls or heterocyclic nitrogen species (e.g., $C_9H_{11}NO_4$ with a pyridine-like (C_3H_5NO) loss fragment), as the aerosols species are in close proximity. While no four-ring PAH-like species that would absorb in the visible range (Samburova et al., 2016) were observed in this work, we can't rule out the possibility that highly-conjugated compounds below the detection limit can contribute to light absorption in combination with other chromophores. For the compounds that are correlated with MAC_{vis} , it is likely that they need to be activated to the ionic form to be chromophoric.

Finally, although composition characterization was not the main focus of this work, we observed some fairly abundant compounds that have not been previously reported. For example, we identified some organic nitrogen compounds as unknown pyridine derivatives (e.g., $C_9H_{11}NO_3$) and nitro or nitrate derivatives (e.g., $C_5H_{10}N_2O_8$), although in general, organic nitrogen is a larger fraction of ambient biomass burning aerosols (Laskin et al., 2009; Lin et al., 2016) than in this study. Poplar WSA also has high abundance peaks that have not been previously observed, e.g., corresponding to the molecular formula $C_{20}H_{21}NO_3$ (**Fig. 3**, dark yellow). Due to the high signal, we assigned $C_{20}H_{21}NO_3$ to one or more naturally-occurring alkaloids as opposed

440 to being formed from dimerization processes of phenols (plausible monomers should have higher signals than dimers). However, alkaloids that have been extracted from poplar heartwood with the same molecular formula (Chen-Loung et al., 1976; Cordell et al., 1989) do not appear to be entirely consistent with the MS² fragmentation patterns of C₂₀H₂₁NO₃ in this work (neutral losses CH₃OH, C₃H₆O₂, and C₃H₉NO₃), suggesting that this compound may be different than previously-
445 low EC₅₀ value in our cell toxicity study, which is consistent with the higher cell toxicity and genotoxicity response of combustion aerosols from Poplar compared to softwood pellets in residential boilers (Kasurinen et al., 2016). Unfortunately, since other types of woods were not studied by Kasurinen and colleagues (2016), a more thorough comparison can not be made. As the HRMS correlations require the peaks to be present in most samples for adequate statistics, it is not clear whether the properties of the Poplar or other WSA are associated with the uniqueness of their composition rather than commonalities.

450 **4. Conclusions**

The composition of smoldering WSA generated in the conditions of this work produced abundant lignin and cellulose oxidation and decomposition products that impact aerosol properties in ways that are not easily predictable. We showed that the components of smoldering WSA have high biological activity that can substantially contribute to the environmental health burden of woodsmoke, and that these health-related effects are not likely PAH-mediated for the smoldering conditions used
455 in this work. The observed bioactivity may be linked to the percent of the fuel that has been burned, and thus to the degree of combustion, with more toxic aerosols formed at earlier stages of the burn. It is possible that the more toxic compounds are eventually degraded during the combustion process. These results underscore the importance of untargeted analyses to move beyond well-studied toxicants when considering organic aerosol properties, as the statistical studies identified multiple targets for further toxicological testing. We found that lignin phenols are correlated with visible light absorption (i.e., levoglucosan is
460 anti-correlated) and hypothesize that the mechanism of action is through charge transfer reactions to form phenolates. In atmospheric aerosols, phenolates have been suggested to contribute substantially to brown carbon absorption as facilitated by their charge-transfer interactions (Phillips et al., 2017). The lignin percent of wood may also drive toxicity effects, but this remains to be explored. Although some mechanistically-probable correlations with bioactivity and light absorption are found in this work, the potential correlations are possibly obscured by isomeric interference at some masses. Future work should add
465 a separation component to the accurate-mass and MSⁿ analysis of WSA for additional clarity. This information will help understand the contributions of individual components and enhance the value of testing such complex mixtures.

5. Data Availability

Data are available from the corresponding author upon request.

6. Competing interests

470 The authors declare no competing financial interests.

7. Author Contributions

TBN and KQN designed the experiments, LKC and KQN carried out the experiments. All authors contributed original data and data analyses. LKC, KQN, and TBN prepared the draft manuscript. All co-authors have reviewed and edited the manuscript.

475 8. Acknowledgements

This work was partially supported by the National Science Foundation grant (AGS1656889) and a Superfund Research Grant from the National Institute of Environmental Health Sciences (P42ES004699).

References

- 480 Abramovitz, A. S., and Massey, V.: Interaction of phenols with old yellow enzyme. Physical evidence for charge-transfer complexes, *Journal of Biological Chemistry*, 251, 5327-5336, 1976.
- Adetona, O., Dunn, K., Hall, D. B., Achtemeier, G., Stock, A., and Naeher, L. P.: Personal pm_{2.5} exposure among wildland firefighters working at prescribed forest burns in southeastern united states, *Journal of occupational and environmental hygiene*, 8, 503-511, 2011.
- Allen-Hoffmann, B. L., and Rheinwald, J. G.: Polycyclic aromatic hydrocarbon mutagenesis of human epidermal keratinocytes in culture, *Proc. Nat. Acad. Sci.*, 81, 7802-7806, 1984.
- 485 Alves, C., Vicente, A., Nunes, T., Gonçalves, C., Fernandes, A. P., Mirante, F., Tarelho, L., de la Campa, A. M. S., Querol, X., and Caseiro, A.: Summer 2009 wildfires in portugal: Emission of trace gases and aerosol composition, *Atmos. Environ.*, 45, 641-649, 2011.
- Andreae, M. O., and Gelencser, A.: Black carbon or brown carbon? The nature of light-absorbing carbonaceous aerosols, *Atmos. Chem. Phys.*, 6, 3131-3148, 10.5194/acp-6-3131-2006, 2006.
- 490 Andreae, M. O., and Merlet, P.: Emission of trace gases and aerosols from biomass burning, *Global biogeochemical cycles*, 15, 955-966, 2001.
- Atkinson, R.: Atmospheric chemistry of vocs and nox, *Atmos. Environ.*, 34, 2063-2101, 2000.
- Badertscher, M., Bischofberger, K., Munk, M. E., and Pretsch, E.: A novel formalism to characterize the degree of unsaturation of organic molecules, *Journal of Chemical Information and Computer Sciences*, 41, 889-893, 10.1021/ci000135o, 2001.
- 495 Barron, M. G., Heintz, R., and Rice, S. D.: Relative potency of pahs and heterocycles as aryl hydrocarbon receptor agonists in fish, *Marine Environmental Research*, 58, 95-100, 2004.
- Baston, D. S., and Denison, M. S.: Considerations for potency equivalent calculations in the ah receptor-based calux bioassay: Normalization of superinduction results for improved sample potency estimation, *Talanta*, 83, 1415-1421, 2011.
- Beardsell, I., Bell, S., Robinson, S., and Rumbold, H.: *Mcm part a: Mcqs*, Royal Society of Medicine Press, 2009, 2009.
- 500 Bertschi, I., Yokelson, R. J., Ward, D. E., Babbitt, R. E., Susott, R. A., Goode, J. G., and Hao, W. M.: Trace gas and particle emissions from fires in large diameter and belowground biomass fuels, *J. Geophys. Res.*, 108, 2003.
- Beste, A.: Reaxff study of the oxidation of lignin model compounds for the most common linkages in softwood in view of carbon fiber production, *J. Phys. Chem. A*, 118, 803-814, 2014.
- 505 Billiard, S. M., Timme-Laragy, A. R., Wassenberg, D. M., Cockman, C., and Di Giulio, R. T.: The role of the aryl hydrocarbon receptor pathway in mediating synergistic developmental toxicity of polycyclic aromatic hydrocarbons to zebrafish, *Toxicological Sciences*, 92, 526-536, 2006.
- Bølling, A. K., Pagels, J., Yttri, K. E., Barregard, L., Sallsten, G., Schwarze, P. E., and Boman, C.: Health effects of residential wood smoke particles: The importance of combustion conditions and physicochemical particle properties, *Particle and fibre toxicology*, 6, 29, 2009.

- Bølling, A. K., Totlandsdal, A. I., Sallsten, G., Braun, A., Westerholm, R., Bergvall, C., Boman, J., Dahlman, H. J., Sehlstedt, M., and Cassee, F.: Wood smoke particles from different combustion phases induce similar pro-inflammatory effects in a co-culture of monocyte and pneumocyte cell lines, *Particle and fibre toxicology*, 9, 45, 2012.
- 510 Bolton, J. L., and Dunlap, T.: Formation and biological targets of quinones: Cytotoxic versus cytoprotective effects, *Chemical research in toxicology*, 30, 13-37, 2016.
- Boman, B. C., Forsberg, A. B., and Järholm, B. G.: Adverse health effects from ambient air pollution in relation to residential wood combustion in modern society, *Scandinavian journal of work, environment & health*, 29, 251-260, 2003.
- 515 Brennan, J. C., Bassal, A., He, G., and Denison, M. S.: Development of a recombinant human ovarian (bg1) cell line containing estrogen receptor α and β for improved detection of estrogenic/antiestrogenic chemicals, *Environmental toxicology and chemistry*, 35, 91-100, 2016.
- Burns, R. M., and Honkala, B. H.: *Silvics of north america*, United States Department of Agriculture Washington, DC, 1990.
- Carey, D. G., Schwarz, L. A., Pliego, G. J., and Raymond, R. L.: Respiratory rate is a valid and reliable marker for the anaerobic threshold: Implications for measuring change in fitness, *Journal of sports science & medicine*, 4, 482, 2005.
- 520 Casper, R. F., Quesne, M., Rogers, I. M., Shiota, T., Jolivet, A., Milgrom, E., and Savouret, J.-F.: Resveratrol has antagonist activity on the aryl hydrocarbon receptor: Implications for prevention of dioxin toxicity, *Molecular pharmacology*, 56, 784-790, 1999.
- Chen-Loung, C., Hou-Min, C., and Cowling, E. B.: Aporphine alkaloids and lignans in heartwood of *liriodendron tulipifera*, *Phytochemistry*, 15, 547-550, [https://doi.org/10.1016/S0031-9422\(00\)88970-0](https://doi.org/10.1016/S0031-9422(00)88970-0), 1976.
- 525 Chen, Q., Wang, M., Wang, Y., Zhang, L., Li, Y., and Han, Y.: Oxidative potential of water-soluble matter associated with chromophoric substances in pm2.5 over xi'an, china, *Environ. Sci. Technol.*, 53, 8574-8584, 10.1021/acs.est.9b01976, 2019.
- Chen, Y., and Bond, T. C.: Light absorption by organic carbon from wood combustion, *Atmos. Chem. Phys.*, 10, 1773-1787, 10.5194/acp-10-1773-2010, 2010.
- 530 Chowdhury, Z., Le, L. T., Masud, A. A., Chang, K. C., Alauddin, M., Hossain, M., Zakaria, A., and Hopke, P. K.: Quantification of indoor air pollution from using cookstoves and estimation of its health effects on adult women in northwest bangladesh, *Aerosol Air Qual Res*, 12, 463-475, 2012.
- Christensen, E., Evans, R. J., and Carpenter, D.: High-resolution mass spectrometric analysis of biomass pyrolysis vapors, *Journal of analytical and applied pyrolysis*, 124, 327-334, 2017.
- 535 Cipolletti, M., Solar Fernandez, V., Montalesi, E., Marino, M., and Fiocchetti, M.: Beyond the antioxidant activity of dietary polyphenols in cancer: The modulation of estrogen receptors (ers) signaling, *Int J Mol Sci*, 19, 10.3390/ijms19092624, 2018.
- Clemons, J. H., Allan, L. M., Marvin, C. H., Wu, Z., McCarry, B. E., Bryant, D. W., and Zacharewski, T. R.: Evidence of estrogen- and tcdd-like activities in crude and fractionated extracts of pm10 air particulate material using in vitro gene expression assays, *Environ. Sci. Technol.*, 32, 1853-1860, 10.1021/es971124n, 1998.
- Cope, R. B.: Toxicology and drug interactions of nutraceuticals, in: *Nutraceuticals in veterinary medicine*, Springer, 711-727, 2019.
- 540 Cordell, G. A., Southon, I. W., and Buckingham, J.: *Dictionary of alkaloids*, Chapman and Hall, 1989.
- Cupitt, L. T., Glen, W. G., and Lewtas, J.: Exposure and risk from ambient particle-bound pollution in an airshed dominated by residential wood combustion and mobile sources, *Environmental health perspectives*, 102, 75-84, 1994.
- Danielsen, P. H., Møller, P., Jensen, K. A., Sharma, A. K., Wallin, H. k., Bossi, R., Autrup, H., Mølhave, L., Ravanat, J.-L., and Briedé, J. J.: Oxidative stress, DNA damage, and inflammation induced by ambient air and wood smoke particulate matter in human a549 and thp-1 cell lines, *Chemical research in toxicology*, 24, 168-184, 2011.
- 545 DeGroot, D., He, G., Fracalvieri, D., Bonati, L., Pandini, A., and Denison, M. S.: Ahr ligands: Promiscuity in binding and diversity in response, *The Ah receptor in biology and toxicology*, 63-79, 2011.
- Denison, M., and Heath-Pagliuso, S.: The ah receptor: A regulator of the biochemical and toxicological actions of structurally diverse chemicals, *Bulletin of environmental contamination and toxicology*, 61, 557-568, 1998.
- 550 Denison, M. S., and Nagy, S. R.: Activation of the aryl hydrocarbon receptor by structurally diverse exogenous and endogenous chemicals, *Annual review of pharmacology and toxicology*, 43, 309-334, 2003.
- Denison, M. S., Pandini, A., Nagy, S. R., Baldwin, E. P., and Bonati, L.: Ligand binding and activation of the ah receptor, *Chemico-biological interactions*, 141, 3-24, 2002.
- 555 Denison, M. S., Soshilov, A. A., He, G., DeGroot, D. E., and Zhao, B.: Exactly the same but different: Promiscuity and diversity in the molecular mechanisms of action of the aryl hydrocarbon (dioxin) receptor, *Toxicological sciences*, 124, 1-22, 2011.
- Edye, L. A., and Richards, G. N.: Analysis of condensates from wood smoke. Components derived from polysaccharides and lignins, *Environ. Sci. Technol.*, 25, 1133-1137, 1991.
- Einfeld, W., Ward, D. E., and Hardy, C.: Effects of fire behavior on prescribed fire smoke characteristics: A case study [chapter 50], In: Levine, Joel S., ed. *Global biomass burning: Atmospheric, climatic, and biospheric implications*. Cambridge, MA: MIT Press. p. 412-419., 412-419, 1991.
- 560 EPA: Air quality criteria for particulate matter, fourth external review draft, OFFICE OF RESEARCH AND DEVELOPMENT, NCFEA, editor. EPA/600/p-99/002aD and bD. Research Triangle Park, NC: US EPA, 2003.

- Ezzati, M., and Kammen, D. M.: The health impacts of exposure to indoor air pollution from solid fuels in developing countries: Knowledge, gaps, and data needs, *Environmental health perspectives*, 110, 1057-1068, 2002.
- 565 Figueiredo, A. R., Campos, F., de Freitas, V., Hogg, T., and Couto, J. A.: Effect of phenolic aldehydes and flavonoids on growth and inactivation of *oenococcus oeni* and *lactobacillus hilgardii*, *Food Microbiology*, 25, 105-112, 2008.
- Flannigan, M., and Harrington, J.: A study of the relation of meteorological variables to monthly provincial area burned by wildfire in Canada (1953–80), *Journal of Applied Meteorology*, 27, 441-452, 1988.
- 570 Fleming, L. T., Lin, P., Laskin, A., Laskin, J., Weltman, R., Edwards, R. D., Arora, N. K., Yadav, A., Meinardi, S., and Blake, D. R.: Molecular composition of particulate matter emissions from dung and brushwood burning household cookstoves in Haryana, India, *Atmos. Chem. Phys.*, 18, 2461-2480, 2018.
- Franko, J., Jackson, L. G., Hubbs, A., Kashon, M., Meade, B., and Anderson, S. E.: Evaluation of furfuryl alcohol sensitization potential following dermal and pulmonary exposure: Enhancement of airway responsiveness, *Toxicological Sciences*, 125, 105-115, 2011.
- 575 Galati, G., and O'Brien, P. J.: Potential toxicity of flavonoids and other dietary phenolics: Significance for their chemopreventive and anticancer properties, *Free Radical Biology and Medicine*, 37, 287-303, 2004.
- Goñi, M. A., and Hedges, J. I.: Lignin dimers: Structures, distribution, and potential geochemical applications, *Geochim. Cosmochim. Acta*, 56, 4025-4043, 1992.
- Gorin, C. A., Collett Jr, J. L., and Herckes, P.: Wood smoke contribution to winter aerosol in Fresno, CA, *Journal of the Air & Waste Management Association*, 56, 1584-1590, 2006.
- 580 Graglia, M., Kanna, N., and Esposito, D.: Lignin refinery: Towards the preparation of renewable aromatic building blocks, *ChemBioEng Reviews*, 2, 377-392, 2015.
- Guillén, M. D., and Ibargoitia, M. L.: GC/MS analysis of lignin monomers, dimers and trimers in liquid smoke flavourings, *Journal of the Science of Food and Agriculture*, 79, 1889-1903, 1999.
- 585 Hasegawa, A., Yoshino, M., Nakamura, H., Ishii, I., Watanabe, T., Kiuchi, M., Ishikawa, T., Ohmori, S., and Kitada, M.: Identification of inhibitory component in cinnamom—o-methoxycinnamaldehyde inhibits cyp1a2 and cyp2e1—, *Drug metabolism and pharmacokinetics*, 17, 229-236, 2002.
- He, G., Zhao, J., Brennan, J. C., Affatato, A. A., Zhao, B., Rice, R. H., and Denison, M. S.: Cell-based assays for identification of aryl hydrocarbon receptor (ahr) activators, in: *Optimization in drug discovery*, Springer, 221-235, 2014.
- 590 Hedberg, E., Kristensson, A., Ohlsson, M., Johansson, C., Johansson, P.-Å., Swietlicki, E., Vesely, V., Wideqvist, U., and Westerholm, R.: Chemical and physical characterization of emissions from birch wood combustion in a wood stove, *Atmos. Environ.*, 36, 4823-4837, 2002.
- Himmelsbach, D. S., and Barton, F. E.: Carbon-13 nuclear magnetic resonance of grass lignins, *Journal of agricultural and food chemistry*, 28, 1203-1208, 1980.
- 595 Hosoya, T., Kawamoto, H., and Saka, S.: Cellulose–hemicellulose and cellulose–lignin interactions in wood pyrolysis at gasification temperature, *Journal of Analytical and Applied Pyrolysis*, 80, 118-125, <https://doi.org/10.1016/j.jaap.2007.01.006>, 2007a.
- Hosoya, T., Kawamoto, H., and Saka, S.: Pyrolysis behaviors of wood and its constituent polymers at gasification temperature, *Journal of Analytical and Applied Pyrolysis*, 78, 328-336, <https://doi.org/10.1016/j.jaap.2006.08.008>, 2007b.
- Hoydonckx, H., Van Rhijn, W., Van Rhijn, W., De Vos, D., and Jacobs, P.: Furfural and derivatives, *Ullmann's Encyclopedia of Industrial Chemistry*, 2000.
- 600 Ingemarsson, Å., Nilsson, U., Nilsson, M., Pedersen, J. R., and Olsson, J. O.: Slow pyrolysis of spruce and pine samples studied with GC/MS and GC/FIR/FID, *Chemosphere*, 36, 2879-2889, 1998.
- Irulegi, O., Serra, A., and Hernández, R.: Data on records of indoor temperature and relative humidity in a university building, *Data in brief*, 13, 248-252, 2017.
- 605 Kasurinen, S., Jalava, P. I., Uski, O., Happonen, M. S., Brunner, T., Mäki-Paakkanen, J., Jokiniemi, J., Obernberger, I., and Hirvonen, M.-R.: Toxicological characterization of particulate emissions from straw, miscanthus, and poplar pellet combustion in residential boilers, *Aerosol. Sci. Technol.*, 50, 41-51, [10.1080/02786826.2015.1121198](https://doi.org/10.1080/02786826.2015.1121198), 2016.
- Kendrick, E.: Mass scale based on $CH_2 = 14.0000$ for high-resolution mass spectrometry of organic compounds, *Anal. Chem.*, 35, 2146-2154, 1963.
- 610 Kind, T., and Fiehn, O.: Seven golden rules for heuristic filtering of molecular formulas obtained by accurate mass spectrometry, *BMC Bioinformatics*, 8, 105; doi:10.1186/1471-2105-1188-1105, 2007.
- Kirchstetter, T., and Thatcher, T.: Contribution of organic carbon to wood smoke particulate matter absorption of solar radiation, *Atmos. Chem. Phys.*, 12, 6067-6072, 2012.
- Kleeman, M. J., Riddle, S. G., Robert, M. A., Jakober, C. A., Fine, P. M., Hays, M. D., Schauer, J. J., and Hannigan, M. P.: Source apportionment of fine (PM₁₀) and ultrafine (PM_{0.1}) airborne particulate matter during a severe winter pollution episode, *Environ. Sci. Technol.*, 43, 272-279, 2008.
- 615 Krüger, T., Long, M., and Bonefeld-Jørgensen, E. C.: Plastic components affect the activation of the aryl hydrocarbon and the androgen receptor, *Toxicology*, 246, 112-123, <https://doi.org/10.1016/j.tox.2007.12.028>, 2008.

- Kubátová, A., Dronen, L. C., Picklo, M. J., and Hawthorne, S. B.: Midpolarity and nonpolar wood smoke particulate matter fractions deplete glutathione in raw 264.7 macrophages, *Chemical research in toxicology*, 19, 255-261, 2006.
- 620 Lao, X. Q., Zhang, Z., Lau, A. K., Chan, T.-C., Chuang, Y. C., Chan, J., Lin, C., Guo, C., Jiang, W. K., and Tam, T.: Exposure to ambient fine particulate matter and semen quality in taiwan, *Occup Environ Med*, 75, 148-154, 2018.
- Laskin, A., Smith, J. S., and Laskin, J.: Molecular characterization of nitrogen-containing organic compounds in biomass burning aerosols using high-resolution mass spectrometry, *Environ. Sci. Technol.*, 43, 3764-3771, 2009.
- 625 Lee, J. S., Lippman, S. M., Benner, S. E., Lee, J. J., Ro, J. Y., Lukeman, J. M., Morice, R. C., Peters, E. J., Pang, A. C., and Fritsche Jr, H. A.: Randomized placebo-controlled trial of isotretinoin in chemoprevention of bronchial squamous metaplasia, *Journal of Clinical Oncology*, 12, 937-945, 1994.
- Lewis, C. W., Baumgardner, R. E., Stevens, R. K., Claxton, L. D., and Lewtas, J.: Contribution of woodsmoke and motor vehicle emissions to ambient aerosol mutagenicity, *Environ. Sci. Technol.*, 22, 968-971, 1988.
- 630 Lewtas, J.: Air pollution combustion emissions: Characterization of causative agents and mechanisms associated with cancer, reproductive, and cardiovascular effects, *Mutation Research/Reviews in Mutation Research*, 636, 95-133, 2007.
- Li, Z., Zhang, H., Gibson, M., and Li, J.: An evaluation on combination effects of phenolic endocrine disruptors by estrogen receptor binding assay, *Toxicology in Vitro*, 26, 769-774, <https://doi.org/10.1016/j.tiv.2012.05.017>, 2012.
- Lin, P., Aiona, P. K., Li, Y., Shiraiwa, M., Laskin, J., Nizkorodov, S. A., and Laskin, A.: Molecular characterization of brown carbon in biomass burning aerosol particles, *Environ. Sci. Technol.*, 50, 11815-11824, 2016.
- 635 Lin, P., Bluvshstein, N., Rudich, Y., Nizkorodov, S. A., Laskin, J., and Laskin, A.: Molecular chemistry of atmospheric brown carbon inferred from a nationwide biomass burning event, *Environ. Sci. Technol.*, 51, 11561-11570, 2017.
- Lin, Y.-C., Cho, J., Tompsett, G. A., Westmoreland, P. R., and Huber, G. W.: Kinetics and mechanism of cellulose pyrolysis, *The Journal of Physical Chemistry C*, 113, 20097-20107, 10.1021/jp906702p, 2009.
- 640 Machala, M., Vondráček, J., Bláha, L., Cigánek, M., and Neča, J.: Aryl hydrocarbon receptor-mediated activity of mutagenic polycyclic aromatic hydrocarbons determined using in vitro reporter gene assay, *Mutation Research/Genetic Toxicology and Environmental Mutagenesis*, 497, 49-62, 2001.
- MacMillan, D. K., and Murphy, R. C.: Analysis of lipid hydroperoxides and long-chain conjugated keto acids by negative ion electrospray mass spectrometry, *Journal of the American Society for Mass Spectrometry*, 6, 1190-1201, [https://doi.org/10.1016/1044-0305\(95\)00505-6](https://doi.org/10.1016/1044-0305(95)00505-6), 1995.
- 645 Maga, J., and Chen, Z.: Pyrazine composition of wood smoke as influenced by wood source and smoke generation variables, *Flavour and fragrance journal*, 1, 37-42, 1985.
- Mandal, P. K.: Dioxin: A review of its environmental effects and its aryl hydrocarbon receptor biology, *Journal of Comparative Physiology B*, 175, 221-230, 2005.
- Mazzoleni, L. R., Zielinska, B., and Moosmüller, H.: Emissions of levoglucosan, methoxy phenols, and organic acids from prescribed burns, laboratory combustion of wildland fuels, and residential wood combustion, *Environ. Sci. Technol.*, 41, 2115-2122, 2007.
- 650 McKenzie, L. M., Hao, W. M., Richards, G. N., and Ward, D. E.: Quantification of major components emitted from smoldering combustion of wood, *Atmos. Environ.*, 28, 3285-3292, 1994.
- Menon, P.: Indoor spatial monitoring of combustion generated pollutants (tsp, co, and bap) by indian cookstoves, HAWAII UNIV HONOLULU DEPT OF METEOROLOGY, 1988.
- 655 Mohr, C., Lopez-Hilfiker, F. D., Zotter, P., Prévôt, A. S. H., Xu, L., Ng, N. L., Herndon, S. C., Williams, L. R., Franklin, J. P., Zahniser, M. S., Worsnop, D. R., Knighton, W. B., Aiken, A. C., Gorkowski, K. J., Dubey, M. K., Allan, J. D., and Thornton, J. A.: Contribution of nitrated phenols to wood burning brown carbon light absorption in detling, united kingdom during winter time, *Environ. Sci. Technol.*, 47, 6316-6324, 10.1021/es400683v, 2013.
- Moosmüller, H., Chakrabarty, R., Ehlers, K., and Arnott, W.: Absorption ångström coefficient, brown carbon, and aerosols: Basic concepts, bulk matter, and spherical particles, *Atmos. Chem. Phys.*, 11, 1217-1225, 2011.
- 660 Moran-Mendoza, O., Pérez-Padilla, J., Salazar-Flores, M., and Vazquez-Alfaro, F.: Wood smoke-associated lung disease: A clinical, functional, radiological and pathological description, *The International Journal of Tuberculosis and Lung Disease*, 12, 1092-1098, 2008.
- Morawska, L., and Zhang, J. J.: Combustion sources of particles. 1. Health relevance and source signatures, *Chemosphere*, 49, 1045-1058, 2002.
- 665 Naeher, L. P., Brauer, M., Lipsett, M., Zelikoff, J. T., Simpson, C. D., Koenig, J. Q., and Smith, K. R.: Woodsmoke health effects: A review, *Inhalation toxicology*, 19, 67-106, 2007.
- Neugebauer, P., Bonnekoh, B., Wevers, A., Michel, O., Mahrle, G., Krieg, T., and Stennert, E.: Human keratinocyte culture from the peritonsillar mucosa, *European archives of oto-rhino-laryngology*, 253, 245-251, 1996.
- 670 Nguyen, L. P., and Bradfield, C. A.: The search for endogenous activators of the aryl hydrocarbon receptor, *Chemical research in toxicology*, 21, 102-116, 2007.
- Novák, J., Hilscherová, K., Landlová, L., Čupr, P., Kohút, L., Giesy, J. P., and Klánová, J.: Composition and effects of inhalable size fractions of atmospheric aerosols in the polluted atmosphere. Part ii. In vitro biological potencies, *Environment international*, 63, 64-70, 2014.

- Nunes, C. A., Lima, C. F., Barbosa, L. C., Colodette, J. L., Gouveia, A., and Silvério, F. O.: Determination of eucalyptus spp lignin s/g ratio: A comparison between methods, *Bioresource technology*, 101, 4056-4061, 2010.
- 675 NYSERDA: Assessment of carbonaceous pm2.5 for new york and the region, 2008.
- Nyström, R., Lindgren, R., Avagyan, R., Westerholm, R., Lundstedt, S., and Boman, C.: Influence of wood species and burning conditions on particle emission characteristics in a residential wood stove, *Energy & Fuels*, 31, 5514-5524, 2017.
- Ohlemiller, T.: Smoldering combustion, *SFPE handbook of fire protection engineering*, 3, 2002.
- Oros, D. R., and Simoneit, B. R.: Identification and emission factors of molecular tracers in organic aerosols from biomass burning part 1. 680 Temperate climate conifers, *Applied Geochemistry*, 16, 1513-1544, 2001a.
- Oros, D. R., and Simoneit, B. R.: Identification and emission factors of molecular tracers in organic aerosols from biomass burning part 2. Deciduous trees, *Applied Geochemistry*, 16, 1545-1565, 2001b.
- Orozco-Levi, M., Garcia-Aymerich, J., Villar, J., Ramirez-Sarmiento, A., Anto, J., and Gea, J.: Wood smoke exposure and risk of chronic obstructive pulmonary disease, *European Respiratory Journal*, 27, 542-546, 2006.
- 685 Panossian, A., Mamikonyan, G., Torosyan, M., Gabrielyan, E., and Mkhitarjan, S.: Analysis of aromatic aldehydes in brandy and wine by high-performance capillary electrophoresis, *Anal. Chem.*, 73, 4379-4383, 10.1021/ac0014818, 2001.
- Park, R. J., Jacob, D. J., and Logan, J. A.: Fire and biofuel contributions to annual mean aerosol mass concentrations in the united states, *Atmos. Environ.*, 41, 7389-7400, 2007.
- Patterson, E. M., and McMahon, C. K.: Absorption characteristics of forest fire particulate matter, *Atmos. Environ.*, 18, 2541-2551, 1984.
- 690 Petkov, P., Rowlands, J., Budinsky, R., Zhao, B., Denison, M., and Mekenyan, O.: Mechanism-based common reactivity pattern (corepa) modelling of aryl hydrocarbon receptor binding affinity, SAR and QSAR in environmental research, 21, 187-214, 2010.
- Phillips, S. M., Bellcross, A. D., and Smith, G. D.: Light absorption by brown carbon in the southeastern united states is ph-dependent, *Environ. Sci. Technol.*, 51, 6782-6790, 10.1021/acs.est.7b01116, 2017.
- Phillips, S. M., and Smith, G. D.: Light absorption by charge transfer complexes in brown carbon aerosols, *Environ. Sci. Technol. Lett.*, 1, 695 382-386, 10.1021/ez500263j, 2014.
- Piñol, J., Terradas, J., and Lloret, F.: Climate warming, wildfire hazard, and wildfire occurrence in coastal eastern spain, *Climatic change*, 38, 345-357, 1998.
- Plamenac, P., Nikulin, A., Pikula, B., and Marković, Z.: Cytologic changes in the respiratory tract in children smokers, *Acta cytologica*, 23, 389-391, 1979a.
- 700 Plamenac, P., Nikulin, A., Pikula, B., and Vujanić, G.: Cytologic changes of the respiratory tract as a consequence of air pollution and smoking, *Acta cytologica*, 23, 449-453, 1979b.
- Rabelo, E., Veras, C., Carvalho Jr, J., Alvarado, E., Sandberg, D., and Santos, J.: Log smoldering after an amazonian deforestation fire, *Atmos. Environ.*, 38, 203-211, 2004.
- Ragnar, M., Lindgren, C. T., and Nilvebrant, N.-O.: Pka-values of guaiacyl and syringyl phenols related to lignin, *Journal of Wood Chemistry and Technology*, 20, 277-305, 10.1080/02773810009349637, 2000.
- 705 Rhee, K. S., and Bratzler, L.: Polycyclic hydrocarbon composition of wood smoke, *Journal of Food Science*, 33, 626-632, 1968.
- Rhim, J.: Neoplastic transformation of human epithelial cells in vitro, *Anticancer research*, 9, 1345-1365, 1989.
- Rice, R. H., and Green, H.: Presence in human epidermal cells of a soluble protein precursor of the cross-linked envelope: Activation of the cross-linking by calcium ions, *Cell*, 18, 681-694, 1979.
- 710 Rice, R. H., Steinmann, K. E., DeGraffenried, L. A., Qin, Q., Taylor, N., and Schlegel, R.: Elevation of cell cycle control proteins during spontaneous immortalization of human keratinocytes, *Molecular biology of the cell*, 4, 185-194, 1993.
- Roach, P. J., Laskin, J., and Laskin, A.: Higher-order mass defect analysis for mass spectra of complex organic mixtures, *Anal. Chem.*, 83, 4924-4929, 10.1021/ac200654j, 2011.
- Rogers, M. S., Kobayashi, T., Pittelkow, M. R., and Strehler, E. E.: Human calmodulin-like protein is an epithelial-specific protein regulated during keratinocyte differentiation, *Experimental cell research*, 267, 216-224, 2001.
- 715 Rogge, W. F., Hildemann, L. M., Mazurek, M. A., Cass, G. R., and Simoneit, B. R.: Sources of fine organic aerosol. 9. Pine, oak, and synthetic log combustion in residential fireplaces, *Environ. Sci. Technol.*, 32, 13-22, 1998.
- Salonvaara, M., Ojanen, T., Holm, A., Künzel, H. M., and Karagiozis, A. N.: Moisture buffering effects on indoor air quality-experimental and simulation results, *Proceedings (CD) of the Performance of Exterior Envelopes of Whole Buildings IX International Conference*, 2004, 11,
- 720 Samburova, V., Connolly, J., Gyawali, M., Yatavelli, R. L. N., Watts, A. C., Chakrabarty, R. K., Zielinska, B., Moosmüller, H., and Khlystov, A.: Polycyclic aromatic hydrocarbons in biomass-burning emissions and their contribution to light absorption and aerosol toxicity, *Science of The Total Environment*, 568, 391-401, <https://doi.org/10.1016/j.scitotenv.2016.06.026>, 2016.
- Selevan, S. G., Borkovec, L., Slott, V. L., Zudová, Z., Rubes, J., Evenson, D. P., and Perreault, S. D.: Semen quality and reproductive health 725 of young czech men exposed to seasonal air pollution, *Environmental Health Perspectives*, 108, 887-894, 2000.
- Shafizadeh, F., and Fu, Y.: Pyrolysis of cellulose, *Carbohydrate Research*, 29, 113-122, 1973.
- Sharma, R. K., and Hajjaligol, M. R.: Effect of pyrolysis conditions on the formation of polycyclic aromatic hydrocarbons (pahs) from polyphenolic compounds, *Journal of Analytical and Applied Pyrolysis*, 66, 123-144, 2003.

- 730 Simoneit, B., Rogge, W., Lang, Q., and Jaffé, R.: Molecular characterization of smoke from campfire burning of pine wood (*pinus elliottii*), *Chemosphere-Global Change Science*, 2, 107-122, 2000.
- Simoneit, B. R.: Biomass burning—a review of organic tracers for smoke from incomplete combustion, *Applied Geochemistry*, 17, 129-162, 2002.
- Simoneit, B. R., Rogge, W., Mazurek, M., Standley, L., Hildemann, L., and Cass, G.: Lignin pyrolysis products, lignans, and resin acids as specific tracers of plant classes in emissions from biomass combustion, *Environ. Sci. Technol.*, 27, 2533-2541, 1993.
- 735 Simoneit, B. R., Schauer, J. J., Nolte, C., Oros, D. R., Elias, V. O., Fraser, M., Rogge, W., and Cass, G. R.: Levoglucosan, a tracer for cellulose in biomass burning and atmospheric particles, *Atmos. Environ.*, 33, 173-182, 1999.
- Smith, J. S., Laskin, A., and Laskin, J.: Molecular characterization of biomass burning aerosols using high-resolution mass spectrometry, *Anal. Chem.*, 81, 1512-1521, 2008.
- 740 Smith, K. R., and Mehta, S.: The burden of disease from indoor air pollution in developing countries: Comparison of estimates, *International journal of hygiene and environmental health*, 206, 279-289, 2003.
- Smith, P. K., Krohn, R. I., Hermanson, G., Mallia, A., Gartner, F., Provenzano, M., Fujimoto, E., Goeke, N., Olson, B., and Klenk, D.: Measurement of protein using bicinchoninic acid, *Analytical biochemistry*, 150, 76-85, 1985.
- Standley, L. J., and Simoneit, B. R.: Preliminary correlation of organic molecular tracers in residential wood smoke with the source of fuel, *Atmospheric Environment. Part B. Urban Atmosphere*, 24, 67-73, 1990.
- 745 Stejskalova, L., Dvorak, Z., and Pavek, P.: Endogenous and exogenous ligands of aryl hydrocarbon receptor: Current state of art, *Curr Drug Metab*, 12, 198-212, 10.2174/138920011795016818, 2011.
- Swiston, J. R., Davidson, W., Attridge, S., Li, G. T., Brauer, M., and van Eeden, S. F.: Wood smoke exposure induces a pulmonary and systemic inflammatory response in firefighters, *European respiratory journal*, 32, 129-138, 2008.
- Tyśkiewicz, K., Konkol, M., Kowalski, R., Rój, E., Warmański, K., Krzyżaniak, M., Gil, Ł., and Stolarski, M. J.: Characterization of bioactive compounds in the biomass of black locust, poplar and willow, *Trees*, 1-29, 2019.
- 750 Updyke, K. M., Nguyen, T. B., and Anzhkorodov, S. A.: Formation of brown carbon via reactions of gaseous ammonia with secondary organic aerosols from biogenic and anthropogenic precursors *Atmos. Environ.*, 63, 22-31, 2012.
- US EPA: Method 610: Polynuclear aromatic hydrocarbons, in, 2005.
- van der Hage, E. R., Boon, J. J., Steenvoorden, R. J., and Weeding, T. L.: Resonance-enhanced multiphoton ionization mass spectrometric analysis of lignin using laser pyrolysis with entrainment into a supersonic jet, *Anal. Chem.*, 66, 543-550, 1994.
- 755 Wang, J., Xie, P., Xu, Y., Kettrup, A., and Schramm, K.-W.: Differing estrogen activities in the organic phase of air particulate matter collected during sunny and foggy weather in a chinese city detected by a recombinant yeast bioassay, *Atmos. Environ.*, 38, 6157-6166, <https://doi.org/10.1016/j.atmosenv.2004.07.027>, 2004.
- Ward, D., Susott, R., Kauffman, J., Babbitt, R., Cummings, D., Dias, B., Holben, B., Kaufman, Y., Rasmussen, R., and Setzer, A.: Smoke and fire characteristics for cerrado and deforestation burns in brazil: Base-b experiment, *J. Geophys. Res.*, 97, 14601-14619, 1992.
- 760 Washenfelder, R., Attwood, A., Brock, C., Guo, H., Xu, L., Weber, R., Ng, N., Allen, H., Ayres, B., and Baumann, K.: Biomass burning dominates brown carbon absorption in the rural southeastern united states, *Geophys. Res. Lett.*, 42, 653-664, 2015.
- Watts, H. D., Mohamed, M. N. A., and Kubicki, J. D.: Comparison of multistandard and tms-standard calculated nmr shifts for coniferyl alcohol and application of the multistandard method to lignin dimers, *The Journal of Physical Chemistry B*, 115, 1958-1970, 2011.
- 765 Wegesser, T. C., Pinkerton, K. E., and Last, J. A.: California wildfires of 2008: Coarse and fine particulate matter toxicity, *Environmental health perspectives*, 117, 893-897, 2009.
- Wenger, D., Gerecke, A. C., Heeb, N. V., Hueglin, C., Seiler, C., Haag, R., Naegeli, H., and Zenobi, R.: Aryl hydrocarbon receptor-mediated activity of atmospheric particulate matter from an urban and a rural site in switzerland, *Atmos. Environ.*, 43, 3556-3562, <https://doi.org/10.1016/j.atmosenv.2009.04.012>, 2009a.
- 770 Wenger, D., Gerecke, A. C., Heeb, N. V., Schmid, P., Hueglin, C., Naegeli, H., and Zenobi, R.: In vitro estrogenicity of ambient particulate matter: Contribution of hydroxylated polycyclic aromatic hydrocarbons, *Journal of Applied Toxicology*, 29, 223-232, 10.1002/jat.1400, 2009b.
- Whetten, R., and Sederoff, R.: Lignin biosynthesis, *The plant cell*, 7, 1001, 1995.
- White, R. H.: Effect of lignin content and extractives on the higher heating value of wood, *Wood and fiber science*, 19, 446-452, 2007.
- 775 WHO: The world health report 2002: Reducing risks, promoting healthy life, World Health Organization, 2002.
- WHO: Indoor air pollution and health, fact sheet 292, in, 2011.
- Wilson, M. J., Sabbioni, G., Rando, R., and Miller III, C. A.: Activation of aryl hydrocarbon receptor signaling by extracts of teak and other wood dusts, *Environmental toxicology*, 30, 1375-1384, 2015.
- 780 Wu, J., Winer, A. M., and Delfino, R. J.: Exposure assessment of particulate matter air pollution before, during, and after the 2003 southern california wildfires, *Atmos. Environ.*, 40, 3333-3348, 2006.
- Wu, L., Jin, L., Shi, T., Zhang, B., Zhou, Y., Zhou, T., Bao, W., Xiang, H., Zuo, Y., and Li, G.: Association between ambient particulate matter exposure and semen quality in wuhan, china, *Environment international*, 98, 219-228, 2017.
- Yokelson, R. J., Susott, R., Ward, D. E., Reardon, J., and Griffith, D. W.: Emissions from smoldering combustion of biomass measured by open-path fourier transform infrared spectroscopy, *J. Geophys. Res.*, 102, 18865-18877, 1997.

- 785 Zelikoff, J. T., Chen, L. C., Cohen, M. D., and Schlesinger, R. B.: The toxicology of inhaled woodsmoke, *Journal of Toxicology and Environmental Health Part B: Critical Reviews*, 5, 269-282, 2002.
- Zhang, Y., Obrist, D., Zielinska, B., and Gertler, A.: Particulate emissions from different types of biomass burning, *Atmos. Environ.*, 72, 27-35, 2013.

790

795

800

Table 1: Results for cellular assays and visible light mass absorption coefficient (MAC_{vis}) for WSA extracts. Lower EC_{50} values correspond to higher toxicity. AhR and ER activities are expressed as bioequivalent (BEQ) values of calibrant compounds 2,3,7,8-tetrachlorodibenzo-*p*-dioxin (TCDD) and 17 β -estradiol (E2), respectively. All aerosol properties reference the mass in grams of original WSA material that were tested. The concentration-response curves for the cell toxicity of different WSA (Fig. S3) and receptor activity of TCDD and ER (Fig. S4) can be found in the supplement.

Wood sample	Cell Toxicity EC_{50} (μ g)	AhR Activity (TCDD BEQ, g/g)	ER Activity (E2 BEQ, g/g)	MAC_{vis} (cm^2/g)
Afr. Mahogany	$250 \pm 20\%$ ^a	$2.5 \times 10^{-6} \pm 12\%$	$3.5 \times 10^{-9} \pm 15\%$	$2009 \pm 10\%$
Birch	$160 \pm 25\%$	$1.9 \times 10^{-7} \pm 13\%$	N.D. ^b	$1645 \pm 10\%$
Cherry	$208 \pm 30\%$	$2.2 \times 10^{-7} \pm 12\%$	$3.5 \times 10^{-9} \pm 17\%$	$1387 \pm 10\%$
Maple	$160 \pm 20\%$	$1.3 \times 10^{-6} \pm 10\%$	$3.5 \times 10^{-9} \pm 10\%$	$1927 \pm 10\%$
Pine	$256 \pm 20\%$	$4.0 \times 10^{-6} \pm 25\%$	$1.8 \times 10^{-9} \pm 26\%$	$1477 \pm 10\%$
Poplar	$163 \pm 40\%$	$7.5 \times 10^{-7} \pm 14\%$	$1.5 \times 10^{-9} \pm 35\%$	$1557 \pm 10\%$
Red Oak	$109 \pm 40\%$	$8.1 \times 10^{-8} \pm 16\%$	N.D.	$1094 \pm 10\%$
Redwood	$320 \pm 20\%$	$3.4 \times 10^{-6} \pm 10\%$	$3.6 \times 10^{-9} \pm 25\%$	$637 \pm 10\%$
Walnut	$320 \pm 20\%$	$4.0 \times 10^{-6} \pm 25\%$	$1.9 \times 10^{-9} \pm 30\%$	$1118 \pm 10\%$

a. Table values are reported as the mean of repeated trials with uncertainty noted as percent of the mean that has been propagated from multiple sources

b. Not detected (N.D.). Values are not significantly different than controls at this sample preparation protocol.

805

810

Table 2: Peaks observed in at least 8 out of 9 samples with either correlations to aerosol properties or other significance (e.g., high signals). The average normalized signal-to-noise in all samples and the neutral molecular formulas are shown. Entries have p -values ≤ 0.05 (90%), or $p < 0.1$ (100%).

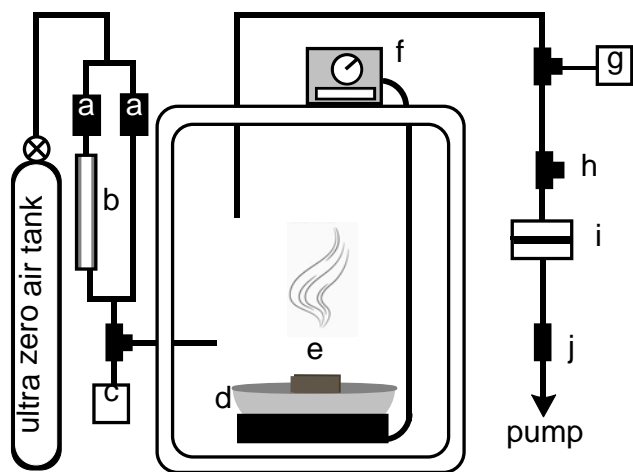
Obs. m/z	S/N (%)	Formula				Tox		AhR		MAC		Proposed assignment(s)	chemical	CID neutral or radical losses
		C	H	O	N	Sign	R ²	Sign	R ²	Sign	R ²			
127.039	1.3	6	6	3	0	neg	0.54	pos	0.40	---	---	5-hydroxymethyl furfural		H ₂ O, CO, C ₂ H ₂ O ₂ (CH ₂ O + CO?)
129.054	0.3	6	8	3	0	neg	0.58	---	---	---	---	---		---
137.059	1.3	8	8	2	0	---	---	---	---	---	---	toluic acid, anisaldehyde		CH ₃ , H ₂ O, CO, HCOOH, CH ₂ O+CO
139.075	0.2	8	10	2	0	---	---	---	---	---	---	methylguaiacol		
141.054	0.3	7	8	3	0	---	---	---	---	pos	0.52	methoxymethyl-furfural, others		CO, CH ₄ O, CH ₂ O + CO
143.034	0.8	6	6	4	0	---	---	---	---	---	---	5-Hydroxymethyl-2-furancarboxylic acid		HCOOH, H ₂ O
143.070	0.2	7	10	3	0	---	---	---	---	pos	0.46	methoxyfuranethanol, hydroxymethylfuranethanol		CH ₃ OH, H ₂ O
149.059	0.2	9	8	2	0	---	---	---	---	---	---	coumaraldehyde		---
151.039	0.6	8	6	3	0	neg	0.46	pos	0.44	neg	0.47	hydroxyphenylglyoxal		C ₂ H ₂ O, CO, H ₂ O
151.075	0.7	9	10	2	0	---	---	---	---	---	---	methoxyvinylphenol, coumaryl alcohol		CO, CH ₃ OH, H ₂ O, C ₃ H ₆ , C ₃ H ₄ O, C ₂ H ₄ O ₂
153.054	0.8	8	8	3	0	neg	0.47	pos	0.45	---	---	vanillin (minor methoxybenzoic acid)		CO, CH ₃ OH (minor HCOOH, CH ₃ OH+CO ₂)
153.091	0.2	9	12	2	0	---	---	---	---	pos	0.59	hydroxypropylphenol		H ₂ O, C ₃ H ₈ O
155.070	0.6	8	10	3	0	---	---	---	---	---	---	syringol, hydroxyl-ethylbenzene diol		CH ₃ OH, CH ₃ , H ₂ O, C ₂ H ₄ O ₂
163.039	0.7	9	6	3	0	---	---	---	---	---	---	hydroxycoumarin		CO, CO ₂
163.075	0.7	10	10	2	0	neg	0.43	pos	0.72	---	---	methoxy-cinnamaldehyde		CO, CH ₃ OH, C ₂ H ₂ O, C ₃ H ₄ O
165.091	0.4	10	12	2	0	---	---	---	---	---	---	eugenol, isoeugenol		H ₂ O, CH ₃ OH, C ₃ H ₆
167.070	2.7	9	10	3	0	---	---	neg	0.44	---	---	homovanillin, acetovanillone		CH ₃ , H ₂ O, CO, CH ₃ OH, C ₂ H ₂ O, CH ₂ O ₂ , C ₂ H ₄ O ₂
169.049	0.4	8	8	4	0	---	---	---	---	---	---	vanillic acid, dihydroxyphenylacetic acid		CO, H ₂ O, CH ₃ , HCOOH, C ₂ H ₂ O, C ₂ H ₄ O ₂
169.086	0.6	9	12	3	0	---	---	---	---	pos	0.46	homovanillyl alcohol		C ₂ H ₄ O, H ₂ O, CH ₃ OH
177.054	1.2	10	8	3	0	---	---	---	---	---	---	methoxycoumarin, hydroxymethyl-coumarin		CO, CH ₃ OH, C ₄ H ₄ O, CH ₃
177.091	0.3	11	12	2	0	---	---	---	---	pos	0.59	ethylcinnamate		H ₂ O, C ₂ H ₄ , C ₂ H ₂ O
179.070	3.0	10	10	3	0	---	---	---	---	---	---	coniferaldehyde, methoxycinnamic acid		H ₂ O, CO, CH ₃ OH, HCOOH, C ₂ H ₂ O, C ₃ H ₄ O
179.106	0.1	11	14	2	0	---	---	---	---	pos	0.77	---		CO, C ₂ H ₄ O, C ₂ H ₄ O ₂ (CO + CH ₃ OH?)

181.086	1.3	10	12	3	0	---	---	---	---	pos	0.51	coniferyl alcohol, dihydroconiferaldehyde, methoxyphenyl-propanoic acid	H ₂ O, CH ₃ , CO, C ₂ H ₄ , C ₂ H ₂ O, C ₃ H ₆ , HCOOH, C ₂ H ₆ O, C ₃ H ₄ O, C ₂ H ₄ O ₂ , C ₃ H ₆ O ₂
183.065	1.8	9	10	4	0	---	---	---	---	---	---	syringaldehyde, homovanillic acid	H ₂ O, CO, HCOOH, CH ₃ OH, C ₂ H ₄ O ₂
183.101	0.4	10	14	3	0	---	---	---	---	pos	0.76	dihydroconiferyl alcohol, others	---
185.042	1.2	6	10	5	0	---	---	---	---	neg	0.75	levoglucosan, mannosan, galactosan	H ₂ O
187.075	0.2	12	10	2	0	---	---	---	---	pos	0.47	phenyl furancarbaldehyde	CO, C ₃ H ₅ O ₂
191.070	1.2	11	10	3	0	---	---	---	---	pos	0.64	acetyl coumaraldehyde	CO, H ₂ O, CH ₃ , C ₂ H ₄ O ₂
191.106	0.2	12	14	2	0	---	---	---	---	pos	0.49	isoeugenyl acetone	---
193.049	0.6	10	8	4	0	---	---	---	---	neg	0.47	hydroxy(oxopropenyl)benzoic acid	CH ₃ , CO, H ₂ O, HCOOH
193.086	1.4	11	12	3	0	---	---	---	---	pos	0.78	vanillylidene acetone, dimethoxyphenylacrylaldehyde	CH ₃ OH, H ₂ O, CO, C ₂ H ₂ O ₂ , C ₃ H ₄ O, C ₂ H ₄ O ₂ , C ₂ H ₄ O, C ₃ H ₄ O ₃
195.101	0.7	11	14	3	0	pos	0.55	neg	0.41	pos	0.57	methoxyisoeugenol, vanillylacetone	---
197.080	1.7	10	12	4	0	---	---	---	---	---	---	acetosyringone	C ₂ H ₂ O, H ₂ O, CH ₃ OH, C ₂ H ₂ O+H ₂ O
197.117	0.1	11	16	3	0	---	---	---	---	pos	0.80	---	---
198.076	0.7	9	11	4	1	---	---	---	---	---	---	pyridine derivative	C ₄ H ₆ O ₃ , H ₂ O, C ₅ H ₅ NO
199.060	0.2	9	10	5	0	---	---	---	---	---	---	syringic acid	---
201.091	0.2	13	12	2	0	---	---	---	---	pos	0.63	---	---
205.084	1.1	10	14	3	0	---	---	---	---	---	---	dihydroconiferyl alcohol, unknown aldehyde	CH ₃ , H ₂ O, CO, CH ₃ OH, C ₂ H ₂ O, HCOOH, C ₃ H ₄ O, C ₂ H ₂ O ₂
207.065	0.7	11	10	4	0	---	---	---	---	---	---	---	H ₂ O
207.101	0.6	12	14	3	0	---	---	---	---	pos	0.70	acetyleugenol	CH ₃ OH, C ₂ H ₄ O ₂
209.080	5.8	11	12	4	0	pos	0.49	neg	0.51	---	---	sinapaldehyde (minor dimethoxycinnamic acid)	H ₂ O, CO, CH ₃ , CH ₃ OH, C ₂ H ₂ O, C ₃ H ₄ O, HCOOH, CH ₂ O+CH ₂ O
209.117	0.1	12	16	3	0	---	---	---	---	pos	0.88	---	---
211.096	3.7	11	14	4	0	pos	0.44	neg	0.56	---	---	sinapyl alcohol	H ₂ O, CH ₃ OH, CH ₂ O+CH ₂ O, C ₃ H ₆ O ₂ (maybe C ₃ H ₄ O + H ₂ O)
219.101	0.8	13	14	3	0	---	---	pos	0.41	---	---	unknown phenols, G-methylfuran (α -2) dimer	CH ₃ , H ₂ O, CO, CH ₃ OH, C ₂ H ₂ O, HCOOH, C ₃ H ₄ O, C ₂ H ₂ O ₂ , C ₃ H ₆ O ₂ , C ₅ H ₆ O, C ₃ H ₄ O ₃ , C ₇ H ₈ O ₂
221.080	0.5	12	12	4	0	---	---	---	---	---	---	acetovanilaldehyde	CH ₃ , H ₂ O, CO, CH ₃ OH, C ₂ H ₂ O, HCOOH, C ₂ H ₄ O ₂
221.117	0.2	13	16	3	0	---	---	---	---	pos	0.94	eugenyl propionate, and another phenol	H ₂ O, CO, CH ₃ OH, C ₃ H ₆ , C ₃ H ₆ O ₂

223.060	0.4	11	10	5	0	pos	0.49	neg	0.62	---	---	---	---
223.096	0.6	12	14	4	0	pos	0.54	neg	0.53	---	---	tetrahydrofuran derivative	C ₄ H ₈ O, C ₅ H ₁₀ O
225.111	0.2	12	16	4	0	pos	0.57	---	---	pos	0.60	---	---
227.052	1.2	5	10	8	2	neg	0.43	pos	0.50	neg	0.58	unknown nitro or nitrate derivative	H ₂ O, CH ₃ OH, CH ₃ NO ₂
227.091	0.3	11	14	5	0	pos	0.69	neg	0.66	---	---	sinapyl hydroperoxide	H ₂ O
229.084	0.2	14	12	3	0	---	---	pos	0.57	---	---	resveratrol	H ₂ O
235.096	0.6	13	14	4	0	---	---	---	---	pos	0.56	---	---
237.111	0.3	13	16	4	0	pos	0.52	neg	0.44	pos	0.53	---	---
239.091	0.1	12	14	5	0	pos	0.52	neg	0.48	---	---	---	---
245.080	0.2	14	12	4	0	neg	0.50	pos	0.57	---	---	---	---
247.096	0.5	14	14	4	0	---	---	---	---	---	---	diguaiacol (5,5'), others	H ₂ O, CH ₃ , CH ₃ OH, CO, C ₂ H ₄ O ₂ , C ₂ H ₂ O, HCOOH, C ₃ H ₄ O ₃ , C ₃ H ₄ O, C ₃ H ₆ O ₂ , C ₆ H ₆ O ₂ , C ₇ H ₈ O ₂
247.132	0.2	15	18	3	0	---	---	---	---	pos	0.41	---	---
249.111	0.7	14	16	4	0	pos	0.74	neg	0.60	pos	0.49	furfuryl alcohol deriv., hydroxybenzoquinone derivative (C ₆ H ₄ O ₃ ⁺ fragment ion), others	H ₂ O, C ₈ H ₁₂ O, CO, CH ₃ OH, C ₆ H ₈ O ₂ , C ₃ H ₆ O ₂ , C ₂ H ₄ O ₂ , C ₄ H ₆ O ₃ , C ₄ H ₆ O ₃ , C ₅ H ₆ O ₂ , C ₄ H ₈ O ₂ , C ₃ H ₆
251.127	0.1	14	18	4	0	---	---	---	---	pos	0.64	---	---
261.112	0.5	15	16	4	0	---	---	---	---	---	---	G-guaiacol dimer (α -2), others	---
265.106	0.3	14	16	5	0	---	---	---	---	pos	0.46	S-furfuryl alcohol dimer (α -2)	---
271.096	0.3	16	14	4	0	neg	0.63	pos	0.65	---	---	G-guaicol (β -5, ring closure)	---
273.112	0.2	16	16	4	0	---	---	---	---	---	---	diguaiacol (β -1), G-guaicol (β -5)	---
289.106	0.6	16	16	5	0	---	---	---	---	---	---	G-syringol dimer (β -5), others	---
301.107	0.3	17	16	5	0	neg	0.41	pos	0.55	---	---	G-vanillin dimer (β -5)	---
303.122	0.3	17	18	5	0	neg	0.44	pos	0.58	---	---	guaicyl-syringyl dimer (stilbene), others	---
305.138	0.3	17	20	5	0	---	---	---	---	pos	0.67	G-guaiacol dimer (β -O-4)	---
313.107	0.2	18	16	5	0	---	---	pos	0.40	---	---	G-homovanillin dimer (β -5, ring closure), others	---
315.122	0.3	18	18	5	0	---	---	pos	0.50	---	---	G-homovanillin dimer (β -5), others	---
317.138	0.2	18	20	5	0	---	---	pos	0.43	---	---	G-G dimer (α -5)	---
327.122	0.3	19	18	5	0	---	---	---	---	---	---	G-coniferaldehyde dimer (β -1), others	---
329.102	0.1	18	16	6	0	---	---	pos	0.40	---	---	S-vanillin dimer (β -5 ring closure), hydroxy G-	---

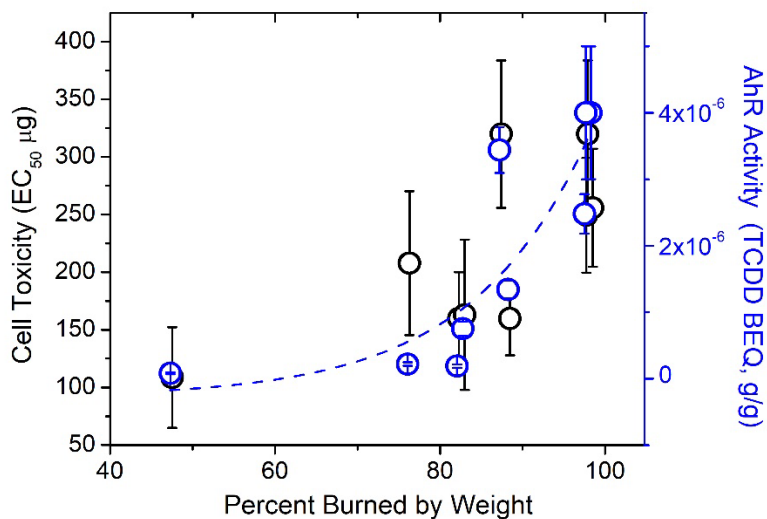
												homovanillin dimer (β -5, ring closure), others	
329.138	0.3	19	20	5	0	---	---	pos	0.42	---	---	eugenol-vanillone dimer (5,5'), others	---
331.117	1.0	18	18	6	0	---	---	---	---	pos	0.44	G-vanillin dimer (5,5'), others	---
333.133	0.4	18	20	6	0	---	---	---	---	---	---	S-S dimer (β -1), G-vanillin dimer (β -O-4)	---
345.132	0.2	19	20	6	0	---	---	---	---	pos	0.60	coniferylalcohol-vanillone dimer (5,5'), others	---
357.130	1.3	18	22	6	0	---	---	---	---	---	---	G-syringol dimer or S- guaiacol dimer (β -O-4)	---
359.148	0.2	20	22	6	0	---	---	---	---	pos	0.77	diconiferylalcohol (5,5', β - β , or β -), and others	---
383.146	0.2	20	24	6	0	---	---	---	---	---	---	diconiferylalcohol (β -O-4)	---

815

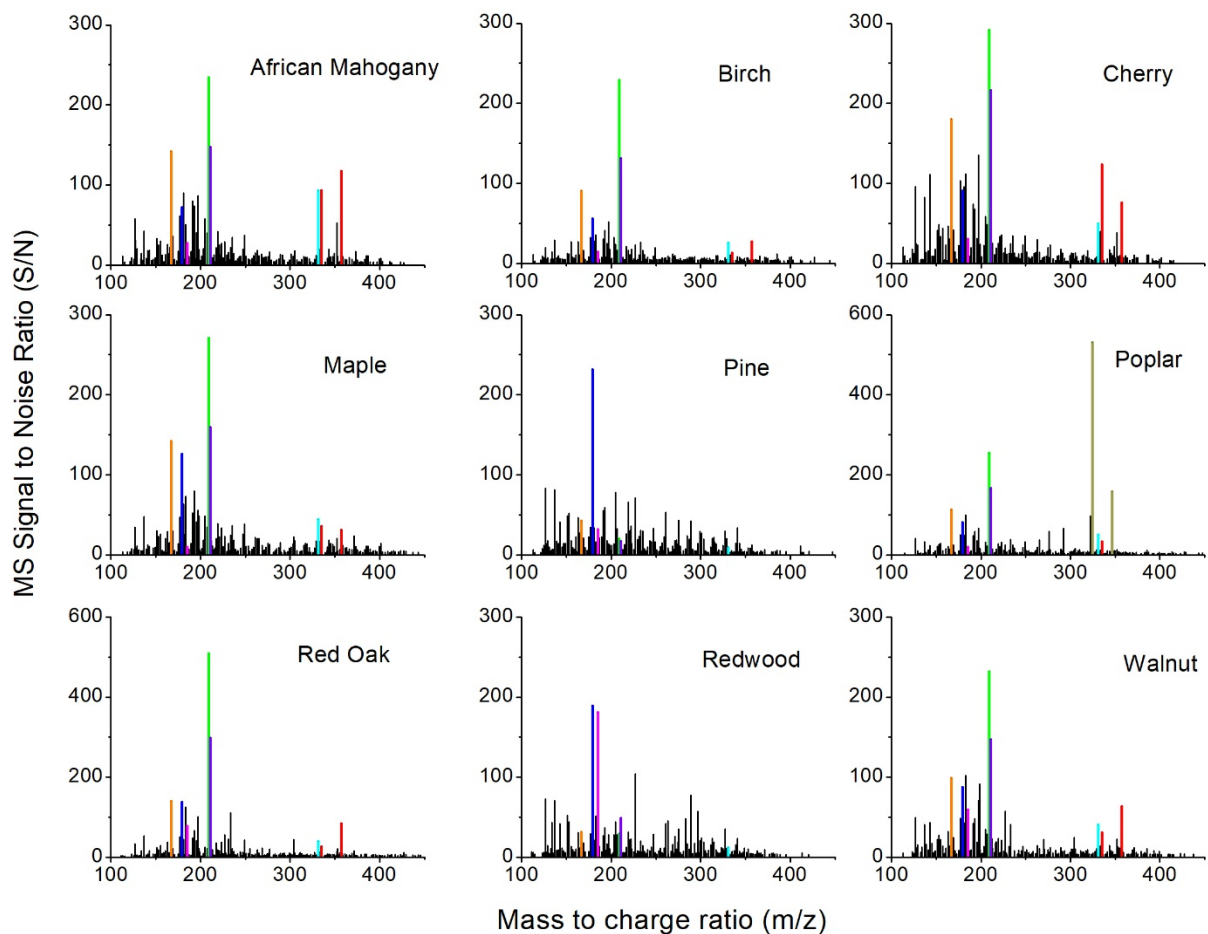


820 **Figure 1:** Simplified diagram of smoldering combustion chamber. Key: (a) pressure flow restrictors, different flow rates each to control humidity; (b) humidifier tube; (c) relative-humidity probe; (d) heating mantle; (e) wood fuel blocks; (f) temperature controller; (g) thermocouple temperature measurement; (h) vent; (i) aerosol filter collection apparatus; (j) vacuum flow restrictor.

825

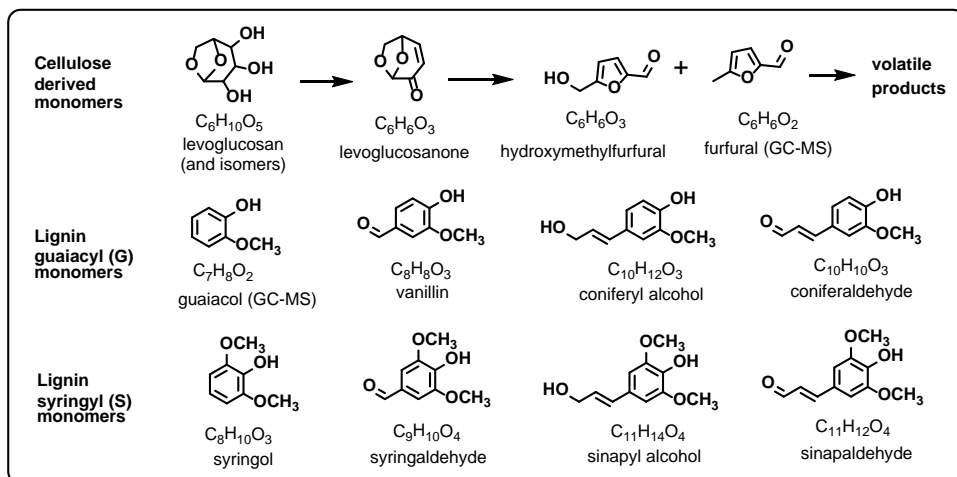


830 **Figure 2:** Relationship between cell toxicity and AhR activity of smoldering WSA extracts with the percent of wood that has been burned at the time of aerosol collection.



835 **Figure 3:** High resolution mass spectra of WSA extracts in the study, taken at 100 ug/mL concentration. The color key for
 highlighted peaks with proposed assignments for the major species at each peak is: Orange – $C_9H_{10}O_3$, acetovanillone or
 homovanillin (protonated); Blue – $C_{10}H_{10}O_3$, coniferyl aldehyde (protonated); Magenta – $C_6H_{10}O_5$, levoglucosan, mannosan,
 or galactosan (sodiated); Green – $C_{11}H_{12}O_4$, sinapaldehyde (protonated); Cyan – $C_{18}H_{18}O_6$, G-vanillin dimer (protonated);
 Red – $C_{18}H_{22}O_6$, various S-G dimers (protonated and sodiated); Dark yellow – $C_{20}H_{21}NO_3$, unknown alkaloid (protonated and
 840 sodiated)..

select observed monomers



select observed lignin dimers

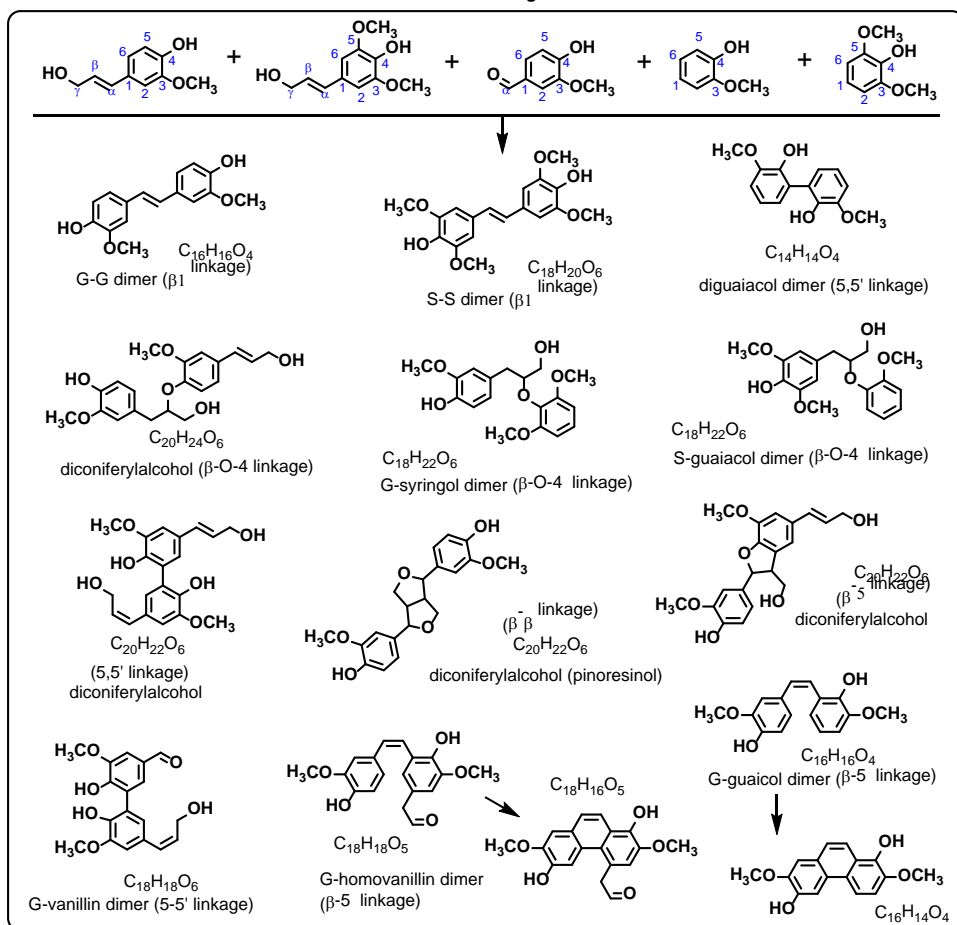
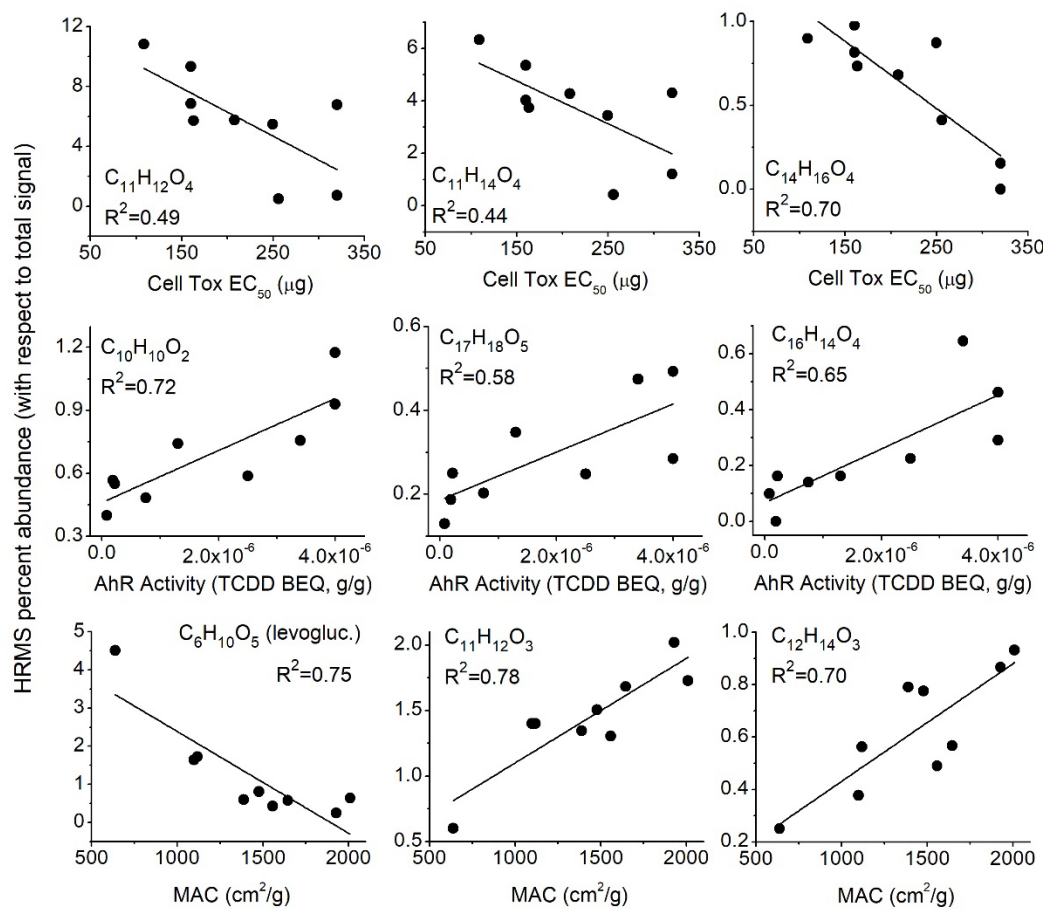


Figure 4: Proposed chemical structures of some monomers and dimers observed in this work. More than one structure may be present at each molecular formula.



845 **Figure 5:** Select correlations of HRMS peaks to cell toxicity EC₅₀, AhR activity, and MAC_{vis}. Linear fits and correlation coefficients are shown. Proposed chemical identities are listed in Table 1.