

# Lawrence Berkeley National Laboratory

## Recent Work

### Title

ALIGNMENT OF SOME TRIPLET AND SINGLET D STATES OF HELIUM

### Permalink

<https://escholarship.org/uc/item/36g295v4>

### Authors

Yellin, J.

Hadeishi, T.

Michel, M.C.

### Publication Date

1972-12-01

Submitted to Physical  
Review Letters

RECEIVED  
LAWRENCE  
BERNARD LABORATORY

LBL-1602  
Preprint c.1

THE UNIVERSITY OF CALIFORNIA  
LAWRENCE BERNARD LABORATORY

ALIGNMENT OF SOME TRIPLET AND SINGLET  
D STATES OF HELIUM

J. Yellin, T. Hadeishi, and M. C. Michel

December 1972

Prepared for the U. S. Atomic Energy Commission  
under Contract W-7405-ENG-48

**For Reference**

Not to be taken from this room



LBL-1602  
c.1

## **DISCLAIMER**

This document was prepared as an account of work sponsored by the United States Government. While this document is believed to contain correct information, neither the United States Government nor any agency thereof, nor the Regents of the University of California, nor any of their employees, makes any warranty, express or implied, or assumes any legal responsibility for the accuracy, completeness, or usefulness of any information, apparatus, product, or process disclosed, or represents that its use would not infringe privately owned rights. Reference herein to any specific commercial product, process, or service by its trade name, trademark, manufacturer, or otherwise, does not necessarily constitute or imply its endorsement, recommendation, or favoring by the United States Government or any agency thereof, or the Regents of the University of California. The views and opinions of authors expressed herein do not necessarily state or reflect those of the United States Government or any agency thereof or the Regents of the University of California.

ALIGNMENT OF SOME TRIPLET AND SINGLET D STATES OF HELIUM\*

J. Yellin, T. Hadeishi, and M. C. Michel

Lawrence Berkeley Laboratory  
University of California  
Berkeley, California 94720

December 1972

Abstract:

The alignment of some singlet and triplet D states of  $^4\text{He}$  resulting from the beam-foil interaction process at 40 kV has been measured for principal quantum numbers  $n = 3, 4, 5,$  and  $6$ . The measurements were based on zero field level crossing.

The beam-foil interaction process is known to lead to an alignment of excited atomic states.<sup>1</sup> Alignment has been reported for a number of atomic as well as ionic<sup>2</sup> states; however, there appears to be as yet no systematic study of the alignment's dependence on principle quantum number, angular momentum state and spin state. Such a study is of interest both for an understanding of the beam-foil interaction process and for the performance of experiments based on alignment,<sup>3,4,5,6</sup> e.g. level crossing and radio frequency spectroscopy. The present investigation was undertaken as part of a program to utilize the alignment induced in the beam-foil scattering process for the measurement of atomic constants.<sup>5</sup> We report here on the alignment of the  $n^3D_{1,2,3}$  and  $n^1D_2$  states of  $^4\text{He}$  for principle quantum numbers  $n = 3,4,5$  and 6. These measurements were done for incident energies of 40 kV. Carbon foils of 6.0 and 6.7  $\mu\text{g}/\text{cm}^2$  density were used.

The alignment is defined by Eq. (1)

$$P = \frac{I_{\parallel} - I_{\perp}}{I_{\perp} + I_{\parallel}} \quad (1)$$

where  $I_{\perp}$  is the intensity of light with polarization vector perpendicular to the beam axis and to the direction of observation and  $I_{\parallel}$  is the intensity of light with polarization vector parallel to the beam axis. A direct measurement of the alignment is susceptible to serious error resulting from reflection polarization in the detector optical system and it is for this reason that we chose to make the measurements by observing the integrated "quantum-beat" in the limits where the observation time  $\Delta t \ll \tau$  as well as when  $\Delta t \sim \tau$  where  $\tau$  is the lifetime of the state.

The intensity fluctuation or quantum beat for an aligned singlet D state is given by

$$I(\omega, t) \propto e^{-\gamma t} (1 + A \cos 2(\omega t - \theta)) \quad (2)$$

where  $\omega = g_J \mu_0 H / \hbar$ ,  $\theta$  is the angle which the linear polarizer makes with the beam axis,  $A$  is the alignment and  $\gamma$  is the reciprocal lifetime in radians/sec of the  $^1D_2$  state.  $g_J$  is the gyromagnetic ratio ( $= 1$  for  $^1D_2$ ),  $\mu_0$  is the Bohr magneton and  $H$  is the magnetic field intensity. In Eq. (2)  $t$  is the time following excitation in the foil at which the observation is made and hence  $t = \ell/v$  where  $\ell$  is the foil-detector separation and  $v$  the beam velocity. The detector is assumed to have a narrow slit  $\Delta \ell$  such that  $\Delta \ell/v \ll 1/\gamma$ . Thus by observing the intensity fluctuation the alignment can be determined. If the detector solid angle intercepts a large segment of the beam or what is equivalent, if many small adjoining beam segments are viewed, then the signal is

$$S(\omega) = \int_{t_1}^{t_2} I(\omega, t) dt \propto -\frac{1}{\gamma} \left( e^{-\gamma t_2} - e^{-\gamma t_1} \right) + \frac{A\gamma/4}{\left(\frac{\gamma}{2}\right)^2 + \omega^2} \left\{ e^{-\gamma t_2} \left( \frac{2\omega}{\gamma} \sin 2(\omega t_2 - \theta) - \cos 2(\omega t_2 - \theta) \right) - e^{-\gamma t_1} \left( \frac{2\omega}{\gamma} \sin 2(\omega t_1 - \theta) - \cos 2(\omega t_1 - \theta) \right) \right\} \quad (3)$$

where  $t_1 = \ell_{\min}/v$  and  $t_2 = \ell_{\max}/v$ . If the limits are carried from 0 to  $\infty$  we have,

$$S(\omega) \propto \frac{1}{\gamma} + \frac{A\gamma/4}{\left(\frac{\gamma}{2}\right)^2 + \omega^2} \left( \frac{2\omega}{\gamma} \sin 2\theta + \cos 2\theta \right)$$

Thus, if observation is made of the polarization parallel to the beam axis ( $\theta = 0$ ) or perpendicular to the beam axis ( $\theta = 90^\circ$ ) we see that

$$A = \pm \frac{s(0) - s(\infty)}{s(\infty)}$$
, respectively; in other words the relative amplitude of the Hanle or zero field level crossing signal gives the alignment. This result is independent of the observation limits,  $t_1$ ,  $t_2$ . For the  $^3D_{1,2,3}$  state additional modulation terms occur corresponding to the fact that there are three  $g_J$  factors. In addition modulations due to mixing of fine structure and zeeman frequencies occur, but the latter do not contribute to the zero-field level crossing signals. The interpretation of the  $^3D$  signals is otherwise the same as for the  $^1D$  states. In beam-foil experiments it is not usually practical to extend the limits of observation to many lifetimes. This is so because of the high velocity of the atoms. For example, a 40 kV  $^4\text{He}^+$  ion incident on a carbon foil of  $6 \mu\text{g}/\text{cm}^2$  emerges from the foil with an energy of 36 kV and a velocity of  $1.3 \times 10^8$  cm/sec so that 1 cm corresponds to 7.7 nsec. Considerations of magnetic field uniformity impose a severe limit on the maximum detector-foil separation which in the present experiment was 7 cm corresponding to an upper limit of 59 nsec. When the limits of observation do not extend to infinity, modulations occur in the wings of the level crossing signal. This is shown in Fig. 1 where we have plotted the zero field level crossing signal for a  $^1D_2$  state for different values of  $t_2$ . It is seen that when  $t_2 = 1$  lifetime the modulations are already considerably suppressed and we have essentially the Hanle signal. Curve fitting was used to determine the alignment when inspection did not suffice. The measurements reported here also yield lifetime information for the states studied; however, we are presently concerned only with the alignment.

Details of the experimental technique have been described elsewhere,<sup>5,6</sup> and we review them here in brief. A 40 kV  ${}^4\text{He}^+$  ion beam from the Berkeley mass separator was incident on a thin carbon foil of 6.0 or 6.7  $\mu\text{g}/\text{cm}^2$  density and the light emitted downstream by neutral  ${}^4\text{He}$  atoms observed through a linear polarizer by a cooled photomultiplier. Narrow band (25 Å) interference filters were used to select the appropriate line. A magnetic field was applied perpendicular to the beam axis and along the direction of observation. The field intensity was stepped synchronously with the advance of a multichannel scalar where the signal was stored. The magnetic field intensity covered a range of -6 to +6 gauss. This range was covered a predetermined number of times for each foil-detector separation starting with the extreme separation of 7 cm. In this way the "quantum beat" signal was obtained. The foil position was then advanced downstream by a small increment and the measurement repeated for the same number of predetermined field sweeps, the photon counts being added to those taken at the previous foil position. This process was repeated until the foil position coincided with the detector. The direction of travel was then reversed. A sufficient number of position and magnetic field scans were taken to average out beam fluctuations and the effects of foil aging. The beam intensity was generally very stable and typically varied by  $\lesssim 10\%$  during the course of a run. Beam currents of  $\sim 3.5 \mu\text{A}$  were used, and the foil lifetime was 20-30 minutes. Fresh foils of the same nominal thickness and from the same batch were introduced as needed by means of a circular foil holder on which 10 foils



were mounted. Generally one to three foils sufficed for a measurement. Counting rates varied from  $\sim 350/\text{sec}$  to  $20,000/\text{sec}$  depending on the transition and foil position. A schematic of the experiment is shown in Fig. 2. A cesium optical pumping magnetometer was used to monitor the magnetic field. The magnetometer was placed in a Helmholtz coil connected in series with the magnetic field coils of the beam-foil apparatus. The field in the beam-foil region was calibrated against the magnetometer.

Table I summarizes the alignment measurements. In Fig. 3 we show a typical beat and Hanle signal for the  $3^3D_{1,2,3}$  state. Counting errors in all cases contributed an uncertainty of  $< 1/2\%$  to the percentage alignment. The alignment measurements varied by  $\sim 1\%$  from foil to foil and from day to day and this is reflected in the errors. This variation we believe to be due to the condition of the foil. We have observed structural variations between some foil batches, and this plus contamination of the foil in preparation, in handling, or in the vacuum system of the apparatus may be responsible for the variations.

We gratefully acknowledge the assistance of Herman Robinson and Elinor Parker for helping with the data acquisition.

### References

\* Work performed under the auspices of the U. S. Atomic Energy Commission and the Office of Naval Research.

1. S. Bashkin, W. S. Bickel, D. Fink, and R. K. Wangsness, Phys. Rev. Letters 15, 284 (1965); T. Hadeishi, Phys. Rev. Letters 21, 957 (1968).
2. W. S. Bickel and S. Bashkin, Phys. Rev. 162, 12 (1967); see also Proceedings of the 2nd Intl. Conf. on Beam-Foil Spectroscopy, Nucl. Instr. and Methods (1970) for additional references.
3. C. H. Liu, S. Bashkin, W. S. Bickel and T. Hadeishi, Phys. Rev. Letters 26, 222 (1971).
4. D. A. Church, M. Druetta, and C. H. Liu, Phys. Rev. Letters 27, 1673 (1971).
5. T. Hadeishi, M. C. Michel, J. Yellin, and E. Geneux, Proceedings of the 3rd Intl. Conf. on Beam-Foil Spectroscopy (to be published).
6. J. Yellin, T. Hadeishi, and M. C. Michel, Lawrence Berkeley Laboratory Report LBL-1608, January 1973; and Phys. Rev. Letters 30, 417 (1973).

Table 1

n	$^1D$	$\lambda(\text{\AA})$	$^3D$	$\lambda(\text{\AA})$
3			$3.6^* \pm 1.5$	5876A
4	$12.0 \pm 1.8$	4922	$2.9 \pm 1.5$	4473
5	$9.4 \pm 1.4$	4388	$4.0 \pm 1.6$	4026
6	$4.3^* \pm 1.9$	4144	$5.0 \pm 1.8$	3820

\*These values were based on the quantum beat signal only.

Caption: Measured percentage alignment for the singlet and triplet D states.

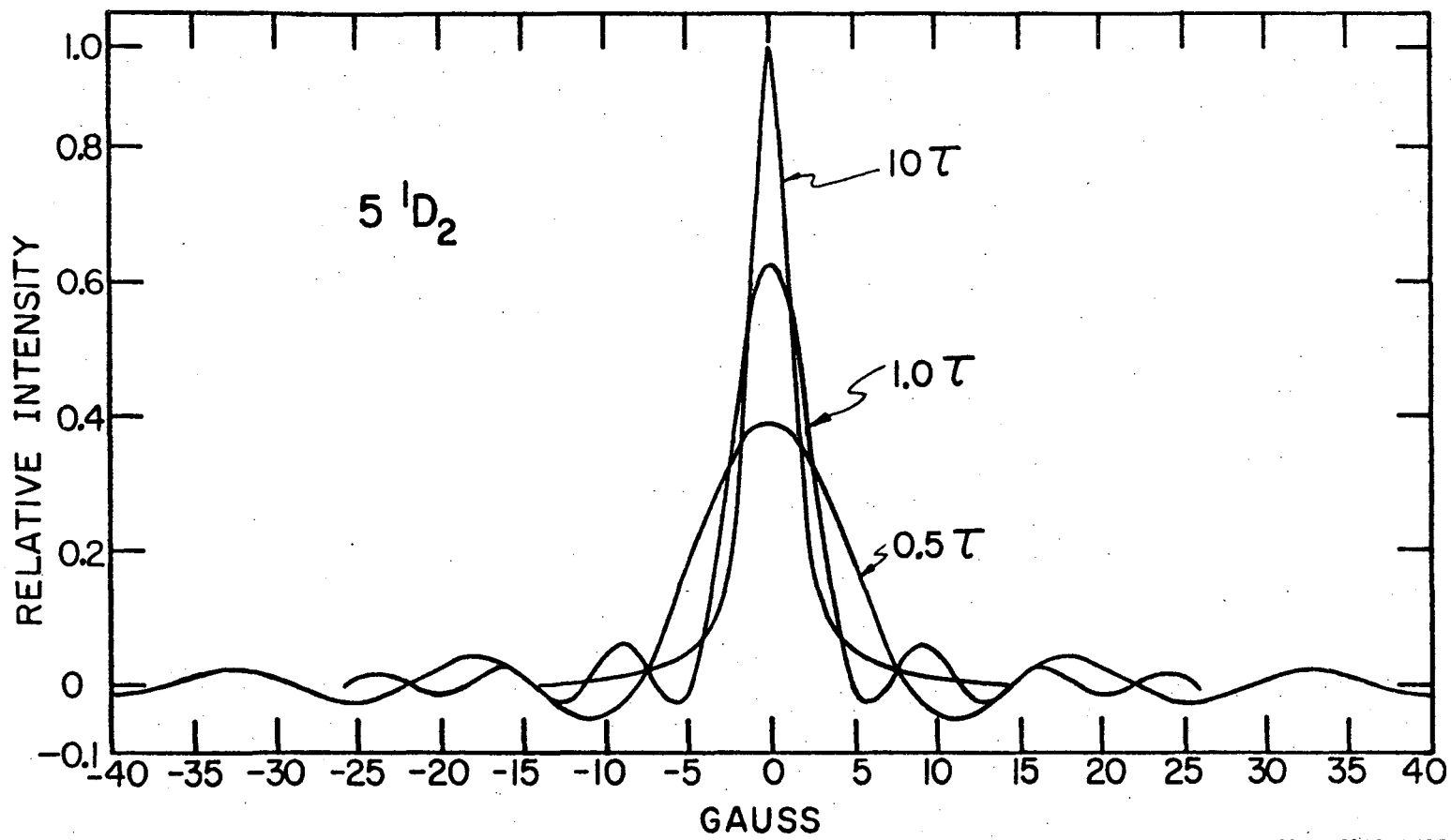
$\lambda$  is the wavelength of the transition observed -  $n \ ^3D_{1,2,3} - 2 \ ^3P_{2,1,0}$  and  $n \ ^1D_2 - 2 \ ^1P_1$ .

## FIGURE CAPTIONS

Fig. 1. Computed line shape for the zero field level crossing signal of the  $5^1D_2$  state of  $^4\text{He}$ . The lifetime of the state was taken as  $\tau = 49$  nsec. The lower limit of integration  $t_1 = 0$  and the upper limit  $t_2$  is shown on the figure.

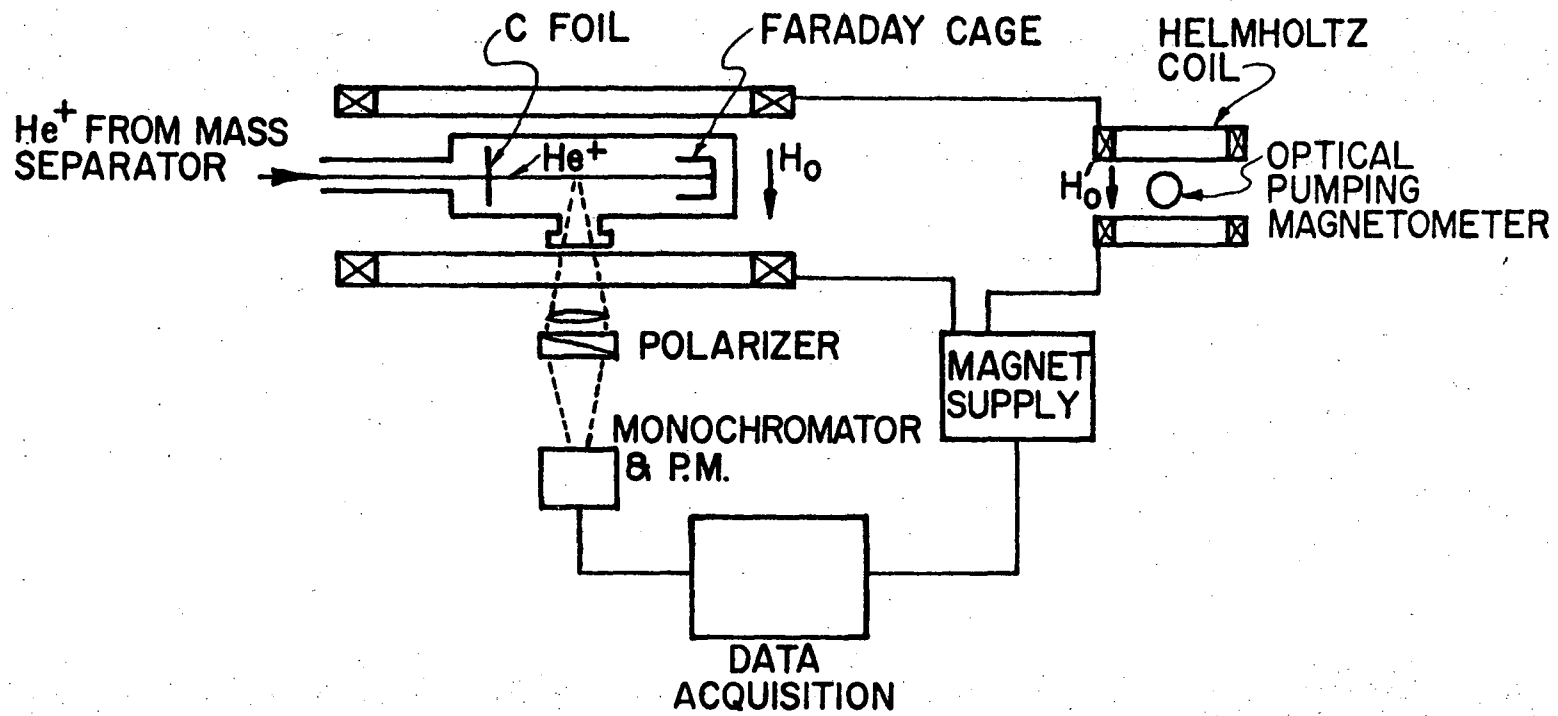
Fig. 2. Experimental apparatus.

Fig. 3. Alignment signal for the  $5^3D_{1,2,3}$  state of  $^4\text{He}$ . (a) "quantum beat" signal. The detector viewed a 7 mm portion of the beam 7 cm downstream from the foil. Thus this is not a pure beat signal but really a delayed Hanle signal with the observation time extending from 51.2 nsec to 56.6 nsec. (b) Zero field level crossing (Hanle) signal. The observation extended from zero foil-detector separation to 7 cm foil-detector separation corresponding to about one lifetime of observation. Note the modulations in the wings. The polarizer axis was perpendicular to the beam axis hence the inverted signal.



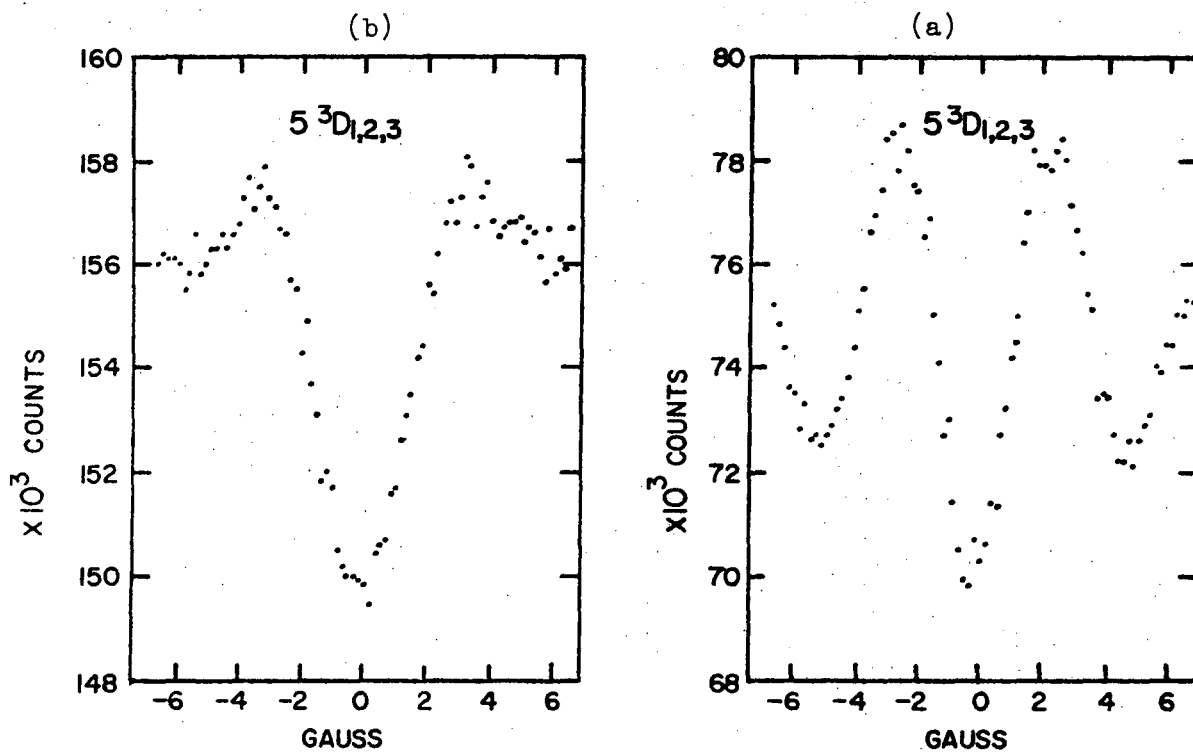
XBL 7212-7485

Fig. 1



XBL 729-1917

Fig. 2



XBL 7212-7484

Fig. 3

LEGAL NOTICE

*This report was prepared as an account of work sponsored by the United States Government. Neither the United States nor the United States Atomic Energy Commission, nor any of their employees, nor any of their contractors, subcontractors, or their employees, makes any warranty, express or implied, or assumes any legal liability or responsibility for the accuracy, completeness or usefulness of any information, apparatus, product or process disclosed, or represents that its use would not infringe privately owned rights.*



TECHNICAL INFORMATION DIVISION  
LAWRENCE BERKELEY LABORATORY  
UNIVERSITY OF CALIFORNIA  
BERKELEY, CALIFORNIA 94720