

UCSF

UC San Francisco Previously Published Works

Title

CREBBP and STAT6 co-mutation and 16p13 and 1p36 loss define the t(14;18)-negative diffuse variant of follicular lymphoma

Permalink

<https://escholarship.org/uc/item/39n9r2kj>

Journal

Blood Cancer Journal, 10(6)

ISSN

2044-5385

Authors

Xian, Rena R

Xie, Yi

Haley, Lisa M

et al.

Publication Date

2020

DOI

10.1038/s41408-020-0335-0

Copyright Information

This work is made available under the terms of a Creative Commons Attribution License, available at <https://creativecommons.org/licenses/by/4.0/>

Peer reviewed

ARTICLE

Open Access

CREBBP and STAT6 co-mutation and 16p13 and 1p36 loss define the t(14;18)-negative diffuse variant of follicular lymphoma

Rena R. Xian^{1,2,3}, Yi Xie^{4,5}, Lisa M. Haley¹, Raluca Yonescu¹, Aparna Pallavajjala¹, Stefania Pittaluga⁴, Elaine S. Jaffe⁶, Amy S. Duffield^{1,2}, Chad M. McCall^{1,6}, Shereen M. F. Gheith⁷ and Christopher D. Gocke^{1,2}

Abstract

The diffuse variant of follicular lymphoma (dFL) is a rare variant of FL lacking t(14;18) that was first described in 2009. In this study, we use a comprehensive approach to define unifying pathologic and genetic features through gold-standard pathologic review, FISH, SNP-microarray, and next-generation sequencing of 16 cases of dFL. We found unique morphologic features, including interstitial sclerosis, microfollicle formation, and rounded nuclear cytology, confirmed absence of t(14;18) and recurrent deletion of 1p36, and showed a novel association with deletion/CN-LOH of 16p13 (inclusive of *CREBBP*, *CIITA*, and *SOCS1*). Mutational profiling demonstrated near-uniform mutations in *CREBBP* and *STAT6*, with clonal dominance of *CREBBP*, among other mutations typical of germinal-center B-cell lymphomas. Frequent *CREBBP* and *CIITA* codeletion/mutation suggested a mechanism for immune evasion, while subclonal *STAT6* activating mutations with concurrent *SOCS1* loss suggested a mechanism of BCL-xL/BCL2L1 upregulation in the absence of *BCL2* rearrangements. A review of the literature showed significant enrichment for 16p13 and 1p36 loss/CN-LOH, *STAT6* mutation, and *CREBBP* and *STAT6* comutation in dFL, as compared with conventional FL. With this comprehensive approach, our study demonstrates confirmatory and novel genetic associations that can aid in the diagnosis and subclassification of this rare type of lymphoma.

Introduction

Follicular lymphoma (FL) is the second most common nodal non-Hodgkin lymphoma accounting for ~20% of all lymphomas¹. The proliferation of germinal center B-cells (GCB) forming abnormal follicles coupled with translocation of the antiapoptotic gene *BCL2* with *IGH* resulting in t(14;18)(q32;q21) are diagnostic hallmarks of FL¹. However, there are exceptions, as ~5% of low-grade follicular lymphoma (LGFL) show a predominantly diffuse growth pattern^{2,3}, and ~10% of FL lack t(14;18)¹, most of which represent high-grade disease.

The 2016 WHO classification recognizes several variants and related entities of FL, the latter of which is designated as conventional follicular lymphoma (cFL). The morphologically low-grade spectrum includes in-situ follicular neoplasia, duodenal-type FL, and the diffuse FL variant (dFL) with the former two entities consistently demonstrating t(14;18) *BCL2/IGH* rearrangements. The morphologically high-grade spectrum includes testicular FL and pediatric-type FL (pFL), neither of which carry *BCL2/IGH* rearrangements. Genomic analysis of cFL has shown that in addition to t(14;18), a number of recurrent copy number variants (CNVs)^{4–10} and somatic mutations can be found^{11–19}, such as CNVs of 1p36, mutations of epigenetic regulators *KMT2D*, *CREBBP*, and *EZH2*, and mutations of *TNFRSF14*. The genetic abnormalities found in cFL serve as the basis against which variant subtypes can be compared.

Correspondence: Christopher D. Gocke (cgocke1@jhmi.edu)

¹Department of Pathology, Johns Hopkins Medical Institutions, Baltimore, MD, USA

²Department of Oncology, Sidney Kimmel Comprehensive Cancer Center, Johns Hopkins Medical Institutions, Baltimore, MD, USA

Full list of author information is available at the end of the article

© The Author(s) 2020



Open Access This article is licensed under a Creative Commons Attribution 4.0 International License, which permits use, sharing, adaptation, distribution and reproduction in any medium or format, as long as you give appropriate credit to the original author(s) and the source, provide a link to the Creative Commons license, and indicate if changes were made. The images or other third party material in this article are included in the article's Creative Commons license, unless indicated otherwise in a credit line to the material. If material is not included in the article's Creative Commons license and your intended use is not permitted by statutory regulation or exceeds the permitted use, you will need to obtain permission directly from the copyright holder. To view a copy of this license, visit <http://creativecommons.org/licenses/by/4.0/>.

dFL is the only LGFL variant lacking t(14;18). This entity was first described in 2009 in 35 cases as an unusual type of LGFL with a predominantly diffuse growth pattern, characteristic immunophenotype, and near-uniform deletion of chromosome 1p36³. This variant of FL was distinguished from LGFL with a predominantly diffuse growth pattern, as the former consistently lack the characteristic *BCL2* rearrangement, whereas the latter consistently demonstrate t(14;18). Besides the genetic difference, the 2009 description of dFL also found characteristic clinical features, such as frequent groin/inguinal site of presentation, bulky low clinical stage disease, and good prognosis. Subsequent to this description, two other series evaluating 11 cases²⁰ and 6 cases²¹ of dFL confirmed recurrent 1p36 abnormalities and/or *TNFRSF14* mutations²⁰, as well as mutations of *CREBBP* and *STAT6*^{20,21}. The aims of the present study were to use a comprehensive approach to build upon existing, yet incomplete, literature, and determine unifying pathologic and genetic abnormalities. Findings from this study improve our understanding of the relationship between dFL and cFL, the molecular pathogenesis of dFL, and identifies potential molecular markers that may aid in the diagnosis and accurate subclassification of this rare variant of FL.

Methods

Pathologic case selection

Excisional biopsies were selected from the pathology archives of the Johns Hopkins Hospital (JHH) and the National Cancer Institute (NCI) after appropriate institutional review board approval. The JHH archives were searched from 1984 to 2013 for all cases of LGFL with a predominantly diffuse growth pattern ($\geq 75\%$), occurring in an inguinal/groin site, and showing coexpression of CD23. The NCI archives were searched from 2000 to 2014 for cases citing the original Katzenberger et al. description³. *BCL2* protein expression by immunohistochemistry and *BCL2* rearrangement status for FISH were not used as selection criteria. Cases with components of histologic grade 3 or diffuse large B-cell lymphoma (DLBCL), or with high proliferation indices ($>30\%$) were excluded. The histologic and immunohistochemical stains, and available clinical and ancillary data, were reviewed in concert by the study authors with consensus agreement of the final diagnoses.

Fluorescence in-situ hybridization

FISH using the Vysis LSI *IGH/BCL2* dual color dual fusion probe (Abbott Molecular, Des Plaines, IL) was performed on all cases (per manufacturer's protocol) without clinically available FISH analysis using formalin-fixed paraffin embedded (FFPE) tissue. Since histologic sectioning results in overlapping cells, only dual fusion signals identified in the same plane were considered as

true fusions. Detailed methods can be found in Supplementary Information.

SNP-microarray analysis

DNA was extracted using 4–10 unstained slides of FFPE tissue using the Pinpoint Slide DNA Isolation system (Zymo Research, Orange, CA). In brief, unstained slides were deparaffinized with xylene followed by tissue dissection and Proteinase K digestion. DNA cleanup was performed using the QIAamp DNA mini kit with the QIAcube instrument (QIAGEN, Valencia, CA). SNP-microarray using the HumanCytoSNP12 BeadChip platform (Illumina, San Diego, CA), which assesses $\sim 300,000$ polymorphic loci, was performed per manufacturer's protocol. Analysis was completed using KaryoStudio (Illumina, San Diego, CA) and Nexus Copy Number (BioDiscovery, Hawthorne, CA). SNP and gene annotations were compared against the National Center for Biotechnology Information (NCBI) genome build 37 (GRCh37/hg19). CNVs were determined by independent and consensus review by R.R.X and C.D.G. Detailed interpretive criteria can be found in Supplementary Information.

Targeted next-generation sequencing analysis

Using 200 ng of extracted DNA from the above analysis, DNA hybrid capture libraries were prepared using an Agilent SureSelect-XT (Agilent Technologies, Santa Clara, CA) custom-designed target enrichment kit evaluating full-gene sequences of 641 cancer-related genes (see Supplementary Information), as previously described²². Following DNA quality control, shearing and library preparation, next generation sequencing was performed on an Illumina HiSeq 2500 (Illumina Biotechnology, San Diego, CA) using 2×100 bp Rapid Run v2 paired end chemistry. Using vendor supplied software, FASTQ files were generated. All reads were aligned to NCBI GRCh37/hg19 using the Burrows-Wheeler alignment algorithm v0.7.10. Piccard Tools v1.119 was used for SAM to BAM conversion. The final BAM file was used for variant calling using a custom pipeline MDLVC v.6²² and HaplotypeCaller v3.3. Variants with low variant allele frequency (VAF) ($<5\%$) and variants found in a reference pool of normal samples were excluded. Samples (cases 5 and 16) with lower quality sequencing data had an additional VAF filter of 9% applied. Variants meeting quality criteria were then annotated using the COSMIC database v82, dbSNP v150, Annovar (07042018), and Ensembl variant effect predictor²³. Manual review of variant calls was performed using the Broad Institute's Integrated Genomics Viewer v.2.3.4. Tumor mutation burden (TMB) was calculated using a subset of the sequenced genes per published methods²⁴. Detailed NGS and bioinformatics methods can be found in Supplementary Information.

Variant significance was determined by cross-referencing COSMIC (v88), gnomAD (r2.0.2) and

ClinVar databases factoring in VAF, functional consequence, level of evidence in the respective databases, evidence of the variant in hematolymphoid malignancies, presence of other variants affecting the same amino acid, and mutational frequency of the gene in hematolymphoid malignancies. Using this rubric, each variant was assigned into one of four categories: likely somatic, cannot exclude somatic/possibly somatic, cannot exclude somatic/possibly germline, and likely germline. Within the “cannot exclude somatic” category, variants were grouped into the possibly germline category if the gene in question had not been reported to be mutated in either dFL^{20,21}, pFL²⁵, cFL^{14,19}, or MZL²⁶. Variants assigned to the “likely somatic” and “cannot exclude somatic/possibly somatic” categories were included for further analyses.

Tumor clonality and cellularity analysis

Tumor clonality and subclonality analysis was assessed based on several formulas that take into account the admixture of lymphoma cells with normal cells, the presence of clonal and subclonal mutations, and the combined impact of CNVs and coding mutations (see Supplementary Information and supplementary Figures S1–S3). The most dominant mutation in each tumor, which accounted for the impact of co-occurring CNVs, was used to estimate tumor purity/cellularity. All other variants were divided by this number to derive the normalized subclonal representation of the mutation within the tumor. If tumor purity estimates based on VAF greatly exceeded the morphologic estimate, variants contributing to the overestimation were rereviewed for the likelihood of germline derivation and potential for undetected co-occurring CNVs. Should these variants be found, tumor purity was recalculated accordingly. If this resulted in reassignment of variants to the possibly/likely germline category, these variants were then excluded from subsequent analyses.

Statistical analysis and graphing

Statistical analyses were performed using GraphPad Prism version 8 (GraphPad Software, La Jolla, CA) and Microsoft Office Excel 2010 (Microsoft, Redmond, WA). Continuous variables were compared using parametric unpaired two-tailed *t* tests, while categorical variables were compared using Fisher’s exact test. Detailed statistical analyses are described in Supplementary Information. Mutation representation within protein domains was mapped using MutationMapper²⁷ and Lollipop²⁸.

Results

dFL shows unique pathologic features

In total, 16 cases of LGFL meeting the inclusion and exclusion criteria were identified. All cases underwent consensus review by the study authors. Summary patient

and pathologic findings are detailed in Table 1. Histologically, all cases showed $\geq 75\%$ diffuse growth with many demonstrating microfollicle formation (Fig. 1), which are miniaturized abnormal follicles predominantly composed of centrocytes lacking follicular dendritic networks. Other notable features include frequent sclerosis and interstitial fibrosis, focal preservation of normal lymph node structures, including normal germinal centers, and more rounded nuclear cytology of the lymphoma cells. Cases with microfollicles tended to have lymphoma cells with centrocyte-like nuclei within microfollicles, and lymphoma cells with more rounded nuclei outside. Immunohistochemical studies confirmed that all lymphomas expressed BCL6, CD10, and CD23, and most expressed variable BCL2. Two cases showed equivocal BCL2 staining (cases 7 and 8) due to extensive T-cell admixtures. One case was BCL2 negative (case 15). Some cases also demonstrated disparate staining patterns for BCL2 (cases 6 and 9) and CD10 (case 9) within and outside of microfollicles.

Chromosome 16p13 and 1p36 are recurrently altered in the absence of BCL2/IGH

FISH for *IGH/BCL2* was completed for 15 of 16 cases. All interpretable results showed two green (*IGH*) and two orange (*BCL2*) signals without evidence of fusion (Fig. 2c). SNP-microarray studies were performed on all cases (Fig. 2a, b) with one case failing quality control. Total CNVs observed per sample ranged from 0–9 (median 2; 95% CI 2–5). Only one sample (case 12) showed no CNVs. Recurrent alterations present in ≥ 4 samples (Fig. 2d) included loss/CN-LOH of 16p13.3 (9 loss and 1 CN-LOH, 66.7%), loss/CN-LOH of 1p36.3 (4 loss and 3 CN-LOH, 46.7%), gain/CN-LOH of 8q24 (4 gain and 1 CN-LOH, 33.3%), gain of 8p22 (4, 26.7%), and gain/CN-LOH of 8q (3 gains and 1 CN-LOH, 26.7%). Six cases (6/15, 40.0%) showed abnormalities of both 1p36 and 16p13 (Fig. 3). The minimal deleted region on 16p (16p13.3, 7.1 Mb) contains 238 genes, including *CREBBP*. Nine out of ten cases with 16p13.3 abnormalities demonstrated slightly larger CNVs that also included *CIITA* and *SOCS1*. The minimal deleted region on 1p (1p36.33–1p36.31, 5.1 Mb) contains 101 genes, including *TNFRSF14*. Full list of CNVs can be found in Supplementary Table S1.

CREBBP and *STAT6* are highly recurrently comutated

Next-generation sequencing (NGS) was performed in all cases. A total of 161 “likely somatic” and “cannot exclude somatic” variants were identified in 56 genes. 157 (97.5%) of these variants were classified as likely somatic, while 4 (2.5%) were classified as cannot exclude somatic. Clonality and cellularity analysis (see below) reclassified two “likely somatic” variants (*KMT2C* and *SPEN*) and two “cannot exclude somatic” variants (*KMT2C* and

Table 1 Patient demographic and pathologic characteristics.

Case no.	1	2	3	4	5	6	7	8	9	10	11	12	13	14	15	16	Total
Age	45	57	64	38	51	44	46	38	59	48	56	66	66	67	50	56	53.2 (mean)
Gender	F	F	M	M	F	F	F	F	F	M	M	M	F	F	F	F	5:11 (M:F)
Morphology																	
Diffuse growth (%)	100	>75	>75	100	100	>75	>75	>75	75	>75	>75	>75	100	>75	100	~75	75–100%
Micro-follicles	–	+	+	–	–	+	+	–	+	–	+	–	–	+	–	–	43.7%
Sclerosis	–	+	+	–	+	+	+	–	–	+	+	+	–	–	+	–	56.2%
Entrapped normal LN	+	+	–	–	–	+	+	+	–	–	–	+	–	–	–	–	37.5%
Nuclear contour	R	C	C	C	R	R&C	C	C	R	R	C	R&C	R	C	R	C	5:4 (C:R)
Immunophenotype																	
CD10	+	+	+	+	+	+	+(P)	+	+(P)/W	+	+	+	+	+	+	+	100.0%
BCL6	+	+	+	+(Fo)	NA	+	+(P)	+(Fo)	+(WP)	+(W)	+	+	+	+	+	NA	100.0%
BCL2	+	+(V)	+	+	+	+(W)/E	E	E	+/-	+	+	+	+	+	–	+	81.2%
CD23	+(P)	+	+	+	+	+(WP)	+(P)	+(Fo)	+/-	+(Fo)	+	+	+	+(W)	+	+	100.0%
FDC network	–	–	NA	–	–	–	Fo	Fo	–	–	Fo	–	–	Fo	–	Fo W	31.2%
Ki-67 proliferation (%)	<30	30–40	10	<10	NA	NA	20	NA	<10	10–20	NA	20–30	NA	10–20	NA	10–20	15–20% (mean)

C cleaved, E equivocal, F female, Fo focal, FDC follicular dendritic cell, LN lymph node, M male, NA not available, P patchy; R round, V variable, W weak; _/_: When staining pattern of diffuse areas and micro-follicles differed, the “_/_” designation is used with the diffuse staining pattern on the left and the micro-follicle staining pattern on the right.

NOTCH1) as possibly germline, and reclassified the remaining two “cannot exclude somatic” variants (*CSMD3* and *CARD11*) as possibly somatic. Once the possibly germline variants were removed, along with other “likely germline” variants, a total of 157 likely/possibly somatic mutations were identified in 56 genes (Fig. 4). The number of mutations identified in each case ranged from 6 to 18 (median 9.5, 95% CI 7–11). Potential aberrant somatic hypermutation, suggested by the presence of multiple nondeleterious mutations with similar variant allele frequencies occurring within a single exon and allele, was identified in 3 cases (cases 6, 10 and 11) involving *BCR*, *SOCS1*, and *ACTB*, respectively. TMB was calculated for 14 of 16 cases, which showed uniformly low, and occasionally intermediate, TMB ranging from 2.6/Mb to 13.2/Mb (median of 4.4/Mb, 95% CI 2.6–6.1/Mb).

CREBBP was nearly-uniformly mutated (15/16 cases, 93.7%) (Fig. 4 and Supplementary Table S2). This was followed by *STAT6* (14/16 cases, 87.5%), *TNFRSF14* (11/16 cases, 68.7%), *FOXO1* (11 mutations in 7/16 cases, 43.7%), *KMT2D* (6/16 cases, 37.5%), *SOCS1* (6/16 cases, 37.5%), and *EZH2* (5/16 cases, 31.2%). Incorporating CNV

data, 11 of 16 cases (68.7%) showed bi-allelic alterations of 16p13.3 and/or *CREBBP*, and 8 of 16 cases (50.0%) showed bi-allelic alterations of 1p36.3 and/or *TNFRSF14*. Mutations affecting *CREBBP* were mostly missense (12 of 18, 66.7%) or in-frame insertion/deletion (4 of 18, 22.2%) events centered in the HAT histone acetylation protein domain, while mutations affecting *STAT6* were all missense changes occurring in the DNA binding domain (Fig. 5). Thirteen cases demonstrated *CREBBP* and *STAT6* comutation (13/16, 81.2%). Lymphomas carrying mutations in both genes harbored fewer total alterations compared with lymphomas lacking comutations (Fig. 4a). This observation held true for the number of mutations (median 8, ranging from 6 to 11 vs. median 18, ranging from 12 to 18; p value < 0.0001), CNVs (median 2, ranging from 0 to 5 vs. median 6, ranging from 3 to 9, p value of 0.0191), and total alterations (median 10, ranging from 7 to 16 vs. median 24, ranging from 14 to 27, p value of 0.0006). Clonality and cellularity assessment (see below) showed that these differences could not be accounted for by lower tumor purity in the comutated cases (Fig. 6a). Even though the number of mutations and CNVs differed between these two groups, TMB did not differ

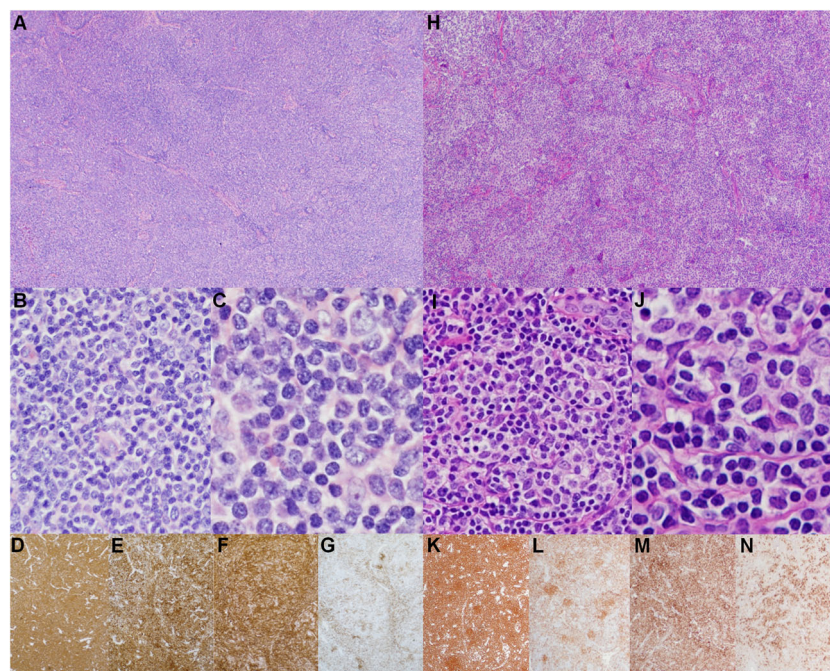


Fig. 1 Pathologic features of dFL. Representative histologic and immunohistochemical features in a case with a purely diffuse growth pattern (Case 1; **a–g**) and a case with a microfollicular growth pattern (Case 6; **h–n**). Low power (2x) H&E image demonstrating complete nodal architectural effacement and replacement by a diffuse lymphoid proliferation (**a**) or replacement by a vaguely-nodular proliferation of microfollicles (**h**). A 20X H&E image demonstrating that the proliferation comprises a mixture of small lymphocytes and a few scattered large transformed cells (**b, i**). A 40X H&E image showing small lymphocytes with rounded nuclear contours (**c**) and small lymphocytes with more angulated and irregular nuclei resembling centrocytes (**j**) that are admixed with occasional large cells resembling centroblasts. Low power (2x) immunohistochemical images showing staining patterns for CD20 (**d, k**), CD10 (**e, l**), BCL2 (**f, m**), and CD23 (**g, n**).

significantly (median 4.4 vs. median 5.3, p value of 0.1703). Additional comparisons can be found in Supplementary Information (Supplementary Figure S4).

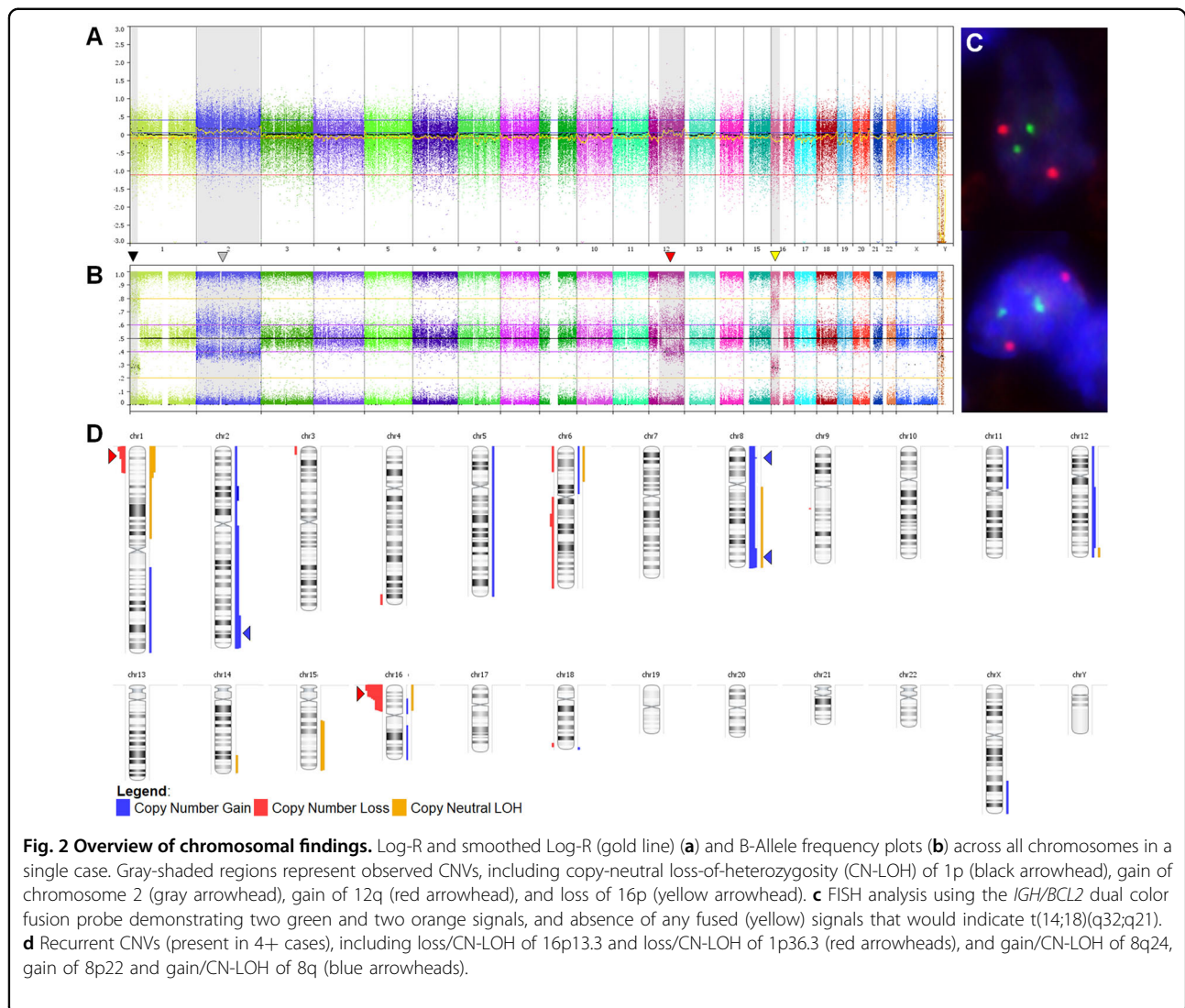
CREBBP mutations are clonally dominant

Integrating both mutation VAFs and (co-occurring) CNV B-allele frequencies, the cellular representation of individual alterations was calculated (Fig. 6b), which enabled estimation of tumor purity/cellularity (Fig. 6a), and more accurate variant significance classification. This analysis showed that *CREBBP* mutations are dominant clonal events in most cases (Fig. 6c) accounting for 78.1% of tumor cells (median 95% CI 49.7–99.0%). In contrast, other recurrently mutated genes frequently represented subclonal events with *STAT6* mutations accounting for 54.3% of tumor cells (median 95% CI 38.9–70.0%, $p = 0.0041$), *TNFRSF14* mutations accounting for 59.9% of tumor cells (median 95% CI 45.2–67.9%, $p = 0.0380$), *KMT2D* mutations accounting for 35.5% of tumor cells (median 95% CI 32.0–59.5%, $p = 0.0012$), *EZH2* mutations accounting for 55.5% of tumor cells (median 94% CI 44.8–61.5%, $p = 0.0301$), *CARD11* mutations accounting for 49.4% of tumor cells (median 94% CI 36.8–69.2%, $p =$

0.0219), and *EP300* mutations account for 44.0% of tumor cells (median 88% CI 37.5–57.6%, $p = 0.0117$).

CREBBP and STAT6 comutation and 16p13 and 1p36 loss represent unique features of dFL

In order to determine if the recurrent CNV and mutational findings from the present study are enriched in dFL, a detailed literature review was performed (Table 2). Each recurrent, and select combinations of, alteration found in the current report was pooled with less comprehensive analyses from three previous studies of dFL^{3,20,21} to identify unique features of dFL. Of note, two cases from the Siddiqi et al. study were not included, as those cases had demonstrable *BCL2/IGH* rearrangements. The aggregate frequencies of particular alterations found in dFL were contrasted with previously published reports for cFL^{4–19} and MZL^{26,29–41}. Although the previous studies describing CNVs in cFL used a variety of techniques, most of these studies (8/13, 61%) were performed using SNP-array platforms similar to the present method indicating that the results obtained in these prior studies should be comparable to our findings. Compared with cFL and MZL, 16p13 and/or 1p36 abnormalities are far more



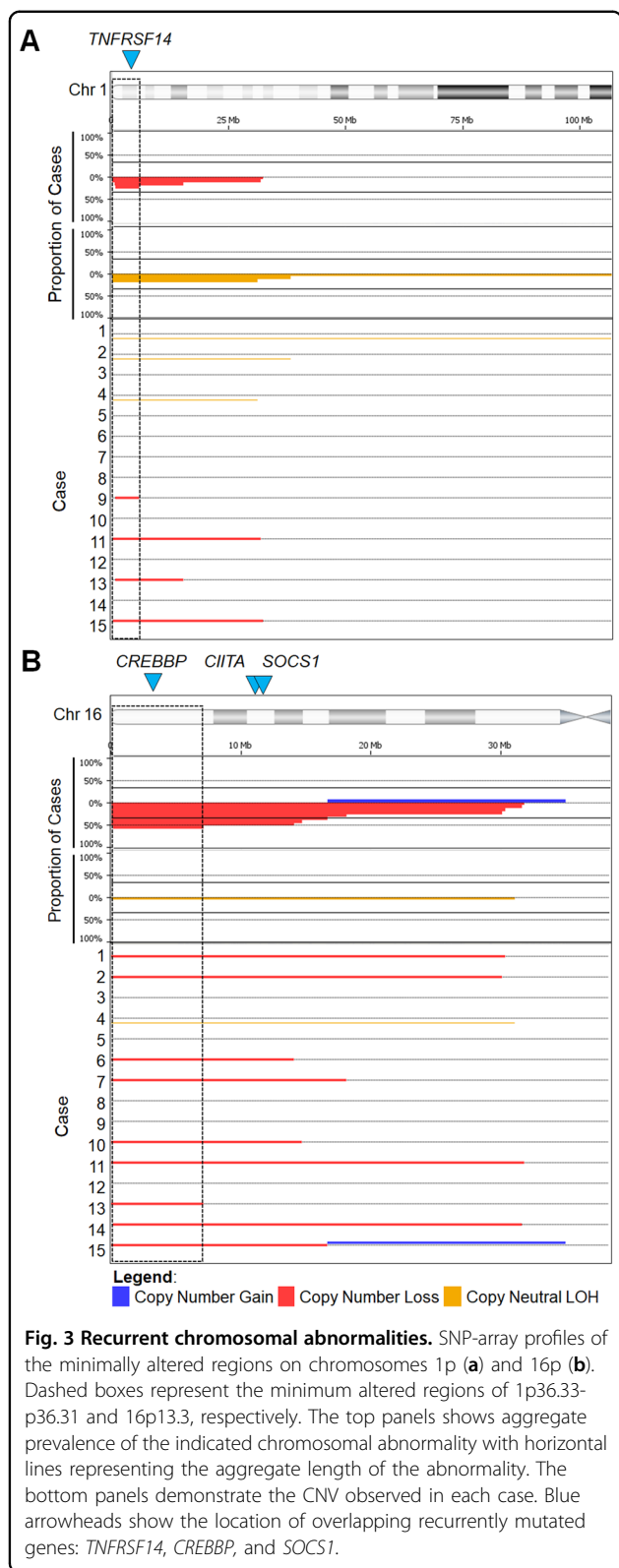
frequent in dFL. *CREBBP* mutations are slightly more common in dFL, and *STAT6* mutations are much more common in dFL. *CREBBP* and *STAT6* mutation is particularly enriched in dFL. All recurrent alterations found in dFL are statistically significantly under-represented in MZL (Table 2).

Discussion

The present study of 16 cases of dFL is the largest series to include detailed pathologic, chromosomal, and NGS analyses that reveal novel, and unifying, pathologic and genetic findings. Not only do our findings support continued classification of dFL a variant of cFL, our findings also show how comprehensive molecular profiling can aid in the differential diagnosis and workup of low-grade B-cell lymphoma (LGBCL).

Pathologic analyses identified novel morphologic features of dFL, such as frequent sclerosis, microfollicle

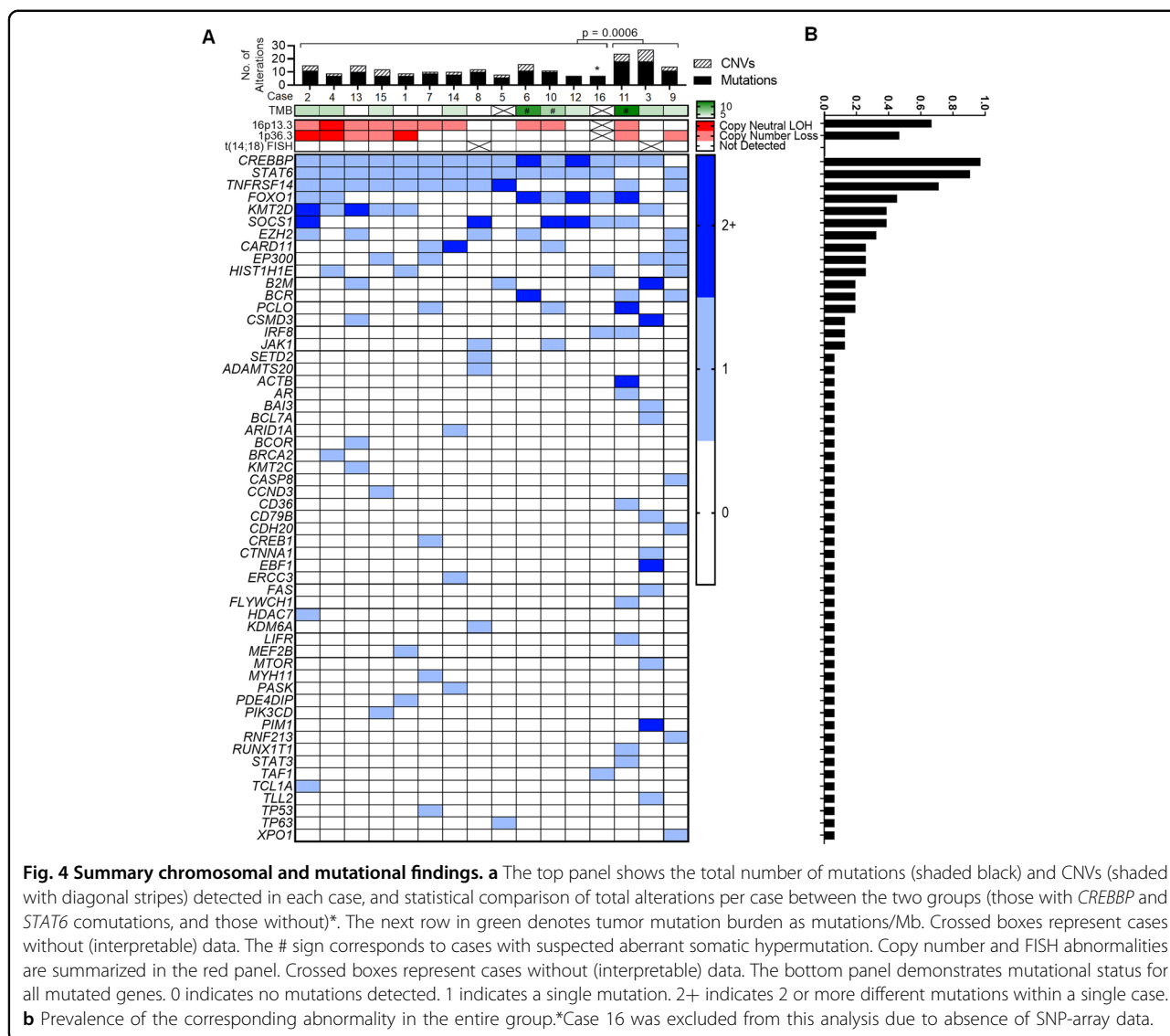
formation, and rounded nuclear cytology, in addition to the known features of diffuse histology, focal preservation of normal lymph node structures, coexpression of CD23, and variable expression of *BCL2*^{3,20}. Microfollicles lack follicular dendritic networks rendering them distinct from typical follicles/nodules found in cFL. To our knowledge, this growth pattern has only been associated with dFL¹, and has not been described in any other type of LGBCL to date. Although CD23 was used as a selection criteria for 6 of 16 cases, all cases showed CD23 coexpression suggesting that this may be a unifying feature of dFL, whereas cFL is only occasionally CD23 positive^{42,43}. Variable *BCL2* expression in the absence of *BCL2/IGH* rearrangements suggests alternative mechanisms of *BCL2* up-regulation on the DNA^{44,45} or transcriptional^{46,47} level, although we did not find either copy number gains of the *BCL2* locus or mutations of *BCL2* in dFL.



Our data demonstrated new associations of loss/CN-LOH of 16p13 and CN-LOH of 1p36, and confirmed the reported absence of t(14;18) and recurrent loss of 1p36^{3,20}. However, the frequency 1p36 abnormalities in our series was far lower than originally published³, but is similar to the rate reported by Siddiqi et al.²⁰. This difference may be related to selection, sampling, and/or technical biases. Unlike the Katzenberger et al.³ report where CD23 positivity was found in approximately two-thirds of the lymphomas, there was uniform expression of CD23 in this and the Siddiqi et al. series, which could skew the distribution of the genetic findings. Alternatively, with larger numbers of dFL being studied, the full spectrum of chromosomal abnormalities is emerging unmasking a lower prevalence of 1p36 deletion. Finally, technical bias could also account for these differences, as the original report used FISH, which has a superior analytical sensitivity (5% of nuclei) to both aCGH and SNP-microarray. While all of the cases we studied had at least 15% tumor cells, it is plausible that subclonal loss of 1p36 may be missed by our approach. Irrespective of the reason for this discordance, combined data suggest that loss of 1p36 alone is not sufficient, or specific, for dFL, especially if array-based techniques or NGS are used. Unlike previous studies, the most predominant CNV observed in our series was loss/CN-LOH of 16p13, which was only found in two cases (22.2%) in the Siddiqi et al. study²⁰. This apparent discrepancy may, again, be technique related, as array CGH (aCGH) used by Siddiqi et al. typically shows inferior analytical sensitivity, and cannot detect CN-LOH. Not only are 16p13 abnormalities a novel association in dFL, we also found that the minimally altered region(s) encompassed *CREBBP*, *CIITA*, and *SOCS1*, which suggests a possible cooperative mechanism for tumor immune evasion^{19,48}.

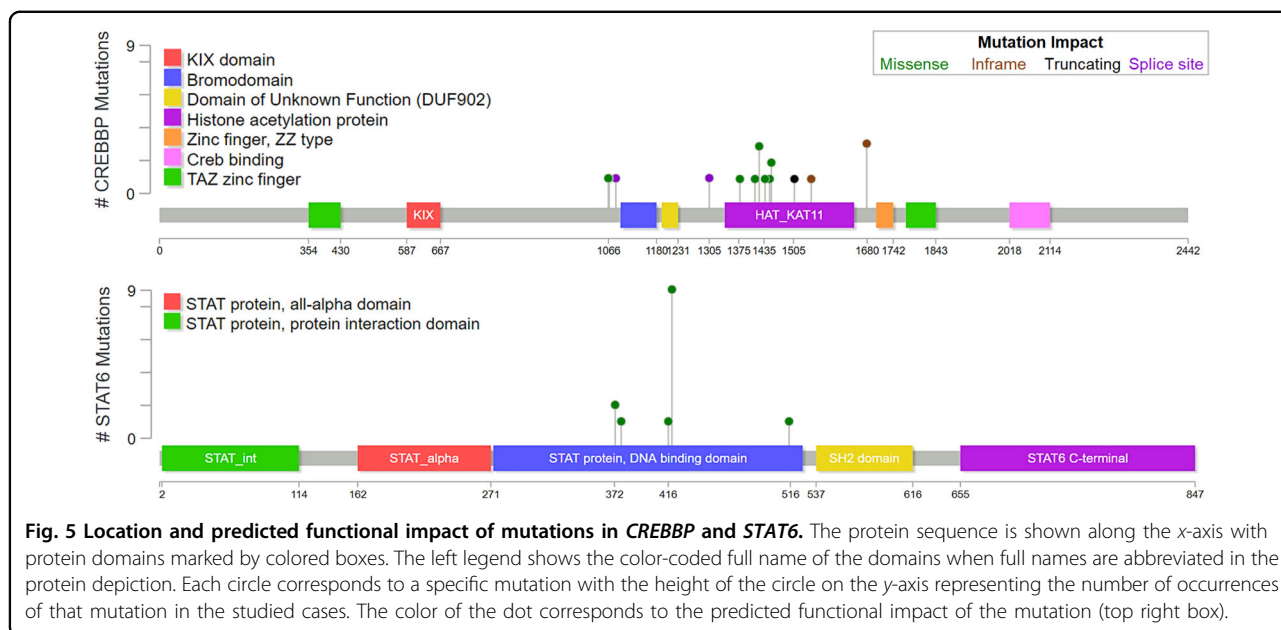
Targeted NGS showed near-uniform mutations of *CREBBP* and *STAT6* with clonal dominance of the *CREBBP* mutations suggestive of a founder event. The mutational profiles of dFL in our series showed frequent mutations in genes implicated in GCB derived lymphomas^{11,12}, including *CREBBP*, *TNFRSF14*, *KMT2D*, and *EZH2*, which offers genetic confirmation for the current classification of dFL as a FL variant. We did not identify MAPK pathway mutations associated with pFL^{25,49} indicating dFL shares more genetic similarities with cFL than pFL. Unlike cFL, where t(14;18) represents the founder event¹³ and *CREBBP* mutations represent subsequent driver events, our data suggest *CREBBP* mutations represent founder events in dFL in the absence of *BCL2/IGH* rearrangements.

With regard to *CREBBP* mutations, the enrichment for non-truncating mutations within the HAT domain, which leads to enzymatic loss of protein function¹², is similar to what has been previously described in cFL⁵⁰. Unlike previous reports of cFL or GCB DLBCL^{12,14}, which show



majority mono-allelic loss of *CREBBP*, our series identified majority bi-allelic loss of *CREBBP*. In mice, heterozygous/haploinsufficient loss of *CREBBP* coupled with *BCL2* overexpression in B-cells leads to the development of GCB lymphomas⁵⁰. Without *BCL2/IGH*, however, other antiapoptotic mechanisms may be implicated in dFL, such as *STAT6* comutation. *STAT6* is commonly mutated in classical Hodgkin lymphoma (32%)⁵¹ and PMBL (36%)⁵², but is not typically mutated in GCB lymphomas^{11–19}. Our data show that *STAT6* mutations are always comutated with *CREBBP*, or *EP300* that forms the *CREBBP/EP300* complex, in dFL, and are frequently associated with concurrent loss of *SOCS1*. The conspicuous co-occurrence of these alterations suggest a degree of cooperativity. Similar to previous studies of GCB lymphoma^{53,54}, all of the detected *STAT6* mutations

in dFL were missense changes occurring in the DNA binding domain, which has been shown to activate JAK/STAT signaling^{53,54}. An important *STAT6* target is the *BCL-xL/BCL2L1* (*BCL2*-like antiapoptotic protein) gene⁵⁵, which is often amplified in epithelial malignancies⁵⁶. In PMBL, overexpression pSTAT6 leads to accumulation of *BCL-xL*⁵⁷, a phenomenon that may be reversed by inducing the *STAT6* negative regulator *SOCS1*^{51,57}. The concurrent gain of function of *STAT6* and loss of its negative regulator, *SOCS1*, in dFL may drive high levels of *BCL-xL* that could serve as a functional surrogate for *BCL2* excess to cooperate with *CREBBP* bi-allelic loss in the development of dFL. Future studies could evaluate the possibility that *CREBBP* loss and *STAT6* gain, possibly through *BCL-xL*, are sufficient to induce dFL-like lymphomas.



A major limitation of this study is that it is correlative, and lacks functional confirmation of the findings and the proposed interactions. Another limitation is the small sample size and lack of clinical follow-up, which is a consequence of the exceedingly rare occurrence of this lymphoma, and the frequent extramural consultative nature of the pathology review. As described earlier, the uniform inguinal location and CD23 positivity found in the present study may bias the results towards apparent unifying pathologic and molecular features. Given that these two features are commonly used as criteria to diagnose this variant of FL, only a large-scale screen of diffuse-pattern LGFL would allow identification of sufficient numbers of CD23-negative/noninguinal cases to investigate this possibility. Although some t(14;18)-negative FL have *BCL6* abnormalities (translocations or amplification), we did not pursue *BCL6* translocations since that was not a criterion used in the original Katzenberger et al.³ definition, and we did not find *BCL6* amplification in our series. Additional limitations are technical in nature. There may be false negativity, in particular for subclonal 1p36 deletion, due to low tumor cellularity seen in a small number of cases. The lack of matched germline tissue can confound tumor-only SNP-microarray and NGS analysis, although we have detailed conservative and comprehensive interpretive guidelines to limit misattribution of germline variants as somatic mutations. Last, we did not perform detailed genetic analyses of a control group comprising cFL and MZL to determine if the CNVs and mutations found in dFL are truly enriched by a direct case-control comparison. Since a broad range of techniques and analysis methods were

used by the referenced studies, there may be apparent differences in chromosomal and mutational patterns that is simply methodology-related. However, since many of the referenced studies used very similar techniques to the ones used in the present study, and reproducible molecular patterns were identified through this review, the presented aggregate reanalysis of the literature should represent a reliable estimate of the true rates of chromosomal and molecular abnormalities found in cFL and MZL, from which dFL differ.

Combined with the previously published studies, 66 dFL cases have now been pathologically and genetically characterized. As the WHO classification moves towards molecularly-defined lymphoma entities, such as pFL, the unifying pathologic and genetic features described herein may aid in the accurate subclassification of LGFL. The diagnostic distinction between the dFL from cFL with prominent diffuse growth is specifically recommended by the 2016 WHO¹ when an excisional biopsy is available, as the former will consistently lack t(14;18) *BCL2/IGH* rearrangements. In diagnostically challenging cases, the ancillary work-up should begin with FISH. Once absence of *BCL2* rearrangement is confirmed, NGS and CNV detection should follow. Identification of the characteristic 1p36 and/or 16p13 abnormalities along with *CREBBP* and *STAT6* mutations would support a diagnosis of a t(14;18)-negative dFL. The present literature, including our findings, has identified genetically distinct profiles of subtypes of LGBCL, which support the incorporation of genomic studies in the routine lymphoma workup, as the field moves towards molecular classification of lymphoma subtypes.

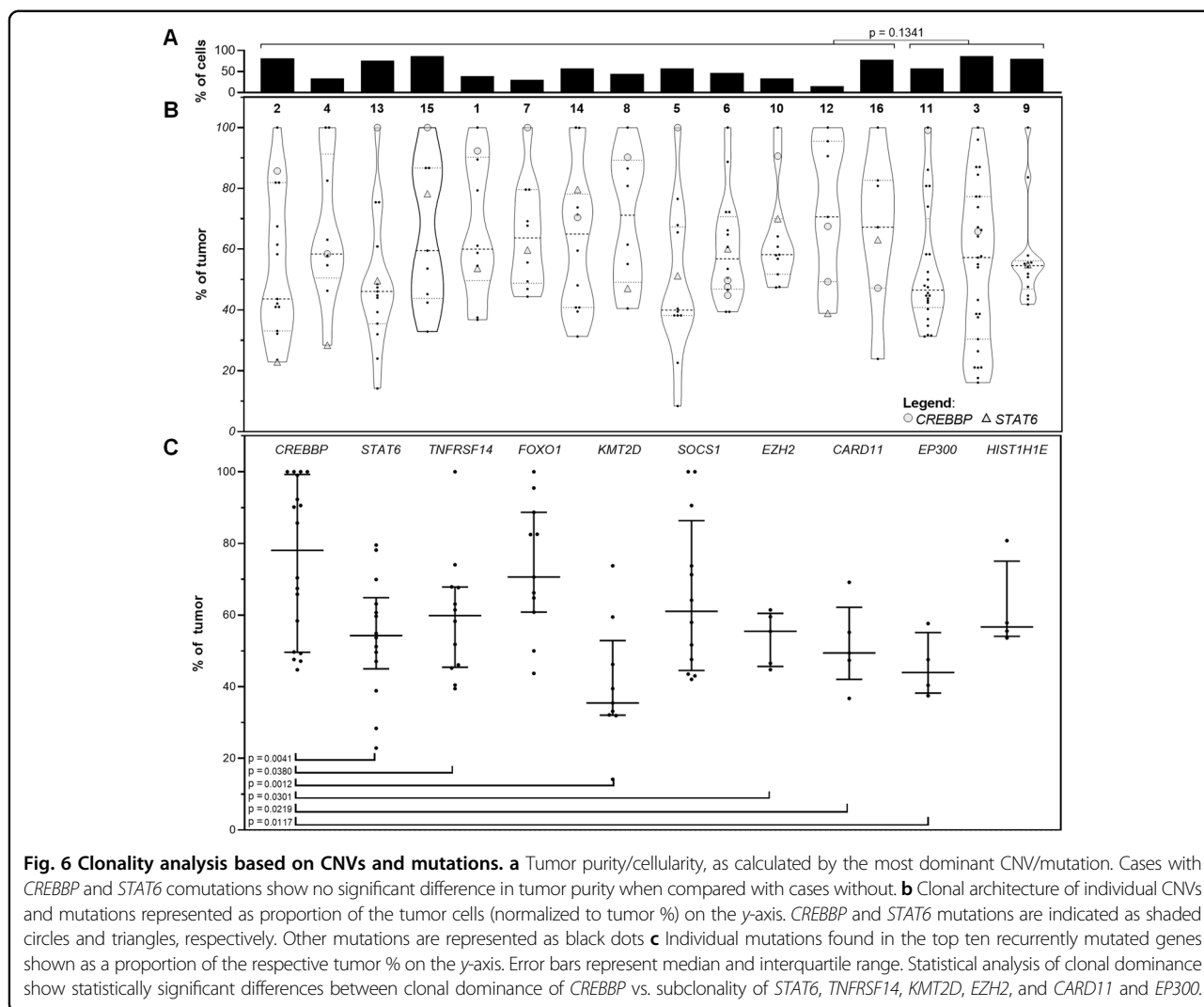


Table 2 Recurrently detected copy number variants and mutations found in diffuse follicular lymphoma (dFL) compared with previously published studies of conventional follicular lymphoma (cFL) and marginal zone lymphoma (MZL).

Copy number loss/CN-LOH	dFL % (N)*	cFL % (N)	p value	MZL % (N)	p value
1p36	76.4% (42/55)	21.8% (158/724)	<0.0001	6.5% (47/726)	<0.0001
16p13	38.5% (10/26)	9.1% (53/583)	<0.0001	7.6% (30/396)	<0.0001
1p36 + 16p13	30.8% (8/26)	3.4% (8/233)	<0.0001	2.2% (4/178)	<0.0001
Mutation	dFL % (N)	cFL % (N)	p value	MZL % (N)	p value
<i>CREBBP</i>	87.1% (27/31)	59.6% (374/627)	0.0021	6.9% (37/534)	<0.0001
<i>STAT6</i>	87.1% (27/31)	10.4% (61/528)	<0.0001	0.6% (2/309)	<0.0001
<i>TNFRSF14</i>	54.8% (17/31)	31.1% (202/649)	0.0094	3.1% (10/327)	<0.0001
<i>FOXO1</i>	29.0% (9/31)	7.4% (30/331)	0.0027	1.3% (4/309)	<0.0001
<i>KMT2D</i>	48.4% (15/31)	76.9% (464/603)	0.0009	11.2% (67/597)	<0.0001
<i>SOCS1</i>	19.4% (6/31)	3.0% (12/270)	0.0056	1.0% (3/309)	<0.0001
<i>EZH2</i>	29.0% (9/31)	19.2% (123/641)	0.1716	1.5% (7/469)	<0.0001
<i>CREBBP</i> + <i>STAT6</i>	74.2% (23/31)	7.4% (35/421)	<0.0001	0.6% (2/309)	<0.0001
<i>CREBBP</i> + <i>STAT6</i> + <i>TNFRSF14</i>	38.7% (12/31)	2.8% (13/421)	<0.0001	0.3% (1/309)	<0.0001
<i>CREBBP</i> / <i>EP300</i> + <i>KMT2D</i>	41.9% (13/31)	56.0% (314/561)	0.1402	2.2% (11/502)	<0.0001

CNVs in dFL detected in the present report and previously published studies^{3,20} were grouped and compared with previously published studies of cFL⁴⁻¹⁰ and MZL^{26,29,38-41}. Mutations in dFL detected in the present report and previously published studies^{20,21} were grouped and compared with mutations found in previously published studies of cFL¹¹⁻¹⁹ and MZL^{26,29-37}. The prevalence of each alteration in dFL, cFL, and MZL are shown along with the total number of samples studied. Statistical significance for each alteration found in dFL is tested against the same rates in cFL and MZL, and the resultant p values are shown. *Two cases were removed from a previously published study²⁰ of dFL in this aggregate analysis due to the presence of t(14;18) in those cases.

Acknowledgements

We would like to thank the patients, and submitting pathologists and clinicians who provided supporting case data and patient samples for the study. This work was supported in part by the Sidney Kimmel Comprehensive Cancer Center Grant from the National Institutes of Health (P30 CA006973; R.R.X., A.S.D., C.D.G.) and by the intramural research program of the Center for Cancer Research, National Cancer Institute (Y.X., S.P., E.S.J.). We would also like to thank the University of California, Los Angeles, Clinical Cytogenetics Laboratory, and Dr. Nagesh Rao for providing usage of the Nexus Copy Number chromosomal analysis software.

Author details

¹Department of Pathology, Johns Hopkins Medical Institutions, Baltimore, MD, USA. ²Department of Oncology, Sidney Kimmel Comprehensive Cancer Center, Johns Hopkins Medical Institutions, Baltimore, MD, USA. ³Pathology and Lab Medicine, University of California, Los Angeles, Los Angeles, CA, USA. ⁴Laboratory of Pathology, National Cancer Institute, Bethesda, MD, USA. ⁵Department of Pathology and Laboratory Medicine, University of California, San Francisco, San Francisco, CA, USA. ⁶Department of Pathology, Duke University School of Medicine, Durham, NC, USA. ⁷Pathology and Laboratory Medicine, Lehigh Valley Health Network, Allentown, PA, USA

Author contributions

R.R.X. and C.D.G. designed the study, analyzed the data, and wrote the manuscript; L.M.H. and R.Y. performed the SNP-array and NGS studies, and FISH studies respectively, contributed to the manuscript, and critically reviewed the manuscript. A.P. developed the NGS data analysis and TMB pipelines, assisted with data analysis, contributed to the manuscript, and critically reviewed the manuscript. Y.X., S.P., and E.S.J. contributed to the study design, analyzed the data, and critically reviewed the manuscript. A.S.D., C.M.M., and S.M.F.G. contributed to the study design, reviewed the data, and critically reviewed the manuscript.

Conflict of interest

The authors declare that they have no conflict of interest.

Publisher's note

Springer Nature remains neutral with regard to jurisdictional claims in published maps and institutional affiliations.

Supplementary Information accompanies this paper at (<https://doi.org/10.1038/s41408-020-0335-0>).

Received: 22 March 2020 Revised: 2 June 2020 Accepted: 4 June 2020

Published online: 17 June 2020

References

- Swerdlow S. H., et al. WHO classification of tumours of haematopoietic and lymphoid tissues: International Agency for Research on Cancer, Lyon, France 2017.
- Bhagavathi, S. et al. Does a diffuse growth pattern predict for survival in patients with low-grade follicular lymphoma? *Leukemia Lymphoma* **50**, 900–903 (2009).
- Katzenberger, T. et al. A distinctive subtype of t(14;18)-negative nodal follicular non-Hodgkin lymphoma characterized by a predominantly diffuse growth pattern and deletions in the chromosomal region 1p36. *Blood* **113**, 1053–1061 (2009).
- Cheung, K. J. et al. Acquired TNFRSF14 mutations in follicular lymphoma are associated with worse prognosis. *Cancer Res.* **70**, 9166–9174 (2010).
- Ross, C. W. et al. Comprehensive analysis of copy number and allele status identifies multiple chromosome defects underlying follicular lymphoma pathogenesis. *Clin. Cancer Res.* **13**, 4777–4785 (2007).
- Cheung, K. J. et al. Genome-wide profiling of follicular lymphoma by array comparative genomic hybridization reveals prognostically significant DNA copy number imbalances. *Blood* **113**, 137–148 (2009).
- Bouska, A. et al. Genome-wide copy-number analyses reveal genomic abnormalities involved in transformation of follicular lymphoma. *Blood* **123**, 1681–1690 (2014).
- Cheung, K. J. et al. High resolution analysis of follicular lymphoma genomes reveals somatic recurrent sites of copy-neutral loss of heterozygosity and copy number alterations that target single genes. *Genes Chromosomes Cancer* **49**, 669–681 (2010).
- Cheung, K. J. et al. SNP analysis of minimally evolved t(14;18)(q32;q21)-positive follicular lymphomas reveals a common copy-neutral loss of heterozygosity pattern. *Cytogenet. Genome Res.* **136**, 38–43 (2012).
- O'Shea, D. et al. Regions of acquired uniparental disomy at diagnosis of follicular lymphoma are associated with both overall survival and risk of transformation. *Blood* **113**, 2298–2301 (2009).
- Morin, R. D. et al. Frequent mutation of histone-modifying genes in non-Hodgkin lymphoma. *Nature* **476**, 298–303 (2011).
- Pasqualucci, L. et al. Inactivating mutations of acetyltransferase genes in B-cell lymphoma. *Nature* **471**, 189–195 (2011).
- Green, M. R. et al. Hierarchy in somatic mutations arising during genomic evolution and progression of follicular lymphoma. *Blood* **121**, 1604–1611 (2013).
- Okosun, J. et al. Integrated genomic analysis identifies recurrent mutations and evolution patterns driving the initiation and progression of follicular lymphoma. *Nat. Genet.* **46**, 176–181 (2014).
- Li, H. et al. Mutations in linker histone genes HIST1H1 B, C, D, and E; OCT2 (POU2F2); IRF8; and ARID1A underlying the pathogenesis of follicular lymphoma. *Blood* **123**, 1487–1498 (2014).
- Pasqualucci, L. et al. Genetics of follicular lymphoma transformation. *Cell Rep.* **6**, 130–140 (2014).
- Pastore, A. et al. Integration of gene mutations in risk prognostication for patients receiving first-line immunochemotherapy for follicular lymphoma: a retrospective analysis of a prospective clinical trial and validation in a population-based registry. *Lancet Oncol.* **16**, 1111–1122 (2015).
- Okosun, J. et al. Recurrent mTORC1-activating RAGC mutations in follicular lymphoma. *Nat. Genet.* **48**, 183–188 (2016).
- Green, M. R. et al. Mutations in early follicular lymphoma progenitors are associated with suppressed antigen presentation. *Proc. Natl. Acad. Sci. USA* **112**, E1116–E1125 (2015).
- Siddiqi, I. N. et al. Characterization of a variant of t(14;18) negative nodal diffuse follicular lymphoma with CD23 expression, 1p36/TNFRSF14 abnormalities, and STAT6 mutations. *Mod. Pathol.* **29**, 570–581 (2016).
- Zamò, A. et al. The exomic landscape of t(14;18)-negative diffuse follicular lymphoma with 1p36 deletion. *Br. J. Haematol.* **180**, 391–394 (2018).
- Zheng, G. et al. The diagnostic utility of targeted gene panel sequencing in discriminating etiologies of cytopenia. *Am. J. Hematol.* **94**, 1141–1148 (2019).
- McLaren, W. et al. Deriving the consequences of genomic variants with the Ensembl API and SNP effect predictor. *Bioinformatics* **26**, 2069–2070 (2010).
- Chalmers, Z. R. et al. Analysis of 100,000 human cancer genomes reveals the landscape of tumor mutational burden. *Genome Med.* **9**, 34 (2017).
- Schmidt, J. et al. Genome-wide analysis of pediatric-type follicular lymphoma reveals low genetic complexity and recurrent alterations of TNFRSF14 gene. *Blood* **128**, 1101–1111 (2016).
- Pillonel, V. et al. High-throughput sequencing of nodal marginal zone lymphomas identifies recurrent BRAF mutations. *Leukemia* **32**, 2412–2426 (2018).
- Cerami, E. et al. The cBio cancer genomics portal: an open platform for exploring multidimensional cancer genomics data. *Cancer Discov.* **2**, 401–404 (2012).
- Jay, J. J. & Brouwer, C. Lollipop plots in the clinic: information dense mutation plots for precision medicine. *PLoS One.* **11**, e0160519 (2016).
- Spina, V. et al. The genetics of nodal marginal zone lymphoma. *Blood* **128**, 1362–1373 (2016).
- Martinez-Lopez, A. et al. MYD88 (L265P) somatic mutation in marginal zone B-cell lymphoma. *Am. J. Surg. Pathol.* **39**, 644–651 (2015).
- van den Brand, M. et al. Recurrent mutations in genes involved in nuclear factor- κ B signalling in nodal marginal zone lymphoma—diagnostic and therapeutic implications. *Histopathology* **70**, 174–184 (2017).
- Johansson, P. et al. Recurrent mutations in NF- κ B pathway components, KMT2D, and NOTCH1/2 in ocular adnexal MALT-type marginal zone lymphomas. *Oncotarget* **7**, 62627–62639 (2016).
- Jung, H. et al. The mutational landscape of ocular marginal zone lymphoma identifies frequent alterations in TNFAIP3 followed by mutations in TBL1XR1 and CREBBP. *Oncotarget* **8**, 17038–17049 (2017).

34. Kiel, M. J. et al. Whole-genome sequencing identifies recurrent somatic NOTCH2 mutations in splenic marginal zone lymphoma. *J. Exp. Med.* **209**, 1553–1565 (2012).
35. Martinez, N. et al. Whole-exome sequencing in splenic marginal zone lymphoma reveals mutations in genes involved in marginal zone differentiation. *Leukemia* **28**, 1334–1340 (2014).
36. Parry, M. et al. Genetics and prognostication in splenic marginal zone lymphoma: revelations from deep sequencing. *Clin. Cancer Res.* **21**, 4174–4183 (2015).
37. Rossi, D. et al. The coding genome of splenic marginal zone lymphoma: activation of NOTCH2 and other pathways regulating marginal zone development. *J. Exp. Med.* **209**, 1537–1551 (2012).
38. Rinaldi, A. et al. Genome-wide DNA profiling of marginal zone lymphomas identifies subtype-specific lesions with an impact on the clinical outcome. *Blood* **117**, 1595–1604 (2011).
39. Takahashi, H. et al. Genome-wide analysis of ocular adnexal lymphoproliferative disorders using high-resolution single nucleotide polymorphism array. *Invest. Ophthalmol. Vis. Sci.* **56**, 4156–4165 (2015).
40. Salido, M. et al. Cytogenetic aberrations and their prognostic value in a series of 330 splenic marginal zone B-cell lymphomas: a multi-center study of the splenic B-cell lymphoma group. *Blood* **116**, 1479–1488 (2010).
41. Braggio, E. et al. Genomic analysis of marginal zone and lymphoplasmacytic lymphomas identified common and disease-specific abnormalities. *Mod. Pathol.* **25**, 651–660 (2012).
42. Thorns, C. et al. Significant high expression of CD23 in follicular lymphoma of the inguinal region. *Histopathology.* **50**, 716–719 (2007).
43. Olteanu, H. et al. CD23 expression in follicular lymphoma: clinicopathologic correlations. *Am. J. Clin. Pathol.* **135**, 46–53 (2011).
44. Iqbal, J. et al. BCL2 expression is a prognostic marker for the activated B-cell-like type of diffuse large B-cell lymphoma. *J. Clin. Oncol.* **24**, 961–968 (2006).
45. Correia, C. et al. BCL2 mutations are associated with increased risk of transformation and shortened survival in follicular lymphoma. *Blood* **125**, 658–667 (2015).
46. Catz, S. D. & Johnson, J. L. Transcriptional regulation of bcl-2 by nuclear factor kappa B and its significance in prostate cancer. *Oncogene* **20**, 7342–7351 (2001).
47. Hanada, M. et al. bcl-2 gene hypomethylation and high-level expression in B-cell chronic lymphocytic leukemia. *Blood* **82**, 1820–1828 (1993).
48. Mottok, A. et al. Genomic alterations in CIITA are frequent in primary mediastinal large B cell lymphoma and are associated with diminished MHC class II expression. *Cell Rep.* **13**, 1418–1431 (2015).
49. Louissaint, A. Jr et al. Pediatric-type nodal follicular lymphoma: a biologically distinct lymphoma with frequent MAPK pathway mutations. *Blood* **128**, 1093–1100 (2016).
50. García-Ramírez, I. et al. Crebbp loss cooperates with Bcl2 overexpression to promote lymphoma in mice. *Blood.* **129**, 2645–2656 (2017).
51. Tiacci, E. et al. Pervasive mutations of JAK-STAT pathway genes in classical Hodgkin lymphoma. *Blood* **131**, 2454–2465 (2018).
52. Ritz, O., Guitier, C. & Castellano, F. et al. Recurrent mutations of the STAT6 DNA-binding domain in primary mediastinal B-cell lymphoma. *Blood* **114**, 1236–1242 (2009).
53. Morin, R. D. et al. Genetic landscapes of relapsed and refractory diffuse large B-cell lymphomas. *Clin. Cancer Res.* **22**, 2290–2300 (2016).
54. Yildiz, M. et al. Activating STAT6 mutations in follicular lymphoma. *Blood* **125**, 668–679 (2015).
55. Wurster, A. L. et al. Interleukin-4-mediated protection of primary B cells from apoptosis through Stat6-dependent up-regulation of Bcl-xL. *J. Biol. Chem.* **277**, 27169–27175 (2002).
56. Beroukhir, R. et al. The landscape of somatic copy-number alteration across human cancers. *Nature* **463**, 899 (2010).
57. Ritz, O. et al. STAT6 activity is regulated by SOCS-1 and modulates BCL-XL expression in primary mediastinal B-cell lymphoma. *Leukemia* **22**, 2106 (2008).