

UC Irvine

UC Irvine Previously Published Works

Title

Patient Perspectives and Willingness to Accept Incentives for Tuberculosis Diagnostic Evaluation in Uganda

Permalink

<https://escholarship.org/uc/item/3j42t9f6>

Authors

Kadota, Jillian L
Nabwire, Sarah
Nalugwa, Talemwa
et al.

Publication Date

2021-09-01

DOI

10.1016/j.vhri.2020.12.005

Peer reviewed



Published in final edited form as:

Value Health Reg Issues. 2021 September ; 25: 48–56. doi:10.1016/j.vhri.2020.12.005.

Patient perspectives and willingness to accept incentives for tuberculosis diagnostic evaluation in Uganda.

Jillian L. Kadota, MPH¹, Sarah Nabwire², Talemwa Nalugwa, MBA², Justin S. White, PhD³, Adithya Cattamanchi, MD MAS^{1,2}, Achilles Katamba, PhD^{2,4}, Priya B. Shete, MD MPH^{1,2}

¹Division of Pulmonary and Critical Care Medicine, University of California San Francisco, San Francisco CA USA

²Uganda Tuberculosis Implementation Research Consortium, Kampala, Uganda

³Philip R. Lee Institute for Health Policy Studies, University of California San Francisco, San Francisco, USA

⁴Clinical Epidemiology & Biostatistics Unit, Department of Medicine, Makerere University College of Health Sciences, Kampala, Uganda

Abstract

Objectives—We assessed attitudes and perceptions and willingness-to-accept (WTA) varying incentive structures for completing TB diagnostic evaluation among patients in Uganda.

Methods—We surveyed 177 adult patients undergoing TB evaluation at 10 health centers between September 2018–March 2019. We collected household sociodemographic information and assessed attitudes and perceptions of incentives. We surveyed patients regarding their willingness to complete TB diagnostic evaluation in exchange for incentives ranging in value from 500 Ugandan Shillings (USh)-25,000USh (~US\$0.15-6.75). We compared associations between WTA and patient characteristics using ordered logistic regression.

Results—Participants' willingness to return to the health center to complete TB diagnostic evaluation increased proportionally with incentive amount. The median participant accepted between 2,000-5,000 USH. Cash (52%) and transportation vouchers (34%) were the most popular

Corresponding Author: Jillian L. Kadota, Division of Pulmonary and Critical Care Medicine, Zuckerberg San Francisco General Hospital, 1001 Potrero Avenue, 5K1, San Francisco, CA 94110, USA, Jillian.kadota@ucsf.edu, Phone: 628-206-4694, Fax: 415-695-1551.

Author Contributions: Concept and design: Cattamanchi, Katamba, Shete

Acquisition of data: Nabwire, Nalugwa, Katamba, Shete

Analysis and interpretation of data: Kadota, Nabwire, White, Cattamanchi, Katamba, Shete

Drafting of the manuscript: Kadota, White, Cattamanchi, Katamba, Shete

Critical revision of the paper for important intellectual content: Kadota, White, Shete

Statistical analysis: Kadota, Shete

Provision of study materials or patients: Nabwire, Katamba, Shete

Obtaining funding: Shete

Administrative, technical, or logistic support: Nabwire, Nalugwa, Katamba, Shete

Supervision: Nalugwa, Katamba, Shete

Conflict of Interest Disclosures: The authors reported no conflicts of interest.

Publisher's Disclaimer: This is a PDF file of an unedited manuscript that has been accepted for publication. As a service to our customers we are providing this early version of the manuscript. The manuscript will undergo copyediting, typesetting, and review of the resulting proof before it is published in its final form. Please note that during the production process errors may be discovered which could affect the content, and all legal disclaimers that apply to the journal pertain.

incentive types. Half of respondents preferred unconditional incentives; for a multi-day evaluation 84% preferred conditioning incentive receipt upon returning to the health center. In multivariate models we found the pairwise difference between the third and lowest income quartile (aOR=2.38, 95%CI: 1.20-4.69; p=0.01), younger age, and difficulty returning to the health center to be significantly associated with WTA higher incentive thresholds.

Conclusions—In Uganda, incentives such as cash transfers or transportation vouchers are an acceptable intervention for facilitating adherence to TB diagnostic evaluation. Household income is associated with preferred incentive structure and amount, especially for those at the cusp of the poverty threshold who are more likely to prefer unconditional and higher valued incentives. Targeted and context-specific socioeconomic supports for at-risk patients are needed to optimize outcomes.

Précis:

Cash transfers are a low-cost and acceptable tool for facilitating completion of tuberculosis diagnostic evaluation among vulnerable patients in a high-burden, low-resource setting.

Keywords

tuberculosis; incentives; social protection; willingness to accept

Introduction

Tuberculosis (TB) has become the leading infectious killer in the world and its prompt diagnosis is a priority for national TB programs worldwide ¹. Early diagnosis of active pulmonary TB prevents more severe disease in the individual patient, and reduces ongoing community transmission. According to the International Standards for Tuberculosis Care ², the diagnostic evaluation process is multi-step and consists of: 1) clinical evaluation and referral for sputum-based testing for patients with symptoms consistent with TB; 2) completion of sputum-based testing with smear microscopy or rapid PCR assays like GeneXpert MTB/RIF (Xpert) (Cepheid, Sunnyvale USA); and 3) initiation of TB treatment for those with microbiologically confirmed pulmonary TB. At best, this process can be completed within 1 day, but in low-resource settings may require multiple visits over several days ³. With approximately 3 million of an estimated 10 million incident cases of active TB not reported in 2018 ¹, there is an urgent need for novel strategies to reduce gaps in TB case detection and linkage to care, particularly during the diagnostic evaluation process ^{4,5}.

Patient-centered barriers to accessing TB diagnostic evaluation are increasingly recognized as a major factor contributing to pre-treatment loss to follow-up (LTFU). TB patients often incur “catastrophic” costs while seeking care, amounting to >20% their median household income ^{6,7}, driven by inefficiencies in the care-seeking pathway ^{3,8}. Additional socioeconomic barriers including fear of stigma and social isolation, geographic barriers to accessing healthcare centers, fear of income loss, and food insecurity ⁹⁻¹³ can be insurmountable for already impoverished patients. Economic incentives like cash or in-kind transfers are increasingly used to improve uptake of health services in a variety of public health programs. For example, cash transfers improved diagnostic testing and use

of artemisinin combination therapies among malaria patients in Kenya^{14,15} and increased demand for HIV services throughout sub-Saharan Africa¹⁶⁻²⁰.

Data supporting incentive use in TB prevention and care remain sparse. Some evidence indicates that monetary incentives can be a useful tool for improving retention in TB care in hard-to-reach populations²¹. Three recent systematic reviews indicate that incentives may improve treatment completion²²⁻²⁴. However, most of the available reviewed evidence comes from trials in well-resourced, low- to medium-incidence settings. These studies focus on the effect of incentives for patients already diagnosed and initiated on therapy²² as opposed to their use in targeting pre-treatment LTFU, the most substantial gap in the patient cascade of care^{4,5,25}. Finally, there is very limited research on how best to design and implement context-specific incentive interventions that feasibly and sustainably improve TB outcomes²⁶. Several studies of incentives for TB treatment adherence were terminated early due to lack of implementation fidelity, suggesting that how best to design and implement these types of interventions is unknown²³.

Despite a call for socioeconomic support for TB patients, National TB programs in low-resourced settings remain without guidance on how to design incentive structures best suited to their context. Critical features include incentive type and amount, timing of distribution, conditionality, and linkage to TB prevention and care programs²⁶. We sought to assess patient acceptance and preferences for incentive structure, and to estimate the likelihood that various incentive strategies could facilitate completion of TB diagnostic evaluation in Uganda.

Methods

Study setting and population

Between September 2018-March 2019 we enrolled participants at 10 community health centers in peri-urban and rural Uganda. Included health centers were those that used standard sputum smear microscopy and/or Xpert testing as their primary TB diagnosis method. We excluded health centers that demonstrated low volume of TB testing and diagnosis, which were those that 1) performed sputum-based TB diagnostic evaluation on <150 patients/year, or 2) diagnosed <15 smear positive TB cases/year²⁷.

We surveyed consecutive eligible participants who presented on randomly chosen days and who provided informed consent. Eligible participants included adults 18 years old undergoing first-time evaluation for TB. We excluded participants who: 1) had sputum collected for monitoring response to anti-TB therapy; 2) had sputum collected as part of active, community-based case finding; 3) had a documented prior TB treatment history; 4) were referred to the health center for TB treatment after a diagnosis was established elsewhere; 5) initiated treatment for presumed extra-pulmonary TB only; or 6) were clinically diagnosed with TB. Trained laboratory staff identified potential participants at the time of sputum submission for TB microbiologic testing and referred them to study staff for eligibility assessment and informed consent.

The study was approved by the University of California San Francisco Committee on Human Research, the Makerere University School of Medicine Research Ethics Committee, and the Uganda National Council for Science and Technology.

Study procedures

Patient Barriers Survey—Trained study staff surveyed participants in their native language using a standardized tool. We measured individual- and household-level demographics as well as household and individual income. We collected data on potential barriers to health care access including distance, travel time, inconvenience and transportation availability; barriers assessed related to healthcare affordability included costs and potential job loss associated with clinic visits. Finally, we evaluated: 1) the acceptability of incentives by the participant and their community, 2) preferences for incentive type and frequency, and 3) conditionality that would facilitate completion of TB diagnostic evaluation²⁸.

Willingness-to-accept Survey—Embedded within the Patient Barriers Survey were hypothetical choice survey questions used to gauge participants' willingness-to-accept (WTA) varying intensities (*i.e.*, amounts) of incentives to facilitate completion of TB diagnostic evaluation. WTA and willingness-to-pay are well-established survey-based contingent valuation tools and are useful for ascribing demand for a product or attaching a value to goods or services^{29,30}. In the health economics literature, WTA methods have been used to elicit individuals' monetary valuation of health programs, benefits and behaviors. Examples from the literature include HIV testing among high risk populations in Tanzania³¹, engaging in HIV risk reduction behaviors among male sex workers in Mexico³², and discontinuation of drug usage among older aged long-term prescription drug users³³. We adapted these tools by developing closed-ended, hypothetical choice questions to elicit the lowest stated acceptable amount of a cash incentive for completing TB diagnostic evaluation among presumptive TB patients in Uganda. The interviewer randomly alternated between two starting values of 10,000 Ugandan Shillings (USh) and 2,000 USh in order to avoid anchoring bias³⁴. The initial question: "Would you/could you return for 2,000/10,000 USh?" would be followed by another that increased the offered amount if the participant declined the first value or reduced the amount if the participant accepted (Figure 1). In doing so, the lowest value of an incentive that the participant deemed sufficient to facilitate health center return would be reached. This design (Supplement) followed the structure of similar studies conducted for other public health conditions^{31,32}.

At the time of data collection, US\$1.00 was equivalent to 3,745 USh. In 2019, TB-affected households in Uganda had a median annual household income of US\$1001 (Interquartile range (IQR): 500-1,668) and spent a median of US\$243 (IQR: 118-483) on TB-related costs³⁵. Assessed incentive values ranged from 500-25,000 USh. The respective lower and upper limits of 500 USh and 25,000 USh were selected based on previous studies documenting direct and indirect costs of health center visits for this population³ and stakeholder assessment of programmatic feasibility at scale.

Statistical analysis

Descriptive analyses included demographic and socioeconomic participant data reported as medians and IQRs for continuous variables and proportions and 95% confidence intervals (95% CIs) for categorical variables. Missing survey data included household income (n=27; 17%) and participant rating of ease of next-day return to the health center (n=6; 4%). We estimated the missing data by fitting an imputation model, repeated 100 times in order to account for statistical uncertainty in the imputed estimates. We considered a wide range of variables in our imputation model that would be potentially predictive of missingness, in addition to all variables in the substantive analysis³⁶. These included age, sex, marital status, educational level and health center location.

We used ordered logistic regression³⁷ with robust standard errors to account for clustering by health center to assess acceptability of incentives across participant demographic and socioeconomic characteristics. We assumed that the relationship between each pair of outcome groups is the same and thus probabilities for each category in the ordered outcome were cumulative (the proportional odds assumption). We can thus describe the probability that an individual gives a response in a category or higher compared to lower categories³⁷. We established five ranked categories for our outcome: (a) 500 USh, (b) 2,000 USh, (c) 5,000 USh, (d) 10,000 USh, and 25,000 USh.

Income as a socioeconomic characteristic was incorporated in the ordered logistic regression model as household income quartile. We also considered health center characteristics including whether the health center location was urban or rural³⁸. Additional factors considered for the regression model were participant characteristics selected based on *a priori* hypotheses of causal relationships with our outcome of interest as well as variables which were significant at $p < 0.20$ in bivariate analyses. The 0.20 threshold was selected based on recommendations for purposeful selection of variables for multivariable models^{39,40}. Other variables considered based on these criteria included sex, age, marital status, and difficulty of next-day return to the health center. The assumption of proportional odds for the final multivariable model was assessed using a likelihood ratio test.

Additional analyses explored associations between participant socioeconomic and demographic characteristics or health center characteristics and 1) barriers to daily, weekly and monthly health center visits; and 2) perceptions of incentive acceptability and preferences for conditionality. Bivariate analyses were conducted using Pearson's Chi-square (χ^2) test of association between independent variables and outcomes of interest. All analyses were conducted using Stata (v14.2, StataCorp LP, College Station, TX).

Results

Study sample characteristics

We enrolled 177 consecutive adults being evaluated for pulmonary TB at participating health centers on randomly selected days to participate in the study. Of the 177 enrolled participants, we included and analyzed 161 who completed the full survey. Of the 16 participants not included, nine started the survey but stopped before completion, and seven were not asked willingness-to-accept questions. Of the 161 included participants, 88 (55%)

were female and the median age was 38 years (IQR: 28-48). The majority accessed care at a rural health center (n=110, 68%) and were informally employed (n=132, 82%). The median reported household income was 150,000 US\$/month (IQR: 70,000-300,000); Table 1), which is consistent with prior income estimates for this population^{3,41}.

Barriers to health center visits for TB care

Participants who indicated that they would be unable to return for either daily, weekly, or monthly health center-based TB care most frequently reported lack of transportation as their largest barrier (for daily medication adherence: n=84 (62%); weekly: n=15 (58%); monthly: n=2 (67%); Table 2). Although 155 (96%) participants indicated that they would be able to return to the health center the following day to retrieve test results, 40% (n=62) stated that it would be difficult to do so.

Self-reported barriers to health center visits among participants who indicated they would be unable to return for health center-based TB care differed by income quartile. Participants in lower-income quartiles indicated transportation difficulties as their main challenge to health center visits compared to those in higher-income quartiles, who cited a mixture of concerns including transportation, inconvenience, and possible job loss (p=0.02) (Table 2). Participants in rural locations noted lack of transportation as their main barrier to health center return (urban: 37%; rural: 73%), whereas those in urban locations were more likely to indicate inconvenience (urban: 29%; rural: 18%) or possible job loss (urban: 24%; rural: 4%) as their primary concern (p<0.001). Health center visit barriers varied slightly by sex (p=0.07) but did not vary by other sociodemographic characteristics like age (results not shown).

Attitudes and perceptions regarding incentives

We evaluated attitudes and perceptions regarding incentives among participants and their communities (n=161) (Table 2). Seventeen participants (11%) had received some form of incentive before, primarily as cash or food as a part of a study-based program to support health outcomes. Participants almost unanimously agreed that incentives were acceptable to themselves and within their communities (cash: n=160, 99%; transportation vouchers: n=158, 99%; food: n=156, 97%). When asked to compare incentive types, the majority of participants preferred cash (n=84; 52%) or transportation vouchers (n=54; 34%) to facilitate health center return to complete diagnostic evaluation. While the preferred incentive type did not vary by income quartile, age, occupation and health center location, women were more likely to choose transportation vouchers (n=48; 55%) compared to men, who preferred cash (n=31; 43%; p=0.04).

Preference for incentive conditionality

We assessed preference for incentive conditionality within the context of both single and multi-day TB evaluations. For hypothetical single-day evaluation scenarios, where testing and treatment initiation could be completed on the same day, participants in the second and highest income quartiles preferred an incentive conditioned upon completion of diagnostic testing (n=24 (71%) and n=17 (65%), respectively). Participants in the lowest and third income quartiles preferred unconditional incentives provided at the beginning of the

diagnostic process, and the receipt of which was not dependent on completion of testing (n=12; 33% and n=14; 39%), respectively; $p<0.01$). For hypothetical multi-day evaluation scenarios, the proportion of participants who preferred conditional incentives provided only after completion of diagnostic evaluation was high overall but varied slightly by income quartile (overall: n=134 (84%); Table 2). We assessed preference for conditionality self-reported ease or difficulty in next day return to receive their test results and initiate treatment. For multi-day evaluations, almost all participants (n=57; 95%) who indicated return to the health center would be difficult agreed that conditioning incentive receipt upon return would be helpful in finishing their evaluation. However, only 37% (n=22) felt that conditionality would be helpful for same-day evaluations. Preference for conditionality did not differ by age, sex or health center location.

Willingness-to-accept incentives for TB testing

Participants' willingness-to-accept varying incentive amounts to return to the health center are shown in Figure 2. Forty (40) participants (25%) accepted 500 US\$, 69 participants (43%) accepted 2,000 US\$, 112 (70%) accepted 5,000 US\$, and the remainder (n=49; 30%) required 10,000 US\$ to facilitate TB diagnostic evaluation (Figure 2). Participants' willingness-to-accept different amounts of incentives varied by income quartile, particularly for mid-range incentive values of 2,000 US\$ ($p=0.06$) and 5,000 US\$ ($p=0.02$). Specifically, participants in the third income quartile were less likely than other income quartiles to accept mid-range amounts (Table 3).

Bivariate ordered logistic regression analyses revealed that participants who reported that next-day return to the health center would be difficult were more likely to require higher incentive amounts compared to those who responded that return would be easy (OR=2.12; 95% CI: 1.48-3.05). Older participants were less likely to require higher incentive amounts to complete TB diagnostic evaluation compared to their younger counterparts (OR=0.55; 95% CI: 0.32-0.94) (Table 4). Sex (OR=0.98; 95% CI: 0.50-1.96), marital status (OR=1.31; 95% CI: 0.77-2.22), and health center location (OR=0.64; 95% CI: 0.22-1.86) were not associated with accepted incentive amount.

Perceived difficulty in returning to the health center (aOR=2.53, 95% CI: 1.59-4.02) and age (aOR=0.44, 95% CI: 0.22-0.91) remained significant associations in our multivariable analysis (Table 4). The pairwise difference between the third income quartile and the reference income quartile (aOR=2.38, 95% CI: 1.20-4.69) was associated with willingness-to-accept higher incentive thresholds ($p=0.01$). The association between income and preferred incentive amount trended towards statistical significance in our final multivariate model, indicating that participants in higher-income categories were more willing to complete TB diagnostic evaluation only at higher incentive amounts compared to those in lower-income categories ($p=0.08$).

Discussion

These results demonstrate the acceptability of incentives as a public health intervention for improving adherence to TB diagnostic evaluation in a high-burden, low-resource setting. The vast majority of participants expressed that incentives including cash transfers,

transportation vouchers, and food rations were socially and culturally acceptable to both themselves and their communities (99%; 99%; and 97%, respectively). In our study setting, overall incentive acceptability did not differ greatly based on income or other demographic characteristics. Our results demonstrate that all incentive types are acceptable to these participants and their communities, as has been shown in other public health contexts ⁴²⁻⁴⁴. Although all incentive types were universally acceptable, our results indicate that not all incentives are alike. Participants preferred cash or transportation vouchers over food for TB diagnostic evaluation (52%; 34%; and 9%, respectively). Even in a setting with high rates of impoverishment (median household income <US\$1.90/day) ⁴¹, participants expressed clear preferences for how incentives should be structured to support their needs. These preferences could translate into different responses to incentives and diagnostic outcomes among different populations. In low-resourced settings such as Uganda, TB programs can use this information to guide resource allocation and targeting of incentive programs tailored to the needs and preferences of patient populations that overcome their specific barriers to care.

Perceived barriers to TB diagnostic evaluation influence incentive preference. The strong preference reported for cash transfers or transportation vouchers as the incentive type most likely to facilitate completing TB diagnostic evaluation is consistent with the most frequently described barrier to TB care: high transportation costs and lost wages. Transportation costs are a known driver of patients' costs in accessing TB care in Uganda and worldwide ^{3,6,45}, and a pervasive structural barrier for vulnerable patients seeking services for a variety of other healthcare needs in sub-Saharan Africa ⁴⁶⁻⁵⁷. In our study, participants in higher-income categories more frequently reported a mixture of barriers to returning to the health center, including possible job loss or inconvenience. This corresponds to more recently described barriers to care reflected by high indirect costs of TB prevention and care services ^{3,6,45}. Our findings also suggest that heterogeneity in preference for different incentive structures may be driven by a difference in the relative importance of these barriers to completing TB diagnostic evaluation. For example, males indicated a preference for cash (42%) compared to females, who preferred transportation vouchers (55%; $p=0.04$). This suggests that men and women in these communities may view the use of cash and vouchers differently based on local gender dynamics.

Willingness to return to the health center increases proportionally with incentive amount, such that 25% of participants would return for an incentive of 500 USh, and 100% would return for 25,000 USh. This result suggests that the provision of a modest cash incentive of 5,000 USh could motivate up to 70% of patients who otherwise would not return to the health center to complete their diagnostic evaluation, increasing testing completion from a baseline of 56% ⁵⁸ to >80%. This change would substantially reduce patient attrition in the TB cascade of care. Further, the median participant's WTA amount was between 2,000-5,000 USh (US\$0.53-1.34), an incentive range that may be acceptable to National TB programs and reasonable to implement at scale. Combined, these findings could have significant program and policy implications for reducing pre-treatment LTFU among presumptive TB patients.

However, we describe a non-linear relationship between income and WTA incentives for returning to the health center to receive TB test results, suggesting that incentives may drive behavior differently among participants with different income or SES. Study participants on the extreme ends of income (*i.e.*, bottom and highest quartiles) accepted incentive values less than those in the second- and third-income quartiles. The majority of participants in the lowest-income quartile agreed to an incentive valued 5,000 US\$, corresponding to the amount required to directly offset the cost of one-way transport for a health center visit³. Seventy-five percent of participants in the highest-income quartile were also willing to return to the health center for diagnostic evaluation for 5,000 US\$, less than 5% of their weekly income. This group also preferred conditional incentives provided after completion of diagnostic evaluation, suggesting that incentives may increase motivation and adherence⁵⁹. In contrast, participants in the lowest-income quartile preferred unconditional incentives provided immediately, suggesting that they were not willing to accept uncertain payment and may view incentives as funds to pay for or offset costs of care that would exacerbate poverty. Research on the various mechanisms by which incentives alter behavior and health outcomes is an ongoing area of research for economists and public health experts⁶⁰. One meta-analysis of the use of behavioral economics in the design of financial incentives for health promotion showed that while incentives typically increased the odds of eliciting behavior change, different demographic and socioeconomic characteristics of targeted populations predicted the success of different incentive structures⁶¹. Our study reinforces this conclusion.

Our multivariate analysis found that participants in higher-income quartiles were more likely to accept TB diagnostic evaluation for higher incentive values compared to those in the lowest quartile (aOR=2.38, 95% CI: 1.20-4.69). Participants in the 3rd income quartile, whose household incomes fall at or below the poverty threshold of US\$1.90/day⁴¹, were more likely to prefer unconditional incentives and have a higher willingness-to-accept threshold. Preference for relatively higher-valued incentives in this marginally wealthier population may reflect decision-making by individuals trying to prevent impoverishment. Incentives may work by mitigating the negative financial effects of direct and indirect (opportunity) costs associated with accessing health services⁶². The provision of cash or transportation vouchers to those already most impoverished or those at the brink of falling into poverty may act as a social protection intervention. Nonetheless, 40% of all study participants reported that next-day return to the health center would be difficult, making them 2.53 times as likely to only accept the highest incentive values compared to those who said it would be easy. This suggests that there are challenges for individuals regardless of relative wealth – and that cash or other forms of incentives could act as an important motivational or protective intervention for improving access to the health center and TB outcomes overall.

Our study has some limitations. Some data were incomplete, with 17% of household income, for example, missing, usually because participants were unable to recall this information. We addressed this limitation using multiple imputation (MI), a well-known, flexible method to achieve improved precision and remedy biases resulting from data not missing at random⁶³. We acknowledge that self-reported income is an imperfect and potentially unreliable measure of wealth, particularly in low-resource settings where asset ownership and property might be a better indication of relative wealth⁶⁴. Another

potential source of bias was the use of only two starting values for the willingness-to-accept negotiation, making it such that only some of the WTA outcomes were possible depending on which amount the participant was initially offered. Finally, as the willingness-to-accept questions were asked in a survey format that was a subset of a larger study, by design we did not have the power to detect meaningful differences between groups. Even so, we were able to describe some important associations between incentive structure, acceptability, and patient social and demographic characteristics.

Conclusions

The use of hypothetical choice contingent valuation tools such as willingness-to-accept can be useful in designing a complex intervention such as social protection interventions for public health^{31,65,66}. Social protection interventions are meant to protect patients from serious social and financial risk and are a core component of the World Health Organization's END TB strategy⁶⁷, which cites their potential for improving TB outcomes among vulnerable populations⁶⁸. Despite some differences in the level of acceptable incentive amounts, we found that modest cash transfer values may be sufficient to facilitate and motivate up to 70% of patients who would otherwise not return to the health center to complete TB diagnostic evaluation in this resource-limited setting. This finding suggests that the implementation of cash transfer programs such as this one on a broader scale could have a substantial effect on reducing pre-treatment LTFU, the largest gap in the patient cascade of care. Further, these methods can be further leveraged to inform the design and evaluation of other social protection interventions for vulnerable populations. By suggesting characteristics such as incentive type, duration, value, and conditionality that predict successful TB outcomes for specific populations, we provide a systematic approach for National TB programs to operationalize social protection interventions as a core pillar of TB prevention and care activities.

Supplementary Material

Refer to Web version on PubMed Central for supplementary material.

Acknowledgments:

The authors are grateful to the administration, staff and patients at the participating health centers for their time and participation, the research administration of the Uganda TB Implementation Research Consortium and the National Tuberculosis and Leprosy Program.

Funding/Support: This work was supported by the UCSF-Gladstone Center for AIDS Research Mentored Science Award in HIV/AIDS Research (grant NIH P30 AI027763 Award A120163); the Parker B. Francis Fellowship (grant P0523744); and the U.S. National Heart, Lung, and Blood Institute (grant NIH/NHLBI R01AI121144).

Role of the Funder/Sponsor: The funder had no role in the design and conduct of the study; collection, management, analysis, and interpretation of the data; preparation, review, or approval of the manuscript; and decision to submit the manuscript for publication.

List of abbreviations

TB	tuberculosis
----	--------------

N TLP	National TB and Leprosy Control Program
LTFU	loss to follow-up
SES	socioeconomic status
WTA	willingness-to-accept
USh	Ugandan Shillings
US	United States
IQR	interquartile range
CI	confidence interval
MI	Multiple Imputation
OR	odds ratio

References

1. World Health Organization Global Tuberculosis Report. Geneva, Switzerland 2019.
2. I TC. International standards for tuberculosis care. In: 2014.
3. Shete PB, Haguma P, Miller CR, et al. Pathways and costs of care for patients with tuberculosis symptoms in rural Uganda. *Int J Tuberc Lung Dis.* 2015;19(8):912–917. [PubMed: 26162356]
4. Subbaraman R, Nathavitharana RR, Satyanarayana S, et al. The Tuberculosis Cascade of Care in India's Public Sector: A Systematic Review and Meta-analysis. *PLoS Med.* 2016;13(10):e1002149. [PubMed: 27780217]
5. Naidoo P, Theron G, Rangaka MX, et al. The South African Tuberculosis Care Cascade: Estimated Losses and Methodological Challenges. *J Infect Dis.* 2017;216(suppl_7):S702–S713. [PubMed: 29117342]
6. Tanimura T, Jaramillo E, Weil D, Raviglione M, Lonroth K. Financial burden for tuberculosis patients in low- and middle-income countries: a systematic review. *Eur Respir J.* 2014;43(6):1763–1775. [PubMed: 24525439]
7. Wingfield T, Boccia D, Tovar M, et al. Defining catastrophic costs and comparing their importance for adverse tuberculosis outcome with multi-drug resistance: a prospective cohort study, Peru. *PLoS Med.* 2014;11(7):e1001675. [PubMed: 25025331]
8. Abimbola S, Ukwaja KN, Onyedum CC, Negin J, Jan S, Martiniuk AL. Transaction costs of access to health care: Implications of the care-seeking pathways of tuberculosis patients for health system governance in Nigeria. *Glob Public Health.* 2015;10(9):1060–1077. [PubMed: 25652349]
9. de Pee S, Grede N, Mehra D, Bloem MW. The enabling effect of food assistance in improving adherence and/or treatment completion for antiretroviral therapy and tuberculosis treatment: a literature review. *AIDS Behav.* 2014;18Suppl 5:S531–541. [PubMed: 24619602]
10. Grede N, Claros JM, de Pee S, Bloem M. Is there a need to mitigate the social and financial consequences of tuberculosis at the individual and household level? *AIDS Behav.* 2014;18Suppl 5:S542–553. [PubMed: 24710958]
11. Cattamanchi A, Miller CR, Tapley A, et al. Health worker perspectives on barriers to delivery of routine tuberculosis diagnostic evaluation services in Uganda: a qualitative study to guide clinic-based interventions. *BMC Health Serv Res.* 2015;15:10. [PubMed: 25609495]
12. Cattamanchi A, Berger CA, Shete PB, et al. Implementation science to improve the quality of tuberculosis diagnostic services in Uganda. *J Clin Tuberc Other Mycobact Dis.* 2020;18:100136. [PubMed: 31879703]
13. Finnie RK, Khoza LB, van den Borne B, Mabunda T, Abotchie P, Mullen PD. Factors associated with patient and health care system delay in diagnosis and treatment for TB in sub-Saharan

- African countries with high burdens of TB and HIV. *Trop Med Int Health*. 2011;16(4):394–411. [PubMed: 21320240]
14. Prudhomme O'Meara W, Menya D, Laktabai J, et al. Improving rational use of ACTs through diagnosis-dependent subsidies: Evidence from a cluster-randomized controlled trial in western Kenya. *PLOS Medicine*. 2018;15(7):e1002607. [PubMed: 30016316]
 15. Cohen J, Dupas P, Schaner S. Price Subsidies, Diagnostic Tests, and Targeting of Malaria Treatment: Evidence from a Randomized Controlled Trial. *American Economic Review*. 2015;105(2):609–645.
 16. Siedner MJ, Santorino D, Lankowski AJ, et al. A combination SMS and transportation reimbursement intervention to improve HIV care following abnormal CD4 test results in rural Uganda: a prospective observational cohort study. *BMC Med*. 2015;13:160. [PubMed: 26149722]
 17. McCoy SI, Njau PF, Fahey C, et al. Cash vs. food assistance to improve adherence to antiretroviral therapy among HIV-infected adults in Tanzania. *AIDS*. 2017;31(6):815–825. [PubMed: 28107221]
 18. Liu JX, Shen J, Wilson N, Janumpalli S, Stadler P, Padian N. Conditional cash transfers to prevent mother-to-child transmission in low facility-delivery settings: evidence from a randomised controlled trial in Nigeria. *BMC Pregnancy Childbirth*. 2019;19(1):32. [PubMed: 30651080]
 19. Lee R, Cui RR, Muessig KE, Thirumurthy H, Tucker JD. Incentivizing HIV/STI testing: a systematic review of the literature. *AIDS Behav*. 2014;18(5):905–912. [PubMed: 24068389]
 20. Thornton RL. The Demand for, and Impact of, Learning HIV Status. *Am Econ Rev*. 2008;98(5):1829–1863. [PubMed: 21687831]
 21. Heuvelings CC, de Vries SG, Greve PF, et al. Effectiveness of interventions for diagnosis and treatment of tuberculosis in hard-to-reach populations in countries of low and medium tuberculosis incidence: a systematic review. *Lancet Infect Dis*. 2017;17(5):e144–e158. [PubMed: 28291722]
 22. Richterman A, Steer-Massaró J, Jarolimova J, Luong Nguyen LB, Werdenberg J, Ivers LC. Cash interventions to improve clinical outcomes for pulmonary tuberculosis: systematic review and meta-analysis. *Bull World Health Organ*. 2018;96(7):471–483. [PubMed: 29962550]
 23. Lutge EE, Wiyongse CS, Knight SE, Sinclair D, Volmink J. Incentives and enablers to improve adherence in tuberculosis. *Cochrane Database Syst Rev*. 2015(9):CD007952. [PubMed: 26333525]
 24. Alipanah N, Jarlsberg L, Miller C, et al. Adherence interventions and outcomes of tuberculosis treatment: A systematic review and meta-analysis of trials and observational studies. *PLoS Med*. 2018;15(7):e1002595. [PubMed: 29969463]
 25. Vesga JF, Hallett TB, Reid MJA, et al. Assessing tuberculosis control priorities in high-burden settings: a modelling approach. *Lancet Glob Health*. 2019;7(5):e585–e595. [PubMed: 30904521]
 26. Boccia D, Pedrazzoli D, Wingfield T, et al. Towards cash transfer interventions for tuberculosis prevention, care and control: key operational challenges and research priorities. *BMC Infect Dis*. 2016;16:307. [PubMed: 27329161]
 27. Farr K, Nalugwa T, Ojok C, et al. Quality of care for patients evaluated for tuberculosis in the context of Xpert MTB/RIF scale-up. *J Clin Tuberc Other Mycobact Dis*. 2019;15:100099. [PubMed: 31720425]
 28. Dow WH, White JS. Incentivizing use of health care. New York: United Nations Department of Economic and Social Affairs 2013.
 29. Gafni A. Willingness-to-Pay as a Measure of Benefits: Relevant Questions in the Context of Public Decisionmaking about Health Care Programs. *Med Care*. 1991;29(12):1246–1252. [PubMed: 1745082]
 30. O'Brien B. Cost–Benefit Analysis, Willingness to Pay. In: *Encyclopedia of Biostatistics*: John Wiley & Sons, Ltd; 2005.
 31. Ostermann J, Brown DS, Muhlbacher A, Njau B, Thielman N. Would you test for 5000 Shillings? HIV risk and willingness to accept HIV testing in Tanzania. *Health Econ Rev*. 2015;5(1):60. [PubMed: 26285777]
 32. Galarraga O, Sosa-Rubi SG, Infante C, Gertler PJ, Bertozzi SM. Willingness-to-accept reductions in HIV risks: conditional economic incentives in Mexico. *Eur J Health Econ*. 2014;15(1):41–55. [PubMed: 23377757]

33. Marti J, Bachhuber M, Feingold J, Meads D, Richards M, Hennessy S. Financial incentives to discontinue long-term benzodiazepine use: a discrete choice experiment investigating patient preferences and willingness to participate. *BMJ Open*. 2017;7(10):e016229.
34. Green D, Jacowitz KE, Kahneman D, McFadden D. Referendum contingent valuation, anchoring, and willingness to pay for public goods. *Resource and Energy Economics*. 1998;20(2):85–116.
35. (Uganda) MoH. Direct and Indirect costs due to Tuberculosis and proportion of Tuberculosis-affected households experiencing catastrophic costs due to TB in Uganda. Uganda: Ministry of Health Uganda;2019.
36. Collins LM, Schafer JL, Kam CM. A comparison of inclusive and restrictive strategies in modern missing data procedures. *Psychol Methods*. 2001;6(4):330–351. [PubMed: 11778676]
37. Freese J, Long JS. *Regression Models for Categorical Dependent Variables Using Stata*. College Station, Texas: Stata Press; 2001.
38. Uganda MoH. National Health Facility Master List 2018. In. Kampala, Uganda2018.
39. Mickey RM, Greenland S. The impact of confounder selection criteria on effect estimation. *Am J Epidemiol*. 1989;129(1):125–137. [PubMed: 2910056]
40. Bursac Z, Gauss CH, Williams DK, Hosmer DW. Purposeful selection of variables in logistic regression. *Source Code Biol Med*. 2008;3:17. [PubMed: 19087314]
41. The World Bank: Uganda. World Bank Group. <https://data.worldbank.org/country/uganda>. Published 2019. Accessed January 3, 2020, 2020.
42. Clouse K, Mongwenyana C, Musina M, et al. Acceptability and feasibility of a financial incentive intervention to improve retention in HIV care among pregnant women in Johannesburg, South Africa. *AIDS Care*. 2018;30(4):453–460. [PubMed: 29067861]
43. MacPhail C, Adato M, Kahn K, et al. Acceptability and feasibility of cash transfers for HIV prevention among adolescent South African women. *AIDS Behav*. 2013;17(7):2301–2312. [PubMed: 23435698]
44. Skovdal M, Mushati P, Robertson L, et al. Social acceptability and perceived impact of a community-led cash transfer programme in Zimbabwe. *BMC Public Health*. 2013;13:342. [PubMed: 23587136]
45. Direct and Indirect costs due to Tuberculosis and proportion of Tuberculosis-affected households experiencing catastrophic costs due to TB in Uganda. 2019.
46. Kyei-Nimakoh M, Carolan-Olah M, McCann TV. Access barriers to obstetric care at health facilities in sub-Saharan Africa—a systematic review. *Syst Rev*. 2017;6(1):110. [PubMed: 28587676]
47. Fleming E, Gaines J, O'Connor K, et al. Can incentives reduce the barriers to use of antenatal care and delivery services in Kenya?: Results of a qualitative inquiry. *J Health Care Poor Underserved*. 2017;28(1):153–174. [PubMed: 28238994]
48. Gusdal AK, Obua C, Andualem T, et al. Voices on adherence to ART in Ethiopia and Uganda: a matter of choice or simply not an option? *AIDS Care*. 2009;21(11): 1381–1387. [PubMed: 20024714]
49. Lubega M, Nsabagasani X, Tumwesigye NM, et al. Policy and practice, lost in transition: Reasons for high drop-out from pre-antiretroviral care in a resource-poor setting of eastern Uganda. *Health Policy*. 2010;95(2-3):153–158. [PubMed: 20022131]
50. Lankowski AJ, Siedner MJ, Bangsberg DR, Tsai AC. Impact of geographic and transportation-related barriers on HIV outcomes in sub-Saharan Africa: a systematic review. *AIDS Behav*. 2014;18(7):1199–1223. [PubMed: 24563115]
51. Govindasamy D, Meghij J, Kebede Negussi E, Clare Baggaley R, Ford N, Kranzer K. Interventions to improve or facilitate linkage to or retention in pre-ART (HIV) care and initiation of ART in low- and middle-income settings—a systematic review. *J Int AIDS Soc*. 2014;17:19032. [PubMed: 25095831]
52. Mayer CM, Owaraganise A, Kabami J, et al. Distance to clinic is a barrier to PrEP uptake and visit attendance in a community in rural Uganda. *J Int AIDS Soc*. 2019;22(4):e25276. [PubMed: 31037845]

53. Fisher E, Lazarus R, Asgary R. Attitudes and Perceptions Towards Access and Use of the Formal Healthcare Sector in Northern Malawi. *J Health Care Poor Underserved*. 2017;28(3):1104–1115. [PubMed: 28804081]
54. Sibeudu FT, Uzochukwu BS, Onwujekwe OE. Investigating socio-economic inequity in access to and expenditures on routine immunization services in Anambra state. *BMC Res Notes*. 2017;10(1):78. [PubMed: 28143605]
55. Levine AC, Presser DZ, Rosborough S, Ghebreyesus TA, Davis MA. Understanding barriers to emergency care in low-income countries: view from the front line. *Prehosp Disaster Med*. 2007;22(5):467–470. [PubMed: 18087920]
56. Geleto A, Chojenta C, Musa A, Loxton D. Barriers to access and utilization of emergency obstetric care at health facilities in sub-Saharan Africa: a systematic review of literature. *Syst Rev*. 2018;7(1):183. [PubMed: 30424808]
57. Kironji AG, Hodgkinson P, de Ramirez SS, et al. Identifying barriers for out of hospital emergency care in low and low-middle income countries: a systematic review. *BMC Health Serv Res*. 2018;18(1):291. [PubMed: 29673360]
58. Katherine Farr TN, Ojok Christopher, Nantale Mariam, Nabwire Sarah, Oyuku Denis, Shete Priya B., Han Alvina H., Fielding Katherine, Joloba Moses, Mugabe Frank, Dowdy David W., Moore DAJ, Lucian Davis J, Katamba Achilles, Cattamanchi Adithya. Quality of care for patients evaluated for tuberculosis in the context of Xpert MTB/RIF scale-up. *Journal of Clinical Tuberculosis and Other Mycobacterial Diseases*. 2019;15.
59. Rogers T, Milkman KL, Volpp KG. Commitment devices: using initiatives to change behavior. *JAMA*. 2014;311:2065–2066. [PubMed: 24777472]
60. Vlaev I, King D, Darzi A, Dolan P. Changing health behaviors using financial incentives: a review from behavioral economics. *BMC Public Health*. 2019;19(1):1059. [PubMed: 31391010]
61. Haff N, Patel MS, Lim R, et al. The role of behavioral economic incentive design and demographic characteristics in financial incentive-based approaches to changing health behaviors: a meta-analysis. *Am J Health Promot*. 2015;29(5):314–323. [PubMed: 25928816]
62. Fiszbein A, Schady N. Conditional cash transfers: reducing present and future poverty. Washington DC: The World Bank; 2009.
63. Sterne JA, White IR, Carlin JB, et al. Multiple imputation for missing data in epidemiological and clinical research: potential and pitfalls. *BMJ*. 2009;338:b2393. [PubMed: 19564179]
64. Shaukat B, Javed S, Imran W. Wealth Index as Substitute to Income and Consumption: Assessment of Household Poverty Determinants Using Demographic and Health Survey Data. *Journal of Poverty*. 2019.
65. Galarraga O, Genberg BL, Martin RA, Barton Laws M, Wilson IB. Conditional economic incentives to improve HIV treatment adherence: literature review and theoretical considerations. *AIDS Behav*. 2013;17(7):2283–2292. [PubMed: 23370833]
66. Lin PJ, Cangelosi MJ, Lee DW, Neumann PJ. Willingness to pay for diagnostic technologies: a review of the contingent valuation literature. *Value Health*. 2013;16(5):797–805. [PubMed: 23947973]
67. World Health Organization. The End TB Strategy: Global strategy and targets. for tuberculosis prevention, care and control after 2015a. World Health Organization;2014.
68. Uplekar M, Weil D, Lonnroth K, et al. WHO's new end TB strategy. *Lancet*. 2015;385(9979):1799–1801. [PubMed: 25814376]

Highlights

- Patient-centered interventions like cash transfers are increasingly recognized as a crucial approach for improving tuberculosis (TB) outcomes. Data to support acceptable incentive intervention design that maximizes their utility are limited. Willingness to accept monetary reimbursements for completing TB diagnostic evaluation among patients in Uganda has not been formally evaluated and could inform other cash transfer interventions in high-burden settings.
- Cash and transportation vouchers are acceptable interventions for motivating completion of TB diagnostic evaluation. Our cross-sectional willingness-to-accept survey results suggest that willingness to return to the health center to complete diagnostic evaluation increases proportionally with incentive amount. Household income is associated with preferred incentive structure and acceptable amount.
- Small cash transfers as little as 5,000 USh (US\$1.34) could motivate up to 70% of patients who otherwise would not return to the health center to complete their evaluation. This amount would be an acceptable amount to National TB Programs at scale and could significantly reduce pre-treatment loss to follow up in the cascade of care for tuberculosis and other diseases in similar low-income settings.

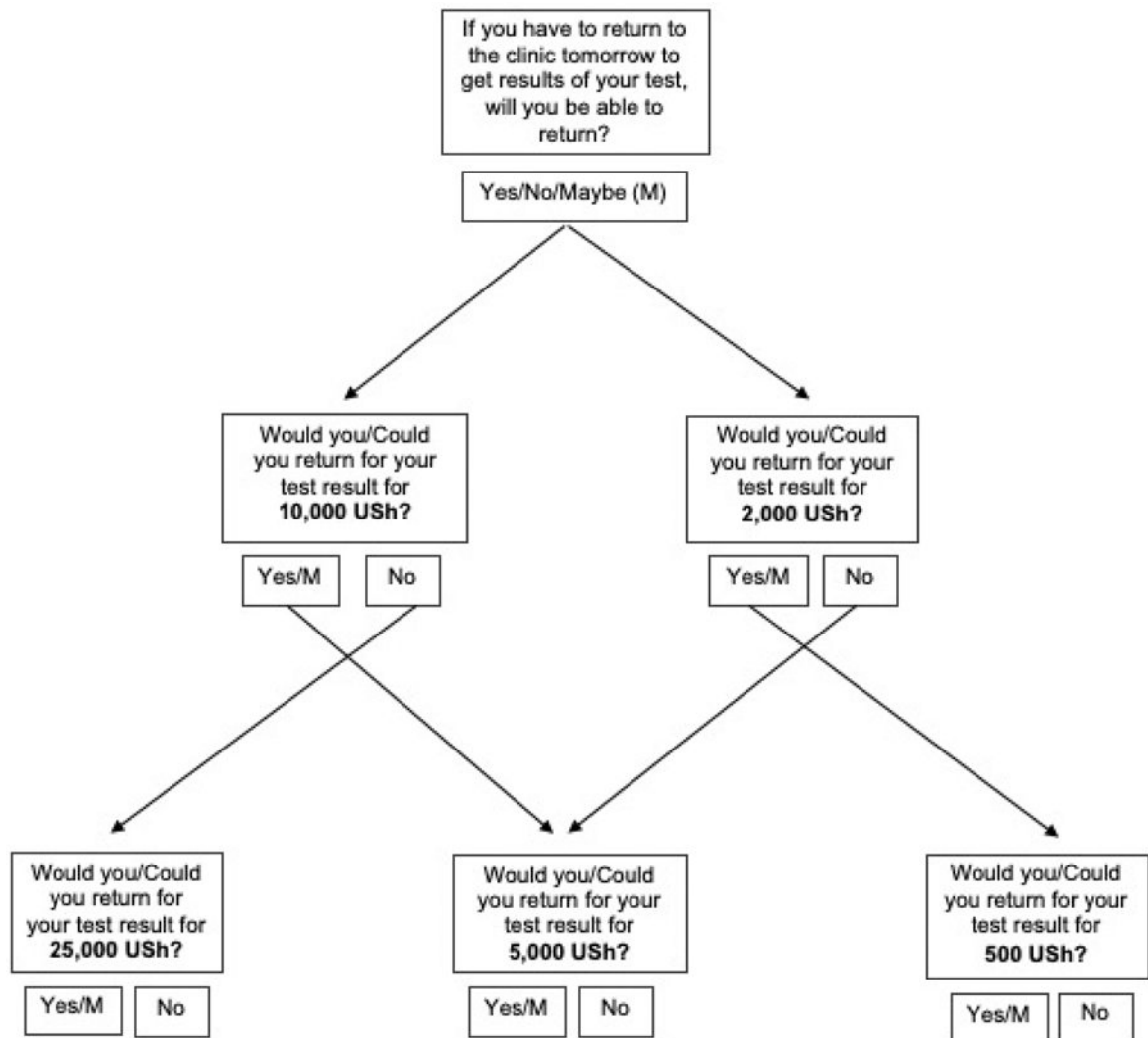


Figure 1. Willingness-to-accept survey algorithm.

Participants were asked whether they would be willing to accept a randomly assigned starting value of either 2,000 Ugandan Shillings (USh) or 10,000 USh to facilitate return to the health center for completion of diagnostic evaluation. Subsequent offered values would either be increased or decreased, depending on whether the participant declined or accepted the initial or previous offered value. Overall values offered ranged from 500 USh to 25,000 USh.

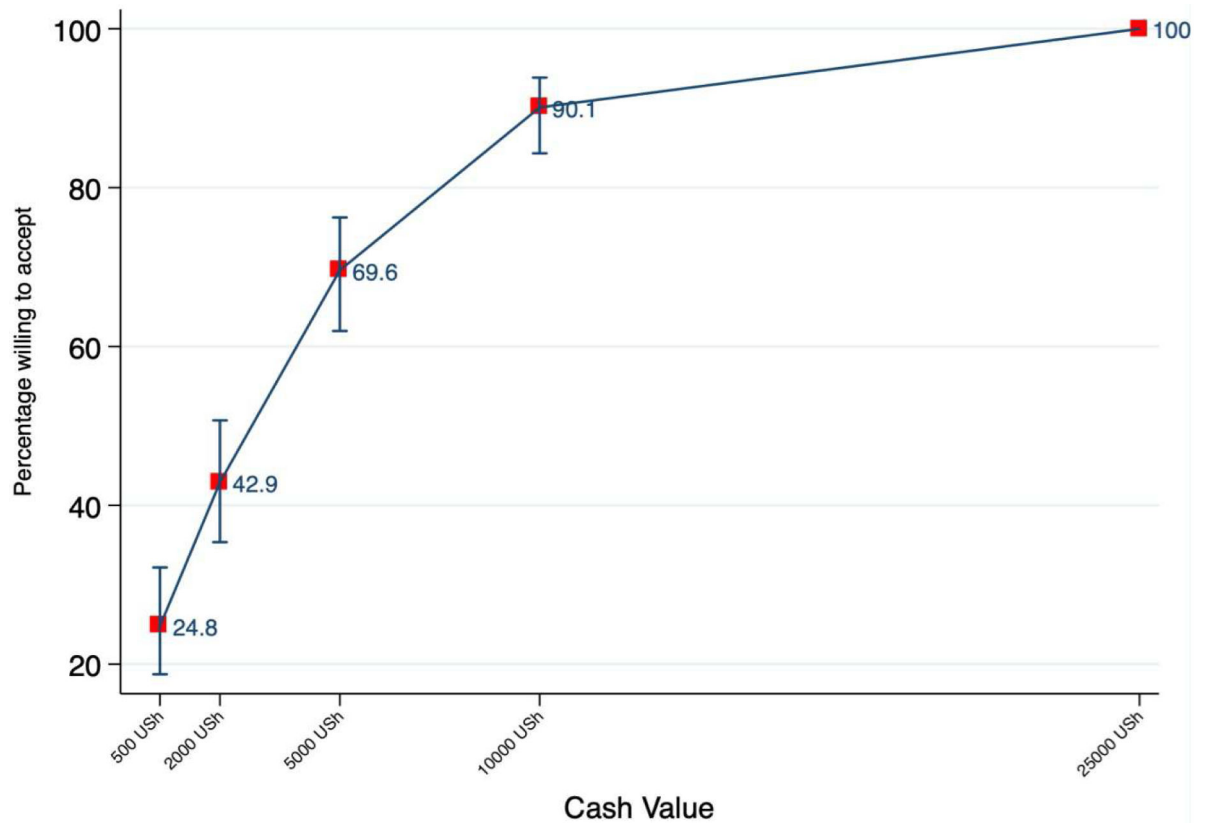


Figure 2. Percentage of participants willing to accept varying incentives for receiving TB test results, N=161.

1. At the time of data collection US\$1.00 was equivalent to 3,745 USh.

USh: Ugandan Shillings

Table 1.

Patient demographic and socioeconomic characteristics, Uganda 2018 (n=161).

	Overall (n=161)
	N (%) or Median (IQR)
Sex	
Male	73 (45.3)
Female	88 (54.7)
Age	38 (28-48)
Community health center location	
Rural	110 (68.3)
Urban	51 (31.7)
Marital status	
Single	11 (6.8)
Married (Monogamous)	69 (42.9)
Married (Polygamous)	18 (11.2)
Divorced/Separated/Widowed	63 (39.1)
Has children	145 (90.1)
Number of children (n=144)	4 (2-6)
Adults in household	2 (1-3)
Education level	
None	20 (12.4)
Primary	104 (64.6)
Secondary	33 (20.5)
Tertiary	3 (1.9)
Vocational/other	1 (0.6)
Employment status	
Unemployed	17 (10.6)
Informal	132 (82.0)
Formal	9 (5.6)
Student	2 (1.2)
Civil Servant/other	1 (0.6)
Household Income per month (USh) (n=134) ^{1,2}	150,000 (70,000-300,000)
Personal Income per month (USh) (n=141) ²	100,000 (50,000-200,000)

¹ 16.8% of participants missing information on household income.

² At the time of data collection US\$1.00 was equivalent to 3,745 USH.

USH: Ugandan Shillings

Patient perceived barriers to TB medication and community health center visits and experiences and attitudes towards incentives by income quartile (N = 161).

Table 2.

	N (%)				P-value	
	Overall n=161	Bottom Quartile (n=37)	2nd Quartile (n=35)	3rd Quartile (n=35)		Highest Quartile (n=26)
Would you return to take free medication:						
Daily (yes)	17 (10.6)	2 (5.4)	6 (17.1)	0 (0.0)	6 (23.1)	0.02
Weekly (yes)	76 (48.4)	18 (50.0)	18 (52.9)	12 (34.3)	14 (53.9)	0.47
Monthly (yes)	151 (96.2)	32 (88.9)	34 (100.0)	34 (97.1)	26 (100.0)	0.13
Barriers to health center visits						
Transportation	84 (62.2)	25 (75.8)	18 (64.3)	22 (62.9)	6 (35.3)	0.02
Inconvenience	29 (21.5)	8 (24.2)	6 (21.4)	4 (11.4)	4 (23.5)	
Possible job loss	14 (10.4)	0 (0.0)	3 (10.7)	5 (14.3)	5 (29.4)	
Other	8 (6.0)	0 (0.0)	1 (3.6)	4 (11.4)	2 (11.8)	
Able to return tomorrow for test results (yes)	155 (96.3)	36 (97.3)	32 (91.4)	34 (94.4)	26 (100.0)	0.40
If yes, will it be easy/difficult to return						
Easy	93 (60.0)	20 (55.6)	22 (68.8)	18 (52.9)	17 (65.4)	0.51
Difficult	62 (40.0)	16 (44.4)	10 (31.3)	16 (47.1)	9 (34.6)	
Received incentive before						
Incentive helped	17 (10.6)	5 (13.5)	7 (20.0)	3 (8.3)	0 (0.0)	0.09
	17 (100.0)	5 (100.0)	7 (100.0)	3 (100.0)	-	-
Any negative feelings towards incentives (yes)	9 (5.6)	34 (91.9)	34 (97.1)	33 (91.7)	26 (100.0)	0.37
Cash would be accepted in community (yes)	160 (99.4)	36 (97.3)	35 (100.0)	36 (100.0)	26 (100.0)	0.45
Transportation vouchers would be accepted in community (yes)	158 (98.8)	37 (100.0)	33 (97.1)	36 (100.0)	26 (100.0)	0.40
Food would be accepted in community (yes)	156 (96.9)	36 (97.3)	34 (97.1)	35 (97.2)	25 (96.2)	0.99
Preferred incentive type to return to finish evaluation (self)						
Cash	84 (52.2)	19 (51.4)	19 (54.3)	17 (47.2)	13 (50.0)	
Transportation vouchers	54 (33.5)	13 (35.1)	9 (25.7)	15 (41.7)	8 (30.8)	
Food	15 (9.3)	4 (10.8)	4 (11.4)	2 (5.6)	4 (15.4)	0.92
Insurance	3 (1.9)	0 (0.0)	1 (2.9)	1 (2.8)	1 (3.9)	
Other	5 (3.1)	1 (2.7)	2 (5.7)	1 (2.8)	0 (0.0)	

	N (%)				p-value
	Overall n=161	Bottom Quartile (n=37)	2nd Quartile (n=35)	3rd Quartile (n=35)	
Preferred incentive type to return to finish evaluation (community)					
Cash	62 (38.5)	14 (37.8)	12 (34.3)	12 (33.3)	12 (46.2)
Transportation vouchers	73 (45.3)	17 (46.0)	15 (42.9)	18 (50.0)	9 (34.6)
Food	22 (13.7)	5 (13.5)	6 (17.1)	5 (13.9)	5 (19.2)
Other	4 (2.5)	1 (2.7)	2 (5.7)	1 (2.8)	0 (0.0)
Prefer incentive conditional on diagnostic evaluation completion - same-day (yes)	79 (50.0)	12 (33.3)	24 (70.6)	14 (38.9)	17 (65.4)
Prefer incentive conditional on diagnostic evaluation completion - multi-day (yes)	134 (84.3)	35 (94.6)	24 (70.6)	32 (88.9)	19 (73.1)
Would take medication if doctor prescribed it for free (yes)	158 (98.1)	37 (100.0)	22 (94.3)	35 (97.2)	26 (100.0)

16.8% of participants missing information about household income

Willingness to accept incentives for receiving TB test results by household income quartile (N=161).¹

Table 3.

	Overall (n=158)	Bottom quartile (n=37)	2 nd quartile (n=35)	3 rd quartile (n=35)	Highest (n=25)	p-value
	N (%) or Median (IQR)					
Monthly household Income (USh) ¹	150,000 (70,000-300,000)	50,000 (30,000-50,000)	100,000 (80,000-150,000)	255,000 (200,000-300,000)	460,000 (400,000-550,000)	<0.001
Accepted 500 USh	40 (24.8)	10 (27.0)	11 (31.4)	4 (11.1)	7 (26.9)	0.20
Accepted 2,000 USh	69 (42.9)	17 (46.0)	18 (51.4)	8 (22.2)	12 (46.2)	0.06
Accepted 5,000 USh	112 (69.6)	30 (81.1)	22 (62.9)	18 (50.0)	20 (76.9)	0.02
Accepted 10,000 USh	145 (90.1)	33 (89.2)	33 (94.3)	30 (83.3)	23 (88.5)	0.54
Accepted 25,000 USh	161 (100.0)	37 (100.0)	35 (100.0)	36 (100.0)	26 (100.0)	-

¹ 16.8% of total participants missing information on household income.

² At the time of data collection US\$1.00 was equivalent to 3,745 USH

USH: Ugandan Shillings

Factors associated with increased incentive values to return to the health center to complete diagnostic evaluation, based on ordered logistic regression.

Table 4.

	Unadjusted			Adjusted		
	OR (95% CI)	p-value	OR (95% CI)	p-value	OR (95% CI)	p-value
Age >38 years	0.55 (0.32-0.94)	0.03	0.44 (0.22-0.91)	0.03		
Male gender	0.98 (0.50-1.96)	0.97	-			
Urban community health center	0.64 (0.22-1.86)	0.41	0.46 (0.16-1.35)	0.16		
Married	1.31 (0.77-2.22)	0.32	-			
Difficult to return to health center	2.12 (1.48-3.05)	<0.001	2.53 (1.59-4.02)	<0.001		
Income quartile						
2nd highest	1.06 (0.51-2.21)	0.87	1.13 (0.51-2.47)	0.76		
3rd highest	2.34 (1.23-4.45)	0.01	2.38 (1.20-4.69)	0.01		
Lowest income quartile	1.00 (0.39-2.63)	0.99	1.15 (0.50-2.65)	0.73		