

# UCLA

## UCLA Previously Published Works

### Title

Author Correction: Oil palm expansion and deforestation in Southwest Cameroon associated with proliferation of informal mills

### Permalink

<https://escholarship.org/uc/item/3j43j1hd>

### Journal

Nature Communications, 12(1)

### ISSN

2041-1723

### Authors

Ordway, Elsa M  
Naylor, Rosamond L  
Nkongho, Raymond N  
et al.

### Publication Date

2021-04-01

### DOI

10.1038/s41467-021-22418-3

### Copyright Information


This work is made available under the terms of a Creative Commons Attribution License, available at <https://creativecommons.org/licenses/by/4.0/>

Peer reviewed

<https://doi.org/10.1038/s41467-021-22418-3>

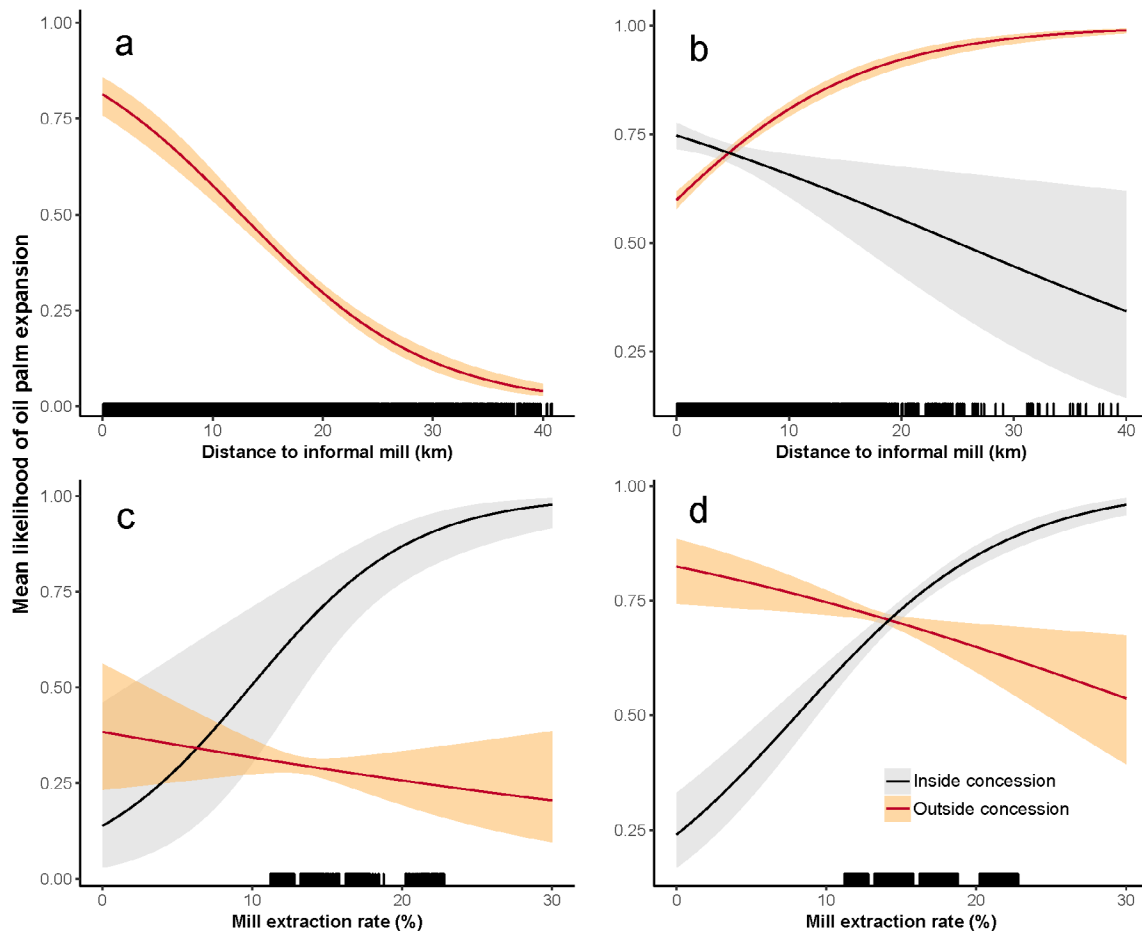
OPEN

# Author Correction: Oil palm expansion and deforestation in Southwest Cameroon associated with proliferation of informal mills

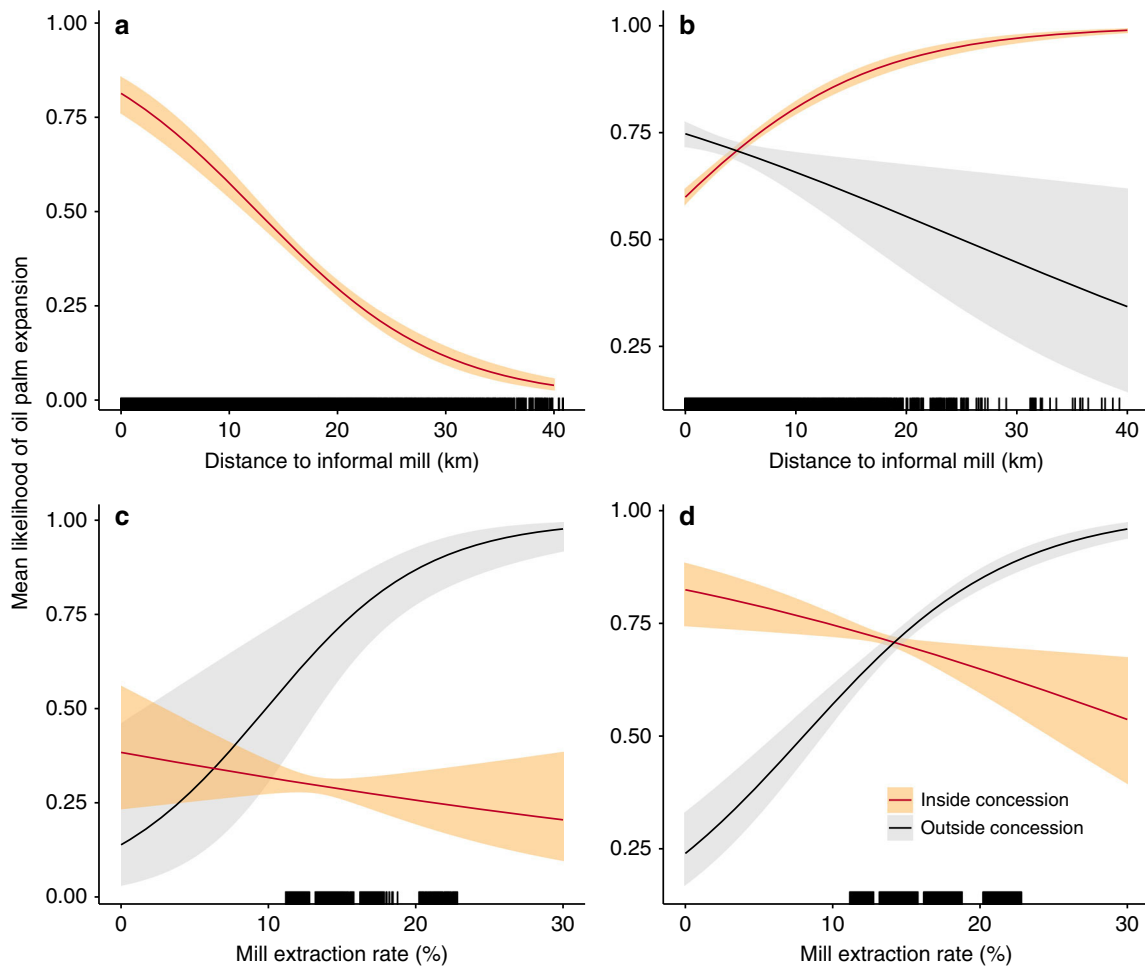
Elsa M. Ordway , Rosamond L. Naylor, Raymond N. Nkongho & Eric F. Lambin

Correction to: *Nature Communications* <https://doi.org/10.1038/s41467-018-07915-2>, published online 10 January 2019.

The original version of this Article contained an error in Fig. 5, in which the key labels for the lines representing ‘Inside concession’ and ‘Outside concession’ were mislabelled. The correct version of Fig. 5 is:




which replaces the previous incorrect version:



This has been corrected in both the PDF and HTML versions of the Article.

Published online: 09 April 2021

 **Open Access** This article is licensed under a Creative Commons Attribution 4.0 International License, which permits use, sharing, adaptation, distribution and reproduction in any medium or format, as long as you give appropriate credit to the original author(s) and the source, provide a link to the Creative Commons license, and indicate if changes were made. The images or other third party material in this article are included in the article's Creative Commons license, unless indicated otherwise in a credit line to the material. If material is not included in the article's Creative Commons license and your intended use is not permitted by statutory regulation or exceeds the permitted use, you will need to obtain permission directly from the copyright holder. To view a copy of this license, visit <http://creativecommons.org/licenses/by/4.0/>.

© The Author(s) 2021