

UC Office of the President

Research Grants Program Office (RGPO) Funded Publications

Title

Generation of two induced pluripotent stem cell lines from breast cancer patients carrying BRCA2 variants

Permalink

<https://escholarship.org/uc/item/3rx5d843>

Authors

Zhang, Mao

Liu, Wenqiang

Li, Audrey

et al.

Publication Date

2023-10-01

DOI

10.1016/j.scr.2023.103219

Peer reviewed



Lab Resource: Multiple Cell Lines



Generation of two induced pluripotent stem cell lines from breast cancer patients carrying BRCA2 variants

Mao Zhang^a, Wenqiang Liu^a, Audrey Li^a, Min H. Htet^a, Rebecca Yu^d, Melinda L. Telli^c, Joseph C. Wu^{a,b,*}

^a Stanford Cardiovascular Institute, Stanford University School of Medicine, Stanford, CA 94305, USA

^b Department of Medicine, Division of Cardiovascular Medicine, Stanford University School of Medicine, Stanford, CA 94305, USA

^c Department of Medicine, Division of Medical Oncology, Stanford University School of Medicine, Stanford, CA 94305, USA

^d Greenstone Bioscience, Palo Alto, CA 94304, USA

ABSTRACT

Germline pathogenic variants in the *BRCA2* gene are strongly correlated with an elevated risk of developing breast cancer. Two specific *BRCA2* variants, *c.8167G>C* (p.Asp2723His) and *c.1583del* (p.Asn528fs), have been identified from individuals with a family history of breast cancer. Here we generated two iPSC lines from breast cancer patients who are heterozygous carriers of these two variants. These iPSCs exhibit pluripotency and demonstrate the capability to differentiate into three germ layers. These iPSC lines represent a valuable resource for personalized pre-clinical research, offering new opportunities to explore the underlying mechanisms of breast cancer and develop targeted therapeutic approaches.

Resource table

Unique stem cell lines identifier	1. SCVi081-A 2. SCVi082-A
Alternative name(s) of stem cell lines	1. SCVi2535 (SCVi081-A) 2. SCVi2838 (SCVi082-A)
Institution	Stanford Cardiovascular Institute, Stanford, CA, US
Contact information of distributor	Joseph C. Wu, joewu@stanford.edu
Type of cell lines	iPSC
Origin	Human
Additional origin info required for human ESC or iPSC	Age: 54 (SCVi081-A) and 43 (SCVi082-A) Sex: Female Ethnicity: White (SCVi081-A) and East Asian (SCVi082-A)
Cell Source	PBMCs
Clonality	Clonal
Method of reprogramming	Nonintegrating Sendai virus expression of human <i>OCT4</i> , <i>SOX2</i> , <i>KLF4</i> , and <i>c-MYC</i>
Genetic Modification	YES
Type of Genetic Modification	Spontaneous/naturally occurred mutation
Evidence of the reprogramming transgene loss	RT-qPCR
Associated disease	Breast cancer
Gene/locus	<i>BRCA2</i> : 13q13.1 SCVi081-A: Chr13:32363369 (GRCh38) SCVi082-A: Chr13:32333060 (GRCh38)
Date archived/stock date	05/07/2023

(continued on next column)

Resource table (continued)

Cell line repository/bank	https://hpscrg.eu/cell-line/SCVi081-A https://hpscrg.eu/cell-line/SCVi082-A
Ethical approval	The generation of these iPSC lines was approved by the Administrative Panel on Human Subjects Research under Institutional Review Board (IRB) #29904 "Derivation of Human Induced Pluripotent Stem Cells (Biorepository)"

1. Resource utility

The pathogenic variant *BRCA2 c.8167G>C* (p.Asp2723His) (ClinVar ID:52515) and *c.1583del* (p.Asn528fs) (ClinVar ID:1190132) have been detected in individuals with breast cancer. Human iPSC lines harboring these mutations are valuable resources for tissue-specific cell types that can be used for investigating disease mechanisms and drug screening (Table 1).

2. Resource details

BRCA2 is a critical tumor suppressor that maintains genome integrity by regulating DNA repair and stabilizing the replication forks under stress (Gudmundsdottir and Ashworth, 2006). Pathogenic germline

* Corresponding author at: 265 Campus Drive, G1120B, Stanford, CA 94304, USA.

E-mail address: joewu@stanford.edu (J.C. Wu).

<https://doi.org/10.1016/j.scr.2023.103219>

Received 25 July 2023; Received in revised form 22 September 2023; Accepted 30 September 2023

Available online 2 October 2023

1873-5061/© 2023 The Author(s). Published by Elsevier B.V. This is an open access article under the CC BY-NC-ND license (<http://creativecommons.org/licenses/by-nc-nd/4.0/>).

Table 1
Characterization and validation.

Classification	Test	Result	Data
Morphology	Photography Brightfield	Visual record of the line: normal	Fig. 1 panel A
Phenotype	Qualitative analysis: Immunofluorescence staining	Positive expression of pluripotency markers: Oct3/4, Nanog, Sox2.	Fig. 1 panel C
	Quantitative analysis: RT-qPCR	High expression levels of pluripotency markers (Nanog, Sox2, and Pou5f1) in iPSCs but absent in differentiated iPSC-CMs	Fig. 1 panel B
Genotype	Karyotype (G-banding) and resolution	Karyostat™ Assay, resolution 1–2 Mb: Normal karyotype: 46, XX for both iPSC lines	Fig. 1 panel D
Identity	Microsatellite PCR (mPCR) or STR analysis	N/A	N/A
		16 loci tested, 100 % identical	Submitted in archive with journal
Mutation analysis (IF APPLICABLE)	Sequencing	Heterozygous for both lines SCVii081-A: c.8167G>C SCVii082-A: c.1583del	Fig. 1 panel F
Microbiology and virology	Southern Blot OR WGS	N/A	N/A
	Mycoplasma	Mycoplasma testing by luminescence: Negative	Fig. 1 panel E
Differentiation potential	Directed differentiation	Positive IF staining of three germ layer markers	Fig. 1 panel G
List of recommended germ layer markers	Expression of these markers has to be demonstrated at mRNA (RT PCR) or protein (IF) levels, at least 2 markers need to be shown per germ layer	Positive expression of germ layer markers: Ectoderm: PAX6, OTX2; Endoderm: SOX17, FOXA2; Mesoderm: BRACHYURY, TBX6	Fig. 1 panel G
Donor screening (OPTIONAL)	HIV 1 + 2 Hepatitis B, Hepatitis C	N/A	N/A
Genotype additional info (OPTIONAL)	Blood group genotyping	N/A	N/A
	HLA tissue typing	N/A	N/A

BRCA2 variants confer a high risk of breast and ovarian cancer (Loibl et al., 2021). Indeed, individuals carrying these variants have a lifetime risk of 55 % for breast cancer and 16.5 % for ovarian cancer (Mavaddat et al., 2013). Consequently, genetic testing for *BRCA2* variants has become integral to clinical practice. However, the specific cancer risk associated with different locations of mutations and their functional effects are not yet fully understood (Guidugli et al., 2014). This knowledge gap often causes anxiety and uncertainty among individuals with *BRCA2* variants. Therefore, there is an urgent need for experimental evidence to comprehensively investigate the contribution of *BRCA2* variants to the initiation and progression of breast and ovarian cancers. In this study, we have successfully generated two human iPSC lines from individuals carrying heterozygous pathogenic variants in the *BRCA2* gene. These iPSC lines represent a valuable resource for future investigations on the effects of *BRCA2* mutations on the development and progression of breast cancer, and they can also be used for drug screening in precision medicine applications.

We recruited two breast cancer patients, a 54-year-old white female who developed breast cancer with stage IIB T4N1M0 of the left breast and a 43-year-old East Asian female who developed breast cancer with stage IIB cT2N1M0 of the right breast, carrying c.8167G>C and c.1583del, respectively. Using the peripheral blood mononuclear cells (PBMCs) obtained from these patients (Jahng et al., 2021), we successfully generated two human iPSC lines named SCVii081-A and SCVii082-A. These iPSC lines exhibited the typical morphology of iPSCs (Fig. 1A) and robust expression of pluripotency markers such as SOX2, NANOG, and POU5F1 (Fig. 1B), which was further confirmed by immunofluorescence (Fig. 1C). Importantly, at passage 17, the expression of the non-integrating Sendai virus used for reprogramming was no longer detectable in SCVii081-A and SCVii082-A (Fig. 1B). The Karyotyping analysis confirmed that both iPSC lines had normal chromosome profiles in both cell lines (Fig. 1D). To ensure the quality of the iPSC lines, we tested them for mycoplasma contamination, and both lines were found to be mycoplasma-negative (Fig. 1E). The presence of the *BRCA2* mutations was confirmed by Sanger sequencing. SCVii081-A exhibited double peaks (G and C) at position c.8167 (Fig. 1F left panel), indicating a heterozygous mutation from G to C, resulting in a missense mutation at the protein level. In SCVii082-A, the sequencing showed double peaks (A and C) at position c.1583, followed by continuous doublets (Fig. 1F right panel), indicating a heterozygous deletion of A and resulting in a frameshift mutation. Short tandem repeat analysis confirmed that SCVii081-A and SCVii082-A had identical DNA profiles to their donor PBMCs (Submitted in the archive with the journal). Furthermore, we assessed the ability of these iPSC lines to differentiate into the three germ layers. The results demonstrated that both SCVii081-A and SCVii082-A retained the capacity to differentiate into ectoderm, endoderm, and mesoderm lineages (Fig. 1G).

3. Materials and methods

3.1. Generation of human induced pluripotent stem cells

The donors' blood samples were collected upon signed informed consent at Stanford University. PBMCs were isolated and purified from the blood samples by Percoll^R gradient separation and then maintained in the StemPro™-34 SFM medium (100 ng/mL SCF, 100 ng/mL FLT3, 20 ng/mL IL-3, 20 ng/mL IL-6, and 20 ng/mL EPO). For reprogramming, PBMCs were plated at a density of 3×10^4 cells per cm² and transduced using the CytoTune™-iPS 2.0 Sendai Reprogramming Kit (ThermoFisher Scientific). At day 5 post-transduction, cells were resuspended and plated on Matrigel-coated plates with StemPro™-34 medium. At day 7 post-transduction, the media was changed to 1:1 mix of StemMACS™ iPS-Brew medium (Miltenyi Biotec) and StemPro™-34 medium until colonies appeared. On day 8, the culture medium was fully switched to the Brew medium. At around day 10–15 post-transduction, iPSC colonies appeared and were picked under the microscope for expansion.

3.2. RT-qPCR

RNA was extracted by using the miRNeasy Micro Kit (Qiagen). The cDNA was generated from 1 µg RNA with the iScript™ Reverse Transcription Supermix (BIO-RAD). The expression levels of target genes were examined using commercially available probes (Table 2) and the TagMan™ Universal PCR Master Mix (ThermoFisher Scientific).

3.3. Immunofluorescence staining

At room temperature, cells were fixed with 4 % paraformaldehyde for 20 min. After twice washes with DPBS, the fixed cells were incubated with DPBS containing 0.1 % Triton X-100 for 10 min, followed by incubation with the blocking solution (DPBS with 1 % goat serum) for 1 h. After three times washes, the cells were incubated with the primary antibodies (Table 2) overnight at 4 °C. On day 2, the cells were washed

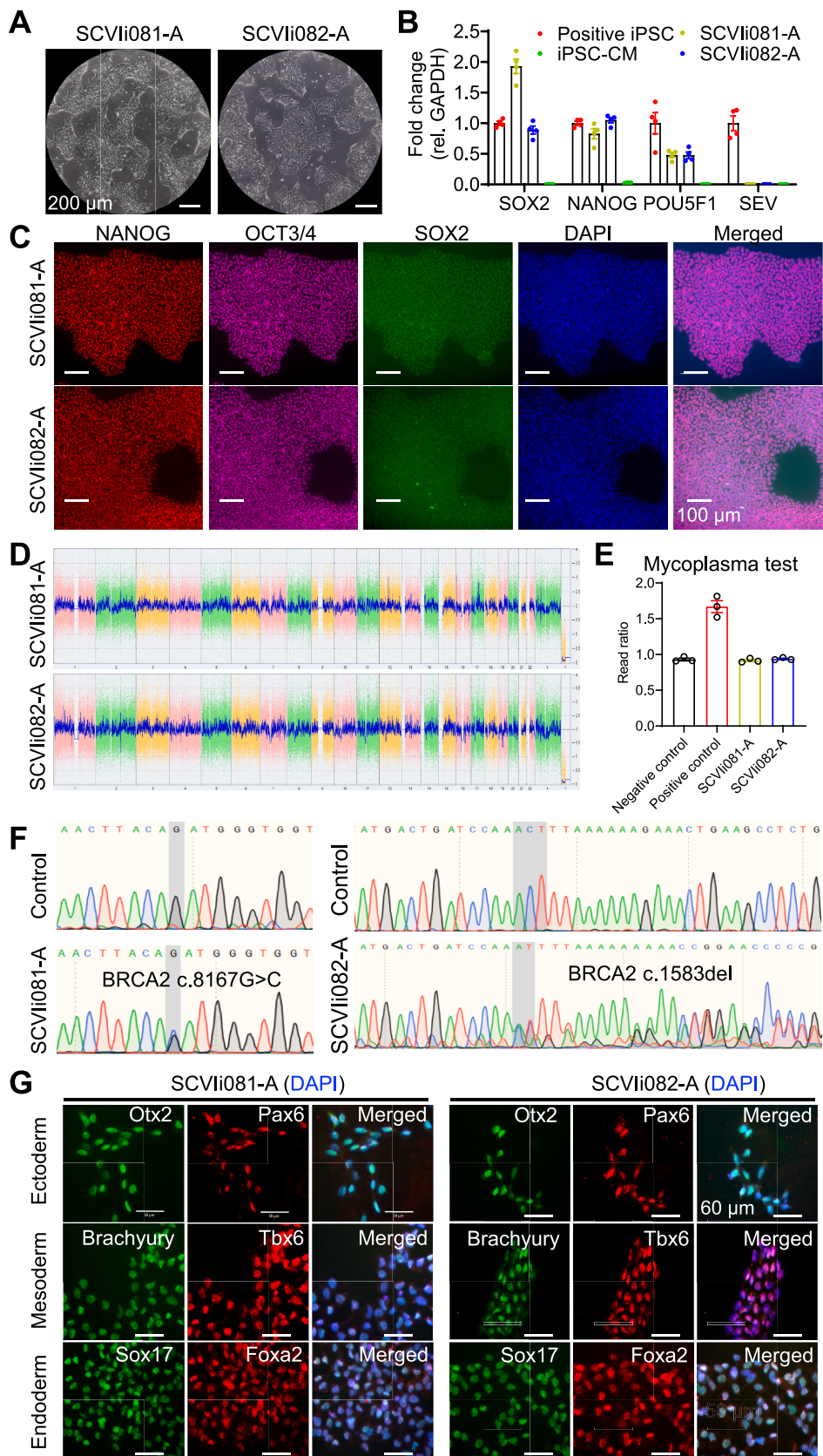


Fig. 1.

Table 2
Reagents details.

	Antibodies used for immunocytochemistry/flow-cytometry			
	Antibody	Dilution	Company Cat #	RRID
Pluripotency Markers	Rabbit Anti-Nanog	1:100	Proteintech Cat # 14295-1-AP	RRID: AB_1607719
	Mouse IgG _{2b} κOct3/4 antibody	1:100	Santa Cruz Biotechnology Cat # sc-5279	RRID: AB_628051
	Goat IgG anti-Sox2	1:100	R and D Systems Cat # AF2018	RRID: AB_355110
Ectoderm Markers	Goat Anti-Otx2	1:200	R and D Systems Cat # AF1979	RRID: AB_2157172
	Rabbit Anti-Pax6	1:200	Thermo Fisher Scientific Cat # 42-6600	RRID: AB_2533534
Endoderm Markers	Goat Anti-Sox17	1:200	R and D Systems Cat # AF1924	RRID: AB_355060
	Rabbit Anti-Foxa2	1:250	Thermo Fisher Scientific Cat # 701,698	RRID: AB_2576439
Mesoderm Markers	Goat Anti-Brachyury	1:200	R and D Systems Cat # AF2085	RRID: AB_2200235
	Rabbit Anti-Tbx6	1:200	Thermo Fisher Scientific Cat # PA5-35102	RRID: AB_2552412
Secondary antibodies	Alexa Fluor 647 Goat Anti-Mouse IgG _{2b}	1:250	Thermo Fisher Scientific Cat # A-21242	RRID: AB_2535811
	Alexa Fluor 555 Goat Anti-Rabbit IgG (H + L)	1:500	Thermo Fisher Scientific Cat # A-21428	RRID: AB_141784
	Alexa Fluor 488 Donkey Anti-Goat IgG	1:1000	Thermo Fisher Scientific Cat # A-11055	RRID: AB_2534102
Primers				
	Target	Size of band	Forward/Reverse primer (5'-3')	
Sendai virus plasmid (qPCR)	Sendai virus genome	181 bp	Mr042698800_mr (Thermo Fisher Scientific)	
Pluripotency Markers (qPCR)	NANOG	109 bp	Hs02387400_g1 (Thermo Fisher Scientific)	
House-Keeping Genes (qPCR)	POU5F1	77 bp	Hs00999632_g1 (Thermo Fisher Scientific)	
Pluripotency Markers (qPCR)	SOX2	86 bp	Hs04234836_s1 (Thermo Fisher Scientific)	
House-Keeping Genes (qPCR)	GAPDH	157 bp	Hs02786624_g1 (Thermo Fisher Scientific)	
Genotyping	BRCA2 c.8167G>C	350 bp	Forward: 5'-TCACITTTAGATATGATACG-3' Reverse: 5'-TTCTGGGGCTTCAAGAGGTG-3'	
Genotyping	BRCA2 c.1583del	350 bp	Forward: 5'-AGGAAACAGTGGTAAATAAG-3' Reverse: 5'-TGCATTCTCAAAGCTACAG-3'	

three times with DPBS and incubated with the secondary antibodies (Table 2) for 1 h. After three times washes with DPBS, nuclei were counterstained with NucBlue Probes (ThermoFisher Scientific) for imaging.

3.4. Karyotyping

Around 2 million cells were collected at passage 17 and then subjected to the KaryoStat™ assay (ThermoFisher Scientific) analysis.

3.5. Targeted sequencing

The genomic DNA from each cell line was extracted using the QuickExtract™ DNA Extraction Solution. The PCR assay was performed with the PrimeSTAR GXL DNA Polymerase (Clontech) and the primers in Table 2. The PCR products were purified and sequenced by the Stanford Protein and Nuclear Acid (PAN) facility.

3.6. Mycoplasma detection

The culture medium from full confluent iPSCs was collected for the mycoplasma test with the MycoAlert™ Detection Kit (Lonza).

3.7. Trilineage differentiation

The StemXVivo Ectoderm kit (R & D systems) and the StemDiff™ Definitive Endoderm differentiation kit (STEMCELL™ Technologies) were used for ectoderm and endoderm differentiation. Mesoderm differentiation was induced by RPMI media (B27 Minus Insulin supplement with 6 μM CHIR (Selleck Chemicals)) for 48 h.

3.8. STR analysis

Genomic DNA was extracted with the DNeasy Blood & Tissue Kit (Qiagen). One ng genomic DNA was used for the PCR assay with the CLA Identifiler™ Direct PCR Amplification Kit (ThermoFisher Scientific). Capillary electrophoresis was performed on ABI3130xl by the Stanford PAN facility for the fragmental analysis.

Declaration of Competing Interest

The authors declare the following financial interests/personal relationships which may be considered as potential competing interests: J. C.W. is a co-founder of Greenstone Biosciences. The authors declare that they have no known competing financial interests or personal relationships that could have appeared to influence the work reported in this paper.

Data availability

Data will be made available on request.

Acknowledgments

This work was supported by National Institutes of Health 75N92020D00019, R01 HL130020, R01 HL141371, R01 HL150693, R01 HL163680 (JCW), and the Tobacco-Related Disease Research Program (TRDRP) T32FT4853 (M. Z.).

References

- Gudmundsdottir, K., Ashworth, A., 2006. The roles of BRCA1 and BRCA2 and associated proteins in the maintenance of genomic stability. *Oncogene* 25, 5864–5874. <https://doi.org/10.1038/sj.onc.1209874>.
- Guidugli, L., Carreira, A., Caputo, S.M., Ehlen, A., Galli, A., Monteiro, A.N.A., Neuhausen, S.L., Hansen, T.V.O., Couch, F.J., Vreeswijk, M.P.G., ENIGMA Consortium, 2014. Functional assays for analysis of variants of uncertain

- significance in BRCA2. *Human Mutation* 35, 151–164. <https://doi.org/10.1002/humu.22478>.
- Jahng, J.W.S., Black, K.E., Liu, L., Bae, H.R., Perez, M., Ashley, E.A., Sallam, K., Wu, J.C., 2021. Generation of three induced pluripotent stem cell lines, SCVIi003-A, SCVIi004-A, SCVIi005-A, from patients with ARVD/C caused by heterozygous mutations in the PKP2 gene. *Stem Cell Research* 53, 102284. <https://doi.org/10.1016/j.scr.2021.102284>.
- Loibl, S., Poortmans, P., Morrow, M., Denkert, C., Curigliano, G., 2021. Breast cancer. *The Lancet* 397, 1750–1769. [https://doi.org/10.1016/S0140-6736\(20\)32381-3](https://doi.org/10.1016/S0140-6736(20)32381-3).
- Mavaddat, N., Peock, S., Frost, D., Ellis, S., Platte, R., Fineberg, E., Evans, D.G., Izatt, L., Eeles, R.A., Adlard, J., Davidson, R., Eccles, D., Cole, T., Cook, J., Brewer, C., Tischkowitz, M., Douglas, F., Hodgson, S., Walker, L., Porteous, M.E., Morrison, P.J., Side, L.E., Kennedy, M.J., Houghton, C., Donaldson, A., Rogers, M.T., Dorkins, H., Miedzybrodzka, Z., Gregory, H., Eason, J., Barwell, J., McCann, E., Murray, A., Antoniou, A.C., Easton, D.F., EMBRACE, 2013. Cancer risks for BRCA1 and BRCA2 mutation carriers: results from prospective analysis of EMBRACE. *J. Natl. Cancer Institute* 105, 812–822. <https://doi.org/10.1093/jnci/djt095>.