

# UC San Diego

## UC San Diego Previously Published Works

### Title

Global epidemiology of HIV among female sex workers: influence of structural determinants

### Permalink

<https://escholarship.org/uc/item/3s87d6ms>

### Journal

The Lancet, 385(9962)

### ISSN

0140-6736

### Authors

Shannon, Kate  
Strathdee, Steffanie A  
Goldenberg, Shira M  
[et al.](#)

### Publication Date

2015

### DOI

10.1016/s0140-6736(14)60931-4

Peer reviewed

Published in final edited form as:

*Lancet*. 2015 January 3; 385(9962): 55–71. doi:10.1016/S0140-6736(14)60931-4.

## GLOBAL EPIDEMIOLOGY OF HIV AMONG FEMALE SEX WORKERS: INFLUENCE OF STRUCTURAL DETERMINANTS

K Shannon, PhD<sup>1</sup>, SA Strathdee, PhD<sup>2</sup>, SM Goldenberg, PhD<sup>1</sup>, P Duff, MSc<sup>1</sup>, P Mwangi, MA<sup>3</sup>, M Rusakova, PhD<sup>4</sup>, S Reza-Paul, PhD<sup>5</sup>, J Lau, PhD<sup>6</sup>, K Deering, PhD<sup>1</sup>, M Pickles, PhD<sup>7</sup>, and M-C Boily, PhD<sup>7</sup>

<sup>1</sup> Gender and Sexual Health Initiative, BC Centre for Excellence in HIV/AIDS, University of British Columbia, Vancouver, Canada

<sup>2</sup> University of California San Diego School of Medicine, California, United States

<sup>3</sup> Bar Hostesses Empowerment and Support Program; African Sex Workers

<sup>4</sup> Alliance, Nairobi, Kenya

<sup>5</sup> Stelit NGO, St Petersburg, Russia

<sup>6</sup> Ashodaya Samathi Collective, Mysore, India

<sup>7</sup> Chinese University of Hong Kong, China

<sup>8</sup> Imperial College, London, United Kingdom

### SUMMARY

Female sex workers (FSWs) bear a disproportionately large burden of HIV infection worldwide. Despite decades of research and programme activity, the epidemiology of HIV and the role that structural determinants have in mitigating or potentiating HIV epidemics and access to care for FSWS is poorly understood. We reviewed available published data for HIV prevalence and incidence, condom use, and structural determinants among this group. Only 87 (43%) of 204 unique studies reviewed explicitly examined structural determinants of HIV. Most studies were from Asia, with few from areas with a heavy burden of HIV such as sub-Saharan Africa, Russia, and eastern Europe. To further explore the potential effect of structural determinants on the course of epidemics, we used a deterministic transmission model to simulate potential HIV infections averted through structural changes in regions with concentrated and generalised epidemics, and high HIV prevalence among FSWS. This modelling suggested that elimination of sexual violence

---

**Corresponding Author:** Kate Shannon, PhD, Associate Professor of Medicine University of British Columbia, Director, Gender and Sexual Health Initiative, BC Centre for Excellence in HIV/AIDS, 1081 Burrard Street, Vancouver, BC, V5N 1P7, Canada, Tel: 1(604) 806---9459, kshannon@cfeenet.ubc.ca.

#### Contributors

KS conceptualised the report, was lead author, and oversaw all stages. M-CB devised and oversaw the modelling process, and M-CB and MRP did the modelling analysis and wrote corresponding methods, results, and interpretations, with support from KD in the early stages. SMG, PD, SAS, and KS devised the review stages. SMG and PD carried out the review process with all co-authors and SMG drafted the review methods. SMG, PD, PM, SR-P, MR, JL, SAS, and KS extracted and categorised the data for the systematic review with a standard data extraction form. PM and SR-P provided local context input and grey literature to inform the modelling. All authors provided input on interpretation of results and report writing.

#### Declaration of interests

We declare no competing interests.

alone could avert 17% of HIV infections in Kenya (95% uncertainty interval [UI] 1–31) and 20% in Canada (95% UI 3–39) through its immediate and sustained effect on non-condom use) among FSWs and their clients in the next decade. In Kenya, scaling up of access to antiretroviral therapy among FSWs and their clients to meet WHO eligibility of a CD4 cell count of less than 500 cells per  $\mu\text{L}$  could avert 34% (95% UI 25–42) of infections and even modest coverage of sex worker-led outreach could avert 20% (95% UI 8–36) of infections in the next decade. Decriminalisation of sex work would have the greatest effect on the course of HIV epidemics across all settings, averting 33–46% of HIV infections in the next decade. Multipronged structural and community-led interventions are crucial to increase access to prevention and treatment and to promote human rights for FSWs worldwide.

---

## INTRODUCTION

Worldwide, sex workers are disproportionately affected by the HIV pandemic.<sup>1</sup> The authors of a review of HIV burden in female sex workers (FSWs) in 50 low-income and middle-income countries reported an overall HIV prevalence of 11.8% (95% CI 11.6–12.0), with a pooled odds of HIV infection of 13.5 (10.0–18.1) compared with the general population of women of reproductive age.<sup>2</sup> In many high-income countries and regions, such as Canada, the USA, and Europe, epidemics that initially escalated in people who inject drugs in the mid-1990s shifted to FSWs.<sup>3, 4</sup> In settings such as Russia and central and eastern Europe, the scarce data available suggests emerging or established epidemics among FSWs who inject drugs.<sup>5, 6</sup> Heterogeneity in HIV prevalence among FSWs varies substantially both across and within regions due to social, political, economic, and cultural factors,<sup>7</sup> yet an understanding of how structural factors (eg, contextual factors external to the individual) shape HIV acquisition and transmission risks has only just begun to emerge.

Sex workers—those who exchange sex for money—can be female, male, or transgender. Although most sex workers are female and patronised by male clients (sex buyers), sizeable populations of male and transgender sex workers are present in many settings.<sup>8, 9</sup> The work environment and community organisation of sex work varies substantially, including formal sex work establishments (eg, massage parlours, brothels, or other in-call venues (eg, hotels, lodges, and saunas), and outdoor settings (eg, streets, parks, and markets). Sex workers might solicit clients independently, both on-street and off-street (eg, self-advertisement online, in newspapers, or by phone or text), or might work for a manager or pimp. In some cases, sex workers might additionally work cooperatively in microbrothels (two or more sex workers working together).

Research and programmes in the past decade suggest that behavioural and biomedical interventions among FSWs alone have had only modest effects on the reduction of HIV at the population-level,<sup>2, 10</sup> which has led to calls for combination HIV prevention that includes structural interventions. For example, efforts to roll out antiretroviral therapy (ART) or distribute condoms to FSWs in settings where criminalisation and stigma deter access to condoms or health services continue to hamper HIV prevention, treatment, and care efforts.<sup>1, 11, 12</sup> Growing interest has arisen in structural determinants of HIV risk and ecological models that account for these risks among FSWs and other key affected

populations (eg, people who inject drugs and men who have sex with men).<sup>13, 14, 15</sup> Social epidemiology efforts in sex work have increasingly considered both structure and biology (and behaviour) within a structural determinants framework (figure 1) to better delineate the complex interplay and heterogeneity of HIV acquisition and transmission, and, more aptly, predict epidemic trajectories and intervention targets.<sup>13, 16, 17, 18</sup>

Despite efforts to consider structural HIV determinants in programmes,<sup>16</sup> social science,<sup>14, 18</sup> and epidemiological<sup>15, 17</sup> literature, the extent to which empirical work characterises the epidemiology of structural factors and HIV among FSWs worldwide, alongside behavioural and biological factors, has yet to be considered. We did a comprehensive search for recent published reports on HIV and FSWs (Jan 1, 2008, to Dec 31, 2013), and assessed the extent to which this literature regarded structural determinants in the mitigation or potentiation of HIV acquisition and transmission risk (panel 1). To further consider key structural factors from our report and available context-specific epidemiological, qualitative, and grey literature, we then modelled potential aversion of HIV infections through structural changes in three cities with high HIV prevalence among FSWs: two low-income and middle-income countries—one concentrated (India) and one generalised (Kenya) epidemic—and one high-income city with overlap with an epidemic of injecting drug use (Canada). These models allowed us to assess heterogeneity of epidemics and key structural determinants, and the potential effect of single and combined interventions (eg, structural changes) in different epidemic contexts.

## STRUCTURAL DETERMINANTS OF HIV

### Systematic review

To consider the centrality of structural determinants in HIV epidemics among FSWs, we mapped present epidemiological reports on a structural determinants framework for HIV and sex work (figure 1).<sup>19</sup> Of the 3214 relevant publications retrieved, 149 (73%) of 204 unique studies reported at least one structural determinant (table, appendix), but only 87 (43%) were designed a priori to examine one or more structural determinants of HIV, HIV and sexually transmitted infection (STI), or condom use. Of these, 81 (93%) were from low-income and middle-income countries, with most from Asia (35 from India and 13 from China), followed by Latin America and the Caribbean (14 studies). Few reports originated from heavy or increasing HIV burden settings of sub-Saharan Africa, Russia, or eastern Europe. Most studies documented associations between structural factors and condom use, rather than HIV (or HIV and STI) infection.

### Macrostructural factors

Macrostructural factors increasingly play a central part in HIV epidemic structures among FSWs and operate in iterative pathways with other structural determinants and behavioural and biological factors. An increasing number of reports show how punitive laws and policies governing sex work, including criminalisation of some or all aspects of sex work, incarceration, demolition of red-light districts (due to punitive policy changes) and legal restrictions on where sex workers operate, elevate HIV acquisition and transmission risks.<sup>23, 24</sup> Criminalisation and punitive policies on sex work have been shown to enact

stigma,<sup>25, 26</sup> increase food and economic insecurity,<sup>27, 28</sup> and residential instability (due to evictions)<sup>29</sup> among FSWs, and have been associated with inconsistent condom use. Where FSWs have constrained rights and access to resources due to their status as sex workers and women, gender-based violence<sup>26, 30</sup> and sex trafficking (forced sexual labour)<sup>28, 30, 31</sup> have been consistently linked to increased odds of HIV infection and condom non-use. By contrast, gender empowerment<sup>29</sup> and higher education and literacy<sup>29, 32</sup> continue to mitigate HIV risk among FSWs.

Migration and mobility have particularly complex and non-linear effects on HIV risk pathways among FSWs, both mitigating and conferring HIV risk. Internal domestic and circular migration and mobility (eg, intraurban or intradistrict mobility, and short-term travel to sex-work hotspots)<sup>33, 34, 35, 36</sup> have been associated with enhanced HIV vulnerability, whereas long durations of mobility and international migration from non-endemic settings have been linked to high rates of condom use<sup>37</sup> and low HIV prevalences.<sup>38</sup> The complexity of migration and HIV is characterised by other geographical features and epidemic structures (eg, immigration or emigration to higher-prevalence settings and rural vs urban migration) that might confer or mitigate HIV risk among FSWs.

### Community organisation

The role of community organisation in the reduction of HIV risk through increased condom use and lower HIV prevalence among FSWs at the population level is increasingly important. The available data for sex worker organisation is largely restricted to India,<sup>25, 39, 40, 41, 42, 43</sup> where substantial resource investments have been made in community empowerment efforts among sex workers as part of broader HIV prevention efforts. Aside from a few reports from China,<sup>32</sup> Kenya,<sup>44</sup> and Latin America,<sup>45, 46</sup> gaps in data for community empowerment up to now can be attributed in large part to scarcity of resources to assess grassroots sex worker efforts and macrostructural constraints of criminalisation and stigma that restrict the ability of FSWs to organise. Community organisation has been considered both as a broad process or intervention of community empowerment, as exemplified by Songachi and Avahan models in India,<sup>25, 39, 47</sup> or as a specific component of community organisation (eg, sex work drop-in spaces or social cohesion). For example, substantial increases in condom use (and decreased STI prevalence) were noted after the Ashodaya sex work collective intervention in Mysore, India, which combined community mobilisation, sex worker-led outreach, sex worker advocacy to police and local government, and improved sexual health services tailored to sex workers.<sup>25</sup>

### Work environment

The work environment consists of intersecting social, physical, policy, and economic features of places within which FSWs work (eg, venues, streets and public spaces, online, and other off-street self-advertising spaces).

The social features of work environments assessed in more than 100 publications are measured as both downstream products of and interactions with macrostructural factors (eg, laws and policies). Within criminalised environments, physical and sexual violence in the workplace, whether by clients, police, managers, pimps, or predators posing as clients, are

among the most ubiquitous and influential determinants of HIV acquisition and transmission risk among FSWs, linked to inconsistent condom use, client condom refusal, condom use failure and breakage,<sup>22, 24, 26, 28, 33, 43, 46, 48, 49, 50, 51, 52, 53, 54, 55, 56, 57</sup> and HIV infection.<sup>5, 33, 58, 59, 60, 61, 62</sup> In addition to police abuse as a human rights violation, law enforcement strategies and local policing of sex work, including arrests and incarceration,<sup>26, 38, 61, 63, 64, 65</sup> raids,<sup>64</sup> displacement,<sup>24</sup> and confiscation of condoms or syringes,<sup>64, 66</sup> are key barriers to HIV prevention efforts among FSWs worldwide, which reduces or eliminates the ability to negotiate male condom use<sup>24, 51, 61, 63, 64, 66</sup> and increases HIV prevalence and incidence.<sup>38, 65, 66</sup>

Physical features of the work environment (eg, venue characteristics or typology) are very context-specific and heterogeneous in structuring of HIV risk patterning in FSWs.<sup>23, 24, 34, 37, 41, 55, 57, 63, 67, 68, 69, 70, 71, 72, 73, 74, 75</sup> Few investigators have examined the nuanced and intersecting influence of policy, social, and physical features of the work environment in the mitigation or conferment of HIV risk among FSWs. The authors of these studies examined how supportive venue-based policies<sup>30, 32, 76, 77, 78, 79, 80, 81</sup> or managerial practices (eg, client sign-in, safety mechanisms, or removal of violent clients)<sup>48, 69, 76, 77, 80, 81, 82, 83, 84, 85</sup> and physical features (eg, types or layout of venues) of sex work establishments are associated with increased condom use, often through synergistic effects with other social features of increased peer or sex worker support.<sup>32, 52, 53, 69, 72, 76, 79, 81, 83, 85, 86, 87, 88, 89, 90</sup> Work environments for FSWs are shaped by economic features (eg, economic pressures, client financial incentives for non-condom use, refusal of payment, and bribes or fines by state agents [eg, police] to avoid arrest) resulting from macrostructural forces of poverty, laws, and access to resources and are associated with non-condom use<sup>27, 28, 29, 30, 40, 41, 48, 64, 70, 83, 84, 87, 91, 92, 93</sup> and HIV infection among FSWs.<sup>36, 65, 75, 94</sup> Conversely, higher income and absence of economic dependence among FSWs mitigate HIV risks, including increased condom use<sup>40, 48, 80, 86, 87</sup> and lower HIV prevalence.<sup>43, 71, 73, 74, 81, 94</sup>

Suboptimum access to safe and appropriate condoms, sexual health care, HIV testing, and ART remain major shortfalls in the fight against the worldwide HIV epidemic among FSWs. Where FSWs report adequate access to condoms, sexual health care (eg, STI testing and contraceptives) and HIV care (eg, HIV testing, ART, and sex worker-tailored clinics), increases are noted in condom use and reduced condom breakage,<sup>39, 40, 32, 44, 47, 67, 79, 95, 96, 97, 98, 99</sup> and lower HIV prevalence.<sup>100, 101</sup> Condom coverage must include condom access (eg, free or subsidised condoms at the workplace, the ability to carry condoms while working, and contact with peer condom distribution), availability and affordability, linked to reduced HIV acquisition and transmission among FSWs.<sup>25, 30, 39, 40, 44, 47, 68, 70, 79, 82, 84, 87, 93, 95, 97, 98, 99, 102, 103, 104, 105, 106, 107</sup>

## MODELLING HIV EPIDEMICS IN FEMALE SEX WORK

We assessed the population-level effect of some of the structural drivers with deterministic transmission dynamic models to simulate the course of HIV epidemics and potential HIV infections averted through structural changes in regions with concentrated and generalised

epidemics and high HIV prevalence among FSWs (appendix). Guided by our systematic review and context-specific epidemiological, qualitative, and grey literature, our modelling considers exposures to context-specific structural factors, which reflects the heterogeneity of epidemic structures in female sex work across settings. Our modelling elucidates the associations between key macrostructural factors (eg, law or policy changes), community organisation (eg, sex worker collectives or sex worker-led outreach), and intersecting social, physical, and policy features of the work environment (eg, safe vs unsafe work environments, time-varying exposure to police harassment, physical and sexual violence, and scale-up of ART coverage). These factors are associated with different partner or dyad HIV risks (eg, condom use, client condom refusal, and number of clients) and individual behavioural (eg, duration of sex work or alcohol or injection use) and biological (eg, STI co-infection rates) factors in each setting (figure 2, appendix). Our modelling, which focuses on sexual transmission, also factors in HIV infection from unsafe syringe sharing (Canada) and increased sexual risks through binge alcohol use (Kenya). We assumed that FSWs can be repeatedly exposed to violence and police harassment at rates that are specific to each setting and work environment, and that the structural factors confer or mitigate HIV risk through their potential effect on condom use in the short and long term. The model accounts for changes in coverage and ART eligibility criteria<sup>108</sup> and the documented increases in condom use over time for each setting (appendix). We explored the potential effect of scaling up of ART coverage to meet the WHO guidelines of offering ART at a CD4 cell count of less than 500 cells per  $\mu\text{L}$  for FSWs alone and for both FSWs and their clients. We calibrated the models and analysed them within a Bayesian framework with available data to define plausible uniform ranges around model parameters.<sup>109</sup> We used many sets of fitting parameters to reproduce the reported HIV prevalence in each setting to predict the effect of single and combined structural changes on the course of HIV epidemics from 2014 to 2021, through both immediate and sustained effect on condom use.

## DIVERSITY AND CONTEXT

### Case 1: Vancouver, Canada

Vancouver provides a key example of a concentrated, high-prevalence epidemic among key populations. As elsewhere in North America, the epidemic in Vancouver first emerged in men who have sex with men in the 1980s.<sup>110</sup> By the mid-1990s, an explosive HIV outbreak occurred in people who inject drugs, with HIV incidence peaking at around 18 cases per 100 person-years in 1996 and 1997,<sup>111</sup> declining to fewer than three per 100 person-years in 2007 because of substantially improved coverage of syringe distribution, other harm reduction, and ART.<sup>112</sup> The epidemic among street FSWs emerged alongside the epidemic among people who inject drugs, partly due to overlap between drug-using FSWs, clients, and non-paying partners.<sup>113, 114</sup> Because HIV incidence due to syringe sharing declined substantially, a temporal shift has occurred from illicit drug injection-acquired to sexually transmitted HIV infections in people who inject drugs and FSWs in the past 10 years.<sup>115, 116</sup> Alongside the HIV epidemic and decline of HIV within people who inject drugs, STI epidemics have continued to escalate, suggesting that sexual risks precipitate HIV transmission in key populations.<sup>116</sup> Data for non-injecting FSWs previous to 2010 are scarce. Nevertheless, modelling suggests that overall HIV prevalence in FSWs might have



peaked at around 18% in 2000 and declined to 12% in 2011 (figure 3), and that HIV transmission after 2002 seems to be due predominantly to sexual transmission and, to a lesser extent, unsafe injection practices. Many infections have been averted with increased access to the HIV care continuum (eg, HIV testing and ART) through government-sponsored treatment as prevention efforts, although suboptimal access still remains among women and other subpopulations of indigenous and migrant FSWs (Deering et al, unpublished).<sup>117</sup>

### Work environments in Canada

Patterns of HIV prevalence in FSWs are very heterogeneous by work environment exposures. In Vancouver, estimates put HIV prevalence at 20% in FSWs working in informal indoor venues (eg, bars or hotels), 12% on the street, and 3% in formal sex work establishments (eg, in-call venues).<sup>118</sup> Because work environments represent a dynamic interplay of changing structural conditions (eg, legal changes and police crackdowns), historical exposure to street-based sex work<sup>114</sup> could remain important to understand the epidemic structure among FSWs in concentrated epidemics.

Despite the criminalised nature of sex work in Canada, in-call venues have existed for a long time in the form of licensed brothels (ie, massage parlours and health enhancement centres) and microbrothels. As described by FSWs (panel 2), efforts have been made to implement new models of safer indoor work spaces within women-only, low-income housing (eg, with supportive management policies and safety measures onsite).<sup>123</sup> Longitudinal data suggests that working in formal or in-call sex work establishments reduces rates of non-condom use<sup>118</sup> and STIs<sup>124</sup> compared with street and informal indoor venues. Modelling predicts that interventions to promote access to safer work environments for FSWs could avert 37% (95% UI 16–61) of HIV infections among FSWs and their clients in Vancouver in the next decade through the combined effect on reduced violence, police harassment, and non-condom use (figure 3).

### Criminalisation, policing, and violence in Canada

Within a criminalised environment, workplace sexual violence is very prevalent and seems to have a sustained negative effect on condom use (Figure 2 and Figure 3). 30% of FSWs have experienced police harassment or workplace violence in formal indoor establishments compared with 70% in informal indoor or outdoor venues.<sup>118</sup> The elimination of future exposure to sexual violence might only have a small effect (2% [95% UI 1–4] in 10 years) in view of the sustained negative effects on condom use negotiation. However, if support and resources were in place to address both immediate and sustained effects of historical sexual violence among FSWs (eg, peer support, counselling, and housing) on non-condom use, the elimination of client sexual violence alone could avert 20% (95% UI 3–39) of HIV infections among FSWs and their clients over the next decade in Vancouver (figure 3).

As described by sex workers (panel 2), police harassment (without arrest) can directly influence HIV acquisition risk by forcing FSWs to rush transactions with their clients, forgo condoms, or engage in risky sexual practices, or by displacement of FSWs to isolated or hidden venues, where they have less ability to control transactions (eg, client selection, types



of sexual acts, or condom use).<sup>120</sup> Police harassment without arrest (eg, raids, forced detainment, or coercion) is very prevalent in Vancouver—62% of FSWs report ever experiencing police harassment in their lifetimes and 40% do so within the past 6 months. Recent exposure to police harassment is estimated to increase the rate of client violence by 1.0–5.2 times<sup>125</sup> due to reduced ability to screen clients and displacement to more isolated and hidden venues, thereby increasing FSWs' risk of HIV acquisition (figure 2). Police harassment and physical violence alone have an immediate and transient effect on the reduction of condom use after a recent exposure to the violence, whereas sexual violence seems to negatively affect condom use in the short and long term (figure 2). Because of the dynamic and iterative effects of violence and policing, the independent addressing of police harassment or physical violence alone would have a negligible effect. However, elimination of both police harassment and sexual and physical violence coupled with support to address long-term effects of violence could avert 24% (95% UI 8–45) of HIV infections among FSWs and their clients in Vancouver in the next decade (figure 3) through its direct and sustained effect on condom use.

In Canada, a Supreme Court decision to strike down criminal laws targeting sex work has allowed the government to potentially decriminalise sex work by the end of 2014, providing a unique opportunity to model the potential effect of law reforms on the HIV epidemic. Our modelling suggests that nearly 39% (95% UI 16–63) of infections could be averted among FSWs and their clients in the next decade by decriminalisation of sex work (figure 3) through immediate and sustained effects on violence, police harassment, and safe work environments, and associated condom use. These predictions represent the maximum effect that interventions reducing violence or police harassment or legislation can have because the complete elimination of violence or stigma could be challenging.

### Case 2: Mombasa, Kenya

Kenya has a generalised epidemic of HIV, with prevalence remaining about 6–7% since 2007.<sup>126</sup> FSWs have the highest HIV burden in Kenya, with an explosive HIV epidemic emerging in the 1980s among FSWs, peaking at 80% in 1983.<sup>127</sup> HIV incidence declined substantially after the scale-up of HIV prevention and treatment for FSWs in Nairobi from an estimated 18 cases per 100 person-years in 1985 to fewer than five cases per 100 person-years in 2005.<sup>127</sup> Estimates suggest that 29.3–47.0% of all Kenyan FSWs are living with HIV.<sup>44, 127, 128</sup> Continued high HIV burden among FSWs and absence of sustained coverage of HIV prevention and care services tailored to FSWs is largely attributed to a dearth of strategies to mitigate structural determinants of HIV (eg, stigma, discrimination, violence, and criminalisation).<sup>128</sup>

Mombasa is an economic centre of Kenya's Coast Province, with important tourism, port, rail, and industrial enterprises serving as a client base, and a large FSW population (appendix). An estimated 6% of the female population in Mombasa engaged in sex work in the past 12 months.<sup>44</sup> Modelling results show that with increased condom use, HIV prevalence (and incidence) among Mombasa FSWs declined from roughly 50% (18 cases per 100 person-years) in the mid-1990s to less than 30% (fewer than five cases per 100 person-years) in 2010–15 (figure 4).<sup>44, 129</sup>

Since 2006, ART has been provided to individuals with HIV for free in Kenya. Despite high coverage in the general Kenyan population (estimated at 83% of ART-eligible people in 2011; ie, roughly 40% of all HIV-positive people),<sup>126</sup> about 20–30% of all HIV-positive FSWs were reportedly receiving ART based on a CD4 cell count of less than 200 cells per  $\mu\text{L}$ .<sup>130</sup> Once on ART, much the same rates of retention and virological suppression were reported among FSWs compared with the general population of women, highlighting existing gaps in HIV testing and access to and initiation of ART. As described by sex workers (panel 2), denial of health care access, including ART refusal, is a major structural barrier to HIV prevention and care among FSWs in Kenya, as elsewhere in East Africa, and is associated with heavy criminalisation, stigma, and violence.<sup>12</sup> Scale-up of ART access to meet WHO guidelines of a CD4 cell count of less than 500 cells per  $\mu\text{L}$  for FSWs would have substantial effect (appendix), with the largest gains on the epidemic seen in ART scale-up for both FSWs and their clients, averting 34% (95% UI 25–42) of HIV infections over the next decade (figure 4), although evidence suggests that removal of structural barriers, including law reform and stigma, remain crucial.<sup>1, 12</sup> In addition to the critical need for ART access for FSWs, the ART prevention capacity, particularly in generalised epidemics, of infection avoidance among FSWs by enhanced ART coverage for clients remains pivotal.

### **Criminalisation and client, police, and stranger sexual violence in Kenya**

Sex work is criminalised by both national laws and municipal bylaws in Kenya, with sex worker arrests for loitering for the purpose of selling sex, importuning, and indecent exposure, rather than for clients. Kenyan sex workers describe similar experiences to Vancouver—of how criminalisation compromises HIV prevention by rushed transactions due to fear of arrest, bribes, extortion, sexual coercion, and the forgoing of condoms, and the deterrence of sex workers from reporting violence to authorities (panel 2).<sup>122</sup>

Sexual violence against FSWs by police, clients, or strangers is endemic in Kenya, with estimates in Mombasa ranging from 29% to 32% in 2007.<sup>129</sup> Sexual violence is precipitated by macrostructural determinants, including stigma, criminalisation, and gendered cultural norms (panel 2).<sup>44, 129</sup> Modelling suggests that elimination of sexual violence could avert 17% (95% UI 1–31) of HIV infections among FSWs and their clients over the next 10 years, coupled with support to address long-term effects of historical sexual violence, due to its immediate and sustained effect on non-condom use (figure 4, appendix).

### **Work environments in Kenya**

Sex work in Mombasa is most common within entertainment establishments (72% in bars or nightclubs), followed by homes (21%) and the street (7%).<sup>44</sup> Sparse data exists for features of the work environment, although binge alcohol use is widespread in bars and associated with a reduced ability among FSWs to negotiate client condom use and condom breakage, heightened sexual violence, and HIV infection.<sup>129</sup> Substance use in the coastal province is common, with 33% of FSWs estimated to binge drink and most (80%) reporting exchanging sex while intoxicated, with increasing use of khat (77%; amphetamine derivatives), heroin, cocaine, and glue (6%).<sup>129, 131</sup> No data for client substance use patterns exist, although estimates among the general male population in Mombasa are similar to that of FSWs.<sup>129, 131</sup> Nightclub-based FSWs (who report the most binge drinking) are younger,

earn more, and use condoms the most compared with bar or lodge-based FSWs, who charge less and use condoms less frequently, showing the influence of social and physical features of bar venues.<sup>129</sup> Modelling suggests that 21% (95% UI 5–35) of HIV infections of FSWs and their clients could be averted through safer work environments over 10 years (figure 4) through combined elimination of increased sexual violence and non-condom use risks associated with binge drinking. Interventions that moderate the work environment (eg, supportive management and venue-based policies, and peer harm reduction) remain pivotal.

### Peer and sex worker-led interventions in Kenya

Mapping estimates suggest that large gaps exist in condom access for FSWs, with an estimated 25% of bars with condom dispensers and 29% accessed by peer outreach.<sup>105, 132</sup> Sex worker-led outreach can promote consistent condom use directly through enhanced condom coverage in venues and indirectly through peer education around condom negotiation with clients and shifting sex industry norms on condom use.<sup>32, 69, 72, 76, 79, 81, 83, 85, 86, 87, 88, 89, 90</sup> Sex worker-led interventions are a key component of community empowerment, as shown in several low-income and middle-income countries. In Mombasa, peer or sex worker-led outreach implemented between 2000 and 2005 was associated with a more than three-fold increase in consistent condom use,<sup>44</sup> although coverage was less than 30%. Human rights violations and harassment of outreach workers have been reported in Mombasa, which could deter scale up in the absence of structural change (panel 2).<sup>119</sup> Scaling up of sex worker-led outreach to even modest coverage could prevent 20% (95% UI 8–36) of HIV infections in the next 10 years (figure 4). Combined structural changes to decriminalise sex work could avert 33% (95% UI 13–53) of HIV infections among FSWs and their clients over the next 10 years through a combined effect on sexual violence, safer work environments, and increased condom use (figure 4).

### Case 3: Bellary, India

South India is experiencing a predominately heterosexual HIV epidemic among FSWs.<sup>133</sup> Although national adult HIV prevalence is less than 1%, India has the largest burden of HIV after South Africa and Nigeria, with an estimated 2.5 million people living with HIV. In the past decade, India has seen substantial progress in the curbing of HIV prevalence among FSWs, although substantial heterogeneity exists. FSWs remain 54-times more likely to be infected with HIV over their lifetime compared with the general population of women of reproductive age.<sup>2</sup>

In response to a growing HIV epidemic among FSWs in 2003 in Karnataka and other high-prevalence states, the Bill & Melinda Gates's Avahan, Indian AIDS initiative rapidly scaled up HIV prevention efforts. By 2008, more than 75% of the estimated target population (217 000 FSWs) in the 69 Avahan districts across four southern states were being contacted monthly.<sup>134</sup>

Karnataka (population ~54 million) ranks in the top four Indian states for HIV epidemic severity. Bellary, a high-prevalence district (overall HIV prevalence of 1.2% in 2011) in central Karnataka has a predominately urban epidemic (population of Bellary ~2 million), concentrated among FSWs and men who have sex with men.<sup>96</sup> Work environments vary

substantially between districts, with home or independent-based and street-based sex work, and to a lesser extent, brothel-based work, with an increased use of phone or text communications and mobility.<sup>49</sup> As in Mombasa, industries (mining and chalking) in urban Bellary provide a large client base. Avahan was initiated in Bellary in 2004 and substantial progress has been made (a reduction in HIV prevalence from 15.7% in 2005 to 6.4% in 2011; figure 5).<sup>71</sup>

Alongside Avahan, a slower rollout of ART across India began in 2004, with eligibility criteria shifting from a CD4 cell count of up to 250–350 cells per  $\mu\text{L}$  in 2012 to meet international guidelines.<sup>135</sup> By 2012, 19% of the 2.3 million adults with HIV in India were estimated to be on ART, with much variability in coverage.<sup>136</sup> However, because referral for semi-annual HIV screening among FSWs is a key component of India's targeted intervention programme,<sup>137</sup> HIV screening among FSWs is higher than it is for the overall population, although linkage to and retention of ART could be lower.<sup>137</sup>

### **Criminalisation, violence, and policing in India**

Although buying or selling of sex is not illegal in India, the Indian Immoral Traffic Prevention Act, enacted in 1956, criminalises most aspects of sex work, including solicitation and living off the avails by third parties. Violence is common, although in Karnataka, structural and sex worker-led interventions (policy level, police or stakeholder engagement, and training) have reduced violence against FSWs.<sup>22, 25</sup> Prevalence of recent client physical and sexual violence in Bellary reduced from 35% to 9% between 2006 and 2008.<sup>22, 33</sup> Elimination of sexual and physical violence could avert a further 5% (95% UI 2–14) of HIV infections among FSWs and their clients over the next 10 years through its immediate effect on condom use (figure 5). Fear of condom confiscation due to recent arrest or intimidation is common and associated with a transient increased risk of non-condom use.<sup>7, 119</sup> Based on the large-scale reductions in violence already reported because of structural and sex worker-led efforts, elimination of both police condom confiscation and physical and sexual violence through their immediate and sustained effect on condom use could avert 6% (95% UI 2–15) of HIV infections among FSWs and their clients over the next decade (figure 5). However, decriminalisation of sex work would have the largest effect: it would avert 46% (95% UI 33–56) of HIV infections among FSWs and their clients over the next decade (figure 5) through its immediate and sustained effect on violence, policing, and safer work environments.

### **Community empowerment in India**

After the Sonagachi model in Kolkata,<sup>138</sup> the Avahan intervention in Karnataka and other states included structural and community empowerment components to address both macrostructural (eg, stigma) and work environment (eg, violence) determinants of HIV. Ashodaya, the first of the Avahan interventions, is now regarded as best practice.<sup>25, 121</sup> Avahan assessments suggest that the combined multicomponent structural and community empowerment intervention could have averted 33–62% of all infections in FSWs and 39–66% of all infections in clients within 5 years in Bellary<sup>97</sup> through membership in sex work collectives, access to STI clinics and peer-led outreach, 24 h crisis lines and drop-in centres, and sex worker advocacy efforts directed towards local government and police (table).<sup>21</sup>

## POLICY AND PREVENTION IMPLICATIONS

In our report, fewer than half the recent epidemiological studies on HIV acquisition and transmission risk among FSWs explicitly considered structural determinants, yet the literature underscores the centrality of structural determinants for this component of the worldwide HIV epidemic. Because sub-Saharan Africa has a substantial portion of the HIV epidemic among FSWs, and Russia and eastern Europe have growing (and in some cases rapidly expanding) HIV epidemics among FSWs, gaps in data for individual and structural determinants of HIV in these regions is concerning.

Our findings show the challenges in the prevention of HIV infections through structural factors that interact in many dynamic pathways (Figure 1, Figure 2 and Figure 4). Science needs to move beyond binary and linear models to more complex, multilevel, and multimethod approaches that consider theoretical and structural contributions to HIV risk—alongside interpersonal, behavioural, and biological contributions—among FSWs to inform HIV prevention. Dialogue across social science and epidemiological research is needed. Several macrostructural features, including stigma,<sup>25, 26</sup> mobility, and migration<sup>33, 34, 35, 36, 54, 68, 72, 139</sup> are difficult to measure and require complex and dynamic methods to better delineate their role in the conferring or potentiating of HIV risk.

In two settings with severe epidemics of sexual violence (Canada and Kenya), the reduction or elimination of sexual violence and its short-term and long-term negative results could substantially avert HIV infections in the next 10 years. In Mombasa, sexual violence by clients, police, and strangers affected a third of FSWs, suggesting a crucial need for structural changes at the macro level (eg, laws, policies, and stigma) and in the work environments they engender. Safe work environments need to be promoted, with supportive managerial practices and venue-based policies shown to reduce inconsistent condom use and HIV incidence,<sup>30, 76, 77, 78, 79, 80</sup> including harm reduction policies to reduce alcohol binge use within entertainment establishments.<sup>69</sup>

In Vancouver, which has piloted some innovative venue-based models of safe work environments with supportive management policies and practices,<sup>123</sup> full access to safer work environments could avert up to 37% of HIV infections among FSWs and their clients (figure 3), although scale-up and coverage is probably only feasible alongside macropolicy support. Furthermore, researchers have shown that even in criminalised contexts, FSWs' engagement of police and other stakeholders (eg, managers, business owners, or government officials) can change work environments by the reduction or elimination of stigma, violence, and police harassment, and increase engagement in care.<sup>22, 25, 49</sup>

Across both concentrated (India and Canada) and generalised (Kenya) epidemics, decriminalisation of sex work could have the largest effect on the course of the HIV epidemics, averting 33–46% of HIV infections over the next decade. Calls for removal of all legal restrictions targeting sex work have been supported by international policy bodies, including WHO, UNAIDS, UNDP, and the UN Population Fund,<sup>1</sup> and a recent unanimous decision by the Supreme Court of Canada. Ultimately, evidence must drive government responses in law and policy revisions to ensure the health and human rights of sex workers.

In India, where the effect of structural interventions and community empowerment efforts (eg, Avahan) on the HIV epidemic has been well documented, further sex worker collectivisation could avert 6% (95% UI 4–14) of new infections in FSWs and their clients within 10 years (figure 5). Although this gain is modest, 25–35% of HIV infections have already been averted through combined structural and community empowerment efforts over the course of Avahan.<sup>97</sup> By contrast, in Kenya, where structural constraints (eg, criminalisation, stigma, and gender inequities) have restricted the ability of FSWs to organise,<sup>44, 119, 122</sup> even modest coverage of sex worker-led outreach could avert 20% (95% UI 8–36) of HIV infections in the next decade (figure 4).

Our review and modelling underscore the need for multicomponent and multipronged HIV prevention efforts that promote structural changes to ensure improved access to HIV prevention, treatment, and care. Based on the well-established role of ART for prevention, modelling data suggest that scale-up of ART coverage to meet WHO guidelines of a CD4 cell count of less than 500 cells per  $\mu\text{L}$  can make substantial gains in the reduction of morbidity and mortality, and a population-level effect on acquisition and transmission for FSWs and their clients. The largest gains are to be had in generalised epidemic settings; in Mombasa, Kenya, ART coverage for both clients and FSWs could avert 34% of infections in the next decade (figure 4). The full effect of ART scale-up will probably only be possible alongside structural changes to address macrodeterminants, community organisation, and work environment factors that influence FSWs' abilities to engage in the HIV continuum of care (eg, voluntary testing and linkage to and retention of care).

Similarly, we noted that condom access (not just coverage) is a key issue, including availability of free or subsidised condoms in the workplace, the ability to carry condoms, and access to sex worker outreach distribution.<sup>25, 30, 39, 40, 44, 47, 68, 70, 79, 82, 84, 87, 93, 95, 97, 98, 99, 102, 103, 104, 105, 106, 107</sup> In Kenya, where condoms are available in less than a third of bars and lodges,<sup>105</sup> sex worker-led outreach models are critical, alongside supportive venue-based policies on and practices in condom use.

Finally, because little research has assessed HIV epidemic responses and the potentially substantial role of addressing HIV among FSWs and their clients (and other key populations) in generalised HIV in sub-Saharan Africa, our findings support the role of structural responses to sex work in the alteration of the course of HIV epidemics.

## CONCLUSION

Macrostructural changes are urgently needed to laws and policies (eg, decriminalisation of sex work) and the work environment features (eg, reductions to policing and violence and safer work environments) they engender in order to stem HIV epidemics among FSWs and their clients across diverse epidemic settings. Coverage and equitable access to condoms, ART, and HIV prevention, treatment, and care lag unacceptably behind that of the general population. To generate substantial change among FSWs, scale-up needs to coincide with structural changes, sex worker-led interventions, and engagement through community empowerment. Further data for the many dynamic feedback loops between macrostructural, community organisation-related, and intersecting physical, social, economic, and policy



features of work environments within the sex industry are very context specific and necessary to inform policy and programmatic changes. Our findings confirm calls for multipronged structural and community-led interventions, alongside biomedical interventions, that substantially reduce HIV burden and promote human rights for sex workers worldwide.<sup>1</sup>

## **PANEL 1. SYSTEMATIC REVIEW AND MODELLING: MEASUREMENT OF STRUCTURAL DETERMINANTS OF HIV**

### **Systematic review and modelling**

The role that structural determinants have in HIV epidemics and access to care for female sex workers (FSWs) is poorly understood. We aimed to review available published data for HIV prevalence and incidence, condom use, and structural determinants among this group through a systematic search of published sources. We extracted details regarding study information (year, setting, study dates, and participants); study design (sample size, geographical location, type of study [longitudinal or cross-sectional], and whether pathways were explored through interaction or stratified analyses); specific outcomes of interest (HIV infection, HIV or sexually transmitted disease infection, or condom use); individual behavioural or biological partner or dyad factors, or structural factors (risks or protective). We recorded whether or not each study had aimed, a priori, to measure and analyse structural determinants of HIV. We then modelled key structural drivers from the systematic review to assess the population-level effect of structural changes using deterministic transmission dynamic models to simulate the course of HIV epidemics and potential HIV infections averted in regions with concentrated and generalised epidemics, and high HIV prevalence among FSWs (Canada, Kenya, and India). Full details of the search and modelling are presented in the appendix.

### **Structural determinants**

To identify structural determinants, we mapped present epidemiological reports on a structural determinants framework for HIV and sex work<sup>19</sup> (figure 1, table), and drew on earlier work by Diez Roux and Aiello<sup>17</sup>, Blanchard and Aral<sup>16</sup>, Rhodes and colleagues<sup>18</sup>, Overs<sup>20</sup>, Strathdee<sup>13</sup>, and others. Structural determinants (risk or protective factors) operate at macrostructural (eg, social, economic, and health-related policies governing sex work; mobility and migration of sex workers and their clients; geography and sociopolitical transitions; and stigma and cultural norms), community organisation (eg, community empowerment, sex work collectivisation, or leadership), and work environment (eg, physical, social, policy, and economic features, such as venue-based policies, violence, policing, and managerial practices) levels. These various structural determinants can act iteratively and dynamically with interpersonal (eg, partner or dyad factors, such as condom use, types of sexual exchanges, and sexual networks), individual behavioural (eg, drug use or duration in sex work), and biological (eg, sexually transmitted disease co-infection) factors to confer or mitigate HIV acquisition and transmission risk among FSWs.



### Inclusion and exclusion criteria

We included studies that examine multivariate risk or mitigating factors for HIV infection (or HIV or sexually transmitted infections) or (male) condom use among FSWs. We excluded studies that focused solely on adolescent (<18 years), transgender, or male sex workers, or transactional sex (exchange of sex for non-monetary goods). We excluded qualitative studies, non-primary research (eg, reviews, modelling studies, and commentaries), studies in which HIV infection, HIV or sexually transmitted infection, or condom use were not analysed as individual outcomes, studies that did not report multivariate analyses of the outcome, and those that did not report stratified results among FSWs.

### Epidemiological data gaps, biases, and contexts

Our systematic review of available epidemiological literature (appendix) does not account for the vast empirical and theoretical social science and grey literature on factors that mitigate or potentiate epidemics among FSWs. Structural determinants that have not been well operationalised, such as stigma, support the increasing need for dialogue between epidemiologists, social scientists, and the community to ensure the diversity of the sex industry and FSWs' lived experiences are shown. Despite efforts to review non-English language reports in Russia, China, Kenya, and India, other countries are not represented here.

Both the available evidence and our modelling of key structural factors identified elucidate the heterogeneous nature of epidemics among FSWs, including the dynamic interplay of structural, behavioural, and biomedical factors that are context specific and modified by variations in epidemic structure (eg, concentrated or generalised; Figure 1 and Figure 2). As such, scarce or unavailable data (including longitudinal, qualitative, and grey literature) on key structural determinants parameters (eg, policing exposures in Kenya and India) and their evolution over time hindered our ability to consider some key contextual elements in the modelling of epidemic trajectories, which led to a potential underestimation of their effect on HIV risk structuring among FSWs. Of particular importance is the concerning dearth of epidemiological, qualitative, and grey literature on structural determinants of HIV among FSWs in high-burden countries of sub-Saharan Africa, given that this region has a substantial portion of the epidemic among FSWs worldwide. In addition, most of the available data are drawn from cross-sectional studies. In our modelling analysis, we show many different influences of structural determinants through recurrent dynamic stages and we highlight the gaps in epidemiological data on non-linear, dynamic, and iterative HIV transmission pathways, and the need for more complex, multilevel, and mixed methods studies. For example, data for Vancouver show that to tackle only one form of violence is probably insufficient to curb HIV acquisition and transmission risk, supporting the need for combined structural HIV interventions to both support FSWs' rights and ensure access to biomedical interventions for prevention, treatment, and care. Of note, our findings might overestimate the effect of structural interventions because we provided estimates of HIV infections averted if the longer-term excess risk associated with non-condom use was wholly eliminated immediately after implementation. In reality, a reduction in structural determinants (eg, violence or police harassment) and an increased ability of FSWs to

negotiate condom use, for example, might occur slowly. In some instances, community empowerment might lead to a transient period of increased violence by clients or regular partners,<sup>21, 22</sup> which would reduce short-term intervention effect. Access, not just coverage, remains crucial for prevention and treatment; however, our modelling of antiretroviral therapy coverage does not take into account potential structural barriers to access to treatment, such as stigma.

## **PANEL 2. FEMALE SEX WORKERS' VOICES FROM KENYA, INDIA, AND CANADA: STRUCTURAL DETERMINANTS AND HIV**

### **Direct and indirect effects of policing**

#### **Kenya**

- “It was June, they [the police] found me on the street, took all my condoms I had and destroyed them”<sup>119</sup>
- “It happened last week. The City Council Police told me I was dirtying the town with condoms and took all my condoms”
- “Sex workers fear harassment and intimidation by police, so they do not carry condoms” (peer outreach worker)<sup>119</sup>

#### **Canada (Vancouver)**

- “You know, you get all these asshole cops and security kicking us off... pushing us into darker and darker areas, you know. That has got to stop... and down here... they'll [the police] pick you up... and make you do something for them just so you can stay there to work. And that's more or less their turf...”<sup>120</sup>
- “We still have to hide any condoms we have onsite in case the police find them”

### **Violence by clients, police, strangers, intimate partners, and third parties**

#### **India (Karnataka)**

- “My good friend used to come to the [sex work drop-in centre]... her boyfriend drinks alcohol and she was murdered by [him and his friends]. They put stones in her mouth, but she was not dead. Then they put rope around her neck and petrol on her and burned her and she is dead.”<sup>121</sup>
- “He [a goonda (or hired thug)] put handcuffs on me and told me I had to go to the police station, but he took me to a remote place instead. 12 members had sex with me and snatched my money and purse. I have bite marks on my chest [lifts sari to show marks].”<sup>121</sup>

#### **Canada (Vancouver)**

- “The goal is the same [working on high track versus skid row]. So whether you get out of there alive, the violence doesn't matter.”<sup>120</sup>
- “I hear about so many women who have been infected with HIV during a bad date or been raped or molested...and these people, they get away with it.”<sup>120</sup>

### Kenya (Mombasa)

- “A client may have skin sores all over the body and you only notice when he undresses and because of fear [of HIV or sexually transmitted infections] you mention it, but instead he beats you up and forces himself on you.”<sup>122</sup>

### Stigma and denial of health services and antiretroviral therapy

#### Kenya (Mombasa)

- “When I fell sick and went to a health centre and they realised that I was a sex worker, they did not treat me like a human being... I was told that he had no time for me. So I left without getting treatment.”
- “They [sex workers] fear that if tested positive they will be mistreated.”<sup>12</sup>

### Safer work environments (with supportive management and venue policies, and sex worker and peer support)

#### India (Karnataka)

- “I hear and see mistreatment of sex workers by clients but I will throw them [violent clients] out of the lodge. I call the police patrol too, the mobile jeep, and get the client [out of there].”<sup>121</sup>

#### Canada (Vancouver)

- “[When violence happens onsite]...the staff have come and they've told him to leave, or they even got the police to get him to leave. They do that right away. It took four cops to get this guy to leave. Then they barred him [from the venue].”<sup>123</sup>
- “All I have to do is yell, and every girl in my building will be there, right? The guy gets scared and leaves. 16 girls show up at your door, banging on your door. He's gonna go, right? People are remembered there too, right?”<sup>123</sup>

### Search strategy and selection criteria

We searched PubMed, EMBASE, Science Citation Index, BIOSIS Previews, PsycINFO, CINAHL, Social Sciences Citation Index, Sociological Abstracts, and CAB Direct (CAB Abstracts & Global Health) for peer reviewed reports published in any language from Jan 1, 2008, to Dec 31, 2013, assessing determinants of HIV infection or incidence, or condom use among female sex workers. The search terms used were “Sex work\*” OR “sex worker” OR prostitute\* OR prostitut\* OR “prostitution” OR “commercial sex worker\*” OR “sex workers” for sex work, “risk factor” OR “risk factors” OR correlate\* OR determinant\* OR predictor\* OR risk\* for risk or protective correlates, “Condom use” OR “non-condom use” OR “condom non-use” OR “unprotected sex” OR “condom refusal” OR condom\* OR “condom negotiation” OR “condoms utilization” OR “condoms utilisation” OR “condoms/ utilization” OR “condoms/utilization” for condom use, HIV\* OR “human immunodeficiency virus” OR “HIV infections” OR AIDS\* OR “acquired immunodeficiency syndrome” OR “acquired immune deficiency syndrome” OR HIV/AIDS\* for HIV. SMG and PD did initial screening and eight reviewers (SMG, PD, PM, SR-P, MR, JL, SAS, and KS) extracted data from relevant reports.

## Acknowledgments

This Review was partly supported by the US National Institutes of Health (R01DA028648, R01DA033147), the Bill & Melinda Gates Foundation, and the United Nations Population Fund. KS is partially supported by a Canada Research Chair in Global Sexual Health and HIV/AIDS. SAS is partially supported by a NIDA merit award (R37 DA019829). For assistance with the report, we thank Jinghua Li, Nancy Stimson, Ursula Ellis, and Katherine Miller.

## REFERENCES

1. WHO Guidelines: prevention and treatment of HIV and other sexually transmitted infections for sex workers in low- and middle-income countries. World Health Organization; Geneva: 2012.
2. Baral S, Beyrer C, Muessig K, et al. Burden of HIV among female sex workers in low-income and middle-income countries: a systematic review and meta-analysis. *Lancet Infect Dis*. 2012; 12:538–49. [PubMed: 22424777]
3. Strathdee SA, Sherman SG. The role of sexual transmission of HIV infection among injection and non-injection drug users. *J Urban Health*. 2003; 80(4 suppl 3):iii7–14. [PubMed: 14713667]
4. Kral AH, Bluthenthal RN, Lorvick J, Gee L, Bacchetti P, Edlin BR. Sexual transmission of HIV-1 among injection drug users in San Francisco, USA: risk-factor analysis. *Lancet*. 2001; 357:1397–401. [PubMed: 11356437]
5. Decker MR, Wirtz AL, Baral SD. Injection drug use, sexual risk, violence and STI/HIV among Moscow female sex workers. *Sex Transm Infect*. 2012; 88:278–83. [PubMed: 22287530]
6. Uusküla A, Fischer K, Raudne R. A study on HIV and hepatitis C virus among commercial sex workers in Tallinn. *Sex Transm Infect*. 2008; 84:189–91. [PubMed: 18256109]
7. Shannon K, Csete J. Violence, condom negotiation, and HIV/STI risk among sex workers. *JAMA*. 2010; 304:573–74. [PubMed: 20682941]
8. Baral, SD.; Friedman, MR.; Geibel, S., et al. Male sex workers: practices, contexts, and vulnerabilities for HIV acquisition and transmission. *Lancet*. 2014. published online July 22. [http://dx.doi.org/10.1016/S0140-6736\(14\)60801-1](http://dx.doi.org/10.1016/S0140-6736(14)60801-1)
9. Poteat, T.; Wirtz, AL.; Radix, A., et al. HIV risk and preventive interventions in transgender women sex workers. *Lancet*. 2014. published online July 22. [http://dx.doi.org/10.1016/S0140-6736\(14\)60833-3](http://dx.doi.org/10.1016/S0140-6736(14)60833-3)
10. Shahmanesh M, Patel V, Mabey D, Cowan F. Effectiveness of interventions for the prevention of HIV and other sexually transmitted infections in female sex workers in resource poor setting: a systematic review. *Trop Med Int Health*. 2008; 13:659–79. [PubMed: 18266784]
11. Shannon K, Montaner JS. The politics and policies of HIV prevention in sex work. *Lancet Infect Dis*. 2012; 12:500–02. [PubMed: 22424776]
12. Scorgie F, Nakato D, Harper E, et al. ‘We are despised in the hospitals’: sex workers’ experiences of accessing health care in four African countries. *Cult Health Sex*. 2013; 15:450–65. [PubMed: 23414116]
13. Strathdee SA, Hallett TB, Bobrova N, et al. HIV and risk environment for injecting drug users: the past, present, and future. *Lancet*. 2012; 376:268–84. [PubMed: 20650523]
14. Rhodes T. The risk environment: a framework for understanding and reducing drug-related harm. *Int J Drug Policy*. 2002; 13:8594.
15. Blankenship KM, Bray S, Merson MH. Structural interventions in public health. *AIDS*. 2000; 14(suppl A):S11–21. [PubMed: 10981470]
16. Blanchard JF, Aral SO. Emergent properties and structural patterns in sexually transmitted infection and HIV research. *Sex Transm Infect*. 2010; 85(suppl 3):iii4–9. [PubMed: 21098056]
17. Diez Roux AV, Aiello AE. Multilevel analysis of infectious diseases. *J Infect Dis*. 2005; 191(suppl 1):S25–33. [PubMed: 15627228]
18. Rhodes, T.; Wagner, K.; Strathdee, SA.; Shannon, K.; Davidson, P.; Bourgois, P. Structural violence and structural vulnerability within the Risk Environment: Theoretical and Methodological Perspectives for a Social Epidemiology of HIV Risk among IDU and SW. In: O’Campo, P.; Dunn,

- JR., editors. Rethinking social epidemiology: towards a science of change. University of Toronto Press; Toronto: 2012.
19. Shannon K, Goldenberg G, Deering K, Strathdee SA. HIV infection among female sex workers in concentrated and high prevalence epidemics: why a structural determinants framework is needed. *Curr Opin HIV AIDS*. 2014; 9:174–82. [PubMed: 24464089]
  20. Overs, C. An analysis of HIV prevention programming to prevent HIV transmission during commercial sex in developing countries. WHO; Geneva: 2002. Sex workers: part of the solution.
  21. Reza-Paul S, Lorway R, O'Brien N, et al. Sex worker-led structural interventions in India: a case study on addressing violence in HIV prevention through the Ashodaya Samithi collective in Mysore. *India J Med Res*. 2012; 135:98–106.
  22. Beattie TS, Bhattacharjee P, Ramesh BM, et al. Violence against female sex workers in Karnataka state, south India: impact on health, and reductions in violence following an intervention program. *BMC Public Health*. 2010; 10:476. [PubMed: 20701791]
  23. Shahmanesh M, Wayal S, Copas A, Patel V, Mabey D, Cowan F. A study comparing sexually transmitted infections and HIV among ex-Red-Light District and non-Red-Light District sex workers after the demolition of Baina Red-Light District. *JAIDS*. 2009; 52:253–57. [PubMed: 19525855]
  24. Shannon K, Strathdee SA, Shoveller J, Rusch M, Kerr T, Tyndall MW. Structural and environmental barriers to condom use negotiation with clients among female sex workers: implications for HIV-prevention strategies and policy. *Am J Public Health*. 2009; 99:659–65. [PubMed: 19197086]
  25. Reza-Paul S, Beattie T, Syed HU, et al. Declines in risk behaviour and sexually transmitted infection prevalence following a community-led HIV preventive intervention among female sex workers in Mysore, India. *AIDS*. 2008; 22(suppl 5):S91–100. [PubMed: 19098483]
  26. Pando MA, Coloccini RS, Reynaga E, et al. Violence as a barrier for HIV prevention among female sex workers in Argentina. *PLoS One*. 2013; 8:e54147. [PubMed: 23342092]
  27. Reed E, Silverman JG, Stein B, et al. Motherhood and HIV risk among female sex workers in Andhra Pradesh, India: the need to consider women's life contexts. *AIDS Behav*. 2013; 17:543–50. [PubMed: 22782790]
  28. Saggurti N, Verma RK, Halli SS, et al. Motivations for entry into sex work and HIV risk among mobile female sex workers in India. *J Biosoc Sci*. 2011; 43:535–54. [PubMed: 21729360]
  29. Reed E, Gupta J, Biradavolu M, Devireddy V, Blankenship KM. The role of housing in determining HIV risk among female sex workers in Andhra Pradesh, India: considering women's life contexts. *Soc Sci Med*. 2011; 72:710–16. [PubMed: 21306811]
  30. Urada LA, Morisky DE, Pimentel-Simbulan N, Silverman JG, Strathdee SA. Condom negotiations among female sex workers in the Philippines: environmental influences. *PLoS One*. 2012; 7:e33282. [PubMed: 22448241]
  31. Decker MR, McCauley HL, Phuengsamran D, Janyam S, Silverman JG. Sex trafficking, sexual risk, sexually transmitted infection and reproductive health among female sex workers in Thailand. *J Epidemiol Community Health*. 2011; 65:334–39. [PubMed: 20515895]
  32. Kang DM, Tao XR, Liao MZ, et al. An integrated individual, community, and structural intervention to reduce HIV/STI risks among female sex workers in China. *BMC Public Health*. 2013; 13:717. [PubMed: 23914824]
  33. Ramesh S, Ganju D, Mahapatra B, Mishra RM, Saggurti N. Relationship between mobility, violence and HIV/STI among female sex workers in Andhra Pradesh, India. *BMC Public Health*. 2012; 12:764. [PubMed: 22967276]
  34. Sobela F, Pepin J, Gbeleou S, et al. A tale of two countries: HIV among core groups in Togo. *J Acquir Immune Defic Syndr*. 2009; 51:216–23. [PubMed: 19339896]
  35. Decker MR, Wirtz AL, Baral SD, et al. Injection drug use, sexual risk, violence and STI/HIV among Moscow female sex workers. *Sex Transm Infect*. 2012; 88:278–83. [PubMed: 22287530]
  36. Gaines T, Rusch M, Brouwer K, et al. The Effect of geography on HIV and sexually transmitted infections in Tijuana's red light district. *J Urban Health*. 2013; 90:915–20. [PubMed: 22689301]
  37. Hao X, Wang W. Sentinel surveillance of HIV/AIDS in female sex workers in Kecheng district of Quzhou city, Zhejiang province, 2011. *Dis Surveill*. 2012; 27:300–03.

38. Goldenberg SM, Chettiar J, Simo A, et al. Early sex work initiation independently elevates odds of HIV infection and police arrest among adult sex workers in a Canadian setting. *J Acquir Immune Defic Syndr*. 2014; 65:122–28.
39. Deering KN, Boily MC, Lowndes CM, et al. A dose-response relationship between exposure to a large-scale HIV preventive intervention and consistent condom use with different sexual partners of female sex workers in southern India. *BMC Public Health*. 2011; 11(suppl 6):S8. [PubMed: 22375863]
40. Blankenship KA, West BS, Kershaw TS, Biradavolu MR. Power, community mobilization, and condom use practices among female sex workers in Andhra Pradesh, India. *AIDS*. 2008; 22(suppl 5):S109–16. [PubMed: 19098471]
41. Erausquin JT, Biradavolu M, Reed E, Burroway R, Blankenship KM. Trends in condom use among female sex workers in Andhra Pradesh, India: the impact of a community mobilization intervention. *J Epidemiol Commun Health*. 2012; 66(suppl 2):ii49–54.
42. Blanchard AK, Mohan HL, Shahmanesh M, et al. Community mobilization, empowerment and HIV prevention among female sex workers in south India. *BMC Public Health*. 2013; 13:1–13. [PubMed: 23280303]
43. Bharat S, Mahapatra B, Roy S, Saggurti N. Are female sex workers able to negotiate condom use with male clients? The case of mobile FSWs in four high HIV prevalence states of India. *PLoS ONE*. 2013; 8:e68043. [PubMed: 23840806]
44. Luchters S, Chersich MF, Rinyiru A, et al. Impact of five years of peer-mediated interventions on sexual behavior and sexually transmitted infections among female sex workers in Mombasa, Kenya. *BMC Public Health*. 2008; 8:143. [PubMed: 18445258]
45. Lippman SA, Donini A, Diaz J, Chinaglia M, Reingold A, Kerrigan D. Social-environmental factors and protective sexual behavior among sex workers: the Encontros intervention in Brazil. *Am J Public Health*. 2010; 100(suppl 1):S216–23. [PubMed: 19762673]
46. Kerrigan D, Telles P, Torres H, Overs C, Castle C. Community development and HIV/STI-related vulnerability among female sex workers in Rio de Janeiro, Brazil. *Health Educ Res*. 2008; 23:137–45. [PubMed: 17363361]
47. Mainkar MM, Pardeshi DB, Dale J, et al. Targeted interventions of the Avahan program and their association with intermediate outcomes among female sex workers in Maharashtra, India. *BMC Public Health*. 2011; 11(suppl 6):S2. [PubMed: 22375562]
48. Yi HS, Zheng TT, Wan YH, Mantell JE, Park M, Csete J. Occupational safety and HIV risk among female sex workers in China: a mixed-methods analysis of sex-work harms and mummies. *Glob Public Health*. 2012; 7:840–55. [PubMed: 22375698]
49. Deering KN, Bhattacharjee P, Mohan HL, et al. Violence and HIV risk among female sex workers in southern India. *Sex Transm Dis*. 2013; 42:168–74. [PubMed: 23441335]
50. Bradley J, Rajaram SP, Moses S, et al. Why do condoms break? A study of female sex workers in Bangalore, south India. *Sex Transm Infect*. 2012; 88:163–70. [PubMed: 22287532]
51. Braunstein SL, van de Wijgert JH, Vyankandondera J, Kestelyn E, Ntirushwa J, Nash D. Risk factor detection as a metric of STARHS performance for HIV incidence surveillance among female sex workers in Kigali, Rwanda. *Open AIDS J*. 2012; 6:112–21. [PubMed: 23056162]
52. Choi SY. Heterogeneous and vulnerable: the health risks facing transnational female sex workers. *Sociol Health Illn*. 2011; 33:33–49. [PubMed: 20942821]
53. Choi SY, Chen KL, Jiang ZQ. Client-perpetuated violence and condom failure among female sex workers in southwestern China. *Sex Transm Dis*. 2008; 35:141–46. [PubMed: 17921913]
54. Saggurti N, Jain AK, Sebastian MP, et al. Indicators of mobility, socio-economic vulnerabilities and HIV risk behaviours among mobile female sex workers in India. *AIDS Behav*. 2012; 16:952–59. [PubMed: 22186960]
55. Deering KN, Lyons T, Feng CX, et al. Client demands for unsafe sex: the socioeconomic risk environment for HIV among street and off-street sex workers. *J Acquir Immun Defic Syndr*. 2013; 63:522–31.
56. Bradley J, Rajaram S, Moses S, et al. Female sex worker client behaviors lead to condom breakage: a prospective telephone-based survey in Bangalore, south India. *AIDS Behav*. 2013; 17:559–67. [PubMed: 22576127]



57. Mishra S, Thompson LH, Sonia A, Khalid N, Emmanuel F, Blanchard JF. Sexual behaviour, structural vulnerabilities and HIV prevalence among female sex workers in Pakistan. *Sex Transm Infect.* 2013; 89(suppl 2):ii34–42. [PubMed: 23413402]
58. Wirth KE, Tchetgen Tchetgen EJ, Silverman JG, Murray MB. How does sex trafficking increase the risk of HIV infection? An observational study from southern India. *Am J Epidemiol.* 2013; 177:232–41. [PubMed: 23324332]
59. Sarkar K, Bal B, Mukherjee R, et al. Sex-trafficking, violence, negotiating skill, and HIV infection in brothel-based sex workers of eastern India, adjoining Nepal, Bhutan, and Bangladesh. *J Health Popul Nutr.* 2008; 26:223–31. [PubMed: 18686555]
60. Ulibarri MD, Strathdee SA, Ulloa EC, et al. Injection drug use as a mediator between client-perpetrated abuse and HIV status among female sex workers in two Mexico-US border cities. *AIDS Behav.* 2011; 15:179–85. [PubMed: 19636697]
61. Braunstein SL, Ingabire CM, Geubbels E, et al. High burden of prevalent and recently acquired HIV among female sex workers and female HIV voluntary testing center clients in Kigali, Rwanda. *PLoS One.* 2011; 6:e24321. [PubMed: 21949704]
62. Decker MR, Wirtz AL, Moguilnyi V, et al. Female sex workers in three cities in Russia: HIV prevalence, risk factors and experience with targeted HIV prevention. *AIDS Behav.* 2014; 18:562–72. [PubMed: 23929034]
63. Zhang C, Li X, Hong Y, Zhou Y, Liu W, Stanton B. Unprotected sex with their clients among low-paying female sex workers in southwest China. *AIDS Care.* 2012; 25:503–06. [PubMed: 23062062]
64. Erasquin JT, Reed E, Blankenship KM. Police-related experiences and HIV risk among female sex workers in Andhra Pradesh, India. *J Infect Dis.* 2011; 204(suppl 5):S1223–28. [PubMed: 22043036]
65. Strathdee SA, Abramovitz D, Lozada R, et al. Reductions in HIV/ STI incidence and sharing of injection equipment among female sex workers who inject drugs: results from a randomized controlled trial. *PLoS One.* 2013; 8:e65812. [PubMed: 23785451]
66. Strathdee SA, Lozada R, Martinez G, et al. Social and structural factors associated with HIV infection among female sex workers who inject drugs in the Mexico-US border region. *PLoS One.* 2011; 6:e19048. [PubMed: 21541349]
67. Bradley J, Rajaram S, Alary M, et al. Determinants of condom breakage among female sex workers in Karnataka, India. *BMC Public Health.* 2011; 11(suppl 6):S14. [PubMed: 22376237]
68. Jain AK, Saggurti N. The extent and nature of fluidity in typologies of female sex work in southern india: implications for HIV prevention programs. *J HIV AIDS Soc Serv.* 2012; 11:169–91. [PubMed: 22745597]
69. Urada LA, Morisky DE, Hernandez LI, Strathdee SA. Social and structural factors associated with consistent condom use among female entertainment workers trading sex in the Philippines. *AIDS Behav.* 2013; 17:523–35. [PubMed: 2223297]
70. Larios SE, Lozada R, Strathdee SA, et al. An exploration of contextual factors that influence HIV risk in female sex workers in Mexico: the social ecological model applied to HIV risk behaviors. *AIDS Care.* 2009; 21:1335–42. [PubMed: 19370470]
71. Ramesh BA, Moses S, Washington R, et al. Determinants of HIV prevalence among female sex workers in four south Indian states: analysis of cross-sectional surveys in twenty-three districts. *AIDS.* 2008; 22(suppl 5):S35–44. [PubMed: 19098478]
72. Shahmanesh M, Cowan F, Wayal S, Copas A, Patel V, Mabey D. The burden and determinants of HIV and sexually transmitted infections in a population-based sample of female sex workers in Goa, India. *Sex Transm Infect.* 2009; 85:50–59. [PubMed: 18684856]
73. Vandepitte J, Bukonya J, Weiss HA, et al. HIV and other sexually transmitted infections in a cohort of women involved in high-risk sexual behavior in Kampala, Uganda. *Sex Transm Dis.* 2011; 38:316–23. [PubMed: 23330152]
74. Nguyen TV, Khuu NV, Truong PH, Nguyen AP, Truong LX, Detels R. Correlation between HIV and sexual behavior, drug use, trichomoniasis and candidiasis among female sex workers in a Mekong Delta province of Vietnam. *AIDS Behav.* 2009; 13:873–80. [PubMed: 19085101]



75. Deschamps MM, Zorrilla CD, Morgan CA, et al. Recruitment of Caribbean female commercial sex workers at high risk of HIV infection. *Rev Panam Salud Publica*. 2013; 34:92–98. [PubMed: 24096973]
76. Ang A, Morisky DE. A multilevel analysis of the impact of socio-structural and environmental influences on condom use among female sex workers. *AIDS Behav*. 2012; 16:934–42. [PubMed: 21431414]
77. Morisky DE, Malow RM, Tiglaio TV, Lu S, Vissman AT, Rhodes SD. Reducing sexual risk among Filipina female bar workers: Effects of a CBPR-developed structural and network intervention. *AIDS Educ Prev*. 2010; 22:371–85. [PubMed: 20707696]
78. Urada LA, Malow RM, Santos NC, Morisky DE. Age differences among female sex workers in the Philippines: sexual risk negotiations and perceived manager advice. *AIDS Res Treat*. 2012; 2012:812635. [PubMed: 22848800]
79. Ye X, Shang M, Shen T, Pei B, Jiang X, Cai Y. Social, psychological, and environmental-structural factors determine consistent condom use among rural-to-urban migrant female sex workers in Shanghai China. *BMC Public Health*. 2012; 12:599. [PubMed: 22856643]
80. Chiao C, Morisky DE, Ksobiech K, Malow RM. Promoting HIV testing and condom use among Filipina commercial sex workers: findings from a quasi-experimental intervention study. *AIDS Behav*. 2009; 13:892–901. [PubMed: 18543095]
81. Chen Y, Li X, Shen Z, Zhou Y, Tang Z. Alcohol and sexual risk: an event-level analysis in commercial sex setting. *Addict Behav*. 2013; 38:2888–92. [PubMed: 24045031]
82. Hong Y, Fang XY, Li XM, Liu Y, Li MQ. Environmental support and HIV prevention behaviors among female sex workers in China. *Sex Transm Dis*. 2008; 35:662–67. [PubMed: 18418288]
83. Gu J, Lau JT, Chen X, et al. Using the Theory of Planned Behavior to investigate condom use behaviors among female injecting drug users who are also sex workers in China. *AIDS Care*. 2009; 21:967–75. [PubMed: 20024752]
84. Wang B, Li XM, McGuire J, Kamali V, Fang XY, Stanton B. Understanding the dynamics of condom use among female sex workers in China. *Sex Transm Dis*. 2009; 36:134–40. [PubMed: 19174727]
85. Zhang H, Liao MZ, Nie XJ, et al. Predictors of consistent condom use based on the Information-Motivation-Behavioral Skills (IMB) model among female sex workers in Jinan, China. *BMC Public Health*. 2011; 11:113. [PubMed: 21329512]
86. Chen Y, Li X, Zhou Y, Wen X, Wu D. Perceived peer engagement in HIV-related sexual risk behaviors and self-reported risk-taking among female sex workers in Guangxi, China. *AIDS Care*. 2013; 25:1114–21. [PubMed: 23316998]
87. Lau JT, Gu J, Tsui HY, et al. Prevalence and associated factors of condom use during commercial sex by female sex workers who were or were not injecting drug users in China. *Sex Health*. 2012; 9:368–76. [PubMed: 22877597]
88. Gu J, Lau JT, Chen HY, Chen X, Liu CL, Liu J. Mental health and interpersonal factors associated with HIV-related risk behaviors among non-institutionalized female injection drug users who are also sex workers in China. *Women Health*. 2010; 50:20–36. [PubMed: 20349393]
89. Yang X, Xia G. Correlates of consistent condom use among female entertainment workers in Shanghai, China: a repeated measures analysis. *Int J STD AIDS*. 2013; 24:555–59. [PubMed: 23970771]
90. Jung M. Sexual behavior and condom use among gay men, female sex workers, and their customers: evidence from South Korea. *PloS ONE*. 2013; 8:e66867. [PubMed: 23950786]
91. Reed E, Gupta J, Biradavolu M, Devireddy V, Blankenship KM. The context of economic insecurity and its relation to violence and risk factors for HIV among female sex workers in Andhra Pradesh, India. *Public Health Rep*. 2010; 125(suppl 4):81–89. [PubMed: 20629253]
92. Wang B, Li X, Stanton B, Zhang L, Fang X. Alcohol use, unprotected sex, and sexually transmitted infections among female sex workers in China. *Sex Transm Dis*. 2010; 37:629–36. [PubMed: 20601927]
93. Munoz FA, Pollini RA, Zuniga ML, et al. Condom access: associations with consistent condom use among female sex workers in two northern border cities of Mexico. *AIDS Educ Prev*. 2010; 22:455–65. [PubMed: 20973665]

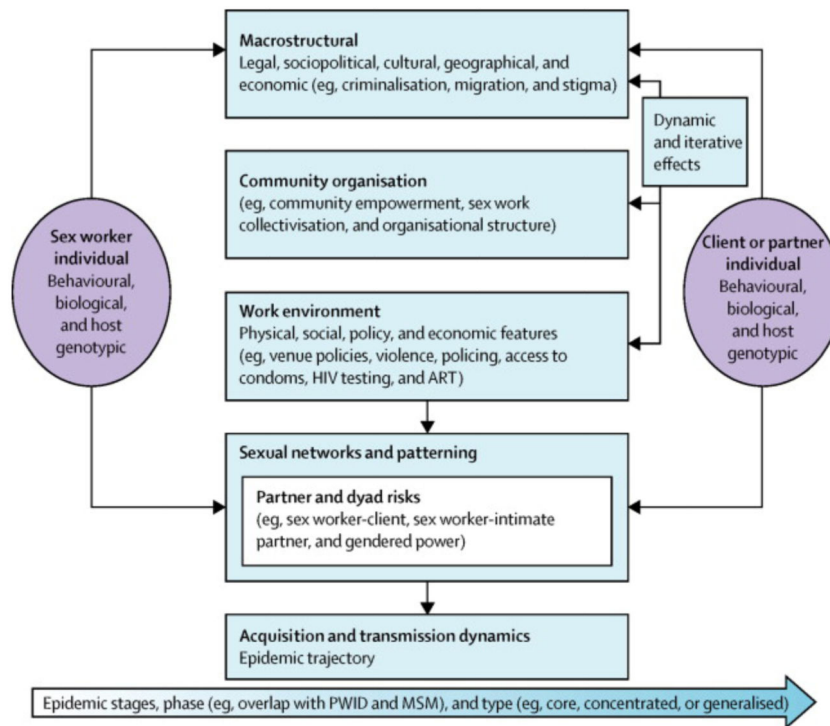
94. Damacena GN, Szwarcwald CL, de Souza PR, Dourado I. Risk factors associated with HIV prevalence among female sex workers in 10 Brazilian cities. *J Acquir Immun Defic Syndr*. 2011; 57:S144–52.
95. Thilakavathi S, Boopathi K, Kumar CP, et al. Assessment of the scale, coverage and outcomes of the Avahan HIV prevention program for female sex workers in Tamil Nadu, India: is there evidence of an Effect? *BMC Public Health*. 2011; 11(suppl 6):S3. [PubMed: 22375609]
96. Ramesh BM, Beattie TS, Shajy I, et al. Changes in risk behaviours and prevalence of sexually transmitted infections following HIV preventive interventions among female sex workers in five districts in Karnataka state, south India. *Sex Transm Infect*. 2010; 86(suppl 1):I17–24. [PubMed: 20167725]
97. Ramakrishnan L, Gautam A, Goswami P, et al. Programme coverage, condom use and STI treatment among FSWs in a large-scale HIV prevention programme: results from cross-sectional surveys in 22 districts in southern India. *Sex Transm Infect*. 2010; 86(suppl 1):i62–68. [PubMed: 20167734]
98. Liao M, Bi Z, Liu X, et al. Condom use, intervention service utilization and HIV knowledge among female sex workers in China: results of three consecutive cross-sectional surveys in Shandong Province with historically low HIV prevalence. *Int J STD AIDS*. 2012; 23:e23–29. [PubMed: 22581891]
99. Shi Y, Guo S, Bo F, Zhang X, Cao W, Wang P. Impact evaluation of a sexually transmitted disease preventive intervention among female sex workers in Hohhot, China. *Int J Infect Dis*. 2013; 17:e59–64. [PubMed: 23154177]
100. Boily MC, Pickles M, Lowndes CM, et al. Positive impact of a large-scale HIV prevention programme among female sex workers and clients in South India. *AIDS*. 2013; 27:1449–60. [PubMed: 23462221]
101. Jayaraman GC, Kumar S, Isac S, et al. Demographic changes and trends in risk behaviours, HIV and other sexually transmitted infections among female sex workers in Bangalore, India involved in a focused HIV preventive intervention. *Sex Transm Infect*. 2013; 89:635–41. [PubMed: 24045090]
102. Kayembe PK, Mapatano MA, Busangu AF, et al. Determinants of consistent condom use among female commercial sex workers in the Democratic Republic of Congo: implications for interventions. *Sex Transm Infect*. 2008; 84:202–26. [PubMed: 18055581]
103. Hemalatha R, Kumar RH, Venkaiah K, Srinivasan K, Brahmam GN. Prevalence of & knowledge, attitude & practices towards HIV & sexually transmitted infections (STIs) among female sex workers (FSWs) in Andhra Pradesh. *Ind J Med Res*. 2011; 134:470–75.
104. Rachakulla HK, Kodavalla V, Rajkumar H, et al. Condom use and prevalence of syphilis and HIV among female sex workers in Andhra Pradesh, India—following a large-scale HIV prevention intervention. *BMC Public Health*. 2011; 11(suppl 6):S1. [PubMed: 22376071]
105. Morris CN, Morris SR, Ferguson AG. Sexual behavior of female sex workers and access to condoms in Kenya and Uganda on the Trans-Africa highway. *AIDS Behav*. 2009; 13:860–65. [PubMed: 18665445]
106. Lau JT, Choi KC, Tsui HY, et al. Changes in HIV-related behaviours over time and associations with rates of HIV-related services coverage among female sex workers in Sichuan, China. *Sex Transm Infect*. 2008; 84:212–26. [PubMed: 18339661]
107. Gutierrez JP, McPherson S, Fakoya A, Matheou A, Bertozzi SM. Community-based prevention leads to an increase in condom use and a reduction in sexually transmitted infections (STIs) among men who have sex with men (MSM) and female sex workers (FSW): the Frontiers Prevention Project (FPP) evaluation results. *BMC Public Health*. 2010; 10:497. [PubMed: 20718977]
108. Thompson MA, Aberg JA, Hoy JF, et al. Antiretroviral treatment of adult HIV infection: 2012 recommendations of the International Antiviral Society. *JAMA*. 2012; 308:387–402. [PubMed: 22820792]
109. Pickles M, Boily MC, Vickerman P, et al. Assessment of the population-level Effectiveness of the Avahan HIV-prevention programme in south India: a preplanned, causal-pathway-based modelling analysis. *Lancet Glob Health*. 2013; 1:e289–99. [PubMed: 25104493]

110. Schechter MT, Boyko WJ, Douglas B, et al. The Vancouver Lymphadenopathy-AIDS Study: 6. HIV seroconversion in a cohort of homosexual men. *CMAJ*. 1986; 135:1355–60. [PubMed: 3022904]
111. Strathdee SA, Patrick DM, Currie SL, et al. Needle exchange is not enough: lessons from the Vancouver injecting drug use study. *AIDS*. 1997; 11:59–65. [PubMed: 9110076]
112. Wood E, Kerr T, Marshall BD, et al. Longitudinal community plasma HIV-1 RNA concentrations and incidence of HIV-1 among injecting drug users: prospective cohort study. *BMJ*. 2009; 338:B1649. [PubMed: 19406887]
113. Tyndall MW, Patrick D, Spittal P, Li K, O'Shaughnessy MV, Schechter MT. Risky sexual behaviours among injection drugs users with high HIV prevalence: implications for STD control. *Sex Transm Infect*. 2002; 78(suppl 1):170–75.
114. Shannon K, Bright V, Gibson K, Tyndall MW, Maka Project Partnership. Sexual and drug-related vulnerabilities for HIV infection among women engaged in sex work in Vancouver, Canada. *Can J Public Health*. 2007; 98:465–69. [PubMed: 19039884]
115. Wood E, Schachar J, Li K, et al. Sex trade involvement is associated with elevated HIV incidence among injection drug users in Vancouver. *Addict Res Theory*. 2007; 15:321–25.
116. British Columbia Centre for Disease Control. HIV in British Columbia: annual surveillance report 2011. British Columbia Centre for Disease Control; Vancouver: 2012.
117. Wang X, Salters KA, Zhang W, et al. Women's health care utilization among harder-to-reach HIV-infected women ever on antiretroviral therapy in British Columbia. *AIDS Res Treat*. 2012; 2012:560361. [PubMed: 23227316]
118. Deering KN, Lyons T, Feng CX, et al. Client demands for unsafe sex: the socioeconomic risk environment for HIV among street and off-street sex workers. *J Acquir Immune Defic Syndr*. 2013; 63:522–31. [PubMed: 23614990]
119. Open Society Foundations. Criminalising condoms: how policing practices put sex workers and HIV services at risk in Kenya, Namibia, Russia, South Africa, USA, and Zimbabwe. Open Society Foundations; New York: 2012.
120. Shannon K, Kerr T, Allinott S, Chettiar J, Shoveller J, Tyndall MW. Social and structural violence and power relations in mitigating HIV risk of drug-using women in survival sex work. *Soc Sci Med*. 2008; 66:911–21. [PubMed: 18155336]
121. Argento E, Reza-Paul S, Lorway R, et al. Confronting structural violence in sex work: lessons from a community-led HIV prevention project in Mysore, India. *AIDS Care*. 2011; 23:69–74. [PubMed: 21218278]
122. Okal J, Chersich MF, Tsui S, Sutherland E, Temmerman M, Luchters S. Sexual and physical violence against female sex workers in Kenya: a qualitative enquiry. *AIDS Care*. 2011; 23:612–18. [PubMed: 21390890]
123. Krüsi A, Chettiar J, Ridgway A, Abbott J, Strathdee SA, Shannon K. Negotiating safety and sexual risk reduction with clients in unsanctioned safer indoor sex work environments: a qualitative study. *Am J Public Health*. 2012; 102:1154–59. [PubMed: 22571708]
124. Deering KN, Amin A, Shoveller J, et al. A systematic review of the correlates of violence against sex workers. *Am J Public Health*. 2014; 104:e42–54. [PubMed: 24625169]
125. Shannon K, Kerr T, Strathdee SA, Shoveller J, Montaner JS, Tyndall MW. Prevalence and structural correlates of gender based violence among a prospective cohort of female sex workers. *BMJ*. 2009; 339:B2939. [PubMed: 19671935]
126. National AIDS Control Council and National AIDS and STIs Control Programme. Kenya AIDS epidemic update 2011. UNAIDS; Geneva: 2011.
127. Kimani J, Kaul R, Nagelkerke NJ, et al. Reduced rates of HIV acquisition during unprotected sex by Kenyan female sex workers predating population declines in HIV prevalence. *AIDS*. 2008; 22:131–37. [PubMed: 18090401]
128. Ngugi E, Benoit C, Hallgrimsdottir H, Jansson M, Roth EA. Partners and clients of female sex workers in an informal urban settlement in Nairobi, Kenya. *Culture Health Sex*. 2012; 14:17–30.
129. Chersich MF, Luchters SM, Malonza IM, Mwarogo P, King'ola N, Temmerman M. Heavy episodic drinking among Kenyan female sex workers is associated with unsafe sex, sexual

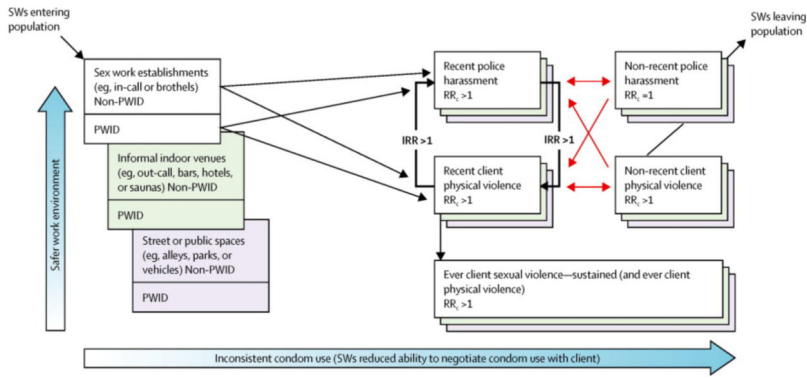
- violence and sexually transmitted infections. *Int J STD AIDS*. 2007; 18:764–79. [PubMed: 18005511]
130. McClelland RS, Graham SM, Richardson BA. Treatment with antiretroviral therapy is not associated with increased sexual risk behavior in Kenyan female sex workers. *AIDS*. 2010; 24:891–97. [PubMed: 20179576]
  131. Muraguri, N.; Patel, S.; Musyoki, H., et al. National guidelines for HIV/STI programs for sex workers. Ministry of Public Health and Sanitation; Nairobi: 2010.
  132. Papo JK, Bauni EK, Sanders EJ, Brocklehurst P, Jaffe HW. Exploring the condom gap: is supply or demand the limiting factor—condom access and use in an urban and a rural setting in Kilifi district, Kenya. *AIDS*. 2011; 25:247–55. [PubMed: 21150559]
  133. The UN General Assembly Special Session on Drugs. Country progress report: UNGASS: India. UNAIDS; Geneva: 2010.
  134. Verma R, Shekhar A, Khobragade S, et al. Scale-up and coverage of Avahan: a large scale HIV prevention programme among female sex workers and men who have sex with men in four Indian states. *Sex Transm Infect*. 2010; 86(suppl 1):i76–82. [PubMed: 20167737]
  135. Department of AIDS Control, National AIDS Control Organization. Annual report 2011–12. Department of AIDS Control, National AIDS Control Organization; New Delhi: 2011.
  136. India Health Action Trust. HIV/AIDS situation and response in Karnataka: epidemiological appraisal using data triangulation. India Health Action Trust; Bangalore: 2010.
  137. Department of AIDS Control, National AIDS Control Organization. Analysis of TI program performance—April 2009–March 2010. Department of AIDS Control, National AIDS Control Organization; New Delhi: 2011.
  138. Cohen J. HIV/AIDS in India: Songachi sex workers stymie HIV. *Science*. 2004; 304:506. [PubMed: 15105470]
  139. Reed E, Gupta J, Biradavolu M, Blankenship KM. Migration/ mobility and risk factors for HIV among female sex workers in Andhra Pradesh, India: implications for HIV prevention. *Int J STD AIDS*. 2012; 23:e7–13. [PubMed: 22581964]

### KEY MESSAGES

- Sex workers face a disproportionately large burden of HIV across concentrated and generalised epidemic settings, with substantial heterogeneity in HIV epidemics and structural determinants, as well as features that are very context specific.
- Fewer than half of epidemiological studies on HIV acquisition and transmission risk among female sex workers explicitly considered structural determinants.
- Epidemiology of HIV and structural determinants among female sex workers is disproportionately drawn from Asia, with large gaps in heavy burden regions of sub-Saharan Africa, Russia, and eastern Europe.
- In Canada and Kenya, where sexual violence has an immediate and sustained effect on non-condom use, elimination of violence by clients, police, and strangers could avert 17–20% of HIV infections among female sex workers and their clients over the next decade.
- Coverage of and access to prevention and treatment among female sex workers lag behind the general population and scale-up to optimal coverage of condoms and HIV care continuum will probably only be feasible alongside other structural change. In heavy HIV-burden settings, such as Mombasa, where antiretroviral therapy and condom access remain suboptimal, scale-up of antiretroviral therapy access to WHO guidelines of a CD4 cell count of less than 500 cells per  $\mu\text{L}$  for both FSWs and their clients could avert 34% of HIV infections and even modest scale-up of sex worker-led outreach could avert 20% of HIV infections among FSWs and their clients over the next decade.
- Interventions to promote access to safer sex work environments (eg, changes to venue, management, and policing policies, and access to prevention) could avert a substantial proportion of infections across diverse settings
- Modelling suggests that across both generalised and concentrated HIV epidemics, decriminalisation of sex work could have the largest effect on the course of the HIV epidemic, averting 33–46% of incident infections over the next decade through combined effects on violence, police harassment, safer work environments, and HIV transmission pathways.



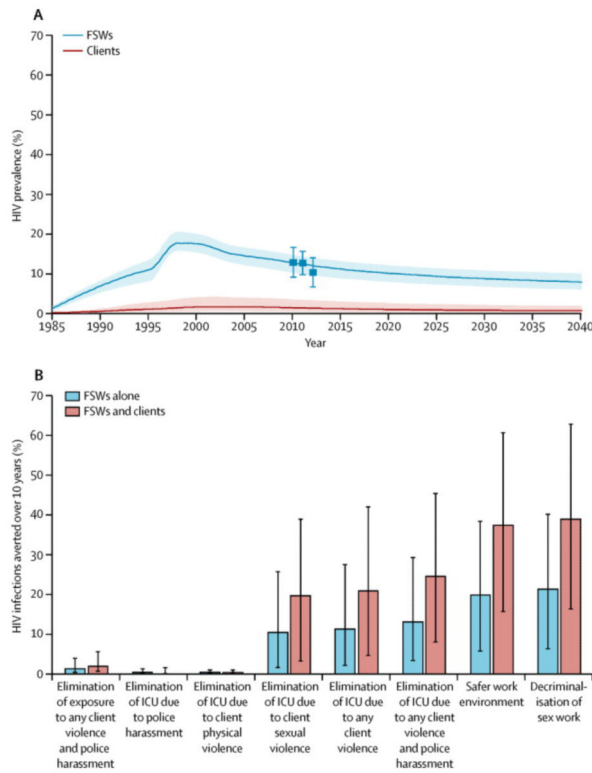
**Figure 1. Structural HIV determinants framework for sex work**  
 Adapted with permission from Shannon and colleagues.<sup>19</sup> ART=antiretroviral therapy.  
 PWID=people who inject drugs. MSM=men who have sex with men.



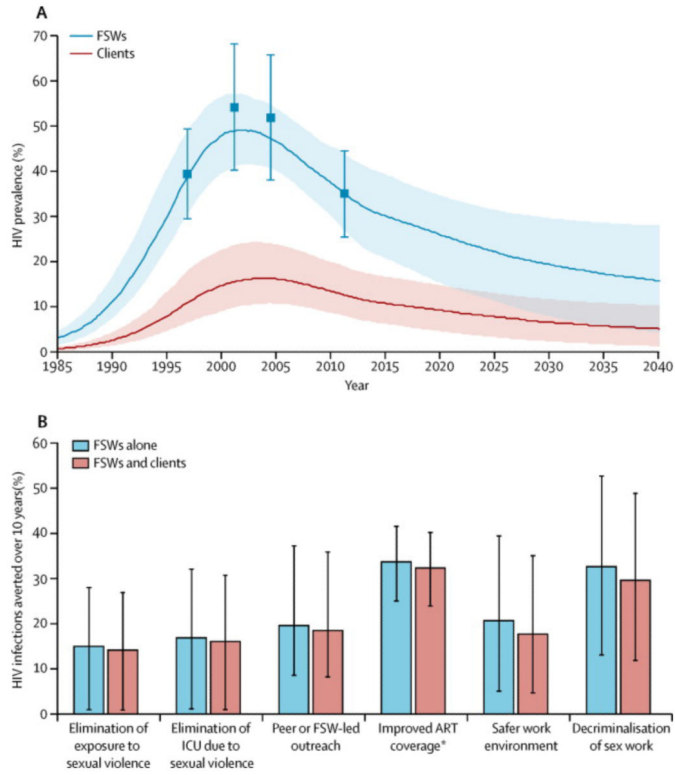
**Figure 2. Model of dynamic pathways between macrostructural (eg, law reforms) and social, policy, and physical features of the work environment (eg, access to safer work venues, violence, and policing) on HIV acquisition in female sex workers in Vancouver, Canada**

The flowchart represents the dynamic and iterative pathways between various structural conditions (eg, recent or non-recent exposure to police harassment or client physical violence, or a lifetime exposure to sexual violence), which vary by work environment (represented by the coloured boxes). Female sex workers (FSWs; PWID or non-PWID) are assumed to work in a given work environment for their lifetime. FSWs on the far left have not experienced any violence yet. FSWs can be repeatedly exposed to different violence events at a frequency specific to their work environment; orange arrows show the flow of FSWs between recent and non-recent exposure to violence.  $IRR > 1$  shows the increase in the rate of exposure to recent police harassment if recently exposed to client physical violence or vice versa (bold arrows).  $RRc > 1$  denotes the increased risk of inconsistent condom use after a recent or non-recent exposure to the given form of violence or police harassment for the duration that they have been in that situation. PWID=people who inject drugs. IRR=incident rate ratio.  $RRc$ =inconsistent condom use risk ratio. SW=sex worker.

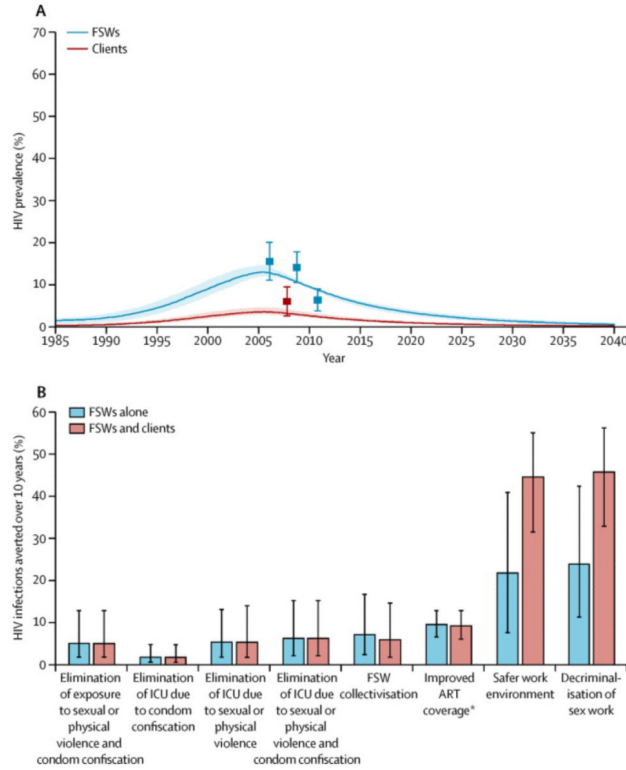




**Figure 3. HIV prevalence and percentage of infections potentially averted in FSWs and their clients in the next 10 years through structural changes in Vancouver, Canada**  
 (A) Predicted HIV prevalence in FSWs between 1985 and 2040. Squares show the empirical estimates (and 95% CIs) from the data; bold line shows the median (shaded area shows 95% CI) of the model predictions from the multivariate parameter fits. (B) Predicted fractions of new HIV infections that could be averted in FSWs and their clients from structural changes in 2014–24; vertical bars show 95% uncertainty intervals. Elimination of exposure means no future exposure to this form of violence. Elimination of ICU means an immediate and lasting reduction of ICU associated with past exposure to the form of violence. The values used to construct the graphs and data for HIV prevalence and infections averted assuming no structural changes are made can be found in the appendix. FSW=female sex worker. ICU=inconsistent condom use.



**Figure 4. HIV prevalence and percentage of infections potentially averted in FSWs and their clients in the next 10 years through structural changes in Mombasa, Kenya**  
 (A) Predicted HIV prevalence in FSWs between 1985 and 2040. Squares show the empirical estimates (and 95% CIs) from the data; bold line shows the median (shaded area shows 95% CI) of the model predictions from the multivariate parameter fits. (B) Predicted fractions of new HIV infections that could be averted in FSWs and their clients from structural changes in 2014–24; vertical bars show 95% uncertainty intervals. Elimination of exposure means no future exposure to this form of violence. Elimination of ICU means an immediate and lasting reduction of ICU associated with past exposure to the form of violence. FSW=female sex worker. ICU=inconsistent condom use. ART=antiretroviral therapy. \*Increase in CD4 eligibility according to WHO guidelines to less than 500 cells per  $\mu$ L. The values used to construct the graphs and data for HIV prevalence and infections averted assuming no structural changes are made can be found in the appendix.



**Figure 5. HIV prevalence and percentage of infections potentially averted in female sex workers (FSWs) and their clients in the next 10 years through structural changes in Bellary, India**  
 (A) Predicted HIV prevalence in FSWs between 1985 and 2040. Squares show the empirical estimates (and 95% CIs) from the data; bold line shows the median (shaded area shows 95% CI) of the model predictions from the multivariate parameter fits. (B) Predicted fractions of new HIV infections that could be averted in FSWs and their clients from structural changes in 2014–24; vertical bars show 95% uncertainty intervals. Elimination of exposure means no future exposure to this form of violence. Elimination of ICU means an immediate and lasting reduction of ICU associated with past exposure to the form of violence. \*Increase in CD4 eligibility according to WHO guidelines to less than 500 cells per  $\mu\text{L}$ . The values used to construct the graphs and data for HIV prevalence and infections averted assuming no structural changes are made can be found in the appendix. FSW=female sex worker. ICU=inconsistent condom use. ART=antiretroviral therapy.

**Table**

Structural drivers: mitigating and potentiating of HIV risk among female sex workers, 2008–13

	Association with HIV (or HIV and STI) infection	Association with non-condom use
<b>Macrostructural</b>		
Laws and policies governing sex work (eg, red-light district demolition due to legal changes and enforcement of criminal sanctions)	Negative	Positive
Regulation of sex workers (eg, mandatory government registration)	..	Negative
Stigma (eg, sex work-related stigma or discrimination)	..	Positive
Food insecurity (eg, childhood malnourishment)	..	Positive
Economic insecurity due to restrictive laws or policies for women or sex workers	..	Positive
Migration and mobility patterns (eg, internal mobility, sex work at religious festivals, international migration, or mobility for sex work)	Positive or negative	Positive or negative
Residential instability (eg, evictions due to policies on sex work or women)	..	Positive
Geographical district, region, or country of residence (eg, residence in a higher-prevalence district or rural vs urban)	Positive	Positive or negative
Sex trafficking (eg, forced sexual labour)	Positive	Positive
Historical gender-based violence (physical or sexual)	..	Positive
Foster care history	Positive	..
Gender empowerment	..	Negative
Higher education and literacy level	Positive or negative	Negative
<b>Community organisation</b>		
Community mobilisation	Negative	Negative
Sex work collectivisation (eg, collective agency, social cohesion and mutual aid among sex workers, and collective identity)	..	Negative
Peer leadership, education, or outreach (eg, frequency of contact with coworkers)	Negative	Negative
Sex work drop-in spaces	Negative	Negative
Sex worker advocacy or outreach to police and government (eg, collective action)	Negative	Negative
Other forms of social or community participation (eg, participation in non-sex worker community organisations or social networks)	..	Negative
<b>Social features of work environment</b>		
Physical and sexual violence (perpetrated by clients, police, managers, and pimps)	Positive	Positive
Local policing practices (eg, displacement, harassment, fines, arrest, incarceration, raids, and confiscation of condoms)	Positive	Positive
Presence of management (eg, manager, pimp, or administrator)	Positive	Positive
Supportive management practices (eg, owner or management support for condom use and HIV and STI prevention, and manager protection)	..	Negative

	Association with HIV (or HIV and STI) infection	Association with non-condom use
<b>Macrostructural</b>		
Peer norms and support (eg, peer or coworker support for condom use and HIV and STI prevention, and condom use norms)	..	Negative
Drug and alcohol use in workplace (eg, forced alcohol use or drug or alcohol use during sex with clients)	Positive	Positive
Access to and control over social resources (eg, forms of government identification)	..	Negative
<b>Physical features of work environment</b>		
Sex work venues	Positive or negative	Positive or negative
Access to or coverage of condoms (eg, free or subsidised condoms, condom availability and affordability, and community-level increase in harm reduction supplies)	Negative	Negative
Access to or coverage of HIV care continuum (eg, HIV testing and treatment, and access to HIV-related care and interventions)	Positive or negative	Negative
Access to or coverage of sexual and reproductive health care (eg, STI testing and treatment, and contraceptive use)	Positive or negative	Positive or negative
<b>Policy features of work environment</b>		
Venue-based policies (eg, 100% condom use, other venue condom use rules or policies, and supportive sexual health policies)		Negative
<b>Economic features of work environment</b>		
Poverty-related and economic pressures (including poor living conditions and homelessness), economic drivers of sex work (eg, children and debt)	Positive	Positive or negative
Economic incentive and client demand for non-condom use	Positive	Positive
Delay or refusal of payment for sex, or property stolen	..	Positive
Bribes or fines (by police or managers; eg, police accepted bribes or gifts, or sex workers had sex with police to avoid arrest)	..	Positive
Higher income, prices charged for services, and control over prices charged	Negative	Positive or negative
Other income sources and financial support	Negative	Negative
Under contract	..	Negative

The appendix lists all published studies retrieved (2008–13) in the report and references for this table. STI=sexually transmitted infection. ..=variable was not measured in any of the available published data.