

UC Berkeley

IGS Poll

Title

Polling Brief: Inland Empire Latino Experiences Accessing Basic Resources

Permalink

<https://escholarship.org/uc/item/3w63m1pg>

Authors

Lerman, Amy E., PhD

Melgar, Jesse F., MPP

Hall, Ryan

Publication Date

2024-09-16



POLLING BRIEF

Inland Empire Latino Experiences Accessing Basic Resources

SEPTEMBER 2024



Researchers

Prepared For

Berkeley
Public Policy
The Goldman School

POSSIBILITYLAB
UNIVERSITY OF CALIFORNIA



Researchers & Authors

Amy E. Lerman, PhD

Professor of Public Policy and Political Science
University of California, Berkeley
Executive Director
Possibility Lab, UC Berkeley Goldman School of Public Policy

Jesse F. Melgar, M.P.P.

Senior Advisor for Strategy & Public Affairs
Possibility Lab, UC Berkeley Goldman School of Public Policy

Ryan Hall

Senior Research Fellow
Possibility Lab, UC Berkeley Goldman School of Public Policy

POSSIBILITY LAB

UNIVERSITY OF CALIFORNIA

The Possibility Lab brings together a team of policy researchers and practitioners who partner with government and community to design, pilot, and scale data-driven innovations for the public good. Through ongoing collaborations, the Lab is pioneering innovative ways to center community perspectives and expertise in public policy: by working directly with diverse stakeholders to foster engagement, empowerment, and equity. Projects are co-designed and carried out with community and government partners, to ensure that innovations are feasible in the short term and scalable in the future. The Possibility Lab is led by Professor Amy E. Lerman, Michelle Schwartz Chair and Professor of Public Policy and Political Science at the University of California, Berkeley. Learn more at possibilitylab.berkeley.edu

Table of Contents



About the Poll	1
Survey Methodology	2
Survey Questions & Tabulation	3
Summary	4
Inland Empire Latino Voters Responses	5
Statewide California Voters Responses	6
IE Latino Voters vs. California Voters	7
IE Latino Voters vs. IE White Voters	8
IE Latino Voters vs. IE White Voters Poll Demographics	9



About the Poll

Survey Describing Inland Empire Latino Experiences Accessing Basic Resources



In January 2024, the **Possibility Lab** at the University of California asked 8,199 California voters about their ability to access 12 basic resources where they live and at a price they can afford. These essentials included: energy, housing, healthy food, clean water, transportation, internet service, safe spaces to gather, childcare, eldercare, education, and employment. The questions were part of the **Berkeley Institute of Governmental Studies (IGS) Poll**, a periodic survey of California's registered voters on timely matters in politics and public policy. This polling brief examines responses from the 227 Inland Empire Latino voters who completed the survey.

POSSIBILITYLAB
UNIVERSITY OF CALIFORNIA





Survey Methodology

The Berkeley IGS Poll is regularly administered to a stratified random sample of registered voters in California. The poll is administered online, via email invitations, and through the Qualtrics platform. This iteration of the poll yielded 8,199 respondents across the state. This poll brief further narrowed that sample to Latinos who reside in Riverside and San Bernardino counties for a sample size of 227 respondents.

Political Data, Inc. (PDI) provides Berkeley IGS with email addresses and other public information about each invitee contained on the state's official voter registration rolls, including age, gender, county of residence, and party registration. The sample provided by PDI to Berkeley IGS is stratified on age and gender to account for differential response rates by those characteristics. IGS also requests random samples of voters who have requested their ballots in Spanish, and invites participants to complete the survey in Spanish or English. Personally identifiable information is removed from the data file before processing and replaced with a unique anonymous identifier. During data processing, sample adjustment weights are applied to align the survey results with the demographic and geographic composition of California's registered voters.

For more on the survey methodology, see the [Berkeley IGS Poll website](#) and the [survey methodology documentation](#).

Survey Questions

Respondents to the survey were shown the following prompt:

"Many Californians struggle to get basic resources like food, water, energy, and healthcare for a variety of reasons. Certain resources can be hard to access in some parts of the state, and sometimes they can be too expensive for people to afford. Do you agree or disagree with each of the following statements about access to basic resources for the part of the state where you live?"

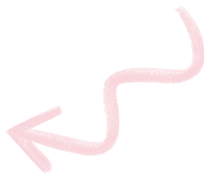
Each respondent was then asked a set of 12 questions, presented in random order:

- Where I live, it is difficult for me to get the **energy** I need to power and heat my home at a price I can afford
- Where I live, it is difficult for me to find suitable **housing** at a price I can afford
- Where I live, it is difficult for me to get **healthy food** at a price I can afford
- Where I live, it is difficult for me to get **clean water** for drinking and washing at a price I can afford
- Where I live, it is difficult for me to find **transportation** by car or public transit to get to the places I need to go at a price I can afford
- Where I live, it is difficult for me to get **Internet** service at a price I can afford
- Where I live, it is difficult for me to get **cellphone** service at a price I can afford
- Where I live, there is so much crime that it is difficult for me to find **safe spaces** to gather with friends and family
- Where I live, it is difficult for people to find affordable **childcare**
- Where I live, it is difficult for people taking care of older adults to find affordable **eldercare**
- Where I live, it is difficult for people like me to get affordable **education and training** to be able to advance their careers
- Where I live, it is difficult for people to find good **jobs** when we need or want them

Data & Tabulations

Data from the Berkeley IGS poll can be accessed [on their website](#) and [queried from the website of UC Berkeley's D-Lab](#).

Summary



Riverside and San Bernardino counties in Southern California are commonly referred to as the Inland Empire (IE). This region is one of the fastest growing and most diverse in the state and nation. Key to this growth is a booming Latino community that accounts for 52% of the population, with projections expected to reach 74% by 2060 (USC).

In early 2024, the **Possibility Lab's** Abundance Accelerator conducted a survey of 8,199 California voters, in partnership with the **Berkeley Institute of Governmental Studies (IGS)**. The survey asked about voters' ability to access 12 basic resources where they live and at a price they can afford. For this polling brief, responses from that poll were subset to focus on respondents who identified as Latino and who reside in Riverside and San Bernardino counties. For most questions included in the poll, respondents were asked how difficult it is to access specific resources for themselves, personally. The exceptions were for education, jobs, childcare and eldercare, where respondents were asked about difficulty accessing these resources for people, in general, in the area where they live. This memo describes responses from IE Latino voters who completed the survey (n=227) compared to White IE voters who completed the survey (n=439) and California voters who completed the survey statewide (n=8,199).

Key Findings from the Survey:

- **Clean Water, Safety, and Internet are accessible for most IE Latino voters.** Only 33%, 40%, and 44%, respectively, of respondents say accessing these essentials is difficult.
- **Education & Training are accessible for about half of IE Latino voters.** Only 47% of respondents agreed or strongly agreed that education and training are difficult to access, with the remaining, or 53%, disagreeing, strongly disagreeing, or having no opinion.
- **Transportation is accessible for about half of IE Latino voters.** Only 47% of respondents said accessing transportation was difficult, with the remaining, or 53%, disagreeing, strongly disagreeing, or having no opinion.
- **Affordable housing is difficult to find for many IE Latino voters.** Nearly 80% of these respondents agree or strongly agree that where they live it is difficult for them to find suitable housing at a price they can afford.
- **Good jobs are hard to find for many IE Latino voters.** Some 61% of these respondents agree or strongly agree that it is difficult for people to find good jobs when they need or want them.
- **Affordable, healthy food is hard to get for many IE Latino voters.** 70% of these respondents agree or strongly agree that it is difficult for them to get healthy food at a price they can afford.
- **Affordable eldercare and childcare are hard to secure for many IE Latino voters.** Nearly two-thirds of these respondents agree or strongly agree that it is difficult for people in their community to find affordable childcare or eldercare (65% and 63%, respectively).
- **Accessing affordable energy is challenging for more than half of IE Latino voters.** 55% of these respondents agree or strongly agree that it is difficult for them to get the energy they need to power and heat their home at a price they can afford.

IE Latino voters have a harder time accessing essential resources in every category than IE White voters. Likewise, IE Latino voters expressed more difficulty accessing essential resources on each of the twelve categories, relative to California voters overall.

Specifically, when compared with IE White voters, IE Latino voters were 19 percentage points more likely to report difficulty accessing healthy food (70% vs. 51%). When IE Latino voter responses are compared to all California voter responses, the disparity grows to 23 percentage points (70% vs. 47%). IE Latino voters were also 15 percentage points more likely to report difficulty accessing good jobs than IE White voters (61% vs. 46%). The disparity grows to 16 percentage points when compared to all California voters.

The percentages in this report are likely to reflect low-bound estimates of felt need. Actual need among Latinos as a whole in the region is likely higher than reported here, as these data include registered voters only.

Inland Empire Latino Voters

Agreement that it is Difficult to Access Essential Resources Where They Live & at an Affordable Price



Housing **79%**

Of Inland Empire Latinos agreed with the statement: "Where I live, it is difficult for me to find suitable housing at a price I can afford."

Food **70%**

Of Inland Empire Latinos agreed with the statement: "Where I live, it is difficult for me to get healthy food at a price I can afford."

Childcare **65%**

Of Inland Empire Latinos agreed with the statement: "Where I live, it is difficult for people to find affordable childcare."

Eldercare **63%**

Of Inland Empire Latinos agreed with the statement: "Where I live, it is difficult for people taking care of older adults to find affordable eldercare."

Jobs **61%**

Of Inland Empire Latinos agreed with the statement: "Where I live, it is difficult for people to find good jobs when we need or want them."

Energy **55%**

Of Inland Empire Latinos agreed with the statement: "Where I live, it is difficult for me to get the energy I need to power and heat my home at a price I can afford."

Education & Training **47%**

Of Inland Empire Latinos agreed with the statement: "Where I live, it is difficult for people like me to get affordable education and training to be able to advance their careers."

Transportation **47%**

Of Inland Empire Latinos agreed with the statement: "Where I live, it is difficult for me to find transportation by car or public transit to get to the places I need to go at a price I can afford."

Cell Service **46%**

Of Inland Empire Latinos agreed with the statement: "Where I live, it is difficult for me to get cellphone service at a price I can afford."

Internet **44%**

Of Inland Empire Latinos agreed with the statement: "Where I live, it is difficult for me to get Internet service at a price I can afford."

Safety **40%**

Of Inland Empire Latinos agreed with the statement: "Where I live, there is so much crime that it is difficult for me to find safe spaces to gather with friends and family."

Clean Water **33%**

Of Inland Empire Latinos agreed with the statement: "Where I live, it is difficult for me to get clean water for drinking and washing at a price I can afford."

Statewide California Voters

Agreement that it is Difficult to Access Essential Resources Where They Live & at an Affordable Price



Housing 71%

Of Californians agreed with the statement: "Where I live, it is difficult for me to find suitable housing at a price I can afford."

Food 47%

Of Californians agreed with the statement: "Where I live, it is difficult for me to get healthy food at a price I can afford."

Childcare 56%

Of Californians agreed with the statement: "Where I live, it is difficult for people to find affordable childcare."

Eldercare 60%

Of Californians agreed with the statement: "Where I live, it is difficult for people taking care of older adults to find affordable eldercare."

Jobs 45%

Of Californians agreed with the statement: "Where I live, it is difficult for people to find good jobs when we need or want them."

Energy 41%

Of Californians agreed with the statement: "Where I live, it is difficult for me to get the energy I need to power and heat my home at a price I can afford."

Education & Training 36%

Of Californians agreed with the statement: "Where I live, it is difficult for people like me to get affordable education and training to be able to advance their careers."

Transportation 31%

Of Californians agreed with the statement: "Where I live, it is difficult for me to find transportation by car or public transit to get to the places I need to go at a price I can afford."

Cell Service 25%

Of Californians agreed with the statement: "Where I live, it is difficult for me to get cellphone service at a price I can afford."

Internet 31%

Of Californians agreed with the statement: "Where I live, it is difficult for me to get Internet service at a price I can afford."

Safety 28%

Of Californians agreed with the statement: "Where I live, there is so much crime that it is difficult for me to find safe spaces to gather with friends and family."

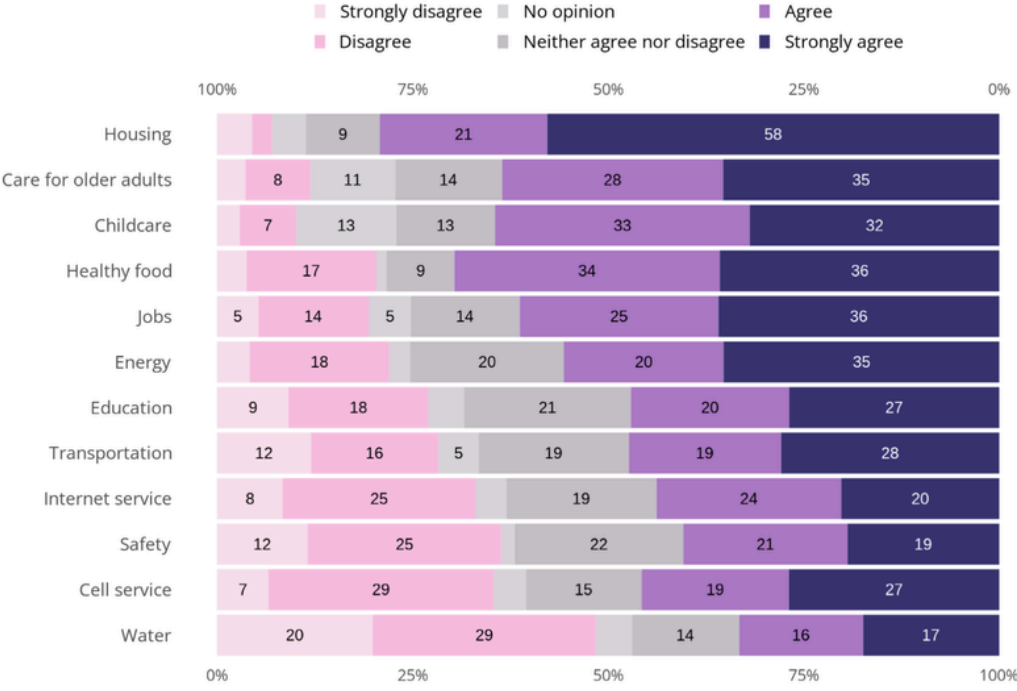
Clean Water 18%

Of Californians agreed with the statement: "Where I live, it is difficult for me to get clean water for drinking and washing at a price I can afford."



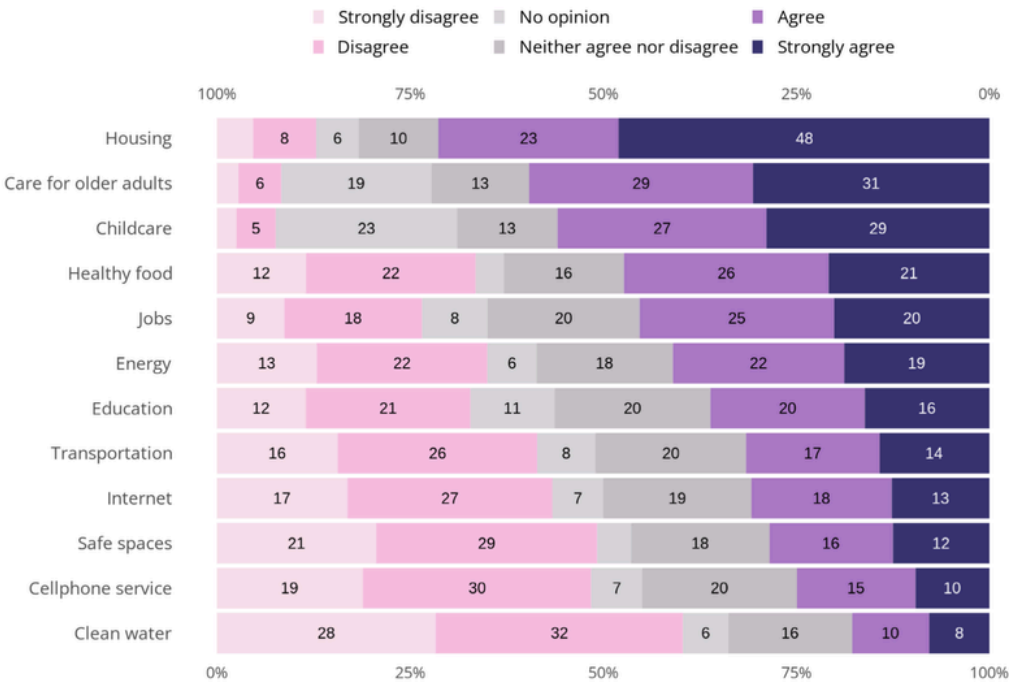
IE Latino Voters vs. Statewide California Voters

Figure 1: Percent of *Inland Empire Latino voters* indicating agreement that it is difficult to access essential resources or goods where they live.



Percentages are rounded to the nearest whole number.

Figure 2: Percent of *Statewide California voters* indicating agreement that it is difficult to access essential resources or goods where they live.

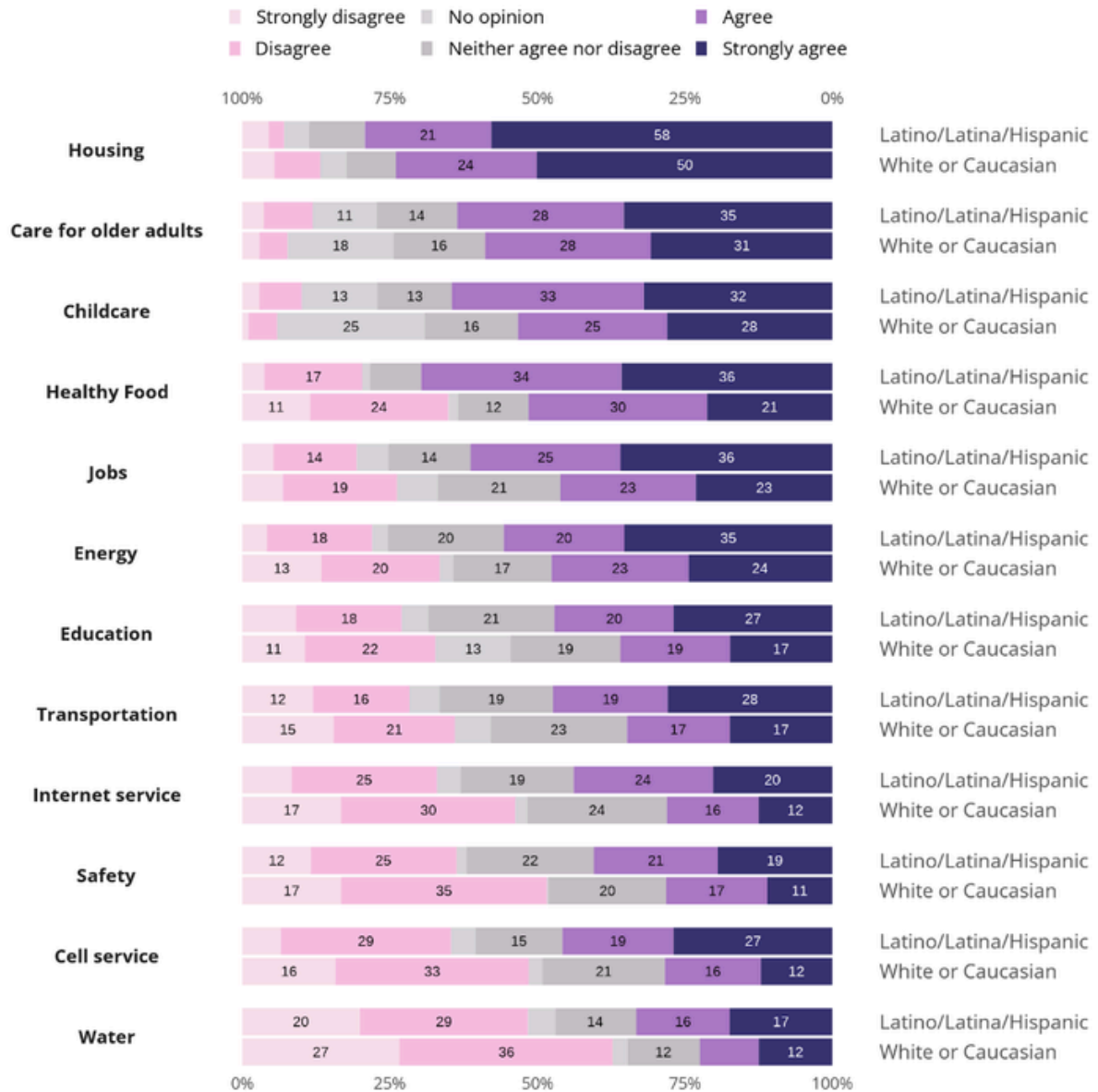


Percentages are rounded to the nearest whole number.

IE Latino Voters vs. IE White Voters



Figure 3: Percent of **Inland Empire Latino voters versus Inland Empire White Voters** indicating agreement that it is difficult to access essential resources or goods where they live.



Percentages are rounded to the nearest whole number.

IE Latino Voters vs. IE White Voters Poll Demographics



Figure 4: IE Latino and IE White respondents by Age

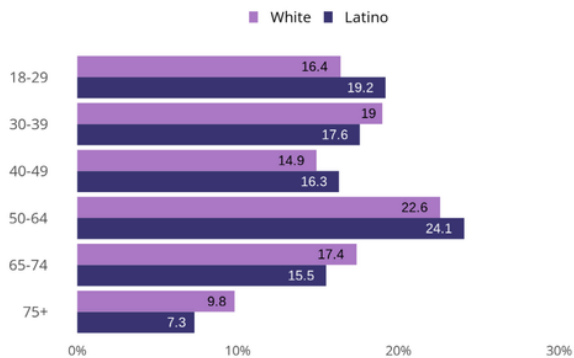


Figure 5: IE Latino and IE White respondents by Education

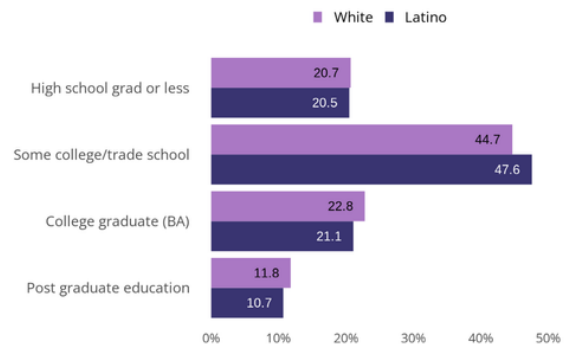


Figure 6: IE Latino and IE White respondents by Political Party

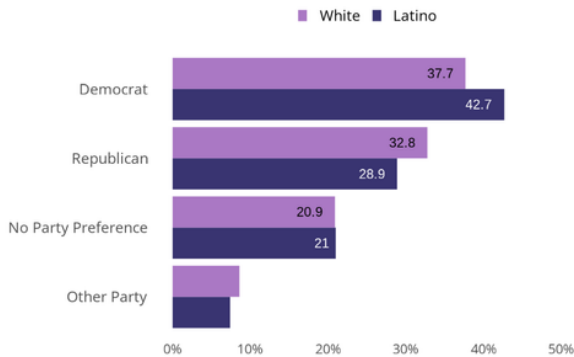
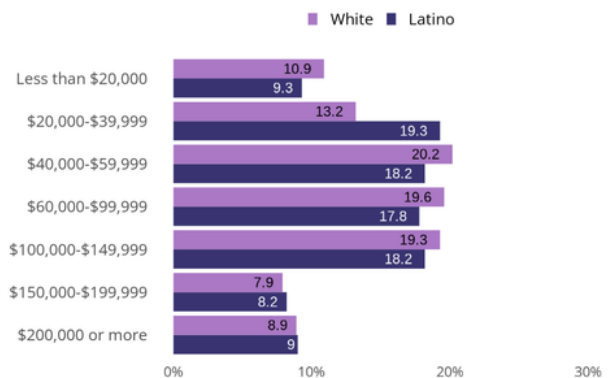


Figure 7: IE Latino and IE White respondents by Income



Percentages are rounded to the nearest whole number.

POSSIBILITY LAB

UNIVERSITY OF CALIFORNIA

possibilitylab.berkeley.edu