

UC Irvine

UC Irvine Previously Published Works

Title

Correction to: Disparities in early mortality among chronic kidney disease patients who transition to peritoneal dialysis and hemodialysis with and without catheters

Permalink

<https://escholarship.org/uc/item/3wb1h7cr>

Journal

International Urology and Nephrology, 51(2)

ISSN

0924-8455

Authors

Sim, John J
Zhou, Hui
Shi, Jiaxiao
[et al.](#)

Publication Date

2019-02-01

DOI

10.1007/s11255-018-2060-1

Copyright Information

This work is made available under the terms of a Creative Commons Attribution License, available at <https://creativecommons.org/licenses/by/4.0/>

Peer reviewed



Correction to: Disparities in early mortality among chronic kidney disease patients who transition to peritoneal dialysis and hemodialysis with and without catheters

John J. Sim¹ · Hui Zhou² · Jiaxiao Shi² · Sally F. Shaw² · Shayna L. Henry² · Csaba P. Kovcsdy³ · Kamyar Kalantar-Zadeh⁴ · Steven J. Jacobsen²

Published online: 2 January 2019
© Springer Nature B.V. 2019

Correction to:
International Urology and Nephrology
(2018) 50:963–971
<https://doi.org/10.1007/s11255-018-1837-6>

In the original publication, age stratified mortality rates were incorrectly added in Fig. 2. The correct Fig. 2 is given below.

The original article can be found online at <https://doi.org/10.1007/s11255-018-1837-6>.

✉ John J. Sim
John.j.sim@kp.org

- ¹ Division of Nephrology and Hypertension, Kaiser Permanente Los Angeles Medical Center, 4700 Sunset Bl, Los Angeles, CA, USA
- ² Department of Research and Evaluation, Kaiser Permanente Southern California, Pasadena, CA, USA
- ³ Division of Nephrology, University of Tennessee Health Science Center, Memphis, TN, USA
- ⁴ Division of Nephrology and Hypertension, University of California Irvine Medical Center, Irvine, CA, USA

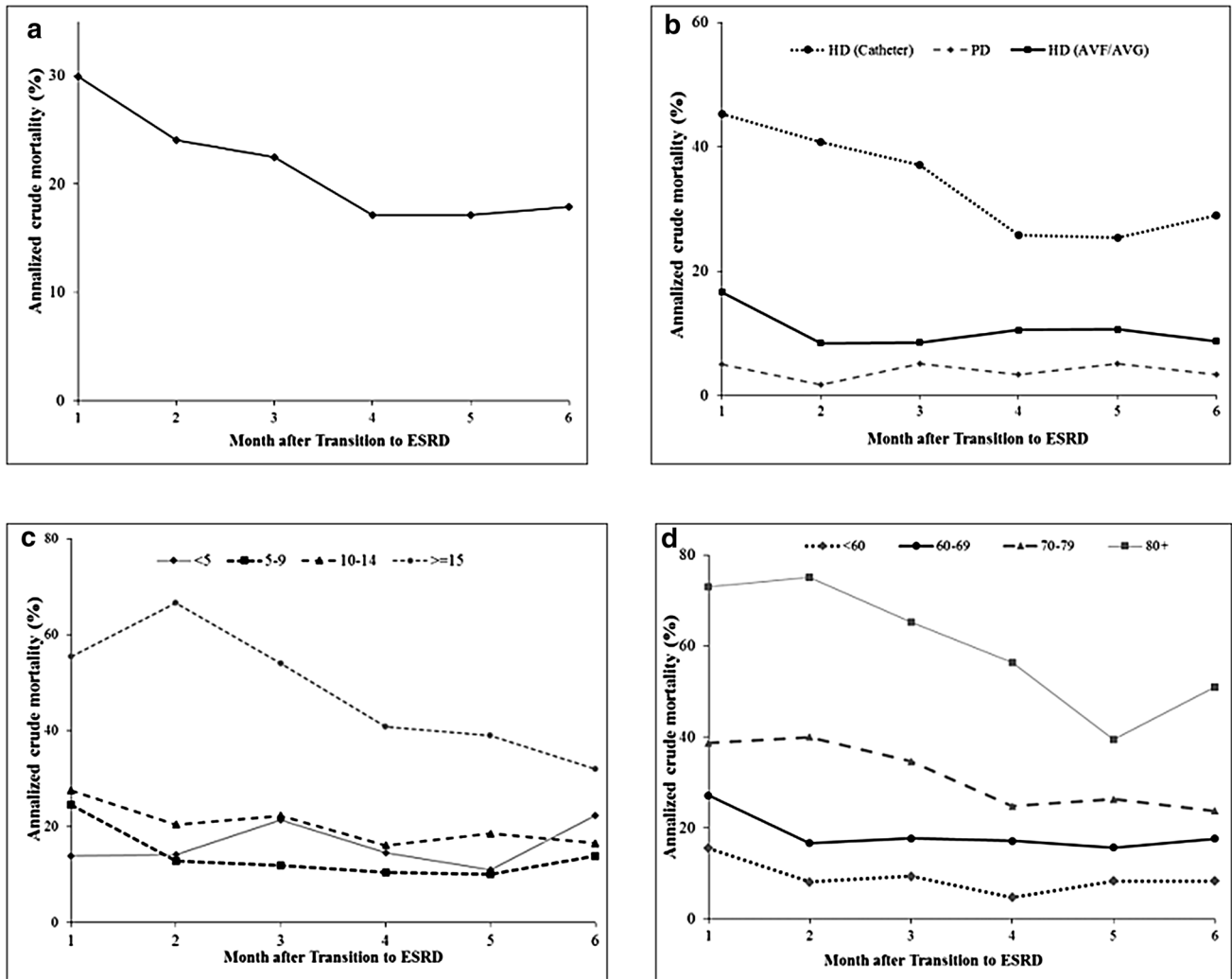


Fig. 2 Monthly mortality rates up to 24 months of follow-up are reported in deaths per 100 person-years. **a** Mortality rates for the entire ESRD transition population ($N = 5373$). **b** Mortality rates for hemodialysis with catheter (HD catheter), hemodialysis with AVF/AVG (HD-AVF/AVG) and peritoneal dialysis (PD) populations

separately not including transplant. **c** Mortality rates of the entire study cohort categorized by eGFR at transition (< 5 , $5-9$, $10-14$, and ≥ 15 ml/min/1.73 m²). **d** Mortality rates of the entire study cohort categorized by age (< 60 , $60-69$, $70-79$, and ≥ 80)