

# UC San Diego

## UC San Diego Previously Published Works

### Title

3.1 Å structure of yeast RNA polymerase II elongation complex stalled at a cyclobutane pyrimidine dimer lesion solved using streptavidin affinity grids

### Permalink

<https://escholarship.org/uc/item/3xx768x5>

### Journal

Journal of Structural Biology, 207(3)

### ISSN

1047-8477

### Authors

Lahiri, Indrajit  
Xu, Jun  
Han, Bong Gyoon  
[et al.](#)

### Publication Date

2019-09-01

### DOI

10.1016/j.jsb.2019.06.004

Peer reviewed



Published in final edited form as:

*J Struct Biol.* 2019 September 01; 207(3): 270–278. doi:10.1016/j.jsb.2019.06.004.

## 3.1Å structure of yeast RNA polymerase II elongation complex stalled at a cyclobutane pyrimidine dimer lesion solved using streptavidin affinity grids

Indrajit Lahiri<sup>1</sup>, Jun Xu<sup>2,#</sup>, Bong Gyoon Han<sup>3,#</sup>, Juntaek Oh<sup>2</sup>, Dong Wang<sup>1,2</sup>, Frank DiMaio<sup>4</sup>, Andres E Leschziner<sup>1,5,\*</sup>

<sup>1</sup>Department of Cellular and Molecular Medicine, University of California San Diego, La Jolla, CA, 92093, USA

<sup>2</sup>Division of Pharmaceutical Sciences, Skaggs School of Pharmacy & Pharmaceutical Sciences, University of California San Diego, La Jolla, CA, 92093, USA

<sup>3</sup>Molecular Biophysics and Integrated Bioimaging Division, Lawrence Berkeley National Laboratory, University of California, Berkeley, CA, 94720, USA

<sup>4</sup>Department of Biochemistry, University of Washington, Seattle, WA, 98195, USA

<sup>5</sup>Division of Biological Sciences, University of California San Diego, La Jolla, CA, 92093, USA

### Abstract

Despite significant advances in all aspects of single particle cryo-electron microscopy (cryo-EM), specimen preparation still remains a challenge. During sample preparation, macromolecules interact with the air-water interface, which often leads to detrimental effects such as denaturation or adoption of preferred orientations, ultimately hindering structure determination. Randomly biotinylating the protein of interest (for example, at its primary amines) and then tethering it to a cryo-EM grid coated with two-dimensional crystals of streptavidin (acting as an affinity surface) can prevent the protein from interacting with the air-water interface. Recently, this approach was successfully used to solve a high-resolution structure of a test sample, a bacterial ribosome. However, whether this method can be used for samples where interaction with the air-water interface has been shown to be problematic remains to be determined. Here we report a 3.1Å structure of an RNA polymerase II elongation complex stalled at a cyclobutane pyrimidine dimer lesion (Pol II EC(CPD)) solved using streptavidin grids. Our previous attempt to solve this structure using conventional sample preparation methods resulted in a poor quality cryo-EM map due to Pol II EC(CPD)'s adopting a strong preferred orientation. Imaging the same sample on

\*Corresponding author: aleschziner@ucsd.edu.

#Equal contribution

**Publisher's Disclaimer:** This is a PDF file of an unedited manuscript that has been accepted for publication. As a service to our customers we are providing this early version of the manuscript. The manuscript will undergo copyediting, typesetting, and review of the resulting proof before it is published in its final citable form. Please note that during the production process errors may be discovered which could affect the content, and all legal disclaimers that apply to the journal pertain.

#### Data accession

The locally filtered cryo-EM map of Pol II EC(CPD) has been deposited in the Electron Microscopy Data Bank (EMDB) with the accession number of EMD-0633. The atomic model corresponding to this map has been deposited in the Protein Data Bank (PDB) with the accession number 6O6C.

streptavidin grids improved the angular distribution of its view, resulting in a high-resolution structure. This work shows that streptavidin affinity grids can be used to address known challenges posed by the interaction with the air-water interface.

---

## Introduction

Single particle cryo-electron microscopy (cryo-EM) is quickly becoming the technique of choice for obtaining the structures of biological macromolecules at atomic or near-atomic resolutions (Nogales and Scheres, 2015). In this method, the sample is applied to an EM grid and excess liquid is blotted away, leaving a thin film of buffer containing the macromolecules. The grid is then rapidly frozen in a cryogen such that the thin buffer film vitrifies into amorphous ice with the macromolecules embedded in it. A recent study has shown that, in most cases, instead of being uniformly distributed in the thin layer of vitrified buffer, the macromolecules become adsorbed to the air-water interface (Noble et al., 2018a) indicating that prior to vitrification the macromolecules interact with the air-water interface of the thin film. This interaction can have detrimental consequences, including complete or partial denaturation of the sample or the adoption of preferred orientations by the macromolecules, ultimately hindering structure determination (Glaeser and Han, 2017).

Currently, there are three major approaches to prevent or minimize the exposure of samples to the air-water interface: (a) Including small molecule additives in the solution to alter its properties (Bernecky et al., 2016; Kang et al., 2017); (b) minimizing the time between thin film formation and vitrification (Noble et al., 2018b); and (c) adding an affinity tag to the macromolecule to “tether” it to an affinity surface, keeping it away from the air-water interface (Han et al., 2012; Kelly et al., 2010; Sharma et al., 2013). While the first approach has been used successfully in many cases, its effectiveness is dependent on the nature of the sample, and its implementation requires extensive optimization. The second approach, speeding up the vitrification process, is very promising but it is a relatively new technique still under development (Dandey et al., 2018). The affinity-tagging approach has the potential for reproducibly preventing proteins from reaching the air-water interface and could easily be applied to a wide variety of macromolecules (Crucifix et al., 2004; Han et al., 2012). Genetically-encoded affinity tags are limiting for this approach; placing the tag in a particular location restricts the orientations the sample can adopt on the affinity support, negatively affecting structure determination. This issue can be circumvented by randomly tagging the protein, such as with biotin. The randomly biotinylated protein can then be attached to a streptavidin monolayer affinity grid (Han et al., 2012). The feasibility of tethering biotinylated macromolecules to monolayer streptavidin crystal affinity grids was shown almost thirty years ago (Darst et al., 1991). More recently, this approach was successfully used to solve a near-atomic resolution structure of a bacterial ribosome (Han et al., 2016). However, it remained to be determined whether streptavidin affinity grids could be used to solve high-resolution structures of samples where interaction with the air-water interface had been shown to be problematic.

We have used streptavidin grids to solve the structure of a randomly biotinylated yeast RNA polymerase II elongation complex stalled at a cyclobutane pyrimidine dimer (CPD) lesion

(Pol II EC(CPD)) to 3.1Å. The same sample had displayed a strong orientation bias when applied to holey carbon grids (both with and without an additional carbon or graphene support), severely limiting the attainable resolution (Xu et al., 2017). The present study shows that streptavidin affinity grids can be used to overcome a known preferred orientation problem, enabling structure determination to high resolution.

## Methods

### **Purification and biotinylation of Pol II Elongation Complex arrested at a CPD lesion (Pol II EC(CPD)):**

We purified *S. cerevisiae* 12-subunit Pol II and formed a CPD-arrested elongation complex as previously described (Xu et al., 2017). After forming the elongation complex (EC) we dialyzed it into buffer A (40mM HEPES (pH7.5), 5mM MgCl<sub>2</sub>, 40mM KCl, 5mM DTT). For biotinylation of Pol II EC(CPD), we added 25-fold excess of biotin-labeling reagent (ChromaLink Biotin, Trilink, USA) to the sample and incubated the reaction for 2h at room temperature. We stopped the reaction by adding Tris-Cl (pH 7.5) to a final concentration of 50mM. We removed excess unreacted biotin by dialyzing the sample overnight against buffer A. To test the crosslinking efficiency, we incubated the Pol II EC(CPD) (with and without biotin crosslinking) with 2µl streptavidin magnetic beads (NEB, USA) for 30 min at room temperature (Figure 1A). The beads were then pelleted using a magnetic stand and the supernatant, containing Pol II EC(CPD) not bound to the streptavidin beads, was run on a 4.5% native polyacrylamide gel in TBE buffer (pH 8.0) with 2mM MgCl<sub>2</sub> for 2.5h at 4 °C and stained with Gel-red (Figure 1B). We determined the extent of biotinylation based on the relative intensities of the Pol II EC(CPD) bands between the experiment and no-bead control. Based on these calculations ~ 30% of Pol II EC(CPD) was biotinylated. After biotinylation the sample was dialyzed in buffer A to remove free biotin reagent.

### **Electron microscopy sample preparation and imaging:**

We applied a streptavidin crystal monolayer to Quantifoil R2/2 grids (gold grids with carbon foil) as previously described (Han et al., 2016). Briefly, we added a layer of biotinylated lipid (1,2-dipalmitoyl-sn-glycero-3-phosphoethanolamine-N-(cap biotinyl), from Avanti Polar Lipids, USA) to Quantifoil R2/2 gold grids (Quantifoil, Germany) followed by 4µl of streptavidin (NEB, USA) at a concentration of 0.25 mg/ml. The grids were then incubated in a high humidity chamber for 30 minutes and then the excess streptavidin was washed with wash buffer (10 mM HEPES (pH 7.5), 50 mM KCl and 10% trehalose). Once the buffer dried, the trehalose acted as a protective layer for the streptavidin crystal. After this we deposited a thin layer of carbon on the back surface (away from the streptavidin monolayer crystal) of the grids and store them in a desiccator. The protective trehalose coating was removed by washing the grids with rehydration buffer (50mM HEPES (pH 7.5), 150mM KCl, 5mM EDTA) just prior to sample application. We applied 4µl of 300 nM Pol II EC(CPD) (where an estimated 30% of the sample is biotinylated) to the affinity grid and incubated it in a high humidity chamber for 10 minutes. Unbound sample was washed with Buffer A and then we used a Vitrobot (FEI) to blot away excess sample and plunge freeze the grid in liquid ethane. The blotting was performed as previously described (Han et al., 2016). Briefly, the Vitrobot was operated at 20°C and 100% humidity. To ensure

reproducible blotting, after putting the grid (now containing biotinylated sample tethered to the streptavidin layer and excess Buffer A) inside the Vitrobot, we manually wicked excess Buffer A. We then added an additional 1.2  $\mu\text{l}$  Buffer A to the grid (to ensure good contact of the grid with the Vitrobot blotting pads), blotted and plunge froze the grids in liquid ethane. The grids were stored in liquid nitrogen until imaged.

For negative stain EM we used a JEM-1200EX (JEOL) TEM for imaging. The microscope was operated at 120 kV with a nominal magnification of 32,000x corresponding to an object-level pixel size of 4.3 $\text{\AA}$ . For cryo-EM we imaged the grids in a Talos Arctica (FEI) operated at 200 kV, equipped with a K2 Summit direct detector (Gatan). Automated data collection was performed using Legion (Suloway et al., 2005). We recorded 1,800 movies in ‘counting mode’ at a dose rate of 11.6 electrons  $\text{pixel}^{-1} \text{s}^{-1}$  with a total exposure time of 6s sub-divided into 150ms frames, for a total of 40 frames. The images were recorded at a nominal magnification of 36,000x resulting in an object-level pixel size of 1.16 $\text{\AA}$ . The defocus range of the data was  $-0.5\mu\text{m}$  to  $-3.5\mu\text{m}$ .

### Image processing:

We aligned the movie frames using UCSF MotionCor2 (Zheng et al., 2017) as implemented in Relion 3.0 (Zivanov et al., 2018), using the dose-weighted frame alignment option. We removed the signal for the streptavidin lattice from the aligned micrographs using Fourier filtering as described before (Han et al., 2012). Briefly, we identified the pixels in the power spectrum of a micrograph with intensities above a user-defined threshold. Then we replaced each of those pixels with random intensities whose average was that of the background at the same radius in the power spectrum as that of the given spot. The scripts used for Fourier filtering are available at the accompanying Mendeley data site <http://dx.doi.org/10.17632/k2g2p5z9x6.2>. The micrographs were then inspected and the unsuitable ones (having defects like broken carbon, crystalline ice or too thick or thin an ice layer) were discarded, leaving 1200 micrographs for further processing. We estimated CTF on the non-dose-weighted micrographs using GCTF version 1.06 (Zhang, 2016) as implemented in Appion (Lander et al., 2009) and micrographs having a 0.5 confidence resolution for the CTF fit worse than 4.5 $\text{\AA}$  (as determined in Appion) were excluded from further processing. Using this approach, 1,200 micrographs were kept for further processing. We selected particles from the micrographs using FindEM (Roseman, 2004) with projections of a previously reported map of a Pol II EC (EMDB 8737) (Xu et al., 2017) filtered to 20 $\text{\AA}$  serving as references. Particle picking was performed within the framework of Appion.

We carried out all subsequent processing in Relion 3.0 installed in Amazon Web Services (Cianfrocco et al., 2018; Cianfrocco and Leschziner, 2015). Two-dimensional classification was performed to identify and remove ‘bad’ particles. Only those particles that contributed to ‘good’ 2D class averages were used for further processing. Following 2D classification, we performed a 3D classification and 61,654 particles contributing to the class showing good overall density and characteristic structural features of Pol II EC (for instance, the bridge helix) were selected for refinement against a Pol II EC model (PDB accession 1Y77) (Kettenberger et al., 2004), which had been low pass filtered to 60 $\text{\AA}$ . We performed the 2D and initial 3D classifications using binned data (3.9 $\text{\AA} \text{pixel}^{-1}$ ) and all subsequent steps using

unbinned images ( $1.16\text{\AA pixel}^{-1}$ ). The classification and refinement scheme are shown in Figure S2. After the consensus refinement, we estimated CTF for each particle and beam tilt for each micrograph. We performed an additional round of refinement using the per-particle CTFs and the beam tilt parameters. The resolution of the cryo-EM map was estimated from Fourier Shell Correlation (FSC) curve calculated in Relion and is reported according to the 0.143 cutoff criterion (Henderson et al., 2012; Scheres and Chen, 2012). The FSC curve was corrected for the convolution effects of a soft mask applied to the half maps by high-resolution phase randomization (Chen et al., 2013). For display and analysis purposes, we sharpened the map with an automatically estimated negative B factor as implemented in the 'post-process' routine of Relion. We calculated 3D FSC using 3dfsc version 2.5 (Tan et al., 2017) using the half-maps and the mask used for the post-process routine in Relion. Unbending of the streptavidin crystal lattice in the micrographs was performed as described previously (Han et al., 2016) using the 2dx software package (Gipson et al., 2007). The first observed lattice spots (1,1 or -1,1) correspond to an approximate resolution of  $57\text{\AA}$ . We used Rosetta and Phenix (Adams et al., 2010; DiMaio et al., 2015; Song et al., 2013; Wang et al., 2016) to build the atomic model of Pol II EC(CPD) in our cryo-EM map following a previously described procedure (Xu et al., 2017). All figures and difference maps were generated using UCSF Chimera (Pettersen et al., 2004) and PyMOL (version 2.0 Schrödinger, LLC). The EM maps were segmented using Seggar (Pintilie et al., 2010) as implemented in UCSF Chimera. The electrostatic surface of Pol II was calculated using the APBS plugin (Baker et al., 2001; Dolinsky et al., 2004) in PyMOL.

#### Estimation of solvent accessibility of amines:

We estimated the solvent exposed surface area (SASA) of the amines using the LeGrand and Merz method (Le Grand and Merz, 1993) as implemented in Rosetta. Since the stalk region was disordered in our Pol II EC(CPD) structure, the corresponding atomic model does not include rpb4 and rpb7, the two Pol II subunits that form it. Therefore, to take into account the amino acids of rpb4 and rpb7 we used a previously reported atomic model of a Pol II elongation complex (Pol II EC) (PDB ID: 1Y77) (Kettenberger et al., 2004) for calculating SASA. Following sidechain rotamer optimization, solvent accessibility calculations were performed on all protein amine groups using a range of probe radii (1.0, 1.4, 1.8, 2.2, 3.0, and  $4.0\text{\AA}$ ) to get 6 different accessibility values per target. We subsequently averaged these values to yield a single accessibility value. We performed this calculation only for the amine nitrogen and attached hydrogens (by considering only the surface points corresponding to these particular atoms). Averaging over a range of probe radii allows for softness in the calculation, making measurements less sensitive to small movements in amine groups or other nearby atoms, and a higher density of sampling near water radii values ensure those probe sizes dominate the average. We have implemented a sub-routine in Rosetta for this calculation (will be available from Rosetta 2019.10) and the instructions and scripts for executing this routine are provided in the accompanying Mendeley data site <http://dx.doi.org/10.17632/k2g2p5z9x6.2>.

## Results and Discussion

### Biotinylation of an RNA Polymerase II elongation complex arrested at a DNA lesion

We first tested whether we could efficiently biotinylate an RNA Polymerase II (“Pol II”) Elongation Complex (“Pol II EC”) arrested at a cyclobutane pyrimidine dimer (“CPD”) DNA lesion (“Pol II EC(CPD)”). We incubated Pol II EC(CPD) with the biotinylation reagent (Figure 1A), followed by an incubation with streptavidin magnetic beads. We removed the beads and analyzed the unbound fraction (Figure 1A) using native PAGE (Figure 1B). The unbound fraction represents the Pol II EC(CPD) that was not biotinylated. Based on the band intensities in the biotinylated and negative control (no biotinylation reagent added) samples we estimated that ~30% of the complexes were biotinylated (Figure 1B). Assuming a Poisson distribution, 30% biotinylation should result in mono-biotinylated Pol II EC(CPD) being the most abundant biotinylated species. We could obtain good particle density after incubating 4 $\mu$ l of 300nM Pol II EC(CPD) on the streptavidin grids for ~10 minutes (Figure 1C, bottom panel). Given the extent of biotinylation in our reaction, this corresponds to 90nM of biotinylated Pol II EC(CPD). The high particle density was dependent on the presence of the streptavidin crystal; when we applied the same biotinylated sample to a continuous-carbon grid and the grid was subsequently washed to remove unbound complex, we detected very few particles in the micrographs (Figure 1C, top panel). As has been shown before (Darst et al., 1991; Han et al., 2012) the concentrating effect of the streptavidin grids is a major advantage of this approach.

### A 3.1Å structure of randomly biotinylated Pol II EC(CPD) on streptavidin monolayer grids

We prepared cryo-EM grids using a Vitrobot (FEI) with an additional manual wicking step as previously described (Han et al., 2016), and imaged them using a Talos Arctica (FEI). Using this approach, we could record images of Pol II EC(CPD) with good ice thickness showing good particle distribution over a background of uniform streptavidin crystal lattice (Figure 2A–C). We found that more than 90% of the micrographs had a monolayer crystal of streptavidin, consistent with previous reports (Han et al., 2016). We removed the signal from the streptavidin crystal lattice by Fourier filtering (Figure 2D and E), and following 2D and 3D classifications we (Figure S2) identified a homogeneous subset of 61,654 particles, which, after refinement resulted in a 3.1Å map (based on the 0.143 cutoff of the FSC curve calculated in Relion) (Figures 3A and 4A). Although all 12 subunits of Pol II were present in our sample, the rpb4/7 stalk module was disordered in our EM map. The local resolution of the map showed that most of the complex was well resolved, with some parts, including the active site, having resolutions better than 3Å (Figure 3E). As has been seen in other Pol II EC structures (Bernecky et al., 2016; Liu et al., 2018; Xu et al., 2017) the flexible jaw domain showed the worst local resolution (Figure 3E). Even in this region we could trace the secondary structural elements in the unsharpened map (Figure S3). We could easily identify densities for many of the amino acid sidechains and nucleotides as well as for the CPD lesion (Figures 3B–D and G). To the best of our knowledge, the map presented here is the highest resolution cryo-EM structure of a Pol II transcription complex along with EMDB entries 0031 and 0036 (Vos et al., 2018), both of which were obtained using data collected in a Titan Krios.

It has been shown before that the quality of the streptavidin monolayer crystals could be used as a criterion for selecting particles that result in structures with improved resolution (Han et al., 2017). In our hands, this approach did not improve the map (Figure 2F). A possible reason might be the relatively small number of particles that were selected after 3D classification for the final reconstruction; additional selection based on the monolayer crystal quality further reduced the number of particles, likely offsetting the advantages provided by the selection. The results reported here show that even without considering the monolayer crystal quality, streptavidin affinity grids provide a robust approach to overcome the preferred orientation problem and solve structures of biological macromolecules to high resolution.

### Using streptavidin affinity grids increased the distribution of Pol II EC(CPD) views

The Pol II EC(CPD) map reported here has significantly higher resolution and lower anisotropy than our previously published structure of the same complex solved over open holes (EMDB 8885) (Xu et al., 2017). The current structure has an overall resolution of 3.1Å and a sphericity value (Tan et al., 2017) of 0.844 (Figure 4A) while our previous map had a resolution of 10Å and a sphericity of 0.676. (Although we had binned the images to a pixel size of 4.8Å for our previous structure, using a smaller pixel size did not improve the quality of the map). Moreover, while a comparable number of particles contributed to both structures (51,119 particles for the older structure and 61,654 particles for the current one), the current structure required much less data processing. To generate our previous map, we performed extensive 2D and 3D classifications to remove the preferred views from a dataset of 800,000 particles selected after the initial round of 2D classification. In contrast, for the current structure we selected 350,000 particles after a single round of 2D classification, and after only one additional round of 3D classification (Figure S2) we identified the homogeneous subset of 61,654 particles that yielded an isotropic 3.1Å-resolution map. In the present case, we did not have to remove overrepresented views from the dataset and the improvement in resolution was mainly due to a more uniform Euler angle distribution of the particles (Figure 4B)

Despite the lower anisotropy of the map reported here (Figure 4A,B), certain views were still dominant (Figure 4B). One possible explanation for this observation could be the non-uniform distribution of surface-exposed lysines, which might in turn result in an uneven distribution of biotinylated sites on the Pol II EC(CPD). This can lead a non-uniform distribution of tethered Pol II EC(CPD) particle orientation on the streptavidin monolayer crystal. Furthermore, given the finite length of the biotin+linker moiety, some biotinylated lysines may be found in cavities where they cannot reach the streptavidin monolayer crystal. To test whether these two factors could explain the uneven distribution of views we observed, we calculated the solvent accessible surface area (SASA) of each lysine residue's primary amine. Indeed, we found that those surfaces of Pol II that face the streptavidin crystal in the preferred views contain a larger number of lysine residues with high SASA relative to those representing rare views (Figures 4C and D). This correlation is even more pronounced when we only consider those residues whose biotin moiety would be physically capable of reaching the streptavidin monolayer (Figure 4C and E). For instance, the surface of Pol II corresponding to the rare view shown in Figure 4C (top panel) has ~19 surface



exposed lysines with an average SASA of  $7\text{\AA}^2$  (Figure 4E, top) while the surface for the common view in Figure 4C (bottom panel) has ~31 surface exposed lysines with an average SASA of  $11.5\text{\AA}^2$  (Figure 4E, bottom).

### The CPD lesion at the active site induces Pol II backtracking but does not distort the downstream DNA

The structure presented here is largely in agreement with a crystallographic structure of Pol II EC(CPD) (PDB ID: 2JA6) reported by Brueckner et al. with an overall R.M.S.D of  $1.1\text{\AA}$  (Figure 5A) (Brueckner et al., 2007). As previously reported, we found that the CPD lesion in our structure occupied a position one nucleotide downstream of its expected location (Figure 3F). We designed our scaffold for the CPD lesion to occupy positions +1 and +2, with +1 being the position of the templating base (Figure 3F top panel). However, in our structure we found that Pol II had backtracked by one nucleotide, placing the CPD lesion at positions +2 and +3, downstream of the bridge helix (Figures 3F bottom panel and G). The backtracking leads to a loss of base pairing between the +1 dTMP and the 3' terminal AMP of the RNA transcript (Figure 3F, bottom panel and G). In fact, we could only detect very fragmented density for the AMP.

A major difference between our structure and that from Brueckner et al. is in the downstream DNAs, where their paths diverge by  $\sim 28^\circ$  (Figure 5B and C). Unlike Brueckner et al.'s structure, ours matches well those of other Pol II EC structures containing undamaged transcription scaffolds (Figure 5D), despite the well-documented local deformation induced by the CPD lesion (Park et al., 2002). Given that the downstream DNA used by Brueckner et al. was 4 base-pairs shorter than ours, it is possible that it was unable to interact with Pol II in ways that would otherwise compensate for the CPD-induced distortions and maintain its canonical location. In fact, there is an interaction in our structure between the downstream DNA and a region of positive charge in the clamp domain distal from the active site (Figure 5E and F); this interaction could not take place with the shorter downstream DNA used by Brueckner et al. (Figure 5G).

### Conclusions

The  $3.1\text{\AA}$  structure of a *Saccharomyces cerevisiae* RNA polymerase II elongation complex stalled at a CPD lesion (Pol II EC(CPD)) presented here shows that streptavidin monolayer affinity grids ("streptavidin grids") can be used to overcome the preferred orientation problem and solve high resolution cryo-EM structures of biological macromolecules. Our previous structure of Pol II EC(CPD), obtained using holey carbon grids, was severely limited in resolution due to the particles adopting strongly preferred orientations (Xu et al., 2017). We could not remove this bias by using grids coated with a graphene oxide support layer or by adding BS3, a cross-linker additive that has helped overcome the preferred orientation problem for certain Pol II transcription complexes (Bernecky et al., 2016; Ehara et al., 2017) (data not shown). In contrast, we obtained the  $3.1\text{\AA}$  structure presented here from the first streptavidin grid we screened. So far, we have used streptavidin grids for three samples in our laboratory (including the one reported here) and our experience in all three cases has been similar. In every instance, samples imaged using these grids led to high-

resolution (from 3Å to 3.8Å), isotropic (sphericity ranging from 0.844 to 0.95) structures of macromolecular complexes for which previous cryo-EM structure determination efforts were severely hindered due to strongly preferred orientations (Figure 4A and data not shown).

We found the streptavidin grids to be very robust in terms of mechanical stability and grid handling procedures and suitable for routine cryo-EM experiments. Moreover, in our hands the random biotinylation of Pol II EC(CPD) did not disrupt the stability of the complex. An additional advantage of this method is its ability to concentrate the sample on the cryo-EM grid, making it particularly attractive for low abundance samples. For biotinylating Pol II EC(CPD), we followed the original protocol described by Han and colleagues (Han et al., 2016) with one exception. In the original protocol the unreacted biotin was removed by size-exclusion chromatography (SEC) using a 1mL S300 Sephacryl spin column (GE Healthcare). We found that eluting 100% of the Pol II EC(CPD) from the S300 column was challenging and thus used dialysis to remove the unreacted biotin. However, the SEC approach is faster and thus might be more suitable for labile, time-sensitive samples.

Consistent with a previous report, we found that for a biotinylated sample applied to a streptavidin grid the particle orientation is not uniformly distributed (Han et al., 2016). Our results suggest that the particle distribution positively correlates with the distribution of surface exposed lysines (the amino acid residues to which the biotin moieties are attached) and with the ability of biotinylated lysines to reach the streptavidin surface. For known structures, calculating the solvent exposed surface area (SASA) of the lysines might provide a qualitative indication of whether the sample will adopt orientations on a streptavidin grid that were absent from data collected using other approaches. To this end we have added a module to Rosetta (will be available from Rosetta 2019.10 onwards) for calculating lysine SASA. The user can perform this calculation as long as some model of the complex under consideration is available.

After biotinylating Pol II EC(CPD) we tried to directly detect the biotinylated lysines using mass spectrometry. We performed a proteolytic digestion of the sample with trypsin and then detected the resulting peptides using an electrospray ionization mass spectrometer (mass spec). Despite a 30% biotinylation efficiency, we could not detect any biotinylated lysines using this approach (data not shown). During trypsin proteolysis the peptide bond C-terminal to a lysine or arginine residue gets cleaved. However, a biotinylated lysine might not be recognized as a trypsin cleavage site due to the modified charge of the amino acid. Accordingly, the tryptic fragments containing the biotinylated lysines might be larger than the size range suitable for detection using mass spec.

In conclusion, compared to the currently available cryo-EM sample preparation approaches for preventing a protein from interacting with the air-water interface, we find the streptavidin grids to be a robust, efficient and reproducible method that can be used with different samples with minimal optimization. This method should help in speeding up high resolution structure determination by overcoming the detrimental effects of the air-water interface.

## Supplementary Material

Refer to Web version on PubMed Central for supplementary material.

## Acknowledgements

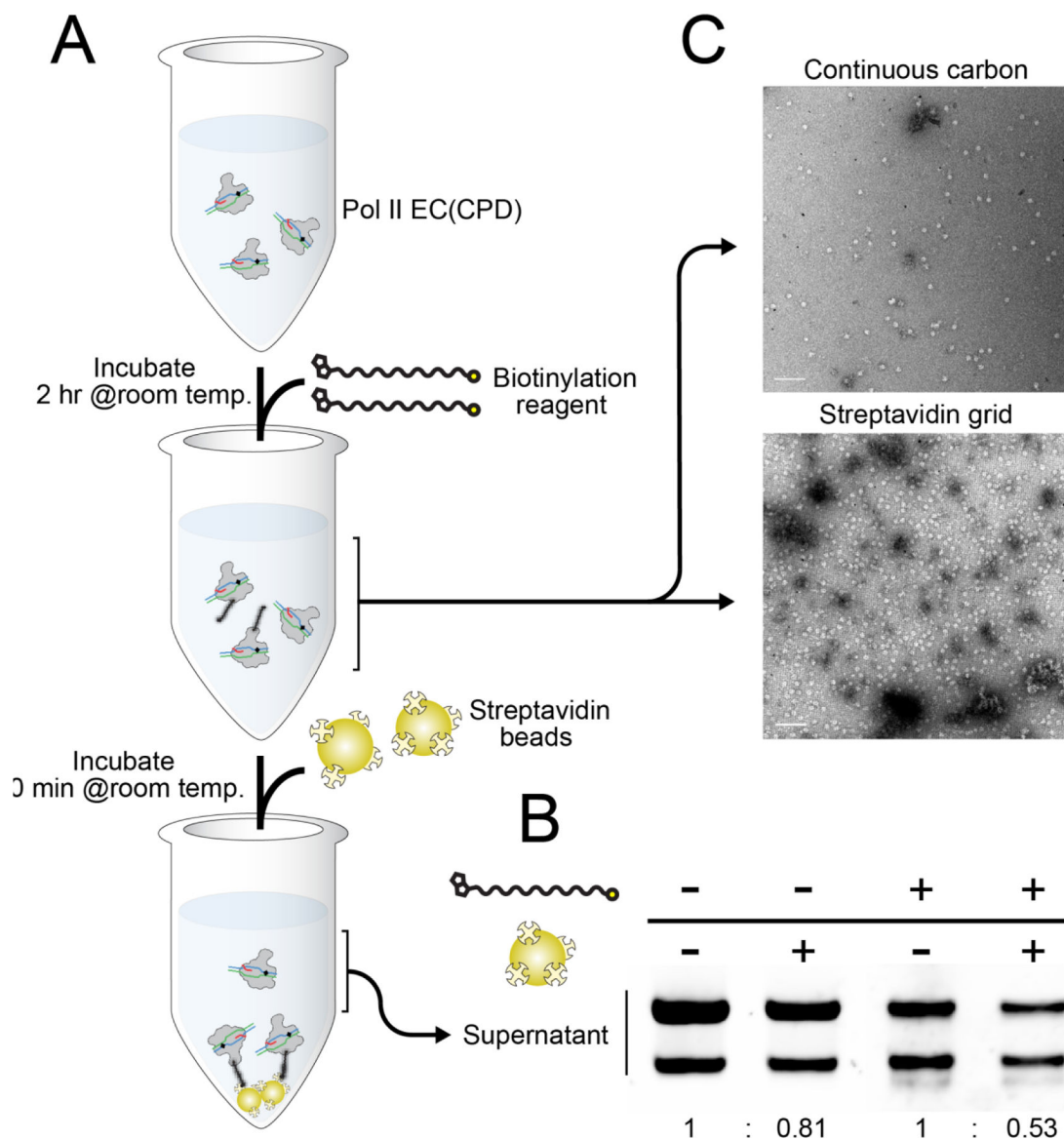
We thank Robert M Glaeser (UC Berkeley) for his advice and support throughout this project. We also thank the UC San Diego Cryo-EM Facility, the UC San Diego Physics Computing Group and the UC San Diego Biomolecular & Proteomics Mass Spectrometry Facility. This work was partially supported by NIH grants 2R01GM092895 and 2R01GM107214 (A.E.L.); R01GM102362 (D.W.); R01GM123089 (F.D.), and P01GM051487 (Robert M. Glaeser).

## Bibliography

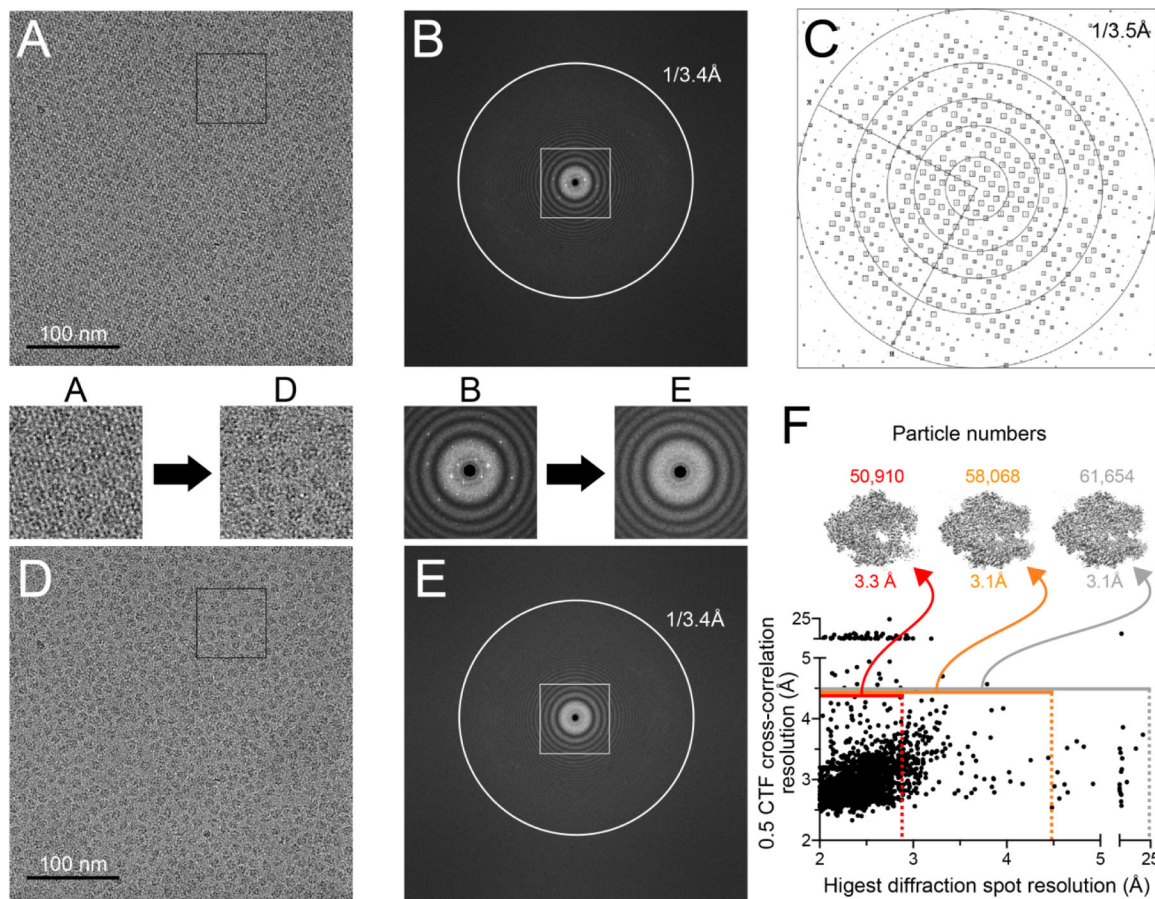
- Adams PD, Afonine PV, Bunkóczi G, Chen VB, Davis IW, Echols N, Headd JJ, Hung L-W, Kapral GJ, Grosse-Kunstleve RW, McCoy AJ, Moriarty NW, Oeffner R, Read RJ, Richardson DC, Richardson JS, Terwilliger TC, Zwart PH, 2010 PHENIX: a comprehensive Python-based system for macromolecular structure solution. *Acta Crystallogr. Sect. D, Biol. Crystallogr* 66, 213–221. doi: 10.1107/S0907444909052925 [PubMed: 20124702]
- Baker NA, Sept D, Joseph S, Holst MJ, McCammon JA, 2001 Electrostatics of nanosystems: application to microtubules and the ribosome. *Proc. Natl. Acad. Sci. USA* 98, 10037–10041. doi: 10.1073/pnas.181342398 [PubMed: 11517324]
- Bernecky C, Herzog F, Baumeister W, Plitzko JM, Cramer P, 2016 Structure of transcribing mammalian RNA polymerase II. *Nature* 529, 551–554. doi:10.1038/nature16482 [PubMed: 26789250]
- Brueckner F, Hennecke U, Carell T, Cramer P, 2007 CPD damage recognition by transcribing RNA polymerase II. *Science* 315, 859–862. doi:10.1126/science.1135400 [PubMed: 17290000]
- Chen S, McMullan G, Faruqi AR, Murshudov GN, Short JM, Scheres SHW, Henderson R, 2013 High-resolution noise substitution to measure overfitting and validate resolution in 3D structure determination by single particle electron cryomicroscopy. *Ultramicroscopy* 135, 24–35. doi: 10.1016/j.ultramic.2013.06.004 [PubMed: 23872039]
- Cianfrocco MA, Lahiri I, DiMaio F, Leschziner AE, 2018 cryoem-cloud-tools: A software platform to deploy and manage cryo-EM jobs in the cloud. *J. Struct. Biol* 203, 230–235. doi:10.1016/j.jsb.2018.05.014 [PubMed: 29864529]
- Cianfrocco MA, Leschziner AE, 2015 Low cost, high performance processing of single particle cryo-electron microscopy data in the cloud. *Elife* 4. doi:10.7554/eLife.06664
- Crucifix C, Uhring M, Schultz P, 2004 Immobilization of biotinylated DNA on 2-D streptavidin crystals. *J. Struct. Biol* 146, 441–451. doi:10.1016/j.jsb.2004.02.001 [PubMed: 15099585]
- Dandey VP, Wei H, Zhang Z, Tan YZ, Acharya P, Eng ET, Rice WJ, Kahn PA, Potter CS, Carragher B, 2018 Spotiton: New features and applications. *J. Struct. Biol* 202, 161–169. doi:10.1016/j.jsb.2018.01.002 [PubMed: 29366716]
- Darst SA, Ahlers M, Meller PH, Kubalek EW, Blankenburg R, Ribí HO, Ringsdorf H, Kornberg RD, 1991 Two-dimensional crystals of streptavidin on biotinylated lipid layers and their interactions with biotinylated macromolecules. *Biophys. J* 59, 387–396. doi:10.1016/S0006-3495(91)82232-9 [PubMed: 1901232]
- DiMaio F, Song Y, Li X, Brunner MJ, Xu C, Conticello V, Egelman E, Marlovits T, Cheng Y, Baker D, 2015 Atomic-accuracy models from 4.5-Å cryo-electron microscopy data with density-guided iterative local refinement. *Nat. Methods* 12, 361–365. doi:10.1038/nmeth.3286 [PubMed: 25707030]
- Dolinsky TJ, Nielsen JE, McCammon JA, Baker NA, 2004 PDB2PQR: an automated pipeline for the setup of Poisson-Boltzmann electrostatics calculations. *Nucleic Acids Res* 32, W665–7. doi: 10.1093/nar/gkh381 [PubMed: 15215472]
- Ehara H, Yokoyama T, Shigematsu H, Yokoyama S, Shirouzu M, Sekine S-I, 2017 Structure of the complete elongation complex of RNA polymerase II with basal factors. *Science* 357, 921–924. doi:10.1126/science.aan8552 [PubMed: 28775211]

- Gipson B, Zeng X, Zhang ZY, Stahlberg H, 2007 2dx--user-friendly image processing for 2D crystals. *J. Struct. Biol* 157, 64–72. doi:10.1016/j.jsb.2006.07.020 [PubMed: 17055742]
- Glaeser RM, Han B-G, 2017 Opinion: hazards faced by macromolecules when confined to thin aqueous films. *Biophys. Rep* 3, 1–7. doi:10.1007/s41048-016-0026-3 [PubMed: 28781996]
- Han B-G, Walton RW, Song A, Hwu P, Stubbs MT, Yannoni SM, Arbeláez P, Dong M, Glaeser RM, 2012 Electron microscopy of biotinylated protein complexes bound to streptavidin monolayer crystals. *J. Struct. Biol* 180, 249–253. doi:10.1016/j.jsb.2012.04.025 [PubMed: 22584152]
- Han B-G, Watson Z, Cate JHD, Glaeser RM, 2017 Monolayer-crystal streptavidin support films provide an internal standard of cryo-EM image quality. *J. Struct. Biol* 200, 307–313. doi:10.1016/j.jsb.2017.02.009 [PubMed: 28259651]
- Han B-G, Watson Z, Kang H, Pulk A, Downing KH, Cate J, Glaeser RM, 2016 Long shelf-life streptavidin support-films suitable for electron microscopy of biological macromolecules. *J. Struct. Biol* 195, 238–244. doi:10.1016/j.jsb.2016.06.009 [PubMed: 27320699]
- Henderson R, Baldwin JM, Downing KH, Lepault J, Zemlin F, 1986 Structure of purple membrane from halobacterium halobium: recording, measurement and evaluation of electron micrographs at 3.5 Å resolution. *Ultramicroscopy* 19, 147–178. doi:10.1016/0304-3991(86)90203-2
- Henderson R, Sali A, Baker ML, Carragher B, Devkota B, Downing KH, Egelman EH, Feng Z, Frank J, Grigorieff N, Jiang W, Ludtke SJ, Medalia O, Penczek PA, Rosenthal PB, Rossmann MG, Schmid MF, Schröder GF, Steven AC, Stokes DL, Westbrook JD, Wriggers W, Yang H, Young J, Berman HM, Chiu W, Kleywegt GJ, Lawson CL, 2012 Outcome of the First Electron Microscopy Validation Task Force Meeting. *Structure* 20, 205–214. doi:10.1016/j.str.2011.12.014 [PubMed: 22325770]
- Kang C, Gwon S, Song C, Kang PM, Park S-C, Jeon J, Hwang DW, Lee D, 2017 Fibrin-Targeted and H2O2-Responsive Nanoparticles as a Theranostics for Thrombosed Vessels. *ACS Nano* 11, 6194–6203. doi:10.1021/acsnano.7b02308 [PubMed: 28481519]
- Kelly DF, Dukovski D, Walz T, 2010 Strategy for the use of affinity grids to prepare non-His-tagged macromolecular complexes for single-particle electron microscopy. *J. Mol. Biol* 400, 675–681. doi:10.1016/j.jmb.2010.05.045 [PubMed: 20562026]
- Kettenberger H, Armache K-J, Cramer P, 2004 Complete RNA polymerase II elongation complex structure and its interactions with NTP and TFIIS. *Mol. Cell* 16, 955–965. doi:10.1016/j.molcel.2004.11.040 [PubMed: 15610738]
- Lander GC, Stagg SM, Voss NR, Cheng A, Fellmann D, Pulokas J, Yoshioka C, Irving C, Mulder A, Lau P-W, Lyumkis D, Potter CS, Carragher B, 2009 Appion: an integrated, database-driven pipeline to facilitate EM image processing. *J. Struct. Biol* 166, 95–102. doi:10.1016/j.jsb.2009.01.002 [PubMed: 19263523]
- Le Grand SM, Merz KM, 1993 Rapid approximation to molecular surface area via the use of Boolean logic and look-up tables. *J. Comput. Chem* 14, 349–352. doi:10.1002/jcc.540140309
- Liu X, Farnung L, Wigge C, Cramer P, 2018 Cryo-EM structure of a mammalian RNA polymerase II elongation complex inhibited by  $\alpha$ -amanitin. *J. Biol. Chem* 293, 7189–7194. doi:10.1074/jbc.RA118.002545 [PubMed: 29550768]
- Noble AJ, Dandey VP, Wei H, Brasch J, Chase J, Acharya P, Tan YZ, Zhang Z, Kim LY, Scapin G, Rapp M, Eng ET, Rice WJ, Cheng A, Negro CJ, Shapiro L, Kwong PD, Jeruzalmi D, des Georges A, Potter CS, Carragher B, 2018a Routine single particle CryoEM sample and grid characterization by tomography. *Elife* 7. doi:10.7554/eLife.34257
- Noble AJ, Wei H, Dandey VP, Zhang Z, Tan YZ, Potter CS, Carragher B, 2018b Reducing effects of particle adsorption to the air-water interface in cryo-EM. *Nat. Methods* 15, 793–795. doi:10.1038/s41592-018-0139-3 [PubMed: 30250056]
- Nogales E, Scheres SHW, 2015 Cryo-EM: A Unique Tool for the Visualization of Macromolecular Complexity. *Mol. Cell* 58, 677–689. doi:10.1016/j.molcel.2015.02.019 [PubMed: 26000851]
- Park H, Zhang K, Ren Y, Nadji S, Sinha N, Taylor J-S, Kang C, 2002 Crystal structure of a DNA decamer containing a cis-syn thymine dimer. *Proc. Natl. Acad. Sci. USA* 99, 15965–15970. doi:10.1073/pnas.242422699 [PubMed: 12456887]

- Petterson EF, Goddard TD, Huang CC, Couch GS, Greenblatt DM, Meng EC, Ferrin TE, 2004 UCSF Chimera—a visualization system for exploratory research and analysis. *J. Comput. Chem* 25, 1605–1612. doi:10.1002/jcc.20084 [PubMed: 15264254]
- Pintilie GD, Zhang J, Goddard TD, Chiu W, Gossard DC, 2010 Quantitative analysis of cryo-EM density map segmentation by watershed and scale-space filtering, and fitting of structures by alignment to regions. *J. Struct. Biol* 170, 427–438. doi:10.1016/j.jsb.2010.03.007 [PubMed: 20338243]
- Roseman AM, 2004 FindEM—a fast, efficient program for automatic selection of particles from electron micrographs. *J. Struct. Biol* 145, 91–99. doi:10.1016/j.jsb.2003.11.007 [PubMed: 15065677]
- Sarker AH, Tsutakawa SE, Kostek S, Ng C, Shin DS, Peris M, Campeau E, Tainer JA, Nogales E, Cooper PK, 2005 Recognition of RNA polymerase II and transcription bubbles by XPG, CSB, and TFIIH: insights for transcription-coupled repair and Cockayne Syndrome. *Mol. Cell* 20, 187–198. doi:10.1016/j.molcel.2005.09.022 [PubMed: 16246722]
- Scheres SHW, Chen S, 2012 Prevention of overfitting in cryo-EM structure determination. *Nat. Methods* 9, 853–854. doi:10.1038/nmeth.2115 [PubMed: 22842542]
- Sharma G, Pallesen J, Das S, Grassucci R, Langlois R, Hampton CM, Kelly DF, des Georges A, Frank J, 2013 Affinity grid-based cryo-EM of PKC binding to RACK1 on the ribosome. *J. Struct. Biol* 181, 190–194. doi:10.1016/j.jsb.2012.11.006 [PubMed: 23228487]
- Song Y, DiMaio F, Wang RY-R, Kim D, Miles C, Brunette T, Thompson J, Baker D, 2013 High-resolution comparative modeling with RosettaCM. *Structure* 21, 1735–1742. doi:10.1016/j.str.2013.08.005 [PubMed: 24035711]
- Suloway C, Pulokas J, Fellmann D, Cheng A, Guerra F, Quispe J, Stagg S, Potter CS, Carragher B, 2005 Automated molecular microscopy: the new Legimon system. *J. Struct. Biol* 151, 41–60. doi:10.1016/j.jsb.2005.03.010 [PubMed: 15890530]
- Tan YZ, Baldwin PR, Davis JH, Williamson JR, Potter CS, Carragher B, Lyumkis D, 2017 Addressing preferred specimen orientation in single-particle cryo-EM through tilting. *Nat. Methods* 14, 793–796. doi:10.1038/nmeth.4347 [PubMed: 28671674]
- Vos SM, Farnung L, Boehning M, Wigge C, Linden A, Urlaub H, Cramer P, 2018 Structure of activated transcription complex Pol II-DSIF-PAF-SPT6. *Nature* 560, 607–612. doi:10.1038/s41586-018-0440-4 [PubMed: 30135578]
- Wang RY-R, Song Y, Barad BA, Cheng Y, Fraser JS, DiMaio F, 2016 Automated structure refinement of macromolecular assemblies from cryo-EM maps using Rosetta. *Elife* 5. doi:10.7554/eLife.17219
- Xu J, Lahiri I, Wang W, Wier A, Cianfrocco MA, Chong J, Hare AA, Dervan PB, DiMaio F, Leschziner AE, Wang D, 2017 Structural basis for the initiation of eukaryotic transcription-coupled DNA repair. *Nature* 551, 653–657. doi:10.1038/nature24658 [PubMed: 29168508]
- Zhang K, 2016 Gctf: Real-time CTF determination and correction. *J. Struct. Biol* 193, 1–12. doi:10.1016/j.jsb.2015.11.003 [PubMed: 26592709]
- Zheng SQ, Palovcak E, Armache J-P, Verba KA, Cheng Y, Agard DA, 2017 MotionCor2: anisotropic correction of beam-induced motion for improved cryo-electron microscopy. *Nat. Methods* 14, 331–332. doi:10.1038/nmeth.4193 [PubMed: 28250466]
- Zivanov J, Nakane T, Forsberg BO, Kimanius D, Hagen WJ, Lindahl E, Scheres SH, 2018 New tools for automated high-resolution cryo-EM structure determination in RELION-3. *Elife* 7. doi:10.7554/eLife.42166



**Figure 1.** Biotinylation of an RNA Polymerase II Elongation Complex stalled at a cyclobutane pyrimidine dimer (CPD) lesion (Pol II EC(CPD)). **(A)** Schematic diagram of the assay used to determine the degree of biotinylation of Pol II EC(CPD). **(B)** Quantification of sample biotinylation. Samples were incubated with or without biotinylation reagent, and then with streptavidin magnetic beads (or without them as negative control). After pelleting the beads using a magnetic stand, supernatants were run on native PAGE gel. The ratios shown at the bottom indicate the streptavidin bead-dependent depletion of Pol II EC(CPD) in the absence (left) or presence (right) of biotinylation reagent. The two bands in each lane represent two different post-translationally modified states of Pol II EC(CPD) present in our sample (Sarker et al., 2005). **(C)** Negative stain EM micrographs of biotinylated Pol II EC(CPD) on continuous carbon (top) and streptavidin monolayer (bottom) grids.



**Figure 2.**

Processing of the streptavidin lattice in our images of Pol II EC(CPD) on streptavidin affinity support grids. **(A)** A representative micrograph showing Pol II EC(CPD) particles on a streptavidin crystal lattice. **(B)** FFT of the micrograph in **(A)** showing diffraction spots from the streptavidin crystal lattice. **(C)** Plot of diffraction spots of the streptavidin monolayer crystal from the micrograph shown in **(A)** after correcting the distortions in the 2D crystal (IQ plot) (Henderson et al., 1986). Each diffraction spot is shown as a square and the size of the square indicates the signal to noise ratio for that spot. **(D)** The same micrograph shown in **(A)** after removing the streptavidin lattice using Fourier filtering. **(E)** FFT of the micrograph in **(D)** showing the disappearance of the diffraction spots. Zoom-ins of the regions highlighted in **(A)** and **(D)** (black squares), and **(B)** and **(E)** (white square) are shown below (for **A** and **B**) or above (for **D** and **E**) the corresponding panels. **(F)** Plot of the resolution at which the cross-correlation between the calculated and observed CTFs is 0.5 as a function of the estimated resolution of the streptavidin crystal. The grey horizontal line shows the CTF resolution cutoff used for image processing (4.5 Å). All the micrographs above the grey line were discarded. The grey (no cutoff), orange (4.5 Å cutoff) and red (2.9 Å cutoff) vertical dashed lines show the diffraction spot resolution cutoffs used for different reconstruction trials. Micrographs to the left of the dashed lines (shown by horizontal lines of the corresponding colors) were used for the reconstructions. The resolutions of the maps from these trials along with the number of particles contributing to the reconstructions are

shown above the graph. The map reported in this work was the one obtained without imposing a diffraction resolution cutoff.

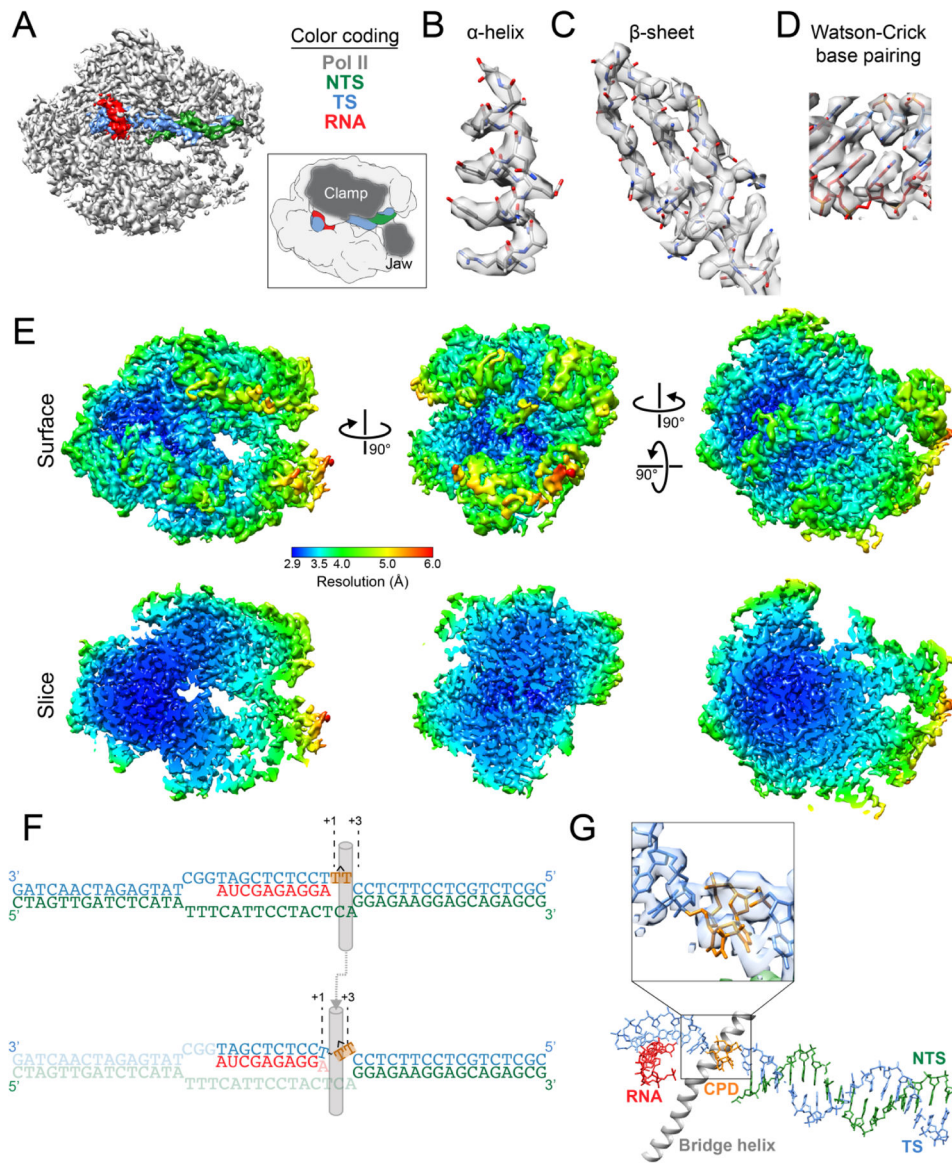
Author Manuscript

Author Manuscript

Author Manuscript

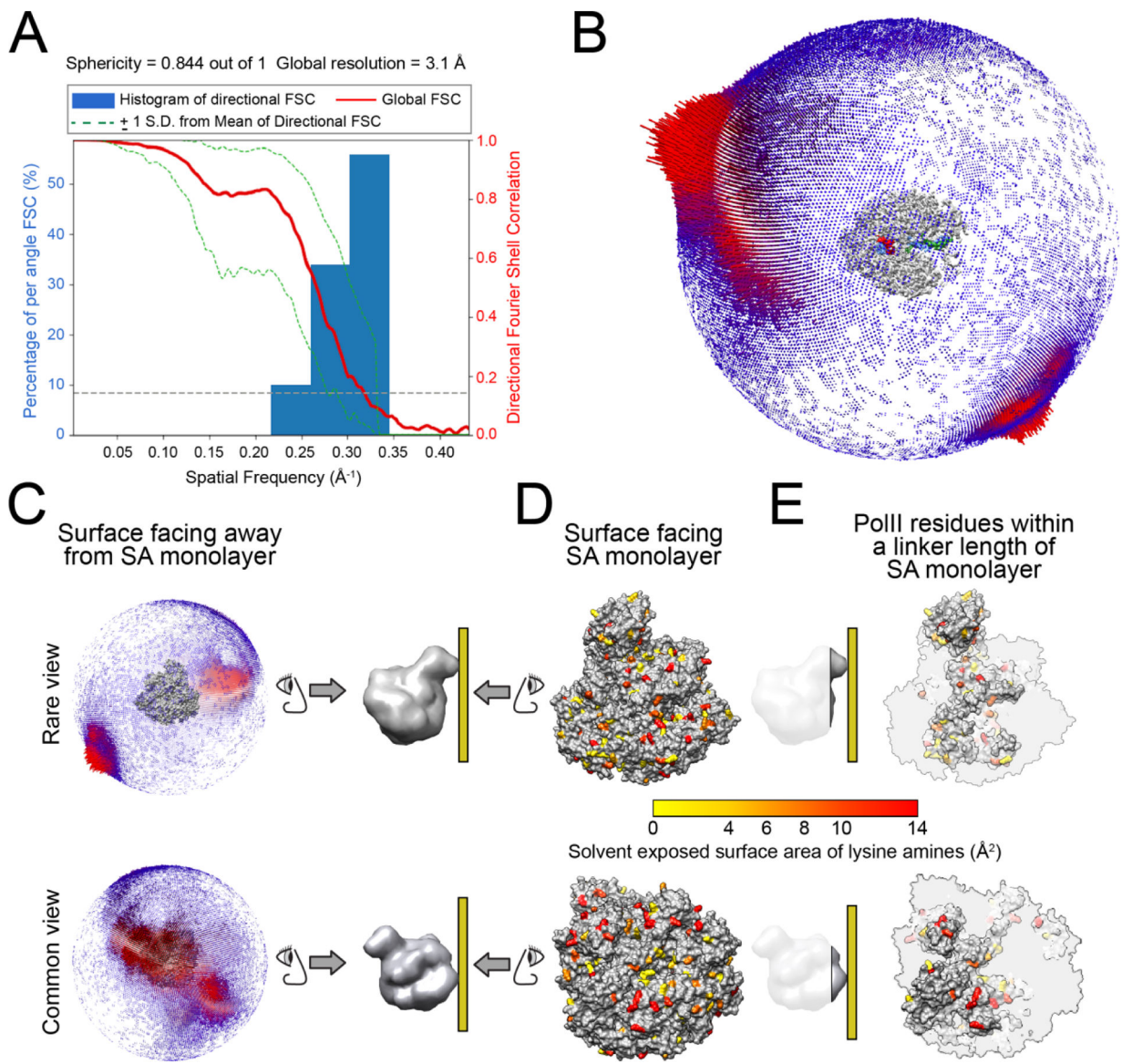
Author Manuscript





**Figure 3.**  
 3.1Å cryo-EM map of a randomly biotinylated Pol II EC(CPD) obtained using monolayer streptavidin crystal affinity grids. **(A)** Locally-filtered Cryo-EM map of Pol II EC(CPD). The map is segmented into the following regions: Pol II (grey), template strand (TS) (blue), non-template strand (NTS) (green) and RNA strand (red). The inset highlights two domains of Pol II we refer to in the text on a cartoon representation of the structure. **(B–D)** Representative regions of the Pol II EC(CPD) map: an alpha helix (B), a beta sheet (C), and Watson-Crick base pairing between the TS and the nascent RNA (D). The map is shown in transparent grey with the atomic model fitted into the density. The color code for the atomic model is the same as in A. **(E)** Pol II EC(CPD) map colored according to local resolution. The top panel shows the surface views of the map in different orientations and the bottom panel shows the corresponding cross-sections to highlight the resolutions in the interior of the map. **(F)** Schematic representations of the expected (top) and observed (bottom)

positions of the bases in the transcription scaffold. The grey cylinder represents the bridge helix. For the observed (bottom) scaffold the dash indicates that the CPD lesion (orange) is connected to the TS by a phosphodiester bond. Bases that are disordered in our map are shown in lighter color. The 5' and 3' ends of the TS (blue) and NTS (green) are indicated. **(G)** Top view of the atomic model of the transcription scaffold. The bridge helix is shown for reference. The inset shows the CPD lesion fitted to the segmented TS density.  $\alpha\beta$



**Figure 4.**

The accessibility of surface-exposed lysines correlates with particle orientation. **(A)** 3D FSC plot for the Pol II EC(CPD) reconstruction. **(B)** Euler angle distribution of the particles contributing to the reconstruction. **(C–E)** Solvent exposed surface area (SASA) of the lysine primary amines available for biotinylation. We used the atomic model of a previously published Pol II elongation complex (PDB ID: 1Y77) to represent the Pol II EC(CPD) in these panels. **(C)** A rare (top) and a common (bottom) view of Pol II EC(CPD) are shown along with the corresponding plots of Euler angle distribution. **(D)** This panel shows the surfaces of Pol II that must face the SA layer to lead to the views shown in (C). The primary amines of lysines are color-coded according to their solvent accessible surface area (SASA), with the least exposed amines shown in yellow and the most exposed ones in red. **(E)** This panel shows the same views shown in (D) but with a cutting plane adjusted such that only lysines whose biotin moieties would be capable of interacting with the streptavidin

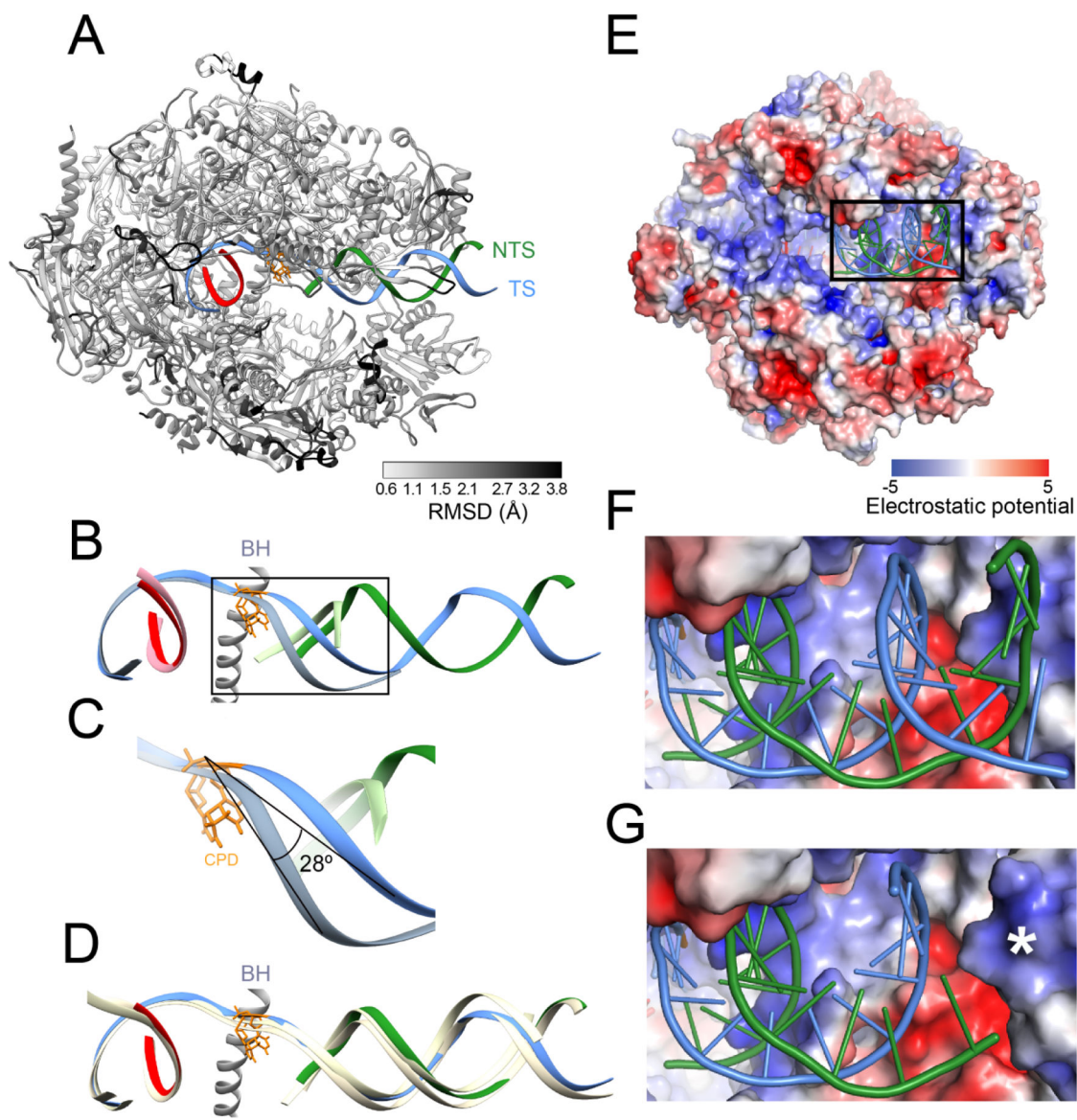
monolayer are shown. The cutting plane was set to  $\sim 29\text{\AA}$  from the lysine's amine, which is the length of a fully stretched biotinylation reagent molecule. The orientations and the cutting planes of the Pol II EC with respect the streptavidin monolayer (ochre rectangle) are shown next to each of the views in (D) and (E).

Author Manuscript

Author Manuscript

Author Manuscript

Author Manuscript



**Figure 5.**

The downstream DNA adopts a canonical orientation despite the local distortion induced by the CPD lesion. **(A)** Comparison between the structure of Pol II EC(CPD) presented here and a previously published structure of Pol II EC(CPD) solved by X-ray crystallography (PDB ID: 2JA6). The root-mean-square deviation (r.m.s.d.) between the Pol II backbones is represented by shades of grey on our structure. The transcription scaffold is colored following the scheme described in Figure 3. **(B)** Comparison between the transcription scaffolds of the two Pol II elongation complexes with CPD-containing DNA templates. The structures were aligned using the protein components; the panel shows the resulting positions of the transcription scaffolds. Our structure was color-coded as in Figure 3. For 2JA6, the non-template strand is in light green, the template strand in light steel blue and the nascent RNA in pink). The bridge helix (BH) and the CPD lesion from our structure are shown in grey and orange, respectively. **(C)** Close-up of the region highlighted in B (black

square). The BH was omitted for clarity. The angle between the template strands in 2JA6 and our structure is shown. **(D)** Comparison between the transcription scaffold of Pol II EC(CPD) from this study and those of two elongation complexes with undamaged DNA templates. As in (B), the structures were aligned using the protein components and the panel shows the resulting positions of the transcription scaffolds. The Pol II EC(CPD) from this study is colored as in (B); The structures of the two elongation complexes with undamaged DNA (5VVS and 5FLM) are shown in yellow. The bridge helix (BH) and the CPD lesion from our structure are shown in grey and orange, respectively. **(E)** Interaction between Pol II and the transcription scaffold. Pol II is shown in surface representation and color-coded according to its electrostatic potential, reported in units of  $K_B T e_c^{-1}$ , where  $K_B$  is the Boltzmann constant, T is the temperature of calculation (310 K) and  $e_c$  is the charge of an electron. The transcription scaffold is shown in stick representation. **(F)** Close-up of the region highlighted in (E) (black square). **(G)** Same view as in (F) but four bases have been computationally removed from the downstream end of both the TS and NTS to mimic the length of the downstream scaffold in 2JA6. The asterisk highlights a positively charged patch that cannot be reached by the shortened scaffold.