

UC Davis

UC Davis Previously Published Works

Title

Head-mounted microendoscopic calcium imaging in dorsal premotor cortex of behaving rhesus macaque

Permalink

<https://escholarship.org/uc/item/3zb913m1>

Journal

Cell Reports, 35(11)

ISSN

2639-1856

Authors

Bollimunta, Anil
Santacruz, Samantha R
Eaton, Ryan W
[et al.](#)

Publication Date

2021-06-01

DOI

10.1016/j.celrep.2021.109239

Peer reviewed



Published in final edited form as:

Cell Rep. 2021 June 15; 35(11): 109239. doi:10.1016/j.celrep.2021.109239.

Head-mounted microendoscopic calcium imaging in dorsal premotor cortex of behaving rhesus macaque

Anil Bollimunta^{1,7}, Samantha R. Santacruz^{2,3,7}, Ryan W. Eaton^{4,5}, Pei S. Xu¹, John H. Morrison^{5,6}, Karen A. Moxon^{4,5}, Jose M. Carmena^{2,8}, Jonathan J. Nassi^{1,8,9,*}

¹Inscopix, Inc., 2462 Embarcadero Way, Palo Alto, CA 94303, USA

²Department of Electrical Engineering and Computer Science, Helen Wills Neuroscience Institute, University of California, Berkeley, 286 Li Ka Shing, MC #3370, Berkeley, CA 94720, USA

³Department of Biomedical Engineering, Institute for Neuroscience, The University of Texas at Austin, 107 W. Dean Keeton Street, Stop C0800, Austin, TX 78712, USA

⁴Department of Biomedical Engineering, University of California, Davis, 3141 Health Sciences Drive, Davis, CA 95616, USA

⁵California National Primate Research Center, University of California, Davis, One Shields Avenue, Davis, CA 95616, USA

⁶Department of Neurology, School of Medicine, University of California Davis, Davis, One Shields Avenue, Davis, CA 95616, USA

⁷These authors contributed equally

⁸Senior author

⁹Lead contact

SUMMARY

Microendoscopic calcium imaging with one-photon miniature microscopes enables unprecedented readout of neural circuit dynamics during active behavior in rodents. In this study, we describe successful application of this technology in the rhesus macaque, demonstrating plug-and-play, head-mounted recordings of cellular-resolution calcium dynamics from large populations of neurons simultaneously in bilateral dorsal premotor cortices during performance of a naturalistic motor reach task. Imaging is stable over several months, allowing us to longitudinally track individual neurons and monitor their relationship to motor behavior over time. We observe neuronal calcium dynamics selective for reach direction, which we could use to decode the

This is an open access article under the CC BY-NC-ND license (<http://creativecommons.org/licenses/by-nc-nd/4.0/>).

*Correspondence: jnassi@inscopix.com.

AUTHOR CONTRIBUTIONS

J.J.N., J.M.C., K.A.M., and J.H.M. conceived the project. J.J.N., A.B., S.R.S., J.J.C., and K.A.M. designed the experiments. J.J.N., A.B., S.R.S., and J.M.C. performed the surgeries. A.B. and R.W.E. performed the imaging and behavior experimental sessions. J.J.N., A.B., S.R.S., R.W.E., and P.S.X. analyzed the data. All authors contributed to writing the paper.

SUPPLEMENTAL INFORMATION

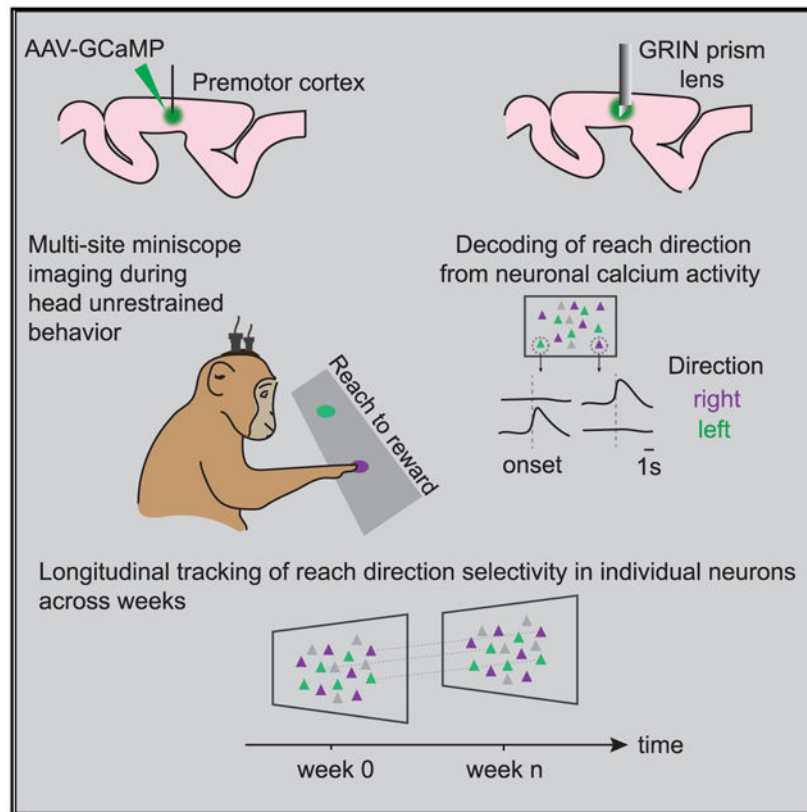
Supplemental information can be found online at <https://doi.org/10.1016/j.celrep.2021.109239>.

DECLARATION OF INTERESTS

A.B., P.S.X., and J.J.N. are paid employees of Inscopix, Inc. The remaining authors declare no competing interests.

animal's trial-by-trial motor behavior. This work establishes head-mounted microendoscopic calcium imaging in macaques as a powerful approach for studying the neural circuit mechanisms underlying complex and clinically relevant behaviors, and it promises to greatly advance our understanding of human brain function, as well as its dysfunction in neurological disease.

Graphical abstract



In brief

Bollimunta et al. demonstrate head-mounted recordings of cellular-resolution calcium dynamics from large populations of premotor cortical neurons in behaving macaques. Imaging is stable over several months, allowing longitudinal tracking of neurons over time. Calcium dynamics exhibit selectivity for reach direction and could be used to decode the animal's motor behavior.

INTRODUCTION

Mesoscale neural circuits have increasingly become a key focus of studies investigating brain function in health and disease. The development of new methodologies to support these studies has rapidly accelerated during the last decade, with optical technologies, such as calcium imaging and optogenetics, quickly becoming mainstays of circuit neuroscience investigation (Jennings and Stuber, 2014; Hamel et al., 2015; Deisseroth, 2015; Yang and Yuste, 2017). Calcium imaging, bolstered by the explosive development of molecular-genetic tools (Chen et al., 2013b; Luo et al., 2018), offers several important advantages over

conventional electrophysiological approaches. Notably, calcium imaging enables the ability to record with high cellular sampling density from large populations of genetically or anatomically defined neurons and to longitudinally track individual neurons over time (Hamel et al., 2015; Yang and Yuste, 2017). These powerful capabilities, now routinely applied in mouse models, have already yielded tremendous new insights into the neural basis of essential brain functions.

Despite these important advances, a critical need still exists to deploy these new technologies beyond the mouse to a larger animal model species of relevance to humans (O'Shea et al., 2017). Non-human primates (NHPs) are a particularly important model species in this regard, with brain structure and function, as well as complex cognitive and behavioral abilities, highly similar to that of humans (Capitanio and Emborg, 2008; Phillips et al., 2014; Roelfsema and Treue, 2014). Additionally, recent advances in genome editing are quickly making NHPs viable genetic models of human disease (Sato and Sasaki, 2018). Therefore, transfer of the latest optical technologies from rodents to behaving NHPs promises to play a key role in elucidating clinically relevant neural activity correlates of healthy and aberrant human behavior. Successful application of calcium imaging in NHPs, however, has been slow to develop for a number of reasons. In particular, difficulties using conventional viruses to express genetically encoded calcium indicators in the NHP brain (Sadakane et al., 2015a) and imaging artifacts caused by movements of the larger volume NHP brain (Trautmann et al., 2021; Choi et al., 2018) have proven most challenging. Additionally, NHPs have a more mature immune system, as compared to that of rodents, that requires sophisticated surgical strategies and neural implant hardware, and limitations exist on the overall number of animals that can be used for trial-and-error technology development (Phillips et al., 2014).

Recent efforts applying two-photon microscopy and GCaMP-based calcium imaging in NHPs have overcome some of these challenges by refining aspects of the surgical and viral preparation and imaging system (Sadakane et al., 2015a; Seidemann et al., 2016; Yamada et al., 2016; Santisakultarm et al., 2016; Ebina et al., 2018; Zeng et al., 2019; Li et al., 2017; Ju et al., 2018; Garg et al., 2019; Trautmann et al., 2021). These efforts have so far relied on transparent glass or silicone windows implanted over the brain to enable imaging of cortex to depths less than approximately 500 μm (e.g., cortical layers 2 and 3). The substantial motion artifacts inherent in this approach can be partially mitigated via mechanical pressure applied to the brain via the imaging window. While conventional adeno-associated viruses (AAVs) encoding GCaMP have in some cases proven sufficient for *in vivo* imaging (Li et al., 2017; Ju et al., 2018; Trautmann et al., 2021), novel viral strategies such as AAVs utilizing tetracycline-controlled transcriptional activation (e.g., Tet-Off) have proven more effective at driving adequate levels of GCaMP expression (Sadakane et al., 2015a; Garg et al., 2019). While two-photon calcium imaging through cranial windows has many merits, it also has several limitations, including (1) the infection risk of using glass or silicone surface windows, which also have limited functional lifetimes (e.g., degradation of optical clarity over time) and require daily maintenance; (2) cumbersome daily alignment between the microscope and the brain in order to maintain a consistent field of view (FOV) and track neurons across sessions; (3) an inability to image gyral cortex deeper than approximately 500 μm , sulcal cortical areas, or subcortical structures residing even deeper in the brain; (4)

an inability to measure from multiple brain areas in true simultaneity with a single scanning laser beam; and (5) the necessity for head restraint, thereby limiting natural behavior.

An alternative to two-photon imaging that is poised to overcome many of these challenges in NHPs is the miniature, integrated one-photon fluorescence microscope (Ghosh et al., 2011; Ziv et al., 2013; Chen et al., 2013a; Ziv and Ghosh, 2015; Resendez et al., 2016). The nVista miniscope (Inscopix) weighs less than 2 g and can be carried on the head of a mouse while it is moving and behaving naturally. Used in conjunction with custom-designed gradient-refractive index (GRIN) microendoscopic lenses of various lengths and diameters, the nVista miniscope allows neuroscientists to visualize the activity of genetically defined neurons in almost all regions of the mouse brain, including deep brain structures inaccessible to other large-scale recording technologies. A proof-of-concept demonstration of miniscope calcium imaging in NHPs was recently demonstrated in deep layers of primary motor cortex of behaving marmosets (Kondo et al., 2018). This study confirmed several important advantages of this technology as applied in the NHP, including microendoscopic (as opposed to surface window) imaging access to deep cortical layers beyond the current depth limits of two-photon imaging and the ability to perform imaging during more natural, free behavior (e.g., head-unrestrained arm reaches, unrestrained ladder climbing) as compared to two-photon imaging under head-fixed conditions. While this study marked an important first step toward miniscope calcium imaging applications in NHPs, the marmoset's small brain and lissencephalic cortex allowed for a relatively straightforward and smooth translation of methods already established in rodent models. The degree to which these methods would generalize to other NHP species, particularly those with larger brains and a gyrencephalic cortex, such as the more commonly studied rhesus macaque, remained to be determined.

In this study, we demonstrate microendoscopic calcium imaging with head-mounted miniscopes in behaving rhesus macaques. To do so, we developed a viral strategy to express GCaMP in superficial and deep cortical layers, surgical methods for GRIN lens microendoscope probe insertion, and implant hardware optimized for performing chronic calcium imaging in macaque gyral cortex. The resulting imaging implants proved to be low in maintenance, with little risk of infection and high optical clarity maintained throughout the entire period of study (>8 months). We performed plug-and-play, head-mounted recordings of cellular-resolution calcium dynamics from more than 100 genetically targeted neurons in dorsal premotor cortex (PMd) while the macaque performed a naturalistic motor reach task with the head unrestrained and freely moving. We observed neuronal calcium dynamics selective to the animal's directions of reach and a diversity of such selectivity across the recorded population. This population activity was used to decode the animal's reach direction on individual trials. These recordings were stable over several months, allowing us to repeatedly measure the selectivity properties of populations of individual neurons over time. Finally, we took advantage of the small footprint of the miniscope to mount two miniscopes and perform simultaneous, multi-site imaging in PMd bilaterally, allowing for the measurement of both contralateral and ipsilateral neuronal population calcium dynamics during individual right or left arm reaches. These proof-of-concept results demonstrating head-mounted microendoscopic calcium imaging in behaving macaques provide an important step forward toward applying this powerful technology in NHPs and set the stage for future applications aimed at studying the neural circuit mechanisms

underlying complex behavior and higher cognitive function in a model species similar to humans.

RESULTS

Surgical preparation for microendoscopic calcium imaging in macaque PMd

In this study, we demonstrate microendoscopic calcium imaging with head-mounted miniscopes in behaving rhesus macaques (Figure 1). Preparing the animal for imaging requires several steps, including two survival surgeries, the first to deliver a virus to the brain region of interest for expression of a genetically encoded calcium indicator (e.g., GCaMP; Chen et al., 2013b) and the second to chronically implant a microendoscopic GRIN lens for optical access to that same brain region (Figure S1).

For calcium indicator expression in macaque cortex, we utilized two different AAV-based strategies tested first in a separate animal (Figure 1B; Figure S2). One strategy used a conventional AAV (AAV1.CaMK2a.GCaMP6f) that has previously been shown to enable GCaMP-based two-photon calcium imaging in macaque cortex (Li et al., 2017). The second strategy used an AAV Tet-Off virus system consisting of two viruses mixed together (AAV5.Thy1s.tTA and AAV5.TRE3.GCaMP6f), which has been shown to express higher levels of GCaMP in shorter amounts of time as compared to conventional AAVs (Sadakane et al., 2015a; Garg et al., 2019). Furthermore, expression of GCaMP with this system is TET-dependent, and therefore administration of doxycycline (Dox) to the animal can temporarily suppress expression of GCaMP (Sadakane et al., 2015a; Kondo et al., 2018), which may be important for preventing overexpression for long-term chronic imaging. Both of these viral approaches resulted in robust cortical expression of GCaMP6f in the two animals we studied, with adequate spread across and within supragranular and infragranular layers of cortex (Figure S2). The morphology of GCaMP-expressing cells indicated expression biased toward excitatory pyramidal neurons in the case of the CaMK2a virus and unbiased, pan-neuronal expression in the case of the Tet-Off virus system. Consistent with previous reports (Sadakane et al., 2015a; Kondo et al., 2018), the Tet-Off virus system resulted in higher levels of expression as compared to the conventional CaMK2a virus at the same time point post-injection (approximately 45% higher fluorescence intensity in post-mortem tissue; see STAR Methods for details).

We targeted the forelimb region of PMd bilaterally for imaging, relying on structural MRI images along with a standard atlas to determine stereotaxic coordinates prior to surgery, with minor adjustments to the final coordinates based on perioperative visualization of sulcal/gyral landmarks (see Figure S2 for post-mortem confirmation). In the left hemisphere PMd we co-injected both viruses (mixed 1:1) comprising the Tet-Off virus system (titers: $2.18E+11$ genome copies [GC]/mL for AAV5.mThy1PSS.tTAad and $2.08E+11$ GC/mL for AAV5.TRE3.GCaMP6f), and in the right hemisphere PMd we injected AAV1.CaMK2a.GCaMP6f (titer: $2.3E+13$ GC/mL) (see STAR Methods for further details). In order to enable precise alignment of the GRIN lenses to the virus injection sites in the subsequent surgery (~2 weeks later), we implemented two critical procedures: (1) photo documentation of the virus injection sites relative to the local blood vessel pattern and placement of fiducial marks on the skull, aligned with the virus injection sites, along with

measurement of the distances between fiducial marks and the sites of injection; and (2) complete sealing of the durotomies using a combination of artificial dura and silicone elastomer, which prevented substantial neovascularization and pia/arachnoid cell proliferation during the time between surgeries (Figure S1). Together, these two procedures allowed us to reference the fiducial marks and the local blood vessel patterns for precise alignment of virus injection and lens implantation sites. Prior to lens insertion, we made a linear incision in the cortex to create a path for the lens probe (Gulati et al., 2017; Kondo et al., 2018). We then inserted a GRIN prism lens (1-mm diameter, 9-mm length ProView Integrated Prism Lens; Inscopix) approximately 2 mm below the surface of the cortex and at an angle perpendicular to the cortical surface, with the prism attached to the end relaying a side-view imaging plane ($\sim 750 \times 900\text{-}\mu\text{m}$ FOV) parallel to the axis of the probe and perpendicular to cortical layers (Figure S2) (Gulati et al., 2017; Kondo et al., 2018). We chronically secured the top of the lens along with the integrated miniscope baseplate (which acts as a docking station for the miniscope) to the skull by embedding it in a combination of acrylic and cement (Figure 1A). We surrounded both lens implants with custom cranial chambers, each with a removable cap, that were embedded together with skull screws in a single acrylic head cap. Given that the craniotomies were completely sealed with cement/acrylic, the resulting implants had a low risk of infection and required little to no maintenance. This was confirmed across four separate implants in two animals (including animal 1 used only for testing viruses and lens implantations) that all remained free from infection and exhibited clear imaging FOVs with healthy and adequately perfused cortical tissue adjacent to the lens for the duration of the study (data not shown). Once the above two surgical steps were complete, the animal was ready for calcium imaging.

Plug-and-play, cellular resolution calcium imaging in alert macaque PMd

Approximately 2 weeks following the lens implantation surgery, we initiated bilateral calcium imaging sessions in the alert macaque. A major advantage of the head-mounted miniscope and the implant design approach described herein is that it enables plug-and-play imaging sessions (Video S1). The animal, sitting comfortably in a standard primate chair, was temporarily restrained for miniscope docking, in this case with soft cushions placed against the sides of the head. In three simple and quick steps the cranial chamber cap was taken off, a cover on the miniscope baseplate was removed, and the miniscope (nVista 3.0; Inscopix) was docked to the baseplate and secured in place by tightening a single set screw. The entire procedure was completed in less than 2 min per chamber. The animal's head was then unrestrained and imaging commenced.

We observed GCaMP-expressing cells and corresponding cellular calcium dynamics in the very first imaging session conducted 2 weeks following lens implantation, and the number of cells ramped up to relatively stable values 4 weeks later when we started imaging while the animal performed a motor reach behavioral task (Figures 1C–1F; Videos S2 and S3). During these imaging sessions, the animal's head was completely unrestrained and free to move naturally, and the animal was allowed frequent chewing of the food reward (Video S2). Despite these significant jaw, head, and body movements, the imaging FOV was very stable, requiring only a standard, rigid translation motion correction algorithm (Inscopix data processing software [IDPS]; Inscopix) to precisely register frames across the entire

recording (Video S3). During a typical session, across all recorded video frames, the applied correction had a median of 0.75 μm (interquartile range [IQR] 0.5–1.1), which was an order of magnitude smaller than the imaged size of an average cell body. A small correlation between head movement and FOV translation was completely mitigated following motion correction (Pearson's correlation: $\rho = 0.11$, $p < 0.001$, before motion correction; $\rho = 0.01$, $p = 0.2$, after motion correction; see STAR Methods for further details).

We used constrained nonnegative matrix factorization (CNMFe), a common algorithm for cell identification from one-photon microendoscopic calcium imaging data, to identify individual cells and extract their cellular calcium dynamics (see STAR Methods for more details) (Zhou et al., 2018). In the example left hemisphere recording shown (129 days after virus injection and 113 days after lens implantation), we identified 106 individual cells (Figures 1C and 1D). The calcium events had sufficient signal-to-noise ratio (SNR) to be detected by a standard event detection algorithm (IDPS; Inscopix), and they had the typical and expected shape with a fast rise and exponential decay (rise median 0.20 s [IQR 0.15–0.22]; decay median 0.35 s [IQR 0.30–0.50]) (Figure 1E). Both SNR (median 7.6 [IQR 5.7–9.4]) and event rates (median 0.03 events/s [IQR 0.02–0.04]) measured across the population for this example session (Figure 1F) were similar to those typically observed in calcium imaging studies in rodent models (Chen et al., 2013b; Resendez et al., 2016). We observed significantly fewer imageable cells in the right hemisphere PMd, likely due to non-optimal placement of the lens relative to the zone of GCaMP-expressing cells (Figures S2 and S3). Nevertheless, the detected calcium events measured from these cells had similar SNR (median 7.6 [IQR 6.8–8.4]) and event rates (median 0.03 events/s [IQR 0.02–0.05]) to those observed from cells in the left hemisphere.

Chronic, longitudinal calcium imaging and tracking of populations of individual neurons over time

We performed a total of 66 imaging sessions over approximately 8 months, with 42 consecutive calcium imaging sessions during the first 4 months (Figure 2A, day –33 to day 76), followed by a pause in calcium imaging in order to conduct sedated blood flow imaging (Video S4; see STAR Methods for more details). Resumption of calcium imaging began 1 month later after the systemically injected fluorescein dye, which interfered with our ability to detect GCaMP fluorescence signals, completely dissipated. We continued calcium imaging during month 6 in order to test the effects of Dox administration on measured calcium dynamics. During the 32 imaging sessions from day 0 to day 76 (Figure 2A), where the animal performed the task satisfactorily, the overall imaging quality and measured calcium dynamics were found to be stable (Figures 2B and 2C; Figures S3D and S3E). Moreover, the kinematics of reach, as measured by the time from reach onset to target acquisition, were found to be stable over the course of the study (day 0: median 0.33 s [IQR 0.30–0.38]; day 76: 0.31 s [IQR 0.30–0.33]). The number of cells identified in the left hemisphere PMd fluctuated from session to session (minimum [min] of 70, maximum [max] of 123), but it was relatively stable with a median of 104 (IQR 91–113) imaged cells per session (Figure 2B). The SNR (median 7.4 [IQR 7.2–7.6]) and rates (median 0.026 events/s [IQR 0.024–0.028]) of detected calcium events were also relatively stable across sessions

(Figure 2C). Similar stability was observed for cells imaged in the right hemisphere PMd (Figures S3D and S3E).

A comparison of calcium event decay kinetics from left and right hemisphere cell populations across sessions indicated significantly slower decay in the left hemisphere compared to the right (left: median 0.67 s [IQR 0.56–0.76]; right: median 0.23 s [IQR 0.22–0.24]; Wilcoxon rank-sum test, $p < 0.001$), which, given equivalent SNRs across the two hemispheres (left: median 7.35 [IQR 7.15–7.61]; right: median 7.56 [IQR 7.09–7.78]; Wilcoxon rank-sum test, $p = 0.54$), suggested that GCaMP expression levels were higher in the left hemisphere cell population than in the right hemisphere cell population (see Discussion). This is also consistent with the post-mortem histology results (Figure S2), which indicate that the Tet-Off virus system (injected into the left hemisphere of the imaged animal) resulted in higher levels of expression compared to the CaMK2a virus (injected into the right hemisphere of the imaged animal) at the same time point post-injection. Given that overexpression of GCaMP can eventually result in epileptiform activity and cellular toxicity (none of which was observed in this study) (Chen et al., 2013b; Resendez et al., 2016; Steinmetz et al., 2017), it is important for long-term chronic imaging experiments to be able to keep expression levels within a reasonable range. Therefore, we additionally tested the effects of Dox administration (5 days once daily, 15 mg/kg) on measured calcium dynamics (Figure S4; see STAR Methods for more details). As expected, administration of Dox resulted in a significant reduction of GCaMP expression levels, as can be seen in the maximum projection images and quantified by full-FOV average fluorescence. The number of identified cells was reduced from 75 to 0 just 3 days following cessation of Dox (8 days after initiation of Dox). Dox administration also led to faster decay kinetics of measured calcium events, providing additional evidence for reduced GCaMP levels within cells. The full-FOV average fluorescence, number of identified cells, and decay kinetics all returned to pre-Dox levels approximately 40 days following cessation of Dox (Figure S4). In the final imaging session conducted 8 months after the first session, imaging quality was maintained and calcium dynamics and events rates remained comparable to those measured in the first 4 months of recordings. These results indicate that the Tet-Off viral strategy for GCaMP expression allows active maintenance of indicator expression within acceptable levels over months of chronic imaging study.

Given the overall stability of imaging quality and calcium dynamics across sessions, we next assessed how well we could track the same individual neurons across sessions, which is a major advantage of optical imaging techniques compared to electrophysiology (Ziv et al., 2013; Sheintuch et al., 2017). We demonstrated these capabilities for imaging in a behaving macaque here, by applying a modified version of an established longitudinal cell registration algorithm (IDPS; Inscopix) (see STAR Methods for more details). For any two imaging sessions (7 day separation in Figure 2D), the cell maps extracted by CNMFe were first spatially registered by rigidly translating one map to the other in order to maximize the cross-correlation between them (Figure 2D). Once the cell maps for the two imaging sessions were registered, we calculated the spatial correlation between each cell and each of the rest of the cells in the population to detect candidate same-cell pairs across imaging sessions. Any cell pairs with a spatial correlation above a threshold value were considered putative same-cell pairs (colored white in Figure 2D). Importantly, note that ground-truth

identification and measurement of same-cell pairs is unavailable, and the number of same-cell pairs identified across sessions with this approach is dependent on the chosen spatial correlation threshold (Figure S5B). For the example session pair shown, we were able to identify 63% of cells (61 out of 97) imaged on day 29 as the same cells imaged on day 36 (see Figure S5A for additional examples). Applying this approach to all possible imaging session pairs resulted in a median of approximately 70% same-cell pairs with minimum intersession intervals of 1–4 days, which dropped and plateaued to around 40% same-cell pairs with maximum intersession intervals of 67–73 days (Figure 2E). We further asked whether we could track the same populations of neurons through multiple, consecutive imaging sessions, rather than simply across any two session pairs. To track neurons across multiple sessions, we focused on a subset of seven imaging sessions spanning approximately 3 weeks and applied a custom longitudinal registration algorithm (Figure 2F; see STAR Methods for more details). We were able to track the same neurons across multiple imaging sessions, finding 68 cells active on only one of the seven imaging sessions and 17 cells active in all seven of seven imaging sessions. Taken together, these results validate the ability to image the calcium dynamics of large populations of neurons in behaving macaques, over many months, with sufficient stability in imaging quality to longitudinally track individual neurons over time.

Decoding of natural motor reach behavior from ensemble calcium dynamics

We next sought to directly relate population calcium-related activity to the animal's behavior. The animal was trained to perform a natural motor reach task in which the location of a food reward was randomly alternated across trials between two distinct locations (zone 1 and 2), and once the reward was placed in one of those locations the animal could reach, pick up, and consume the food reward (Figure 3A). The animal made reaches with either the right or left arm in alternating blocks of trials. Based on previous electrophysiological studies in macaque PMd, we expected neural activity to be selective for the animal's direction of reach, with particularly strong modulation of activity during reaches of the arm contralateral to the recorded hemisphere (Riehle and Requin, 1989; Kurata, 1993; Cisek and Kalaska, 2005). Our results confirmed these expectations, with clear evidence for cellular calcium dynamics selective for reach direction in both the left and right hemispheres (Figures 3B–3D; Video S5; Figure S6). In the example left hemisphere recording shown (day 27, see Figure 2A for experimental timeline), where the animal was reaching with the right arm, several cells exhibited increased calcium activity and a higher probability of calcium events during both zone 1 and zone 2 reaches, while other cells exhibited increased activity for zone 1 reaches compared to zone 2 reaches, or vice versa. Three example cells from this session clearly demonstrate these distinct selectivity profiles (Figure 3B), both in terms of reach-modulated calcium event rates and calcium trace dynamics.

We observed substantial diversity in reach-related modulation of calcium trace activity across the entire population of imaged cells in the example session (Figure 3C), with most cells (75%, 78/104 cells) exhibiting significant modulation of activity associated with one or both reach directions (see STAR Methods). We calculated a tuning index to capture the degree to which each cell was selective for a particular reach direction across the entire population (Figure 3D). We then used that tuning index to classify cells as either zone 1

selective, zone 2 selective, or non-selective, finding that 35 of 78 cells were selective, 20% for zone 1 and 17% for zone 2. We applied this approach to individual sessions and found similar percentages of reach-modulated cells (median 67.8 [IQR 70.1–72.6]), and selectivity to zone 1 (median 14.7 [IQR 8.6–17.9]) and zone 2 (median 15.0 [IQR 13.7–18.9]), across sessions (Figure 3E). Using the same tuning index classification, we then mapped the distribution back onto the imaged FOV in the brain to assess whether selectivity for reach direction is spatially organized in PMd (Figure 3F). We did not observe any obvious spatial organization in these selectivity maps. To test whether cells with similar selectivity tend to reside closer together than expected by chance, we calculated a cluster metric, which is the frequency with which the closest neighboring cell is similarly selective (see STAR Methods). A cluster metric value that is significantly greater than 0.5 would suggest clustering of similarly selective cells. For the example session shown in Figure 3F the cluster metric was 0.57 and was not significantly different from 0.5 ($p = 0.16$; permutation test). The GRIN prism lens used in the present study allows for simultaneous imaging of cells spread across multiple cortical layers. To investigate whether the reach direction selectivity is more prevalent in specific cortical layers, we estimated the proportion of direction-selective cells as a function of cortical depth (Figure 3F, right). For the example session shown here the prevalence of selectivity was found to be fairly uniform across the depth of the cortex within the FOV.

Given the presence of reach location direction calcium activity in the recorded population, we investigated whether we could use the cellular calcium dynamics from the ensemble to decode the animal's reach direction on a trial-by-trial basis. Partial least squares discriminant analysis (PLS-DA) with leave-one-out cross-validation was used to decode reach direction from the continuous calcium trace activity of all identified cells within a 400-ms sliding window stepped at 100 ms (see STAR Methods for more details). Decoding accuracy was well above chance and peaked around the time of zone entry (Figure 3G; see Figure S6H for similar results from the right hemisphere). Decoding accuracy was stable across sessions (Figure S7). Despite the sparseness of calcium events relative to continuous calcium traces, decoding accuracy based on calcium events was also well above chance (Figure 3G, inset; see STAR Methods for details on the decoding algorithm used). As expected, decoding accuracy was dependent on the number of cells used to train the decoder, but remained above chance levels with as few as just one cell included for training (Figure S7).

Tracking the relationship between ensemble calcium dynamics and behavior over time

Having established that neurons in both left and right hemisphere PMd exhibited calcium dynamics selective for reach direction (Figure 3; Figure S6), and having validated our ability to longitudinally track populations of neurons across sessions (Figure 2; Figure S5), we were interested to determine the degree to which the direction selectivity of individual neurons changes or remains stable over time. We focused this analysis on a subset of left hemisphere imaging sessions for which the animal completed adequate numbers of reach trials, spanning five different sessions during 2 weeks. For the example session pair shown (Figure 4A, spaced 1 day apart), we spatially registered their cell maps and identified 82 putative same-cell pairs (123 total cells imaged on day 26 and 104 total cells imaged on day 27) (Figure

4A). We then compared the tuning indices for each of these same-cell pairs across the two imaging sessions, observing significant correlation (0.45, $p < 0.001$) and no significant change in the tuning of the population (Wilcoxon signed-rank test, $p = 0.98$) (Figure 4B). As the inter-session interval increased, the correlation between tuning indices across session pairs remained high, and changes in tuning indices across session pairs remained low, indicating stable direction selectivity in PMd cells over greater than 2 weeks (Figure 4C).

Given the relatively stable population tuning dynamics measured for longitudinally tracked cells across sessions, we predicted that a decoder trained with calcium trace activity from a given session would perform reasonably well when tested on data from a separate session. This was confirmed for the same example session pair (spaced 1 day apart), where decoding accuracy was well above chance level and peaked around the time of zone entry, both for within-session testing and testing across the 1 day inter-session interval (Figure 4D). As the inter-session interval increased, the peak decoding accuracy remained above chance levels in most cases (Figure 4E; Table S1), indicating that the encoding of reach direction in PMd is relatively stable over days to weeks. Taken together, these results provide proof of concept for how longitudinally tracked neurons can be applied toward advancing our understanding of the dynamic relationship between neural activity and behavior.

Multi-site bilateral calcium imaging in dorsal premotor cortices

The results presented so far come from the left or right hemisphere PMd separately, while the animal reached with the arm contralateral to the recorded hemisphere. In recording sessions from day 20 to day 76 we additionally imaged simultaneously from both hemispheres (Figure 5). Due to the small size of the miniscope, there was more than enough space on the head to mount two miniscopes, with ample space remaining for several more as may be desired in future studies. Despite imaging significantly fewer cells in the right hemisphere PMd as compared to the left hemisphere PMd (Figure 1; Figure S3), these recordings provided an opportunity to establish proof of concept for simultaneous multi-site imaging. In order to take advantage of bilateral imaging capabilities, we trained the animal to perform a similar motor reach task to that already described, except the animal was trained to use the right arm to reach to zone 1 and the left arm to reach to zone 2 (Figure 5A).

In the example bilateral recording session shown in Figure 5 (day 29), we found clear evidence for cellular calcium dynamics selective for ipsilateral or contralateral reach in both the left and right hemispheres (Figure 5B; Video S6). We observed substantial diversity in reach-related modulation of calcium trace activity across the entire population of bilaterally imaged cells (Figure 5C). While most cells exhibited significant modulation of activity associated with contralateral reaches, a minority of cells were sensitive to ipsilateral reaches.

Given the presence of selectivity for both ipsilateral and contralateral reaches among the populations of recorded neurons in both hemispheres, we investigated whether we could use the cellular calcium dynamics from the bilateral ensemble to decode the identity of the arm being used to reach on a trial-by-trial basis. As before, we used PLS-DA with leave-one-out cross-validation to decode left or right arm reach from continuous calcium trace activity within a 400-ms sliding window stepped at 100 ms. In this example session, decoding

accuracy was well above chance and peaked around the time of zone entry (Figure 5D). Peak decoding accuracy was stable across sessions (Figure 5E). Taken together, these results establish proof-of-concept simultaneous multi-site imaging and provide preliminary data applying these capabilities toward advancing our understanding of the bilateral encoding of motor reach behavior.

DISCUSSION

In this study, we demonstrate successful microendoscopic calcium imaging with head-mounted miniscopes in a behaving rhesus macaque. As part of this work, we developed an effective strategy and surgical protocol for virally mediated expression of GCaMP, as well as placement of a microendoscopic GRIN prism lens co-aligned to a region of interest in gyral cortex (Figures S1 and S2). Our surgical approach, including the placement of fiducial marks on the skull and the complete sealing of the durotomy and craniotomy to preserve the health of the underlying cortex, proved very helpful for co-alignment. The reported spread of GCaMP expression as a function of the volume and titer of the injected virus (Figures S2C–S2E) should inform future studies in planning the spacing of multiple nearby injections to increase the overall extent of the expression zone and its overlap with the site of the implanted lens. The complete implant, including the GRIN lens, integrated miniscope baseplate, and cranial chamber, enabled plug-and-play daily recordings (Figures 1 and 2; Figure S3; Videos S1, S2, and S3) and chronic, long-term study of naturalistic reaching behavior (Figures 3, 4, and 5; Figures S4–S7; Videos S5 and S6). We were able to measure the calcium dynamics of large ensembles of neurons (more than 100 neurons per day on average in left hemisphere PMd) with SNR and event rates consistent with expectations from previous one-photon microendoscopic calcium imaging studies in rodents (Chen et al., 2013b; Resendez et al., 2016). These high-quality imaging results were obtained with miniscopes mounted directly to the animal's head with the head unrestrained and free to move naturally. Future studies are required to confirm the compatibility of this approach with traditional head-restrained behavior. Importantly, despite significant head movements, including chewing of rewards regularly throughout the recordings, we observed a highly stable FOV with only minor offline correction required. This approach, therefore, enables recording of neural activity during more natural behavioral conditions (e.g., head unrestrained), as compared to other large-scale recording technologies, greatly expanding the range and complexity of behaviors that can be studied (Gilja et al., 2010; Foster et al., 2014).

Our surgical and imaging approach allowed us to measure the calcium activity of neuronal ensembles in PMd cortex while simultaneously monitoring the animal's motor reach behavior (Figure 3). We found evidence for reach-related modulation and selectivity preferences from the calcium traces and the extracted calcium events of recorded neurons (Figures 3B–3E; Figure S6). Furthermore, both the calcium traces and events could be used to decode the animal's trial-by-trial direction of reach with accuracy significantly above chance levels, with highest performance levels using traces (Figure 3G; Figure S7). The lower decoding performance for calcium events is likely related to their relative temporal sparsity, consistent with previous results (Ziv et al., 2013). Indeed, observed calcium event rates ranged from 0 to 0.5 events/s, significantly lower than spike rate ranges (5–30 spikes/s

modulation at the time of reach onset) measured electrophysiologically in PMd under similar behavioral paradigms. Discrepancies such as this between measured calcium dynamics and spiking activity are relatively well understood based on the relationship between fast action potential firing and the slower kinetics of the corresponding calcium-related activity (see STAR Methods for further discussion) (Wei et al., 2020; also see <http://im-phys.org/>). We therefore primarily utilized continuous calcium traces and not events for our analyses relating neural activity to behavior. It was striking to learn that high decoding performance could be maintained even when randomly sub-sampling just a single neuron from the population (Figure S7), providing strong evidence for the encoding of motor reach behavior among the imaged ensemble. Importantly, the within-session selectivity preference distributions and decoding performances we observed are consistent with recent results obtained in motor cortex with two-photon microscopy (Trautmann et al., 2021) and previously reported results obtained electrophysiologically (Riehle and Requin, 1989; Kurata, 1993; Cisek and Kalaska, 2005). The ability to relate the functional properties of neuronal populations to their precise location and spatial organization within the brain is an additional major advantage of the optical imaging approach used in the present study. We were able to map the selectivity preferences of neurons back onto the imaged FOV and assess the laminar distribution, and we found overall heterogeneous spatial organization of selectivity for direction of reach (Figure 3F), which is again consistent with results obtained electrophysiologically (E.M. Trautmann et al., 2019, Soc. Neurosci., conference).

Given the time investment associated with training NHPs on complex cognitive and behavioral tasks, studies in macaques often involve experimentation in each individual animal lasting months to years. It is therefore critical that recording technologies applied in NHPs have the longevity to support such chronic, long-term studies. In this study, we showed that the number of recorded cells and the SNR and event rates measured from those cells were relatively stable across several months of recordings (Figures 2 and 4; Figures S3 and S5). Despite most of these sessions occurring within a 2-month time window, we observed similar quality results in the very final session prior to discontinuing the study, suggesting longevity of at least 8 months and likely much longer. It is critical in such studies that GCaMP expression is maintained at reasonable levels, as overexpression of GCaMP can lead to cellular toxicity and abnormal epileptiform activity (Chen et al., 2013b; Resendez et al., 2016; Steinmetz et al., 2017). We did not observe any evidence for such effects of overexpression in either hemisphere and, although the decay kinetics of measured calcium events were longer in the left hemisphere as compared to the right (likely indicating higher levels of GCaMP in Tet-Off virus-injected left hemisphere PMd), they were nevertheless relatively stable across the entire duration of the study.

The overall stability across sessions in imaging quality and cellular GCaMP signals allowed us to longitudinally track large populations of individual neurons during several weeks to months. We note that the number of putative “same-cell” pairs obtained from the longitudinal registration algorithm described here is sensitive to the inter-neuronal spatial correlation criterion chosen (Figure 2; Figure S5). It will be critical, therefore, to develop improved methods for objectively and quantitatively determining the criterion/threshold in future studies (Sheintuch et al., 2017). Importantly, we show that the longitudinal tracking of neurons allows for the investigation of the functional properties of a circuit over time and the

dynamic relationship between those functional circuit properties and the behaviors they subserve (Figure 4). While these analyses were only meant to be proof-of-concept applications utilizing longitudinally registered cell sets, the observed stability in neuronal selectivity dynamics, which is consistent with results obtained electrophysiologically (Chestek et al., 2007), and the ability to decode reach behavior in sessions days to weeks apart from the training session constitute exciting results worth future study. These types of investigations are particularly valuable for understanding the functional plasticity of circuits in the context of learning and memory paradigms.

It is worth highlighting here several advantages of one-photon microendoscopic calcium imaging as compared to conventional electrophysiology that were confirmed as part of this study. As opposed to electrophysiological approaches that are typically blind to the neuronal subtype identity of recorded neurons (but see Movshon and Newsome, 1996; Lima et al., 2009; Kaufman et al., 2010, 2013; Mitchell et al., 2007; Trainito et al., 2019), optical imaging approaches combined with genetically encoded fluorescent activity indicators such as GCaMP can target and record specifically from a variety of anatomically and genetically defined neuronal subtypes (Luo et al., 2018), with increasing options for similarly doing so in NHP models (Tervo et al., 2016; Dimidschstein et al., 2016; Stauffer et al., 2016; Mehta et al., 2019; Weiss et al., 2020). In the present study, we used two different viral-based strategies to genetically target and image either pan-neuronal or excitatory neuron-biased populations as a first step toward the imaging of more specific cell populations. Another limitation of electrophysiological approaches is the relatively sparse spatial sampling density of today's commercially available multi-electrode arrays, typically having a minimum inter-electrode spacing of approximately 400 μm (Leber et al., 2019; but see Jun et al. [2017] and Trautmann et al. [2019] for use of 20- μm spacing Neuropixels in rhesus macaques). In contrast, cellular-resolution optical imaging enables much higher sampling densities, as evidenced by our study here where we were able to simultaneously record from more than 100 cells per session on average in the left hemisphere PMd (Figures 1 and 2), which equates to a sampling density of approximately 150 cells per mm^2 . This high sampling density allows for critical investigation of microcircuit organization and function typically off limits to electrophysiological approaches. Finally, as already discussed, we confirmed that this imaging approach enables the longitudinal tracking of populations of individual neurons over several months (Figure 2), which is either not possible or extremely challenging with traditional electrophysiological recordings that rely on waveform shape and timing characteristics alone for any attempted certification of neuron identity (Chestek et al., 2007; Ganguly and Carmena, 2009; Fraser and Schwartz, 2012).

This study also confirmed several advantages of one-photon microendoscopic calcium imaging with head-mounted miniscopes in comparison to traditional two-photon microscopy, especially as applied to NHP models. Most two-photon calcium imaging studies to date have relied on transparent cranial windows to optically access the superficial layers of cortex (Sadakane et al., 2015b; Li et al., 2017; Trautmann et al., 2021). In NHPs, these cranial window implants can be challenging to maintain and are associated with a high risk of infection, typically exhibiting a degradation in optical clarity (a "clouding" of the implant) over time due to the proliferation of pia and arachnoid cells and, in some cases, the re-growth of native dura (Arieli et al., 2002; Chen et al., 2002). In our present study, we

confirmed sufficient optical clarity and quality of calcium imaging out to approximately 8 months and discontinued the study for reasons independent of implant integrity. We did not observe evidence of any degradation in optical clarity during the duration of the study and expect that maintenance of proper levels of GCaMP expression is the more critical consideration for chronic, long-term microendoscopic calcium imaging studies in NHPs. Due to the fact that the skull is completely sealed with cement surrounding the GRIN lens, the implant is very low maintenance (requires no cleanings or sterile procedures) and has a low additional risk of infection beyond the standard risks associated with invasive survival surgeries. An additional challenge associated with two-photon microscopy techniques relates to the often cumbersome daily setup and alignment between the microscope objective and the intended imaging plane, which even when refined requires non-negligible time (Choi et al., 2018; Trautmann et al., 2021). In the present study, we show that the implant supports remarkably easy miniscope docking and recording (Video S1) and, in combination with the miniscope's electronic focusing mechanism, enables precise alignment to the intended imaging plane across repeated sessions (Figure 2; Figure S5).

Additional advantages over two-photon microscopy result from the small, head-mounted design of the miniscopes and their seamless coupling to microendoscopic GRIN lenses implanted deep in the brain. These features allowed us to mount two miniscopes on the head and record simultaneously from bilateral PMd (Figure 5). Conventional two-photon microscopy with a single scanning laser beam can only image from one site at a time, although some new approaches to two-photon are pushing these limits (Terada et al., 2018; Yang et al., 2019). The small footprint of the miniscope, in comparison, enables several brain regions to be imaged in true simultaneity. Because the miniscopes are all head-mounted, imaging does not require head fixation as is required for two-photon imaging studies. This, in turn, enables head unrestrained behavior during imaging, which is an important step toward paradigms with more natural, free behavior. Nevertheless, due to the miniscope cable, such studies still require that the macaque be partially restrained in a primate chair as is common practice in most NHP labs. Development of wireless miniscopes, which would enable fully unrestrained and free behavior, should be feasible using the hardware architectures already developed for comparable bandwidths, such as wireless transmission of high channel count electrophysiological recordings in NHPs (Miranda et al., 2010; Gao et al., 2012). Finally, the easy plug-and-play coupling of the miniscopes to the implanted microendoscopic GRIN lens enables access to cortical layers and brain regions deeper than are typically accessible from the brain surface with two-photon microscopy. These limitations can be partially overcome with two-photon imaging of deep layer neuron apical dendrites near the cortical surface combined with post-mortem, cleared-tissue identification of the source neuronal cell bodies (Trautmann et al., 2021). In this study, post-mortem histological assessments indicated that the distal end of the probe was likely situated near the border of layers 3 and 4, and thereby enabled direct imaging of neuronal cell bodies situated at a maximum depth of approximately 1.5 mm below the cortical surface. Direct somal calcium imaging at these depths is well beyond that typically attainable with two-photon imaging from the surface.

Limitations of the imaging approach described herein include potential damage to brain tissue and local circuits resulting from the implantation of a microendoscopic GRIN lens

with a relatively large diameter. These lenses are available in diameters ranging from 0.5 to 1.0 mm, with larger diameters (e.g., 1.0 mm used in this study) offering a larger imaging FOV, but with higher risk of tissue displacement or damage. Two-photon imaging through surface windows offers a less invasive approach, requiring no penetration into the brain, yet, as already discussed, it is limited to depths less than approximately 500 μm , leaving most of the macaque brain inaccessible. Standard electrodes used for electrophysiological recordings in macaques can reach deep into the brain and are typically much thinner (e.g., 35- to 300- μm diameter), although one would need to implant many such electrodes in close proximity to approach the same number and density of cells that can be imaged with a single lens. Furthermore, the size of the GRIN lens used in the present study compares with that of standard deep-brain stimulation (DBS) electrodes that have been used successfully in human patients and in animals with similarly sized brains (Miocinovic et al., 2013; Johnson et al., 2013). Importantly, note that, except for the tissue damage created by the cortical incision made just prior to lens insertion, the actual lens itself may simply displace the remaining tissue without necessarily causing additional damage. More studies are needed to characterize the injury to the brain during implantation and the foreign body response to the chronically implanted lens (Barretto et al., 2011; Kozai et al., 2015; Lee et al., 2016). Another limitation associated with the use of a microendoscopic GRIN lens, particularly when combined with a one-photon miniscope, is the lower spatial resolution as compared to that of a two-photon microscope. While two-photon imaging through surface windows can often resolve static and dynamic signals at the scale of fine anatomical structures such as dendritic spines (Sadakane et al., 2015b; Li et al., 2017), one-photon microendoscopic imaging is typically limited to dynamic signals associated with larger structures such as cell bodies (Ghosh et al., 2011; Resendez et al., 2016). Finally, both one- and two-photon imaging currently rely on calcium indicators with relatively slow kinetics as a measurement of neural activity (Chen et al., 2013b), with significantly poorer temporal resolution, as compared to electrophysiological measurements. This has imposed certain limitations on the use of existing data-driven approaches to infer underlying cortical dynamics from population recordings. However, the calcium imaging community is developing computational tools including hidden variable state spaces and dimensionality reduction techniques (Kato et al. 2015, Linderman et al. 2019; Wei et al., 2020) suited for the lower temporal resolution optical signals. We think that these and future developments will provide a framework for probing cortical dynamics with the relatively sparser optical measurements. Moreover, the development of genetically encoded fluorescent voltage indicators (Villette et al., 2019; Knöpfel and Song, 2019) promises to overcome this limitation in the near future.

In order to take full advantage of head-mounted microendoscopic calcium imaging in behaving macaques, future studies should focus on several key areas of development. First, it is important to further streamline the surgical workflow to enable virus injections and lens implantations functionally targeted and precisely aligned to each other and to the brain regions of interest. Virus-coated GRIN lenses (e.g., Proview express probes; Inscopix) could completely obviate the need for alignment between separate virus injection and lens implantation surgeries, combining all components of the imaging preparation into a single surgery and a single penetration into the brain. Second, new viral strategies and longer GRIN lenses will be important for targeting specific cell types and deeper brain regions,

respectively. Given the small size of the miniscope, it is possible to target several (beyond just two as shown here) brain regions simultaneously to investigate multiple nodes of the networks underlying complex behavior. As studies increasingly seek to record from the NHP brain in more naturally behaving conditions, development of a miniscope capable of wireless transmission will be critical. Finally, combining miniscope calcium imaging with optogenetic stimulation (e.g., nVoke system, Inscopix; Stamatakis et al., 2018) or electrophysiology would allow for important studies testing the causal relationship between the functional properties of a circuit and the relevant behavior. Together with these future developments, microendoscopic calcium imaging with head-mounted miniscopes in NHPs will enable important new insights into the neural circuit mechanisms underlying clinically relevant human behavior and will help to advance our understanding of and ability to develop effective therapies for neurodegenerative and neuropsychiatric disorders.

STAR★METHODS

RESOURCE AVAILABILITY

Lead contact—Further information and requests for resources and reagents should be directed to and will be fulfilled by the Lead Contact, Jonathan Nassi (jnassi@inscopix.com).

Materials availability—This study did not generate new unique reagents.

Data and code availability—Datasets and custom code generated during the study are available from the corresponding author upon request.

EXPERIMENTAL MODEL AND SUBJECT DETAILS

The rhesus macaques were obtained from the California National Primate Research Center (CNPRC) at UC Davis as part of a Pilot Research Program awarded to the authors. The study used two healthy adult male monkeys, 5–8 years of age and weighing 13–14 kg. Animals were housed at the CNPRC at UC Davis. All experiments were conducted in compliance with the NIH Guide for the Care and Use of Laboratory Animals and were approved by the Institutional Care and Use Committee at the University of California, Davis.

METHOD DETAILS

Behavioral training—The animals were trained through positive reinforcement to exit their enclosure and enter a standard primate chair in which the animal could sit comfortably with a neck plate preventing the animal from reaching toward its head. We habituated the animal to progressively longer times sitting in the chair, as well as to soft cushions pressed lightly against the sides of the animal's head in order to temporarily restrain the head during docking and undocking of the miniscope. The animals were then trained on a reach to reward task. For this task, the animal was seated in the primate chair at a distance of 15 cm from a tray with two predefined zones where food rewards were presented (Figures 3A and 5A). The experimenter was seated behind a panel in front of the animal and placed food rewards, through an opening in the panel, in one of the two zones chosen at random across trials. A trial began with placement of the reward followed by the animal reaching for the reward with one of the arms. A new trial began after the animal had consumed the reward

from the previous trial and the arm and hand returned to a rest location on the primate chair. During a session the animal performed either a 'single arm task' or a 'dual arm task'. In the single arm task, the animal was allowed to use only one arm to reach to the reward zones and the allowed arm was alternated in a block design (Figure 3A and S6A). In the dual arm task, the animal was required to use the arm directly in front of the zone, right arm to zone 1 and left arm to zone 2 (Figure 5A). Arm use was controlled by opening or closing small openings in the front panel of the primate chair. The animal was trained to perform this task for progressively longer periods of time and more trials. Only positive reinforcement was used at all stages of training.

Surgical procedures—Prior to any surgeries, we obtained MR scans (3T, GE Medical Systems) from the animals in order to determine, in combination with a standard atlas, the stereotaxic coordinates for bilateral craniotomies aligned to the cortical sites (e.g., dorsal premotor cortex) targeted for virus injections and lens implantations. All of the surgical procedures that follow are depicted in schematic form (Figure S1).

To perform virus injections, the animals were sedated and placed into a stereotaxic frame. In a first monkey (macaque 1), used only for virus testing (Figure 1B; Figure S2), a single large craniotomy and durotomy were made over fronto-parietal cortex and multiple injections of different viruses at varying titers were made using pulled glass micropipettes (tip diameter approximately 25 μm , 1.14 mm max outer diameter) back-filled with mineral oil and connected to a microprocessor-controlled injector (NANOLITER2010; WPI, Inc.) for small volume injections. For AAV1.CaMK2a.GCaMP6f.WPRE.SV40 (UPenn Vector Core), 1 μL of fully concentrated virus ($2.3\text{E}+13$ GC/ml) was injected at depths of approximately 0.8–1.2 and 1.6–1.8 mm from the cortical surface for a total volume of 2 μL at each of two separate cortical sites. For the Tet-Off virus system (Salk Vector Core), AAV5.mThy1PSs.tTAad (titer: $4.35\text{E}+11$ GC/ml) and AAV5.TRE3.GCaMP6f (titer: $4.16\text{E}+11$ GC/ml) were first mixed together in equal volumes (1:1) for final titers for injection of half their original values and then 500 nL was injected at depths of approximately 0.8–1.2 and 1.6–1.8 mm from the cortical surface for a total volume of 1 μL at each of two separate cortical sites. Finally, we diluted with sterile PBS the 1:1 mixed viruses down to a 1:8 concentration and made similar injections at two additional cortical sites. Once all injections were complete, the dura and skull were replaced and the animal was allowed to recover and survived for 8 weeks prior to being euthanized and the brain perfused and extracted for post-mortem processing and histological examination.

In a second monkey (macaque 2), used for all of the imaging results reported in this study, we first made two craniotomies centered over dorsal premotor cortex in both the left and right hemispheres (Figures S1 and S2). Craniotomies were approximately 10 mm in diameter with an additional 2.5 mm of thinned bone surrounding the entire perimeter of the craniotomy so that the skull would not later prevent the microendoscopic lens from reaching the desired final depth in the brain. Following completion of the craniotomies, small (approximately 3–5 mm in diameter) durotomies were made and final coordinates for virus injections were determined based on visualization of sulcal/gyral landmarks. In the right hemisphere PMd, AAV1.CaMK2a.GCaMP6f.WPRE.SV40 (UPenn Vector Core, titer: $2.3\text{E}+13$ GC/ml) was injected at 2 cortical sites separated by approximately 1.5 mm in the

medial-lateral axis. At each site we injected 800 nL at depths of approximately 1.2 and 2.0–2.2 mm from the cortical surface for a total volume of 1.6 μ l. In the left hemisphere PMd, a 1:1 mix of AAV5.mThy1PSs.tTAad (final mixed titer: 2.18E+11 GC/ml) and AAV5.TRE3.GCaMP6f (final mixed titer: 2.08E+11 GC/ml) was injected at 2 cortical sites, again separated by approximately 1.5 mm in the medial-lateral axis. At each site we injected 500 nL at depths of approximately 1.2 and 2.0–2.2 mm from the cortical surface for a total volume of 1 μ l. In all cases, injections were made at a rate of 100 nl/min and we waited approximately 10 minutes following the final injection at each site before removing the pipette from the brain. During injections, we took several photos so that we could document the location of the micropipette relative to the vessel pattern on the cortical surface. After the injections were complete, we placed four fiducial marks on the skull surrounding each of the two craniotomies to further aid in our efforts to later align lens implantation to the cortical sites injected with virus. These fiducial marks consisted of small burr-sized divots in the skull with ink placed inside and a drop of silicone elastomer (Kwik-Sil; WPI, Inc.) over the top to protect the ink from being washed away between surgeries. The four fiducial marks were placed along the ML and AP axes just beyond the perimeter of each craniotomy, aligned with the midpoint between the pair of injection sites. We measured and documented the distances from the midpoint between injections and each of these four fiducial marks. Finally, we implemented several steps to seal the durotomy and craniotomy so as to minimize neovascularization and growth of granulation tissue between surgeries. We placed artificial dura (Preclude PDX dura substitute, Gore, DE) between the cortical surface and native dura and sealed the flaps of native dura on top of the artificial dura with sterile surgical glue (Dermabond advanced, Ethicon). A second piece of artificial dura was then placed over the native dura and a thin layer of silicone elastomer was placed on top to fill in the empty volume of the craniotomy. A stainless steel metal disc (13–15 mm diameter) was placed on top of the skull, within the thinned region of bone, and sealed and secured with a combination of bone wax along its seam with the skull and a metal strap overlaying the disc and screwed to the skull. The animal's muscle and skin were replaced and sutured to its original position over the craniotomies and the animal was allowed to recover.

Two weeks following the virus injection surgery, the animal was again sedated and placed in a stereotaxic frame for lens implantations. Once the craniotomy and durotomy were re-exposed, we used the vessel pattern on the cortical surface and measurements relative to the fiducial marks to re-identify the sites of virus injection made previously. We then made an incision in the cortex using a #11p scalpel blade (Swann-Morton, UK) approximately 2.0 mm deep and 1.2 mm across in the AP axis perpendicular to the axis of the virus injection sites. The incision was made twice, once in each direction along the AP axis, to ensure a complete incision 1.2 mm across (Kondo et al., 2018). This was immediately followed by insertion of a microendoscopic GRIN prism lens with integrated miniscope baseplate (1 mm diameter, 9 mm length ProView Integrated Prism Lens; Inscopix, Inc.) aligned to the incision site. The prism probe was inserted at a rate of approximately 500 μ m/min. to a final depth of approximately 2.0 mm from the cortical surface. Once the lens was at its final depth, we placed a layer of silicone elastomer over the exposed brain surrounding the lens. We then placed a metal disc (13–15 mm diameter) over the craniotomy, with a 2 mm wide slot running half its diameter to allow for the lens to pass through. We sealed the slot in the

metal disc with silicone elastomer and then proceeded to chronically secure the lens to the skull by placing around the lens an aluminum cranial chamber (3 mm height, 17 mm diameter) and embedding the lens within a combination of cement (Metabond, Parkell, NY) and acrylic inside the cranial chamber. The cranial chamber was chronically secured to the skull with a combination of acrylic and several skull screws resulting in a single, large acrylic headcap securing both chambers bilaterally. A removable chamber cap was placed on each chamber to protect the miniscope baseplate and lens from debris or damage between imaging sessions. The animal was allowed to recover for two weeks prior to the first calcium imaging session.

Imaging during behavioral sessions—Calcium imaging signals were acquired using the nVista system (Inscopix, Inc., Palo Alto, CA), which includes a miniscope (nVista 3.0) that docks to the baseplate-integrated lens implanted in the brain (Figure 1A). The signals are transferred by a thin, flexible cable to the data acquisition system (DAQ) where they are recorded and saved. Imaging parameters, including frame rate, LED power, sensor gain and electronic focus were all controlled using the Inscopix Data Acquisition Software (IDAS; Inscopix, Inc.) running in a web browser (Chrome, Firefox) on a computer that communicated wirelessly with the DAQ. The animal's motor reach behavior was monitored by overhead camera (Allied Vision, Stingray F-033C) and recorded using the CinePlex system (Plexon Inc., Dallas, Texas) controlled by CinePlex software running on a separate, dedicated computer. The calcium imaging and behavior monitoring were synchronized by sending TTLs corresponding to each nVista frame capture, from the imaging system to the behavioral monitoring system. Additionally, recordings on the behavioral monitoring system were triggered by the Inscopix imaging system, again via TTL. When performing multisite imaging simultaneously from both hemispheres, a second nVista 3.0 system was used that also sent synchronizing TTLs to the behavioral monitoring system.

Daily sessions combining imaging and behavior began by first positioning the animal seated in the primate chair in the experimental setup (described above). The animal's head was temporarily (approximately 5 minutes) restrained with soft cushions pressed against the sides of the head to allow for removal of the chamber cap and miniscope baseplate cover followed by docking and securement (by tightening a single set screw) of the miniscope to the baseplate (Figure 1A; Video S1). The animal's hands were tracked in real-time using the CinePlex 'color tracking' mode, and the top of the animal's hands were shaved and painted with colored (pink or purple) ink for this purpose. During a session the animal performed either the 'single arm' task or the 'dual arm' task (see above). During a typical session the animal performed approximately 250 trials, and data collection lasted about one hour. At the end of data collection, the animal's head was again temporarily restrained to undock the miniscopes and replace the cap on the chamber. Calcium imaging signals were acquired at 20 Hz (LED power density 0.4 mW/mm²; gain 5) in the left hemisphere and at 10 Hz (LED power 0.8–1.0 mW/mm²; gain 7) in the right hemisphere. The excitation wavelength was 475 nm for all recordings and the excitation LED remained on throughout the entire duration of each session.

Doxycycline administration and testing—To study how Doxycycline (Dox) regulates transgene (i.e., GCaMP) expression of the AAV Tet-Off system, Dox was administered (15 mg/kg; 5 days) orally by mixing it with food. Calcium imaging signals were acquired prior, during and up to 6 weeks after cessation of Dox administration to quantify changes in calcium imaging performance (fluorescence levels, cell numbers, calcium event kinetics) thought to correlate with levels of GCaMP expression (Figure S4A). As expression levels decrease within cells, the decay time constants will shorten and as expression levels increase decay time constants will lengthen - whereas the number of cells, for instance, tracks in a more binary way how many cells have minimally detectable levels of GCaMP. Average field-of-view fluorescence is less binary than measuring number of cells, but is primarily tracking baseline fluorescence levels in cells rather than dynamic signal in cells and, therefore, is not particularly sensitive to GCaMP expression levels beyond a certain range.

Sedated blood flow imaging—The one-photon miniscope has been used previously to perform *in vivo* blood flow imaging in rodents (Ghosh et al., 2011). To study the feasibility of blood flow imaging in the macaque brain the animal was sedated and administered Fluorescein (AK-Fluor 10%, Akorn Inc., IL) intravenously through an IV line placed in the arm. 1–2 mL Fluorescein was injected at a rate of 1 ml/min either manually or with the aid of an injection pump. Additionally, a slow drip (0.1 ml/min) of Fluorescein was given to maintain stable fluorescence intensity levels during the imaging session. Imaging signals were acquired starting a few seconds before Fluorescein administration and lasted approximately 15 mins (Video S4).

Post-mortem assessment—For post-mortem assessment, animals were euthanized and transcardially perfused with saline, and then a series of 4% paraformaldehyde alone, followed by 10% and 20% sucrose in 4% paraformaldehyde. The brains were carefully extracted and soaked in 30% sucrose in 4% paraformaldehyde for 24 hours prior to being placed in 30% sucrose in PBS for several days. Once the brain was sufficiently cryoprotected with sucrose, we cut 50 μ m thick coronal sections of the brain on a freezing microtome. Sections that included the injection sites and lens implantation sites were stained for cell nuclei (DAPI), mounted on slides and coverslipped for conventional benchtop fluorescence microscopy. GCaMP expression patterns and expression levels were assessed based on native GCaMP fluorescence. No antibody staining was conducted.

To compare GCaMP expression levels across cases, we used ImageJ to draw regions of interest (ROIs) and calculate the integrated fluorescence density within these ROIs. These values were normalized by the area of each ROI and the exposure time used to capture the image. For each virus injection site of either the Tet-Off virus system or the conventional CaMK2a virus we made these measurements with an ROI centered within the region of peak expression and subtracted from that a second ROI centered within a region without expression (background fluorescence within the same tissue section). An average was taken across the two separate virus injection sites tested for each virus.

QUANTIFICATION AND STATISTICAL ANALYSIS

Please note that statistical details are found in the figure legends.

Behavioral tracking—CinePlex Editor software (Plexon Inc, TX) was used to track the reach trajectories offline and to identify the times when the animal's hand entered the reward zones. Although the animal was required to bring the hand to a 'rest' position before a trial began, the orientation of the hand was often variable, which made it difficult to reliably identify when the hand was in the 'rest' position. We therefore used the timing of reward zone entries, which were more reliably identified, to study the reach related modulation of the calcium imaging signals.

Image processing—The calcium imaging videos were processed using a custom pipeline developed using the Inscopix Data Processing Software (IDPS; Inscopix, Inc.) application programming interface (API). The processing pipeline includes a first step that corrects defective pixels, appropriately spatially crops the FOV, and spatially downsamples (4X) each of the imaging frames to reduce the size of the data while maintaining acceptable resolution and SNR (1280×800 pixels before downsampling and 320×200 pixels after downsampling). Pixel size is ~1.04 microns per pixel after taking into account the magnification of the lens probe. The video frames were then spatially filtered (band-pass) with cut-offs set to 0.005 pixel⁻¹ (low) and 0.5 pixel⁻¹ (high). Following spatial filtering the imaging frames were corrected for brain movement artifacts associated with respiration and head-unrestrained behavior using a standard rigid translation algorithm (Thévenaz et al., 1998). Cell segmentation and extraction of calcium activity traces of individual cells was performed by using the CNMFe algorithm (Zhou et al., 2018) on the motion-corrected imaging frames. The observed imaging data is modeled as an additive superposition of all cells' spatiotemporal activity, time-varying background and noise. Each cell is characterized by its spatial footprint characterizing the cell's shape and location. Segmented cells were manually curated and cells with discontinuous and non-cell-like shapes or cells with activity traces with non-calcium like events (e.g., blood vessels falsely identified as cells) were discarded. Accepted cells and their activity traces were exported to MATLAB (MathWorks, MA) for further analysis. For the activity traces we used unit dF to denote change in calcium related activity and is a non-normalized version of the more common dF/F. This choice of unit is appropriate as CNMFe models the activity trace as an AR (auto regressive) process with no constant term, or with zero baseline (Zhou et. al., 2018).

Head movement and motion correction—The motion correction algorithm (Thévenaz et al., 1998) applies to each frame a translation that minimizes the difference between the transformed frame and the reference frame. The 'mean frame', which is the average of all frames following spatial filtering, was used as the reference frame. The median of the applied motion correction translations for each frame was taken as an estimate of the movement induced noise during imaging. The efficacy of the motion correction algorithm in mitigating the animal movement-induced motion artifacts in the imaging data was evaluated by estimating the correlation between the head movement and the average signal intensity of an ROI defined at the edge of a large blood vessel in the imaging FOV (Figure 1C). Head movement was estimated offline by tracking one of the chamber caps or the miniscope using the CinePlex Editor software (Plexon Inc, TX) as described above. Average signal intensity in a 34×50 μm ROI was estimated for each frame before and after applying motion correction and correlated with head movement using Pearson linear correlation.

Cell maps and basic cell metrics—Cell maps containing spatial footprints of all cells were generated as the average of the normalized cell images of individual cell footprints. Average fluorescence across the FOV was estimated after rectangularly cropping the raw imaging frames to exclude pixels outside the perimeter of the lens. Calcium events were determined from the CNMFe extracted (dF) calcium activity traces for each cell using a custom algorithm in the IDPS API. Briefly, the algorithm first identifies time points where the slope of the calcium activity trace changes from positive to negative ($p > n$) and from negative to positive ($n > p$) resembling a monotonic rise followed by an exponentially decaying calcium event. For all of the $p > n$ points, it then takes the activity value of the previous $n > p$ plus the scaled median absolute deviation (MAD) to calculate a dynamic activity threshold curve. The scaling parameter is set by the event minimal size parameter (set to 4 here). Events are detected whenever the calcium activity time trace goes above the dynamic event detection threshold. The final rising event times are determined after removing any event times for which the decay after the entered tau-off parameter (set here to 0.2 s) is greater than expected assuming a single-exponential decay model. Rise and decay times and SNR are estimated around each identified event and summarized for each cell by taking the median value. SNR is estimated as the ratio between the median amplitude of the trace at event times divided by the MAD of the trace.

The calcium related activity trace contains ‘calcium events’ which are thought to correspond to increases in the action potential (spike) firing rate of the cell. A single action potential results in a quick rise and slow decay of calcium related activity akin to an impulse response function, and temporally close firing of action potentials results in a large amplitude calcium event (Figure 1E). This partially explains the discrepancy between typical spiking rates observed in PMd and calcium event rates reported here. Average population spike rates in PMd under similar behavioral paradigms range from less than 5 spikes/s at baseline to around 30 spikes/s at the time of movement (Kaufman et. al., 2010). The rise and decay time constants depend on a number of factors, e.g., GCaMP sensor type (Chen et. al., 2013b), cell type and species (Wei et. al., 2020). Furthermore, the exposure time of the imaging sensor used during imaging will also govern the temporal dynamic of the recorded activity and the calcium events, especially at lower sampling rates (or larger exposure times). These factors can have a bearing on how the recorded activity reflects coding for stimuli or behavior and can result in discrepancies between analysis performed with calcium related activity or electrophysiology (Wei et. al., 2020), although the results in the present study, e.g., the heterogeneous spatial organization of selectivity for direction of reach, are broadly consistent with those found using electrophysiology.

Reach-related calcium activity analysis—Rasters of calcium events were constructed by aligning them around the time of reach entry into reward zones. Peri-event histograms were constructed by estimating the average number of events in 1 s sliding window with a step size of 0.5 s. Heatmaps showing task related modulation of population calcium activity were constructed after z-scoring the average peri-event calcium activity traces. Cells in the heatmaps were sorted by their selectivity to reach direction or hand used. Cells were characterized as reach-modulated cells if the activity during reach was significantly modulated during the reach epoch ([0 1]s interval with respect to reward zone entry)

compared to a baseline epoch ($[-3 -2]$ s interval with respect to reward zone entry). The average of the calcium activity trace in the reach and baseline epochs were used as signal and noise respectively to compute the area under the receiver operator characteristic curve (AUC). Bootstrap resampling was used to estimate 95% confidence intervals. Reach direction selectivity of each cell was characterized by estimating a tuning index (TI),

$$TI = (Ca^{Z1} - Ca^{Z2}) / (|Ca^{Z1}| + |Ca^{Z2}|)$$

where Ca^{Z1} and Ca^{Z2} are the average calcium activity traces in $[0 1]$ s intervals with respect to entry into reward zones 1 and 2 respectively. Bootstrap resampling was used to estimate 95% confidence intervals.

To investigate whether cells that were similarly selective were spatially clustered together, we estimated among the reach modulated cells the frequency with which the closest neighboring cell was similarly selective. For significance testing this estimate was compared to a null distribution generated by multiple (100) random shuffles of the cell labels (permutation test). To investigate whether the prevalence of reach direction selectivity depended on the depth in cortex, we estimated, among the reach modulated cells, the proportion of cells that were selective as a function of cortical depth using $75 \mu\text{m}$ windows with step size of $3 \mu\text{m}$.

Decoding—Reach related modulation of calcium activity traces allowed for decoding of the animal's behavior on individual trials. Decoding accuracy was computed as a function of time ($[-2 2]$ s) around the time of reward zone entry. Partial Least-squares Discriminant Analysis (PLS-DA) with leave one out cross-validation was used to predict the animal's reach direction using calcium activity traces in a 400 ms sliding window, and a 100 ms step size, around the time of reach. 95% confidence intervals and standard errors were computed from Monte Carlo bootstrap distributions simulated from $R = 50$ random draws with replacement from sample datasets. Reach direction could also be decoded with discrete times of calcium events instead of the continuous activity traces. Logistic regression with 10-fold cross-validation was used on population activity in a 2 s sliding window, and a 100 ms step size. Chance level decoding accuracy was characterized by repeating the decoding analysis after shuffling the reach direction labels across trials. Peak decoding accuracy within the $[-2 2]$ s window around the time of reach was noted to plot decoding accuracy across sessions. Dependence of decoding accuracy on the number of cells was investigated by averaging the peak decoding accuracy estimated during multiple random subsamples of cells.

Longitudinal registration—We registered cells across multiple sessions based on the similarity in their spatial footprints by using a custom algorithm in IDPS that is similar to the one described in Sheintuch et. al (2017). The registration is performed in two steps: cell map alignment and cell matching. Specifically, for each session, we generated a cell map as the average of the normalized cell images of individual cell footprints (S_{pc}) extracted using CNMFe

$$S_p = \frac{1}{C_p} \sum_{C=1}^{C_p} S_{pc}$$

where C_p is the number of cells. We then aligned each cell map (S_p) to a reference map (S_r) using the enhanced correlation coefficient (*ECC*) image registration algorithm (Evangelidis and Psarakis, 2008), a rigid transformation that allows for translation and rotation. When registering cells between two sessions (e.g., Figures 2D and 4; Figures S5A and S5B), one of the sessions acted as the reference map. The cell map from the session closest to the midpoint between the first and last session was used as the reference map when tracking the same cells through more than two sessions (e.g., Figure 2F; Figure S5C).

The rectangular region for which all of the aligned cell maps overlapped was computed and defined as the common and registered FOV (R) for all sessions. The estimated transformation (T_p) and overlap region of each cell map was applied to the individual cell footprints S_{pc} , resulting in registered footprints S'_{pc} .

$$T_p = [ECC(S_p \circ T, S_r)]$$

$$S'_{pc}(x, y) = (s_{pc} \circ T_p)(x, y) \quad \forall (x, y) \in R$$

Registered footprints all have the same number of pixels, and the registered footprint of the same cell in different sessions should mostly overlap. Some cells may only be active in particular sessions and, therefore, would not overlap (match) with any cell footprint in other sessions. In order to find all unique cells (with or without matching cells) present in this longitudinal study, we defined a global cell set that is initialized to be all of the cells in the reference session, and then incrementally modified this global cell set by finding matches between it and other aligned cell sets. For each cell in an aligned cell set, we chose the cell in the current global cell set that had the highest normalized cross correlation (*NCC*). If the highest *NCC* passed a set threshold, it was identified as a match to the existing global cell, and we updated the global cell footprint as the mean of all matched footprints; otherwise, the cell was treated as a new cell added into the global cell set. The matching process was repeated until there were no possible matches with a correlation above the set threshold. We profiled the matching results with a series of *NCC* thresholds, and reported results for 0.3, 0.5 and 0.7.

Longitudinal relationship between calcium activity and behavior—Calcium imaging allows for tracking of a subset of cells across sessions and days. Changes in reach direction selectivity across sessions was characterized by evaluating correlation between tuning indices and the difference in tuning indices for cells tracked between a pair of sessions. Similarly, tracking the cells across sessions allowed for prediction of behavior during a (test) session by using a decoding model trained on a different (training) session, showing that decoding model training can transfer between sessions. Within session

decoding was performed by leave-one-out cross-validation as described above. Across session decoding was performed using a decoding model trained on all trials in the training session. Chance level decoding accuracy was estimated by repeating the decoding analysis after randomly shuffling the labels of the longitudinally tracked cells between sessions. The transfer of decoding model training was further characterized by taking the ratio of decoding accuracy during the test session and the training session and plotting this ratio as a function of the intersession interval (Figure 4E).

Supplementary Material

Refer to Web version on PubMed Central for supplementary material.

ACKNOWLEDGMENTS

This research was funded by a California National Primate Research Center (CNPRC) Pilot Research Program award to J.M.C., J.J.N., and K.A.M., and by National Institutes of Health/NINDS grant R01NS097480 and Bakar Fellow Funds from UC Berkeley to J.M.C. and a Defense Advanced Research Projects Agency (DARPA) Biological Technology Office (BTO) "NeuroFAST" Award W911NF-14-2-0013. We are grateful to Morrison lab member Sean Ott for virus preparation support and the CNPRC staff for support with behavioral training, surgery, pathology, and general care of animals. We thank Inscopix staff, including Arash Tajik, Sam Malanowski, Evan DeJarnette, and Mark Trulson, for supporting design, manufacturing, and testing of custom imaging components and David Cheng for testing of viruses. We thank Moxon lab members Ashley Schnider and Megan Santos for support with offline tracking of reaching behavior. We appreciate the helpful comments on the manuscript from Drs. Krishna Shenoy, Alice Stamatakis, Mark Miller, and Shay Neufeld.

REFERENCES

- Arieli A, Grinvald A, and Slovin H (2002). Dural substitute for long-term imaging of cortical activity in behaving monkeys and its clinical implications. *J. Neurosci. Methods* 114, 119–133. [PubMed: 11856563]
- Barretto RPJ, Ko TH, Jung JC, Wang TJ, Capps G, Waters AC, Ziv Y, Attardo A, Recht L, and Schnitzer MJ (2011). Time-lapse imaging of disease progression in deep brain areas using fluorescence microendoscopy. *Nat. Med* 17, 223–228. [PubMed: 21240263]
- Capitanio JP, and Emborg ME (2008). Contributions of non-human primates to neuroscience research. *Lancet* 371, 1126–1135. [PubMed: 18374844]
- Chen LM, Heider B, Williams GV, Healy FL, Ramsden BM, and Roe AW (2002). A chamber and artificial dura method for long-term optical imaging in the monkey. *J. Neurosci. Methods* 113, 41–49. [PubMed: 11741720]
- Chen JL, Andermann ML, Keck T, Xu N-L, and Ziv Y (2013a). Imaging neuronal populations in behaving rodents: Paradigms for studying neural circuits underlying behavior in the mammalian cortex. *J. Neurosci* 33, 17631–17640. [PubMed: 24198355]
- Chen T-W, Wardill TJ, Sun Y, Pulver SR, Renninger SL, Baohan A, Schreiter ER, Kerr RA, Orger MB, Jayaraman V, et al. (2013b). Ultrasensitive fluorescent proteins for imaging neuronal activity. *Nature* 499, 295–300. [PubMed: 23868258]
- Chestek CA, Batista AP, Santhanam G, Yu BM, Afshar A, Cunningham JP, Gilja V, Ryu SI, Churchland MM, and Shenoy KV (2007). Single-neuron stability during repeated reaching in macaque premotor cortex. *J. Neurosci* 27, 10742–10750. [PubMed: 17913908]
- Choi J, Goncharov V, Kleinbart J, Orsborn A, and Pesaran B (2018). Monkey-MIMMS: towards automated cellular resolution large-scale two-photon microscopy in the awake macaque monkey. *Annu. Int. Conf. IEEE Eng. Med. Biol. Soc* 2018, 3013–3016.
- Cisek P, and Kalaska JF (2005). Neural correlates of reaching decisions in dorsal premotor cortex: Specification of multiple direction choices and final selection of action. *Neuron* 45, 801–814. [PubMed: 15748854]

- Deisseroth K (2015). Optogenetics: 10 years of microbial opsins in neuroscience. *Nat. Neurosci* 18, 1213–1225. [PubMed: 26308982]
- Dimidschstein J, Chen Q, Tremblay R, Rogers SL, Saldi G-A, Guo L, Xu Q, Liu R, Lu C, Chu J, et al. (2016). A viral strategy for targeting and manipulating interneurons across vertebrate species. *Nat. Neurosci* 19, 1743–1749. [PubMed: 27798629]
- Ebina T, Masamizu Y, Tanaka YR, Watakabe A, Hirakawa R, Hirayama Y, Hira R, Terada S-I, Koketsu D, Hikosaka K, et al. (2018). Two-photon imaging of neuronal activity in motor cortex of marmosets during upper-limb movement tasks. *Nat. Commun* 9, 1879. [PubMed: 29760466]
- Evangelidis GD, and Psarakis EZ (2008). Parametric image alignment using enhanced correlation coefficient maximization. *IEEE Trans. Pattern Anal. Mach. Intell* 30, 1858–1865. [PubMed: 18703836]
- Foster JD, Nuyujukian P, Freifeld O, Gao H, Walker R, I Ryu S, H Meng T, Murmann B, J Black M, and Shenoy KV (2014). A freely-moving monkey treadmill model. *J. Neural Eng* 11, 046020. [PubMed: 24995476]
- Fraser GW, and Schwartz AB (2012). Recording from the same neurons chronically in motor cortex. *J. Neurophysiol* 107, 1970–1978. [PubMed: 22190623]
- Ganguly K, and Carmena JM (2009). Emergence of a stable cortical map for neuroprosthetic control. *PLoS Biol.* 7, e1000153. [PubMed: 19621062]
- Gao H, Walker RM, Nuyujukian P, Makinwa KAA, Shenoy KV, Murmann B, and Meng TH (2012). HermesE: A 96-channel full data rate direct neural interface in 0.13 μm CMOS. *IEEE J. Solid-State Circuits* 47, 1043–1055.
- Garg AK, Li P, Rashid MS, and Callaway EM (2019). Color and orientation are jointly coded and spatially organized in primate primary visual cortex. *Science* 364, 1275–1279. [PubMed: 31249057]
- Ghosh KK, Burns LD, Cocker ED, Nimmerjahn A, Ziv Y, Gamal AE, and Schnitzer MJ (2011). Miniaturized integration of a fluorescence microscope. *Nat. Methods* 8, 871–878. [PubMed: 21909102]
- Gilja V, Chestek CA, Nuyujukian P, Foster J, and Shenoy KV (2010). Autonomous head-mounted electrophysiology systems for freely behaving primates. *Curr. Opin. Neurobiol* 20, 676–686. [PubMed: 20655733]
- Gulati S, Cao VY, and Otte S (2017). Multi-layer cortical Ca^{2+} imaging in freely moving mice with prism probes and miniaturized fluorescence microscopy. *J. Vis. Exp* (124), 55579.
- Hamel EJO, Grewe BF, Parker JG, and Schnitzer MJ (2015). Cellular level brain imaging in behaving mammals: An engineering approach. *Neuron* 86, 140–159. [PubMed: 25856491]
- Jennings JH, and Stuber GD (2014). Tools for resolving functional activity and connectivity within intact neural circuits. *Curr. Biol* 24, R41–R50. [PubMed: 24405680]
- Johnson MD, Lim HH, Netoff TI, Connolly AT, Johnson N, Roy A, Holt A, Lim KO, Carey JR, Vitek JL, and He B (2013). Neuromodulation for brain disorders: Challenges and opportunities. *IEEE Trans. Biomed. Eng* 60, 610–624. [PubMed: 23380851]
- Ju N, Jiang R, Macknik SL, Martinez-Conde S, and Tang S (2018). Long-term all-optical interrogation of cortical neurons in awake-behaving nonhuman primates. *PLoS Biol.* 16, e2005839. [PubMed: 30089111]
- Jun JJ, Steinmetz NA, Siegle JH, Denman DJ, Bauza M, Barbarits B, Lee AK, Anastassiou CA, Andrei A, Aydın Ç, et al. (2017). Fully integrated silicon probes for high-density recording of neural activity. *Nature* 551, 232–236. [PubMed: 29120427]
- Kato S, Kaplan HS, Schrödel T, Skora S, Lindsay TH, Yemini E, Lockery S, and Zimmer M (2015). Global brain dynamics embed the motor command sequence of *Caenorhabditis elegans*. *Cell* 163, 656–669. [PubMed: 26478179]
- Kaufman MT, Churchland MM, Santhanam G, Yu BM, Afshar A, Ryu SI, and Shenoy KV (2010). Roles of monkey premotor neuron classes in movement preparation and execution. *J. Neurophysiol* 104, 799–810. [PubMed: 20538784]
- Kaufman MT, Churchland MM, and Shenoy KV (2013). The roles of monkey M1 neuron classes in movement preparation and execution. *J. Neurophysiol* 110, 817–825. [PubMed: 23699057]

- Knöpfel T, and Song C (2019). Optical voltage imaging in neurons: moving from technology development to practical tool. *Nat. Rev. Neurosci* 20, 719–727. [PubMed: 31705060]
- Kondo T, Saito R, Otaka M, Yoshino-Saito K, Yamanaka A, Yamamori T, Watakabe A, Mizukami H, Schnitzer MJ, Tanaka KF, et al. (2018). Calcium transient dynamics of neural ensembles in the primary motor cortex of naturally behaving monkeys. *Cell Rep.* 24, 2191–2195.e4. [PubMed: 30134178]
- Kozai TDY, Jaquins-Gerstl AS, Vazquez AL, Michael AC, and Cui XT (2015). Brain tissue responses to neural implants impact signal sensitivity and intervention strategies. *ACS Chem. Neurosci* 6, 48–67. [PubMed: 25546652]
- Kurata K (1993). Premotor cortex of monkeys: Set- and movement-related activity reflecting amplitude and direction of wrist movements. *J. Neurophysiol* 69, 187–200. [PubMed: 8433130]
- Leber M, Körner J, Reiche CF, Yin M, Bhandari R, Franklin R, Negi S, and Solzbacher F (2019). Advances in penetrating multichannel microelectrodes based on the utah array platform. *Adv. Exp. Med. Biol* 1101, 1–40. [PubMed: 31729670]
- Lee SA, Holly KS, Voziyarov V, Villalba SL, Tong R, Grigsby HE, Glasscock E, Szele FG, Vlachos I, and Murray TA (2016). Gradient index microlens implanted in prefrontal cortex of mouse does not affect behavioral test performance over time. *PLoS ONE* 11, e0146533. [PubMed: 26799938]
- Li M, Liu F, Jiang H, Lee TS, and Tang S (2017). Long-term two-photon imaging in awake macaque monkey. *Neuron* 93, 1049–1057.e3. [PubMed: 28215557]
- Lima SQ, Hromádka T, Znamenskiy P, and Zador AM (2009). PINP: A new method of tagging neuronal populations for identification during in vivo electrophysiological recording. *PLoS ONE* 4, e6099. [PubMed: 19584920]
- Linderman S, Nichols A, Blei D, Zimmer M, and Paninski L (2019). Hierarchical recurrent state space models reveal discrete and continuous dynamics of neural activity in *C. elegans*. *bioRxiv*, org/10.1101/621540.
- Luo L, Callaway EM, and Svoboda K (2018). Genetic dissection of neural circuits: A decade of progress. *Neuron* 98, 865. [PubMed: 29772206]
- Mehta P, Kreeger L, Wylie DC, Pattadkal JJ, Lusignan T, Davis MJ, Turi GF, Li W-K, Whitmire MP, Chen Y, et al. (2019). Functional access to neuron subclasses in rodent and primate forebrain. *Cell Rep.* 26, 2818–2832.e8. [PubMed: 30840900]
- Miocinovic S, Somayajula S, Chitnis S, and Vitek JL (2013). History, applications, and mechanisms of deep brain stimulation. *JAMA Neurol.* 70, 163–171. [PubMed: 23407652]
- Miranda H, Gilja V, Chestek CA, Shenoy KV, and Meng TH (2010). HermesD: A high-rate long-range wireless transmission system for simultaneous multichannel neural recording applications. *IEEE Trans. Biomed. Circuits Syst* 4, 181–191. [PubMed: 23853342]
- Mitchell JF, Sundberg KA, and Reynolds JH (2007). Differential attention-dependent response modulation across cell classes in macaque visual area V4. *Neuron* 55, 131–141. [PubMed: 17610822]
- Movshon JA, and Newsome WT (1996). Visual response properties of striate cortical neurons projecting to area MT in macaque monkeys. *J. Neurosci* 16, 7733–7741. [PubMed: 8922429]
- O’Shea DJ, Trautmann E, Chandrasekaran C, Stavisky S, Kao JC, Sahani M, Ryu S, Deisseroth K, and Shenoy KV (2017). The need for calcium imaging in nonhuman primates: New motor neuroscience and brain-machine interfaces. *Exp. Neurol* 287, 437–451. [PubMed: 27511294]
- Phillips KA, Bales KL, Capitanio JP, Conley A, Czoty PW, ‘t Hart BA, Hopkins WD, Hu SL, Miller LA, Nader MA, et al. (2014). Why primate models matter. *Am. J. Primatol* 76, 801–827. [PubMed: 24723482]
- Resendez SL, Jennings JH, Ung RL, Namboodiri VMK, Zhou ZC, Otis JM, Nomura H, McHenry JA, Kosyk O, and Stuber GD (2016). Visualization of cortical, subcortical and deep brain neural circuit dynamics during naturalistic mammalian behavior with head-mounted microscopes and chronically implanted lenses. *Nat. Protoc* 11, 566–597. [PubMed: 26914316]
- Riehle A, and Requin J (1989). Monkey primary motor and premotor cortex: Single-cell activity related to prior information about direction and extent of an intended movement. *J. Neurophysiol* 61, 534–549. [PubMed: 2709098]

- Roelfsema PR, and Treue S (2014). Basic neuroscience research with nonhuman primates: A small but indispensable component of biomedical research. *Neuron* 82, 1200–1204. [PubMed: 24945764]
- Sadakane O, Masamizu Y, Watakabe A, Terada S, Ohtsuka M, Takaji M, Mizukami H, Ozawa K, Kawasaki H, Matsuzaki M, and Yamamori T (2015a). Long-term two-photon calcium imaging of neuronal populations with subcellular resolution in adult non-human primates. *Cell Rep.* 13, 1989–1999. [PubMed: 26655910]
- Sadakane O, Watakabe A, Ohtsuka M, Takaji M, Sasaki T, Kasai M, Isa T, Kato G, Nabekura J, Mizukami H, et al. (2015b). In vivo two-photon imaging of dendritic spines in marmoset neocortex. *eNeuro* 2, ENEURO.0019–15.2015.
- Santisakultarm TP, Kersbergen CJ, Bandy DK, Ide DC, Choi S-H, and Silva AC (2016). Two-photon imaging of cerebral hemodynamics and neural activity in awake and anesthetized marmosets. *J. Neurosci. Methods* 271, 55–64. [PubMed: 27393311]
- Sato K, and Sasaki E (2018). Genetic engineering in nonhuman primates for human disease modeling. *J. Hum. Genet* 63, 125–131. [PubMed: 29203824]
- Seidemann E, Chen Y, Bai Y, Chen SC, Mehta P, Kajs BL, Geisler WS, and Zemel BV (2016). Calcium imaging with genetically encoded indicators in behaving primates. *eLife* 5, e16178. [PubMed: 27441501]
- Sheintuch L, Rubin A, Brande-Eilat N, Geva N, Sadeh N, Pinchasof O, and Ziv Y (2017). Tracking the same neurons across multiple days in Ca²⁺ imaging data. *Cell Rep.* 21, 1102–1115. [PubMed: 29069591]
- Stamatakis AM, Schachter MJ, Gulati S, Zitelli KT, Malanowski S, Tajik A, Fritz C, Trulson M, and Otte SL (2018). Simultaneous optogenetics and cellular resolution calcium imaging during active behavior using a miniaturized microscope. *Front. Neurosci* 12, 496. [PubMed: 30087590]
- Stauffer WR, Lak A, Yang A, Borel M, Paulsen O, Boyden ES, and Schultz W (2016). Dopamine neuron-specific optogenetic stimulation in rhesus macaques. *Cell* 166, 1564–1571.e6. [PubMed: 27610576]
- Steinmetz NA, Buetfering C, Lecoq J, Lee CR, Peters AJ, Jacobs EAK, Coen P, Ollerenshaw DR, Valley MT, de Vries SEJ, et al. (2017). Aberrant cortical activity in multiple GCaMP6-expressing transgenic mouse lines. *eNeuro* 4, ENEURO.0207–17.2017.
- Terada S-I, Kobayashi K, Ohkura M, Nakai J, and Matsuzaki M (2018). Super-wide-field two-photon imaging with a micro-optical device moving in post-objective space. *Nat. Commun* 9, 3550. [PubMed: 30177699]
- Tervo DGR, Hwang B-Y, Viswanathan S, Gaj T, Lavzin M, Ritola KD, Lindo S, Michael S, Kuleshova E, Ojala D, et al. (2016). A designer AAV variant permits efficient retrograde access to projection neurons. *Neuron* 92, 372–382. [PubMed: 27720486]
- Thévenaz P, Ruttimann UE, and Unser M (1998). A pyramid approach to subpixel registration based on intensity. *IEEE Trans. Image Process* 7, 27–41. [PubMed: 18267377]
- Trainito C, von Nicolai C, Miller EK, and Siegel M (2019). Extracellular spike waveform dissociates four functionally distinct cell classes in primate cortex. *Curr. Biol* 29, 2973–2982.e5. [PubMed: 31447374]
- Trautmann EM, O’Shea DJ, Sun X, Marshel JH, Crow A, Hsueh B, Vesuna S, Cofer L, Bohner G, Allen W, et al. (2021). Dendritic calcium signals in rhesus macaque motor cortex drive an optical brain-computer interface. *Nat. Commun* 10.1038/s41467-021-23884-5.
- Trautmann EM, Stavisky SD, Lahiri S, Ames KC, Kaufman MT, O’Shea DJ, Vyas S, Sun X, Ryu SI, Ganguli S, and Shenoy KV (2019). Accurate estimation of neural population dynamics without spike sorting. *Neuron* 103, 292–308.e4. [PubMed: 31171448]
- Villette V, Chavarha M, Dimov IK, Bradley J, Pradhan L, Mathieu B, Evans SW, Chamberland S, Shi D, Yang R, et al. (2019). Ultrafast two-photon imaging of a high-gain voltage indicator in awake behaving mice. *Cell* 179, 1590–1608.e23. [PubMed: 31835034]
- Wei Z, Lin B-J, Chen T-W, Daie K, Svoboda K, and Druckmann S (2020). A comparison of neuronal population dynamics measured with calcium imaging and electrophysiology. *PLoS Comput. Biol* 16, e1008198. [PubMed: 32931495]

- Weiss AR, Liguore WA, Domire JS, Button D, and McBride JL (2020). Intra-striatal AAV2.retro administration leads to extensive retrograde transport in the rhesus macaque brain: Implications for disease modeling and therapeutic development. *Biorxiv*, 2020.01.17.910893.
- Yamada Y, Matsumoto Y, Okahara N, and Mikoshiba K (2016). Chronic multiscale imaging of neuronal activity in the awake common marmoset. *Sci. Rep* 6, 35722. [PubMed: 27786241]
- Yang W, and Yuste R (2017). In vivo imaging of neural activity. *Nat. Methods* 14, 349–359. [PubMed: 28362436]
- Yang M, Zhou Z, Zhang J, Jia S, Li T, Guan J, Liao X, Leng B, Lyu J, Zhang K, et al. (2019). Matriex imaging: Multiarea two-photon real-time in vivo explorer. *Light Sci. Appl* 8, 109. [PubMed: 31798848]
- Zeng H-H, Huang J-F, Chen M, Wen Y-Q, Shen Z-M, and Poo M-M (2019). Local homogeneity of tonotopic organization in the primary auditory cortex of marmosets. *Proc. Natl. Acad. Sci. USA* 116, 3239–3244. [PubMed: 30718428]
- Zhou P, Resendez SL, Rodriguez-Romaguera J, Jimenez JC, Neufeld SQ, Giovannucci A, Friedrich J, Pnevmatikakis EA, Stuber GD, Hen R, et al. (2018). Efficient and accurate extraction of in vivo calcium signals from microendoscopic video data. *eLife* 7, e28728. [PubMed: 29469809]
- Ziv Y, and Ghosh KK (2015). Miniature microscopes for large-scale imaging of neuronal activity in freely behaving rodents. *Curr. Opin. Neurobiol* 32, 141–147. [PubMed: 25951292]
- Ziv Y, Burns LD, Cocker ED, Hamel EO, Ghosh KK, Kitch LJ, El Gamal A, and Schnitzer MJ (2013). Long-term dynamics of CA1 hippocampal place codes. *Nat. Neurosci* 16, 264–266. [PubMed: 23396101]

Highlights

- Demonstration of head-mounted microendoscopic calcium imaging in behaving macaques
- Surgical protocols developed for preparing the animal for calcium imaging
- Proof-of-concept plug-and-play calcium imaging with stable recording capability
- Imaging in the dorsal premotor cortex exhibited dynamics selective to direction of reach

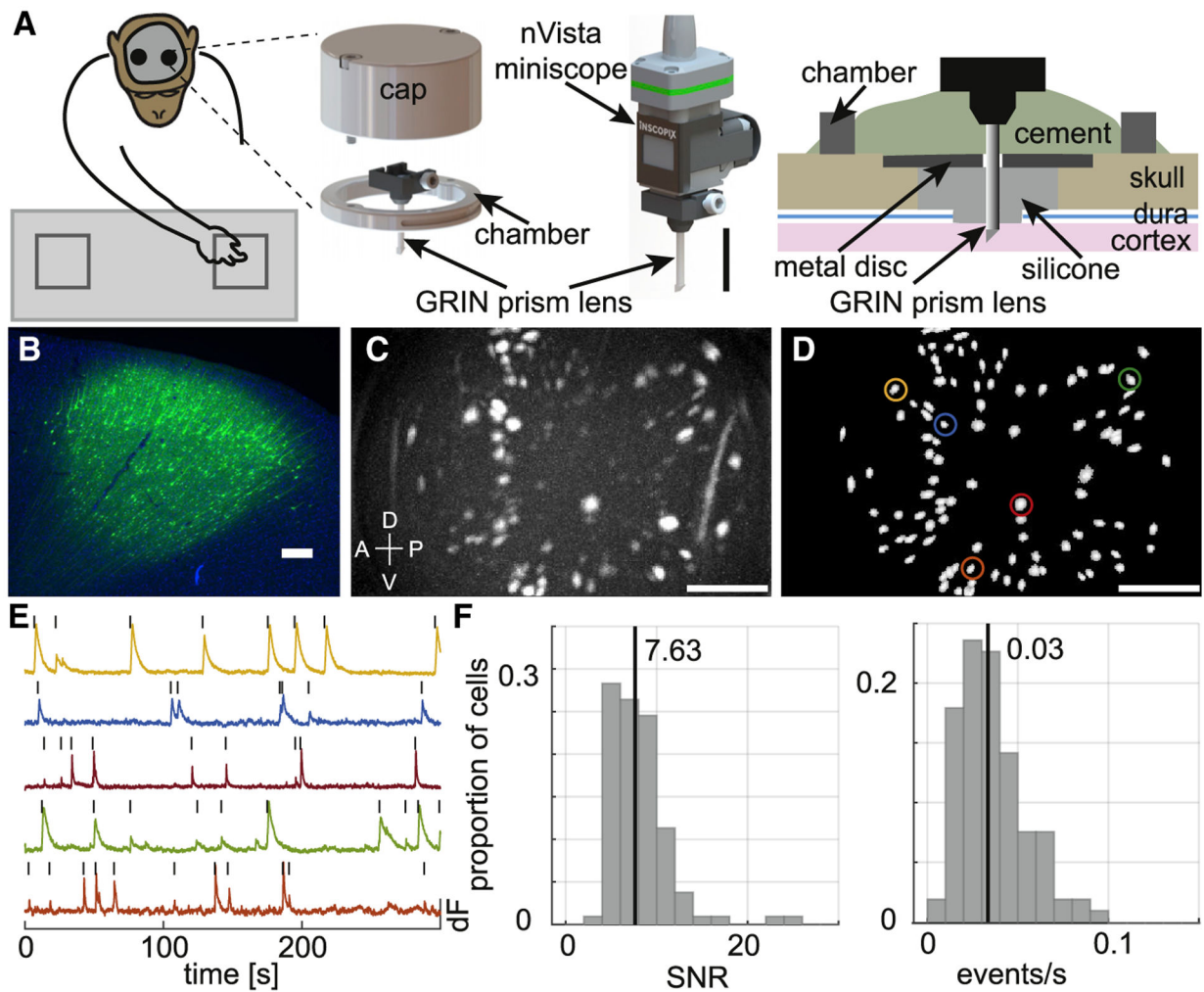


Figure 1. Cellular resolution imaging in macaque dorsal premotor cortex (PMd)

(A) Left: Schematic of the macaque performing the reach to reward task with two nVista miniscopes mounted on the head to image from the bilateral PMd. Middle: Zoomed-in schematic of the implant hardware, including the GRIN prism lens integrated with the miniscope baseplate and the cranial chamber and cap, and the nVista miniscope docked on the baseplate for imaging. Scale bar, 10 mm. Right: Schematic depicting how the chamber and lens probe were positioned and secured with respect to the cortex and skull.

(B) Post-mortem native GCaMP expression (green) and DAPI-stained cell nuclei (blue) in the cortex 8 weeks following injections of the AAV Tet-Off virus system in a separate animal (animal 1). Scale bar, 250 μ m.

(C) Maximum projection image of *in vivo* GCaMP fluorescence over the course of a single example session. The bright-colored regions in the image indicate cells that exhibited active calcium dynamics during the recording. Scale bar, 250 μ m. Dorsal (D), ventral (V), anterior (A), and posterior (P) denote orientation in the premotor cortex.

(D) Map of cells extracted using CNMFe from the same example session. Colored circles indicate example cell calcium activity traces in (E). Scale bar, 250 μ m.

(E) Calcium activity (dF, peak normalized) traces of example cells highlighted in (D). The black tick marks above the traces indicate detected calcium events.

(F) Distribution of median calcium event SNR (left) and median calcium event rate (right) for the entire population of cells recorded in the example session. The vertical lines indicate the median SNR (7.63) and event rate (0.03) values.

See also Figures S1–S3 and Videos S1, S2, S3, and S4.

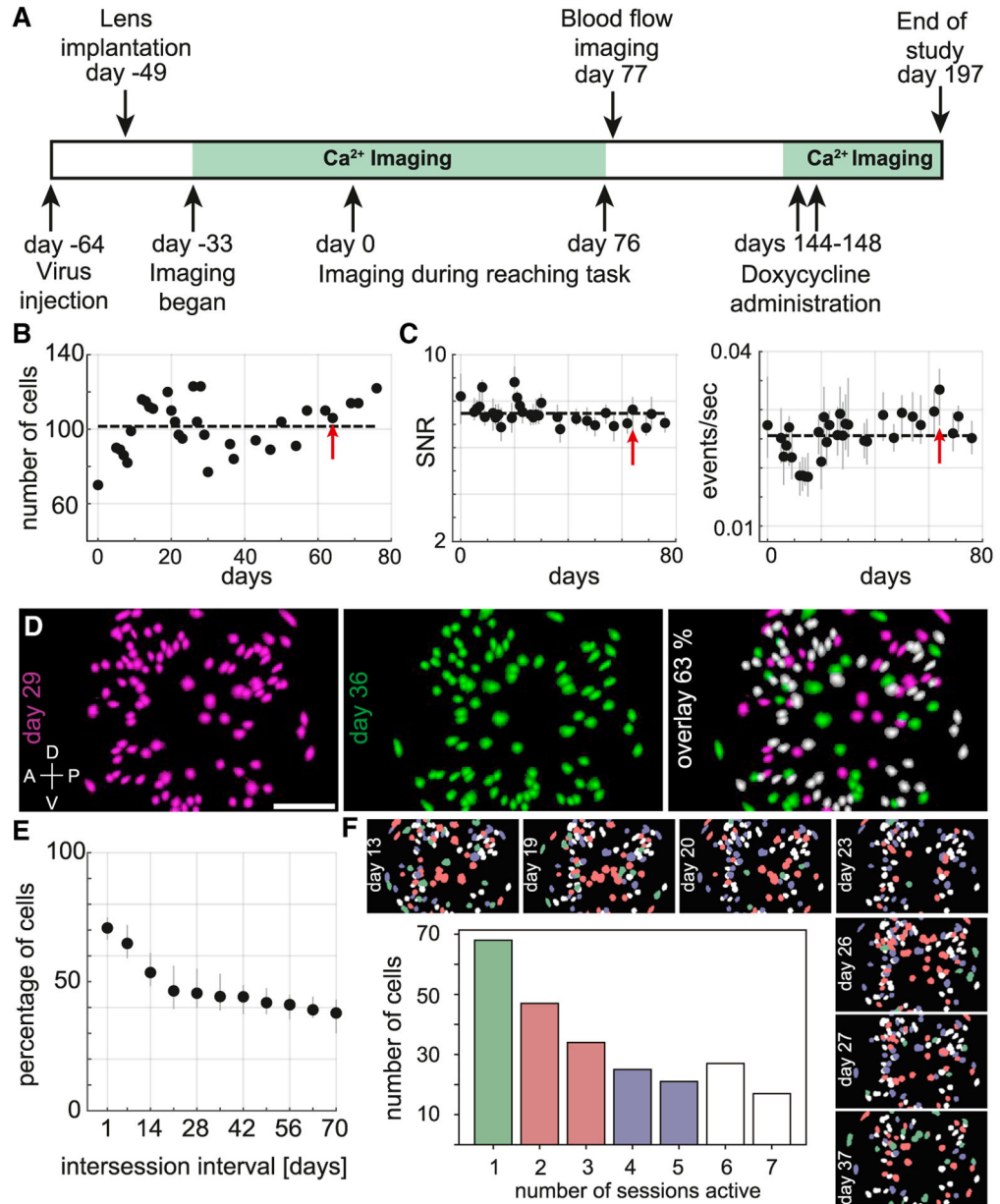


Figure 2. Calcium imaging stability and longitudinal tracking of neurons

(A) Schematic of the experimental timeline.

(B) Number of cells that were imaged for each session across approximately 2.5 months (days 0–76 on experimental timeline in A). The dashed line indicates the mean value. The red arrow indicates the example session in Figure 1.

(C) Calcium event SNR (left) and rates (right) (median and IQR) for each session across 76 days. The dashed line indicates the mean value. The red arrow indicates the example session.

(D) Left: CNMFe-extracted cell map from an imaging session conducted on day 29 (magenta). Middle: Cell map from day 36 (green). Right: Overlay of cell maps from the two sessions spaced 7 days apart. 63% of the cells from day 29, colored in white, were present

and active on both days. Dorsal (D), ventral (V), anterior (A), and posterior (P) denote orientation in the premotor cortex. Scale bar, 250 μm .

(E) Percentage of cells (median, IQR) in common between two sessions as a function of the inter-session interval (days).

(F) Longitudinal tracking of cells through multiple sessions. Top and right side: Cell maps from seven different sessions spanning approximately 3 weeks with individual cells color-coded according to the number of sessions in which they were present and active (colors as indicated in bar plot). Center: Number of cells as a function of the number of sessions (non-consecutive) found to be present and active.

See also Figures S3–S5.

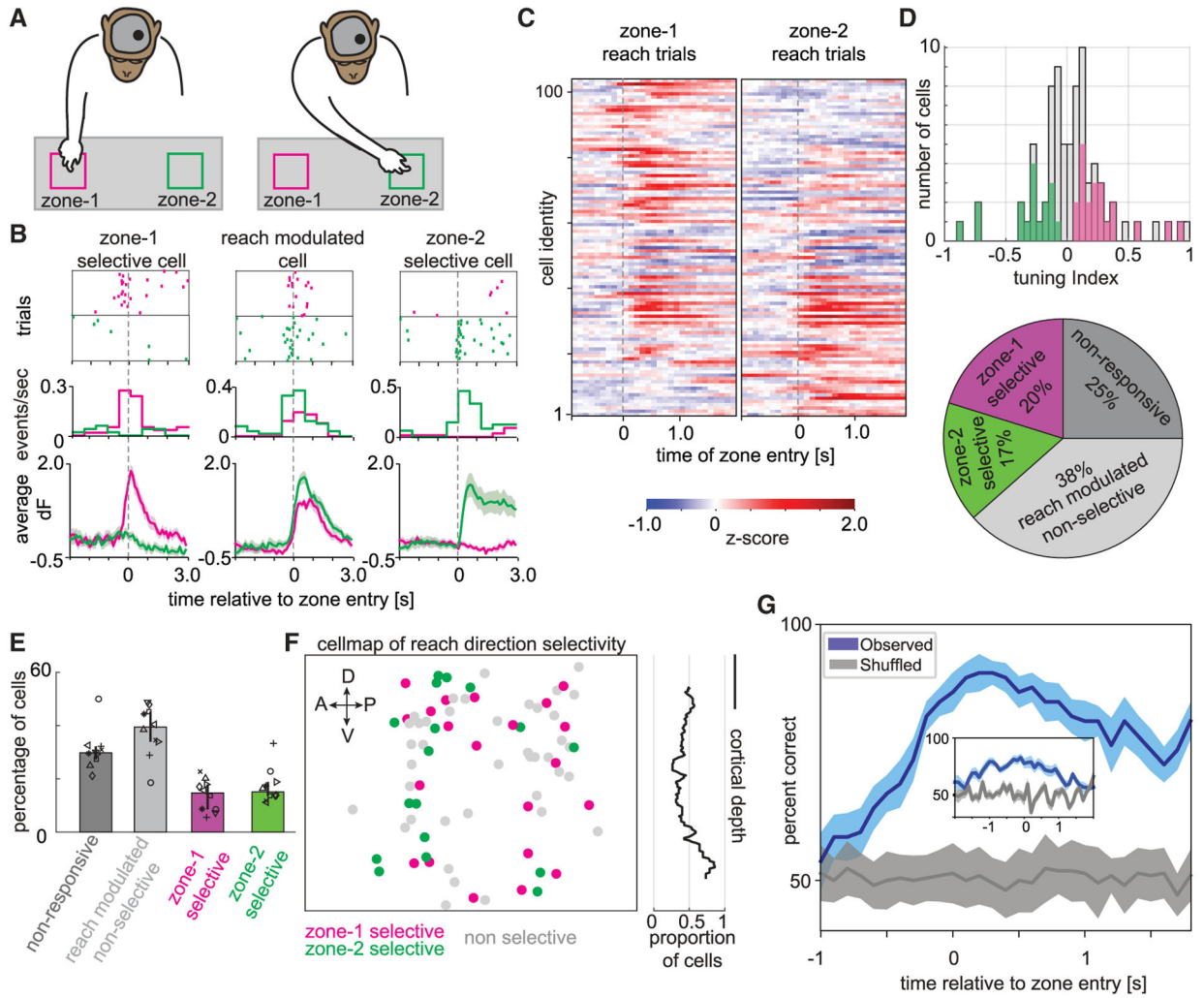


Figure 3. Direction selective calcium dynamics and decoding of motor reach behavior

(A) Schematic of the macaque performing the reach to reward task with an nVista miniscope mounted on the head to image from the left hemisphere PMd. In these sessions, the macaque reached with the right arm (contralateral to the imaged hemisphere) to one of two zones, either zone 1 (magenta) or zone 2 (green).

(B) Three example cells from the left hemisphere PMd exhibiting zone 1 selectivity (left), zone 2 selectivity (right), or nonselective modulation to either reach location (middle) in a single example session. Top: Raster plots of calcium event times across multiple trials aligned to the time of reach entry (dashed vertical line) into zone 1 (magenta) or zone 2 (green). Middle: Peri-stimulus time histogram (PSTH) of calcium events as a function of time relative to reach entry into zone 1 (magenta) or zone 2 (green). Bottom: Calcium trace activity (mean, SEM) as a function of reach entry into zone 1 (magenta) or zone 2 (green).

(C) Heatmap depicting Z-scored trial-averaged calcium trace activity for each cell in the population (rows) on either zone 1 (left) or zone 2 (right) reach trials and aligned to the time of zone entry (dashed vertical line). The cells have been sorted based on their selectivity. Tuning index +1 (top) to -1 (bottom).

(D) Top: Distribution of reach direction selectivity (tuning index) for the entire population of cells recorded in the example session. Magenta- and green-colored bars indicate cells that had significant ($p < 0.05$; see STAR Methods) reach direction selectivity to zone 1 (positive tuning indices) or zone 2 (negative tuning indices), respectively. Bottom: Pie chart depicting the percentage of cells in the example session that were classified as zone 1 selective (magenta), zone 2 selective (green), reach-modulated but nonselective (light gray), or nonresponsive (dark gray).

(E) Bar plot depicting the median number of cells across sessions that are non-responsive (dark gray), task-modulated but not reach direction selective (light gray), selective to zone 1 (magenta), and selective to zone 2 (green). Error bars are IQR.

(F) Left: Cell map depicting the spatial distribution of reach direction selectivity. Cells selective for zone 1 (magenta), zone 2 (green), or reach-modulated but nonselective (light gray) are indicated. Dorsal (D), ventral (V), anterior (A), and posterior (P) orientations in the left hemisphere PMd are indicated with arrows. Right: Proportion of reach-modulated cells that were significantly selective to either reach direction as a function of cortical depth. Scale bar, 200 μm .

(G) Observed accuracy of decoding the animal's reach direction on individual trials (mean, SEM) utilizing a model trained with calcium trace activity in 400-ms time bins (and 100-ms steps) around the time of reach entry into zones 1 and 2 (blue). Chance level decoding accuracy estimated by shuffling the reach direction across trials (gray). Inset: Decoding accuracy utilizing a model trained with calcium events instead of calcium traces.

See also Figures S6 and S7 and Video S5.

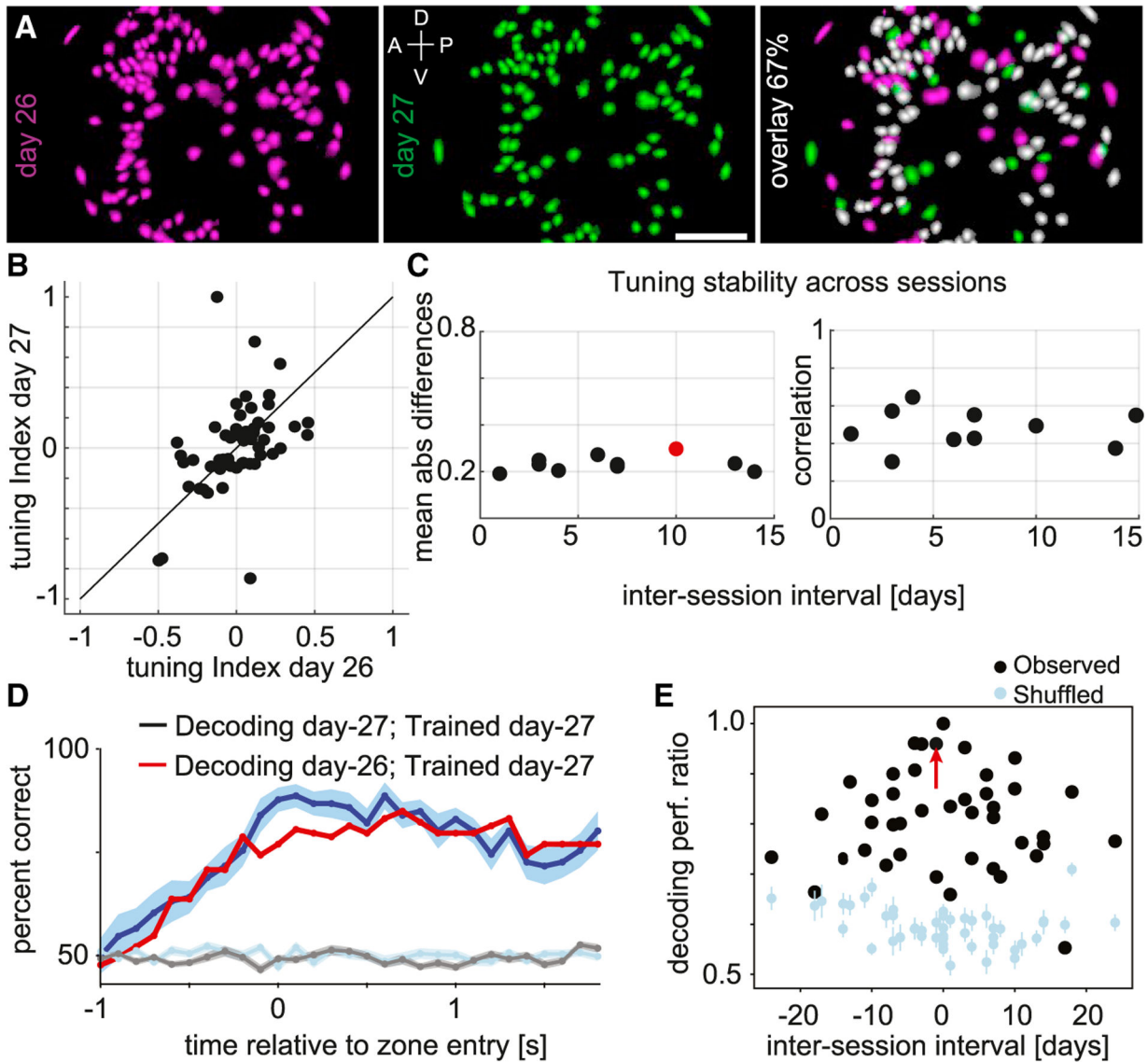


Figure 4. Longitudinally tracking the relationship between neurons and motor reach behavior
 (A) Left: CNMFe-extracted cell map from an imaging session conducted on day 26 (magenta). Middle: Cell map from day 27 (green). Right: Overlay of cell maps from the two sessions spaced 1 day apart. 67% of the cells from day 26, shown in white, were present and active on both days. Scale bar, 250 μ m. Dorsal (D), ventral (V), anterior (A), and posterior (P) denote orientation in the premotor cortex.
 (B) Reach direction selectivity (tuning index) on day 26 versus day 27 for cells exhibiting significant ($p < 0.05$; see STAR Methods) reach direction selectivity to zone 1 (positive tuning indices) or zone 2 (negative tuning indices) and imaged longitudinally across both sessions.
 (C) Stability of reach direction selectivity across pairs of sessions. Left: Mean absolute differences in tuning index for cells imaged longitudinally across pairs of sessions as a function of the inter-session interval (days). Sessions exhibiting significant differences are indicated (red; Wilcoxon signed-rank test, $p < 0.05$). Right: Correlation between tuning

indices for cells imaged longitudinally across pairs of sessions as a function of the inter-session interval (days). All correlations were found to be significant ($p < 0.05$).

(D) Observed accuracy of decoding the animal's reach direction on individual trials (mean, SEM) utilizing a model trained and tested on the same session (blue; day 27) or trained and tested on sessions 1 day apart (red; days 26 and 27). Chance level (across session) decoding accuracy estimated by shuffling the reach direction across trials (cyan) or by shuffling cell identity labels (gray).

(E) Peak observed (black) and shuffled (cyan) decoding accuracy (mean, SEM) as a function of the inter-session interval (days). All values are expressed as a ratio normalized by the peak observed decoding accuracy for within-session training and testing. The red arrow points to the session pair in (D).

See Table S1 for decoding performance values for all session pairs.

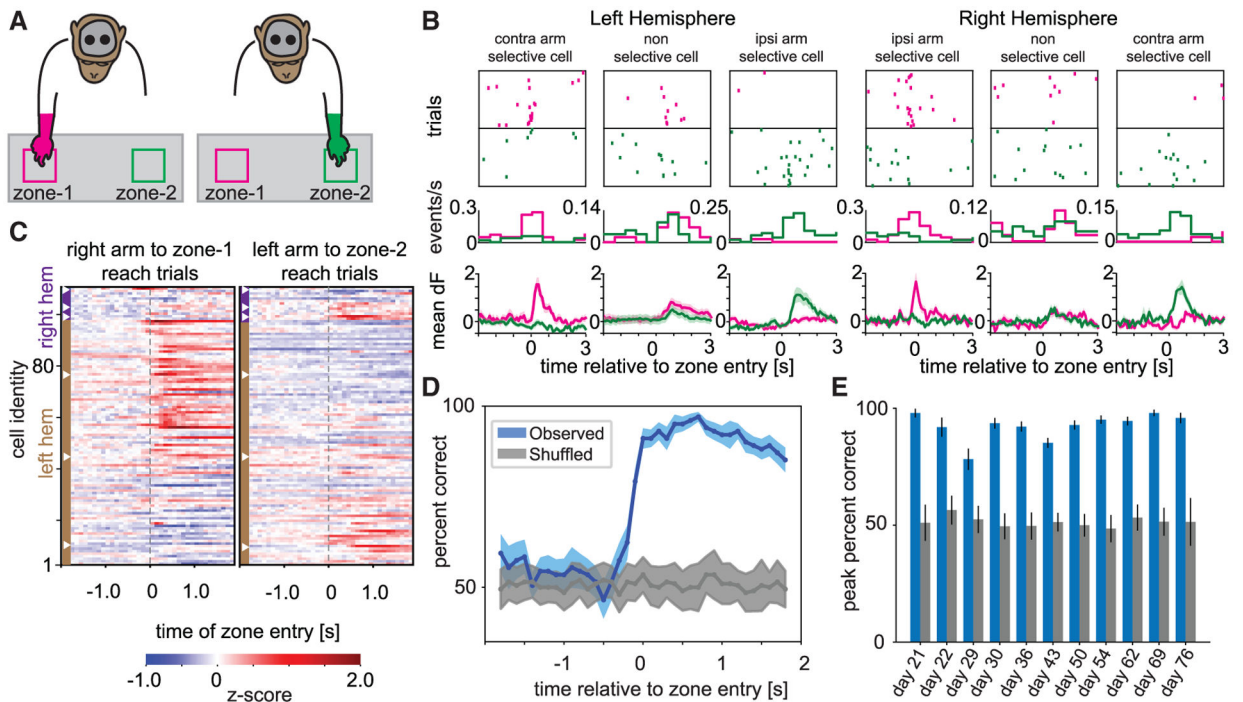


Figure 5. Multisite calcium imaging in bilateral dorsal premotor cortices with multiple head-mounted miniscopes

(A) Schematic of the macaque performing the reach to reward task with two nVista miniscopes mounted on the head to image bilaterally from left and right hemisphere PMDs. In these sessions, the macaque reached with either the right arm to zone 1 (magenta) or the left arm to zone 2 (green).

(B) Three example cells each from the left and right hemisphere PMDs exhibiting right arm reach selectivity (left), left arm reach selectivity (right), or nonselective modulation to either arm reach (middle) in a single example session. Top: Raster plots of calcium event times across multiple trials aligned to the time of reach entry (dashed vertical line) using right arm into zone 1 (magenta) or left arm into zone 2 (green). Middle: PSTH of calcium events as a function of time relative to reach entry using right arm into zone 1 (magenta) or left arm into zone 2 (green). Bottom: Calcium trace activity (mean, SEM) as a function of reach entry using right arm into zone 1 (magenta) or left arm into zone 2 (green).

(C) Heatmap depicting Z-scored trial-averaged calcium trace activity for each cell in the population (rows) on either right arm, zone 1 (left) or left arm, zone 2 (right) reach trials and aligned to the time of zone entry (dashed vertical line). The cells have first been grouped based on the hemisphere in which they reside (right hemisphere toward top [purple margin shading], left hemisphere toward bottom [brown margin shading]) and then within that group they have been sorted top to bottom based on their selectivity (tuning index) to right arm, zone 1 or left arm, zone 2 reaches, respectively. The white arrowheads indicate the cells shown in (B).

(D) Observed accuracy of decoding the animal's reach arm on individual trials (mean, SEM) utilizing a model trained with calcium trace activity from bilateral PMd in 400-ms time bins (and 100-ms steps) around the time of right and left arm reach entry into zones 1 and 2,

respectively (blue). Chance level decoding accuracy estimated by shuffling the reach arm across trials (gray).

(E) Peak observed (blue) and shuffled (gray) decoding accuracy (mean, SEM) across sessions utilizing a model trained with calcium trace activity from bilateral PMd.

See also Video S6.

Author Manuscript

Author Manuscript

Author Manuscript

Author Manuscript

KEY RESOURCES TABLE

REAGENT or RESOURCE	SOURCE	IDENTIFIER
Bacterial and virus strains		
AAV1.CaMK2a.GCaMP6f.WPRE.SV40	Penn Vector Core	N/A
AAV5.mThy1PSs.tTAad	Salk Vector Core	N/A
AAV5.TRE3.GCaMP6f	Salk Vector Core	N/A
Chemicals, peptides, and recombinant proteins		
Fluorescein	Akorn Inc., IL	AK-Fluor 10%
DAPI	SouthernBiotech	0100–20
Experimental models: Organisms/strains		
Rhesus macaques	CNPRC, UC Davis	N/A
Other		
Artificial Dura	Gore, DE	Preclude PDX
ProView Integrated Prism Lens	Inscopix, Inc.	1050–004612
nVista miniscope	Inscopix, Inc.	nVista 3.0
Software and algorithms		
Inscopix Data Processing Software	Inscopix, Inc.	IDPS 1.2.1
Plexon online acquisition and Cineplex	Plexon, Inc.	v3.8.1
Editor and studio software		
MATLAB	MathWorks	MATLAB 2017
ImageJ	NIH, USA	ImageJ 1.51 s