

UC Riverside

UC Riverside Previously Published Works

Title

Structure and computational analysis of a novel protein with metallopeptidase-like and circularly permuted winged-helix-turn-helix domains reveals a possible role in modified polysaccharide biosynthesis

Permalink

<https://escholarship.org/uc/item/4107q93s>

Journal

BMC Bioinformatics, 15(1)

ISSN

1471-2105

Authors

Das, Debanu

Murzin, Alexey G

Rawlings, Neil D

et al.

Publication Date

2014-12-01

DOI

10.1186/1471-2105-15-75

Copyright Information

This work is made available under the terms of a Creative Commons Attribution License, available at <https://creativecommons.org/licenses/by/4.0/>

Peer reviewed

RESEARCH ARTICLE

Open Access

Structure and computational analysis of a novel protein with metallopeptidase-like and circularly permuted winged-helix-turn-helix domains reveals a possible role in modified polysaccharide biosynthesis

Debanu Das^{1,2*}, Alexey G Murzin³, Neil D Rawlings^{4,5}, Robert D Finn⁶, Penelope Coggill^{4,5}, Alex Bateman⁵, Adam Godzik^{1,7} and L Aravind^{8*}

Abstract

Background: CA_C2195 from *Clostridium acetobutylicum* is a protein of unknown function. Sequence analysis predicted that part of the protein contained a metallopeptidase-related domain. There are over 200 homologs of similar size in large sequence databases such as UniProt, with pairwise sequence identities in the range of ~40-60%. CA_C2195 was chosen for crystal structure determination for structure-based function annotation of novel protein sequence space.

Results: The structure confirmed that CA_C2195 contained an N-terminal metallopeptidase-like domain. The structure revealed two extra domains: an $\alpha\beta$ domain inserted in the metallopeptidase-like domain and a C-terminal circularly permuted winged-helix-turn-helix domain.

Conclusions: Based on our sequence and structural analyses using the crystal structure of CA_C2195 we provide a view into the possible functions of the protein. From contextual information from gene-neighborhood analysis, we propose that rather than being a peptidase, CA_C2195 and its homologs might play a role in biosynthesis of a modified cell-surface carbohydrate in conjunction with several sugar-modification enzymes. These results provide the groundwork for the experimental verification of the function.

Keywords: CA_C2195, Peptidase, DUF4910, DUF2172, HTH_47, Structural genomics

Background

CA_C2195 from *Clostridium acetobutylicum* [UniProtKB: Q97H19_CLOAB] is a novel 434-residue protein of unknown function. Initial sequence analysis suggested that this protein could be a metallopeptidase. A PSI-BLAST [1] search against UniProt revealed that there are over 200 other similar proteins of unknown function. Pairwise sequence identities of these proteins to CA_C2195 vary between 40-60%. We present here the crystal structure of

CA_C2195, determined as part of the Protein Structure Initiative program to extend structural coverage of novel protein sequence space to provide structure-based function assignment [2,3]. CA_C2195 was specifically targeted by the Joint Center for Structural Genomics (JCSG) in an effort to increase the structural coverage of proteins in Pfam [4] clan CL0035 of metallopeptidases (Peptidase MH/MC/MF), which has ~64000 protein sequences (including CA_C2195) in 12 families (Pfam v27.0, March 2013) but with only limited (~0.2%), biased structural coverage. The families that form this clan contain many sequences, are functionally diverse, and are important in numerous biological processes. For example, recombinant bacterial carboxypeptidase G2 is used in cancer therapy to

* Correspondence: debanu@slac.stanford.edu; aravind@ncbi.nlm.nih.gov

¹Joint Center for Structural Genomics, La Jolla, CA, USA

⁸National Center for Biotechnology Information, National Library of Medicine, Building 38A, Bethesda, MD, USA

Full list of author information is available at the end of the article

hydrolyze methotrexate [5] and is being tested in prodrug therapy; and human aspartoacylase is implicated in Canavan's disease in the brain [6]. There are also non-peptidase homologs of these proteins: some of these have active catalytic domains, but perform distinct albeit related enzymatic functions, such as the glutaminyl-peptide cyclotransferase. In other cases the homologous domains are not catalytically active and they perform protein-protein interaction based functions, such as the transferrin receptor proteins 1 and 2. JCSG has determined ~20 structures to date from clan CL0035 (see http://www.topsan.org/Groups/Zinc_Peptidase). Proteins in these families [7,8] have a broad phylogenetic spread across all kingdoms of life and show substantial sequence divergence.

The structure of CA_C2195 revealed that it is composed of three domains. Our sequence and structure analysis led to the assignment of these three domains of CA_C2195 and its homologs to new Pfam families (using standard Pfam protocols) [4], to be released in the next Pfam update, version 28.0: the N-terminal metallopeptidase-like domain to DUF4910 (Domain of Unknown Function, [Pfam:PF16254]), which is distantly related by sequence to the Peptidase_M28 family [Pfam:PF04389] in clan CL0035 (MEROPS [9] M28 family in the peptidase MH clan); the insert domain to DUF2172 [Pfam:PF09940] (a reassignment of the existing entry); and the C-terminal wHTH to HTH_47 [Pfam:PF16221]. We believe that our results may aid in the design of structure-based biochemical experiments to further explore the biology of these proteins similar to other recent efforts on proteins of unknown function [10-15]. Based on a recent study, many DUF proteins are likely essential proteins [16].

Results and discussion

Overall structure

The protein production and crystallization of CA_C2195 was performed by standard protocols in the JCSG High-Throughput Structural Biology pipeline (www.jcsg.org) as briefly described in Methods. The crystal structure was determined to 2.37 Å by Multi-wavelength Anomalous Diffraction (MAD) phasing and atomic coordinates and experimental structure factors have been deposited in the Protein Data Bank (www.wwpdb.org) with PDB accession code 3k9t. Data collection, model and refinement statistics are summarized in Table 1 [17-20]. There is one molecule of CA_C2195 in the crystallographic asymmetric unit (Figure 1), which contains 422 of the 434 residues in the entire protein as well as Gly0 that remains after cleavage of the protein expression and purification tag. Residues 374-386 were disordered in the structure and were excluded from the protein model. A zinc ion (Zn) was modeled at the putative peptidase active site based on presence in the crystallization condition as well as an

anomalous difference Fourier map. An imidazole molecule (Imd) from the crystallization condition was also modeled based on electron density to coordinate with the Zn. Other solvent molecules include two chloride ions and four (4R)-2-methylpentane-2,4-diol (MRD) molecules from the crystallization condition as well as water molecules. Sequencing of the cloned construct indicated that residue Pro309 was substituted with a serine residue, which was supported by electron density. Based on crystal packing analysis, using the 'Protein interfaces, surfaces and assemblies' service PISA (www.ebi.ac.uk/pdbe/prot_int/pistart.html) [21] at the European Bioinformatics Institute (EBI), the predicted biological assembly of CA_C2195 is a trimer. Size-exclusion chromatography coupled with static light scattering, performed during protein production and crystallization screening, also supports a protein trimer in solution. A search for other proteins that may share overall structural similarity to CA_C2195, using the Protein structure comparison service Fold at EBI (www.ebi.ac.uk/msd-srv/ssm) [22] produced no significant hits. Examination of the structure revealed three distinct domains: a Peptidase_M28-like metallopeptidase domain with a small $\alpha + \beta$ domain inserted into it and a C-terminal wHTH domain [23,24].

N-terminal metallopeptidase-like domain (DUF4910)

Out of the 434 residues in CA_C2195, approximately residues 1-55 and 165-355 form the metallopeptidase-like domain, forming the portion that is related to the Peptidase_M28 family [Pfam:PF04389]. A search for other structurally related proteins using Fold produces significant hits to several aminopeptidases (SSM Q-score ~0.4, root-mean-square deviation (r.m.s.d.) ~2.3 Å between C α atoms over the entire domain) with PDB codes [PDB:2dea] (Figure 2), [PDB:1rtq], [PDB:2iq6] and [PDB:3b3t], all structures from the Peptidase_M28 family. However, despite the degree of structural conservation, the level of sequence identity is very low (~17%). The putative active site includes a Zn coordinated with residues Asp195, His189, His324 and the N3 atom from the Imd. It is possible that Imd mimics a portion of the physiological ligand. To identify conserved residues and any potential clustering of such residues, we aligned 82 homologs (ranging from 35-60% sequence identity) and used the conservation profile to mark-up the structure corresponding to DUF4910 (Figure 3). This sequence conservation analysis identified a cluster of conserved residues located within a cleft of the structure, which include Asp195, His189 and His324 that coordinate to the Zn, and together form a putative active site.

All known Peptidase_M28 members bind two Zn ions, which are described as "co-catalytic" as both Zn ions participate in the catalytic activity. In contrast, CA_C2195

Table 1 Summary of crystal parameters, data collection and refinement statistics for PDB 3k9t

	λ_1 MAD-Se	λ_2 MAD-Se	λ_3 MAD-Se
Data collection			
Space group	H32		
Unit cell parameters (Å)	a = 153.78, b = 153.78, c = 168.38		
Wavelength (Å)	0.91837	0.97925	0.97911
Resolution range (Å)	29.1-2.37 (2.43-2.37)	29.1-2.44 (2.50-2.44)	29.1-2.25 (2.31-2.25)
No. of observations	172,585	157,212	403,378
No. of unique reflections	31,178	28,543	36,347
Completeness (%)	99.9 (100.0)	99.9 (100.0)	100.0 (100.0)
Mean I/σ (I)	9.0 (1.5)	9.2 (1.6)	12.7 (1.9)
R_{merge} on I^\dagger (%)	18.9 (101.7)	18.3 (93.1)	20.9 (132.1)
R_{meas} on I^\ddagger (%)	20.9 (112.3)	20.3 (102.9)	21.9 (138.4)
$R_{p.i.m.}$ on $I^{\ddagger\ddagger}$ (%)	8.8 (47.4)	8.6 (43.4)	6.5 (41.2)
Model and refinement statistics			
Resolution range (Å)	29.1-2.37		
No. of reflections (total)	31,177 [§]		
No. of reflections (test)	1576		
Completeness (%)	100.0		
Data set used in refinement	λ_1		
Cutoff criteria	F > 0		
R_{cryst} [¶]	0.171		
R_{free} [¶]	0.212		
Stereochemical parameters			
Restraints (RMSD observed)			
Bond angles (°)	1.61		
Bond lengths (Å)	0.015		
Average isotropic B value ^{††} (Å ²)	29.5		
ESU ^{†††} based on R_{free} (Å)	0.18		
Protein residues/ atoms	422 / 3386		
Waters / Zn/ Cl/ Imd/ MRD	221 / 1 / 2 / 1 / 4		

Values in parentheses are for the highest resolution shell.

[†] $R_{merge} = \sum_{hkl} \sum_i |I_i(hkl) - \langle I(hkl) \rangle| / \sum_{hkl} \sum_i I_i(hkl)$.

[‡] $R_{meas} = \sum_{hkl} [N/(N-1)]^{1/2} \sum_i |I_i(hkl) - \langle I(hkl) \rangle| / \sum_{hkl} \sum_i I_i(hkl)$ [17].

^{‡‡} $R_{p.i.m.}$ (precision-indicating R_{merge}) = $\sum_{hkl} [(1/(N-1))^{1/2} \sum_i |I_i(hkl) - \langle I(hkl) \rangle|] / \sum_{hkl} \sum_i I_i(hkl)$ [19,20].

[§] Typically, the number of unique reflections used in refinement is slightly less than the total number that were integrated and scaled. Reflections are excluded owing to systematic absences, negative intensities and rounding errors in the resolution limits and unit-cell parameters.

[¶] $R_{cryst} = \sum_{hkl} |F_{obs} - F_{calc}| / \sum_{hkl} F_{obs}$, where F_{calc} and F_{obs} are the calculated and observed structure-factor amplitudes, respectively. R_{free} is the same as R_{cryst} but for 5.1% of the total reflections chosen at random and omitted from refinement.

^{††} This value represents the total B that includes TLS and residual B components.

^{†††} Estimated overall coordinate error [18].

has one bound Zn ion. In an earlier study, it was found that HmrA [PDB:3ram] [25], a Peptidase_M20 [Pfam: PF01546] protein (M20 and M28 peptidases are both in the MH clan and closely related to each other), also contained only one Zn ion and that this might have been enough to change its specificity from that of an exopeptidase (aminopeptidase or carboxypeptidase, which are the predominant specificities in both M20 and M28) to that

of an endopeptidase. Despite only one Zn ion in HmrA (it is not fully clear whether the HmrA physiologically contains only one Zn ion or whether this was an artifact of the crystallization and that two Zn should be present), all five Zn-coordinating residues expected in Peptidase_M20 are conserved, which is not the case with CA_C2195. In CA_C2195 only the residues that bind the single Zn ion have been retained.

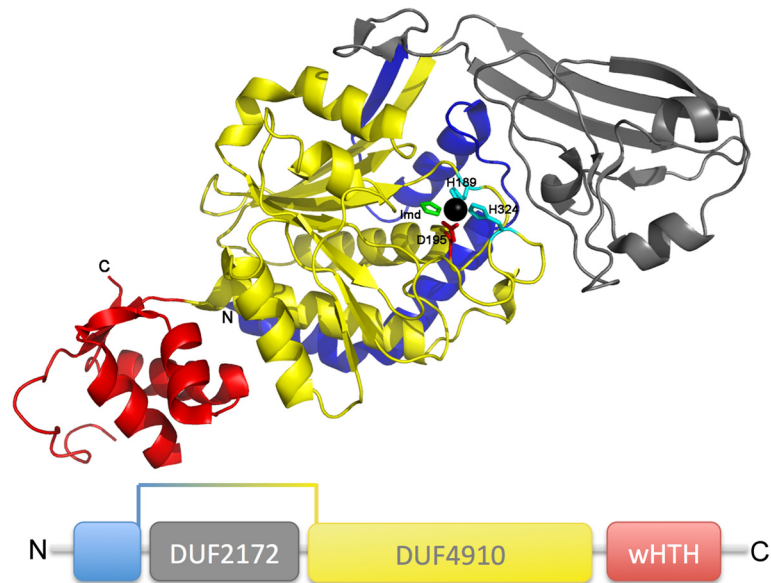


Figure 1 Crystal structure and domain architecture. The crystal structure of CA_C2195 from *Clostridium acetobutylicum*, with the N- and C-termini labeled as 'N' and 'C', reveals 3 domains: residues 1–55 (blue) and 165–355 (yellow) form the N-terminal metallopeptidase domain, DUF4910; residues 56–164 (grey) form the DUF2172 domain; and residues 356–434 (red) form a C-terminal wHTH domain, HTH_47. Residues in the putative active site are Asp195 (red stick); and His189 and His324 (cyan sticks), and they are bound to a Zn ion from the crystallization condition. Imidazole from the crystallization condition is also bound to the active site Zn. The lower panel is a linear representation of the domain architecture of CA_C2195.

CA_C2195 does not possess conventional Peptidase_M28 active site residues, as both of the essential, invariant, active site residues have been replaced: Ser191 replaces the conserved Asp and Pro225 replaces the conserved Glu. Ser191 is conserved as Ser in 73 of the 82 homologs that were

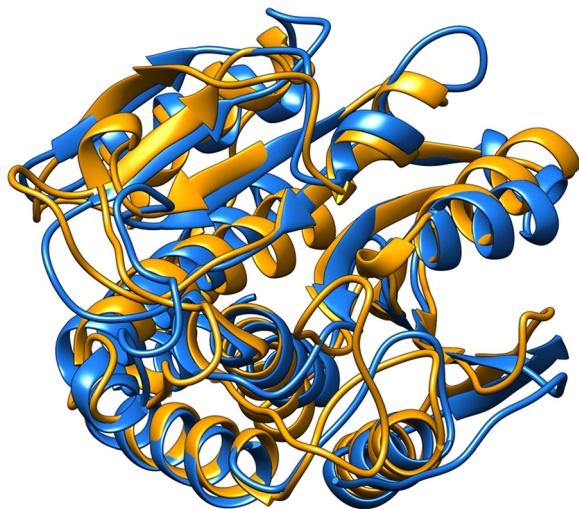


Figure 2 Metallopeptidase domain structure. The metallopeptidase domain of CA_C2195 (blue) is similar in structure to several other metallopeptidases, as for example, the Peptidase_M28 family aminopeptidase [PDB:2dea] (orange) with r.m. s.d. ~ 2.3 Å between C_{α} atoms over the entire domain despite a very low sequence identity of $\sim 17\%$.

aligned and present as either Ala or Gly in the remaining 9 homologs. Pro225 is conserved as Pro in 81 of the homologs and present as Val in 1 homolog. All enzymes in Peptidase_M28, the closest known peptidase family by structure and sequence, have these residues conserved. There are over 550 non-peptidase M28 homologs in MEROPS, but only a few have been characterized. Those that have been characterized have evolved different functions, for example, the transferrin receptor proteins 1 and 2, and glutaminyl-peptide cyclotransferase. The glutaminyl-peptide cyclotransferase also has all five Zn-binding and both active site Asp and Glu residues conserved [26], therefore, CA_C2195 is unlikely to have comparable catalytic activity. Transferrin in blood serum binds iron, which is internalized once transferrin docks to its receptor [27].

Insert domain (DUF2172)

Residues 56–164 (approximately) in CA_C2195 form a separate globular domain inserted into the DUF4910 domain. This insert domain adopts an $\alpha+\beta$ fold that does not closely match any other known structures. However, careful visual inspection shows (Figure 4) that the insert domain bears a resemblance to the “Protease-associated” domain (PA domain, [Pfam:PF02225]) in terms of gross structure and orientation of insertion. A comparison of the CA_C2195 structure with the structure of an aminopeptidase from *Aneurinibacillus* sp. strain AM-1 [PDB:

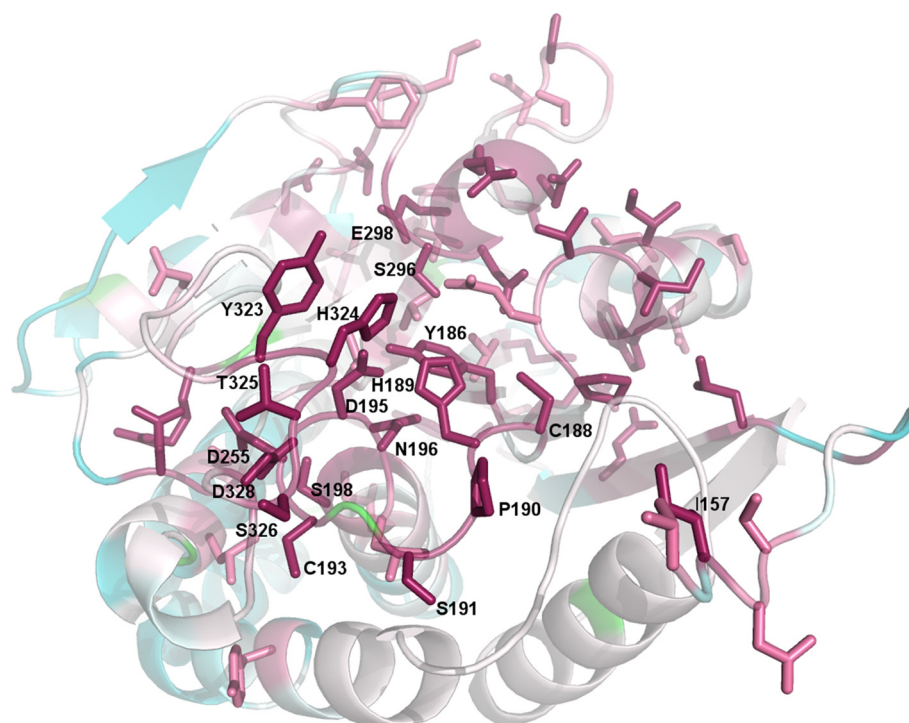


Figure 3 Residue conservation analysis in the metallopeptidase domain. The residues likely involved in activity are Asp195, His189 and His324 and have the highest conservation (dark pink, scale 9 in a range of 1 to 9 in CONSURF) across CA_C2195 homologs. The presence of other highly conserved residues around the putative active site suggests that they will also be involved in function. The least conserved residues (cyan, scale 1) in CA_C2195 are also visible.

2ek8], suggests that its DUF2172 domain is very likely derived from the PA protein domain family (Figure 4). The PA domain is similarly found inserted within several other peptidase domains, which are catalytically unrelated to each other. Interestingly, the PA domain is found inserted in some Peptidase_M28 domains at a structurally equivalent site to that of DUF2172 in DUF4910. It has been suggested that the PA domain may act as a lid, which covers the active site and may be involved in protein recognition in vacuolar sorting receptors [28]. The PA domain of aminopeptidase has a characteristic “swivelling” $\beta/\beta/\alpha$ domain fold [24]. In the DUF2172 domain in CA_C2195, there is a turn of an α -helix instead of a large β - α - β - α - β substructure on one side of the PA domain fold, whereas the remaining structures of the two domains retain overall similarity and differ only by a few minor insertion or deletions (Figure 4). Given their equivalent location relative to the peptidase domain, we propose that the DUF2172 domain has probably evolved from the PA domain in a pre-existing multi-domain context, that is, after its merger with the catalytic domain.

To study sequence conservation in DUF2172 homologs, thereby allowing the identification of residues that may be functionally important, 80 sequences ranging in identity from 47-66% were aligned and the conservation

profile used to mark-up the structure corresponding to DUF2172 (Figure 5). Numerous aromatic amino acid residues appear to be the most conserved in this domain: Trp70, Tyr98, Tyr127, Tyr131 and Tyr132. Speculatively, these residues might be important in binding to target proteins if, like the PA domain, this domain is involved in protein recognition.

C-terminal wHTH domain (HTH_47)

One of the most interesting aspects of CA_C2195 and its homologs is the presence of a unique C-terminal circularly permuted wHTH domain in conjunction with the metallopeptidase domain. A search for other proteins using Fold that are similar to this domain (residues 356–434) results in very significant hits (SSM Q-score ~ 0.4 , r.m.s.d ~ 2.0 Å between C_{α} atoms over the entire domain) with other wHTH domains, although the sequence identities of these hits are in the 15-19% range (the PDB codes of the top 4 hits are: [PDB:2xvc], [PDB:2yu3], [PDB:1cf7], [PDB:3o6b]). A Jackhmmer [29] search using default search parameters identifies matches on the third iteration to sequences corresponding to the position of MarR_2 [Pfam:PF12802] transcription factors. Structures of sequences belonging to MarR_2 also adopt a wHTH topology, supporting the structure-based search at the sequence level, but clearly show that this wHTH

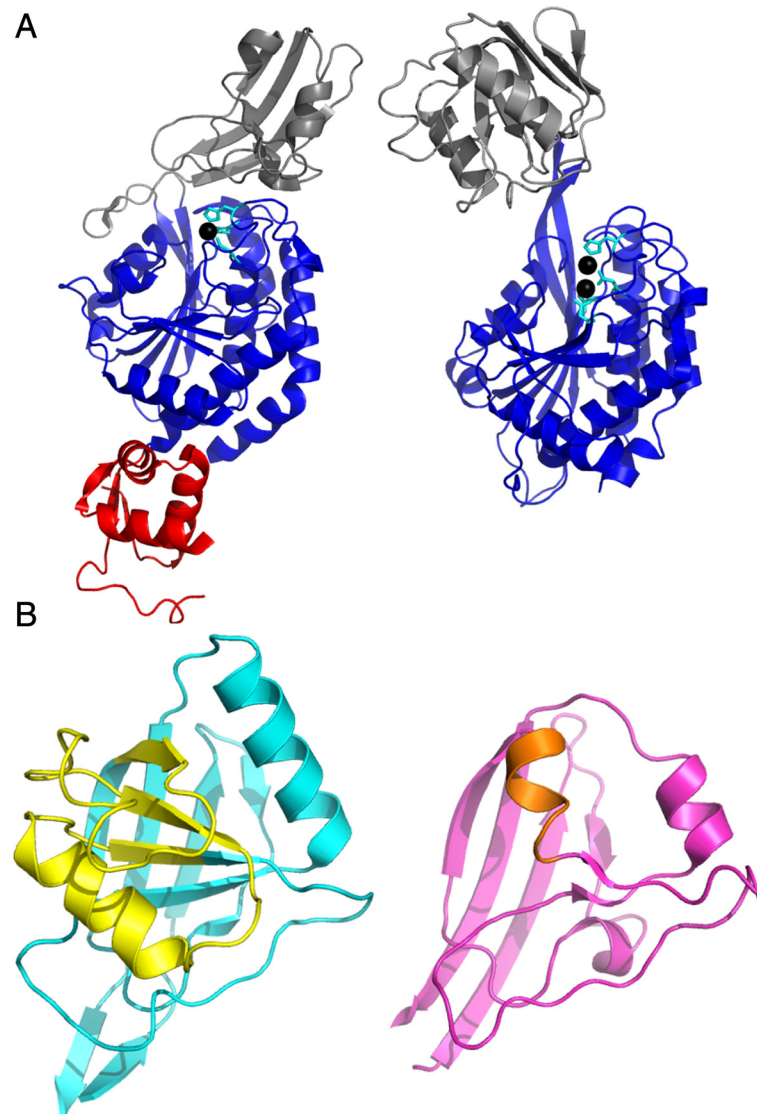


Figure 4 Comparison of the DUF2172 and PA domains. (A) The DUF2172 domain in CA_C2195 (grey, left panel) bears some fold resemblance to the PA (Protease-associated) domain (grey, right panel), which has been observed in a Peptidase_M28 family member [PDB:2ek8, right panel) even though there is no discernible sequence identity. Analogous to the proposed role of the PA domain, the DUF2172 domain may be forming a lid modulating access to the peptidase active site and may also be involved in substrate recognition and specificity. Molecules in the panels are oriented such that the peptidase domains in both superimpose. The active sites in both molecules are shown in cyan sticks and black spheres. (B) A large substructure of the PA domain fold (yellow, left panel) is replaced with a turn of α -helix in DUF2172 (orange, right panel).

has diverged in terms of sequence from other known wHTH domains. To identify residues that may be functionally important based on sequence conservation, 43 homologs ranging in sequence identity from 36%-79% were used, out of which only one sequence had higher than 53% sequence identity (Figure 6). This revealed that residues with the highest conservation are surface exposed in this domain, suggesting that their role may be in surface-mediated contacts.

The juxtaposition of a metallopeptidase with a wHTH domain is not common, although a similar domain

architecture has been observed previously in methionine aminopeptidase-2 (Met-AP2). The wHTH domain in Met-AP2 is inserted within a distinct peptidase domain belonging to the Peptidase_M24 family [Pfam:PF00557], which includes the creatinases and prolidases. In Met-AP2, the inserted wHTH domain has been shown to be important for the recognition and specificity of the substrate, namely, the amino-termini of proteins processed by the enzyme [30] [PDB:1boa]. Interestingly, comparison of the CA_C2195 and Met-AP2 wHTH domains indicates that they have a similar permutation of the

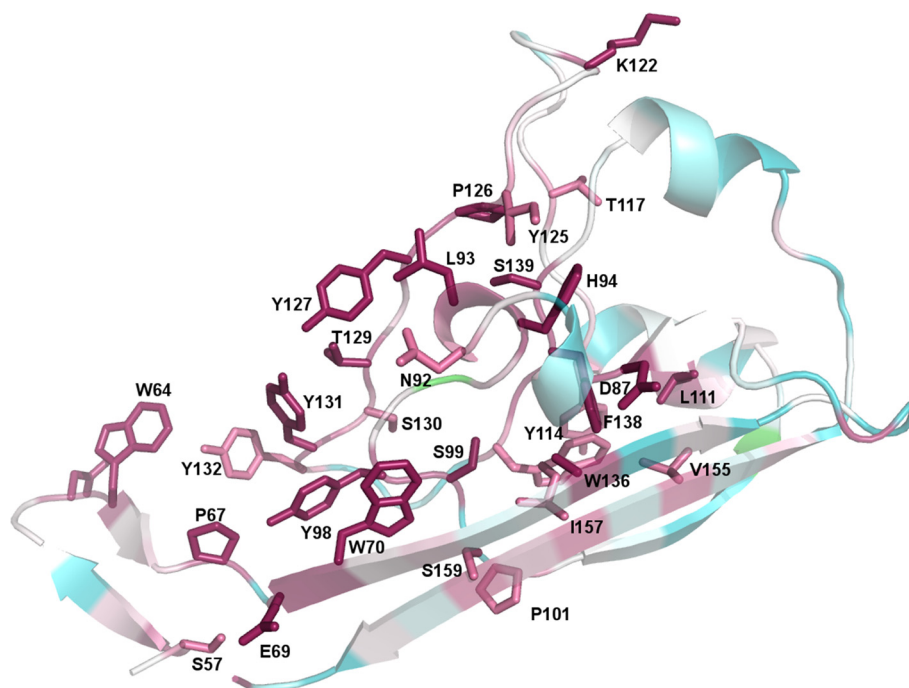


Figure 5 Residue conservation analysis in the DUF2172 domain. The presence of highly conserved aromatic residues (dark pink) including Trp70, Tyr98, Tyr127, Tyr131 and Tyr132, indicates residues that may be involved in substrate recognition if this domain has a functionality associated with substrate interactions.

wHTH domain (Figure 7). Furthermore, as in the case in the Met-AP2, the CA_C2195 wHTH domain is spatially located as a distinct module, which points away from the core catalytic domain. Thus, by analogy to the Met-AP2, we propose that the permuted wHTH might serve in a similar capacity in substrate recognition and specificity in CA_C2195 and its homologs. In a more general sense, the recognition of circularly permuted domains independently fused to two distinct classes of peptidases raises the possibility that these domains may have been more generally recruited as potential peptide-recognition modules early in the history of proteins.

Oligomeric assembly

As mentioned above, crystal packing analysis predicts a trimer as the oligomeric form in solution, which is supported by size-exclusion chromatography coupled with static light scattering. The trimeric assembly is formed by the interaction of residues in the wHTH domain (loop residues 362–368 and helix residues 389–393) with loop residues 62–64 in the insert domain and loop residues 302–305 and 293–294 in the metallopeptidase-like domain. Some of these residues forming the assembly in all 3 domains show high conservation, indicating that these are likely to be the key binding residues in the protein interaction interface. In particular, a substantial portion of the surface on one side of the wHTH appears to be responsible for mediating the monomer protein

interactions in the oligomeric state, covering the majority of the highly conserved residues. These observations strongly suggest that the wHTH functions in mediating protein interactions in the oligomeric state.

Conserved gene neighborhoods point to a potential role in modified carbohydrate biosynthesis

As described above, the sequence and structural analysis indicates that the conserved residue pattern does not conform to any known peptidase active site. Therefore, to better understand the possible biochemical function of CA_C2195, we used contextual information gleaned from conserved gene neighborhoods. Several studies have shown that genome context or conserved gene-neighborhoods provide information in terms of functionally interacting partners or complexes to which particular proteins belong [31-33]. Interestingly, we found a strong gene-neighborhood association (and in some cases gene fusions) between CA_C2195 and its homologs with several genes involved in biosynthesis of a modified carbohydrate across several phylogenetically distinct bacterial taxa, namely actinobacteria, firmicutes, cyanobacteria, bacteroidetes, planctomycetes (Table 2, Additional file 1, Additional file 2). This wide phyletic spread of the association suggests that the co-occurrence is likely to be of functional importance for these enzymes. Among the strongly linked genes we found those coding for a sugar epimerase/dehydratase,

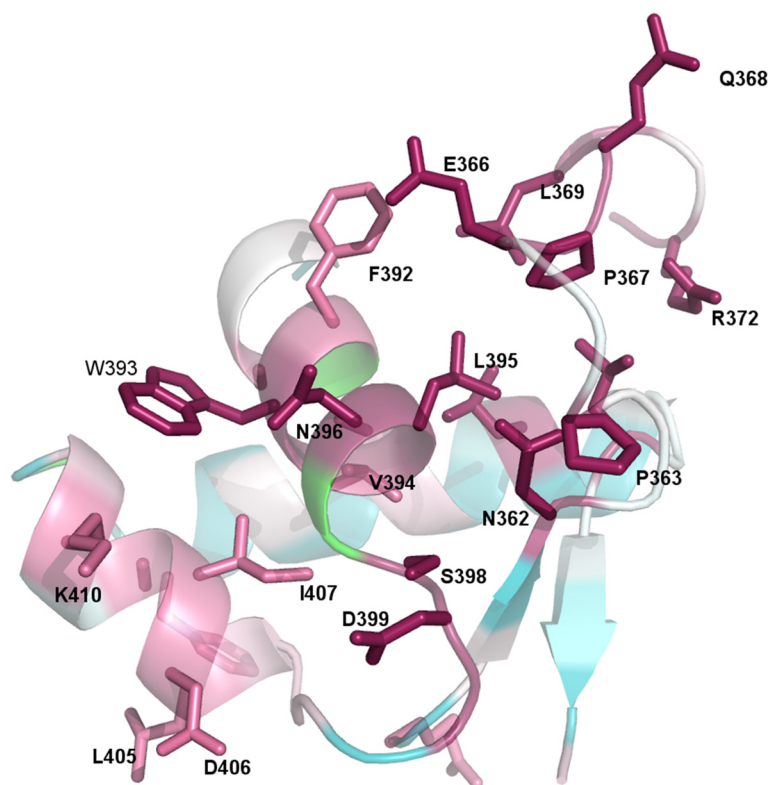


Figure 6 Residue conservation analysis in C-terminal wHTH domain. Residues in the C-terminal circularly permuted wHTH domain that might be involved in substrate recognition and specificity based on their high conservation across CA_C2195 homologs (residues with highest conservation are in dark pink) are visualized.

a sugar phosphate nucleotidyltransferase, a glycosyl transferase, an aminosugar *N*-acetyltransferase and a SAM-dependent sugar methylase. These enzymes are all associated with carbohydrate metabolism, and are indicative that a modified sugar is being synthesized by the action of multiple enzymes and converted to a nucleotide diphosphate linked sugar by the action of the nucleotidyltransferase. This NDP-sugar then probably serves as the substrate for the glycosyltransferase that transfers it to a target moiety. However, examination of the predicted operons also reveals variability especially in terms of the numbers of genes encoding for glycosyltransferases, sugar methylases and other auxiliary modifying enzymes such as those that act on sugars to add acyl groups (Table 2, Additional file 1, Additional file 2).

This linkage between a gene coding for a peptidase-like protein with a carbohydrate biosynthetic system could be explained in at least three alternative ways: 1) CA_C2195 protein and its homologs are post-translationally glycosylated; 2) The DUF4910 domain cleaves target proteins alongside their modification by glycosylation; 3) The DUF4910 domain actually participates in the biosynthesis of a sugar-derived metabolite by catalyzing a reaction biochemically distinct from the classical peptidase reaction.

Circumstantial evidence supports the third alternative. First, as discussed above, the CA_C2195-like genes do not seem to preserve the conventional metallopeptidase active site. Moreover, these genes are usually embedded in the middle of an operon with genes for carbohydrate-modifying enzymes on either side. Second, these operons do not show any linked genes coding for other potential target proteins. Third, in several cases these operons contain genes for a transmembrane carbohydrate export protein (related to the O-antigen and teichoic acid export proteins) and transmembrane sugar pyruvyltransferase (Table 2, Additional file 1, Additional file 2). These proteins suggest that the modified carbohydrate is unlikely to be used to modify intracellular proteins; rather it is likely to be translocated to the cell-surface and used as part of a surface polysaccharide/lipopolysaccharide. In light of these observations it is possible that DUF4910 is involved in modification of the sugar-derived metabolites, perhaps via transacylation of a peptide/glutamine to an amino sugar. In principle, they could also be used in an amidase reaction for deacylation of a sugar amide, but this would imply that they utilize distinctive active site residues (see above). TMPRED (www.ch.embnet.org/software/TMPRED_form.html) predicts one significant transmembrane helix in CA_C2195 (residues 192–213, inside to outside, score

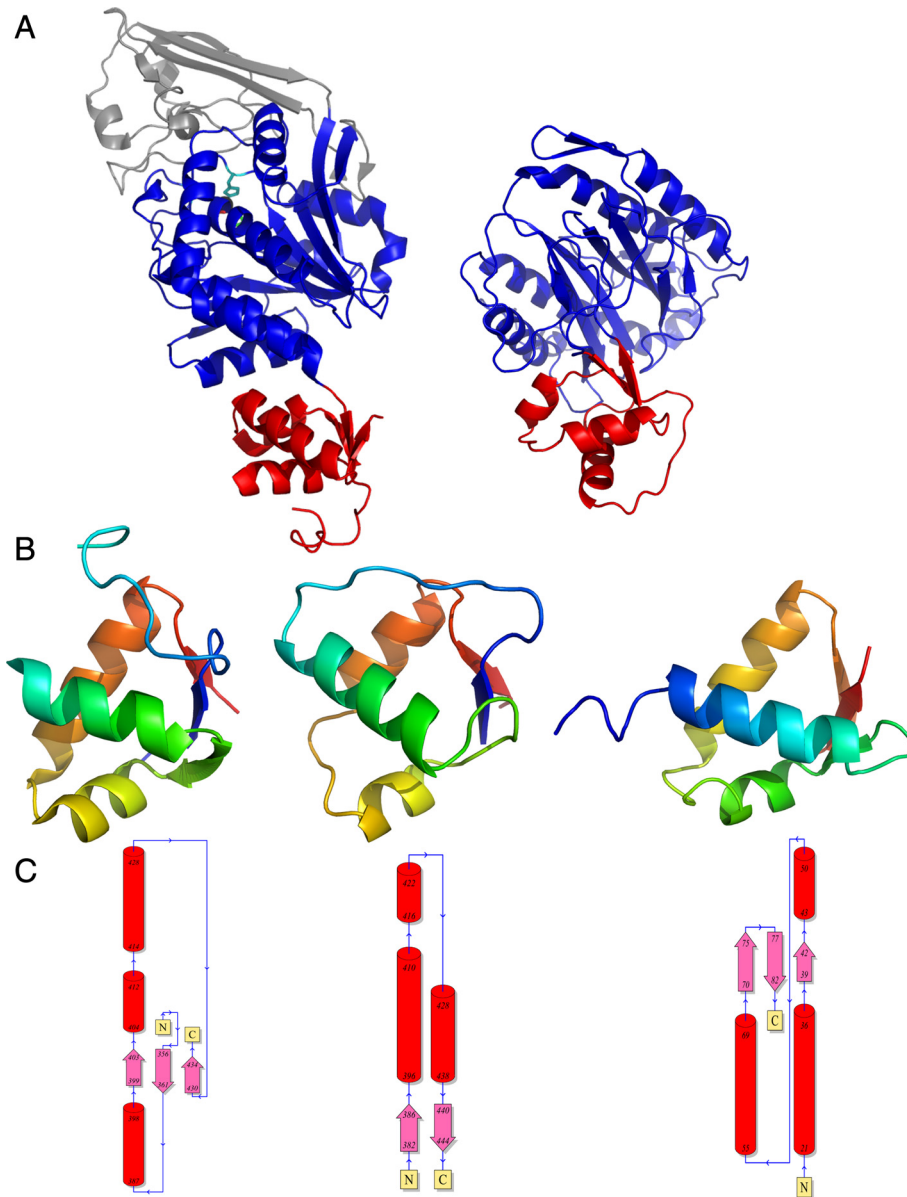


Figure 7 Comparison of wHTH domains. (A) The circularly permuted wHTH domain observed in CA_C2195 (red, left panel) resembles another circularly permuted wHTH domain present in the structure of a Peptidase_M24 family aminopeptidase [PDB:1boa] (red, right panel), and may be involved in substrate recognition and specificity. (B) The wHTH domain in CA_C2195 (left) is compared to the wHTH domain from Peptidase_M24 [PDB:1boa] (center) and a wHTH domain from a transcription factor [PDB:1cf7] (right), which was one of the proteins most similar in structure to the CA_C2195 wHTH domain. Each domain is colored from the N-terminus (blue) to the C-terminus (red). All domains are in a similar orientation. (C) Topology diagrams for the three domains in (B) in the same order depicting the arrangement of secondary structure elements and circular permutation in the CA_C2195 wHTH compared to the transcription factor wHTH. Cylinders represent α -helices, arrows represent β -strands and the N- and C-termini are labeled.

557), which is buried in the metallopeptidase-like domain (and therefore incorrectly predicted to be transmembrane), and Phobius [34] predicts most of the protein to be extracellular, with a dip where the possible transmembrane helix might be. SignalP [35] fails to predict a signal peptide and so it is unknown how this protein gets into the periplasm or if it is extracellular.

Conclusions

The crystal structure of CA_C2195 and subsequent sequence-structure-function analysis shows that CA_C2195 (and ~200 homologs, ranging in sequence identity from 40-60%) is a three-domain protein, which includes a C-terminal wHTH domain and a DUF2172 domain inserted in the DUF4910 metallopeptidase-like domain. The

Table 2 Gene neighborhood analysis

GI number	Gene	Locus	Protein	Product
15895455	.	CA_C2186	NP_348804.1	Glycosyltransferase
15895456	spsE	CA_C2187	NP_348805.1	N-acetylneuraminic acid synthase + SAF sugar-binding (condenses of phosphoenolpyruvate and N-acetylmannosamine)
15895457	.	CA_C2188	NP_348806.1	Glycosyltransferase
15895458	.	CA_C2189	NP_348807.1	ATP-grasp amino acyl ligase
15895459	spsF	CA_C2190	NP_348808.1	Sugar phosphate nucleotidyltransferase
15895460	.	CA_C2192	NP_348809.1	Glyoxylase
15895461	.	CA_C2193	NP_348810.1	DUF3880 + Glycosyltransferase
15895462	.	CA_C2194	NP_348811.1	nucleoside-diphosphate sugar epimerase
15895463	.	CA_C2195	NP_348812.1	Peptidase-like (peptidase_MH superfamily)
15895464	.	CA_C2196	NP_348813.1	Methyltransferase + Glycosyltransferase (currently annotated as: MAF_flag10, DUF115)
15895465	.	CA_C2197	NP_348814.1	aminosugar N-acetyltransferase
15895466	acpA	CA_C2198	NP_348815.1	acyl carrier protein
15895467	.	CA_C2199	NP_348816.1	aminosugar N-acetyltransferase + HAD Phosphatase

presence of the PA domain-like DUF2172 domain shows similarity in domain architecture to some members of the Peptidase_M28 family [PDB: 2ek8]. However, the presence of a C-terminal wHTH domain in CA_C2195, shows similarity to domain architectures found in Peptidase_M24 [PDB:1boa]. Analysis of sequence conservation reveals a cluster of non-sequential, highly conserved residues on the surface of the structure of CA_C2195, which are likely to be functionally important, some of which in the wHTH are involved in forming the protein interaction interface in the oligomeric form. It is possible that these proteins do not have any metallopeptidase activity because of the absence of all the catalytic residues that are expected from other characterized members of this peptidase clan. Based on gene neighborhood analysis, we propose that CA_C2195 and its homologs could be involved in the biosynthesis of modified carbohydrates. Given the importance of cell surface polysaccharides in inter-organismal interactions, further characterization of the biochemical activity of this protein is likely to be of interest in the case of pathogens that encode a CA_C2195 like gene, such as *Brucella* and *Campylobacter*.

Methods

Protein production and crystallization of CA_C2195 was carried out by standard JCSG protocols [36-38]. Data collection was performed at SSRL beamline 9-2. The crystal structure was determined by MAD phasing using a selenomethionine-derivatized protein. X-ray data collection, processing, structure solution, tracing, crystallographic refinement and model building were performed using BLU-ICE [39], MOSFLM [40]/SCALA [41], SHELXD [42]/AUTO-SHARP [43], ARP/wARP [44], REFMAC [45] and COOT [46]. To find homologs for sequence conservation analysis,

PSI-BLAST was used to search the Uniref90 database in 3 iterations with e-value cutoff of 0.0001, searching for a maximum of 150 homologs between 35-95%, using MAFFT as the alignment method MAFFT, Bayesian calculation method, and JTT evolutionary substitution method, as implemented in CONSURF [47]. Figure 2 was prepared using Chimera (<http://www.cgli.ucsf.edu/chimera>) and all others were prepared using PyMOL [48]. The topology diagrams in Figure 7C are from PDBsum [49]. Gene neighborhood was comprehensively analyzed using a custom Perl script using the CA_C2195 gene or its homolog as anchors. This script uses either the PTT file (downloadable from the NCBI ftp site) or the Genbank file in the case of whole genome shot gun sequences to extract 20 gene neighbors on the 3' and 5' sides of a given query gene. The protein sequences of all neighbors were clustered using the BLASTCLUST program (<ftp://ftp.ncbi.nih.gov/blast/documents/blastclust.html>) to identify related sequences in gene neighborhoods. Each cluster of homologous proteins were then assigned an annotation based on the domain architecture or conserved shared domain which were detected using Pfam models and in-house profiles run using RPS-BLAST [50]. This allowed an initial annotation of gene neighborhoods and their grouping based on conservation of neighborhood associations. In further analysis, care was taken to ensure that genes are unidirectional on the same strand of DNA and shared a putative common promoter to be counted as a single operon. If they were head to head on opposite strands they were examined for potential bidirectional promoter sharing patterns. A total of 4789 representative bacterial and archaeal genomes were analyzed for the detection of CA_C2195 orthologs. These genomes spanned representatives of all currently known major lineages of bacteria and archaea. From these 229 genomes were

identified as having CA_C2195 orthologs with gene neighborhoods and further analysis was performed on this subset of genomes. Within this subset conserved gene neighborhood associations were detected in 10 major bacterial clades namely actinobacteria, firmicutes, cyanobacteria, planctomycetes, bacteroidetes, nitrospirae, alphaproteobacteria, betaproteobacteria, epsilonproteobacteria and spirochaetes. Using a simulation with sampling with no replacement and the average genome size of 4000 genes we found that such genes as described above coming together by chance alone in such neighborhoods was $p < 10^{-9}$. For all bioinformatics analyses that were performed using homologs within a family for comparison, the chosen sequences were well over the inclusion threshold for the family as built.

Availability of supporting data

Atomic coordinates and experimental structure factors for CA_C2195 have been deposited in the Protein Data Bank (www.wwpdb.org) with PDB accession code 3k9t (DOI:10.2210/pdb3k9t/pdb).

Additional files

Additional file 1: Conserved gene neighborhoods with representatives of other bacterial lineages. Description of data: Table describing genomic context in support of Table 2.

Additional file 2: Gene neighborhoods from all organisms containing an ortholog of CA_C2195. Description of data: Table describing genomic context in support of Table 2.

Competing interests

The authors declare that they have no competing interests.

Authors' contributions

DD performed x-ray structure determination; DD, LA, AGM, NDR, RDF and PC analyzed the sequence-structure-function relationships and prepared the manuscript; and AB and AG provided assistance on the analysis of DUF proteins and critically reviewed the manuscript. All authors read and approved the final manuscript.

Acknowledgements

We are grateful to the Sanford Burnham Medical Research Institute and University of California, San Diego, for hosting the DUF Annotation Jamboree in June 2013, which allowed the authors to collaborate on this work. We would like to thank all the other participants of this workshop for their intellectual contributions to this work: Herbert Axelrod, Yuanyuan Chang, Ruth Y. Eberhardt, William Hwang, Lukasz Jaroszewski, Padmaja Natarajan, Marco Punta, Daniel Rigden, Mayya Sedova, Anna Sheydina and John Wooley. We would like to thank Mayya Sedova for assistance in preparing some of the figures. We thank members of the JCSG High-Throughput Structural Biology pipeline for their contribution to this work. This work was supported in part by National Institutes of Health, USA, grant U54 GM094586 from the NIGMS Protein Structure Initiative to JCSG; National Science Foundation grants IIS-0646708 and IIS-1153617; UK Medical Research Council grant MC_U105192716 to AGM; intramural funds of the National Library of Medicine, USA, to LA; NIH grant R01GM101457 to AG; Howard Hughes Medical Institute to RDF; and Wellcome Trust grant WT077044/Z/05/Z for funding for open access charges. Portions of this research were carried out at the Stanford Synchrotron Radiation Lightsource, a Directorate of SLAC National Accelerator Laboratory and an Office of Science User Facility operated for the U.S. Department of Energy Office of Science by Stan-

ford University. The SSRL Structural Molecular Biology Program is supported by the DOE Office of Biological and Environmental Research, and by the National Institutes of Health, National Institute of General Medical Sciences (including P41GM103393). The contents of this publication are solely the responsibility of the authors and do not necessarily represent the official views of DOE, NSF, NIGMS or NIH.

Author details

¹Joint Center for Structural Genomics, La Jolla, CA, USA. ²Stanford Synchrotron Radiation Lightsource, SLAC National Accelerator Laboratory, Menlo Park, CA, USA. ³MRC Laboratory of Molecular Biology, Cambridge Biomedical Campus, Francis Crick Avenue, Cambridge CB2 0QH, UK. ⁴Wellcome Trust Sanger Institute, Wellcome Trust Genome Campus, Hinxton, Cambridgeshire CB10 1SA, UK. ⁵European Molecular Biology Laboratory, European Bioinformatics Institute, Wellcome Trust Genome Campus, Hinxton, Cambridgeshire CB10 1SD, UK. ⁶Howard Hughes Medical Institute, Janelia Farm Research Campus, 19700 Helix Drive, Ashburn, VA, USA. ⁷Program on Bioinformatics and Systems Biology, Sanford-Burnham Medical Research Institute, La Jolla, CA, USA. ⁸National Center for Biotechnology Information, National Library of Medicine, Building 38A, Bethesda, MD, USA.

Received: 20 July 2013 Accepted: 4 March 2014

Published: 19 March 2014

References

1. Altschul SF, Madden TL, Schaffer AA, Zhang J, Zhang Z, Miller W, Lipman DJ: **Gapped BLAST and PSI-BLAST: a new generation of protein database search programs.** *Nucleic Acids Res* 1997, **25**(17):3389–3402.
2. Dessailly BH, Nair R, Jaroszewski L, Fajardo JE, Kouranov A, Lee D, Fiser A, Godzik A, Rost B, Orengo C: **PSI-2: structural genomics to cover protein domain family space.** *Structure* 2009, **17**(6):869–881.
3. Norvell JC, Berg JM: **Update on the protein structure initiative.** *Structure* 2007, **15**(12):1519–1522.
4. Finn RD, Bateman A, Clements J, Coggill P, Eberhardt RY, Eddy SR, Heeger A, Hetherington K, Holm L, Mistry J, Sonnhammer EL, Tate J, Punta M: **Pfam: the protein families database.** *Nucleic Acids Res* 2014, **42**(1):D222–D230.
5. Rowsell S, Pauptit RA, Tucker AD, Melton RG, Blow DM, Brick P: **Crystal structure of carboxypeptidase G2, a bacterial enzyme with applications in cancer therapy.** *Structure* 1997, **5**(3):337–347.
6. Bitto E, Bingman CA, Wesenberg GE, McCoy JG, Phillips GN Jr: **Structure of aspartoacylase, the brain enzyme impaired in Canavan disease.** *Proc Natl Acad Sci USA* 2007, **104**(2):456–461.
7. Rawlings ND, Barrett AJ: **Introduction: metalloproteases and their clans.** In *Handbook of Proteolytic Enzymes*. 3rd edition. Edited by Rawlings ND, Salvesen GS. Amsterdam: Elsevier; 2013:325–370.
8. Auld DS: **Catalytic Mechanisms for metalloproteases.** In *Handbook of Proteolytic Enzymes*. 3rd edition. Edited by Rawlings ND, Salvesen GS. Amsterdam: Elsevier; 2013:370–396.
9. Rawlings ND, Barrett AJ, Bateman A: **MEROPS: the database of proteolytic enzymes, their substrates and inhibitors.** *Nucleic Acids Res* 2012, **40**(Database issue):D343–D350.
10. Hermann JC, Marti-Arbona R, Fedorov AA, Fedorov E, Almo SC, Shoichet BK, Raushel FM: **Structure-based activity prediction for an enzyme of unknown function.** *Nature* 2007, **448**(7155):775–779.
11. Das D, Lee WS, Grant JC, Chiu HJ, Farr CL, Vance J, Klock HE, Knuth MW, Miller MD, Elsliger MA, Deacon AM, Godzik A, Lesley SA, Kornfeld S, Wilson IA: **Structure and function of the DUF2233 domain in bacteria and in the human mannose 6-phosphate uncovering enzyme.** *J Biol Chem* 2013, **288**(23):16789–16799.
12. Das D, Hervé M, Feuerhelm J, Farr CL, Chiu HJ, Elsliger MA, Knuth MW, Klock HE, Miller MD, Godzik A, Lesley SA, Deacon AM, Mengin-Lecreulx D, Wilson IA: **Structure and function of the first full-length murein peptide ligase (Mpl) cell wall recycling protein.** *PLoS One* 2011, **6**(3):e17624.
13. Das D, Moiani D, Axelrod HL, Miller MD, McMullan D, Jin KK, Abdubek P, Astakhova T, Burra P, Carlton D, Chiu HJ, Clayton T, Deller MC, Duan L, Ernst D, Feuerhelm J, Grant JC, Grzechnik A, Grzechnik SK, Han GW, Jaroszewski L, Klock HE, Knuth MW, Kozbial P, Krishna SS, Kumar A, Marciano D, Morse AT, Nigoghossian E, Okach L, et al: **Crystal structure of the first eubacterial Mre11 nuclease reveals novel features that may discriminate substrates during DNA repair.** *J Mol Biol* 2010, **397**(3):647–663.

14. Das D, Hyun H, Lou Y, Yokota H, Kim R, Kim SH: **Crystal structure of a novel single-stranded DNA binding protein from *Mycoplasma pneumoniae*.** *Proteins* 2007, **67**(3):776–782.
15. Shin DH, Hou J, Chandonia JM, Das D, Choi IG, Kim R, Kim SH: **Structure-based inference of molecular functions of proteins of unknown function from Berkeley Structural Genomics Center.** *J Struct Funct Genomics* 2007, **8**(2–3):99–105.
16. Goodacre NF, Gerloff DL, Uetz P: **Protein domains of unknown function are essential in bacteria.** *mBio* 2013, **5**(1):e00744–13. doi:10.1128/mBio.00744-13.
17. Diederichs K, Karplus PA: **Improved R-factors for diffraction data analysis in macromolecular crystallography.** *Nat Struct Biol* 1997, **4**(4):269–275.
18. Cruickshank DW: **Remarks about protein structure precision.** *Acta Crystallogr D Biol Crystallogr* 1999, **55**(Pt 3):583–601.
19. Weiss MS, Hilgenfeld R: **On the use of the merging R factor as a quality indicator for X-ray data.** *J Appl Crystallogr* 1997, **30**:203–205.
20. Weiss MS, Metzner HJ, Hilgenfeld R: **Two non-proline cis peptide bonds may be important for factor XIII function.** *FEBS Lett* 1998, **423**(3):291–296.
21. Krissinel E, Henrick K: **Inference of macromolecular assemblies from crystalline state.** *J Mol Biol* 2007, **372**(3):774–797.
22. Krissinel E, Henrick K: **Secondary-structure matching (SSM), a new tool for fast protein structure alignment in three dimensions.** *Acta Crystallogr D Biol Crystallogr* 2004, **60**(Pt 12 Pt 1):2256–2268.
23. Aravind L, Anantharaman V, Balaji S, Babu MM, Iyer LM: **The many faces of the helix-turn-helix domain: transcription regulation and beyond.** *FEMS Microbiol Rev* 2005, **29**(2):231–262.
24. Andreeva A, Howorth D, Chandonia JM, Brenner SE, Hubbard TJ, Chothia C, Murzin AG: **Data growth and its impact on the SCOP database: new developments.** *Nucleic Acids Res* 2008, **36**(Database issue):D419–D425.
25. Botelho TO, Guevara T, Marrero A, Arede P, Fluxa VS, Reymond JL, Oliveira DC, Gomis-Ruth FX: **Structural and functional analyses reveal that *Staphylococcus aureus* antibiotic resistance factor HmrA is a zinc-dependent endopeptidase.** *J Biol Chem* 2011, **286**(29):25697–25709.
26. Schilling S, Cynis H, von Bohlen A, Hoffmann T, Wermann M, Heiser U, Buchholz M, Zunkel K, Demuth HU: **Isolation, catalytic properties, and competitive inhibitors of the zinc-dependent murine glutamyl cyclase.** *Biochemistry* 2005, **44**(40):13415–13424.
27. Cheng Y, Zak O, Aisen P, Harrison SC, Walz T: **Structure of the human transferrin receptor-transferrin complex.** *Cell* 2004, **116**(4):565–576.
28. Luo X, Hofmann K: **The protease-associated domain: a homology domain associated with multiple classes of proteases.** *Trends Biochem Sci* 2001, **26**(3):147–148.
29. Finn RD, Clements J, Eddy SR: **HMMER web server: interactive sequence similarity searching.** *Nucleic Acids Res* 2011, **39**(Web Server issue):W29–W37.
30. Liu S, Widom J, Kemp CW, Crews CM, Clardy J: **Structure of human methionine aminopeptidase-2 complexed with fumagillin.** *Science* 1998, **282**(5392):1324–1327.
31. Aravind L: **Guilt by association: contextual information in genome analysis.** *Genome Res* 2000, **10**(8):1074–1077.
32. Huynen M, Snel B, Lathe W 3rd, Bork P: **Predicting protein function by genomic context: quantitative evaluation and qualitative inferences.** *Genome Res* 2000, **10**(8):1204–1210.
33. Overbeek R, Begley T, Butler RM, Choudhuri JV, Chuang HY, Cohoon M, de Crécy-Lagard V, Diaz N, Disz T, Edwards R, Fonstein M, Frank ED, Gerdes S, Glass EM, Goesmann A, Hanson A, Iwata-Reuyl D, Jensen R, Jamshidi N, Krause L, Kubal M, Larsen N, Linke B, McHardy AC, Meyer F, Neuweger H, Olsen G, Olson R, Osterman A, Portnoy V, et al: **The subsystems approach to genome annotation and its use in the project to annotate 1000 genomes.** *Nucleic Acids Res* 2005, **33**(17):5691–5702.
34. Kall L, Krogh A, Sonnhammer EL: **Advantages of combined transmembrane topology and signal peptide prediction—the Phobius web server.** *Nucleic Acids Res* 2007, **35**(Web Server issue):W429–W432.
35. Petersen TN, Brunak S, von Heijne G, Nielsen H: **SignalP 4.0: discriminating signal peptides from transmembrane regions.** *Nat Methods* 2011, **8**(10):785–786.
36. Klock HE, Koesema EJ, Knuth MW, Lesley SA: **Combining the polymerase incomplete primer extension method for cloning and mutagenesis with microscreening to accelerate structural genomics efforts.** *Proteins* 2008, **71**(2):982–994.
37. Lesley SA, Kuhn P, Godzik A, Deacon AM, Mathews I, Kreuzsch A, Spraggon G, Klock HE, McMullan D, Shin T, Vincent J, Robb A, Brinen LS, Miller MD, McPhillips TM, Miller MA, Scheibe D, Canaves JM, Guda C, Jaroszewski L, Selby TL, Elsiger MA, Wooley J, Taylor SS, Hodgson KO, Wilson IA, Schultz PG, Stevens RC: **Structural genomics of the *Thermotoga maritima* proteome implemented in a high-throughput structure determination pipeline.** *Proc Natl Acad Sci USA* 2002, **99**(18):11664–11669.
38. Elsiger MA, Deacon AM, Godzik A, Lesley SA, Wooley J, Wuthrich K, Wilson IA: **The JCSG high-throughput structural biology pipeline.** *Acta Crystallogr Sect F: Struct Biol Cryst Commun* 2010, **66**(Pt 10):1137–1142.
39. McPhillips TM, McPhillips SE, Chiu HJ, Cohen AE, Deacon AM, Ellis PJ, Garman E, Gonzalez A, Sauter NK, Phizackerley RP, Soltis SM, Kuhn P: **BLU-Ice and the Distributed Control System: software for data acquisition and instrument control at macromolecular crystallography beamlines.** *J Synchrotron Radiat* 2002, **9**(Pt 6):401–406.
40. Collaborative Computing Project: **The CCP4 suite: programs for protein crystallography.** *Acta Crystallogr. Sect. D Biol. Crystallogr* 1994, **50**:760–763.
41. Collaborative Computing Project N: **The CCP4 suite: programs for protein crystallography.** *Acta Crystallogr D Biol Crystallogr* 1994, **50**(Pt 5):760–763.
42. Sheldrick GM: **A short history of SHELX.** *Acta Crystallogr A* 2008, **64**(Pt 1):112–122.
43. Vonrhein C, Blanc E, Roversi P, Bricogne G: **Automated structure solution with autoSHARP.** *Methods Mol Biol* 2007, **364**:215–230.
44. Langer G, Cohen SX, Lamzin VS, Perrakis A: **Automated macromolecular model building for X-ray crystallography using ARP/wARP version 7.** *Nat Protoc* 2008, **3**(7):1171–1179.
45. Winn MD, Murshudov GN, Papiz MZ: **Macromolecular TLS refinement in REFMAC at moderate resolutions.** *Methods Enzymol* 2003, **374**:300–321.
46. Emsley P, Cowtan K: **Coot: model-building tools for molecular graphics.** *Acta Crystallogr D Biol Crystallogr* 2004, **60**(Pt 12 Pt 1):2126–2132.
47. Ashkenazy H, Erez E, Martz E, Pupko T, Ben-Tal N: **ConSurf 2010: calculating evolutionary conservation in sequence and structure of proteins and nucleic acids.** *Nucleic Acids Res* 2010, **38**(Web Server issue):W529–W533.
48. DeLano WL: *The PyMOL Molecular Graphics System.* Palo Alto, CA, USA: DeLano Scientific LLC; 2008.
49. Laskowski RA: **PDBsum new things.** *Nucleic Acids Res* 2009, **37**(Database issue):D355–D359.
50. Schaffer AA, Wolf YI, Ponting CP, Koonin EV, Aravind L, Altschul SF: **IMPALA: matching a protein sequence against a collection of PSI-BLAST-constructed position-specific score matrices.** *Bioinformatics* 1999, **15**(12):1000–1011.

doi:10.1186/1471-2105-15-75

Cite this article as: Das et al.: Structure and computational analysis of a novel protein with metallopeptidase-like and circularly permuted winged-helix-turn-helix domains reveals a possible role in modified polysaccharide biosynthesis. *BMC Bioinformatics* 2014 **15**:75.

Submit your next manuscript to BioMed Central and take full advantage of:

- Convenient online submission
- Thorough peer review
- No space constraints or color figure charges
- Immediate publication on acceptance
- Inclusion in PubMed, CAS, Scopus and Google Scholar
- Research which is freely available for redistribution

Submit your manuscript at
www.biomedcentral.com/submit

