

# UCLA

## UCLA Previously Published Works

### Title

Randomized Phase III Noninferiority Study Comparing Two Radiotherapy Fractionation Schedules in Patients With Low-Risk Prostate Cancer

### Permalink

<https://escholarship.org/uc/item/43w6585z>

### Journal

Journal of Clinical Oncology, 34(20)

### ISSN

0732-183X

### Authors

Lee, W Robert  
Dignam, James J  
Amin, Mahul B  
et al.

### Publication Date

2016-07-10

### DOI

10.1200/jco.2016.67.0448

Peer reviewed

# Randomized Phase III Noninferiority Study Comparing Two Radiotherapy Fractionation Schedules in Patients With Low-Risk Prostate Cancer

W. Robert Lee, James J. Dignam, Mahul B. Amin, Deborah W. Bruner, Daniel Low, Gregory P. Swanson, Amit B. Shah, David P. D'Souza, Jeff M. Michalski, Ian S. Dayes, Samantha A. Seaward, William A. Hall, Paul L. Nguyen, Thomas M. Pisansky, Sergio L. Faria, Yuhchayau Chen, Bridget F. Koontz, Rebecca Paulus, and Howard M. Sandler

See accompanying editorial on page 2323

Author affiliations appear at the end of this article.

Published online ahead of print at [www.jco.org](http://www.jco.org) on April 4, 2016.



Processed as a Rapid Communication manuscript.

Supported by National Cancer Institute Grants No. U10CA21661 (Radiation Therapy Oncology Group Statistical Operations), U10CA37422 (Community Clinical Oncology Program), CA81647 (Advanced Technology Quality Assurance Center), U10CA180868 (NRG Oncology Operations), and U10CA180822 (NRG Oncology Data Monitoring Committee).

Terms in [blue](#) are defined in the glossary, found at the end of this article and online at [www.jco.org](http://www.jco.org).

Presented in part at the 57th Annual Meeting of the American Society for Radiation Oncology, San Antonio, TX, September 18-21, 2015, and at the 2016 American Society of Clinical Oncology Genitourinary Symposium, San Francisco, CA, January 7-9, 2016.

Authors' disclosures of potential conflicts of interest are found in the article online at [www.jco.org](http://www.jco.org). Author contributions are found at the end of this article.

Corresponding author: W. Robert Lee, MD, MS, MEd, Department of Radiation Oncology, Duke University Medical Center, Box 3085, Durham, NC 27710; e-mail: [w.robert.lee@duke.edu](mailto:w.robert.lee@duke.edu).

© 2016 by American Society of Clinical Oncology

0732-183X/16/3420w-2325w/\$20.00

DOI: 10.1200/JCO.2016.67.0448

## ABSTRACT

### Purpose

Conventional radiotherapy (C-RT) treatment schedules for patients with prostate cancer typically require 40 to 45 treatments that take place from > 8 to 9 weeks. Preclinical and clinical research suggest that hypofractionation—fewer treatments but at a higher dose per treatment—may produce similar outcomes. This trial was designed to assess whether the efficacy of a hypofractionated radiotherapy (H-RT) treatment schedule is no worse than a C-RT schedule in men with low-risk prostate cancer.

### Patients and Methods

A total of 1,115 men with low-risk prostate cancer were randomly assigned 1:1 to C-RT (73.8 Gy in 41 fractions over 8.2 weeks) or to H-RT (70 Gy in 28 fractions over 5.6 weeks). This trial was designed to establish (with 90% power and an  $\alpha$  of .05) that treatment with H-RT results in 5-year disease-free survival (DFS) that is not worse than C-RT by more than 7.65% (H-RT/C-RT hazard ratio [HR] < 1.52).

### Results

A total of 1,092 men were protocol eligible and had follow-up information; 542 patients were assigned to C-RT and 550 to H-RT. Median follow-up was 5.8 years. Baseline characteristics were not different according to treatment assignment. The estimated 5-year DFS was 85.3% (95% CI, 81.9 to 88.1) in the C-RT arm and 86.3% (95% CI, 83.1 to 89.0) in the H-RT arm. The DFS HR was 0.85 (95% CI, 0.64 to 1.14), and the predefined noninferiority criterion that required that DFS outcomes be consistent with HR < 1.52 was met ( $P$  < .001). Late grade 2 and 3 GI and genitourinary adverse events were increased (HR, 1.31 to 1.59) in patients who were treated with H-RT.

### Conclusion

In men with low-risk prostate cancer, the efficacy of 70 Gy in 28 fractions over 5.6 weeks is not inferior to 73.8 Gy in 41 fractions over 8.2 weeks, although an increase in late GI/genitourinary adverse events was observed in patients treated with H-RT.

*J Clin Oncol* 34:2325-2332. © 2016 by American Society of Clinical Oncology

## INTRODUCTION

External beam radiotherapy (RT) is commonly used to treat localized prostate cancer. Conventional schedules use 1.8 to 2 Gy per treatment, administered 5 days per week for > 8 to 9 weeks (40 to 45 treatments), for total doses that range from 70 to 81 Gy.<sup>1</sup> Preclinical and clinical research published during the last 15 years has suggested that the sensitivity of prostate cancer to RT is such

that **hypofractionation**—fewer treatments but at a higher dose per treatment—may increase the biologic effective dose<sup>2</sup> and improve patient outcomes. Several observational studies of hypofractionated RT (H-RT) have suggested its safety, but the lack of a randomized comparison with conventional RT (C-RT) has limited inference on the efficacy of this approach.<sup>3-5</sup>

Results from these observational studies have informed the development of several contemporary randomized clinical trials (RCTs) that compare

C-RT with H-RT. The majority of these studies tested the hypothesis that hypofractionation would improve efficacy.<sup>6-9</sup> The published results, however, have not demonstrated increased efficacy with hypofractionation.

In addition to potentially increasing the efficacy of RT, the smaller number of treatments with hypofractionation increases convenience for the patient and decreases use and health care costs. The desire to explore hypofractionation in prostate cancer is analogous to a research paradigm in breast cancer, in which RCTs have now established its safety and noninferiority to C-RT treatment schedules.<sup>10</sup>

In 2004, the Radiation Therapy Oncology Group (RTOG) decided to compare an H-RT treatment schedule with a C-RT schedule in an RCT. Given the enhanced patient convenience and the reduced costs associated with hypofractionation, a noninferiority hypothesis was chosen. The purpose of NRG Oncology RTOG 0415 was to determine whether the efficacy of a hypofractionated treatment schedule was not worse than a conventional schedule in men with low-risk prostate cancer. To our knowledge, this is the first report of this study.

## PATIENTS AND METHODS

### Trial Design and Participants

Men age > 18 years with prostate adenocarcinoma were eligible if they met the following criteria: a clinical classification of T1b to T2c (according to American Joint Committee on Cancer staging system, 6th edition),<sup>11</sup> a Gleason score of 2 to 6, and a prostate-specific antigen (PSA) < 10. Additional criteria were no nodal or distant metastatic disease, Zubrod performance status < 2, and no prior bilateral orchiectomy, chemotherapy, RT, cryosurgery, or definitive surgery for prostate cancer. Patients with another invasive cancer, other than localized basal or squamous cell skin carcinoma, were not eligible unless continually free of that cancer for a minimum of 5 years. Before study entry, evaluation required history and physical examination, including digital rectal examination, and a serum PSA within 180 days before registration. Androgen suppression was not allowed other than as a salvage therapy in the case of prostate cancer recurrence.

After institutional review board approval at each center, participants were recruited at community-based and tertiary medical sites that were members of the RTOG. Membership was established and maintained through a quality control system that was compliant with National Cancer Institute guidelines. All participants provided written informed consent before registration and were to receive protocol-specified care and follow-up at a member site. Participants did not receive compensation for joining the study, and no commercial support was provided.

### Random Assignment

This was a multicenter, stratified, parallel-group study with 1:1 random assignment approved and sponsored by the US National Cancer Institute. Participants were stratified according to PSA level (< 4 ng/mL v 4 to 10 ng/mL), Gleason score (2 to 4 v 5 to 6), and radiation modality (three-dimensional conformal RT [3D-CRT] v intensity-modulated RT [IMRT]). Participants were then randomly assigned by using the permuted block method to either a C-RT treatment schedule (73.8 Gy in 41 fractions over 8.2 weeks) or to an H-RT schedule (70 Gy in 28 fractions over 5.6 weeks).

### Treatment

RT was to be initiated within 6 weeks of registration, using either 3D-CRT or IMRT. Daily field alignment with intraprostatic fiducial markers

or other means to the prostate was required. The clinical target volume was the prostate as identified on computed tomography (CT) scan at the time of treatment planning simulation. A 3D expansion of the clinical target volume by 4 to 10 mm was used to create the planning target volume (PTV). Participants were assigned either to 73.8 Gy (C-RT) or to 70 Gy (H-RT) fraction, which was the minimum dose to  $\geq 98\%$  of the PTV. Adherence to this specification required that the maximum dose to the PTV could not exceed the prescription dose by more than 7%. Maximum dose > 7% but < 10% was a minor, acceptable variation, and  $\geq 10\%$  was a major, unacceptable variation. Dose constraints to normal tissues (bladder, rectum, penile bulb) as listed in the protocol are available in the Data Supplement. No attempt was made to treat the seminal vesicles or pelvic lymph nodes.

All RT plans were submitted as digital DICOM files to the Image-guided Therapy quality assurance Center for central quality assurance review. CT scans, target volumes, organ-at-risk contours, radiation dose distributions, dose volume histograms, and dose statistics were reviewed for compliance with protocol guidelines.

### Patient Assessment and End Points

Adverse event monitoring occurred weekly during RT. History and physical examination, assessment of adverse events, and PSA measurement were performed every 3 months for the first 2 years, every 6 months for the next 3 years, and annually thereafter. Any findings noted between scheduled evaluations were also recorded. Prostate biopsy, radionuclide bone scan, CT, or magnetic resonance imaging was used to investigate clinical findings or serum PSA elevation. These same tests, with history, examination, and serum PSA, were to be performed if there was evidence of disease progression.

The primary study aim was to compare the disease-free survival (DFS) rate between the two treatment arms. DFS events included local progression, distant metastatic progression, biochemical recurrence as defined by the RTOG Phoenix definition,<sup>12</sup> or death from any cause. Patients who experienced second primary cancers remained under observation for DFS events. Death was attributed to prostate cancer if certified primarily as such, disease progressed on salvage androgen suppression, or death resulted from an adverse effect of therapy.

Additional end points with specified noninferiority hypotheses were overall survival, prostate cancer-specific survival, time to local progression, and time to biochemical recurrence. The frequency of adverse events as defined by National Cancer Institute Common Terminology Criteria for Adverse Events (version 3) were compared between treatment arms. This report reflects information reported to the NRG Oncology Statistics and Data Management Center as of March 31, 2015.

### Statistical Methods

Sample size was determined by assuming an 85% 5-year DFS with C-RT. The trial was designed to establish with 90% power and an  $\alpha$  of .05 that H-RT results in a 5-year DFS that is not lower than C-RT by more than 7.65% (hazard ratio [HR] < 1.52). The noninferiority margin was chosen to be approximately one half of the absolute difference in 5-year DFS observed in contemporary superiority trials of dose escalation (15%) in similar patients. Under assumed failure rates and guarding against a 10% ineligible or lack of data rate, the final targeted accrual was 1,067 patients, with definitive analysis to occur after 238 DFS events. The trial was expected to accrue 20 patients per month and to reach primary end point reporting at 11 years from the start of accrual. Interim reports were provided to the external Data Monitoring Committee every 6 months. Three interim analyses were planned after 60, 120, and 179 DFS events for early rejection of both the null hypothesis and the alternative hypothesis. The boundaries for rejecting the null hypothesis were based on a Lan and DeMets  $\alpha$  spending function approach with properties similar to the O'Brien-Fleming boundary.<sup>13</sup> The futility testing used the method by Harrington et al<sup>14</sup> of testing to reject the alternative. At the third interim analysis, the Data Monitoring Committee recommended that results of the trial be disclosed. On the basis of the event information at that time

(185 [78%] of 238 events required for definitive analysis), stopping to reject the null hypothesis of inferiority required a test statistic *P* value of  $\leq .011$ , and this condition was satisfied.

All eligible patients with follow-up were included and analyzed according to assignment (modified intent-to-treat analysis), with time-to-event duration originating at random assignment. Overall survival and DFS distributions were calculated using the Kaplan-Meier method.<sup>15</sup> The cumulative incidence estimator was used for all other end points to account for competing risks.<sup>16</sup> Treatment efficacy for DFS and other end points were tested by comparing cause-specific hazards with the log-rank statistic.<sup>17</sup> Noninferiority hypotheses for each secondary end point were also defined in the study protocol. HRs with 95% CI were computed using the Cox proportional hazards regression model for the end point-specific hazard.<sup>18</sup> Frequency distributions of grade (0 to 5) for selected adverse events were compared using  $\chi^2$  tests. To evaluate the differences in risk of grade 2 or 3 events by treatment arm, 2 × 2 subtables were formed and relative risk (RR) estimates with 95% CIs were computed. Median follow-up time was computed using the Kaplan-Meier estimate of time to last follow-up date, with death considered the censoring event (reverse Kaplan-Meier method).

**RESULTS**

**Demographic Characteristics**

Between April 2006 and December 2009, 1,115 participants were enrolled as outlined in Figure 1, and 23 were excluded from

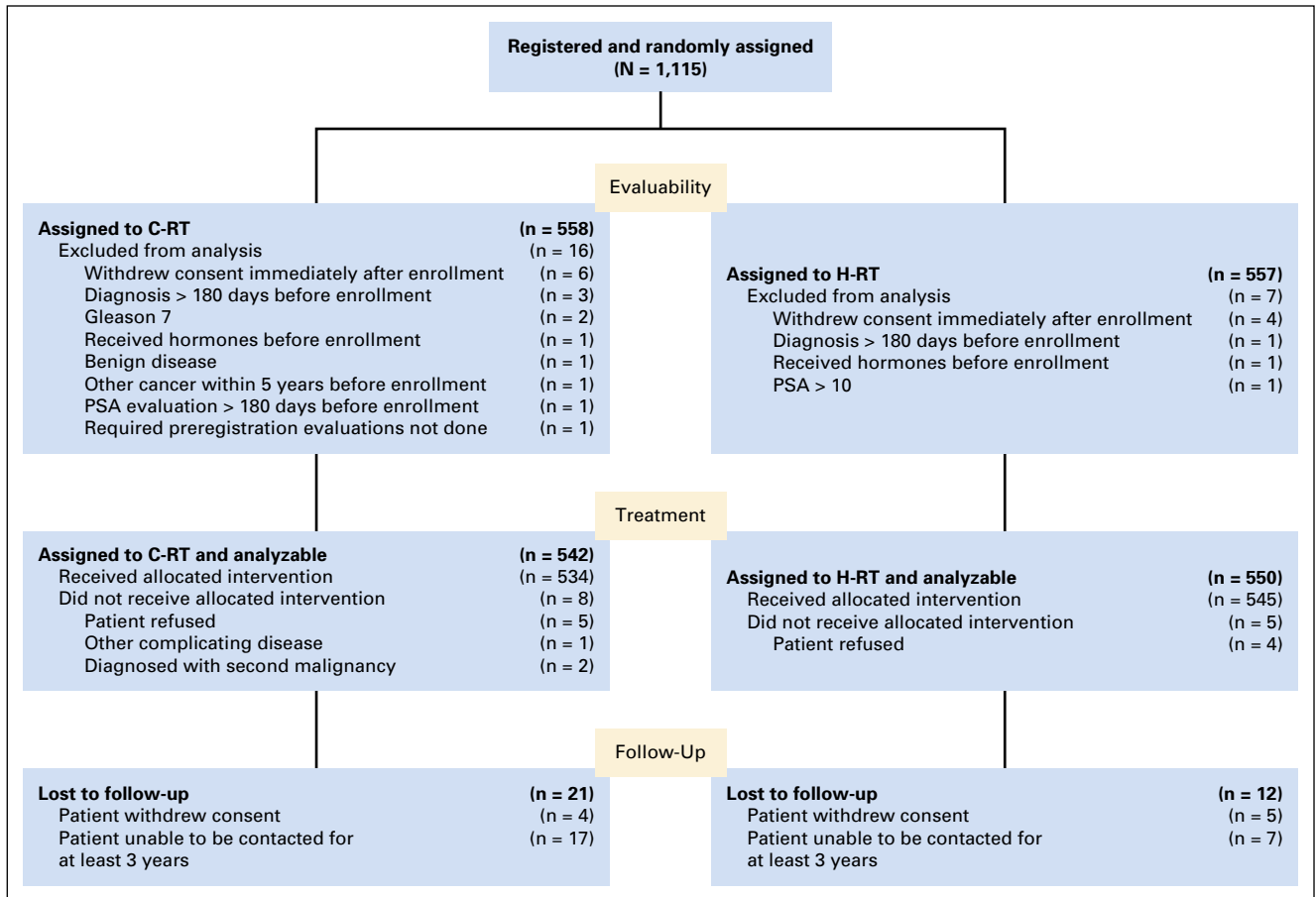
analysis (16 who underwent treatment with C-RT and seven with H-RT). Baseline characteristics of 1,092 analyzable participants with follow-up are listed in Table 1. The median age was 67 years and the median pretreatment PSA was 5.4 ng/mL. Among patients, > 90% had no physical limitations (Zubrod performance score, 0). Baseline characteristics were well balanced, with no substantial between-group differences.

**Radiation Treatment Delivery**

Of 1,092 eligible patients, 1,079 received RT, and 13 patients (eight from the C-RT arm and five from H-RT) received no RT, in most cases because of refusal. Of the 1,079 patients who were treated with RT, 1,030 (98%) were treated according to protocol or with acceptable variation. There were no differences in compliance according to treatment assignment.

**Outcomes**

Study end points and between-group comparisons are listed in Table 2. Median follow-up duration was 5.8 years. At the time of analysis, there were 185 DFS events; 99 in the C-RT arm and 86 in the H-RT arm. The estimated 5-year DFS was 85.3% (95% CI, 81.9 to 88.1) in the C-RT arm and 86.3% (95% CI, 83.1 to 89.0) in the H-RT arm (Fig 2). The HR comparing DFS between the two arms



**Fig 1.** CONSORT diagram. Enrollment, random assignment, and follow-up of the study participants. C-RT, conventional radiotherapy; H-RT, hypofractionated radiotherapy; PSA, prostate-specific antigen.

**Table 1.** Baseline Characteristics of Participants

Characteristic	3D-CRT/IMRT 73.8 Gy (n = 542)	3D-CRT/IMRT 70 Gy (n = 550)	Total (N = 1,092)
Age, years			
≤ 59	87 (16.1)	95 (17.3)	182 (16.7)
60-69	239 (44.1)	251 (45.6)	490 (44.9)
≥ 70	216 (39.9)	204 (37.1)	420 (38.5)
Race			
American Indian/Alaska Native	5 (0.9)	1 (0.2)	6 (0.5)
Asian	7 (1.3)	8 (1.5)	15 (1.4)
Black or African American	91 (16.8)	99 (18.0)	190 (17.4)
Native Hawaiian or Other Pacific Islander	1 (0.2)	1 (0.2)	2 (0.2)
White	430 (79.3)	436 (79.3)	866 (79.3)
Unknown or not reported	8 (1.5)	5 (0.9)	13 (1.2)
Ethnicity			
Hispanic or Latino	20 (3.7)	15 (2.7)	35 (3.2)
Not Hispanic or Latino	488 (90.0)	491 (89.3)	979 (89.7)
Unknown	34 (6.3)	44 (8.0)	78 (7.1)
Zubrod performance status			
0	507 (93.5)	504 (91.6)	1,011 (92.6)
1	35 (6.5)	46 (8.4)	81 (7.4)
PSA, ng/ml			
< 4	106 (19.6)	112 (20.4)	218 (20.0)
4 to < 10	436 (80.4)	438 (79.6)	874 (80.0)
Gleason score			
2-4	2 (0.4)	0 (0.0)	2 (0.2)
5-6	540 (99.6)	550 (100.0)	1,090 (99.8)
T stage			
T1	411 (75.8)	442 (80.4)	853 (78.1)
T2	131 (24.2)	108 (19.6)	239 (21.9)
Radiotherapy modality			
3D-CRT	114 (21.3)	111 (20.4)	225 (20.9)
IMRT	420 (78.7)	434 (79.6)	854 (79.1)

NOTE. Data given as No. (%) unless otherwise noted.  
Abbreviations: 3D-CRT, three-dimensional conformal radiotherapy; IMRT, intensity-modulated radiotherapy; PSA, prostate-specific antigen.

(H-RT/C-RT) is 0.85 (95% CI, 0.64 to 1.14). The prespecified noninferiority criterion was met (null hypothesis  $HR > 1.52$  rejected;  $P < .001$ ).

At the time of analysis, biochemical recurrence was observed in 89 men; 50 in the C-RT arm and 39 in the H-RT arm. The cumulative incidence of biochemical recurrence at 5 years was 8.1% (95% CI, 5.9 to 10.6) in the C-RT arm and 6.3% (95% CI, 4.5 to 8.6) in the H-RT arm as illustrated in Figure 3. The HR (H-RT/C-RT) comparing biochemical recurrence between the two arms was 0.77 (95% CI, 0.51 to 1.17), and the protocol-specified noninferiority criterion was met (H-RT/C-RT  $HR > 1.67$  rejected;  $P < .001$ ).

At the time of analysis, 100 men had died; 51 in the C-RT arm and 49 in the H-RT arm. The estimated 5-year overall survival was 93.2% (95% CI, 90.7 to 95.1) in the C-RT arm and 92.5% (95% CI, 89.9 to 94.5) in the H-RT arm. The HR comparing overall survival between the two arms was 0.95 (95% CI, 0.64 to 1.41). The protocol specified noninferiority criteria was met ( $HR > 1.54$  rejected;  $P = .008$ ). The most frequent causes of death were cardiovascular disease and second cancers.

Additional protocol-specified clinical end points included local progression (seven patients in the C-RT arm, two patients in the H-RT arm), and prostate cancer-specific survival (two deaths in the C-RT arm, one death in the H-RT arm). As a result of the low frequency of these events, additional analyses are not presented.

### Adverse Events

The observed early (within 90 days of RT completion) and late GI or genitourinary (GU) adverse events according to treatment assignment are provided in Table 3. No differences in early GI or GU adverse events were observed. Late grade 2 and 3 GI adverse events were approximately 60% more likely in men who were assigned to treatment with H-RT (RR, 1.55 to 1.59). Similarly, late grade 2 and 3 GU adverse events were more likely in men assigned to treatment with H-RT (RR, 1.31 to 1.56). No differences in more severe events were observed.

## DISCUSSION

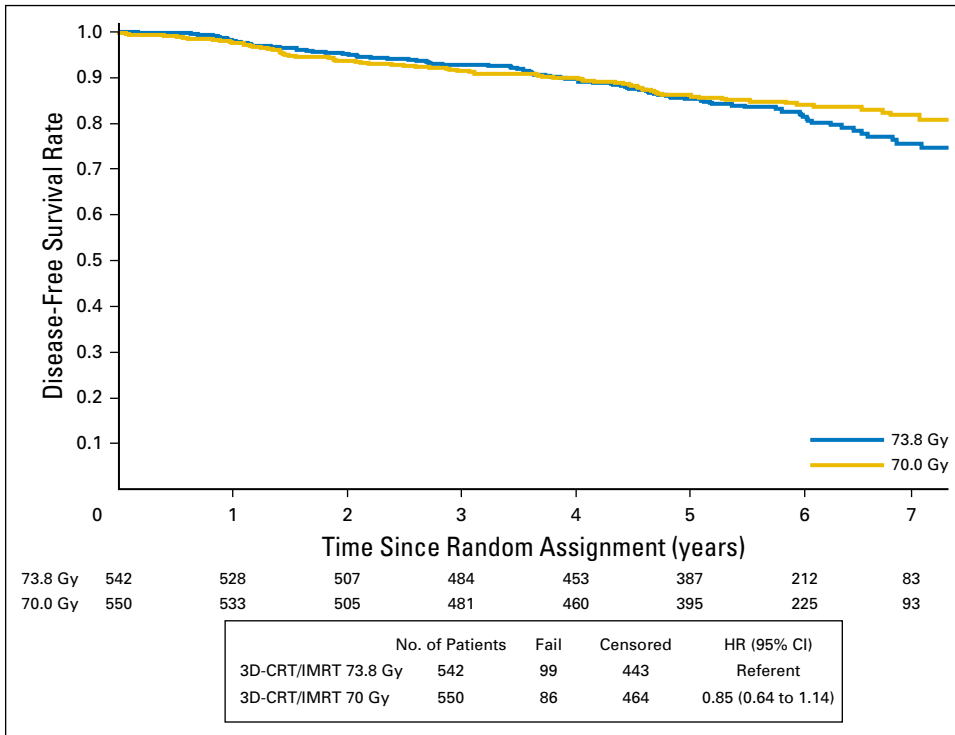
The sensitivity of prostate cancer to the RT dose administered at each treatment session has been the subject of considerable controversy and intense interest since a provocative commentary by Brenner and Hall<sup>19</sup> was published in 1999. Soon afterward, investigators designed RCTs on the basis of the hypothesis that a higher dose per treatment, that is, hypofractionated external RT, would increase the efficacy of RT compared with conventionally delivered external RT. The results reported to date have not confirmed that hypothesis.<sup>8,20</sup> Rather than improving the efficacy of RT, the current trial was designed to demonstrate that a shorter, more convenient treatment schedule could be accomplished without compromising cure or causing additional adverse effects. Our results indicate that the shorter course provides similar efficacy, albeit with an increase in late GI and GU adverse events.

**Table 2.** Patient Outcomes According to Treatment Assignment

End Point	C-RT (n = 542)		H-RT (n = 550)		HR (95% CI)	P H0: H-RT Inferior
	No. of Events	5-Year %*	No. of Events	5-Year %		
Disease-free survival	99	85.3	86	86.3	0.85 (0.64 to 1.14)	< .001
Biochemical recurrence	50	8.1	39	6.3	0.77 (0.51 to 1.17)	< .001
Overall survival	51	93.2	49	92.5	0.95 (0.64 to 1.41)	.008

Abbreviations: C-RT, conventional radiotherapy; H0, null hypothesis; HR, hazard ratio; H-RT, hypofractionated radiotherapy  
\*Kaplan-Meier survival estimates for disease-free survival and overall survival; cumulative incidence estimate for biochemical failure.

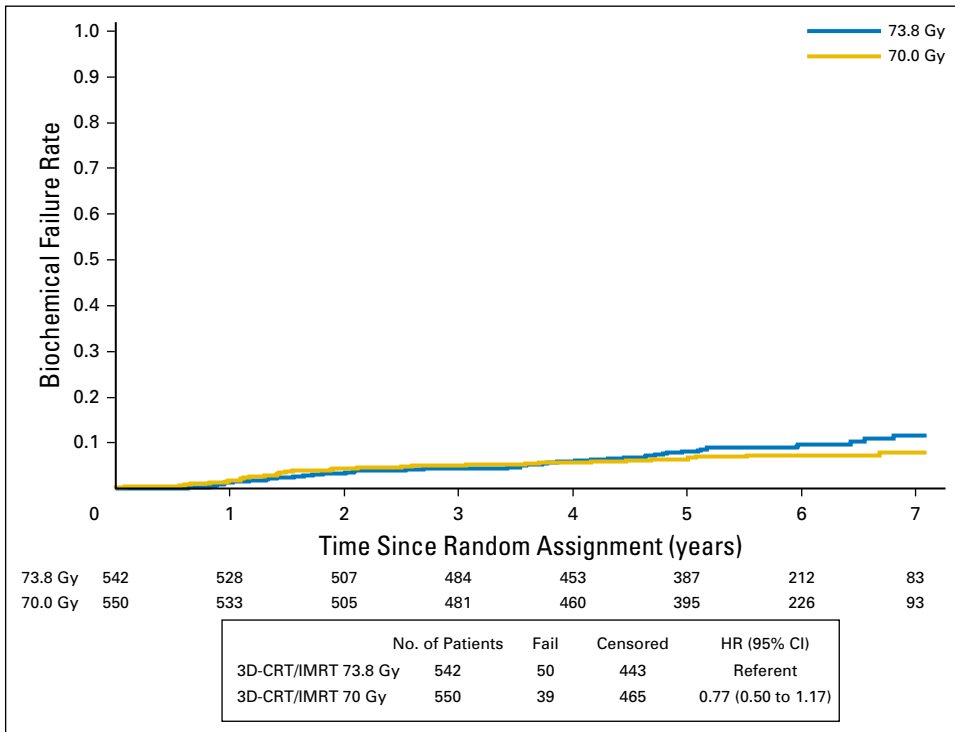
†Test was based on protocol-specified inferiority boundary.



**Fig 2.** Estimates of disease-free survival (DFS) according to treatment assignment. The hazard ratio (HR) comparing DFS between the two arms (hypofractionated radiotherapy/conventional radiotherapy) is 0.85 (95% CI, 0.64 to 1.14). The prespecified noninferiority criterion was met (null hypothesis HR > 1.52 rejected;  $P < .001$ ). 3D-CRT, three-dimensional conformal radiotherapy; IMRT, intensity-modulated radiotherapy.

This trial is unique in that it focused exclusively on patients with low-risk prostate cancer,<sup>21</sup> using RT alone—androgen suppression was not allowed.<sup>22</sup> As such, this trial complements other research<sup>23</sup> yet provides unique findings with generalizability and immediate relevance. It was developed coincident with a debate about the use of early intervention compared with active surveillance for this group

of patients. On the basis of what is known about prostate cancer-specific mortality in low-risk disease,<sup>24</sup> a noninferiority design was a prudent use of resources. A noninferiority trial is typically warranted when an investigational treatment is hypothesized to have efficacy that is comparable to the standard treatment, but with safety, convenience, cost, and/or other advantages.



**Fig 3.** Cumulative incidence of biochemical recurrence according to treatment assignment. The hazard ratio (HR; hypofractionated radiotherapy [H-RT]/conventional radiotherapy [C-RT]) comparing biochemical recurrence between the two arms was 0.77 (95% CI, 0.51 to 1.17), and the protocol-specified noninferiority criterion was met (H-RT/C-RT HR > 1.67 rejected;  $P < .001$ ). 3D-CRT, three-dimensional conformal radiotherapy; IMRT, intensity-modulated radiotherapy.



**Table 3.** Early and Late GI and GU Adverse Events According to Treatment Assignment

Adverse Event Class	3D-CRT/ IMRT 73.8 Gy (n = 534)	3D-CRT/ IMRT 70 Gy (n = 545)	RR (95% CI)*	P
Maximum grade of early GI toxicity				.54†
None reported	327 (61.2)	311 (57.1)		
1	152 (28.5)	176 (32.3)		
2	52 (9.7)	54 (9.9)	1.03 (0.73 to 1.46)	.85
3	3 (0.6)	3 (0.6)	1.31 (0.29 to 5.81)	.72
4	0 (0.0)	1 (0.2)	—	—
Maximum grade of early GU toxicity				.83†
None reported	204 (38.2)	206 (37.8)		
1	185 (34.6)	192 (35.2)		
2	132 (24.7)	129 (23.7)	0.99 (0.82 to 1.21)	.95
3	13 (2.4)	18 (3.3)	1.36 (0.67 to 2.74)	.39
4	0 (0.0)	0 (0.0)	—	—
Maximum grade of late GI toxicity				.002†
None reported	350 (65.7)	300 (55.4)		
1	108 (20.3)	121 (22.3)		
2	61 (11.4)	99 (18.3)	1.59 (1.22 to 2.06)	.005
3	13 (2.4)	22 (4.1)	1.55 (0.80 to 2.99)	.19
4	1 (0.2)	0 (0.0)	—	—
Maximum grade of late GU toxicity				.06†
None reported	255 (47.8)	227 (41.9)		
1	157 (29.5)	154 (28.4)		
2	109 (20.5)	142 (26.2)	1.31 (1.07 to 1.61)	.009
3	11 (2.1)	19 (3.5)	1.56 (0.76 to 3.18)	.22
4	1 (0.2)	0 (0.0)	—	—

NOTE. Data are given as No. (%) unless otherwise noted.

Abbreviations: 3D-CRT, three-dimensional conformal radiotherapy; GU, genitourinary; IMRT, intensity-modulated radiotherapy; RR, relative risk.

\*RR, 95% CI, and P for comparison by treatment group of  $\geq$  grade 2 versus  $<$  grade 2 and  $\geq$  grade 3 versus  $<$  grade 3.

†Test of difference in overall frequency distribution of grade by treatment group.

These findings have important implications for men with low-risk prostate cancer who are considered for external beam RT. If disease control is similar, reducing the number of treatments from 41 to 28 and reducing the duration of therapy by 2.5 weeks (a nearly one-third reduction) provides greater patient convenience and reduced cost. The observed increase in late GI and GU adverse events in patients assigned to treatment with H-RT, however, suggests that increased convenience leads to more treatment-related toxicity. Previous randomized trials that used conventional fractionation have demonstrated that dose escalation decreases biochemical recurrence, with an increase in GI toxicity of a magnitude similar to that observed in this study.<sup>25,26</sup> Despite the increase in toxicity, dose escalation has become the standard of care. It remains to be seen whether the specialty will accept an increase in toxicity without an increase in efficacy. Several patient-reported outcomes, including health-related quality of life, anxiety, and depression, were collected as a component of this study but have not been analyzed to date. It will be of great interest to determine whether patients themselves report differences according to assigned treatment.

The increased late toxicity after treatment with H-RT in this study is somewhat surprising as most of the RCTs have not

observed excess GI and GU toxicity with hypofractionation,<sup>7,23</sup> although the power of these studies to detect a small difference is limited. Prior work (RTOG 9406) has suggested that an increase from 1.8 Gy to 2 Gy may increase toxicity,<sup>27</sup> and we intend to perform exploratory analyses in the future to examine whether dose-volume relationships exist when the fraction size is further increased to 2.5 Gy. We also intend to examine whether the use of IMRT has any effect on late toxicity compared with 3D-CRT. The only study that reported excess toxicity with hypofractionation was the Pollack trial, and this effect was only observed for GU toxicity in men with preexisting urinary dysfunction. We did collect baseline information on urinary function, and we intend to complete an exploratory analysis in the near future.

Some design elements of this trial may be criticized. First, although the noninferiority margin was prespecified, some may view the margin (7.5% absolute difference or HR  $<$  1.52) as too great. The observed HR of 0.85 (95% CI, 0.64 to 1.14) for DFS and 0.77 (95% CI, 0.51 to 1.17) for biochemical recurrence favors the hypofractionated regimen and should mitigate concerns that it is actually worse than the conventional regimen. Second, some may contend that the prescription dose in the conventional arm was too low, but this dose was specified such that  $>$  98% of the prostate received  $\geq$  73.8 Gy. Because the protocol allowed  $\leq$  7% inhomogeneity, portions of the prostate received doses  $>$  76 Gy. A recent analysis of  $>$  12,000 men with low-risk prostate cancer found no evidence that doses  $>$  75.6 Gy improve overall survival.<sup>28</sup> Perhaps the most important criticism is that many of these men with low-risk prostate may not need any treatment at all. Active surveillance is an appropriate initial strategy for men with low-risk disease and has increased in use during the last 5 years<sup>29</sup>; however, a significant proportion of men with low-risk disease still opt for definitive treatment even today, and these results should inform those who elect external beam RT.<sup>29</sup>

This trial includes men with low-risk disease only; therefore, these results should not be extrapolated to men with intermediate- or high-risk disease. It is important to remember that the PTV included the prostate only; the seminal vesicles and pelvic lymph nodes were not irradiated. Two other noninferiority trials that have completed accrual include men with intermediate- and high-risk disease treating larger volumes, and the results are expected soon.<sup>20</sup> It is also important to note that all participants had low-risk disease and were allocated to immediate intervention. It may not be appropriate to extend these results to men who progress beyond low-risk disease after a period of active surveillance, as evidence is lacking in this context.

In conclusion, the results of this trial demonstrate that in men with low-risk prostate cancer, the efficacy of 70 Gy delivered in 28 fractions over 5.5 weeks is not inferior to 73.8 Gy delivered in 41 fractions over 8.25 weeks, although an increase in late grade 2 and 3 GI and GU adverse events was observed.

#### AUTHORS' DISCLOSURES OF POTENTIAL CONFLICTS OF INTEREST

Disclosures provided by the authors are available with this article at [www.jco.org](http://www.jco.org).

## AUTHOR CONTRIBUTIONS

**Conception and design:** W. Robert Lee, James J. Dignam, Mahul B. Amin, Deborah W. Bruner, Daniel Low, Jeff M. Michalski, Thomas M. Pisansky, Howard M. Sandler

**Provision of study materials or patients:** Gregory P. Swanson, David P. D'Souza, Jeff M. Michalski, Samantha A. Seaward, Thomas M. Pisansky, Yuhchayou Chen, Bridget F. Koontz

**Collection and assembly of data:** W. Robert Lee, James J. Dignam, Gregory P. Swanson, Amit B. Shah, David P. D'Souza, Ian S. Dayes, Samantha A. Seaward, Paul L. Nguyen, Sergio L. Faria, Yuhchayou Chen, Rebecca Paulus, Howard M. Sandler

**Data analysis and interpretation:** W. Robert Lee, James J. Dignam, Deborah W. Bruner, Gregory P. Swanson, Ian S. Dayes, William A. Hall, Paul L. Nguyen, Bridget F. Koontz, Rebecca Paulus, Howard M. Sandler

**Manuscript writing:** All authors

**Final approval of manuscript:** All authors

## REFERENCES

- Swisher-McClure S, Mitra N, Woo K, et al: Increasing use of dose-escalated external beam radiation therapy for men with nonmetastatic prostate cancer. *Int J Radiat Oncol Biol Phys* 89:103-112, 2014
- Fowler JF, Toma-Dasu I, Dasu A: Is the  $\alpha/\beta$  ratio for prostate tumours really low and does it vary with the level of risk at diagnosis? *Anticancer Res* 33:1009-1011, 2013
- Kupelian PA, Willoughby TR, Reddy CA, et al: Hypofractionated intensity-modulated radiotherapy (70 Gy at 2.5 Gy per fraction) for localized prostate cancer: Cleveland Clinic experience. *Int J Radiat Oncol Biol Phys* 68:1424-1430, 2007
- Coote JH, Wylie JP, Cowan RA, et al: Hypofractionated intensity-modulated radiotherapy for carcinoma of the prostate: Analysis of toxicity. *Int J Radiat Oncol Biol Phys* 74:1121-1127, 2009
- Ritter M, Forman J, Kupelian P, et al: Hypofractionation for prostate cancer. *Cancer J* 15:1-6, 2009
- Aluwini S, Pos F, Schimmel E, et al: Hypofractionated versus conventionally fractionated radiotherapy for patients with prostate cancer (HYPRO): Acute toxicity results from a randomised non-inferiority phase 3 trial. *Lancet Oncol* 16:274-283, 2015
- Hoffman KE, Voong KR, Pugh TJ, et al: Risk of late toxicity in men receiving dose-escalated hypofractionated intensity modulated prostate radiation therapy: Results from a randomized trial. *Int J Radiat Oncol Biol Phys* 88:1074-1084, 2014
- Pollack A, Walker G, Horwitz EM, et al: Randomized trial of hypofractionated external-beam radiotherapy for prostate cancer. *J Clin Oncol* 31:3860-3868, 2013
- Arcangeli S, Strigari L, Gomellini S, et al: Updated results and patterns of failure in a randomized hypofractionation trial for high-risk prostate cancer. *Int J Radiat Oncol Biol Phys* 84:1172-1178, 2012
- Whelan TJ, Pignol JP, Levine MN, et al: Long-term results of hypofractionated radiation therapy for breast cancer. *N Engl J Med* 362:513-520, 2010
- Edge S, Byrd DR, Compton CC, et al (eds): *Cancer Staging Manual* (ed 6). Chicago, IL, American Joint Committee on Cancer, 2002
- Roach M III, Hanks G, Thames H Jr, et al: Defining biochemical failure following radiotherapy with or without hormonal therapy in men with clinically localized prostate cancer: Recommendations of the RTOG-ASTRO Phoenix Consensus Conference. *Int J Radiat Oncol Biol Phys* 65:965-974, 2006
- Lan KK, DeMets DL: Changing frequency of interim analysis in sequential monitoring. *Biometrics* 45:1017-1020, 1989
- Fleming TR, Harrington DP, O'Brien PC: Designs for group sequential tests. *Control Clin Trials* 5:348-361, 1984
- Kaplan EL, Meier P: Nonparametric-estimation from incomplete observations. *J Am Stat Assoc* 53:457-481, 1958
- Korn EL, Dorey FJ: Applications of crude incidence curves. *Stat Med* 11:813-829, 1992
- Mantel N: Evaluation of survival data and two new rank order statistics arising in its consideration. *Cancer Chemother Rep* 50:163-170, 1966
- Prentice RL, Kalbfleisch JD, Peterson AV Jr, et al: The analysis of failure times in the presence of competing risks. *Biometrics* 34:541-554, 1978
- Brenner DJ, Hall EJ: Fractionation and protraction for radiotherapy of prostate carcinoma. *Int J Radiat Oncol Biol Phys* 43:1095-1101, 1999
- Lee WR: Prostate cancer and the hypofractionation hypothesis. *J Clin Oncol* 31:3849-3851, 2013
- Mohler JL, Kantoff PW, Armstrong AJ, et al: Prostate cancer, version 2.2014. *J Natl Compr Canc Netw* 12:686-718, 2014
- Jones CU, Hunt D, McGowan DG, et al: Radiotherapy and short-term androgen deprivation for localized prostate cancer. *N Engl J Med* 365:107-118, 2011
- Dearnaley D, Syndikus I, Sumo G, et al: Conventional versus hypofractionated high-dose intensity-modulated radiotherapy for prostate cancer: Preliminary safety results from the CHHIP randomised controlled trial. *Lancet Oncol* 13:43-54, 2012
- Wilt TJ, Brawer MK, Jones KM, et al: Radical prostatectomy versus observation for localized prostate cancer. *N Engl J Med* 367:203-213, 2012
- Kuban DA, Tucker SL, Dong L, et al: Long-term results of the M. D. Anderson randomized dose-escalation trial for prostate cancer. *Int J Radiat Oncol Biol Phys* 70:67-74, 2008
- Dearnaley DP, Jovic G, Syndikus I, et al: Escalated-dose versus control-dose conformal radiotherapy for prostate cancer: Long-term results from the MRC RT01 randomised controlled trial. *Lancet Oncol* 15:464-473, 2014
- Michalski JM, Bae K, Roach M, et al: Long-term toxicity following 3D conformal radiation therapy for prostate cancer from the RTOG 9406 phase I/II dose escalation study. *Int J Radiat Oncol Biol Phys* 76:14-22, 2010
- Kalbasi A, Li J, Berman A, et al: Dose-escalated irradiation and overall survival in men with nonmetastatic prostate cancer. *JAMA Oncol* 1:897-906, 2015
- Cooperberg MR, Carroll PR: Trends in management for patients with localized prostate cancer, 1990-2013. *JAMA* 314:80-82, 2015

## Affiliations

W. Robert Lee and Bridget F. Koontz, Duke University Medical Center, Durham, NC; James J. Dignam, University of Chicago, Chicago, IL; Mahul B. Amin and Howard M. Sandler, Cedars-Sinai Medical Center; Daniel Low, University of California, Los Angeles, Los Angeles; Samantha A. Seaward, Kaiser Permanente Northern California, Santa Clara, CA; Deborah W. Bruner, Emory University, Atlanta, GA; Gregory P. Swanson, Baylor Scott & White Healthcare Temple Clinic, Temple, TX; Amit B. Shah, York Cancer Center, York; James J. Dignam and Rebecca Paulus, NRG Oncology Statistics and Data Management Center, Philadelphia, PA; David P. D'Souza, London Regional Cancer Program, London, Ontario; Ian S. Dayes, McMaster University, Hamilton, Ontario; Sergio L. Faria, McGill University Health Center, Montreal, Quebec, Canada; Jeff M. Michalski, Washington University School of Medicine, St Louis, MO; William A. Hall, Medical College of Wisconsin, Milwaukee, WI; Paul L. Nguyen, Dana-Farber Cancer Institute and Brigham and Women's Hospital, Boston, MA; Thomas M. Pisansky, Mayo Clinic, Rochester, MN; and Yuhchayou Chen, University of Rochester, Rochester, NY.



## GLOSSARY TERMS

**hypofractionation:** fractionation scheme for delivery of ionizing radiation in which the dose per fraction is  $> 2$  Gy or radiation treatment in which the total dose of radiation is divided into large doses and treatments are given less than once a day. Also called hypofractionated radiation therapy.

**intensity-modulated radiation therapy:** radiation treatment using beams with nonuniform fluence profiles that shape the dose distribution in the target volume and adjacent normal structures. Beam modulation is typically achieved via multileaf collimators or custom-milled compensators to achieve the appropriate fluence profiles calculated by inverse optimization algorithms. The radiation beam is divided into beamlets of varying intensity such that the sum from multiple beams via inverse planning results in improved tumor targeting and normal tissue sparing. A technique of

radiation therapy delivery in which the intensity of each beamlet of radiation coming from a specific angle can be adjusted to provide a desired dose distribution when the doses delivered from all beamlets are added from a single angle and from all dose delivery angles. An advanced type of high-precision radiation therapy, which aims to improve the coverage of the radiation therapy target and/or minimize radiation dose to surrounding normal tissue.

**prostate-specific antigen (PSA):** a protein produced by cells of the prostate gland. The blood level of PSA is used as a tumor marker for men who may be suspected of having prostate cancer. Most physicians consider 0 to 4.0 ng/mL to be the normal range. Levels of 4 to 10 ng/mL and 10 to 20 ng/mL are considered slightly and moderately elevated, respectively. PSA levels have to be complemented with other tests to make a firm diagnosis of prostate cancer.

## Network With Colleagues on ASCOconnection.org

Use ASCO's professional networking site to:

- Interact with leaders in the field
- Participate in Tumor Boards
- Collaborate on projects and issues
- Share opinions, post news, and ask questions
- Start or join a Working Group

Open to ASCO members and guests. Visit [ASCOconnection.org](http://ASCOconnection.org) today!



**ASCO**<sup>®</sup>  
American Society of Clinical Oncology

**AUTHORS' DISCLOSURES OF POTENTIAL CONFLICTS OF INTEREST**

**Randomized Phase III Noninferiority Study Comparing Two Radiotherapy Fractionation Schedules in Patients With Low-Risk Prostate Cancer**

The following represents disclosure information provided by authors of this manuscript. All relationships are considered compensated. Relationships are self-held unless noted. I = Immediate Family Member, Inst = My Institution. Relationships may not relate to the subject matter of this manuscript. For more information about ASCO's conflict of interest policy, please refer to [www.asco.org/rwc](http://www.asco.org/rwc) or [jco.ascopubs.org/site/ifc](http://jco.ascopubs.org/site/ifc).

**W. Robert Lee**

**Honoraria:** Ferring

**Patents, Royalties, Other Intellectual Property:** UpToDate editor

**James J. Dignam**

**Stock or Other Ownership:** Geron Corporation, Asterias Biotherapeutics

**Consulting or Advisory Role:** Merck

**Mahul B. Amin**

**Honoraria:** Menarini

**Consulting or Advisory Role:** Bristol-Myers Squibb

**Speakers' Bureau:** Menarini

**Travel, Accommodations, Expenses:** Menarini, Bristol-Myers Squibb

**Deborah W. Bruner**

No relationship to disclose

**Daniel Low**

**Employment:** University of California, Los Angeles

**Consulting or Advisory Role:** ViewRay

**Research Funding:** Varian Medical Systems, Siemens, Accuray

**Travel, Accommodations, Expenses:** Varian Medical Systems, ViewRay, Accuray, Siemens

**Other Relationship:** Health care lawyer (I)

**Gregory P. Swanson**

No relationship to disclose

**Amit B. Shah**

No relationship to disclose

**David P. D'Souza**

No relationship to disclose

**Jeff M. Michalski**

**Travel, Accommodations, Expenses:** Varian Medical Systems, Siemens, ViewRay, General Electric

**Ian S. Dayes**

**Honoraria:** Bayer AG, Janssen Pharmaceuticals

**Research Funding:** Sanofi (Inst)

**Samantha A. Seaward**

No relationship to disclose

**William A. Hall**

No relationship to disclose

**Paul L. Nguyen**

**Consulting or Advisory Role:** Medivation, GenomeDx, Ferring, Nanobiotix

**Patents, Royalties, Other Intellectual Property:** Patent on volatile diagnostics of infections (I)

**Thomas M. Pisansky**

No relationship to disclose

**Sergio L. Faria**

No relationship to disclose

**Yuhchayau Chen**

No relationship to disclose

**Bridget F. Koontz**

**Consulting or Advisory Role:** GenomeDx, Laguna Pharmaceutical (I)

**Research Funding:** Janssen Pharmaceuticals

**Patents, Royalties, Other Intellectual Property:** UpToDate

**Rebecca Paulus**

No relationship to disclose

**Howard M. Sandler**

**Honoraria:** Varian Medical Systems

**Consulting or Advisory Role:** Medivation, Astellas Pharma, Janssen Pharmaceuticals, Eviti, Blue Earth, Sanofi, Ferring, Clovis Oncology

**Other Relationship:** Caribou Publishing