

UCLA

UCLA Previously Published Works

Title

Rheumatoid arthritis disease activity and adverse events in patients receiving tofacitinib or tumor necrosis factor inhibitors: a post hoc analysis of ORAL Surveillance.

Permalink

<https://escholarship.org/uc/item/45c4d87g>

Authors

Karpouzas, George

Szekanecz, Zoltán

Baecklund, Eva

et al.

Publication Date

2023

DOI


10.1177/1759720X231201047

Copyright Information

This work is made available under the terms of a Creative Commons Attribution-NonCommercial License, available at <https://creativecommons.org/licenses/by-nc/4.0/>

Peer reviewed

Rheumatoid arthritis disease activity and adverse events in patients receiving tofacitinib or tumor necrosis factor inhibitors: a *post hoc* analysis of ORAL Surveillance

George A. Karpouzas, Zoltán Szekanecz, Eva Baecklund, Ted R. Mikuls, Deepak L. Bhatt, Cunshan Wang, Gosford A. Sawyerr, Yan Chen, Sujatha Menon, Carol A. Connell, Steven R. Ytterberg and Mahta Mortezaei 

Abstract

Background: In patients with rheumatoid arthritis (RA), persistent inflammation and increasing disease activity are associated with increased risk of adverse events (AEs).

Objectives: To assess relationships between RA disease activity and AEs of interest in patients treated with tofacitinib or tumor necrosis factor inhibitors (TNFi).

Design: This was a *post hoc* analysis of a long-term, postauthorization safety endpoint trial of tofacitinib *versus* TNFi.

Methods: In ORAL Surveillance, 4362 patients aged ≥ 50 years with active RA despite methotrexate, and ≥ 1 additional cardiovascular (CV) risk factor, were randomized 1:1:1 to tofacitinib 5 or 10 mg twice daily or TNFi for up to 72 months. *Post hoc* time-dependent multivariable Cox analysis evaluated the relationships between disease activity [Clinical Disease Activity Index (CDAI)], inflammation [C-reactive protein (CRP)], and AEs of interest. The AEs included major adverse CV events (MACE), malignancies excluding nonmelanoma skin cancer (NMSC), venous thromboembolism (VTE), serious infections, herpes zoster (HZ), nonserious infections excluding HZ (NSI), and death.

Results: Across treatments, risk for NSI was higher when patients had CDAI-defined active disease *versus* remission; MACE and VTE risks trended higher, but did not reach significance. Hazard ratios for MACE, malignancies excluding NMSC, VTE, infections, and death rose by 2–9% for each 5-mg/L increment in serum CRP. The interaction terms evaluating the impact of treatment assignment on the relationship between disease activity and AEs were all $p > 0.05$.

Conclusion: In ORAL Surveillance, higher NSI risk was observed in the presence of active RA *versus* remission. The risk of MACE and VTE directionally increased in active disease *versus* remission, although statistical power was limited due to small event numbers in these categories. The relationship between active disease and AEs was not impacted by treatment with tofacitinib *versus* TNFi.

Registration: NCT02092467.

Ther Adv Musculoskelet Dis

2023, Vol. 15: 1–14

DOI: 10.1177/
1759720X231201047

© The Author(s), 2023.
Article reuse guidelines:
[sagepub.com/journals-](https://sagepub.com/journals-permissions)
permissions

Correspondence to:
Mahta Mortezaei
Inflammation and
Immunology, Pfizer Inc, 66
Hudson Boulevard, New
York, NY 10001, USA
Mahta.Mortezaei@pfizer.com

George A. Karpouzas
Division of Rheumatology,
Harbor-UCLA Medical
Center, and the Lundquist
Institute, Torrance, CA,
USA

Zoltán Szekanecz
Department of
Rheumatology, Faculty
of Medicine, University
of Debrecen, Debrecen,
Hungary

Eva Baecklund
Department of Medical
Sciences, Uppsala
University, Uppsala,
Sweden

Ted R. Mikuls
Division of Rheumatology,
University of Nebraska
Medical Center and VA
Nebraska-Western Iowa
Health Care System,
Omaha, NE, USA

Deepak L. Bhatt
Mount Sinai Heart, Icahn
School of Medicine at
Mount Sinai Health
System, New York, NY,
USA

Cunshan Wang
Sujatha Menon
Carol A. Connell
Inflammation and
Immunology, Pfizer Inc,
Groton, CT, USA

Gosford A. Sawyerr
Inflammation and
Immunology, Pfizer Inc,
New York, NY, USA

Yan Chen
Inflammation and
Immunology, Pfizer Inc,
Collegeville, PA, USA

Steven R. Ytterberg
Division of Rheumatology,
Mayo Clinic, Rochester,
MN, USA

Plain language summary

The link between disease activity and adverse medical events in people with rheumatoid arthritis taking tofacitinib or tumor necrosis factor inhibitors.

Why was the study done?

- People with rheumatoid arthritis (RA) who have uncontrolled symptoms (high disease activity) have a higher chance of having adverse medical events (medical problems that occur during treatment with a medication) than people who have mild symptoms (low disease activity).
- We looked at the link between levels of disease activity and the risk of having adverse medical events in people with RA who took tofacitinib or a tumor necrosis factor inhibitor (TNFi) medication.

What did the researchers do?

- We used the results of ORAL Surveillance, a long-term safety trial in people with RA.
 - In this study, people with RA were 50 years or older and at high risk of a major cardiovascular event such as heart attack or stroke.
- For up to 6 years, people took tofacitinib 5 or 10mg tablets two times a day or TNFi injections.
- We used statistical tests to examine the link between different levels of RA disease activity or inflammation and different adverse medical events, such as:
 - major cardiovascular events (such as heart attack, stroke, or death due to heart failure)
 - cancers
 - blood clots
 - infections
 - deaths.

What did the researchers find?

- In people who took tofacitinib or TNFi:
 - People with active disease (those with RA symptoms) had a higher risk of infections that did not lead to hospitalization (nonserious infections) than people in remission (those with very mild symptoms or no symptoms at all).
 - People with active disease also had a slightly higher risk of major cardiovascular events and blood clots than those in remission.
 - Higher levels of inflammation led to increased risk of major cardiovascular events, cancers, blood clots, infections, and deaths.

What do the findings mean?

- Active RA disease leads to higher risk of adverse medical events.
- The medication used (tofacitinib or TNFi) did not affect the link between levels of RA disease activity and adverse medical events.
- This study was limited by the low number of adverse medical events recorded.

Keywords: autoinflammatory conditions, DMARDs, inflammation, outcome measures, rheumatoid arthritis

Received: 12 May 2023; revised manuscript accepted: 25 August 2023.

Introduction

Rheumatoid arthritis (RA) is a chronic autoimmune disorder characterized by synovial inflammation and the potential for joint destruction.¹ While RA disease activity is primarily measured based on the extent of joint involvement and patient-reported outcomes, RA-related inflammation is systemic. Continued inflammation and increasing disease activity are associated with increased risk of comorbidities and adverse events (AEs),^{1,2} including major adverse cardiovascular (CV) events (MACE),^{3–10} venous thromboembolism (VTE),¹¹ malignancies,^{12–15} and both serious and nonserious infections (NSIs).^{16–18}

Recognizing the potential hazards associated with uncontrolled inflammation on both joints and extra-articular tissues, the American College of Rheumatology (ACR) and the European Alliance of Associations for Rheumatology (EULAR) have incorporated treat-to-target recommendations into their treatment guidelines.^{19,20} These state that either low disease activity (LDA)¹⁹ or clinical remission should be the primary target for the treatment of RA^{20,21}; LDA may be more realistic among patients with long-standing disease.²¹ The availability of multiple advanced therapies with different mechanisms of action increasingly enables attainment of these therapeutic goals.²² This may in turn mitigate the risk of AEs caused by higher disease activity. For instance, in an integrated *post hoc* safety analysis of the SELECT phase III RA clinical program of upadacitinib, patients who received upadacitinib 15 mg and experienced MACE or VTE showed lower improvement in their disease activity *versus* patients who did not have an event.²³

ORAL Surveillance (NCT02092467) was a large, long-term, clinical safety endpoint-driven, post-authorization trial of tofacitinib *versus* tumor necrosis factor inhibitors (TNFi) in a CV risk-enriched patient population with coprimary endpoints of MACE and malignancies excluding nonmelanoma skin cancer (NMSC).²⁴ The size and duration of this study enabled the evaluation of a broad range of AEs, including those that occur at low incidence and/or long latency, within a single cohort of patients in a prospective, randomized setting. In this CV risk-enriched population, risks of MACE and malignancies were higher with tofacitinib *versus* TNFi and did not meet noninferiority criteria.²⁴

In this *post hoc* analysis of ORAL Surveillance, we sought to characterize the relationship between RA disease activity and AEs of interest, after adjusting for other baseline risk factors. We also evaluated whether tofacitinib or TNFi treatment had any impact on the relationship between disease activity and AE risk.

Methods

Study design and patients

ORAL Surveillance was a randomized, open-label, noninferiority, postauthorization phase 3b/4 safety endpoint-driven study that enrolled patients with active RA despite methotrexate treatment aged ≥ 50 years with ≥ 1 additional CV risk factor. All patients satisfied the 2010 ACR/EULAR Classification Criteria for RA.²⁵

Patients were randomized 1:1:1 to receive oral tofacitinib 5 or 10 mg twice daily (BID), or subcutaneous TNFi [adalimumab 40 mg once every 2 weeks (North America: US, Puerto Rico, and Canada) or etanercept 50 mg once weekly (rest of the world)]. All patients continued to receive background methotrexate, unless modification was clinically indicated.²⁴

The study began enrollment in March 2014 and completed in July 2020; the database was released in December 2020. In February 2019, the tofacitinib 10 mg BID dose was reduced to 5 mg BID after the Data Safety Monitoring Board noted an increased frequency of pulmonary embolism (PE) in patients receiving tofacitinib 10 mg BID *versus* TNFi, and an increase in overall mortality with tofacitinib 10 mg BID *versus* 5 mg BID and TNFi. Data were collected for up to 72 months of follow-up. Patients randomized to the tofacitinib 10 mg BID group whose dose was reduced to 5 mg BID, or who discontinued from the trial drug, were included in the tofacitinib 10 mg BID group.

Endpoints

This *post hoc* analysis evaluated the relationship between RA-related inflammation (time-dependent, measured at baseline and postbaseline) and selected AEs of interest. Clinical Disease Activity Index (CDAI) and C-reactive protein (CRP) were used as measures of RA-related disease

activity and inflammation. CDAI incorporates assessments of tender and swollen joint counts (28 joints assessed), and both patient's and physician's global assessments of disease activity; CRP is routinely assessed as a marker of systemic inflammation in RA.²⁶ A total of 14 AEs were included: adjudicated MACE (along with its components of myocardial infarction and stroke); adjudicated malignancies (three endpoints: malignancies excluding NMSC, NMSC, and lung cancer); adjudicated VTE [three endpoints: all VTE, deep vein thrombosis (DVT), and PE]; serious infection (defined as any event in the Infections and Infestations System Organ Class, marked as serious); herpes zoster (HZ; nonserious and serious); NSI excluding HZ; and adjudicated death (two endpoints: all-cause deaths and deaths due to CV events).

Statistical analysis

Safety endpoints were analyzed using the safety analysis set, which included all randomized patients who received ≥ 1 dose of study treatment. Patients, including those required to switch from tofacitinib 10 mg BID to 5 mg BID in February 2019, were analyzed in their originally randomized group; the data collected after the dose switch were counted in the tofacitinib 10 mg BID group, as described previously.²⁴

Safety events were counted within predefined risk periods and censoring times, per the ORAL Surveillance study protocol and statistical analysis plan.²⁴ For MACE and its components, the risk period was defined as the time from the first dose until the last contact date or the last trial dose plus 60 days, whichever was earliest. For malignancies excluding NMSC and lung cancer, the risk period was the time from the first dose until the last contact date. For all other endpoints (NMSC, VTE, infections, and death), the risk period was the time from the first dose until the last contact date or the last trial dose plus 28 days, whichever was earliest.

For each endpoint indicated above, our model-building approach to assessing relationships between RA-related inflammation and the safety events consisted of the following multiple steps. First, potential baseline risk factors were selected based on clinical knowledge and literature.^{6,27-29} These included patient demographics, medical history, RA disease characteristics, and baseline and prior medications (the full list of covariates

are listed in the Supplemental methods). Second, we performed simple Cox analyses for each baseline risk factor (including treatment arm and a single candidate risk factor), one at a time. Any baseline risk factor with a $p < 0.10$ from the simple Cox models was selected by the model. Third, a multivariable Cox proportional hazard model analysis using backward selection was performed, including treatment arm (always included) and all the variables that had been selected by the model in the second step. The p value cutoff for a risk factor to stay in the multivariable model was 0.10 (i.e. $p < 0.10$). Finally, time-dependent CDAI categories were added to this multivariable model for each AE of interest that had been selected in the third step. CDAI categories were defined as low (> 2.8 and ≤ 10 ; LDA), moderate (> 10 and ≤ 22 ; MDA), or high (> 22 ; HDA) disease activity *versus* remission (≤ 2.8). Time-dependent CDAI categories included all baseline and postbaseline CDAI values recorded for each patient prior to the AE of interest for patients who experienced the AE, or the end of the risk period for patients who did not experience the AE. The counting process method of data input was used, that is, the time was first divided into intervals at cut points where CDAI categories were evaluated; then, the presence or absence of the AE was counted in each interval (event interval or censored interval, respectively) for which the beginning CDAI category was the covariate for that interval.³⁰ This models the entire disease trajectory based on CDAI of the patient during the study. Hazard ratios for LDA, MDA, and HDA *versus* remission and 95% confidence intervals (CIs) were estimated based on this multivariable time-dependent Cox proportional hazard model.³¹ Nominal p values < 0.05 were considered evidence of associations between categorized CDAI and risk of AEs. This analysis was similarly repeated for time-dependent CRP (mg/L) as a continuous covariate, with hazard ratios estimated per increment of 5 mg/L of CRP. Pooling of the AEs across the two tofacitinib and TNFi arms enhanced the precision of the estimates, particularly for less frequently occurring AEs.

Separately, a sensitivity analysis including the interaction between treatment arm and the time-dependent covariate was performed to assess whether the effect of CDAI (or CRP) on the risk of AE was different for tofacitinib *versus* TNFi.

In addition, cumulative disease activity (per year) was calculated using the area under the curve

(AUC) for CDAI from baseline to the time of the AE. Comparisons of the CDAI AUC/year for patients with *versus* without AEs were made using an analysis of variance model with treatment arm, event status, and the interaction between treatment arm and event status as covariates.

Across these analyses, no multiplicity adjustments were applied.

Results

Patients

Overall, 4362 patients were included (tofacitinib 5 mg BID: $N=1455$; tofacitinib 10 mg BID: $N=1456$; TNFi: $N=1451$) with a median follow-up of 4.0 years. Detailed demographics and baseline characteristics have been previously reported²⁴; selected characteristics are shown in Table 1. Across treatment arms, 78.2% of patients were female; median age was 60 years. Mean disease duration at baseline was 10.4 years. By study design, patients were receiving concomitant methotrexate at baseline; 28.4% had previously received another conventional synthetic disease-modifying antirheumatic drug (DMARD) (csDMARD) and 10.4% a biologic DMARD (bDMARD). Furthermore, 57.2% of patients reported corticosteroid use at baseline. Baseline CDAI scores and CRP levels were similar across treatment arms (Table 1).

Patients were assessed for disease activity, as defined by CDAI, at every study visit. Improvements in CDAI were observed in all three treatment arms. Figure 1 graphically depicts the proportions of patients in each disease activity category by visit, for the duration of the study across all treatment arms. CDAI category changes during the study were similar across treatment arms, as shown in Supplemental Figure S1.

The results of the Cox regression analysis showed that, at any given point in time during the study, patients with residual disease activity (CDAI HDA, MDA, or LDA) had an increased risk of certain AEs *versus* patients in remission. This residual disease activity was a risk factor for NSI. For MACE, VTE, serious infection (MDA and LDA only), and CV death (MDA only), patients with active disease trended toward a higher risk of developing these AEs *versus* those in remission, but all p values were >0.05 (Figure 2). No association with CDAI category was observed for

malignancies or HZ (Figure 2; Supplemental Figure S2). Results of additional endpoints, including components of MACE, malignancy subtypes, DVT, and PE, are shown in Supplemental Figure S2.

Additionally, a sensitivity analysis indicated that the relationship between CDAI and AEs was not impacted differentially by treatment arm (all interaction terms had $p > 0.05$; data not shown).

Higher serum CRP was associated with greater risk for most AEs of interest

Results from the Cox regression analysis showed that risks of AEs of interest increased with higher serum CRP, except for HZ (Figure 3). Specifically, risk increased, with each 5 mg/L increment in serum CRP, by 6% (95% CI: 2–9%) for MACE, 4% (2–6%) for malignancies excluding NMSC, 5% (0–10%) for VTE, 9% (7–10%) for serious infections, 2% (1–3%) for NSI, and 9% (4–13%) for CV death (all $p < 0.05$; Figure 3). In contrast, there was a 6% (0–11%) reduction in risk for HZ for each 5-mg/L increment in serum CRP. Results of analyses for additional endpoints, including components of MACE, VTE, and malignancies, are shown in Supplemental Figure S3. The sensitivity analysis again showed that the relationship between CRP and AEs was not impacted differentially by treatment arm (data not shown; all interaction p values > 0.05).

Patients who experienced certain AEs had greater cumulative CDAI disease activity

Comparison of least squares mean AUC/year for CDAI showed that patients who received tofacitinib 5 mg BID and experienced MACE, VTE, serious infections, and NSI had higher cumulative disease activity exposure during the study than patients on the same treatment who did not experience these events (all p values < 0.05 ; Supplemental Table S1). Patients who received tofacitinib 10 mg BID and experienced VTE, serious infections, HZ, and NSI also experienced higher cumulative disease activity than patients on the same treatment who did not experience these events (all p values < 0.05 ; Supplemental Table S1). For patients who received TNFi, those who experienced serious infections and NSI had higher cumulative disease activity per year than patients who did not experience infection events (all p values < 0.05 ; Supplemental Table S1).

Table 1. Baseline patient demographics and characteristics.

Demographic/characteristic	Tofacitinib 5 mg BID (N= 1455)	Tofacitinib 10 mg BID (N= 1456)	TNFi (N= 1451)	Total (N= 4362)
Age, years				
Mean (SD)	60.8 (6.8)	61.4 (7.1)	61.3 (7.5)	61.2 (7.1)
Median [range]	60.0 [50.0–86.0]	61.0 [50.0–85.0]	60.0 [50.0–88.0]	60.0 [50.0–88.0]
Female sex, n (%)	1169 (80.3)	1124 (77.2)	1117 (77.0)	3410 (78.2)
Duration of RA, years				
Mean (SD)	10.4 (8.8)	10.2 (9.0)	10.6 (9.3)	10.4 (9.1)
Median [range]	8.2 [0.30–47.62]	7.6 [0.28–57.08]	8.1 [0.02–51.90]	8.0 [0.02–57.08]
Concomitant medication use at baseline (day 1), n (%)				
Methotrexate	1453 (99.9)	1456 (100.0)	1451 (100.0)	4360 (99.9)
Corticosteroids	836 (57.5)	829 (56.9)	830 (57.2)	2495 (57.2)
Methotrexate dose, mg/week				
Mean (SD)	17.4 (4.4)	17.4 (4.1)	17.3 (4.3)	17.3 (4.3)
[N1, N2]	[21, 1434]	[33, 1423]	[16, 1435]	[70, 4292]
Corticosteroid use, mg/day				
Mean (SD)	6.0 (2.5)	6.1 (2.6)	6.1 (2.4)	6.1 (2.5)
[N1, N2]	[686, 769]	[685, 771]	[678, 773]	[2049, 2313]
Prior medication use, n (%)				
Nonmethotrexate csDMARDs	421 (28.9)	395 (27.1)	424 (29.2)	1240 (28.4)
bDMARDs	164 (11.3)	138 (9.5)	150 (10.3)	452 (10.4)
TNFi	115 (7.9)	110 (7.6)	105 (7.2)	330 (7.6)
Non-TNFi bDMARDs	71 (4.9)	53 (3.6)	62 (4.3)	186 (4.3)
CDAI				
Mean (SD)	39.8 (11.9)	39.9 (12.1)	39.7 (11.9)	39.8 (12.0)
Median [range]	38.3 [6.6–75.2]	37.9 [9.3–74.5]	38.1 [14.5–74.6]	38.2 [6.6–75.2]
[N1, N2]	[45, 1410]	[52, 1404]	[64, 1387]	[161, 4201]
CRP, mg/L				
Mean (SD)	17.3 (20.5)	16.4 (20.3)	16.7 (21.6)	16.8 (20.8)
Median [range]	9.8 [0.0–162]	9.1 [0.0–180]	8.9 [0.0–274]	9.3 [0.0–274]
[N1, N2]	[0, 1455]	[0, 1456]	[3, 1448]	[3, 4359]

bDMARD, biologic DMARD; BID, twice daily; CDAI, Clinical Disease Activity Index; CRP, C-reactive protein; csDMARD, conventional synthetic DMARD; DMARD, disease-modifying antirheumatic drug; n, number of patients meeting criteria; N, number of patients in each treatment arm in the safety population; N1, number of patients with missing values at baseline; N2, number of patients with nonmissing values at baseline; RA, rheumatoid arthritis; SD, standard deviation; TNFi, tumor necrosis factor inhibitor.

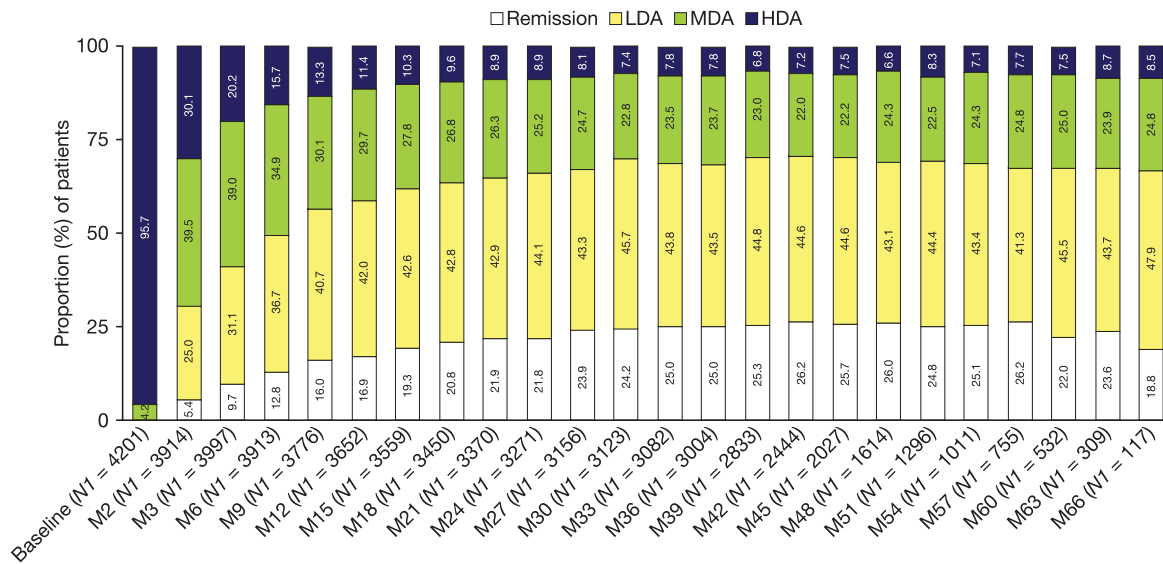


Figure 1. Patients in CDIAI-defined disease activity categories in ORAL Surveillance, by visit (all treatments). Data beyond month 66 were not presented due to decline in patient numbers from that point onward. Percentages were based on patients with available CDIAI values at a given visit. CDIAI, Clinical Disease Activity Index; HDA, high disease activity; LDA, low disease activity; M, month; MDA, moderate disease activity; N1, number of patients with observations at each visit, for calculation of percentages.

Discussion

RA is associated with a range of comorbid conditions such as infections and CV disease.^{1,2} In addition to providing valuable information about the risk profile of tofacitinib *versus* TNFi, ORAL Surveillance also allowed an opportunity to explore risk factors for many AEs of interest in patients with RA who were receiving active treatment. At the time of enrollment, participants in this trial were substantially undertreated by treatment-to-target standards and practice guidelines.²⁰ This was evidenced by the findings that patients in this trial had mean disease duration of 10 years at enrollment and, although they were receiving methotrexate at baseline (by protocol), less than 30% had received other csDMARDs previously, indicating a low rate of combination csDMARD therapy, and approximately 10% had received a prior bDMARD. However, over half of these patients were receiving corticosteroids at the time of enrollment. In spite of this, approximately 96% of patients entered the study with a CDIAI score consistent with HDA. We propose that not only were these patients enriched for AEs of interest due to age and comorbid CV risk factors, but also due to their HDA at enrollment, and their historically undertreated RA.^{4,8,13,15,16,18} Although ORAL Surveillance was a long study, with a mean patient follow-up of 4 years, one limitation of this analysis was that we were not able to assess the cumulative

burden of inflammation with which the patient entered the study because the clinical trial did not allow for retrospective capture of the CDIAI and CRP values for the patients' entire duration of disease, which ranged from <1 month to 57 years.

Focusing on the disease activity measures during the study, we used a Cox regression model with time-dependent CDIAI or CRP to explore relationships between patients' CDIAI score or CRP level and the risk of incurring AEs. The analysis included patient demographics, medical history, RA disease characteristics, and baseline medications. In this high-risk population of patients with RA, residual disease activity was a contributory risk for AEs. For instance, NSI risks were higher among patients with active RA than those in remission, and risk increased with rising CDIAI disease activity. The analysis also suggested that MACE and VTE risks trended higher when patients had active disease *versus* remission, but the *p* values were >0.05, and a similar increase with higher CDIAI activity was not demonstrated. Separately, we found that higher CRP values were associated with a greater risk for MACE, malignancies, VTE, serious infections, NSI, and CV death. It should be noted that at least ~30% of patients had MDA/HDA throughout the duration of study, suggesting that the relationship between disease activity and AE risk may have been observed due to patients not attaining

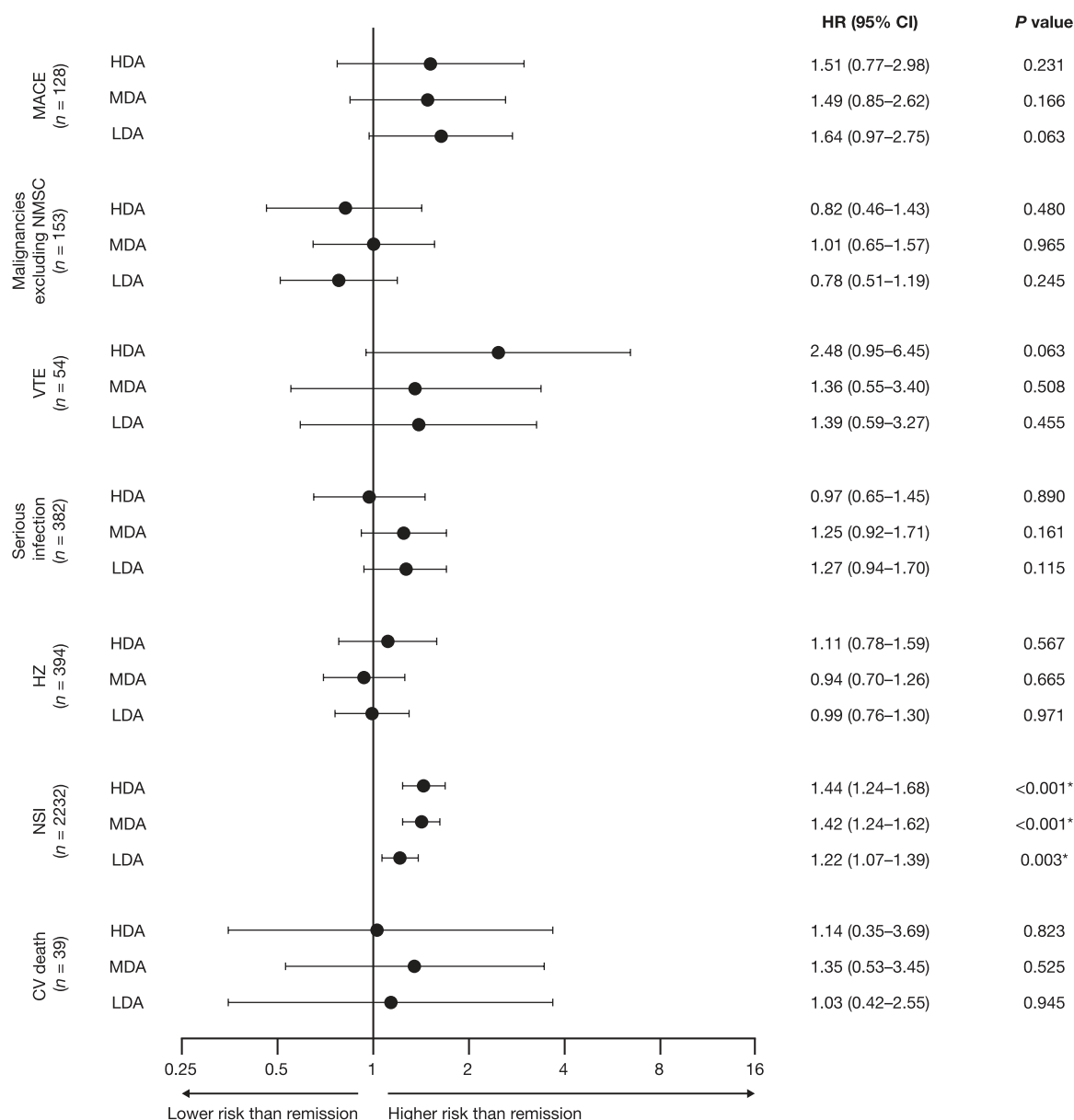


Figure 2. Hazard ratios (95% CIs) for selected AEs of interest: CDAl-defined active RA *versus* remission (time-dependent covariate analysis).

* $p < 0.05$. Hazard ratios (95% CIs) are shown on a logarithmic scale. Patients with missing baseline risk factors and time-dependent CDAl were excluded.

AE, adverse event; CDAl, Clinical Disease Activity Index; CI, confidence interval; CV, cardiovascular; HDA, high disease activity; HR, hazard ratio; HZ, herpes zoster (nonserious and serious); LDA, low disease activity; MACE, major adverse CV event; MDA, moderate disease activity; *n*, number of patients who experienced each AE within risk period with CDAl measurements, pooled across treatment arms; NMSC, nonmelanoma skin cancer; NSI, nonserious infection excluding HZ; RA, rheumatoid arthritis; TNFi, tumor necrosis factor inhibitor; VTE, venous thromboembolism.

the treatment target; this is despite the likelihood of patients exhibiting improvements from baseline in CDAl with tofacitinib or TNFi treatment.³²

In the sensitivity analyses, the lack of interactions between treatment arm and CDAl or CRP suggests that disease activity is a risk factor for the

AEs of interest, independent of treatment with tofacitinib or TNFi. However, the sensitivity analysis was limited by low power, owing to a generally low number of AEs in the tofacitinib and TNFi arms. Nevertheless, postbaseline CRP values may have been differentially impacted by treatment. Moreover, this analysis assumed that

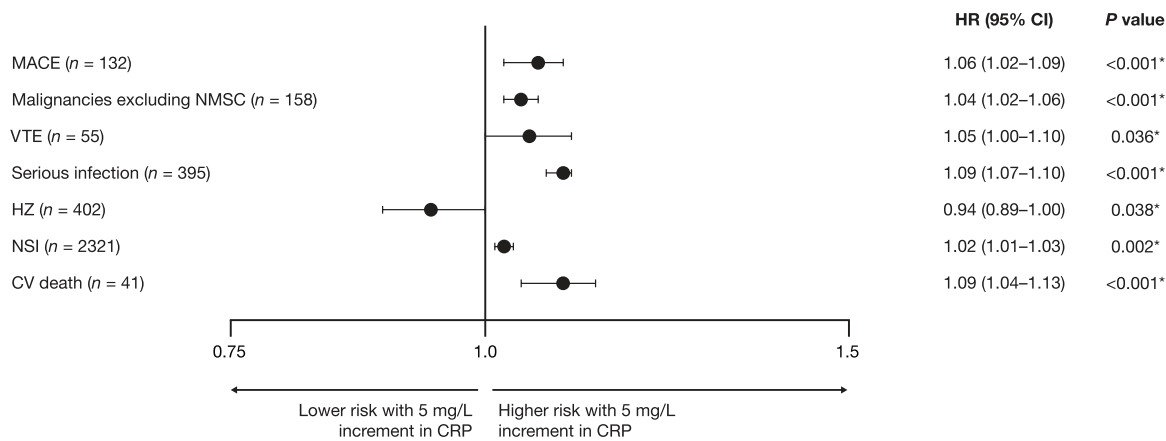


Figure 3. Hazard ratios (95% CIs) for selected AEs of interest: 5 mg/L CRP increment (time-dependent covariate analysis).

* $p < 0.05$. Hazard ratios (95% CIs) are shown on a logarithmic scale. Patients with missing baseline risk factors and continuous CRP were excluded from analysis.

AE, adverse event; CI, confidence interval; CV, cardiovascular; HR, hazard ratio; HZ, herpes zoster (nonserious and serious); MACE, major adverse CV events; *n*, number of patients who experienced each AE within risk period with CRP measurements, pooled across treatment arms; NMSC, nonmelanoma skin cancer; NSI, nonserious infection excluding HZ; VTE, venous thromboembolism.

CRP values were related to RA disease activity, although CRP is a nonspecific measure of inflammation and can also fluctuate due to RA-independent factors such as infection and injury.³³ Finally, the CDAI and CRP values included in this analysis were those collected at prescheduled study visits every 3 months from baseline to the visit before the event, rather than when the patient was seen for the AE (e.g. in the emergency room). It is possible that CRP levels fluctuated due to undiagnosed but developing AEs, and the direction of the relationship between CRP and AEs should thus be interpreted with caution.

One seemingly paradoxical finding in our analysis was that, while higher time-dependent CRP was associated with both serious infections and NSI, the relationship was reversed for HZ. The finding that patients receiving Janus kinase inhibitors, including tofacitinib, are at a greater risk for HZ infection has been seen across multiple datasets.^{34–36} It is plausible that patients who responded best to treatment were also at the highest risk for HZ. However, identifying a mechanistic explanation for this finding requires further studies.

In the AUC/year analysis, we observed that patients receiving tofacitinib 5 mg BID who experienced MACE, VTE, serious infections, or NSI

were exposed to higher cumulative disease activity (CDAI) than patients who received the same treatment and did not experience such an event. Similar results were obtained in patients who received TNFi and experienced serious infections and NSI *versus* patients who did not experience such an event. However, a similar relationship between disease activity and malignancy (excluding NMSC) or CV death was not detected. As with the sensitivity analyses, these analyses were limited by low power, due to the low number of AEs across treatment arms.

Overall, our findings regarding the contribution of inflammation to the risk of AEs in patients with RA are consistent with those of others. Baseline CRP has been highlighted as a predictor of CV death in patients with new onset inflammatory polyarthritis who were followed for approximately 10 years³⁷; similarly, CRP is also an independent predictor of coronary atherosclerotic plaque progression in patients with RA.⁴ Two prior studies showed that the risk of MACE increases with acute flares of RA disease.^{7,8} Importantly, a recent study suggested that the relationship between CDAI and CV risk was the strongest in the first 6 months of therapy and that the association diminished over time³⁸; it is, therefore, possible that the inclusion of all CDAI values over the period of this 5-year study may have attenuated the relationship between disease activity and MACE.

ORAL Surveillance was powered for comparisons between two active therapies, tofacitinib and TNFi, for MACE and malignancies excluding NMSC as primary endpoints; the trial was not powered to assess other endpoints, and it did not include a placebo arm. Our analysis showed a statistical association between active disease by CDAI and NSI, the most frequently occurring AE of special interest in this study. This was the most statistically robust analysis in terms of power. This is consistent with previous findings; a large US cohort study described an association between increasing disease activity and outpatient infection rates among patients with RA.¹⁶ The remaining endpoints in our analysis had low event numbers, and resultant large CIs, potentially explaining some aberrant findings across residual disease activity categories *versus* remission. Nevertheless, even for AEs with small event numbers, like VTE, the relationship between disease activity and events was still directionally aligned with previous studies. For example, it has been shown that inflammation in RA can contribute to increased risk for VTE, including a long-term registry-based study noting a strong association between increasing acute RA disease activity, measured by Disease Activity Score in 28 joints erythrocyte sedimentation rate, and the risk of VTE.¹¹ The majority of PE cases reported in ORAL Surveillance were identified in isolation, without knowledge of when the primary thrombosis (presumed DVT) had occurred, potentially impacting the identification of time-dependent disease activity as it is related to the temporal diagnosis of PE.

In this study, we did not find associations between CDAI and malignancies, but CRP was associated with malignancies, which as previously stated may have been due to the malignancy itself rather than RA activity. Lymphoma has the most frequently reported link between lifetime exposure to inflammation and malignancies in patients with RA in existing literature.^{14,15} Our analysis did not include lymphoma as a standalone endpoint due to insufficient case numbers (four patients receiving tofacitinib 5 mg BID, six patients receiving tofacitinib 10 mg BID, and one patient receiving TNFi).³⁹ Lymphoma was included in the malignancies excluding NMSC outcome.

Our study was limited by its *post hoc* nature. ORAL Surveillance included a CV risk-enriched population of patients with RA (aged ≥ 50 years,

with ≥ 1 additional CV risk factor); extrapolating our results to the general RA patient population should be done with caution. Associations identified by Cox analyses do not necessarily imply causation, and time-dependent covariate analyses may introduce bias in terms of reverse causality. Backward selection, while commonly used in analyzing clinical trial data,⁴⁰ may yield a biased relationship between selected covariates and the outcome; CIs and *p* values may be underestimated.⁴¹ In addition, the power for the interaction analyses (effect modification) was low. Further, the stability of the backward selection may be affected by a small number of events in some instances.⁴⁰ Patient demographics were captured only at baseline; given the long study duration, demographics and thus risk factors (e.g. weight, smoking status, and concomitant medications) may have changed during the study. Due to the conditional nature of the selection method for model building, inference regarding association from the models thus selected is not confirmatory and would warrant further investigation.

Treat-to-target recommendations for the management of RA establish remission as the ideal goal, while LDA may be an acceptable alternative in certain patients.^{19,20} Our results indicate that in patients with RA ≥ 50 years of age with ≥ 1 additional CV risk factor, any residual disease activity can contribute to increased risk of certain AEs, despite treatment with advanced immunomodulatory therapies. The risk imposed by disease activity appears to be similar for patients receiving tofacitinib and TNFi. This may suggest that in patients with comorbidities, such as the ORAL Surveillance population, exposure to even modest levels of inflammation may increase the risk of AEs, in line with recent literature.^{4,11} Clinicians should consider stringent adherence to treat-to-target guidelines in this high-risk patient population to achieve and maintain tight control of disease activity.

Declarations

Ethics approval and consent to participate

ORAL Surveillance was conducted in accordance with the Declaration of Helsinki and Good Clinical Practice Guidelines of the International Council for Harmonisation, and was approved by the relevant Institutional Review Board and/or Independent Ethics Committee of the

investigational centers. All patients provided written, informed consent.

Consent for publication

Not applicable.

Author contributions

George A. Karpouzas: Conceptualization; Formal analysis; Writing – review & editing.

Zoltán Szekanecz: Conceptualization; Formal analysis; Writing – review & editing.

Eva Baecklund: Formal analysis; Writing – review & editing.

Ted R. Mikuls: Formal analysis; Writing – review & editing.

Deepak L. Bhatt: Conceptualization; Formal analysis; Writing – review & editing.

Cunshan Wang: Conceptualization; Formal analysis; Writing – review & editing.

Gosford A. Sawyerr: Conceptualization; Formal analysis; Writing – review & editing.

Yan Chen: Formal analysis; Writing – review & editing.

Sujatha Menon: Conceptualization; Formal analysis; Writing – review & editing.

Carol A. Connell: Conceptualization; Formal analysis; Writing – review & editing.

Steven R. Ytterberg: Conceptualization; Formal analysis; Writing – review & editing.

Mahta Mortezaei: Conceptualization; Formal analysis; Writing – review & editing.

Acknowledgements

The authors would like to thank All-shine Chen, Harry Shi, Jose Rivas, and Joseph Wu from Pfizer Inc for their guidance in the development of this manuscript. Medical writing support, under the direction of the authors, was provided by Karen Thompson, PhD, CMC Connect, a division of IPG Health Medical Communications and was funded by Pfizer, New York, NY, USA, in accordance with Good Publication Practice (GPP) guidelines (*Ann Intern Med* 2022; 175: 1298–1304). Editorial assistance with submission was provided by Eva Dekker, CMC Connect, IPG Health Medical Communications, and was funded by Pfizer, New York, NY, USA. The authors authorized the submission of their manuscript *via* a third party and approved all

statements and declarations, for example, conflicts of interest and funding.

Funding

The authors disclosed receipt of the following financial support for the research, authorship, and/or publication of this article: This study was sponsored by Pfizer. This work was supported by Pfizer.

Competing interests

GAK has received research grants from Pfizer Inc, has acted as a consultant for Janssen and Sanofi-Genzyme-Regeneron, and has participated in speakers' bureau activities for Sanofi-Genzyme-Regeneron. ZS has acted as a consultant for AbbVie, Eli Lilly, Novartis, Pfizer Inc, Roche, and Sanofi, has acted as a paid instructor for AbbVie, Eli Lilly, Gedeon Richter, Novartis, Pfizer Inc, and Roche, and has participated in speakers' bureau activities for AbbVie, Eli Lilly, Novartis, Pfizer Inc, Roche, and Sanofi. EB declares no competing interests. TRM has received research grants from Bristol Myers Squibb and Horizon, has acted as a consultant for Gilead Sciences, Horizon, Sanofi and UCB, and served on the Steering Committee for ORAL Surveillance for Pfizer Inc. DLB served as a member of the Steering Committee for ORAL Surveillance, with funding from Pfizer Inc paid to Brigham and Women's Hospital. DLB has also served as an advisory board member for ANGIOWave, Bayer, Boehringer Ingelheim, Cardax, CellProthera, Cereno Scientific, Elsevier Practice Update Cardiology, High Enroll, Janssen, Level Ex, McKinsey, Medscape Cardiology, Merck, MyoKardia, NirvaMed, Novo Nordisk, PhaseBio, PLx Pharma, Regado Biosciences, and Stasys; has served on the Board of Directors for AngioWave (stock options), Boston VA Research Institute, Bristol Myers Squibb (stock), DRS.LINQ (stock options), High Enroll (stock), Society of Cardiovascular Patient Care, and TOBESOFT; has acted as the Inaugural Chair of the American Heart Association Quality Oversight Committee; has acted as a consultant for Broadview Ventures; has been a member of the Data Monitoring Committees for Acesion Pharma, Assistance Publique-Hôpitaux de Paris, Baim Institute for Clinical Research (formerly Harvard Clinical Research Institute, for the PORTICO trial, funded by St. Jude Medical, now Abbott), Boston Scientific (Chair, PEITHO trial), Cleveland Clinic (including for the ExCEED trial, funded

by Edwards), Contego Medical (Chair, PERFORMANCE 2), Duke Clinical Research Institute, Mayo Clinic, Mount Sinai School of Medicine (for the ENVISAGE trial, funded by Daiichi Sankyo; for the ABILITY-DM trial, funded by Concept Medical), Novartis, Population Health Research Institute, and Rutgers University (for the NIH-funded MINT Trial); has received honoraria from the American College of Cardiology (Senior Associate Editor, Clinical Trials and News, ACC.org; Chair, ACC Accreditation Oversight Committee), Arnold and Porter law firm (work related to Sanofi/Bristol Myers Squibb clopidogrel litigation), Baim Institute for Clinical Research (formerly Harvard Clinical Research Institute; RE-DUAL PCI Clinical Trial Steering Committee funded by Boehringer Ingelheim; AEGIS-II Executive Committee funded by CSL Behring), Belvoir Publications (Editor in Chief, Harvard Heart Letter), Canadian Medical and Surgical Knowledge Translation Research Group (Clinical Trial Steering Committees), Cowen and Company, Duke Clinical Research Institute (Clinical Trial Steering Committees, including for the PRONOUNCE trial, funded by Ferring Pharmaceuticals), HMP Global (Editor in Chief, Journal of Invasive Cardiology), Journal of the American College of Cardiology (Guest Editor; Associate Editor), K2P (Co-Chair, interdisciplinary curriculum), Level Ex, Medtelligence/ReachMD (CME Steering Committees), MJH Life Sciences, Oakstone CME (Course Director, Comprehensive Review of Interventional Cardiology), Piper Sandler, Population Health Research Institute (for the COMPASS Operations Committee, Publications Committee, Steering Committee, and USA national co-leader, funded by Bayer), Slack Publications (Chief Medical Editor, Cardiology Today's Intervention), Society of Cardiovascular Patient Care (Secretary/Treasurer), WebMD (CME Steering Committees), and Wiley (Steering Committee); has acted as Deputy Editor for Clinical Cardiology, Chaired the NCDR-ACTION Registry Steering Committee, and Chaired the VA CART Research and Publications Committee; has been named on a patent for sotagliflozin assigned to Brigham and Women's Hospital, who assigned to Lexicon (neither DLB nor Brigham and Women's Hospital receive any income from this patent); has received research funding from Abbott, Acesion Pharma, Afimmune, Aker BioMarine, Amarin, Amgen, AstraZeneca, Bayer, Beren, Boehringer Ingelheim, Boston Scientific, Bristol

Myers Squibb, Cardax, CellProthera, Cereno Scientific, Chiesi, CinCor, CSL Behring, Eisai, Eli Lilly, Ethicon, Faraday Pharmaceuticals, Ferring Pharmaceuticals, Forest Laboratories, Fractyl, Garmin, HLS Therapeutics, Idorsia, Ironwood, Ischemix, Janssen, Javelin, Lexicon, Medtronic, Merck, Moderna, MyoKardia, NirvaMed, Novartis, Novo Nordisk, Owkin, Pfizer, PhaseBio, PLx Pharma, Recardio, Regeneron, Reid Hoffman Foundation, Roche, Sanofi, Stasys, Synaptic, The Medicines Company, Youngene, and 89Bio; has received royalties from Elsevier (Editor, Braunwald's Heart Disease), has been a site co-investigator for Abbott, BIOTRONIK, Boston Scientific, CSI, Endotronix, St. Jude Medical (now Abbott), Philips, SpectraWAVE, Svelte, and Vascular Solutions; has been a trustee for the American College of Cardiology; and has worked on unfunded research for FlowCo and Takeda. GAS has acted as a consultant for Pfizer Inc, and was an employee of Syneos Health Inc at the time of the analysis, who were paid contractors to Pfizer Inc in the development of this manuscript and in providing statistical support. SRY has acted as a consultant for Corbus Pharmaceuticals, Kezar Life Sciences, and Pfizer Inc. SRY also acted as a member of the Steering Committee for ORAL Surveillance. CW, YC, SM, and MM are employees and shareholders of Pfizer Inc. CAC was an employee and shareholder of Pfizer Inc at the time of the analysis.

Availability of data and materials

Upon request, and subject to review, Pfizer will provide the data that support the findings of this study. Subject to certain criteria, conditions, and expectations, Pfizer may also provide access to the related individual de-identified participant data. See <https://www.pfizer.com/science/clinical-trials/trial-data-and-results> for more information.

ORCID iD

Mahta Mortezaei  <https://orcid.org/0000-0003-4666-071X>

Supplemental material

Supplemental material for this article is available online.

References

1. Scott DL, Wolfe F and Huizinga TW. Rheumatoid arthritis. *Lancet* 2010; 376: 1094–1108.

2. Kim JW and Suh CH. Systemic manifestations and complications in patients with rheumatoid arthritis. *J Clin Med* 2020; 9: 2008.
3. Maradit-Kremers H, Nicola PJ, Crowson CS, *et al.* Cardiovascular death in rheumatoid arthritis: a population-based study. *Arthritis Rheum* 2005; 52: 722–732.
4. Karpouzas GA, Ormseth SR, Hernandez E, *et al.* Impact of cumulative inflammation, cardiac risk factors, and medication exposure on coronary atherosclerosis progression in rheumatoid arthritis. *Arthritis Rheumatol* 2020; 72: 400–408.
5. Solomon DH, Goodson NJ, Katz JN, *et al.* Patterns of cardiovascular risk in rheumatoid arthritis. *Ann Rheum Dis* 2006; 65: 1608–1612.
6. Ozen G, Pedro S, Schumacher R, *et al.* Risk factors for venous thromboembolism and atherosclerotic cardiovascular disease: do they differ in patients with rheumatoid arthritis? *RMD* 2021; 7: e001618.
7. Solomon DH, Reed GW, Kremer JM, *et al.* Disease activity in rheumatoid arthritis and the risk of cardiovascular events. *Arthritis Rheumatol* 2015; 67: 1449–1455.
8. Meissner Y, Zink A, Kekow J, *et al.* Impact of disease activity and treatment of comorbidities on the risk of myocardial infarction in rheumatoid arthritis. *Arthritis Res Ther* 2016; 18: 183.
9. Zhang J, Chen L, Delzell E, *et al.* The association between inflammatory markers, serum lipids and the risk of cardiovascular events in patients with rheumatoid arthritis. *Ann Rheum Dis* 2014; 73: 1301–1308.
10. Agca R, Heslinga SC, Rollefstad S, *et al.* EULAR recommendations for cardiovascular disease risk management in patients with rheumatoid arthritis and other forms of inflammatory joint disorders: 2015/2016 update. *Ann Rheum Dis* 2017; 76: 17–28.
11. Molander V, Bower H, Frisell T, *et al.* Risk of venous thromboembolism in rheumatoid arthritis, and its association with disease activity: a nationwide cohort study from Sweden. *Ann Rheum Dis* 2021; 80: 169–175.
12. Baecklund E, Ekblom A, Sparén P, *et al.* Disease activity and risk of lymphoma in patients with rheumatoid arthritis: nested case-control study. *BMJ* 1998; 317: 180–181.
13. Hellgren K, Baecklund E, Backlin C, *et al.* Rheumatoid arthritis and risk of malignant lymphoma: is the risk still increased? *Arthritis Rheumatol* 2017; 69: 700–708.
14. Simon TA, Thompson A, Gandhi KK, *et al.* Incidence of malignancy in adult patients with rheumatoid arthritis: a meta-analysis. *Arthritis Res Ther* 2015; 17: 212.
15. Baecklund E, Iliadou A, Askling J, *et al.* Association of chronic inflammation, not its treatment, with increased lymphoma risk in rheumatoid arthritis. *Arthritis Rheum* 2006; 54: 692–701.
16. Au K, Reed G, Curtis JR, *et al.* High disease activity is associated with an increased risk of infection in patients with rheumatoid arthritis. *Ann Rheum Dis* 2011; 70: 785–791.
17. Emery P, Gallo G, Boyd H, *et al.* Association between disease activity and risk of serious infections in subjects with rheumatoid arthritis treated with etanercept or disease-modifying anti-rheumatic drugs. *Clin Exp Rheumatol* 2014; 32: 653–660.
18. Accortt NA, Lesperance T, Liu M, *et al.* Impact of sustained remission on the risk of serious infection in patients with rheumatoid arthritis. *Arthritis Care Res* 2018; 70: 679–684.
19. Fraenkel L, Bathon JM, England BR, *et al.* 2021 American College of Rheumatology guideline for the treatment of rheumatoid arthritis. *Arthritis Rheumatol* 2021; 73: 1108–1123.
20. Smolen JS, Landewé R, Bijlsma J, *et al.* EULAR recommendations for the management of rheumatoid arthritis with synthetic and biological disease-modifying antirheumatic drugs: 2016 update. *Ann Rheum Dis* 2017; 76: 960–977.
21. Smolen JS, Landewé R, Breedveld FC, *et al.* EULAR recommendations for the management of rheumatoid arthritis with synthetic and biological disease-modifying antirheumatic drugs: 2013 update. *Ann Rheum Dis* 2014; 73: 492–509.
22. Smolen JS, Landewé RBM, Bijlsma JWJ, *et al.* EULAR recommendations for the management of rheumatoid arthritis with synthetic and biological disease-modifying antirheumatic drugs: 2019 update. *Ann Rheum Dis* 2020; 79: 685–699.
23. Fleischmann R, Curtis JR, Charles-Schoeman C, *et al.* Safety profile of upadacitinib in patients at risk of cardiovascular disease: integrated post hoc analysis of the SELECT phase III rheumatoid arthritis clinical programme. *Ann Rheum Dis* 2023; 82: 1130–1141.
24. Ytterberg SR, Bhatt DL, Mikuls TR, *et al.* Cardiovascular and cancer risk with tofacitinib in rheumatoid arthritis. *New Engl J Med* 2022; 386: 316–326.

25. Aletaha D, Neogi T, Silman AJ, *et al.* 2010 Rheumatoid arthritis classification criteria: an American College of Rheumatology/European League against rheumatism collaborative initiative. *Arthritis Rheum* 2010; 62: 2569–2581.
26. Pope JE and Choy EH. C-reactive protein and implications in rheumatoid arthritis and associated comorbidities. *Semin Arthritis Rheum* 2021; 51: 219–229.
27. Koene RJ, Prizment AE, Blaes A, *et al.* Shared risk factors in cardiovascular disease and cancer. *Circulation* 2016; 133: 1104–1114.
28. Crowson CS, Hoganson DD, Fitz-Gibbon PD, *et al.* Development and validation of a risk score for serious infection in patients with rheumatoid arthritis. *Arthritis Rheum* 2012; 64: 2847–2855.
29. Kitas GD and Gabriel SE. Cardiovascular disease in rheumatoid arthritis: state of the art and future perspectives. *Ann Rheum Dis* 2011; 70: 8–14.
30. Andersen PK and Gill RD. Cox's regression model for counting processes: a large sample study. *Ann Stat* 1982; 10: 1100–1120.
31. Cox DR. Regression models and life-tables. *J R Stat Soc Series B Stat Methodol* 1972; 34: 187–202.
32. Mortezaei M and Mysler EF. Clinical scenarios-based guide for tofacitinib in rheumatoid arthritis. *Ther Adv Chronic Dis* 2023; 14: 20406223231178273.
33. Sproston NR and Ashworth JJ. Role of C-reactive protein at sites of inflammation and infection. *Front Immunol* 2018; 9: 754.
34. Winthrop KL, Yamanaka H, Valdez H, *et al.* Herpes zoster and tofacitinib therapy in patients with rheumatoid arthritis. *Arthritis Rheumatol* 2014; 66: 2675–2684.
35. Winthrop KL, Nash P, Yamaoka K, *et al.* Incidence and risk factors for herpes zoster in patients with rheumatoid arthritis receiving upadacitinib: a pooled analysis of six phase III clinical trials. *Ann Rheum Dis* 2022; 81: 206–213.
36. Winthrop KL, Harigai M, Genovese MC, *et al.* Infections in baricitinib clinical trials for patients with active rheumatoid arthritis. *Ann Rheum Dis* 2020; 79: 1290–1297.
37. Goodson NJ, Symmons DP, Scott DG, *et al.* Baseline levels of C-reactive protein and prediction of death from cardiovascular disease in patients with inflammatory polyarthritis: a ten-year followup study of a primary care-based inception cohort. *Arthritis Rheum* 2005; 52: 2293–2299.
38. Yoshida K, Harrold LR, Middaugh N, *et al.* Time-varying association of rheumatoid arthritis disease activity to subsequent cardiovascular risk. *ACR Open Rheumatol* 2022; 4: 587–595.
39. Curtis J, Yamaoka K, Chen YH, *et al.* Malignancies in patients aged ≥ 50 years with RA and ≥ 1 additional cardiovascular risk factor: results from a phase 3b/4 randomized safety study of tofacitinib vs TNF inhibitors [Abstract]. *Arthritis Rheumatol* 2021; 73 (Suppl. 9): 1940.
40. Chowdhury MZI and Turin TC. Variable selection strategies and its importance in clinical prediction modelling. *Fam Med Community Health* 2020; 8: e000262.
41. Heinze G, Wallisch C and Dunkler D. Variable selection - a review and recommendations for the practicing statistician. *Biom J* 2018; 60: 431–449.