

UCLA

UCLA Previously Published Works

Title

A new oral testosterone undecanoate therapy comes of age for the treatment of hypogonadal men

Permalink

<https://escholarship.org/uc/item/45n5z9f3>

Authors

Swerdloff, Ronald S
Dudley, Robert E

Publication Date

2020

DOI

10.1177/1756287220937232

Peer reviewed

A new oral testosterone undecanoate therapy comes of age for the treatment of hypogonadal men

Ronald S. Swerdloff  and Robert E. Dudley

Ther Adv Urol

2020, Vol. 12: 1–16

DOI: 10.1177/
1756287220937232

© The Author(s), 2020.
Article reuse guidelines:
sagepub.com/journals-
permissions

Abstract

Background: A novel formulation of oral testosterone undecanoate (TU) was studied in a long- and short-term phase III trial to evaluate safety and efficacy.

Methods: Hypogonadal men (age 18–65 years; two morning serum testosterone (T) <300 ng/dl with signs/symptoms) were recruited into a 365 day (trial I) or 105 day (trial II), randomized, multicenter trial. Patients were randomized 1:1 to oral TU ($n=161$) or T-gel ($n=160$) in trial I, and 3:1 to oral TU, twice daily (BID) JATENZO® ($n=166$) or a topical T product [Axiron® ($n=56$)] in trial II. Dose adjustments were based on average T concentrations (C_{avg}). Efficacy was assessed based on T levels, body composition and bone density. Safety was assessed by standard clinical measures.

Results: Oral TU efficacy (% of patients with eugonadal T C_{avg}) was 84% (serum $C_{avg}=628 \pm 343$ ng/dl) and 87% (serum T equivalent $C_{avg} \approx 489 \pm 155$ ng/dl) in trials I and II, respectively. Oral TU significantly ($p < 0.0001$) improved all Psychosexual Daily Questionnaire parameters in trials I and II. In trial I, lean mass increased 3.2 ± 2.7 kg and fat decreased by 2.4 ± 3.6 kg (both $p < 0.0001$) and bone density improved in hip ($+0.012 \pm 0.0225$ g/cm²) and spine ($+0.018 \pm 0.0422$ g/cm²) after 365 days (both $p < 0.0001$). Oral TU-associated adverse effects were consistent with other T-replacement therapies but oral TU patients experienced a greater number of mild gastrointestinal adverse effects. Oral TU subjects in both studies exhibited an increase in mean systolic blood pressure of about 3–5 mmHg. Oral TU was not associated with liver toxicity nor did it cause an elevation in high-sensitivity C-reactive protein or lipoprotein-associated phospholipase A₂ (cardiovascular safety biomarkers) after 365 days of therapy.

Conclusion: A new oral TU formulation was safe and effective and represents a significant therapeutic advance for the treatment of appropriate hypogonadal men.

Keywords: male hypogonadism, testosterone, testosterone undecanoate

Received: 6 May 2020; revised manuscript accepted: 1 June 2020.

Introduction

Testosterone (T)-replacement therapy (TRT) has evolved over time to provide healthcare providers and their hypogonadal patients with numerous treatment options. Beginning with early use of implanted T-pellets to injectable T-esters to oral methyltestosterone to a first-generation oral T-undecanoate (TU) product to scrotal and non-scrotal T patches and then to topical T-gels, the number of TRT choices

continues to evolve.¹ More recent additions to the TRT armamentarium include a buccal patch, a long-acting T-undecanoate injection (intramuscular) product, a short-acting T-enanthate injection (e.g. 7 days; subcutaneous) and a nasal T-gel. Each of these delivery routes are associated with well-known drawbacks, including pain of injection, dermal irritation, T transference and potentially serious liver toxicity (e.g. oral methyltestosterone). In addition, dose adjustment to

Correspondence to:
Ronald S. Swerdloff
David Geffen School of
Medicine at UCLA, Division
of Endocrinology, Harbor-
UCLA Medical Center,
The Lundquist Institute
at Harbor-UCLA Medical
Center, 1124 W. Carson
Street, Torrance, CA
90502, USA
swerdloff@lundquist.org

Robert E. Dudley
Clarus Therapeutics Inc.,
Northbrook, IL, USA



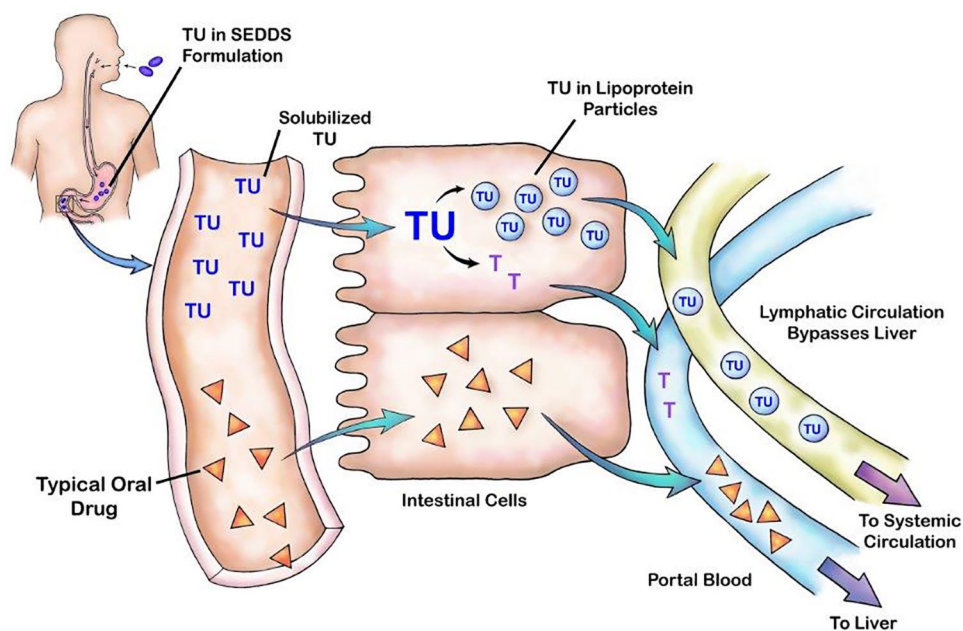


Figure 1. Pictorial representation of TU lymphatic absorption after oral delivery in SEDDS formulation. SEDDS, self-emulsifying drug delivery system; TU, testosterone undecanoate.

individualize patient response to these TRT methods can be challenging. Missing from the health-care professional's stable of TRT products is an oral T formulation that meets the current rigorous regulatory standards for safety and efficacy.

Historically, efforts to administer oral T have taken two primary paths: alkylation of T at the C-17 position to create T analogs that are resistant to first-pass hepatic metabolism (exemplified by methyltestosterone);² or fatty-acid esterification of T to create a T-ester (exemplified by TU) that is absorbed *via* the intestinal lymphatic system thus bypassing the portal circulation.³ Oral methyltestosterone, originally discovered and used clinically in the mid-1930s,¹ is the only oral TRT ever approved for use in the US, but has been associated with serious hepatotoxicity such as cholestasis, peliosis hepatis, and hepatic adenocarcinoma⁴⁻⁶ and therefore is not recommended for clinical management of male hypogonadism. Conversely, while oral TU has not been associated with liver toxicity, an early oral TU formulation approved for use in many countries but never in the US (Andriol®) was highly influenced by dietary fat, thus leading to significant intra- and inter-patient variability in T response and questionable clinical utility.^{7,8} Reformulation of this product to reduce the effect of dietary fat did not address the low TU content of the capsules, thus

resulting in the need to dose hypogonadal men with several capsules three or more times daily. Even then, reported serum T response would not result in average serum T levels in the normal range⁹ and therefore would not pass current-day regulatory scrutiny for efficacy. Consequently, these oral TU formulations have never been widely used to treat T deficiency although they remain available in many countries.

To address the absence of an oral TRT product that meets current-day regulatory requirements for efficacy and safety, TU was formulated in a unique self-emulsifying drug delivery system (SEDDS) that was initially evaluated in short-term clinical studies.⁹ SEDDS formulations combine hydrophilic and lipophilic excipients that enable the solubilization of highly lipophilic molecules like TU in the gut so that they may be absorbed after oral ingestion with a typical meal (no high-fat content required).¹⁰ As depicted in Figure 1, absorption of oral TU occurs almost exclusively (>97%) *via* the intestinal lymphatic system, thereby bypassing the liver.^{3,11} Once in the circulation, endogenous non-specific esterases cleave T from the parent TU pro-drug. Each undecanoic (U) acid molecule (a straight-chain C-11 fatty acid) is metabolized by beta-oxidation to yield several molecules of acetyl-coenzyme-A and a single molecule of propionyl-coenzyme A.

An unexpected finding during development of this new oral TU formulation was the degree of enzymatic cleavage of T from TU that can occur during blood-sample handling. This can lead to T assay values that do not reflect the actual circulating T concentrations; that is, they are artefactually high.^{12,13} Therefore, to determine efficacy based on the most accurate T concentrations in blood after oral TU, post-collection conversion of TU to T was minimized in men dosed with oral TU in the pivotal clinical trial described herein by assaying for T in plasma derived from blood collected into NaF-EDTA (sodium fluoride-ethylenediaminetetraacetic acid) tubes that were held on ice prior to centrifugation (a process that halts essentially all TU to T conversion). Additional studies (not detailed herein) were conducted to derive a correction that enabled the conversion of the average T concentration (C_{avg}) values attained from NaF-EDTA plasma into approximately equivalent serum T concentrations [In essence (due largely to a matrix effect), LC/MS-MS assay of T in NaF-EDTA plasma from men treated with oral TU yields a T value that is roughly 20% lower than a matched serum T value].

This was important for two reasons. First, real-world clinical monitoring of T is based on serum T measurements. Second, it was necessary to adapt the dose-titration algorithm utilized in the pivotal trial of JATENZO (where T was assayed in NaF-EDTA plasma) for use with a single serum sample derived from blood collected into a standard plain collection tube (i.e. without added chemicals).

The present article summarizes two phase III clinical trials conducted to demonstrate long- and short-term safety and efficacy of a new oral TU formulation (JATENZO[®]) studies CLAR-09007, trial I [ClinicalTrials.gov identifier: NCT01403116] and CLAR-15012, trial II [ClinicalTrials.gov identifier: NCT00272278]. The primary difference between these studies was the starting oral TU dose and subsequent dose-titration algorithm employed to maximize the percentage of patients who achieved T C_{avg} within the eugonadal range without unacceptable peak T concentrations (C_{max}). Additionally, in trial II, we evaluated T responses based on T concentrations in NaF-EDTA plasma, while serum T measurements were used in trial I that, in retrospect, yielded T concentrations that were artefactually elevated (by approximately 20%) due to post-collection of TU to T during blood-sample processing.^{12,13}

Materials and methods

The phase III clinical trials detailed herein were approved by a central or site-specific institutional review boards before study initiation at each clinical site and were conducted in accordance with the Declaration of Helsinki and/or all relevant federal regulations, including good clinical practice guidelines. Written informed consent was obtained from trial participants before any study-related procedures were conducted.

Patient populations

Eligible patients were men aged 18–65 years, body mass index $<38\text{ kg/m}^2$, with hypogonadism as defined by verified low morning serum total T $<300\text{ ng/dl}$ (blood samples collected between 0600 h and 1000 h on 2 separate days approximately 7 days apart) and a history of signs and/or symptoms consistent with hypogonadism. Patients were naïve to androgen-replacement therapy or had an adequate washout of previous androgen-replacement therapies. Patients were excluded if they had significant uncontrolled intercurrent disease of any type, hematocrit (Hct) $<35\%$ or $>48\%$, history of polycythemia, untreated, severe obstructive sleep apnea, abnormal digital rectal exam, prostate-specific antigen (PSA) $>4.0\text{ ng/ml}$, International Prostate Symptom Score >19 or history of prostate cancer. Prohibited medications included those that could affect T levels, T metabolism, or levels of T metabolites (e.g. antiandrogens, 5- α -reductase inhibitors, estrogens, long-acting opioid analgesics, or human growth hormone), as well as nutritional supplements that could possibly increase serum T (e.g. androstenedione or dehydroepiandrosterone).

Primary and secondary efficacy parameters

The primary efficacy variable for each study was the proportion of oral TU-treated patients who achieved a 24-h T C_{avg} in the eugonadal range (as defined for each study based on assay of T in serum or NaF-EDTA plasma) after two opportunities for dose adjustment. In both studies, serial blood samples were drawn at approximately –30 min and 0, 2, 4, 6, 8, and 12-h after the morning and evening oral TU doses for assay of T. Current US regulatory (i.e. US Food and Drug Administration, FDA) standards dictate that at least 75% of patients must achieve this mark with a 95% lower confidence interval (CI) of $\geq 65\%$. Secondary efficacy was based on the proportion of patients whose C_{max} aligned with the following

Table 1. Key design features of phase III studies.

Design feature	Trial I (CLAR-09007)	Trial II (CLAR-15012) ^b
Patient population	Hypogonadal men (age 18–75 years)	Hypogonadal men (age 18–65 years)
Starting dose of oral TU	316 mg BID	237 mg BID
Number of possible dose titration steps	1 or 2	2
Time of dosing relative to a.m. and p.m. meal	≤30 min after start of meal ^c	Immediately before meal ^c
Topical T control group	AndroGel® 1%	Axiron®
Randomization ratio (oral TU: control)	1:1	3:1
Subjects dosed with oral TU (<i>n</i>)	161	166
T measured for dose titration	Single sample [C _{4–6}] ^d	Multiple PK samples ^e
Primary efficacy parameter	Proportion of oral TU group with C _{avg} in serum T eugonadal range (300–1000 ng/dl)	Proportion of oral TU group with C _{avg} in NaF-EDTA plasma T eugonadal range (252–907 ng/dl)
Primary oral TU T endpoint	C _{avg}	C _{avg}
Secondary T C _{max} endpoint ^a	Yes	Yes
Psychosexual Daily Questionnaire ^f	No	Yes
Safety labs (hematology; chemistry)	Yes	Yes
LC/MS-MS assay of T	Yes (serum)	Yes (NaF-EDTA plasma)
Body composition and BMD (DEXA)	Yes	No
ClinicalTrials.gov identifier	NCT01403116	NCT0272278

^aPercentage of subjects with testosterone C_{max} < 1500 ng/dl, 1800–2500 ng/dl, and > 2500 ng/dl.

^bPivotal trial on which efficacy was based for FDA approval.

^cMeals contained typical fat content and were not required to be 'high fat' meals.

^dBlood sample taken 4–6 h after morning oral TU dose.

^eT C_{avg} calculated on basis of 12 h area under the curve; these data plus concordance analyses were used to determine best single-sample timepoint after morning oral TU dose to guide real-world dose-adjustment decisions.

^fThe PDQ¹⁴ was used to assess sexual function and mood changes. Patients were asked to complete the questionnaire every day for 7 consecutive days before day 1 and the last study day (end of study). Each domain of the PDQ (sexual desire, enjoyment and performance, mood, and sexual activity score) was evaluated.

a.m., morning; BID, twice daily; BMD, bone mineral density; DEXA, dual-emission X-ray absorptiometry; C_{avg}, time-weighted average concentration; C_{max}, maximum observed concentration; FDA, US Food and Drug Administration; LC/MS-MS, liquid chromatography–tandem mass spectrometry; NaF-EDTA, sodium fluoride-ethylenediaminetetraacetic acid; PDQ, Psychosexual Daily Questionnaire; p.m., evening; T, testosterone; TU, testosterone undecanoate.

FDA targets: ≥85% with C_{max} ≤1500 ng/dl; ≤5% with C_{max} between 1800 and 2500 ng/dl; and no patients with C_{max} >2500 ng/dl.

Study design features

Both studies were open-label, randomized trials of an oral SEDDS formulation of TU [JATENZO®; TU capsules]. Key design features are summarized

in Table 1. A topical T control group [i.e. T-gel (AndroGel® 1%) or T-solution (Axiron®)] served as a positive control arm for comparative safety assessments in trials I and II, respectively. However, oral TU efficacy was evaluated independent of that observed with topical T. In each study, participants in both treatment groups were provided up to two opportunities for adjustment of their T dose based on individual responses to oral TU (per protocol)

or topical T (per product labeling instructions). In general, a patient's serum/plasma T C_{avg} was compared with pre-specified values that would trigger no change in oral TU or topical T dose or an up or down adjustment per protocol. The dose-adjustment algorithm for trial I was based on earlier phase II studies of oral TU, whereas the dose-adjustment paradigm for trial II was based on simulation and modeling of serum pharmacokinetic (PK) data from trial I and another clinical trial of oral TU, namely CLAR-12011 [ClinicalTrials.gov identifier: NCT01765179]. Each study assessed the impact of oral TU therapy on various patient-reported outcomes [e.g. Psychosexual Daily Questionnaire (PDQ)]¹⁴ and, in the long-term trial CLAR-09007, the effect of oral TU on body composition and bone mineral density parameters as measured by dual-emission X-ray absorptiometry.

Safety measures included physical examination, vital signs, fasting clinical laboratory analysis (hematology, chemistry, urinalysis), cardiovascular (CV) biomarker monitoring [high-sensitivity C-reactive protein (hs-CRP),^{15,16} lipoprotein-associated phospholipase A₂ (Lp-PLA₂),¹⁷ lipoprotein a (Lp(a)),¹⁸ and apolipoprotein A1 (Apo-A1)¹⁹ in trial I only; hs-CRP is a strong independent predictor of CV disease risk and its reduction, for example, by rosuvastatin in the JUPITER trial showed a reduction in subjects with normal LDL (see Ridker *et al.*¹⁶). Lp-PLA₂ is an inflammatory enzyme secreted by macrophages and found in atherosclerotic plaque. Epidemiological studies have demonstrated that Lp-PLA₂ mass or activity is an independent risk factor for coronary or cerebrovascular events. Lp(a) is a well-recognized CV disease risk factor with elevations being associated with higher CV risk. Apo-A1 is the main constituent of HDLc and is known to drop by some degree across essentially all TRT regimens], measurement of free T, dihydrotestosterone (DHT), sex-hormone binding globulin (SHBG); luteinizing hormone (LH), follicle-stimulating hormone (FSH); PSA, and the American Urological Association/International Prostate Symptom Score (AUA/I-PSS). Prostate volume was assessed in patients enrolled in trial I by transrectal prostate ultrasound. Cuff blood pressure (BP) was measured in both studies and 24 h BP and heart-rate values were acquired every 20 min through ambulatory BP monitoring (ABPM; Spacelabs, Inc, Redmond, WA, US) on the day before the baseline visit and again, 1–3 days prior to the final PK visit in the pivotal trial (trial II).

Oral TU dose-adjustment paradigms

About 4 and 8 weeks after oral TU therapy was initiated in each trial, patients could have their TU dose adjusted based on T C_{avg} response in relationship to prespecified T ranges that would guide any change and the magnitude of that change. In general, dose adjustments ranged from about ± 20 –30% of the prior oral TU dose based on the oral TU capsule strengths available for each study. In trial II, two approaches were taken to determine the optimal time for the assessment of circulating T on the basis of a single blood sample after the morning oral TU dose to guide dosing in real-world clinical settings where T response to TRT is determined from a single blood sample. First, extensive simulation ($n = 1000$ simulated patient runs) and modeling of PK data was used to identify a discrete blood sampling range (e.g. 4–6 h after oral TU) that would consistently yield a T value in close agreement with the actual T C_{avg} based on serial PK samples. Second, concordance analysis was performed to identify the best post-dose T assay timepoint to guide any necessary dose adjustment in oral TU patients. Concordance is defined herein to describe the extent of agreement between a decision to adjust the oral TU dose (up or down) when a single circulating T concentration remains within the hypogonadal range [i.e. <252 ng/dl (9 nmol/l) for this study] or supra-physiological range [i.e. >907 ng/dl (31 nmol/l)] and the desired outcome of that decision (i.e. a circulating T level in the eugonadal range) is achieved.

Statistical methods

The proportion of oral TU-treated subjects whose 24 h total testosterone C_{avg} at the final PK visit (about days 90 and 105 in trials I and II, respectively) was in the eugonadal T range was calculated for all patients. In trial I, missing PK data were not imputed from earlier values, while in trial II, patients who dropped out prior to their final PK visit due to a possible treatment-related cause (such as an adverse event) were counted as treatment failures. Consequently, PK efficacy in trial II reflects the most conservative case. For patients in trial II who dropped out for other causes (e.g. site closure not related to study conduct), their testosterone C_{avg} was imputed using last observation carried forward (LOCF) methodology. A 95% CI for the proportion was reported, along with the estimated proportion.

Table 2. Summary of key oral TU patient demographic and disposition parameters.

Parameter	Trial I	Trial II
Mean age (years)	54.9 ± 11.1	51.6 ± 9
Mean baseline T (ng/dl)	208.1 ± 108.4	206.8 ± 80.7
Mean BMI (kg/m ²)	30.0 ± 3.9	31.8 ± 4.2
Median duration of hypogonadism (years)	4.2	4.2
% enrolled patients included in PK efficacy analyses	90.1 ^a (146/162)	100.0 ^b (166/166)
% patients that completed long-term study phase ^c	79.6 (129/162)	N/A
% patients discontinued due to adverse event	4.3 (n=7)	2.4 (n=4)
% mean compliance on oral TU	94.6 ± 17.3	96.6 ± 11.1

^aEfficacy population comprised all randomized patients who had sufficient data at day 90 PK visit to calculate serum T C_{avg}.
^bEfficacy population defined as all patients who had evaluable PK profile to calculate plasma T C_{avg} at final PK visit.
^cDay 365 of oral TU dosing.
 BMI, body mass index; C_{avg}, time-weighted average concentration; N/A, not applicable; PK, pharmacokinetics; T, testosterone; TU, testosterone undecanoate.

Oral TU was efficacious if this proportion was at least 0.75 (75%) and the lower bound of the 95% CI was at least 0.65 (65%). The proportions of oral TU subjects with testosterone C_{max} over 24h at visit 7 that were ≤1500 ng/dl; >1800 and ≤2500 ng/dl; and >2500 ng/dl were calculated. Similar analyses were conducted for topical T patients, but statistical comparisons were not made between groups.

Changes from baseline for the PDQ were summarized by treatment group, and overall for each subscale score. A 95% CI for the change from baseline within each treatment group was computed. Change from baseline for other clinical parameters of interest [body composition and bone mineral density (BMD)] and the difference between treatment groups for these endpoints was compared using an analysis of covariance (ANCOVA).

Results

Patient characteristics and disposition

Table 2 summarizes key patient characteristics and disposition parameters. Notable is that in both studies, at least 90% of enrolled subjects were included in the primary efficacy analyses. In addition, few patients discontinued due to adverse events and these typically were not a result of T

therapy. Mean compliance on oral TU therapy in both studies was ≥95%.

Primary and secondary efficacy and testosterone time-concentration profile in response to oral TU

Primary efficacy. The primary efficacy objective of both studies was to demonstrate that a mean average T concentration could be achieved in at least 75% of oral TU patients after one or two dose adjustments. As shown in Table 3, 83.6% (trial I) and 87.3% (trial II) of oral TU patients achieved circulating concentrations of T in the mid-eugonadal range and efficacy was sustained to the 12-month timepoint in the long-term study. Efficacy in the topical T arms of each study were similar in magnitude [79.0% (trial I) and 87.3% (trial II)] and not statistically different from oral TU. The C_{avg} serum T on days 90 and 365 in trial I were 628 ± 343 and 524 ± 215 ng/dl, respectively [Based on data generated after completion of CLAR-09007, it became apparent that the most accurate measure of circulating T for determination of PK efficacy in men dosed with oral TU necessitated that post-collection conversion of TU to T during blood samples processing be accounted/corrected for (see Ceponis *et al.*¹² and Lachance *et al.*¹³). We now know that the serum T values in CLAR-09007 overestimated the actual circulating level of T at the time blood was drawn

Table 3. Efficacy results for oral TU patients in trials I and II.

Target T ranges (ng/dl)	% n in each range, over 24 h ^a	95% confidence interval ^b
Day 90 trial I		
Cavg 300–1000	83.6% (n = 122)	76.5%, 89.2%
Cmax ≤1500	58.9%	
Cmax ≥1800–2500	13.0%	
Cmax >2500	13.7%	
Day 365 trial I		
Cavg 300–1000	85.0% (n = 108)	N/A
Day 120 trial II		
Cavg 252–907	87.3% (n = 166)	81.3%, 92.0%
Cmax ≤1500	90.7%	
Cmax ≥1800–2500	32.0%	
Cmax >2500	2.0% ^c	
^a On final PK day after up to two dose-adjustment opportunities. Cavg in eugonadal range must be achieved by ≥75% of oral TU patients to satisfy FDA efficacy standard. ^b Minimum lower bound of 95% confidence interval must be ≥65% to satisfy FDA standard. ^c n = 3 patients; high Cmax occurred only after a.m. oral TU dose at single site. Further investigation indicated probable sample contamination during sample handling. a.m., morning; Cavg, time-weighted average concentration; Cmax, maximum observed concentration; FDA, US Food and Drug Administration; N/A, not applicable; PK, pharmacokinetics; T, testosterone; TU, testosterone undecanoate.		

by about 20% on average]. However, these mean Cavg T were associated with peak T levels at day 90 that were higher than desired (Cmax targets established by the FDA for the percentage of patients that fall into these categories at any time-point in the efficacy trial of TRT: ≥85% of patients with Cmax <1500 ng/dl; ≤5% of patients with Cmax >1800–2500 ng/dl and no patients with a Cmax >2500 ng/dl). In contrast, and representative of the refinement in the initial oral TU dose and associated dose titration algorithm in trial II (pivotal trial), the mean NaF-EDTA plasma T Cavg observed was 403 ± 128 ng/dl [equivalent to approximately 489 ± 155 ng/dl in serum T units; conversion of a T concentration measured in NaF-EDTA plasma to an approximate equivalent T concentration measured 6 h after oral TU in serum required multiplying the NaF-EDTA plasma T concentration by 1.214. Data from CLAR-15012 indicated that the serum T concentration at this sample time after oral TU dosing is a reasonable approximation of Cavg. The overall correction factor is the product of three independent factors: 0.999 (to account for

the small amount of overestimation in the NaF-EDTA containing tube) × 1.043 (to account for the overestimation of T that would occur in the plain tube due to TU to T conversion) × 1.166 [to account for an NaF matrix effect (NaF-EDTA plasma *versus* serum)] on T measurement (see Ceponis *et al.*¹²]. In addition, Cmax frequencies observed in oral TU subjects in CLAR-15012 were closely aligned with desired targets.

Testosterone time–concentration profiles on the efficacy determination timepoints for trials I and II are shown in Figure 2. Both profiles are consistent and indicate peak T levels are achieved about 4 h after oral TU was administered. Mean peak T concentrations were within the eugonadal range only in the pivotal trial (trial II).

Single-sample dose-adjustment paradigm for oral TU. PK modeling and simulation results for circulating T confirmed that dose-titration decisions based on a single blood sample taken 3–5 h or at 4 h after the morning oral TU dose was an effective means to guide dose adjusting to achieve/

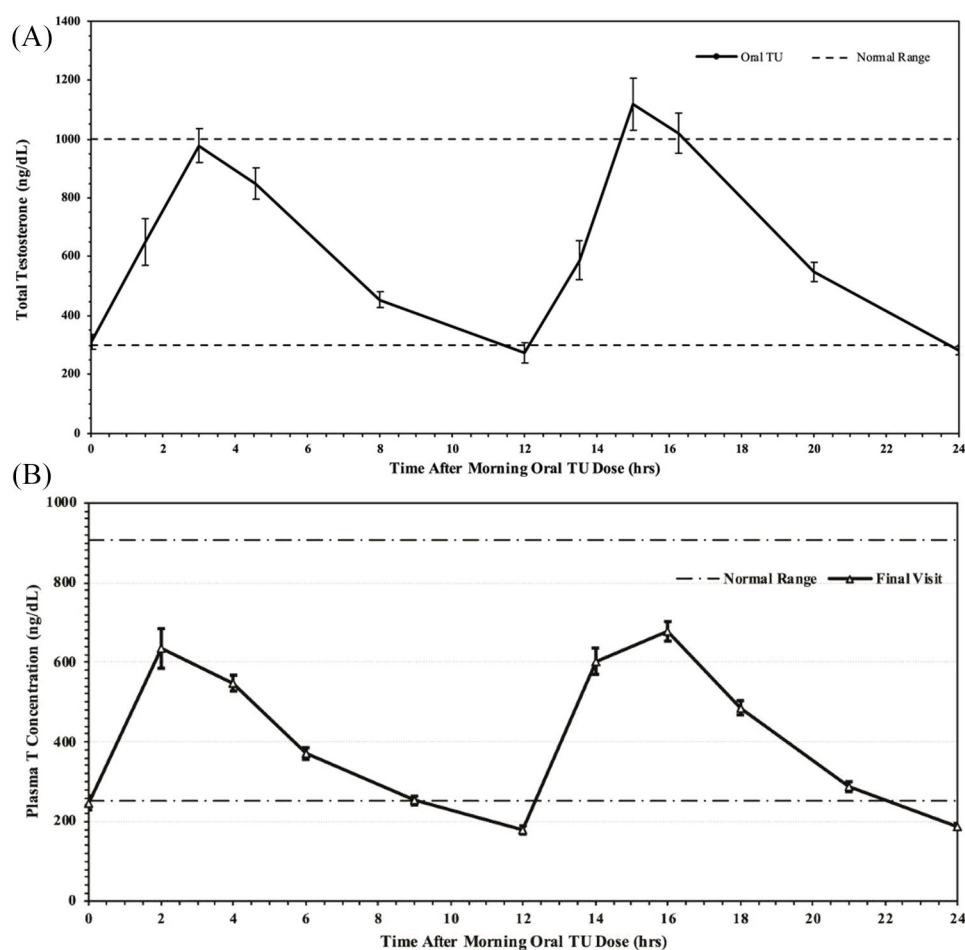


Figure 2. Mean concentration–time profiles for total serum T in patients treated with oral TU at final PK visit in trial I, and for NaF-EDTA plasma total T in patients treated with oral TU at final PK visit in trial II. (a) Mean (\pm SE) concentration–time profiles for total serum T in patients treated with oral TU at final PK visit (day 90) in trial I; (b) mean (\pm SE) concentration–time profiles for NaF-EDTA plasma total T in patients treated with oral TU at final PK visit (day 90/105) in trial II*.

*Values in graph can be converted to approximate serum T equivalents by multiplying by 1.214. Mean T C_{avg} in serum = 403 ± 128 ng/dL $\times 1.214$ (correction factor) $\approx 489 \pm 158$ ng/dL serum T units. Data published previously.²⁰ C_{avg} , average T concentrations; NaF-EDTA, sodium fluoride-ethylenediaminetetraacetic acid; PK, pharmacokinetics; SE, standard error; T, testosterone; TU, testosterone undecanoate.

maintain T concentrations in the eugonadal range. As shown in Table 4, regardless of the three measures used to determine the need to adjust the oral TU dose (i.e. C_{avg} based on serial PK blood sampling, a single blood sample 4 h after the morning dose or a single sample taken any time between 3 h and 5 h after oral TU), efficacy was high, with 95% of patients achieving a C_{avg} in the eugonadal range and <5% of patients with a mean T level below normal. Concordance analyses (data not contained herein) indicate that for the first and second PK visits, total concordance was 88% and 93%, respectively, when a single blood sample for T assay was collected 4 h after the oral TU dose. When total concordance was

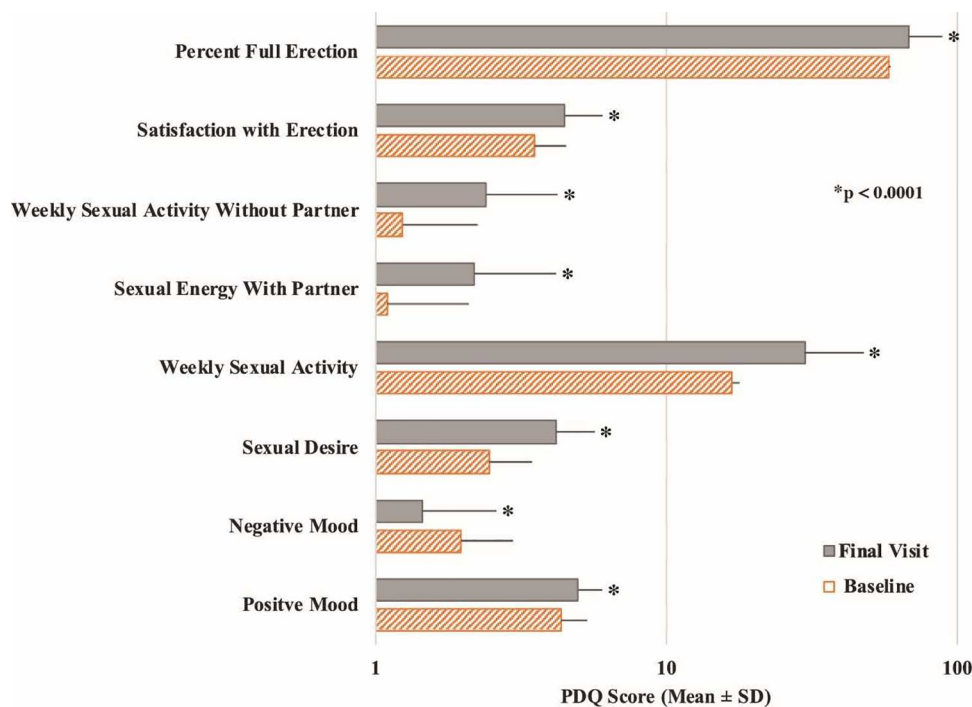
analyzed on the basis of a single T concentration at 6 h after oral TU at the first and second PK visit, total concordance was 98% and 96%, respectively.

Secondary efficacy. In trial I, three secondary efficacy parameters were assessed: PDQ (a measure of psychosexual function), body composition (i.e. lean and fat mass) and BMD of hip and spine. Although there was no statistically significant difference in PDQ responses between the oral TU groups, oral TU was associated with a statistically significant improvement from baseline ($p < 0.0001$) in all PDQ responses (Figure 3). Similarly, there were no significant differences between oral TU

Table 4. PK simulation results evaluating mean T concentration (*Cavg*) versus time of single-sample collection [4 (*C₄*) or 3–5 (*C_{3–5}*) h after oral TU]] as surrogate for true *Cavg**

Estimated % of patients with <i>Cavg</i> within target T interval (95% CI) on final PK visit			
	<252 ng/dl	252–907 ng/dl	>907 ng/dl
Target at final PK visit		≥75%	
<i>Cavg</i> -based titration schemes	3.4 (0.0–8.5)	94.8 (88.9–99.0)	1.8 (0.0–4.0)
Single draw status sample at defined timepoint (<i>C₄</i>)	4.6 (1.5–8.7)	94.4 (89.8–98.0)	1.0 (0.0–3.1)
Single draw status sample in <i>C_{3–5}</i> window	4.7 (1.0–10.0)	94.3 (89.0–98.5)	1.0 (0.0–3.0)

*These data were previously published.²⁰
C_{3–5}, T concentration 3–5 h after morning dose; *C₄*, T concentration 4 h after morning dose; *Cavg*, average observed concentration over 24 h; CI, confidence interval; *Cmax*, maximum T concentration; PK, pharmacokinetics; T, testosterone.

**Figure 3.** Effect of oral TU on change from baseline in psychosexual function (PDQ) responses over the 4-month treatment period in trial I.

PDQ, Psychosexual Daily Questionnaire; SD, standard deviation; TU, testosterone undecanoate.

and T-gel for spine BMD ($p=0.6002$) but there were statistically significant differences between oral TU and topical T in other parameters, with the oral TU group having a greater increase in hip bone density ($p=0.0019$) and lean mass ($p<0.0001$), and greater loss of fat mass ($p=0.0056$) compared with T-gel. These differences were not only statistically significant, but clinically meaningful. During the course of the

study, lean mass increased by a mean of 3.16 ± 2.70 kg from baseline, and fat mass decreased by 2.40 ± 3.64 kg at day 365 (Figure 4), both significant with a $p<0.0001$.

Consistent with the findings observed in the long-term study, patients in study trial II also exhibited statistically significant improvements from baseline ($p<0.0001$) in all PDQ parameters shown in

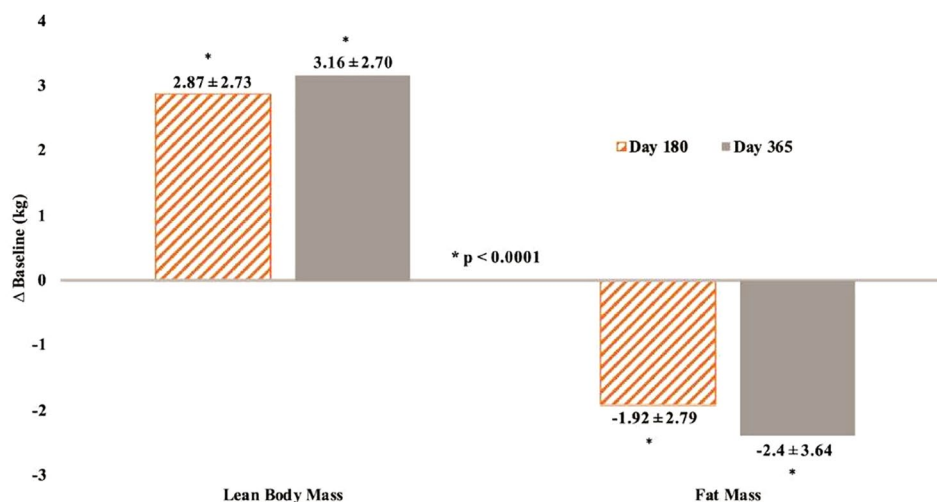


Figure 4. Effect of 6- and 12-month oral TU therapy on mean (\pm) changes from baseline in lean body mass and fat mass in trial I. TU, testosterone undecanoate.

Table 5. Incidence of treatment-emergent adverse events related to long-term oral TU and T-gel therapy in study trial I.

Adverse event	Oral TU	T-gel
Elevated hematocrit	6.8% (11/161)	3.1% (5/160)
Peripheral edema	5.5% (9/161)	1.3% (2/160)
Diarrhea	3.1% (5/161)	0% (0/160)
Eructation (burping)	2.5% (4/161)	0% (0/160)
Hypertension	3.7% (6/161)	6.9% (11/160)
Acne	0.6% (1/161)	2.5% (4/160)
Gynecomastia	0.6% (1/161)	0.6% (1/160)
Enlarged prostate	5.6% (9/161)	1.9% (3/160)
Elevated PSA	2.5% (4/161)	4.4% (7/160)

PSA, prostate-specific antigen; TU, testosterone undecanoate.

Figure 3. Difference in PDQ response between treatment groups was not significant.

Safety: long-term study (trial I). No deaths occurred in response to daily oral TU exposure for 365 days. Two subjects in the oral TU group experienced an acute myocardial infarction; one in the setting of hospitalization for pneumonia. Neither event was considered to be causally related to oral TU in light of their respective cardiovascular (CV) disease histories. Treatment-emergent adverse events (TEAEs) considered by

study investigators to be likely related to oral TU and T-gel exposure are summarized in Table 5. Not surprisingly, there was a higher incidence of gastrointestinal (GI) side effects associated with oral TU than topical T-gel. However, these GI effects were mild in nature and did not result in discontinuation of oral TU. Other adverse events are typical of TRT and to the extent the incidence was higher in the oral TU *versus* T-gel group reflected differences in delivery route or T exposure (T Cavg in oral TU group was significantly greater than in the T-gel arm).

The mean baseline hematocrit for oral TU patients was $44.1 \pm 2.5\%$, and absolute changes after 4 and 12 months of treatment with oral TU were $+2.1 \pm 3.4\%$ and $+2.9 \pm 3.9\%$, respectively, with both of these being statistically greater ($p < 0.0001$) than the increased observed in T-gel patients. Liver function was assessed by measurement of alanine aminotransferase (ALT) and aspartate aminotransferase (AST), total bilirubin, and alkaline phosphatase. No clinically significant changes in these parameters were observed in oral TU or T-gel patients over the 12-month course of the study, although a single patient in the oral TU group experienced two transient episodes of elevated ALT and AST that were two to three times the upper normal limit. During this period, bilirubin concentrations remained normal. At day 90, high-density lipoprotein cholesterol (HDLc) decreased more in the oral TU group (median decrease of 23.5%) compared with a decrease of 12.5% in the T-gel arm. A similar significant difference ($p < 0.0001$) between groups was observed at day 365. No clinically significant changes over time (i.e. $>5\%$) in oral TU patients or differences between groups was observed for low-density lipoprotein cholesterol (LDLc) or triglycerides. The effect of oral TU and T-gel on estradiol, FSH, and LH were similar. In contrast, mean free T concentrations increased from mean baseline values of 3.07 ± 1.85 ng/dl (oral TU) and 3.21 ± 1.88 ng/dl (T-gel) to values that were significantly higher in oral TU patients compared with T-gel patients at day 90 [13.37 ± 7.89 ng/dl (oral TU); 7.91 ± 4.68 ng/dl (T-gel)] and at day 365 [12.42 ± 5.81 ng/dl (oral TU); 7.62 ± 3.91 ng/dl (T-gel)]. This difference reflected a significantly greater reduction in mean SHBG in oral TU patients (-48% ; days 90 and 365) compared with those treated with T-gel (-10% ; days 90 and 365).

Prostate safety. We assessed prostate volume, PSA, and change in AUA/I-PSS category classification over the course of the study. Mean baseline prostate volume for oral TU was 29.3 ± 14.20 cc which was similar to the transdermal T-gel group mean baseline prostate volume of 30.7 ± 25.52 cc. Mean increase from baseline on day 365 was similar between oral TU and T-gel (2.97 ± 9.83 cc and 1.81 ± 26.40 cc, respectively) and not significantly different ($p = 0.6664$). At day 365, the absolute median increase for oral TU subjects was 0.150 ng/ml compared with the T-gel group increase of 0.100 ng/ml. These values were well below the clinically meaningful change of >1.4 ng/ml, within the

normal range and not significantly different ($p = 0.1193$). Lastly, oral TU treatment did not change the AUA/I-PSS category classification, nor did it have a substantial effect on the score. Mean decrease in score from baseline at day 90 was similar between oral TU and T-gel (0.1 ± 3.9 and 0.4 ± 3.6 , respectively), a finding that held consistent to day 365. Differences between the oral TU and T-gel group were not statistically significant ($p = 0.3565$).

Cardiovascular biomarkers: hs-CRP, Lp-PLA₂, Lp(a) and Apo-A1. The impact of oral TU therapy on CV biomarkers is summarized in Table 6. For simplicity, only baseline and day 365 data are included in this table although all biomarkers were also measured on days 90 and 180. Statistical analyses compared the absolute change in baseline over time between treatment groups using a repeated-measures analysis of variance. No statistically significant difference was observed for hs-CRP [with or without exclusion of values >10 mg/l (indicative of acute infection)] or Lp-PLA₂. There was a statistically significant difference in Lp(a) response in favor of oral TU [i.e. reduced mean Lp(a) versus small increase in T-gel group]. Conversely, there was a significantly greater reduction in mean Apo-A1 levels in oral TU-treated patients at day 365 (-18%) compared with the T-gel group (-6%) over the course of the study. Changes in Apo-A1 paralleled those observed in HDLc and were expected, since Apo-A1 is the main constituent of HDLc.

Finally, mean systolic BP increased slightly over the course of the study in both treatment groups, such that by day 365, the mean increase from baseline was about 5 mmHg and 3 mmHg in patients who received oral TU or T-gel, respectively. Heart rates in both groups increased about one beat per minute over the study.

Safety: trial II. No deaths occurred during the study, and there were no drug-related serious adverse events. The overall incidence of TEAEs considered related to study drug occurred in 18.7% of patients in the oral TU group and in 14.5% of the topical T group (Table 7). The proportion of patients who prematurely discontinued from the study due to adverse events was 1.8% in each treatment group.

The TEAEs which occurred more frequently in oral TU patients than in the topical T group were increased hematocrit, hypertension, and decreased HDLc, reported in between 3% and 5% of

Table 6. Effects of long-term oral TU therapy on CV biomarkers¹ in trial I.

Biomarker	Oral TU	T-gel	p-value ³
hs-CRP², mg/l			0.3837
Baseline	1.7 ± 1.6 (n = 153)	2.2 ± 2.0 (n = 146)	
Day 365	2.1 ± 2.0 (n = 117)	1.9 ± 1.6 (n = 124)	
Lp-PLA₂, ng/ml			0.4489
Baseline	320.1 ± 81.4 (n = 161)	312.6 ± 85.7 (n = 159)	
Day 365	284.1 ± 73.7 (n = 125)	275.2 ± 77.1 (n = 132)	
Lipoprotein(a), mg/dl			p < 0.0001 (in favor of oral TU)
Baseline	18.3 ± 22.2 (n = 161)	20.3 ± 23.0 (n = 157)	
Day 365	15.0 ± 19.2 (n = 123)	21.0 ± 23.5 (n = 130)	
Apolipoprotein A1, mg/dl			p < 0.0001 (in favor of T-gel)
Baseline	149.4 ± 27.6 (n = 161)	149.9 ± 30.1 (n = 159)	
Day 365	122.9 ± 24.6 (n = 125)	139.7 ± 29.1 (n = 132)	

¹For simplicity, only baseline and day 365 data shown. Biomarkers also assessed on days 90 and 180.

²Analysis after excluding all values > 10 mg/l. Note: analysis with all values did not affect outcome (p = 0.2781).

³Comparison of absolute change from baseline between treatment groups based on repeated (over all assay times) measures ANOVA model.

ANOVA, analysis of variance; CV, cardiovascular; hs-CRP, high-sensitivity C-reactive protein; Lp-PLA₂, lipoprotein-associated phospholipase A₂; TU, testosterone undecanoate.

Table 7. Treatment-emergent adverse events (TEAEs) considered related to T therapy in trial II.

Preferred term	Oral TU (n = 166)	Topical T (n = 55)
TEAE occurring in >2% of patients	n = 78 (47.0%)	n = 20 (36.4%)
Headache	8 (4.8)	1 (1.8)
Hematocrit increased	8 (4.8)	0
Hypertension	5 (3.0)	0
High-density lipoprotein decreased	5 (3.0)	0
Nausea	4 (2.4)	0
Rash	2 (1.2)	2 (3.6)
T, testosterone; TU, testosterone undecanoate.		

patients. Each of these events was reported as mild or moderate in intensity, and none resulted in premature discontinuation from the study. Decreased HDLc events occurred at the higher oral TU doses (316 mg and 396 mg BID), whereas events of increased hematocrit and hypertension

were not related to TU dose nor to T C_{avg} or C_{max}.

As expected, based on the pharmacological actions of T, mean increases from baseline in hematocrit were observed in both treatment groups at each

study visit but remained within the normal range in most men (97% oral TU; 100% topical T). Shifts from normal hematocrit values at baseline to above the normal range were observed in 3% of oral TU patients at the final visit, compared with none of the topical T patients.

No clinically significant changes in the liver function tests were observed in either treatment group. Two patients on oral TU experienced an inexplicable and transient elevation in ALT and AST to levels more than twice the and upper normal limit (UNL). Bilirubin levels remained normal in these patients. A third patient experienced a transient increase of AST (also more than twice UNL) during the study. Changes in lipid profiles were more pronounced among oral TU patients compared with topical T patients. Shifts from normal baseline to below the normal range for HDLc were observed in 28.9% of oral TU patients compared with 14.8% of topical T patients at the final visit; small and clinically insignificant reductions in LDLc were observed in both oral TU and topical T patients; there was no statistically significant difference in LDLc response between groups.

Clinic systolic BP increased from baseline to the end of the study (final visit) in both treatment groups [mean \pm standard deviation (SD): oral TU, 2.8 ± 11.8 mm Hg; topical T, 1.8 ± 10.8 mm Hg], whereas diastolic blood pressure was essentially unchanged at the final visit for both groups. Measurement of BP with ABPM yielded greater mean increases from baseline to end of study (approximately 2 days prior to final PK visit) in average daytime ($p < 0.01$), night-time ($p < 0.01$), and 24 h ($p < 0.002$) systolic BP for the oral TU group than for the topical T group. The 24 h average systolic BP increased 4.9 ± 8.7 mm Hg in the oral TU group and 0.2 ± 9.4 mm Hg in the topical T group ($p = 0.0013$). Among the oral TU patients, increases in systolic BP were slightly greater in patients with a history of hypertension who were receiving antihypertensive medication (mean \pm SD: 5.5 ± 8.9 mm Hg) compared with those with no history of hypertension (mean \pm SD: 4.3 ± 8.6 mm Hg). There were no discontinuations of oral TU due to hypertension; 5.9% of oral TU patients initiated antihypertensive medication or required a dose increase of existing therapy. The 24 h average heart rate in the oral TU-treated group increased by two beats per minute, while in the topical T-treated group, heart rate was unchanged from baseline. The

changes in heart rate were not statistically significant in either treatment group.

Discussion

The new oral TU formulation evaluated in this study becomes the first oral T-ester pro-drug approved by US regulatory authorities, and only the second oral androgen approved for TRT use in the US, the last being methyltestosterone over 60 years ago. While both trials described herein achieved primary efficacy, only trial II achieved both efficacy endpoints relative to average and peak T response. This reflects a more refined dose-titration algorithm in the pivotal *versus* long-term trial. We have demonstrated by two different but related analyses that a single blood sample can be collected about 4–6 h after the morning oral TU dose to assess the approximate average concentration of T over the dosing interval to reliably guide dose adjustments. In addition, concordance analyses revealed that the dose-titration algorithm employed in trial II resulted in correct clinical outcome decisions (i.e. patients achieved eugonadal T concentrations) $>95\%$ of the time. This not only validates the method used to adjust dose but should provide clinicians using this new oral TU formulation confidence that they can effectively tailor the oral TU dose for each patient. We know of no other TRT product (oral or non-oral) for which this type of concordance analysis has been conducted.

The overall safety profile of oral TU was similar in both studies and reflected the well-recognized adverse-effect profile of T therapy as a class (e.g. decreased HDLc, increased hematocrit). A minor exception to this was the occurrence of a greater number of GI-associated side effects in oral TU patients (e.g. nausea, diarrhea, burping) compared with topical T, but these were transient, minor in severity and did not result in patients discontinuing oral TU. Of particular importance is the fact that oral TU was not associated with liver toxicity in either the long- or short-term study, a sharp contrast to methyltestosterone that has been historically associated with potentially serious hepatotoxicity.

Oral TU was associated with a small but statistically significant increase in systolic BP *versus* the topical T. This observation indicates the need for regular monitoring of BP in men receiving TRT, particularly in those with existing hypertension.

The observed increase in systolic BP in some oral TU patients is consistent with effects reported for a new parenteral (subcutaneous) form of T-enanthate now marketed in the US,²¹ an older formulation of TU available outside the US (Andriol®;²²) and an oral TU product in late-stage clinical development [ClinicalTrials.gov identifier: NCT No. 03868059].²³ These findings indicate that the increase in BP may be a T-mediated effect and not one necessarily unique to TU or a particular route of TRT delivery. Furthermore, older studies of TRT have not looked closely nor used sensitive measurements of BP (e.g. with ABPM) that regulatory authorities now view as important for current-day evaluation of TRT safety. In an effort to determine the etiology of elevated BP in oral TU patients, we explored the potential relationship between rise in BP with numerous other factors (data not included herein), including: oral TU dose; total and free T; estradiol and DHT concentrations; and changes in hematocrit, hemoglobin (as a surrogate for viscosity and increase in plasma volume), potassium (as a surrogate of possible increases in mineralocorticoid levels/activity), and heart rate (as a surrogate of increases in beta-adrenergic receptor activity). None of these factors correlated with elevation in systolic BP. TRT is known to promote sodium and fluid retention,²⁴ and this may be at least one mechanism leading to elevated BP in some men dosed with oral TU. Regardless of the etiology, careful BP monitoring should be added to the other routine monitoring of men who are receiving oral TU. In addition, men treated with oral TU who have controlled hypertension should be monitored for potential increases in BP that would warrant changes to their hypertension treatment, including cessation of oral TU.

In contrast to the potential CV risk associated with elevated BP in patients treated with oral TU, we did not observe changes in other well-recognized CV risk biomarkers, namely, hs-CRP, Lp-PLA₂, and Lp(a). And while we did observe a reduction in HDLc, this is a well-known effect of androgen therapy regardless of route of administration and thus oral TU therapy is not unique in producing this effect. Moreover, HDLc biology is complicated and data now suggest that its protective role in CV disease may be less important than the CV risk posed by increases in other lipid fractions, namely, LDLc and triglycerides.^{25,26} Thus, of greater clinical importance than reduced HDLc concentrations in oral TU patients was the lack of

clinically meaningful changes in LDLc and triglyceride levels, since significant elevations in these lipid fractions (particularly LDLc) are unequivocal risk factors for CV disease.^{27,28}

In conclusion, the new oral TU formulation described herein is a safe and effective means to treat hypogonadal men and has an overall profile consistent with the class of available TRT products. As such, this product represents a significant therapeutic advance for the treatment of appropriate hypogonadal men, particularly those in the US where, until now, an oral T treatment option was essentially unavailable. Oral TU administration is convenient, and twice-daily dosing with food (i.e. with breakfast and dinner and without the need for a high fat content) is a simple regimen that should promote better patient adherence over transdermal and injectable T products that dominate use among hypogonadal men but are associated with pain of administration (injected T-esters) or with transfer of T to women and children.

Acknowledgments

The authors gratefully acknowledge the investigators who participated in the conduct of trials I and II, most notably: Christina Wang, MD (Torrance, CA), John Amory, MD (Seattle, WA), Laurence Belkoff, DO (Cynwyd, PA); Gregg Flippo, MD (Birmingham, AL), Joe Blumenau, MD (Dallas, TX), Stephen Kulback, MD (Birmingham, AL), Marc Gittelman, MD (Aventura, FL), Jed Kaminetsky, MD (New York, NY), Stanon Honig, MD (New Haven, CT), Michael Zitzmann, MD (Munster, Germany), and Herman Behre, MD (Halle, Germany). We also acknowledge James Longstreth, PhD (Longstreth & Associates) and Nastya Kassir, PhD (Pharsight Consulting Services, Division of Cetara) for their PK modeling and simulation expertise; Janet Wittes, PhD (Statistics Collaborative, Inc) and Nestor Rohowsky, MS (IDCS, Inc.) for statistical analyses; Sharon Kraus (Kraus Studios) and Esther See for assistance with figures; and Theo Danoff, MD, PhD and Sandy Faulkner, RN (both Clarus Therapeutics, Inc.) for their oversight, data analyses and report preparation for trials I and II.

Conflict of interest statement

RSS served as principal investigator for studies CLAR-09007 (trial I) and CLAR-15012 (trial II) that were funded by Clarus Therapeutics, Inc. RSS has also received support from the NIH for testosterone studies in older men, and currently

receives support from AbbVie as a study site for the Traverse Study of testosterone gel. He has also received support from NIH and NICHD for studies on male contraception where testosterone was a component of the experimental therapy. RED is employed by Clarus Therapeutics, Inc. (a private firm) and has an equity stake in the company.

Ethics statement

The studies described herein were conducted in compliance with all applicable country requirements for the conduct of clinical trials, including those outlined by the International Conference on Harmonization, Consolidated Guidelines on Good Clinical Practices, and the US Food and Drug Administration. Furthermore, both trials were approved by independent institutional review boards with jurisdiction over the respective study sites. Prior to participation in the trials, all patients signed informed consent documents.

Funding

The authors received no financial support for the research, authorship, and/or publication of this article.

ORCID iD

Ronald S. Swerdloff  <https://orcid.org/0000-0001-6084-6604>

References

1. Nieschlag E and Nieschlag S. Endocrine history: the history of discovery, synthesis and development of testosterone for clinical use. *Eur J Endocrinol* 2019; 180: R201–R12.
2. Foss GL and Simpson SL. Oral methyltestosterone and jaundice. *Br Med J* 1959; 1: 259–263.
3. Shackleford DM, Faassen WA, Houwing N, *et al.* Contribution of lymphatically transported testosterone undecanoate to the systemic exposure of testosterone after oral administration of two Andriol formulations in conscious lymph duct-cannulated dogs. *J Pharmacol Exp Ther* 2003; 306: 925–933.
4. Kicman AT. Pharmacology of anabolic steroids. *Br J Pharmacol.* 2008; 154: 502–521.
5. Westaby D, Ogle SJ, Paradinas FJ, *et al.* Liver damage from long-term methyltestosterone. *Lancet* 1977; 2: 262–263.
6. Ishak KG. Hepatic neoplasms associated with contraceptive and anabolic steroids. *Recent Results Cancer Res* 1979; 66: 73–128.
7. Skakkebaek NE, Bancroft J, Davidson DW, *et al.* Androgen replacement with oral testosterone undecanoate in hypogonadal men: a double blind controlled study. *Clin Endocrinol (Oxf)* 1981; 14: 49–61.
8. Nieschlag E, Mauss J, Coert A, *et al.* Plasma androgen levels in men after oral administration of testosterone or testosterone undecanoate. *Acta Endocrinol (Copenh)* 1975; 79: 366–374.
9. Legros JJ, Meuleman EJ, Elbers JM, *et al.* Oral testosterone replacement in symptomatic late-onset hypogonadism: effects on rating scales and general safety in a randomized, placebo-controlled study. *Eur J Endocrinol* 2009; 160: 821–831.
10. Yin AY, Htun M, Swerdloff RS, *et al.* Reexamination of pharmacokinetics of oral testosterone undecanoate in hypogonadal men with a new self-emulsifying formulation. *J Androl* 2012; 33: 190–201.
11. Horst HJ, Holtje WJ, Dennis M, *et al.* Lymphatic absorption and metabolism of orally administered testosterone undecanoate in man. *Klin Wochenschr* 1976; 54: 875–879.
12. Ceponis J, Swerdloff R, Leung A, *et al.* Accurate measurement of androgen after androgen esters: problems created by ex vivo esterase effects and LC-MS/MS interference. *Andrology*. Epub ahead of print 21 October 2018. DOI: 10.1111/andr.12554.
13. Lachance S, Dhingra O, Bernstein J, *et al.* Importance of measuring testosterone in enzyme-inhibited plasma for oral testosterone undecanoate androgen replacement therapy clinical trials. *Future Sci OA* 2015; 1: FSO55.
14. Lee KK, Berman N, Alexander GM, *et al.* A simple self-report diary for assessing psychosexual function in hypogonadal men. *J Androl* 2003; 24: 688–698.
15. Pearson TA, Mensah GA, Alexander RW, *et al.* Markers of inflammation and cardiovascular disease: application to clinical and public health practice: a statement for healthcare professionals from the Centers for Disease Control and Prevention and the American Heart Association. *Circulation* 2003; 107: 499–511.
16. Ridker PM, Danielson E, Fonseca FA, *et al.* Rosuvastatin to prevent vascular events in men and women with elevated C-reactive protein. *N Engl J Med* 2008; 359: 2195–2207.

17. Corson MA, Jones PH and Davidson MH. Review of the evidence for the clinical utility of lipoprotein-associated phospholipase A2 as a cardiovascular risk marker. *Am J Cardiol* 2008; 101: 41F–50F.
18. Kotani K, Serban MC, Penson P, *et al.* Evidence-based assessment of lipoprotein(a) as a risk biomarker for cardiovascular diseases - some answers and still many questions. *Crit Rev Clin Lab Sci* 2016; 53: 370–378.
19. Sandhu PK, Musaad SM, Remaley AT, *et al.* Lipoprotein biomarkers and risk of cardiovascular disease: a laboratory medicine best practices (LMBP) systematic review. *J Appl Lab Med* 2016; 1: 214–229.
20. Swerdloff RS, Wang C, White WB, *et al.* A new oral testosterone undecanoate formulation restores testosterone to normal concentrations in hypogonadal men. *J Clin Endocrinol Metab.* 2020; 105. DOI: 10.1210/clinem/dgaa238.
21. Gittelman M, Jaffe JS and Kaminetsky JC. Safety of a new subcutaneous testosterone enanthate auto-injector: results of a 26-week study. *J Sex Med* 2019; 16: 1741–1748.
22. Emmelot-Vonk MH, Verhaar HJ, Nakhai Pour HR, *et al.* Effect of testosterone supplementation on functional mobility, cognition, and other parameters in older men: a randomized controlled trial. *JAMA* 2008; 299: 39–52.
23. Brinster RL and Avarbock MR. Germline transmission of donor haplotype following spermatogonial transplantation. *Proc Natl Acad Sci U S A* 1994; 91: 11303–11307.
24. Kienitz T and Quinkler M. Testosterone and blood pressure regulation. *Kidney Blood Press Res* 2008; 31: 71–79.
25. Vitali C, Khetarpal SA and Rader DJ. HDL cholesterol metabolism and the risk of CHD: new insights from human genetics. *Curr Cardiol Rep* 2017; 19: 132.
26. Voight BF, Peloso GM, Orho-Melander M, *et al.* Plasma HDL cholesterol and risk of myocardial infarction: a Mendelian randomisation study. *Lancet* 2012; 380: 572–580.
27. Budoff M. Triglycerides and triglyceride-rich lipoproteins in the causal pathway of cardiovascular disease. *Am J Cardiol* 2016; 118: 138–145.
28. Neaton JD, Blackburn H, Jacobs D, *et al.* Serum cholesterol level and mortality findings for men screened in the multiple risk factor intervention trial. Multiple risk factor intervention trial research group. *Arch Intern Med* 1992; 152: 1490–1500.