

Lawrence Berkeley National Laboratory

Lawrence Berkeley National Laboratory

Title

Economics of residential gas furnaces and water heaters in United States new construction market

Permalink

<https://escholarship.org/uc/item/45q5f17f>

Author

Lekov, Alex B.

Publication Date

2010-05-11

Peer reviewed

ERNEST ORLANDO LAWRENCE

BERKELEY NATIONAL LABORATORY

**Economics of Residential Gas
Furnaces and Water Heaters in United
States New Construction Market**

Alex B. Lekov,

Victor H. Franco,

Gabrielle Wong-Parodi,

James E. McMahon, and

Peter Chan

Environmental Energy Technologies Division

October 2009

This manuscript has been authored by an author at Lawrence Berkeley National Laboratory under Contract No. DE-AC02-05CH11231 with the U.S. Department of Energy. The U.S. Government retains, and the publisher, by accepting the article for publication, acknowledges, that the U.S. Government retains a non-exclusive, paid-up, irrevocable, world-wide license to publish or reproduce the published form of this manuscript, or allow others to do so, for U.S. Government purposes.

Disclaimer

This document was prepared as an account of work sponsored by the United States Government. While this document is believed to contain correct information, neither the United States Government nor any agency thereof, nor The Regents of the University of California, nor any of their employees, makes any warranty, express or implied, or assumes any legal responsibility for the accuracy, completeness, or usefulness of any information, apparatus, product, or process disclosed, or represents that its use would not infringe privately owned rights. Reference herein to any specific commercial product, process, or service by its trade name, trademark, manufacturer, or otherwise, does not necessarily constitute or imply its endorsement, recommendation, or favoring by the United States Government or any agency thereof, or The Regents of the University of California. The views and opinions of authors expressed herein do not necessarily state or reflect those of the United States Government or any agency thereof, or The Regents of the University of California.

Ernest Orlando Lawrence Berkeley National Laboratory is an equal opportunity employer.

Economics of Residential Gas Furnaces and Water Heaters in United States New Construction Market

Alex B. Lekov, Victor H. Franco, Gabrielle Wong-Parodi,
James E. McMahon, and Peter Chan

Abstract

New single-family home construction represents a significant and important market for the introduction of energy-efficient gas-fired space heating and water heating equipment. In the new construction market, the choice of furnace and water heater type is primarily driven by first cost considerations and the availability of power vent and condensing water heaters. Little analysis has been performed to assess the economic impacts of the different combinations of space and water heating equipment. Thus, equipment is often installed without taking into consideration the potential economic and energy savings of installing space and water heating equipment combinations. In this study, we use a life-cycle cost analysis that account for uncertainty and variability of the analysis inputs to assess the economic benefits of gas furnace and water heater design combinations. This study accounts not only for the equipment cost but also the cost of installing, maintaining, repairing and operating the equipment over its lifetime.

Overall, this study which is focused on U.S. single-family new construction households that install gas furnaces and storage water heaters, finds that installing a condensing or power vent water heater together with condensing furnace is the most cost-effective option for the majority of these houses. Furthermore, the findings suggest that the new construction residential market could be a target market for the large-scale introduction of a combination of condensing or power vent water heaters with condensing furnaces.

Keywords

Residential; Gas appliances; Venting; New construction; Life-cycle cost analysis; Water Heating; Space Heating

1. Introduction

Residential space and water heating accounts for 39% of total residential primary energy consumption and 91% of all residential gas¹ consumption in the United States (4.9 quads in 2007) (U.S. Department of Energy 2009a). A gas furnace and a gas water heater is the most common combination of space and water heating equipment in existing single-family homes, where on average about half of all new homes (about 0.8 million from 1999-2007) are installed with this combination (U.S. Department of Energy 2005; U.S. Department of Commerce 2008).

In new single-family construction, the builder, contractor, or the architect are primarily responsible for the selection of space and water heating equipment (Ashdown et al. 2004). Several criteria play role in the equipment choice: lowest first cost (equipment and installation cost), familiarity with equipment by installers, code acceptability, and home buyer preference (Ghent and Keller 1999). As consumers' interest grows for equipment choices that offer significant long term energy cost savings and reduce environmental impact, builders can find it beneficial to market their homes with more efficient equipment. In addition to consumer pressure, the federal Energy Star program and state's building codes are

¹ Includes both natural gas and liquid petroleum gas (LPG).

providing incentives and promoting more efficient equipment. Despite this, two factors contribute to the routine failure to select both more efficient furnaces and more efficient water heaters: lack of availability of condensing water heaters and lack of awareness of the economic impacts of the different combinations of space and water heating equipment.

This study applies a life-cycle cost (LCC) analysis² to calculate the economic advantages and disadvantages to consumers, comparing alternative gas furnace and water heater combinations installed in new single-family homes. In the past, the U.S. Department of Energy (DOE) has performed separate LCC analysis on residential furnaces and on water heaters (Lekov 2006; Lekov 2000). However, little research has been performed to assess the economics of gas space and water heating equipment combinations regionally and nationally. This study uses data from recent analyses by DOE that examine the energy savings and economic benefits at the household level for six selected furnace and water heater combinations that include equipment currently available and promoted by the Energy Star program. The study also includes a National Impact Analysis (NIA) to estimate the national energy savings and the national economic impacts from installing different gas furnace and water heater combinations in new homes.

2. U.S. Space Heating and Water Heating Market Characterization

The U.S. space heating and water heating market differs significantly from other major markets (e.g. Europe or Japan). The U.S. market is dominated by air distribution systems and storage type water heaters, whereas other major markets are dominated by hydronic and heat pump systems.

2.1 Space Heating

Central heating systems (air distribution and hydronics) in the United States account for 82% of residential heating equipment stock in 2001: 92% of single family households built from 1980 to 2001 (U.S. Department of Energy 2001) and 98% of all single family new construction built during 1997-2007 (U.S. Department of Commerce 2008). Most of the remaining heating systems are direct heating equipment (room heaters, wall furnaces, fireplaces, etc.). The U.S. central space heating market is dominated by forced air furnaces (85% of the stock and 97% of all single family new constructions built during 1997-2007), while hydronics accounts for a smaller fraction (15% of stock and 3% of all single family new construction built during 1997-2007). Table 1 shows the fraction of heating systems in single-family households by fuel type. These heating systems show significant regional differences. For example, based on U.S. Census Regions (U.S. Department of Commerce 2009), almost all hydronic systems are located in the northeastern U.S. (census region 1), while electric heating equipment dominates the southern U.S. (census region 3) (see Table 1).

² An LCC is a cost/benefit analysis over the lifetime of the equipment from a consumer perspective.

Table 1 U.S. space heating market for single-family households (built from 1980-2001)

Heating System Types	Fuel	Region 1 (NorthEast)	Region 2 (MidWest)	Region 3 (South)	Region 4 (West)	National
Central Air	Gas	45%	91%	45%	71%	59%
	Electricity ^c	13%	6%	48%	15%	29%
	Oil	8%	0%	0%	0%	1%
	Other	3%	0%	0%	1%	0%
Hydronics	Gas	5%	0%	0%	1%	1%
	Oil	12%	0%	0%	0%	1%
DHE ^a , Other ^b	Electricity	9%	2%	2%	5%	3%
	Gas	0%	0%	3%	2%	2%
	Oil	2%	0%	0%	0%	0%
	Other	2%	0%	1%	5%	2%

^a Direct Heating Equipment (DHE).

^b Other includes solar, wood, no heating

^c Electric resistance and heat pumps.

(Source: RECS 2001 Survey)

2.1 Water Heating

The current stock of residential water heating equipment is almost entirely storage water heaters. (U.S. Department of Energy 2001) The rest of the stock (about 1%) includes all other water heating categories: tankless water heaters, combined space heating and water heating appliances³, solar water heating, district heating and others. As shown in Table 2, storage water heaters in single-family households built after 1980 are about 60% gas-fired, 38% electric, 1% are fuel oil, and 1% are combination or other⁴. Regionally, gas-fired water heating is dominant in all regions except in the South.

Table 2 U.S. Water heating market for single-family households (built after 1980)

Fuel	Region 1 (NorthEast)	Region 2 (MidWest)	Region 3 (South)	Region 4 (West)	National
Gas	48%	81%	46%	80%	60%
Electric	34%	19%	54%	19%	38%
Oil	10%	0%	0%	0%	1%
Combination/Other	8%	0%	0%	0%	1%

Source: RECS 2001 Survey

Availability of natural gas is a major driver in the selection of the heating and water heating equipment. Newly constructed homes with natural gas access in almost all cases are equipped with gas-fired furnaces and water heaters. Regionally the gas households are mostly in the Northern and Western parts of U.S.A. As shown in Figure 1, for single family houses built after 1980, the dominant combination of water heating and space heating is a gas furnace with a gas water heater (53%) followed by an electric furnace or heat pump and electric water heater (26%). (U.S. Department of Energy 2001)

³ Combined space heating and water heating appliances are integrated units that provide both space heating and domestic hot water and are not related to the furnace/water heater combinations evaluated in this study.

⁴ Water heater fuel types in the single-family market segment are about the same as the national.

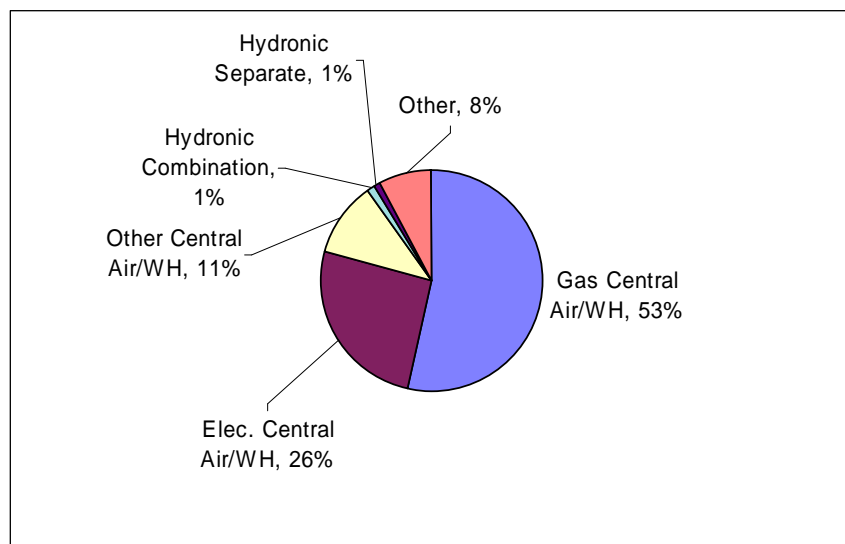


Fig. 1 U.S. space heating and water heating market for single-family households (built from 1980-2001, RECS 2001)

This paper focuses on households that have both a gas furnace and a gas storage water heater. This market is projected to maintain its dominance into the future (U.S. Department of Energy 2009a). Thus, new single-family construction represents a significant and important market for the introduction of higher energy-efficient gas space heating and water heating technologies.

3. U.S. Gas Space Heating and Gas Water Heating Technology Characterization

Gas furnaces and water heaters are often distinguished by whether they use condensing or non-condensing technology. Gas non-condensing water heaters can be further distinguished between natural draft and power vent technologies.

A typical non-condensing gas furnace has an efficiency rating of about 80 percent annual fuel utilization efficiency (AFUE), while a condensing furnace has an efficiency rating at or above 90-percent AFUE. In 2007, the most common furnace installed for replacement and in new construction⁵ was a non-condensing gas furnace (approximately 63%) (Air-Conditioning, Heating, and Refrigeration Institute 2008a).

The efficiency of water heaters, depending on the rated volume and other design considerations, ranges from 0.50 to 0.62 energy factor (EF) for non-condensing natural draft, from 0.60 to 0.70 EF for non-condensing power vent, and above 0.75 EF for condensing water heaters. In 2007, nearly all gas water heaters installed are non-condensing, with approximately 98% natural draft and 2% power vent models (Air-Conditioning Heating and Refrigeration Institute 2008b). There are currently no shipments of residential condensing water heaters⁶, but there are prototype models available and condensing water heaters are included in the current Energy Star program (Energy Star 2008).

The electricity and venting installation requirements are different for the various furnace and water heater designs. Condensing and non-condensing furnaces as well as non-condensing power-vent water heaters and condensing water heaters require electricity to

⁵ Data on the share in new construction only is not available.

⁶ There are some “non-residential” condensing models that are being used in residential applications (e.g., A.O. Smith’s Vertex models)

operate, while non-condensing natural-draft water heaters usually do not. Also, non-condensing natural-draft equipment is typically vented vertically through the roof, while condensing and non-condensing power-vent equipment is vented horizontally through the wall.

Figure 2 illustrates typical venting configurations. Identifying venting configurations is important because the venting system represents a significant fraction of the total installed cost and differs significantly for different furnace and water heater combinations. Configuration D is the least expensive, since it uses plastic venting materials (compared to more expensive steel venting materials required in non-condensing furnaces and non-condensing natural draft water heaters) and shorter vent lengths. Configuration A uses a single vent system for both appliances. Configurations B and C are the most expensive because of the need to apply two different venting types.

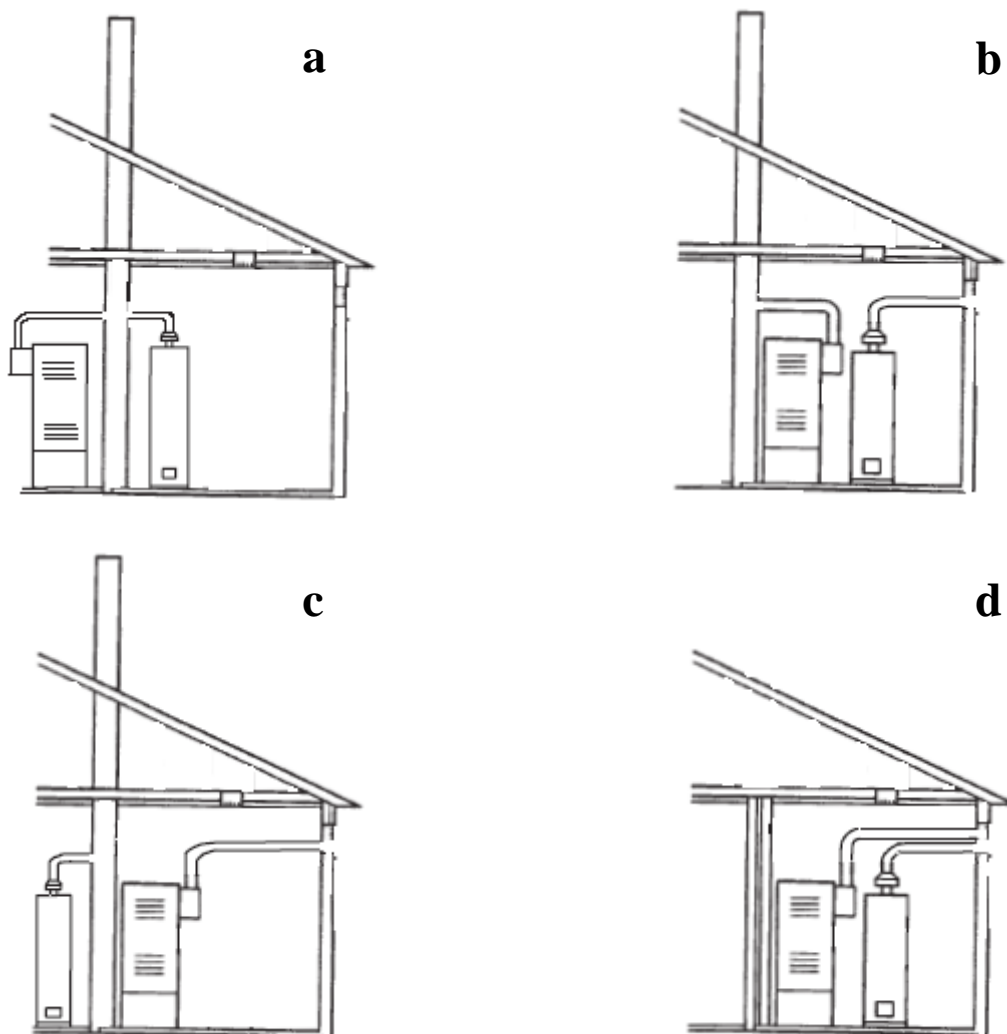


Fig. 2 Four gas furnace and gas water heater venting configurations: (a) gas furnace and water heater vented through the roof; (b) gas furnace vented through the roof and gas water heater vented through the sidewall; (c) gas furnace vented through the sidewall and gas water heater vented through the roof; and (d) gas furnace and gas water heater vented through the sidewall

4. Methodology

This study assessed the energy savings and economics of the elected water heater and furnace configurations installed in new homes. The LCC analysis addressed both the cost of buying and installing a furnace or water heater, and the operating costs summed over the lifetime of the equipment, discounted to the present. Figure 3 shows the LCC analysis components. The lighter colored boxes represent the required inputs, the darker colored boxes represent the values calculated by these inputs, and the darkest colored boxes show the analysis results. The total installed cost is the sum of the price to the consumer of the equipment and the cost to install the equipment. The operating cost takes in account the energy consumption of the furnace and the water heater and the price of energy as well as the repair and maintenance costs. The total installed cost and the operating cost are used to calculate the payback periods and the life-cycle cost of each of the selected water heater and furnace options.

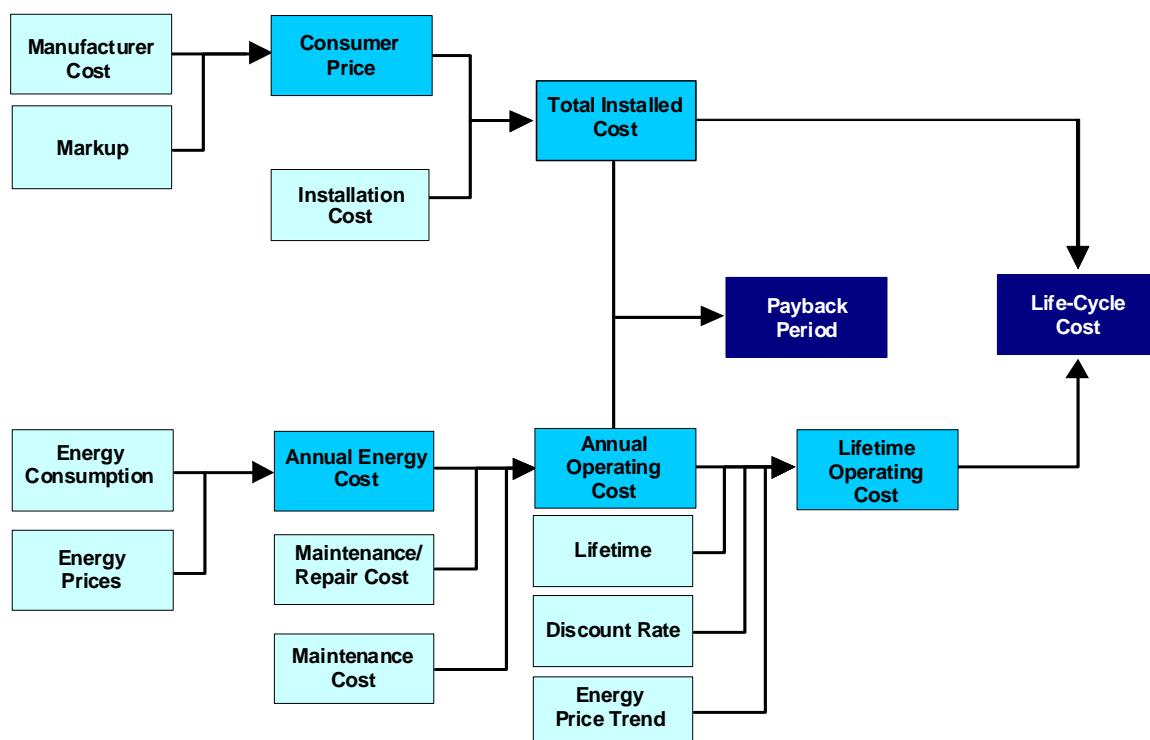


Fig. 3 Life-Cycle Cost Analysis Flowchart

To account for the uncertainty and variability of the inputs to the LCC analysis, we applied Monte Carlo⁷ simulations, with many of the variables used in the calculations (e.g., discount rate, energy prices, equipment lifetime) represented as distributions of values and with probabilities (weighting) attached to each value (Lutz et al. 2000). The LCC analysis estimated furnace and water heater energy consumption under field conditions for a sample of households selected from the 2001 Residential Energy Consumption Survey (RECS2001)

⁷ The Monte Carlo method utilizes computational algorithms that rely on repeated random sampling to compute results. In this study, the Monte Carlo analysis is performed using Crystal Ball, add-on software to MS Excel. The results are based on 10,000 samples per Monte Carlo simulation run.

(U.S. Department of Energy 2001). We selected those households having both a gas water heater and a gas furnace⁸ and built in or after 1980.⁹

Table 3 shows the six gas furnace and water heating options. These options are ordered first from non-condensing to condensing furnaces and then by increasing efficiency for water heater design options. Overall, Option 1 represents the least efficient furnace and water heater combination and Option 6 represents the most efficient combination. The efficiency values used in the calculations were mostly based on commonly available models (U.S. Department of Energy 2007). The fact that Options 5 and 6 use venting configuration D is significant, since this configuration is the least expensive one.

Table 3 Gas furnace and gas water heater options

Option	Furnace Type	Gas Water Heater Type (EF at 40 gallon rated volume ^a)	Venting Configurations
1	Non-condensing (80%)	Non-Condensing Natural Draft (0.59)	Configuration a
2		Non-Condensing Power Vent (0.64)	Configuration b
3		Condensing (0.80 ^a)	
4	Condensing (90%)	Non-Condensing Natural Draft (0.59)	Configuration c
5		Non-Condensing Power Vent (0.64)	Configuration d
6		Condensing (0.80 ^b)	

^a Efficiency at 40 gallon capacity tank. Efficiency varies with capacity.

^b Efficiency based on current Energy Star efficiency levels.

To calculate the relative advantages and disadvantages of an option, we assessed the life-cycle cost savings and the payback period (PBP) by comparing Option 1, which is the most common, to higher efficiency options (2-6). Option 1 serves as the reference to which the other options are compared.

In addition to a national LCC analysis, we performed a regional LCC analysis for the four U.S. Census regions (U.S. Department of Commerce 2009). The regional analysis accounts for significant energy use variations due to climate conditions (particularly for furnaces) as well as for regional differences in household characteristics, energy prices and other variables. To account for climate differences within the regions, we divided Census regions 3 and 4 into warm and cold sub-regions (below and above 3000 heating degree days (HDD)). To account for the differences in regional new construction trends, we calculated weights that represent the percentage of new single-family homes in each region (see Table 4). We assumed that these weights represent homes that are built with both a gas furnace and gas water heater, since almost all homes built with a gas furnace also have a gas water heater. The regional weights were then subdivided for regions 3 and 4 based on the number of households with gas furnace and water heater in RECS2001.

⁸ RECS does not distinguish between households that have weatherized gas furnaces (which are not included in this analysis) and non-weatherized gas furnaces.

⁹ This is done to get a sample of households which approximates current new construction practices and allows us to generate a sufficiently large sample (447 household records representing 11.6 million households) for the analysis.

Table 4 New Construction Households by Region

Region Labels	Census Region	HDD Criteria	Average Number of Single-family Homes Built with a Gas Furnace in 1999-2007 ^a		Regional Weights in National Analysis
			'000/year	%	
Region 1	Northeast	ALL	69.5	8.0	8.0%
Region 2	Midwest	ALL	231.4	26.5	26.5%
Region 3-Cold	South	>3000	278.8	31.9	20.4%
Region 3-Warm		<3000			11.5%
Region 4-Cold	West	>3000	293.6	33.6	16.3%
Region 4-Warm		<3000			17.3%
National Totals			873.2	100.0	100%

^a U.S. Department of Commerce 2008

The analysis considered the period from initial furnace and water heater installation to the end of the lifetime of the furnace. Given the lifetime distributions for the water heater and the furnace, about 95% of the time one or more additional water heater(s) would be installed during the lifetime of the furnace. In these cases, the total installed cost of the replacement water heater was added to the operating cost as an annualized expense from the time of the replacement to the end of the furnace lifetime. Figure 4 illustrates how this calculation is included in the overall LCC analysis. The example assumes that the furnace lifetime is 20 years and the lifetime of the first water heater and the replacement water heater is 12 years. Therefore, the annualized expense for purchase and installation of the replacement water heater is one twelfth of the total installed cost.

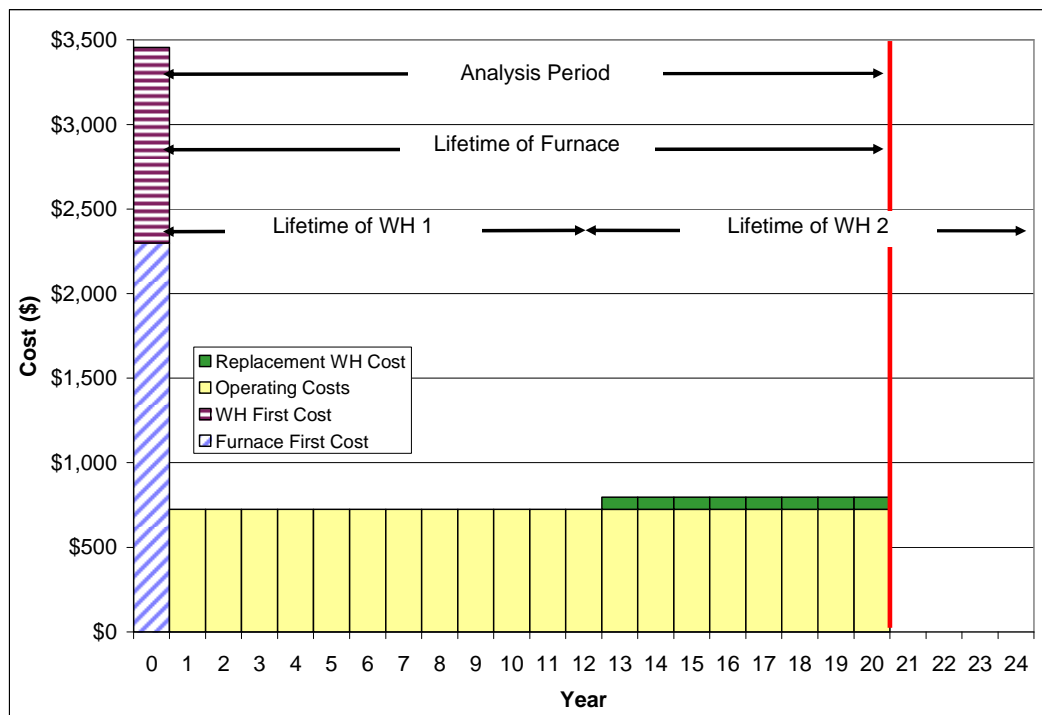


Fig. 4 Example of non-discounted components of life-cycle cost by year

For the NIA analysis we calculated the NES and NPV for gas furnaces and water heaters installed in new construction and shipped over a 20-year period (2010-2030) using the average LCC results for the installed cost, maintenance and repair cost and the annual energy consumption. We measured the impacts of each option against a base case, which

reflects the current market share¹⁰ of the different furnace and water heater combinations. This base case reflects the fact that many builders are already installing products at higher efficiencies (especially condensing furnaces). We modeled the annual shipments in new construction by using the projected number of housing units built and the market share of gas furnaces and water heaters installed in new homes. We also accounted for the useful service life of both appliances to estimate how long they are likely to remain in stock.

5. Analysis

5.1 LCC and PBP Analysis

The total installed cost includes the consumer price and the installation cost, which includes labor, overhead, and any miscellaneous materials and parts. The operating cost included the energy expenditures and the repair and maintenance costs as well as the total installed cost of a replacement water heater. We discuss each of these inputs below.

5.1.1 Consumer Price

US DOE research derives the consumer price based on manufacturer cost and contractor/builder and distributor markups for the gas furnace and the gas water heater (U.S. Department Energy 2009; U.S. Department of Energy 2007).^{11,12} Manufacturer costs vary by rated volume for water heaters and by heating capacity and blower size for furnaces. The incremental cost of a power vent water heater compared to a standard water heater includes the cost of additional components (blower, electronic ignition). The manufacturer cost of a condensing water heater includes the cost of changes to the heat exchanger and the tank. The analysis used contractor/builder and distributor markups to transform the manufacturer costs into a consumer price. The markup methodology assumes lower overall markup for higher efficiency equipment (condensing furnaces and water heaters and power vent water heaters), because some distribution costs do not increase with increased efficiency.¹³ Table 5 shows the manufacturer costs and the applicable markups for furnace and water heater at representative capacities as used to derive the consumer prices used in the LCC analysis.

¹⁰ There are no disaggregated shipments data for new construction homes. We estimated the market shares in current installations based on 2007 Air-Conditioning, Heating, and Refrigeration Institute (AHRI) total shipments data (Air-Conditioning Heating and Refrigeration Institute 2008a; Air-Conditioning Heating and Refrigeration 2008b). We then adjusted these shares to reflect the fact that a higher fraction of new homes is located in South and West regions, which have a lower penetration of condensing furnaces than the nation as a whole (U.S. Department of Energy 2007).

¹¹ DOE's research used a reverse-engineering approach to obtain the manufacturer's costs.

¹² The consumer prices (particularly for residential furnaces as well as for condensing water heaters) are not commonly available. Space heating and water heating equipment are sold through several different distribution channels that have different price structures. To avoid these uncertainties we derived the consumer prices using the manufacturer cost and markup multipliers.

¹³ The lower overall markup cost for higher efficiency equipment is explained in the US DOE 2006 Furnace and Boiler Rulemaking TSD (U.S. Department of Energy 2007).

Table 5 Consumer price by option for typical gas furnace and gas water heater (2007\$)

Option	Furnace (75 kBtu/hr)		Water Heater (40 gal)		Total Consumer Price*
	Manufacturing Costs	Average Markups	Manufacturing Costs	Average Markups	
1	\$413	3.37	\$160	2.56	\$1,803
2	\$413	3.37	\$276	2.34	\$2,038
3	\$413	3.37	\$425	2.23	\$2,340
4	\$610	3.00	\$160	2.56	\$2,238
5	\$610	3.00	\$276	2.34	\$2,473
6	\$610	3.00	\$425	2.23	\$2,775

* Consumer prices in this table may not add up exactly to manufacturing cost multiplied by average markup due to rounding.

5.1.2 Installation Cost

The installation cost for each of the options is in Table 6. The installation cost values comes from US DOE research based on RSMMeans cost estimates (U.S. Department of Energy 2009b). The installation cost includes labor and materials for the gas furnace and water heater. The basic installation includes adding a gas line branch, water piping and condensate drain for water heaters and air-distribution connections and electrical components for furnaces, and the cost of locating and setting up the units. The only difference in basic installation cost between condensing and non-condensing equipment is the difference in cost of withdrawing the condensate via a horizontal plastic vent compared to withdrawing the exhaust via a vertical metal vent. We considered three different vent system installation costs: Option 1 used a common vent through the roof; Options 2, 3 and 4 used a combination of vertical metal vent and horizontal plastic vent; and Options 5 and 6 used plastic vent.¹⁴

Table 6 Installation costs for furnace and water heater options (2007\$)

Option	Venting Installation Configuration	Basic Installation		Venting		Total
		Furnace	Water Heater	Furnace	Water Heater	
1	Configuration A	\$451	\$340	\$829		\$1620
2	Configuration B	\$451	\$340	\$443	\$777	\$2011
3	Configuration B	\$451	\$347	\$443	\$777	\$2018
4	Configuration C	\$453	\$340	\$777	\$443	\$2013
5	Configuration D	\$453	\$340	\$213	\$213	\$1219
6	Configuration D	\$453	\$347	\$213	\$213	\$1226

The total installed cost includes the consumer price and the installation costs and is presented as a distribution of values (Appendix B, Fig 12). Table 7 shows the average total installed costs from that distribution. The incremental total installed cost represents the difference between Option 1 and each of the other options. Options 5 and 6, which feature a condensing furnace and power vent or condensing water heater respectively, have the lowest incremental total installed costs because their lower installation costs partially offsets the higher consumer price.

¹⁴ Options 5 & 6 assume the equipment location is close to the wall to avoid long vent runs. In all cases, the water heater and furnace were assumed to be installed close to each other.

Table 7 Average total installed costs furnace and water heater options (2007\$)

Option	Consumer Price ^a	Installation Cost	Total Installed Cost	Incremental Total Installed Cost
1	\$1,858	\$1,620	\$3,478	-
2	\$2,098	\$2,011	\$4,109	\$631
3	\$2,397	\$2,018	\$4,415	\$937
4	\$2,314	\$2,013	\$4,327	\$849
5	\$2,554	\$1,219	\$3,773	\$295
6	\$2,853	\$1,226	\$4,079	\$601

^a Consumer prices in this table are averages over the range of furnace and water heater capacities, not just the representative capacities in Table 5.

5.1.3 Heating Load and Hot Water Use

Energy consumption for both the furnace and the water heater comes from calculations that used DOE test procedure parameters (See Appendix C) (Lutz et al. 1999; Lutz et al. 2004). The house heating load (for furnaces) and the hot water use (for water heaters) used in the calculations vary for each sample household. Table 8 shows the house heating load and hot water use average and median values for the household sample by region (the resulting distribution of values is shown in Appendix B, Figures 13 and 14). The national average hot water use (57.9 gal) is higher than the average value for gas water heaters (49.9 gal) reported in the DOE water heater study (U.S. Department of Energy 2005) because the household sample for new construction includes only RECS households built from 1980 to 2001 not the entire stock. The new construction sample weights more toward warmer regions and the number of occupants per household is higher than the national average.

Table 8 House heating load and hot water use by region

		Region 1 (North East)	Region 2 (Mid West)	Region 3 Cold (South)	Region 3 Warm (South)	Region 4 Cold (West)	Region 4 Warm (West)	National
House Heating Load, MMBtu/y	Avg	49.0	54.2	39.5	17.7	48.1	18.8	39.4
	Med	45.7	51.4	35.3	14.5	41.6	13.5	35.6
Hot Water Use, gal/day	Avg	40.4	51.5	53.2	58.5	53.3	56.1	52.9
	Med	38.0	47.2	48.6	53.8	49.8	51.5	48.6

5.1.4 Operating Costs

The operating costs represent the costs paid by the consumer to operate and maintain or repair the furnace and the water heater over the lifetime of the equipment. The operating cost uses inputs from household energy consumption and energy prices. Average monthly energy prices were determined separately for the nine Census divisions and four large states based on 2006 EIA data, historical monthly EIA data, and 2006 U.S. Census Bureau population estimates (U.S. Department of Energy 2006a; U.S. Department of Energy 2006b; U.S. Department of Energy 2005; U.S. Department of Commerce 2006). The derived energy prices were matched to each individual household depending on its location. To arrive at prices in future years, we multiplied the 2006 average prices by the forecast of annual average price changes in AEO2009 (U.S. Department of Energy 2009a). Appendix A provides more details about the energy prices used in the analysis.

The furnace maintenance cost accounts for regular maintenance while no maintenance cost was associated with the water heaters. The analysis assumed that certain components of

both furnaces and water heaters might be repaired during the lifetime of the equipment (e.g. ignition device, blower motor, and power vent) (U.S. Department of Energy 2009b).¹⁵ Table 9 lists the repair cost of key components as used in the analysis.

Table 9 Gas furnace and gas water heater component repair cost and lifetime

	Component	Component Lifetime	Repair Cost (2007\$)	Applied to Option
Gas Furnace	Electronic Ignition	10	\$204	1,2,3,4,5,6
	Blower Motor	12	\$297	1,2,3,4,5,6
	Inducer Motor	15	\$297	1,2,3,4,5,6
Gas Water Heater	Pilot Light Ignition	10	\$162	1,4
	Electronic Ignition	15	\$204	2,3,5,6
	Power Vent	15	\$297	2,3,5,6

The operating cost accounts for the household annual energy consumption as well as for the maintenance and repair and is expressed as a distribution of values (Appendix B, Fig 15). Table 10 shows the average energy use and operating cost for the analyzed household sample. The operating cost savings reflect the difference between Option 1 and each of the other options. Option 6 has the lowest average operating cost and the highest annual fuel savings.

Table 10 Average energy use and operating costs (2007\$)

Option	Annual Gas Use	Annual Elec Use	Annual Maintenance/Repair Cost ^a	Avg Operating Cost	Avg Operating Cost Savings
	MMBtu/y	kWh/y	\$/y	\$	\$
1	64.89	433	\$178	\$14,917	-
2	63.06	503	\$202	\$14,802	\$116
3	59.47	493	\$227	\$14,195	\$722
4	59.86	369	\$178	\$13,869	\$1,049
5	58.03	438	\$202	\$13,753	\$1,164
6	54.45	428	\$227	\$13,146	\$1,771

^a Including water heater replacement if applicable.

Condensing water heaters on average show more fuel savings than condensing furnaces. This is due to the higher efficiency difference between non-condensing and condensing water heaters (about 37%) compared to the difference between non-condensing and condensing furnaces (about 13%).

5.1.5 Discount Rate

The LCC analysis discounted future operating costs to 2010 and summed them over the lifetime of the furnace. The discount rate used reflects after-tax real mortgage rates and on average equals 3.2% (U.S. Department 2007).

5.1.6 Lifetime

Lifetime estimates for furnaces and water heaters are shown in Table 11 (U.S. Department 2007) (U.S. Department of Energy 2008). In the analysis, lifetime is represented

¹⁵In the LCC analysis both the lifetime of the equipment and the component lifetime are presented as distributions. Therefore only households that have longer equipment lifetime encounter repair costs.

as a triangular probability distribution. The analysis uses the same lifetime for all furnace and water heater designs.

Table 11 Furnace and water heater lifetime

Product Class	Minimum	Average	Maximum
Gas Water Heater	6	12	18
Gas Furnace	10	20	30

5.2 National Impacts Analysis

The primary input parameters used in the National Impact Analysis (NIA) are discount rate, lifetime and energy prices along with the unit price, energy use and installation and repair costs from the LCC analysis. Figure 5 shows the projected new construction shipments of gas furnace and water heaters in 2010-2030, which is based on new housing completion projections from the 2008 Annual Energy Outlook (AEO 2008) (U.S. Department of Energy 2008). The estimated average fraction of new housing completions with gas furnaces and gas water heaters is 49.5% based on US Census data (Table 2) and data from the 2005 American Housing Survey (AHS) (U.S. Department of Commerce 2005).

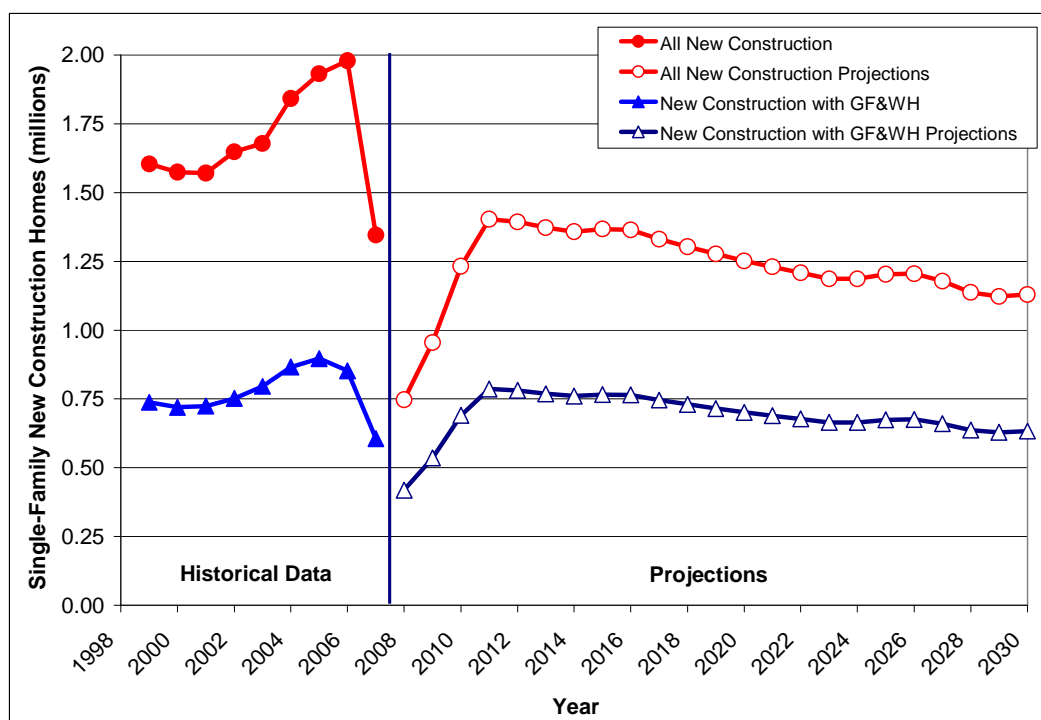


Fig. 5 New Construction Shipments (Historical from 1999-2007 and Projected from 2008-2030)

The NIA calculates national energy savings at the site level and then uses conversion factors from AEO 2008 to convert to primary energy use.¹⁶ NIA also includes the impact of the rebound effect (also called a take-back effect or offsetting behavior) which refers to increased energy consumption resulting from actions that increase energy efficiency and

¹⁶ Site energy is the amount of heat and electricity consumed on site by a building as reflected in utility bills. Primary energy is the raw fuel that is burned to create heat and electricity, such as fuel used to generate electricity at a power plant, plus other losses in producing and transporting the fuel and electricity.

reduce consumer costs.¹⁷ To account for the rebound effect, national energy savings are reduced 10% for water heaters and 15% for furnaces (U.S. Department of Energy 2009b; U.S. Department of Energy 2007).

6. Results

Table 12 shows the average total installed cost, operating cost, total LCC, and average LCC savings for the six options (the distribution of LCC savings is in Appendix B, Fig 16). Option 6 has the highest LCC savings (\$1,170), followed by Option 5 (\$869). Options 2 and 3 have negative LCC savings or increased costs.

Table 12 Average LCC and LCC savings (2007\$)

Option	Total Installed Cost	Operating Cost	Total LCC	LCC Savings
1	\$3,478	\$14,917	\$18,395	-
2	\$4,109	\$14,802	\$18,911	(\$516)
3	\$4,415	\$14,195	\$18,610	(\$215)
4	\$4,327	\$13,869	\$18,196	\$199
5	\$3,773	\$13,753	\$17,526	\$869
6	\$4,079	\$13,146	\$17,225	\$1,170

Note: Negative savings within parenthesis.

Figure 6 shows the percentage of all U.S. new construction households that would experience a positive LCC savings (net benefit) or negative LCC savings (net cost) compared to option 1 if they were to install a combination of gas furnace and water heater as in options 2-6. All options with a condensing furnace (Options 4-6) have net benefits for more than half of the households (52% for Option 4, 90% for Option 5, and 93% for Option 6), while Options 2 and 3 have net benefits for less than 50% of households (3% for Option 2 and 22% for Option 3).

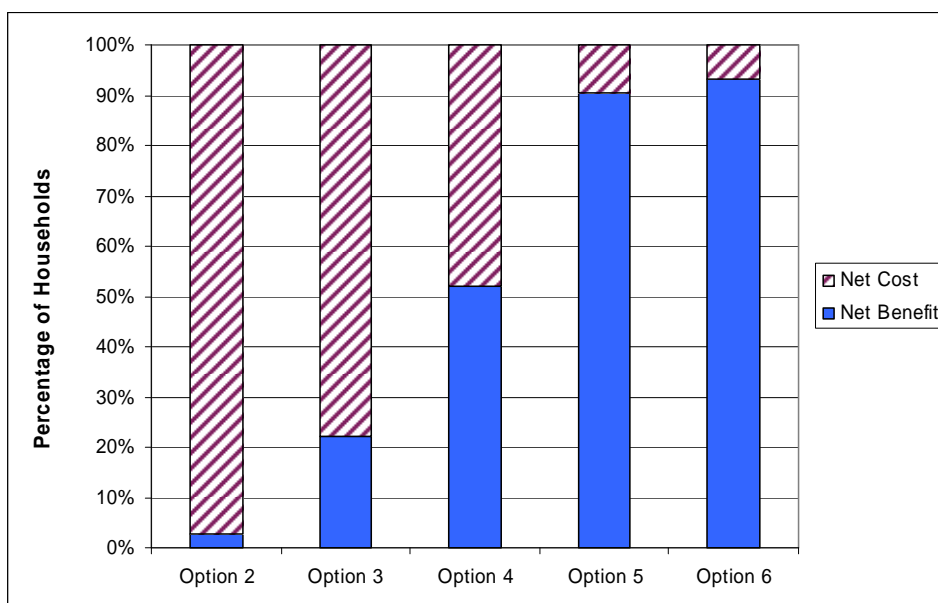


Fig. 6 LCC impacts for U.S. new construction households

¹⁷ The logic behind the rebound effect is that more energy efficient products lower the marginal cost of the end-use service relative to lower energy efficient products so consumers take some of the energy savings back in increased comfort or service.

Figure 7 shows the median and average payback period relative to Option 1. Options 5 and 6 have the lowest payback periods (median payback period of 3.8 and 4.9 years respectively). Options 3 and 4 have median paybacks of about 14-15 years, while Option 2 has median and average payback beyond the lifetime of the equipment.

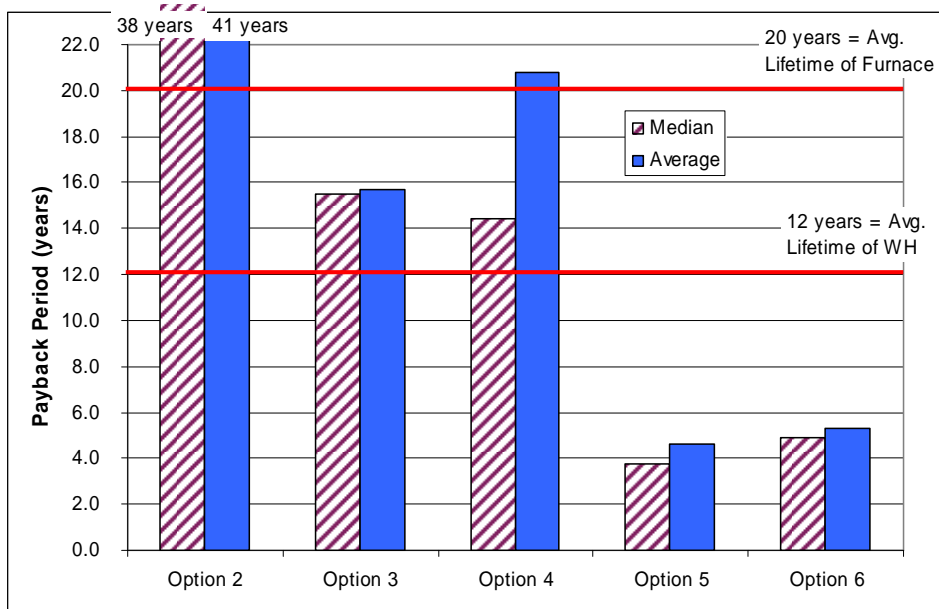


Fig. 7 Median and average household PBP

Table 13 shows the average LCC savings by region. The LCC savings vary by region because of the significant variations of the furnace heating load due to climate differences and regional energy prices. Option 6 shows the highest LCC savings for all regions. For regions above 3000 HDD (Region 1, 2, 3-Cold, and 4-Cold), which account for about two-thirds of the new construction homes, the average LCC savings for Option 6 are between \$1,263 and \$1,743. The average LCC savings drop to \$390 to \$532 for the regions below 3000 HDD (about one-third of new construction households). Option 5 is also cost-effective in all regions. In general, Option 4 show savings in cold climates, but not in warm regions. Option 2 and Option 3 are generally not cost effective (except Option 3 in Region 4-Cold).

Table 13 Average LCC savings by region (2007\$)^a

Option	Region 1 (NorthEast)	Region 2 (MidWest)	Region 3 Cold (South)	Region 3 Warm (South)	Region 4 Cold (West)	Region 4 Warm (West)
1	-	-	-	-	-	-
2	(\$494)	(\$514)	(\$472)	(\$524)	(\$452)	(\$632)
3	(\$197)	(\$241)	(\$121)	(\$260)	\$10	(\$473)
4	\$611	\$468	\$198	(\$394)	\$548	(\$323)
5	\$1,302	\$1,140	\$912	\$268	\$1,281	\$230
6	\$1,599	\$1,413	\$1,263	\$532	\$1,743	\$390

^a Values in parenthesis indicate negative numbers.

Table 14 shows the payback period by region for all options. In general, Options 6 and 5 have median payback periods less than 8 years in all regions, and less than 5 years in regions above 3000 HDD. Options 3 and 4 offer median paybacks between 10 and 16 years in regions above 3000 HDD, but median paybacks rise in regions below 3000 HDD to 15 to

19 for Option 3 and above the lifetime for Option 4. Option 2 has median and average paybacks beyond the lifetime of either equipment in all regions.

Table 14 Payback period by region (years)

Option	Region 1 (NorthEast)		Region 2 (MidWest)		Region 3 Cold (West)		Region 3 Warm (West)		Region 4 Cold (South)		Region 4 Warm (South)	
	Avg	Med	Avg	Med	Avg	Med	Avg	Med	Avg	Med	Avg	Med
1	-	-	-	-	-	-	-	-	-	-	-	-
2	34	34	39	39	34	33	35	42	32	33	64	63
3	14	14	16	16	15	15	15	16	13	13	19	19
4	10	11	11	12	14	16	35	43	12	12	36	37
5	2.8	2.9	3.2	3.4	3.7	3.9	6.8	7.2	2.9	3.1	7.8	7.9
6	4.0	4.0	4.4	4.5	4.8	4.8	6.9	7.0	3.9	4.0	7.6	7.7

The most cost-effective option (i.e., the lowest total LCC) for each household in each region is shown in Figure 8. Option 6 has the lowest total LCC for 83% of all households, except for Region 4-Warm, where this fraction is approximately 65%.

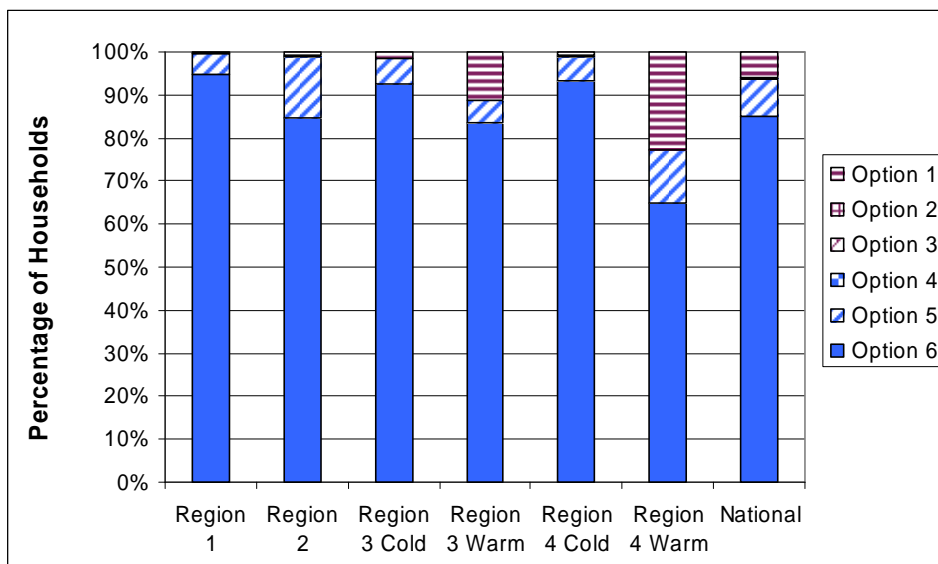


Fig. 8 Options with lowest total LCC by region

Condensing water heaters, included in Options 3 and 6, are not yet available for residential storage tank applications. Figure 9 shows the most cost-effective for each household in each region, excluding condensing water heaters (i.e. Options 3 and 6). Option 5, which combines condensing furnace and power vent water heater, is the option with the lowest LCC for more than 90% of the households nationally and more than 95% of the households in all regions except regions 3-Warm and 4-Warm. Power vent technology is readily available and currently maintains about a 2% share of the gas water heater market.

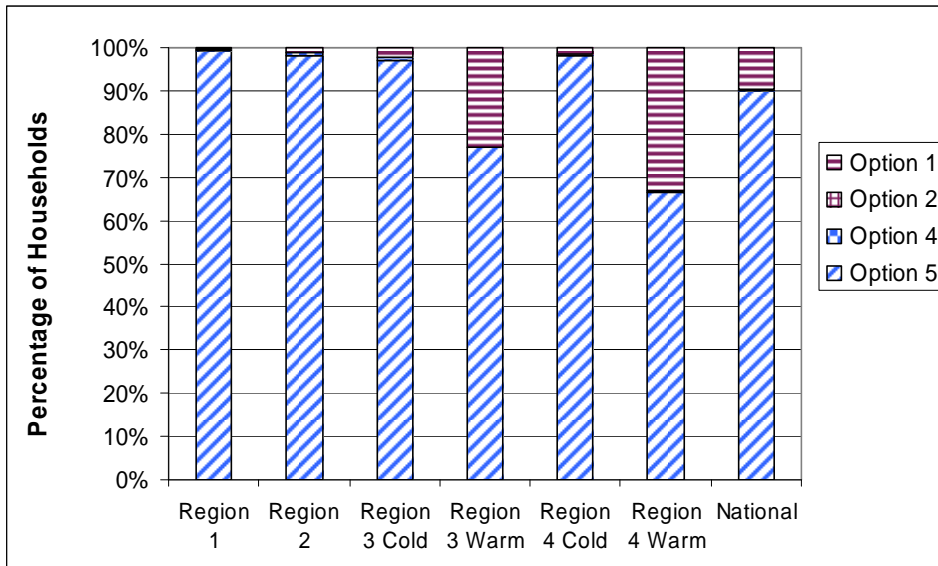


Fig. 9 Options with lowest total LCC (excluding condensing water heaters)

The net energy savings (NES) and net present value (NPV) results for the six options are shown in Figure 10. For the nation, Option 6 has the highest NES (1.5 quads) and NPV (\$8.0 billion) over the 2010-2030 period. Option 5 also has positive NES (0.7 quads) and NPV (\$5.0 billion). Option 4 has a positive NES (0.6 quads) and NPV (\$0.1 billion). Options 2 and 3 have positive NES results, but negative NPV results. The positive NPV for Options 5 and 6 reflects their lower installation cost compared to Options 2, 3 and 4 and their higher operating cost savings.

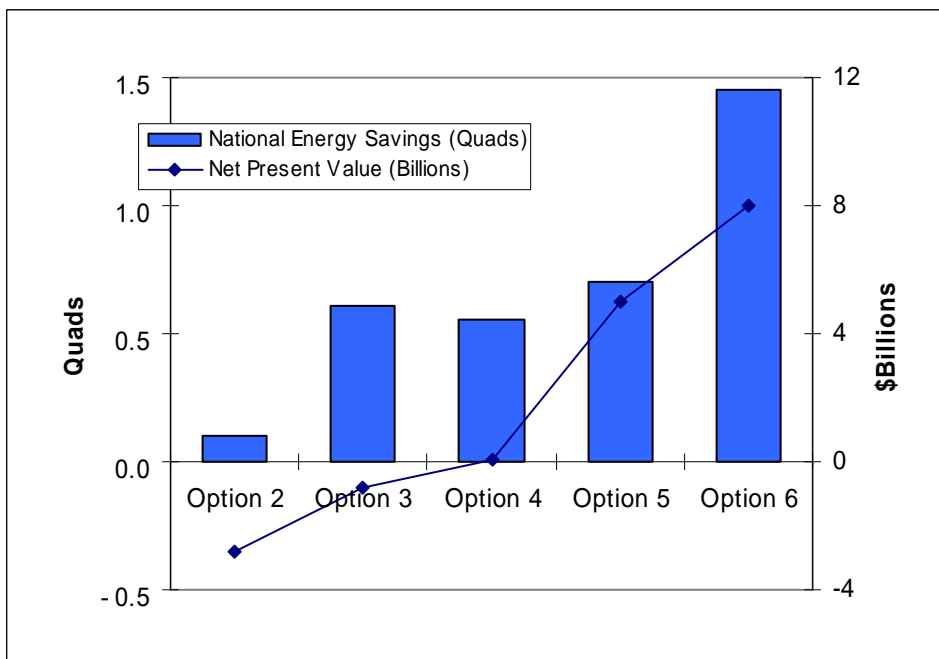


Fig. 10 NES and NPV Results

7. Conclusion

For the U.S. single family housing market the dominant combination of water heating and space heating is a gas furnace with a gas water heater. The results for the new construction segment of the single family market show that Options 4, 5 and 6 (condensing furnace with any type of water heating) show positive LCC savings. The LCC savings are very significant for Options 5 and 6, which combine a condensing furnace with either a power vent or condensing water heater. Over 90% of the natural-gas-using new single-family homes in the U.S. would benefit from installing either Options 5 or 6. These two options also have the lowest average payback (3.8 years for Option 5 and 4.8 years for Option 6). In all U.S. regions, Options 5 and 6 have the highest average LCC savings and the lowest average payback.

Option 6 is the most cost effective technology (with lowest LCC) for 83% of all U.S. households. Option 6 also has the lowest LCC for 80% or more of households in all regions, except for Region 4-Warm, where this fraction is about 65%. Option 5 is the second most cost-effective technology. Option 5 is attractive because it uses the power vent water heater technology which already has about 2% market share.

The national impact analysis shows that both Options 5 and 6 have significant potential national energy savings and economic benefits over the 2010 to 2030 period. In particular, Option 6 shows very large NPV greater than \$8 billion due to lower installation costs and higher operating cost savings. Together these more than offset the higher consumer price for the equipment.

Presently, in the new construction market, the choice of furnace and water heater type is primarily driven by first cost considerations and limited availability of power vent and condensing storage-tank water heaters. This study suggests that homebuyers in most of the U.S. would benefit from the installation of higher efficiency space and water heating technologies. It also shows that important benefits may be overlooked when policy analysts evaluate the impact of space and water heating equipment separately.

The economic results indicate that significant energy savings and consumer benefits may result from large-scale introduction of condensing or power vent water heaters combined with condensing furnaces in U.S. residential new construction.

8. Future Work

The study was limited by factors that could be addressed in future research. Some of the potential future directions are:

- Broaden the study to cover replacement situations as well as other residential building types (i.e., multifamily and mobile home).
- Broaden the scope to include gas tankless water heaters, variable-fire condensing tankless combined space/water heaters, solar water heaters, combined solar space/water heater, electric water heaters and furnaces, which include heat pump designs, and combination appliances.¹⁸

¹⁸ Shipments of tankless water heaters are increasing significantly and are projected to be around 25% of the gas water heating market by 2015. DOE also projects a larger market for heat pump water heaters (U.S. Department of Energy 2009b)

Acknowledgements

The authors would like to thank Steven Meyers (LBNL), Jim Lutz (LBNL) and Lisa Thompson (LBNL) for providing valuable inputs and reviewing the paper.

References

- Air-Conditioning, Heating, and Refrigeration Institute (2008a). Industry statistical profile: Gas warm air ventral furnaces by AFUE. Air-Conditioning, Heating, and Refrigeration Institute. http://www.ahrinet.org/Content/Furnaces_609.aspx. Accessed 7 August 2008.
- Air-Conditioning, Heating, and Refrigeration Institute (2008b). Air-conditioning, heating, and refrigeration shipments data. Air-Conditioning, Heating, and Refrigeration Institute. http://www.ahrinet.org/Content/MonthlyShipmentReports_375.aspx. Accessed 7 August 2008.
- Ashdown, B.G, D. Bjornstad, G Boudreau, M. Lapsa, S. Schexnayder, B. Shumpert, and F. Southworh. (2004). Heat pump water heater technology: Experiences of residential consumers and utilities. Oak Ridge National Laboratory, Report No. ORNL/TM-2004/81. <http://www.ornl.gov/~webworks/cpppr/y2005/rpt/120517.pdf>. Accessed 7 August 2008
- Energy Star (2008). Energy Star Residential Water Heaters: Final criteria analysis. http://www.energystar.gov/index.cfm?c=new_specs.water_heaters. Accessed 7 August 2008
- Ghent, P. and C. Keller (1999). A comprehensive review of market research on solar water heaters. National Renewable Energy Laboratory, Berkeley, CA. Report No. NREL/SR-550-27123. <http://www.nrel.gov/docs/fy00osti/27123.pdf>. Accessed 7 August 2008
- Lekov, A., V. Franco, S. Meyers, J. McMahon, M. McNeil, and J. Lutz. (2006). Electricity and natural gas efficiency improvements for residential gas furnaces in the U.S. In the proceedings of the 4th International Conference on Energy Efficiency in Domestic Appliances and Lighting (EEDAL 06). June 21-23, 2006. London, England. Report No. LBNL-59745. <http://www-library.lbl.gov/docs/LBNL/59745/PDF/LBNL-59745.pdf>. Accessed 7 August 2008
- Lekov, A., J. Lutz, X. Liu, C. Dunham-Whitehead, and J. McMahon. (2000). Determining benefits and costs of improved water heater efficiencies. In the proceedings of the 35th Intersociety Energy Conversion Engineering Conference. July 24-28, 2000. Las Vegas, NV. Report No. LBNL-45618.
- Lutz, J., C. Dunham-Whitehead, A. Lekov, and J. McMahon. (2004). Modeling energy consumption of residential furnaces and boilers in U.S. homes. Lawrence Berkeley National Laboratory, Report No LBNL-53924. <http://repositories.cdlib.org/cgi/viewcontent.cgi?article=2392&context=lbln>. Accessed 7 August 2008.
- Lutz, J., C. Whitehead, A. Lekov, G. Rosenquist, and D. Winiarski. (1999). WHAM: Simplified tool for calculating water heater energy use. ASHRAE Transactions, 105(2): 1005-1015.

- Lutz, J.D., X. Liu, A. Lekov, C. Dunham-Whitehead, J. McMahon. (2000). A Monte Carlo approach to the calculation of energy consumption for residential gas-fired water heaters. In the proceedings of the American Society of Heating, Refrigeration, and Air-Conditioning Engineers. June 24 - 28, 2000. Minneapolis, MN.
- U.S. Department of Commerce - Bureau of the Census (2009). Census regions and divisions of the United States. http://www.census.gov/geo/www/us_regdiv.pdf. Accessed 8 January 2009.
- U.S. Department of Commerce - Bureau of the Census (2008). Characteristics of new housing. <http://www.census.gov/const/www/charindex.html>. Accessed 7 August 2008.
- U.S. Department of Commerce - Bureau of the Census (2006). Population estimates. <http://www.census.gov/popest/estimates.php>. Accessed 7 August 2008.
- U.S. Department of Commerce - Bureau of the Census (2005). American housing survey for the United States in 2005. <http://www.census.gov/hhes/www/ahs.html>. Accessed 7 August 2008.
- U.S. Department of Energy (2009a). Annual energy outlook 2009 with projections to 2030 Early Release. Energy Information Administration, Washington, DC. Report No. DOE/EIA-0383(2009). <http://www.eia.doe.gov/oiaf/aeo/>. Accessed 7 January 2009.
- U.S. Department of Energy (2009b). Preliminary technical support document: Energy efficiency standards for consumer products: Heating products. Energy Information Administration, Washington, DC. http://www1.eere.energy.gov/buildings/appliance_standards/residential/water_pool_heaters_prelim_tsd.html. Accessed 7 January 2009.
- U.S. Department of Energy (2008). Annual energy outlook 2008 with projections to 2030. Energy Information Administration, Washington, DC. Report No. DOE/EIA-0383(2008). <http://www.eia.doe.gov/oiaf/aeo/>. Accessed 7 August 2008.
- U.S. Department of Energy (2007). Technical support document: Energy efficiency standards for consumer products: Residential furnaces and boilers. Energy Information Administration, Washington, DC. http://www1.eere.energy.gov/buildings/appliance_standards/residential/fb_tsd_0907.html. Accessed 7 August 2008.
- U.S. Department of Energy (2006a). Natural Gas Navigator. Energy Information Administration. http://tonto.eia.doe.gov/dnav/ng/ng_pri_sum_dcu_nus_m.htm. Accessed 7 August 2008.
- U.S. Department of Energy (2006b). Form EIA-861: Annual electric utility data. Energy Information Administration. <http://www.eia.doe.gov/cneaf/electricity/page/eia861.html>. Accessed 7 August 2008.

U.S. Department of Energy (2005). 2005 State energy consumption, price, and expenditure estimates (SEDS). Energy Information Administration.
http://www.eia.doe.gov/emeu/states/_seds.html. Accessed 7 August 2008.

U.S. Department of Energy (2001). Residential energy consumption survey: Household energy consumption and expenditures 2001.
<http://www.eia.doe.gov/emeu/recs/recs2001/publicuse2001.html>. Accessed 18 May 2005.

APPENDIX A: ENERGY PRICES

The energy use of furnaces and to a lesser extent water heaters varies by month. In general, U.S. monthly energy prices also vary significantly by month. To more accurately capture the annual energy cost used by the households, this analysis uses regional monthly energy prices instead of annual average energy prices.

The regional monthly energy prices are derived from historical monthly energy prices (U.S. Department of Energy 2006a; U.S. Department of Energy 2006b; U.S. Department of Energy 2005; U.S. Department of Commerce 2005) and projected into the future using AEO 2009 annual regional energy price projections (U.S. Department of Energy 2009b). As an example, Figure 11 shows the monthly natural gas price forecast for 2010 for the nine Census Divisions and four large states. Using monthly prices results in lower operating costs, because most consumption occurs in the winter when the natural gas prices are lower compared to the average annual prices.

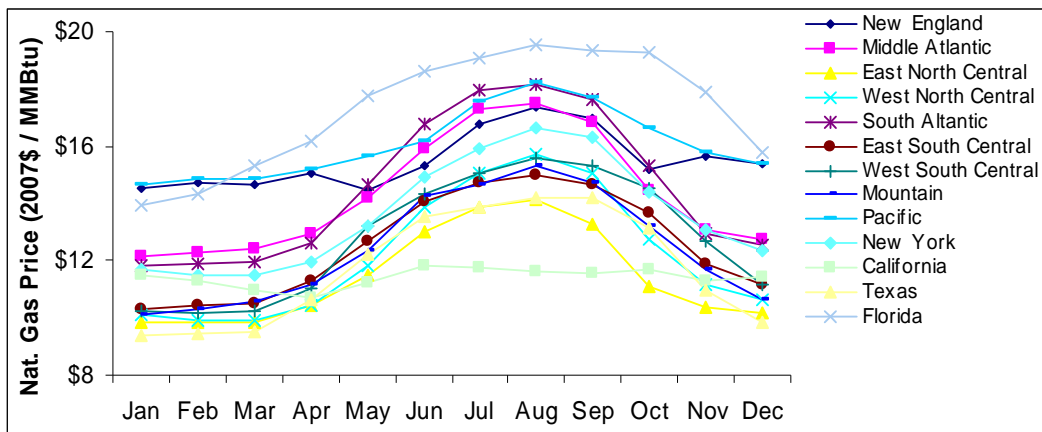


Fig 11 Natural gas price forecast for 2010

Figure 12 shows annual trends (based on AEO 2009 projections) for all Census Division and four large states for the period (2010-2030).

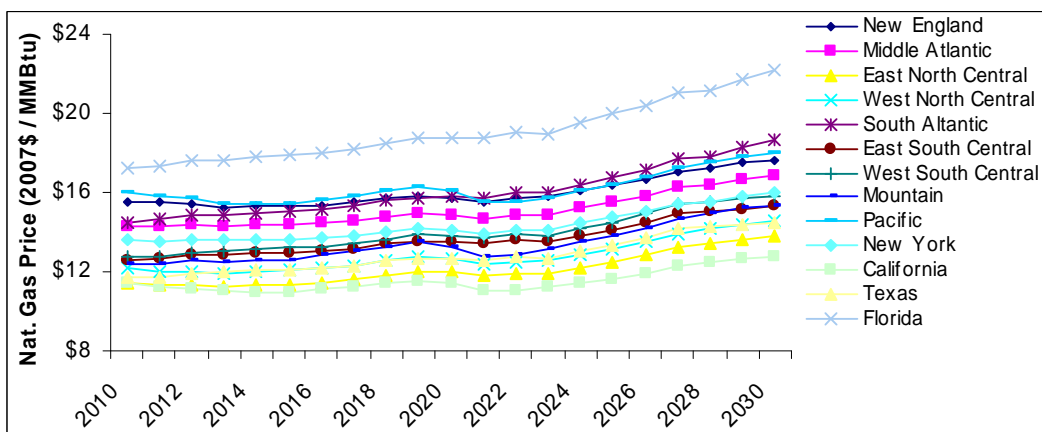


Fig 12 Natural gas price forecast from 2010 to 2030

APPENDIX B: DISTRIBUTION OF RESULTS

The outcome of the LCC analysis is a distribution of values from a sample size of 10,000 households. The following charts (Figures 13-17) show the resulting distributions for the total installed cost, total operating cost and the LCC savings (by option) and for the house heating load and hot water use (regionally and nationally).

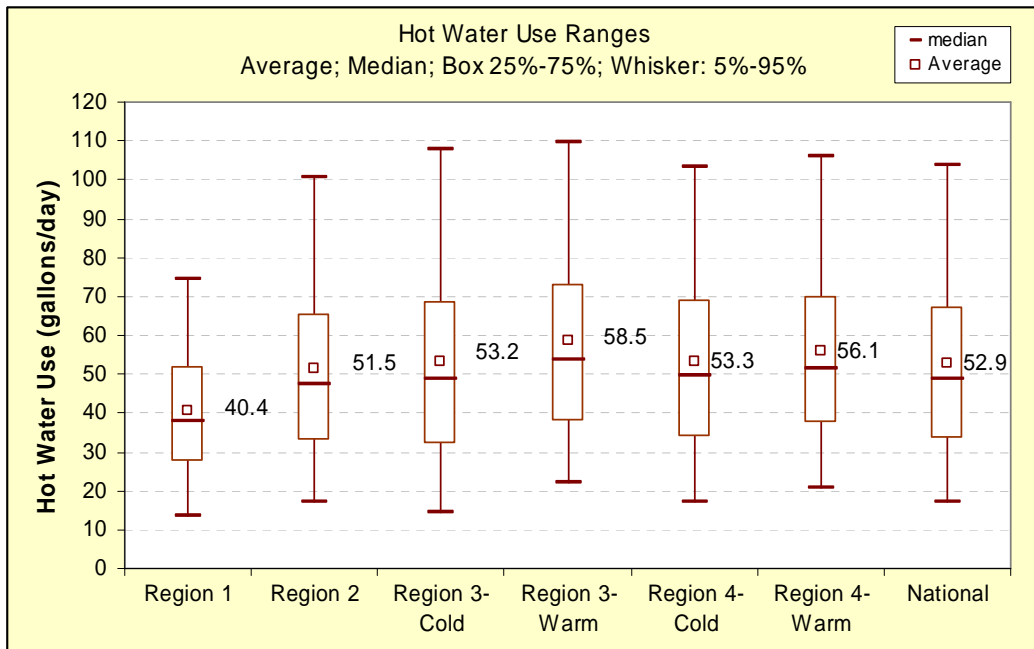


Fig 13 Total installed price by option box plot

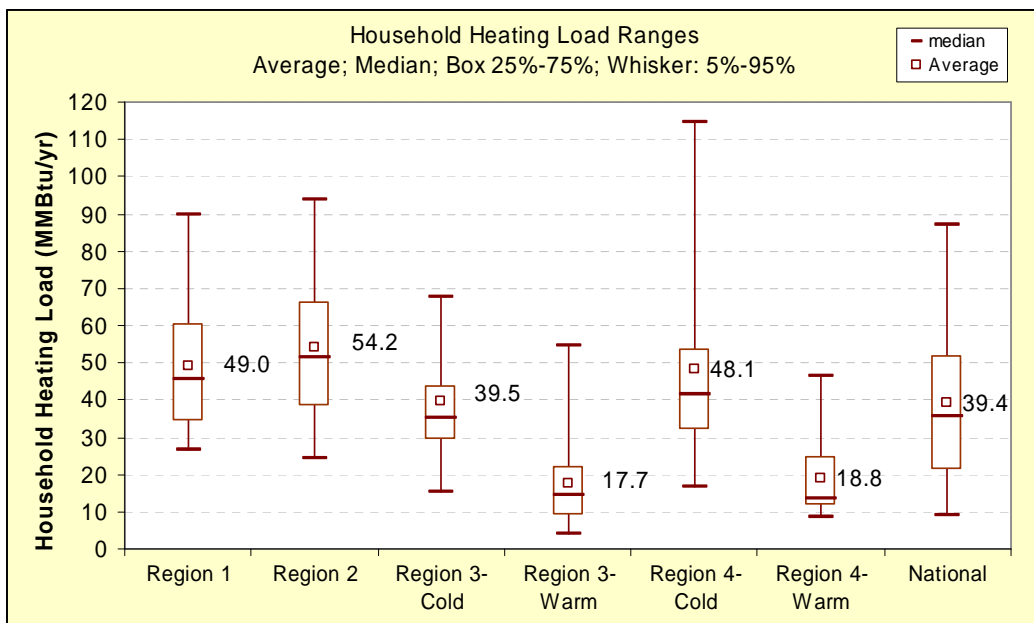


Fig 14 Household heating load by region box plot

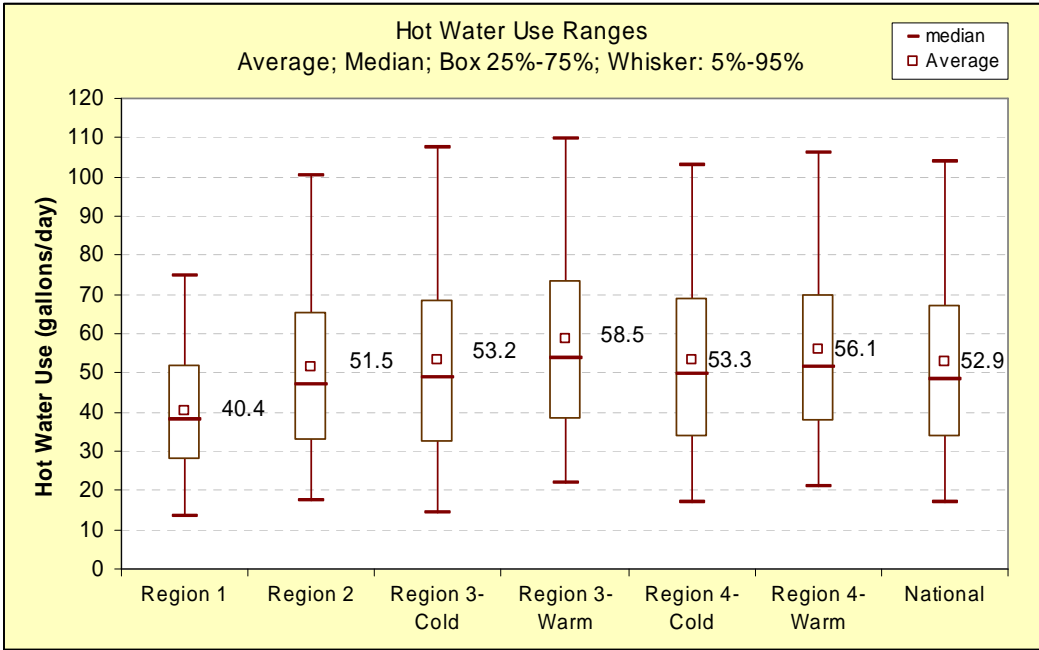


Fig 15 Hot water use by region box plot

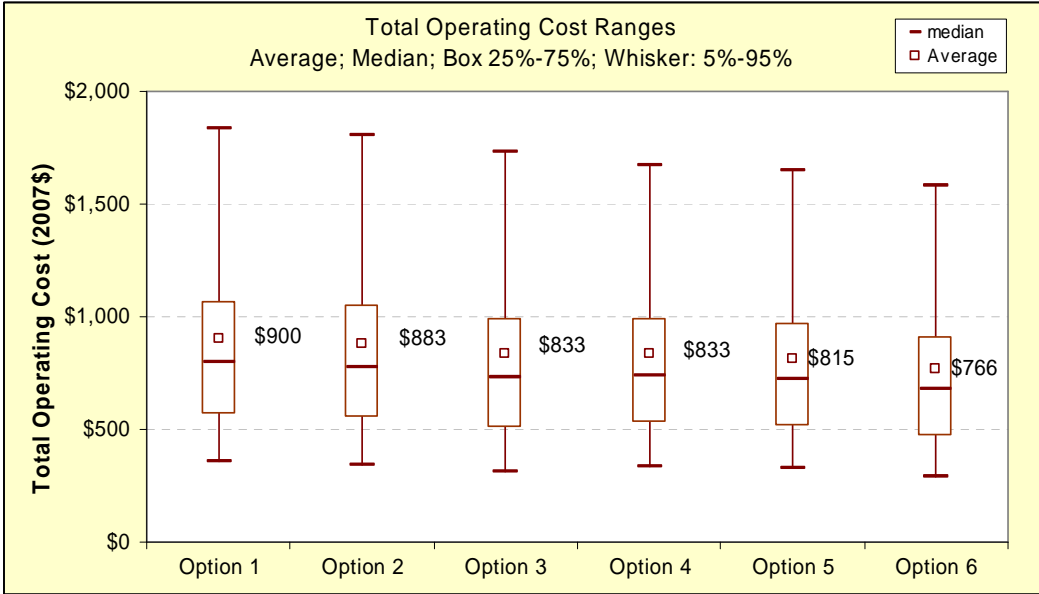


Fig 16 Total operating cost by option box plot

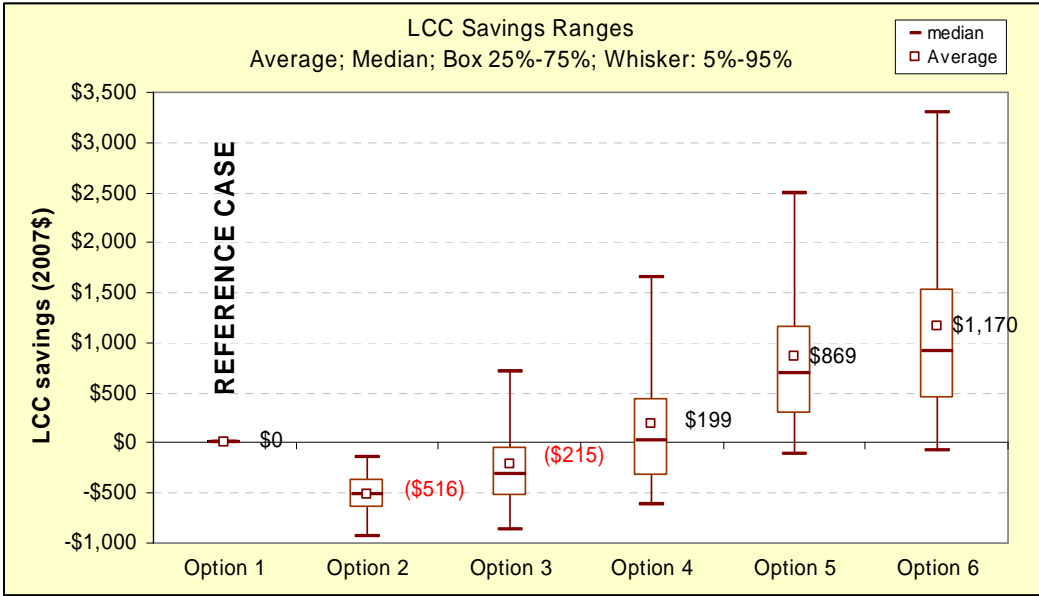


Fig 17 LCC savings by option box plot¹⁹

¹⁹ Note: Negative savings within parenthesis.

APPENDIX C: ENERGY USE CALCULATIONS

This appendix offers an overview of the equations used to calculate energy use for gas water heaters and gas furnaces (Lutz et al. 1999; Lutz et al. 2004).

The Water Heater Analysis Model (WHAM) method (Lutz et al. 1999) is used to derive the average daily water heater energy consumption (Q_{in}):

$$Q_{in} = \frac{vol \times den \times C_p \times (T_{tank} - T_{in})}{RE} * \left(1 - \frac{UA \times (T_{tank} - T_{amb})}{P_{on}} \right) + 24 \times UA \times (T_{tank} - T_{amb})$$

where:

C_p	=	specific heat of stored water, set constant at 1.000743 Btu/lb-oF.
den	=	density of stored water, set constant at 8.29 lb/gal, and
P_{on}	=	rated input power, Btu/h,
Q_{in}	=	total water heater energy consumption, Btu/day,
RE	=	recovery efficiency, %,
T_{amb}	=	temperature of the air surrounding the water heater, oF,
T_{in}	=	inlet water temperature, oF,
T_{tank}	=	thermostat setpoint temperature, oF,
vol	=	volume of hot water drawn in 24 hours, gal/day,
UA	=	standby heat-loss coefficient, Btu/h-oF,

The volume of hot water drawn in 24 hours is determined using a hot water draw model which uses a set of household characteristics and water heater performance parameters (U.S. Department of Energy 2009b). WHAM yields total water heater energy consumption (Q_{in}), which is disaggregated into electricity and fuel consumption.

The gas furnace fuel consumption ($FuelUse$) is calculated using:

$$FuelUse = BOH_{SS} \times Q_{IN}$$

where:

BOH_{SS}	=	steady-state burner operating hours (hr),
Q_{IN}	=	input capacity of existing furnace (kBtu/hr),

The burner operating hours (BOH_{SS}) for each household are determined using the RECS' household energy use and the performance characteristics of the gas furnace.