

# UCSF

## UC San Francisco Previously Published Works

### Title

Snoring, Daytime Sleepiness, and Incident Cardiovascular Disease in The Health, Aging, and Body Composition Study

### Permalink

<https://escholarship.org/uc/item/45z3k090>

### Journal

Sleep, 36(11)

### ISSN

0161-8105

### Authors

Endeshaw, Yohannes  
Rice, Thomas B  
Schwartz, Ann V  
et al.

### Publication Date

2013-11-01

### DOI

10.5665/sleep.3140

Peer reviewed

# Snoring, Daytime Sleepiness, and Incident Cardiovascular Disease in The Health, Aging, and Body Composition Study

Yohannes Endeshaw, MD, MPH<sup>1</sup>; Thomas B. Rice, MD, MS<sup>2</sup>; Ann V. Schwartz, PhD, MPH<sup>3</sup>; Katie L. Stone, PhD<sup>4</sup>; Todd M. Manini, PhD<sup>5</sup>; Suzanne Satterfield, MD, DrPH<sup>6</sup>; Steven Cummings, MD<sup>4</sup>; Tamara Harris, MD, MS<sup>7</sup>; Marco Pahor, MD<sup>5</sup>; for the Health ABC Study

<sup>1</sup>Department of Medicine, Morehouse School of Medicine, Atlanta, GA; <sup>2</sup>University of Pittsburgh School of Medicine, Pittsburgh, PA; <sup>3</sup>Department of Epidemiology and Biostatistics, University of California San Francisco, San Francisco CA; <sup>4</sup>Research Institute, California Pacific Medical Center, San Francisco, CA; <sup>5</sup>Department of Aging and Geriatric Research, College of Medicine, University of Florida, Gainesville, FL; <sup>6</sup>Department of Preventive Medicine, University of Tennessee, Memphis, TN; <sup>7</sup>Laboratory of Epidemiology, Demography, and Biometry, National Institute on Aging, Bethesda, MD

**Objectives:** To examine the association between snoring and incident cardiovascular disease (CVD).

**Design, Settings, and Participants:** This is a prospective study in which community dwelling older adults were evaluated at baseline, and followed up for an average of 9.9 years.

**Measurements:** Data on snoring, daytime sleepiness, as well as demographic and clinical characteristics of study participants was collected at baseline, and participants were followed up every six months for an average of 9.9 years. Based on snoring and sleepiness status, 4 groups of participants were created: (1) No Snoring, No Sleepiness; (2) No Snoring, Sleepiness; (3) Snoring, No Sleepiness; (4) Snoring, Sleepiness. Incident CVD was defined as a diagnosis of myocardial infarction, angina pectoris, or congestive heart failure that resulted in overnight hospitalization during the follow-up period. Cox proportional hazard was used to estimate the risk of incident cardiovascular disease during follow-up by baseline snoring and sleepiness status.

**Results:** A total of 2,320 participants with a mean age of 73.6 (2.9) years at baseline were included in the analysis. Fifty-two percent were women, and 58% were white. A total of 543 participants developed CVD events during the follow-up period. Participants who reported snoring associated with daytime sleepiness had significantly increased hazard ratio for CVD events (HR = 1.46 [1.03-2.08], P = 0.035) after adjusting for demographic and clinical confounding factors.

**Conclusion:** The results suggest that self-reported snoring and daytime sleepiness status are associated with an increased risk of future cardiovascular disease among older adults.

**Keywords:** Snoring, daytime sleepiness, cardiovascular disease

**Citation:** Endeshaw Y; Rice TB; Schwartz AV; Stone KL; Manini TM; Satterfield S; Cummings S; Harris T; Pahor M; for the Health ABC Study. Snoring, daytime sleepiness, and incident cardiovascular disease in the health, aging, and body composition study. *SLEEP* 2013;36(11):1737-1745.

## INTRODUCTION

Snoring is not just a “common nuisance of sleep,” but is a condition that indicates increased resistance to airflow in the upper airway during sleep.<sup>1,2</sup> The prevalence of habitual snoring, defined as snoring 3 or more days per week, among middle-aged and older adults has been reported to range from 10% to 20% among women and 29% to 39% among men.<sup>3-5</sup> Snoring is one of the cardinal manifestations of obstructive sleep apnea and hypopnea (OSAH)<sup>6,7</sup>; however, over a third of individuals who report habitual snoring may not have significant apnea and hypopnea events.<sup>8</sup> This indicates that snoring could also represent a separate clinical entity apart from OSAH. Previous epidemiological studies have reported significant association between snoring and diabetes mellitus,<sup>9</sup> incident hypertension,<sup>10</sup> angina pectoris,<sup>11</sup> and incident coronary heart disease and stroke.<sup>3</sup> Conversely, lack of association between snoring and incident cardiovascular events has also been reported. For example, among 380 middle-aged adults who had ambulatory recording of breathing status during sleep at baseline and were

followed for 17 years, recorded snoring was not associated with incident cardiovascular disease (CVD) or mortality.<sup>12</sup> While most of the study participants in the aforementioned studies are middle-aged adults, similar conflicting results on the adverse effects of snoring have also been reported among older adults. Both significant association and lack of association have been reported between snoring and CVD among the elderly.<sup>5,13,14</sup> These conflicting results imply that the clinical significance of snoring has not been well established.

Daytime sleepiness is one of the common sleep-wake complaints reported by older adults and has been associated with multiple adverse outcomes, including psychiatric disorders, metabolic abnormalities, CVD, and mortality.<sup>5,15,16</sup> Although sleep related breathing disorder (SRBD) is one of the multiple etiological factors of daytime sleepiness reported in previous studies,<sup>17,13,19</sup> a significant proportion of older adults with SRBD may not report daytime sleepiness.<sup>18,19</sup> It is also notable that adverse effects of SRBD have been reported to vary based on the presence or absence of daytime sleepiness. For example, the association between SRBD and CVD is stronger among participants who reported daytime sleepiness than those who did not report daytime sleepiness.<sup>20,21</sup> Furthermore, treatment of SRBD with continuous positive airway pressure did not result in beneficial effect among participants with no daytime sleepiness.<sup>22</sup> Among older adults, study participants with moderate or severe SRBD and reported daytime sleepiness had increased risk of mortality, whereas mortality was not increased among participants with SRBD and no reported daytime sleepiness.<sup>23</sup>

Submitted for publication August, 2012

Submitted in final revised form June, 2013

Accepted for publication September, 2013

Address correspondence to: Yohannes Endeshaw MD, MPH, Division of Geriatrics, Department of Medicine, Morehouse School of Medicine, 720 Westview Drive SW, Atlanta, GA 30310-1495; E-mail: yendeshaw@msm.edu

These findings suggest that daytime sleepiness could moderate (modify) adverse effects of SRBD; it is possible that this may explain, at least in part, the conflicting results in the relationship between SRBD and adverse outcomes previously reported.

In the current study, we examine the association between snoring and incident CVD among community dwelling adults older than 70 years of age. Because adverse effects of SRBD have been shown to vary based on the status of daytime sleepiness as mentioned above, we hypothesized that participants who reported snoring and daytime sleepiness at baseline would have increased risk of CVD during follow-up in comparison to those who report snoring but no daytime sleepiness.

## METHODS

### Study Population

The Health ABC Study is a prospective cohort study in which relatively healthy community-dwelling older adults who were 70 to 79 years old were recruited between March 1997 and July 1998; participants in the current study were followed up for an average of 9.9 years. A total of 3,075 participants (1,584 females and 1,491 males) were randomly selected from a list of Medicare beneficiaries residing in areas surrounding Pittsburgh, PA, and Memphis, TN. Participants who were independent in their activities of daily living, and were able to walk a quarter of a mile and climb 10 steps without difficulty were included in the study. At baseline, data related to prevalent medical conditions, sleep characteristics, daytime sleepiness, and medication use were collected using structured questionnaires.

### Sleep Assessment

Sleep questionnaire was used to evaluate self-reported snoring status, daytime sleepiness, sleep duration, and use of sleep aids. The 2 questions used to assess snoring status were: "Have you ever snored?" and "How often do you snore?" The first question had 3 responses (yes, no, don't know), while the second question had 6 responses (never, rarely, sometimes, often, always, don't know). Based on these responses, participants who reported snoring often or always were grouped as habitual snorers, while the rest of participants, including those who reported "don't know" were grouped as non-habitual snorers. Information on snoring was obtained only at baseline. Daytime sleepiness was determined based on the following question: "How often do you feel sleepy during the day?" Responses included never, rarely, sometimes, often, and always; participants who reported feeling sleepy sometimes, often, and always were categorized as having significant daytime sleepiness. Based on snoring and daytime sleepiness status, 4 categories were created as follows: "No habitual snoring and No sleepiness," "No habitual snoring and Sleepiness," "Habitual snoring and No sleepiness," and "Habitual snoring and Sleepiness." Self-reported sleep duration was assessed using the following question "How many hours of sleep do you usually get at night?" and participants responded with duration of sleep in hours. Use of sleep aids was determined based on the question "Do you take sleeping pills or other medication to help you sleep" with the following responses: "never," "rarely," "sometimes," "often," "almost always." Based on these responses, 3 groups were created: (1) "Never" or "Rarely," (2) "Sometimes," and

(3) "Often or Almost Always." Additionally, information about subjective sleep problems was collected using the following questions. How often do you have trouble: (1) "falling asleep," (2) "waking up from sleep with difficulty going back to sleep," and (3) "waking up too early in the morning"? An "often" or "always" response to any of these questions was considered a significant sleep complaint. Objective monitoring (recording) of breathing during sleep was not performed.

### Incident Cardiovascular Disease (CVD)

Information about hospitalization was obtained during 6-month follow-up interview or from a report by the participants during hospitalization or after discharge from the hospital. Following this, appropriate medical records were gathered from the respective health facility and based on the information obtained, first hospitalization due to CVD was adjudicated according to the study criteria.<sup>24</sup> Criteria for definite myocardial infarction included (1) the presence of evolving diagnostic pattern on ECG, or (2) diagnostic ECG pattern and abnormal enzymes, or (3) cardiac pain and evolving ST-T pattern on ECG or equivocal ECG pattern. Criteria for definite angina pectoris included symptoms of chest pain, chest tightness, physician diagnosis of angina pectoris, and medical treatment for angina pectoris. Criteria for definite congestive heart failure (CHF) included physician diagnosis of CHF and medical treatment for CHF. The time interval between the day of first study visit (time zero) and the day of first hospitalization for these events was calculated to derive the time to event.

### Baseline Characteristics of Study Participants

In addition to demographic characteristics, variables that were previously described to be associated with SRBD and/or CVD were included in the analysis; these included body mass index, mood and cognition status, smoking status, alcohol consumption, hypertension, diabetes mellitus, metabolic syndrome, comorbidity status, and medication use. Laboratory values for high density lipoprotein (HDL), as well as biomarkers of inflammation which were reported to be associated with SRBD, sleepiness, and heart disease (C-reactive protein [CRP], interleukin 6 [IL-6], and tumor necrosis factor- $\alpha$  [TNF- $\alpha$ ])<sup>25</sup> were also included. Weight and height were measured at baseline and body mass index is calculated based on the following formula (weight in kg divided by height in m<sup>2</sup>). Center for Epidemiologic Studies Depression Scale (CES-D) and Modified Mini-Mental State Examination (3MSE) tests were used to determine mood and cognition status respectively. Hypertension status was determined based on self-reported history of hypertension and medication use for hypertension, or sitting systolic and/or diastolic blood pressure values > 140 and/or > 90 mm Hg, respectively. Status of diabetes mellitus (DM) was determined based on self-reported history and use of medication for DM, or fasting blood sugar > 126 mg/dL. Previously reported criteria were used to identify participants with metabolic syndrome.<sup>26</sup> Morbidity status was determined based on self-reported diagnosis of diseases using a method previously described,<sup>27</sup> and this method was used with certain modifications to adjust to our dataset. A total of 18 conditions were identified, and these were categorized in to 10 domains based on specific organ systems involved, such as cardiovascular, pulmonary, and

gastrointestinal. The sum of the number of organ systems (domains) involved is used to indicate comorbidity score. In addition, number of prescription medications is used to denote morbidity status, with increased number of medications indicating increased morbidity.

### Statistical Analysis

Individuals with definite or possible coronary heart disease (CHD) and/or CHF at baseline based on criteria listed in the Appendix (N = 662), and those in whom data for CHD and/or CHF is missing (N = 93), were excluded from the study.

### Baseline Characteristics

Demographic and clinical characteristics of participants were evaluated among participants by snoring and sleepiness status using one-way analysis of variance and  $\chi^2$  analysis for continuous and categorical variables, respectively.

### Incident Cardiovascular Disease

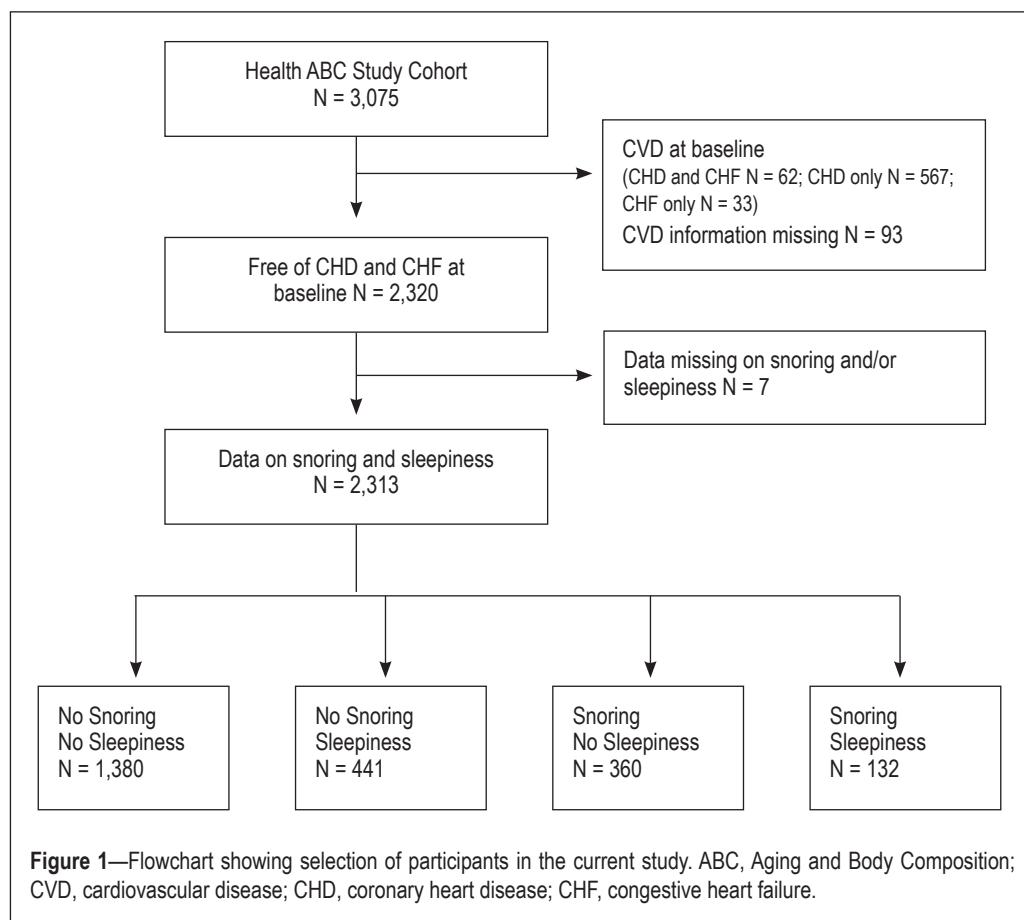
Person-year data was calculated based on the number of participants who developed a cardiovascular event and time-to-first cardiovascular event. Kaplan-Meier survival curve was used to plot pattern of CVD event free survival time by snoring/sleepiness status. Cox proportional hazards models were used to evaluate unadjusted and adjusted associations between snoring/sleepiness status and CVD events. Censoring of participants was performed when participants were lost to follow-up, at the time of death, or at the end of the follow-up period. Covariates for the Cox regression models were selected based on their significant association with snoring and sleepiness status on bivariable analysis, and biological or clinical importance such as significant association with CVD and SRDB in previous studies. In addition to unadjusted model (Model 1), 3 additional Cox proportional hazards models were created. Model 2 included age in years, sex, race, marital status, years of education, BMI, alcohol use status, use of sleeping pills, and sleep duration. Model 3 included variables in Model 2 and traditional risk factors for cardiovascular disease such as smoking status, CES-D score, hypertension, diabetes mellitus, and low HDL cholesterol. In addition to variables in Model 3, Model 4 included biomarkers of inflammation that have been previously reported to be associated with both SRBD and CVD (CRP, IL-6, and TNF- $\alpha$ ).<sup>25</sup> Log-log plot was used to evaluate the proportional hazard assumption.

Cox-regression analysis was repeated using multiple imputation method to account for missing data, as well as bootstrapping resampling method. A two-sided P value < 0.05 was used to indicate statistical significance. Analyses were performed using IBM statistics SPSS 19 software.

### RESULTS

At baseline, there were 1,039 male (45%) and 1,281 female (55%) participants free of CHD and CHF (Figure 1); mean (SD) age was 73.5 (2.9) years. Fifty-nine percent of participants were white and 41% black; 52% were from Memphis. Baseline snoring and daytime sleepiness responses were available for 2,313 participants; of these, 1,380 (60%) reported no habitual snoring and no daytime sleepiness, 441 participants (19%) reported daytime sleepiness with no habitual snoring, 360 participants (15%) reported habitual snoring without daytime sleepiness, and 132 participants (6%) reported habitual snoring and daytime sleepiness. Habitual snoring was more commonly reported by males than females (28% vs. 16%, respectively,  $\chi^2 = 55.5$ ,  $P < 0.001$ ), and there was no significant difference in snoring frequency by racial group or by study site.

Table 1 shows baseline demographic and selected clinical characteristics by snoring/sleepiness status. As shown, the proportion of obese participants was much higher among participants in the snoring and sleepiness groups than other groups. The proportion of participants who reported short sleep duration was higher among those in the snoring and sleepiness group, while the proportion of participants who reported long sleep duration was higher among snoring and no sleepiness



**Table 1**—Demographic and selected clinical characteristics of participants by snoring/sleepiness status

	<b>NSNS N = 1,380 G1</b>	<b>NSS N = 441 G4</b>	<b>SNS N = 360 G3</b>	<b>SS N = 132 G2</b>	<b>Total N = 2,313*</b>	<b>Statistics P value</b>
Age in years, mean (SD)	73.6 (2.9)	73.5 (2.9)	73.4 (2.8)	73.3 (2.9)	73.3 (2.8)	0.270
Sex (%)						
Female	60	56	39	45	55	0.001
Male	40	44	61	55	45	
Race (%)						
White	58	64	59	55	59	0.077
Black	42	36	41	45	41	
Marital Status (%)						
Married	47	55	72	67	56	< 0.001
Not married	53	45	28	33	44	
Educational status (%)						
Less than high school	25	21	27	25	24	0.117
Completed high school	34	30	29	34	33	
Post-high school education	41	49	44	41	43	
Site (%)						
Pittsburgh	53	50	51	48	52	0.482
Memphis	47	50	49	52	48	
Body mass index (%)						
< 25 kg/m <sup>2</sup>	37	29	27	26	33	0.001
25.0-29.9 kg/m <sup>2</sup>	41	46	46	29	42	
≥ 30 kg/m <sup>2</sup>	22	25	27	45	25	
3MSE score, mean (SD)	90.1 (8.9)	91.1 (7.8)	89.7 (8.1)	90.8 (7.5)	90.2 (8.5)	0.073
CES-D ≥ 16 (%)	2	10	3	12	4	0.001
Trouble falling asleep	9	18	7	19	11	< 0.001
Waking up from sleep	12	25	12	32	16	< 0.001
Waking up too early	9	20	10	23	12	< 0.001
Sleep Duration (%)						
6-8 hours	82	81	84	76	82	0.001
< 6 hours	12	15	8	19	12	
> 8 hours	6	4	8	5	6	
Use of Sleep Aids (%)						
No	87	79	87	84	85	0.001
Sometimes	9	13	8	8	10	
Often/Always	4	8	5	8	5	

NSNS, No Snoring and No Sleepiness; NSS, No Snoring and Sleepiness; SNS, Snoring and No Sleepiness; SS, Snoring and Sleepiness; 3MSE, Modified Mini-Mental state examination; CES-D, Center for Epidemiological Studies Depression Scale. \*7 participants had missing values for snoring/sleepiness questions.

group. It is also notable that the proportion of participants with sleep complaints was higher among those who reported snoring and sleepiness, while the rate of sleep complaints among those with snoring and no sleepiness was similar to those who reported no snoring and no sleepiness. Table 2 shows more clinical characteristics of participants by snoring/sleepiness status. The prevalence of diabetes mellitus, low HDL status, and metabolic syndrome, as well as disease burden based on comorbidity score, was significantly higher among participants who reported snoring associated with sleepiness.

The average (SD) follow-up period was 9.9 (3.1) years. A total of 543 participants (24%) had one or more definite CVD events. Table 3 shows the distribution of CVD event rates by snoring/sleepiness status. Overall, 36% of participants who reported habitual snoring and sleepiness had incident cardiovascular events, while the corresponding proportions for those with no snoring/no sleepiness, no snoring/sleepiness, and snoring/

no sleepiness status were 22%, 23%, and 26%, respectively ( $\chi^2 = 14.2$ ,  $df = 3$ ,  $P = 0.003$ ). Figure 2 shows Kaplan-Meier survival curves by snoring and sleepiness status and number of participants at risk at each follow-up periods. As shown, CVD free survival during the follow up period was significantly decreased among participants who reported habitual snoring and daytime sleepiness at baseline (Log Rank test  $P = 0.005$ ).

Table 4 shows unadjusted and adjusted results of Cox proportional hazard ratio by snoring and sleepiness status. As shown, participants who reported snoring associated with daytime sleepiness had significantly increased hazard ratio for CVD events in comparison to those who did not report either (HR [CI] 1.46 [1.03-2.08]), even after controlling for possible confounding factors. No significant interaction was observed between snoring/sleepiness status and age, sex, race, body mass index, and sleep duration. A total of 1,001 (43%) participants died during the follow-up period; the proportions of participants



**Table 2**—Selected clinical characteristics of participants by snoring/sleepiness status

	<b>NSNS N = 1,380</b>	<b>NSS N = 441</b>	<b>SNS N = 360</b>	<b>SS N = 132</b>	<b>Total N = 2,313*</b>	<b>Statistics P value</b>
Smoking status (%)						
Non-smoker	47	49	38	45	44	
Current smoker	12	10	8	6	10	0.001
Former smoker	41	41	54	49	46	
Alcohol drinking status (%)						
Never	31	26	25	27	29	
Current drinker	50	54	51	40	50	0.001
Former drinker	19	20	24	33	21	
Hypertension (%)						
Yes	57	61	56	62	58	0.311
Diabetes mellitus (%)						
No	85	84	79	77	83	
Yes	15	16	21	23	17	0.017
HDL cholesterol (%)						
< 40 mg/dL	15	16	22	21	16	0.007
Metabolic syndrome (%)						
No	32	34	39	46	34	0.003
Yes						
Comorbidity score category (%)						
0-1	49	40	45	38	46	< 0.001
2-3	45	50	49	47	47	
≥ 4	6	10	6	15	7	
Number of medications (%)						
0-2 medications	56	49	59	50	55	
3-5 medications	31	37	29	31	32	0.062
> 5 medications	13	14	12	18	13	
Biomarkers of inflammation						
CRP (µg/mL)	2.8 (4.8)	2.9 (4.3)	3.0 (4.9)	2.9 (3.4)	2.9 (4.7)	0.904
IL-6 (pg/mL)	2.2 (1.8)	2.3 (1.9)	2.4 (2.0)	2.5 (1.8)	2.3 (1.8)	0.481
TNF-α (pg/mL)	3.3 (1.6)	3.4 (1.8)	3.5 (2.1)	3.4 (1.4)	3.4 (1.7)	0.481

NSNS, No Snoring and No Sleepiness; NSS, No Snoring and Sleepiness; SNS, Snoring and No Sleepiness; SS, Snoring and Sleepiness; HDL, high density lipoprotein. \*Participants missing values for snoring/sleepiness questions, N = 7.

**Table 3**—Proportion of participants with cardiovascular events during average follow-up of 9.9 years

	<b>NSNS N = 1,380</b>	<b>NSS N = 441</b>	<b>SNS N = 360</b>	<b>SS N = 131</b>	<b>Total 2,312*</b>
Myocardial infarction	92 (8%)	35 (8%)	27 (8%)	7 (5%)	161 (7%)
Angina pectoris	112 (8%)	37 (8%)	43 (12%)	24 (18%)	216 (9%)
Congestive heart failure	158 (11%)	37 (8%)	42 (12%)	21 (16%)	258 (11%)
Total CVD events	305 (22%)	98 (22%)	93 (26%)	47 (36%)	543 (24%)
Follow-up time, person years	13,732.3	4,301.8	3,609.7	1,315.2	22,958.9
CVD rate/1000 person-year	22	23	26	36	24

NSNS, No Snoring and No Sleepiness; NSS, No snoring and Sleepiness; SNS, Snoring and No Sleepiness; SS, Snoring and Sleepiness; CVD, cardiovascular disease. \*Participants having missing values, N = 8.

who died in the snoring-sleepiness, snoring-no sleepiness, no snoring-sleepiness, and no snoring-no sleepiness groups were 45%, 46%, 44%, and 46%, respectively. There was no significant difference in mortality among participants in the different snoring-sleepiness groups.

In addition to snoring and sleepiness status, other variables that showed significant association with incident CVD in the model include age (HR [CI] = 1.04 [1.00-1.07]), male sex (HR [CI] = 1.60 [1.25-2.04]), current smoking status (HR

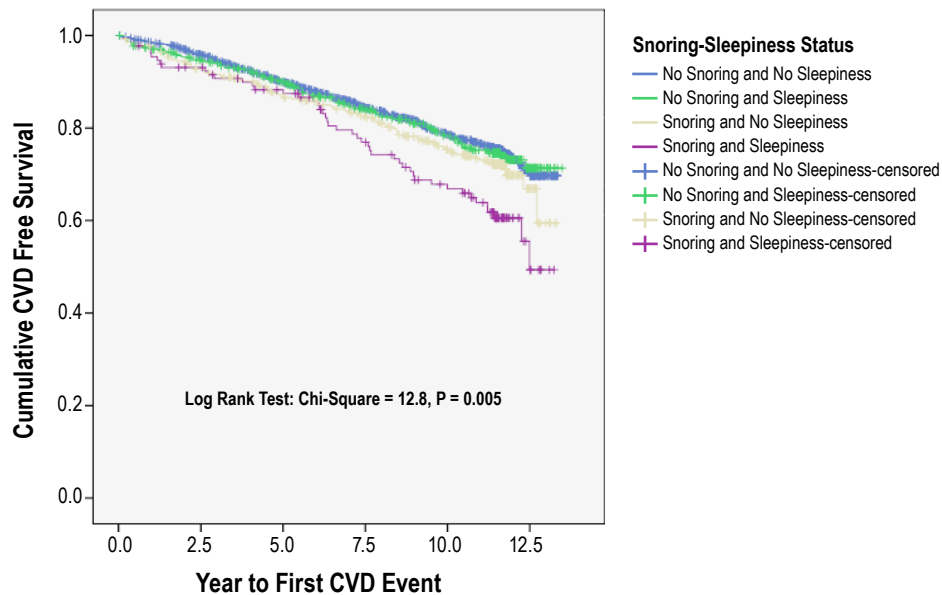
[CI] = 1.48 [1.05-2.09]), hypertension (HR [CI] = 1.47 [1.19-1.81]), diabetes mellitus (HR [CI] = 1.38 [1.09-1.75]), and IL-6 level (HR [CI] = 1.40 [1.17-1.66]). In the presence of hypertension and diabetes mellitus, comorbidity score did not show a significant association with incident CVD when it was added in to the model; and it is not included in the final model as a covariate.

Statistical analysis was repeated using “often” and “always” response to indicate significant daytime sleepiness. Based

**Table 4**—Cox regression model (outcome variable = incident cardiovascular disease)

	Model 1		Model 2		Model 3		Model 4	
	HR (CI)	P value	HR (CI)	P value	HR (CI)	P value	HR (CI)	P value
NOT SNORING and NOT SLEEPY	1.00		1.00		1.00		1.00	
NOT SNORING and SLEEPY	1.03 (0.82-1.29)	0.788	0.99 (0.77-1.26)	0.909	0.99 (0.77-1.28)	0.956	1.00 (0.77-1.31)	0.994
SNORING and NOT SLEEPY	1.18 (0.94-1.50)	0.118	1.06 (0.83-1.36)	0.617	1.10 (0.85-1.41)	0.481	1.01 (0.77-1.33)	0.920
SNORING and SLEEPY	1.70 (1.25-2.31)	0.001	1.52 (1.10-2.10)	0.010	1.48 (1.06-2.07)	0.020	1.46 (1.03-2.08)	0.035

HR, hazard ratio; CI, confidence interval. Model 1: Unadjusted. Model 2: Adjusted for age, sex, race, marital status, years of education, body mass index, alcohol use status, sleep duration, and use of sleeping pills. Model 3: Model 2 + baseline smoking status, diabetes mellitus, hypertension, HDL cholesterol (log transformed), and CES-D score (log transformed). Model 4: Model 3 + baseline TNF- $\alpha$ , interleukin-6, and C-reactive protein levels (all log transformed).



Number at risk		1,358	1,240	1,079	912	455	36
NSNS		1,358	1,240	1,079	912	455	36
NSS		430	384	337	282	146	15
SNS		356	317	280	241	115	9
SS		129	115	103	84	43	4

**Figure 2**—Kaplan-Meier Curve by Snoring and Sleepiness Status. NSNS, No Snoring and No Sleepiness; NSS, No Snoring and Sleepiness; SNS, Snoring and No Sleepiness; SS, Snoring and Sleepiness.

on this criterion, the proportion of participants who reported daytime sleepiness was 115 of 2,316 (5%); among those who reported habitual snoring, it was 30 of 492 (6%). There was no significant association between snoring and sleepiness status and incident CVD using this criterion to define daytime sleepiness.

Results of Cox regression analyses examining the association between snoring and sleepiness status and incident CVD using multiple imputations to account for missing data (HR 1.40 [1.01-1.92]) and bootstrapping resampling method (HR 1.51 [1.06-2.14]) were similar to the main result indicated above.

## DISCUSSION

Results of this prospective study demonstrate increased risk of incident cardiovascular disease among study participants who report snoring associated with daytime sleepiness at baseline.

We also found that the risk of cardiovascular events among participants reporting snoring without daytime sleepiness was not significantly different from those reporting no snoring and no daytime sleepiness. These findings are in agreement with previous reports that indicated that the association between SRBD and adverse outcomes may be moderated by daytime sleepiness.<sup>20-22</sup> Previous studies that examined the association between snoring only, and CVD or mortality among older adults did not find significant associations;<sup>5,28</sup> and our results are also in agreement with these findings. In contrast, a previous longitudinal study reporting significant association between daytime sleepiness and incident CVD, as well as increased mortality, did not find interaction between snoring and daytime sleepiness.<sup>5</sup> However, the criteria for defining both snoring and

daytime sleepiness in that study were different from the criteria used in the current study; this may explain the difference in the results of the two studies.

Previous studies have reported significant association between daytime sleepiness and increased risk of cardiovascular disease among community dwelling older adults, in both cross-sectional<sup>29,30</sup> and prospective studies.<sup>5,15</sup> However, in the current study, the risk of cardiovascular events among participants who reported daytime sleepiness was only elevated in those who also reported snoring. In one previous study in which 3,100 participants 30 to 69 years old were followed up for 10 years, increased risk of mortality was reported among those reporting snoring and daytime sleepiness, in comparison to those reporting no snoring and no daytime sleepiness<sup>31</sup>; however, this effect was seen predominantly among participants younger than 60 years old, and no details on incident cardiovascular disease were reported in this study. To our knowledge, this is the first study

to report significant association between snoring and sleepiness status and incident cardiovascular disease in a cohort of older adults greater than 70 years of age.

Several possible mechanisms may contribute to increased risk of incident cardiovascular disease among those with snoring and sleepiness. Snoring is strongly associated with OSAH and is described as one of the cardinal manifestations of OSAH.<sup>6</sup> Although moderate to severe OSAH is reported to occur in about 20% of older adults,<sup>8</sup> the relationship between OSAH and cardiovascular disease in this group is not well established. For example, reports from a recently completed prospective study (Sleep Heart Health Study) indicated no significant association between sleep apnea and coronary heart disease among participants  $\geq 70$  years old, no independent association between sleep apnea and incident hypertension among participants  $> 65$  years old,<sup>32</sup> significantly increased risk of death only in men  $< 70$  years old,<sup>33</sup> and independent association between sleep apnea and congestive heart failure only in male participants.<sup>34</sup> Similar results were reported in cross-sectional analysis in which independent associations were reported between sleep apnea and hypertension,<sup>35</sup> as well as other cardiovascular risk factors,<sup>36</sup> but these associations were significant predominantly among participants  $< 65$  years old. In fact, one previous study has reported decreased mortality among older adults with moderate sleep apnea,<sup>37</sup> suggesting that moderate sleep apnea in this group of the population may provide a “survival advantage.”

On the other hand, other studies have reported significant association between sleep apnea and adverse outcomes such as non-dipping of blood pressure during sleep,<sup>38</sup> increased cardiovascular disease,<sup>39</sup> and increased mortality<sup>39,23</sup> among older adults. It is possible that snoring and sleepiness status may represent severe form of OSAH, and this may explain the mechanism in the association reported in the current study.

It is notable that previous studies have reported increased sleep fragmentation and more severe oxygen desaturation among participants with OSAH and daytime sleepiness than those with OSAH and no daytime sleepiness.<sup>40</sup> These changes have been described to be associated with increased sympathetic activity and chronic inflammation, which could explain the association between OSAH and increased cardiovascular morbidity among those with daytime sleepiness.<sup>41</sup> In the current study, sleep complaints were more commonly reported among participants who reported snoring and daytime sleepiness (Table 1), and this may indicate more sleep disruption in this group of study participants.

However, snoring and sleepiness could also occur without clinically significant sleep apnea, i.e., apnea hypopnea index  $< 5$  per hour of sleep.<sup>19,42</sup> Among study participants with snoring and no sleep apnea, independent association between snoring and carotid atherosclerosis has been reported,<sup>43</sup> suggesting that snoring may have adverse cardiovascular effect independent of OSAH. Additionally, individuals with snoring associated with resistance to airflow and no significant apnea or hypopnea events have been described to have daytime sleepiness and multiple arousals from sleep due to increase in respiratory effort, a condition referred to as upper airway resistance syndrome (UARS).<sup>44</sup> Although we are not aware of previous reports that have described pathophysiological mechanisms

associated with UARS, similar to OSAH, frequent arousals associated with UARS may result in increased sympathetic activity, and this may mediate the adverse effects associated with this disorder.<sup>45</sup> These mechanisms could explain, at least in part, the mechanism involved in the relationship between snoring and sleepiness status, and cardiovascular disease reported in the current study.

Other findings of importance in the current study include significantly increased prevalence of diabetes mellitus, metabolic syndrome, and low HDL cholesterol among participants who reported snoring and sleepiness (Table 2). Although these associations have been previously reported, these reports were mostly among middle-aged adults,<sup>33,46,47</sup> and our findings extend these previous reports to older adults  $> 70$  years of age. Of note, one previous study using the same dataset has reported a significant association between daytime napping and diabetes mellitus, but snoring status was not reported in the study.<sup>48</sup> Given the common occurrence of these morbidities among older adults, a more detailed examination of these relationships would be warranted.

The current study has several strengths. Participants were community-dwelling older adults  $\geq 70$  years of age, who were regularly followed up for an average of about 9.9 years. In addition, data collection in general and collection of data related to cardiovascular outcomes in particular were performed using well-defined criteria; and this has made it possible to determine the association between our exposure and outcome variables after controlling for potential confounding factors. However, results of the current study should be interpreted in light of the following limitations. Although one of the strengths of the current study is inclusion of non-Hispanic white and black participants, the study did not include Hispanic or Asian participants, and results may not apply to these groups. Because study participants were relatively healthy at recruitment, study participants may not be representatives of older adults with poor health and/or functional status. Information about both snoring status and daytime sleepiness were obtained by self-report, and daytime sleepiness was determined using a single question. Self-reported snoring has been reported to have low sensitivity when compared to objectively measured (recorded) snoring.<sup>49</sup> In addition, participants in the current study who reported “don’t know” and “sometimes” to the “snoring” question were also grouped as having “non-habitual snoring,” although participants in both these groups could have significant SRBD.<sup>50</sup> This could result in misclassification of study participants; however, this exposure was measured before the outcome of incident CVD was known, and the misclassification should therefore be non-differential with respect to the outcome. The effect of this kind of misclassification would be to attenuate the association between our exposure of interest (snoring and sleepiness status) and incident cardiovascular outcome, and not to exaggerate the association. Data on status of treatment of SRBD among study participants were not available, and this may have some effect on the outcome; however, the effect of successful treatment would also be to attenuate the relationship between exposure and outcome. We were not able to show increased risk for CVD when a more stringent criterion was used for the daytime sleepiness question. We think that the low number of participants with daytime sleepiness using the more stringent criterion in the



current study may account, at least in part, for this unexpected finding. Lastly, the questions used for assessment of snoring and daytime sleepiness are not validated in older adults, and their reliability and validity may be limited.

In conclusion, we report that self-reported habitual snoring combined with daytime sleepiness status, but not either factor alone, among community dwelling older adults increase the risk of cardiovascular disease. While previous studies have reported similar associations among mostly middle-aged adults, to our knowledge, this is the first study to report such finding among adults older than 70 years of age. We think that these symptoms could be used as a simple and inexpensive method to identify older adults at increased risk for CVD. Given the high prevalence of cardiovascular morbidity in this group of the population, this may have significant implications in improving CV health status and reducing health care expenditure. Future studies should focus in determining whether successful treatment of SRBD in this group of the population has any impact in preventing or improving the course of cardiovascular diseases.

#### ACKNOWLEDGMENTS

This research was supported in part by the Intramural Research Program of the National Institute of Health (NIH), National Institute on Aging (NIA), by NIA contracts N01-AG-6-2101; N01-AG-6-2103; N01-AG-6-2106; NIA grant R01-AG028050, NINR grant R01-NR012459 and P30 AG028740 Claude D. Pepper Older Americans Independence Center.

#### DISCLOSURE STATEMENT

This was not an industry supported study. The authors have indicated no financial conflicts of interest.

#### REFERENCES

1. Robin IG. Snoring. *Proc R Soc Med* 1948;41:151-3.
2. Robin IG. Snoring. *Proc R Soc Med* 1968;61:575-82.
3. Hu FB, Willett WC, Manson JE, et al. Snoring and risk of cardiovascular disease in women. *J Am Coll Cardiol* 2000;35:308-13.
4. O'Connor GT, Lind BK, Lee ET, et al. Variation in symptoms of sleep-disordered breathing with race and ethnicity: the Sleep Heart Health Study. *Sleep* 2003;26:74-9.
5. Newman AB, Spiekerman CF, Enright P, et al. Daytime sleepiness predicts mortality and cardiovascular disease in older adults. The Cardiovascular Health Study Research Group. *J Am Geriatr Soc* 2000;48:115-23.
6. Lugaresi E. Snoring. *Electroencephalogr Clin Neurophysiol* 1975;39:59-64.
7. Zwillich C. The clinical significance of snoring. *Arch Intern Med* 1979;139:24.
8. Young T, Shahar E, Nieto FJ, et al. Predictors of sleep-disordered breathing in community-dwelling adults: the Sleep Heart Health Study. *Arch Intern Med* 2002;162:893-900.
9. Valham F, Stegmayr B, Eriksson M, et al. Snoring and witnessed sleep apnea is related to diabetes mellitus in women. *Sleep Med* 2009;10:112-7.
10. Hu FB, Willett WC, Colditz GA, et al. Prospective study of snoring and risk of hypertension in women. *Am J Epidemiol* 1999;150:806-16.
11. Koskenvuo M, Kaprio J, Partinen M, et al. Snoring as a risk factor for hypertension and angina pectoris. *Lancet* 1985;1:893-6.
12. Marshall NS, Wong KK, Cullen SR, et al. Snoring is not associated with all-cause mortality, incident cardiovascular disease, or stroke in the buselton health study. *Sleep* 2012;35:1235-40.
13. Enright PL, Newman AB, Wahl PW, et al. Prevalence and correlates of snoring and observed apneas in 5,201 older adults. *Sleep* 1996;19:531-8.
14. Jennum P, Schultz-Larsen K, Christensen N. Snoring, sympathetic activity and cardiovascular risk factors in a 70 year old population. *Eur J Epidemiol* 1993;9:477-82.

15. Empana JP, Dauvilliers Y, Dartigues JF, et al. Excessive daytime sleepiness is an independent risk indicator for cardiovascular mortality in community-dwelling elderly: the three city study. *Stroke* 2009;40:1219-24.
16. Bixler EO, Vgontzas AN, Lin HM, et al. Excessive daytime sleepiness in a general population sample: the role of sleep apnea, age, obesity, diabetes, and depression. *J Clin Endocrinol Metab* 2005;90:4510-5.
17. Pack AI, Dinges DF, Gehrman PR, et al. Risk factors for excessive sleepiness in older adults. *Ann Neurol* 2006;59:893-904.
18. Johansson P, Alehagen U, Svanborg E, et al. Sleep disordered breathing in an elderly community-living population: Relationship to cardiac function, insomnia symptoms and daytime sleepiness. *Sleep Med* 2009;10:1005-11.
19. Gottlieb DJ, Whitney CW, Bonekat WH, et al. Relation of sleepiness to respiratory disturbance index: the Sleep Heart Health Study. *Am J Respir Crit Care Med* 1999;159:502-7.
20. Kapur VK, Resnick HE, Gottlieb DJ. Sleep disordered breathing and hypertension: does self-reported sleepiness modify the association? *Sleep* 2008;31:1127-32.
21. Choi JB, Nelesen R, Loredo JS, et al. Sleepiness in obstructive sleep apnea: a harbinger of impaired cardiac function? *Sleep* 2006;29:1531-6.
22. Barbe F, Mayoralas LR, Duran J, et al. Treatment with continuous positive airway pressure is not effective in patients with sleep apnea but no daytime sleepiness. a randomized, controlled trial. *Ann Intern Med* 2001;134:1015-23.
23. Gooneratne NS, Richards KC, Joffe M, et al. Sleep disordered breathing with excessive daytime sleepiness is a risk factor for mortality in older adults. *Sleep* 2011;34:435-42.
24. Ives DG, Fitzpatrick AL, Bild DE, et al. Surveillance and ascertainment of cardiovascular events. The Cardiovascular Health Study. *Ann Epidemiol* 1995;5:278-85.
25. Pai JK, Pischon T, Ma J, et al. Inflammatory markers and the risk of coronary heart disease in men and women. *N Engl J Med* 2004;351:2599-610.
26. Ford ES, Giles WH, Dietz WH. Prevalence of the metabolic syndrome among US adults: findings from the third National Health and Nutrition Examination Survey. *JAMA* 2002;287:356-9.
27. Rigler SK, Studenski S, Wallace D, et al. Co-morbidity adjustment for functional outcomes in community-dwelling older adults. *Clin Rehabil* 2002;16:420-8.
28. Jennum P, Schultz-Larsen K, Davidsen M, Christensen NJ. Snoring and risk of stroke and ischaemic heart disease in a 70 year old population. A 6-year follow-up study. *Int J Epidemiol* 1994;23:1159-64.
29. Merlino G, Piani A, Gigli GL, et al. Daytime sleepiness is associated with dementia and cognitive decline in older Italian adults: a population-based study. *Sleep Med* 2010;11:372-7.
30. Ohayon MM, Vecchierini MF. Daytime sleepiness and cognitive impairment in the elderly population. *Arch Intern Med* 2002;162:201-8.
31. Lindberg E, Janson C, Svardsudd K, Gislason T, Hetta J, Boman G. Increased mortality among sleepy snorers: a prospective population based study. *Thorax* 1998;53:631-7.
32. O'Connor GT, Caffo B, Newman AB, et al. Prospective study of sleep-disordered breathing and hypertension: the Sleep Heart Health Study. *Am J Respir Crit Care Med* 2009;179:1159-64.
33. Punjabi NM, Caffo BS, Goodwin JL, et al. Sleep-disordered breathing and mortality: a prospective cohort study. *PLoS Med* 2009;6:e1000132.
34. Gottlieb DJ, Yenokyan G, Newman AB, et al. Prospective study of obstructive sleep apnea and incident coronary heart disease and heart failure: the sleep heart health study. *Circulation* 2010;122:352-60.
35. Haas DC, Foster GL, Nieto FJ, et al. Age-dependent associations between sleep-disordered breathing and hypertension: importance of discriminating between systolic/diastolic hypertension and isolated systolic hypertension in the Sleep Heart Health Study. *Circulation* 2005;111:614-21.
36. Newman AB, Nieto FJ, Guidry U, et al. Relation of sleep-disordered breathing to cardiovascular disease risk factors: the Sleep Heart Health Study. *Am J Epidemiol* 2001;154:50-9.
37. Lavie P, Lavie L. Unexpected survival advantage in elderly people with moderate sleep apnoea. *J Sleep Res* 2009;18:397-403.
38. Endeshaw YW, White WB, Kutner M, Ouslander JG, Bliwise DL. Sleep-disordered breathing and 24-hour blood pressure pattern among older adults. *J Gerontol A Biol Sci Med Sci* 2009;64:280-5.
39. Johansson P, Alehagen U, Ulander M, Svanborg E, Dahlström U, Broström A. Sleep disordered breathing in community dwelling elderly: associations with cardiovascular disease, impaired systolic function, and mortality after a six-year follow-up. *Sleep Med* 2011;12:748-53.

40. Sun Y, Ning Y, Huang L, et al. Polysomnographic characteristics of daytime sleepiness in obstructive sleep apnea syndrome. *Sleep Breath* 2012;16:375-81.
41. Dempsey JA, Veasey SC, Morgan BJ, O'Donnell CP. Pathophysiology of sleep apnea. *Physiol Rev* 2010;90:47-112.
42. Young T, Palta M, Dempsey J, Skatrud J, Weber S, Badr S. The occurrence of sleep-disordered breathing among middle-aged adults. *N Engl J Med* 1993;328:1230-5.
43. Lee SA, Amis TC, Byth K, et al. Heavy snoring as a cause of carotid artery atherosclerosis. *Sleep* 2008;31:1207-13.
44. Guilleminault C, Stoohs R, Clerk A, et al. A cause of excessive daytime sleepiness. The upper airway resistance syndrome. *Chest* 1993;104:781-7.
45. Leung RS, Bradley TD. Sleep apnea and cardiovascular disease. *Am J Respir Crit Care Med* 2001;164:2147-65.
46. Theorell-Haglow J, Berne C, Janson C, Lindberg E. The role of obstructive sleep apnea in metabolic syndrome: a population-based study in women. *Sleep Med* 2011;12:329-34.
47. Shahar E, Whitney CW, Redline S, et al. Sleep-disordered breathing and cardiovascular disease: cross-sectional results of the Sleep Heart Health Study. *Am J Respir Crit Care Med* 2001;163:19-25.
48. Goldman SE, Hall M, Boudreau R, et al. Association between nighttime sleep and napping in older adults. *Sleep* 2008;31:733-40.
49. Lindberg E, Elmasry A, Janson C, Gislason T. Reported snoring--does validity differ by age? *J Sleep Res* 2000;9:197-200.
50. Bliwise DL, Nekich JC, Dement WC. Relative validity of self-reported snoring as a symptom of sleep apnea in a sleep clinic population. *Chest* 1991;99:600-8.

### APPENDIX

#### **Definite coronary heart disease (CHD)**

1. Self-reported history of coronary artery bypass graft surgery, percutaneous coronary angioplasty, or carotid endarterectomy, OR
2. Self-reported history of myocardial infarction or angina and use of anti-angina meds, OR
3. Major Q wave abnormality on 12-lead electrocardiogram (ECG), OR

#### **Possible CHD**

1. Self-reported history of MI or angina, but no history of cardiovascular procedures stated above and no use of anti-angina medication, OR
2. Complete left bundle branch by 12-lead ECG.

#### **Definite congestive heart failure (CHF)**

Self-reported heart failure and use of diuretic and vasodilator drug or use of cardiac glycoside.

#### **Possible CHF**

Self-reported heart failure, but no use of diuretic, vasodilator and cardiac glycoside.