

# UC San Diego

## UC San Diego Previously Published Works

### Title

Social connectedness is associated with fibrinogen level in a human social network

### Permalink

<https://escholarship.org/uc/item/4681k8nj>

### Journal

Proceedings of the Royal Society B, 283(1837)

### ISSN

0962-8452

### Authors

Kim, David A  
Benjamin, Emelia J  
Fowler, James H  
[et al.](#)

### Publication Date

2016-08-31

### DOI

10.1098/rspb.2016.0958

Peer reviewed



## Research

**Cite this article:** Kim DA, Benjamin EJ, Fowler JH, Christakis NA. 2016 Social connectedness is associated with fibrinogen level in a human social network. *Proc. R. Soc. B* **283**: 20160958.  
<http://dx.doi.org/10.1098/rspb.2016.0958>

Received: 29 April 2016  
 Accepted: 1 August 2016

**Subject Areas:**

behaviour, health and disease  
 and epidemiology, physiology

**Keywords:**

social networks, social epidemiology,  
 fibrinogen, social hierarchy, stress response

**Author for correspondence:**

Nicholas A. Christakis  
 e-mail: [nicholas.christakis@yale.edu](mailto:nicholas.christakis@yale.edu)

Electronic supplementary material is available at <http://dx.doi.org/10.1098/rspb.2016.0958> or via <http://rspb.royalsocietypublishing.org>.

# Social connectedness is associated with fibrinogen level in a human social network

David A. Kim<sup>1</sup>, Emelia J. Benjamin<sup>2</sup>, James H. Fowler<sup>3</sup>  
 and Nicholas A. Christakis<sup>4</sup>

<sup>1</sup>Department of Emergency Medicine, Stanford University, 300 Pasteur Drive MC 5119, Stanford, CA 94305, USA

<sup>2</sup>The National Heart, Lung and Blood Institute & Boston University's Framingham Heart Study, 73 Mount Wayte Avenue, Framingham, MA 01702, USA

<sup>3</sup>Departments of Medicine and Political Science, University of California, San Diego, 9500 Gilman Drive #0521, La Jolla, CA 92093, USA

<sup>4</sup>Departments of Medicine, Ecology and Evolutionary Biology, and Sociology, Yale University, PO Box 208263, New Haven, CT 06520, USA

DAK, 0000-0003-0151-5121

Socially isolated individuals face elevated rates of illness and death. Conventional measures of social connectedness reflect an individual's perceived network and can be subject to bias and variation in reporting. In this study of a large human social network, we find that greater indegree, a sociocentric measure of friendship and familial ties identified by a subject's social connections rather than by the subject, predicts significantly lower concentrations of fibrinogen (a biomarker of inflammation and cardiac risk), after adjusting for demographics, education, medical history and known predictors of cardiac risk. The association between fibrinogen and social isolation, as measured by low indegree, is comparable to the effect of smoking, and greater than that of low education, a conventional measure of socioeconomic disadvantage. By contrast, outdegree, which reflects an individual's perceived connectedness, displays a significantly weaker association with fibrinogen concentrations.

## 1. Introduction

Many species exhibit social hierarchies, and individuals' positions within them can profoundly affect their lives and health [1]. Socially isolated humans face particularly elevated risks of illness and death [2–5]. Isolated individuals have higher rates of behavioural risk factors such as smoking, drinking to excess and overeating [6,7], but in aggregate such risk factors probably account only for a minority of the relationship between social position and health [8].

Chief among the health risks of social isolation are ischaemic heart disease and stroke [9]. These conditions, the two leading causes of death worldwide [10], result respectively from inadequate blood supply to the heart and brain. When the vascular endothelium is damaged by trauma, the exposure of sub-endothelial collagen and tissue factor triggers a cascade of reactions terminating in the conversion by thrombin of fibrinogen to fibrin, the principal constituent of clots (electronic supplementary material, figure S1) [11]. Though haemostasis is essential for survival, *excessive* generation of fibrin leads to *thrombosis*, the blockage of blood vessels that constitutes the final pathway of ischaemic heart disease and stroke.

Risk of thrombosis, in turn, is governed in part by *stress*. The mammalian stress response famously mobilizes bodily resources for 'fight or flight,' for instance by raising an animal's heart rate and blood pressure in order to divert energy to active skeletal muscle. The stress response also increases hepatic synthesis of fibrinogen, which promotes quicker cessation of bleeding when trauma is incurred [12,13]. But the stress reaction, while lifesaving in

the acute phase, can become pathologic when chronic. If blood pressure remains elevated beyond a period of increased muscular demand, atherosclerosis ensues; if the immune system is persistently stimulated, chronic inflammation may arise; and if coagulation factors are upregulated to clot wounds that never occur, pathologic thrombosis can result [14].

Indeed, elevated fibrinogen levels predict future ischaemic heart disease and stroke [15,16], and, as early as 1985, fibrinogen was identified as a possible link between disadvantaged social position and risk of cardiac death [17]. Fibrinogen has been linked to low occupational status, education and sense of control [18], as well as to perceptions of being socially undermined [19], and to self-reported loneliness and isolation [20].

Extant studies have assessed 'social position' with measures such as income and educational attainment, or with social relationships reported by the individuals themselves [21]. But if the social structures associated with stress are indeed phenomena that transcend the actions and perceptions of individuals alone [22], then a 'sociocentric' measure of social position, which maps the entire network and reflects social ties that may not be the same ties identified by the subject herself, may furnish a more ecologically valid measure of the relationship between social position and health. There is a meaningful difference, for instance, between the number of social contacts named by a subject (*outdegree*), and the number of contacts who themselves name that subject as a contact when queried (*indegree*). Outdegree is known to the subject, and reflects her perceived position in her network. Indegree, by contrast, is a *sociocentric* property that reflects the sum of all declared relationships incident on an individual, and can be reliably known only by assessing the whole network. While outdegree is likely to reflect the *perceived* support and status captured by conventional measures of social position, indegree may furnish a more accurate measure of the support and resources *received*. To our knowledge, prior work has not explored the relationship between a sociocentric measure of connectedness and a physiological marker of stress.

Here, we report on the relationship between degree centrality and levels of fibrinogen in a large human social network. We use whole network data for thousands of individuals to calculate the indegree and outdegree centrality of all individuals in the network. We adjust for education, demographics, medical history and known predictors of hypercoagulability to assess the relationship between social connectedness and fibrinogen, a principal biomarker of chronic stress, hypercoagulability and eventual cardiac death.

## 2. Material and methods

The Framingham Heart Study (FHS) is a community-based observational cohort study initiated in 1948. Detailed study design and selection criteria are described elsewhere [23]. The Framingham Offspring Study (FOS) began in 1971 with the recruitment of 5124 men and women who were offspring of the original FHS participants, or these offspring's spouses.

In each generation of the study, participants underwent routine medical histories and physical examinations, laboratory studies of cardiovascular risk factors and anthropometric measurements every 3–8 years. Recent waves of the study have included collection of a panel of biomarkers including fibrinogen.

Here, we use data from Wave 5 of the FOS, which ran from 23 January 1991 to 29 June 1995, and which included fibrinogen values for the greatest number of individuals ( $n = 3568$ ).

We construct a network of friendship and familial ties using administrative data, as previously described [7,24–26]. To best match the social network data to the dates of fibrinogen measurement, we include only ties initiated prior to 29 June 1995, and terminated after 23 January 1991 (the end and start dates of Wave 5 of the study, respectively). We include ties of the following types: friend, spouse, sibling, parent, child, cousin and other relative. We weight all ties equally. For all individuals with fibrinogen observations, we calculate total indegree (i.e. incoming nominations of all permitted types), friendship indegree, sibship size and total outdegree.

We first characterize fibrinogen as a function of basic demographic and health variables: age, sex, body mass index (BMI), smoking status, income and educational attainment. We then examine the bivariate relationships between fibrinogen levels and indegree, and fibrinogen and outdegree.

As biomarker levels can be partially heritable, the inclusion of familial ties in the network could induce clustering on fibrinogen levels, and thus correlated observations, for reasons unrelated to individuals' overall social connectedness. To mitigate the potential effects of such familial clustering, we assess for assortativity on fibrinogen [27], and include as a control in our statistical models the mean fibrinogen level of each individual's direct social contacts in the network.

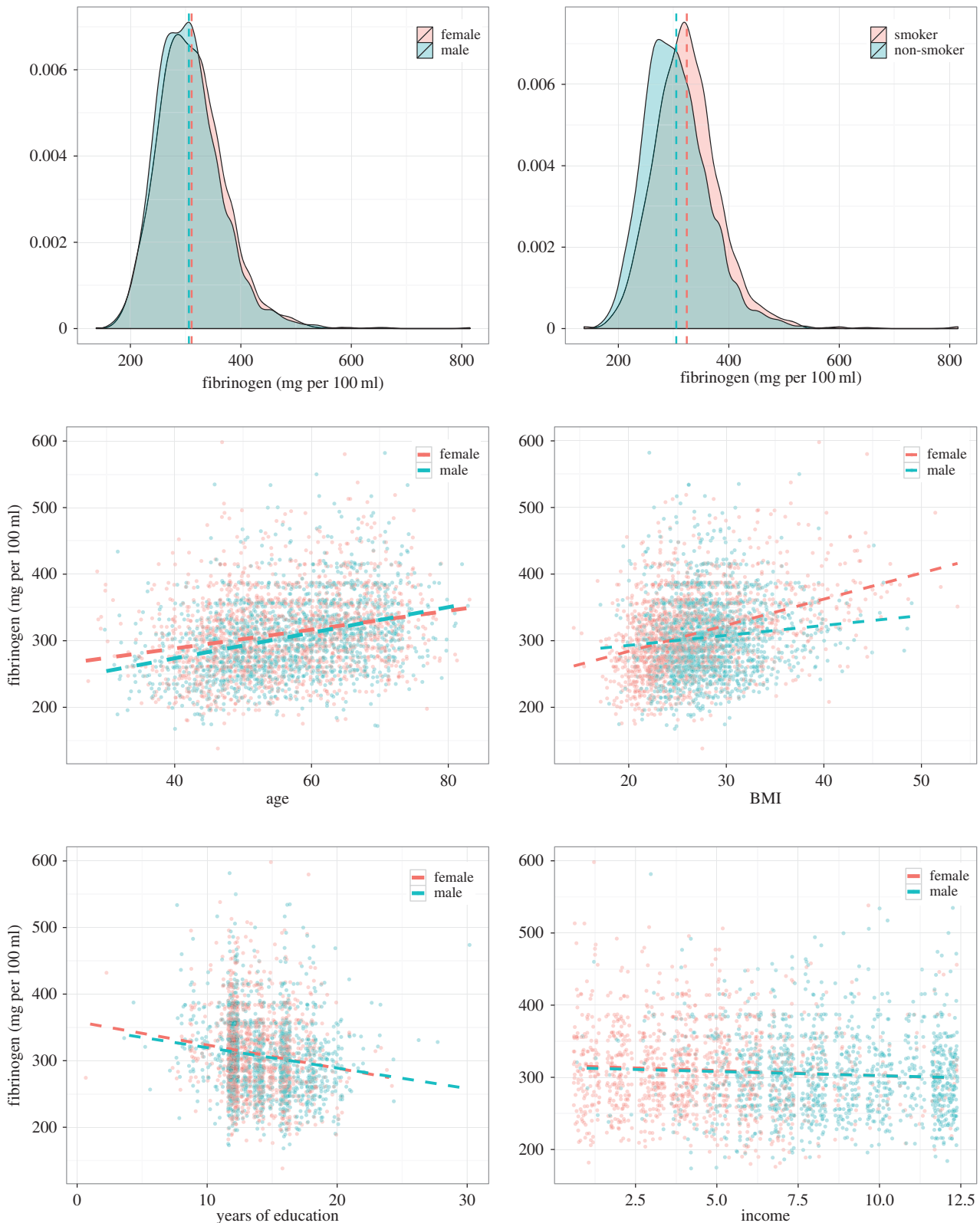
We estimate a series of linear models to characterize the relationship between indegree and fibrinogen. We regress fibrinogen levels on indegree, with and without  $\log_e$  transformations of both variables, and adjusting for age, sex, mean fibrinogen level of social contacts, educational attainment, self-reported smoking, use of cholesterol-lowering, antihypertensive and antidepressant medications, and medical risk factors including BMI, systolic and diastolic blood pressure, and levels of total and HDL cholesterol. We estimate additional models with indegree measures restricted to friendship or sibship ties. Finally, we estimate analogous models regressing fibrinogen on outdegree, a conventional egocentric measure of social connectedness.

## 3. Results

The social network at Wave 5 contains 22 633 individuals, connected via 45 286 friendship and familial ties. In total, 66.0% of individuals ( $n = 14 942$ ) are connected in the single largest component. Indegree values (number of incoming friendship and familial nominations) range from 0 to 28, with a median value of 4 (electronic supplementary material, figure S2). Outdegree (number of outgoing friendship and familial nominations) ranges from 2 to 32, with a median value of 10.

A total of 3568 individuals had fibrinogen measurements taken during the study period. Fibrinogen values range from 138 to 815 mg per 100 ml, with a median value of 303 mg per 100 ml (figure 1). Fibrinogen values are greater for women (two-sample  $t$ -test,  $p = 0.01$ ) and smokers ( $p < 0.0001$ ). Fibrinogen is positively correlated with age ( $r = 0.27$ ,  $p < 0.0001$ ) and BMI ( $r = 0.25$ ,  $p < 0.0001$ ), and negatively with years of formal education ( $r = -0.15$ ,  $p < 0.0001$ ) and with annual income in FOS Wave 3 (1983–1987,  $r = -0.07$ ,  $p = 0.0004$ ).

Fibrinogen levels are clustered in the network, with an assortativity coefficient [27] of 0.14. To account for correlated fibrinogen values across familial ties, we calculate the mean fibrinogen value of an individual's social contacts. A total of 87.8% (3134/3568) of individuals with fibrinogen



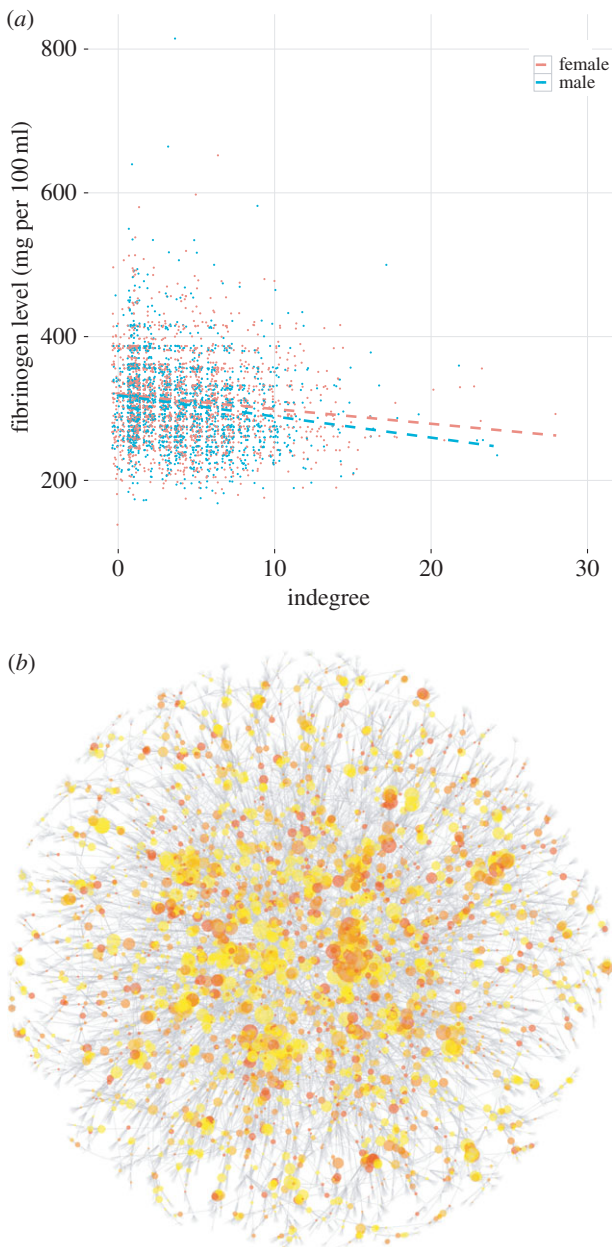
**Figure 1.** Relationship of fibrinogen to sex, age, BMI, smoking status, income and education. In total, 3568 individuals in Wave 5 of the Framingham Offspring Study have fibrinogen measurements. Fibrinogen values range from 138 to 815 mg per 100 ml, with a median value of 303 mg per 100 ml. Fibrinogen values are greater for women (two-sample  $t$ -test,  $p = 0.01$ ) and smokers ( $p < 0.0001$ ). Fibrinogen is positively correlated with age ( $r = 0.27$ ,  $p < 0.0001$ ) and BMI ( $r = 0.25$ ,  $p < 0.0001$ ), and negatively with years of formal education ( $r = -0.15$ ,  $p < 0.0001$ ) and with unadjusted annual income (in USD\$1000) in FOS Wave 3 (1983–1987,  $r = -0.07$ ,  $p = 0.0004$ ).

measurements have social contacts who also have fibrinogen measured. As expected, an individual's fibrinogen level is correlated with the mean fibrinogen level of her social contacts ( $r = 0.19$ ,  $p < 0.0001$ ).

Individuals nominated more often as friends and family members (i.e. with higher indegree) have lower levels of

fibrinogen (figure 2;  $r = -0.14$ ,  $p < 0.0001$ ). By contrast, out-degree (the number of social contacts named by a subject) is more weakly associated with the subject's fibrinogen level (electronic supplementary material, figure S3,  $r = -0.04$ ,  $p = 0.007$ ). The difference in correlations is significant at  $p < 0.0001$  (Fisher  $r$ -to- $z$  transformation [28]).





**Figure 2.** Socially isolated individuals exhibit higher levels of the clotting factor fibrinogen. Panel (a) shows the fibrinogen (mg per 100 ml) and indegree values for Wave 5 of the Framingham Offspring Study ( $n = 3568$  with fibrinogen measurements). Individuals nominated more often as friends and family members have lower levels of the clotting factor fibrinogen ( $r = -0.14$ ,  $p < 0.0001$ ). Points are jittered horizontally to better depict the density of the data around discrete values of indegree. Panel (b) shows the largest connected subcomponent of the social network, containing 66.0% of the individuals in the whole network. Of the 14 942 individuals in the largest component, 2451 (16.4%) have fibrinogen measurements. Redder colouring indicates higher fibrinogen levels, and yellower colouring indicates lower fibrinogen levels. Nodes in the component without fibrinogen measurements (used for calculation of centrality measures and for layout of the graph) are depicted minimally in pale grey. Node size is proportional to indegree. The network is laid out using the Fruchterman–Reingold algorithm, tuned for greater repulsion between nodes. Low-fibrinogen (yellower) individuals tend to have higher indegree (larger diameter) and to be globally or locally central, whereas a preponderance of high-fibrinogen (redder) individuals have lower indegree (smaller diameter) and are relatively more isolated in the social network.

We estimate a series of linear models regressing fibrinogen levels on indegree, adjusting for age, sex, years of education (a conventional measure of social position), and a

host of cardiovascular risk factors and related medication use (electronic supplementary material, table S1). In a minimal model adjusting for age, sex and education, the relationship between indegree and fibrinogen is such that the most highly connected people in the network are predicted to have 0.96 s.d. lower fibrinogen values than the least connected ( $p < 0.0001$ , Model 1a). Adjusting for cardiac risk factors and medication use attenuates the relationship between indegree and fibrinogen by 2% (Model 1b). When accounting additionally for the mean fibrinogen levels of an individual's social contacts, the relationship between indegree and fibrinogen is attenuated further by 6%, remaining highly significant ( $p < 0.0001$ , Model 2a).

When including only friendship ties in the calculation of indegree, individuals with the most friend nominations are predicted to have 0.40 s.d. lower fibrinogen than those with none ( $p < 0.0001$ , Model 2b). When including only sibship ties, individuals from the largest sibships are predicted to have 0.45 s.d. lower fibrinogen than those from the smallest ( $p < 0.0001$ , Model 2c). Thus, it appears that friendship and sibship contribute additively to the relationship between connectedness and fibrinogen levels.

We estimate models in which we  $\log_e$ -transform values of indegree, fibrinogen or both. In all cases, the estimated relationship between indegree and fibrinogen, net of all controls, is negative and highly significant ( $p < 0.0001$ ). When re-transforming the coefficient estimates, their substantive magnitudes, measured in terms of standard deviations of fibrinogen, are attenuated from Model 2a by 21% when  $\log_e$ -transforming both indegree and fibrinogen (Model 3a), or indegree alone.  $\log_e$ -transformation of fibrinogen alone (Model 3b) has no effect compared with the primary, untransformed Model 2a.

In analogous models regressing fibrinogen levels on outdegree (electronic supplementary material, table S2), the relationship between outdegree and fibrinogen is such that the individuals nominating the most friends and family members are predicted to have 0.50 s.d. lower fibrinogen values than those nominating the fewest, after adjusting for age, sex, education and known cardiac risk factors ( $p < 0.0001$ , Model 4). Adjusting for the fibrinogen levels of social contacts attenuates the relationship between outdegree and fibrinogen by 9% (Model 5a). When including only friendship ties, outdegree is not significantly associated with fibrinogen (Model 5b).

## 4. Discussion

Many species, humans included, inhabit complex social structures of dominance and support [29,30] and individuals' positions within these structures can profoundly affect their lives and health [1]. The soluble protein fibrinogen, which permits wound healing in health and thrombosis in disease, is a marker for both coronary risk [16] as well as self-reported isolation and stress [18,20], but has not previously been studied in relation to a sociocentric measure of connectedness. Here, we report on the relationship between degree centrality and levels of fibrinogen in a large human social network. Adjusting for education, demographics, known medical predictors of hypercoagulability, and the fibrinogen levels of an individual's social contacts, a greater number of incoming friendship and familial ties predicts significantly lower levels of fibrinogen.

The magnitude of the relationship is considerable, with social isolation (i.e. low indegree) in our study population, net of controls, predicting elevations in fibrinogen comparable to the effect of smoking. In our models, an additional social connection predicts a greater decrement in fibrinogen than even an additional year of education. Educational attainment is among the most robust and predictive measures of social status as it relates to health [31,32]. Thus, the inclusion of educational attainment as a control in our models allows us to evaluate the relationship between social connectedness and fibrinogen net of socioeconomic status as conventionally defined.

Our basic descriptive analyses of fibrinogen with respect to sex, age and education are consistent with previous studies [18], and the basic direction of the indegree finding is consistent with the vast literature on the socioeconomic gradient in health [33,34]. As in previous studies, smoking accounts for some but not all of the social gradient in fibrinogen [18,35].

What, then, is added by the use of a sociocentric measure of connectedness? Research on social isolation and mortality has conventionally treated networks *egocentrically*, with the structure and function of networks assessed from the individual's perspective [9]. Though the power of these measures to predict health outcomes is indisputable, what the measures actually mean has been open to much debate, with 'networks' often invoked more as metaphor than as measurement [9,36]. In our analyses, greater social connectedness, as measured by the sociocentric measure *indegree* (the number of times an individual is nominated as a friend or family member by others in the network) is associated with substantially lower levels of fibrinogen. The link between social connectedness and lower fibrinogen reflects independently significant effects of friendship and familial ties, suggesting that different sources of indegree contribute additively to its protective effect. This finding is consistent with research in non-human primates, in which an aggregate measure of connectedness is more predictive of health than a single form of affiliation [37].

By contrast, *outdegree* (the number of social contacts named by an individual), despite its similar range to indegree in the data, is significantly less predictive of fibrinogen values, and the association vanishes when stratifying by relationship type. While outdegree signals the *perceived* support and status captured by conventional measures of social connectedness, indegree is more likely to reflect the social support, resources and recognition an individual actually *receives*. Furthermore, indegree is, by definition, less subject to individual variation in the perception and reporting of the psychosocial environment (such as potential gender effects on the self-reporting of social connections), or to cultural or socioeconomic differences in the 'self-enhancement' bias [38].

Social network position has also been theorized to be associated with other features of individuals, such as immunity and personality [39–41]. Being central or peripheral in the social network would, in principle, expose a person to different types of infection risk, and may therefore correlate with both immune genes and function. In this way, diverse physiological (and psychological) phenotypes may be distributed in meaningful ways across human social networks.

Though human and non-human sociality differ in obvious ways, the association between indegree and fibrinogen we observe may have biological relevance beyond

humans alone. Though social dominance hierarchies are known to affect the health of their members, most notably in non-human primates [1], recent evidence has also demonstrated affiliative, non-hierarchical and non-kin relationships in primates, birds, ungulates and cetaceans [42]. Such relationships lend themselves to sociocentric network analyses of the type we deploy here [43]. Because the coagulation cascade itself is highly conserved across mammals [44], non-human friendship networks may also modulate fibrinogen and other biomarkers of coagulation and inflammation, although as non-human ties are ascertained through observation rather than nomination, determining the potential directedness of these ties (in order, for instance, to distinguish between indegree and outdegree, as we do here) may require novel ethological methods.

Our study has limitations. The study population of the FHS is exclusively American and predominantly white, and our findings may not generalize to other settings or groups. The FHS social network dataset also has well-known limitations, although these data are still of extremely high quality [45]. More importantly, causal inferences cannot be drawn from a cross-sectional design. Social connectedness or isolation may alter the stress response and thereby change the physiologic set point of fibrinogen and other biomarkers [46,47]. But it may also be the case that disadvantaged individuals, perhaps via early life factors [18], develop both higher fibrinogen and fewer social connections. Future work will benefit from longitudinal measurements of both network position and inflammatory biomarkers across the lifecourse.

More generally, while our study specifies social connectedness more precisely than previous work, the mechanisms through which social connectedness may mediate fibrinogen remain subject to debate. Indegree differences in fibrinogen must reflect indegree differences in the determinants of fibrinogen. Our analyses isolate a robust relationship between social connectedness and fibrinogen net of age, sex, education and conventional predictors of hypercoagulability and cardiac risk, but the specific exposures or resources through which indegree may mediate fibrinogen remain to be shown. Does the relationship between indegree and fibrinogen reflect social support, social influence, social engagement, access to social or material resources or another mechanism altogether?

The now-ubiquitous concept of the coronary 'risk factor' originated with the FHS [48]. But while such risk factors have overwhelmingly measured proximate behavioural and biological markers, research on the social determinants of health has identified persistent effects of socioeconomic processes difficult to reconcile with a biomedical approach. How do social phenomena like 'status' and 'support' translate to the physiologic mechanisms of disease? The causal question is complicated by the variegated and often figurative operationalizations of the concept of 'social position' [9]. By specifying social position and connectedness precisely, reproducibly and independently of individual biases in self-report, network analysis can help connect the 'macro' level of social structure to the 'micro' level psychobiologic mechanisms through which adverse or protective exposures become manifest in individual health and disease.

**Ethics.** This study was approved by the Yale University Institutional Review Board (Protocol no. 1306012263). All FHS participants provided written informed consent.

**Data accessibility.** The FHS is conducted and supported by the National Heart, Lung and Blood Institute in collaboration with Boston University (Contract N01-HC-25195). The data used in this study are available on request from the FHS (<https://www.framinghamheart-study.org/researchers/application-review.php>).

**Authors' contributions.** D.A.K., J.H.F. and N.A.C. conceived of the study. D.A.K. and N.A.C. drafted the manuscript and J.H.F. and E.J.B. contributed critical revisions. D.A.K., N.A.C., E.J.B. and J.H.F. contributed to data collection and preparation. D.A.K. performed

the statistical analyses and produced the figures. All authors gave final approval for publication.

**Competing interests.** We declare we have no competing interests.

**Funding.** This work was supported by NIH grant no. P01AG31093 and by the National Institute on Aging. D.A.K. was supported by the Canadian Institutes of Health Research. The FHS is supported by HHSN268201500001I and N01-HC 25195.

**Acknowledgements.** We thank Chris O'Donnell for his contributions to data collection, and Laurie Meneades for her help in data preparation.

## References

- Sapolsky RM. 2005 The influence of social hierarchy on primate health. *Science* **308**, 648–652. (doi:10.1126/science.1106477)
- Berkman LF, Syme SL. 1979 Social networks, host resistance, and mortality: a nine-year follow-up study of Alameda County residents. *Am. J. Epidemiol.* **109**, 186–204.
- House JS, Robbins C, Metzner HL. 1982 The association of social relationships and activities with mortality: prospective evidence from the Tecumseh Community Health Study. *Am. J. Epidemiol.* **116**, 123–140.
- Holt-Lunstad J, Smith TB, Layton JB. 2010 Social relationships and mortality risk: a meta-analytic review. *PLoS Med.* **7**, e1000316. (doi:10.1371/journal.pmed.1000316)
- Yang YC, Boen C, Gerken K, Li T, Schorpp K, Harris KM. 2016 Social relationships and physiological determinants of longevity across the human life span. *Proc. Natl Acad. Sci. USA* **113**, 578–583. (doi:10.1073/pnas.1511085112)
- Lynch JW, Kaplan GA, Salonen JT. 1997 Why do poor people behave poorly? Variation in adult health behaviours and psychosocial characteristics by stages of the socioeconomic lifecourse. *Social Sci. Med.* **44**, 809–819. (doi:10.1016/S0277-9536(96)00191-8)
- Christakis NA, Fowler JH. 2008 The collective dynamics of smoking in a large social network. *N. Engl. J. Med.* **358**, 2249–2258. (doi:10.1056/NEJMs0706154)
- Wilkinson RG. 2000 *Mind the gap: hierarchies, health and human evolution*. London, UK: Weidenfeld & Nicholson.
- Berkman LF, Glass T. 2000 Social integration, social networks, social support, and health. In *Social epidemiology* (eds LF Berkman, I Kawachi), pp. 137–173. Oxford, UK: Oxford University Press.
- Lozano R *et al.* 2012 Global and regional mortality from 235 causes of death for 20 age groups in 1990 and 2010: a systematic analysis for the Global Burden of Disease Study 2010. *Lancet* **380**, 2095–2128. (doi:10.1016/S0140-6736(12)61728-0)
- Furie B, Furie BC. 2008 Mechanisms of thrombus formation. *N. Engl. J. Med.* **359**, 938–949. (doi:10.1056/NEJMra0801082)
- Stuart J. 1984 The acute-phase reaction and haematological stress syndrome in vascular disease. *Int. J. Microcirc. Clin. Exp.* **3**, 115–129.
- Desborough JP. 2000 The stress response to trauma and surgery. *Br. J. Anaesth.* **85**, 109–117. (doi:10.1093/bja/85.1.109)
- Sapolsky RM. 2004 Social status and health in humans and other animals. *Annu. Rev. Anthropol.* **33**, 393–418. (doi:10.1146/annurev.anthro.33.070203.144000)
- Brunner EJ. 2000 Toward a new social biology. In *Social epidemiology* (eds LF Berkman, I Kawachi), pp. 306–331. Oxford, UK: Oxford University Press.
- Danesh J, Collins R, Appleby P, Peto R. 1998 Association of fibrinogen, c-reactive protein, albumin, or leukocyte count with coronary heart disease: meta-analyses of prospective studies. *JAMA* **279**, 1477–1482. (doi:10.1001/jama.279.18.1477)
- Markowe HLJ, Marmot MG, Shipley MJ, Bulpitt CJ, Meade TW, Stirling Y, Vickers MV, Semmence A. 1985 Fibrinogen: a possible link between social class and coronary heart disease. *Br. Med. J. (Clin. Res. Ed.)* **291**, 1312–1314. (doi:10.2307/29521203)
- Brunner EJ, Marmot M, Canner R, Beksinska M, Davey Smith G, O'Brien J. 1996 Childhood social circumstances and psychosocial and behavioural factors as determinants of plasma fibrinogen. *Lancet* **347**, 1008–1013. (doi:10.1016/S0140-6736(96)90147-6)
- Davis MC, Swan PD. 1999 Association of negative and positive social ties with fibrinogen levels in young women. *Health Psychol.* **18**, 131–139. (doi:10.1037/0278-6133.18.2.131)
- Steptoe A, Owen N, Kunz-Ebrecht SR, Brydon L. 2004 Loneliness and neuroendocrine, cardiovascular, and inflammatory stress responses in middle-aged men and women. *Psychoneuroendocrinology* **29**, 593–611. (doi:10.1016/S0306-4530(03)00086-6)
- Lynch JW, Kaplan GA. 2000 Socioeconomic position. In *Social epidemiology* (eds LF Berkman, I Kawachi), pp. 13–35. Oxford, UK: Oxford University Press.
- Chase ID, Tovey C, Spangler-Martin D, Manfredonia M. 2002 Individual differences versus social dynamics in the formation of animal dominance hierarchies. *Proc. Natl Acad. Sci. USA* **99**, 5744–5749. (doi:10.1073/pnas.082104199)
- Kannel WB, Feinleib M, McNamara PM, Garrison RJ, Castelli WP. 1979 An investigation of coronary heart disease in families. *Am. J. Epidemiol.* **110**, 281–290.
- Christakis NA, Fowler JH. 2007 The spread of obesity in a large social network over 32 years. *N. Engl. J. Med.* **357**, 370–379. (doi:10.1056/NEJMs066082)
- Cacioppo JT, Fowler JH, Christakis NA. 2009 Alone in the crowd: the structure and spread of loneliness in a large social network. *J. Pers. Soc. Psychol.* **97**, 977–991. (doi:10.1037/a0016076)
- Rosenquist JN, Murabito J, Fowler JH, Christakis NA. 2010 The spread of alcohol consumption behavior in a large social network. *Ann. Intern. Med.* **152**, 426–433. (doi:10.1059/0003-4819-152-7-201004060-00007)
- Newman MEJ. 2002 Assortative mixing in networks. *Phys. Rev. Lett.* **89**, 208701. (doi:10.1103/PhysRevLett.89.208701)
- Kenny DA. 1987 *Testing measures of association. In statistics for the social and behavioral sciences*. Boston, MA: Little, Brown.
- Boehm C. 1999 *Hierarchy in the forest: the evolution of egalitarian behavior*. Cambridge, MA: Harvard University Press.
- Krause J, James R, Franks D, Croft D. 2015 *Animal social networks*. Oxford, UK: Oxford University Press.
- Cutler D, Deaton A, Lleras-Muney A. 2006 The determinants of mortality. *J. Econ. Perspect.* **20**, 97–120. (doi:10.1257/jep.20.3.97)
- Link BG, Phelan JC. 1995 Social conditions as fundamental causes of disease. *J. Health Soc. Behav.* **35**, 80–94. (doi:10.2307/2626958)
- Marmot M. 2004 *Status syndrome: how social standing affects our health and longevity*. London, UK: Bloomsbury.
- Wilkinson RG, Pickett KE. 2008 Income inequality and socioeconomic gradients in mortality. *Am. J. Public Health* **98**, 699–704. (doi:10.2105/ajph.2007.109637)
- Brunner EJ, Marmot MG, White IR, O'Brien JR, Etherington MD, Slavin BM, Kearney EM, Davey Smith G. 1993 Gender and employment grade differences in blood cholesterol, apolipoproteins and haemostatic factors in the Whitehall II study. *Atherosclerosis* **102**, 195–207. (doi:10.1016/0021-9150(93)90162-N)
- Smith KP, Christakis NA. 2008 Social networks and health. *Annu. Rev. Soc.* **34**, 405–429. (doi:10.1146/annurev.soc.34.040507.134601)
- Sapolsky RM, Alberts SC, Altmann J. 1997 Hypercortisolism associated with social subordination or social isolation among wild

- baboons. *Arch. Gen. Psychiatry* **54**, 1137–1143. (doi:10.1001/archpsyc.54.12.1137)
38. Loughnan S *et al.* 2011 Economic inequality is linked to biased self-perception. *Psychol. Sci.* **22**, 1254–1258. (doi:10.1177/0956797611417003)
39. Fowler JH, Settle JE, Christakis NA. 2011 Correlated genotypes in friendship networks. *Proc. Natl Acad. Sci. USA* **108**, 1993–1997. (doi:10.1073/pnas.1011687108)
40. Christakis NA, Fowler JH. 2014 Friendship and natural selection. *Proc. Natl Acad. Sci. USA* **111**, 10 796–10 801. (doi:10.1073/pnas.1400825111)
41. Fowler JH, Dawes CT, Christakis NA. 2009 Model of genetic variation in human social networks. *Proc. Natl Acad. Sci. USA* **106**, 1720–1724. (doi:10.1073/pnas.0806746106)
42. Brent LJN, Chang SWC, Gariépy J-F, Platt ML. 2014 The neuroethology of friendship. *Ann. N. Y. Acad. Sci.* **1316**, 1–17. (doi:10.1111/nyas.12315)
43. Gilby IC, Brent LJN, Wroblewski EE, Rudicell RS, Hahn BH, Goodall J, Pusey AE. 2013 Fitness benefits of coalitionary aggression in male chimpanzees. *Behav. Ecol. Sociobiol.* **67**, 373–381. (doi:10.1007/s00265-012-1457-6)
44. Michelson AD. 2011 *Platelets*, 2nd edn. London, UK: Academic Press.
45. Christakis NA, Fowler JH. 2013 Social contagion theory: examining dynamic social networks and human behavior. *Stat. Med.* **32**, 556–577. (doi:10.1002/sim.5408)
46. Schulkin J. 2003 Allostasis: a neural behavioral perspective. *Horm. Behav.* **43**, 21–27. (doi:10.1016/s0018-506x(02)00035-1)
47. Sterling P, Eyer J. 1988 Allostasis: a new paradigm to explain arousal pathology. In *Handbook of life stress, cognition and health* (eds S Fisher, J Reason), pp. 629–649. New York, NY: John Wiley & Sons.
48. Kannel WB, Dawber TR, Kagan A, Revotskie N, Stokes JJ. 1961 Factors of risk in the development of coronary heart disease—six-year follow-up experience: the Framingham study. *Ann. Intern. Med.* **55**, 33–50. (doi:10.7326/0003-4819-55-1-33)