

# UC San Diego

## UC San Diego Previously Published Works

### Title

Transcriptional networks specifying homeostatic and inflammatory programs of gene expression in human aortic endothelial cells

### Permalink

<https://escholarship.org/uc/item/47m528h0>

### Authors

Hogan, Nicholas T  
Whalen, Michael B  
Stolze, Lindsey K  
[et al.](#)

### Publication Date

2017

### DOI

10.7554/elife.22536

Peer reviewed

# Transcriptional networks specifying homeostatic and inflammatory programs of gene expression in human aortic endothelial cells

Nicholas T Hogan<sup>1</sup>, Michael B Whalen<sup>2</sup>, Lindsey K Stolze<sup>2</sup>, Nizar K Hadeli<sup>2</sup>, Michael T Lam<sup>1</sup>, James R Springstead<sup>3</sup>, Christopher K Glass<sup>1</sup>, Casey E Romanoski<sup>2\*</sup>

<sup>1</sup>Department of Cellular and Molecular Medicine, University of California, San Diego, San Diego, United States; <sup>2</sup>Department of Cellular and Molecular Medicine, University of Arizona, Tucson, United States; <sup>3</sup>Department of Chemical and Paper Engineering, University of Western Michigan, Kalamazoo, United States

**Abstract** Endothelial cells (ECs) are critical determinants of vascular homeostasis and inflammation, but transcriptional mechanisms specifying their identities and functional states remain poorly understood. Here, we report a genome-wide assessment of regulatory landscapes of primary human aortic endothelial cells (HAECs) under basal and activated conditions, enabling inference of transcription factor networks that direct homeostatic and pro-inflammatory programs. We demonstrate that 43% of detected enhancers are EC-specific and contain SNPs associated to cardiovascular disease and hypertension. We provide evidence that AP1, ETS, and GATA transcription factors play key roles in HAEC transcription by co-binding enhancers associated with EC-specific genes. We further demonstrate that exposure of HAECs to oxidized phospholipids or pro-inflammatory cytokines results in signal-specific alterations in enhancer landscapes and associate with coordinated binding of CEBPD, IRF1, and NFκB. Collectively, these findings identify cis-regulatory elements and corresponding trans-acting factors that contribute to EC identity and their specific responses to pro-inflammatory stimuli.

DOI: [10.7554/eLife.22536.001](https://doi.org/10.7554/eLife.22536.001)

\*For correspondence:  
[cromanoski@email.arizona.edu](mailto:cromanoski@email.arizona.edu)

Competing interest: See  
[page 23](#)

Funding: See [page 23](#)

Received: 20 October 2016

Accepted: 22 May 2017

Published: 06 June 2017

Reviewing editor: Manuel Garber, University of Massachusetts Medical School

© Copyright Hogan et al. This article is distributed under the terms of the [Creative Commons Attribution License](#), which permits unrestricted use and redistribution provided that the original author and source are credited.

## Introduction

Atherosclerosis is an inflammatory disease of large arteries mediated by the accumulation of plaque within the vessel wall. Through sequelae such as heart attack, stroke, and peripheral vascular disease, it is responsible for an immense burden of morbidity and mortality. The pathogenesis of atherosclerosis involves several cell types and environmental risk factors (Lusis, 2000; Glass and Witztum, 2001). One of the critical cell types is the arterial endothelial cell (EC). The onset of atherosclerosis involves the activation of ECs by pro-inflammatory micro-environmental exposures including hemodynamic turbulence, oxidized-specific epitopes, and inflammatory cytokines (Tabas et al., 2015). These inflammatory stimuli result in the expression of adhesion molecules on the luminal EC surface and rolling, attachment, and migration of leukocytes into the vessel wall. Sustained recruitment and accumulation of immune cells in the vessel wall leads to extracellular matrix remodeling, smooth muscle cell migration, and the development of necrotic debris. Acute plaque rupture can result in sudden vascular occlusion, leading to heart attack or stroke.

Genome-wide association studies have identified more than 50 loci that predispose humans to cardiovascular disease (CVD) (Nikpay et al., 2015), of which the major cause is atherosclerosis. The

majority of CVD loci reside outside protein-coding regions of the genome, suggesting that the risk variants alter gene regulatory function (Hindorff et al., 2009; Manolio, 2010). Still, the target genes, pathways, and cell types of action are largely unknown due to challenges in linking regulatory variants to function. A major challenge is that mammalian genomes contain upwards of a million potential regulatory elements called *enhancers*, yet a given cell type only utilizes on the order of tens of thousands of active enhancers (ENCODE Project Consortium, 2012; Andersson et al., 2014). This makes it difficult to accurately predict the functional cell systems and units of regulation from sequence alone (Shlyueva et al., 2014).

An important insight into enhancer biology is the observation that unique combinations of a few transcription factors (TFs) together activate cell-type-specific enhancers. Enhancer priming by TFs is both collaborative, (such that one TF will not bind its DNA motif if the motif for a collaborating TF is mutated [Heinz et al., 2013]), and hierarchical (the majority of sites bound by newly abundant TFs occur at enhancers pre-bound by collaborating TFs [Heinz et al., 2015; Romanoski et al., 2015; Kaikkonen et al., 2013]). This model is perhaps best characterized in the hematopoietic system and with toll-like receptor 4 signaling (Heinz et al., 2013; Kaikkonen et al., 2013; Heinz et al., 2010). For example, myeloid-specific enhancer activation and cell differentiation requires the TF PU.1 in combination with C/EBP $\beta$ , whereas B cells require PU.1 in combination with EBF and E2A (Heinz et al., 2010).

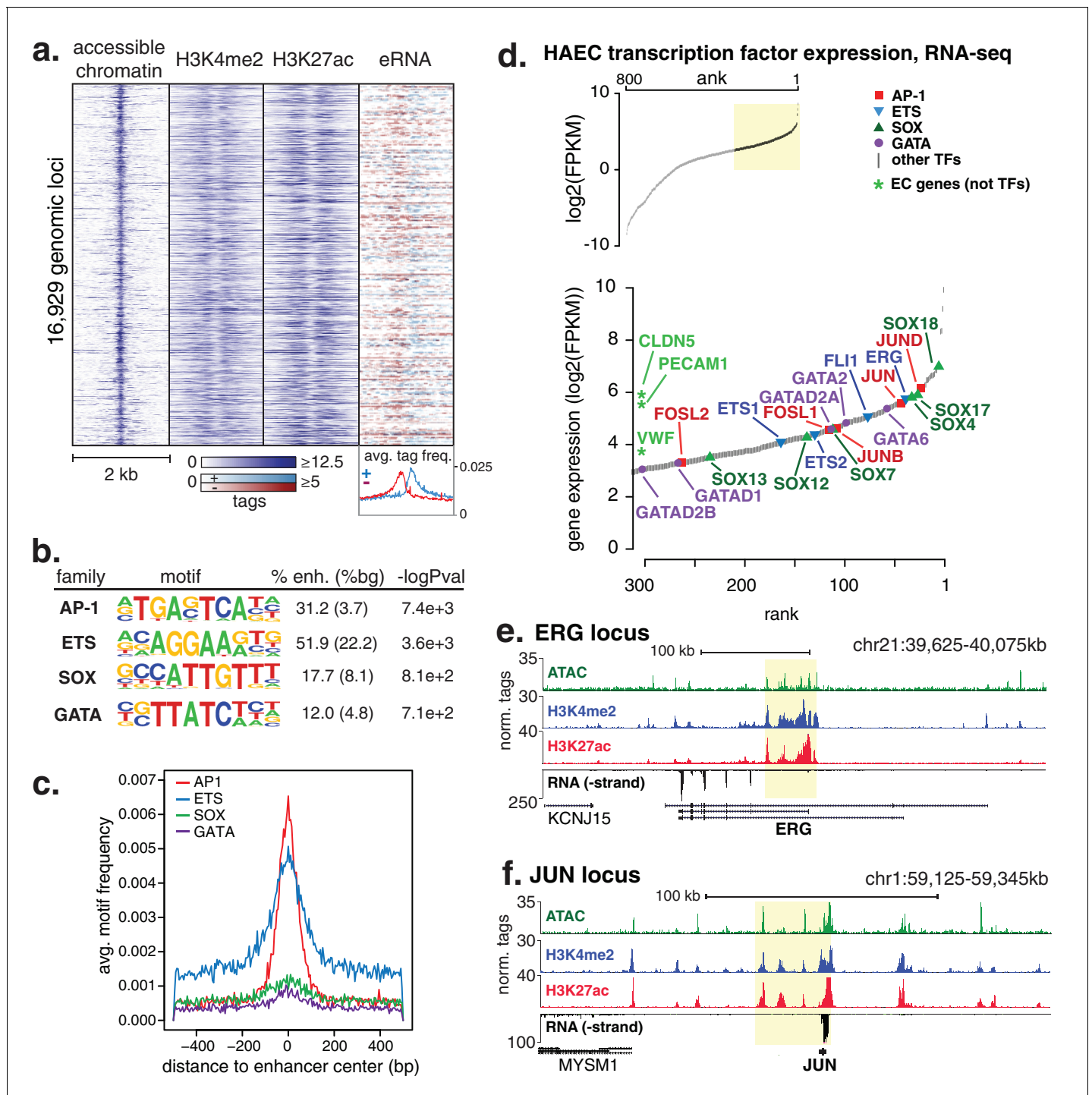
In the current study, we take a genome-wide approach using DNA variation, epigenetic, and transcriptomic data to identify the major TF families that coordinate human aortic endothelial cell (HAEC) gene expression in homeostasis and upon exposure to prototypic inflammatory stimuli characteristic of atherosclerosis. Using a combination of experimental and computational approaches, we find that members of the ETS and AP1 TF families bind EC enhancers and that removing ETS member ERG elicits an inflammatory profile. We demonstrate that many enhancers identified in ECs are cell type-specific and several enhancers overlap with SNPs that have been associated to coronary artery disease (CAD) and hypertension. In addition, we demonstrate that TFs NRF2, NF $\kappa$ B, CEBD, and IRF1 are signal-dependent TFs that mediate the EC response to inflammatory stimuli.

## Results

### Transcription factors in the AP1 and ETS families dominate the enhancer landscape in HAECs

A total of 16,929 high-confidence enhancer-like elements were mapped in HAECs (Figure 1a) using chromatin immunoprecipitation followed by high-throughput sequencing (ChIP-seq) to identify promoter-distal elements marked by significant levels of histone H3 di-methylation of lysine 4 (H3K4me<sub>2</sub>) and acetylation of lysine 27 (H3K27ac) that together mark active enhancers (Heintzman et al., 2007; Creyghton et al., 2010; Rada-Iglesias et al., 2011). Chromatin accessibility, measured by Assay for Transposase Accessible Chromatin with high-throughput sequencing (ATAC-seq [Buenrostro et al., 2013]), was used to center the enhancer-like regions. The position within the element with the maximum signal that reflects greatest accessibility was used for centering. Using public global nuclear run-on sequencing (GRO-seq) data in HAECs (Kaikkonen et al., 2014), we observed that our set of enhancer-like loci produced bi-directional nascent RNA transcripts, or enhancer RNAs (eRNAs), as evidenced by the red and blue strand-specific RNA signals in Figure 1a. The potential function of eRNAs is not understood; however, eRNA output is robustly correlated with enhancer activity (Kaikkonen et al., 2014; Lam et al., 2013; De Santa et al., 2010; Kim et al., 2010), further supporting our enhancer set as active EC enhancers (Figure 1a).

We hypothesized that the major TFs that select and maintain enhancers in HAECs would be evident via enrichment of binding motifs in enhancer DNA sequences. Thus, we performed de novo motif enrichment analysis and discovered that AP1, ETS, SOX and GATA motifs were significantly enriched ( $-\log P$ values > 7.1e2) in HAEC enhancers compared to random GC-matched genomic background sequence (Figure 1b, comprehensive list in Figure 1—figure supplement 1). Based on previous evidence (Heinz et al., 2013), we expected for functional motifs to be enriched near the maximum signal for chromatin accessibility. Indeed, AP1 and ETS were most frequently observed near the signal maximum, whereas the relationships for SOX and GATA motifs were less pronounced



**Figure 1.** HAECs display a distinct repertoire of enhancers that nominate combinations of the AP1, ETS, SOX and GATA TF families as major orchestrators of HAEC gene expression. (a) A heatmap of 16,929 enhancer-like regions were selected by: accessible chromatin (ATAC-seq), coincident with H3K4me2 and H3K27ac deposition (ChIP-seq) in gene-distal positions ( $\geq 3$  kb from promoters). Rows are enhancer loci, repeated for each data type in columns. Bidirectional transcription of enhancer RNAs (eRNAs) is also evident (GRO-seq). (b) The top four enriched motifs that occur in enhancers from a are shown. The transcription factor (TF) family, de novo motif matrix, percentage motif occurrence at enhancer loci versus random loci, and enrichment  $-\log P$  values are indicated. Enrichment was calculated from 200 bp sequence, centered on chromatin accessibility. (c) The positional enrichment of the enriched motifs are shown relative to the center of the enhancer-like elements from a, where 0 bp is the center of the accessibility signal. (d) Gene expression measured by RNA-seq and limited to TFs is ranked by FPKM values to nominate the most highly expressed TFs in the AP1, ETS, SOX, and GATA families. (e, f) RNA expression, histone modifications, and super enhancer (SE) definitions are shown for: (e) ERG and (f) JUN loci. SE regions are highlighted in yellow and were defined using H3K27ac. More related data in **Figure 1—figure supplements 1–3**.

Figure 1 continued on next page

Figure 1 continued

DOI: [10.7554/eLife.22536.002](https://doi.org/10.7554/eLife.22536.002)

The following figure supplements are available for figure 1:

**Figure supplement 1.** Analysis of motifs and expression of associated transcription factors.

DOI: [10.7554/eLife.22536.003](https://doi.org/10.7554/eLife.22536.003)

**Figure supplement 2.** Genetic loci for JUN, JUNB, and JUND.

DOI: [10.7554/eLife.22536.004](https://doi.org/10.7554/eLife.22536.004)

**Figure supplement 3.** Hierarchical clustering of enhancers.

DOI: [10.7554/eLife.22536.005](https://doi.org/10.7554/eLife.22536.005)

(**Figure 1c**). These data nominate roles for AP1 and ETS TF members as important mediators of the HAEC enhancer landscape.

Tens of genes encode proteins of the AP1, ETS, SOX and GATA TF families. Within each family different members share nearly identical DNA-binding domains and thus bind the same motif. In addition, AP1 protein members bind AP1 motifs as homo- and hetero-dimers. These sources of redundancy make it challenging to identify the functional family member(s) without additional information. To narrow the search in HAECs, we hypothesized that the operational TFs would be highly expressed and that their genetic loci would contain super-enhancers (SEs), or unusually dense clusters of highly decorated enhancers (*Hnisz et al., 2013*). Characterization of enhancer marks across cell-types has found SEs to be frequently located at loci encoding lineage-defining TFs (*Whyte et al., 2013; Downen et al., 2014*). We queried rank-ordered expression data for TF family members and found that multiple members of each group were highly expressed (**Figure 1d**). For example, SOX members SOX18, SOX4, and SOX17 were among the top 4% most expressed TFs in HAECs. AP1 family members JUND, JUN, and JUNB were also in the top 4%. RNA-seq from other HAEC donors and replicate samples confirmed these findings (**Figure 1—figure supplement 1**). Next, we defined SEs using H3K27ac ChIP-seq data and found that, among others, the genetic loci for ERG (an ETS member) as well as AP1 members JUN, JUND, and JUNB harbored SEs (**Figure 1e, f, Figure 1—figure supplement 2**). Taken together, these data suggest that while multiple TFs from each family probably bind HAEC enhancers, that JUN, JUNB, JUND, and ERG likely serve prominent roles.

### Roughly half of HAEC enhancers are endothelial-specific

To investigate which enhancer-like elements discovered in HAECs were specific to ECs, we analyzed public H3K27ac ChIP-seq datasets from ENCODE (*ENCODE Project Consortium, 2012*) and Roadmap Epigenomics consortia (*Kundaje et al., 2015*). Considering ECs are present in nearly all tissues, we focused on data collected in single cell types with the exception of 'aorta', 'right ventricle', 'left ventricle', and 'right atrium' that were included to observe their relationship to aortic endothelium. A total of 61 datasets were analyzed (**Supplementary file 1**). Human umbilical vein ECs, or HUVECs, were the only other EC type in the analysis. H3K27ac ChIP-seq tags were counted and normalized in each experiment at the 16,929 HAEC-defined enhancer loci. Hierarchical clustering resolved three distinct clusters of enhancers: an endothelial-specific set ( $n = 7405$ ), a set common across cell types (1575), and a mixed set where only some cell types exhibited H3K27ac modification (7949) (**Figure 1—figure supplement 3**). Motif analysis of these three sets revealed differential frequencies of AP1, ETS, SOX, and GATA motifs (**Figure 1—figure supplement 3**). AP1 and ETS motifs were least frequently observed in the common enhancer set, while the ETS, GATA, and SOX motifs were most frequently observed in the endothelial-specific enhancer set. These data are consistent with the model that different combinations of transcription factors maintain cell-specific gene expression programs.

### Aortic endothelial enhancers overlap genome-wide association SNPs for CAD and hypertension

To investigate whether EC enhancers have utility to prioritize non-coding functional variants for the cardiovascular diseases CAD and hypertension, we overlapped physical coordinates of the 16,929 enhancers from **Figure 1a** with GWAS associated variants. SNPs meeting genome-wide significance

for CAD or hypertension, which is a major risk factor for atherosclerosis and CAD, were downloaded from the NHGRI-EBI GWAS Catalog (Welter *et al.*, 2014). To account for linkage disequilibrium (LD, the correlation of alleles) between closely spaced SNPs on the same chromosome, we used 1000 Genomes data (Auton *et al.*, 2015) to retrieve SNPs in LD with the reported GWAS SNPs when  $r^2$  was greater than 0.8 based on European haplotype structure. We identified 16 SNPs that were within HAEC enhancers (Table 1) and represent 22 lead SNPs from GWAS studies. Fifty percent of overlapping SNPs were within EC-specific enhancers (as opposed to those common or mixed across cell types), whereas only 43% of enhancers in HAECs are EC-specific (Figure 1—figure supplement 3). These data provide a focused list of potential functional non-coding variants that affect predisposition to CAD and hypertension through EC gene regulation. Further studies will be required to establish the regulatory consequence and predisposing mechanisms of these variants. Nonetheless, our evidence that perturbed endothelial expression contributes to vascular disease underscores the importance of elucidating endothelial gene regulatory programs in homeostasis and inflammatory environments.

### TF expression dynamics across 97 HAEC donors nominates three major modules of TFs as coordinating gene expression

We next questioned how AP1, ETS, SOX, and GATA TFs were expressed in artery ECs across the human population. We postulated that the most prominent actors would be highly expressed with modest variation between people. By leveraging global transcript levels collected across 97 genetically distinct HAECs from healthy human donors (Romanoski *et al.*, 2010), we found that JUN and JUND (AP1) and ERG (ETS) exhibited the greatest median expression values with relatively little variability across the EC donor population (Figure 2a).

To gain insight into the behavior of the TF members with respect to each other, we measured co-variation in TF gene expression profiles across the human population. Co-variation, or co-expression, of TFs could result from one TF (in)directly regulating another, both (in)directly regulating each other, or from each being regulated by a common third mechanism. By clustering pair-wise correlation coefficients across all TFs of interest, we identified three main groups with similar co-expressed profiles: group 1 (in orange) with members FOSL1 and ETS1; group 2 (in green) with GATA2 and GATA6; and group 3 (in yellow) with the remaining factors (Figure 2b, detailed examples in Figure 2c-f). The degree of correlation between TFs is indicated by red intensity (anti-correlation with blue; no correlation with white). Notably, TF expression of groups 1 and 2 were mostly anti-correlated with group three members. A very similar grouping of these TFs was observed when their relationship to all expressed genes was used as the clustering parameter (Figure 2—figure supplement 1). The result that FOSL1 and ETS1 are anti-correlated in expression with the remaining family members, and to HAEC transcripts overall, suggests that they promote opposing gene expression profiles in HAECs.

### Nominated factors, including ERG and JUN, bind HAEC enhancers at closely spaced motifs

To test whether the nominated TFs indeed bound HAEC enhancers, we performed the first chromatin immunoprecipitation sequencing (ChIP-seq) experiments for JUNB, JUN, and ERG in HAECs and analyzed GATA2 (ENCODE Project Consortium, 2012) and ETS1 (Zhang *et al.*, 2013) binding data from human umbilical vein endothelial cells (HUVECs). The JUND cistrome would also be informative in these studies; however, we proceeded with JUN and JUNB because the heterodimeric binding of AP1 factors makes it likely that JUN and JUNB profiles encompass a major portion of the overall AP1 landscape. JUN, JUNB, ETS1, and GATA2 were all confirmed to bind active HAEC enhancers in the open chromatin region (Figure 2—figure supplement 2). As determined by clustering of binding profiles, JUNB and JUN were similar and ERG and ETS1 were similar, supporting the role of canonical DNA motifs on factor recruitment. Next, we asked if there was enrichment of other motifs proximal to the bound motifs as was observed previously for TF pairs known to collaboratively activate cell-specific enhancers (Heinz *et al.*, 2010; Gosselin *et al.*, 2014). For this analysis, loci for the bound factor (e.g. ERG) were centered on the respective motif (e.g. ETS motif) and sites lacking the motif were omitted. Then, frequencies of other motifs were calculated as a function of distance to the reference motif. We found that AP1 motifs were most frequently oriented within 50 base pairs



**Table 1.** Overlap of HAEC enhancers with GWAS loci reported for coronary artery disease (CAD) or hypertension (HT). Associated SNPs were downloaded from the NHGRI-EBI Catalog of published genome-wide association studies. SNPs in linkage disequilibrium (LD) to GWAS association traits were calculated when  $r^2 > 0.8$  according to the European reference population of the 1000 Genomes Project. HAEC enhancers defined in **Figure 1a** were overlapped by physical position (hg19 genome build). The GWAS SNP, p-value, GWAS trait, gene reported, PMID, overlapping HAEC enhancer coordinates and enhancer type are shown.

GWAS SNP					HAEC enhancer			
SNP in enhancer	LD to lead SNP from study	p-Value of lead	Trait	Reported gene of lead	PubMed ID	Position (chr, start bp, end bp)	Nearest gene	Type
rs12091564	Lead	2.0E-07	CAD	HFE2	21626137	1, 145395579, 145395699	LOC101928979	common
rs72701850	LD, rs12091564, $r^2 = 0.95346$	2.0E-07	CAD	HFE2	21626137	1, 145396840, 145397006	LOC101928979	common
rs72701850	LD, rs10218795, $r^2 = 0.95346$	2.0E-07	CAD	HFE2	21626137	1, 145396840, 145397006	LOC101928979	common
rs56348932	LD, rs17114036, $r^2 = 0.916823$	4.0E-19	CAD	PLPP3	21378990, 24262325	1, 56988477, 56988661	PLPP3	EC-specific
rs56348932	LD, rs9970807, $r^2 = 0.942868$	2.0E-09	CAD	PLPP3	26343387	1, 56988477, 56988661	PLPP3	EC-specific
rs56348932	LD, rs17114046, $r^2 = 0.942868$	3.0E-07	CAD	PLPP3	21846871, 21378988	1, 56988477, 56988661	PLPP3	EC-specific
rs10047079	LD, rs2229238, $r^2 = 0.866848$	7.0E-07	CAD	ILR6	22319020	1, 154468114, 154468189	SHE	EC-specific
rs55916033	LD, rs10496288, $r^2 = 1$	2.0E-09	HT	intergenic	21626137	2, 83278987, 83279062	LOC1720	EC-specific
rs55916033	LD, rs10496289, $r^2 = 1$	2.0E-09	HT	intergenic	21626137	2, 83278987, 83279062	LOC1720	EC-specific
rs72836880	LD, rs10496288, $r^2 = 1$	2.0E-09	HT	intergenic	21626137	2, 83308909, 83309314	LOC1720	EC-specific
rs72836880	LD, rs10496289, $r^2 = 1$	2.0E-09	HT	intergenic	21626137	2, 83308909, 83309314	LOC1720	EC-specific
rs112798061	LD, rs10496289, $r^2 = 1$	2.0E-09	HT	intergenic	21626137	2, 83308909, 83309314	LOC1720	EC-specific
rs3748861	LD, rs13420028, $r^2 = 0.916266$	1.0E-10	HT	GPR39	21626137	2, 133196310, 133196505	GPR39	mix
rs3748861	LD, rs10188442, $r^2 = 0.916266$	1.0E-10	HT	GPR39	21626137	2, 133196310, 133196505	GPR39	mix
rs144505847	LD, rs6725887, $r^2 = 1$	1.0E-09	CAD	WDR12	21378990, 24262325	2, 203672243, 203672412	ICA1L	EC-specific
rs144505847	LD, rs7582720, $r^2 = 1$	3.0E-08	CAD	WDR12	24262325	2, 203672243, 203672412	ICA1L	EC-specific
rs56155140	LD, rs17087335, $r^2 = 0.979112$	5.0E-08	CAD	NOA1, REST	26343387	4, 57824385, 57824541	NOA1	mix
rs5869162	LD, rs6452524, $r^2 = 0.924698$	2.0E-07	HT	XRCC4	21626137	5, 82393827, 82393921	XRCC4	EC-specific
rs5869162	LD, rs6887846, $r^2 = 0.924698$	2.0E-07	HT	XRCC4	21626137	5, 82393827, 82393921	XRCC4	EC-specific
rs6475604	LD, rs7865618, $r^2 = 0.940597$	2.0E-27	CAD	MTAP	21606135	9, 22052677, 22052823	CDKN2B	EC-specific
rs17293632	LD, rs72743461, $r^2 = 1$	1.0E-07	CAD	SMAD3	26343387	15, 67442510, 67442670	SMAD3	common
rs17293632	LD, rs56062135, $r^2 = 0.988489$	5.0E-09	CAD	SMAD3	26343387	15, 67442510, 67442670	SMAD3	common
rs17227883	LD, rs17228212, $r^2 = 0.981438$	2.0E-07	CAD	SMAD3	17634449	15, 67442769, 67443128	SMAD3	common

Table 1 continued on next page

Table 1 continued

GWAS SNP					HAEC enhancer			
SNP in enhancer	LD to lead SNP from study	p-Value of lead	Trait	Reported gene of lead	PubMed ID	Position (chr, start bp, end bp)	Nearest gene	Type
rs1563966	LD, rs1231206, r2 = 0.844151	9.0E-10	CAD	intergenic	21378990	17, 2095878, 2096222	LOC101927839	mix
rs1563966	LD, rs216172, r2 = 0.909315	1.0E-09	CAD	SMG6, SRR	21378990, 26343387	17, 2095878, 2096222	LOC101927839	mix
rs7408563	LD, rs7246657, r2 = 0.900512	7.0E-06	CAD	ZNF383	23870195	19, 37808501, 37809067	HKR1	common

DOI: 10.7554/eLife.22536.006

to ERG-bound ETS motifs and that AP1 motif presence decayed with distance from the ETS motif (**Figure 3a**). Reciprocally, ETS motifs were most frequently observed proximal (within 50 base pairs) to JUN/JUNB co-bound AP1 motifs (**Figure 3b**). Both AP1 and ETS motifs were frequently observed near GATA2-bound GATA motifs; however, neither GATA nor SOX motifs were prominent in the vicinity of ETS or AP1-bound motifs (**Figure 3c**). These data support that AP1 and ETS factors collaborate to determine the active chromatin landscape in HAECs with GATA and SOX serving less active roles genome-wide. This observation is consistent with GATA and SOX motifs only having enrichment in EC-specific enhancers (**Figure 1—figure supplement 3**).

### Allele-specific binding to chromosomes lacking motif mutations supports collaborative binding between AP1 and ETS factors

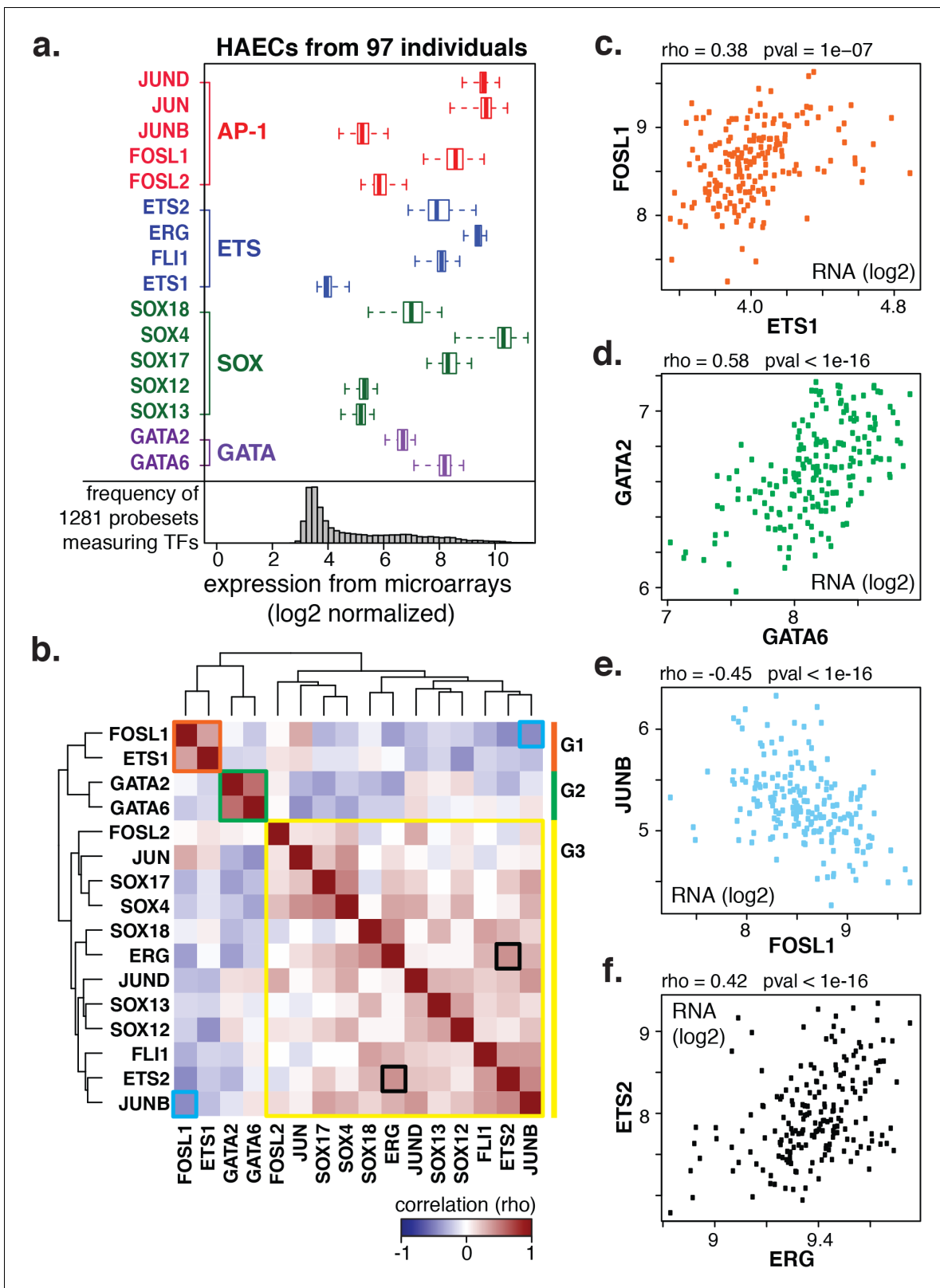
One approach to study collaborative binding between TFs is to knock-down/out a TF of interest and observe a shift in binding or activity at the regulatory element. To avoid complications in interpretability caused by potential redundancy of TF members, we took an alternative approach. As applied in inbred mouse strains previously (**Heinz et al., 2013; Gosselin et al., 2014**), we utilized naturally occurring genetic variation as a genome-wide source of motif mutations. The hypothesis is if the motif for a collaborative transcription factor is mutated then it should affect binding of the collaborating transcription factor whose motif remains in tact. To test this, whole-genome sequencing (WGS) of one HAEC donor was performed at an average of 40X coverage and the identified SNPs were phased with the appropriate 1000 Genomes (**Auton et al., 2015**) reference population (see Materials and methods). To quantify JUN binding to distinct homologous chromosomes at heterozygous loci, JUN ChIP-seq reads were iteratively mapped to human genome builds containing the appropriate allele. Sequence tags with discrepant mappings were omitted to avoid bias. For all loci with a JUN peak containing at least one heterozygous SNP, ChIP-seq tags were counted that could be uniquely assigned to one homologous chromosome. These data were then analyzed with respect to loci where only one SNP allele mutated either the AP1 or ETS motif.

Results showed that JUN binding was significantly affected by mutations in the AP1 motif ( $p = 5.0e^{-10}$ ) such that binding was predominant on the chromosome lacking AP1 motif mutations and diminished on chromosomes containing the mutation (**Figure 3—figure supplement 1**). Interestingly, JUN binding was also significantly affected by mutations in the ETS motif that occurred within 100 base pairs of the JUN peak center (**Figure 3d**  $p$ -value =  $2.6e^{-3}$ ). We would expect to observe the reciprocal relationship, in which AP1 motif mutations alter ERG binding, but the ERG ChIP-seq experiment in the sequenced HAEC donor yielded less than ten thousand peaks and more information is necessary for this analysis. Taken together, these data support a collaborative relationship between AP1 and ETS factors at endothelial enhancers.

### JUN and ERG co-occupy multiple elements near endothelial-specific genes

To interrogate the gene targets of JUN and ERG, we began with loci for genes expressed specifically or predominantly in ECs. All the genes queried, including vascular endothelial cadherin, (CDH5 or VE-cadherin), epidermal growth factor-like protein 7 (EGFL7), von Willebrand Factor (VWF),





**Figure 2.** Coordinate gene expression across 96 genetically distinct HAEC donors identifies three regulatory programs among ETS, AP1, SOX, and GATA family members. (a) TF gene expression measured by Affy/HU133A array is shown across a population of 97 unique HAEC donors. Array probe set IDs were manually confirmed to cover expressed transcript isoforms of the indicated TFs based on RNA-seq data. Boxplots midlines are medians, box edges are 1st and 3rd quartiles, and whiskers 95% confidence intervals. (b) A heatmap of clustered pairwise Spearman correlation coefficients

Figure 2 continued on next page

Figure 2 continued

across 97 HAEC donors and module designations (colored sidebar) is shown with modules and pairs of interest highlighted by colored outlines. (c–f) Pairwise Spearman correlations between indicated mRNAs from b where each dot is a genetically distinct HAEC donor. More related data in

**Figure 2—figure supplements 1 and 2.**

DOI: [10.7554/eLife.22536.007](https://doi.org/10.7554/eLife.22536.007)

The following figure supplements are available for figure 2:

**Figure supplement 1.** The HAEC gene correlation network.

DOI: [10.7554/eLife.22536.008](https://doi.org/10.7554/eLife.22536.008)

**Figure supplement 2.** TF binding at HAEC enhancers.

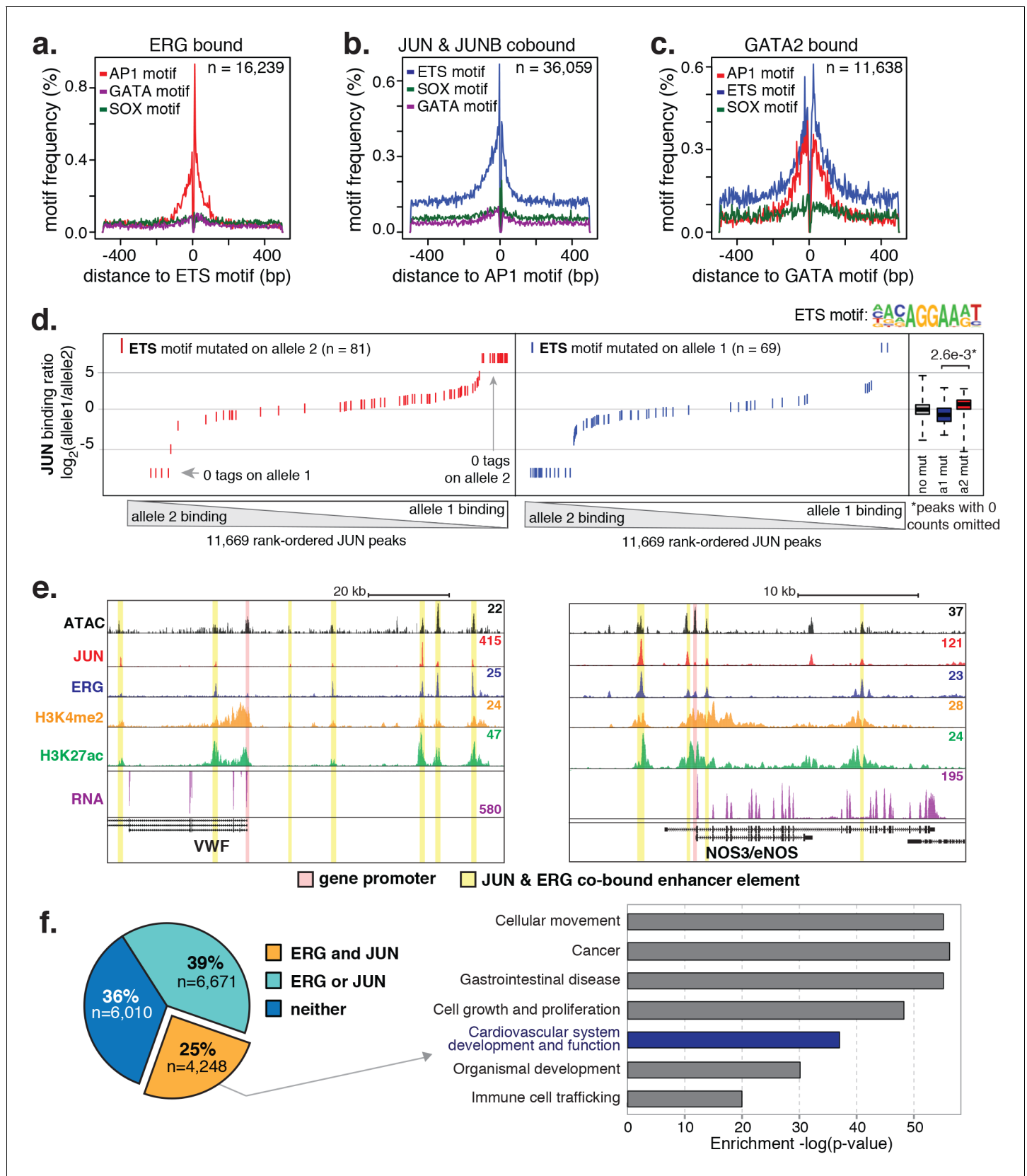
DOI: [10.7554/eLife.22536.009](https://doi.org/10.7554/eLife.22536.009)

endothelial nitric oxide synthase (NOS3), and TEK receptor tyrosine kinase (TEK, or TIE2), exhibited between three and seven ERG/JUN co-bound enhancers across their genetic loci (**Figure 3e, Figure 3—figure supplement 2**). By cross-referencing cisomes of ERG and JUN that individually bound 35,559 and 63,312 genomic loci respectively, we found that 10,919 of the 16,292 (65%) high confidence enhancers from **Figure 1a** were bound by one or both of ERG and JUN (**Figure 3f**). Each enhancer was assigned a target gene(s) based on the following criteria. Since nearest genes are not necessarily the target of enhancer activity, we incorporated expression quantitative trait loci, or eQTL, that were identified in HAECs (**Romanoski et al., 2010**). eQTL are SNP-gene pairs that describe a genetic locus whose alleles are associated with quantitative levels of gene expression values of the target gene, and thus provide a functional link between DNA sequence and gene regulation. Only 7% of enhancers harbored an eQTL SNP, in which case the associated gene was considered the target. In the remaining cases, the nearest gene was used. Pathway analysis for the resulting 4396 target genes for the 4248 ERG and JUN co-bound loci revealed significant enrichment in ‘Cardiovascular system development and function’ ( $p = 6.1e^{-37}$ , **Figure 3f**). Together, these data support that ERG and JUN are major TFs at EC enhancers, and that their collaborative binding regulates expression of endothelial-specific genes important in vascular development and function.

## ERG knockdown elicits a pro-inflammatory gene expression profile in HAECs

To test the functional importance of ERG on target gene expression, we knocked-down ERG using siRNA in HAECs and measured gene expression changes with RNA-seq and RT-qPCR (**Figure 4, Figure 4—figure supplements 1 and 2**). ERG RNA was reduced to less than 40% of normal levels in three independent experiments and resulted in differential expression of up to 1000 transcripts (>4-fold, FDR < 5%) by RNA-seq. Functional enrichment analysis demonstrated that ERG target genes are significantly annotated for ‘cell movement’, ‘breast or ovarian cancer’, ‘angiogenesis’, ‘development of vasculature’, ‘leukocyte migration’, and other pro-inflammatory functions ( $p$ -values from  $1e^{-4}$  to  $1e^{-17}$ , **Figure 4a,b**).

Among the most up-regulated genes caused by ERG knockdown were cytokines interleukin one alpha (IL1 $\alpha$ ; 16-fold), interleukin one beta (IL1 $\beta$ ; 68-fold), leukemia inhibitory factor (LIF; 13-fold), interleukin 6 (IL6; fourfold), granulocyte colony stimulating factor (CSF3; 41-fold), transforming growth factor beta 2 (TGF $\beta$ 2; fivefold) and other pro-inflammatory molecules including tissue factor (F3, 8-fold) (**Figure 4b,c, Figure 4—figure supplements 1 and 2**). In addition, EC-enriched genes that had multiple elements bound by ERG, such as CDH5, VWF, PECAM1, EGFL7, NOS3, and TEK were down-regulated upon ERG knockdown. To ensure that the inflammatory gene profile elicited by ERG knock-down was not a consequence of transfection itself or off-target effects, the profile resulting from six individual siERG oligos was measured along with two non-targeting scrambled siRNA controls and non-transfection controls (**Figure 4—figure supplement 2**). These data were reproducible and consistent with ablated ERG expression as the cause of pro-inflammatory expression profiles. Together, these data suggest that ERG normally functions to maintain EC-specific gene functions such as development and proliferation while at the same time suppressing inflammatory gene expression.



**Figure 3.** ERG and JUN co-bind EC enhancers and are enriched at EC-specific genes. (a–c) Promoter-distal regions bound by ERG, JUN, and JUNB, or GATA2 are shown in a, b, and c respectively in a one kilobase window. Each set was centered on the corresponding binding motif, and the frequency

Figure 3 continued on next page

Figure 3 continued

of other enriched motifs are shown on the y-axis. GATA2 binding was measured in HUVECs. (d) Allele-specific JUN binding (y-axis) as a function of allele-specific ETS motif mutations (colored lines). Each vertical line represents a single JUN peak identified via ChIP-seq. For a more complete explanation see the **Figure 3—figure supplement 1** legend and methods section. (e) TF binding for JUN and ERG, the histone modifications H3K4me2 and H3K27ac and RNA abundance are shown at the genetic loci for VWF and NOS3. Promoters are highlighted in pink and JUN/ERG co-bound enhancers are highlighted in yellow. (f) The HAEC enhancer set from **Figure 1a** is annotated for JUN and/or ERG binding. Ingenuity Pathway Analysis results are shown for the genes nearest the 4248 JUN/ERG co-bound enhancers in the right panel. More related data in **Figure 3—figure supplements 1 and 2**.

DOI: [10.7554/eLife.22536.010](https://doi.org/10.7554/eLife.22536.010)

The following figure supplements are available for figure 3:

**Figure supplement 1.** Allele-specific JUN binding at loci with mutated motifs.

DOI: [10.7554/eLife.22536.011](https://doi.org/10.7554/eLife.22536.011)

**Figure supplement 2.** JUN and ERG co-occupy loci near EC-specific genes.

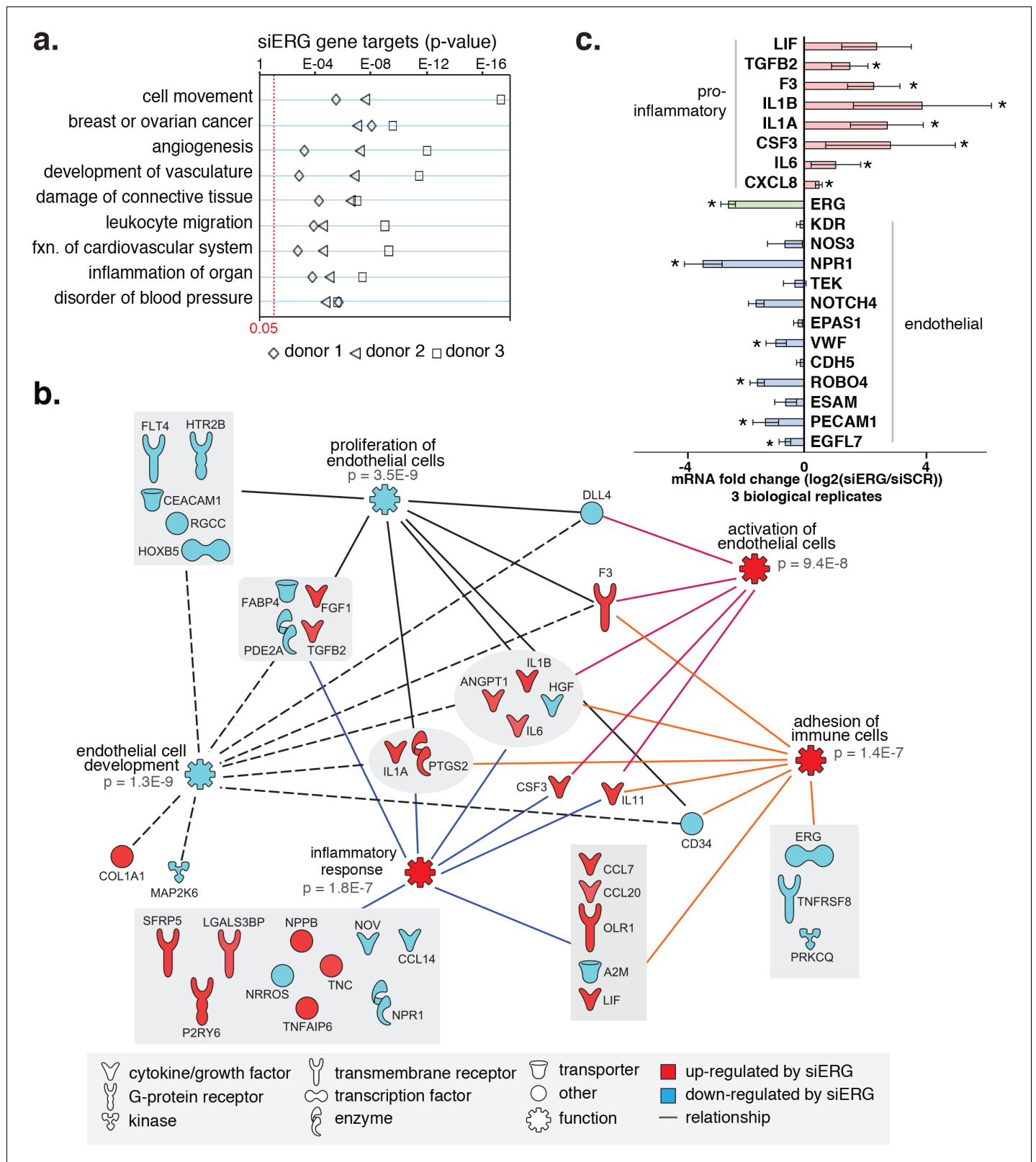
DOI: [10.7554/eLife.22536.012](https://doi.org/10.7554/eLife.22536.012)

## Oxidized phospholipids and inflammatory cytokines alter HAEC gene expression through signal-dependent changes to HAEC enhancer landscapes

To identify regulatory factors that instruct gene expression responses to inflammatory environments of atherosclerosis, we exposed HAECs to three pro-inflammatory treatments: (i) the oxidized products of 1-palmitoyl-2-arachidonoyl-sn-glycero-3-phosphocholine (oxPAPC) that are components of oxidized low-density lipoproteins (oxLDL) (Lee et al., 2012; Romanoski et al., 2011), (ii) tumor necrosis factor alpha (TNF $\alpha$ ) that is a cytokine secreted largely by macrophages, and (iii) interleukin one beta (IL1 $\beta$ ) that is released by many cell types including macrophages. Between 322 and 1174 genes were regulated by these exposures (>2-fold; 5% false discovery rate) (Table 2), and these genes were enriched in known response pathways (Figure 5—figure supplement 1). For example, 4 hr exposure to 40  $\mu$ g/ml oxPAPC treatment resulted in up-regulation of genes belonging to the ‘NRF2-mediated oxidative stress response’ (p-value=2.e<sup>-13</sup>), and the ‘unfolded protein response’ (p-value=7.0e<sup>-7</sup>). Genes regulated by 4 hr exposures to TNF $\alpha$  and IL1 $\beta$  were highly enriched in the same pathways including, ‘TNF receptor signaling’ (p-values from 1.7e<sup>-14</sup> to 1.8e<sup>-12</sup>), ‘granulocyte adhesion and diapedesis’ (p-values from 2.2e<sup>-9</sup> to 7.1e<sup>-13</sup>), and ‘macrophage, fibroblast and EC roles in rheumatoid arthritis’ (p-values from 2.1e<sup>-12</sup> to 1.7e<sup>-13</sup>).

To better understand the program that coordinates HAEC response to oxPAPC, TNF $\alpha$ , and IL1 $\beta$ , we measured enhancer elements genome-wide. We next defined de novo or latent, enhancer-like elements that are genomic regions that became accessible and gained H3K27ac modification upon treatment. De novo enhancers result when signal-dependent transcription factors (SDTFs) play a critical role in the enhancer activation process and, in this study, were used in this study to identify SDTFs. We identified between 266 and 3199 de novo enhancers across treatments (Figure 5a, Table 2). To identify the SDTFs, we performed motif enrichment that revealed differential enrichment of TF motifs across treatments (Figure 5b; comprehensive list in Figure 5—source data 1). For example, the C/EBP, NF $\kappa$ B, and IRF motifs were preferentially enriched in TNF $\alpha$  and IL1 $\beta$  enhancers, whereas the anti-oxidant response element, or ARE, was enriched in the oxPAPC enhancer set. In all sets, we found AP1 and ETS motifs were highly enriched (p<1e<sup>-6</sup>), consistent with the model that the predominant AP1 and ETS endothelial factors collaborate with newly activated SDTFs to activate responsive enhancers and direct dynamic gene expression (Figure 5a,b). Enrichment of  $\kappa$ B motifs at TNF $\alpha$  and IL1 $\beta$  enhancers is consistent with previous work demonstrating that NF $\kappa$ B is a master transcription factor of inflammatory gene programs in s as well as other cell types (Brown et al., 2014). Likewise, oxPAPC-induced enrichment of the ARE motif, to which the TF nuclear factor, erythroid 2-like 2, or NFE2L2/NRF2 binds, is consistent with reports of single gene targets that the transcription factor NRF2 regulates the response to oxidative stress (Ma, 2013; Jyrkkänen et al., 2008).

To directly test the hypothesis that NRF2 and NF $\kappa$ B were in fact SDTFs responsible for inflammatory gene responses, we measured the NRF2 cistrome upon oxPAPC treatment and the NF $\kappa$ B cistrome (using ChIP-seq with  $\kappa$ B-component p65) in TNF $\alpha$  and IL1 $\beta$  4-hr-treated ECs. NRF2 and p65 binding were associated with increases in H3K27ac on adjacent nucleosomes consistent with a role



**Figure 4.** ERG knockdown elicits a pro-inflammatory gene profile in HAECs. (a) Genes up-regulated by ERG knockdown ( $\geq 4$  fold, 5% FDR) were enriched in the indicated functional pathways using Ingenuity Pathway Analysis (IPA). Results are from three experiments using cells from different HAEC donors. ERG levels are shown in c. (b) A network of molecules regulated by ERG knockdown (red = up-regulated; blue = down-regulated) with membership (lines) to five functional processes. The predicted state of the functional processes is shown by color (activation in red; and inhibited in blue). (c) Bar chart showing mRNA fold change ( $\log_2(\text{siERG}/\text{siSCR})$ ) for various genes in 3 biological replicates. Asterisks indicate statistical significance.

Figure 4 continued

blue). Network analysis was performed using IPA and p-values correspond to pathway enrichments. (c) The log<sub>2</sub> fold change caused by siERG knock-down is shown for endothelial-specific genes (blue) and pro-inflammatory genes (pink). Plotted is mean ± SD of fold changes measured in three HAEC donors. Per donor/gene effects are included in **Figure 5—figure supplement 1**. Asterisk indicates p-value < 0.05 from a paired t-test of siERG to siSCR values across three donors. More related data in **Figure 4—figure supplements 1 and 2**.

DOI: [10.7554/eLife.22536.013](https://doi.org/10.7554/eLife.22536.013)

The following figure supplements are available for figure 4:

**Figure supplement 1.** Changes in gene expression with ERG knockdown measured by RNA-seq.

DOI: [10.7554/eLife.22536.014](https://doi.org/10.7554/eLife.22536.014)

**Figure supplement 2.** Changes in gene expression with ERG knockdown measured by RT qPCR.

DOI: [10.7554/eLife.22536.015](https://doi.org/10.7554/eLife.22536.015)

for NRF2 and NFκB as activators of target gene expression (**Figure 5—figure supplements 2 and 3**). Genome-wide binding of NRF2 with oxPAPC treatment identified 6923 NRF2-bound peaks that overlapped with 21% of oxPAPC-elicited de novo enhancers. These included gene loci for known targets including heme oxygenase 1 (HMOX1), thioredoxin reductase 1 (TXNRD1), NAD(P)H quinone dehydrogenase 1 (NQO1), and glutamate-cysteine ligase modifier subunit (GCLM) (**Figure 5—figure supplement 2**). The top four enriched motifs in the NRF2 cistrome were the AP1 motif, an ARE, a nuclear receptor element (NRE) and the ETS motif. These data suggest that, whereas NRF2 is a significant component of the oxPAPC gene response, several additional TFs likely coordinate gene responses at the chromatin level.

For NFκB, we identified tens of thousands of bound loci after TNFα and IL1β treatment (75,937 and 51,040, respectively). Upon cytokine treatment, 52–63% of the elements that gained p65 were pre-bound in untreated HAECs by ERG or JUN (**Figure 5c**), consistent with the working model that enhancers are selected by lineage-restricted combinations of factors that direct signal-dependent transcription factor binding profiles (**Romanoski et al., 2015**). As for de novo enhancers, NFκB had a major presence and bound to 86% and 55% of those elicited by TNFα and IL1β treatments, respectively. Motif enrichment of NFκB cistromes in HAECs identified a prominent role of the AP1 motif as well as roles for ETS, IRF, and CEBP factors (**Figure 5—figure supplement 3**, discussed below).

In addition, we analyzed allele-specific NFκB binding as a function of motif mutations in the κB motif itself as well as mutations in the AP1 and ETS motif. Interestingly, we observed that NFκB binding was diminished at loci where κB, ETS, or AP1 motifs were mutated (**Figure 5—figure supplement 4**). These data are consistent with collaborative interactions between ETS, AP1, and NFκB in establishing inflammatory expression profiles in human ECs, and offer a mechanism whereby ECs may generate cell-specific transcriptional responses to environmental stimuli. Furthermore, these data demonstrate that allele-specific binding in heterogeneous human cells is a useful means to reveal collaborative interactions between transcription factors.

### Non-random spacing of ETS and κB motifs at co-bound elements suggest interplay between ERG and NFκB in inflammation

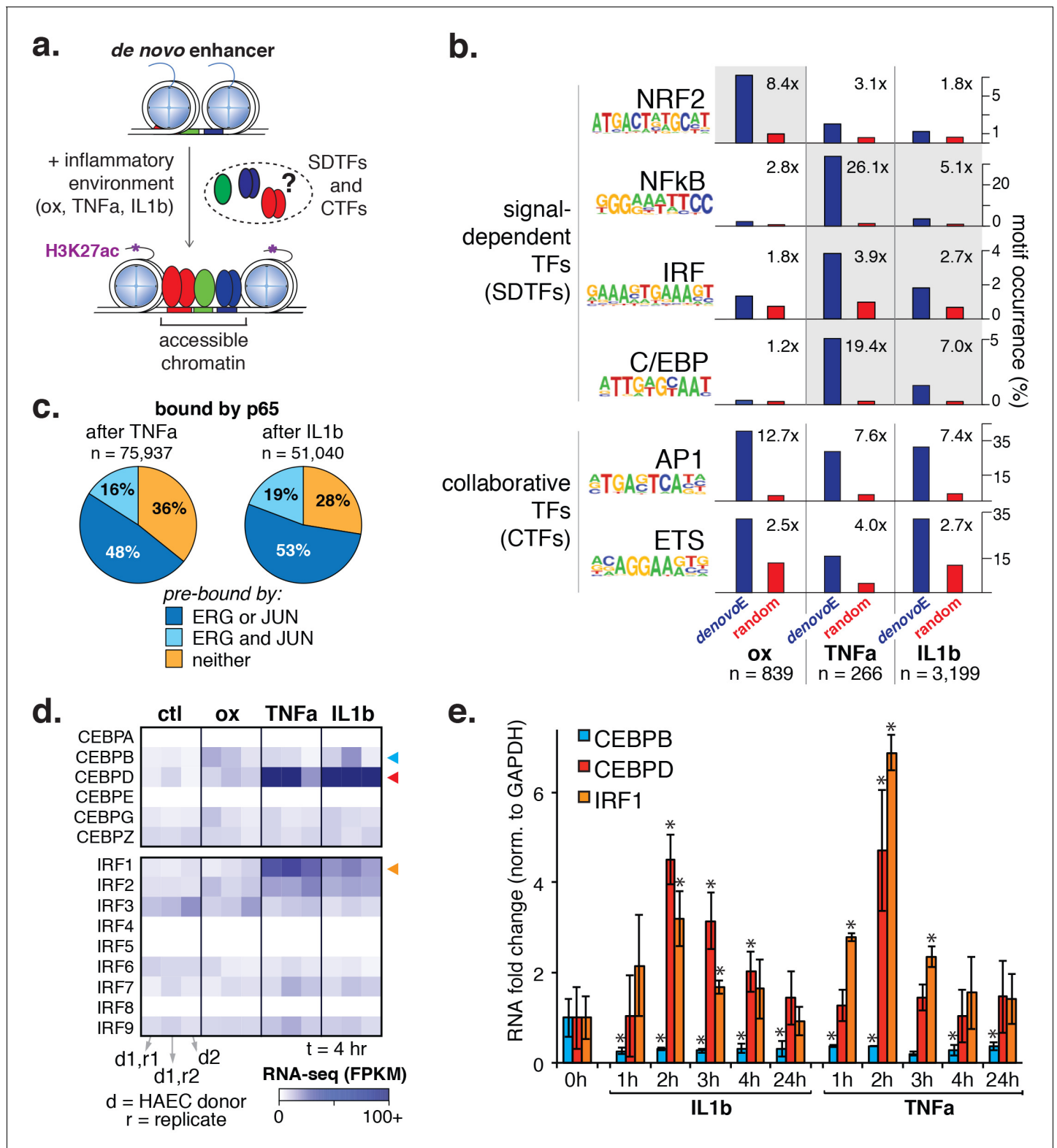
The transcriptional signature resulting from ERG knockdown in aortic ECs (**Figure 4**) is evidence that ERG performs an anti-inflammatory role. This has been demonstrated previously, where ERG suppressed IL-8 and NFκB-mediated inflammation in HUVECs (**Dryden et al., 2012; Sperone et al.,**

**Table 2.** Molecular trait changes observed upon HAEC exposure to pro-inflammatory stimuli. Differential expression was determined in DESeq with duplicate RNA-seq experiments.

Stimulus	Regulated genes (>2 fold, 5%FDR)	de novo enhancers increased H3K27ac and accessibility upon stimulation
oxPAPC 4 hr (40 μg/ml) versus control	322 (242 up, 80 down)	839
TNFα 4 hr (2 ng/ml) versus control	840 (611 up, 229 down)	266
IL1β 4 hr (10 ng/ml) versus control	1174 (807 up, 367 down)	3199

DOI: [10.7554/eLife.22536.016](https://doi.org/10.7554/eLife.22536.016)





**Figure 5.** Inflammatory signals activate enhancer-like elements with distinct motifs and suggest that CEBP and IRF members mediate responsiveness to TNF $\alpha$  and IL1 $\beta$ . (a) A schematic for *de novo* enhancer activation by combinations of signal-dependent and collaborative TFs. (b) Enrichments of the NRF2, NF $\kappa$ B, IRF, C/EBP, AP1, and ETS motifs (y-axis) are shown for *de novo* enhancer sets activated after 4 hr by either 40  $\mu$ g/ml oxPAPC (ox), 10 ng/ml TNF $\alpha$ , or 2 ng/ml IL1 $\beta$  (x-axis). Blue bars show the percent of *de novo* enhancers containing the motif and red bars indicate the percentage of GC-matched random genome sequence containing the motif. Motifs were considered within 200 basepair windows of enhancers. (c) ChIP-seq analysis of Figure 5 continued on next page

Figure 5 continued

p65-binding sites shows regions of the genome that are co-bound by p65 and JUN, p65 and ERG, all three, or solely p65 post treatment by 10 ng/ml IL1 $\beta$  and 2 ng/ml TNF $\alpha$  treatment. (d) Gene expression, measured by RNA-seq is shown by heatmap for TFs of the C/EBP and IRF families. Expression values are shown from two HAEC donors and replicate samples. (e) RT-qPCR analysis shows CEBPB, CEBPD, and IRF1 expression from 0 to 24 hr post treatment by 10 ng/ml IL1 $\beta$  and 2 ng/ml TNF $\alpha$  treatment. Plotted are mean  $\pm$  S.D., experiment performed with biological triplicates. \* represents  $p < 0.05$  by t-test. More related data in **Figure 5—figure supplements 1–4**.

DOI: [10.7554/eLife.22536.017](https://doi.org/10.7554/eLife.22536.017)

The following source data and figure supplements are available for figure 5:

**Source data 1.** Motif enrichments in 100 bp sequences defined by promoter-distal ( $\geq 3$  kb) loci gaining ATAC-seq and H3K27ac upon 4 hr oxPAPC, TNF $\alpha$ , and IL1 $\beta$  treatments.

DOI: [10.7554/eLife.22536.018](https://doi.org/10.7554/eLife.22536.018)

**Figure supplement 1.** The transcriptional response to oxPAPC, TNF $\alpha$ , and IL1 $\beta$ .

DOI: [10.7554/eLife.22536.019](https://doi.org/10.7554/eLife.22536.019)

**Figure supplement 2.** Signal-responsive transcription factor NRF2 binds endothelial enhancers.

DOI: [10.7554/eLife.22536.020](https://doi.org/10.7554/eLife.22536.020)

**Figure supplement 3.** Signal-responsive transcription factor NF $\kappa$ B binds endothelial enhancers.

DOI: [10.7554/eLife.22536.021](https://doi.org/10.7554/eLife.22536.021)

**Figure supplement 4.** Binding of p65 at mutated motifs at each allele p65 (NF $\kappa$ B) binding was measured by ChIP-seq in a HAEC donor with whole-genome sequencing information.

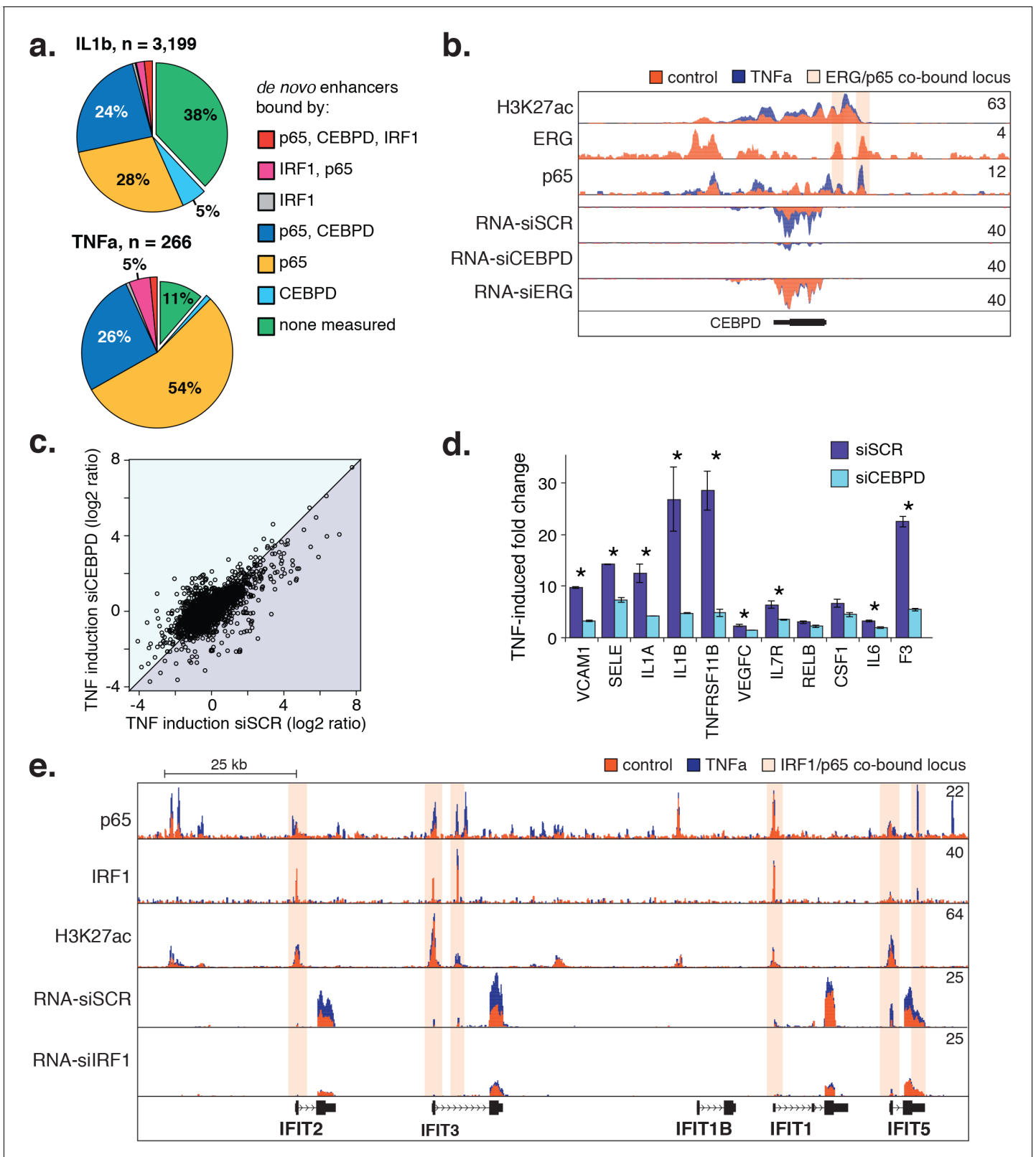
DOI: [10.7554/eLife.22536.022](https://doi.org/10.7554/eLife.22536.022)

**2011; Yuan et al., 2009**). One model to explain the relationship between anti-inflammatory effects of ERG and the pro-inflammatory effects of NF $\kappa$ B at co-bound loci involves the observation that ERG levels are decreased upon inflammatory stimuli ([Yuan et al., 2009] **Figure 6—figure supplement 1a**). Depletion of ERG, simultaneous with increased NF $\kappa$ B concentrations, could result in a functional switch caused by stoichiometric competition between factors. At the pro-inflammatory target gene ICAM-1, Sperone et. al. demonstrated putative ETS-binding sites within the NF $\kappa$ B motif at the gene promoter (Sperone et al., 2011). We also observe co-occupancy of ERG and NF $\kappa$ B (p65) at the ICAM-1 promoter (**Figure 6—figure supplement 1b**).

To examine the genome-wide relationship between ERG and NF $\kappa$ B occupancy upon inflammatory signaling, we compared binding profiles. Twenty-nine percent of ERG binding sites in untreated ECs gained p65 binding upon 4-hr treatment with TNF $\alpha$ , and conversely, 25% of TNF $\alpha$ -elicited p65 binding occurred at loci pre-bound by ERG (**Figure 6—figure supplement 1c**). All co-bound loci were centered on the presumed ETS motif to which ERG binds and the distribution of NF $\kappa$ B motifs within 100 base pairs was calculated. This analysis revealed a distance relationship between ETS and NF $\kappa$ B motifs that is consistent with ERG and NF $\kappa$ B affecting each other's binding and activity to promote pro-inflammatory gene expression (**Figure 6—figure supplement 1d**). Importantly, however, we do not observe reduction in ERG binding after TNF $\alpha$  treatment, as would be expected if the factors were competing for the same element. This is exemplified at the ICAM-1 promoter and in the variability of TNF $\alpha$ -induced changes to ERG and NF $\kappa$ B binding genome-wide (**Figure 6—figure supplement 1e**). Together, these data support coordinated regulation of inflammatory pathways by ERG and NF $\kappa$ B that likely involves multiple mechanisms.

### A role for CEBPD and IRF1 in the HAEC response to inflammatory cytokines

The result that CEBP and IRF motifs were preferentially enriched in TNF $\alpha$  and IL1 $\beta$ -induced enhancers suggested that TFs in these families direct the EC response to cytokines (**Figure 5b**). To identify the likely members, we examined relative expression levels with and without cytokine exposure and found expression of CEBP and IRF factors to be relatively low in untreated HAECs. Upon TNF $\alpha$  and IL1 $\beta$  exposure, however, CEBPD and IRF1 transcription were highly induced (**Figure 5d**). In order for CEBPD and IRF1 to participate in enhancer activation, we reasoned they would need to be expressed prior to 4 hr when de novo motifs were measured. Indeed, a time-course experiment confirmed that both CEBPD and IRF1 RNAs were induced after cytokine treatment with a peak expression at 2 hr (**Figure 5e**).



**Figure 6.** CEBPD and IRF1 knockdown effect on gene expression response to TNF $\alpha$ . (a) Binding of p65, CEBPD, and IRF1 was measured by ChIP-seq and is shown at *de novo* enhancers elicited by IL1 $\beta$  (e) and TNF $\alpha$  (f). Factor binding was measured by ChIP-seq upon 4-hr cytokine treatment, with binding of CEBPD measured after IL1 $\beta$  only. (b) Factor binding, H3K27ac, and mRNA expression is shown at the CEBPD locus in control-treated and TNF $\alpha$ -treated HAECs. CEBPD mRNA is shown in the bottom three tracks as a function of control knockdown (siSCR), CEBPD knockdown, and ERG

Figure 6 continued on next page

Figure 6 continued

knockdown. (c) A global view of mRNA responses to  $\text{TNF}\alpha$  as a function of CEBPD knockdown (y-axis) compared to control (x-axis); mean  $\pm$  S.D. (d) The response to  $\text{TNF}\alpha$  is shown for molecules of interest in control (siSCR) and CEBPD knockdown HAECs. (e) The IFIT locus, highlighting elements co-bound by IRF1 and  $\text{NF}\kappa\text{B}$  (p65). More related data in **Figure 6—figure supplement 1**.

DOI: [10.7554/eLife.22536.023](https://doi.org/10.7554/eLife.22536.023)

The following source data and figure supplement are available for figure 6:

**Source data 1.** Transcripts up-regulated by more than twofold by CEBPD knockdown in untreated HAECs compared to scrambled control.

DOI: [10.7554/eLife.22536.024](https://doi.org/10.7554/eLife.22536.024)

**Figure supplement 1.** ERG and p65 co-bind loci with a distinctive ETS/ $\text{NF}\kappa\text{B}$  motif.

DOI: [10.7554/eLife.22536.025](https://doi.org/10.7554/eLife.22536.025)

Next, we measured binding of IRF1 and CEBPD genome-wide after cytokine treatment (**Figure 6a**). For IRF1, we observed binding to the minority (<10%) of de novo enhancers, and when we did observe binding it was most frequently co-bound with either  $\text{NF}\kappa\text{B}$  or CEBPD. On the other hand, CEBPD bound to a significant proportion of  $\text{IL1}\beta$  and  $\text{TNF}\alpha$  de novo enhancers (34% and 28%, respectively), mostly in conjunction with  $\text{NF}\kappa\text{B}$ . Of all de novo enhancers, 24–26% were co-bound by  $\text{NF}\kappa\text{B}$  and CEBPD within 200 basepairs of each other, strongly suggesting that these factors together regulate target gene expression.

Notably, ERG and  $\text{NF}\kappa\text{B}$  bind to elements at the CEBPD locus and ERG knockdown induces CEBPD expression (**Figure 6b**). These data are consistent with a model whereby cytokine treatment causes down-regulation of ERG as well as nuclear entry and binding of  $\text{NF}\kappa\text{B}$ . These two events induce CEBPD expression and enable CEBPD and  $\text{NF}\kappa\text{B}$  to co-bind enhancers of target genes.

Lastly, we tested whether reducing CEBPD and IRF1 levels with siRNA would dampen the endothelial response to cytokines. As hypothesized, CEBPD knockdown to less than 20% control RNA levels resulted in dampened fold-change ratios for genes up-regulated by  $\text{TNF}\alpha$  (250 genes up-regulated in siCEBPD compared to 497 in scrambled control; **Figure 6c**, bottom triangle). Genes in this set contained inflammatory molecules including vascular cell adhesion molecule 1 (VCAM1), E-selectin (SELE),  $\text{IL1A}$ ,  $\text{IL1}\beta$ , and F3 (**Figure 6d**). However, lesser induction was partly due to an increase in these molecules in the untreated state (**Figure 6—source data 1**) suggesting that CEBPD may play an anti-inflammatory role at baseline. In the IRF1 knockdown, the most prominent locus affected was a stretch of related antiviral proteins called ‘interferon-induced proteins with tetratricopeptide repeats’ (IFITs) on chromosome 10q23 (**Figure 6e**). We found that IRF1 bound six elements along this locus including at the promoters of IFIT2, IFIT3, IFIT1, and IFIT5. IRF1 knockdown reduced the basal levels of RNA from these genes and likewise prevented induction upon  $\text{TNF}\alpha$  treatment, suggesting that IRF1 plays a critical role in their regulation. Together, these data provide evidence that CEBPD and IRF1 tune cytokine-induced regulatory function that is dominated by  $\text{NF}\kappa\text{B}$ . However, further studies will be required to understand the precise role that IRF1 and CEBPD have in aortic EC gene regulation.

## Discussion

In this study, we provide the first detailed characterization of human aortic endothelial enhancers at baseline and under inflammatory conditions using a combination of genome-wide approaches. We observe that ETS, AP1, GATA, and SOX motifs are enriched in active EC enhancers, and we provide evidence that ETS and AP1 factors bind the majority of active enhancers in aortic ECs. Allele-specific binding paired with allele-specific motif mutations provided further evidence of collaborative binding between AP1, ETS, and  $\kappa\text{B}$  factors. Our work demonstrates that knockdown of the ETS factor ERG results in a pro-inflammatory expression profile and corresponding down-regulation of EC-enriched genes. Further, we identify several hundred de novo enhancers formed in response to pro-inflammatory molecules abundant in the atherosclerotic plaque: namely, oxidized phospholipids and the cytokines  $\text{TNF}\alpha$  and  $\text{IL1}\beta$ . Motif enrichments paired with expression changes prioritized  $\text{NF}\kappa\text{B}$ , CEBPD, and IRF1 as the responsible coordinators of cytokine response and NRF2 as a coordinator of response to oxidized phospholipids. Our work provides valuable context to the role of these transcription factors within the regulatory networks controlling the endothelium in physiologic and disease states.

Our approach was to learn the regulatory lexicon of ECs beginning with H3K4me2-positive, H3K27ac-positive, accessible DNA sequence. In doing so we identified a set of TF families, each of which possesses many highly expressed members and inter-correlated expression patterns across aortic ECs from 97 people (**Figure 2**). Of note, whereas SOX members (SOX4/17/18) were among the most abundant of all TFs in aortic ECs, the SOX motif was not as highly enriched at EC enhancers as AP1 and ETS motifs (**Figures 1b, c** and **3a**). An explanation for this could be that SOX factors are critical for the selection of key endothelial enhancers in lineage development, and that only some of these enhancers remain open and available for other factor binding. This would explain the moderate enrichment of SOX motifs and is consistent with the role of SOX17 and SOX 18 in angiogenesis and vascular integrity (reviewed by [De Val and Black, 2009]). However, we acknowledge that this theory does not explain why ECs persistently express such high levels of SOX mRNAs. Another explanation, consistent with the selective enrichment of SOX and GATA motifs only in EC-specific enhancers (**Figure 1—figure supplement 3**) is that these factors play localized but important roles on target genes.

The finding that the ETS and AP1 factors ERG and JUN together bind the majority of EC enhancers, and co-bind key EC loci, supports a prominent and collaborative role for these factors in selecting endothelial specific enhancers. Our analysis of motif mutations further exemplifies a co-dependence of these factors in enhancer binding. While we focus on ERG and JUN in particular, other combinatorial interactions between other ETS and AP1 members almost certainly play prominent roles in endothelial regulation. Still, our findings are consistent with previous reports that ERG is among several ETS transcription factors critical for endothelial lineage development (De Val and Black, 2009; Nikolova-Krstevski et al., 2009; Shah et al., 2016) and regulation of candidate endothelial genes such as CDH5, VWF, and eNOS (Yuan et al., 2009; Birdsey et al., 2008; Laumonier et al., 2000). Knockdown of ERG in aortic ECs revealed two notable effects, namely a reduction in EC-specific gene expression, and production of a pro-inflammatory transcriptional profile. The first of these effects is in keeping with our results demonstrating that ERG and AP1 co-bind promoters and enhancer elements at key endothelial gene loci. This supports our model whereby ERG binds collaboratively with AP1 factors to drive a basal lineage-defining transcriptional network in ECs.

Functional interactions between ETS and AP1 family members have been previously described (Bassuk and Leiden, 1995), and cooperative binding of ETS factors and FOS/JUN occurs at adjacent ETS and AP1 motifs with variable spatial orientation (Kim et al., 2006). In the current study, we also observe a spike in AP1 motifs near ETS motifs consistent with precise spatial orientation at some loci (**Figure 3a,b**), although this motif relationship does not describe the majority of genome-wide ERG and JUN co-binding we observe.

The transcriptional signature resulting from ERG knockdown in aortic EC also further supports the anti-inflammatory role for ERG, which has been demonstrated in HUVECs (Dryden et al., 2012; Sperone et al., 2011; Yuan et al., 2009). Our observation of regularly spaced ETS and  $\kappa$ B motifs at co-bound loci suggests interplay between these two TF families. However, we do not observe coordinated change in genome-wide binding for ERG and NF $\kappa$ B upon TNF $\alpha$  treatment, indicating that these factors act in ways other than competitors for binding (**Figure 6—figure supplement 1**). In addition, we demonstrate ERG to regulate expression of numerous transcription factors (**Supplementary file 2**) that likely regulate secondary transcriptional targets. Recent work in murine EC has also demonstrated a role for ERG in promoting vascular integrity through promotion of canonical Wnt-signaling, via stabilization of  $\beta$ -catenin (Birdsey et al., 2015). This highlights the potential that ERG influences endothelial function through multiple mechanisms. Our present work underscores a role for ERG in promoting endothelial homeostasis and in regulating the inflammatory response. It also broadens our perspective of its regulatory function and cooperation with other factors genome-wide.

Our finding that the CEBP motif was enriched at TNF $\alpha$  and IL1 $\beta$ -induced enhancers and that CEBPD transcript levels were highly induced after treatment supported its role in binding inflammatory enhancers (**Figure 5**). CEBPD knockdown in aortic ECs in the absence of TNF $\alpha$  or IL1 $\beta$  caused modest up-regulation of pro-inflammatory molecules including ICAM1, SELE, IL1 $\alpha$ , and IL1 $\beta$  (**Figure 6, Figure 6—source data 1**), suggesting that CEBPD maintains an anti-inflammatory expression profile in resting ECs. This is consistent with an anti-inflammatory role of CEBPD in pancreatic beta cells in the setting of cytokine stimulation (Moore et al., 2012). However, upon TNF $\alpha$  and IL1 $\beta$



stimulation in aortic ECs, CEBPD knockdown also dampened this inflammatory response as compared to untreated ECs suggesting that in fact CEBPD is required for full responsiveness to cytokines (**Figure 6**). This is consistent with previous reports showing CEBPD to be up-regulated in many inflammatory settings including atherosclerosis (*Takata et al., 2002; Ko et al., 2015*). Going forward, a key part of elucidating the role of SDTF such as CEBPD will be to quantify their loss-of-function effect on de novo enhancers that arise upon inflammatory stimuli. Given our hypothesis of hierarchical transcription factor binding, we would expect to observe loss of some of these enhancers following SDTF inhibition. Complicating this approach, however, is that inflammatory stimuli often induce expression of SDTFs. For example, NF $\kappa$ B binds the promoter of CEBPD (**Figure 6b**). Therefore, targeted mutagenesis strategies, such as the CRISPR-Cas9 system, will be required to fully eliminate SDTF function and interpret the data. Overall, these findings motivate further experiments to fully understand the regulatory function of CEBPD.

Cell type and context-specific enhancer mapping is a critical approach toward fully understanding regulatory disease mechanisms, as many disease loci reside in non-coding DNA sequence. Nonetheless, enhancers are a challenge to measure in pure human cell types relevant to many diseases. We provide a list of candidate SNPs with potential EC-specific non-coding regulatory function (**Table 1**). This is an important step toward fully understanding the etiology and molecular pathogenesis of CAD in humans. In conclusion, our study of dynamic endothelial enhancer elements is an advancement toward a systems-levels understanding of vascular inflammatory diseases.

## Materials and methods

### Cell culture

HAEC were isolated as described (*Navab et al., 1988*) from aortic trimmings of donor hearts at the University of California, Los Angeles (UCLA). All HAECs were de-identified and exempt from consideration as human subjects research by institutional regulatory boards at UC San Diego and The University of Arizona. Cells were grown in culture in M-199 (ThermoFisher Scientific, Waltham, MA, MT-10-060-CV) supplemented with 1.2% sodium pyruvate (ThermoFisher Scientific, Catalog# 11360070), 1% 100X Pen Strep Glutamine (ThermoFisher Scientific Cat# 10378016), 20% fetal bovine serum (FBS, GE Healthcare, HyClone, Pittsburgh, PA), 1.6% Endothelial Cell Growth Serum (Corning, Corning, NY, Product #356006), 1.6% heparin, and 10  $\mu$ L/50 mL Amphotericin B (ThermoFisher Scientific #15290018). Cells were grown to 90% confluence in either 10-cm or 15-cm plates, and used primarily at passages 6 to 10. Cells were then treated with M-199 containing 1% FBS (control) or additionally containing either 40  $\mu$ g/mL Ox-PAPC, 2 ng/mL human recombinant TNF $\alpha$ , or 10 ng/mL human recombinant IL1 $\beta$  (cytokines from R&D Systems, Minneapolis, MN).

### Small-interfering RNAs and qPCR Primers

Knockdown of ERG, CEBPD, and IRF1 were performed using 1 nM siRNA oligonucleotides in Opti-MEM (ThermoFisher Scientific) with Lipofectamine 2000 (ThermoFisher Scientific). Transfections were performed in serum-free media for 4 hr, then cells were grown in full growth media for 48 hr. All siRNAs and qPCR primers used in this study are listed in **Supplementary file 3**.

### RNA-seq

HAECs were resuspended in RNA Lysis Buffer and RNA was extracted from cells using the Quick-RNA Micro Prep kit from ZymoResearch (Irvine, CA, #R1051), including optional DNase I treatment. mRNA was selected through poly-A isolation using Oligo d(T)25 beads (New England BioLabs, Ipswich, MA, #S1419S). Selected RNA was fragmented, followed by single strand cDNA synthesis using a SuperScript III First-Strand Synthesis System (ThermoFisher Scientific # 18080051), followed by second strand synthesis using DNA Polymerase I (Qiagen/Enzymatics, Beverly, MA, #P7050L). dsDNA ends were repaired with T4 DNA Polymerase (Enzymatics #P7080L). Barcode adapters (BIOO Scientific NEXTflex, Austin, TX, #514104) were ligated onto the ends of sequences using T4 DNA Ligase (Enzymatics #L-6030-HC-L) and samples were treated with Uracil DNA Glycosylase (UDG) (Enzymatics #G5010L). Libraries were then amplified by PCR (Phusion Hot Start II, ThermoFisher Scientific, #F549L) and purified (Zymo #D5205) for high-throughput sequencing.



## Chromatin immunoprecipitation sequencing (ChIP-seq)

ChIP-seq was performed as previously described ([Gosselin et al., 2014](#)). Briefly, HAECs were fixed at room temperature with 1% paraformaldehyde in PBS for 10 min, and then quenched with glycine. ChIPs for p65, JUN, and JUNB were performed from chromatin cross-linked by 2 nM Disuccinimidyl Glutarate Crosslinker (DSG) (ProteoChem, Hurricane, UT, #c1104) in PBS for 30 min followed by 1% paraformaldehyde in PBS for 15 min, and then quenched with glycine. Between 2 and 10 million cells were used for each ChIP-seq. Cell lysates were sonicated using a BioRuptor Standard or BioRuptor Pico (Diagenode, Belgium), and then immunoprecipitated using antibodies bound to a 2:1 mixture of Protein A Dynabeads (Invitrogen #10002D) and Protein G Dynabeads (Invitrogen #10004D). Antibodies used included H3K4me2 (EMD Millipore, Billerica, MA, #07–030), H3K27ac (Active Motif, Carlsbad, CA, #39135), CEBPD (Santa Cruz Biotechnology, Dallas, TX, #sc-636X), IRF1 (Santa Cruz #sc-497x), p65 (Santa Cruz #sc-372X), NRF2 (Santa Cruz #sc-1694X), JUN (Santa Cruz #sc-13032X), ERG (Santa Cruz #sc-354X), and JUNB (Santa Cruz #sc-73). Following immunoprecipitation, crosslinking was reversed and libraries were prepared using the same method described for RNA-seq beginning with dsDNA end repair and excluding UDG. For each sample condition, an input library was also created using an aliquot of sonicated cell lysate that had not undergone immunoprecipitation. These samples were sequenced as below and used to normalize ChIP-seq results.

## Transposase-accessible chromatin using sequencing (ATAC-seq)

ATAC-seq was performed on 50,000 HAEC nuclei according to the original published protocol ([Buenrostro et al., 2013](#)) with the exception of size selection (125–175 base pairs on TBE gel) prior to sequencing to enrich for enhancer elements.

## Sequencing data samples, mapping, and normalization

Libraries were sequenced on an Illumina HiSeq 4000 according to manufacturer's specifications at the University California San Diego and at the University of Chicago. Public data was downloaded from public repositories and processed exactly as new data in this study (see below). Reads from ChIP-seq and ATAC-seq were mapped to the hg19 build of the human genome with Bowtie2 ([Langmead and Salzberg, 2012](#)) and RNA-seq reads were mapped with STAR ([Dobin et al., 2013](#)). For ATAC-seq, reads mapping to mitochondrial DNA were discarded. Mapped reads were organized into HOMER's preferred data structure called Tag Directories using the 'makeTagDirectory' command.

ATAC-seq and RNA-seq experiments that measured accessibility and expression in different treatment stimuli (control, oxPAPC, IL1 $\beta$ , and TNF $\alpha$ ) were all conducted at least twice. ERG knock-down was performed in three different HAEC donors. CEBPD and IRF knockdowns were performed in one HAEC donor. The Benjamini-Hochberg false discovery rate (FDR) method was used to correct for all multiple testing in this study. No explicit power analysis was used to compute sample size. Instead, genome-wide features such as enhancer elements served as the replicates for motif analysis and duplicate ChIP-seq experiments confirmed that binding peaks were consistent. With the exception of CEBPD and JUNB that were performed one time, all ChIP-seq experiments were performed in biological duplicate, meaning separate cell expansion and collection.

## RNA-seq analysis

For quantification, RNA-seq was normalized using Reads Per Kilobase of transcript per Million mapped reads (RPKM) procedure in HOMER ([Heinz et al., 2010](#)). RNA sequencing tags were only considered when they mapped to the same DNA strand as indicated by RefSeq annotation. Further, only tags in exons of genes were incorporated as to remove bias created by variable intron sizes. Together, RNA quantification was achieved using the HOMER command 'analyzeRepeats rna -strand + -count exons -rpk'. In this study, RPKM is synonymous with FPKM (Fragments per kilobase mapped). Statistically significant differential expression from RNA-seq experiments was determined first by unnormalized counts (with analyzeRepeats -noadj) followed by statistical testing in DESeq ([Anders and Huber, 2010](#)) and a restriction to a 5% False Discovery Rate. Pathway enrichment analysis was performed using Ingenuity Pathway Analysis software (Qiagen).

## Peak calling

ChIP-seq and ATAC peaks were identified using un-immunoprecipitated chromatin, or 'input', as a negative control. Inputs from the corresponding crosslinking condition were used for each ChIP. No input was used to call ATAC peaks. Peaks were identified in HOMER with the findPeaks program according to the data type. Transcription factor peaks were called using the 'findPeaks -style factor -size 200' option and histone peaks called using the 'findPeaks -style histone' option. ATAC-seq peaks were called using findPeaks with '-L 8 F 8 -style histone -size 75 -minDist 75 -minTagThreshold 6' options. Differential peaks between experiments were determined using the 'getDifferentialPeaks' program with default parameters' (normalized tag count difference >4 fold and poisson enrichment p-value < 0.0001).

Peak merging was performed in HOMER using the 'mergePeaks' program. For enhancers defined in **Figure 1a**, the ATAC-seq peak file was merged with peak regions defined in H3K4me2 and H3K27ac ChIP-seq experiments using the option '-d given' that requires overlap of genomic coordinates between the three peak files. Because the ATAC set was listed first, enhancers were centered on the center of the accessible region. Distal peaks throughout the study were defined as being at least three kilobases from the transcriptional start site of a gene (RefSeq hg19 definitions) using HOMER's 'getDistalPeaks.pl' command.

## De novo enhancers and super-enhancers

De novo enhancers were defined as loci that gained ATAC-seq and H3K27ac ChIP-seq in the same cell simulation. Individual gained peak sets were determined by 'getDifferentialPeaks', explained above, and significant sets were intersected using 'mergePeaks' where the ATAC-seq gained peaks were listed first to maintain centering on accessibility.

Super-enhancers were defined in HOMER from H3K27ac ChIP-seq experiments and corresponding inputs using 'findPeaks -style super -L 0'. This procedure follows the same logic as the original definition proposed by the Young laboratory (*Whyte et al., 2013*). Briefly, the implementation in HOMER identifies 'typical' ChIP-seq peaks, stitches proximal enhancers together, ranks the resulting enhancers by normalized tag counts over input, and thresholds enhancers above a flex-point (slope > 1) as super-enhancers.

## Motif enrichment and distance analysis

Motif enrichment analysis was performed on peak sets using HOMER's 'findMotifsGenome.pl' program. As a background control, this program selects a set of sequences from the same genome build that are matched in size and GC content to the peak set of interest. In **Figure 5b**, to enable enrichment comparison for motifs across multiple peak sets, we used HOMER's 'findMotifsGenome.pl -mknown <motifs>' option iteratively across each de novo enhancer set. For each motif analysis, the amount of sequence analyzed depended on the data type and is indicated in the text.

Analysis of motif distances in **Figure 3a–c** was performed in peak regions identified by ChIP-seq (e.g. ERG-bound in 3a; AP1 bound in 3b; GATA2-bound in 3c). Each peak set was centered on the highest-scoring TF motif that matched the factor immunoprecipitated, so that 0 bp on the x-axis was the beginning of the likely bound motif (e.g. the ETS motif for ERG-bound in 3a). Peaks lacking consensus motifs for the respective factors were excluded from this analysis. Next, the frequency of the other motifs queried (e.g. AP1, GATA and SOX motifs in 3a) were calculated in HOMER by 'annotatePeaks.pl -hist -m' options and the frequency of the additional motifs tested in the vicinity were plotted to show positional relationships among motifs and surrounding genomic sequence.

## Whole-genome sequencing, motif mutation analysis and allele-specific factor binding

For the HAEC line sequenced for analysis as in **Figure 3d**, genomic DNA was prepared for paired-end WGS on Illumina HiSeqX (Illumina, CA) by Novogene (Sacramento, CA) according to manufacturer specifications. More than 80 million raw sequencing reads and a raw depth of 41X were obtained. Data were mapped to the hg19 genome using Burrows-Wheeler Aligner (*Li and Durbin, 2009*). Single nucleotide variants (SNVs) were identified using GATK (*DePristo et al., 2011*). SNVs were then compared to 1000 Genomes reference populations (*Auton et al., 2015*) and the HAEC donor clustered with the Mexican American reference (MXL) population by multi-dimensional scaling

analysis in PLINK (Purcell et al., 2007). SNVs were then phased according to the 1000 Genomes MXL reference population in BEAGLE (Browning and Browning, 2016; Browning and Browning, 2007).

Allele-specific binding of JUN and NFκB/p65 was quantified using the WASP pipeline (van de Geijn et al., 2015). To avoid mapping bias caused by alternate alleles, reads that mapped discordantly to reference and alternate alleles at heterozygous SNPs were discarded. Next, sequencing reads from ChIP experiments were aligned to each haplotype at polymorphic loci and summed within ChIP-seq peaks for the respective factor.

Allele-specific motif mutations were identified with the same method as reported previously (Heinz et al., 2013; Gosselin et al., 2014) with slight modifications. In summary, reference genome sequence (hg19) was extracted at peaks of interest and intersected with SNVs in the HAEC donor of interest. Phased variant data was pulled for each homologous chromosome and alleles were inserted in turn to the genome sequence. Motifs were located by alignment to position weight matrices of ETS, AP1, and κB motifs in HOMER (Heinz et al., 2010). Motif mutations were defined as instances where motifs were only identified on one of the two homologous chromosomes.

For visualization, plots as in Figure 3d show the relationship between allele-specific TF binding and mutations in motifs of interest within the TF peaks containing at least one variant. TF binding was transformed to the log<sub>2</sub> scale and peaks containing 0 reads on one of the two alleles were scaled to ±7.5 (or else the ratio would be ±Infinity). Boxplots showing the distribution of read ratios in each category (no mutations, mutation on allele 1, mutation on allele 2) exclude peaks with 0 counts on either chromosomal pair. This is a conservative approach, as many peaks have zero reads on the mutated chromosome.

## Data visualization

Heatmap-style histograms of sequencing tags (e.g. Figure 1a), were generated using HOMER's 'annotatePeaks.pl -ghist' option and plotted in R using the 'heatmap.2()' function of the gplots library. Cumulative histograms of tag frequencies by position to peak center (e.g. Figure 1c), were generated using HOMER's 'annotatePeaks.pl -hist' option. Standard heatmaps (e.g. Figure 2b) were plotted in R using 'heatmap.2()' with default clustering parameters (Hierarchical clustering and Euclidian distance).

## Enhancer overlap with GWAS data

Coronary artery disease, hypertension, and related traits were downloaded from the NHGRI-EBI Catalog of published genome-wide association studies (Welter et al., 2014). SNPs in linkage disequilibrium (LD) to GWAS association traits were calculated when  $r^2 > 0.8$  in PLINK (Purcell et al., 2007) according to the European reference population of the 1000 Genomes Project (Auton et al., 2015). HAEC enhancers defined in Figure 1a were overlapped by physical position (hg19 genome build). The studies reporting associations that overlapped EC enhancers are as follows: (Nikpay et al., 2015; Samani et al., 2007; Coronary Artery Disease (C4D) Genetics Consortium, 2011; Schunkert et al., 2011; Wild et al., 2011; Slavin et al., 2011; Aouizerat et al., 2011; Mehta, 2011; Davies et al., 2012; Wojczynski et al., 2013; Dichgans et al., 2014; Kertai et al., 2015).

## Public datasets

With the exception of data used to generate Figure 1—figure supplement 3 (see Supplementary file 1 for list), raw sequencing data was downloaded from Gene Expression Omnibus (GEO) as short read archive files and converted to fastq files using 'fastq-dump'. Fastq files were mapped to the hg19 genome build in Bowtie2 and processed according to methods outlined for corresponding data types above. The following publicly available datasets were analyzed: GSE52642 (HAEC GRO-seq), GSE20060 (HAEC microarrays), GSE41166 (ETS-1 HUVEC ChIP-seq), and GSE31477 (GATA2 HUVEC ChIP-seq).

Data generated in this study is available under GEO accession GSE89970 and WGS via NCBI SRA Archive, BioProject PRJNA381088.

## Cell lines

The HAECs used in this study were primary isolates of ECs from aortic trimmings collected from trimmings of donor hearts transplanted through the UCLA heart transplant program as previously described (Navab *et al.*, 1988). No transformations were performed and they were used at low passage (p6-p10).

## Acknowledgements

CER was supported by NIH grant R00123485 and CKG by NIH grants DK091183, DK063491, and GM085764. NH was supported as a Research Fellow by the Sarnoff Cardiovascular Research Foundation. JRS was supported by NIH grant 1R15HL121770-01A1.

---

## Additional information

### Competing interests

CKG: Reviewing editor, *eLife*. The other authors declare that no competing interests exist.

### Funding

Funder	Grant reference number	Author
National Institutes of Health	R00123485	Casey E Romanoski
Sarnoff Cardiovascular Research Foundation	Research Fellowship	Nicholas T Hogan
National Institutes of Health	1R15HL121770-01A1	James R Springstead
National Institutes of Health	DK091183	Christopher K Glass
National Institutes of Health	DK063491	Christopher K Glass
National Institutes of Health	GM085764	Christopher K Glass

The funders had no role in study design, data collection and interpretation, or the decision to submit the work for publication.

### Author contributions

NTH, Conceptualization, Investigation, Writing—original draft, Project administration, Writing—review and editing; MBW, Investigation, Writing—original draft, Writing—review and editing; LKS, Formal analysis, Investigation, Writing—original draft, Writing—review and editing; NKH, Formal analysis, Validation, Investigation; MTL, Conceptualization, Investigation; JRS, Resources, Methodology; CKG, Conceptualization, Resources, Writing—review and editing; CER, Conceptualization, Resources, Data curation, Formal analysis, Supervision, Funding acquisition, Investigation, Visualization, Methodology, Writing—original draft, Project administration, Writing—review and editing

### Author ORCIDs

Christopher K Glass,  <http://orcid.org/0000-0003-4344-3592>

Casey E Romanoski,  <http://orcid.org/0000-0002-0149-225X>

---

## Additional files

### Supplementary files

- Supplementary file 1. Public H3K27ac ChIP-seq datasets used to define endothelial-specific enhancer-like regions. The GEO accession number and cell or tissue type is listed for each dataset in the analysis.

DOI: [10.7554/eLife.22536.026](https://doi.org/10.7554/eLife.22536.026)

- Supplementary file 2. Knockdown of ERG with siRNA modulates transcription of numerous other HAEC transcription factors. Above are the transcription factors shown to be modulated in two separate HAEC donors (by poly-A RNA-sequencing, greater than twofold change in transcript level, adjusted  $p < 0.05$ ).

DOI: [10.7554/eLife.22536.027](https://doi.org/10.7554/eLife.22536.027)

• Supplementary file 3. List of primers and siRNA oligos used in study

DOI: [10.7554/eLife.22536.028](https://doi.org/10.7554/eLife.22536.028)**Major datasets**

The following datasets were generated:

Author(s)	Year	Dataset title	Dataset URL	Database, license, and accessibility information
Romanoski CE, Hogan NT	2017	Genome-wide map of HAEC chromatin landscape under resting and TNFa, IL1b, and OxPAPC stimulation, with corresponding transcription factor binding and RNA expression	<a href="https://www.ncbi.nlm.nih.gov/geo/query/acc.cgi?acc=GSE89970">https://www.ncbi.nlm.nih.gov/geo/query/acc.cgi?acc=GSE89970</a>	Publicly available at the NCBI Gene Expression Omnibus (accession no: GSE89970)
Romanoski CE, Hogan NT	2017	Transcriptional networks specifying homeostatic and pro-inflammatory programs of gene expression in human aortic endothelial cells	<a href="http://www.ncbi.nlm.nih.gov/bioproject/381088">http://www.ncbi.nlm.nih.gov/bioproject/381088</a>	Publicly available at the NCBI BioProject database (accession no: PRJNA381088)

The following previously published datasets were used:

Author(s)	Year	Dataset title	Dataset URL	Database, license, and accessibility information
Kaikkonen MU, Niskanen H, Romanoski CE	2014	Control of VEGF-A transcriptional programs by pausing and genomic compartmentalization	<a href="https://www.ncbi.nlm.nih.gov/geo/query/acc.cgi?acc=GSE52642">https://www.ncbi.nlm.nih.gov/geo/query/acc.cgi?acc=GSE52642</a>	Publicly available at the NCBI Gene Expression Omnibus (accession no: GSE52642)
Romanoski CE, Luis AJ	2010	Expression of human aortic endothelial cells treated with or without oxidized phospholipids	<a href="https://www.ncbi.nlm.nih.gov/geo/query/acc.cgi?acc=GSE20060">https://www.ncbi.nlm.nih.gov/geo/query/acc.cgi?acc=GSE20060</a>	Publicly available at the NCBI Gene Expression Omnibus (accession no: GSE20060)
Zhang B, Day DS, Ho J, Song L, Cao J, Crawford GE, Park PJ, Pu WT	2013	A dynamic H3K27ac signature defines VEGF-regulated endothelial enhancers	<a href="https://www.ncbi.nlm.nih.gov/geo/query/acc.cgi?acc=GSE41166">https://www.ncbi.nlm.nih.gov/geo/query/acc.cgi?acc=GSE41166</a>	Publicly available at the NCBI Gene Expression Omnibus (accession no: GSE41166)
Snyder M, Gerstein M, Weissman S, Farnham P, Struhl K	2011	ENCODE Transcription Factor Binding Sites by ChIP-seq from Stanford/Yale/USC/Harvard	<a href="https://www.ncbi.nlm.nih.gov/geo/query/acc.cgi?acc=GSE31477">https://www.ncbi.nlm.nih.gov/geo/query/acc.cgi?acc=GSE31477</a>	Publicly available at the NCBI Gene Expression Omnibus (accession no: GSE31477)

**References**

- Anders S, Huber W. 2010. Differential expression analysis for sequence count data. *Genome Biology* **11**:R106. doi: [10.1186/gb-2010-11-10-r106](https://doi.org/10.1186/gb-2010-11-10-r106), PMID: 20979621
- Andersson R, Gebhard C, Miguel-Escalada I, Hoof I, Bornholdt J, Boyd M, Chen Y, Zhao X, Schmidl C, Suzuki T, Ntini E, Arner E, Valen E, Li K, Schwarzfischer L, Glatz D, Raithel J, Lilje B, Rapin N, Bagger FO, et al. 2014. An atlas of active enhancers across human cell types and tissues. *Nature* **507**:455–461. doi: [10.1038/nature12787](https://doi.org/10.1038/nature12787), PMID: 24670763
- Aouizerat BE, Vittinghoff E, Musone SL, Pawlikowska L, Kwok PY, Olgin JE, Tseng ZH. 2011. GWAS for discovery and replication of genetic loci associated with sudden cardiac arrest in patients with coronary artery disease. *BMC Cardiovascular Disorders* **11**:29. doi: [10.1186/1471-2261-11-29](https://doi.org/10.1186/1471-2261-11-29), PMID: 21658281
- Auton A, Brooks LD, Durbin RM, Garrison EP, Kang HM, Korbel JO, Marchini JL, McCarthy S, McVean GA, Abecasis GR, 1000 Genomes Project Consortium. 2015. A global reference for human genetic variation. *Nature* **526**:68–74. doi: [10.1038/nature15393](https://doi.org/10.1038/nature15393), PMID: 26432245
- Bassuk AG, Leiden JM. 1995. A direct physical association between ETS and AP-1 transcription factors in normal human T cells. *Immunity* **3**:223–237. doi: [10.1016/1074-7613\(95\)90092-6](https://doi.org/10.1016/1074-7613(95)90092-6), PMID: 7648395



- Birdsey GM**, Dryden NH, Amsellem V, Gebhardt F, Sahnun K, Haskard DO, Dejana E, Mason JC, Randi AM. 2008. Transcription factor *erg* regulates angiogenesis and endothelial apoptosis through VE-cadherin. *Blood* **111**:3498–3506. doi: [10.1182/blood-2007-08-105346](https://doi.org/10.1182/blood-2007-08-105346), PMID: [18195090](https://pubmed.ncbi.nlm.nih.gov/18195090/)
- Birdsey GM**, Shah AV, Dufton N, Reynolds LE, Osuna Almagro L, Yang Y, Aspalter IM, Khan ST, Mason JC, Dejana E, Göttgens B, Hodivala-Dilke K, Gerhardt H, Adams RH, Randi AM. 2015. The endothelial transcription factor ERG promotes vascular stability and growth through wnt/ $\beta$ -catenin signaling. *Developmental Cell* **32**:82–96. doi: [10.1016/j.devcel.2014.11.016](https://doi.org/10.1016/j.devcel.2014.11.016), PMID: [25584796](https://pubmed.ncbi.nlm.nih.gov/25584796/)
- Brown JD**, Lin CY, Duan Q, Griffin G, Federation AJ, Paranal RM, Bair S, Newton G, Lichtman AH, Kung AL, Yang T, Wang H, Lusinskas FW, Croce KJ, Bradner JE, Plutzky J. 2014. NF- $\kappa$ B directs dynamic super enhancer formation in inflammation and atherogenesis. *Molecular Cell* **56**:219–231. doi: [10.1016/j.molcel.2014.08.024](https://doi.org/10.1016/j.molcel.2014.08.024), PMID: [25263595](https://pubmed.ncbi.nlm.nih.gov/25263595/)
- Browning BL**, Browning SR. 2016. Genotype imputation with millions of Reference Samples. *The American Journal of Human Genetics* **98**:116–126. doi: [10.1016/j.ajhg.2015.11.020](https://doi.org/10.1016/j.ajhg.2015.11.020), PMID: [26748515](https://pubmed.ncbi.nlm.nih.gov/26748515/)
- Browning SR**, Browning BL. 2007. Rapid and accurate haplotype phasing and missing-data inference for whole-genome association studies by use of localized haplotype clustering. *The American Journal of Human Genetics* **81**:1084–1097. doi: [10.1086/521987](https://doi.org/10.1086/521987), PMID: [17924348](https://pubmed.ncbi.nlm.nih.gov/17924348/)
- Buenrostro JD**, Giresi PG, Zaba LC, Chang HY, Greenleaf WJ. 2013. Transposition of native chromatin for fast and sensitive epigenomic profiling of open chromatin, DNA-binding proteins and nucleosome position. *Nature Methods* **10**:1213–1218. doi: [10.1038/nmeth.2688](https://doi.org/10.1038/nmeth.2688), PMID: [24097267](https://pubmed.ncbi.nlm.nih.gov/24097267/)
- Coronary Artery Disease (C4D) Genetics Consortium**. 2011. A genome-wide association study in Europeans and South Asians identifies five new loci for coronary artery disease. *Nature Genetics* **43**:339–344. doi: [10.1038/ng.782](https://doi.org/10.1038/ng.782), PMID: [21378988](https://pubmed.ncbi.nlm.nih.gov/21378988/)
- Creyghton MP**, Cheng AW, Welstead GG, Kooistra T, Carey BW, Steine EJ, Hanna J, Lodato MA, Frampton GM, Sharp PA, Boyer LA, Young RA, Jaenisch R. 2010. Histone H3K27ac separates active from poised enhancers and predicts developmental state. *PNAS* **107**:21931–21936. doi: [10.1073/pnas.1016071107](https://doi.org/10.1073/pnas.1016071107), PMID: [21106759](https://pubmed.ncbi.nlm.nih.gov/21106759/)
- Davies RW**, Wells GA, Stewart AF, Erdmann J, Shah SH, Ferguson JF, Hall AS, Anand SS, Burnett MS, Epstein SE, Dandona S, Chen L, Nahrstaedt J, Loley C, König IR, Kraus WE, Granger CB, Engert JC, Hengstenberg C, Wichmann HE, et al. 2012. A genome-wide association study for coronary artery disease identifies a novel susceptibility locus in the Major histocompatibility complex. *Circulation: Cardiovascular Genetics* **5**:217–225. doi: [10.1161/CIRCGENETICS.111.961243](https://doi.org/10.1161/CIRCGENETICS.111.961243), PMID: [22319020](https://pubmed.ncbi.nlm.nih.gov/22319020/)
- De Santa F**, Barozzi I, Mietton F, Ghisletti S, Polletti S, Tusi BK, Muller H, Ragoussis J, Wei CL, Natoli G. 2010. A large fraction of extragenic RNA pol II transcription sites overlap enhancers. *PLoS Biology* **8**:e1000384. doi: [10.1371/journal.pbio.1000384](https://doi.org/10.1371/journal.pbio.1000384), PMID: [20485488](https://pubmed.ncbi.nlm.nih.gov/20485488/)
- De Val S**, Black BL. 2009. Transcriptional control of endothelial cell development. *Developmental Cell* **16**:180–195. doi: [10.1016/j.devcel.2009.01.014](https://doi.org/10.1016/j.devcel.2009.01.014), PMID: [19217421](https://pubmed.ncbi.nlm.nih.gov/19217421/)
- DePristo MA**, Banks E, Poplin R, Garimella KV, Maguire JR, Hartl C, Philippakis AA, del Angel G, Rivas MA, Hanna M, McKenna A, Fennell TJ, Kernysky AM, Sivachenko AY, Cibulskis K, Gabriel SB, Altshuler D, Daly MJ. 2011. A framework for variation discovery and genotyping using next-generation DNA sequencing data. *Nature Genetics* **43**:491–498. doi: [10.1038/ng.806](https://doi.org/10.1038/ng.806), PMID: [21478889](https://pubmed.ncbi.nlm.nih.gov/21478889/)
- Dichgans M**, Malik R, König IR, Rosand J, Clarke R, Gretarsdottir S, Thorleifsson G, Mitchell BD, Assimes TL, Levi C, O'Donnell CJ, Fornage M, Thorsteinsdottir U, Psaty BM, Hengstenberg C, Seshadri S, Erdmann J, Bis JC, Peters A, Boncoraglio GB, et al. 2014. Shared genetic susceptibility to ischemic stroke and coronary artery disease: a genome-wide analysis of common variants. *Stroke* **45**:24–36. doi: [10.1161/STROKEAHA.113.002707](https://doi.org/10.1161/STROKEAHA.113.002707), PMID: [24262325](https://pubmed.ncbi.nlm.nih.gov/24262325/)
- Dobin A**, Davis CA, Schlesinger F, Drenkow J, Zaleski C, Jha S, Batut P, Chaisson M, Gingeras TR. 2013. STAR: ultrafast universal RNA-seq aligner. *Bioinformatics* **29**:15–21. doi: [10.1093/bioinformatics/bts635](https://doi.org/10.1093/bioinformatics/bts635), PMID: [23104886](https://pubmed.ncbi.nlm.nih.gov/23104886/)
- Downen JM**, Fan ZP, Hnisz D, Ren G, Abraham BJ, Zhang LN, Weintraub AS, Schuijers J, Lee TI, Zhao K, Young RA. 2014. Control of cell identity genes occurs in insulated neighborhoods in mammalian chromosomes. *Cell* **159**:374–387. doi: [10.1016/j.cell.2014.09.030](https://doi.org/10.1016/j.cell.2014.09.030), PMID: [25303531](https://pubmed.ncbi.nlm.nih.gov/25303531/)
- Dryden NH**, Sperone A, Martin-Almedina S, Hannah RL, Birdsey GM, Khan ST, Layhadi JA, Mason JC, Haskard DO, Göttgens B, Randi AM. 2012. The transcription factor *erg* controls endothelial cell quiescence by repressing activity of nuclear factor (NF)- $\kappa$ B p65. *Journal of Biological Chemistry* **287**:12331–12342. doi: [10.1074/jbc.M112.346791](https://doi.org/10.1074/jbc.M112.346791), PMID: [22337883](https://pubmed.ncbi.nlm.nih.gov/22337883/)
- ENCODE Project Consortium**. 2012. An integrated encyclopedia of DNA elements in the human genome. *Nature* **489**:57–74. doi: [10.1038/nature11247](https://doi.org/10.1038/nature11247), PMID: [22955616](https://pubmed.ncbi.nlm.nih.gov/22955616/)
- Glass CK**, Witztum JL. 2001. Atherosclerosis. the road ahead. *Cell* **104**:503–516. doi: [10.1016/S0092-8674\(01\)00238-0](https://doi.org/10.1016/S0092-8674(01)00238-0), PMID: [11239408](https://pubmed.ncbi.nlm.nih.gov/11239408/)
- Gosselin D**, Link VM, Romanoski CE, Fonseca GJ, Eichenfield DZ, Spann NJ, Stender JD, Chun HB, Garner H, Geissmann F, Glass CK. 2014. Environment drives selection and function of enhancers controlling tissue-specific macrophage identities. *Cell* **159**:1327–1340. doi: [10.1016/j.cell.2014.11.023](https://doi.org/10.1016/j.cell.2014.11.023), PMID: [25480297](https://pubmed.ncbi.nlm.nih.gov/25480297/)
- Heintzman ND**, Stuart RK, Hon G, Fu Y, Ching CW, Hawkins RD, Barrera LO, Van Calcar S, Qu C, Ching KA, Wang W, Weng Z, Green RD, Crawford GE, Ren B. 2007. Distinct and predictive chromatin signatures of transcriptional promoters and enhancers in the human genome. *Nature Genetics* **39**:311–318. doi: [10.1038/ng1966](https://doi.org/10.1038/ng1966), PMID: [17277777](https://pubmed.ncbi.nlm.nih.gov/17277777/)
- Heinz S**, Benner C, Spann N, Bertolino E, Lin YC, Laslo P, Cheng JX, Murre C, Singh H, Glass CK. 2010. Simple combinations of lineage-determining transcription factors prime cis-regulatory elements required for



- macrophage and B cell identities. *Molecular Cell* **38**:576–589. doi: [10.1016/j.molcel.2010.05.004](https://doi.org/10.1016/j.molcel.2010.05.004), PMID: [20513432](https://pubmed.ncbi.nlm.nih.gov/20513432/)
- Heinz S, Romanoski CE, Benner C, Allison KA, Kaikkonen MU, Orozco LD, Glass CK. 2013. Effect of natural genetic variation on enhancer selection and function. *Nature* **503**:487–492. doi: [10.1038/nature12615](https://doi.org/10.1038/nature12615), PMID: [24121437](https://pubmed.ncbi.nlm.nih.gov/24121437/)
- Heinz S, Romanoski CE, Benner C, Glass CK. 2015. The selection and function of cell type-specific enhancers. *Nature Reviews Molecular Cell Biology* **16**:144–154. doi: [10.1038/nrm3949](https://doi.org/10.1038/nrm3949), PMID: [25650801](https://pubmed.ncbi.nlm.nih.gov/25650801/)
- Hindorf LA, Sethupathy P, Junkins HA, Ramos EM, Mehta JP, Collins FS, Manolio TA. 2009. Potential etiologic and functional implications of genome-wide association loci for human diseases and traits. *PNAS* **106**:9362–9367. doi: [10.1073/pnas.0903103106](https://doi.org/10.1073/pnas.0903103106), PMID: [19474294](https://pubmed.ncbi.nlm.nih.gov/19474294/)
- Hnisz D, Abraham BJ, Lee TI, Lau A, Saint-André V, Sigova AA, Hoke HA, Young RA. 2013. Super-enhancers in the control of cell identity and disease. *Cell* **155**:934–947. doi: [10.1016/j.cell.2013.09.053](https://doi.org/10.1016/j.cell.2013.09.053), PMID: [24119843](https://pubmed.ncbi.nlm.nih.gov/24119843/)
- Jyrkkänen HK, Kansanen E, Inkala M, Kivelä AM, Hurttila H, Heinonen SE, Goldsteins G, Jauhiainen S, Tiainen S, Makkonen H, Oskolkova O, Afonyushkin T, Koistinaho J, Yamamoto M, Bochkov VN, Ylä-Herttuala S, Levonen AL. 2008. Nrf2 regulates antioxidant gene expression evoked by oxidized phospholipids in endothelial cells and murine arteries in vivo. *Circulation Research* **103**:e1–e9. doi: [10.1161/CIRCRESAHA.108.176883](https://doi.org/10.1161/CIRCRESAHA.108.176883), PMID: [18535259](https://pubmed.ncbi.nlm.nih.gov/18535259/)
- Kaikkonen MU, Niskanen H, Romanoski CE, Kansanen E, Kivelä AM, Laitalainen J, Heinz S, Benner C, Glass CK, Ylä-Herttuala S. 2014. Control of VEGF-A transcriptional programs by pausing and genomic compartmentalization. *Nucleic Acids Research* **42**:12570–12584. doi: [10.1093/nar/gku1036](https://doi.org/10.1093/nar/gku1036), PMID: [25352550](https://pubmed.ncbi.nlm.nih.gov/25352550/)
- Kaikkonen MU, Spann NJ, Heinz S, Romanoski CE, Allison KA, Stender JD, Chun HB, Tough DF, Prinjha RK, Benner C, Glass CK. 2013. Remodeling of the enhancer landscape during macrophage activation is coupled to enhancer transcription. *Molecular Cell* **51**:310–325. doi: [10.1016/j.molcel.2013.07.010](https://doi.org/10.1016/j.molcel.2013.07.010), PMID: [23932714](https://pubmed.ncbi.nlm.nih.gov/23932714/)
- Kertai MD, Li YJ, Li YW, Ji Y, Alexander J, Newman MF, Smith PK, Joseph D, Mathew JP, Podgoreanu MV, Duke Perioperative Genetics and Safety Outcomes (PEGASUS) Investigative Team. 2015. Genome-wide association study of perioperative myocardial infarction after coronary artery bypass surgery. *BMJ Open* **5**:e006920. doi: [10.1136/bmjopen-2014-006920](https://doi.org/10.1136/bmjopen-2014-006920), PMID: [25948407](https://pubmed.ncbi.nlm.nih.gov/25948407/)
- Kim S, Denny CT, Wisdom R. 2006. Cooperative DNA binding with AP-1 proteins is required for transformation by EWS-Ets fusion proteins. *Molecular and Cellular Biology* **26**:2467–2478. doi: [10.1128/MCB.26.7.2467-2478.2006](https://doi.org/10.1128/MCB.26.7.2467-2478.2006), PMID: [16537893](https://pubmed.ncbi.nlm.nih.gov/16537893/)
- Kim TK, Hemberg M, Gray JM, Costa AM, Bear DM, Wu J, Harmin DA, Laptewicz M, Barbara-Haley K, Kuersten S, Markenscoff-Papadimitriou E, Kuhl D, Bito H, Worley PF, Kreiman G, Greenberg ME. 2010. Widespread transcription at neuronal activity-regulated enhancers. *Nature* **465**:182–187. doi: [10.1038/nature09033](https://doi.org/10.1038/nature09033), PMID: [20393465](https://pubmed.ncbi.nlm.nih.gov/20393465/)
- Ko CY, Chang WC, Wang JM. 2015. Biological roles of CCAAT/Enhancer-binding protein Delta during inflammation. *Journal of Biomedical Science* **22**:6. doi: [10.1186/s12929-014-0110-2](https://doi.org/10.1186/s12929-014-0110-2), PMID: [25591788](https://pubmed.ncbi.nlm.nih.gov/25591788/)
- Kundaje A, Meuleman W, Ernst J, Bilenky M, Yen A, Heravi-Moussavi A, Kheradpour P, Zhang Z, Wang J, Ziller MJ, Amin V, Whitaker JW, Schultz MD, Ward LD, Sarkar A, Quon G, Sandstrom RS, Eaton ML, Wu YC, Pfenning AR, et al. 2015. Integrative analysis of 111 reference human epigenomes. *Nature* **518**:317–330. doi: [10.1038/nature14248](https://doi.org/10.1038/nature14248), PMID: [25693563](https://pubmed.ncbi.nlm.nih.gov/25693563/)
- Lam MT, Cho H, Lesch HP, Gosselin D, Heinz S, Tanaka-Oishi Y, Benner C, Kaikkonen MU, Kim AS, Kosaka M, Lee CY, Watt A, Grossman TR, Rosenfeld MG, Evans RM, Glass CK. 2013. Rev-Erbs repress macrophage gene expression by inhibiting enhancer-directed transcription. *Nature* **498**:511–515. doi: [10.1038/nature12209](https://doi.org/10.1038/nature12209), PMID: [23728303](https://pubmed.ncbi.nlm.nih.gov/23728303/)
- Langmead B, Salzberg SL. 2012. Fast gapped-read alignment with bowtie 2. *Nature Methods* **9**:357–359. doi: [10.1038/nmeth.1923](https://doi.org/10.1038/nmeth.1923), PMID: [22388286](https://pubmed.ncbi.nlm.nih.gov/22388286/)
- Laumonier Y, Nadaud S, Agrapart M, Soubrier F. 2000. Characterization of an upstream enhancer region in the promoter of the human endothelial nitric-oxide synthase gene. *Journal of Biological Chemistry* **275**:40732–40741. doi: [10.1074/jbc.M004696200](https://doi.org/10.1074/jbc.M004696200), PMID: [11013235](https://pubmed.ncbi.nlm.nih.gov/11013235/)
- Lee S, Birukov KG, Romanoski CE, Springstead JR, Lusic AJ, Berliner JA. 2012. Role of phospholipid oxidation products in atherosclerosis. *Circulation Research* **111**:778–799. doi: [10.1161/CIRCRESAHA.111.256859](https://doi.org/10.1161/CIRCRESAHA.111.256859), PMID: [22935534](https://pubmed.ncbi.nlm.nih.gov/22935534/)
- Li H, Durbin R. 2009. Fast and accurate short read alignment with Burrows-Wheeler transform. *Bioinformatics* **25**:1754–1760. doi: [10.1093/bioinformatics/btp324](https://doi.org/10.1093/bioinformatics/btp324), PMID: [19451168](https://pubmed.ncbi.nlm.nih.gov/19451168/)
- Lusic AJ. 2000. Atherosclerosis. *Nature* **407**:233–241. doi: [10.1038/35025203](https://doi.org/10.1038/35025203), PMID: [11001066](https://pubmed.ncbi.nlm.nih.gov/11001066/)
- Ma Q. 2013. Role of nrf2 in oxidative stress and toxicity. *Annual Review of Pharmacology and Toxicology* **53**:401–426. doi: [10.1146/annurev-pharmtox-011112-140320](https://doi.org/10.1146/annurev-pharmtox-011112-140320), PMID: [23294312](https://pubmed.ncbi.nlm.nih.gov/23294312/)
- Manolio TA. 2010. Genomewide association studies and assessment of the risk of disease. *The New England Journal of Medicine* **363**:166–176. doi: [10.1056/NEJMra0905980](https://doi.org/10.1056/NEJMra0905980), PMID: [20647212](https://pubmed.ncbi.nlm.nih.gov/20647212/)
- Mehta NN. 2011. A genome-wide association study in europeans and South asians identifies 5 New Loci for Coronary artery disease. *Circulation: Cardiovascular Genetics* **4**:465–466. doi: [10.1161/CIRCGENETICS.111.960989](https://doi.org/10.1161/CIRCGENETICS.111.960989), PMID: [21846871](https://pubmed.ncbi.nlm.nih.gov/21846871/)
- Moore F, Santin I, Nogueira TC, Gurzov EN, Marselli L, Marchetti P, Eizirik DL. 2012. The transcription factor C/EBP Delta has anti-apoptotic and anti-inflammatory roles in pancreatic beta cells. *PLoS One* **7**:e31062. doi: [10.1371/journal.pone.0031062](https://doi.org/10.1371/journal.pone.0031062), PMID: [22347430](https://pubmed.ncbi.nlm.nih.gov/22347430/)

- Navab M**, Hough GP, Stevenson LW, Drinkwater DC, Laks H, Fogelman AM. 1988. Monocyte migration into the subendothelial space of a coculture of adult human aortic endothelial and smooth muscle cells. *Journal of Clinical Investigation* **82**:1853–1863. doi: [10.1172/JCI113802](https://doi.org/10.1172/JCI113802), PMID: [3198759](https://pubmed.ncbi.nlm.nih.gov/3198759/)
- Nikolova-Krstevski V**, Yuan L, Le Bras A, Vijayaraj P, Kondo M, Gebauer I, Bhasin M, Carman CV, Oettgen P. 2009. ERG is required for the differentiation of embryonic stem cells along the endothelial lineage. *BMC Developmental Biology* **9**:72. doi: [10.1186/1471-213X-9-72](https://doi.org/10.1186/1471-213X-9-72), PMID: [20030844](https://pubmed.ncbi.nlm.nih.gov/20030844/)
- Nikpay M**, Goel A, Won HH, Hall LM, Willenborg C, Kanoni S, Saleheen D, Kyriakou T, Nelson CP, Hopewell JC, Webb TR, Zeng L, Dehghan A, Alver M, Armasu SM, Auro K, Bjorndal A, Chasman DI, Chen S, Ford I, et al. 2015. A comprehensive 1,000 Genomes-based genome-wide association meta-analysis of coronary artery disease. *Nature Genetics* **47**:1121–1130. doi: [10.1038/ng.3396](https://doi.org/10.1038/ng.3396), PMID: [26343387](https://pubmed.ncbi.nlm.nih.gov/26343387/)
- Purcell S**, Neale B, Todd-Brown K, Thomas L, Ferreira MA, Bender D, Maller J, Sklar P, de Bakker PI, Daly MJ, Sham PC. 2007. PLINK: a tool set for whole-genome association and population-based linkage analyses. *The American Journal of Human Genetics* **81**:559–575. doi: [10.1086/519795](https://doi.org/10.1086/519795), PMID: [17701901](https://pubmed.ncbi.nlm.nih.gov/17701901/)
- Rada-Iglesias A**, Bajpai R, Swigut T, Bruggmann SA, Flynn RA, Wysocka J. 2011. A unique chromatin signature uncovers early developmental enhancers in humans. *Nature* **470**:279–283. doi: [10.1038/nature09692](https://doi.org/10.1038/nature09692), PMID: [21160473](https://pubmed.ncbi.nlm.nih.gov/21160473/)
- Romanoski CE**, Che N, Yin F, Mai N, Pouldar D, Civelek M, Pan C, Lee S, Vakili L, Yang WP, Kayne P, Mungrue IN, Araujo JA, Berliner JA, Lusis AJ. 2011. Network for activation of human endothelial cells by oxidized phospholipids: a critical role of heme oxygenase 1. *Circulation Research* **109**:e27–e41. doi: [10.1161/CIRCRESAHA.111.241869](https://doi.org/10.1161/CIRCRESAHA.111.241869), PMID: [21737788](https://pubmed.ncbi.nlm.nih.gov/21737788/)
- Romanoski CE**, Lee S, Kim MJ, Ingram-Drake L, Plaisier CL, Yordanova R, Tilford C, Guan B, He A, Gargalovic PS, Kirchgessner TG, Berliner JA, Lusis AJ. 2010. Systems genetics analysis of gene-by-environment interactions in human cells. *The American Journal of Human Genetics* **86**:399–410. doi: [10.1016/j.ajhg.2010.02.002](https://doi.org/10.1016/j.ajhg.2010.02.002), PMID: [20170901](https://pubmed.ncbi.nlm.nih.gov/20170901/)
- Romanoski CE**, Link VM, Heinz S, Glass CK. 2015. Exploiting genomics and natural genetic variation to decode macrophage enhancers. *Trends in Immunology* **36**:507–518. doi: [10.1016/j.it.2015.07.006](https://doi.org/10.1016/j.it.2015.07.006), PMID: [26298065](https://pubmed.ncbi.nlm.nih.gov/26298065/)
- Samani NJ**, Erdmann J, Hall AS, Hengstenberg C, Mangino M, Mayer B, Dixon RJ, Meitinger T, Braund P, Wichmann HE, Barrett JH, König IR, Stevens SE, Szymczak S, Tregouet DA, Iles MM, Pahlke F, Pollard H, Lieb W, Cambien F, et al. 2007. Genomewide association analysis of coronary artery disease. *New England Journal of Medicine* **357**:443–453. doi: [10.1056/NEJMoa072366](https://doi.org/10.1056/NEJMoa072366), PMID: [17634449](https://pubmed.ncbi.nlm.nih.gov/17634449/)
- Schunkert H**, König IR, Kathiresan S, Reilly MP, Assimes TL, Holm H, Preuss M, Stewart AF, Barbalic M, Gieger C, Absher D, Aherrahrou Z, Allayee H, Altshuler D, Anand SS, Andersen K, Anderson JL, Ardissono D, Ball SG, Balmforth AJ, et al. 2011. Large-scale association analysis identifies 13 new susceptibility loci for coronary artery disease. *Nature Genetics* **43**:333–338. doi: [10.1038/ng.784](https://doi.org/10.1038/ng.784), PMID: [21378990](https://pubmed.ncbi.nlm.nih.gov/21378990/)
- Shah AV**, Birdsey GM, Randi AM. 2016. Regulation of endothelial homeostasis, vascular development and angiogenesis by the transcription factor ERG. *Vascular Pharmacology* **86**:3–13. doi: [10.1016/j.vph.2016.05.003](https://doi.org/10.1016/j.vph.2016.05.003), PMID: [27208692](https://pubmed.ncbi.nlm.nih.gov/27208692/)
- Shlyueva D**, Stampfel G, Stark A. 2014. Transcriptional enhancers: from properties to genome-wide predictions. *Nature Reviews Genetics* **15**:272–286. doi: [10.1038/nrg3682](https://doi.org/10.1038/nrg3682), PMID: [24614317](https://pubmed.ncbi.nlm.nih.gov/24614317/)
- Slavin TP**, Feng T, Schnell A, Zhu X, Elston RC. 2011. Two-marker association tests yield new disease associations for coronary artery disease and hypertension. *Human Genetics* **130**:725–733. doi: [10.1007/s00439-011-1009-6](https://doi.org/10.1007/s00439-011-1009-6), PMID: [21626137](https://pubmed.ncbi.nlm.nih.gov/21626137/)
- Sperone A**, Dryden NH, Birdsey GM, Madden L, Johns M, Evans PC, Mason JC, Haskard DO, Boyle JJ, Paleolog EM, Randi AM. 2011. The transcription factor erg inhibits vascular inflammation by repressing NF-kappaB activation and proinflammatory gene expression in endothelial cells. *Arteriosclerosis, Thrombosis, and Vascular Biology* **31**:142–150. doi: [10.1161/ATVBAHA.110.216473](https://doi.org/10.1161/ATVBAHA.110.216473), PMID: [20966395](https://pubmed.ncbi.nlm.nih.gov/20966395/)
- Tabas I**, García-Cardena G, Owens GK. 2015. Recent insights into the cellular biology of atherosclerosis. *The Journal of Cell Biology* **209**:13–22. doi: [10.1083/jcb.201412052](https://doi.org/10.1083/jcb.201412052), PMID: [25869663](https://pubmed.ncbi.nlm.nih.gov/25869663/)
- Takata Y**, Kitami Y, Yang ZH, Nakamura M, Okura T, Hiwada K. 2002. Vascular inflammation is negatively autoregulated by interaction between CCAAT/enhancer-binding protein-delta and peroxisome proliferator-activated receptor-gamma. *Circulation Research* **91**:427–433. doi: [10.1161/01.RES.0000031271.20771.4F](https://doi.org/10.1161/01.RES.0000031271.20771.4F), PMID: [12215492](https://pubmed.ncbi.nlm.nih.gov/12215492/)
- van de Geijn B**, McVicker G, Gilad Y, Pritchard JK. 2015. WASP: allele-specific software for robust molecular quantitative trait locus discovery. *Nature Methods* **12**:1061–1063. doi: [10.1038/nmeth.3582](https://doi.org/10.1038/nmeth.3582), PMID: [26366987](https://pubmed.ncbi.nlm.nih.gov/26366987/)
- Welter D**, MacArthur J, Morales J, Burdett T, Hall P, Junkins H, Klemm A, Flicek P, Manolio T, Hindorf L, Parkinson H. 2014. The NHGRI GWAS catalog, a curated resource of SNP-trait associations. *Nucleic Acids Research* **42**:D1001–D1006. doi: [10.1093/nar/gkt1229](https://doi.org/10.1093/nar/gkt1229), PMID: [24316577](https://pubmed.ncbi.nlm.nih.gov/24316577/)
- Whyte WA**, Orlando DA, Hnisz D, Abraham BJ, Lin CY, Kagey MH, Rahl PB, Lee TI, Young RA. 2013. Master transcription factors and mediator establish super-enhancers at key cell identity genes. *Cell* **153**:307–319. doi: [10.1016/j.cell.2013.03.035](https://doi.org/10.1016/j.cell.2013.03.035), PMID: [23582322](https://pubmed.ncbi.nlm.nih.gov/23582322/)
- Wild PS**, Zeller T, Schillert A, Szymczak S, Sinning CR, Deiseroth A, Schnabel RB, Lubos E, Keller T, Eleftheriadis MS, Bickel C, Rupprecht HJ, Wilde S, Rossmann H, Diemert P, Cupples LA, Perret C, Erdmann J, Stark K, Kleber ME, et al. 2011. A genome-wide association study identifies LIPA as a susceptibility gene for coronary artery disease. *Circulation: Cardiovascular Genetics* **4**:403–412. doi: [10.1161/CIRCGENETICS.110.958728](https://doi.org/10.1161/CIRCGENETICS.110.958728), PMID: [21606135](https://pubmed.ncbi.nlm.nih.gov/21606135/)
- Wojczynski MK**, Li M, Bielak LF, Kerr KF, Reiner AP, Wong ND, Yanek LR, Qu L, White CC, Lange LA, Ferguson JF, He J, Young T, Mosley TH, Smith JA, Kral BG, Guo X, Wong Q, Ganesh SK, Heckbert SR, et al. 2013.

- Genetics of coronary artery calcification among african Americans, a meta-analysis. *BMC Medical Genetics* **14**: 75. doi: [10.1186/1471-2350-14-75](https://doi.org/10.1186/1471-2350-14-75), PMID: [23870195](https://pubmed.ncbi.nlm.nih.gov/23870195/)
- Yuan L**, Nikolova-Krstevski V, Zhan Y, Kondo M, Bhasin M, Varghese L, Yano K, Carman CV, Aird WC, Oettgen P. 2009. Antiinflammatory effects of the ETS factor ERG in endothelial cells are mediated through transcriptional repression of the interleukin-8 gene. *Circulation Research* **104**:1049–1057. doi: [10.1161/CIRCRESAHA.108.190751](https://doi.org/10.1161/CIRCRESAHA.108.190751), PMID: [19359602](https://pubmed.ncbi.nlm.nih.gov/19359602/)
- Zhang B**, Day DS, Ho JW, Song L, Cao J, Christodoulou D, Seidman JG, Crawford GE, Park PJ, Pu WT. 2013. A dynamic H3K27ac signature identifies VEGFA-stimulated endothelial enhancers and requires EP300 activity. *Genome Research* **23**:917–927. doi: [10.1101/gr.149674.112](https://doi.org/10.1101/gr.149674.112), PMID: [23547170](https://pubmed.ncbi.nlm.nih.gov/23547170/)