

UC Davis

UC Davis Previously Published Works

Title

Pulse oximetry for the diagnosis and management of acute respiratory distress syndrome

Permalink

<https://escholarship.org/uc/item/48j11824>

Journal

The Lancet Respiratory Medicine, 10(11)

ISSN

2213-2600

Authors

Wick, Katherine D
Matthay, Michael A
Ware, Lorraine B

Publication Date

2022-11-01

DOI

10.1016/s2213-2600(22)00058-3

Peer reviewed



Since January 2020 Elsevier has created a COVID-19 resource centre with free information in English and Mandarin on the novel coronavirus COVID-19. The COVID-19 resource centre is hosted on Elsevier Connect, the company's public news and information website.

Elsevier hereby grants permission to make all its COVID-19-related research that is available on the COVID-19 resource centre - including this research content - immediately available in PubMed Central and other publicly funded repositories, such as the WHO COVID database with rights for unrestricted research re-use and analyses in any form or by any means with acknowledgement of the original source. These permissions are granted for free by Elsevier for as long as the COVID-19 resource centre remains active.

Pulse oximetry for the diagnosis and management of acute respiratory distress syndrome



Katherine D Wick, Michael A Matthay, Lorraine B Ware

The diagnosis of acute respiratory distress syndrome (ARDS) traditionally requires calculation of the ratio of partial pressure of arterial oxygen to fraction of inspired oxygen ($\text{PaO}_2/\text{FiO}_2$) using arterial blood, which can be costly and is not possible in many resource-limited settings. By contrast, pulse oximetry is continuously available, accurate, inexpensive, and non-invasive. Pulse oximetry-based indices, such as the ratio of pulse-oximetric oxygen saturation to FiO_2 ($\text{SpO}_2/\text{FiO}_2$), have been validated in clinical studies for the diagnosis and risk stratification of patients with ARDS. Limitations of the $\text{SpO}_2/\text{FiO}_2$ ratio include reduced accuracy in poor perfusion states or above oxygen saturations of 97%, and the potential for reduced accuracy in patients with darker skin pigmentation. Application of pulse oximetry to the diagnosis and management of ARDS, including formal adoption of the $\text{SpO}_2/\text{FiO}_2$ ratio as an alternative to $\text{PaO}_2/\text{FiO}_2$ to meet the diagnostic criterion for hypoxaemia in ARDS, could facilitate increased and earlier recognition of ARDS worldwide to advance both clinical practice and research.

Introduction

Pulse oximetry monitoring is the standard of care in most hospital settings, but assessment of the severity of hypoxaemia in acute respiratory distress syndrome (ARDS) has traditionally required the measurement of arterial oxygen tension (partial pressure of arterial oxygen; PaO_2) using arterial blood gas analysis. The initial description of ARDS in 1967¹ preceded the patent application for the first modern pulse oximeter by 7 years.² Subsequent definitions of ARDS have relied on the ratio of PaO_2 to fraction of inspired oxygen ($\text{PaO}_2/\text{FiO}_2$) to quantify the severity of hypoxaemia, with a $\text{PaO}_2/\text{FiO}_2$ of less than or equal to 300 mm Hg required for a diagnosis of ARDS.³⁻⁵ Some clinical trials in ARDS, such as PROSEVA, a trial of prone positioning for moderate-to-severe ARDS,⁶ have used $\text{PaO}_2/\text{FiO}_2$ ratio cutoffs for prognostic enrichment.⁷ Thus, among adult patients with ARDS, arterial blood gas measurements are the historical standard for diagnosing and stratifying the severity of hypoxaemia in ARDS. There is increasing interest, however, in the use of non-invasive surrogates to define and manage hypoxaemia in ARDS and other critical illness syndromes.

The use of pulse oximetry as an alternative metric for assessing the hypoxaemia criterion in the diagnosis of ARDS was first introduced in 2007 with the derivation and validation of the ratio of pulse-oximetric oxygen saturation (SpO_2) to FiO_2 ($\text{SpO}_2/\text{FiO}_2$).⁸ Since then, several other non-invasive pulse oximetry-based indices for diagnosis and risk stratification, such as the oxygen saturation index (OSI)^{9,10} and the respiratory rate and oxygenation (ROX) index,¹¹ have been developed and studied in various populations. Other approaches to imputing the $\text{PaO}_2/\text{FiO}_2$ ratio from the $\text{SpO}_2/\text{FiO}_2$ ratio have also been developed.¹²⁻¹⁴ Pulse-oximetric indices in ARDS have been widely adopted in paediatric medicine and in resource-limited settings. For the clinical definition of paediatric ARDS, the severity of hypoxaemia can be assessed using either arterial blood gas measurements or pulse oximetry, although PaO_2 is the

recommended standard.¹⁵ The Kigali modification of the Berlin definition of ARDS includes an $\text{SpO}_2/\text{FiO}_2$ ratio of 315 or lower as the hypoxaemia cutoff for ARDS in settings in which an arterial blood gas analysis is not available.¹⁶ Clinical trials have also used the $\text{SpO}_2/\text{FiO}_2$ ratio or imputed the $\text{PaO}_2/\text{FiO}_2$ ratio for enrolment and as outcomes.^{17,18} Measurement of hypoxaemia with pulse oximetry is of particular interest given a recent proposal

Key messages

- Measurement of the ratio of arterial oxygen tension (PaO_2) to FiO_2 is currently required to satisfy the hypoxaemia criterion for the diagnosis of ARDS; however, arterial blood gas analysis is invasive and is not available in all settings
- Pulse oximetry is widely used for clinical monitoring and decision making in critically ill patients; it is continuously available, non-invasive, easily interpreted, and easily accessible across care settings
- SpO_2 and related indices such as the $\text{SpO}_2/\text{FiO}_2$ ratio have been validated for the clinical diagnosis and management of ARDS; a growing body of evidence also supports the use of pulse oximetry-based measurements in clinical trials and observational studies of ARDS
- Drawbacks of pulse oximetry include reduced accuracy in poor perfusion states and occasional over-estimation of true oxygenation; however, benefits such as earlier recognition of ARDS outweigh these limitations
- Studies are needed to address the possibility of reduced accuracy of pulse oximetry in patients with darker skin pigmentation
- Expanding the use of pulse oximetry to the diagnosis and management of ARDS could help to address underdiagnosis and under-recognition of ARDS, improve understanding of global epidemiology, and facilitate screening for clinical trials

ARDS=acute respiratory distress syndrome. FiO_2 =fraction of inspired oxygen.
 PaO_2 =partial pressure of arterial oxygen. SpO_2 =pulse-oximetric oxygen saturation.

Lancet Respir Med 2022

Published Online
 August 29, 2022
[https://doi.org/10.1016/S2213-2600\(22\)00058-3](https://doi.org/10.1016/S2213-2600(22)00058-3)

Departments of Medicine and Anesthesia, Cardiovascular Research Institute, University of California, San Francisco, CA, USA (K D Wick MD, Prof M A Matthay MD); Division of Allergy, Pulmonary, and Critical Care Medicine, Department of Medicine and Department of Pathology, Microbiology and Immunology, Vanderbilt University School of Medicine, Nashville, TN, USA (Prof L B Ware MD)

Correspondence to:
 Prof Lorraine B Ware, Division of Allergy, Pulmonary, and Critical Care Medicine, Vanderbilt University Medical Center, T1218 MCN, 1161 21st Avenue South, Nashville, TN 37232-2650, USA
lorraine.ware@vumc.org

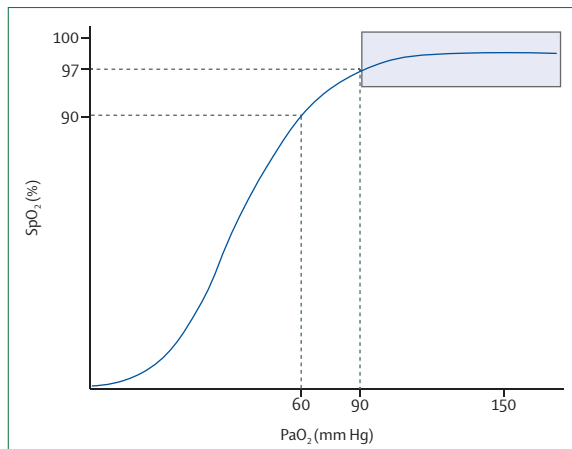


Figure 1: Oxyhaemoglobin dissociation curve

An SpO₂ of 90% corresponds to a PaO₂ of approximately 60 mm Hg, and an SpO₂ of 97% corresponds to a PaO₂ of approximately 90 mm Hg. For SpO₂ values higher than 97%, the curve is flat and PaO₂ cannot be reliably estimated from SpO₂. PaO₂=partial pressure of arterial oxygen. SpO₂=pulse-oximetric oxygen saturation.

to expand the definition of ARDS to include patients on high-flow nasal oxygen (HFNO),¹⁹ many of whom do not routinely have arterial lines in place.

Despite the increasing use of pulse-oximetric measurements in both clinical practice and clinical investigation, there is no existing comprehensive review of their use in critical illness. In this Review, we aim to describe the rationale for an expanded use of pulse-oximetric measurements, describe the definitions, derivations, and uses of established and emerging pulse-oximetric indices, address limitations and special considerations of pulse oximetry in characterising hypoxaemia, and outline how these indices could be integrated into future investigations of ARDS and other critical illness syndromes.

Pulse oximetry: accuracy and advantages

The SpO₂ is a reliable indicator of oxygenation status that is widely used in clinical monitoring. The US Food and Drug Administration requires that pulse oximeters approved for clinical use have a root mean square error between SpO₂ and oxygen saturation measured directly in arterial blood (SaO₂) of no larger than 3% for finger oximeters and 3·5% for ear oximeters.²⁰ Studies of pulse oximetry accuracy in critically ill patients are generally consistent with this guideline.^{21–25} One study found that changes in SpO₂ slightly overpredicted changes in SaO₂, but more than 99% of changes in SpO₂ values were within 4% of true changes in SaO₂ values.²⁶ SpO₂ is also a good predictor of PaO₂ up to saturation values of 97%; above 97% saturation, changes in PaO₂ result in minimal changes in SpO₂ because of the shape of the oxyhaemoglobin dissociation curve (figure 1). Mathematical formulas have been derived with high accuracy for predicting PaO₂ from SpO₂ combined with partial

pressure of oxygen in venous blood (PvO₂), partial pressure of carbon dioxide (pCO₂), pH, carboxyhaemoglobin level, and methaemoglobin level,²⁷ but simple application of the oxyhaemoglobin dissociation curve also performs well when used in undifferentiated critically ill patients.²⁸ The necessary feature of pulse-oximetric measurements for diagnosis and risk stratification of ARDS is that they correctly classify severity rather than exactly predict PaO₂ from SpO₂ (see below). There are some circumstances or conditions in which SpO₂ might be less accurate, such as in low-perfusion states. Additionally, pulse oximetry cannot identify significant hypercarbia as a cause of hypoxaemia in the absence of other tools such as capnography or an arterial blood gas analysis. When thoughtfully interpreted, however, SpO₂ measurement is a useful screening and diagnostic tool that can be confirmed with or complemented by an arterial blood gas analysis as needed and as available.

Pulse oximetry has the advantages of being continuously measurable, easily interpretable, and available in most settings. Continuous pulse-oximetric monitoring in the acute care setting is the widely accepted standard of care where available²⁹ and is used to guide treatment decisions. By contrast, arterial blood gas measurements capture only a snapshot of the patient's oxygenation status. Furthermore, haemoglobin saturation better reflects some of the physiological derangements of ARDS such as intrapulmonary shunt.³⁰ This is probably one reason that in some studies, pulse-oximetric indices of hypoxaemia are more strongly associated with patient outcomes than those that rely on arterial blood gas measurements.^{9,31,32} Arterial blood gas monitoring is also not performed routinely for all patients with hypoxaemia, and therefore patients who would otherwise meet the criteria for ARDS could be missed if no arterial blood gas measurement is obtained. This selection bias for more severe systemic illness despite similarly severe hypoxaemia among patients with arterial blood gas measurements has been demonstrated in the paediatric literature.³³ The increased opportunity for ARDS diagnosis with continuous monitoring of SpO₂ might be one strategy to help to address the persistent underdiagnosis of ARDS,^{34,35} which reduces the implementation of supportive care strategies that are proven to reduce adverse outcomes.³⁵ Because pulse oximetry is more accessible in resource-constrained settings than arterial blood gas measurements, its recognition as a valid diagnostic tool would also improve global estimates of ARDS epidemiology.¹⁶

Pulse oximetry also confers virtually no risk compared with the risks of frequent arterial blood sampling or intra-arterial catheter placement. Repeated blood draws can contribute to iatrogenic anaemia,^{36,37} especially among critically ill patients who often have impaired haematopoiesis.³⁸ Frequent blood draws also increase the risk of intravascular thrombosis and catheter failure.³⁹ Rarely, intra-arterial catheter placement results in serious

vascular complications such as permanent arterial occlusion and pseudoaneurysm formation.⁴⁰ The placement of an intra-arterial catheter also carries risks of bacterial colonisation and blood stream infection that are comparable to those of a central venous catheter.^{41,42} Furthermore, there is no existing evidence that arterial catheters improve clinical outcomes for mechanically ventilated patients.⁴³ Nevertheless, many patients will have other indications for arterial catheter placement or arterial blood gas monitoring, such as haemodynamic monitoring for shock or severe acid-base disturbances. Among patients for whom the primary indication is hypoxaemia, however, avoiding complications associated with repeated blood draws or arterial catheter placement is a major advantage of relying primarily on pulse oximetry rather than serial arterial blood gas measurements. Reducing the number of arterial blood gas measurements can also reduce the cost of care,^{44,45} which benefits both patients and hospital systems.

Pulse-oximetric indices: definitions, derivations, and uses

SpO₂/FiO₂ ratio

The SpO₂/FiO₂ ratio was first described by Rice and colleagues as a valid surrogate for the PaO₂/FiO₂ ratio to quantify hypoxaemia in ARDS non-invasively in adults.⁸ In this study, a linear equation derived from patients enrolled in the ARMA trial⁴⁶ and validated in patients enrolled in the ALVEOLI trial⁴⁷ established the following relationship between the SpO₂/FiO₂ ratio (restricted to SpO₂ ≤97%) and the PaO₂/FiO₂ ratio: SpO₂/FiO₂=64+0.84(PaO₂/FiO₂). A threshold SpO₂/FiO₂ ratio of 315 could be substituted for a PaO₂/FiO₂ ratio of 300 mm Hg for the diagnosis of acute lung injury using American European Consensus Conference (AECC) criteria with 91% sensitivity and 56% specificity, and an SpO₂/FiO₂ ratio of 235 could be substituted for a PaO₂/FiO₂ ratio of 200 mm Hg for the diagnosis of ARDS using AECC criteria with 85% sensitivity and 85% specificity.^{5,8} Subsequently, the SpO₂/FiO₂ ratio has been widely adopted in paediatric critical care as an alternative diagnostic metric to the PaO₂/FiO₂ ratio for the hypoxaemia criterion in paediatric ARDS (with a different numerical threshold, derived and validated in paediatric populations),^{10,15} and the SpO₂/FiO₂ ratio for acute lung injury from the equation proposed by Rice and colleagues was incorporated into the Kigali modification of the Berlin definition of ARDS (table 1).¹⁶ Other studies have also found similar linear relationships between the SpO₂/FiO₂ and PaO₂/FiO₂ ratios,^{48,49} and similar cutoffs for the hypoxaemia criteria to identify mild and moderate ARDS.^{49,50}

Alternative approaches to the imputation of the PaO₂/FiO₂ ratio from the SpO₂/FiO₂ ratio might be more accurate than a simple linear equation because of the sigmoidal shape of the oxyhaemoglobin dissociation curve (figure 1). A log-linear imputation of the PaO₂/FiO₂ ratio was derived by Pandharipande and colleagues from

	Berlin criteria ⁴	Kigali modification ¹⁶
Timing	Within 1 week of a known clinical insult, or new or worsening respiratory symptoms	Within 1 week of a known clinical insult, or new or worsening respiratory symptoms
Oxygenation	PaO ₂ /FiO ₂ ratio ≤300 mm Hg	SpO ₂ /FiO ₂ ratio ≤315
PEEP requirement	At least 5 cm H ₂ O	No PEEP requirement
Chest imaging	Bilateral opacities on chest radiograph or CT not fully explained by effusions, lobar or lung collapse, or nodules	Bilateral opacities on chest radiograph or thoracic ultrasound not fully explained by effusions, lobar or lung collapse, or nodules
Origin of oedema	Not fully explained by cardiac failure or volume overload (need objective assessment, such as echocardiography, to exclude hydrostatic oedema if no risk factor present)	Not fully explained by cardiac failure or volume overload (need objective assessment, such as echocardiography, to exclude hydrostatic oedema if no risk factor present)

ARDS=acute respiratory distress syndrome. FiO₂=fraction of inspired oxygen. PaO₂=partial pressure of arterial oxygen. PEEP=positive end-expiratory pressure. SpO₂=pulse-oximetric oxygen saturation.

Table 1: The Berlin diagnostic criteria for ARDS and the Kigali modification

measurements in a heterogeneous population of patients undergoing general anaesthesia and from patients with ARDS in the ARMA trial database.^{14,46} Among all patients in the ARMA database, SpO₂/FiO₂ ratios of 357, 214, and 89 corresponded to the hypoxaemia thresholds for mild (≤300 mm Hg), moderate (≤200 mm Hg), and severe (≤100 mm Hg) ARDS, respectively, by log-linear imputation of the PaO₂/FiO₂ ratio, and this relationship was slightly but not substantially modified when stratified by positive end-expiratory pressure (PEEP).¹⁴ In a retrospective secondary analysis of 1184 patients from the ARDS Network EDEN,⁵¹ EDEN-Omega,⁵² and SAILS⁵³ trials, the PaO₂/FiO₂ ratio derived from a non-linear equation to impute PaO₂⁵⁴ was correlated with the measured PaO₂/FiO₂ ratio among all patients (ρ=0.72), with stronger correlation among patients with an SpO₂ of less than 97% (ρ=0.90).¹³ ARDS severity was correctly classified in 86% of patients, and severity strata by SpO₂/FiO₂ ratio and by PaO₂/FiO₂ ratio were associated with similar outcomes.¹³ A prospective validation of these findings among 703 mechanically ventilated patients in the intensive care unit (ICU) indicated that non-linear imputation was superior to other imputation methods.¹² Sensitivity and specificity for a PaO₂/FiO₂ ratio of 150 mm Hg or less were 0.87 (95% CI 0.83–0.90) and 0.91 (0.88–0.93), respectively, and for a PaO₂/FiO₂ ratio of less than 300 mm Hg were 0.90 (0.88–0.92) and 0.67 (0.61–0.73).¹² The accuracy of non-linear imputation must be weighed against ease of calculation. A simple linear equation might be the easiest way to impute the PaO₂/FiO₂ ratio at the bedside when an arterial blood gas measurement is not available, unless widely accessible clinical decision tools were to be developed—for example, in response to a modification of the current ARDS diagnostic criteria to include the SpO₂/FiO₂ ratio.

Although the SpO₂/FiO₂ ratio has not been formally adopted as a diagnostic criterion for ARDS in the general adult population outside resource-limited settings, numerous studies support the diagnostic

Panel: Advantages and disadvantages of SpO₂ measurements in ARDS

Advantages

- Continuously available
- Highly sensitive for hypoxaemia
- Easily interpretable
- Non-invasive, no risk of procedural complications
- More readily available than PaO₂ in resource-limited settings

Disadvantages

- Measurement error can be increased by conditions commonly seen in the intensive care unit, such as poor perfusion and vasopressor use, severe hypoxaemia, or acidaemia
- Potential for reduced accuracy in patients with darker skin pigmentation
- Potential for misclassification of diagnosis or severity in ARDS

ARDS=acute respiratory distress syndrome. PaO₂=partial pressure of arterial oxygen. SpO₂=pulse-oximetric oxygen saturation.

validity of the SpO₂/FiO₂ ratio for meeting the ARDS hypoxaemia criterion. The sensitivity and specificity of the Kigali modification for moderate-to-severe ARDS¹⁶ were tested in the Netherlands, where the data needed to assess the Berlin criteria for ARDS⁴ are also readily available. The sensitivity of the Kigali modification was 0.96 (95% CI 0.78–1.00) and the specificity was 0.86 (0.78–0.91); however, specificity improved to 0.93 (0.88–0.97) with the application of more strict ultrasonography criteria, suggesting that the pulse-oximetric criterion was not the primary reason for false-positive diagnoses.⁵⁵ An ongoing international observational study to further validate these findings is currently enrolling patients (the NITWA-ARDS Study; NCT03546699).

The SpO₂/FiO₂ ratio also provides similar or even superior prognostic information to the PaO₂/FiO₂ ratio. In a study that directly compared medical ICU patients diagnosed with ARDS by arterial blood gas analysis versus pulse oximetry in a US tertiary care centre, baseline clinical characteristics and clinical outcomes including mortality were similar.³¹ Additionally, severe ARDS according to the pulse-oximetric criterion had a stronger association with mortality than severe ARDS diagnosed by arterial blood gas analysis, and diagnostic discordance was rare.³¹ Because SpO₂ is continuously available, the SpO₂/FiO₂ ratio can be followed longitudinally more easily than the PaO₂/FiO₂ ratio, increasing available data for prognostication. The SpO₂/FiO₂ ratio time-at-risk profile, or proportion of time that a patient's SpO₂/FiO₂ ratio is less than 150, had slightly better discrimination for mortality than did the lowest PaO₂/FiO₂ ratio as shown by the area under the

receiver operating characteristic curve (AUROC 0.81 vs 0.78, *p*<0.001) or the lowest SpO₂/FiO₂ ratio (AUROC 0.79, *p*<0.001 compared with SpO₂/FiO₂ ratio time-at-risk) in the first 24 h of mechanical ventilation among more than 25 000 mechanically ventilated patients.⁵⁶ The SpO₂/FiO₂ ratio can also be substituted for the PaO₂/FiO₂ ratio in the respiratory component of the Sequential Organ Failure Assessment (SOFA) score,^{14,57} either by direct substitution or imputation. A large retrospective study of more than 35 000 patients compared linear imputation, non-linear imputation, multiple imputation by chained equations, and direct substitution of the SpO₂/FiO₂ ratio for the PaO₂/FiO₂ ratio versus a missing-as-normal substitution of normal values for calculating the SOFA score.⁵⁸ In the overall population, all imputation methods, including direct substitution of the SpO₂/FiO₂ ratio for missing PaO₂/FiO₂ ratios, improved the SOFA score's specificity for mortality compared with the missing-as-normal approach. The improved discrimination for mortality was most pronounced among the subgroup of patients who were missing a PaO₂/FiO₂ ratio at baseline,⁵⁸ suggesting that the SpO₂/FiO₂ ratio adds important prognostic information among patients whose clinical picture does not prompt blood gas analysis.

The SpO₂/FiO₂ ratio has many advantages as a diagnostic tool, but there are some notable limitations (panel), which are discussed in detail in the next section. The SpO₂/FiO₂ ratio cannot be accurately interpreted above saturations of 97%. The use of pulse oximetry also increases the need for caution about the timing of diagnosis (ie, avoiding diagnosis based on isolated or easily corrected low saturation values). Another limitation is possible misclassification of diagnosis or severity (figure 2). This might be acceptable, however, because multiple studies indicate that ARDS diagnosis is likely to be missed or delayed, which has meaningful implications for patient management.^{34,35,59–61} Current interventions for ARDS such as low tidal volume ventilation are unlikely to harm a patient with hypoxaemic respiratory failure who is misclassified as having ARDS according to the SpO₂/FiO₂ ratio,⁶² and might even provide benefit.⁶³ In addition to diagnostic misclassification, the SpO₂/FiO₂ ratio might lead to misclassification of ARDS severity; eg, the linear equation yielding an SpO₂/FiO₂ ratio threshold of 235 for ARDS according to AECC criteria misclassified 15% of patients with a PaO₂/FiO₂ ratio of 200 mm Hg or more.⁸ However, the SpO₂/FiO₂ ratio does not appear to misclassify patients regarding their clinical outcomes and has been shown in some studies to have better prognostic discrimination for mortality than does the PaO₂/FiO₂ ratio.^{9,31} It is therefore unlikely that misclassification of diagnosis or severity with use of the SpO₂/FiO₂ ratio poses a major concern for clinical care, especially when balanced against the possible advantage of facilitating early recognition of ARDS in patients who would otherwise not be diagnosed in a timely manner. As with

the $\text{PaO}_2/\text{FiO}_2$ ratio, meeting the hypoxaemia threshold with the $\text{SpO}_2/\text{FiO}_2$ ratio is not sufficient for diagnosis of ARDS; other diagnostic criteria still apply, including the presence of a likely predisposing risk factor, radiographic findings, and confirmation that pulmonary oedema is not primarily related to fluid overload or cardiac insufficiency.

Oxygen saturation index

Because the oxygenation index (OI)— $(\text{FiO}_2 \times \text{mean airway pressure} / \text{PaO}_2) \times 100$ —incorporates mean airway pressure, some clinicians and investigators consider it to better indicate the severity of respiratory failure than does $\text{PaO}_2/\text{FiO}_2$ by accounting for features such as changes in pulmonary compliance and intrapulmonary shunt.⁶⁴ In several cohorts, the OI has been shown to be superior to the $\text{PaO}_2/\text{FiO}_2$ ratio as an indicator of risk for ARDS mortality.^{65,66} The OI also has good discrimination between therapies that are or are not likely to provide benefit,⁶⁷ and it is frequently used as a primary or secondary endpoint in ARDS clinical trials.⁶⁸ The OSI— $(\text{FiO}_2 \times \text{mean airway pressure} / \text{SpO}_2) \times 100$ —which was first described in the paediatric population, is a non-invasive surrogate for the OI.⁶⁹ The initial derivation of the OSI was shown to have reasonable sensitivity and specificity for defining acute lung injury and ARDS among children using AECC criteria,⁶⁹ and a strong linear relationship between the OI and the OSI has been described in paediatric populations.^{10,70,71} The OI or OSI thresholds are used as the hypoxaemia criteria for ARDS among paediatric patients who are invasively mechanically ventilated, in part because mean airway pressure accounts for differences in baseline ventilator management, including PEEP strategy.¹⁵

Neither the OI nor the OSI has been incorporated into official guidelines as a diagnostic criterion or risk-stratification tool for ARDS in adults, but their prognostic validity has been studied in several settings.^{9,72-74} The non-invasive OSI might have more prognostic validity than the arterial blood gas-based OI. In a retrospective observational study of 329 patients with ARDS, the OSI and OI were closely correlated with each other ($p=0.862$, $p<0.001$), but the OSI was independently associated with mortality when adjusted for age, sex, and severity of illness (adjusted OR for each 1-point increase in OSI 1.228, 95% CI 1.056–1.429, $p=0.008$), whereas the OI was not.⁹ These findings indicate that the OSI is both a good surrogate for the OI and potentially more sensitive for the severity of respiratory failure because it is calculated from the continuously available SpO_2 . Other studies have produced similar results. Among 100 patients retrospectively studied in Taiwan, an OSI of 12 or more conferred a statistically significant increased odds of mortality (OR 5.22, 1.31–20.76). A corresponding threshold OI of 16 or more also conferred an increased odds of mortality, but the effect was smaller and did not meet statistical significance (OR 2.92, 0.98–8.68).⁷⁵ Another retrospective study of 127 patients with hypoxaemic respiratory failure identified a linear

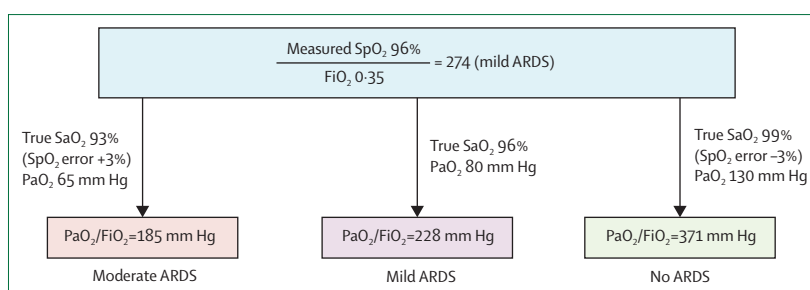


Figure 2: Examples of how error in SpO_2 measurement could lead to misdiagnosis or misclassification of ARDS
Pulse oximeters are accurate to approximately 3%. In some cases, measurement error could result in misdiagnosis or misclassification of the severity of hypoxaemia. ARDS=acute respiratory distress syndrome. FiO_2 =fraction of inspired oxygen. PaO_2 =partial pressure of arterial oxygen. SaO_2 =arterial blood oxygen saturation. SpO_2 =pulse-oximetric oxygen saturation.

equation for imputing the OI from the OSI:⁷⁶ $\text{OI} = (0.6075 \times \text{OSI}) + 3.45$. The authors also studied the discrimination for ARDS severity thresholds. The OSI had excellent discrimination for a $\text{PaO}_2/\text{FiO}_2$ of less than 100 mm Hg (AUROC 0.922) and for a $\text{PaO}_2/\text{FiO}_2$ of less than 200 mm Hg (AUROC 0.869), and good discrimination for a $\text{PaO}_2/\text{FiO}_2$ of less than 300 mm Hg (AUROC 0.787).⁷⁶ The OSI remains relatively understudied in adult ARDS compared with paediatric ARDS for both diagnosis and risk stratification, and the use of non-linear equations to impute PaO_2 for the calculation of the OI from the OSI has not been tested. Further studies of its diagnostic and prognostic validity among adults are required.

ROX index: risk stratification for non-ventilated patients

Expanding the definition of ARDS to include patients on HFNO has recently been proposed.¹⁹ Currently, however, patients on HFNO do not meet ARDS criteria until they progress to non-invasive or invasive mechanical ventilation. One tool for identifying patients at high risk for progression from HFNO to mechanical ventilation is the ROX index, which is calculated as the $\text{SpO}_2/\text{FiO}_2$ ratio divided by respiratory rate. A ROX index of more than 4.88 was shown to have good discrimination (AUROC 0.74) for success of HFNO (avoidance of intubation) in the prospective cohort of patients with pneumonia in which it was first described, whereas a ROX index of less than 3.85 was highly predictive of failure.¹¹ In a subsequent validation cohort, the ROX index was significantly lower at 2 h, 6 h, 12 h, 18 h, and 24 h among patients who eventually required intubation than among those who were successfully managed with HFNO.⁷⁷ The AUROC for a ROX index of more than 4.88 for predicting successful management with HFNO was similar in both the prospective validation cohort and the FLORALI cohort, which was used as a second external validation cohort.⁷⁷ The ROX index also generally performed better than its individual components for predicting successful use of HFNO, although the $\text{SpO}_2/\text{FiO}_2$ ratio also performed

well at most timepoints, including before the initiation of HFNO therapy.⁷⁷ The threshold ROX value of more than 4.88 had poor discrimination for predicting HFNO success in immunocompromised patients, indicating that the performance of the ROX index for risk stratification might differ among clinical populations.⁷⁸

The ROX index has been applied during the COVID-19 pandemic for risk stratification and to avoid delayed intubation and possible associated adverse outcomes^{79,80} as more patients with what would otherwise qualify as ARDS have been managed using HFNO.^{81,82} A Spanish observational study from March to August 2020 found that the baseline ROX index and non-pulmonary SOFA score were the most important variables for predicting progression from HFNO to invasive mechanical ventilation.⁸³ Other studies support the importance of the ROX index in COVID-19, although some identified a different ROX index cutoff as having optimal sensitivity and specificity for successful use of HFNO^{84–89} from that of previous studies of severe pneumonia.^{11,77} The ROX index is also predictive of the success of awake prone positioning^{90,91} and of non-invasive mechanical ventilation for COVID-19 pneumonia.⁹² Differences in the exact ROX index value that predicts successful use of non-invasive respiratory support might be related to different timing of measurements, varying clinician thresholds for intubation during the pandemic, the effect of PEEP for patients on non-invasive mechanical ventilation, and differences in the setting in which patients on HFNO were managed (ICU, wards, or emergency department), as well as demographic and comorbidity differences among patient populations. Each study confirms, however, that the ROX index can be a useful tool for identifying patients who are most likely to be successfully supported using HFNO.

Limitations and special considerations

Generalisability of pulse oximetry-based indices

Limitations of pulse-oximetric tools arise both from the settings and methods used to derive oximetry-based indices and from circumstances that might limit the accuracy of pulse oximetry per se. Owing to the shape of the oxyhaemoglobin dissociation curve, SpO₂ correlates most highly with PaO₂ at SpO₂ values of 97% or less. Thus, the SpO₂/FiO₂ ratio and other oximetric indices are more accurate at saturation levels at or below 97%. Low atmospheric pressure in high-altitude settings also affects the relationship between PaO₂ and SpO₂. The initial derivation and validation of the linear imputation of the PaO₂/FiO₂ ratio from the SpO₂/FiO₂ ratio excluded patients with SpO₂ values of more than 97% and those at more than 1000 m above sea level.⁸ The validity of imputing the PaO₂/FiO₂ ratio at higher altitudes using linear, log-linear, or non-linear formulas outside their original derivation and validation cohorts has been demonstrated in at least one study,⁹³ but applying the linear imputation of the PaO₂/FiO₂ ratio from the

SpO₂/FiO₂ ratio to these populations probably requires further validation. The log-linear imputation of the PaO₂/FiO₂ ratio from the SpO₂/FiO₂ ratio included patients both with and without hypoxaemic respiratory failure, with SpO₂ values of up to 98% and PaO₂/FiO₂ ratios of more than 300 mm Hg included in the derivation population.¹⁴ Patients diagnosed with ARDS at high altitude were also included. Although this strengthens the generalisability of the log-linear imputation, the correlation between the SpO₂/FiO₂ and PaO₂/FiO₂ ratios was not as strong in the entire population as it was when limited to patients with ARDS.¹⁴ The non-linear imputation of PaO₂ from SpO₂ in both the retrospective ARDS cohort and the prospective cohort of mechanically ventilated critically ill patients included any SpO₂ value, but accuracy was better among patients with SpO₂ values of less than 97%; imputed values were adjusted for local barometric pressure.^{12,13} The OSI has not been studied at SpO₂ values above 97%.^{9,15,69} PEEP also slightly modified the relationship between the SpO₂/FiO₂ and PaO₂/FiO₂ ratios in both the linear and log-linear imputations, but the authors in both cases concluded that this was unlikely to substantially affect accuracy.^{8,14} There was no relationship between PEEP and imputed PaO₂/FiO₂, using the non-linear imputation method for imputing PaO₂ from SpO₂.^{12,13} Taken together, these studies indicate that use of the SpO₂/FiO₂ ratio and the OSI should be limited to SpO₂ levels of 97% or less, when possible, and that the inclusion of PEEP in the imputation of the PaO₂/FiO₂ ratio is not necessary.

Sources of measurement error

The accuracy of pulse-oximetric indices also depends on the measurement error of the pulse oximeter. Carboxyhaemoglobin, methaemoglobin, glycohaemoglobin, sickle cell disease, poor perfusion states, acidaemia, nail polish, and motion artifact can all affect the accuracy of pulse oximetry.^{22,94,95} In critically ill patients, acidaemia and poor perfusion states are the most relevant factors. Receiving vasopressors affected the accuracy of the relationship between the PaO₂/FiO₂ and SpO₂/FiO₂ ratios in the retrospective derivation of the non-linear imputation of PaO₂ from SpO₂,¹³ but no effect was observed prospectively.¹² Some studies of critically ill patients have found that acidaemia reduces accuracy when estimating SaO₂ from SpO₂,^{24,26} whereas others have found no effect.²⁵ Imputation studies have generally not investigated the effect of acid-base status, however, because of the requirement for blood gas data. Pulse oximeters are also more likely to overestimate saturation in people with darker skin pigmentation, especially at lower saturations.^{25,96,97} The effect of skin pigmentation on the relationship between SpO₂/FiO₂ and PaO₂/FiO₂ ratios was specifically studied in the prospective validation of the non-linear imputation of PaO₂ from SpO₂ and found to have no effect,¹² but other studies have not investigated whether skin pigmentation

	Study type (year or status)	Population and intervention	Use of pulse oximetry
Paediatric studies*			
Paediatric calfactant in acute respiratory distress syndrome ¹⁰⁶	Multicentre, randomised, blinded, placebo-controlled, phase 3 trial (2013)	110 children aged 37 weeks to 18 years with direct ALI or ARDS randomly assigned to intratracheal exogenous surfactant vs placebo	Participants could be enrolled with a qualifying SpO ₂ /FiO ₂ ratio of ≤250; secondary outcome of changes in oxygenation included change in SpO ₂ /FiO ₂ ratio for patients enrolled using pulse oximetry
Randomised Evaluation of Sedation Titration for Respiratory Failure (RESTORE) ¹⁰⁷	Multicentre, cluster-randomised, controlled, open-label, phase 3 trial (2015)	2449 children aged 2 weeks to 17 years with acute respiratory failure randomly assigned (by study site) to protocolised sedation vs usual care	OSI could be used for a qualifying diagnosis of paediatric ARDS; included patients were considered to be at risk of paediatric ARDS by OI or OSI
Adult studies*			
Effects of recruitment maneuvers in patients with acute lung injury and acute respiratory distress syndrome ventilated with high positive end-expiratory pressure ¹⁰⁸	Prospective, randomised, crossover study (2003)	72 adults with early ALI or ARDS randomly assigned to a high-PEEP strategy in the ALVEOLI trial; participants received recruitment manoeuvres and sham recruitment manoeuvres on alternate days	Primary outcome of change in SpO ₂ during the first 10 min after intervention
A decremental PEEP trial identifies the PEEP level that maintains oxygenation after lung recruitment ¹⁰⁹	Prospective, single-centre clinical trial (2006)	20 adults in a surgical ICU with ALI or ARDS and baseline PEEP ≥8 cm H ₂ O; participants received up to three lung recruitment manoeuvres followed by a decremental PEEP trial	SpO ₂ was used to assess interval response to recruitment manoeuvres before measuring the primary outcome of PaO ₂ /FiO ₂ ratio
Calfactant for Direct Acute Respiratory Distress Syndrome (CARDS) ¹¹⁰	Multicentre, randomised, blinded, placebo-controlled, phase 3 trial (2015)	317 adults with direct ALI or ARDS randomly assigned to exogenous intratracheal surfactant vs placebo	Participants could be enrolled with a qualifying SpO ₂ /FiO ₂ ratio of ≤250; secondary outcome of changes in oxygenation included change in SpO ₂ /FiO ₂ ratio for patients enrolled using pulse oximetry
SB-681323 IV for Subjects at Risk of Acute Lung Injury or ARDS ¹¹¹	Multicentre, randomised, double-blind, placebo-controlled, phase 2 trial (2015)	77 adults with severe trauma at risk of ARDS, as determined by injury severity score, randomly assigned to receive diltiazem vs placebo	Secondary outcome of change in SpO ₂
Lung Injury Prevention Study With Aspirin (LIPS-A) ¹¹²	Multicentre, randomised, double-blind, placebo-controlled, phase 2 trial (2016)	390 adults admitted through the emergency department at risk of ARDS (lung injury prevention score ≥4) randomly assigned to aspirin vs placebo	SpO ₂ /FiO ₂ ratio of <315 was used to screen for development of ARDS (primary outcome), which was confirmed with arterial blood gas
Lung Injury Prevention Study With Budesonide and Beta (LIPS-B) ¹⁸	Multicentre, randomised, double-blind, placebo-controlled, phase 2 trial (2017)	59 adults admitted through the emergency department at risk of ARDS (lung injury prevention score ≥4, requiring supplemental oxygen, and with an ARDS risk factor) randomly assigned to budesonide and fomoterol vs placebo	Enrolment criterion of hypoxaemia was based on need for at least 2 L supplemental oxygen to maintain SpO ₂ of 94–98%; primary outcome was change in SpO ₂ /FiO ₂ ratio
Reevaluation Of Systemic Early Neuromuscular Blockade (ROSE) ¹⁷	Multicentre, randomised, controlled, open-label, phase 2 trial (2019)	1006 adults with moderate-to-severe ARDS (PaO ₂ /FiO ₂ ratio ≤150 mm Hg) and PEEP ≥8 cm H ₂ O randomly assigned to early neuromuscular blockade with deep sedation or no neuromuscular blockade with light sedation target	Qualifying PaO ₂ /FiO ₂ ratio for enrolment was imputed from SpO ₂ in 9% of patients
Treprostinil Sodium Inhalation for Patients At High Risk for ARDS ¹¹³	Single-centre, randomised, double-blind, placebo-controlled pilot trial (2021)	14 adults with a supplemental oxygen requirement or ≥4 L/min and unilateral or bilateral infiltrates on chest x-ray randomly assigned to inhaled treprostinil vs placebo	Patients could be enrolled on the basis of PaO ₂ or SpO ₂ to define hypoxaemia; primary outcome was change in SpO ₂ /FiO ₂ ratio
Adaptive Support Ventilation in Acute Respiratory Distress Syndrome (NCT03715751)	Single-centre, open-label, crossover study (completed; not yet published)	20 adults with ARDS randomly assigned to adaptive support ventilation vs lung protective ventilation	SpO ₂ was used to titrate ventilation and included as a secondary outcome
Trial of Therapeutic Hypothermia in Patients With ARDS: Cooling to Help Injured Lungs (CHILL; NCT04545424)	Multicentre, randomised, controlled, open-label, phase 2 trial (recruiting)	340 adults with moderate-to-severe ARDS (PaO ₂ /FiO ₂ ratio ≤200 mm Hg) and PEEP ≥8 cm H ₂ O randomly assigned to targeted hypothermia or normothermia	Qualifying PaO ₂ /FiO ₂ ratio can be imputed from SpO ₂ ; secondary outcomes include SpO ₂ and OSI
Acetaminophen and Ascorbate in Sepsis: Targeted Therapy to Enhance Recovery (ASTER; NCT04291508)	Multicentre, randomised, double-blind, placebo-controlled, interventional platform trial (recruiting)	900 adults with sepsis-induced hypotension or respiratory failure randomly assigned in parallel to acetaminophen, vitamin C, or placebo	ARDS development is a secondary outcome; ARDS can be diagnosed using SpO ₂ /FiO ₂ ratio or PaO ₂ /FiO ₂ ratio

(Table 2 continues on next page)

	Study type (year or status)	Population and intervention	Use of pulse oximetry
(Continued from previous page)			
COVID-19 studies*			
Safety, tolerability, and outcomes of losartan use in patients hospitalized with SARS-CoV-2 infection: a feasibility study ¹¹⁴	Single-centre, two-cohort feasibility study (2020)	30 adults admitted to hospital with COVID-19-related pneumonia: 14 patients were enrolled prospectively and initiated losartan during hospital stay; 16 patients from a retrospective cohort continued on losartan at home	7-day change in SpO ₂ /FiO ₂ ratio was included as an outcome
Prone positioning in moderate to severe acute respiratory distress syndrome due to COVID-19: a cohort study and analysis of physiology ¹¹⁵	Single-centre, retrospective cohort study (2021)	261 mechanically ventilated adults with COVID-19: 62 patients prone vs 199 controls	Change in OSI on days 1–7 was a secondary outcome
RECOVERY–Respiratory Support: Respiratory Strategies in Patients with Coronavirus COVID-19 – CPAP, High-Flow Nasal Oxygen, and Standard Care (ISRCTN16912075)	Multicentre, adaptive (group-sequential), pragmatic, randomised, controlled, open-label effectiveness trial (completed; not yet published)	4002 adults with COVID-19 and hypoxaemia randomly assigned 1:1:1 to HFNO, CPAP, or standard care	Hypoxaemia inclusion criterion was defined by SpO ₂ ≤94% with FiO ₂ ≥0.4
Cholecalciferol to Improve the Outcomes of COVID-19 Patients (CARED; NCT04411446)	Multicentre, randomised, double-blind, placebo-controlled, phase 4 trial (completed; not yet published)	218 adults with COVID-19-related pneumonia randomly assigned to single capsule of high-dose vitamin D vs placebo	Primary outcome of change in respiratory SOFA score was calculated using SpO ₂ /FiO ₂ ratio rather than PaO ₂ /FiO ₂ ratio
A Multicentre, Single-Treatment Study to Assess the Safety and Tolerability of Lyophilised Lucinactant in Adults With COVID-19 Associated Acute Lung Injury (NCT04389671)	Multicentre, open-label, single-arm, phase 2 trial (recruiting)	20 adults with COVID-19-related ARDS will receive intratracheal exogenous surfactant therapy	Secondary outcomes include SpO ₂ and SpO ₂ /FiO ₂ ratio on day 1 after intervention
Lipid Ibuprofen Versus Standard of Care for Acute Hypoxaemic Respiratory Failure Due to COVID-19 (LIBERATE; NCT04334629)	Multicentre, randomised, blinded, controlled, phase 4 trial (recruiting)	230 adults with COVID-19-related hypoxaemic respiratory failure randomly assigned to ibuprofen vs standard care	Inclusion criterion for hypoxaemic respiratory failure can be met by SpO ₂ /FiO ₂ ratio of ≤315
ALI=acute lung injury. ALVEOLI=Assessment of Low Tidal Volume and Elevated End-Expiratory Volume to Obviate Lung Injury. ARDS=acute respiratory distress syndrome. CPAP=continuous positive airway pressure. FiO ₂ =fraction of inspired oxygen. HFNO=high-flow nasal oxygen. ICU=intensive care unit. OI=oxygenation index. OSI=oxygen saturation index. PaO ₂ =partial pressure of arterial oxygen. PEEP=positive end-expiratory pressure. SOFA=Sequential Organ Failure Assessment. SpO ₂ =ratio of pulse-oximetric oxygen saturation. *Studies listed by trial name or title of published report.			
Table 2: Examples of clinical studies using pulse oximetry in ARDS			

modifies this relationship. Black patients are at higher risk of ARDS mortality than are white patients.⁹⁸ Although it is possible that misclassification of ARDS severity on the basis of inaccurate pulse oximetry readings in patients with dark skin could contribute to this observed disparity, it seems unlikely that it would have a major effect in view of the findings of the study of non-linear imputation.¹²

If the definition of ARDS is expanded to include patients receiving HFNO or other patients managed on open oxygen delivery systems,¹⁹ the relationship between the SpO₂/FiO₂ and PaO₂/FiO₂ ratios will require further validation in these patient groups, especially because of the challenge of accurately measuring delivered FiO₂ for these devices.

Challenges for implementation

There are additional challenges to the widespread adoption of pulse-oximetric indices. If the SpO₂/FiO₂

ratio is adopted as a diagnostic criterion for hypoxaemia in ARDS, would one imputation formula be appropriate for all settings? If so, which formula should be used? Some interventions are targeted on the basis of severity of hypoxaemia in ARDS, such as prone positioning in patients with a PaO₂/FiO₂ ratio of less than 150 mm Hg,⁶ and targeting these interventions to SpO₂/FiO₂ ratios has not been formally studied. There is also still equipoise about whether critically ill patients should be managed with a conservative approach to oxygen therapy (target SpO₂ approximately 90–96%) or a liberal approach (target SpO₂ >96%).^{99–101} If the liberal oxygen strategy is shown to be beneficial and is widely adopted, the number of measurements from which the PaO₂/FiO₂ ratio could reliably be imputed will probably be reduced. A retrospective analysis of two large databases of ICU patients in the USA showed that mortality is lowest for patients with SpO₂ readings that are consistently between 94% and 98%, suggesting that calculating the

SpO_2/FiO_2 ratio and other metrics at saturation values below or equal to 97% is safe when SpO_2 is also above 94%.¹⁰²

A current challenge facing the field of ARDS investigation as a whole is the heterogeneity of this clinically defined syndrome, which has been an obstacle to identifying effective therapeutics and treatable phenotypes. Although the use of pulse-oximetric indices could increase this heterogeneity by increasing the number of patients identified with ARDS, there is also an opportunity to identify patients at an earlier stage of their syndrome and to identify additional phenotypes of ARDS. It is important to note that misclassification of ARDS diagnosis or severity potentially introduced by pulse oximetry might affect the conduct of clinical trials by reducing statistical power to detect an effect.¹⁰³ In other ways, however, increased and earlier recognition of ARDS through the use of the pulse-oximetric measures for screening^{104,105} and diagnosis could be beneficial for the conduct of clinical trials. For example, use of the SpO_2/FiO_2 ratio to increase recognition of ARDS might more accurately reflect background ARDS incidence, increase the number of patients screened for inclusion, improve opportunities for research in resource-limited settings, and better align research populations with clinical practice. In individual cases in whom misclassification is of particular concern—eg, in patients whose SpO_2/FiO_2 ratio is near a threshold value, or in whom a therapeutic intervention could be harmful if severity is misclassified—the diagnosis or severity categorisation could be confirmed with a blood gas measurement as needed and as available, providing that all other diagnostic criteria for ARDS are met. Many clinical trials have already successfully used pulse-oximetric measurements such as the SpO_2/FiO_2 ratio for screening and diagnosis or as outcomes (table 2).^{17,18,106–115} An illustration of how the SpO_2/FiO_2 ratio could be used to screen and enrol patients with ARDS into clinical trials is provided in figure 3. Lastly, although pulse oximetry is an excellent tool for expanding the timely diagnosis, management, and study of ARDS and other critical illnesses in resource-variable settings, most pulse-oximetric indices have primarily been studied either in North American and European populations or in settings where resources such as mechanical ventilation and HFNO are readily available. Pulse-oximetric indices require further study in diverse global settings to be truly universally applicable.

The future of pulse oximetry in ARDS

Pulse-oximetric indices have an important role to play in the future of ARDS research and clinical practice. Pulse oximetry is widely used, continuously available, easily interpreted, and requires minimal equipment or expertise. The SpO_2/FiO_2 ratio is already well characterised in ARDS. Although its implementation in some settings might require further study, the SpO_2/FiO_2 ratio has been

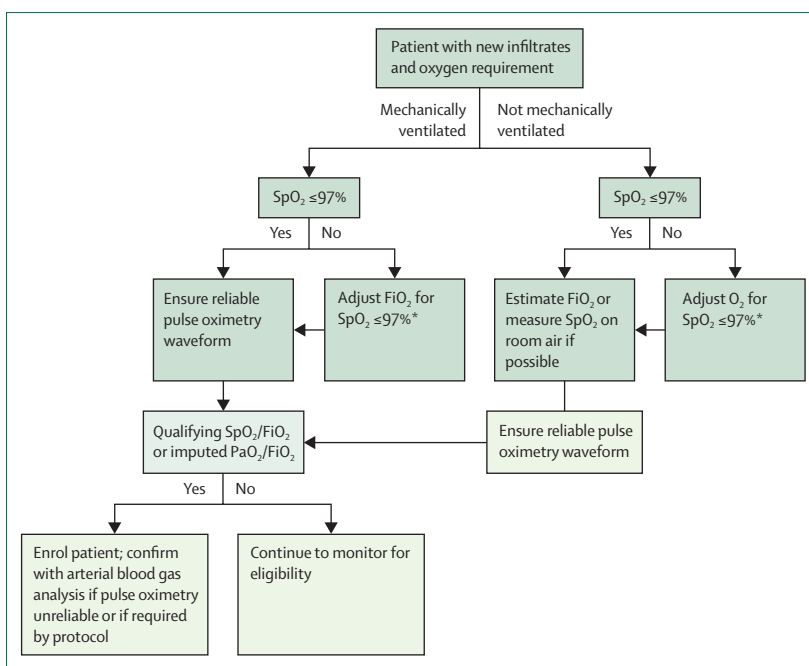


Figure 3: Example flowchart for enrolment of patients into clinical trials or studies using pulse oximetry

Pulse-oximetric measurements can be used in studies of both mechanically ventilated patients with ARDS and patients on other modes of supplemental oxygen (eg, patients at risk of ARDS or non-ventilated patients with acute hypoxaemic respiratory failure). Pulse-oximetric indices should not be used if SpO_2 is above 97% because the oxyhaemoglobin dissociation curve is flat above this value. High-quality pulse oximetry measurements should be made when the patient is at rest, at least 10 min after any changes in FiO_2 , and when there is a high-quality waveform. FiO_2 =fraction of inspired oxygen. PaO_2 =partial pressure of arterial oxygen. SpO_2 =pulse-oximetric oxygen saturation. *Alternatively, assessment can be made using arterial blood gas.

	Qualifying SpO_2 for a PaO_2/FiO_2 ratio threshold of ≤ 100 mm Hg	Qualifying SpO_2 for a PaO_2/FiO_2 ratio threshold of ≤ 150 mm Hg	Qualifying SpO_2 for a PaO_2/FiO_2 ratio threshold of ≤ 200 mm Hg	Qualifying SpO_2 for a PaO_2/FiO_2 ratio threshold of ≤ 300 mm Hg
0.30	Ineligible	<81%	<91%	<97%
0.35	Ineligible	<87%	<94%	<97%
0.40	Ineligible	<91%	<96%	<97%
0.45	<81%	<94%	<97%	<97%
0.50	<86%	<95%	<97%	<97%
0.55	<89%	<97%	<97%	<97%
0.60	<91%	<97%	<97%	<97%
0.65	<93%	<97%	<97%	<97%
0.70	<94%	<97%	<97%	<97%
0.75	<95%	<97%	<97%	<97%
0.80	<96%	<97%	<97%	<97%
0.85	<97%	<97%	<97%	<97%
0.90	<97%	<97%	<97%	<97%
0.95	<97%	<97%	<97%	<97%
1.00	<97%	<97%	<97%	<97%

Thresholds are given for FiO_2 values from 0.30 to 1.00, presented in the left-hand column. Reproduced from Brown and colleagues,¹³ by permission of the American College of Chest Physicians. FiO_2 =fraction of inspired oxygen. PaO_2 =partial pressure of arterial oxygen. SpO_2 =pulse-oximetric oxygen saturation.

Table 3: Specific PaO_2/FiO_2 ratio thresholds based on non-linear imputation of PaO_2 from SpO_2 , by FiO_2

Search strategy and selection criteria

We searched PubMed (MEDLINE) and EMBASE for articles published in English from database inception to Dec 1, 2021, using combinations of the following terms: “acute respiratory distress syndrome”, “adult respiratory distress syndrome”, “ARDS”, “critical illness”, “pulse oximetry”, “SpO₂”, “SpO₂/FiO₂”, “oxygenation index”, “oxygen saturation index”, “OSI”, and “ROX index”. The abstracts of research and review articles and the references of selected studies were screened, and articles were included on the basis of their relevance to the topics covered in this Review. We also searched ClinicalTrials.gov to identify planned and ongoing trials in acute respiratory distress syndrome or critical illness in adults using pulse-oximetric measurements for inclusion or as endpoints.

adopted not only in paediatric and resource-limited settings, but also in the clinical management of adults in some highly resourced areas. The SpO₂/FiO₂ ratio has been used as both an inclusion criterion and an endpoint in some clinical trials and observational studies, supporting its validity as a tool for future research. The OSI is less well studied in adults but offers promise as an important metric to non-invasively characterise the severity of acute hypoxaemic respiratory failure. The ROX index is useful for risk stratification of patients with hypoxaemic respiratory failure who are not mechanically ventilated and has been increasingly implemented during the COVID-19 pandemic.

We recommend adoption of the SpO₂/FiO₂ ratio as a formal diagnostic alternative to the PaO₂/FiO₂ ratio for the hypoxaemia criterion in adult ARDS. However, in certain instances, such as when the SpO₂/FiO₂ ratio is near a threshold severity value, the accuracy of the pulse oximeter is in doubt, or the SpO₂/FiO₂ ratio and clinical picture seem discordant, a confirmatory arterial blood gas analysis might be needed. For accurate diagnosis and risk stratification, the SpO₂/FiO₂ ratio should be calculated when SpO₂ is 97% or less; consistent messaging and education around this issue is needed. The non-linear imputation formula for the PaO₂/FiO₂ ratio correctly classifies more patients than does linear or log-linear imputation, especially when hypoxaemia is severe, but requires a fairly complex calculation.⁵⁴ Clinical decision tools are available, however, that can simplify the application of this equation at the bedside (table 3). A limitation of this formula is that it involves imputation of PaO₂ rather than the PaO₂/FiO₂ ratio directly and, therefore, there is no unique SpO₂/FiO₂ ratio that would always meet the hypoxaemia criterion for ARDS using non-linear imputation. The importance of accurate classification must be weighed against the convenience of a simple linear formula both on an individual patient level and for any changes to the definition of ARDS.

Several areas require additional research, including studies on the relationship between the PaO₂/FiO₂ ratio

and the SpO₂/FiO₂ ratio in patients managed with HFNO, further studies of the OSI in adult ARDS, and additional prospective studies of whether skin pigmentation, altitude, or vasopressor use modify the relationship between the PaO₂/FiO₂ and SpO₂/FiO₂ ratios. If the SpO₂/FiO₂ ratio is adopted as an official diagnostic criterion for hypoxaemia in ARDS, prospective studies of the effect of this change on the epidemiology, severity classification, and outcomes of patients with ARDS will be warranted. In summary, pulse oximetry is an indispensable tool as the definition, study, and management of ARDS move forward in the 21st century.

Contributors

LBW had the initial idea for the Review and its aims. KDW and LBW did the literature search. KDW drafted the initial manuscript. LBW and MAM critically reviewed and revised the manuscript. KDW created the figures and tables.

Declaration of interests

KDW has received research grant support from the US National Institutes of Health (NIH; 5T32GM008440-24). MAM has received research grant support from the NIH (HL134828, HL126456, HL140026, and 143896), the US Department of Defense, and Roche-Genentech for observational studies on acute respiratory distress syndrome; he reports consultancy fees from Citius Pharmaceuticals, Johnson & Johnson, Gilead Pharmaceuticals, Plant Therapeutics, and Novartis pharmaceuticals, outside of the submitted work. LBW has received research grant support from the NIH (HL103836, HL126176, HL158906) and the US Department of Defense, and grants or contracts from Genentech, Boehringer Ingelheim, and CSL Behring; she reports consultancy fees from Foresee, Merck, Citius Pharmaceuticals, Quark, and Boehringer Ingelheim, outside of the submitted work.

Acknowledgments

LBW received funding from a US National Institutes of Health (NIH) grant (HL103836) during the writing of this paper, but no funding was provided specifically for this Review and NIH had no role in the planning or writing of this article. All figures were created in BioRender.com.

References

- 1 Ashbaugh DG, Bigelow DB, Petty TL, Levine BE. Acute respiratory distress in adults. *Lancet* 1967; 2: 319–23.
- 2 Severinghaus JW. Takuo Aoyagi: discovery of pulse oximetry. *Anesth Analg* 2007; 105 (suppl): S1–4.
- 3 Murray JF, Matthay MA, Luce JM, Flick MR. An expanded definition of the adult respiratory distress syndrome. *Am Rev Respir Dis* 1988; 138: 720–23.
- 4 Ranieri VM, Rubenfeld GD, Thompson BT, et al. Acute respiratory distress syndrome: the Berlin definition. *JAMA* 2012; 307: 2526–33.
- 5 Bernard GR, Artigas A, Brigham KL, et al. Report of the American-European consensus conference on ARDS: definitions, mechanisms, relevant outcomes and clinical trial coordination. *Intensive Care Med* 1994; 20: 225–32.
- 6 Guérin C, Reignier J, Richard JC, et al. Prone positioning in severe acute respiratory distress syndrome. *N Engl J Med* 2013; 368: 2159–68.
- 7 Ware LB, Matthay MA, Mebazaa A. Designing an ARDS trial for 2020 and beyond: focus on enrichment strategies. *Intensive Care Med* 2020; 46: 2153–56.
- 8 Rice TW, Wheeler AP, Bernard GR, Hayden DL, Schoenfeld DA, Ware LB. Comparison of the SpO₂/FiO₂ ratio and the PaO₂/FiO₂ ratio in patients with acute lung injury or ARDS. *Chest* 2007; 132: 410–17.
- 9 DesPrez K, McNeil JB, Wang C, Bastarache JA, Shaver CM, Ware LB. Oxygenation saturation index predicts clinical outcomes in ARDS. *Chest* 2017; 152: 1151–58.
- 10 Khemani RG, Thomas NJ, Venkatchalam V, et al. Comparison of SpO₂ to PaO₂ based markers of lung disease severity for children with acute lung injury. *Crit Care Med* 2012; 40: 1309–16.

- 11 Roca O, Messika J, Caralt B, et al. Predicting success of high-flow nasal cannula in pneumonia patients with hypoxemic respiratory failure: the utility of the ROX index. *J Crit Care* 2016; **35**: 200–05.
- 12 Brown SM, Duggal A, Hou PC, et al. Nonlinear imputation of PaO₂/FIO₂ from SpO₂/FIO₂ among mechanically ventilated patients in the ICU: a prospective, observational study. *Crit Care Med* 2017; **45**: 1317–24.
- 13 Brown SM, Grissom CK, Moss M, et al. Nonlinear imputation of PaO₂/FiO₂ from SpO₂/FiO₂ among patients with acute respiratory distress syndrome. *Chest* 2016; **150**: 307–13.
- 14 Pandharipande PP, Shintani AK, Hagerman HE, et al. Derivation and validation of SpO₂/FiO₂ ratio to impute for PaO₂/FiO₂ ratio in the respiratory component of the Sequential Organ Failure Assessment score. *Crit Care Med* 2009; **37**: 1317–21.
- 15 Khemani RG, Smith LS, Zimmerman JJ, Erickson S. Pediatric acute respiratory distress syndrome: definition, incidence, and epidemiology: proceedings from the Pediatric Acute Lung Injury Consensus Conference. *Pediatr Crit Care Med* 2015; **16** (suppl 1): S23–40.
- 16 Rivello ED, Kiviri W, Twagirumugabe T, et al. Hospital incidence and outcomes of the acute respiratory distress syndrome using the Kigali modification of the Berlin definition. *Am J Respir Crit Care Med* 2016; **193**: 52–59.
- 17 Moss M, Huang DT, Brower RG, et al. Early neuromuscular blockade in the acute respiratory distress syndrome. *N Engl J Med* 2019; **380**: 1997–2008.
- 18 Festic E, Carr GE, Cartin-Ceba R, et al. Randomized clinical trial of a combination of an inhaled corticosteroid and beta agonist in patients at risk of developing the acute respiratory distress syndrome. *Crit Care Med* 2017; **45**: 798–805.
- 19 Matthay MA, Thompson BT, Ware LB. The Berlin definition of acute respiratory distress syndrome: should patients receiving high-flow nasal oxygen be included? *Lancet Respir Med* 2021; **9**: 933–36.
- 20 US Food & Drug Administration. Pulse oximeter accuracy and limitations: FDA safety communication. Feb 19, 2021. <https://www.fda.gov/medical-devices/safety-communications/pulse-oximeter-accuracy-and-limitations-fda-safety-communication> (accessed Aug 21, 2022).
- 21 Katayama S, Shima J, Tonai K, Koyama K, Nunomiya S. Accuracy of two pulse-oximetry measurements for INTELlVENT-ASV in mechanically ventilated patients: a prospective observational study. *Sci Rep* 2021; **11**: 9001.
- 22 Van de Louw A, Cracco C, Cerf C, et al. Accuracy of pulse oximetry in the intensive care unit. *Intensive Care Med* 2001; **27**: 1606–13.
- 23 Seguin P, Le Rouzo A, Tanguy M, Guillou YM, Feuillu A, Mallédant Y. Evidence for the need of bedside accuracy of pulse oximetry in an intensive care unit. *Crit Care Med* 2000; **28**: 703–06.
- 24 Wilson BJ, Cowan HJ, Lord JA, Zuege DJ, Zygun DA. The accuracy of pulse oximetry in emergency department patients with severe sepsis and septic shock: a retrospective cohort study. *BMC Emerg Med* 2010; **10**: 9.
- 25 Jubran A, Tobin MJ. Reliability of pulse oximetry in titrating supplemental oxygen therapy in ventilator-dependent patients. *Chest* 1990; **97**: 1420–25.
- 26 Perkins GD, McAuley DF, Giles S, Routledge H, Gao F. Do changes in pulse oximeter oxygen saturation predict equivalent changes in arterial oxygen saturation? *Crit Care* 2003; **7**: R67.
- 27 Ekström M, Engblom A, Ilic A, Holthius N, Nordström P, Vaara I. Calculated arterial blood gas values from a venous sample and pulse oximetry: clinical validation. *PLoS One* 2019; **14**: e0215413.
- 28 Zeserson E, Goodgame B, Hess JD, et al. Correlation of venous blood gas and pulse oximetry with arterial blood gas in the undifferentiated critically ill patient. *J Intensive Care Med* 2018; **33**: 176–81.
- 29 Pretto JJ, Roebuck T, Beckert L, Hamilton G. Clinical use of pulse oximetry: official guidelines from the Thoracic Society of Australia and New Zealand. *Respirology* 2014; **19**: 38–46.
- 30 Dean JM, Wetzel RC, Rogers MC. Arterial blood gas derived variables as estimates of intrapulmonary shunt in critically ill children. *Crit Care Med* 1985; **13**: 1029–33.
- 31 Chen W, Janz DR, Shaver CM, Bernard GR, Bastarache JA, Ware LB. Clinical characteristics and outcomes are similar in ARDS diagnosed by oxygen saturation/FiO₂ ratio compared with PaO₂/FiO₂ ratio. *Chest* 2015; **148**: 1477–83.
- 32 Patel S, Singh G, Zarbiv S, Ghiassi K, Rachoin JS. Mortality prediction using SaO₂/FiO₂ ratio based on eICU database analysis. *Crit Care Res Pract* 2021; **2021**: 6672603.
- 33 Khemani RG, Rubin S, Belani S, et al. Pulse oximetry vs. PaO₂ metrics in mechanically ventilated children: Berlin definition of ARDS and mortality risk. *Intensive Care Med* 2015; **41**: 94–102.
- 34 Bellani G, Laffey JG, Pham T, et al. Epidemiology, patterns of care, and mortality for patients with acute respiratory distress syndrome in intensive care units in 50 countries. *JAMA* 2016; **315**: 788–800.
- 35 Kerchberger VE, Brown RM, Semler MW, et al. Impact of clinician recognition of acute respiratory distress syndrome on evidenced-based interventions in the medical ICU. *Crit Care Explor* 2021; **3**: e0457.
- 36 Bodley T, Chan M, Levi O, et al. Patient harm associated with serial phlebotomy and blood waste in the intensive care unit: a retrospective cohort study. *PLoS One* 2021; **16**: e0243782.
- 37 Lyon AW, Chin AC, Slotsve GA, Lyon ME. Simulation of repetitive diagnostic blood loss and onset of iatrogenic anemia in critical care patients with a mathematical model. *Comput Biol Med* 2013; **43**: 84–90.
- 38 Loftus TJ, Mohr AM, Moldawer LL. Dysregulated myelopoiesis and hematopoietic function following acute physiologic insult. *Curr Opin Hematol* 2018; **25**: 37–43.
- 39 Fleury Y, Arroyo D, Couchepin C, et al. Impact of intravascular thrombosis on failure of radial arterial catheters in critically ill patients: a nested case-control study. *Intensive Care Med* 2018; **44**: 553–63.
- 40 Scheer B, Perel A, Pfeiffer UJ. Clinical review: complications and risk factors of peripheral arterial catheters used for haemodynamic monitoring in anaesthesia and intensive care medicine. *Crit Care* 2002; **6**: 199–204.
- 41 Koh DB, Gowardman JR, Rickard CM, Robertson IK, Brown A. Prospective study of peripheral arterial catheter infection and comparison with concurrently sited central venous catheters. *Crit Care Med* 2008; **36**: 397–402.
- 42 Lucet JC, Bouadma L, Zahar JR, et al. Infectious risk associated with arterial catheters compared with central venous catheters. *Crit Care Med* 2010; **38**: 1030–35.
- 43 Gershengorn HB, Wunsch H, Scales DC, Zarychanski R, Rubenfeld G, Garland A. Association between arterial catheter use and hospital mortality in intensive care units. *JAMA Intern Med* 2014; **174**: 1746–54.
- 44 Merlani P, Garnerin P, Diby M, Ferring M, Ricou B. Quality improvement report: linking guideline to regular feedback to increase appropriate requests for clinical tests: blood gas analysis in intensive care. *BMJ* 2001; **323**: 620–24.
- 45 Martínez-Balzano CD, Oliveira P, O'Rourke M, Hills L, Sosa AF. An educational intervention optimizes the use of arterial blood gas determinations across ICUs from different specialties: a quality-improvement study. *Chest* 2017; **151**: 579–85.
- 46 Brower RG, Matthay MA, Morris A, Schoenfeld D, Thompson BT, Wheeler A. Ventilation with lower tidal volumes as compared with traditional tidal volumes for acute lung injury and the acute respiratory distress syndrome. *N Engl J Med* 2000; **342**: 1301–08.
- 47 Brower RG, Lanken PN, MacIntyre N, et al. Higher versus lower positive end-expiratory pressures in patients with the acute respiratory distress syndrome. *N Engl J Med* 2004; **351**: 327–36.
- 48 Pisani L, Roozeman JP, Simonis FD, et al. Risk stratification using SpO₂/FiO₂ and PEEP at initial ARDS diagnosis and after 24 h in patients with moderate or severe ARDS. *Ann Intensive Care* 2017; **7**: 108.
- 49 Bashar FR, Vahedian-Azimi A, Farzanegan B, et al. Comparison of non-invasive to invasive oxygenation ratios for diagnosing acute respiratory distress syndrome following coronary artery bypass graft surgery: a prospective derivation-validation cohort study. *J Cardiothorac Surg* 2018; **13**: 123.
- 50 Babu S, Abhilash KP, Kandasamy S, Gowri M. Association between SpO₂/FiO₂ ratio and PaO₂/FiO₂ ratio in different modes of oxygen supplementation. *Indian J Crit Care Med* 2021; **25**: 1001–05.
- 51 Rice TW, Wheeler AP, Thompson BT, et al. Initial trophic vs full enteral feeding in patients with acute lung injury: the EDEN randomized trial. *JAMA* 2012; **307**: 795–803.

- 52 Rice TW, Wheeler AP, Thompson BT, deBoisblanc BP, Steingrub J, Rock P. Enteral omega-3 fatty acid, gamma-linolenic acid, and antioxidant supplementation in acute lung injury. *JAMA* 2011; **306**: 1574–81.
- 53 Truweit JD, Bernard GR, Steingrub J, et al. Rosuvastatin for sepsis-associated acute respiratory distress syndrome. *N Engl J Med* 2014; **370**: 2191–200.
- 54 Ellis RK. Determination of PO₂ from saturation. *J Appl Physiol* (1985) 1989; **67**: 902.
- 55 Vercesi V, Pisani L, van Tongeren PSI, et al. External confirmation and exploration of the Kigali modification for diagnosing moderate or severe ARDS. *Intensive Care Med* 2018; **44**: 523–24.
- 56 Adams JY, Rogers AJ, Schuler A, et al. Association between peripheral blood oxygen saturation (SpO₂)/fraction of inspired oxygen (FiO₂) ratio time at risk and hospital mortality in mechanically ventilated patients. *Perm J* 2020; **24**: 24.
- 57 Namendys-Silva SA, Silva-Medina MA, Vásquez-Barahona GM, et al. Application of a modified sequential organ failure assessment score to critically ill patients. *Braz J Med Biol Res* 2013; **46**: 186–93.
- 58 Schenck EJ, Hoffman KL, Oromendia C, et al. A comparative analysis of the respiratory subscore of the Sequential Organ Failure Assessment scoring system. *Ann Am Thorac Soc* 2021; **18**: 1849–60.
- 59 Bellani G, Pham T, Laffey JG. Missed or delayed diagnosis of ARDS: a common and serious problem. *Intensive Care Med* 2020; **46**: 1180–83.
- 60 Needham DM, Yang T, Dinglas VD, et al. Timing of low tidal volume ventilation and intensive care unit mortality in acute respiratory distress syndrome. A prospective cohort study. *Am J Respir Crit Care Med* 2015; **191**: 177–85.
- 61 Bechel MA, Pah AR, Shi H, et al. A quantitative approach for the analysis of clinician recognition of acute respiratory distress syndrome using electronic health record data. *PLoS One* 2019; **14**: e0222826.
- 62 Simonis FD, Serpa Neto A, Binnekade JM, et al. Effect of a low vs intermediate tidal volume strategy on ventilator-free days in intensive care unit patients without ARDS: a randomized clinical trial. *JAMA* 2018; **320**: 1872–80.
- 63 Serpa Neto A, Simonis FD, Barbas CS, et al. Association between tidal volume size, duration of ventilation, and sedation needs in patients without acute respiratory distress syndrome: an individual patient data meta-analysis. *Intensive Care Med* 2014; **40**: 950–57.
- 64 El-Khatib MF, Jamaledine GW. A new oxygenation index for reflecting intrapulmonary shunting in patients undergoing open-heart surgery. *Chest* 2004; **125**: 592–96.
- 65 Seeley E, McAuley DF, Eisner M, Miletin M, Matthay MA, Kallet RH. Predictors of mortality in acute lung injury during the era of lung protective ventilation. *Thorax* 2008; **63**: 994–98.
- 66 Kao HC, Lai TY, Hung HL, et al. Sequential oxygenation index and organ dysfunction assessment within the first 3 days of mechanical ventilation predict the outcome of adult patients with severe acute respiratory failure. *ScientificWorldJournal* 2013; **2013**: 413216.
- 67 Go L, Budinger GR, Kwasny MJ, et al. Failure to improve the oxygenation index is a useful predictor of therapy failure in acute respiratory distress syndrome clinical trials. *Crit Care Med* 2016; **44**: e40–44.
- 68 Wiedemann HP, Wheeler AP, Bernard GR, et al. Comparison of two fluid-management strategies in acute lung injury. *N Engl J Med* 2006; **354**: 2564–75.
- 69 Thomas NJ, Shaffer ML, Willson DF, Shih MC, Curley MA. Defining acute lung disease in children with the oxygenation saturation index. *Pediatr Crit Care Med* 2010; **11**: 12–17.
- 70 Muniraman HK, Song AY, Ramanathan R, et al. Evaluation of oxygen saturation index compared with oxygenation index in neonates with hypoxemic respiratory failure. *JAMA Netw Open* 2019; **2**: e191179.
- 71 Maneenil G, Premprat N, Janjindamai W, Dissaneevate S, Phatigomet M, Thatrimontrichai A. Correlation and prediction of oxygen index from oxygen saturation index in neonates with acute respiratory failure. *Am J Perinatol* 2021; published online Oct 19. <https://doi.org/10.1055/a-1673-5251>.
- 72 Gajic O, Afessa B, Thompson BT, et al. Prediction of death and prolonged mechanical ventilation in acute lung injury. *Crit Care* 2007; **11**: R53.
- 73 Balzer F, Menk M, Ziegler J, et al. Predictors of survival in critically ill patients with acute respiratory distress syndrome (ARDS): an observational study. *BMC Anesthesiol* 2016; **16**: 108.
- 74 Monchi M, Bellenfant F, Cariou A, et al. Early predictive factors of survival in the acute respiratory distress syndrome. A multivariate analysis. *Am J Respir Crit Care Med* 1998; **158**: 1076–81.
- 75 Chen WL, Lin WT, Kung SC, Lai CC, Chao CM. The value of oxygenation saturation index in predicting the outcomes of patients with acute respiratory distress syndrome. *J Clin Med* 2018; **7**: E205.
- 76 Otekeiwebia A, Ajao O, Ingrid P, Foreman M. Performance of oxygen saturation index among adults with type I respiratory failure. *Crit Care Med* 2014; **42**: A1521 (abstr 668).
- 77 Roca O, Caralt B, Messika J, et al. An index combining respiratory rate and oxygenation to predict outcome of nasal high-flow therapy. *Am J Respir Crit Care Med* 2019; **199**: 1368–76.
- 78 Lemiale V, Dumas G, Demoule A, et al. Performance of the ROX index to predict intubation in immunocompromised patients receiving high-flow nasal cannula for acute respiratory failure. *Ann Intensive Care* 2021; **11**: 17.
- 79 Kang BJ, Koh Y, Lim CM, et al. Failure of high-flow nasal cannula therapy may delay intubation and increase mortality. *Intensive Care Med* 2015; **41**: 623–32.
- 80 Matta A, Chaudhary S, Bryan Lo K, et al. Timing of intubation and its implications on outcomes in critically ill patients with coronavirus disease 2019 infection. *Crit Care Explor* 2020; **2**: e0262.
- 81 Calligaro GL, Lalla U, Audley G, et al. The utility of high-flow nasal oxygen for severe COVID-19 pneumonia in a resource-constrained setting: a multi-centre prospective observational study. *EClinicalMedicine* 2020; **28**: 100570.
- 82 McDonough G, Khaing P, Treacy T, McGrath C, Yoo EJ. The use of high-flow nasal oxygen in the ICU as a first-line therapy for acute hypoxemic respiratory failure secondary to coronavirus disease 2019. *Crit Care Explor* 2020; **2**: e0257.
- 83 Mellado-Artigas R, Mujica LE, Ruiz ML, et al. Predictors of failure with high-flow nasal oxygen therapy in COVID-19 patients with acute respiratory failure: a multicenter observational study. *J Intensive Care* 2021; **9**: 23.
- 84 Zucman N, Mullaert J, Roux D, et al. Prediction of outcome of nasal high flow use during COVID-19-related acute hypoxemic respiratory failure. *Intensive Care Med* 2020; **46**: 1924–26.
- 85 Vega ML, Dongilli R, Olaizola G, et al. COVID-19 pneumonia and ROX index: time to set a new threshold for patients admitted outside the ICU. *Pulmonology* 2021; **27**: 475–76.
- 86 Panadero C, Abad-Fernández A, Rio-Ramirez MT, et al. High-flow nasal cannula for acute respiratory distress syndrome (ARDS) due to COVID-19. *Multidiscip Respir Med* 2020; **15**: 693.
- 87 Chandel A, Patolia S, Brown AW, et al. High-flow nasal cannula therapy in COVID-19: using the ROX index to predict success. *Respir Care* 2021; **66**: 909–19.
- 88 Colaïanni-Alfonso N, Montiel G, Castro-Sayat M, et al. Combined noninvasive respiratory support therapies to treat COVID-19. *Respir Care* 2021; **66**: 1831–39.
- 89 Hu M, Zhou Q, Zheng R, et al. Application of high-flow nasal cannula in hypoxemic patients with COVID-19: a retrospective cohort study. *BMC Pulm Med* 2020; **20**: 324.
- 90 Downing J, Cardona S, Alfalasi R, et al. Predictors of intubation in COVID-19 patients undergoing awake proning in the emergency department. *Am J Emerg Med* 2021; **49**: 276–86.
- 91 Cherian SV, Li C, Roche B, et al. Predictive factors for success of awake proning in hypoxemic respiratory failure secondary to COVID-19: a retrospective cohort study. *Respir Med* 2021; **181**: 106379.
- 92 Mukhtar A, Rady A, Hasanin A, et al. Admission SpO₂ and ROX index predict outcome in patients with COVID-19. *Am J Emerg Med* 2021; **50**: 106–10.
- 93 Ortiz G, Bastidas A, Garay-Fernández M, et al. Correlation and validity of imputed PaO₂/FiO₂ and SpO₂/FiO₂ in patients with invasive mechanical ventilation at 2600m above sea level. *Med Intensiva (Engl Ed)* 2021; **S0210-5691(21)00100-5**.
- 94 Chan ED, Chan MM, Chan MM. Pulse oximetry: understanding its basic principles facilitates appreciation of its limitations. *Respir Med* 2013; **107**: 789–99.

- 95 Pilcher J, Ploen L, McKinstry S, et al. A multicentre prospective observational study comparing arterial blood gas values to those obtained by pulse oximeters used in adult patients attending Australian and New Zealand hospitals. *BMC Pulm Med* 2020; **20**: 7.
- 96 Sjoding MW, Dickson RP, Iwashyna TJ, Gay SE, Valley TS. Racial bias in pulse oximetry measurement. *N Engl J Med* 2020; **383**: 2477–78.
- 97 Feiner JR, Severinghaus JW, Bickler PE. Dark skin decreases the accuracy of pulse oximeters at low oxygen saturation: the effects of oximeter probe type and gender. *Anesth Analg* 2007; **105** (suppl): S18–23.
- 98 Erickson SE, Shlipak MG, Martin GS, et al. Racial and ethnic disparities in mortality from acute lung injury. *Crit Care Med* 2009; **37**: 1–6.
- 99 Panwar R, Hardie M, Bellomo R, et al. Conservative versus liberal oxygenation targets for mechanically ventilated patients. A pilot multicenter randomized controlled trial. *Am J Respir Crit Care Med* 2016; **193**: 43–51.
- 100 Young P, Mackle D, Bellomo R, et al. Conservative oxygen therapy for mechanically ventilated adults with sepsis: a post hoc analysis of data from the intensive care unit randomized trial comparing two approaches to oxygen therapy (ICU-ROX). *Intensive Care Med* 2020; **46**: 17–26.
- 101 Barrot L, Asfar P, Mauny F, et al. Liberal or conservative oxygen therapy for acute respiratory distress syndrome. *N Engl J Med* 2020; **382**: 999–1008.
- 102 van den Boom W, Hoy M, Sankaran J, et al. The search for optimal oxygen saturation targets in critically ill patients: observational data from large ICU databases. *Chest* 2020; **157**: 566–73.
- 103 Sjoding MW, Cooke CR, Iwashyna TJ, Hofer TP. Acute respiratory distress syndrome measurement error. *Ann Am Thorac Soc* 2016; **13**: 1123–28.
- 104 Bass CM, Sajed DR, Adedipe AA, West TE. Pulmonary ultrasound and pulse oximetry versus chest radiography and arterial blood gas analysis for the diagnosis of acute respiratory distress syndrome: a pilot study. *Crit Care* 2015; **19**: 282.
- 105 Schmidt MF, Gernand J, Kakarala R. The use of the pulse oximetric saturation to fraction of inspired oxygen ratio in an automated acute respiratory distress syndrome screening tool. *J Crit Care* 2015; **30**: 486–90.
- 106 Willson DF, Thomas NJ, Tamburro R, et al. Pediatric calfactant in acute respiratory distress syndrome trial. *Pediatr Crit Care Med* 2013; **14**: 657–65.
- 107 Curley MA, Wypij D, Watson RS, et al. Protocolized sedation vs usual care in pediatric patients mechanically ventilated for acute respiratory failure: a randomized clinical trial. *JAMA* 2015; **313**: 379–89.
- 108 Brower RG, Morris A, MacIntyre N, et al. Effects of recruitment maneuvers in patients with acute lung injury and acute respiratory distress syndrome ventilated with high positive end-expiratory pressure. *Crit Care Med* 2003; **31**: 2592–97.
- 109 Girgis K, Hamed H, Khater Y, Kacmarek RM. A decremental PEEP trial identifies the PEEP level that maintains oxygenation after lung recruitment. *Respir Care* 2006; **51**: 1132–39.
- 110 Willson DF, Truitt JD, Conaway MR, Traul CS, Egan EE. The adult calfactant in acute respiratory distress syndrome trial. *Chest* 2015; **148**: 356–64.
- 111 Christie JD, Vaslef S, Chang PK, et al. A randomized dose-escalation study of the safety and anti-inflammatory activity of the p38 mitogen-activated protein kinase inhibitor dilmapirom in severe trauma subjects at risk for acute respiratory distress syndrome. *Crit Care Med* 2015; **43**: 1859–69.
- 112 Kor DJ, Carter RE, Park PK, et al. Effect of aspirin on development of ARDS in at-risk patients presenting to the emergency department: the LIPS-A randomized clinical trial. *JAMA* 2016; **315**: 2406–14.
- 113 Ford HJ, Anderson WH, Wendlandt B, et al. Randomized, placebo-controlled trial of inhaled treprostinil for patients at risk for acute respiratory distress syndrome. *Ann Am Thorac Soc* 2021; **18**: 641–47.
- 114 Bolotova O, Yoo J, Chaudhri I, et al. Safety, tolerability, and outcomes of losartan use in patients hospitalized with SARS-CoV-2 infection: a feasibility study. *PLoS One* 2020; **15**: e0244708.
- 115 Shelhamer MC, Wesson PD, Solari IL, et al. Prone positioning in moderate to severe acute respiratory distress syndrome due to COVID-19: a cohort study and analysis of physiology. *J Intensive Care Med* 2021; **36**: 241–52.

Copyright © 2022 Elsevier Ltd. All rights reserved.