

UC Davis

UC Davis Previously Published Works

Title

Expression of CSF1, AR, and SRD5A2 during Postnatal Development of the Boar Reproductive Tract

Permalink

<https://escholarship.org/uc/item/48q1t66k>

Journal

Animals, 12(17)

ISSN

2076-2615

Authors

Katleba, Kimberley
Legacki, Erin
Berger, Trish

Publication Date

2022-08-01

DOI

10.3390/ani12172167

Peer reviewed

Article

Expression of *CSF1*, *AR*, and *SRD5A2* during Postnatal Development of the Boar Reproductive Tract

Kimberley Katleba, Erin Legacki and Trish Berger * 

Department of Animal Science, University of California, Davis, CA 95616, USA

* Correspondence: tberger@ucdavis.edu

Simple Summary: Understanding the initial development of the male reproductive system, including the prostate, should provide insight into malfunctions in the adult male. Although changes in circulating androgens during development are characterized in multiple species, potential changes in the androgen receptor, in the enzyme that converts testosterone to the presumably more potent dihydrotestosterone, and in colony stimulating factor 1, a critical mediator of macrophage influence on organ development, were previously unknown and anticipated to be influenced by androgens and estrogens. Gene expression in the testis, prostate, and seminal vesicles of these three mediators of development, including responses to reduced testosterone or estrogens, were evaluated. Each of these three genes had a unique temporal pattern of expression during postnatal reproductive tract development. However, surprisingly minimal effects of altered steroid signaling were reported on the expression of these presumed pivotal genes.

Abstract: The male reproductive system develops from a minimally functioning gonad and nonfunctioning accessory sex glands in the neonate; sex steroids, presumed to be primary influencers of these changes, have been characterized in multiple species. This study focused on the expression of the androgen receptor as the principal mediator of androgen-induced signaling; the 5 α reductase enzyme that converts testosterone to the more active dihydrotestosterone; and colony stimulating factor 1, a mediator of macrophage influence on organ development in the pig. The time points chosen to evaluate normal developmental changes during the juvenile and prepubertal intervals included the inflection time points of 6.5 weeks of age at the nadir of circulating estradiol and testosterone concentrations in juveniles, and 11 weeks of age, when these concentrations begin to increase. The role of sex steroid signaling in the regulation of gene expression was evaluated by the blockade of androgen and estrogen receptors and reduction in endogenous estrogens. Expression of colony stimulating factor 1 in the testes gradually decreased during development; developmental profiles in the prostate and seminal vesicles were clearly different. Interference with sex steroid signaling had no effect on the expression of these three genes in testicular tissue and minimal and transient effects in prostate and seminal vesicles.

Keywords: 5-alpha reductase type 2; macrophage; leukocyte; estrogen; DHT



Citation: Katleba, K.; Legacki, E.; Berger, T. Expression of *CSF1*, *AR*, and *SRD5A2* during Postnatal Development of the Boar Reproductive Tract. *Animals* **2022**, *12*, 2167. <https://doi.org/10.3390/ani12172167>

Academic Editor: Roy Neville Kirkwood

Received: 30 June 2022

Accepted: 22 August 2022

Published: 24 August 2022

Publisher's Note: MDPI stays neutral with regard to jurisdictional claims in published maps and institutional affiliations.



Copyright: © 2022 by the authors. Licensee MDPI, Basel, Switzerland. This article is an open access article distributed under the terms and conditions of the Creative Commons Attribution (CC BY) license (<https://creativecommons.org/licenses/by/4.0/>).

1. Introduction

Development of the male reproductive system continues from the prenatal interval through the juvenile and pubertal intervals, during which functional competence is gradually acquired. The testes may be considered the foci of this development, but changes in additional organs, including the accessory sex glands, are part of this postnatal development. Laboratory mice complete this process expeditiously, whereas the slightly slower development in pigs allows more distinct separation of these developmental events. Profiles of systemic hormones in the postnatal male pig have been characterized previously [1–5] and include a gradual drop in testosterone and estradiol from birth to 6 weeks of age, an approximate month with low circulating testosterone and estradiol, followed

by a gradual increase in circulating levels, which reach a peak at puberty (approximately 4–5 months of age). The pattern of steroid concentrations in testicular tissue resembles circulating levels [6] and may be more significant than circulating concentrations for testicular development. The ability to convert steroids to their more active steroid metabolites (e.g., testosterone to dihydrotestosterone (DHT)) may have local effects on development, particularly in accessory sex glands. Contributions from macrophages and other components of the immune system to organogenesis are now recognized [7–9] and may contribute to reproductive tract development as well, but components and their roles have only been only minimally characterized in the postnatal development of the reproductive tract. In other systems, macrophage functions are influenced by estrogen and androgen signaling (reviewed by [10,11]).

Circulating testosterone is converted intracellularly to DHT by 5 α -reductase enzymes in peripheral target tissues. In human males, DHT has 2–5 times higher binding affinity than testosterone for the androgen receptor (AR) [12], a 10-fold higher potency for inducing AR signaling than testosterone in the rat prostate [13] and it is essential for the normal development of the prostate, penis, and scrotum in multiple species (reviewed [14]). DHT is the principal active metabolite of testosterone within the boar reproductive tract, with varying amounts present in different tissues [15,16].

The 5 α -reductase type 1 isozyme (SRD5A1) has low expression in human embryonic tissues and is expressed at birth in non-genital skin, liver, and certain brain regions, with relatively high expression throughout postnatal human life. Its expression in the epididymis, seminal vesicles, prostate, and genital skin remains low [17]. The 5 α -reductase type 2 isozyme (SRD5A2) is expressed in external genital tissues early in gestation. In adulthood, its expression is high in the human epididymis, seminal vesicles, prostate, genital skin, and liver, but remains low in other tissues [18,19]. Presence of 5 α -reductase has been detected in the prepubertal and pubertal boar testis [20], and SRD5A2 specifically has been detected in the postpubertal boar epididymis [21]. Both SRD5A1 and SRD5A2 have been identified in the prepubertal and postpubertal boar prostate [22], although type 2 appears to be the dominant isozyme [21].

While androgens are thought to be the major hormone group responsible for male reproductive development, estrogens play a major role in maintaining accessory sex glands postpubertally in the boar [23]. Involvement of estradiol in development of accessory sex glands in juvenile pigs is unknown, although nuclear estrogen receptors (ESR1 and ESR2) are present in the reproductive tract of the young juvenile male pig, as expected from other species (reviewed by [24]). Reducing endogenous estrogens during the juvenile interval in the boar (by inhibiting synthesis from androgen by the aromatase enzyme, CYP19A, with the aromatase inhibitor letrozole) delays testicular maturation [25] and postpubertal accessory sex glands tend to be smaller [26]. Changes in endogenous estrogens might affect macrophages and their effect on tissue development, as is the case in the female reproductive tract [27,28]. However, whether estradiol modulates gene expression and specifically macrophage-mediated signaling in accessory sex glands from juvenile pigs is unknown.

Macrophages, beyond classical immune function, play a role in organogenesis, spermatogenesis, and hormone production. Macrophage presence in the male reproductive tract was previously reported; macrophages may represent one fourth of the cells in the testicular interstitium, although density does vary among species [29]. In seminal vesicles, CD45+ leukocytes, a categorization that includes macrophages, are present in the lumens of the secretory epithelium [30]. Macrophages also appear in the stroma of the seminal vesicles and prostate and are dependent on colony stimulating factor 1 (CSF1) for recruitment, maintenance, and proliferation, as in other tissues [31–33]. In the porcine testis, Leydig cells appeared to be the predominant source of CSF1 by immunolabelling and CSF1 presence was also documented in the porcine prostate and seminal vesicles [34]. Consistent with CSF1 presence in Leydig cells, testicular macrophages are intimately associated with Leydig cells and can directly secrete factors that influence steroidogenesis in Leydig

cells [35]. In the adult, testicular macrophages play a role in Leydig cell development by providing growth and differentiating factors [36]. Hence, macrophages, CSF1 and steroidogenesis are interconnected in the testis. Presence of SRD5A in human leukocytes [37], with DHT as the main product [38], also connects human macrophages with localized steroid signaling, which is consistent with similar results in murine macrophages [39]. The AR on macrophages are connected with an AR-induced cascade of macrophage recruitment, followed by proliferation of prostate tissue in adult prostatic pathologies [40,41], further suggesting interaction of CSF1, AR and SRD5A2 with each other and with macrophage involvement in normal male reproductive tract development and maturation.

The pig is an ideal species for further evaluation of the contributions of DHT, macrophages, AR and CSF1 to postnatal reproductive tract development in a relatively short developmental time frame. Similarities to humans in genetics, anatomy, and physiology mean such comparisons are particularly valuable. Furthermore, the porcine immune system is well-characterized [42]. The pig is also an excellent animal model to study the effects of estrogens on the mammalian male reproductive tract because the testes produce high levels of circulating estrogens [43,44] and reducing endogenous estrogens does not detectably alter androgens, pituitary gonadotropins, inhibin or prolactin [6,45]. Although the boar has a longer life span (around 1–2 decades) than most laboratory rodent species, puberty occurs at 4–6 months of age [46–48]. This time frame allows for the study of specific time points during reproductive tract development.

The present studies were designed to further our understanding of postnatal reproductive tract development (testis, prostate, and seminal vesicles) by evaluating expression of *CSF1*, which contributes to macrophage recruitment and proliferation, and *SRD5A2* and *AR* as potentially important local regulators of this development. Changes in gene expression mediated by androgen and estrogen signaling were anticipated and evaluated using an aromatase inhibitor, letrozole, to reduce endogenous estrogen and an ESR1 and ESR2 antagonist, fulvestrant (also a GPER agonist), to evaluate estrogen signaling, and an AR antagonist, flutamide, to evaluate androgen signaling.

2. Materials and Methods

2.1. Animals

Pigs shared a common genetic background, originating as breeding stock and semen originating from PIC North America (Hendersonville, TN, USA). Tissues were obtained from 67 animals following euthanasia at the designated ages, flash frozen on dry ice, and stored at -80°C prior to analysis of gene expression. Additional pieces of tissue were fixed in 4% paraformaldehyde in PBS, dehydrated, and embedded in paraffin for immunolocalization of specific proteins.

Tissues from 32 control animals were used to describe typical gene expression at 2, 6.5, 11, 16, 20 and 40 weeks of age (Table 1). The 2-week age represents an early juvenile age; at 6.5 weeks of age, the neonatally high, systemic testosterone declined to a low level; at 11 weeks of age, systemic testosterone begins to increase, representing a prepubertal transition point; 16 weeks of age represents a pubertal landmark, as a few sperm are typically present in the epididymis, at 20 weeks of age, these animals are sufficiently mature to have enough sperm in the cauda epididymis to inseminate a single female so represent either late puberty or early maturity, and animals at 40 weeks of age represent a more mature state. All control animals were treated with canola oil vehicle weekly from 1 week of age through to 6 weeks of age (except for animals providing tissues recovered at 2 weeks of age). The effect of endogenous estradiol was examined in additional littermates (Table 1) treated weekly with 0.1 mg letrozole (CGS 20267; 4-4'-(1 H-1,2,3-triazol-1-yl-methylene)-bis-benzonitrile; Ciba-Geigy, Basel, Switzerland)/kg body weight, beginning at 1 week of age and ending at 6 weeks of age or 1 week before tissue collection, whichever came first. Six additional animals received daily treatment with fulvestrant, an ESR1 and ESR2 antagonist and GPER agonist (Tocris USA, Ellisville, MO, USA) at a minimum dose of 125 μg /kg body weight through 6.5 weeks of age; these six animals were littermates to

six control animals and six animals treated with letrozole and were described previously, including the systemic hormone levels [45]. Eight additional males were treated daily with 10 mg flutamide/kg body weight [49] from 1 to 6 weeks of age, with four animals providing tissues at 6.5 weeks of age and four animals providing tissues at 11 weeks of age. These animals were littermates to control animals and to animals treated with letrozole.

Table 1. Number of littermate pigs providing specified tissue at each age ¹.

Age (Treatment)	Testis	Prostate	Seminal Vesicles
2 weeks (control)		4	4
6.5 weeks (control)	9	6	5
11 weeks (control)	5	6	6
16 weeks (control)	4	3	3
20 weeks (control)	3	3	3
40 weeks (control)	3	4	6
2 weeks (letrozole)		4	4
6.5 weeks (letrozole)	9	4	4
11 weeks (letrozole)	5	5	5
20 weeks (letrozole)		3	3
6.5 weeks (fulvestrant)	6	4	4
6.5 weeks (flutamide)		4	3
11 weeks (flutamide)	4	4	4

¹ All comparisons of responses to altered hormone signaling with control animals utilized only littermates to the specific treated animals.

Blood collected from control boars between 2 and 15 weeks of age was stored in PAXgene blood RNA tubes at $-20\text{ }^{\circ}\text{C}$ (PreAnalytiX; Qiagen, Germantown, MD, USA; cat # 762165) or Tempus blood RNA tubes stored at $4\text{ }^{\circ}\text{C}$ (ThermoFisher Scientific; Waltham, MA, USA; cat # 4342792) prior to analyzing peripheral blood leukocyte mRNA.

2.2. RNA Extraction and cDNA Synthesis

Frozen tissues were immersed in liquid nitrogen and pulverized in a mortar and pestle. Blood RNA tubes were centrifuged at $5000\times g$ for 10 min. Total RNA was extracted from both types of samples using Trizol[®] reagent (1 mL; Invitrogen; Waltham, MA, USA) and total RNA was purified by chloroform extraction (0.2 mL), then incubated at room temperature for 3 min. Samples were centrifuged for 15 min at $12,000\times g$ at $4\text{ }^{\circ}\text{C}$ and the aqueous layer was collected and precipitated with 0.5 mL 100% isopropanol, incubated at room temperature for 10 min, then centrifuged for 10 min at $12,000\times g$ at $4\text{ }^{\circ}\text{C}$. The supernate was removed and the pellet was washed with 75% ethanol, vortexed, then centrifuged at $7500\times g$ at $4\text{ }^{\circ}\text{C}$, and the washing procedure repeated. The RNA pellet was air dried and re-suspended in RNase-free water, then incubated at $55\text{ }^{\circ}\text{C}$. RNA concentration was determined using a NanoDrop 2000 spectrophotometer (ThermoFisher Scientific), the A260/A280 used to evaluate RNA purity, and RNA stored at $-80\text{ }^{\circ}\text{C}$.

RNA samples were treated with DNase (M6101; Promega; Madison, WI, USA) to remove genomic DNA. First strand cDNA synthesis was completed with the ThermoFisher Scientific RevertAid first strand cDNA synthesis kit (#K1621). A negative control, containing all reagents except the RNA template, and a positive control using GAPDH (glyceraldehyde-3-phosphate dehydrogenase) were included with each run [50].

2.3. qRT-PCR

Real-time quantitative PCR reactions were set up in triplicate using Fast SYBR Green mastermix (#4385612; Applied Biosystems; Waltham, MA, USA) and an Applied Biosystems 7500 Fast Real Time PCR machine. Final reaction volume was 20 μ L, containing cDNA synthesized from 5 ng RNA and the amplification temperature program was 95 °C for 20 s, followed by 40 cycles of 95 °C for 3 s and 60 °C for 30 s; after amplification, the melt curve was initiated. Standard curves were generated for all primer pairs (Table 2; 75 nM for AR primers and 200 nM for remaining primers) using pooled cDNA and using sequential tenfold dilutions; efficiencies were between 90% and 110%. PCR product sizes were verified by agarose gel electrophoresis following traditional PCR and product purity was determined by qRT-PCR melting temperature. The reference gene used was *SPAG7*, as the RNAseq data showed no change in age within the testis and other studies have shown that some standard reference genes, such as GAPDH and ACTB (actin beta), can change in the testis with age [50,51]. Furthermore, evaluation of mRNA levels in multiple human tissues, including the testis, epididymis, seminal vesicles and prostate, indicated reasonably uniform expression of *SPAG7* across all tissues, except skeletal muscle, cardiac muscle and tongue [52,53]; a pilot analysis indicated that *SPAG7* and *GAPDH* would provide equivalent results as the reference gene for seminal vesicle and prostate tissue from developing boars. The cycle threshold (Ct) for the reference gene (average of the three wells) was subtracted from the average Ct for the gene of interest (Ct gene of interest—Ct reference gene) for each sample to give the delta Ct (Δ Ct); the lower the Δ Ct, the greater the level of gene expression.

Table 2. Primers used in qPCR analysis of gene expression.

Gene	Gene ID	Forward Primer	Reverse Primer	Source	Size
<i>SPAG7</i> ⁴⁹	NM_001243921.1	GAGCTGGATTCCTACCGTCG	CCTTCAGCCTCCGTTTCTCC	Millipore Sigma	70
<i>SRD5A1</i>	XM_003134156.6	TCTGCACCTACAACGGCTAC	CCTGCTAGAAATCGGGGGTC	Integrated DNA Technologies	94
<i>SRD5A2</i>	NM_213988.1	ATGGATCGGCTATGCCTTGG	AGGGCTTTTCGAGACTTGGG	Invitrogen	147
<i>AR</i>	NM_214314.2	TACCTGTGTGCCAGCAGAAAT	AGCTCCCAGTGCATCCCT	Invitrogen	108
<i>CSF1</i>	NM_001244523.1	GGTGTCCGAGAAGTGTAGCC	ACACTGGATCCGTCAACTGC	Integrated DNA Technologies	137

2.4. Immunohistochemistry

Tissues were fixed in 4% paraformaldehyde in PBS, processed for paraffin embedding and sectioned for immunohistochemical detection of *SRD5A2*. Following rehydration, sections were blocked with normal goat serum (Vector Elite ABC Rabbit Kit; Vector Laboratories, Burlingame, CA, USA) and incubated for 2 h at room temperature with 1:250 rabbit polyclonal anti-human *SRD5A2* (Santa Cruz, CA, USA; cat # SC-20659). Negative control sections were incubated with normal rabbit IgG. After rinsing, sections were incubated with biotinylated anti-rabbit secondary antibody (Vector Elite ABC Rabbit Kit; cat # PK-6101), followed by incubation with ABC reagent. Labeling was visualized using Nova Red (Vector Laboratories; cat # SK-4800). Slides were examined with brightfield illumination using a 20 \times objective. A QImaging Micropublisher 3.3 digital camera and QCapture Pro software (QImaging Corporation, Burnaby, BC, Canada) were used to record images. Scoring of *SRD5A2* immunolabeling in the prostate (scoring from 1 to 5, with 5 labeling being the darkest; viewer blind to treatment) was analyzed in a minimum of 10 fields ($2.43 \times 10^6 \mu\text{m}^2$

per field) from each tissue section. All samples from a litter were immunolabeled for SRD5A2 in the same assay and all ages were represented in each assay to minimize effects of potential variation among the individual assays. Labeling intensity standards were prepared to normalize scoring. The leukocyte marker CD45 was similarly detected with some modifications. Slides were incubated overnight at 4 °C with 1:10 mouse monoclonal IgG2a to pig CD45 (AbD Serotec; cat # MCA1447). Negative control sections were incubated with normal mouse IgG. ABC amplification of the signal from the Vector Elite ABC Mouse Kit (Vector Laboratories; cat # PK-6102) was used and labeling was visualized using an AEC Chromagen (Vector Laboratories; cat # SK-4200). Leukocyte localization was analyzed in a minimum of 5 fields from each tissue section. The macrophage specific marker CD68 was detected with a similar procedure. Slides were incubated overnight at 4 °C with 1:100 goat polyclonal IgG to human CD68 (R&D Systems; cat # AF2040) and negative control sections were incubated with normal goat IgG. Labeling was visualized with the AEC Chromagen (Vector Laboratories; cat # SK-4200) following ABC amplification of the signal (Vector Elite ABC Goat Kit, Vector Laboratories; cat # PK-6105). Macrophage localization was analyzed in a minimum of 5 fields from each tissue section.

2.5. Statistical Analysis

The Δ Cts from qRT-PCR data for *SRD5A1*, *SRD5A2*, *AR*, and *CSF1* and intensity of IHC labeling data were subjected to analysis of variance (ANOVA) or regression using SAS statistical programs (Proc GLM; SAS Statistical Software, SAS Institute Inc., Cary, NC, USA). Treatment was considered a fixed factor and data from the manipulation of steroid signaling were analyzed separately at each age by ANOVA. Response to age was evaluated using a 1-way factorial with age as a fixed factor and differences in expression among the organs evaluated, with organ and age as fixed factors. Contrasts were used to evaluate differences among ages and organs, although degrees of freedom did not allow for all possible comparisons. Values are presented as least squares means \pm pooled standard error of the mean (SEM). Differences were considered significant when $p < 0.05$.

3. Results

3.1. Gene Expression and Leukocyte/Protein Localization during Normal Testicular Development

Expression of *CSF1* mRNA decreased from the prepubertal through the postpubertal time points within the testis (6.5 vs. 40 weeks, $p < 0.05$; Figure 1). Leukocytes (including macrophages) appear early within the testis (Figure 2). At 6.5 weeks of age, leukocytes are already in close proximity to the seminiferous tubules, where they remain at 20 weeks of age. Testicular expression of *AR* mRNA was affected by age, being highest at the prepubertal transitional time point (11 weeks) (11 vs. 20 weeks, $p < 0.01$; 11 vs. 16 weeks $p < 0.05$; 6.5 vs. 11 weeks and 6.5 vs. 40 weeks $p < 0.05$; Figure 1). Testicular expression of *AR* was positively correlated with *CSF1* expression in vehicle-treated animals ($p < 0.0005$; $R = 0.69$; Figure 3). Testicular expression of *SRD5A2* mRNA was also affected by age (Figure 1). Overall, expression of *SRD5A2* mRNA is relatively low in the testis, but highest prepubertally at the prepubertal transition point (11 vs. 16 weeks, 11 vs. 20 weeks, 6.5 vs. 40 weeks, $p < 0.0001$; Figure 1). Testicular expression of *CSF1* and *SRD5A2* mRNAs was also positively and significantly correlated ($R = 0.55$, $p < 0.05$). Expression of *SRD5A2* mRNA and *AR* mRNA within the testis was positively correlated as well ($R = 0.67$; $p < 0.0005$). Expression of *SRD5A2* protein was observed in a small, disperse population of cells within the testicular interstitium at the prepubertal and transitional time points and detected in visibly fewer cells at the pubertal time point (Figure 4).

3.2. Gene Expression and Leukocyte/Protein Localization during Normal Prostate Development

Expression of *CSF1* in the prostate differed from the testicular profile, with an increase at the prepubertal transition point (6.5 vs. 11 weeks, $p < 0.001$; Figure 1) followed by a decrease through the pubertal and postpubertal time points. Leukocytes (including macrophages) are located as clusters in the prostate stroma prepubertally (Figure 5), but

appear to be more dispersed during the transition to puberty. At this transition, an increased number of macrophages appear to be present, particularly along the connective tissue and in close proximity to blood vessels. By 16 weeks of age and in more mature animals, leukocytes, including macrophages, are in close proximity to the epithelium (and within the epithelium) and are no longer clustered, but rather appear as scattered single cells. Expression of *AR* mRNA in the prostate was low at 6.5 weeks of age (2 vs. 6.5 weeks and 6.5 weeks vs. 11 weeks, $p < 0.001$; Figure 1). In contrast, prostatic expression of *SRD5A2* mRNA decreased significantly from prepubertal through postpubertal time points (2 vs. 40 weeks, $p < 0.001$; Figure 1). This reduction was most pronounced between the juvenile to prepubertal time points (6.5 vs. 11 weeks, $p < 0.05$). The *SRD5A2* protein was highly expressed in prostates from prepubertal boars, consistent with local synthesis and was less prominent in older boars (Figure 6A). Labeling intensity was highest at 6.5 weeks of age for both the epithelium (2 vs. 6.5 weeks $p < 0.05$ and 6.5 vs. 11 weeks, $p < 0.001$; Figure 6A) and stroma (2 vs. 6.5 weeks, $p < 0.05$ and 6.5 vs. 11 weeks, $p < 0.05$), with the labeling intensity being higher in the epithelium than the stroma at the early time points. Typically, protein expression had the same age profile as gene expression.

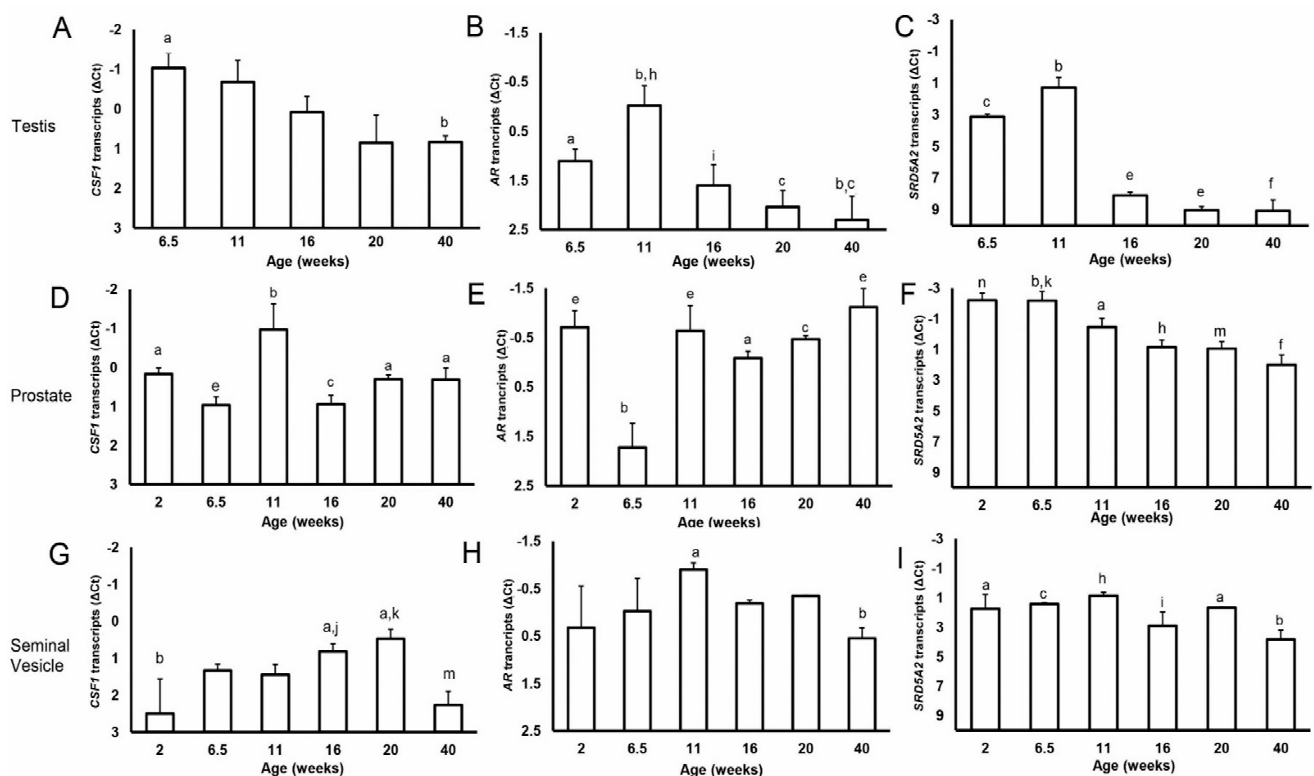


Figure 1. Changes in gene expression (*CSF1*, *AR*, and *SRD5A2*) with age in control boars. (Graphs A,D,G) represent estimates of relative *CSF1* expression in the testis, prostate, and seminal vesicles respectively. (Graphs B,E,H) represent estimates of relative *AR* expression in the testis, prostate, and seminal vesicles, respectively. (Graphs C,F,I) represent estimates of relative *SRD5A2* expression in the testis, prostate and seminal vesicles, respectively. Values represent means and SEM. Columns labeled a,b; h,i; or j,m without common letters differ, $p < 0.05$. Columns labeled b,c; h,n; or k,m without common letters differ, $p < 0.01$. Columns labeled b,e; b,h; c,f; or n,f without common letters differ, $p < 0.001$.

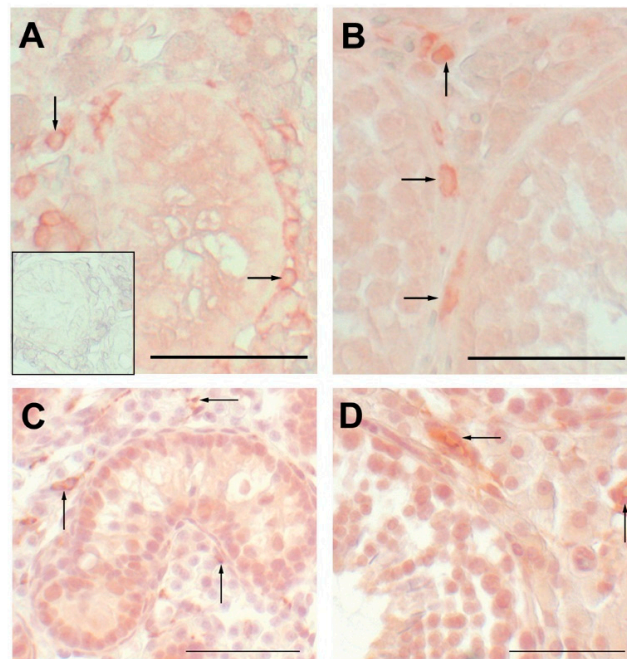


Figure 2. Immunohistochemical labeling of leukocytes (CD45 positive in **A,B**) and specifically for macrophages (CD68 positive in **C,D**) in the testis. Arrows point to individual leukocytes in testis from a 6.5-week-old boar in (**A**), from a 20-week-old boar in (**B**) and to macrophages in hematoxylin counterstained testis from 6.5-week-old boar in **C** and from a 20-week-old boar in **D**. Inset is a normal serum control and is similar to the negatives for the other treatment and age. Scale bar is 50 μm .

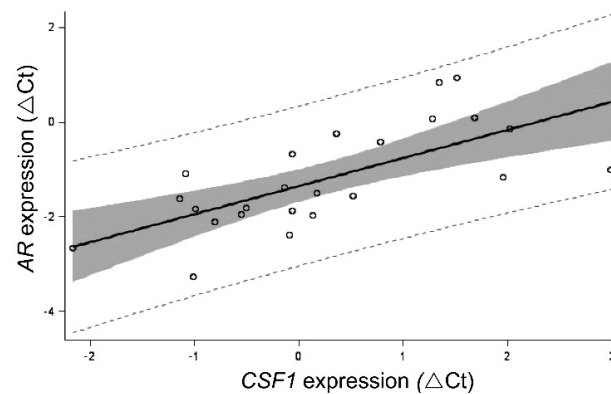


Figure 3. Relationship between *CSF1* expression and *AR* expression in testes from control boars.

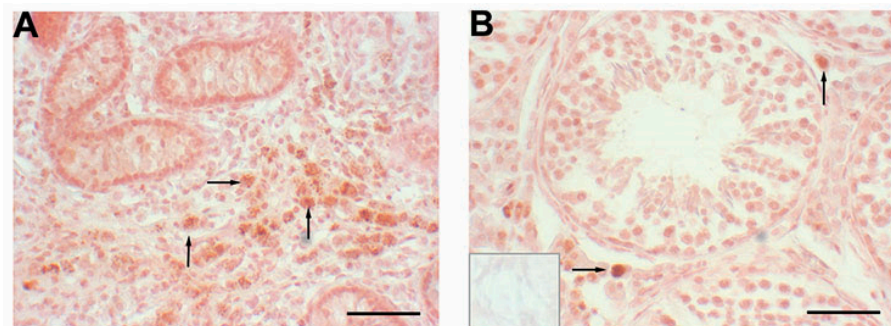


Figure 4. Localization of SRD5A2 protein in testes from a 6.5-week-old boar (**A**) or a 20-week-old boar (**B**). Arrows point to some of the labeled cells. Inset is a normal serum control and is similar to the serum control at 6.5 weeks of age. Scale bar is 50 μm .

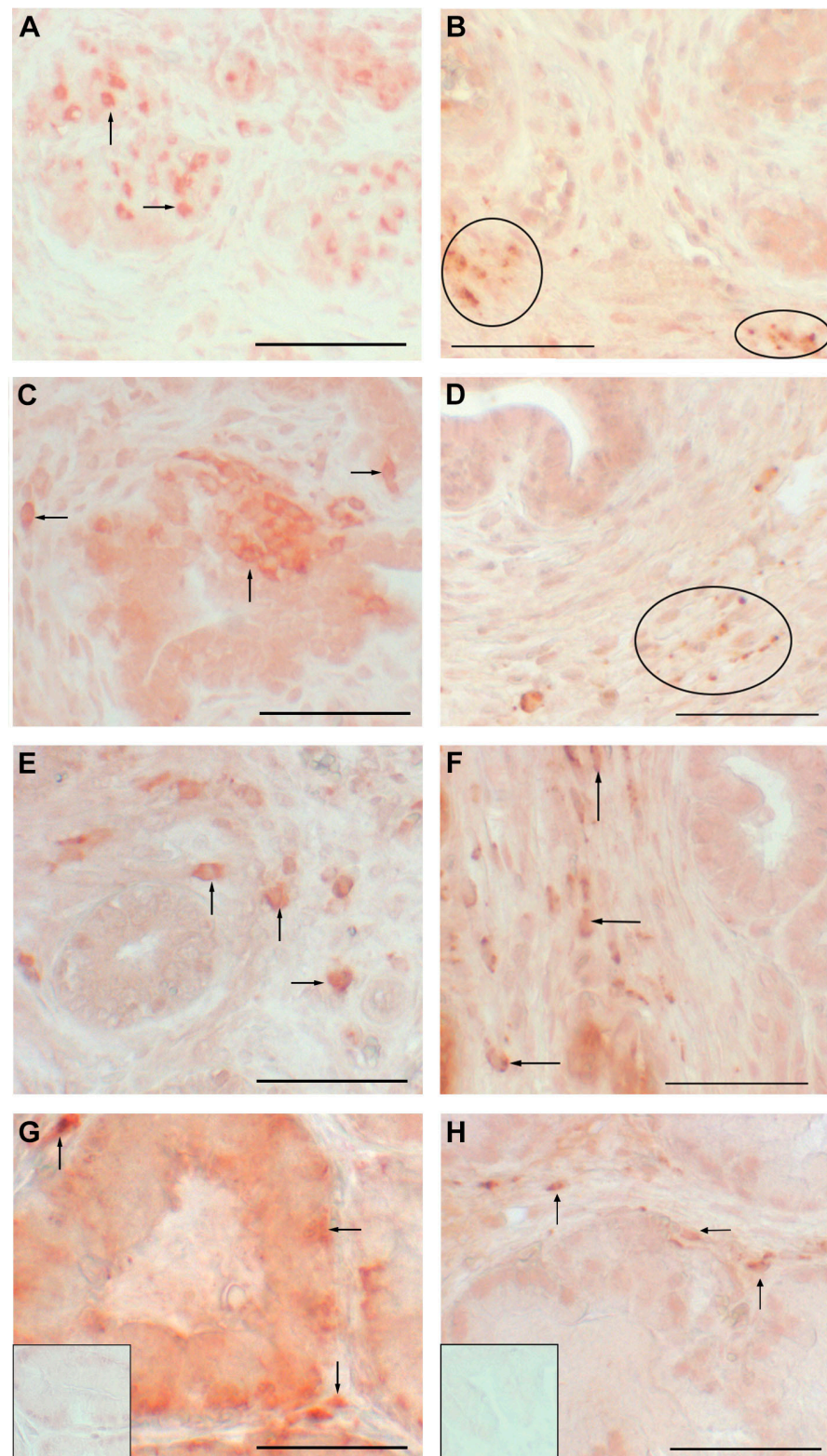


Figure 5. Immunohistochemical localization of leukocytes (A,C,E,G) and specifically macrophages (B,D,F,H) in the prostate during development. (A,B) are sections from prostates from 2-week-old boars; (C,D) are prostate sections from 6.5-week-old boars, (E,F) are sections from 11-week-old boars; (G) is a prostate section from a 40-week-old boar and (H) is a prostate section from a 16-week-old boar. Arrows point to individual cells and ovals surround clusters of immunolabeled macrophages. Insets are normal serum controls and similar to the serum controls at other ages. Scale bar is 50 μm.

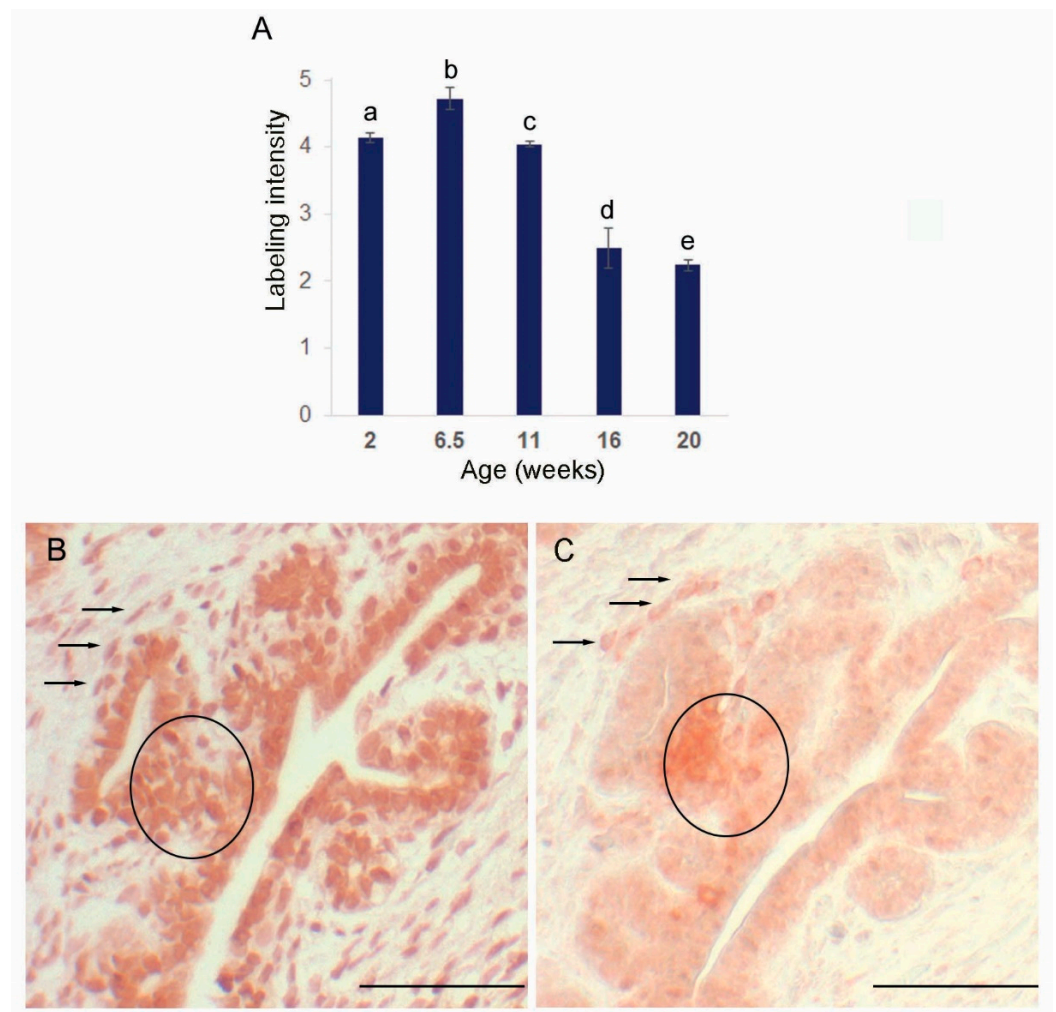


Figure 6. SRD5A2 protein in the porcine prostate. **(A)**. Relative intensity of protein labeling in the prostate epithelium. Values represent means and SEM. Columns labeled a,b or b,c differ, $p < 0.05$. Columns labeled a,e; c,d; or c,e differ, $p < 0.001$. **(B,C)**. Serial sections of prostate from a 6.5-week-old boar immunolabeled for SRD5A2 and for CD45, respectively. Circles and arrows point to a cluster of cells and individual cells, indicating that a minor portion of SRD5A2 expression colocalizes with leukocytes. Scale bar represents 50 μm .

3.3. Gene Expression during Normal Development of the Seminal Vesicles

Expression of *CSF1* mRNA in the seminal vesicles decreased postpubertally (20 vs. 40 weeks $p < 0.01$; Figure 1), was also low at the youngest age examined (2 weeks), and was generally low compared with the testis and prostate ($p < 0.001$). *AR* expression was relatively high in the seminal vesicles compared with the testis ($p < 0.001$) but variable, with a postpubertal decrease (11 vs. 40 weeks, $p < 0.05$). Expression of *SRD5A2* mRNA in the seminal vesicles was relatively low compared with the prostate ($p < 0.001$), but higher than in the testis ($p < 0.001$), and highest at the prepubertal and transitional time points (11 vs. 16 weeks and 6.5 vs. 40 weeks, $p < 0.05$ and $p < 0.01$, respectively), with a small increase at 20 weeks of age (20 vs. 40 weeks, $p < 0.05$).

3.4. SRD5A Expression in Other Tissues

Peripheral blood leukocytes demonstrated detectable but low expression of *SRD5A2* from 2 to 15 weeks of age compared with the prostate ($p < 0.05$), with no effect of age (ΔCt of 11.2 ± 0.3), although *AR* was not detected in these peripheral leukocytes during this interval. Leukocytes, including macrophages, may make a small contribution to overall *SRD5A2* expression, as partial co-localization of *SRD5A2* immunolabeling with the

macrophage marker CD68 was observed in serial sections at 6.5 weeks of age (Figure 6B,C). Co-localization can be observed along the tubular structure (branch elongation) or within the stroma (duct formation). Relatively high expression of *SRD5A1* was detectable in the corpus epididymis at 6.5 and 40 weeks of age (ΔCt of -1.03 ± 0.36), with reasonably consistent relative expression throughout the epididymis at 6.5 weeks of age (ΔCt of -1.88 and -1.47 in caput and cauda, respectively). However, detectable *SRD5A1* expression was not present in the testis, prostate, or seminal vesicles.

3.5. Gene Expression in the Testis following Reduced Estrogenic or Androgenic Signaling

Reduced endogenous estrogen signaling, by blocking nuclear estrogen receptors with fulvestrant or by inhibiting estrogen synthesis with the aromatase inhibitor letrozole, did not affect testicular *CSF1*, *AR* or *SRD5A2* mRNA expression at the juvenile time point (6.5 weeks of age; Figure 7). Similarly, reducing steroid signaling (estrogen or androgen) did not affect testicular expression of *CSF1*, *AR* or *SRD5A2* mRNA at the prepubertal transition (11 weeks of age).

3.6. Gene Expression in the Prostate following Reduced Estrogenic or Androgenic Signaling

Reduction in circulating estrogens (letrozole treatment) decreased *CSF1* mRNA in the neonatal prostate (2 weeks of age) compared with vehicle-treated boars ($p < 0.05$; Figure 7), but the response did not persist during continuously reduced endogenous estradiol nor in response to the estrogen receptor blockade through 6.5 weeks of age. An increase in prostate *CSF1* expression was observed at 6.5 weeks of age following continuous androgen receptor blockade with flutamide, but this response again did not persist past 11 weeks of age. Expression of prostate *AR* was generally nonresponsive to reduced estrogen or androgen signaling, although a small increase in *AR* expression was noted at 20 weeks of age ($p < 0.05$; Figure 7). Interference with steroid signaling did not affect prostate *SRD5A2* at any time point, although reduced estradiol tended to reduce *SRD5A2* expression at 2 weeks of age ($p = 0.08$).

3.7. Gene Expression in the Seminal Vesicles Following Reduced Estrogenic or Androgenic Signaling

Expression of seminal vesicle *CSF1* was altered by steroid signaling at 6.5 weeks of age. Blocking the androgen receptor with flutamide increased expression and blocking the estrogen receptor with fulvestrant reduced expression ($p < 0.05$; Figure 7). Reducing estradiol numerically reduced, but did not significantly alter, expression at 6.5 weeks of age. The *CSF1* response to reduced androgen signaling or estrogen receptor blockade did not persist past 11 weeks of age, although *CSF1* expression was reduced at 20 weeks of age following continuously reduced estradiol. Expression of *AR* in the seminal vesicles was generally unresponsive to alterations in steroid signaling, although reduced estrogen signaling (letrozole treatment) decreased *AR* mRNA compared with vehicle-treated littermates at 20 weeks of age ($p < 0.05$; Figure 7). Reduced steroid signaling had minimal effect on *SRD5A2* mRNA expression within the seminal vesicles, with higher expression detected at 6.5-weeks of age in boars treated with flutamide to block androgen receptor activation, compared with littermates treated with the vehicle ($p < 0.05$). However, this response was transient, as no effect was observed at 11 weeks of age.

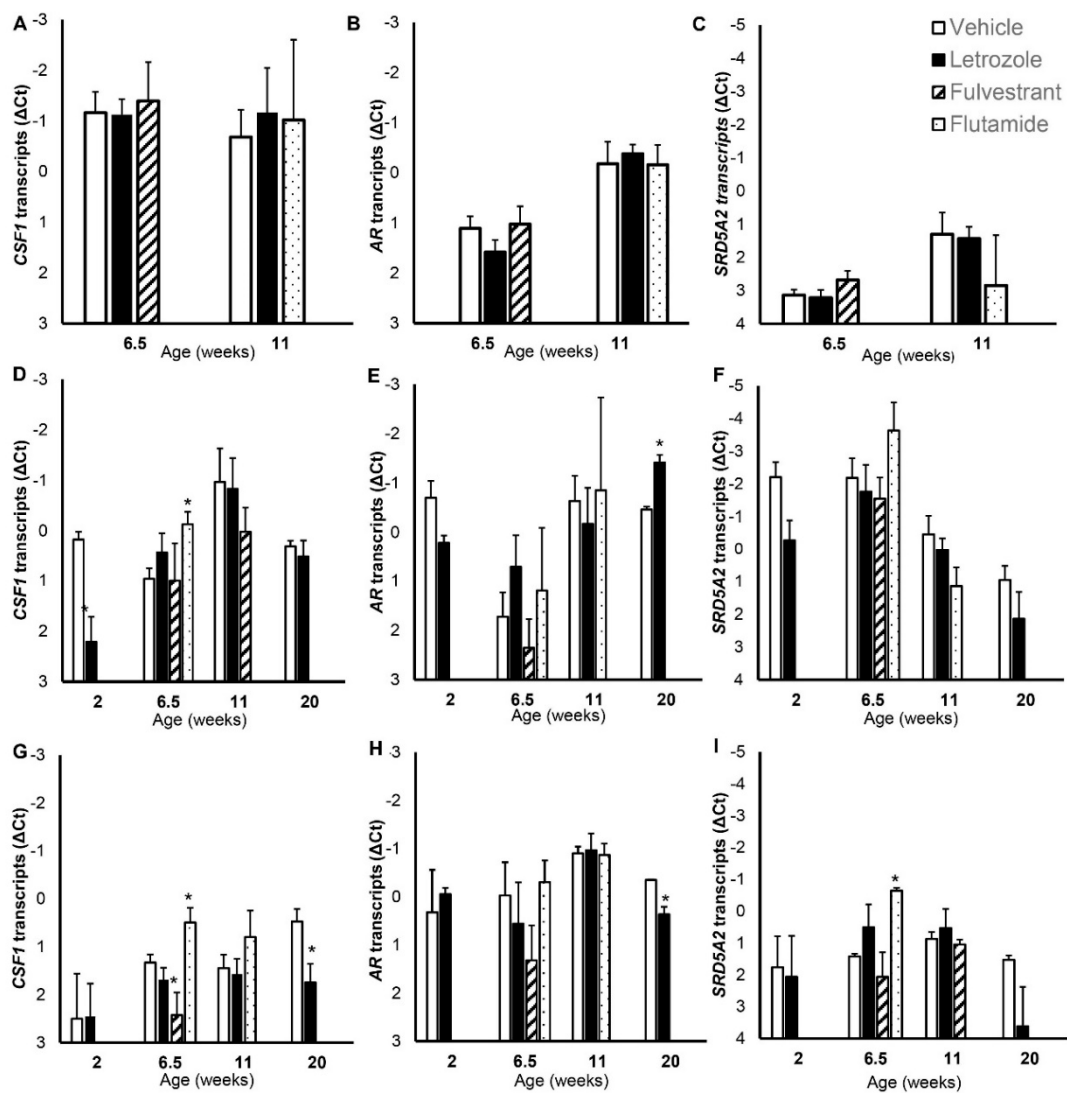


Figure 7. Effects of estrogen and androgen signaling on *CSF1*, *AR*, and *SRD5A2* gene expression in testes (A–C), prostate (D–F) and seminal vesicles (G–I). Values represent means and SEM. Estrogen signaling was reduced in littermates by inhibiting estradiol synthesis with letrozole or by blocking signaling via nuclear estrogen receptors with fulvestrant. Androgen signaling was blocked with flutamide. * indicates mean differs from vehicle-treated littermates, $p < 0.05$.

4. Discussion

Macrophages appear early in testis development and seem to be the major leukocyte in the current study, as well as in previous reports [54,55]. Macrophages interact with Leydig cells, influence testosterone production [56,57], and may support spermatogenesis (reviewed by [58]). In the current study, the three genes (*CSF1*, *AR*, and *SRD5A2*) were chosen for expression analysis based on their perceived role in the development of the male reproductive tract and potential interconnection.

Tissue *CSF1* is believed to attract macrophages, consequently stimulating growth and development in many organs [7–9]. Leydig cells, peritubular myoid cells and macrophages all produce *CSF1* within the testis [59,60]. Location of tissue resident macrophages correspond to these *CSF1* sources, with some macrophages being intimately associated with Leydig cells and other resident macrophages associated with the peritubular myoid cells surrounding the seminiferous tubules [54,55,61–63].

The relatively high expression of *CSF1* in the juvenile testis and decreasing expression with age observed in this study are consistent with the contributory role of *CSF1* in testicular

development and maturation, as established in other organ systems [64–68]. Expression of testicular *AR* is highest at the prepubertal transition point, a time when circulating testosterone is low; increased expression of *AR* might be a compensatory mechanism. Expression of *SRD5A2* is quite low in the testis, although the pattern of expression resembles that of *AR* and is obviously different from that of *CSF1*. However, the expression profile is consistent with the changes in testicular *SRD5A2* enzymatic activity with age; higher enzymatic activity was present at 6 weeks of age compared with pubertal boars [20]. This previous work also indicated *SRD5A* activity was present in the microsomal fraction and not the nuclear fraction, consistent with immunohistochemical localization of the *SRD5A* protein in the cytoplasm observed in the current study.

CSF1 expression in the prostate was highest at the transition point prior to allometric growth of the prostate. Expression of *CSF1* was perhaps important to stimulate the apparent influx of macrophages at this time point. In contrast to the tissue resident macrophages present in some other organs, the macrophages in the prostate of *CSF1*-deficient mice were not affected by increased circulating *CSF1* [31]. This suggests the need for local *CSF1* production in the prostate, as is known for a few other tissues. Continued expression of *CSF1* at all other time points in the prostate is consistent with this positive local role; however, the role of macrophages in prostate development is unclear. *AR* expression in the prostate is comparatively low at 6.5 weeks of age, at the same time point that circulating testosterone is quite low. At other time points, prostate expression of *AR* is substantial and relatively constant. In contrast to both *AR* and *CSF1* expression profiles, expression of *SRD5A2* in the prostate decreases relatively steadily during development. The *SRD5A2* protein was detected immunohistochemically in both the prostate stroma and epithelium, with protein expression appearing higher at the younger ages, which is similar to the higher gene expression during early development. The *SRD5A2* in the prostate is key to the local conversion of testosterone to DHT, a particularly potent androgen involved in the maintenance of prostate function. Local activity of the *SRD5A2* enzyme, coupled with local conversion of testosterone sulfate to testosterone [69–71], suggests local androgenic signaling independent of fluctuations in peripheral testosterone. The importance of *SRD5A2* to prostatic development in humans and laboratory rodents is demonstrated by the small and undeveloped prostates present when a mutation in the gene prevents expression of a functional enzyme [14,72]. Previous reports of *SRD5A2* expression in leukocytes [37,38] was confirmed for peripheral leukocytes from young boars. The idea that local leukocytes might contribute to *SRD5A2* synthesis in the prostate was demonstrated immunohistochemically; however, this contribution is minor based upon the low expression in leukocytes compared with prostate tissue. A second gene with 5 α reductase activity is *SRD5A1*, which is present in the human prostate [17,73,74]. We were unable to detect expression of *SRD5A1* mRNA in porcine prostates, although Palin and colleagues [22] hypothesized the presence of *SRD5A1* in the boar prostate based upon a second peak of enzymatic activity.

Expression of *CSF1* in porcine seminal vesicles was low in the neonate and the mature male compared with the testes and prostate and exhibited a unique expression profile compared with these tissues. Androgen receptor expression was high, with the highest expression at the prepubertal transition with the expression profile that was also unique in the seminal vesicles, compared with testes and prostate. Expression of *SRD5A2* in the seminal vesicles was generally lower than that observed in the prostate and with a less consistent pattern of expression during development. Although precise comparisons of small changes in relative gene expression among multiple organs by qRT-PCR would require uniform expression of the selected reference gene among those organs, the differences among organs observed in this study were large.

Overall, each organ displayed a unique expression pattern of these three genes during development. In addition, expression profiles for each of the three genes generally differed within an organ but this study did not evaluate expression profiles by cell type within an organ. Since all three organs exhibit allometric growth during approximately the same

ages, this variation among organs is surprising. Furthermore, since seminal vesicles and prostate are both accessory sex glands, the lack of similarity is even more surprising. Gene expression is not necessarily mirrored by subsequent protein expression, as additional regulators of translation exist; this regulation may explain some of the observed differences in gene expression.

Reduced steroid signaling had remarkably minimal effects on the expression of these three genes involved in development. No effects of reduced estrogen signaling were observed on the expression in the testes, although reduced estradiol leads to increased Sertoli cell numbers [25,45]. Reduced androgen signaling similarly had no effect on gene expression in the testes, as was the case with a treatment that affected Sertoli cell numbers [49]. This suggests that testicular expression of these genes is not regulated by estrogenic or androgenic signaling. Reduced estrogen or androgen signaling induced transient reductions in prostatic *CSF1* expression; neither of which persisted beyond a single time point. A small increase in prostatic *AR* expression was similarly detected at a single time point (20 weeks) following reduced testicular estradiol synthesis and lowered circulating estradiol. Although *SRD5A2* is particularly associated with the prostate, with gene expression being relatively high, neither reduced estrogenic nor reduced androgenic signaling affected prostate *SRD5A2* expression. This was surprising and suggests that expression is robust. Thus, the relatively steady decrease in prostate *SRD5A2* expression during development is apparently not regulated by estrogenic or androgenic signaling. Expression of each of these developmental genes in the seminal vesicles was transiently affected by one or more reductions in steroid signaling. However, the data are again more consistent with minor and transient responses to altered steroid signaling, with alterations in such steroid signaling being neutralized with time rather than persisting. The inconsistency between reduced estrogen signaling from reduced estradiol synthesis and from blocking nuclear estrogen receptors also contributes to the perception that steroid regulation of these genes in the seminal vesicles is limited. The current observations of the minimal effects of sex steroid signaling on gene expression during development differ from the anticipated effects of androgen signaling on accessory sex glands. Reductions in androgen signaling increased *AR* expression in adult rat prostate and seminal vesicles [75,76] in contrast to these observations in juvenile pigs, although no effect on testis *AR* was noted in rats, which is similar to the current observations. This is a surprising result and might be due to the differences in the method used to reduce AR signaling, to differences in the juvenile and adult animals, or to species differences. Expression of these perceived pivotal genes were anticipated to change following reduced estrogen signaling, since estrogens were demonstrated to maintain accessory sex glands in adult males following castration [23].

5. Conclusions

Although testes, prostate, and seminal vesicles all undergo hypoallometric growth or isometric growth followed by positive allometric growth during development, the expression profiles of *CSF1*, *AR*, and *SRD5A2* are generally unique in each organ. The prostate has relatively high expression of *SRD5A2* prepubertally, which decreases with age, while the testis and seminal vesicles have low expression prepubertally. In the testis, *AR* and *CSF1* mRNA are positively correlated, suggesting that AR may be involved with the recruitment, maintenance, or proliferation of macrophages during testicular development. Furthermore, estrogenic and androgenic regulation appear to be relatively minor contributors to the regulation of these three developmental genes.

Author Contributions: Conceptualization, K.K. and T.B.; Methodology, K.K. and T.B.; Validation, K.K., E.L. and T.B.; Formal Analysis, K.K. and T.B.; Investigation, K.K., E.L. and T.B.; Resources, T.B.; Writing—Original Draft Preparation, K.K.; Writing—Review and Editing, K.K., E.L. and T.B.; Visualization, K.K. and T.B.; Supervision, T.B.; Project Administration, T.B.; Funding Acquisition, T.B. All authors have read and agreed to the published version of the manuscript.

Funding: This research was funded by the National Research Initiative Competitive Grant 2008-35203-19082 from USDA National Institute of Food and Agriculture, a W.K. Kellogg Endowment, USDA NIFA Multistate Research Project W2171 and W4171, Jastro Shields research awards, Rosenberg graduate assistantship, and Brownell and Lyons fellowships.

Institutional Review Board Statement: All animal use was in accord with the Guide for the Use and Care of Agricultural Animals in Research and received prior approval from the UC Davis Institutional Animal Care and Use Committee (#12958, 7/26/2007; #13398, 5/29/2008; #16308, 1/26/2011; #17879, 1/9/2014; #19017, 12/3/2015; #20100, 9/17/2017; #20841, 1/10/2019).

Data Availability Statement: Data are contained within the article.

Acknowledgments: We gratefully acknowledge the infrastructure support of the Department of Animal Science, College of Agricultural and Environmental Sciences, and the California Agricultural Experiment Station of the University of California-Davis.

Conflicts of Interest: The authors declare no conflict of interest. The funders had no role in the design of the study; in the collection, analyses, or interpretation of data; in the writing of the manuscript, or in the decision to publish the results.

References

1. Allrich, R.D.; Christenson, R.K.; Ford, J.J.; Zimmerman, D.R. Pubertal development of the boar: Testosterone, estradiol-17 beta, cortisol and LH concentrations before and after castration at various ages. *J. Anim. Sci.* **1982**, *55*, 1139–1146. [\[CrossRef\]](#)
2. Ford, J.J. Serum estrogen concentrations during postnatal development in male pigs. *Proc. Soc. Exp. Biol. Med.* **1983**, *174*, 160–164. [\[CrossRef\]](#)
3. Colenbrander, B.; de Jong, F.H.; Wensing, C.J. Changes in serum testosterone concentrations in the male pig during development. *J. Reprod. Fertil.* **1978**, *53*, 377–380. [\[CrossRef\]](#)
4. Colenbrander, B.; Kruip, T.A.; Dieleman, S.J.; Wensing, C.J. Changes in serum LH concentrations during normal and abnormal sexual development in the pig. *Biol. Reprod.* **1977**, *17*, 506–513. [\[CrossRef\]](#)
5. Schwarzenberger, F.; Toole, G.S.; Christie, H.L.; Raeside, J.I. Plasma levels of several androgens and estrogens from birth to puberty in male domestic pigs. *Acta Endocrinol.* **1993**, *128*, 173–177. [\[CrossRef\]](#)
6. At-Taras, E.E.; Conley, A.J.; Berger, T.; Roser, J.F. Reducing estrogen synthesis does not affect gonadotropin secretion in the developing boar. *Biol. Reprod.* **2006**, *74*, 58–66. [\[CrossRef\]](#)
7. Jones, C.V.; Ricardo, S.D. Macrophages and CSF-1: Implications for development and beyond. *Organogenesis* **2013**, *9*, 249–260. [\[CrossRef\]](#)
8. Stefater, J.A., 3rd; Ren, S.; Lang, R.A.; Duffield, J.S. Metchnikoff's policemen: Macrophages in development, homeostasis and regeneration. *Trends Mol. Med.* **2011**, *17*, 743–752. [\[CrossRef\]](#)
9. De, M.; Wood, G.W. Influence of oestrogen and progesterone on macrophage distribution in the mouse uterus. *J. Endocrinol.* **1990**, *126*, 417–424. [\[CrossRef\]](#)
10. Dama, A.; Baggio, C.; Boscaro, C.; Albiero, M.; Cignarella, A. Estrogen Receptor Functions and Pathways at the Vascular Immune Interface. *Int. J. Mol. Sci.* **2021**, *22*, 4254. [\[CrossRef\]](#)
11. Becerra-Diaz, M.; Song, M.; Heller, N. Androgen and Androgen Receptors as Regulators of Monocyte and Macrophage Biology in the Healthy and Diseased Lung. *Front. Immunol.* **2020**, *11*, 1698. [\[CrossRef\]](#)
12. Saunders, F.J. Some Aspects of Relation of Structure of Steroids to Their Prostate-Stimulating Effects. *Natl. Cancer Inst. Monogr.* **1963**, *12*, 139–159.
13. Saartok, T.; Dahlberg, E.; Gustafsson, J.A. Relative binding affinity of anabolic-androgenic steroids: Comparison of the binding to the androgen receptors in skeletal muscle and in prostate, as well as to sex hormone-binding globulin. *Endocrinology* **1984**, *114*, 2100–2106. [\[CrossRef\]](#)
14. Wilson, J.D. Role of dihydrotestosterone in androgen action. *Prostate Suppl.* **1996**, *6*, 88–92. [\[CrossRef\]](#)
15. Booth, W.D. In-vitro metabolism of unconjugated androgens, oestrogens and the sulphate conjugates of androgens and oestrone by accessory sex organs of the mature domestic boar. *J. Endocrinol.* **1983**, *96*, 457–464. [\[CrossRef\]](#)
16. Raeside, J.I.; Christie, H.L.; Renaud, R.L. Androgen and estrogen metabolism in the reproductive tract and accessory sex glands of the domestic boar (*Sus scrofa*). *Biol. Reprod.* **1999**, *61*, 1242–1248. [\[CrossRef\]](#)
17. Thigpen, A.E.; Silver, R.I.; Guileyardo, J.M.; Casey, M.L.; McConnell, J.D.; Russell, D.W. Tissue distribution and ontogeny of steroid 5 alpha-reductase isozyme expression. *J. Clin. Investig.* **1993**, *92*, 903–910. [\[CrossRef\]](#)
18. Eicheler, W.; Dreher, M.; Hoffmann, R.; Happle, R.; Aumuller, G. Immunohistochemical evidence for differential distribution of 5 alpha-reductase isoenzymes in human skin. *Br. J. Dermatol.* **1995**, *133*, 371–376. [\[CrossRef\]](#)
19. Eicheler, W.; Tuohimaa, P.; Vilja, P.; Adermann, K.; Forssmann, W.G.; Aumuller, G. Immunocytochemical localization of human 5 alpha-reductase 2 with polyclonal antibodies in androgen target and non-target human tissues. *J. Histochem. Cytochem.* **1994**, *42*, 667–675. [\[CrossRef\]](#)

20. Watkins, W.J.; Goldring, C.E.; Gower, D.B. Properties of 4-ene-5 alpha-reductase and studies on its solubilization from porcine testicular microsomes. *J. Steroid Biochem.* **1988**, *29*, 325–331. [[CrossRef](#)]
21. Gorowska, E.; Zarzycka, M.; Chojnacka, K.; Bilinska, B.; Hejmej, A. Postnatal exposure to flutamide affects CDH1 and CTNNB1 gene expression in adult pig epididymis and prostate and alters metabolism of testosterone. *Andrology* **2014**, *2*, 186–197. [[CrossRef](#)]
22. Palin, M.F.; Faguy, M.; LeHoux, J.G.; Pelletier, G. Inhibitory effects of Serenoa repens on the kinetic of pig prostatic microsomal 5alpha-reductase activity. *Endocrine* **1998**, *9*, 65–69. [[CrossRef](#)]
23. Joshi, H.S.; Raeside, J.I. Synergistic effects of testosterone and oestrogens on accessory sex glands and sexual behaviour of the boar. *J. Reprod. Fertil.* **1973**, *33*, 411–423. [[CrossRef](#)]
24. Carreau, S.; Hess, R.A. Oestrogens and spermatogenesis. *Philos. Trans. R Soc. Lond. B Biol. Sci.* **2010**, *365*, 1517–1535. [[CrossRef](#)]
25. At-Taras, E.E.; Berger, T.; McCarthy, M.J.; Conley, A.J.; Nitta-Oda, B.J.; Roser, J.F. Reducing estrogen synthesis in developing boars increases testis size and total sperm production. *J. Androl.* **2006**, *27*, 552–559. [[CrossRef](#)]
26. Berger, T.; McCarthy, M.; Pearl, C.A.; At-Taras, E.; Roser, J.F.; Conley, A. Reducing endogenous estrogens during the neonatal and juvenile periods affects reproductive tract development and sperm production in postpubertal boars. *Anim. Reprod. Sci.* **2008**, *109*, 218–235. [[CrossRef](#)]
27. Pollard, J.W.; Lin, E.Y.; Zhu, L. Complexity in uterine macrophage responses to cytokines in mice. *Biol. Reprod.* **1998**, *58*, 1469–1475. [[CrossRef](#)]
28. Pepe, G.; Locati, M.; Della Torre, S.; Mornata, F.; Cignarella, A.; Maggi, A.; Vegeto, E. The estrogen-macrophage interplay in the homeostasis of the female reproductive tract. *Hum. Reprod. Update* **2018**, *24*, 652–672. [[CrossRef](#)]
29. Pollanen, P.; Maddocks, S. Macrophages, lymphocytes and MHC II antigen in the ram and the rat testis. *J. Reprod. Fertil.* **1988**, *82*, 437–445. [[CrossRef](#)]
30. Mullen, T.E., Jr.; Kiessling, R.L.; Kiessling, A.A. Tissue-specific populations of leukocytes in semen-producing organs of the normal, hemicastrated, and vasectomized mouse. *AIDS Res. Hum. Retroviruses* **2003**, *19*, 235–243. [[CrossRef](#)]
31. Pollard, J.W.; Dominguez, M.G.; Mocci, S.; Cohen, P.E.; Stanley, E.R. Effect of the colony-stimulating factor-1 null mutation, osteopetrotic (csfm(op)), on the distribution of macrophages in the male mouse reproductive tract. *Biol. Reprod.* **1997**, *56*, 1290–1300. [[CrossRef](#)] [[PubMed](#)]
32. Theyer, G.; Kramer, G.; Assmann, I.; Sherwood, E.; Preinfalk, W.; Marberger, M.; Zechner, O.; Steiner, G.E. Phenotypic characterization of infiltrating leukocytes in benign prostatic hyperplasia. *Lab. Invest.* **1992**, *66*, 96–107.
33. Wang, M.; Yang, Y.; Cansever, D.; Wang, Y.; Kantores, C.; Messiaen, S.; Moison, D.; Livera, G.; Chakarov, S.; Weinberger, T.; et al. Two populations of self-maintaining monocyte-independent macrophages exist in adult epididymis and testis. *Proc. Natl. Acad. Sci. USA* **2021**, *118*, e2013686117. [[CrossRef](#)] [[PubMed](#)]
34. Padilla, L.; Martinez-Hernandez, J.; Barranco, I.; Lucas, X.; Pastor, L.M.; Rodriguez-Martinez, H.; Roca, J.; Parrilla, I. Granulocyte-macrophage colony stimulating factor (GM-CSF) is fully expressed in the genital tract, seminal plasma and spermatozoa of male pigs. *Sci. Rep.* **2020**, *10*, 13360. [[CrossRef](#)] [[PubMed](#)]
35. Yee, J.B.; Hutson, J.C. Effects of testicular macrophage-conditioned medium on Leydig cells in culture. *Endocrinology* **1985**, *116*, 2682–2684. [[CrossRef](#)]
36. Hales, D.B. Testicular macrophage modulation of Leydig cell steroidogenesis. *J. Reprod. Immunol.* **2002**, *57*, 3–18. [[CrossRef](#)]
37. Raith, L.; Karl, H.J. Enzymes of androgen metabolism in human leucocytes. *Acta Endocrinol. Suppl.* **1973**, *173*, 137. [[CrossRef](#)]
38. Clair, P.; Patricot, M.C.; Mathian, B.; Revol, A. Androgen metabolism in vitro by human leukocytes, variations with sex and age. *J. Steroid Biochem.* **1984**, *20*, 377–381. [[CrossRef](#)]
39. Araneo, B.A.; Dowell, T.; Diegel, M.; Daynes, R.A. Dihydrotestosterone exerts a depressive influence on the production of interleukin-4 (IL-4), IL-5, and gamma-interferon, but not IL-2 by activated murine T cells. *Blood* **1991**, *78*, 688–699. [[CrossRef](#)]
40. Fang, L.Y.; Izumi, K.; Lai, K.P.; Liang, L.; Li, L.; Miyamoto, H.; Lin, W.J.; Chang, C. Infiltrating macrophages promote prostate tumorigenesis via modulating androgen receptor-mediated CCL4-STAT3 signaling. *Cancer Res.* **2013**, *73*, 5633–5646. [[CrossRef](#)]
41. Wang, X.; Lin, W.J.; Izumi, K.; Jiang, Q.; Lai, K.P.; Xu, D.; Fang, L.Y.; Lu, T.; Li, L.; Xia, S.; et al. Increased infiltrated macrophages in benign prostatic hyperplasia (BPH): Role of stromal androgen receptor in macrophage-induced prostate stromal cell proliferation. *J. Biol. Chem.* **2012**, *287*, 18376–18385. [[CrossRef](#)] [[PubMed](#)]
42. Summerfield, A. Special issue on porcine immunology: An introduction from the guest editor. *Dev. Comp. Immunol.* **2009**, *33*, 265–266. [[CrossRef](#)] [[PubMed](#)]
43. Raeside, J.I. The formation of unconjugated and sulfoconjugated estrogens by Leydig cells of the boar testis. *Can. J. Biochem. Cell Biol.* **1983**, *61*, 790–795. [[CrossRef](#)] [[PubMed](#)]
44. Raeside, J.I.; Renaud, R.L. Estrogen and androgen production by purified Leydig cells of mature boars. *Biol. Reprod.* **1983**, *28*, 727–733. [[CrossRef](#)] [[PubMed](#)]
45. Berger, T.; Conley, A.J.; Van Klompenberg, M.; Roser, J.F.; Hovey, R.C. Increased testicular Sertoli cell population induced by an estrogen receptor antagonist. *Mol. Cell Endocrinol.* **2013**, *366*, 53–58. [[CrossRef](#)]
46. Bassols, A.; Costa, C.; Eckersall, P.D.; Osada, J.; Sabria, J.; Tibau, J. The pig as an animal model for human pathologies: A proteomics perspective. *Proteom. Clin. Appl.* **2014**, *8*, 715–731. [[CrossRef](#)]
47. Walters, E.M.; Prather, R.S. Advancing swine models for human health and diseases. *Mo. Med.* **2013**, *110*, 212–215.
48. Lunney, J.K. Advances in swine biomedical model genomics. *Int. J. Biol. Sci.* **2007**, *3*, 179–184. [[CrossRef](#)]

49. Legacki, E.; Conley, A.J.; Nitta-Oda, B.J.; Berger, T. Porcine sertoli cell proliferation after androgen receptor inactivation. *Biol. Reprod.* **2015**, *92*, 93. [[CrossRef](#)]
50. Berger, T.; Tang, S.; Tu, L.; Soto, D.A.; Conley, A.J.; Nitta-Oda, B. Changes in testicular gene expression following reduced estradiol synthesis: A complex pathway to increased porcine Sertoli cell proliferation. *Mol. Cell Endocrinol.* **2021**, *523*, 111099. [[CrossRef](#)]
51. Winnall, W.R.; Muir, J.A.; Hedger, M.P. Differential responses of epithelial Sertoli cells of the rat testis to Toll-like receptor 2 and 4 ligands: Implications for studies of testicular inflammation using bacterial lipopolysaccharides. *Innate Immun.* **2011**, *17*, 123–136. [[CrossRef](#)] [[PubMed](#)]
52. Human Protein Atlas. Available online: <https://www.proteinatlas.org> (accessed on 1 August 2022).
53. Lyck Hansen, M.; Beck, H.C.; Irmukhamedov, A.; Jensen, P.S.; Olsen, M.H.; Rasmussen, L.M. Proteome analysis of human arterial tissue discloses associations between the vascular content of small leucine-rich repeat proteoglycans and pulse wave velocity. *Arterioscler. Thromb. Vasc. Biol.* **2015**, *35*, 1896–1903. [[CrossRef](#)] [[PubMed](#)]
54. Niemi, M.; Sharpe, R.M.; Brown, W.R. Macrophages in the interstitial tissue of the rat testis. *Cell Tissue Res.* **1986**, *243*, 337–344. [[CrossRef](#)] [[PubMed](#)]
55. Hume, D.A.; Halpin, D.; Charlton, H.; Gordon, S. The mononuclear phagocyte system of the mouse defined by immunohistochemical localization of antigen F4/80: Macrophages of endocrine organs. *Proc. Natl. Acad. Sci. USA* **1984**, *81*, 4174–4177. [[CrossRef](#)] [[PubMed](#)]
56. Sun, X.R.; Hedger, M.P.; Risbridger, G.P. The effect of testicular macrophages and interleukin-1 on testosterone production by purified adult rat Leydig cells cultured under in vitro maintenance conditions. *Endocrinology* **1993**, *132*, 186–192. [[CrossRef](#)]
57. Hutson, J.C. Physiologic interactions between macrophages and Leydig cells. *Exp. Biol. Med.* **2006**, *231*, 1–7. [[CrossRef](#)]
58. Potter, S.J.; DeFalco, T. Role of the testis interstitial compartment in spermatogonial stem cell function. *Reproduction* **2017**, *153*, R151–R162. [[CrossRef](#)]
59. DeFalco, T.; Potter, S.J.; Williams, A.V.; Waller, B.; Kan, M.J.; Capel, B. Macrophages Contribute to the Spermatogonial Niche in the Adult Testis. *Cell. Rep.* **2015**, *12*, 1107–1119. [[CrossRef](#)]
60. Oatley, J.M.; Oatley, M.J.; Avarbock, M.R.; Tobias, J.W.; Brinster, R.L. Colony stimulating factor 1 is an extrinsic stimulator of mouse spermatogonial stem cell self-renewal. *Development* **2009**, *136*, 1191–1199. [[CrossRef](#)]
61. Bergh, A.; Damber, J.E.; van Rooijen, N. Liposome-mediated macrophage depletion: An experimental approach to study the role of testicular macrophages in the rat. *J. Endocrinol.* **1993**, *136*, 407–413. [[CrossRef](#)]
62. Hutson, J.C. Development of cytoplasmic digitations between Leydig cells and testicular macrophages of the rat. *Cell Tissue Res.* **1992**, *267*, 385–389. [[CrossRef](#)] [[PubMed](#)]
63. Mossadegh-Keller, N.; Gentek, R.; Gimenez, G.; Bigot, S.; Mailfert, S.; Sieweke, M.H. Developmental origin and maintenance of distinct testicular macrophage populations. *J. Exp. Med.* **2017**, *214*, 2829–2841. [[CrossRef](#)] [[PubMed](#)]
64. Gomez Perdiguerro, E.; Schulz, C.; Geissmann, F. Development and homeostasis of “resident” myeloid cells: The case of the microglia. *Glia* **2013**, *61*, 112–120. [[CrossRef](#)]
65. Cecchini, M.G.; Hofstetter, W.; Halasy, J.; Wetterwald, A.; Felix, R. Role of CSF-1 in bone and bone marrow development. *Mol. Reprod. Dev.* **1997**, *46*, 75–83. [[CrossRef](#)]
66. Cecchini, M.G.; Dominguez, M.G.; Mocchi, S.; Wetterwald, A.; Felix, R.; Fleisch, H.; Chisholm, O.; Hofstetter, W.; Pollard, J.W.; Stanley, E.R. Role of colony stimulating factor-1 in the establishment and regulation of tissue macrophages during postnatal development of the mouse. *Development* **1994**, *120*, 1357–1372. [[CrossRef](#)]
67. Sasmono, R.T.; Williams, E. Generation and characterization of MacGreen mice, the Cfs1r-EGFP transgenic mice. *Methods Mol. Biol.* **2012**, *844*, 157–176. [[CrossRef](#)]
68. Gow, D.J.; Sester, D.P.; Hume, D.A. CSF-1, IGF-1, and the control of postnatal growth and development. *J. Leukoc. Biol.* **2010**, *88*, 475–481. [[CrossRef](#)]
69. Schuler, G. Steroid sulfates in domestic mammals and laboratory rodents. *Domest. Anim. Endocrinol.* **2021**, *76*, 106622. [[CrossRef](#)]
70. Schuler, G.; Dezhkam, Y.; Tenbusch, L.; Klymiuk, M.C.; Zimmer, B.; Hoffmann, B. Sulfation pathways: Formation and hydrolysis of sulfonated estrogens in the porcine testis and epididymis. *J. Mol. Endocrinol.* **2018**, *61*, M13–M25. [[CrossRef](#)]
71. Kucera, H.; Puschner, B.; Conley, A.; Berger, T. Tissue steroid levels in response to reduced testicular estrogen synthesis in the male pig, *Sus scrofa*. *PLoS ONE* **2019**, *14*, e0215390. [[CrossRef](#)]
72. Mahendroo, M.S.; Cala, K.M.; Hess, D.L.; Russell, D.W. Unexpected virilization in male mice lacking steroid 5 alpha-reductase enzymes. *Endocrinology* **2001**, *142*, 4652–4662. [[CrossRef](#)] [[PubMed](#)]
73. Titus, M.A.; Gregory, C.W.; Ford, O.H., 3rd; Schell, M.J.; Maygarden, S.J.; Mohler, J.L. Steroid 5alpha-reductase isozymes I and II in recurrent prostate cancer. *Clin. Cancer Res.* **2005**, *11*, 4365–4371. [[CrossRef](#)] [[PubMed](#)]
74. Levine, A.C.; Wang, J.P.; Ren, M.; Eliashvili, E.; Russell, D.W.; Kirschenbaum, A. Immunohistochemical localization of steroid 5 alpha-reductase 2 in the human male fetal reproductive tract and adult prostate. *J. Clin. Endocrinol. Metab.* **1996**, *81*, 384–389. [[CrossRef](#)] [[PubMed](#)]
75. Shan, L.X.; Rodriguez, M.C.; Janne, O.A. Regulation of androgen receptor protein and mRNA concentrations by androgens in rat ventral prostate and seminal vesicles and in human hepatoma cells. *Mol. Endocrinol.* **1990**, *4*, 1636–1646. [[CrossRef](#)]
76. Quarmby, V.E.; Yarbrough, W.G.; Lubahn, D.B.; French, F.S.; Wilson, E.M. Autologous down-regulation of androgen receptor messenger ribonucleic acid. *Mol. Endocrinol.* **1990**, *4*, 22–28. [[CrossRef](#)]