

Lawrence Berkeley National Laboratory

Joint Genome Institute

Title

Insights into the Lignocellulose-Degrading Enzyme System of *Hemicola grisea* var. *thermoidea* Based on Genome and Transcriptome Analysis

Permalink

<https://escholarship.org/uc/item/4971m3m9>

Journal

Microbiology Spectrum, 9(2)

ISSN

2165-0497

Authors

Steindorff, Andrei Stecca
Serra, Luana Assis
Formighieri, Eduardo Fernandes
et al.

Publication Date

2021-10-31

DOI

10.1128/spectrum.01088-21

Peer reviewed



Insights into the Lignocellulose-Degrading Enzyme System of *Humicola grisea* var. *thermoidea* Based on Genome and Transcriptome Analysis

Andrei Stecca Steindorff,^{a,*} Luana Assis Serra,^{a,d} Eduardo Fernandes Formighieri,^a Fabrícia Paula de Faria,^b Marcio José Poças-Fonseca,^c João Ricardo Moreira de Almeida^{a,d}

^aLaboratory of Genetics and Biotechnology, EMBRAPA Agroenergy, Brasília, Brazil

^bDepartment of Biochemistry and Molecular Biology, Federal University of Goiás, Goiânia, Goiás, Brazil

^cDepartment of Cellular Biology, University of Brasília, Brasília, Brazil

^dGraduate Program of Microbial Biology, Department of Cell Biology, Institute of Biology, University of Brasília, Brasília, Brazil

Andrei Stecca Steindorff and Luana Assis Serra contributed equally to this article. Author order was determined both alphabetically and in order of increasing seniority.

ABSTRACT *Humicola grisea* var. *thermoidea* is a thermophilic ascomycete and important enzyme producer that has an efficient enzymatic system with a broad spectrum of thermostable carbohydrate-active (CAZy) enzymes. These enzymes can be employed in lignocellulose biomass deconstruction and other industrial applications. In this work, the genome of *H. grisea* var. *thermoidea* was sequenced. The acquired sequence reads were assembled into a total length of 28.75 Mbp. Genome features correlate with what was expected for thermophilic Sordariomycetes. The transcriptomic data showed that sugarcane bagasse significantly upregulated genes related to primary metabolism and polysaccharide deconstruction, especially hydrolases, at both pH 5 and pH 8. However, a number of exclusive and shared genes between the pH values were found, especially at pH 8. *H. grisea* expresses an average of 211 CAZy enzymes (CAZymes), which are capable of acting in different substrates. The top upregulated genes at both pH values represent CAZyme-encoding genes from different classes, including acetylxylan esterase, endo-1,4- β -mannosidase, exoglucanase, and endoglucanase genes. For the first time, the arsenal that the thermophilic fungus *H. grisea* var. *thermoidea* possesses to degrade the lignocellulosic biomass is shown. Carbon source and pH are of pivotal importance in regulating gene expression in this organism, and alkaline pH is a key regulatory factor for sugarcane bagasse hydrolysis. This work paves the way for the genetic manipulation and robust biotechnological applications of this fungus.

IMPORTANCE Most studies regarding the use of fungi as enzyme producers for biomass deconstruction have focused on mesophile species, whereas the potential of thermophiles has been evaluated less. This study revealed, through genome and transcriptome analyses, the genetic repertoire of the biotechnological relevant thermophile fungus *Humicola grisea*. Comparative genomics helped us to further understand the biology and biotechnological potential of *H. grisea*. The results demonstrate that this fungus possesses an arsenal of carbohydrate-active (CAZy) enzymes to degrade the lignocellulosic biomass. Indeed, it expresses more than 200 genes encoding CAZy enzymes when cultivated in sugarcane bagasse. Carbon source and pH are key factors for regulating the gene expression in this organism. This work shows, for the first time, the great potential of *H. grisea* as an enzyme producer and a gene donor for biotechnological applications and provides the base for the genetic manipulation and robust biotechnological applications of this fungus.

KEYWORDS *Humicola grisea*, genome sequencing, transcriptome, sugarcane bagasse, pH regulation, CAZy enzymes

Citation Steindorff AS, Serra LA, Formighieri EF, de Faria FP, Poças-Fonseca MJ, de Almeida JRM. 2021. Insights into the lignocellulose-degrading enzyme system of *Humicola grisea* var. *thermoidea* based on genome and transcriptome analysis. *Microbiol Spectr* 9:e01088-21. <https://doi.org/10.1128/Spectrum.01088-21>.

Editor Jeffrey A. Gralnick, University of Minnesota

Copyright © 2021 Steindorff et al. This is an open-access article distributed under the terms of the [Creative Commons Attribution 4.0 International license](https://creativecommons.org/licenses/by/4.0/).

Address correspondence to João Ricardo Moreira de Almeida, joao.almeida@embrapa.br.

* Present address: Andrei Stecca Steindorff, U.S. Department of Energy Joint Genome Institute, Lawrence Berkeley National Laboratory, Berkeley, California, USA.

Received 29 July 2021

Accepted 2 August 2021

Published 15 September 2021

The microbial production of a variety of fuels and chemicals from the lignocellulose biomass sugars has been evaluated extensively as an alternative to fossil fuels (1–3). In this conversion process, the fermentable sugars need to be released from cellulose and hemicellulose present in the biomass cell wall by pretreatment and hydrolysis (4). In the enzymatic hydrolysis, lignocellulolytic enzymes from filamentous fungi have received great attention, as these microorganisms are highly efficient in biomass hydrolysis for the production capacity of both specific enzymes and enzymatic cocktails (5).

A few industrially relevant fungi species have been well characterized in terms of genetics and physiology, especially mesophilic species, such as *Trichoderma* spp., *Penicillium* spp., *Aspergillus* spp., *Neurospora* spp., *Phanerochaete* spp., and *Trametes* spp. (6). A great extent of thermophilic filamentous fungi (more than 50 species) is capable of producing enzymes that act synergistically for the degradation of lignocellulosic biomass; however, relatively few studies aiming to characterize and unveil their enzymatic potential have been reported so far (6). Enzymes from thermophilic fungi, like *Humicola grisea*, *Thielavia terrestris*, *Myceliophthora thermophila*, and *Malbranchea cinnamomea*, are of interest because they tend to be more thermostable than enzymes from mesophilic fungi (7–10).

Several carbohydrate-active (CAZy) enzymes, i.e., enzymes that can degrade, modify, or create glycosidic bonds (11), from thermophilic microorganisms have been identified, purified, and characterized in recent years. Genomic studies have allowed the prospection of a diversity of enzymes used to deconstruct the plant cell wall in *T. terrestris*, *M. thermophila*, and *M. cinnamomea* (12, 13). Furthermore, transcriptome and secretome analyses demonstrated the differential regulation and secretion of CAZymes produced by the different species, which will vary according to the substrate employed (14, 15).

In general, biomass deconstruction requires the expression of different classes of putative CAZymes. The expression of glycoside hydrolases, including cellulases, hemicellulases, pectinases, and others, is broadly regulated by the carbon source (14). For instance, *M. thermophila* is capable of secreting 95 glycoside hydrolases (GH), but the production of each protein depends on the carbon source employed in the cultivation (15). Also, the CAZymes expression can be influenced by the medium pH that is closely regulated by the PacC transcription factor. Several studies have demonstrated that PacC modulates lignocellulolytic enzyme production in species such as *Aspergillus nidulans*, *Trichoderma reesei*, and *H. grisea* var. *thermoidea* (16, 17).

The ascomycete *Humicola grisea* var. *thermoidea* was isolated from Brazilian soil (18), and it belongs to the Sordariomycetes class and the Sordariales order. The genus *Humicola* was described in 1914 by Traaen for the species *Humicola fuscoatra* and *H. grisea*. The *Humicola* species are capable of growing in a diverse set of substrates, such as soil, decomposing plant biomass, and agriculture residues (19). Recently, the genus *Humicola* was revised through a thorough phylogenetic analysis and *H. grisea* was renamed *Trichocladium griseum*. This fungus is considered thermophilic because it can grow in moderate to high temperatures, with optimal growth of around 40 to 42°C (20).

Several studies reported that *H. grisea* var. *thermoidea* produces a wide range of thermostable CAZymes, such as cellulases (21), glucoamylase (22), beta-glucosidases (23), xylanases (24), feruloyl esterases (25), and chitinases (26). In this view, *H. grisea* var. *thermoidea* represents a promising microorganism for application in different industrial processes, such as plant biomass deconstruction (27); recycled paper (28), detergents (29), and food processing (25). Additionally, there are extensive reports about the potential of *H. grisea* var. *thermoidea* as an efficient hydrolase gene donor that can be cloned and expressed in diverse heterologous hosts (7, 30, 31).

To unveil the global hydrolytic potential of *H. grisea* var. *thermoidea*, its genome was sequenced and annotated for the first time in this work. Transcriptome analysis was also performed after *H. grisea* growth on an inducing (sugarcane bagasse) and a repressing (glucose) carbon source at pH 5 or pH 8. The results allowed the determination of the genetic repertoire of this fungus and the comparison with other fungi from the Sordariomycetes class.

TABLE 1 Genome features of *H. grisea* var. *thermoidea* and genome comparison with other filamentous fungi

Feature	<i>H. grisea</i> var. <i>thermoidea</i>	<i>T. terrestris</i>	<i>C. globosum</i>	<i>N. crassa</i>	<i>T. reesei</i>	<i>A. nidulans</i>	<i>T. lanuginosus</i>
Genome size	28.75 Mb	36.91 Mb	34.9 Mb	39.9 Mb	34.1 Mb	31.67 Mb	23.3 Mb
Scaffolds	33	6	37	21	89	91	6
N_{50}	1.805 Mb	9.477 Mb	4.721 Mb	6.00 Mb		2.44 Mb	4.00 Mb
GC content	55.9%	54.8%	55.4%	48.6%	51.0%	50.3%	52.2%
Genes	8,736	9,813	11,232	10,812	9,143	9,541	5,105
Secreted proteins	781	789	862 ^a	592 ^a		704 ^a	
Completeness	98.20%			97%	99%	95%	98%
References	This work	13	59	38	35	60	61

^aData from Lum and Min, 2011 (62).

RESULTS

***Humicola grisea* genome features.** The genome of *H. grisea* var. *thermoidea* was sequenced in an Illumina-based whole-genome shotgun sequencing approach. This resulted in 9,460,608 paired reads of 2 by 150 bp, with an approximate insert size of 350 bp combined with 6,837,917 mate-paired reads of about 3,000 bp long. The acquired sequence reads were assembled into 33 scaffolds with a total length of 28.75 Mb (Table 1). This size is smaller than that described for the thermophilic neighbors *M. thermophila* (38.74 Mb) and *T. terrestris* (36.91 Mb) and the mesophilic *Chaetomium globosum* (34.9 Mb) and *Neurospora crassa* (39.9 Mb) (Table 1; Fig. 1A). Despite the small size, the genome seems close to its finishing size, showing 98.2% of completeness (accessed with BUSCO v2.0.1 analysis).

Genome structural and functional annotation was performed using *ab initio* predictors and homology to proteins and transcripts from Sordariomyceta, as well as data from the RNA-seq experiment realized in this study (see Materials and Methods). Gene modeling yielded 8,736 coding sequences, a smaller number than that of other fungi from the Sordariales. Indeed, this number is relatively close to that of *M. thermophila*, 9,110, but around 20% lower than the number of predicted genes in *N. crassa* (10,620) and *Chaetomium globosum* (11,124) (Fig. 1C). The important cellulose-degrading enzyme producer *T. reesei*, Hypocreales, presents a slightly superior number of predicted genes (Fig. 1C).

The protein domains encoded by *H. grisea* genome were compared with those of other fungi using InterProScan and SignalP4.1. Like other Sordariales, *H. grisea* showed a Pfam domain in approximately 67% of the putative carried genes (Fig. 1D). A total of 781 proteins are potentially secreted, including CAZymes and proteases (Table 1). These comparisons must be made with caution due to the different approaches used to generate gene/protein models in different projects. The GC content is the highest among the related fungi (Fig. 1B). This could be related to thermophilism and the high gene density of the genome (303.9 genes/Mb) (13).

***Humicola grisea* CAZyme genes.** To have a better insight into the *H. grisea* biomass degradation potential, the genes encoding CAZymes of fungi from Sordariales, Hypocreales, and Eurotiales were compared (Fig. 1D) (Supplemental File 1). In the CAZy database classification (32, 33), proteins are grouped based on their similarity in amino acid sequences, catalytic mechanisms, and structural characteristics. Those families are auxiliary activities (AA), carbohydrate-binding module (CBM), carbohydrate esterases (CE), glycoside hydrolases (GH), glycosyl transferases (GT), and polysaccharide lyases (PL) (34).

H. grisea possesses a vast number of genes encoding carbohydrate-active enzymes (a total of 435), comparable in number with those of *M. thermophila* and *T. reesei* (Fig. 1D). The fungi that primarily consume monosaccharides, like *Saccharomyces cerevisiae*, *Kluyveromyces lactis*, and *Yarrowia lipolytica*, have around 120 CAZymes (14). Among cell wall degraders, this number varies considerably. For instance, compared to the other members of Sordariales, *H. grisea* has only 159 genes encoding GH. In contrast, *T. reesei* is capable of producing 200 GHs, whereas *N. crassa* (produces 171 GHs), *Aspergillus niger*, and *Aspergillus fumigatus* (Eurotiales) are among the bigger producers, reaching almost 300 GHs (Fig. 1D) (35).

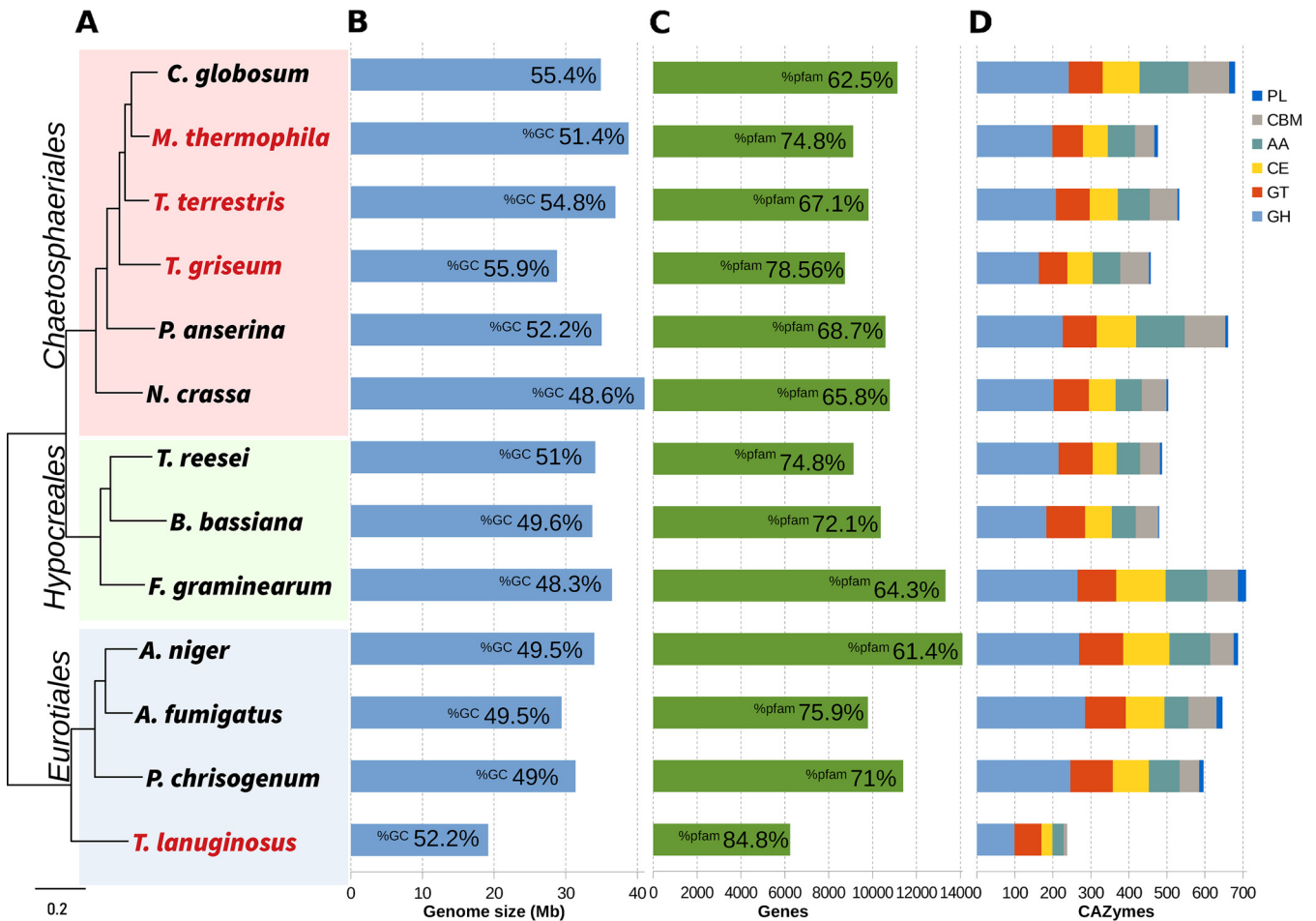


FIG 1 Genome features of 13 Ascomycetes genomes. (A) The RAxML maximum-likelihood phylogenetic tree using 200 single-copy genes shows the three orders Sordariales, Hypocreales, and Eurotiales. All nodes have maximum support value. Thermophile genomes are shown in red. (B) Genome size and percentage of GC of each genome. (C) Gene count and percentage of genes with the presence of at least one Pfam domain. (D) Distribution of CAZyme families among the genomes. CAZymes: auxiliary activities (AA), carbohydrate-binding module (CBM), carbohydrate esterases (CE), glycoside hydrolases (GH), glycosyl transferases (GT), and polysaccharide lyases (PL).

The importance of complex carbohydrates as nutrients for *H. grisea* is demonstrated by the number of GH (159), CE (66), AA (71), CBM (54), and PL (4) (Fig. 1D), as well as the number of genes specifically related to degradation of plant-based polysaccharides (Table 2), found in its genome. In general, these numbers are close to those of other members of the Sordariales family, like *N. crassa*, *M. thermophila*, and *T. terrestris*, but slightly lower than those of *C. globosum*, a fungus that showed the higher number of CAZymes in this order (Fig. 1D; Table 2). However, significant differences among the enzyme families can be found among the fungi. While *T. reesei* showed a higher number of GH and GT than did *H. grisea*, it possessed fewer AA (61), CBM (45), and CE (61) enzymes. These observations corroborate with previous reports of the relatively lower number of hemicellulases produced by *T. reesei*, which does not produce tannase and feruloyl esterase (35). On the other hand, *H. grisea* is an efficient hemicellulose degrader (7, 25, 36, 37).

Differential gene expression during *H. grisea* growth on sugar cane bagasse in different pH values. The genome sequencing and annotation of *H. grisea* demonstrated the fungus's genetic repertoire of cell wall-degrading enzymes. To identify the genes involved in *H. grisea* early growth in lignocellulosic biomass, a genome-wide RNA-seq transcriptional profiling was used. Cultivations were carried out using milled sugarcane bagasse as an inducing carbon source and glucose as a repressing one, at both pH 5 and pH 8. A total of 323,849,916 sequence reads were obtained after quality

TABLE 2 Number of genes related to degradation of plant-based polysaccharides^a

Genome	Cellulose	Xylan	Galactomannan	Xyloglucan	Pectin	Starch	Inulin
<i>T. lanuginosus</i>	4	8	1	4	5	12	1
<i>Penicillium chrisogenum</i>	12	9	11	5	28	28	6
<i>A. fumigatus</i>	18	15	11	8	50	24	5
<i>A. niger</i>	14	10	9	8	48	19	5
<i>Fusarium graminearum</i>	21	29	6	9	39	18	6
<i>Beauveria bassiana</i>	3	16	3	5	3	12	1
<i>T. reesei</i>	9	10	11	7	6	10	0
<i>N. crassa</i>	24	15	3	3	15	15	2
<i>Podospora anserina</i>	49	54	5	4	12	14	0
<i>H. grisea</i>	39	36	2	4	7	12	0
<i>T. terrestris</i>	33	28	3	5	20	14	1
<i>M. thermophila</i>	34	31	4	4	16	14	0
<i>C. globosum</i>	59	47	5	7	22	14	1

^aGene numbers related to degradation of different plant-based polysaccharides detected in the selected genomes according to De Vries et al., 2017 (63). Cellulose: GH5_4, GH5_5, GH5_22, GH6, GH7, GH45; xylan: GH10, GH11, GH62, GH67, GH115, CE1, CE15; galactomannan: GH5_7, GH26, GH27, GH36, GH134; xyloglucan: GH12, GH29, GH74, GH95; pectin: GH28, GH53, GH78, GH88, GH93, GH105, PL1, PL3, PL4, PL9, PL11, PL22, CE8, CE12; starch: GH13_1, GH13_5, GH13_40, GH15, GH31, GH133; inulin: GH32.

trimming and then aligned onto the reference genome. The principal-component analysis (PCA) of samples and replicates based on expression patterns using the DESeq2 package reveals the discrimination between samples (three biological replicates for each condition) and the good quality and reproducibility of the data (Supplemental File 2).

To map the differentially expressed genes, the data on sugarcane were normalized with the data using glucose as the sole carbon source. The MAplots in Fig. 2 show the distribution of *H. grisea* transcripts at pH 5 and pH 8. Growth at pH 8 resulted in a number of differentially expressed genes higher than that of growth at pH 5 (4,438 and 1,376, respectively). At pH 5, 838 genes were upregulated and 539 were downregulated. On the other hand, at pH 8, 2,032 genes were upregulated and 2,405 were downregulated. Figure 3A shows that 350 genes were exclusively differentially expressed at pH 5, whereas 3,410 genes were exclusively expressed at pH 8. A total of 1,027 genes were differentially expressed at both pH values. These genes show the highest fold change in expression, and some of them are related to carbohydrate metabolic and catabolic processes (Fig. 3).

Functional categories were assigned to the differentially expressed genes according to Gene Ontology (GO). To enrich the category analysis for up- and downregulated genes at each pH, a Fisher exact test ($P < 0.05$) was performed (Fig. 3B). Categories related to the oxidation-reduction process and carbohydrate metabolic process and others related to the primary metabolism were significantly upregulated at both pH 5 and pH 8. Any category was exclusively upregulated at pH 5, whereas categories' cellular response to stress and DNA metabolic process were upregulated at pH 8 (Fig. 3B). On the other hand, downregulated categories showed a larger diversity of functions: RNA metabolism, transmembrane transporter, and electron carrier.

The top 10 upregulated genes at both pH values represent genes encoding CAZymes: cellulases, xylanases, mannanases, AA9 enzymes, and esterases (Table 3). Furthermore, the expression of these transcripts was further increased at pH 8. For instance, for the endo- β -1,4-glucanase (EGLD) gene, the \log_2 FC for pH 8 was 9.11 compared with the \log_2 FC of 5.16 at pH 5. Among these classes of enzymes, the expression of acetylxylan esterase-, endo-1,4- β -mannosidase-, exoglucanase-, and endoglucanase-encoding genes can be observed at both pH values. Indeed, most of the transcripts in Table 3 correspond to CAZy GH and AA families.

CAZy enzymes expression. To better understand the transcriptional regulation of genes encoding cell wall-degrading enzymes, we evaluated the differential expression of the CAZy family's genes during growth in sugarcane bagasse presence. Fig. 4 shows the expression of glycoside hydrolases according to the predicted enzyme-substrate,

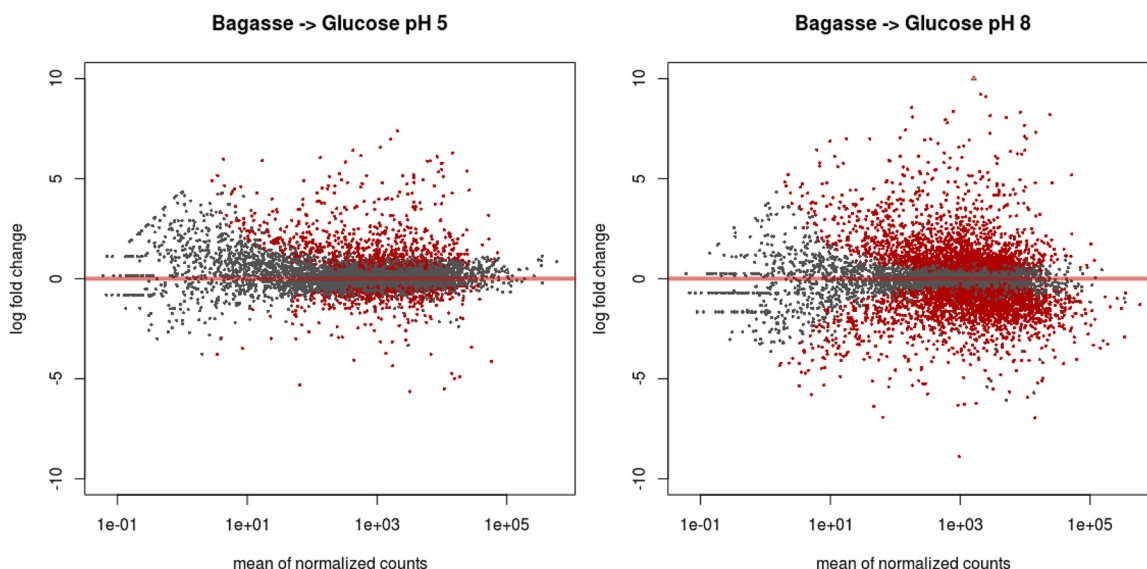


FIG 2 Distribution of gene expression of *H. grisea* grown in sugarcane bagasse normalized with growth on glucose as the sole carbon source. The two pH values, pH 5 (A) and pH 8 (B), exhibited differentially expressed genes (P value adjusted of <0.05) showed in red when normalized with glucose.

whereas Supplemental File 3 shows the expression data set for all CAZy families. For cellulose, six of GH's families were expressed by *H. grisea* (1, 3, 5, 6, 7, and 12). However, the genes in these families exhibited different expression patterns (up- and downregulated at different pHs) (Fig. 4). Families GH3 and GH7 are the biggest ones, represented by seven and five enzymes, respectively. Family GH7 encompasses key enzymes for biomass degradation, such as endo- β -1,4-glucanases, endo- β -1,3-glucanases, and reducing end cellobiohydrolases. The GH3 family comprises enzymes like β -glucosidase, xylan 1,4- β -xylosidase, and α -L-arabinofuranosidase. Only two transcripts from the GH12 family, including an endoglucanase, were shown as differentially expressed (Fig. 4).

For the degradation of β -glucan, most of the enzyme-encoding genes did not show differential expression. Only few genes from the GH16 and GH55 families were upregulated at pH 8 (Fig. 4). Specifically, the genes 4196 and 4368, which encode glucan endo-1,3-beta-glucosidase A1 and glucan 1,3-beta-glucosidase, showed the highest fold change in expression, 6.11 and 5.04, respectively, for the families associated with degradation of β -glucan (Fig. 4; Supplemental File 3). A similar pattern of nonsignificant differential expression was verified for genes related to α -glucan and α -mannan degradation (Fig. 4). For α -glucan as the substrate, one transcript for the GH13 family (ID1245), encoding an alpha-amylase A, was upregulated at both pH values, whereas ID 3551, encoding an alpha-glucosidase, was upregulated only at pH 8 (Fig. 4). Families GH31 and GH71 each presented one gene downregulated at pH 8. For α -mannan as the substrate, one sequence (ID 1366), corresponding to the GH47 family (α -mannosidase), was also downregulated at pH 8. The GH92 family, composed of different types of mannosyl and mannosidases, presented the upregulation of one transcript (ID 4350) at pH 8.

For the xylan and xyloglucan substrates, four GH families (10, 11, 30, and 74) presented down- or upregulated transcripts upon *H. grisea* growth on sugarcane bagasse (Fig. 4). Five genes from the GH10 family, comprising endoxylanases and xylan endo-transglycosylases, were differentially regulated. The GH11 family genes (endo- β -1,3-xylanase and endo- β -1,4-xylanase) were upregulated. For arabinofuranosidase and β -xylosidase as the substrates, genes encoding four enzyme families were expressed, with GH43 (β -xylosidase and α -L-arabinofuranosidase) demonstrating the four most expressed transcripts but also the less expressed one (ID 8513) (Fig. 4). As with other substrates, some genes from the same family presented different expression patterns. These results

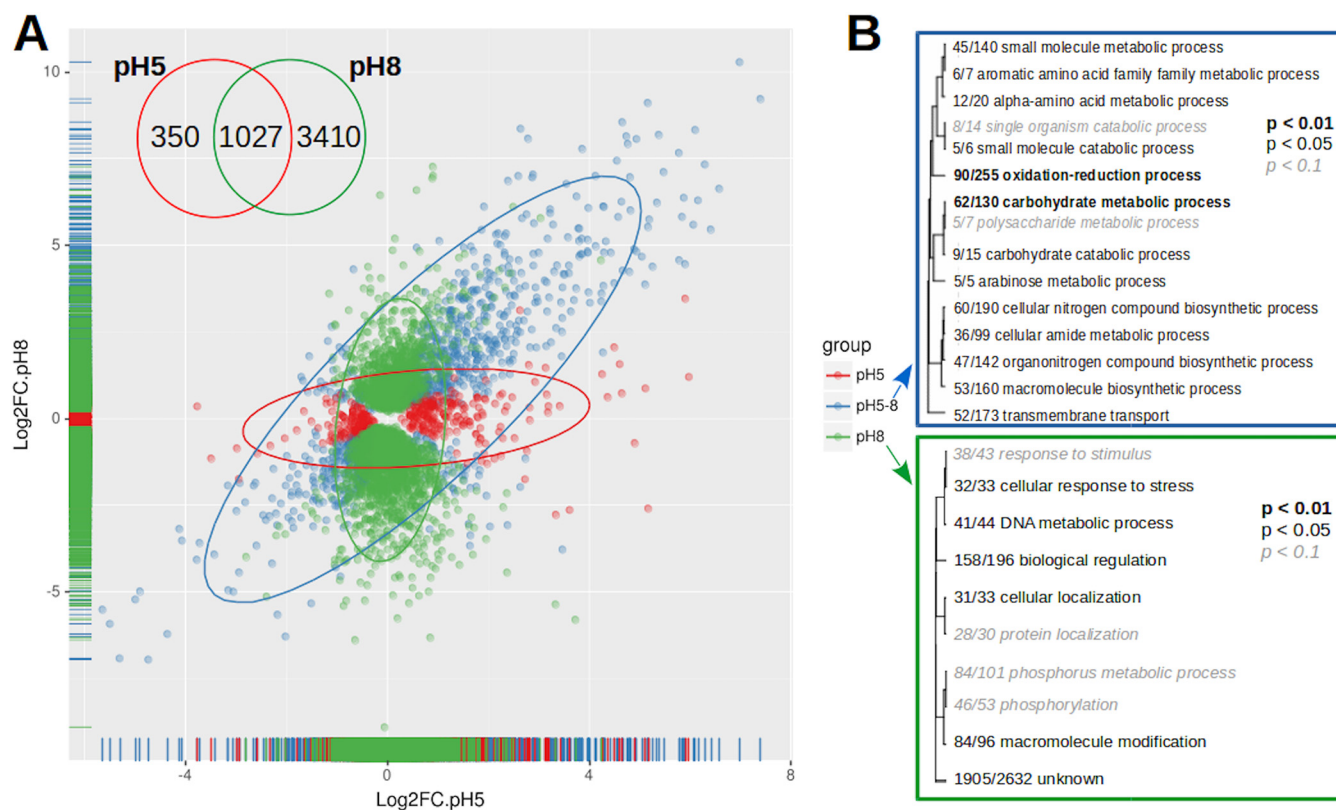


FIG 3 Differentially expressed genes at pH 5, pH 8, or both values. (A) Scatterplot of differentially expressed genes at pH 5 or pH 8. The colors denote genes expressed at pH 5 (red), pH 8 (green), and both conditions (blue). The Venn diagram shows the number of exclusive and shared genes between the pH values. (B) Fisher enrichment analysis of GO terms on each condition compared to the whole genome as background. No category exclusively enriched at pH 5 was found.

corroborate previous reports that demonstrate the *H. grisea* efficiency in hemicellulose degradation (7, 24, 25, 36). Comparatively, the genome annotations of *T. reesei* and *N. crassa* indicate that they can produce 16 and 19 hemicelluloses (GH families 10, 11, 26, 29, 43, 51, 53, 54, 62, 67, 74, and 95), compared with the 24 of *H. grisea* (35, 38).

Additionally, to evaluate the pH-dependence expression of lignocellulolytic enzymes in *H. grisea* var. *thermoidea* more broadly, the expression profiles of CAZymes in pH 5 and pH 8 were compared, and the genes potentially under the control of the transcription factor *pacC* were identified by searching the *pacC*-binding consensus 5'-GCCARG-3' within the upstream region in each corresponding gene. From the 387 genes putatively encoding CAZymes identified in the transcriptome of *H. grisea*, 191 present a domain to *pacC* (Supplemental File 3) (Fig. 4). The potential broad regulation of *PacC* on putative glycoside hydrolase-encoding genes in *H. grisea* var. *thermoidea* is shown in Fig. 4, which is in good agreement with the increased number of genes upregulated at pH 8 (Fig. 3). The pH signaling cascade in *A. nidulans* has at least six members (*palA*, *palB*, *palC*, *palF*, *palH*, and *pall*), which are also present in the *H. grisea* genome (17). However, the expression pattern of this signaling cascade is not clear in the transcriptome data, with only *pall* being differentially expressed in bagasse normalized with glucose at pH 8. The *palF* gene is found in the genome, but no transcriptome reads were mapped to this region.

DISCUSSION

This study brings for the first time insights into the genome of the fungus *H. grisea* var. *thermoidea* and reveals its enzymatic potential for the degradation of plant biomass through the analysis of its transcriptome. Regarding the genome, the size is smaller than that described for the thermophilic neighbors, and a high GC content is similar to that of other fungi within the family. The reduction of the genome size is a

TABLE 3 Expression of top 10 genes differentially expressed and upregulated at pH 5 and pH 8

Putative genes (blast best-hit)	log ₂ FC pH 5	log ₂ FC pH 8	CAZy annotation
Top 10 genes upregulated at pH 5			
<i>axe1</i> acetylxylan esterase	7.39	9.22	CE5-CBM1
<i>manA</i> endo-1,4-beta-mannosidase	6.97	10.27	GH26-CBM35
<i>cel1</i> cellulose-growth-specific protein	6.57	6.63	AA9
<i>bxB</i> exo-1,4-beta-xylosidase	6.40	5.46	GH3
<i>eglD</i> endo-beta-1,4-glucanase D	6.29	7.32	CBM1-AA9
Pectin lyase-like protein	6.15	6.28	
<i>gux1</i> exoglucanase 1	6.10	8.32	GH7
<i>pme</i> pectinesterase	6.06	5.58	CE8
Hypothetical protein	5.97	1.19	
FSH1 serine hydrolase	5.90	3.46	
Top 10 genes upregulated at pH 8			
<i>manA</i> endo-1,4-beta-mannosidase	6.97	10.27	GH26-CBM35
<i>axe1</i> acetylxylan esterase	7.39	9.22	CE5-CBM1
<i>eglD</i> endo-beta-1,4-glucanase D	5.16	9.11	AA9
CUT1 cutinase	4.65	8.55	CE5
Hypothetical protein	2.64	8.35	AA9
<i>gux1</i> exoglucanase 1	6.10	8.32	GH7
LIP3 secreted lipase	5.37	8.19	CE10
<i>xyn2</i> endo-1,4-beta-xylanase 2	4.73	8.14	GH11
<i>ganA</i> arabinogalactan endo-beta-1,4-galactanase	2.78	8.08	GH53
<i>manC</i> mannan endo-1,4-beta-mannosidase C	4.93	8.05	GH5

characteristic strongly associated with thermostability in fungi, as well as a high GC content (13, 39). The genomic and transcriptomic analysis demonstrated that *H. grisea* var. *thermoidea* represents a promising microorganism for application in plant biomass deconstruction. It possesses a wide range of putative CAZymes, several of which are related to plant-based polysaccharides degradation. Indeed, several thermostable enzymes of *H. grisea* targeting biomass deconstruction (mainly cellulose and hemicellulose) have been expressed and characterized (7, 21–26, 30, 31).

Among the 211 putative genes encoding CAZy enzymes identified in the transcriptome analysis of *H. grisea*, the most expressed transcripts were cellulases (endoglucanases and cellobiohydrolases) and hemicellulases (especially xylanases), which correlate well with the enzyme activities required for growth on sugarcane bagasse as the sole carbon source. When the secretome of *T. reesei* and *A. niger* was analyzed upon growth on sugarcane biomass, the GH families involved in the deconstruction of celluloses 3, 5, 6, 7, and 12 were found in *A. niger*, whereas GH 3, 5, 6, and 7 were secreted by *T. reesei* (40). In comparison, all of these GH's families were expressed by *H. grisea*. A higher variety of enzymes is necessary for the degradation of the hemicellulose because it contains different types of sugar chains, such as arabinoxylan, β -glucan, and xyloglucan. In the secretome of *A. niger* and *T. reesei*, the families GH10 and GH11 (endoxylanases), GH3 (β -xylosidase), GH43, GH51, and GH54 (arabinofuranosidases), and GH35 (galactosidases) were found (40, 41). In comparison, in *H. grisea*, GH10, 11, 43, and 51 were also expressed. However, these comparisons should be made with caution because the CAZy response can be different because of the experimental conditions (i.e., different compositions of sugarcane biomass), and the expression data may not correlate with the number of enzymes secreted.

In addition, the transcriptome analysis of *H. grisea* revealed a consistent upregulation of AA9 proteins when the fungus was cultivated in sugarcane bagasse in both pH 5 and pH 8. This could suggest a synergism between AA9 and GHs families expressed differentially since these proteins enhance the activity from one another. The transcriptome of the *T. terrestris* LPH172 showed abundantly expressed AA9 lytic polysaccharide monoxygenase (LPMO) genes in Avicel, rice straw, and beechwood xylan. The presence of LPMO-encoding genes in thermophilic fungus confirms the importance of (AA9) LPMOs for plant biomass decomposition (39). Currently, several studies have

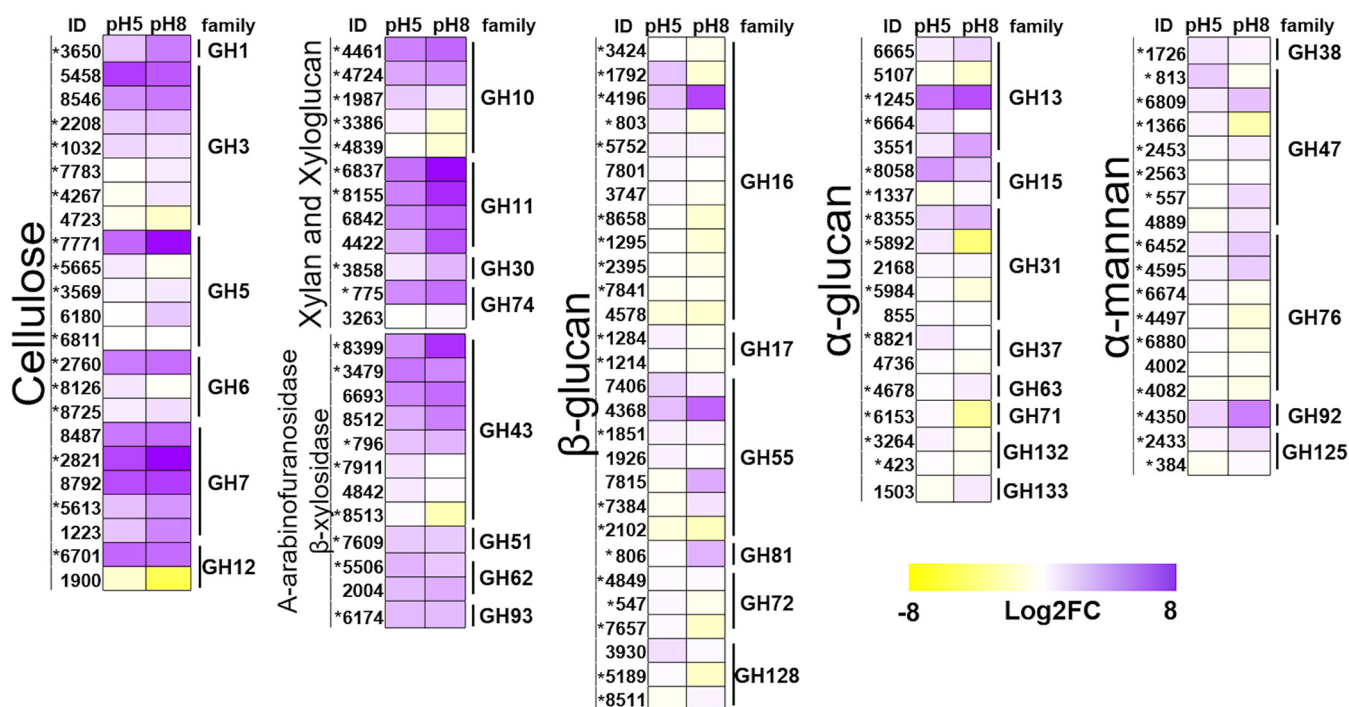


FIG 4 Expression of putative genes encoding glycoside hydrolases (GH) separated by the likely substrate. The asterisk (*) means the gene is potentially regulated by the PacC regulator.

demonstrated the action of oxidative enzymes, such as lytic polysaccharide monoxygenases (LPMOs) classified as AA, capable of degrading cellulose together with cellulases (42–44). Moreover, a recent study demonstrated the boosting effect of recombinant hemicellulases (endoxylanase-HXYN2 and β -xylosidase-HXYLA) from *H. grisea* together with an α -L-arabinofuranosidase (AFB3) from *Penicillium purpurogenum* in the hydrolysis of sugarcane bagasse, exhibiting the potential of these enzymes from *H. grisea* to compose enzymatic consortiums for biomass hydrolysis (45).

The expression of several glycoside hydrolases (Table 3; Fig. 4) of *H. grisea* var. *thermoidea* was further increased at pH 8. These results corroborate the refined time course expression profile established for *H. grisea* var. *thermoidea* glycoside hydrolase-encoding genes when the fungus was grown at different pH values and distinct carbon sources performed by Mello-de-Sousa and collaborators (46). These authors described an early parallel increase in mRNA accumulation for *cbh1.1*, *cbh1.2*, *egl1*, *egl2*, *egl3* (endoglucanase), *bgl4* (beta-glucosidase), and *xyn1* (xylanase) genes at alkaline milieu (pH 8.0) with sugarcane bagasse as the sole carbon source. A distinct profile was observed for the endoglucanase *egl4* transcripts, which preferably accumulated in acidic conditions (46). In addition, electrophoretic mobility shift assays (EMSAs) indicated that the CreA and PacC transcription factors are involved in the carbon source and pH regulation, respectively, of *H. grisea* var. *thermoidea* cellulase genes (46). Similar to what happens in *H. grisea*, a variable number of genes encoding cellulases and hemicellulases are affected not only by available carbon source but also by the pH of the culture medium due to regulation at the transcriptional level of PacC in *T. reesei*, *A. fumigatus*, *A. nidulans*, and *N. crassa* (17, 47, 48). These findings of genome and transcriptome information enable comparative studies to better understand the molecular mechanisms, the metabolic changes, and the evolution of different species within this group of fungi.

Conclusions. This is the first description of important aspects of the biology, physiology, and evolution of the thermophilic fungus *H. grisea* var. *thermoidea* using genome sequencing and genome-wide transcriptome analysis. The 28.75 Mb genome contains 8,736 putative genes and is smaller than others from Sordariomycetes. The GC content is similar to that of the other species within the Chaetomiaceae family,

suggesting a correlation with thermophilism. The transcriptome analysis revealed that alkaline pH is a key regulatory factor for glycoside hydrolases. The expression of 211 different genes for CAZy enzymes when cultivated in sugarcane bagasse demonstrates the great arsenal that *H. grisea* possesses to degrade the lignocellulosic biomass. This work paves the way for the genetic manipulation and robust biotechnological applications of this fungus.

MATERIALS AND METHODS

Fungal strain. The fungus *Humicola grisea* var. *thermoidea* isolated from Brazilian soil (18) was maintained at 42°C on 4.0% (wt/vol) oatmeal (Quaker) solid medium. For mycelium obtainment, 10⁶ spores/ml were inoculated in 50 ml of Pontecorvo's minimal medium (MM) (49), at pH 6.8 (nonbuffered), enriched with 0.25% (wt/vol) yeast extract and 0.1% (wt/vol) peptone and supplemented with 1% (wt/vol) glucose. Incubation proceeded for 24 h (42°C/120 rpm).

Cultivation. The conditions employed were similar to those described in Mello-de-Souza et al. (46). Briefly, *H. grisea* var. *thermoidea* was cultivated at 42°C on 4.0% (wt/vol) oatmeal (Quaker) solid medium without photoperiod. For mycelial growth, 10⁶ conidia/ml were inoculated in 50 ml of Pontecorvo's minimal medium (MM), enriched with 0.25% (wt/vol) yeast extract and 0.1% (wt/vol) bacterial peptone, and supplemented with 1% (wt/vol) glucose at pH 6.8 (nonbuffered). The incubation occurred at 42°C, 120 rpm, for 24 h. The mycelium produced was used for DNA extraction and to initiate transcriptome experiments.

For the transcriptome experiment, pregrown mycelium from 12 flasks was filtered, washed with sterile water, and transferred to fresh 50 ml MM, supplemented with 1% (wt/vol) glucose (GLU) or 0.1% (wt/vol) ball-milled, steam-exploded sugarcane bagasse (SCB) as the sole carbon sources. The culture medium pH was adjusted to 5.0 or 8.0 (buffered with 100 mM sodium citrate). Based on a previous report (46) that demonstrated the early induction of cellulases and xylanases of *H. grisea* grown in SCB, cultures were incubated for 6 h at 42°C, 120 rpm. Then, mycelia were harvested, washed with cold sterile water, drained, frozen in liquid nitrogen, and stocked at -80°C. In total, 12 independent samples were collected, three biological samples for each culture condition (GLU pH 5, GLU pH 8, SCB pH 5, and SCB pH 8).

DNA and RNA isolation. The mycelia obtained from the cultivation in MM were immediately ground in liquid nitrogen into a fine powder. DNA was isolated using the DNAzol reagent (Invitrogen), according to the manufacturer's instructions. For RNA extraction, the mycelia from the 12 samples (3 biological replicates) were grounded in liquid nitrogen into a fine powder and RNA was isolated using the TRIzol reagent (Invitrogen) following the manufacturer's instructions.

RNAs were quantified by spectrophotometry and the integrity was evaluated by electrophoresis in 1.0% agarose gel stained with 0.5 μg ml⁻¹ ethidium bromide. The RNA samples were then treated with DNase I (RQ1 RNase-free DNase-Promega).

Genome assembly and annotation. *H. grisea* var. *thermoidea* genomic DNA (gDNA) was sequenced by two strategies: short inserts (Illumina Hiseq2000 paired-end 2 by 150 bp) and mate pairs (Illumina Hiseq2000 paired-end 2 by 100 bp with an average insert size of 3,000 bp). FastQC (<https://www.bioinformatics.babraham.ac.uk/projects/fastqc/>) was used to evaluate the libraries quality before and after trimming. For quality trimming and sequence filtering, the tophat NGS QC Toolkit was employed to remove sequencing adapters' residues and low-quality reads.

The assembly was performed with AllPaths-LG (<https://software.broadinstitute.org/allpaths-lg/blog/>) using a maximum coverage of 100× for each library. Genome structural and functional annotation was performed with the MAKER pipeline (50) using three *ab initio* predictors: Augustus (51), SNAP (52), and GeneMark-ES (53). Two data sets of proteins and transcripts from Sordariomycetes retrieved from the RefSeq/GenBank were used as structural support, as well as Trinity-assembled transcripts derived from the RNA-seq experiment described in "Transcriptome analysis." Functional annotation of the predicted genes was made using InterProScan v.5.21.60 with embedded PFAM v29, Gene Ontology, InterProScan, and SignalP4.1 programs/databases.

CAZymes were predicted based on the dbCAN v6.0 HMMs pipeline. Transporters were predicted based on Transporter Classification Database – TCDB (<http://www.tcdb.org/>) and transcription factors based on DBD - Transcription factor prediction database (54), both using minimum criteria of an E value of <1e⁻¹⁰ and identity of >35% on blastp analysis. Genome completeness was accessed with BUSCO v2.0.1 using the Sordariomycetes core data set (55). Complete genome assembly and annotation were deposited at DDBJ/EMBL/GenBank under accession [QQBE00000000](https://www.ncbi.nlm.nih.gov/nuccore/QQBE00000000).

Analysis of protein family evolution. The evolution of CAZymes family size variation (expansion or contraction) was analyzed by CAFE (56) using as input an ortholog table generated by OrthoFinder (57) and CAZY annotation, with a *P* value of 0.01 and applying a stochastic model of gene death and birth.

Transcriptome analysis. Illumina Hiseq2000 100 bp paired-end reads were used for transcript quantification. Quality-filtered reads were mapped to the *H. grisea* assembled in this work using the TopHat2 v2.0.4 aligner (<http://ccb.jhu.edu/software/tophat>), and HTSeq version 0.6.0 was used to count reads mapped to *H. grisea* genome. The R package DESeq2 version 1.6.3 was used to perform the differential expression analysis, using the raw number of reads mapped to each gene in each sample to perform statistical tests, based on the negative binomial distribution, which indicates whether a gene is differentially expressed in a condition relative to another gene. Therefore, the DESeq2 package was utilized for normalization, using the median log deviation, and for the differential expression analysis, applying an adjusted *P* value of ≤0.05 as the threshold. Functional enrichment analysis of differentially expressed

genes based on Gene Ontology (GO) terms was performed using the R package GO_MWU (https://github.com/z0on/GO_MWU). The RNA data set was deposited at DDBJ/EMBL/GenBank under accession PRJNA717364.

Genes under *pacC* regulation. In order to detect genes potentially under the transcription factor *pacC* control, we generated a FASTA file with 1,500 bp upstream (5' UTR) from each gene and then the detection of *pacC*-binding consensus 5'-GCCARG-3' within the region (58). A one-sided enrichment test (Fisher exact test) was performed, and after false-discovery rate correction, none of the samples were significantly enriched in bagasse and not pH.

Data analysis. The genome and transcriptome data sets generated and analyzed during the current study are available in the GenBank (<https://www.ncbi.nlm.nih.gov/>) under accession numbers QQBE00000000 and PRJNA717364.

SUPPLEMENTAL MATERIAL

Supplemental material is available online only.

SUPPLEMENTAL FILE 1, XLSX file, 0.04 MB.

SUPPLEMENTAL FILE 2, XLSX file, 0.2 MB.

SUPPLEMENTAL FILE 3, PDF file, 0.04 MB.

ACKNOWLEDGMENTS

We declare that we have no competing interests. This work was supported by EMBRAPA, Project SEG 03.12.11.002.00.00. L.A.S. received a scholarship from CAPES. Material preparation and data collection were performed by J.R.M.A. and L.A.S., bioinformatic analyses were performed by A.S.S. and E.F.F., the first draft of the manuscript was written by L.A.S., A.S.S., and J.R.M.A., and all authors commented on previous versions of the manuscript. M.J.P.F., F.P.F., and J.R.M.A. contributed to the study conception and design and funding acquisition. All authors read and approved the final manuscript.

REFERENCES

- Braga M, Ferreira PM, Almeida JRM. 2020. Screening method to prioritize relevant bio-based acids and their biochemical processes using recent patent information. *Biofuels*, Bioprod Bioref 15:231–249.
- Veras HCT, Campos CG, Nascimento IF, Abdelnur PV, Almeida JRM, Parachin NS. 2019. Metabolic flux analysis for metabolome data validation of naturally xylose-fermenting yeasts. *BMC Biotechnol* 19:58. <https://doi.org/10.1186/s12896-019-0548-0>.
- de Jong E, Stichnothe H, Bell G, Jorgensen H, de Bari I, van Haveren J, Lindorfer J. 2020. Bio-based chemicals. *IEA Bioenergy*.
- Singhvi MS, Gokhale DV. 2019. Lignocellulosic biomass: hurdles and challenges in its valorization. *Appl Microbiol Biotechnol* 103:9305–9320. <https://doi.org/10.1007/s00253-019-10212-7>.
- Singh B, Poças-Fonseca MJ, Johri BN, Satyanarayana T. 2016. Thermophilic molds: biology and applications. *Crit Rev Microbiol* 42:985–1006. <https://doi.org/10.3109/1040841X.2015.1122572>.
- Saldarriaga-Hernández S, Velasco-Ayala C, Leal-Isla Flores P, de Jesús Rostro-Alanis M, Parra-Saldivar R, Iqbal HMN, Carrillo-Nieves D. 2020. Biotransformation of lignocellulosic biomass into industrially relevant products with the aid of fungi-derived lignocellulolytic enzymes. *Int J Biol Macromol* 161:1099–1116. <https://doi.org/10.1016/j.ijbiomac.2020.06.047>.
- Cintra LC, Fernandes AG, de Oliveira ICM, Siqueira SJL, Costa IGO, Colussi F, Jesuino RSA, Ulhoa CJ, de Faria FP. 2017. Characterization of a recombinant xylose tolerant β -xylosidase from *Humicola grisea* var. *thermoidea* and its use in sugarcane bagasse hydrolysis. *Int J Biol Macromol* 105:262–271. <https://doi.org/10.1016/j.ijbiomac.2017.07.039>.
- García-Huante Y, Cayetano-Cruz M, Santiago-Hernández A, Cano-Ramírez C, Marsch-Moreno R, Campos JE, Aguilar-Osorio G, Benitez-Cardoza CG, Trejo-Estrada S, Hidalgo-Lara ME. 2017. The thermophilic biomass-degrading fungus *Thielavia terrestris* Co3Bag1 produces a hyperthermophilic and thermostable β -1,4-xylanase with exo- and endo-activity. *Extremophiles* 21:175–186. <https://doi.org/10.1007/s00792-016-0893-z>.
- Bala A, Singh B. 2019. Cellulolytic and xylanolytic enzymes of thermophiles for the production of renewable biofuels. *Renew Energy* 136:1231–1244. <https://doi.org/10.1016/j.renene.2018.09.100>.
- Bala A, Alokika A, Kumar A, Kumar S, Singh D, Singh B. 2020. Secretome analysis of thermophilic mould *Myceliophthora thermophila* cultivated on rice straw and hydrolysis of lignocellulosic biomass for bioethanol production. *Biocatal Biotransformation* 38:283–292.
- Lombard V, Golaconda Ramulu H, Drula E, Coutinho PM, Henrissat B. 2014. The carbohydrate-active enzymes database (CAZY) in 2013. *Nucleic Acids Res* 42:D490–495. <https://doi.org/10.1093/nar/gkt1178>.
- Martinez D, Berka RM, Henrissat B, Saloheimo M, Arvas M, Baker SE, Chapman J, Chertkov O, Coutinho PM, Cullen D, Danchin EGJ, Grigoriev IV, Harris P, Jackson M, Kubicek CP, Han CS, Ho I, Larrondo LF, de Leon AL, Magnuson JK, Merino S, Misra M, Nelson B, Putnam N, Robbertse B, Salamov AA, Schmoll M, Terry A, Thayer N, Westerholm-Parvinen A, Schoch CL, Yao J, Barabote R, Nelson MA, Detter C, Bruce D, Kuske CR, Xie G, Richardson P, Rokhsar DS, Lucas SM, Rubin EM, Dunn-Coleman N, Ward M, Brettin TS. 2011. Genome sequencing and analysis of the biomass-degrading fungus *Trichoderma reesei* (syn. *Hypocrea jecorina*). *Nat Biotechnol* 5:553–560. <https://doi.org/10.1038/nbt1403>.
- Berka RM, Grigoriev IV, Otilar R, Salamov A, Grimwood J, Reid I, Ishmael N, John T, Darmond C, Moisan MC, Henrissat B, Coutinho PM, Lombard V, Natvig DO, Lindquist E, Schmutz J, Lucas S, Harris P, Powlowski J, Bellemare A, Taylor D, Butler G, De Vries RP, Allijn IE, Van Den Brink J, Ushinsky S, Storms R, Powell AJ, Paulsen IT, Elbourne LDH, Baker SE, Magnuson J, Laboissiere S, Clutterbuck AJ, Martinez D, Wogulis M, De Leon AL, Rey MW, Tsang A. 2011. Comparative genomic analysis of the thermophilic biomass-degrading fungi *Myceliophthora thermophila* and *Thielavia terrestris*. *Nat Biotechnol* 29:922–929. <https://doi.org/10.1038/nbt.1976>.
- Hüttner S, Nguyen TT, Granchi Z, Chin-A-Woeng T, Ahrén D, Larsbrink J, Thanh VN, Olsson L. 2017. Combined genome and transcriptome sequencing to investigate the plant cell wall degrading enzyme system in the thermophilic fungus *Malbranchea cinnamomea*. *Biotechnol Biofuels* 10:265. <https://doi.org/10.1186/s13068-017-0956-0>.
- Kolbusz MA, Di Falco M, Ishmael N, Marquetteau S, Moisan MC, Baptista CDS, Powlowski J, Tsang A. 2014. Transcriptome and exoproteome analysis of utilization of plant-derived biomass by *Myceliophthora thermophila*. *Fungal Genet Biol* 72:10–20. <https://doi.org/10.1016/j.fgb.2014.05.006>.
- Häkkinen M, Sivasiddharth D, Aro N, Saloheimo M, Pakula TM. 2015. The effects of extracellular pH and of the transcriptional regulator PACI on the

- transcriptome of *Trichoderma reesei*. *Microb Cell Fact* 14:63. <https://doi.org/10.1186/s12934-015-0247-z>.
17. Kunitake E, Hagiwara D, Miyamoto K, Kanamaru K, Kimura M, Kobayashi T. 2016. Regulation of genes encoding cellulolytic enzymes by Pal-PacC signaling in *Aspergillus nidulans*. *Appl Microbiol Biotechnol* 100:3621–3635. <https://doi.org/10.1007/s00253-016-7409-8>.
 18. Araujo EF, Barros EG, Caldas RA, Silva DO. 1983. Beta-glucosidase activity of a thermophilic cellulolytic fungus, *Humicola* sp. *Biotechnol Lett* 5: 781–784. <https://doi.org/10.1007/BF01386502>.
 19. Wang XW, Houbraken J, Groenewald JZ, Meijer M, Andersen B, Nielsen KF, Crous PW, Samson RA. 2016. Diversity and taxonomy of Chaetomium and Chaetomium-like fungi from indoor environments. *Stud Mycol* 84: 145–224. <https://doi.org/10.1016/j.simyco.2016.11.005>.
 20. Wang XW, Yang FY, Meijer M, Kraak B, Sun BD, Jiang YL, Wu YM, Bai FY, Seifert KA, Crous PW, Samson RA, Houbraken J. 2019. Redefining *Humicola* sensu stricto and related genera in the Chaetomiaceae. *Stud Mycol* 93:65–153. <https://doi.org/10.1016/j.simyco.2018.07.001>.
 21. Yoshioka H, Anraku SI, Hayashida S. 1982. Production and purification of a novel type of CMcase from *Humicola grisea* var. *thermoidea* YH-78. *Agric Biol Chem* 46:75–82.
 22. Campos L, Felix CR. 1995. Purification and characterization of a glucoamylase from *Humicola grisea*. *Appl Environ Microbiol* 61:2436–2438. <https://doi.org/10.1128/aem.61.6.2436-2438.1995>.
 23. Filho EXF. 1996. Purification and characterization of a β -glucosidase from solid-state cultures of *Humicola grisea* var. *thermoidea*. *Can J Microbiol* 42: 1–5. <https://doi.org/10.1139/m96-001>.
 24. Rana BK, Johri BN, Thakur IS. 1996. Formation and activities of xylan-hydrolysing enzymes of *Humicola grisea* var. *thermoidea*. *World J Microbiol Biotechnol* 12:12–15. <https://doi.org/10.1007/BF00327791>.
 25. Mandalari G, Bisignano G, Lo Curto RB, Waldron KW, Faulds CB. 2008. Production of feruloyl esterases and xylanases by *Talaromyces stipitatus* and *Humicola grisea* var. *thermoidea* on industrial food processing by-products. *Bioresour Technol* 99:5130–5133. <https://doi.org/10.1016/j.biortech.2007.09.022>.
 26. Kumar M, Brar A, Vivekanand V, Pareek N. 2018. Process optimization, purification and characterization of a novel acidic, thermostable chitinase from *Humicola grisea*. *Int J Biol Macromol* 116:931–938. <https://doi.org/10.1016/j.ijbiomac.2018.05.125>.
 27. De-Paula EH, Ramos LP, De Azevedo MO. 1999. The potential of *Humicola grisea* var. *thermoidea* for bioconversion of sugar cane bagasse. *Bioresour Technol* 68:35–41. [https://doi.org/10.1016/S0960-8524\(98\)00081-9](https://doi.org/10.1016/S0960-8524(98)00081-9).
 28. Moriya RY, Gonçalves AR, Faria FP. 2005. Enzymatic bleaching of Organosolv sugarcane bagasse pulps with recombinant xylanase of the fungus *Humicola grisea* and with commercial castzyme HS xylanase. *Appl Biochem Biotechnol* 121–124:195–204. <https://doi.org/10.1385/abab:121:1-3:0195>.
 29. Shimonaka A, Murashima K, Koga J, Baba Y, Nishimura T, Kubota H, Kono T. 2006. Amino acid regions of family 45 endoglucanases involved in cotton defibrillation and in resistance to anionic surfactants and oxidizing agents. *Biochim Biophys Acta* 170:2460–2466. <https://doi.org/10.1016/j.bbap.2006.02.000>.
 30. de Faria FP, Te'O VJS, Bergquist PL, Azevedo MO, Nevalainen KMH. 2002. Expression and processing of a major xylanase (XYN2) from the thermophilic fungus *Humicola grisea* var. *thermoidea* in *Trichoderma reesei*. *Lett Appl Microbiol* 34:119–123. <https://doi.org/10.1046/j.1472-765x.2002.01057.x>.
 31. Benoliel B, Poças-Fonseca MJ, Torres FAG, De Moraes LMP. 2010. Expression of a glucose-tolerant β -glucosidase from *Humicola grisea* var. *thermoidea* in *Saccharomyces cerevisiae*. *Appl Biochem Biotechnol* 160: 2036–2044. <https://doi.org/10.1007/s12010-009-8732-7>.
 32. Henrissat B, Davies G. 1997. Structural and sequence-based classification of glycoside hydrolases. *Curr Opin Struct Biol* 7:637–644. [https://doi.org/10.1016/s0959-440x\(97\)80072-3](https://doi.org/10.1016/s0959-440x(97)80072-3).
 33. Henrissat B, Terrapon N, Coutinho PM, Lombard V, Drula E, Garron M-L, Hornung B. Carbohydrate-active enzymes. [Internet]. Available at <http://www.cazy.org/>. Accessed 3 February 2020.
 34. Davies G, Gilbert H, Henrissat B, Svensson B, Vocadlo D, Williams S. 2018. Ten years of CAZyPedia: a living encyclopedia of carbohydrate-active enzymes. *Glycobiology* 28:3–8.
 35. Martinez D, Berka RM, Henrissat B, Saloheimo M, Arvas M, Baker SE, Chapman J, Chertkov O, Coutinho PM, Cullen D, Danchin EGJ, Grigoriev IV, Harris P, Jackson M, Kubicek CP, Han CS, Ho I, Larrondo LF, de Leon AL, Magnuson JK, Merino S, Misra M, Nelson B, Putnam N, Robertse B, Salamov AA, Schmol M, Terry A, Thayer N, Westerholm-Parvinen A, Schoch CL, Yao J, Barabote R, Barbote R, Nelson MA, Detter C, Bruce D, Kuske CR, Xie G, Richardson P, Rokhsar DS, Lucas SM, Ruben EM, Dunn-Coleman N, Ward M, Brettin TS. 2008. Genome sequencing and analysis of the biomass-degrading fungus *Trichoderma reesei* (syn. *Hypocrea jecorina*). *Nat Biotechnol* 26:553–560. <https://doi.org/10.1038/nbt1403>.
 36. Faria SP, de Melo GR, Cintra LC, Ramos LP, Amorim Jesuino RS, Ulhoa CJ, de Faria FP. 2020. Production of cellulases and xylanases by *Humicola grisea* var. *thermoidea* and application in sugarcane bagasse arabinoxylan hydrolysis. *Ind Crops Prod* 158. <https://doi.org/10.1016/j.indcrop.2020.112968>.
 37. Medeiros RG, Coelho LA, Filho EXF. 2008. Agricultural Residues as Source for Production of Hemicellulases from *Humicola grisea* var. *thermoidea*. *Dyn Biochem Process Biotechnol Mol Biol* 2:30–33.
 38. Galagan JE, Calvo SE, Borkovich KA, Selker EU, Read NO, Jaffe D, FitzHugh W, Ma LJ, Smirnov S, Purcell S, Rehman B, Elkins T, Engels R, Wang S, Nielsen CB, Butler J, Endrizzi M, Qui D, Ianakiev P, Bell-Pedersen D, Nelson MA, Werner-Washburne M, Selitrennikoff CP, Kinsey JA, Braun EL, Zelter A, Schulte U, Kothe GO, Jedd G, Mewes W, Staben C, Marcotte E, Greenberg D, Roy A, Foley K, Naylor J, Stange-Thomann N, Barrett R, Gnerre S, Kamal M, Kamysysselis M, Maucelli E, Bielke C, Rudd S, Frishman D, Krystofova S, Rasmussen C, Metzberg RL, Perkins DD, Kroken S, Cogoni C, et al. 2003. The genome sequence of the filamentous fungus *Neurospora crassa*. *Nature* 422:859–868. <https://doi.org/10.1038/nature01554>.
 39. Tölgo M, Hüttner S, Rugbjerg P, Thuy NT, Thanh VN, Larsbrink J, Olsson L. 2021. Genomic and transcriptomic analysis of the thermophilic lignocellulose-degrading fungus *Thielavia terrestris* LPH172. *Biotechnol Biofuels* 14:131–116. <https://doi.org/10.1186/s13068-021-01975-1>.
 40. Borin GP, Sanchez CC, De Souza AP, De Santana ES, De Souza AT, Leme AFP, Squina FM, Buckeridge M, Goldman GH, De Castro Oliveira JV. 2015. Comparative secretome analysis of *Trichoderma reesei* and *Aspergillus niger* during growth on sugarcane biomass. *PLoS One* 10:e0129275-20. <https://doi.org/10.1371/journal.pone.0129275>.
 41. Marx IJ, Van Wyk N, Smit S, Jacobson D, Viljoen-Bloom M, Volschenk H. 2013. Comparative secretome analysis of *Trichoderma asperellum* S4F8 and *Trichoderma reesei* Rut C30 during solid-state fermentation on sugarcane bagasse. *Biotechnol Biofuels* 6:172. <https://doi.org/10.1186/1754-6834-6-172>.
 42. Horn SJ, Vaaje-Kolstad G, Westereng B, Eijsink VGH. 2012. Novel enzymes for the degradation of cellulose novel enzymes for the degradation of cellulose. *Biotechnol Biofuels* 5:45. <https://doi.org/10.1186/1754-6834-5-45>.
 43. Monclaro AV, Filho EXF. 2017. Fungal lytic polysaccharide monoxygenases from family AA9: recent developments and application in lignocellulose breakdown. *Int J Biol Macromol* 102:771–778. <https://doi.org/10.1016/j.ijbiomac.2017.04.077>.
 44. Østby H, Hansen LD, Horn SJ, Eijsink VGH, Várnai A. 2020. Enzymatic processing of lignocellulosic biomass: principles, recent advances and perspectives. *J Ind Microbiol Biotechnol* 47:623–657. <https://doi.org/10.1007/s10295-020-02301-8>.
 45. Cintra LC, da Costa IC, de Oliveira ICM, Fernandes AG, Faria SP, Jesuino RSA, Ravanal MC, Eyzaguirre J, Ramos LP, de Faria FP, Ulhoa CJ. 2020. The boosting effect of recombinant hemicellulases on the enzymatic hydrolysis of steam-treated sugarcane bagasse. *Enzyme Microb Technol* 133: 109447. <https://doi.org/10.1016/j.enzmictec.2019.109447>.
 46. Mello-de-Sousa TM, Silva-Pereira I, Poças-Fonseca MJ. 2011. Carbon source and pH-dependent transcriptional regulation of cellulase genes of *Humicola grisea* var. *thermoidea* grown on sugarcane bagasse. *Enzyme Microb Technol* 48:19–26. <https://doi.org/10.1016/j.enzmictec.2010.08.007>.
 47. Stewart JC, Parry JB. 1981. Factors influencing the production of cellulase by *Aspergillus fumigatus* (Fresenius). *J Gen Microbiol* 125:33–39. <https://doi.org/10.1099/00221287-125-1-33>.
 48. Antoniêto ACC, Pedersoli WR, Dos Santos Castro L, Da Silva Santos R, Da Silva Cruz AH, Nogueira KMW, Silva-Rocha R, Rossi A, Silva RN. 2017. Deletion of pH regulator *pac-3* affects cellulase and xylanase activity during sugarcane bagasse degradation by *Neurospora crassa*. *PLoS One* 12:e0169796. <https://doi.org/10.1371/journal.pone.0169796>.
 49. Pontecorvo G, Roper JA, Hemmons LM, Macdonald KD, Bufton AWJ. 1953. The genetics of *Aspergillus nidulans*. *Adv Genet* 5:141–238. [https://doi.org/10.1016/s0065-2660\(08\)60408-3](https://doi.org/10.1016/s0065-2660(08)60408-3).
 50. Holt C, Yandell M. 2011. MAKER2: an annotation pipeline and genome-database management tool for second-generation genome projects. *BMC Bioinformatics* 12:491. <https://doi.org/10.1186/1471-2105-12-491>.
 51. Ter-Hovhannisyan V, Lomsadze A, Chernoff YO, Borodovsky M. 2008. Gene prediction in novel fungal genomes using an ab initio algorithm with unsupervised training. *Genome Res* 18:1979–1990. <https://doi.org/10.1101/gr.081612.108>.
 52. Stanke M, Diekhans M, Baertsch R, Haussler D. 2008. Using native and syntetically mapped cDNA alignments to improve de novo gene finding. *Bioinformatics* 24:637–644. <https://doi.org/10.1093/bioinformatics/btn013>.

53. Korf I. 2004. Gene finding in novel genomes. *BMC Bioinformatics* 5:59. <https://doi.org/10.1186/1471-2105-5-59>.
54. Kummerfeld SK, Teichmann SA. 2006. DBD: a transcription factor prediction database. *Nucleic Acids Res* 34:D74–D81. <https://doi.org/10.1093/nar/gkj131>.
55. Simão FA, Waterhouse RM, Ioannidis P, Kriventseva EV, Zdobnov EM. 2015. BUSCO: assessing genome assembly and annotation completeness with single-copy orthologs. *Bioinformatics* 31:3210–3212. <https://doi.org/10.1093/bioinformatics/btv351>.
56. Han MV, Thomas GWC, Lugo-Martinez J, Hahn MW. 2013. Estimating gene gain and loss rates in the presence of error in genome assembly and annotation using CAFE 3. *Mol Biol Evol* 30:1987–1997. <https://doi.org/10.1093/molbev/mst100>.
57. Emms DM, Kelly S. 2019. OrthoFinder: phylogenetic orthology inference for comparative genomics. *Genome Biol* 20:238. <https://doi.org/10.1186/s13059-019-1832-y>.
58. MacCabe AP, Van Den Hombergh JPTW, Tilburn J, Arst HN, Visser J. 1996. Identification, cloning and analysis of the *Aspergillus niger* gene *pacC*, a wide domain regulatory gene responsive to ambient pH. *Mol Gen Genet* 250:367–374. <https://doi.org/10.1007/BF02174395>.
59. Cuomo CA, Untereiner WA, Ma LJ, Grabherr M, Birren BW. 2015. Draft genome sequence of the cellulolytic fungus *Chaetomium globosum*. *Genome Announc* 3:e00021-15. <https://doi.org/10.1128/genomeA.00021-15>.
60. Galagan JE, Calvo SE, Cuomo C, Ma L-J, Wortman JR, Batzoglou S, Lee S-I, Baştürkmen M, Spevak CC, Clutterbuck J, Kapitonov V, Jurka J, Sczzocchio C, Farman M, Butler J, Purcell S, Harris S, Braus GH, Draht O, Busch S, D'Enfert C, Bouchier C, Goldman GH, Bell-Pedersen D, Griffiths-Jones S, Doonan JH, Yu J, Vienken K, Pain A, Freitag M, Selker EU, Archer DB, Peñalva MÁ, Oakley BR, Momany M, Tanaka T, Kumagai T, Asai K, Machida M, Nierman WC, Denning DW, Caddick M, Hynes M, Paoletti M, Fischer R, Miller B, Dyer P, Sachs MS, Osmani SA, Birren BW. 2005. Sequencing of *Aspergillus nidulans* and comparative analysis with *A. fumigatus* and *A. oryzae*. *Nature* 438:1105–1115. <https://doi.org/10.1038/nature04341>.
61. Mchunu NP, Permaul K, Rahman AYA, Saito JA, Singh S, Alam M. 2013. Xylanase superproducer: genome sequence of a compost-loving thermophilic fungus, *Thermomyces lanuginosus* strain SSBP. *Genome Announc* 1:e00388-13. <https://doi.org/10.1128/genomeA.00388-13>.
62. Lum G, Min XJ. 2011. FunSecKB: the fungal secretome KnowledgeBase. Database (Oxford) 2011:bar001. <https://doi.org/10.1093/database/bar001>.
63. De Vries RP, Riley R, Wiebenga A, Aguilar-Osorio G, Amillis S, Uchima CA, Anderluh G, Asadollahi M, Askin M, Barry K, Battaglia E, Bayram Ö, Benocci T, Braus-Stromeyer SA, Caldana C, Cánovas D, Cerqueira GC, Chen F, Chen W, Choi C, Clum A, dos Santos RAC, de Lima Damásio AR, Diallinas G, Emri T, Fekete E, Flippin M, Freyberg S, Gallo A, Gournas C, Habgood R, Hainaut M, Harispe ML, Henrissat B, Hildén KS, Hope R, Hossain A, Karabika E, Karaffa L, Karányi Z, Kraševac N, Kuo A, Kusch H, LaButti K, Lagendijk EL, Lapidus A, Levasseur A, Lindquist E, Lipzen A, Logrieco AF, et al. 2017. Comparative genomics reveals high biological diversity and specific adaptations in the industrially and medically important fungal genus *Aspergillus*. *Genome Biol* 18. <https://doi.org/10.1186/s13059-017-1151-0>.