

UCLA

UCLA Previously Published Works

Title

Manipulation and mobilization for treating chronic low back pain: a systematic review and meta-analysis

Permalink

<https://escholarship.org/uc/item/49v1j9t3>

Journal

The Spine Journal, 18(5)

ISSN

1529-9430

Authors

Coulter, Ian D
Crawford, Cindy
Hurwitz, Eric L
[et al.](#)

Publication Date

2018-05-01

DOI

10.1016/j.spinee.2018.01.013

Peer reviewed



Published in final edited form as:

Spine J. 2018 May ; 18(5): 866–879. doi:10.1016/j.spinee.2018.01.013.

Manipulation and mobilization for treating chronic low back pain: a systematic review and meta-analysis

Ian D. Coulter, PhD^{a,b,c,*}, Cindy Crawford, BA^a, Eric L. Hurwitz, DC, PhD^{a,d}, Howard Vernon, DC, PhD^{a,e}, Raheleh Khorsan, PhD^f, Marika Suttorp Booth, MS^a, and Patricia M. Herman, ND, PhD^a

^aRAND Corporation, 1776 Main St, Santa Monica, CA 90407-2138, USA

^bUCLA School of Dentistry, Box 951668, Los Angeles, CA 90095-1668, USA

^cSouthern California University of Health Sciences, 16200 Amber Valley Dr, Whittier, CA 90604, USA

^dOffice of Public Health Studies, University of Hawai'i, M ooa, 1960 East-West Rd, Biomed D104AA, Honolulu, HI 96822, USA

^eDivision of Research, Canadian Memorial Chiropractic College, 6100 Leslie St, Toronto, ON, Canada M2H 3J1

^fUCI Department of Urban Planning and Public Policy, 300 Social Ecology I, Irvine, CA 92697-7075, USA

Abstract

BACKGROUND CONTEXT—Mobilization and manipulation therapies are widely used to benefit patients with chronic low back pain. However, questions remain about their efficacy, dosing, safety, and how these approaches compare with other therapies.

PURPOSE—The present study aims to determine the efficacy, effectiveness, and safety of various mobilization and manipulation therapies for treatment of chronic low back pain.

STUDY DESIGN/SETTING—This is a systematic literature review and meta-analysis.

OUTCOME MEASURES—The present study measures self-reported pain, function, health-related quality of life, and adverse events.

METHODS—We identified studies by searching multiple electronic databases from January 2000 to March 2017, examining reference lists, and communicating with experts. We selected

This is an open access article under the CC BY-NC-ND license (<http://creativecommons.org/licenses/by-nc-nd/4.0/>).

*Corresponding author. RAND/Samueli Chair for Integrative Medicine, RAND Corporation, 1776 Main St, Santa Monica, CA 90407-2138, USA. Tel.: 310-393-0411. coulter@rand.org (I.D. Coulter).

FDA device/drug status: Not applicable.

Author disclosures: **IDC**: Grant: NCCIH (NIH) (A, Paid directly to institution/employer). **CC**: Nothing to disclose. **ELH**: Scientific Advisory Board: The Spine Journal (C). **HV**: Nothing to disclose. **RK**: Nothing to disclose. **MSB**: Nothing to disclose. **PMH**: Grant: NCCIH (NIH) (A, Paid directly to institution/employer).

Supplementary material

Supplementary material related to this article can be found at <https://doi.org/10.1016/j.spinee.2018.01.013>.

randomized controlled trials comparing manipulation or mobilization therapies with sham, no treatment, other active therapies, and multimodal therapeutic approaches. We assessed risk of bias using Scottish Intercollegiate Guidelines Network criteria. Where possible, we pooled data using random-effects meta-analysis. Grading of Recommendations, Assessment, Development, and Evaluation (GRADE) was applied to determine the confidence in effect estimates. This project is funded by the National Center for Complementary and Integrative Health under Award Number U19AT007912.

RESULTS—Fifty-one trials were included in the systematic review. Nine trials (1,176 patients) provided sufficient data and were judged similar enough to be pooled for meta-analysis. The standardized mean difference for a reduction of pain was SMD=−0.28, 95% confidence interval (CI) −0.47 to −0.09, $p=.004$; $I^2=57%$ after treatment; within seven trials (923 patients), the reduction in disability was SMD=−0.33, 95% CI −0.63 to −0.03, $p=.03$; $I^2=78%$ for manipulation or mobilization compared with other active therapies. Subgroup analyses showed that manipulation significantly reduced pain and disability, compared with other active comparators including exercise and physical therapy (SMD=−0.43, 95% CI −0.86 to 0.00; $p=.05$, $I^2=79%$; SMD=−0.86, 95% CI −1.27 to −0.45; $p<.0001$, $I^2=46%$). Mobilization interventions, compared with other active comparators including exercise regimens, significantly reduced pain (SMD=−0.20, 95% CI −0.35 to −0.04; $p=.01$; $I^2=0%$) but not disability (SMD=−0.10, 95% CI −0.28 to 0.07; $p=.25$; $I^2=21%$). Studies comparing manipulation or mobilization with sham or no treatment were too few or too heterogeneous to allow for pooling as were studies examining relationships between dose and outcomes. Few studies assessed health-related quality of life. Twenty-six of 51 trials were multimodal studies and narratively described.

CONCLUSION—There is moderate-quality evidence that manipulation and mobilization are likely to reduce pain and improve function for patients with chronic low back pain; manipulation appears to produce a larger effect than mobilization. Both therapies appear safe. Multimodal programs may be a promising option.

Keywords

Chiropractic; Chronic low back pain; Manipulation; Meta-analysis; Mobilization; Systematic review

Introduction

Similar to conclusions reported most recently in BMJ [1], a recent review published in JAMA reported that among patients with acute low back pain, spinal manipulative therapy was associated with modest improvements in pain and function at up to 6 weeks, with transient minor musculoskeletal harms. However, study results showed substantial heterogeneity [2]. The review did not address the efficacy of manipulation and mobilization for chronic low back pain. Given the current interest in non-pharmacological alternatives for the treatment of chronic pain, in particular non-opioid treatments [3], a systematic review of manipulation and mobilization for chronic low back pain is timely.

The lifetime prevalence of low back pain in the United States may be as high as 84%. The prevalence of chronic low back pain is about 23%; it disables 11%–12% of the population

[4]. A recent systematic review of the clinical course of non-specific low back pain found that in the first 3 months, 33% of patients showed recovery, but 1 year after onset, 65% still reported pain [5]. The severity, length, or duration of pain for any one individual varies, and the transition from acute to chronic low back pain is difficult to determine [6].

Pain management approaches vary greatly. Many physicians rely on non-steroidal anti-inflammatory drugs, opioid, and neurotropic medications, or steroid injections and surgery as their main tools [7]. Because of the potential or apparent risks associated with these tools [8], non-pharmacological approaches, thought to involve minimal adverse events, have become popular. In recent years, multiple studies have explored the evidence for treating chronic low back pain; options include spinal manipulation therapy, behavioral therapy, exercise therapy, transcutaneous electrical nerve stimulation, interferential currents, low-level laser therapy, and yoga [9]. Other therapies include massage, acupuncture, and superficial heat therapy (eg, therma heat wraps, hot water bottles, heated packs filled with grain, hot towels, and electric heating pads) [10]. Manual modalities such as physiotherapy, massage, chiropractic, occupational, and osteopathic therapies, including spinal manipulation and mobilization, are often used together and alone to treat chronic non-specific low back pain [11,12].

Several systematic reviews have focused on manual therapies such as spinal manipulation and mobilization for treating back and neck pain [13–16]. Earlier work suggested that there is little or no evidence that spinal manipulative therapy was superior to other standard treatments for chronic low back pain [17,18]; however, recent systematic reviews suggest that spinal manipulation and mobilization are “viable” options for pain treatment [13,19]. However, the efficacy of manipulation and mobilization may vary depending on the duration of symptoms, how the intervention is administered (eg, whether there is additional exercise or general practitioner care, at what dosages, and follow-up periods), the comparator, and types of outcomes reported. Such variability could be considered inconsistent findings; however, the overall evidence suggests that manipulation and mobilization are effective treatment modalities compared with other therapies [13,19].

The purpose of the systematic review described here was to disentangle inconsistencies by evaluating the research according to different symptom durations across the spectrum of chronicity, the variations in treatment techniques, variations in comparators, and the impact on important patient-reported outcomes. Our goal was to better understand the effectiveness of mobilization and manipulation for chronic non-specific low back pain as compared and reported in randomized controlled trials (RCTs) since 2000. We would attempt meta-analysis when there were subsets of data similar enough to pool. This systematic review is part of a larger project investigating the appropriateness of manipulation or mobilization for the treatment of chronic low back pain and cervical pain, funded by the National Center for Complementary and Integrative Health under Award Number U19AT007912.

Methods

This systematic review and meta-analysis report adheres to the Preferred Reporting Items for Systematic Reviews and Meta-Analysis guidelines.

Search strategy and data sources

The systematic review builds upon previous systematic reviews of manipulation and mobilization for chronic low back pain (up through 2000), such as Bronfort et al. [13] and Shekelle et al. [18,20,21]. We designed a broad search strategy that did not define the specific population (ie, not using the word chronic or non-specific) or intervention (ie, spanning across multiple professions). In addition, we placed no limitations on control or comparators, outcomes, or study designs, so that the breadth and variations across the research could be discovered, and the literature could inform the appropriate definitions and subgroups to consider for analysis given that inconsistencies are present. We searched PubMed or MEDLINE, Cochrane, Embase, CINAHL, PsycINFO, and ICL from January 2000 through March 2017. We drew on reference lists and consultation with subject matter experts to ensure comprehensiveness (Fig. 1). Because the National Institutes of Health–funded project focused on both chronic neck pain and chronic low back pain, we executed the search to meet both needs together (Table 1).

Scoping review

A scoping review of the literature informed the definitions of chronicity used in the review. It also clarified what is considered non-specific, and what subgroups should be considered for systematic review and meta-analysis. We reviewed articles and categorized studies according to specific populations, interventions, control or comparators, outcomes, and study designs. We excluded studies clearly not related to back pain or to an intervention involving mobilization or manipulation. We presented findings to an internal steering committee (ISC) and an external advisory committee (EAC), where evidence-informed definitions and specific research questions were devised based on the evidence base for carrying out systematic review and meta-analysis (Table 1).

Study selection

Six reviewers used study eligibility criteria to independently screen the literature in duplicate. Disagreements about inclusion were resolved through discussion and consensus, or if necessary, by the ISC. The eligibility criteria included (1) a population experiencing chronic [6,22] and nonspecific [23] low back pain (as defined in Table 1); (2) an intervention, with the involvement of a therapist, consisting of either (i) manipulation (labeled as thrust), (ii) mobilization (labeled as non-thrust), or (iii) a multimodal integrative practice including manipulation or mobilization components, labeled as a multimodal “program” if the observed effect could not be attributed directly to the thrust or non-thrust intervention (eg, a study of chiropractic plus acupuncture vs. usual care would be multimodal and labeled as a “program” separate from chiropractic plus acupuncture vs. acupuncture); (3) compared with a sham treatment, no treatment, or other active therapies, such as exercise, physiotherapy, or physical therapy; (4) an RCT, involving adult human subjects (age 18 years or older); and (5) at least one pain outcome measuring a reduction in pain intensity or severity, such as the visual analog scale (VAS) or numeric rating scale (Table 1).

Data extraction and quality assessment

Six reviewers participated in data extraction and quality assessment of the individual studies. Population characteristics, treatment intervention(s), control or comparators, and outcomes were described for each included study. Quality assessment was performed in duplicate by reviewers; disagreements were tracked and resolved by the ISC. Risk of bias was assessed using the Scottish Intercollegiate Guidelines Network (SIGN 50) checklist for RCTs [25]. We assessed external validity using the External Validity Assessment Tool (EVAT) [26], which measures the generalizability of research to other individuals (external validity) and other settings (model validity) outside the confines of a study.

Data synthesis and analysis

The primary analysis was based on trials reporting a continuous outcome measure for pain intensity, disability, or health-related quality of life (HRQoL) [27] up to 1 month after the end of treatment. Subgroups were constructed to transparently report those studies where (1) chronicity duration is greater than 3 months or greater than 12 months, (2) intervention consisting of thrust or non-thrust, (3) and were compared with sham or no-treatment or another active intervention, for each outcome assessed. Secondary analyses were based on trials reporting a continuous measure for pain, disability, or HRQoL at follow-up points closest to 3, 6, and 12 months after treatment. Single treatment (one dose over one day) studies were excluded from any analysis. Data synthesis and analysis methods for those multimodal interventions where the effects of manipulation or mobilization could not be distinguished from the total program were not applied as these studies involved more pragmatic, program-type interventions and were heterogeneous from study to study. For simplicity and because many types and styles were included in systematic review, the authors chose to refer to the manipulation therapies as “thrust” and mobilization therapies as “non-thrust” (Table 1). We grouped studies in this way in order to attempt to create homogeneous subsets of studies, allowing us to ask questions about how interventions compare (eg, thrust vs. sham or no treatment, thrust vs. other active therapies); dose regimens and practitioner-specific techniques remained heterogeneous across studies (Supplementary Data Files 1 and 2). Some subgroups were judged too heterogeneous to pool in any meaningful way.

For all studies where data were available, we extracted sample size, mean, and standard deviation for each treatment group, at each time point reported. An unbiased estimate using the Hedges’ effect size [28] and 95% lower and upper limits was computed using intergroup differences between groups at those time points. For a reduction in pain intensity or disability, a negative effect size favors the thrust or non-thrust intervention more than the comparison arm (active comparator, sham, or no treatment group). For an increase in HRQoL, a positive effect size indicates benefit in thrust or non-thrust treatment group more than the comparison arm. This was done regardless of whether the study was considered for meta-analysis or not.

We considered a minimum of three studies judged similar enough in terms of the population, intervention, control or comparator, and outcome measure as sufficient for pooling data for meta-analysis. Standardized mean differences (SMDs) were computed using Comprehensive

Meta-Analysis, Version 3.3.070 (CMA; Biostat, Englewood, NJ, USA). Meta-analyses of SMD were performed with the generic inverse model of REVMAN. Because we expected heterogeneity, we used random-effects models; statistical heterogeneity was examined by I^2 with low, moderate, and high I^2 values of 25%, 50%, and 75%, respectively. Publication bias was assessed using the Begg adjusted rank correlation test [29] and the Egger regression asymmetry test [30]. Pooled effect sizes for pain and disability outcomes were translated into the VAS (0–100) using a standard deviation of 25 points, and the Roland-Morris Disability Questionnaire (0–24), using a standard deviation of 6 points, respectively, for clinical interpretation [17].

We assessed confidence in the effect estimates using the Grading of Recommendations, Assessment, Development and Evaluation (GRADE) approach based on the following criteria: risk of bias, inconsistency, indirectness, imprecision, and publication bias, for each outcome [31].

Results

A total of 7,360 published citations were captured from January 2000 to March 2017, of which 6,663 were screened at title or abstract level according to the broad eligibility criteria. This search also included studies on neck pain, which are not reported here. We retrieved full text for 711 articles; of these, 334 were identified as RCTs on either neck pain or low back pain. After removing the studies on neck pain, a total of 64 RCT publications reporting on patients with chronic, non-specific low back pain were included in this systematic review. Of these, 32 reports [32–63] including 25 unique studies [32–56] were labeled as non-specific chronic low back pain unimodal (ie, thrust or non-thrust) studies; 32 reports [64–95] including 26 unique studies [64,66–90] were multimodal (ie, programs involving thrust or non-thrust) chronic low back pain studies. In addition, non-randomized studies were identified as part of a larger effort, and investigated to gain further understanding of safety issues and more pragmatic “real world” implications beyond that which might be offered in the RCTs evaluated (data not shown) (Fig. 2).

Study characteristics

Characteristics of included studies are detailed in Supplementary Data Files 1 and 2. The included RCTs examining either a uni- or multimodal intervention of thrust or non-thrust for patients with chronic low back pain were published between 2000 and 2014. No studies meeting eligibility criteria were found between 2015 and 2017. The total number of participants across the 51 unique studies was 8,748, ranging from 19 to 1,334 participants in each study. The average age of participants was 42 years, ranging from 29 to 59 years. On average, there were more females than males. For the unimodal (Supplementary Data File 1) studies, participants reported average pain duration of 3 months or more in 60% of included studies, 6 months or more in 12% of studies; in 28% of studies, participants described chronic pain as more than 1 year. Multimodal studies (Supplementary Data File 2) reported participant average pain duration of 3 months or more in 30% of the included studies; fewer studies described participants’ chronic pain lasting 6 months (19%). Lastly, 51% of included studies described participants’ chronic pain as lasting more than 1 year.

Of the 25 unimodal studies, 60% were identified as thrust interventions, 28% were non-thrust interventions, and 12% used a combination of both. Some of these studies were multimodal by design, but were included in this subgroup for the purposes of analysis because the effect of each intervention could be distinguished. A variety of interventions were combined to serve more as “programs” for the included multimodal studies. The most prevalent interventions used in combination with a thrust or non-thrust intervention were prescribed exercises; others included stretches, massage, ultrasound, education, or advice therapy. Combined treatment dosages varied from one session for 3 minutes to 16 sessions of 45 minutes each over the course of 8 weeks. The majority of studies (84%) had active control or comparators (eg, acupuncture, physical therapy, exercise, usual care); the remaining studies compared the intervention with sham or no treatment. Active control or comparator dosages varied from one session for 3 minutes to 16 sessions of 45 minutes each over the course of 8 weeks.

The studies reported outcomes related to pain intensity or severity, disability, and HRQoL, all of which were considered critical outcomes for evaluation. The most common outcome measures were evaluated using the VAS (26 of 51) and the numeric pain rating scale (12 of 51) for pain reduction, the Roland-Morris Disability Questionnaire (21 of 41) or Oswestry Disability Index for disability (16 of 41), and the Short Form-36 for HRQoL (15 of 17) (Supplemental Data Files 1 and 2).

Methodological quality

Overall, risk of bias was not considered serious across either the unimodal or the multimodal studies. Of the 25 unimodal RCT studies [32–56], 3 (12%) were given a SIGN 50 score of high quality (++) [32–34], 18 (72%) as acceptable quality (+) [35–52], and 4 (16%) as low quality (0) [53–56]. Among the 26 multimodal studies, 3 (12%) were rated high quality (++) [88–90], 20 (77%) acceptable quality (+) [68–87,94], and 3 (11%) low quality (0) [64,65,67,96]. The most prevalent poorly addressed quality criteria related to pitfalls in reporting group differences, intention-to-treat analyses, and multisite similarities, respectively. Overall, all EVAT categories were addressed adequately. The source population (44 of 51) and recruitment of participants (39 of 51) were transparently described and reflective of the population from which they were drawn. Twenty-three of 51 studies described the staff, places, and facilities where treatment occurred, but other studies lacked the details required to fully understand the clinical applicability to real-world settings. The majority of studies involved physical therapists, chiropractors, physicians, naturopathic, or osteopathic clinicians. In some, multiple therapists delivered the interventions. Practitioner characteristics were well described in many of studies. Treatment locations varied, including private clinics, university settings, hospitals, or other medical facilities (Table 2).

Adverse events

Of the 25 unimodal RCTs, 5 reported that no adverse events occurred during the study period; 2 reported minor adverse events—typically worsening symptoms. Another study reported that 2% of patients experienced serious adverse events. However, none of these symptoms was determined to be treatment-related, and the frequency of adverse events in

the treatment and control groups was not significantly different. The remaining 17 studies did not provide any information on adverse events in the publications.

None of the multimodal studies reported a serious adverse event. Ten studies failed to report on adverse events and 10 reported that none had occurred. Of the remaining six, the adverse events were noted as mild, including temporary treatment-related soreness, tiredness, or worsening of existing complaints. Of studies that did report adverse events, the authors failed to describe how an event was determined to be adverse, how data were collected, and the intervals for data collection. It appears that this is perhaps spontaneous self-reporting by the subjects in the studies (Supplementary Data Files 1 and 2).

The authors relied on the Food and Drug Administration's definition of an adverse event as any adverse experience during treatment resulting in death, life-threatening adverse experience, hospitalization or prolongation of existing hospitalization, or persistent or significant disability or incapacity (Supplementary Data Files 1 and 2). Of the non-RCT studies examined for the larger project effort, the majority neglected to report on adverse events. Those that did reported either new complaints or worsening of existing complaints after initial treatment; however, these complaints were not associated with worse long-term outcomes and were unlikely to be serious [97–99].

Data synthesis

Studies comparing thrust or non-thrust with a sham or no treatment control were heterogeneous and could not be pooled for analysis in any meaningful way. In addition, dose studies that are included in the systematic review were heterogeneous and omitted from any analysis. As noted previously, we excluded multimodal studies from analysis because of their inherent heterogeneity. The remainder of studies for consideration consisted of those thrust and non-thrust interventions compared with another active therapy, consisting of exercise or physical therapy where treatment was over multiple sessions and post-treatment assessment was closest to 1 month (4–8 weeks from baseline) across outcomes of pain reduction, disability, and enhanced HRQoL.

Reduction in pain

Nine trials (1,176 patients) with a reduction in pain at post-treatment closest to 1 month from baseline and with continuous data were included in the meta-analysis. The pooled SMD across all studies showed a statistically significant larger reduction in pain from thrust or non-thrust interventions compared with an active comparator being that of exercise or physical therapy (SMD=−0.28, 95% CI −0.47 to −0.09, $p=.004$; $I^2=57\%$). Statistical subgroup analyses showed that when compared with active therapies (SMD=−0.43, 95% CI −0.86 to 0.00; $p=.05$, $I^2=79\%$), the data favor thrust interventions for patients with chronic low back pain (5 trials; 481 patients). Among five trials (695 patients), non-thrust interventions, compared with other active comparators, showed a statistically significantly larger reduction in pain (SMD=−0.20, 95% CI −0.35 to −0.04; $p=.01$; $I^2=0\%$). Translated into the VAS, the reduction in pain intensity achieved by thrust interventions equates to 10.75 points larger on a 0–100-mm scale than its comparators; non-thrust interventions

equate to a 5.0-point reduction higher on a 0–100-mm scale compared with other active comparators. Fig. 3 details the overall analysis and the subgroups analyzed.

Secondary analyses comparing varying durations of chronicity or dose were not feasible given the available literature but are specified if documented in the study in Supplementary Data File 1. Data were available for 3 and 6 months follow-up in both thrust and non-thrust compared with other active comparators for pooling into meta-analysis. Thrust interventions compared with other active comparators (3 trials, 370 patients) trended toward an increasing effect over time at 3 months follow-up (SMD=−0.68, 95% CI −1.14 to −0.23; $I^2=73.7%$) and 6 months (3 trials, 223 patients) follow-up (SMD=−0.72, 95% CI −0.99 to −0.45; $I^2=0%$) (data not shown). Non-thrust interventions at 3 and 6 months followup did not significantly change from post-treatment.

Reduction in disability

Seven trials (923 patients) with continuous data were included in the meta-analysis for a reduction in disability at post-treatment closest to 1 month (Fig. 4). The pooled SMD across all studies showed a statistically significant larger reduction in disability from thrust or non-thrust interventions compared with an active comparator (SMD=−0.33, 95% CI −0.63 to −0.03, $p=.03$; $I^2=78%$). Subgroup analysis showed a statistically significant larger effect in favor of thrust (3 trials; 225 patients) compared with other active comparators (SMD=−0.86, 95% CI −1.27 to −0.45; $p<.0001$, $I^2=46%$); however, analysis of non-thrust interventions (5 trials; 698 patients), when compared with other active comparators, did not show a statistically significantly larger reduction in disability after treatment (SMD=−0.10, 95% CI −0.28 to 0.07; $p=.25$; $I^2=21%$). Translated into the Roland-Morris Disability Questionnaire, the reduction in disability by thrust interventions equates to a 5.16-point larger reduction on a 0–24-mm scale than its comparators; non-thrust interventions equates to a 0.6-point reduction larger on a 0–24-mm scale compared with other active comparators. Data were available for 6 months follow-up comparing thrust with other active comparators; the pooled estimate across three trials (223 patients) was an SMD=−0.71 (95% CI −0.98 to −0.44; $I^2=0%$) (data not shown). Non-thrust interventions at 3 and 6 months follow-up did not significantly change from post-treatment (data not shown).

Improved health-related quality of life

Too few studies reported on health-related quality of life to allow for pooling an overall effect estimate at any time point. Where assessed across studies, however, data are detailed in Supplementary Data File 1.

Confidence in the effect estimates

Overall, risk of bias was not of serious concern across analyses or subgroups pooled for each outcome assessed. As expected, we detected statistically significant heterogeneity across the overall analysis for a reduction in pain ($p=.009$) and a reduction in disability ($p=.0001$). Heterogeneity was likely due to pooling various types of intervention techniques, dose regimens, and their comparators. Within the subgroups when compared with active comparators, heterogeneity remained significant for thrust versus other active therapies. The comparators in these studies consisted of various exercise regimens and physical therapy.

There were too few studies to pool according to specific chronicity duration or according to specific predefined dosing cutoffs. The results appeared precise; however, sample size pooled remains small. We detected no publication bias according to either the Begg or Egger test for either the overall analysis or according to subgroups (data not shown). Overall, confidence in the reported effects was graded as moderate for a reduction in pain and disability after treatment.

Discussion

During the period January 2000 to March 2017, the methodological quality of the RCT studies for mobilization and manipulation for chronic low back pain is adequate overall; however, studies remain heterogeneous in terms of dose, duration, techniques involved with varying interventions and different practitioners with perhaps different training and backgrounds, controls or comparators being used across studies, and duration of chronicity of patients included. The source populations and recruitment of the participants seem to reflect the population of interest for the study (external validity); however, the staff, places, and facilities in which patients are receiving therapy are not well described, making extrapolation for real-life settings challenging (model validity).

Mobilization and manipulation appear to be safe, based on what was reported in the literature. A small-moderate effect was found in favor of manipulation for patients with chronic low back pain, with pain duration of at least 3 months or more. This effect seems to increase over time at 3 and 6 months follow-up for reducing pain compared with other active comparators, namely exercise and physical therapy comparators. Manipulation was also shown to reduce disability. The quality of the body of evidence is moderate for both of these outcomes. In the case of studies that defined chronic pain as 12 months or more, there is insufficient evidence to draw any conclusions solely on this chronicity duration from the current literature. Evidence to support mobilization interventions does not seem to be as strong as evidence to support manipulation intervention for chronic low back pain. Although there are several large studies on mobilization compared with active comparators for chronic low back pain, the majority did not show statistically significant differences in favor of mobilization interventions compared with other active comparators. We are moderately confident in the effect estimates being reported.

There is currently a gap in the evidence concerning the efficacy of manipulation and mobilization compared with sham or no treatment on pain or disability in the population studied. Pooling across other subgroups was limited because there were too few sufficiently similar studies. In addition, we were not able to draw definitive conclusions about patients' HRQoL due to data limitations. Unlike the unimodal studies, which evaluated the results from the thrust or non-thrust interventions, the body of evidence from multimodal studies included a variety of interventions and integrated programs. For example, with exercise, individuals were allowed to choose their at-home routine or practitioners prescribed specific treatments. These types of programs may be attractive to patients because the programs may be similar to what would occur in real practice.

Overall completeness and applicability

The European Workgroup guidelines recommend a referral for spinal manipulation therapy, including mobilization, for patients who are suffering from chronic back pain [100]. In the United States, similar recommendations exist in favor of manual therapies including manipulation and mobilization for chronic low back pain [101–103]. However, the recommendations regarding manual therapies for chronic low back pain continue to show some variation depending on country or region of origin. In most guidelines, manipulation is recommended or presented as a therapeutic option. Other guidelines do not recommend it. It is not known why there are such inconsistencies across guidelines [103–105]. Guidelines may have depended largely on panelists' interpretations, which have been based on insufficient or inconclusive evidence or reflected methodological flaws in the reported studies. Other factors that may influence guideline recommendations include local and national political variance or bias [103].

Similar to the practice guidelines, recent systematic reviews have reported favorable evidence for treating chronic nonspecific low back pain using manipulation and mobilization, including chiropractic [13,106], osteopathic manipulation therapy [107], and physical therapy [108]. However, as with practice guidelines, these systematic reviews conclude that the scientific evidence is challenged by heterogeneity in the types of populations and interventions being studied, lacks long-term outcomes, includes insufficient data to explore subgroup effects, and has methodological bias that can limit and complicate the interpretation of the results [11]. Indeed, most systematic reviews conclude that it is difficult to draw definitive conclusions regarding the risk-benefit of manual therapies in patients with chronic non-specific pain.

As stated previously, we relied on the evidence provided by Bronfort et al. [13] and Shekelle et al. [18,20,21] as a starting point for our analysis. We used the definitions of manipulation and mobilization based on Bronfort et al. [13] and Coulter et al. [24]. However, our methodology generated a list of terms a priori to consider for inclusion criteria to meet our definitions. Therefore, our comprehensiveness may have increased the number of RCTs in this report but may have also increased the heterogeneity for the pooled estimates across those studies. Bronfort et al. [13] identified 31 total low back pain trials. Of these, 11 trials (n=1,472) assessed chronic low back pain and 14 trials (n=3,068) investigated a mix of patients with acute and chronic low back pain.

Because of heterogeneity across studies (ie, too dissimilar in terms of patient characteristics, outcome measures, time points, and type of treatment comparisons), we did not statistically pool these studies. However, the results from Bronfort et al. [13] were generally in favor of spinal manipulation or mobilization for treating chronic low back pain. Bronfort et al. [13] and Shekelle and Coulter [21] suggested that recommendations for spinal manipulation may be made with some degree of confidence. They identified gaps in the current literature base that need to be filled in future work, such as the need for future trials to examine well-defined subgroups of patients and further address the value of manipulation and mobilization to establish optimal number of treatment visits. Our review attempted to explore this, but research evidence remains lacking. We found that methodological flaws in the RCTs we analyzed—lack of power (low precision due to sample size) and some inconsistency—

influenced our statistical analysis and the overall quality of the body of evidence. Indeed, better designed studies, more homogeneous groupings, clinically relevant patient-based outcomes, and larger clinical trials are needed to inform practice decisions regarding spinal manipulation and mobilization for patients with chronic non-specific low back pain. However, this review suggests that we can have moderate confidence in the estimate of the effect across the studies for each outcome evaluated and subgroup assessed, and the effect seems to increase over time, especially for manipulation therapy.

Strengths and limitations

This review had several strengths, including (1) the involvement of an ISC to contribute to the question development and the population, intervention, control/comparator and outcome (PICO) framework, as well as to provide guidance throughout the review with an EAC; (2) the use of a systematic, explicit, and transparent methodology, incorporating the evaluation of internal validity (risk of bias), external and model validity, meta-analysis according to patient reported outcomes, and GRADE framework applied to determine the overall quality of evidence for each critical outcome evaluated; and (3) an independent methodological review team to carry out each of the technical steps involved in the review phases. None of the study authors reported any conflict of interests.

The current search, scoping review, and analysis leverage previous efforts and add to the literature by including both manipulation and mobilization interventions not only in chiropractic settings but also in other non-invasive therapy settings such as osteopathy, manual therapy, and physical therapy. Our approach also addresses the complexity of chronicity and non-specificity for populations being studied. We attempted to sort the literature in the most homogeneous fashion, predefining eligibility criteria and specifying very precise definitions with subject matter expertise to drive the systematic review. However, clinical heterogeneity between study groups remains a confounder. Indeed, this is not surprising since chronic pain is a multifactorial condition associated with specific and nonspecific medical disorders. Non-specific chronic low back pain is difficult to evaluate, and the nature of the pain and its underlying pathophysiology are poorly understood. Therefore, chronic non-specific pain, by definition, is heterogeneous. Adequate assessment of pain and use of validated tools are essential prerequisites of a successful pain treatment plan and research study [109]. In addition, the styles, techniques, and dosing or duration of treatment involving manipulation and mobilization vary considerably, and what might work well for one individual may not for another. Stakeholders, including patients, need to be involved to help focus the research on that which could be most impactful to them.

Conclusion

There is moderate-quality evidence that manipulation (ie, thrust) interventions may produce small-moderate reduction in pain intensity compared with other active comparators such as exercise. Thrust interventions are also likely to reduce disability for patients compared with these active comparator interventions. The effect seems to increase over time at 3 and 6 months follow-up. There is moderate-quality evidence that mobilization (ie, non-thrust) interventions are likely to have minimal effect compared with other active comparators in

terms of reducing pain intensity or disability. Multimodal programs may be promising options. More research is needed to assess other important patient reported outcomes in order to strengthen the evidence base regarding mobilization and manipulation for reducing disability and increasing HRQoL for patients with chronic low back pain. The research to date is still heterogeneous, and questions remain about optimal treatment duration, dose requirements, practitioners to be involved, and the kinds of patients who may benefit the most.

Supplementary Material

Refer to Web version on PubMed Central for supplementary material.

Acknowledgments

The authors would like to acknowledge the following individuals for their technical and administrative support throughout the project: Cindy Lentino, Viviane Enslein, Chris Baur, John Bingham, Holly Chittum, Laurie Davidson, and Judy Bearer.

This project is funded by the National Center for Complementary and Integrative Health under Award Number U19AT007912 and does not necessarily represent the official views of the National Institutes of Health. All analysis of data, manuscript preparation, and presentation is the work solely of the authors and free of commercial input, influence, or bias.

References

1. Wise J. Spinal manipulation produces modest improvements in acute low back pain. *BMJ*. 2017; 357:j1843.
2. Paige N, Miake-Lye I, Booth MI, et al. Association of spinal manipulative therapy with clinical benefit and harm for acute low back pain: systematic review and meta-analysis. *JAMA*. 2017; 317:1451–60. [PubMed: 28399251]
3. Dowell D, Haegerich T, Chou R. DC guideline for prescribing opioids for chronic pain—495 united states, 2016. *JAMA*. 2016; 315:1624–45. [PubMed: 26977696]
4. Balague F, Mannion AF, Pellise F, Cedraschi C. Non-specific low back pain. *Lancet*. 2012; 379:482–91. [PubMed: 21982256]
5. Itz CJ, Geurts JW, van Kleef M, Nelemans P. Clinical course of non-specific low back pain: a systematic review of prospective cohort studies set in primary care. *Eur J Pain*. 2013; 17:5–15. [PubMed: 22641374]
6. Office of the Army Surgeon General, Pain Management Task Force. Pain Management Task Force Final Report: providing a standardized DoD and VHA vision and approach to pain management to optimize the care for warriors and their families. Washington, DC: Office of the Army Surgeon General; 2010.
7. Salzberg LD, Manusov EG. Management options for patients with chronic back pain without an etiology. *Health Serv Insights*. 2013; 6:33–8. [PubMed: 25114558]
8. Deyo RA, Mirza SK, Turner JA, Martin BI. Overtreating chronic back pain: time to back off? *J Am Board Fam Med*. 2009; 22:62–8. [PubMed: 19124635]
9. Chou R, Qaseem A, Snow V, et al. Diagnosis and treatment of low back pain: a joint clinical practice guideline from the American College of Physicians and the American Pain Society. *Ann Intern Med*. 2007; 147:478–91. [PubMed: 17909209]
10. Kizhakkeveetil A, Rose K, Kadar GE. Integrative therapies for low back pain that include complementary and alternative medicine care: a systematic review. *Glob Adv Health Med*. 2014; 3:49–64. [PubMed: 25568825]
11. Furlan AD, Yazdi F, Tsertsvadze A, et al. Complementary and alternative therapies for back pain II. *Evid Rep Technol Assess (Full Rep)*. 2010:1–764.

12. Santaguida PL, Gross A, Busse J, et al. Complementary and alternative medicine in back pain utilization report. *Evid Rep Technol Assess (Full Rep)*. 2009; 177:1–221.
13. Bronfort G, Haas M, Evans RL, Bouter LM. Efficacy of spinal manipulation and mobilization for low back pain and neck pain: a systematic review and best evidence synthesis. *Spine J*. 2004; 4:335–56. [PubMed: 15125860]
14. Gross A, Miller J, D'Sylva J, et al. Manipulation or mobilisation for neck pain: a Cochrane Review. *Man Ther*. 2010; 15:315–33. [PubMed: 20510644]
15. Schroeder J, Kaplan L, Fischer DJ, Skelly AC. The outcomes of manipulation or mobilization therapy compared with physical therapy or exercise for neck pain: a systematic review. *Evid Based Spine Care J*. 2013; 4:30–41. [PubMed: 24436697]
16. Furlan AD, Clarke J, Esmail R, Sinclair S, Irvin E, Bombardier C. A critical review of reviews on the treatment of chronic low back pain. *Spine*. 2001; 26:E155–62. [PubMed: 11295917]
17. Assendelft WJ, Morton SC, Yu EI, Suttorp MJ, Shekelle PG. Spinal manipulative therapy for low back pain. A meta-analysis of effectiveness relative to other therapies. *Ann Intern Med*. 2003; 138:871–81. [PubMed: 12779297]
18. Shekelle PG, Adams AH, Chassin MR, Hurwitz EL, Brook RH. Spinal manipulation for low-back pain. *Ann Intern Med*. 1992; 117:590–8. [PubMed: 1388006]
19. Furlan AD, Yazdi F, Tsertsvadze A, et al. A systematic review and meta-analysis of efficacy, cost-effectiveness, and safety of selected complementary and alternative medicine for neck and low-back pain. *Evid Based Complement Alternat Med*. 2012; 2012:953139. [PubMed: 22203884]
20. Shekelle PG, Hurwitz EL, Coulter I, Adams AH, Genovese B, Brook RH. The appropriateness of chiropractic spinal manipulation for low back pain: a pilot study. *J Manipulative Physiol Ther*. 1995; 18:265–70. [PubMed: 7673792]
21. Shekelle PG, Coulter I. Cervical spine manipulation: summary report of a systematic review of the literature and a multidisciplinary expert panel. *J Spinal Disord*. 1997; 10:223–8. [PubMed: 9213278]
22. Deyo RA, Dworkin SF, Amtmann D, et al. Report of the NIH task force on research standards for chronic low back pain. *J Pain*. 2014; 15:569–85. [PubMed: 24787228]
23. Maher C, Underwood M, Buchbinder R. Non-specific low back pain. *Lancet*. 2017; 389:736–47. [PubMed: 27745712]
24. Coulter I, Hurwitz E, Adams A, et al. The appropriateness of manipulation and mobilization of the cervical spine. RAND. 1996 MR-781-CCR.
25. Scottish Intercollegiate Guidelines Network. Sign 50: a guideline developer's handbook. 2010. Available at <http://www.sign.ac.uk/>. Accessed January 1, 2015
26. Khorsan R, Crawford C. How to assess the external validity and model validity of therapeutic trials: a conceptual approach to systematic review methodology. *Evid Based Complement Alternat Med*. 2014; 2014:694804. [PubMed: 24734111]
27. Hawker GA, Mian S, Kendzerska T, French M. Measures of adult pain: Visual Analog Scale for Pain (VAS Pain), Numeric Rating Scale for Pain (NRS Pain), McGill Pain Questionnaire (MPQ), Short-Form McGill Pain Questionnaire (SF-MPQ), Chronic Pain Grade Scale (CPGS), Short Form-36 Bodily Pain Scale (SF-36 BPS), and Measure of Intermittent and Constant Osteoarthritis Pain (ICOAP). *Arthritis Care Res (Hoboken)*. 2011; 63(Suppl. 11):S240–52. [PubMed: 22588748]
28. Hedges, LV., Olkin, I., editors. *Statistical methods for meta-analysis*. Orlando, FL: Academic Press; 1985.
29. Begg CB, Mazumdar M. Operating characteristics of a rank correlation test for publication bias. *Biometrics*. 1994; 50:1088–101. [PubMed: 7786990]
30. Egger M, Davey Smith G, Schneider M, Minder C. Bias in meta-analysis detected by a simple, graphical test. *BMJ*. 1997; 315:629–34. [PubMed: 9310563]
31. GRADE Working Group. Grading of Recommendations Assessment, Development and Evaluation (GRADE). Available at <http://www.gradeworkinggroup.org/>. Accessed November 30, 2011
32. de Oliveira RF, Liebano RE, Costa Lda C, Rissato LL, Costa LO. Immediate effects of region-specific and non-region-specific spinal manipulative therapy in patients with chronic low back pain: a randomized controlled trial. *Phys Ther*. 2013; 93:748–56. [PubMed: 23431209]

33. Haas M, Group E, Kraemer DF. Dose-response for chiropractic care of chronic low back pain. *Spine J.* 2004; 4:574–83. [PubMed: 15363431]
34. Hondras MA, Long CR, Cao Y, Rowell RM, Meeker WC. A randomized controlled trial comparing 2 types of spinal manipulation and minimal conservative medical care for adults 55 years and older with subacute or chronic low back pain. *J Manipulative Physiol Ther.* 2009; 32:330–43. [PubMed: 19539115]
35. Aure OF, Nilsen JH, Vasseljen O. Manual therapy and exercise therapy in patients with chronic low back pain: a randomized, controlled trial with 1-year follow-up. *Spine.* 2003; 28:525–31. discussion 531–2. [PubMed: 12642755]
36. Balthazard P, de Goumoens P, Rivier G, Demeulenaere P, Ballabeni P, Deriaz O. Manual therapy followed by specific active exercises versus a placebo followed by specific active exercises on the improvement of functional disability in patients with chronic non specific low back pain: a randomized controlled trial. *BMC Musculoskelet Disord.* 2012; 13:162. [PubMed: 22925609]
37. Bialosky JE, Bishop MD, Robinson ME, Zeppieri G Jr, George SZ. Spinal manipulative therapy has an immediate effect on thermal pain sensitivity in people with low back pain: a randomized controlled trial. *Phys Ther.* 2009; 89:1292–303. [PubMed: 19797305]
38. Ferreira ML, Ferreira PH, Latimer J, et al. Comparison of general exercise, motor control exercise and spinal manipulative therapy for chronic low back pain: a randomized trial. *Pain.* 2007; 131:31–7. [PubMed: 17250965]
39. Goodsell M, Lee M, Latimer J. Short-term effects of lumbar posteroanterior mobilization in individuals with low-back pain. *J Manipulative Physiol Ther.* 2000; 23:332–42. [PubMed: 10863253]
40. Gudavalli MR, Cambron JA, McGregor M, et al. A randomized clinical trial and subgroup analysis to compare flexion-distraction with active exercise for chronic low back pain. *Eur Spine J.* 2006; 15:1070–82. [PubMed: 16341712]
41. Haas M, Vavrek D, Neradilek MB, Polissar N. A path analysis of the effects of the doctor-patient encounter and expectancy in an open-label randomized trial of spinal manipulation for the care of low back pain. *BMC Complement Altern Med.* 2014; 14
42. Licciardone JC, Stoll ST, Fulda KG, et al. Osteopathic manipulative treatment for chronic low back pain: a randomized controlled trial. *Spine.* 2003; 28:1355–62. [PubMed: 12838090]
43. Mackawan S, Eungpinichpong W, Pantumethakul R, Chatchawan U, Hunsawong T, Arayawichanon P. Effects of traditional Thai massage versus joint mobilization on substance P and pain perception in patients with non-specific low back pain. *J Bodyw Mov Ther.* 2007; 11:9–16.
44. Parker J, Heinking KP, Kappler RE. Efficacy of osteopathic manipulative treatment for low back pain in euhydrated and hypohydrated conditions: a randomized crossover trial. *J Am Osteopath Assoc.* 2012; 112:276–84. [PubMed: 22582197]
45. Petersen T, Larsen K, Nordsteen J, Olsen S, Fournier G, Jacobsen S. The McKenzie method compared with manipulation when used adjunctive to information and advice in low back pain patients presenting with centralization or peripheralization: a randomized controlled trial. *Spine.* 2011; 36:1999–2010. [PubMed: 21358492]
46. Rasmussen J, Laetgaard J, Lindecrona AL, Qvistgaard E, Bliddal H. Manipulation does not add to the effect of extension exercises in chronic low-back pain (LBP). A randomized, controlled, double blind study. *Joint Bone Spine.* 2008; 75:708–13. [PubMed: 19028434]
47. Rasmussen-Barr E, Nilsson-Wikmar L, Arvidsson I. Stabilizing training compared with manual treatment in sub-acute and chronic low-back pain. *Man Ther.* 2003; 8:233–41. [PubMed: 14559046]
48. Vismara L, Cimolin V, Menegoni F, et al. Osteopathic manipulative treatment in obese patients with chronic low back pain: a pilot study. *Man Ther.* 2012; 17:451–5. [PubMed: 22658268]
49. Ritvanen T, Zaproudina N, Nissen M, Leinonen V, Hanninen O. Dynamic surface electromyographic responses in chronic low back pain treated by traditional bone setting and conventional physical therapy. *J Manipulative Physiol Ther.* 2007; 30:31–7. [PubMed: 17224353]
50. Licciardone JC, Minotti DE, Gatchel RJ, Kearns CM, Singh KP. Osteopathic manual treatment and ultrasound therapy for chronic low back pain: a randomized controlled trial. *Ann Fam Med.* 2013; 11:122–9. [PubMed: 23508598]

51. Paatelma M, Kilpikoski S, Simonen R, Heinonen A, Alen M, Videman T. Orthopaedic manual therapy, McKenzie method or advice only for low back pain in working adults: a randomized controlled trial with one year follow-up. *J Rehabil Med.* 2008; 40:858–63. [PubMed: 19242624]
52. Cecchi F, Molino-Lova R, Chiti M, et al. Spinal manipulation compared with back school and with individually delivered physiotherapy for the treatment of chronic low back pain: a randomized trial with one-year follow-up. *Clin Rehabil.* 2010; 24:26–36. [PubMed: 20053720]
53. Konstantinou K, Foster N, Rushton A, Baxter D, Wright C, Breen A. Flexion mobilizations with movement techniques: the immediate effects on range of movement and pain in subjects with low back pain. *J Manipulative Physiol Ther.* 2007; 30:178–85. [PubMed: 17416271]
54. Bicalho E, Setti JA, Macagnan J, Cano JL, Manfra EF. Immediate effects of a high-velocity spine manipulation in paraspinal muscles activity of nonspecific chronic low-back pain subjects. *Man Ther.* 2010; 15:469–75. [PubMed: 20447857]
55. Descarreaux M, Blouin JS, Drolet M, Papadimitriou S, Teasdale N. Efficacy of preventive spinal manipulation for chronic low-back pain and related disabilities: a preliminary study. *J Manipulative Physiol Ther.* 2004; 27:509–14. [PubMed: 15510094]
56. Geisser ME, Wiggert EA, Haig AJ, Colwell MO. A randomized, controlled trial of manual therapy and specific adjuvant exercise for chronic low back pain. *Clin J Pain.* 2005; 21:463–70. [PubMed: 16215330]
57. Cambron JA, Gudavalli MR, Hedeker D, et al. One-year follow-up of a randomized clinical trial comparing flexion distraction with an exercise program for chronic low-back pain. *J Altern Complement Med.* 2006; 12:659–68. [PubMed: 16970536]
58. Ferreira PH, Ferreira ML, Maher CG, Refshauge K, Herbert RD, Hodges PW. Changes in recruitment of transversus abdominis correlate with disability in people with chronic low back pain. *Br J Sports Med.* 2010; 44:1166–72. [PubMed: 19474006]
59. Licciardone JC, Kearns CM, Hodge LM, Bergamini MV. Associations of cytokine concentrations with key osteopathic lesions and clinical outcomes in patients with nonspecific chronic low back pain: results from the OSTEOPATHIC Trial. *J Am Osteopath Assoc.* 2012; 112:596–605. [PubMed: 22984233]
60. Licciardone JC, Kearns CM, Hodge LM, Minotti DE. Osteopathic manual treatment in patients with diabetes mellitus and comorbid chronic low back pain: subgroup results from the OSTEOPATHIC Trial. *J Am Osteopath Assoc.* 2013; 113:468–78. [PubMed: 23739758]
61. Licciardone JC, Kearns CM, Minotti DE. Outcomes of osteopathic manual treatment for chronic low back pain according to baseline pain severity: results from the OSTEOPATHIC Trial. *Man Ther.* 2013; 18:533–40. [PubMed: 23759340]
62. Kilpikoski S, Alèn M, Paatelma M, Simonen R, Heinonen A, Videman T. Outcome comparison among working adults with centralizing low back pain: secondary analysis of a randomized controlled trial with 1-year follow-up. *Adv Physiother.* 2009; 11:210–17.
63. Cecchi F, Negrini S, Pasquini G, et al. Predictors of functional outcome in patients with chronic low back pain undergoing back school, individual physiotherapy or spinal manipulation. *Eur J Phys Rehabil Med.* 2012; 48:371–8. [PubMed: 22569488]
64. UK BEAM Trial Team. United Kingdom back pain exercise and manipulation (UK BEAM) randomised trial: effectiveness of physical treatments for back pain in primary care. *BMJ.* 2004; 329:1377. [PubMed: 15556955]
65. Underwood MR, Morton V, Farrin A. Do baseline characteristics predict response to treatment for low back pain? Secondary analysis of the UK BEAM dataset [ISRCTN32683578]. *Rheumatology (Oxford).* 2007; 46:1297–302. [PubMed: 17522096]
66. Cook C, Learman K, Showalter C, Kabbaz V, O'Halloran B. Early use of thrust manipulation versus non-thrust manipulation: a randomized clinical trial. *Man Ther.* 2013; 18:191–8. [PubMed: 23040656]
67. Lewis JS, Hewitt JS, Billington L, Cole S, Byng J, Karayiannis S. A randomized clinical trial comparing two physiotherapy interventions for chronic low back pain. *Spine.* 2005; 30:711–21. [PubMed: 15803071]

68. Hurwitz EL, Morgenstern H, Harber P, et al. The effectiveness of physical modalities among patients with low back pain randomized to chiropractic care: findings from the UCLA low back pain study. *J Manipulative Physiol Ther.* 2002; 25:10–20. [PubMed: 11898014]
69. Bronfort G, Evans RL, Maiers M, Anderson AV. Spinal manipulation, epidural injections, and self-care for sciatica: a pilot study for a randomized clinical trial. *J Manipulative Physiol Ther.* 2004; 27:503–8. [PubMed: 15510093]
70. Apeldoorn AT, Ostelo RW, Van Helvoirt H, et al. A randomized controlled trial on the effectiveness of a classification-based system for subacute and chronic low back pain. *Spine.* 2012; 37:1347–56. [PubMed: 22333955]
71. Cairns MC, Foster NE, Wright C. Randomized controlled trial of specific spinal stabilization exercises and conventional physiotherapy for recurrent low back pain. *Spine.* 2006; 31:E670–81. [PubMed: 16946640]
72. Chown M, Whittamore L, Rush M, Allan S, Stott D, Archer M. A prospective study of patients with chronic back pain randomised to group exercise, physiotherapy or osteopathy. *Physiotherapy.* 2008; 94:21–8.
73. Cuesta-Vargas AI, Garcia-Romero JC, Arroyo-Morales M, Diego-Acosta AM, Daly DJ. Exercise, manual therapy, and education with or without high-intensity deep-water running for nonspecific chronic low back pain: a pragmatic randomized controlled trial. *Am J Phys Med Rehabil.* 2011; 90:526–34. quiz 535–8. [PubMed: 21765272]
74. Vibe Fersum K, O’Sullivan P, Skouen JS, Smith A, Kvale A. Efficacy of classification-based cognitive functional therapy in patients with non-specific chronic low back pain: a randomized controlled trial. *Eur J Pain.* 2013; 17:916–28. [PubMed: 23208945]
75. Frost H, Lamb SE, Doll HA, Carver PT, Stewart-Brown S. Randomised controlled trial of physiotherapy compared with advice for low back pain. *Br Med J.* 2004; 329:708–11. [PubMed: 15377573]
76. Goldby LJ, Moore AP, Doust J, Trew ME. A randomized controlled trial investigating the efficiency of musculoskeletal physiotherapy on chronic low back disorder. *Spine.* 2006; 31:1083–93. [PubMed: 16648741]
77. Hawk C, Long CR, Rowell RM, Gudavalli MR, Jedlicka J. A randomized trial investigating a chiropractic manual placebo: a novel design using standardized forces in the delivery of active and control treatments. *J Altern Complement Med.* 2005; 11:109–17. [PubMed: 15750369]
78. Hurwitz EL, Morgenstern H, Harber P, et al. A randomized trial of medical care with and without physical therapy and chiropractic care with and without physical modalities for patients with low back pain: 6-month follow-up outcomes from the UCLA low back pain study. *Spine.* 2002; 27:2193–204. [PubMed: 12394892]
79. Hsieh LL, Kuo CH, Lee LH, Yen AM, Chien KL, Chen TH. Treatment of low back pain by acupressure and physical therapy: randomised controlled trial. *BMJ.* 2006; 332:696–700. [PubMed: 16488895]
80. McMorland G, Suter E, Casha S, du Plessis SJ, Hurlbert RJ. Manipulation or microdisectomy for sciatica? A prospective randomized clinical study. *J Manipulative Physiol Ther.* 2010; 33:576–84. [PubMed: 21036279]
81. Mehling WE, Hamel KA, Acree M, Byl N, Hecht FM. Randomized, controlled trial of breath therapy for patients with chronic low-back pain. *Altern Ther Health Med.* 2005; 11:44–52. [PubMed: 16053121]
82. Mohseni-Bandpei MA, Critchley J, Staunton T, Richardson B. A prospective randomised controlled trial of spinal manipulation and ultrasound in the treatment of chronic low back pain. *Physiotherapy.* 2006; 92:34–42.
83. Moseley L. Combined physiotherapy and education is efficacious for chronic low back pain. *Aust J Physiother.* 2002; 48:297–302. [PubMed: 12443524]
84. Niemistö L, Lahtinen-Suopanki T, Rissanen P, Lindgren K, Sarna S, Hurri H. A randomized trial of combined manipulation, stabilizing exercises, and physician consultation compared to physician consultation alone for chronic low back pain. *Spine.* 2003; 28:2185–91. [PubMed: 14520029]
85. Riipinen M, Niemisto L, Lindgren KA, Hurri H. Psychosocial differences as predictors for recovery from chronic low back pain following manipulation, stabilizing exercises and physician

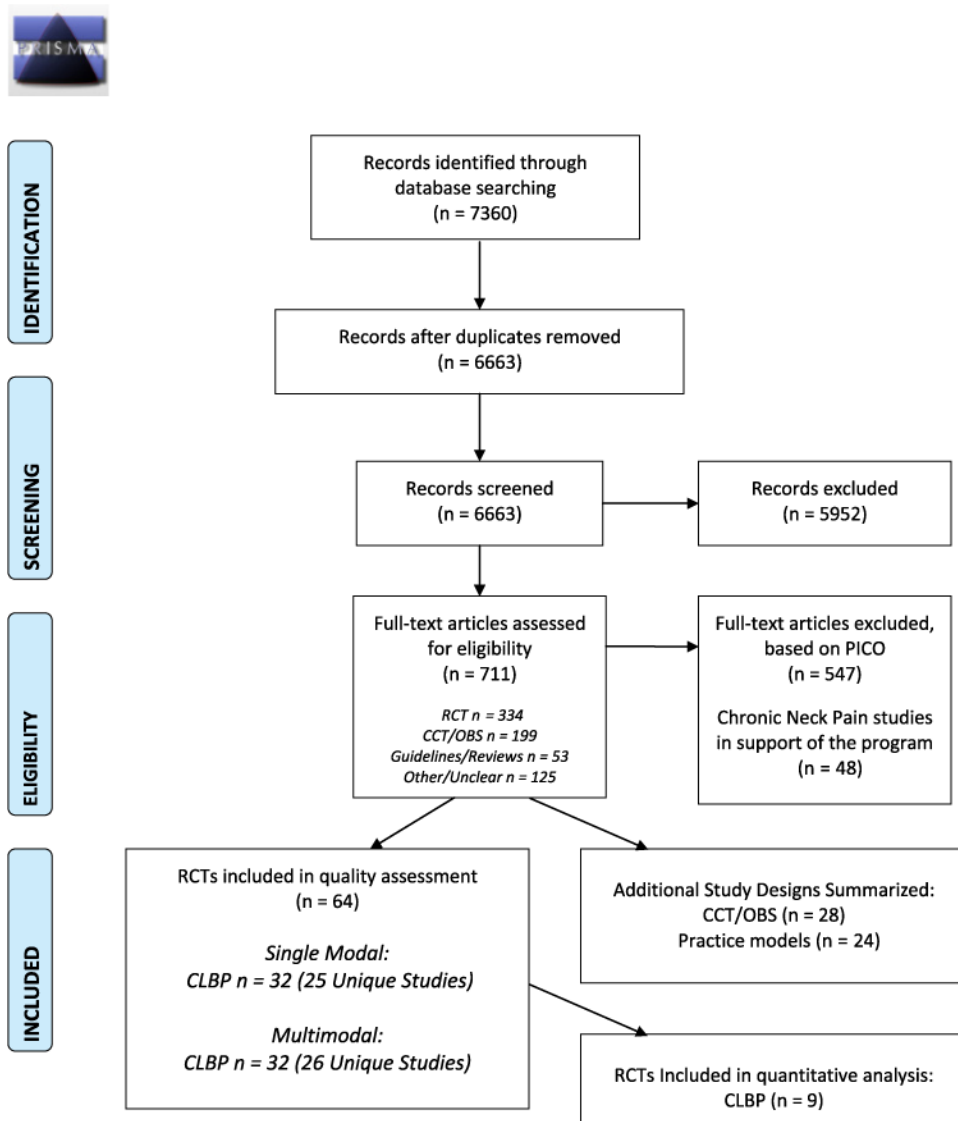
- consultation or physician consultation alone. *J Rehabil Med*. 2005; 37:152–8. [PubMed: 16040472]
86. Wilkey A, Gregory M, Byfield D, McCarthy PW. A comparison between chiropractic management and pain clinic management for chronic low-back pain in a national health service outpatient clinic. *J Altern Complement Med*. 2008; 14:465–73. [PubMed: 18564952]
 87. Skillgate E, Vingard E, Alfredsson L. Naprapathic manual therapy or evidence-based care for back and neck pain: a randomized, controlled trial. *Clin J Pain*. 2007; 23:431–9. [PubMed: 17515742]
 88. Casserley-Feeney SN, Daly L, Hurley DA. The access randomized clinical trial of public versus private physiotherapy for low back pain. *Spine*. 2012; 37:85–96. [PubMed: 21289590]
 89. Nagrale AV, Patil SP, Gandhi RA, Learman K. Effect of slump stretching versus lumbar mobilization with exercise in subjects with non-radicular low back pain: a randomized clinical trial. *J Man Manip Ther*. 2012; 20:35–42. [PubMed: 23372392]
 90. Senna MK, Machaly SA. Does maintained spinal manipulation therapy for chronic nonspecific low back pain result in better long-term outcome? *Spine*. 2011; 36:1427–37. [PubMed: 21245790]
 91. Cook CE, Showalter C, Kabbaz V, O'Halloran B. Can a within/between-session change in pain during reassessment predict outcome using a manual therapy intervention in patients with mechanical low back pain? *Man Ther*. 2012; 17:325–9. [PubMed: 22445052]
 92. Donaldson M, Learman K, O'Halloran B, Showalter C, Cook C. The role of patients' expectation of appropriate initial manual therapy treatment in outcomes for patients with low back pain. *J Manipulative Physiol Ther*. 2013; 36:276–83. [PubMed: 23829882]
 93. Goldstein MS, Morgenstern H, Hurwitz EL, Yu F. The impact of treatment confidence on pain and related disability among patients with low-back pain: results from the University of California, Los Angeles, low-back pain study. *Spine J*. 2002; 2:391–9. discussion 399–401. [PubMed: 14589256]
 94. Skillgate E, Bohman T, Holm LW, Vingard E, Alfredsson L. The long-term effects of naprapathic manual therapy on back and neck pain—results from a pragmatic randomized controlled trial. *BMC Musculoskelet Disord*. 2010; 11:26. [PubMed: 20137063]
 95. Yu F, Morgenstern H, Hurwitz E, Berlin TR. Use of a Markov transition model to analyse longitudinal low-back pain data. *Stat Methods Med Res*. 2003; 12:321–31. [PubMed: 12939099]
 96. Cook CE, Learman KE, O'Halloran BJ, et al. Which prognostic factors for low back pain are generic predictors of outcome across a range of recovery domains? *Phys Ther*. 2013; 93:32–40. [PubMed: 22879443]
 97. Rubinstein SM, Knol DL, Leboeuf-Yde C, van Tulder MW. Benign adverse events following chiropractic care for neck pain are associated with worse short-term outcomes but not worse outcomes at three months. *Spine*. 2008; 33:E950–6. [PubMed: 19050572]
 98. Rubinstein SM, Leboeuf-Yde C, de Koekkoek TE, Pfeifle CE, Van Tulder MW. Predictors of adverse events following chiropractic care for patients with neck pain. *J Manipulative Physiol Ther*. 2008; 31:94–103. [PubMed: 18328935]
 99. Rubinstein SM, Leboeuf-Yde C, Knol DL, de Koekkoek TE, Pfeifle CE, van Tulder MW. The benefits outweigh the risks for patients undergoing chiropractic care for neck pain: a prospective, multicenter, cohort study. *J Manipulative Physiol Ther*. 2007; 30:408–18. [PubMed: 17693331]
 100. Airaksinen O, Brox JI, Cedraschi C, et al. Chapter 4. European guidelines for the management of chronic nonspecific low back pain. *Eur Spine J*. 2006; 15(Suppl. 2):S192–300. [PubMed: 16550448]
 101. Delitto A, George SZ, Van Dillen LR, et al. Low back pain. *J Orthop Sports Phys Ther*. 2012; 42:A1–57.
 102. Cowan, P., American Chronic Pain Association. Practice guidelines for low back pain: consumer's guide. American Chronic Pain Association; 2008.
 103. Koes BW, van Tulder M, Lin CW, Macedo LG, McAuley J, Maher C. An updated overview of clinical guidelines for the management of non-specific low back pain in primary care. *Eur Spine J*. 2010; 19:2075–94. [PubMed: 20602122]
 104. Pillastrini P, Gardenghi I, Bonetti F, et al. An updated overview of clinical guidelines for chronic low back pain management in primary care. *Joint Bone Spine*. 2012; 79:176–85. [PubMed: 21565540]

105. Cheng JS, Lee MJ, Massicotte E, et al. Clinical guidelines and payer policies on fusion for the treatment of chronic low back pain. *Spine*. 2011; 36(Suppl. 21):S144–63. [PubMed: 21952186]
106. Rubinstein SM, van Middelkoop M, Assendelft WJ, de Boer MR, van Tulder MW. Spinal manipulative therapy for chronic low-back pain: an update of a Cochrane review. *Spine*. 2011; 36:E825–46. [PubMed: 21593658]
107. Orrock PJ, Myers SP. Osteopathic intervention in chronic non-specific low back pain: a systematic review. *BMC Musculoskelet Disord*. 2013; 14:129. [PubMed: 23570655]
108. Ladeira CE. Evidence based practice guidelines for management of low back pain: physical therapy implications. *Rev Bras Fisioter*. 2011; 15:190–9. [PubMed: 21829982]
109. Vellucci R. Heterogeneity of chronic pain. *Clin Drug Investig*. 2012; 32(Suppl. 1):3–10.

```
(Manipulation Osteopathic OR Chiropractic Manipulation OR Spinal Manipulation OR Musculoskeletal
Manipulation OR Osteopathic Medicine OR Chiropractic OR manipulation orthopedic OR mobiliz* OR
Manipulate OR manual therapy Or "Spinal Manipulative Therapy" OR SMT) and (back injury OR neck pain
OR cervical pain OR neck ache OR low back pain OR low back ache OR spinal OR cervical vertebrae OR
coccydynia OR sciatica OR spondylosis OR lumbago OR whiplash OR lumbar pain OR lumbar OR sacral
OR neck pain OR neck pain* OR low* backache* OR back ache* OR neck pain* OR neck ache* OR
cervical pain* OR cervical vertebra* OR low* back pain OR back injur* OR neck injury OR neck injur* OR
neck ache* OR neckache* OR neck pain* OR cervical* OR sciatic*) AND ( ( Clinical Trial[ptyp] OR
Pragmatic Clinical Trial[ptyp] OR Comparative Study[ptyp] OR Controlled Clinical Trial[ptyp] OR
Evaluation Studies[ptyp] OR Multicenter Study[ptyp] OR Observational Study[ptyp] OR Randomized
Controlled Trial[ptyp] OR Research Support, N I H, Extramural[ptyp] OR Research Support, Non U S
Gov't[ptyp] OR Research Support, U S Gov't, Non P H S[ptyp] OR Research Support, U S Gov't, P H
S[ptyp] OR Research Support, U.S. Government[ptyp] OR systematic[sb] OR Practice Guideline[ptyp] OR
Meta-Analysis[ptyp] OR Guideline[ptyp] OR Research Support, N I H, Intramural[ptyp] OR Validation
Studies[ptyp] ) AND ( "2000/01/01"[Pdat] : "2017/03/14"[Pdat] ) AND Humans[Mesh] AND English[lang]
AND adult[MeSH])
```

Fig. 1.
Search strategy.

Note: Figure 1 addresses search strategy for low back pain as well as neck pain studies. The findings of neck pain studies are not reported here. Because the Center of Excellence for Research in CAM (CERC) project was focused on both chronic neck pain as well as chronic low back pain, the search was executed to meet both needs together to streamline the effort.



Abbreviations: CLBP – Chronic Low Back Pain. RCT – Randomized Controlled Trial. CCT – Controlled Clinical Trial. OBS – Observational studies.

Fig. 2. Flow of included studies. CCT, controlled clinical trial; CLBP, chronic low back pain; OBS, observational studies; RCT, randomized controlled trial.

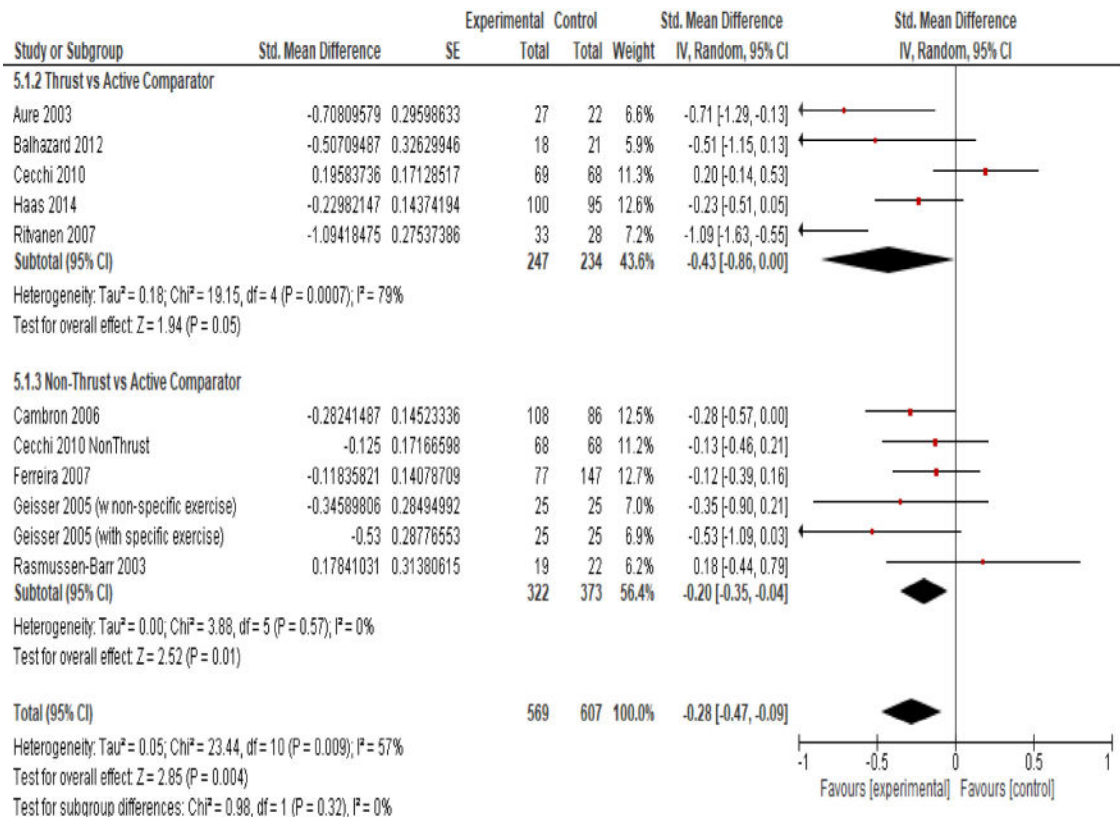


Fig. 3.
Reduction in pain.

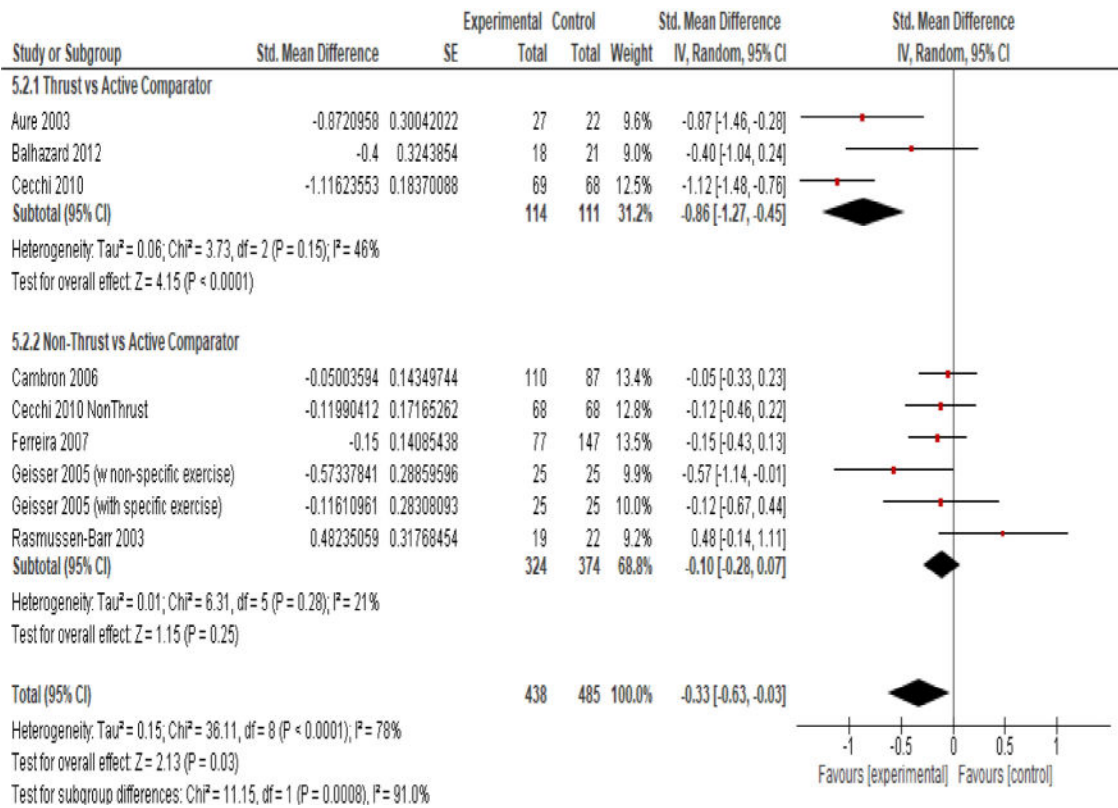


Fig. 4.
Reduction in disability.

Table 1

Eligibility criteria

Eligibility criteria	Reference standard definition	Scope driven evidence-informed definition
Population “chronic” low back pain	According to the Pain Management Task Force [6], chronic pain can be described as ongoing or recurrent pain, lasting beyond the usual course of acute illness or injury or more than 3–6 mo, and which adversely affects the individual’s well-being. In 2014, the National Institutes of Health Task Force on Research Standards for Low Back [22] recommended defining chronicity of pain as: “(1) How long has back pain been an ongoing problem for you? (2) How often has low-back pain been an ongoing problem for you over the past 6 months? A response of greater than 3 months to question 1, and a response of ‘at least half the days in the past 6 months’ to question 2 would define chronic low back pain.”	The majority of studies defined chronicity based on the duration of pain symptoms for 12 wk or more. Therefore, a similar definition of chronicity (> 12 wk) was adopted, and studies were categorized as those patients with >12 wk, a mean duration of 6 mo, and those with >12-mo pain duration.
Population “non-specific”	Non-specific low back pain is defined as pain not attributable to a recognizable, known specific pathology [23] (eg, infection, tumor, osteoporosis, fracture, structural deformity, rheumatoid arthritis, radicular syndrome). Therefore, the etiology of the pain is often unknown and it is not categorized with a major pathogenic etiology.	The existing literature does not use standard terminology to report “non-specific” chronic pain. To guide the eligibility of studies, the following terms were specified to be <i>outside</i> the scope of “non-specific”: specific conditions, ie, cancer, rheumatoid arthritis, fibromyalgia, spondylolisthesis (displacement of vertebra) and spinal stenosis (narrowing of spinal canal), pregnancy-related pain, and ankylosing spondylitis. Consensus among the internal steering committee specified the following exemptions: osteoarthritis, sciatica, radiculopathy, low back pain “of mechanical origin,” pain associated with spondylosis, sacroiliac joint syndrome, trauma-induced, disc herniation, pelvic anteversion, and “occupational” low back pain.
Interventions mobilization or manipulation	Bronfort et al. defined <i>mobilization</i> as “the application of manual force to the spinal joints within the passive range of joint motion that does not involve a thrust (p. 336)” [13]. The RAND report by Coulter et al. defines <i>mobilization</i> as “controlled, judiciously applied force of low velocity and variable amplitude directed to spinal joint segment(s)” (p. xi) [24]. Spinal manipulation is defined as “the application of high-velocity, low amplitude manual thrusts to the spinal joints slightly beyond the passive range of joint motion,” by Bronfort et al. [13], where the RAND report by Coulter et al. defines <i>spinal manipulation</i> as “a controlled, judiciously applied dynamic thrust adjustment, that may include combined extension and rotation of the upper cervical spinal segments, or low-velocity and low-amplitude force with the use of a short or long lever directed to spinal joint segments within patient tolerance” (p. xi) [24].	The interventions in this systematic review consist of manipulation or mobilization in chiropractic settings and other non-invasive therapies including osteopathy, manual therapy and physical therapy. For simplicity, interventions were categorized into thrust and non-thrust interventions. When combined with other active interventions, they were labeled as “programs.”
Control/comparator(s)	This review focused on any intervention being compared with mobilization or manipulation, including any active therapy (ie, exercise, physical therapy), manipulation (thrust), mobilization (non-thrust), sham, no treatment, usual, or standard care.	For the purpose of analysis, controls or comparisons were categorized as active, sham, or no treatment, or as direct comparisons between various thrust and non-thrust interventions.
Outcome(s)	Although pain reduction was predefined as the primary outcome of interest, the most commonly reported pain-related, patient-reported outcomes that affect health status were determined through a scoping review and thus pooled to determine which could be assessed.	Patient-reported outcomes that the majority of studies include to date: pain intensity or severity (as measured by a VAS or NRS) disability (as measured by the RMDQ, HRQoL) as measured by the SF-36 or safety.
Study design(s)	All study designs were considered for the purposes of scoping the literature.	Randomized controlled trials were included in the systematic review and meta-analysis. Other study designs were queried when gaps were present (ie, safety).

HRQoL, health-related quality of life; NRS, numeric rating scale; RMDQ, Roland-Morris Disability Questionnaire; SF-36, Short Form 36; VAS, visual analog scale.

Table 2

Quality assessment of included studies

SIGN criteria	Single modal studies				Multimodal studies			
	Poor	Adequate	Well	NA	Poor	Adequate	Well	NA
Appropriate and clearly focused question	—	64% (16)	36% (9)	—	—	76.9% (20)	23.1% (6)	—
Randomization	24% (6)	52% (13)	24% (6)	—	7.7% (2)	65.4% (17)	26.9% (7)	—
Allocation concealment	28% (7)	56% (14)	16% (4)	—	30.8% (8)	61.5% (16)	7.7% (2)	—
Blinding	28% (7)	60% (15)	12% (3)	—	30.8% (8)	69.2% (18)	—	—
Percentage of dropouts	20% (5)	12% (3)	68% (17)	—	23.1% (6)	19.2% (5)	57.7% (15)	—
Baseline similarities	4% (1)	28% (7)	68% (17)	—	3.8% (1)	30.8% (8)	65.4% (17)	—
Group differences	36% (9)	56% (14)	8% (2)	—	46.2% (12)	50% (13)	3.8% (1)	—
Outcome reliability/validity	—	20% (5)	80% (20)	—	3.8% (1)	42.3% (11)	53.9% (14)	—
Intention-to-treat analyses	36% (9)	12% (3)	52% (13)	—	26.9% (7)	26.9% (7)	46.2% (12)	—
Multisite similarities	28% (7)	4% (1)	—	68% (17)	46.2% (12)	—	3.8% (1)	50% (13)
EVAT criteria	Poor	Adequate	Well	NA	Poor	Adequate	Well	NA
Recruitment	16% (4)	76% (19)	8% (2)	—	11.5% (3)	84.6% (22)	3.8% (1)	—
Participation	24% (6)	52% (13)	24% (6)	—	23.1% (6)	53.8% (14)	23.1% (6)	—
Model validity	36% (9)	44% (11)	4% (1)	16% (4)	50% (13)	19.2% (5)	11.6% (3)	19.2% (5)

EVAT: External Validity Assessment Tool; NA, not applicable; SIGN, Scottish Intercollegiate Guidelines Network.