

UCLA

UCLA Previously Published Works

Title

Utilization of a novel digital measurement tool for quantitative assessment of upper extremity motor dexterity: a controlled pilot study

Permalink

<https://escholarship.org/uc/item/4cs3z1q7>

Journal

Journal of NeuroEngineering and Rehabilitation, 11(1)

ISSN

1743-0003

Authors

Getachew, Ruth

Lee, Sunghoon I

Kimball, Jon A

et al.

Publication Date

2014-12-01

DOI

10.1186/1743-0003-11-121

Copyright Information

This work is made available under the terms of a Creative Commons Attribution License, available at <https://creativecommons.org/licenses/by/4.0/>

Peer reviewed

RESEARCH

Open Access

Utilization of a novel digital measurement tool for quantitative assessment of upper extremity motor dexterity: a controlled pilot study

Ruth Getachew^{1,2,5†}, Sunghoon I Lee^{3†}, Jon A Kimball^{1,2,5}, Andrew Y Yew^{1,2,5}, Derek S Lu^{1,2,5}, Charles H Li^{1,2,5}, Jordan H Garst^{1,2,5}, Nima Ghalehsari^{1,2,5}, Brian H Paak^{1,2,5}, Mehrdad Razaghy^{1,2,5}, Marie Espinal^{1,2,5}, Arsha Ostowari^{1,2,5}, Amir A Ghavamrezai^{1,2,5}, Sahar Pourtaheri^{1,2,5}, Irene Wu⁴, Majid Sarrafzadeh³ and Daniel C Lu^{1,2,5,6*}

Abstract

Background: The current methods of assessing motor function rely primarily on the clinician's judgment of the patient's physical examination and the patient's self-administered surveys. Recently, computerized handgrip tools have been designed as an objective method to quantify upper-extremity motor function. This pilot study explores the use of the MediSens handgrip as a potential clinical tool for objectively assessing the motor function of the hand.

Methods: Eleven patients with cervical spondylotic myelopathy (CSM) were followed for three months. Eighteen age-matched healthy participants were followed for two months. The neuromotor function and the patient-perceived motor function of these patients were assessed with the MediSens device and the Oswestry Disability Index respectively. The MediSens device utilized a target tracking test to investigate the neuromotor capacity of the participants. The mean absolute error (MAE) between the target curve and the curve tracing achieved by the participants was used as the assessment metric. The patients' adjusted MediSens MAE scores were then compared to the controls. The CSM patients were further classified as either "functional" or "nonfunctional" in order to validate the system's responsiveness. Finally, the correlation between the MediSens MAE score and the ODI score was investigated.

Results: The control participants had lower MediSens MAE scores of $8.09\% \pm 1.60\%$, while the cervical spinal disorder patients had greater MediSens MAE scores of $11.24\% \pm 6.29\%$. Following surgery, the functional CSM patients had an average MediSens MAE score of $7.13\% \pm 1.60\%$, while the nonfunctional CSM patients had an average score of $12.41\% \pm 6.32\%$. The MediSens MAE and the ODI scores showed a statistically significant correlation ($r = -0.341$, $p < 1.14 \times 10^{-5}$). A Bland-Altman plot was then used to validate the agreement between the two scores. Furthermore, the percentage improvement of the the two scores after receiving the surgical intervention showed a significant correlation ($r = -0.723$, $p < 0.04$).

Conclusions: The MediSens handgrip device is capable of identifying patients with impaired motor function of the hand. The MediSens handgrip scores correlate with the ODI scores and may serve as an objective alternative for assessing motor function of the hand.

Keywords: Cervical spondylosis, Handgrip, Motor deficit, Oswestry disability index

*Correspondence: dclu@mednet.ucla.edu

†Equal contributors

¹Neuroplasticity and Repair Laboratory, UCLA, Los Angeles, USA

²Neuromotor Recovery and Rehabilitation Center, UCLA, Los Angeles, USA

Full list of author information is available at the end of the article

Introduction

Cervical spondylotic myelopathy (CSM) is an age-related form of spinal degeneration. It is the most common cause of spinal pathology in patients over the age of 50 [1-3]. Most individuals with CSM have radiographic evidence of cervical spine degenerative changes by the age of 30. The incidence of CSM increases until the age of 60 [4,5]. As the elderly population grows, CSM is expected to become an increasingly common problem facing patients and the healthcare system [6,7]. CSM is known to impair the neuromotor function of the hand, thus impairing the performance of many daily activities. CSM can cause the impairment of both the upper and lower extremities. The symptoms commonly include motor weakness, pain, and numbness. Consequently, CSM can have a serious impact on the quality of life of the elderly population. For this reason, timely diagnosis is critical [5-7].

The current methods for the clinical evaluation for neuromotor deficits rely on scoring observable changes in neuromuscular function [2,8]. These physical exam maneuvers include the Barre test, the Hoffmann test, the pronator drift test, the hand withdrawal reflex, and the deep tendon reflexes [9,10]. The American Spinal Injury Association (ASIA) motor score is another method of determining the neuromotor function of patients, as it assesses the strength of selected muscles against resistance. Unfortunately, the aforementioned physical exam maneuvers are limited by physician bias and by the subjective nature of their scoring systems [2,11]. Furthermore, the negative predictive value (the number of patients who have a negative test result that is consistent with a negative history of a given diagnosis) of these tests is low, making it difficult to rule out neuromotor deficits based solely on these methods [11]. Radiographic imaging combined with clinical exam findings have become the standard of care in diagnosing spinal cord pathology. However, radiographic imaging is expensive and often does not correlate with functional impairment. Other scoring systems based on activities of daily living have become widely used in assessing CSM patients. These scoring systems include the Japanese-Orthopaedic-Association-Score (JOA-Score) [12] and the Oswestry Disability Index (ODI) [13]. However, these methods are not sensitive to small changes in neuromotor function [14]. Some of these methods, furthermore, are known to be affected by response shift, which represents a change in the standard of perceived health-related quality of life after receiving medical treatment [15].

Systems that objectively measure neuromuscular function, such as the MediSens system, have gained popularity for assessing neurodegenerative disorders [11,16]. These systems require the patient to perform "tracking maneuvers" by varying their handgrip strength to follow a target curve on a computer. The goal of the test is to

minimize the error between the target and the patient's tracking response. Handgrip motor function tests were performed in stroke and Parkinson's disease (PD) patients as a method of assessing their function before and after physical rehabilitation [17-19]. Recent studies have identified the sinusoidal curve tracking test as the most useful tracking performance test for patients with neurodegenerative disorders [20]. Studies specific to the sinusoidal curve have also demonstrated its ability to detect performance deficits in the unaffected side of hemi-paraplegic patients when compared to their healthy counterparts [21,22]. To the best of our knowledge, handgrip tracking devices have not been used to compare the preoperative and the postoperative handgrip performance in patients with CSM.

In this paper, we introduce the MediSens handgrip device as an objective test to assess the neuromotor function. We validate its clinical usefulness by examining the ability of the device in quantifying the neuromotor levels of CSM patients and healthy participants, by examining the capacity of the MediSens handgrip to track changes in hand performance of CSM patients after receiving cervical decompression surgery (i.e., system's responsiveness), and by investigating its correlation to the patients' perceived motor deficits in performing daily activities (i.e., the ODI).

Materials and methods

Participants

Eleven adult research participants who were scheduled for elective cervical decompression surgery by DCL at the UCLA Spine Center were recruited for this study. The inclusion criteria included age (19-89 years old) and no prior history of cervical pathology and/or neuromuscular impairments. The mean age of the eleven study participants was 58 (39-86). The mean age of the eighteen control subjects was 63 (45-85). Informed consent was obtained from all participants. A medical chart review was performed and all eleven patients were noted to have documented symptoms of myelopathy manifested by upper extremity paresthesia and radiculopathy. A review of preoperative imaging was performed which demonstrated radiographic evidence of cervical spondylotic disease, including spinal canal stenosis, osteophytic disease, facet arthropathy, and ligamentous hypertrophy. This study was reviewed and approved by the UCLA Institutional Review Board.

MediSens handgrip device

Each participant was assessed for neuromotor function of the clinically affected hand with the MediSens system. This handgrip device delivers sensory information to a computer which enables visualization of the patient's handgrip performance and collects sensory input data.

The MediSens handgrip device in Figure 1 has three components: the handle, the springs, and a displacement sensor. The main body is composed of three rods and a bottom compartment. The handle is connected to the main body by three springs. These springs create resistance to grasping motions. Five different springs with the following spring constants were used to calibrate the MediSens device with the patient's hand grip strength: S1 (0.38 lbs/inch), S2 (0.88 lbs/inch), S3 (1.94 lbs/inch), S4 (5.10 lbs/inch), and S5 (10.70 lbs/inch).

Test administrators were not blind to the treatment group. As an attempt to maintain continuity with the patient and to reduce performance variability due to changes in test administrators, each test administrator was responsible for testing the same study participants. Testing methods were the same for both the control and the treatment groups.

Testing procedure

In order to calibrate the MediSens handgrip device with the subjects' grip strength, a set of three springs were chosen to provide resistance equal to 70-80% of the subject's maximum voluntary contraction (MVC). The tracking tests, as shown in Figure 2, were normalized to the individual's MVC such that the maximum magnitude of the tracking target is equal to the measured MVC.

The sinusoidal target moved towards the left of the screen at a constant speed. The dotted circle in Figure 2 moved in the y-axis according to the grip force exerted by the subject. The software also displayed the history of the subject's performance. The objective of the test was to minimize the errors between the target waveform and the dotted circle. At every clinical visit, participants performed three 45-second tracking tests. The

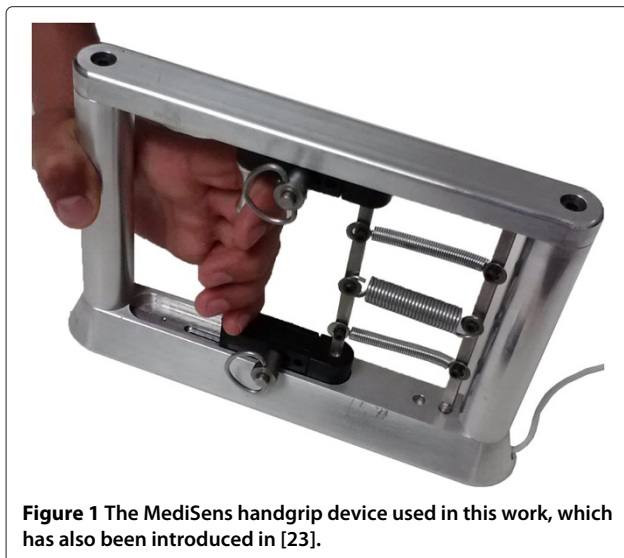


Figure 1 The MediSens handgrip device used in this work, which has also been introduced in [23].

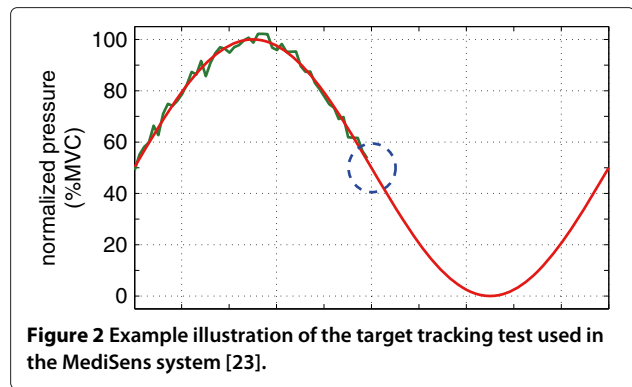


Figure 2 Example illustration of the target tracking test used in the MediSens system [23].

three MediSens mean absolute error (MAE) scores from a given test date were averaged to represent the overall performance for that clinical visit.

Longitudinal tracking of the patients' hand motor function was performed an hour prior to surgery and again at 24 hours, 48 hours, 2 weeks, and 3 months postoperatively. However, only the preoperative and 3-month postoperative data points were used in this study, due to the results of previous studies that did not demonstrate significant improvement in neuromotor function until 3-4 months postoperatively [15]. During the postoperative period, patients were given a cervical collar and were prescribed hand physical therapy as needed. Testing for controls was conducted at 0 weeks, 2-3 weeks and 4-6 weeks.

Analysis

The MediSens MAE score was used to quantify motor function. It was calculated by averaging the distance between the target curve and the curve tracing achieved by a patient. The sinusoidal test was normalized to the MVC of the subject. Thus, the unit of the MediSens MAE score is % MVC.

In order to track the change in motor function secondary to surgical intervention, a percentage improvement (% Improvement) of the MediSens MAE score was computed using $(MAE_{post} - MAE_{pre})/MAE_{pre}$.

ODI surveys

The ODI survey consists of ten questions regarding the patient's ability to perform the activities of daily living [24,25]. The answer choices describe a progressively increasing level of neuromotor impairment that correlates with a higher numeric score. The scores on the 10 questions were averaged to create a numeric value that indicates the patient's perceived level of motor function.

ODI scores were collected from CSM patients preoperatively and at three months postoperatively. Patients with a three month postoperative ODI score ≤ 0.6 were categorized as "functional", while patients with three month

postoperative ODI score > 0.6 were categorized as “non-functional” [13]. This threshold-based categorization is an approximated representation of a patient group (i.e., ≤ 0.6) that is relatively functional in performing daily activities compared to the rest of the patients (i.e., > 0.6) [13].

Written informed consent was obtained from all patients for publication of this study. A copy of the written consents are available for review by the Editor-in-Chief of this journal.

The study was performed in accordance with the Declaration of Helsinki, the protocol was approved by the Human Research Protection Program at UCLA and all patients or their carers gave informed consent. This research was approved by the University of California, Los Angeles, Institutional Review Board (IRB #: 12-000009-CR-00002).

Results

Table 1 describes the demographics of the current study. 18 control participants and 11 surgical patients were enrolled, with mean ages of 63 and 58 years respectively.

The MediSens MAE scores of CSM patients and control subjects

Each participant performed the tracking test three times per clinical visit. The average MediSens MAE score of the three tests was used to quantify the hand neuromuscular function for that test date. Table 2 summarizes the average scores of the control participants at 0 weeks and at the two-month mark. It also summarizes the average MediSens MAE scores of the CSM patients preoperatively and at three months postoperatively. The table further reports the average MediSens MAE scores of the postoperative CSM patients divided into functional or nonfunctional groups as described in Section ‘ODI surveys’.

The average MediSens MAE score for the control participants was 8.09 ± 1.60 at week 0 and was 6.21 ± 1.51 at the two-month follow-up. For the CSM patients, the preoperative and the three months postoperative tests revealed average MediSens MAE scores of 11.24 ± 6.29 and 8.71 ± 4.17 respectively. The CSM patients were catego-

Table 2 A summary of the MediSens MAE scores of control subjects and CSM patients

		Mean MediSens MAE ± SD
Control	First Test	8.09 ± 1.60
	Last Test	6.21 ± 1.51
CSM Patients	Preoperative test	11.24 ± 6.29
	3 month postoperative test (aggregate)	8.71 ± 4.17
	3 month postoperative test (functional group)	7.13 ± 1.60
	3 month postoperative test (nonfunctional group)	12.41 ± 6.32

rized into functional and nonfunctional groups based on the assessment method of Fairbanks et al. [13]. The functional group demonstrated a postoperative MediSens MAE score of 7.13 ± 1.60 , while the nonfunctional group showed a score of 12.41 ± 6.32 .

The percentage change between the first and the last test sessions was quantified to further demonstrate the change in handgrip performance. Control participants improved $17\% \pm 15\%$ after two months. This demonstrates a general pattern of motor learning. In contrast, CSM patients improved $21\% \pm 27\%$ during the three months following surgery. This shows that the motor function of CSM patients improved more than the expected motor learning. This finding suggests a benefit to surgical intervention. Interestingly, in Table 3, the functional group improved by $30\% \pm 18\%$, while nonfunctional group members declined in performance by $11\% \pm 25\%$. Possible causes for the discrepancy in performance between the functional and nonfunctional groups are explored in the discussion.

Correlation to existing methods

The ODI surveys were administered at each MediSens handgrip testing and compared to the MediSens MAE scores. This tested our hypothesis that there exists a correlation between ODI scores and handgrip performance. It also tested our hypothesis that a postoperative improvement in ODI correlates with an objective improvement in handgrip neuromuscular function as demonstrated

Table 1 Demographic information about the participants

	Control (n = 18)	CSM Patients (n = 11)
Age range	45-85	39-86
Mean age	63 ± 3.38	58 ± 3.20
Mean weight	149 ± 7.93	166 ± 9.84
Mean gender	33%	63%
Cervical neck injury	-	1 (9%)
Cervical neck degenerative symptoms	-	10 (91%)

Table 3 Percentage change in the MediSens MAE score between initial and final time points

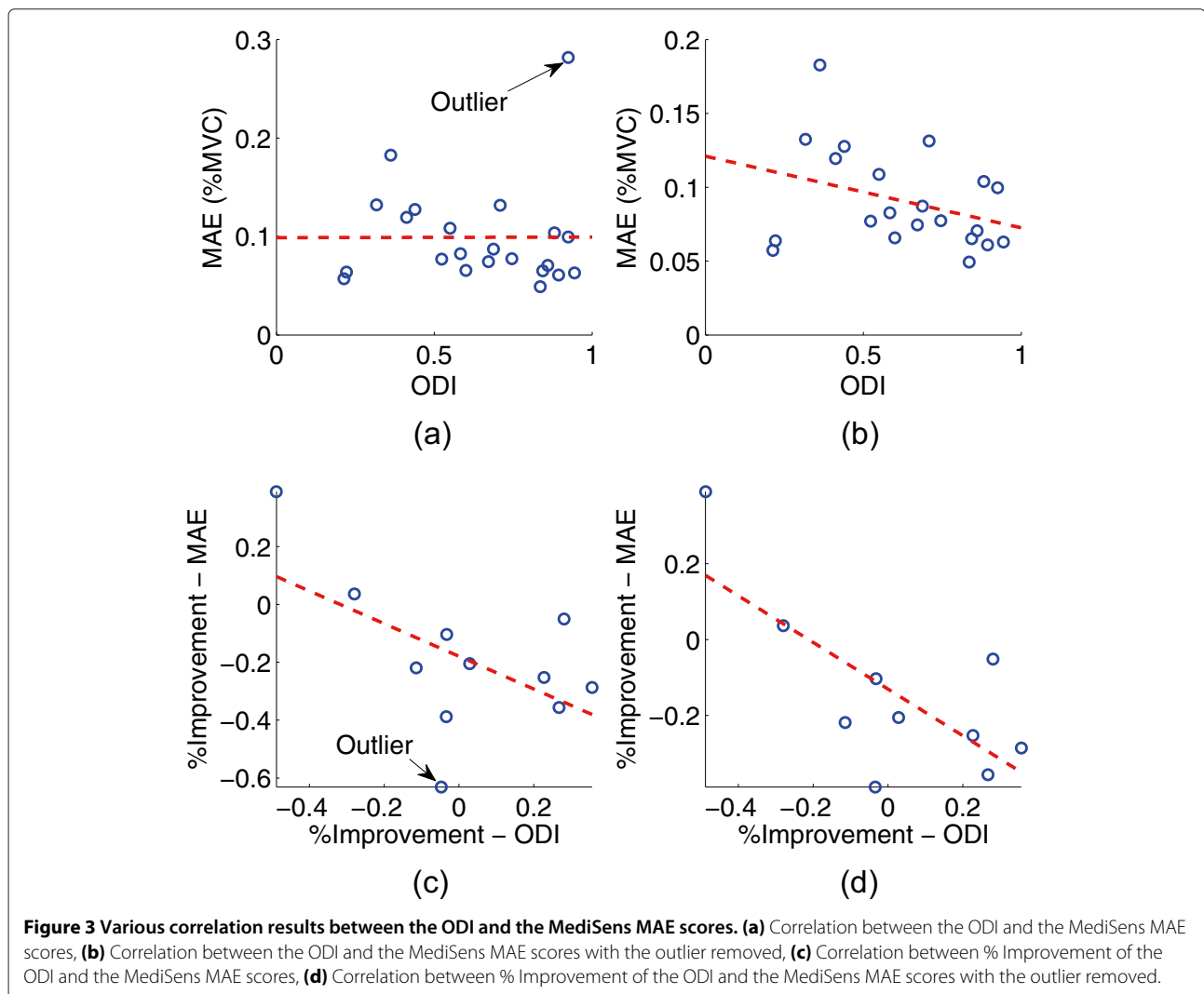
	% Improvement MediSens MAE	T-test vs. control
Control	$17\% \pm 15\%$	-
CSM Patients - Aggregated	$21\% \pm 27\%$	$p < 0.88$
CSM Patients - Functional	$30\% \pm 18\%$	$p < 0.09$
CSM Patients - Nonfunctional	$-11\% \pm 25\%$	$p < 0.16$

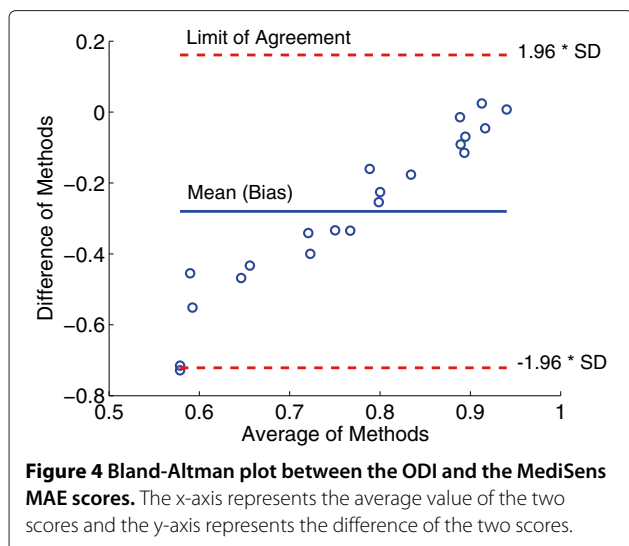
by the MediSens device. The Pearson product-moment correlation coefficient (or Pearson's r) was used to quantify the level of correlation [26-28]. Figure 3(a) demonstrates the pre and postoperative correlation between the MediSens MAE and the ODI scores of the surgical patients ($r = 0.0025$, $p < 0.00806$). The Cook's distance (d_i) of each point was used to identify any possible outliers, which was calculated using the following equation:

$$d_i = \frac{\sum_{j=1}^n (\hat{MAE}_j - \hat{MAE}_{j-i})^2}{(k+1)s^2}, i = 1, \dots, n.$$

where n is the total number of data points, \hat{MAE}_j represents the regression estimate of the MediSens MAE score at point j , and \hat{MAE}_{j-i} represents the regression estimate of the MediSens MAE score at point j when the data point i is removed. Furthermore, s represents the estimated root

mean square error. A data point is labeled as an outlier if $d_i \geq \frac{4}{n-(k+1)}$ where k is the number of fitted parameters in our linear model (i.e., $k = 1$). As a consequence, one data point, which is labeled in Figure 3(a), has been verified as an outlier. Figure 3(b) represents the correlation between the MediSens MAE and ODI scores when the outlier is removed. Both the r and p -value have been significantly improved ($r = -0.341$, $p < 1.14 \times 10^{-5}$). A Bland-Altman plot was constructed in order to verify the agreement between the MediSens MAE and the ODI scores as shown in Figure 4. The mean difference was -0.26 (95% C.I. of -0.36 and -0.15), the upper limit of agreement was 0.22 , and the lower limit of agreement was -0.73 . Percentage improvement in the ODI scores also displayed a strong correlation to the percentage improvement in the MediSens MAE scores as shown in Figure 3(c) ($r = -0.553$, $p < 0.0300$). The predefined outlier was removed and the result is illustrated in Figure 3(d).





The correlation coefficient was significantly improved to $r = -0.723$, $p < 0.0402$. These results are also summarized in Table 4.

Discussion

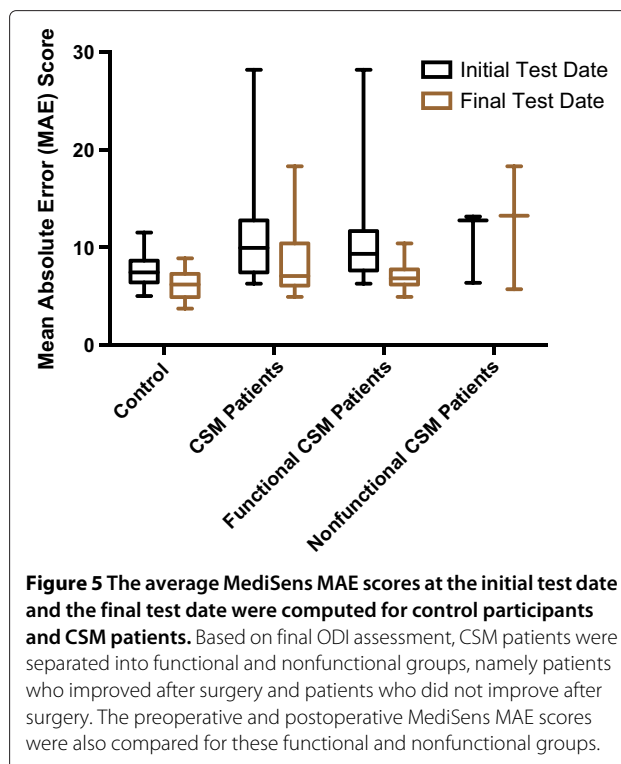
Method of quantifying MediSens handgrip performance

The MediSens MAE scores demonstrated a significant difference between the control participants and the preoperative CSM patients. Table 2 shows that the control participants had an average MediSens MAE score of 8.09 ± 1.60 at the initial attempt, whereas the preoperative CSM patients had an average score 11.24 ± 6.29 . This data suggests that, on average, the control participants initially made fewer errors during tracking tests compared to the CSM patients. Furthermore, the variance in the MediSens MAE scores was significantly lower in the control subjects (1.60) than the CSM patients (6.29). This large variability in the baseline MediSens MAE scores is consistent with reports by Manion et al., who demonstrated the presence of high variability in the baseline ODI scores between the control and the patients [25].

Table 2 and Figure 5 show that CSM patients' average MediSens MAE scores improved to 8.71 ± 4.17 after surgery. The patients were further categorized into the

Table 4 Correlation between the ODI and the MediSens MAE scores

	<i>r</i>	<i>p</i> -value
MediSens MAE vs. ODI (with outlier)	0.00250	0.008
MediSens MAE vs. ODI (without outlier)	-0.341	1.14×10^{-5}
% Improvement MediSens MAE vs. ODI (with outlier)	-0.553	0.03
% Improvement MediSens MAE vs. ODI (without outlier)	-0.723	0.04

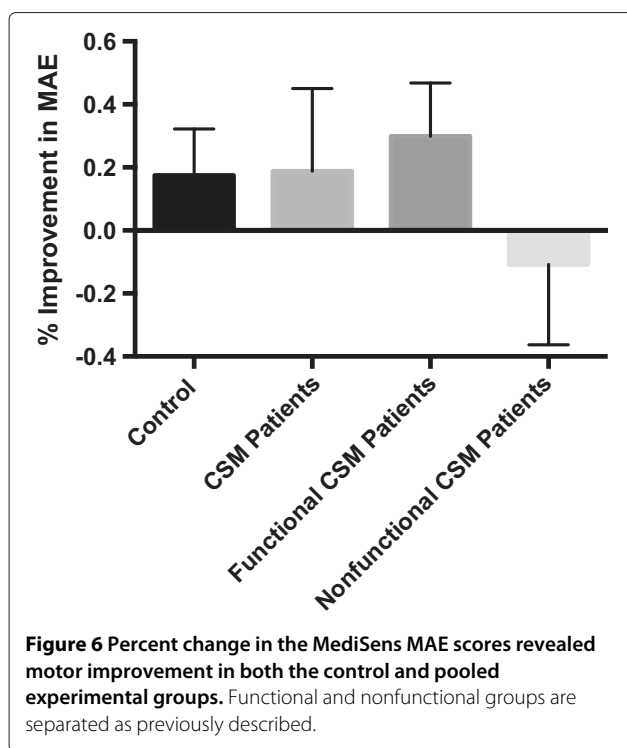


functional and nonfunctional groups according to their postoperative ODI scores, as discussed in Section 'ODI surveys'. The functional group demonstrated superior postoperative handgrip performance and less variability in the average MediSens MAE score (7.13 ± 1.60), compared to the nonfunctional group (12.41 ± 6.32). After further reviewing the past medical history of patients in the nonfunctional group, several factors were noted to be contributing to their lack of postoperative improvement. These factors included non-compliance with postoperative exercise restrictions and thrombophlebitis.

Patient progress assessment with MediSens data

The MediSens handgrip tracking tests were performed preoperatively and the patients were followed for three months postoperatively. The patients were expected to improve their MediSens MAE scores during this time period secondary to motor learning. This is apparent in Table 2 and Figure 6, where both the control group and the surgical group improved in their average MediSens MAE scores throughout the course of the study.

Unfortunately, motor learning is an unavoidable confounding factor in tracking tests. We confirmed this learning effect in healthy subjects, which resulted in a slight improvement in the MediSens MAE score (p -value < 0.0002) as summarized in Table 2. The averaged MediSens MAE scores at the initial and the two-month attempts for the control group were 8.09 ± 1.60



and 6.21 ± 1.51 respectively. This data was used to account for the learning effect in the surgical group. The functional patients had a preoperative average MediSens MAE score of 11.46 ± 6.99 and a postoperative score of 7.13 ± 1.60 , which showed a near-significant improvement (p -value < 0.0640). The nonfunctional patients had a preoperative averaged MediSens MAE score of 11.24 ± 6.29 and a postoperative score of 12.41 ± 6.32 , which showed no improvement (p -value < 0.94). As illustrated in Figure 6, these results demonstrate that both the control and the functional patient population had some degree of improvement in their hand neuromotor performance when compared to the nonfunctional patients.

In Table 3, the percentage improvement of control participants was $17\% \pm 15\%$, whereas the functional group had an average percent improvement of $30\% \pm 18\%$. The 13% increase in improvement of the functional group, although not statistically significant (p -value < 0.0834), suggests that the patients' improvement was not due to the effects of learning alone. It suggests that their improvement in baseline motor function was the result of the surgical intervention.

In summary, the MediSens handgrip was able to differentiate between the expected motor learning and the postoperative improvement in handgrip neuromotor function of CSM patients. This suggests that it can be used to objectively quantify different levels of hand neuromotor function and to track postoperative rehabilitation.

Correlation between subjective and objective data

Investigating the correlation of a new measurement to other existing measurements is a common method for validating the reliability and consistency of a new tool [13]. Here, we compared the improvement in handgrip performance (i.e., the MediSens MAE scores) with patients' perceived levels of motor deficits in performing daily activities (the ODI scores). The Pearson product-moment correlation coefficient (or Pearson's r) was used to quantify the level of correlation [26-28].

Table 4 and Figure 3(b) shows that the ODI and the MediSens MAE scores had a statistically significant correlation ($r = -0.341$, $p < 1.14 \times 10^{-5}$). The Bland-Altman plot was used to assess the agreement between the MediSens MAE and ODI scores. The mean difference (i.e., the bias) was -0.26 (95% C.I. of -0.36 and -0.15) with an upper limit of agreement of 0.22 and a lower limit of agreement of -0.73 . The plot showed a strong positive correlation between the mean and the difference of the two measures. This pattern is due to a variation in the ranges of the MediSens MAE and the ODI scores. That is, the MediSens MAE scores ranged from 0.049 to 0.28 while the ODI scores ranged from 0.21 to 0.94 . This small range of the MediSens MAE and large range of the ODI scores accounts for the increasing differences as the averages get larger. However, the results are uniformly distributed within the limits of agreement, which indicates that there exists a considerable degree of agreement between the two scores.

Another means of comparing the MediSens MAE score with the ODI score is to correlate the percentage improvement of the two scores after receiving medical intervention. Table 4 and Figure 3(d) show that the percentage improvement in the MediSens MAE and the ODI scores had a significant correlation ($r = -0.723$, $p < 0.04$).

Although the MediSens MAE score only quantifies hand neuromotor function, these findings demonstrate the potential use of tracking handgrip progress to help interpret and to complement surveys, like the ODI, that assess global neuromotor function.

Subjective and objective tests for neuromotor assessment

We have demonstrated the ability of the MediSens handgrip to track patients' postoperative hand rehabilitation. Tracking patient progress using patient-reported outcomes (e.g., the ODI) is difficult because of its subjective nature. Complications with the use of a subjective test to assess patient rehabilitation include misinterpretation of a survey question, adjusting responses to reflect a personal belief system, and offering biased responses to prevent "regret or self-blame" for undergoing surgery [25]. More recently, the phenomenon of "response shift" has offered further insight into the issues with tracking patient progress through patient-reported outcomes like the ODI

[29]. Response shift refers to a changes in patients' personal standards, priorities, and concepts toward healthy-related quality of life as a result of medical intervention [29]. Furthermore, Trachter's study shows carpal tunnel syndrome that the patients' reports of functional capacity were lower than the anticipated capacity [30,31]. Fairbank et al. implicated "inconsistencies in answering questions [and] the natural fluctuations of symptoms as well as clinical improvements" as sources of errors [13]. Lastly, the use of changes in the averaged ODI scores for large-scale studies may overshadow inconsistencies in individual ODI results [25]. Such variability in ODI scores is implicit in the survey's subjective nature and becomes problematic when assessing the patients' motor progress [29]. Previous studies have demonstrated the usefulness of the ODI scores for assessing motor function, but more objective clinical tests are needed for tracking changes in motor function over time [13,32,33]. Objective testing instruments, such as the MediSens handgrip, may be a more accurate representation of an individual's motor capacity because they eliminate the chances of subjective responses to questions.

Because this project was a pilot study, we encountered some difficulties. Our sample size created a difference in the male-to-female ratio between control and CSM patient groups, and it has underestimated the statistical power of the correlation between the MediSens MAE and the ODI scores. Despite the difference in the ratio of male to female, we have not found any statistically significant difference in the MediSens MAE scores within the demographic of control participants; there was no statistically significant difference between male and female participants (p -value < 0.129), between weights at < 160 pounds and at \geq 160 pounds (p -value < 0.318), nor among all different permutations of age groups: 40s, 50s, 60s, and 70+. This reflects the efficacy of calibrating handgrip strength and that these demographics markers have not confounded the MediSens handgrip results. We acknowledge the limitation of a small sample size. However, this pilot study introduces the potential for a novel, objective, and quantitative test for assessing clinical progress of CSM patients. We hope this study will encourage research for elucidating other objective methods for assessing global neuromotor function.

Conclusions

In this paper, we introduce the MediSens system as a novel instrument to identify neuromotor deficits. Our data suggests that the MediSens handgrip device can differentiate between normal motor learning and the postoperative neuromotor improvement in CSM patients. The MediSens handgrip scores may be used to supplement or replace the ODI surveys in CSM patients with hand neuromotor deficits.

Abbreviations

CSM: Cervical spondylotic myelopathy; ODI: Oswestry Disability Index; PD: Parkinson's disease; MVC: Maximum voluntary contraction; MAE: Mean absolute error; RMSE: Root mean squared error.

Competing interests

The authors would like to disclose that Majid Sarrafzadeh, PhD has a proprietary interest in the MediSens handgrip. As part of the UCLA Department of Computer Science, Dr. Sarrafzadeh's team created this tool and has provided our clinical research group with the MediSens system. Members of the research lab under Daniel C. Lu, MD, PhD in the UCLA Department of Neurosurgery have no financial or personal relationships with outside persons or organizations that could have inappropriately influenced any of the components of this study.

Authors' contributions

RG composed the IRB application, collected, analyzed, interpreted data, and wrote the initial draft of the manuscript. SIL designed the MediSens handgrip and software, provided technical assistance during clinical testing, formatted MediSens software data for analysis, analyzed the data, and critically edited the content of the manuscript. AY revised and contributed to the content of the manuscript. JK assisted in coordination of subject testing and data interpretation. DSL coordinated clinical testing using the MediSens system and revised the manuscript. CL edited the manuscript. JHG, NG, BHP, MR, ME, AO, AG, and SP acquired the data, and critical analysis and interpretation of data at multiple time points during the project. IW recruited patients, interpreted data, and provided manuscript assistance. MS supplied the MediSens system to the DCL laboratory and provided data interpretation and analysis. DCL conceived, designed, supervised, provided funding, and performed surgeries for the study; he also critically reviewed and revised the manuscript. The aforementioned authors have given final approval to the version of the manuscript intended for publication. All authors read and approved the final manuscript.

Authors' information

Daniel C. Lu is an Associate Professor of Neurosurgery and Orthopedic Surgery at the University of California, Los Angeles. As the Director of the Neuroplasticity and Repair Laboratory and the UCLA Neuromotor Recovery and Rehabilitation Center, his research efforts are focused on modulating the neuronal circuitry and networks in the treatment of central nervous system disorders. Dr. Lu's clinical expertise involves minimally invasive techniques in the surgical management of degenerative, traumatic, neoplastic, and spinal disorders. Majid Sarrafzadeh is a Distinguished Professor in the Computer Science Department and the Electrical Engineering Department at the University of California, Los Angeles. As the co-founder and co-director of the UCLA Wireless Health Institute (WHI), his research interests include embedded computing with emphasis on healthcare. Over the past 25 years, he has collaborated with many industries, recently co-founding MediSens and Bruin Biometrics.

Acknowledgements

Funding for this research was made possible by the generous support from the J. Yang & Family Foundation and the NIH: EB15521 funded by NIBIB, NINDS, and NICD. The research described was conducted in the UCLA Clinical and Translational Research Center (CTRC) which was supported by NIH/National Center for Advancing Translational Science (NCATS): UCLA CTSI Grant Number UL1TR000124. We thank Ms. Naomi Gonzalez for providing logistical support in patient scheduling.

Author details

¹Neuroplasticity and Repair Laboratory, UCLA, Los Angeles, USA. ²Neuromotor Recovery and Rehabilitation Center, UCLA, Los Angeles, USA. ³Computer Science Department, UCLA, Los Angeles, USA. ⁴Department of Anesthesia, UCLA, Los Angeles, USA. ⁵Department of Neurosurgery, UCLA, Los Angeles, USA. ⁶Department of Orthopaedic Surgery, UCLA, Los Angeles, USA.

Received: 19 September 2013 Accepted: 10 July 2014

Published: 13 August 2014

References

1. Fehlings MG, Jha N, Hewson S, Massicotte E, Kopjar B, Kalsi-Ryan S: **Is surgery for cervical spondylotic myelopathy cost-effective? A cost-utility analysis based on data from the aospine north america prospective csm study.** *J Neurosurg Spine* 2012, **17**(1):89–93.

2. Lim H, Lee D, McKay W, Priebe M, Holmes S, Sherwood A: **Neurophysiological assessment of lower-limb voluntary control in incomplete spinal cord injury.** *Spinal Cord* 2005, **43**(5):283–290.
3. Tracy JA, Bartleson JD: **Cervical spondylotic myelopathy.** *Neurologist* 2010, **16**(3):176–187.
4. Hochman M, Tuli S: **Cervical spondylotic myelopathy: a review.** *Internet J Neurol* 2004, **4**(1):24–42.
5. Young WF: **Cervical spondylotic myelopathy: A common cause of spinal cord dysfunction in older persons.** *Am Fam Physician* 2000, **62**:1064–1070.
6. King J, MS R: **Validity and reliability of the short form-36 in cervical spondylotic myelopathy.** *J Neurosurg* 2002, **97**:180–185.
7. Singh A, Crockard H, Platts A, Stevens J: **Clinical and radiological correlates of severity and surgery-related outcome in cervical spondylosis.** *J Neurosurg* 2001, **94**:189–198.
8. Marino R, Barros T, Biering-Sorensen F, Burns S, Donovan W, Graves D, Haak M, Hudson L, Priebe M: **International standards for neurological classification of spinal cord injury.** *J Spinal Cord Med* 2003, **26**:50–56.
9. Denno J, Meadows G: **Early diagnosis of cervical spondylotic myelopathy. a useful clinical sign.** *Spine* 1991, **16**:1353–1355.
10. Estanol B, Marin O: **Mechanism of the inverted supinator reflex. A clinical and neurophysiological study.** *J Neurol Neurosurg Psychiatr* 1976, **39**:905–908.
11. Amer M, Hubert G, Sullivan S, Herbison P, Franz E, Hammond-Tooke G: **Reliability and diagnostic characteristics of clinical tests of upper limb motor function.** *J Clin Neurosci* 2012, **19**:1246–1251.
12. Fukui M, Chiba K, Kawakami M, Kikuchi S, Konno S, Miyamoto M, Seichi A, Shimamura T, Shirado O, Taguchi T, Takahashi K, Takeshita K, Tani T, Toyama Y, Yonenobu K, Wada E, Tanaka T, Hirota Y: **Japanese orthopaedic association back pain evaluation questionnaire. part 2. verification of its reliability: the subcommittee on low back pain and cervical myelopathy evaluation of the clinical outcome committee of the japanese orthopaedic association.** *J Orthop Sci* 2007, **12**:526–532.
13. Fairbank JCT, Pynsent PB: **The Oswestry disability index.** *Spine* 2000, **25**(22):2940–2953.
14. Singh A, Gnanalingham K, Casey A, Crockard A: **Use of quantitative assessment scales in cervical spondylotic myelopathy: survey of clinician's attitudes.** *Acta Neurochir (Wien)* 2005, **147**:1235–1238.
15. Finkelstein JA: **Response shift following surgery of the lumbar spine.** Thesis, University of Toronto; 2010.
16. Kurillo G, Zupan A, Bajd T: **Force tracking system for the assessment of grip force control in patients with neuromuscular diseases.** *Clin Biomech* 2004, **19**:1014–1021.
17. Boissy P, Bourbonnais D, Carlotti M, Gravel D, Arseneault B: **Maximal grip force in chronic stroke subjects and its relationship to global upper extremity function.** *Clin Rehabil* 1999, **13**:354–362.
18. Onla-Or S, Winstein C: **Determining the optimal challenge point for motor skill learning in adults with moderately severe parkinson's disease.** *Neurorehabil Neural Repair* 2008, **22**:385–395.
19. Ashoori A, McKeown M, Oishi M: **Switched manual pursuit tracking tasks to measure motor performance in parkinson's disease.** *Control Theory Appl (IET)* 2011, **5**:1970–1977.
20. Pradhan SD, Brewer BR, Carvell GE, Sparto PJ, Delitto A, Matsuoka Y: **Assessment of fine motor control in individuals with parkinson's disease using force tracking with a secondary cognitive task.** *J Neurol Phys Ther* 2010, **34**:32–40.
21. Halaney M, Carey J: **Tracking ability of hemiparetic and healthy subjects.** *Phys Ther* 1989, **69**:342–348.
22. Carey J, Baxter T, DiFabio R: **Tracking control in the nonparetic hand of subjects with stroke.** *Arch Phys Med Rehabil* 1998, **79**:435–441.
23. Lee SI, Ghasemzadeh H, Mortazavi BJ, Yew YA, Getachew R, Razaghy M, Ghalehsari N, Paak BH, Garst JH, Espinal M, Kimball J, Lu DC, Majid S: **Objective assessment of overexcited hand movements using a lightweight sensory device.** In *IEEE BSN*. USA: MIT; 2013.
24. Davidson M, Keating J: **Oswestry disability questionnaire (ODQ).** *Aust J Physiother* 2005, **54**:270.
25. Mannion A, Junge A, Grob D, Dvorak J, Fairbank J: **Development of a german version of the Oswestry disability index. part 2: sensitivity to change after spinal surgery.** *Eur Spine* 2006, **15**:66–73.
26. Haas M, Nyiendo J: **Diagnostic utility of the McGill pain questionnaire and the Oswestry disability questionnaire for classification of low back syndromes.** *J Manipulative Physiol Ther* 1992, **15**:90–98.
27. Grönblad M, Hupli M, Wennerstrand P, Järvinen E, Lukinmaa A, Kouri J, Karaharju E: **Intercorrelation and test-retest reliability of the Pain Disability Index (PDI) and the Oswestry Disability Questionnaire (ODQ) and their correlation with pain intensity in low back pain patients.** *Clin J Pain* 1993, **9**(3):189–195.
28. Grevitt M, Khazim R, Webb J, Mulholland R, Shepperd J: **The short form-36 health survey questionnaire in spine surgery.** *J Bone Joint Surg Br* 1997, **79**(1):48–52.
29. Schwartz C, Finkelstein J: **Understanding inconsistencies in patient-reported outcomes after spine treatment: response shift phenomena.** *Spine J* 2009, **9**(12):1039–1045.
30. Trachter R, Brouwer B, Faris M, McLean L: **Performance on a manual tracking task differentiates individuals at risk of developing carpal tunnel syndrome from those not at risk.** *J Electromyogr Kinesiol* 2011, **21**(6):998–1003.
31. Boyd K, Gan B, Ross D, Richards R, Roth J, MacDermid J: **Outcomes in carpal tunnel syndrome: symptom severity, conservative management and progression to surgery.** *Clin Invest Med* 2005, **28**(5):254–260.
32. Mannion A, Boneschi M, Teli M, Luca A, Zaina F, Negrini S, Schulz P: **Reliability and validity of the cross-culturally adapted Italian version of the core outcome measures index.** *Eur Spine J* 2012, **21**:737–749.
33. Damasceno L, Rocha P, Barbosa E, Barros C, Canto F, Defino H, Mannion A: **Cross-cultural adaptation and assessment of the reliability and validity of the core outcome measures index (comi) for the Brazilian-Portuguese language.** *Eur Spine J* 2012, **21**:1273–1282.

doi:10.1186/1743-0003-11-121

Cite this article as: Getachew et al.: Utilization of a novel digital measurement tool for quantitative assessment of upper extremity motor dexterity: a controlled pilot study. *Journal of NeuroEngineering and Rehabilitation* 2014 **11**:121.

Submit your next manuscript to BioMed Central and take full advantage of:

- Convenient online submission
- Thorough peer review
- No space constraints or color figure charges
- Immediate publication on acceptance
- Inclusion in PubMed, CAS, Scopus and Google Scholar
- Research which is freely available for redistribution

Submit your manuscript at
www.biomedcentral.com/submit

