

UC Irvine

UC Irvine Previously Published Works

Title

Epidemiology of Disease and Mortality From a PICU in Mozambique*

Permalink

<https://escholarship.org/uc/item/4f30642q>

Journal

Pediatric Critical Care Medicine, 19(11)

ISSN

1529-7535

Authors

Punchak, Maria

Hall, Kaitlin

Seni, Amir

et al.

Publication Date

2018-11-01

DOI

10.1097/pcc.0000000000001705

Peer reviewed

Epidemiology of Disease and Mortality From a PICU in Mozambique

Maria Punchak, MD, MSc¹; Kaitlin Hall, MD¹; Amir Seni, MD²; W. Chris Buck, MD¹;
Daniel A. DeUgarte, MD¹; Emily Hartford, MD¹; Robert B. Kelly, MD¹; Valéria I. Muando, MD^{2,3}

Objectives: Delivery of pediatric critical care in low-income countries is limited by a lack of infrastructure, resources, and providers. Few studies have analyzed the epidemiology of disease associated with a PICU in a low-income country. The aim of this study was to document the primary diagnoses and the associated mortality rates of patients presenting to a tertiary PICU in Mozambique in order to formulate quality improvement projects through an international academic partnership. We hypothesized that the PICU mortality rate would be high and that sepsis would be a common cause of death.

Design: Retrospective, observational study.

Setting: Tertiary academic PICU.

Patients: All admitted PICU patients.

¹David Geffen School of Medicine at UCLA, Los Angeles, CA.

²Hospital Central de Maputo, Maputo, Mozambique.

³Universidade Eduardo Mondlane, Maputo, Mozambique.

This work was performed at Hospital Central de Maputo, Universidade Eduardo Mondlane, Maputo, Mozambique.

The findings and conclusions presented are those of the authors and do not necessarily represent the official position of the funding agencies.

This partnership has been supported, in part, by the President's Emergency Plan for AIDS Relief through the Health Resources and Services Administration under the terms of Cooperative Agreement U97HA04128. This partnership, as well as this research study, has been supported by Anadarko Petroleum, the UCLA Center for World Health, Mending Kids International, Sun West Mortgage, the UCLA AIDS Institute, the NIH/NCRR/NCATS UCLA CTSI Grant UL1TR000124, and the Department of Surgery at the David Geffen School of Medicine at UCLA.

Drs. Hall, Seni, DeUgarte, and Kelly received support for article research from the National Institutes of Health. Drs. Hall's, Seni's, Buck's, and Kelly's institutions received funding from President's Emergency Plan for AIDS Relief through the Health Resources and Services Administration under the terms of Cooperative Agreement U97HA04128, Mending Kids International, Sun West Mortgage, and Anadarko Petroleum. Dr. Hartford disclosed that she was employed by the University of California Los Angeles as a pediatrician and partnership director for the partnership between UCLA and Maputo Central Hospital during the study data collection time frame. The remaining authors have disclosed that they do not have any potential conflicts of interest.

Address requests for reprints to: Robert B. Kelly, MD, Children's Hospital of Orange County, 1201 West La Veta Avenue, Orange, CA 92868. E-mail: rkelly@choc.org

Copyright © 2018 by the Society of Critical Care Medicine and the World Federation of Pediatric Intensive and Critical Care Societies

DOI: 10.1097/PCC.0000000000001705

Pediatric Critical Care Medicine

Interventions: All available data collection forms containing demographic and clinical data of patients admitted to the PICU at Hospital Central de Maputo, Mozambique from January 2013 to December 2013 were analyzed retrospectively.

Measurements and Main Results: The patient median age was 2 years (57% male). The most common primary diagnoses were malaria (22%), sepsis (18%), respiratory tract infections (12%), and trauma (6%). The mortality rate was 25%. Mortality rates were highest among patients with sepsis (59%), encephalopathy (56%), noninfectious CNS pathologies (33%), neoplastic diseases (33%), meningitis/encephalitis (29%), burns (26%), and cardiovascular pathologies (26%). The median length of PICU stay was 2 days. HIV exposure/infection had a nonstatistically significant association with mortality. Patients admitted for burns had the highest median length of PICU stay (4 d). Most trauma admissions were male (75%), and approximately half of all trauma admissions had an associated head injury (55%).

Conclusions: Infectious disease and trauma were highly represented in this Mozambican PICU, and overall mortality was high compared with high-income countries. With this knowledge, targeted collaborative projects in Mozambique can now be created and modified. Further research is needed to monitor the potential benefits of such interventions. (*Pediatr Crit Care Med* 2018; XX:00–00)

Key Words: burns; human immunodeficiency virus; malaria; pediatric; sepsis; trauma

Child mortality remains high in sub-Saharan Africa. Since 2000, the United Nations Millennium Development Goals and Sustainable Development Goals have guided aid funding and health outcome goals for ministries of health (1). During this time, global under-five child mortality decreased by approximately half, from 12.6 million in 1990 to 5.6 million in 2016 (2). In the World Health Organization (WHO) African Region, however, the average under-five mortality rate is still the highest at 81 per 1,000 live births, with great variability by region and country (3).

Mozambique is a low-income country in sub-Saharan Africa with a gross national income per capita of \$480 in 2016 (4).

It ranked 181 out of 188 countries in the 2016 United Nations Development Program Human Development Index (5). The country has made significant strides in reducing newborn, infant, and under-five mortality through health system strengthening efforts, but many challenges remain (6). In 2015, infant and neonatal mortality rates were 57 per 1,000 live births and 27 per 1,000 live births, respectively (7), and national HIV prevalence in people 15–49 years old was estimated to be 13.2% (8).

The Mozambican health system has tiered levels of care, including health posts, health centers, district hospitals, provincial hospitals, and three central/referral hospitals. Only the central/referral hospitals have PICUs. There were four doctors per 100,000 people in Mozambique based on a recent WHO report (9) and approximately 50 pediatric specialists in the public sector to serve a population of over 10 million children under 15 years old. According to the WHO, 73% of the nation's health budget in 2008 came from outside the country (10).

Hospital Central de Maputo (HCM) is the primary referral and academic hospital in Mozambique and has the most advanced PICU in the country. When this study was conducted, the pediatric department was a training site for 27 pediatric resident physicians and three pediatric surgery resident physicians. Although there were no strict criteria for PICU admission, children needing assisted ventilation, vasopressor therapy, or more intensive nursing care are generally admitted to the PICU. Occasionally, patients with terminal diseases or requiring palliative care are admitted to non-PICU beds at HCM. All services at HCM are available to patients free of charge.

The PICU has 21 beds. An average PICU day shift has two pediatricians/intensivists, two pediatric residents, four to five nurses, and three medical students. An average PICU evening shift has one to two pediatricians/intensivists, two pediatric residents, three nurses, and two medical students. An average PICU night shift has one pediatrician/intensivist, one pediatric resident, three nurses, and two medical students. There were three attending pediatric intensivists on staff at the time of the study (one Mozambican and two foreign nationals).

Pulse oximetry, central venous access, IV pumps, and five ventilators were available. Oxygen blending, heating, and humidification are only available with mechanical ventilation, thereby precluding the use of high-flow nasal oxygen. Oxygen can be delivered via face mask. Continuous positive airway pressure and bilevel positive airway pressure were not used during this period in the PICU. Dialysis for PICU patients was not routinely available at the time of this study. Recently, the PICU started building the capacity to offer peritoneal dialysis to patients. Laboratory tests available include point-of-care blood gas, lactate and hemoglobin testing, routine hematology and electrolyte panels, urinalysis and cerebrospinal fluid studies (Gram stain, cell counts, glucose and protein, *Cryptococcus* staining), rapid testing and smear microscopy for malaria, rapid HIV testing, and CD4 counts. HCM does have the capacity to perform blood, urine, and cerebral spinal fluid cultures, but the microbiology laboratory does not receive specimens at all hours, and slow turn-around times for cultures make them less useful

for early clinical decision-making in the PICU. Imaging services include portable radiography, CT, and ultrasound. Blood products available include packed RBCs, fresh frozen plasma, and platelets. Routinely available antibiotics include ampicillin, gentamicin, cotrimoxazole, metronidazole, ciprofloxacin, and ceftriaxone, with vancomycin and imipenem available on request based on culture results. Antimalarials used for complicated malaria in 2013 included both IV quinine and artesunate.

In 2007, the David Geffen School of Medicine at UCLA formed an academic partnership with HCM to strengthen the Department of Pediatrics and the Department of Pediatric Surgery and their associated residency programs. This partnership has supported pediatric faculty, physician trainee, and nursing education through in-country training and bilateral exchanges. There have also been several areas of more in-depth subspecialty support, including pediatric critical care. In addition, the partnership has secured donations and has made strategic investments in pediatric advanced life support equipment while developing longitudinal support and training in the PICU.

To date, there has not been a published description of the epidemiology of disease managed in the HCM PICU. The aim of this study was to document the primary diagnoses and the associated mortality rates of patients presenting to the tertiary HCM PICU and to use these data to identify priorities for future collaborative work to improve outcomes through our academic partnership. We hypothesized that the PICU mortality rate would be high and that sepsis would be a common cause of death.

MATERIALS AND METHODS

Study Design

A data collection form designed to capture PICU patient data, including demographics, length of PICU stay, patient origin, procedures, HIV status, diagnoses, outcomes, and causes of mortality for all patients admitted to the PICU at HCM, was being used in 2013. Forms were completed by HCM medical students, pediatric resident physicians, or intensivists at the completion of a patient's PICU stay.

This study represented a retrospective review of the data from these data collection forms from January 2013 to December 2013 to characterize disease occurrence rates and mortality in the HCM PICU. Incomplete records were available from July and August. Data from the PICU data collection forms were entered into a Microsoft Excel database. No patient-level chart review was done as part of this study, and no other data sources were used.

For patients who had multiple diagnoses, a senior clinician assigned the primary diagnosis to be either the most severe of those listed or the main diagnosis from which others were considered complications. When questions arose, the PICU chief physician was consulted for a final determination. Records were reviewed and adjudicated by members of the study team. When documented, sepsis was noted as the primary diagnosis regardless of the underlying etiology. Due to extremely limited

microbiology laboratory capacity at HCM, sepsis was primarily a clinical diagnosis based on signs and symptoms of hypoperfusion and infection. Malaria was diagnosed by smear microscopy and/or rapid antigen tests, and cerebral malaria was diagnosed in patients with confirmed *Plasmodium falciparum* malaria with coma (Glasgow Coma Scale < 11) or coma persisting greater than 30 minutes after a seizure per the standard WHO definition (11).

Positive rapid antibody tests were only used to confirm HIV exposure in patients less than 18 months. At the time of this study, timely virologic HIV testing by DNA polymerase chain reaction (PCR) for definitive diagnosis of infants was not available. For the purposes of this study, all patients less than 18 months with positive rapid antibody tests were considered HIV exposed. Patients greater than 18 months old were classified as HIV infected if they had a positive rapid antibody test and HIV uninfected if they had a negative rapid antibody test. Patients with no indication of a rapid antibody test being conducted or those with an inconclusive result were considered to have an unknown HIV status.

Statistical Analyses

Comparisons between groups were performed using Fisher exact test for categorical variables and Wilcoxon rank-sum test for continuous variables. The Mantel-Haenszel test was used to perform the bivariate analysis. Potential predictors of mortality analyzed included age, gender, HIV status, and sepsis. Age under 1 year was used as a predictor based on the National Institute of Health and Child Development Pediatric Terminology definition of a neonate and infant (age < 28 d and age < 12 mo, respectively) (12). Multivariable analysis was performed using logistic regression. Stata 12.1 was used for analyses (Stata Corp, College Station, TX). Statistical significance was defined as *p* value of less than 0.05.

Ethical Considerations

This study was approved by the UCLA Institutional Review Board, the Bioethics Committee at Universidade Eduardo Mondlane (Maputo, Mozambique), and the Scientific Committee at HCM. Need for informed consent was waived.

RESULTS

PICU Patient Demographics

In 2013, there were 340 pediatric beds and 8,581 admissions to the Department of Pediatrics at HCM. The hospital's overall pediatric mortality rate was 9%. Nonstudy departmental statistics for the PICU reported a total of 1,287 admissions, with 957 children (74%) transferred to the wards after stabilization and 330 deaths (26%). Of these 1,287 admissions, data collection forms for 987 patients (77%) were available for analysis. Incomplete records were available from July and August. Most patients were male (57%). The median age was 2 years (range, 0–15 yr). Median length of stay was 2 days (range, 0–30 d).

HIV Status

HIV rapid antibody testing was performed in 620 patients (63%). Of those patients tested, 149 (24%) had positive results,

461 (74%) had negative results, and 10 (2%) had indeterminate results. Of patients with a positive HIV antibody result, 62 (42%) were less than 18 months old and were potentially infected but were classified as exposed for this study. Of the remaining patients with positive tests, 84 (56%) were greater than or equal to 18 months old and categorized as HIV infected. Three patients (2%) did not have age recorded. More than one third of patients (37%) were either not tested or did not have information available on their data collection form.

Patients who had malnutrition listed as a diagnosis had a higher HIV exposure/infection likelihood than those without documented malnutrition (16% vs 4%; *p* < 0.0001). Patients with a primary diagnosis of a respiratory tract infection had the highest comorbidity with HIV. Of the 70 patients (12%) who had a primary diagnosis of a respiratory tract infection, 28 (40%) were HIV exposed/infected (Table 1).

Primary Diagnoses

Malaria was the most frequent primary diagnosis (22%), followed by sepsis, respiratory tract infections, trauma, meningitis/encephalitis, gastroenteritis, and surgical abdomen (Table 1). Diagnoses differed for children less than 1 year old (Table 2). The diagnoses with the lowest median ages were gastroenteritis (median, 0.7 yr; range, 0–8 yr), sepsis (median, 0.8 yr; range, 0–14 yr), and respiratory tract infection (median, 0.8 yr; range, 0.1–13 yr). The diagnoses with the highest median ages were diabetic ketoacidosis (median, 12 yr; range, 1.1–15 yr) and neoplastic diseases (median, 11.5 yr; range, 2–14 yr) (Table 1). The diagnosis of neoplastic diseases was used to refer to patients presenting to HCM with complications of their oncologic diagnoses. One patient received hemodialysis in this study.

Sepsis

Patients with a primary diagnosis of sepsis had a higher mortality rate than nonseptic patients (56% vs 18%; *p* < 0.001). Underlying etiologies of sepsis differed significantly between patients less than 1 year old and those greater than or equal to 1 year old (*p* < 0.001) (Fig. 1). In patients less than 1 year old, the most prevalent causes of sepsis were respiratory tract infection (28%), gastroenteritis (22%), sepsis of unknown etiology (13%), and meningitis/encephalitis (10%). The most prevalent causes of sepsis in children greater than or equal to 1 year old were burns (22%), respiratory tract infections (16%), sepsis of unknown etiology (16%), and gastroenteritis (15%).

Malaria

Of the 237 patients (24%) who had a diagnosis of malaria, 172 patients (60%) had documented cerebral malaria. No mortality difference was observed between patients with cerebral malaria and those without. With respect to age, 90% of those patients with a primary diagnosis of malaria were greater than or equal to 1 year old.

Trauma

Trauma accounted for 6% (63/987) of all primary diagnoses in the PICU (Table 1). Seventy-seven percent of all trauma cases

TABLE 1. PICU Demographics, Length of Stay, and Mortality by Discharge Diagnosis

Primary Diagnosis	Patient Totals		Female n (% of Known)	Age Median (Range)	Length of Stay Median (Range)	Mortality n (% of Known)	HIV Positive or Exposed n (% of Known)
	n	%					
Total	987	100	401 (43)	2 (0–15)	2 (0–30)	242 (25)	149 (24)
Missing data, n (%)	NA	NA	61 (6)	27 (3)	127 (13)	42 (4)	367 (37)
Malaria	217	22	94 (45)	5 (0–14)	2 (0–27)	30 (14)	30 (22)
Sepsis	182	18	86 (49)	0.8 (0–14)	2 (0–30)	104 (59)	34 (29)
Respiratory tract infection	117	12	42 (38)	0.8 (0.1–13)	2 (0–10)	23 (21)	28 (40)
Trauma	63	6	15 (25)	5 (0.1–14)	2 (0–16)	5 (8)	0 (0)
Meningitis/encephalitis	62	6	21 (38)	3 (0–14)	3 (0–15)	17 (29)	18 (38)
Gastroenteritis	63	6	27 (45)	0.7 (0.4–1.1)	2 (1–2)	11 (18)	8 (23)
Surgical abdomen	52	5	16 (36)	1.2 (0–15)	3 (1–8)	6 (13)	5 (15)
Cardiovascular pathologies	33	3	14 (44)	3 (0.1–14)	1 (0–7)	8 (26)	7 (33)
Burns	29	3	17 (63)	2 (0.1–12)	4 (0–28)	7 (26)	0 (0)
Diabetic ketoacidosis	26	3	11 (44)	12 (1.1–15)	1 (1–4)	1 (4)	1 (8)
Seizures	22	2	9 (47)	5 (0–14)	1 (0–22)	3 (14)	2 (13)
Noninfectious CNS pathologies	21	2	11 (55)	6 (0–12)	1 (0–4)	7 (33)	0 (0)
Other	18	2	6 (38)	7 (0–14)	2.5 (0–28)	4 (24)	2 (20)
Intoxication	15	2	8 (53)	2 (0.3–15)	1 (0–12)	3 (20)	1 (11)
Renal pathologies	14	1	7 (58)	6 (0.3–14)	2 (1–7)	3 (21)	2 (25)
Other respiratory pathologies	14	1	2 (15)	1.4 (0.3–11)	2 (0–8)	3 (25)	4 (44)
Encephalopathy	9	1	4 (50)	1.5 (0–14)	1 (0–12)	5 (56)	2 (33)
Asthma	7	1	2 (29)	3.1 (1.9–11)	1 (0–2)	0 (0)	0 (0)
Neoplastic diseases	6	1	4 (67)	11.5 (2–14)	2 (1–27)	2 (33)	1 (16)
Malnutrition	5	1	2 (40)	1.2 (0.4–1.8)	3 (1–6)	0 (0)	3 (75)
Skin/soft-tissue infection/abscess	4	< 1	2 (50)	3.2 (0–7)	1 (1–4)	0 (0)	0 (0)
Anemia	4	< 1	1 (100)	1.6 (0.1–11)	1 (0–5)	0 (0)	1 (33)
Gastrointestinal bleeding	3	< 1	0 (0)	5 (2–13)	1 (0–2)	0 (0)	0 (0)
Mental illness	1	< 1	0 (0)	Missing	3 (3–3)	0 (0)	0 (0)

NA = not applicable.

were traumatic brain injuries (TBI). Mortality was 8% among patients with a TBI and 13% among all other trauma patients ($p = 0.615$). Patients admitted with trauma were significantly more likely to be male (75% vs 25%; $p < 0.005$).

Burns

A total of 49 patients had burn injury listed as one of their PICU diagnoses. Fifty-nine percent of those patients had a primary diagnosis of burns. The remaining 41% of patients had a primary diagnosis of sepsis. The mortality rate for all burn patients was 45% compared with a mortality rate of 24% for patients without a burn diagnosis ($p = 0.001$). In burn patients who had a primary diagnosis of sepsis, the mortality rate was 75%. Burn patients without a primary diagnosis of sepsis had

a mortality rate of 24%. Of patients with a documented burn degree, seven (17%) had third-degree burns, and the remaining 83% had second-degree burns. The mortality rate was 86% in patients with documented third-degree burns. There was no significant difference in median percent total body surface area burned between survivors and nonsurvivors (23%, 25%, respectively). Seven patients among the nonsurvivors were mechanically ventilated, and no survivors were mechanically ventilated ($p = 0.002$).

Mortality

The PICU mortality rate for the 987 patients was 25% (Table 1). Of these 987 patients, 114 patients (12%) were transferred from the HCM ward with a mortality rate of 28%, 317 patients

TABLE 2. Most Frequent Discharge Diagnoses and Associated Mortality by Age (< 1 yr vs ≥ 1 yr)

Diagnoses	n (%)	Mortality Rate, %
Age < 1 yr		
Sepsis	95 (31)	60
Respiratory tract infection	63 (20)	22
Gastroenteritis	44 (14)	19
Surgical abdomen	24 (8)	19
Other	83 (27)	24
Age ≥ 1 yr		
Malaria	196 (30)	14
Sepsis	80 (13)	59
Trauma	51 (8)	8
Respiratory tract infection	49 (8)	21
Other	275 (41)	20

(32%) were admitted through the HCM emergency department without transfer from another facility with a mortality rate of 19%, 518 patients (52%) were transferred or referred to the PICU from outside HCM with a mortality rate of 27%, and

38 patients (4%) did not have an origin noted with a mortality rate of 29%. Of the 91 patients who received mechanical ventilation, 71 patients died (78% mortality).

A bivariate analysis was performed to determine whether age, gender, sepsis, or HIV status were independent predictors of PICU mortality. Age less than 1 year and a positive sepsis diagnosis were each individually associated with mortality ($p = 0.001$; $p < 0.001$, respectively). Further analysis of these two predictors of interest showed that only sepsis was a significant predictor of mortality (adjusted odds ratio, 5.64; 95% CI, 3.56–8.93; $p < 0.001$) after accounting for age-related mortality. An association between HIV exposure/infection and mortality neared significance ($p = 0.06$) (Table 3).

DISCUSSION

This study adds to the small body of literature describing the spectrum of disease and mortality for pediatric critical care patients in sub-Saharan Africa and an even smaller body of literature reporting results from this region from a dedicated PICU. There was a high occurrence rate of infectious disease and a high mortality rate of 25%.

Others have published pediatric critical care epidemiologic reports from Africa also showing high mortality rates. Ilori and Kalu (13) found the pediatric critical care mortality rate to be 45.5% at Calabar Teaching Hospital, Nigeria, with common reasons for admission including burns, eclampsia, thoracic surgery, and abdominal surgery. Embu et al (14) reported a pediatric critical care mortality rate of 36.1% at Jos University Hospital, Nigeria, with postsurgical and trauma patients constituting most of the admissions. The most recent report was from Ballot et al (15) who noted a pediatric mortality rate of 16.2% in a combined neonatal ICU/PICU in South Africa. Most of the admissions were surgical.

Healthcare worker staffing for pediatric critical care undoubtedly affects patient outcomes and mortality. In North America, where critical care physicians are more abundant, one study reported a mortality rate of 6.04% in surgical ICUs with intensivist staffing compared with a rate of 14.4% in noncritical care physician staffed surgical ICUs (16). At HCM at the time of this study, there were only 17 critical care nurses, one Mozambican pediatric intensivist, and two foreign

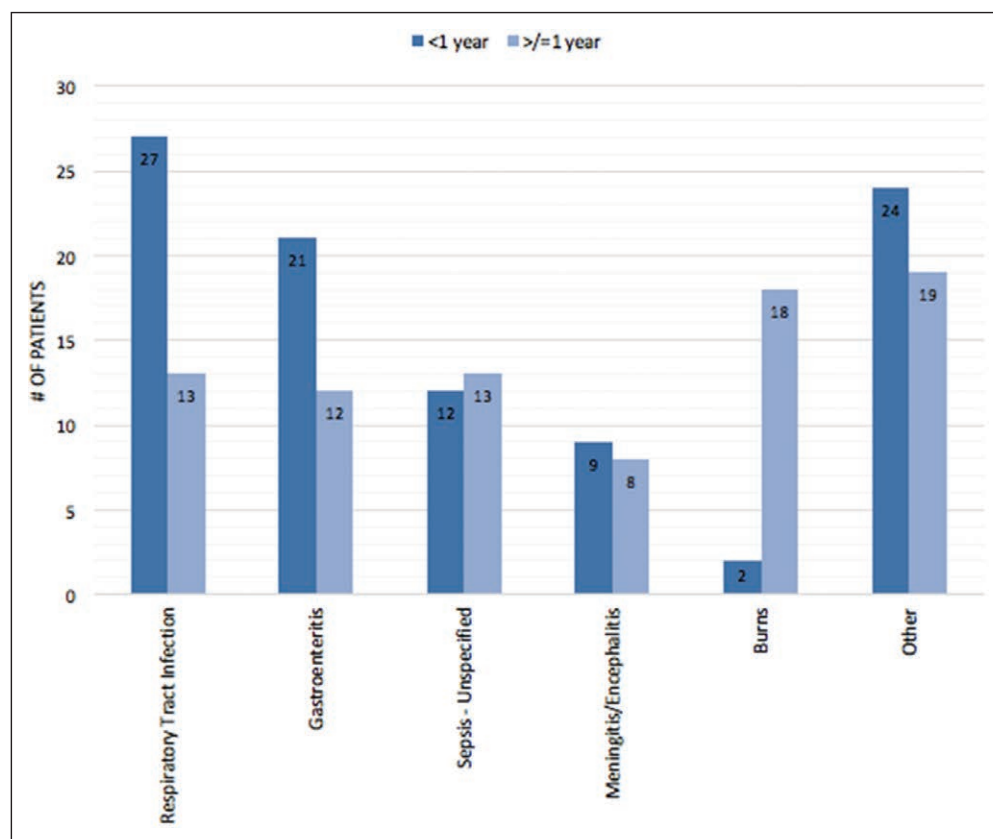


Figure 1. Conditions associated with sepsis diagnosis among children less than 1 yr old and greater than or equal to 1 yr old.

TABLE 3. Bivariate Analysis of Potential Predictors of Mortality in the Hospital Central de Maputo PICU

Risk Factors	Mortality, % (n/total)	OR (95% CI)	p
Age			
< 1 yr	34 (99/294)	1	
≥ 1 yr	22 (139/624)	0.6 (0.42–0.77)	0.001
Gender			
Male	24 (121/504)	1	
Female	28 (106/383)	1.21 (0.89–1.64)	0.215
HIV status			
HIV not infected	24 (106/445)	1	
HIV exposed/infected	32 (46/145)	1.49 (0.98–2.24)	0.060
Sepsis			
No	18 (138/766)	1	
Yes	59 (104/176)	6.57 (4.62–9.35)	< 0.001

OR = odds ratio.

national pediatric critical care physicians. This can lead to a low provider-to-patient ratio as well as a low nurse-to-patient ratio that undoubtedly affects patient care and monitoring and likely mortality. In addition, there are no respiratory therapists in the HCM PICU which also likely affects outcomes. In the HCM PICU, critical care nurses receive on-the-job critical care training and do not receive a formal degree or certificate classification. Critical care nursing staff are essential to assuring close monitoring, administration of therapies, and early detection of clinical deterioration. All of these limitations may play a role in the high mortality seen among mechanically ventilated patients in our study. These challenges highlight the general problem of insufficient human resources for healthcare in low-income countries such as Mozambique.

Another likely contributing factor to the high PICU mortality rate at HCM is late presentation to critical care. Although this was not quantified, HCM intensivists report this anecdotally, and slightly higher mortality rates were seen for patients transferred from other facilities to HCM. There are many potential contributing factors to late presentation, including delays related to triage up Mozambique's tiered healthcare system (17), late care-seeking by families due to a lack of health education, and socioeconomic factors and delays in accessing healthcare related to the geographic distribution of health centers and a poor transportation infrastructure. Anecdotally, we also speculate that systems issues with interfacility communication, resource limitations, and challenges involved with interfacility transport lead to late presentation of critically ill children who have resultant short PICU lengths of stay due to high mortality rates. Improving access to care, building a more robust interfacility transport system, and further promoting health education would likely result in an earlier presentation to definitive medical care. Further investigation is needed to evaluate these hypotheses. Determining the length of stay

or the length of illness prior to PICU admission was beyond the scope of this study but could add additional information regarding the severity of disease, recognition of a change in acuity, or timeliness of transfer to the HCM PICU.

Malaria was the most common primary PICU diagnosis in this study. Survivors of cerebral malaria often have significant, permanent morbidity and disability, and our dataset did not allow for estimation of this outcome. Review of malaria clinical management protocols in the HCM PICU show practice consistent with national and international guidelines, and, therefore, we believe that reducing the incidence and severity of disease seen in the PICU will depend primarily on improved public health malaria control measures to reduce the prevalence of disease in southern Mozambique (18).

Sepsis and burns were a significant cause of mortality in the HCM PICU. Similar findings have been described in both high- and low-income countries. For instance, pediatric mortality rates for sepsis in the United States have been reported to be as high as 25% (19). Sepsis may be an indicator of disease severity and can complicate other diagnoses seen, including malaria, HIV/AIDS, and diabetes mellitus (20). HCM follows global guidelines for treating sepsis and has access to cardiopulmonary monitoring, mechanical ventilation, and crystalloid fluid, but limitations in terms of access to broad-spectrum antibiotics, timely microbiological culture and sensitivities, inotropes, and low provider-to-patient ratios likely affect patient outcomes.

Burn injuries account for a significant proportion of pediatric deaths in low-income countries. At HCM the PICU mortality for all burn patients was 45%. Greater than 96% of fatal fire-related burns occur in low- and middle-income countries (21). The mortality rate of pediatric fire-related burns in Africa is 8.7 deaths per 100,000 children, compared with 0.4 deaths per 100,000 in high-income countries (22). Burns are

a significant public health issue, and clearly, burn prevention measures are needed in countries like Mozambique to reduce the incidence of these injuries. Although surgical debridement and antibiotics are available at HCM for burn patients, further analysis is required to determine the reasons for this high mortality. We did not capture any diagnoses specifically related to airway burn injury among the patients with burns, but we cannot state definitively that there were no airway injuries given that in-depth chart reviews were not conducted.

Trauma was the primary diagnosis for 6% of patients in this study, and, surprisingly, mortality was lower for TBI than for those without TBI (although not statistically significant). Anecdotally, most pediatric head injuries seen at HCM are related to motor vehicle collisions with concomitant polytrauma. Given the lack of capacity for critical care transport stabilization at many of the referring medical facilities, there was likely a selection bias for less severe polytrauma with associated head injuries to be admitted to HCM which may help explain these findings.

The association between HIV exposure/infection and mortality approached significance in our cohort, and if we had been able to differentiate HIV exposure from infection in children less than 18 months old, we believe that HIV infection would have been significantly associated with mortality. HIV exposed and infected children are likely over-represented in the PICU (24% of children with test results) compared with the estimated HIV prevalence in the general population (11.5% in people 15–49 yr old in 2009, no pediatric estimates available) (8). The national prevention of mother to child transmission program has moved to Option B+, and the pediatric antiretroviral treatment program has grown from 34,866 children on treatment in 2013 to 82,201 as of June 2017 (23). These strides should reduce the number of untreated children at risk for severe HIV-associated infections, and we suspect that future studies will show a reduced proportion of infected children admitted to the PICU.

Over one third of the children in this study did not have their HIV status documented on discharge from the PICU. WHO and national guidelines call for routine opt out testing for all admitted children in HIV-endemic countries through provider-initiated testing and counseling (24). Many children likely had testing done on the wards after stabilization in the PICU, but those data are not available, and more timely screening for HIV on arrival to the hospital is needed. HCM has received a point-of-care HIV DNA PCR machine which gives results in less than 1 hour, allowing HCM clinicians to move from presumptive to definitive diagnoses in exposed infants.

There are several other limitations to this study. Our study was retrospective and relied on PICU data collection forms completed at the time of care. These forms did not have the adequate breadth of data available, nor did the study team perform an in-depth chart review of specific diagnostic and treatment-related factors associated with mortality from various illnesses. Since our focus was to identify general disease demographics for targeted teaching, quality improvement, and resource allocation purposes, we sought this approach

for efficiency in an environment lacking an electronic medical record and robust medical documentation upon patient transfer to HCM.

Multiple data collection forms were missing from July and August which are winter months in Mozambique. This possibly led to an underestimation of viral infections and burns which are known to occur in higher frequencies in winter months as well as an overestimation of malaria, which is more common in summer months. Additionally, we only had access to 987 data collection forms from the 1,287 admissions to the PICU in 2013. Furthermore, we also do not know how many children in the community may have died who may have benefited from PICU care at HCM. Although determining the severity of illness at PICU admission is desirable and should be investigated in a future study, this was beyond the scope of our project. Last, the actual mechanism of death was not consistently recorded or described with complete detail making it difficult to determine whether additional resources or training could have made an impact on mortality. Additional study is also needed to document the barriers to accessing medical care as well as the microeconomic and macroeconomic interactions of Mozambique and its citizens.

Despite these limitations, this retrospective review has been extremely helpful for our academic partnership in terms of identifying areas for training, quality improvement projects, investments in medical equipment, and future research. We have initiated a comprehensive project to improve pediatric critical care transport with HCM and its principal referring hospitals. As part of this project, we plan to study interfacility communication, patient demographics, and PICU outcomes. Additional areas for future clinical research that were identified through this study include more detailed evaluations of disease-specific outcomes based on severity at initial presentation and specific treatments, with analysis of the mechanisms of death.

CONCLUSIONS

We have summarized the typical PICU caseload for a large, academic, urban referral center in Mozambique. There was a high occurrence rate of HIV exposure/infection, malaria, and sepsis as well as a high overall mortality rate compared with high-income countries. This initial descriptive study has helped determine priorities for training, quality improvement, and future research and has offered an example of how an academic partnership can focus attention and resources on pediatric critical care in a low-income country.

ACKNOWLEDGMENTS

We would like to recognize all of the Hospital Central de Maputo PICU staff, including the nurses, technicians, and physicians who work daily in challenging conditions and are invested in projects like this that can lead to improvement in patient outcomes. Celma Issufo, Pedro Santos, Vanda Amado, and Sergio Salvador all gave valuable background information for this study.

REFERENCES

1. Taylor S, Williams B, Magnus D, et al: From MDG to SDG: Good news for global child health? *Lancet* 2015; 386:1213–1214
2. World Health Organization: Fact Sheet: Children: Reducing mortality. Version October 31, 2017. Available at: <http://www.who.int/mediacentre/factsheets/fs178/en/>. Accessed April 25, 2018
3. World Health Organization: Global Health Observatory Data: Under-Five Mortality. 2016. Available at: http://www.who.int/gho/child_health/mortality/mortality_under_five_text/en/. Accessed April 25, 2018
4. The World Bank: World Development Indicators. Available at: <http://databank.worldbank.org/data/reports.aspx?source=world-development-indicators>. Accessed April 25, 2018
5. Human Development Report 2016: Human Development for Everyone. New York, United Nations Development Programme, 2016
6. Fernandes QF, Wagenaar BH, Anselmi L, et al: Effects of health-system strengthening on under-5, infant, and neonatal mortality: 11-year provincial-level time-series analyses in Mozambique. *Lancet Glob Health* 2014; 2:e468–e477
7. The State of the World's Children 2016: A Fair Chance for Every Child. New York, United Nations Children's Fund (UNICEF), 2016
8. Inquérito de indicadores de imunização, malária e HIV/SIDA em Moçambique (IMASIDA) 2015: Relatório de Indicadores Básicos de HIV. Instituto Nacional de Saúde and Instituto Nacional de Estatística, 2017
9. World Health Statistics 2015. Geneva, World Health Organization, 2015
10. World Health Organization: Mozambique: Mozambique's Health System. Available at: http://www.who.int/countries/moz/areas/health_system/en/index1.html. Accessed April 23, 2018
11. Guidelines for the Treatment of Malaria. Second Edition. Geneva, World Health Organization, 2010
12. Williams K, Thomson D, Seto I, et al; StaR Child Health Group: Standard 6: Age groups for pediatric trials. *Pediatrics* 2012; 129(Suppl 3):S153–S160
13. Ilori IU, Kalu QN: Intensive care admissions and outcome at the University of Calabar Teaching Hospital, Nigeria. *J Crit Care* 2012; 27:105.e1–105.e4
14. Embu HY, Yiltok SJ, Isamade ES, et al: Paediatric admissions and outcome in a general intensive care unit. *Afr J Paediatr Surg* 2011; 8:57–61
15. Ballot DE, Davies VA, Cooper PA, et al: Retrospective cross-sectional review of survival rates in critically ill children admitted to a combined paediatric/neonatal intensive care unit in Johannesburg, South Africa, 2013–2015. *BMJ Open* 2016; 6:e010850
16. Ghorra S, Reinert SE, Cioffi W, et al: Analysis of the effect of conversion from open to closed surgical intensive care unit. *Ann Surg* 1999; 229:163–171
17. Dos Anjos Luis A, Cabral P: Geographic accessibility to primary healthcare centers in Mozambique. *Int J Equity Health* 2016; 15:173
18. Global Technical Strategy for Malaria 2016–2030. Geneva, World Health Organization, 2015
19. Weiss SL, Fitzgerald JC, Pappachan J, et al; Sepsis Prevalence, Outcomes, and Therapies (SPROUT) Study Investigators and Pediatric Acute Lung Injury and Sepsis Investigators (PALISI) Network: Global epidemiology of pediatric severe sepsis: The sepsis prevalence, outcomes, and therapies study. *Am J Respir Crit Care Med* 2015; 191:1147–1157
20. Cheng AC, West TE, Limmathurotsakul D, et al: Strategies to reduce mortality from bacterial sepsis in adults in developing countries. *PLoS Med* 2008; 5:e175
21. World Health Organization: Violence and Injury Prevention: Burns. Available at: http://www.who.int/violence_injury_prevention/other_injury/burns/en/. Accessed August 20, 2017
22. Peden M, Oyegbite K, Ozanne-Smith J, et al (Eds): World Report on Child Injury Prevention. Geneva, Switzerland, WHO and UNICEF, 2008
23. Ministério da Saúde: Relatório Semestral 2017: Relatório Semestral das Actividades Relacionadas ao HIV/SIDA. 2017. Available at: <http://www.misau.gov.mz/index.php/relatorios-semestrais>. Accessed April 25, 2018
24. Guidance on Provider-Initiated HIV Testing and Counselling in Health Facilities. Geneva, World Health Organization, 2007