

UCLA

Program on International Migration

Title

The Bounded Polity: The Limits to Mexican Emigrant Political Participation

Permalink

<https://escholarship.org/uc/item/4g57d01g>

Authors

Roger, Waldinger
Thomas, Soehl

Publication Date

2013-06-08

Peer reviewed

The Bounded Polity: The Limits to Mexican Emigrant Political Participation

Roger Waldinger & Thomas Soehl
Department of Sociology
University of California Los Angeles

March 2013

Social Forces, V 91, 4: 1239-1266 (2013) ; doi: 10.1093/sf/sot048

Abstract:

International migration yields pervasive cross-border social engagements, yet homeland political involvements are modest to minimum. This contrast reflects the ways in which the distinctive characteristics of expatriate political life impede participation in the polity that emigrants have left behind. As polities are bounded, moving to the territory of a different state yields political detachment: diminishing awareness of home country political matters and weakened ties to the home state's electoral institutions. To assess this argument, we use a representative survey of the Mexican born population in the US to analyze two critical conditions for participation in expatriate elections: emigrants' ability to demonstrate eligibility to vote and their knowledge about voting procedures. We find clear signs of detachment. Most Mexican emigrants are not in a position to participate in homeland politics. Social ties, while pervasive, are associated with more knowledge only for the very small segment of the most engaged.

Acknowledgements:

For thoughtful comments on earlier versions of this paper we would like to thank Social Forces editor Arne Kalleberg and three anonymous reviewers.

This research was supported by grants from the Russell Sage (#88-08-05) and National Science (SES-0751944) Foundations and a fellowship to Roger Waldinger from the John Simon Guggenheim Memorial Foundation. Support for Thomas Soehl was provided by the University of California, Los Angeles, Graduate Division, a predoctoral advanced quantitative methodology training grant (no. R305B80016) awarded to the University of California, Los Angeles, by the Institute of Education Sciences of the U.S. Department of Education, and the ZEIT-Stiftung Ebelin und Gerd Bucerius. Responsibility for conclusions reported in this article is that of the authors alone. Direct correspondence to Roger Waldinger, Department of Sociology, University of California, Los Angeles, Haines Hall 264, Los Angeles, California 90095. E-mail: waldinge@soc.ucla.edu

International migration moves people from the territory of one state to the territory of another, but emigrant loyalties to the place left behind often remain strong. While most migrants stay attached to the significant others still living at home, only some remain engaged with homeland politics -- long-distance involvement that have become a topic of growing scholarly interest. Yet, the phenomenon is paradoxical: Expatriate voting is widespread, with over 100 countries allowing emigrants to vote, but typically excites small circles of intensely involved migrant activists, *not* the rank and file.

Scholarly interest in expatriate voting has been particularly spurred by developments in Mexico. In the late 1980s, Mexican immigrant activists in the United States provided a platform for candidates dissenting from the country's once dominant party, the *Partido Revolucionario Institucional* (PRI). They later lobbied for greater, home country rights, acquiring the right of dual nationality in 1996, and then that of extraterritorial voting in 2005, with its first application to a presidential election occurring in 2006. Franchise extension, however, led to little participation, with fewer than 55,000 applications for an expatriate voting ballot, yielding 32,632 expatriate votes, much to the disappointment of the migrant activists who had lobbied so hard to gain the vote.

The Mexican experience is not exceptional. Few emigrants in the United States report having voted in a homeland election after moving to the United States. While low participation may reflect the novelty of some expatriate voting systems in the Western Hemisphere, these patterns are hardly unique as participation rates are low even in long established systems. A case in point are French expatriates, whose rates of electoral participation have declined over the past 25 years, falling well below the levels recorded in the mainland, even though France has allowed expatriate voting ever since 1946, has built-up an extensive consular infrastructure,

has intensified its efforts to maintain contact with emigrants, and even allows for internet voting (Cariot and Clave, 2009). Beyond voting other indicators also point to limited expatriate political engagement. For example, 34% of foreign-born respondents to the 2006 Latino National Survey reported paying *no* attention to home country politics with another 23% saying that they pay only a little attention (Fraga et al. 2006). Only 4% of the persons queried by the 2008 National Asian American Survey reported involvement in activities dealing with their country of origin (Wong et al. 2011: 77). 94% of Colombian, Dominican, and Salvadoran immigrants surveyed by the Comparative Immigrant Entrepreneurship Project said that they *never* participated in campaigns to support home country political candidates; 96% also reported that they *never* contributed to home country electoral campaigns.¹

By contrast, ongoing social connections to significant others left behind appear pervasive. A recent representative survey of Latin-American immigrants in the U.S. found that two-thirds call home at least once a month, over half send remittances, and almost 30% traveled home at least once in the prior two years (Pew Hispanic Center 2006). Though only a minority of Latin-American immigrants engages in the type of intense, ongoing connections, most maintain some degree of connectedness. Not surprisingly, the impacts of these ongoing ties can be readily observed in sending societies, as exemplified by the rising worldwide flow of remittances.

We contend that this *contrast between pervasive cross-border social engagements and modest to minimal homeland political involvements* reflects the ways in which the distinctive characteristics of expatriate political life impede political participation. *As polities are bounded, moving to the territory of a different state yields political detachment, diminishing awareness of home country political matters and weakening the ties to home state electoral*

institutions needed for voting. We assess this argument through consideration of Mexican expatriates in the United States. *We analyze two critical preconditions for participation in expatriate elections: namely the ability to demonstrate eligibility and knowledge about voting procedures.*

We proceed by analyzing a large-scale, nationally representative sample of Mexican immigrants in the United States. Conducted in January and February 2006, five months *before* the first Mexican presidential election allowing emigrant votes (Suro and Escobar 2006), this survey is one of the few sources of data on emigrants' knowledge of electoral procedures and their eligibility to participate. Consequently, it is well suited to this paper's central goal of assessing the factors affecting the capacity of Mexicans in the United States to participate in elections back home. By contrast, as the survey was conducted *prior* to the election, it could not provide information on whether or not respondents voted, *a question entirely different from the one that this paper addresses.*

The characteristics of sending states' political system and the type of election at hand certainly influence the level of expatriate interest; we note that Mexico extended voting rights to citizens abroad in such a way as to depress participation rates. Registration procedures were elaborate, and identification documents not easily obtained. Yet the ability to identify oneself as an eligible voter and knowledge of election procedures are issues issue in all elections. We return to the issue of generalizability of the Mexican case in more detail in the concluding sections, but note here that by virtue of occurring outside the territory of the state, voting procedures will necessarily be more complex in the expatriate context. Thus our analysis *highlights conditions inherent to expatriate participation in electoral activity that will apply to a variety of contexts.*

EMIGRANT POLITICAL PARTICIPATION AND EXPATRIATE VOTING

Mobilization and knowledge:

Re-engaging with the homeland political system they left behind may appeal to *some* migrants but not to *all*, in particular the labor migrants leaving Mexico, for whom exit is implicitly political. As noted by Mexican sociologist Arturo Santamaria Gómez, “the deepest experience, the most strongly felt discomfort of the migrants toward the Mexican government was the conviction that with a ‘good government’ they would not have had to leave their country” (1994:165).

Other barriers may result from lack of political involvement *prior* to migration. Since migrants are typically young, many leave with little experience in formal politics. Political conditions at home also matter: opportunities for engagement with electoral politics may be scant in undemocratic and even democratizing societies. In the Latino National Survey, for example, only 47% of Mexican-born respondents voted before emigrating. Hence, many potential expatriate voters would be first-time voters, for who barriers are especially high and whose socio-economic resources are especially influential (Plutzer 2002).

Moreover, mechanisms facilitating participation when “in country” lack force in the expatriate context. As political life has a fundamentally social core, social networks *could* foster expatriate political participation if they linked less politically attentive migrants to those more politically engaged. In the absence of a history of expatriate engagement, that group is often small. Moreover, settlement may lead to spiralling disengagement, with even areas of high ethnic density lacking the ethnic institutional completeness needed to stimulate

engagement and political messages still weaker where lower ethnic densities prevail. Absent clear signals and the examples of others, motivations to participate may not suffice, as indicated by a study of immigrants in transit across the U.S.-Mexico border, who reported considerable interest in expatriate voting, but little inclination to invest effort or time in voting (Valle 2005).

“In country”, political leaders and organizations increase participation by mobilizing voters, a capacity often lacking in the expatriate situation. Campaigning on foreign soil is expensive, especially if the former is a developing and the latter a developed society; living abroad, migrants are missing from the electoral registers used to identify and activate likely voters. Emigration states also hesitate to promote cross-border campaigning, since visible manifestations of *emigrants’ home country* loyalties might impede *host society immigrant* acceptance (Ostergaard-Nielsen 2003). Indeed, even states disposed towards multiculturalism, such as Australia (Battiston and Mascitelli 2008) and Canada (Foreign Affairs and International Trade Canada, 2011), have looked askance at recent extensions of expatriate voting, as infringing on sovereignty and raising issues of dual loyalty.

Political incorporation:

Beginning as aliens excluded from the polity, immigrants are nonetheless exposed to political messages broadcast to a wider audience. They are also affected by government policies, motivating them to attend to receiving society politics and to participate in various ways (Leal 2002) even if electoral participation is barred. For those eligible to acquire receiving society citizenship, naturalization enables more extensive political engagements in turn possibly displacing an earlier, imported sense of home society membership.

Identification:

Allowing electoral participation is a means of retaining emigrant loyalty for sending states that seek to connect with emigrants abroad. However, this desire to engage *emigrants* faces concrete obstacles entailed in implementation. In this case, the difficulty is identifying eligible expatriate voters. Documenting eligibility is a standard feature of all voting systems. However, in exiting the home state emigrants also leave its documentary regime, making it more difficult to provide proof of national identity and eligibility to vote.

Indeed, identifying documents can cause migrants more harm than help. Since destination states need to discover a migrant's nationality in order to determine the target state for deportation, undocumented immigrants may obliterate identity documents to obstruct deportation.

Sociological factors:

In addition to these distinctively *political* factors, changes in cross-border social structures may curb interest and involvement in home country politics. International migrations inherently yield ties from receiving to sending states, but those decline with time. As social relations shift from home to host societies, on-location costs grow, raising the burden of cross-border exchanges. The same motivation impelling migration – the search for a better life – also encourages the adoption of new competencies and practices, which yield rewards in the places where the migrants live (Alba & Nee 2003), but are likely to complicate interactions with home society contacts.

Countervailing Pressures:

Of course, not *all* pressures work in the same direction.

Sending state policies: Movement to another state frees migrants from obligations to the home state, but home states retain obligations to their emigrants. Embassies and consulates are outposts of extraterritorial sovereignty where states can interact with nationals abroad. Moreover, international law requires receiving states to allow sending states to fulfill their duties to citizens abroad.

Through consulates, governments provide myriad services to persons who live outside the territory, without renouncing citizenship. As argued by Gonzalez Gutierrez, the architect of Mexico's effort to connect with its emigrants in the United States, these activities make the consular service "the fundamental glue of the efforts of rapprochement...the vector where the communities of migrants...and the offer of cooperation converge" (2006:23). As emigrants often need to verify identity in the places where they live and the provision of identity documents is a protected consular service, furnishing identity documents may provide a means of reconnection. The *matrícula consular*, a consular identification card issued by Mexico to millions of immigrants in the United States, provides an illustrative case.

Cross-border connections: Cross-border ties comprise part of the migration experience itself: the things that flow across political frontiers -- information, resources, support -- help bind family members separated by space. While ties tend to erode with time, many migrants remain connected, sending back remittances, travelling home, and communicating with home country relatives and friends. These contacts may provide the context in which political information can be transmitted, spurring an interest in home country politics.

Moreover, migration may trigger homeland responses, *directly* transmitting political signals. Recurrent return visits, as in the annual pilgrimages made by countless Mexican

migrants for a one week celebration of their hometown's patron saint (Massey et al. 1987:143-145), can facilitate contact with homeland political leaders, who make their presence known to otherwise absent sons and daughters (Fitzgerald 2009). While politics may generate little rank and file interest, resources mobilized by the minority of migrant activists may gain the attention of homeland political leaders – giving them additional reason to connect with migrants whenever possible. Last, the migratory circuit may fortify home community membership, as exemplified by the growing number of hometown associations. Though locally focused, oriented towards philanthropy, often abjuring partisan politics altogether, these organizations can transform initially civic engagements into involvements of a distinctively political sort (Fox 2005).

Political incorporation: *Contrary* to the view articulated above, acquiring receiving country citizenship may stimulate intensified home country engagement, as suggested by research that has shown naturalized citizens to be more, *not* less involved in cross-border engagements (Guarnizo et al. 2003). Growing acceptance of dual nationality seems to allay suspicions of dual loyalty, removing an impediment to involvement in home-country politics. As receiving country citizenship yields the right to cross borders at will, it also facilitates the face-to-face contacts most likely to sustain home-country identities. Likewise, ethnic lobbying provides a socially approved means of maintaining dual home *and* host ties while motivating sending states to connect with nationals.

These factors notwithstanding, we argue that the distinctively *political* nature of population movements across borders, and not just the social processes involved in settlement and the acquisition of host society cultural competence, impedes expatriate political participation. *International migration systematically weakens connections between emigrants*

and sending states: sending states lack organizational capacity in the place where migrants reside; migration limits the political communications required for mobilizing and informing an electorate. Examining the experience of Mexican immigrants, polled in the United States on the eve of the last Mexican presidential election, we show how these factors weakened emigrants' ties to Mexico's polity, impeding potential electoral participation.

BACKGROUND: THE MEXICAN CASE

Expatriate voting emerged on Mexico's political agenda in the 1980s as democratization generated opportunities for migrant activists. These activists provided a platform for candidates dissenting from the country's once dominant party, the *Partido Revolucionario Institucional*, and later lobbied for home-country rights. A 1996 overhaul of Mexico's electoral system formally "opened the possibility of exercising the external vote" (Calderon Chelius 2003:226); expatriate voting was finally approved in 2005.

The legislation allowed Mexicans abroad to vote in Presidential elections only; it prohibited candidates and parties from campaigning abroad; it mandated postal voting, rather than at consulates; it limited participation to migrants already possessing the electoral credential, available only in Mexico, as opposed to the *matrícula consular*, available in the United States; it required eligible voters to send, via registered mail, three and half months before the beginning of the most intensive period of campaigning, a written request to be included in a register of voters abroad. Much to the disappointment of vote activists, only 40,786 emigrants registered to vote, 80 % of whom later cast a ballot (Navarro and Carillo 2007). A variety of factors may have restricted participation to such a small fraction of the emigrant population: the heavily undocumented nature of Mexican migration and the low socio-

economic background of the migrants; the fact that the right to vote from abroad had been granted shortly before the election, reducing the likelihood that information about voting procedures could have been fully disseminated; and most importantly, the very design of legislation, which, while allowing expatriates to vote...made it practically difficult for them to do so” (McCann et al. 2009:145).²

However, this paper neither seeks to explain why Mexico adopted the particular system it chose, nor why so few emigrants registered and eventually voted. Rather, we focus on the more general conditions affecting eligibility to vote and knowledge of voting procedures and requirements. Given the protracted, controversial debate over expatriate voting, the increasingly competitive nature of Mexico’s elections, the size of the Mexican population living in the United States, the density of its settlements, the robust condition of the Spanish language media, and the intensity of cross-border communications, the context confronted by Mexican immigrants in the United States was one likely to promote both interest in home-country politics and awareness of expatriate voting and its requirements, the latter’s complexities notwithstanding. Reinforcing those factors is the unusually large scale of Mexico’s consular infrastructure in the United States (including 50 consular offices) its aggressive efforts to provide emigrants with both protection and a broad array of services, thus reinserting the sending state into the emigrants’ lives. Consequently, this is a case well-suited for the theoretical issues at stake, involving impediments but also numerous ingredients likely to increase emigrants’ capacity to connect with the home-country polity.

DATA, VARIABLES, ANALYSIS

This paper analyzes the 2006 Pew Hispanic Center “Survey of Mexicans Living in the U.S. on

Absentee Voting in Mexican Elections”, involving Spanish and English telephone interviews with a representative sample of 987 Mexican-born adults, aged 18 and older, living in the United States. Interviews were conducted from January 16, 2006 (one day after registration closed) through February 6, 2006.

Dependent variables

Credencial electoral: Mexico’s democratization led to the formation of a new electoral system, autonomous from the government and designed to maximize transparency and reduce fraud. A new electoral management body issued a tamper-proof, voter registration card, the *credencial para votar con fotografía*, or electoral credential, and established an electoral registry, which reproduced the photograph appearing on each credential (Becerra et al. 1997).

Whether in Mexico or abroad, possession of the credential is required to vote; however, that document could only be obtained in Mexico. Moreover, as the credential was not issued until the early 1990s, long-term migrants could not have brought it with them. An expert commission, assembled by the *Instituto Federal Electoral*, estimated that at most 1.5 million of the then roughly 10 million migrants living in the United States possessed a credential (Instituto Federal Electoral 1998 [2004]: 36). Later estimates suggested that 2.4 to 4 million migrants might possess the credential (Santibañez Romellon 1998:411) a projection consistent with responses to this survey.

Knowledge of election procedures: We analyzed six questions regarding respondents’ knowledge of the election and election procedures: whether respondents knew (1) the year of the election; (2) its month; (3) that immigrants had the right to vote; (4) that there was a

deadline for registration; (5) the deadline's date; (6) whether they had some knowledge of specific registration procedures.³ We grouped the questions into two dimensions. The first, involving items one to three, relates to basic knowledge, requirements common to expatriate voting systems regardless of specifics, making very modest informational or attentive demands. As national elections in Mexico are held in July every three years, presidential elections are held in July every six years, the presidential term itself is referred to as "el sexenio", and a nationally representative surveys show that almost 89% of Mexicans surveyed (in Mexico) knew the correct the length of the presidential term, these items pick up matters that almost any emigrant modestly interested in Mexican politics should know.⁴ As the build-up to the new electoral law entailed a long, much publicized controversy, knowing that emigrants now possessed the right to vote similarly entailed modest demands on political information. The second dimension measures the specific knowledge needed to participate in this particular election, thus indexing the greater knowledge requirements imposed on potential emigrant voters by Mexican electoral law.

Independent variables:

- *Settlement:* We expect that home-country attachments weaken with settlement, indexing settlement with a variable measuring respondents' years of U.S. residence. To allow for diminishing or accelerating effects we include a quadratic.
- *Acculturation.* We use language to index acculturation, hypothesizing that shifts from mother to dominant tongue weaken interest in home-country matters. We capture English language proficiency using a question asked of persons interviewed in Spanish, querying their ability to "carry on a conversation in English, both

understanding and speaking,” with a four category response option of “very well, pretty well, just a little, or not at all.” We classify all persons interviewed in English (N=37) as speaking English very well.

- *Legal status:* The Pew survey first asked respondents whether they were naturalized citizens; it then asked the non-citizens whether they were legal immigrants with permission to stay permanently, next asking all others whether they were legal temporary visitors, and last, asking remaining respondents whether they were undocumented. We anticipate that acquisition of U.S. citizenship will yield negative effects on possession of any Mexican identity document as well as knowledge of election procedures. We include a set of dummy variables where naturalized U.S. citizens comprise the omitted category.
- *Social and economic resources:* Higher SES is generally associated with higher levels of knowledge of and participation in politics. We enter education as a set of dummy variables: primary (omitted), some high school, high school degree and any post high school. We also include household income before taxes, differentiating \$30,000 (omitted), \$30,000 to \$50,000, and more than \$50,000.
- *Cross-state connections:* We use information about phone calls, remittance behavior and travel home to assess how routine cross-border activity affects expatriate voting. We divide respondents into those making phone calls to Mexico at least once a week; at least once a month; and less frequently (reference category). We construct a four-category variable distinguishing between non-travelers (reference group), one time, two times, and three or more times travelers. We distinguished among persons remitting once in the prior year, several times, once a month, and not at all.

- *Participation in Mexican civic organizations.* The survey asked if respondents belonged to a civic organization, sports team, or Mexican emigrant social club. We hypothesize that those responding yes will be more likely to possess identifying documents and be more knowledgeable of electoral procedures.
- *Location of a Mexican consulate:* We expect respondents living in cities with permanent consulates to be more likely to possess the credential and to be more knowledgeable about election procedures
- *Possession of a matrícula consular:* Consulates provide identity documents, a service fostering reconnection between the home state and its emigrants. Though Mexico has been providing consular identity cards to nationals residing in the United States since the late 19th century, efforts to issue a consular card greatly intensified after September 11, 2001. Shortly thereafter, Mexico introduced the *matrícula consular de alta seguridad*. Between 2000 and 2008, Mexico issued roughly 7 million *matrículas* (Secretaria de Relaciones Exteriores 2008:239), reflecting the card's widespread acceptance by U.S. financial institutions, states, and localities. We expect respondents possessing the *matrícula* to be more likely to possess the credential and to be more knowledgeable about procedures.
- *Ethnic density:* As information about politics circulates through contacts and ethnic densities are conducive to political organizations that could engage in mobilization, we expect a positive relationship between concentration of recent co-ethnic immigrants and our outcome variables. We include information from the Census 2000 STF 3 file on the share of the population in each zip code that is Mexican born, arrived after 1990 and lacks US citizenship.

- *Interest in and views toward home-country politics:* Possession of documents and knowledge of election procedures are likely to be affected, both by knowledge of Mexican politics, and views towards the Mexican political system and its parties. We use a question about following politics in Mexico to measure interest in home-country politics: closely, somewhat closely, not closely (reference group). Indicators of views of the Mexican political system come from questions about “the way in which Mexican political institutions function” (very good, good, fair, bad, very bad). For simplicity, we collapse “very good and good” and “bad and very bad”. We hypothesize that persons with more favorable views will be more likely to possess an election credential and to be knowledgeable about electoral issues.
- *Gender and Age:* Hypothesizing that men will be more likely than women to have a credential and to be more knowledgeable about election procedures, we include a dummy variable for sex. Following the literature on political science, showing a strong relationship between age and political participation, we expect age – measured as a continuous variable – to yield positive effects on possession of the credential as well as knowledge of election procedures

Analysis

As possession of a document is a dichotomous variable, we use logistic regression to estimate the odds of possessing the *credencial electoral*.

To assess effects of our independent variables on basic knowledge about the election and on specific knowledge about the registration procedure we use a structural equation model with two latent variables. Corresponding to a particular type of knowledge, the latent variables are

identified by responses to questions relating to the relevant construct, and then regressed on observed independent variables. Structural equation modeling allows us to specify the relationship between observed dependent variables and the two types of knowledge and simultaneously estimate the factor loadings the correlation between the two types of knowledge and the regression equations. Our model also takes measurement error into account by treating answers to questions about election and registration procedures as imperfect indicators of the underlying unobserved knowledge variable. These models are also known as MIMIC (Multiple Indicators Multiple Causes) models. Figure 1 presents a schema of the model. The variables relating to settlement and transnational activity (left side) are seen as influencing the two types of knowledge (circles in center), which in turn are identified by a set of questions.

The equations for the model can be written as follows:

$$Y = \Lambda\eta + \varepsilon$$

for the measurement model, where Y represents a vector of indicators of the latent variables, Λ is a matrix of factor loadings of the latent knowledge variables η . In our case the indicators of the latent variable are binary responses. The structural part of the model is

$$\eta = \Gamma X + \zeta$$

where Γ are the regression coefficients of the latent variables on X , the observed covariates and ζ is the residual variance (error term) of the latent variable not accounted by the regressors. The residual variance ζ and the unique factors ε are assumed to be uncorrelated. Since the observed dependent variables are binary we use a weighted least squares estimator to obtain parameter estimates.

Missing data:

While missingness on most variables is very limited, questions about income and legal status produced higher refusals, with just over 25% declining to state income and about 7.5% legal status. For 19% we are missing information on the ethnic density of their neighborhood. We use multiple imputation, allowing us to retain the full sample size and avoiding bias resulting from listwise deletion.

RESULTS

Descriptive Statistics

Table 1 presents means and frequency distributions of all variables. 31% possessed the *credencial electoral*. 78% knew about the right of Mexican emigrants to vote; 55% knew that Mexican authorities set a deadline to register. Less than half knew the year of the election; 25% knew something about registration procedures (25%); still fewer correctly answered the more demanding questions about the month when the election was held (19%) and the deadline for registration (15%).

Most respondents came from low socioeconomic backgrounds: 61% did not complete high school; 74% lived in households with annual incomes below \$ 30,000. Most were recent arrivals, with 50% residing in the U.S. for 12 years or less and 25% for 6 years or less. Only a fifth reported speaking English fluently; 30% possessed no English language proficiency at all. The respondents maintained regular connections to Mexico, but limited face-to-face contact: almost 70% reported *no* travel to Mexico in the previous year. Phone calls to Mexico occurred frequently: 46% called weekly; 33% called monthly. Many remitted frequently: almost 60% sent money at least once in the last year and 20% remitted monthly.

Other variables pointed to connections to the Mexican state and exposure to Mexican

immigrant civil society. One third lived in cities with a Mexican consulate; 46% possessed a *matrícula* – above the share with a credential. While most respondents lived in zip codes where recent immigrants from Mexico averaged only 7%, concentrations of recent arrivals were as high as 33%. Only 10% belong to a Mexican civic organization.

Stated interest in Mexican politics is high but opinion of it is generally low. The great majority (75%) claimed to follow Mexican news closely or somewhat closely. Nonetheless, only 13% expressed a favorable opinion of Mexican political institutions.

Multivariate Analysis

Electoral credential: Possessing the credential is almost entirely a function of SES, settlement, and age with legal and citizenship status, and acculturation largely falling out (Table 2). With other variables held at their mean value, almost one-third of better-educated respondents (31% for college and 29% of High School graduates) but under a fifth of their primary school counterparts hold the credential. As that document can be brought from Mexico, but *not* obtained in the United States, settlement yields opposite effects: the probability of possessing the credential quickly and steadily declines as U.S. residence increases. With other variables held constant, the credential is held by 62% of new arrivals but by only 11% of those with 25 years of residence and only 6% of those with 35 years of residence. Results for the connectivity indicators are generally positive; however, only the coefficient for those few respondents traveling to Mexico three times or more in the previous year comes close to conventional levels of statistical significance ($p=.101$). Age positively affects possessing the credential: those 10 years older than the mean respondent were five percentage points more likely to hold the credential.

Of variables indicating the presence of home-country influences only the possession of the *matrícula* is associated with the likelihood of possessing the voting credential. *Ceteris paribus*, those with the *matrícula* are about 13 percentage points more likely to possess the credential. Neither the presence of a consulate nor contact with Mexican civil society, as indicated by concentration of recently migrated compatriots or membership in Mexican civic organizations affects possession of the *matricula*.

We note an alternative explanation: because earlier migrants would not have obtained the electoral credential prior to migration, as it was not introduced until the 1990's, the association between years in the United States and possession of the credential could reflect a cohort, as well as a settlement effect. Unfortunately our data do not allow us to conclusively adjudicate between the two. When introducing a dummy variable into our regression, distinguishing those who came before 1990 from migrants who moved later, we find that the post-1990 respondents are more likely to have a voting credential. As the coefficient is not statistically significant (t-value 1.08) and introduction of the period dummy also leaves the coefficient on years in the US unaffected, we conclude that both cohort and settlement factors are likely to be at work.

Knowledge of Mexican election procedures: The second set of columns in table 2 summarizes the MIMIC model for knowledge of electoral issues. To facilitate comparison we standardized the variance of the latent variables to 1. Three items -- knows the year of the election, the month of the election, whether immigrants can vote -- identify the first latent variable of basic knowledge. Three other variables -- knowing whether a registration deadline exists; knowing the date of the deadline; having some knowledge of the registration procedures -- identify the

second latent variable, special knowledge about the registration.⁵ As indicated by commonly used model fit indices, this model is appropriate for our data. While the two types of knowledge are substantially correlated (.69), the small standard error of the estimate (.06) indicates that the correlation is significantly different from 1. Thus, this first step in the structural equation analysis supports our hypothesis that the questions related to such basic features of the electoral system as the year and month of the presidential election tap into knowledge significantly different from those related to the complicated voting procedures that Mexico imposed.⁶

The regression of the latent variables on our independent variables shows that settlement does not yield significant effects on basic knowledge. While years of U.S. residence and knowledge of registration procedures are positively related ($p < 0.1$), the quadratic coefficient is negative, indicating no significant effect. Net of other factors, however, naturalized citizens appear to score lower on basic knowledge than undocumented respondents and lower ($p < 0.1$) than temporary residents on know-how about registration procedures.

Connectivity indicators influence knowledge of procedures – though only for the most connected. The most frequent travelers to Mexico scored higher on both areas of knowledge than did respondents who had not traveled in the previous year; those remitting several times yearly also had higher levels of knowledge in both areas.

SES yields predictable effects on both knowledge dimensions. Compared to respondents possessing primary school educations, those with some high school education and those with post-secondary education were both more likely to have higher knowledge about expatriate voting. Though income did not influence knowledge of basic aspects of the election, it did affect knowledge of electoral procedures: those reporting household incomes between \$30,000 and \$50,000 were more likely to be knowledgeable than those from lower income households.

Furthermore, the presence of home-country influences on U.S. soil does *not* shape knowledge. Neither those possessing a *matricula consular* nor those living in a city with a consulate, nor those belonging to a Mexican civic association were more likely to know about election procedures.

Variables indexing opinions towards Mexican political parties and attention paid to Mexican news also show significant effects. Persons following Mexican news “somewhat” or “very” closely scored higher on both areas of knowledge than those who didn’t follow closely. Respondents viewing Mexican political institutions negatively knew more about registration procedures than those with positive views. The regressions on basic knowledge yield a similar pattern, but with lower point estimates that fail to reach statistical significance. Findings for political interest variables are analogous: those paying greater attention to Mexican news have higher levels of knowledge; however, point estimates of the association are larger for knowledge about registration. Finally, older migrants and men score higher on basic knowledge, but not on specific knowledge.

DISCUSSION:

Path-breaking work by anthropologists launched the “transnational perspective”, underscoring the ways in which international migration recurrently produces a spillover of ideas, goods, and civil and political engagements across national boundaries. Cross-state attachments linking migrants to significant others back home are indeed prevalent, comprising an integral part of the migrant reality. A smaller proportion maintains a continuing engagement with home-country politics, whether attending to home-country politics or engaging in more active, resource-taxing activities. Residing in a richer land and enjoying greater freedoms, migrants often leverage

resources that compel homeland political leaders to attend to the preferences of citizens living abroad, as evidenced by the growth of expatriate voting systems. While the core of migrant activists can thus pull politics across borders, the views and behavior of rank and file immigrants need attention before deciding whether the homeland polity can be expanded to include nationals living abroad or instead remains mainly confined to the territory of the home state.

Extraterritoriality and identification: States increasingly follow “their” emigrants onto receiving soil territory. Although policies of “diaspora engagement” (Gamlen 2008) take many forms the development of expatriate voting systems is an increasingly common element.

The ability to establish eligibility is a *precondition* of electoral participation. This is generally done by furnishing state-issued documents, a requirement hard to fulfill from the territory of another state. As we show, only a third of the respondents possessed the voting credential needed to cast a ballot. Net of other factors, possession was higher among the small, selective group of more educated respondents. Though widely shared, homeland ties had no systematic relationship to possession of the credential. Only the small group of especially frequent travelers may be more likely to possess the electoral credential than those who never traveled during the prior year. Reflecting the fact that the credential has no use in the United States as an identity document, possession falls sharply as years in the U.S. rise. Thus, sociological processes associated with settlement weakened these emigrants’ institutional connection to their home polity, reducing their likelihood of possessing the identification provided by the home state, thereby making them ineligible to vote.

Knowledge: Documentary forms of identification provide states with means of both caging *and* embracing their members (Torpey 2000). In leaving the territorial “cage,” migrants also diminish sending states’ ability to embrace those of their people living abroad.

While one cannot cast a vote without proving eligibility, eligible voters are unlikely to cast a ballot without knowledge of election fundamentals – at the minimum, when, where, and how to vote. When “in country” political parties and electoral authorities work hard to diffuse that information, but that resource is unlikely to spill over into the territory of another state where neither parties nor electoral authorities are active.

Mexico’s expatriate voting law significantly increased knowledge requirements, requiring potential voters to know details of a complicated process. Hence, finding that only a quarter knew “something” about registration procedures and even fewer knew the deadline for registration provides no surprise. However, one might expect the emigrants to be familiar with well-established characteristics of Mexico’s electoral system, knowledge that they might have brought with them or could have obtained via attention to Spanish-language homeland news stories on television or in newspapers. Instead, respondents were relatively unfamiliar with even one of the most basic aspects of Mexico’s electoral system, namely *when* elections took place. While presidential elections occur every six years, a fact known by almost 90% of Mexicans *in Mexico* barely half of this sample of Mexicans *in the U.S.* knew that 2006 was an election year. Those elections are *consistently* held in July, as are the legislative elections that take place every three years. Yet when asked in January 2006, more than 80% of respondents did not know that elections would be held in July of that year.

Furthermore, few mechanisms effectively transmitted Mexican political information across borders. Most respondents remained closely connected to relatives at home and

differences in the intensity of home-country ties had little effect on levels of knowledge, except for the small minority maintaining especially intense cross-border activities. The few (8% of our sample) traveling to Mexico three or more times *in the prior year* knew more about electoral procedures than those who did not travel back home at all; however, the latter –the majority of the sample – knew as much about election procedures as those who had traveled back once or twice (25% of the sample). Similarly, those calling home regularly seemed to know more about basic electoral procedures ($p > .10$), but were no more likely than others to have the detailed knowledge about registration procedures required to cast a vote abroad. Remitting also yielded inconsistent results: respondents remitting several times yearly had more knowledge than those remitting occasionally or not at all; however, the latter were no less knowledgeable than those remitting with the greatest frequency. Contrary to claims that acquiring host country citizenship facilitates engagement with the home-country polity, *basic knowledge* of electoral procedures was *lowest* among emigrants who had acquired U.S. citizenship. By contrast, respondents living in areas of high ethnic density were no more knowledgeable than those living where fewer co-ethnics are found. More important than connectivity were the socio-economic resources enjoyed by the selective group of respondents with more education and higher earnings than the modal respondent and were the most knowledgeable.

Lack of information does not imply complete disengagement. Most respondents follow Mexican news; these respondents were more knowledgeable than the less attentive, especially regarding more detailed aspects. On the other hand, those claiming to follow news closely were relatively unfamiliar with the basics of *when* the election would take place: only 57% of respondents who said they followed Mexican news closely knew that 2006 was a presidential election year; still fewer – 27% – also knew that the election would be held in July and that

expatriates had the right to vote. In addition, cynicism toward politics did not yield the negative effect hypothesized earlier. Rather, this survey suggests that respondents with a more negative assessment of Mexican institutions were more knowledgeable than those more positively inclined.

CONCLUSION

Given the spread of expatriate voting systems, the contentious political debates over their organization, and the growing scholarly literature devoted to this topic, study of emigrants' *capacity* to participate in homeland electoral politics sheds light on the political dimensions of "immigrant transnationalism." Responding to pressure from abroad (Itzigsohn 2000), expatriate voting provides an ideal case of "transnationalism from below" (Smith and Guarnizo 1998). As an instance of "transnational citizenship" (Fox 2005), it also exemplifies the claim that migrants "...may continue to participate in the daily life of the society from which they emigrated but which they did not abandon" (Glick-Schiller 1999:94). Since expatriate voting entails an extra-territorial activity, organized by the home state, but unfolding on destination state territory, it offers a fruitful opportunity for transforming the issue of "the relative importance of nationally restricted and transnational social fields," whose centrality is highlighted by Levitt and Glick-Schiller, into a question of "empirical analysis", just as these authors suggest (2004:1009).

Although Mexico to U.S. migration has been the foundation on which much social science theorizing about migration has been built (Massey et. al 1998), generalizations from this experience need to be sensitive to particularities of the case, a consideration that also holds to the study of expatriate voting. To begin with, this is a case of migration to a developed, democratic state, where foreigners can gain access to citizenship; any generalizations from this

case are best applied to expatriates relocated to states of this type.

Moreover, some of the salient characteristics of Mexican migrants, most notably their generally low levels of education, depress interest in and readiness to vote. As we find in our analysis, educational achievement is associated with more knowledge and higher likelihood of possession of voting documents, implying that expatriate interest in homeland matters may be greater among migrant streams that are positively selected on these criteria such as Indians in the United States. The Mexican activists who vigorously and strategically advocated for the vote had exactly these traits, as they were an unrepresentative cross-section of longtime U.S. residents, hometown association and (Mexican) state federation leaders and entrepreneurs, professionals, journalists, and academics (Escamilla-Hamm 2009), of whom the leaders possessed the legal status and financial resources needed to repeatedly return to Mexico for face-to-face lobbying of state officials. On the other hand the increasingly contested nature of Mexican elections, the intensity of Mexico's effort to connect with its emigrants, as well as the density of the emigration and its ethnic infrastructure, likely had the opposite effect of disseminating information about electoral and voting procedures. Also since presidential elections, generate greater interest than legislative contests, they should also have made respondents more attentive.

Expatriate voting presents both sending states *and* emigrants with *generic* problems, inherent in the extraterritorial nature of the activity itself, which in turn impede participation, weakening both needed institutional ties and the mechanisms disseminating political information. First, expatriate voting systems confront a series of challenges: how to guarantee universal, equal, and secret suffrage, how to regulate party competition, and how to prevent offences against electoral law. Sending states can respond in a variety of ways, but each entails

trade-offs. Postal voting and even more so, internet voting, reduce costs, yield the greatest coverage, and appear to be expatriates' preferred option, but both involve security risks. Voting in consulates enhances security, but at higher cost and to the detriment of voters in areas of lower immigrant density. Contracting electoral services to local electoral districts in the host society lowers costs but lets the receiving state control electoral management, raising issues of national autonomy and sovereignty.

Though one might hypothesize that the novelty of the 2006 election, results from the presidential election of 2012 suggest otherwise: despite significant efforts, by Mexico's electoral authority, at building electoral awareness, votes cast from the United States barely moved, rising by just over 1,000 (Instituto Federal Electoral, 2012). Likewise, while Mexico's electoral laws certainly impede expatriate voting, participation rates are generally depressed. As noted in *Voting from Abroad* (Ellis et al. 2007:31), "rates of registration and turnout among external voters are almost always lower than they are in-country," a generalization that holds true in long established systems with well-known rules of the game, such as France's or Sweden's, or newer systems, such as those sprouting elsewhere in Latin America. The pattern holds even when the expatriate electoral system is relatively friendly – as demonstrated in the 2004 election for President of the Dominican Republic, when migrants cast less than 1% of votes (Itzigsohn and Villacres 2008: 672). As suggested by Table 3 the Dominican experience is well within the norm, as expatriate participation among a variety of countries fluctuates somewhere between 0.5% and 5%, well below levels recorded in-country. Moreover, the two exceptions – expatriate voting in the 2006 Italian Presidential election and the 2011 Peruvian Presidential election – proves the rule. Only in Latin America, where the grandchildren of earlier immigrants had recently acquired Italian citizenship in order to enter the EU and the

influence of local ethnic elites remained extraordinarily strong, did Italian expatriate voters turn out in significant numbers (Tintori 2011). In the Peruvian case, expatriate voting had been obligatory until shortly before 2011, which might explain why 40 percent of Peruvians living abroad cast a ballot. Even in this case, however, participation fell far below the 85 percent level registered in-country, with a much higher prevalence of blank or null votes among expatriates (23 percent v 12 percent) suggesting a higher level of alienation.⁷

Consequently, the extraterritorial nature of expatriate voting consistently entails real, non-trivial costs. According to the *Handbook on Voting from Abroad*, “External voting processes involve logistical arrangements that often cost more per voter than elections organized in the home country” (Ellis et al. 2007:262). Mexico’s initial experiment in expatriate voting cost \$27.7 million (p. 266), amounting to just under \$1200 per expatriate vote cast. While start-up operations are always expensive, other experiences point to significant financial demands: thus, the costs entailed in each Canadian expatriate vote are four times those disbursed for in-country votes (Lesage 1998:105), expenditures that are particularly striking as surveys indicate that Canadians abroad lack a strong desire to vote (Asia Pacific Foundation of Canada, 2007). Whereas Canada or France are rich countries whose emigrants live abroad under conditions comparable to those at home, the same does not hold for the emigration countries of the developing world. Mexico and similar home governments *could* invest in infrastructures that encourage expatriate voting, but doing so would reallocate resources from more deprived stay-at-homes to more prosperous migrants, living in more secure societies with more abundant public goods.

Similarly, all prospective voters, whether in-country or abroad, have to prove eligibility, but emigrants are less likely to possess the relevant documents, especially if they serve no

function in the state where they reside. The Mexican government could have done for the *credencial* what it did for the *matrícula*: facilitate, even encourage, its acquisition in the U.S. But the *matrícula* is wanted because it assists *immigrants* to resolve their identity problems in the host society, *not* because it helps *emigrants* re-engage with Mexico. Furthermore, the controversies provoked by the *matrícula* -- described by the restrictionist Center for Immigration Studies as “advanc[ing] Mexico’s immigration agenda” (Dinerstein 2003) – suggest that *some* Americans would strongly object to higher profile efforts at reconnecting Mexican immigrants with their home-country political system. Indeed, this type of reaction was precisely the scenario feared by Mexico’s foreign ministry (Santamaria Gomez 2007), which worried that U.S.-based efforts to disseminate the electoral credential might raise questions about the *matrícula consular*, in whose credibility an enormous investment had been made.

As for the migrants, their decisive vote is likely to be the one that they previously made with their feet. While that vote neither severs ties to significant others at home nor ends homeland loyalties, it yields distance from the home state. Moreover, the challenges of life in a new land tend to re-orient concerns, diminishing interest in homeland matters, which also receive reduced attention in the new, foreign environment. As for expatriate voting, it may have a feel-good quality, but is unlikely to do much for the migrants in the here and now. While the homeland state can help with some of those practicalities by providing identity documents, these are useful only insofar as the host society permits. In the end, the political disruption produced by international migration is too much to sustain an extraterritorial electorate, which is why immigrants find themselves caged – connected to kin and friends still in their home country, but detached from the polity they left behind.

References:

- Alba, Richard and Victor Nee. 2003. *Remaking the American Mainstream : Assimilation and Contemporary Immigration*. Harvard University Press.
- Asia Pacific Foundation of Canada. 2007. *Global Canadians*. Vancouver
- Battiston, Simone and Bruno Mascitelli. 2008. "The Challenges to Democracy and Citizenship Surrounding the Vote to Italians Overseas." *Modern Italy* 13: 261-80.
- Bauböck, Rainer. 2007. "Stakeholder Citizenship and Transnational Political Participation: A Normative Evaluation of External Voting." *Fordham Law Review* 75: 2393-447.
- Becerra, Ricardo, et. al. 1997. *La Reforma Electoral de 1996*. Mexico City: Fondo de Cultura Económica.
- Calderon Chelius, Leticia. 2003 *Votar en la Distancia*, Mexico City: Instituto Mora.
- Cariot, M. Bernard and M. Paul Clave. 2009 *Les Francais etablis hors de France: leurs attentes, leur besoins*. Conseil Economique, Social, et Environmental, <http://www.ladocumentationfrancaise.fr/var/storage/rapports-publics/094000062/0000.pdf>, last accessed 10/5/2012.
- Dinerstein, Marti. 2003. *IDs for Illegals: The "Matrícula Consular" Advances Mexico's Immigration Agenda*. Center for Immigration Studies, Washington, DC.
- Ellis, Andrew, et. al, 2007. *Voting from Abroad: The International IDEA Handbook*. Stockholm: International IDEA.
- Escamilla-Hamm, Patricia. 2009. "How transnationalism facilitates the participation of Mexican immigrants in U.S. Politics," *Migracion y desarrollo*, 12: 89-114.
- Fidrmuc, Jan and Orla Doyle. 2004. *Voice of the Diaspora: An Analysis of Migrant Voting Behavior*. William Davidson Institute Working Paper #712.
- Fitzgerald, David. 2009. *A Nation of Emigrants: How Mexico Manages its Migration*. University of California Press.
- Foreign Affairs and International Trade Canada. 2011. *Policy on Foreign Elections in Canada and Foreign Electoral Constituencies*. <http://tinyurl.com/expatvoteca2011>. Last accessed 9/26/2012.
- Fox, Jon. 2005. "Unpacking Transnational Citizenship." *Annual Review of Political Science* 8:171-201.
- Fraga, Luis R. et al. 2006. *Latino National Survey (LNS)*. [Computer file]. Ann Arbor, MI: Inter-university Consortium for Political and Social Research [distributor].
- Gamlen, Andrew. 2008. "The Emigration State and the Modern Geopolitical Imagination." *Political Geography* 27(8):840-56.
- Glick-Schiller, Nina. 1999. "Transmigrants and Nation-States." Pp. 94-119. *The Handbook of International Migration: The American Experience*. Charles Hirschman, et. al., editors. Russell Sage.
- González Gutierrez, Carlos. 2006. "Introducción: El Papel de los Gobiernos." Pp. 13-42.

Relaciones Estado-diáspora: La perspectiva de América Latina y el Caribe. Carlos González Gutierrez, editor. Mexico: Porrúa.

Instituto Federal Electoral. 1998 [2004]. "Informe de la Comisión de Especialistas." Pp. 19-106 in *El Voto de los Mexicanos en el Exterior*, ed., G. B. Moreno. Michoacán: Gobierno del Estado de Michoacán.

_____. 2012. *Informe Final del Voto de los Mexicanos Residentes en el Exterior: Proceso Electoral Federal 2012.*

http://www.votoextranjero.mx/c/document_library/get_file?uuid=fce8dbba-63e7-4e1e-946e-e09fd59de581&groupId=10157. Accessed February 18, 2013.

Itzigsohn, Jose. 2000. "Immigration and the Boundaries of Citizenship: The Institutions of Immigrants' Political Transnationalism." *International Migration Review* 34(4):1126-54.

Itzigsohn, Jose and Daniela Villacrés. 2008. "Migrant Political Transnationalism and the Practice of Democracy: Dominican External Voting Rights and Salvadoran Home Town Associations." *Ethnic and Racial Studies* 31:664-86.

Leal, David. 2002. "Political Participation by Non-Citizen Latinos in the United States." *British Journal of Political Science*, 32(2): 353-70.

Lesage, Carol. 1998. "Organización y logística en Canadá." Pp. 101-108. *Conferencia trilateral sobre el voto en el extranjero*. Mexico: Tribunal Electoral del Poder Judicial de la Federación, Instituto Federal Electoral.

Levitt, Peggy and Nina Glick-Schiller. 2004. "Transnational Perspectives on Migration: Conceptualizing Simultaneity." *International Migration Review* 38:1002-39

Massey, Douglas, et al. 1998. *Worlds in Motion: Understanding International Migration at the End of the Millennium*. Oxford University Press.

McCann, James, et. al., 2009. "Absentee Voting and Transnational Civic Engagement among Mexican Expatriates." Pp. 89-108. *Consolidating Mexico's Democracy*. Jorge I. Domínguez, et. al., editors. Johns Hopkins University Press.

Navarro, Carlos and Manuel Carillo. 2007. "Mexico: Safeguarding the Integrity of the Electoral Process." Pp. 189-92. *Voting from Abroad: The International IDEA Handbook*. Stockholm: International IDEA.

Ostergaard-Nielsen, Eva. 2003. "Continuities and Changes in Sending Country Perceptions, Policies and Transnational Relations with Nationals Abroad." Pp. 209-24. *International Migration and Sending Countries*, Eva Ostergaard-Nielsen, editor. London: Palgrave.

Pew Hispanic Center. 2006. *2006 National Survey of Latinos*. Washington DC.

Plutzer, Eric. 2002. "Becoming a Habitual Voter: Inertia, Resources, and Growth in Young Adulthood." *American Political Science Review* 96:41-56.

Santamaría Gomez, Arturo 1994. *La Política entre México y Aztlan*. Culiacán Rosales: Universidad Autónoma de Sinaloa.

_____. 2007. *2006, Emigrantes Mexicanos: Movimientos y Elecciones Transterritoriales*. Culiacán Rosales: Universidad Autónoma de Sinaloa

Santibañez Romellon, Jorge. 1998. "Acerca del voto de los mexicanos en el exterior."

L'ordinaire Latino-Americaine 173-74:163-6.

- Secretaria de Relaciones Exteriores. 2008. *Segundo Informe de Labores*. Mexico City: Gobierno de los Estados Unidos de México.
- Smith, Robert. 2008. "Contradictions of Diasporic Institutionalization in Mexican Politics: The 2006 Migrant Vote and Other Forms of Inclusion and Control." *Ethnic and Racial Studies* 31:708-41
- Smith, Michael and Luis Guarnizo. 1998. *Transnationalism from Below*. New Brunswick: Transaction.
- Suro, Roberto and Gabriel Escobar. 2006. *Survey of Mexicans Living in the U.S. on Absentee Voting in Mexican Elections*. Washington: Pew Hispanic Center.
- Tintori, Guido. 2011. "The Transnational Political Practices of 'Latin American Italians'", *International Migration*, 49:168-188.
- Torpey, John. 2000. *The Invention of the Passport: Surveillance, Citizenship, and the State*. Cambridge University Press.
- Valle, Alejandro. 2005. "El Voto Difícil." Pp. 261-400. *El Voto de los Mexicanos en el Exterior*. Jorge Alcocer, editor. Mexico City: Nuevo Horizonte Editores.
- Wong, Janelle et al. 2011. *Asian American Political Participation: Emerging Constituents and their Participation*. New York: Russell Sage Foundation
- World Bank. 2011. *Migration and Remittances Factbook*. Washington, DC: The World Bank. <http://data.worldbank.org/data-catalog/migration-and-remittances> accessed 2/18/2013.

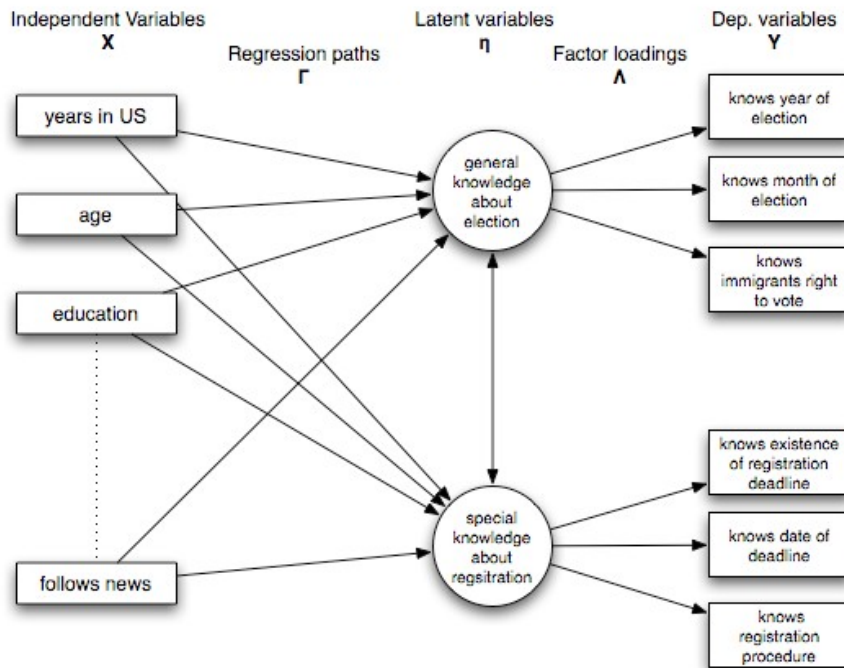


Figure 1: Representation of latent variable (MIMIC) model for knowledge about election and registration procedures. For clarity the error terms for the observed and latent variables are omitted from the diagram.

Table 1: Means and frequency distributions of variables

	Original Dataset	Imputed Data (M=20)
Dependent Variables		
Has Voting Credential	0.31	0.31
Missing	0.00	
Knows year of election	0.45	0.45
Month of election	0.19	0.19
Immigrants can vote	0.78	0.78
Mexican authorities have set a deadline	0.55	0.55
Correct deadline	0.15	0.15
Something about registration procedures	0.25	0.25
Independent Variables		
<i>Settlement</i>		
Mean years in US	15.0	15.0
Status: US citizen	0.25	0.26
Permanent legal resident	0.42	0.46
Temporary legal resident	0.11	0.12
Undocumented	0.15	0.16
Missing	0.07	
<i>Acculturation</i>		
Speaks English: Very well	0.09	0.09
Pretty well	0.11	0.11
Just a little	0.49	0.50
Not at all	0.30	0.30
Missing	0.01	
<i>Socioeconomic Status</i>		
Education: Primary	0.36	0.37
Some High-School	0.23	0.24
High-School	0.24	0.25
Post High-School	0.14	0.14
Missing	0.03	
Income: < \$30,000	0.54	0.74
\$30,000 to \$50,000	0.14	0.19
> 50,000	0.05	0.07
Missing	0.27	
<i>Connection to Mexico</i>		
Travel to Mexico, previous yr: No	0.67	0.67
Once	0.19	0.19
Twice	0.06	0.06
Three times or more	0.08	0.08
Missing	0.00	
Calls to Mexico: less than monthly	0.20	0.21
Monthly	0.33	0.33
Weekly+	0.46	0.46
Missing	0.01	

continued on next page:

Table 1 continued:

Remitted in last year: No	0.42	0.42
Once	0.04	0.04
Several times	0.34	0.34
Monthly	0.19	0.20
Missing	0.01	
Member of Mex. civic org.	0.10	0.10
Missing	0.02	
<i>Presence of home-country influences</i>		
Lives in city with Mexican consulate	0.33	0.33
Has Matrícula Consular	0.46	0.46
Missing	0.01	
Pct. Mexican born non-citizens arrived after 1990 in Zip-code	0.06	0.07
Median	0.10	0.09
Missing	0.19	
<i>Interest and views towards Home Country Politics</i>		
Opinion about Mex. Pol. Institutions: Good	0.13	0.13
Fair	0.42	0.43
Bad	0.32	0.33
No opinion	0.11	0.11
Missing	0.01	
Follows Mexican news: Closely	0.30	0.30
Somewhat closely	0.44	0.45
Not closely	0.25	0.25
Missing	0.02	

NOTE: N=987, survey design weights used for calculations of means and frequency distributions.

Table 2: Models for having voting credential and knowledge about the 2006 Presidential Election

	Has Voting Credential		Knowledge about the Election			
			Basic Facts		Registration	
	Coef.	T	Coef.	T	Coef.	T
<i>Settlement:</i>						
Years in US	-0.14	-4.67 ***	-0.01	-0.88	0.03	1.75 *
Squared	0.00	2.10 **	0.00	0.03	0.00	-1.41
<i>Legal Status: (a)</i>						
Permanent legal resident	0.00	0.00	0.26	1.43	0.27	1.49
Temporary legal resident	0.28	0.64	0.34	1.25	0.49	1.82 *
Undocumented	-0.42	-0.91	0.47	1.88 *	0.35	1.30
<i>Acculturation (b)</i>						
Speaks English very well	-0.33	-0.63	0.02	0.07	0.10	0.37
pretty well	-0.11	-0.25	0.12	0.51	0.07	0.29
just a little	0.21	0.75	0.23	1.47	0.20	1.33
<i>Socioeconomic Status (c)</i>						
Education: Some High-School	0.29	0.92	0.59	3.37 ***	0.51	3.00 ***
High-School	0.58	1.86 *	0.21	1.17	-0.10	-0.57
Post High-School	0.85	2.33 **	0.79	3.55 ***	0.47	2.14 **
Income: 30k to 50k	0.20	0.59	0.34	1.61	0.49	2.15 **
>50k	-0.57	-0.91	0.08	0.33	0.11	0.42
<i>Cross state connections (d)</i>						
Travel, previous yr: once	0.21	0.71	-0.05	-0.35	-0.18	-1.16
Twice	0.02	0.03	0.03	0.11	0.13	0.45
3 times+	0.78	1.62	1.06	4.02 ***	0.64	2.75 ***
Calls to Mexico: monthly	0.54	1.34	0.30	1.45	0.06	0.28
weekly+	0.50	1.27	0.34	1.72 *	0.07	0.37
Remits: once	0.27	0.79	0.11	0.53	0.23	1.23
several times	-0.16	-0.56	0.44	2.74 ***	0.45	2.87 ***
Monthly	0.47	0.97	-0.26	-0.93	0.19	0.63
<i>Presence of home-country influences</i>						
Blgs to Mexican civic org	0.26	0.80	-0.36	-1.59	-0.18	-0.94
Consulate in city	-0.28	-1.16	0.03	0.25	0.12	0.92
Has Matricula Consular	0.78	3.39 ***	0.04	0.35	0.01	0.10
Recent migrant density in Zipcode	2.01	0.86	0.09	0.06	0.48	0.35
<i>Interest and views towards Mexican politics (e)</i>						
Op. of Mex politics: fair	0.46	1.33	0.26	1.31	0.59	3.07 ***
bad	0.55	1.52	0.27	1.27	0.58	2.95 ***
none	0.08	0.16	0.00	0.01	0.41	1.67 *
Follow news: somewhat closely	0.39	1.22	0.57	3.07 ***	0.97	4.99 ***
closely	0.42	1.37	0.33	2.11 **	0.55	3.41 ***
<i>Demographic Variables</i>						
Male	-0.03	-0.15	0.43	3.24 ***	-0.03	-0.23
Age	0.02	2.03 **	0.03	4.15 ***	0.01	1.46
Intercept	-2.31	-2.82 ***				

Continued on next page

Table 2 continued

Measurement Model for Knowledge Variables		Coef.	Std Err.		Coef.	Std Err.
Knows year		0.86	0.05	***		
Knows month		0.79	0.06	***		
Knows immigrants can vote		0.63	0.06	***		
Knows of deadline					0.89	0.06 ***
Knows date of deadline					0.70	0.07 ***
Knows registration procedures					0.61	0.05 ***
Correlation between factors		0.69	0.06			
Model fit (mean over imputations):						
RMSEA					0.02	
CFI					0.91	
pseudo R square	0.18					

NOTE: N=987, Estimates pooled from multiple imputations (20 datasets); Omitted categories: (a) US Citizens, (b) Speaks no English, (c) primary education, income < \$30k, (d) did not travel back, calls less than once a month, never remitted, (e) good opinion, does not follow news; * P < 0.1 , ** P< 0.05, *** P<0.01

Table 3: Expatriate turnout in select recent elections

	Estimate of Voting age population (VAP)	Expatriate Votes Cast	Turnout estimate
Mexico - 2006:			
Overall		32,632	
United States	10,700,000	28,335	0.26%
Mexico – 2012			
United States	10,700,000	29,348	0.27%
Botswana			
1999 election	25,000	333	1.3%
2004 election	25,000	1,214	4.9%
Philippines 2004			
conservative VAP estimate	3,800,000	233,092	6.1%
generous VAP estimate	7,000,000	233,092	3.3%
Cape Verde 2001	250,000	7,558	3.0%
Peru 2011 (first round)	1,000,000	402,000	40%
Poland			
United States	7,061	452,053	1.6%
Germany	2,872	297,000	1.0%
Canada	1,641	177,535	0.9%
France	1,406	103,829	1.4%
Czech Republic	410	24,000	1.7%
Sum/Average	13,390	1,054,417	1.3%
Italy			
2006 - official eligibles	2,699,000	975,414	36.1%
1987 Europe			9.7%
1987 Non-Europe			1.7%
1972 Europe			22.3%
1972 Non-Europe			2.3%
Czech Republic			
Slovakia	374	6,927	5.4%
France	260	3,370	7.7%
Italy	200	6,678	3.0%
Germany	196	34,386	0.6%
Poland	70	5,979	1.2%
Sum/Average	1,100	57,340	1.9%
Honduras 2001	4,541	546,000	0.83%

Note: Data on the eligible voting age population are hard to find and should be considered rough estimates in most cases. Thus turnout rates should be considered rough estimates that give a sense of the magnitude of participation. We tried to be conservative (tending towards overestimating turnout) in all the estimates we present. Sources and detailed comments about the assumptions and calculations can be found in the appendix.

Appendix – Explanation of estimates and sources for table 3:

Mexico:

Votes overall: Ellis et al. 2007 p.192

Votes from the US: <http://www.washingtonpost.com/wp-srv/world/interactives/mexico06/>

Voting Age Population (VAP): The 2006 to 2009 American Community Survey lists about 11.8 million Mexican born individuals. Out of these 1.1 million (9%) are under the age of 18, which leaves about 10.7 million who would be eligible to register. To calculate VAP from total emigrant populations we apply this distribution to other cases unless numbers are available.

Botswana:

Votes: Ellis et al. 2007 p.38

VAP: Ibid.

Philippines:

Votes: Ellis et al. 2007 p.196

VAP (conservative): Counting only temporary overseas Filipinos which most certainly would be eligible to vote gives an estimate of about 3.8 million according to the Philippine Overseas Employment Administration (POEA): <http://www.poea.gov.ph/stats/2006Stats.pdf>

VAP (generous): According to the International Organization for Migration (IOM) the general estimate of overseas Filipinos is about 7 Million (Ellis et al. 2007:194).

Cape Verde:

Votes: Ellis et al. 2007 p.202

VAP: Ellis et al. 2007 p.202 lists an estimated diaspora of about 500,000 of which 250,000 would be eligible to register to vote.

Peru:

Votes: Peruvian Board of Elections (see note 7).

VAP: The Migration and Remittances Factbook of the World Bank (2011) lists about 1.1 million expatriates. Subtracting 9% for those under age 18 leaves us with about 1 million of voting age.

Poland:

Votes: Fidrmuc & Doyle (2004 p.6). This paper lists the total number of expatriates votes as well as breakdown for select countries. We use the sum of the votes for all those countries where we could find reliable information on eligible expatriates.

VAP: For the US, Canada, France and the Czech Republic we relied on the "Database on Immigrants in OECD countries (DIOC)" assembled by the OECD in 2000. For Germany we use data from the most recent Microcensus published in Fachserie 1 Reihe 2.2 by Statistisches Bundesamt in 2010 available at <http://www.destatis.de>. Table 2 lists 332,000 foreigners with polish citizenship in Germany of those 35000 (about 10%) were under the age of 20 which gives us a conservative estimate of the eligible voting age population of 297,000.

Italy:

Battiston & Mascitelli (2008). Italy sends ballots *automatically* to Italian citizens abroad if they are listed in two databases maintained by the Ministry of Foreign Affairs and the Ministry of the Interior. However these two lists reflect only those citizens who maintain regular contact with their consulate or former municipality in Italy (p.272). There are likely many more Italian citizens that fall through the cracks because they no longer maintain contact to the Italian state (p.276).

Czech Republic:

Votes: Fidrmuc & Doyle (2004)

VAP: OECD Database (DIOC)

Honduras:

Votes: Ellis et al. 2007 p.134

VAP: Ellis et al. (2007 p.133) list an estimated 600,000 citizens living abroad if we assume that as in the case of Mexico 9% are under the age of 18 and thus not eligible this would leave us

with a conservative estimate of 546,000.