

UCLA
Contemporary Music Score Collection

Title

Melngéngé

Permalink

<https://escholarship.org/uc/item/4g92q8zm>

Author

Sentosa, Gempur

Publication Date

2020

GEMPUR SENTOSA

“Melngéngé”

For Flute, Violin, & Cello

2019

Program Notes (Description of work)

"Melngéngé" is a musical composition about the activities on the morning in the city community. Melngéngé from the Sundanese language consisting of the words *meleték* and *sarangéngé* to show time around 07.00 AM. The morning situation becomes an idea, so it can be taken from one of the samples of human activity in urban areas during working time such as in Bandung that gives the impression of chaos, traffic jam, air pollution, the bustle of society. Further composition of contrast patterns and counterpoints with timing, flexibility, intensity, taste and imagination on the source of ideas in small ensemble format (trio).

Duration

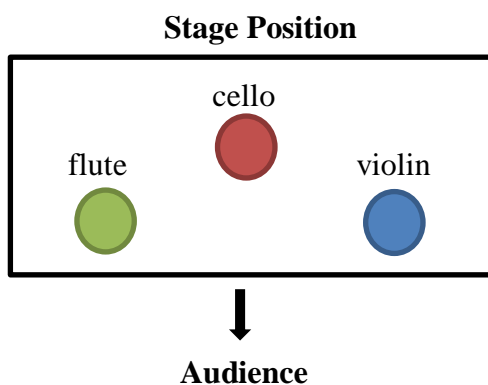
± 03'.10" (3 minutes 10 seconds)

Instrumentation

Flute

Violin

Cello



Performance Notes

General

♯ Quarter Tone

sfz sforzato

♩ = 60 = Tempo 60 bpm

20" = Duration. Mean to play 20 second.



= System divider, dividing each part.



= Note head extender, long note for one or more pitch



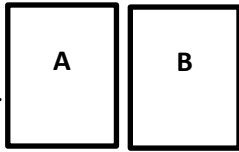
= accent



= Staccato,



= silent 7 seconds.

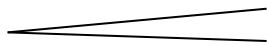


= playing the part from box

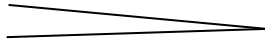
after 5 seconds



= play after 5 seconds



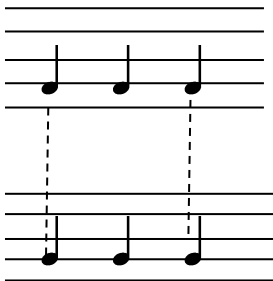
= Crescendo



= Decrescendo



= Crescendo from silent



= *timing* for playing together.

Flute

(voice) = playing the flute with the pitch notes listed while saying the words.



(voice)



= playing the flute with humming

Normal

= play normally.



= Flutter tongue



= Key slap, *playing the key slap without specific pitch.*



= Arpeggio

Strings

S.T = Sul Tasto, tehnic the *bowing* near *fret board*.

S.P = Sul Ponticello, the *bowing* near *bridge*.

E.S.P = Extreme Molto Sul Ponticello, the *bowing* near *bridge* more

ORD = Ordinario, Normally

clb. = Col Legno Battuto, hit the string with a wooden bow.

S.T → S.P = Sul tasto to sul ponticello.

S.P → S.T = Sul ponticello to sul tasto.

Ⓢ **Ⓢ** G.S = swipe the string with coin

▭ = Down – Bowing

∨ = Up – Bowing


+ = Pizzicato left hand

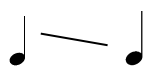
⤿ = Fingernail, pizzicato with nail right hand


Ⓢ = Snap Pizzicato, pul the string to whip the *fret board*

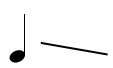
⤿
-----> = *put the shoe sole thread on the inside of the bridge strings, then swipe the strings alternately with both hands up down.*


Tr. = Tremollo, Trill.

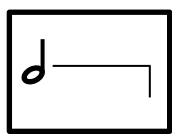
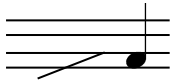
 = mordent

 = glissando, slide

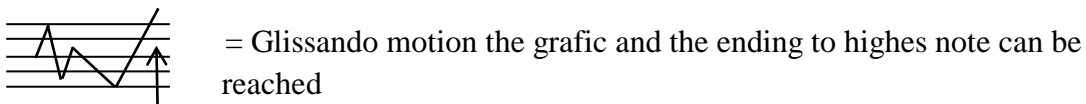
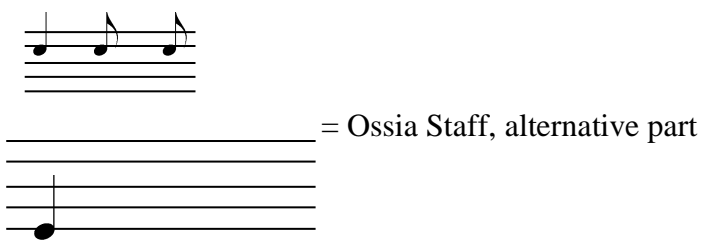
 = Glissando from not specific note to certain note

 = Glissando from certain note to not specific note

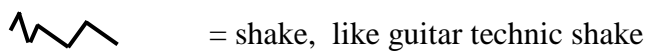
 = Harmonik.


 = Glissando.with duration note above

 = Glissando motion the grafic



shake



“Melngéngé”

Gempur Sentosa

♩ = 60

10" after 5 seconds (voice) normal

Flute *pp* *mf* *f*

cuh cuh sssep

playing the flute with the pitch notes listed while saying the words.

Violin *ff* *mp* *f*

S.T. → S.T.

Violoncello *p* *ff* *ppp* *mp* *f*

S.T. ORD clb.

30"

Fl. *mp* *ff*

playing the key slap in a random way on the A B C Box without specific pitch.

A	B	C
<i>sfz</i>	<i>sfz</i>	<i>sfz</i>

S.T. → S.P. E.S.P. ORD

Vln. *mp* *f*

Vc. *mf*

Prepared Sul C

put the shoe sole thread on the inside of the bridge strings, then swipe the strings alternately with both hands.

11 normal 15"

Fl. *f* *fff* *f*

Vln. *f* *mp* *f*

Vc. (tr) *f* *f*

Silent 7"

Silent 7"

Silent 7"

after 11 seconds
Prepared Sul G + + + +

G.S

16

Fl. *p*

Vln. arco 6 *mf* *p*

Vc. arco 5 *mf* *p*

21

Fl. (voice) *mp* *normal*
cuh sss sup

Vln. *mp* arco 5

Vc. *mp* 3 6

1. playing boxes ABC
2. playing boxes BCA
3. playing all boxes (random) 1 times.




43

Fl.

12"

after 7 seconds

12"

after 2 seconds

ppp *fff*

Vln.

f *mp* *ppp* *< mf >* *pp* *fff*

Vc.

arco

mp *p* *fff*

Detailed description: This musical score page features three staves: Flute (Fl.), Violin (Vln.), and Violoncello (Vc.). The Flute staff begins at measure 43 and includes two 12-second performance windows. The first window, labeled 'after 7 seconds', shows a rapid sixteenth-note passage. The second window, labeled 'after 2 seconds', shows a sustained note with a dynamic range from *ppp* to *fff*. The Violin staff starts with a tremolo, followed by a dynamic increase to *f*, then a *mp* section with two boxed notes, and a final dynamic range from *ppp* to *fff*. The Violoncello staff plays a rhythmic accompaniment of eighth notes, marked 'arco', with dynamics ranging from *mp* to *fff*. Vertical dashed lines align the 12-second windows across the staves.