

# UC San Diego

## UC San Diego Previously Published Works

### Title

Impact of C-reactive protein levels on lipoprotein(a)-associated aortic stenosis incidence and progression

### Permalink

<https://escholarship.org/uc/item/4kz130zx>

### Journal

European Heart Journal Open, 3(2)

### ISSN

2752-4191

### Authors

Girard, Arnaud  
Gaillard, Emilie  
Puri, Rishi  
[et al.](#)

### Publication Date

2023-03-02

### DOI

10.1093/ehjopen/oead032

Peer reviewed

# Impact of C-reactive protein levels on lipoprotein(a)-associated aortic stenosis incidence and progression

Arnaud Girard <sup>1</sup>, Emilie Gaillard<sup>2</sup>, Rishi Puri<sup>3</sup>, Romain Capoulade <sup>4</sup>, Kwan L. Chan<sup>5</sup>, Audrey Paulin<sup>1</sup>, Hasanga D. Manikpurage<sup>1</sup>, Jean Dumesnil<sup>1</sup>, James W. Tam<sup>6</sup>, Koon K. Teo<sup>7</sup>, Christian Couture<sup>1</sup>, Nicholas J. Wareham<sup>8</sup>, Marie-Annick Clavel <sup>1,9</sup>, Erik S.G. Stroes <sup>10</sup>, Patrick Mathieu <sup>1,11</sup>, Sébastien Thériault <sup>1,12</sup>, Sotirios Tsimikas<sup>13</sup>, Philippe Pibarot <sup>1,9</sup>, S. Matthijs Boekholdt <sup>2</sup>, and Benoit J. Arsenault <sup>1,9,\*</sup>

<sup>1</sup>Centre de recherche de l'Institut universitaire de cardiologie et de pneumologie de Québec, Québec, QC, G1V 4G5, Canada; <sup>2</sup>Department of Cardiology, Amsterdam UMC, University of Amsterdam, Amsterdam, 1105 AZ, The Netherlands; <sup>3</sup>Department of Cardiovascular Medicine, Cleveland Clinic, Cleveland, OH, 44195, USA; <sup>4</sup>Nantes Université, CNRS, INSERM, l'Institut du thorax, F-44000 Nantes, 44007, France; <sup>5</sup>Department of Medicine, University of Ottawa Heart Institute, Ottawa, ON, K1Y 4W7, Canada; <sup>6</sup>Department of Medicine, St. Boniface General Hospital, Winnipeg, MB, R2H 2A6, Canada; <sup>7</sup>Department of Medicine (Cardiology), McMaster University, Hamilton, ON, L8S 4L8, Canada; <sup>8</sup>Department of Public Health and Primary Care, University of Cambridge, Cambridge, CB2 1TN, UK; <sup>9</sup>Department of Medicine, Faculty of Medicine, Université Laval, Québec, QC, G1V 0A6, Canada; <sup>10</sup>Department of Vascular Medicine, Amsterdam UMC, University of Amsterdam, Amsterdam, 1105 AZ, The Netherlands; <sup>11</sup>Department of Surgery, Faculty of Medicine, Université Laval, Québec, QC, G1V 0A6, Canada; <sup>12</sup>Department of Molecular Biology, Medical Biochemistry and Pathology, Faculty of Medicine, Université Laval, Québec, QC, G1V 0A6, Canada; and <sup>13</sup>Division of Cardiovascular Diseases, Department of Medicine, University of California San Diego, La Jolla, CA, 92093, USA

Received 14 December 2022; revised 14 February 2023; accepted 22 March 2023; online publish-ahead-of-print 30 March 2023

Handling Editor: Susanna C. Larsson

## Aims

Elevated lipoprotein(a) [Lp(a)] levels are associated with the risk of coronary artery disease (CAD) and calcific aortic valve stenosis (CAVS). Observational studies revealed that Lp(a) and C-reactive protein (CRP) levels, a biomarker of systemic inflammation, may jointly predict CAD risk. Whether Lp(a) and CRP levels also jointly predict CAVS incidence and progression is unknown.

## Methods and results

We investigated the association of Lp(a) with CAVS according to CRP levels in the European Prospective Investigation into Cancer and Nutrition (EPIC)-Norfolk study ( $n = 18\,226$ , 406 incident cases) and the UK Biobank ( $n = 438\,260$ , 4582 incident cases), as well as in the ASTRONOMER study ( $n = 220$ ), which assessed the haemodynamic progression rate of pre-existing mild-to-moderate aortic stenosis. In EPIC-Norfolk, in comparison to individuals with low Lp(a) levels ( $<50$  mg/dL) and low CRP levels ( $<2.0$  mg/L), those with elevated Lp(a) ( $>50$  mg/dL) and low CRP levels ( $<2.0$  mg/L) and those with elevated Lp(a) ( $>50$  mg/dL) and elevated CRP levels ( $>2.0$  mg/L) had a higher CAVS risk [hazard ratio (HR) = 1.86 (95% confidence intervals, 1.30–2.67) and 2.08 (1.44–2.99), respectively]. A comparable predictive value of Lp(a) in patients with vs. without elevated CRP levels was also noted in the UK Biobank. In ASTRONOMER, CAVS progression was comparable in patients with elevated Lp(a) levels with or without elevated CRP levels.

## Conclusion

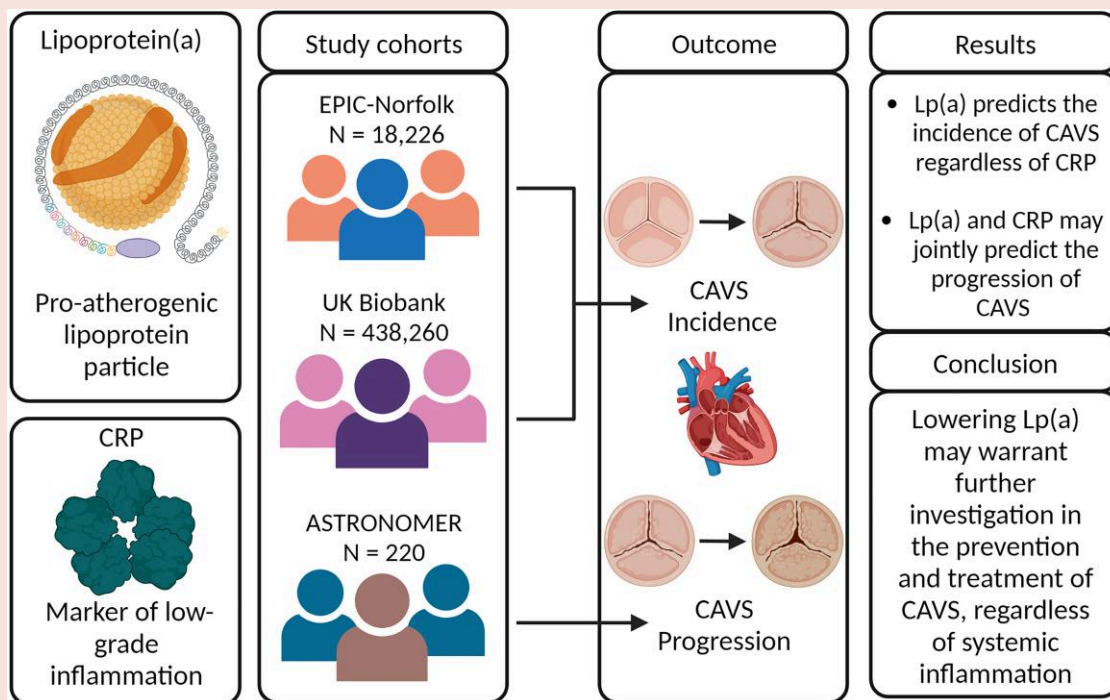
Lp(a) predicts the incidence and possibly progression of CAVS regardless of plasma CRP levels. Lowering Lp(a) levels may warrant further investigation in the prevention and treatment of CAVS, regardless of systemic inflammation.

\* Corresponding author. Tel: +418 656 8711 ext. 3498, Email: [benoit.arsenault@criucpq.ulaval.ca](mailto:benoit.arsenault@criucpq.ulaval.ca)

© The Author(s) 2023. Published by Oxford University Press on behalf of the European Society of Cardiology.

This is an Open Access article distributed under the terms of the Creative Commons Attribution-NonCommercial License (<https://creativecommons.org/licenses/by-nc/4.0/>), which permits non-commercial re-use, distribution, and reproduction in any medium, provided the original work is properly cited. For commercial re-use, please contact [journals.permissions@oup.com](mailto:journals.permissions@oup.com)

## Graphical Abstract



## Keywords

Calcific aortic valve stenosis • Lipoprotein(a) • C-reactive protein

## Introduction

Atherosclerotic cardiovascular diseases, including coronary artery disease (CAD) and stroke, are the leading causes of morbidity and mortality worldwide, whereas calcific aortic valve stenosis (CAVS) is the most common form of valvular heart disease in the Western world.<sup>1,2</sup> Interestingly, atherosclerosis and CAVS share similar risk factors including hypertension, dyslipidaemia, and smoking.<sup>3</sup> For both CAD and CAVS, accumulating evidence supports an additional role for lipoprotein(a) [Lp(a)], and genetic studies have confirmed that this association is likely to be causal.<sup>4–7</sup> Numerous prospective population studies have also identified C-reactive protein (CRP), an established biomarker of systemic inflammation, as a risk marker for CAD,<sup>8</sup> but this is not the case for CAVS. A small cross-sectional study showed that CRP levels were higher in CAVS patients than in matched controls.<sup>9</sup> Also, several small-scale prospective studies in CAVS patients showed that CRP levels were higher among those who showed a faster haemodynamic progression.<sup>10–12</sup> In contrast, a Swedish retrospective study showed that CRP levels did not differ between people who underwent surgery for CAVS compared with matched controls.<sup>13</sup> A prospective study, the ASTRONOMER trial, showed that CRP levels were not associated with CAVS severity or haemodynamic progression.<sup>14</sup> The large prospective Cardiovascular Health Study also observed a lack of association between CRP levels and prevalent or incident CAVS.<sup>15</sup>

In addition to the unresolved role of CRP in CAVS, it is also unclear whether the degree of systemic inflammation interacts with Lp(a) to predict the risk of CAVS. For the risk of CAD in patients with established vascular disease, such an interaction has been shown in the ACCELERATE trial, where elevated Lp(a) levels were related to the

risk of cardiovascular death, myocardial infarction, and stroke if CRP levels were  $\geq 2$  mg/L, but not among those with CRP  $< 2$  mg/L.<sup>16</sup> A similar interaction was shown in primary prevention in the prospective Multi-Ethnic Study of Atherosclerosis where Lp(a) and CRP jointly predicted the incidence of cardiovascular diseases.<sup>17</sup> We hypothesised that CRP and Lp(a) levels may jointly affect the incidence of CAVS and the haemodynamic progression of aortic stenosis. We tested this hypothesis in the EPIC-Norfolk prospective population study, the UK Biobank, and the ASTRONOMER trial.

## Methods

### Study populations

The design, methods, and baseline patient characteristics of the EPIC-Norfolk prospective population study have previously been described.<sup>18</sup> In brief, this cohort included 25 663 participants aged between 45 and 79 years residing in the region of Norfolk, UK.<sup>19</sup> Participants were recruited from the age–sex registers of general practices of Norfolk. They completed a detailed health and lifestyle questionnaire at baseline, between 1993 and 1997, and were followed for approximately 20 years. All relevant baseline characteristics were available in 18 226 study participants.

The study design and population of the UK Biobank have previously been reported.<sup>20</sup> UK Biobank includes more than 500 000 participants between 40 and 69 years of age who were recruited from the United Kingdom's National Health Service (NHS) central registers between 2006 and 2010. Assessment for diseases and serological tests for these participants were done in 22 assessment centres during the same period. Data collection included a self-report questionnaire, physical measures, and blood, urine, and

saliva sample collection. Analyses in the UK Biobank were conducted under the data application number 25205. Participants in both EPIC-Norfolk and UK Biobank gave signed and informed consent for their participation in these respective studies. Furthermore, UK Biobank has been approved by the North West Multi-Center Research Committee. A total of 438 260 UK Biobank participants and Lp(a) measurements available were included in the current analysis. Patients with CAVS at baseline (self-reported and/or who met the diagnostic criteria for CAVS) in EPIC-Norfolk and UK Biobank were excluded from the present study (Figure 1).

The design and rationale of the ASTRONOMER trial (NCT00800800) has previously been described.<sup>21</sup> This study included 269 participants between 18 and 82 years of age with mild-to-moderate CAVS at baseline [peak aortic jet velocity ( $V_{\text{peak}}$ ) between 2.5 and 4.0 m/s]. Participants were recruited between 2002 and 2005 at 23 Canadian sites. Patients diagnosed with severe or symptomatic AS, severe aortic regurgitation, symptomatic CAD, significant mitral valve disease (stenosis or regurgitation), congestive heart failure, low-density lipoprotein cholesterol (LDL-C)-lowering therapy, or diabetes were excluded from the trial. Participants were randomly assigned to either rosuvastatin 40 mg or a placebo in a study protocol approved by the institutional review boards of all participating centres. Participants gave written signed informed consent for the study. For the current analysis, we included 220 participants.

## Laboratory measurements

Participants in the EPIC-Norfolk study completed a detailed health and lifestyle questionnaire at the baseline survey, between 1993 and 1997, which included questions on the presence of existing diseases and cigarette smoking. The height and weight of participants were measured in light clothes and with shoes removed; height was measured using a stadiometer and rounded to the nearest 0.1 cm; weight was measured using Salter scales model 975 and rounded to the nearest 100 g. Blood pressure was measured using an Accutor non-invasive blood pressure monitor in the right arm of seated participants after a 5 min rest. Lipids were measured using serum taken from blood samples taken by venipuncture and by using the RA 1000 (Bayer Diagnostics, Basingstoke, UK). LDL-C levels were calculated using the Friedwald formula.<sup>22</sup> Blood creatinine levels were measured using a Dade-Behring Dimension AR analyser. Blood CRP levels were measured using an Olympus AU460 Chemistry Immuno Analyzer device. Lp(a) levels were measured with an immunoturbidimetric Olympus AU640 assay based on polyclonal antibodies that target apolipoprotein(a) epitopes.<sup>23</sup> Participants in UK Biobank also completed a detailed lifestyle questionnaire. Participants height was measured using a Seca 202 height measure, while weight was measured using the Tanita BC-418 MA body composition analyser on participants without shoes and with only light clothing. Blood pressure was measured using an Omron HEM-70151T digital blood pressure monitor on seated participants after 1 min of rest. Blood samples were taken from participants using a 21G Safety Lok butterfly needle connected to a vacutainer barrel. LDL-C levels were measured from these samples using a direct homogeneous Beckman assay. Blood creatinine levels were measured by enzymatic analysis using a Beckman Coulter AU5800. Blood CRP levels were measured by immunoturbidimetric assay on the same device.<sup>20</sup> Lp(a) levels of participants in the UK Biobank were measured by immunoturbidimetric analysis on a Randox AU5800. Participants who had Lp(a) levels below the detectable minimum (3.8 nmol/L) were assigned the value 2.88 nmol/L. Those with Lp(a) levels above the upper level of detection (189 nmol/L) were included in the high Lp(a) group. Clinical measurements for the ASTRONOMER trial were performed in plasma samples collected from 220 out of 269 trial participants. These measurements included plasma levels of glucose, total cholesterol, LDL-C, high-density lipoprotein cholesterol, triglycerides, apolipoprotein B (apoB), and creatinine, and were done using techniques automated and standardised by the Canadian reference laboratory. Lp(a) was measured using a chemiluminescent immunoassay, as previously described.<sup>24–27</sup> Participants with CRP levels higher than 20 mg/L were excluded in all three cohorts.

## Outcomes ascertainment

Cases of CAVS in the EPIC-Norfolk study were identified by hospital admission codes through their unique NHS number linked with ENCORE (East Norfolk Health Authority Database). Hospital admission codes were determined by trained professionals in accordance with the International

Classification of Diseases version 10 (ICD-10) guidelines. CAVS cases were identified by patient hospitalizations or deaths with CAVS as an underlying cause. A total of 406 CAVS cases were reported according to this outcome definition within EPIC-Norfolk, whereas 17 820 participants did not develop CAVS over a median follow-up time of 16 years. In the UK Biobank, the CAVS outcome was defined using ICD-10 identification codes. Such cases were defined as patients with ICD codes I35.0 or I35.2. Patients with codes related to rheumatic fever or rheumatic heart disease, as defined by ICD-10 codes I00, I02, I05, and I09, were excluded from the CAVS outcome. All other patients except for those with self-reports of CAVS were included in the analysis. This definition of CAVS allowed for the inclusion of 4582 CAVS cases and 433 678 without CAVS from the UK Biobank. Median follow-up time for participants in the UK Biobank was of 12.5 years. The CAVS outcome in the ASTRONOMER trial was the progression rate of aortic valve stenosis as measured by the annual change of peak aortic jet velocity ( $V_{\text{peak}}$ ) over a median follow-up of 3.5 years, an established measure of CAVS progression.<sup>28</sup> Measurement methods employed for clinical and Doppler echocardiographic data in the ASTRONOMER study were described previously<sup>29</sup> and allowed to measure  $V_{\text{peak}}$  and calculate aortic valve area. This change was calculated and annualised to account for different follow-up times of participants by dividing the calculated difference between the last follow-up and the baseline by the time between these two visits.

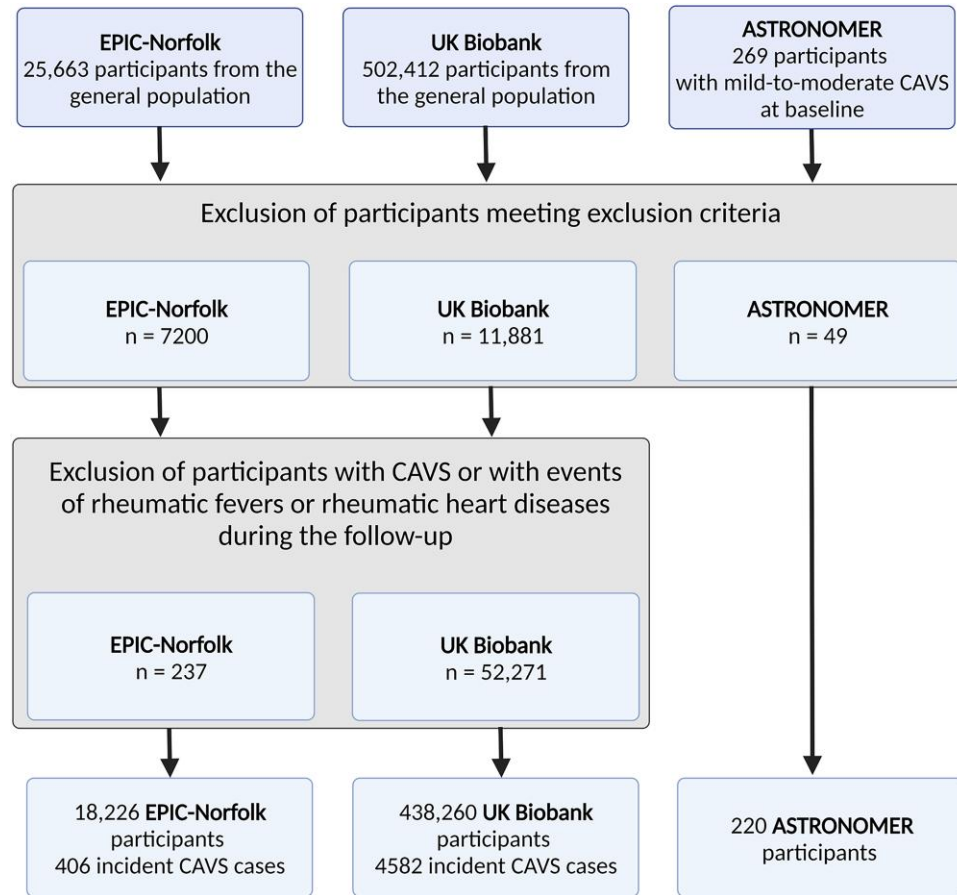
## Statistical analyses

Continuous variables were reported as mean and SD values for normally distributed variables and as median and interquartile range for non-normally distributed variables. Normality was assessed through visual examination of graphical representation of the data. Categorical data were expressed as percentages of the total study cohort. Participants were categorised according to their blood Lp(a) levels in EPIC-Norfolk, the UK Biobank, and ASTRONOMER. A threshold of 50 mg/dL was set in EPIC-Norfolk and patient were classified as having a circulating Lp(a) level either superior or equal or lower than this threshold. This same stratification was done using a threshold of 125 nmol/L in the UK Biobank. In ASTRONOMER, patients were stratified into tertiles of the Lp(a) distribution and comparison was done between patients from the 3rd tertile ( $\text{Lp(a)} \geq 58.5$  mg/dL) or patients from the two lower tertiles ( $\text{Lp(a)} < 58.5$  mg/dL) as previously described.<sup>30</sup> In all three cohorts, patients were additionally classified according to CRP levels ( $< 2$  mg/L vs.  $\geq 2$  mg/L). Multivariable Cox proportional hazard models adjusted for age, sex, BMI, blood pressure, LDL cholesterol levels, circulating creatinine, and smoking status were used to assess the association between Lp(a) levels and incidence of CAVS in participants with low or high CRP levels and hazard ratios (HRs) and corresponding 95% confidence intervals (95% CI) in EPIC-Norfolk and the UK Biobank were obtained. Assumptions of the Cox proportional hazard models were assessed through visual inspection of the Schoenfeld residuals. Goodness-of-fit was evaluated by computing the concordance of the predicted model with the observed data. Two-way analyses of variance followed by Tukey and Dunnett *post-hoc* tests were used to assess the effect of Lp(a) levels on annualised changes in  $V_{\text{peak}}$  in ASTRONOMER. All statistical analyses were performed using the computational software R version 4.1.3 (R Foundation for Statistical Computing) along with the packages 'survival', 'rstatix', and 'multcomp'. Figures were created using the 'ggplot2' and 'ggsignif' packages.

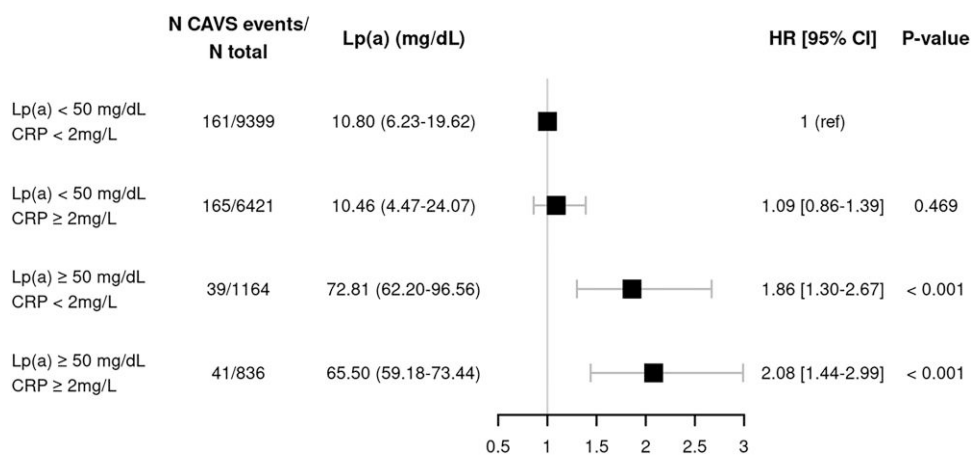
## Results

### Characteristics of study participants at baseline

Characteristics at baseline of participants in the EPIC-Norfolk study according to Lp(a) and CRP levels are reported in [Supplementary material online, Table S1](#). In both studies, the baseline characteristics of the study participants were comparable to that of the general population although with a lower proportion of smokers. Median levels of Lp(a) and CRP were 11.5 mg/dL and 1.50 mg/L, respectively. A total of 2080 patients (11.4% of the cohort) had Lp(a) levels  $\geq 50$  mg/dL, while

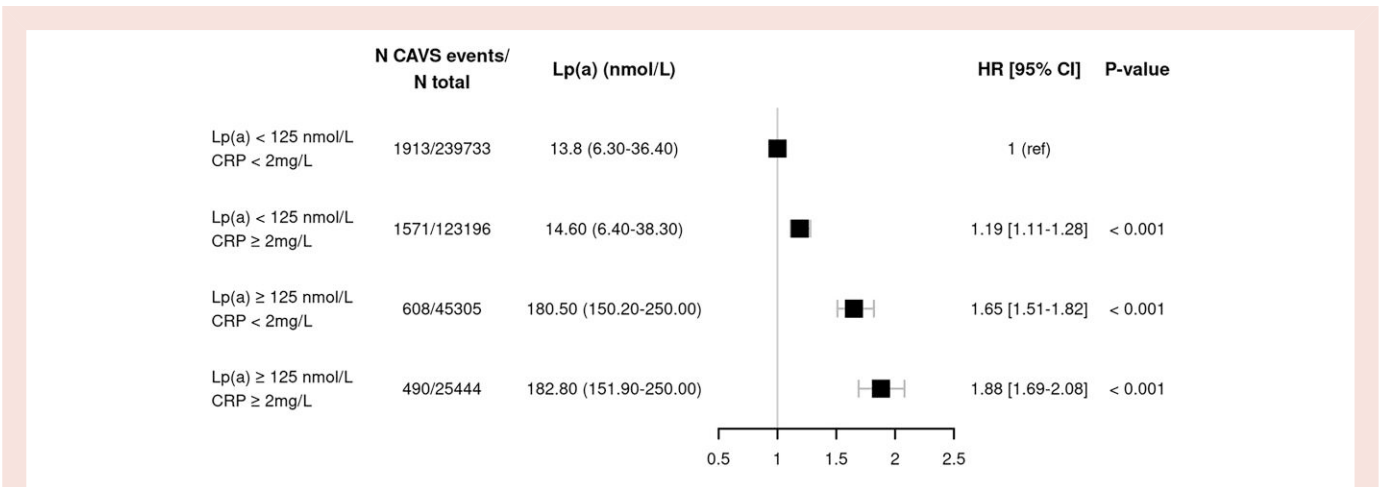


**Figure 1** Flowchart presenting the patient selection strategy.



**Figure 2** Hazard ratios for calcific aortic valve stenosis (bars) in participants from EPIC-Norfolk with higher vs. lower lipoprotein(a) and C-reactive protein levels. Multivariable Cox proportional hazard models were adjusted for age, sex, BMI, blood pressure, LDL cholesterol levels, circulating creatinine, and smoking status. Median (interquartile range) Lp(a) levels are also shown for each group. Error bars represent the 95% confidence interval.





**Figure 3** Hazard ratios for calcific aortic valve stenosis (bars) in participants from UK Biobank with higher vs. lower lipoprotein(a) and C-reactive protein levels. Multivariable Cox proportional hazard models were adjusted for age, sex, BMI, blood pressure, LDL cholesterol levels, circulating creatinine, and smoking status. Median (interquartile range) Lp(a) levels are also shown for each group. Error bars represent the 95% confidence interval.

**Table 1** Calcific aortic valve stenosis event rates in EPIC-Norfolk and the UK Biobank by lipoprotein(a) and C-reactive protein levels

	EPIC-Norfolk				UK Biobank			
	<50 mg/dL		≥50 mg/dL		<125 nmol/L		≥125 nmol/L	
CRP (mg/L)	<2	≥2	<2	≥2	<2	≥2	<2	≥2
n CAVS events/n total	161/9399	165/6421	39/1164	41/836	1913/239733	1571/123 196	608/45 305	490/25 444
CAVS event rate (%)	1.71	2.57	3.35	4.9	0.79	1.26	1.32	1.89

CAVS, calcific aortic valve stenosis.

7463 (40.9%) had CRP levels  $\geq 2$  mg/L. Baseline characteristics for participants in the UK Biobank cohort are presented in [Supplementary material online, Table S2](#) according to Lp(a) and CRP levels. The median Lp(a) level in the full cohort was 19.6 nmol/L, and 71 847 (16.4%) patients had a Lp(a) level  $\geq 125$  nmol/L. Median CRP was 1.30 mg/L, and 150 701 (34.4%) patients had a CRP level  $\geq 2.0$  mg/L. Baseline characteristics of patients in the ASTRONOMER study stratified based on Lp(a) and CRP levels are presented in [Supplementary material online, Table S3](#). Overall median levels were 29.8 mg/dL and 1.8 mg/L, for Lp(a) and CRP, respectively. A total of 88 (40%) patients had CRP levels  $\geq 2.0$  mg/L in ASTRONOMER.

## Lipoprotein(a), C-reactive protein, and incident aortic stenosis

In EPIC-Norfolk, high levels of Lp(a) were associated with incident CAVS, while CRP levels were not associated with CAVS. Compared with participants with low Lp(a) and low CRP levels, those with high Lp(a) and with either high or low CRP levels were at higher CAVS risk. As presented in [Figure 2](#), participants in the group with high Lp(a) and high CRP levels were at the highest CAVS risk [HR = 2.08 (95%CI, 1.44–2.99)]. Participants with high Lp(a) and low CRP also had a higher risk [HR = 1.86 (95% CI, 1.30–2.67)]. Participants with low Lp(a) and high CRP were however not at higher CAVS risk [HR = 1.09 (95% CI, 0.86–1.39)]. In the UK Biobank, participants with high Lp(a) had a higher risk of CAVS. Compared with participants with low Lp(a) and low CRP levels, those with high Lp(a) and high CRP

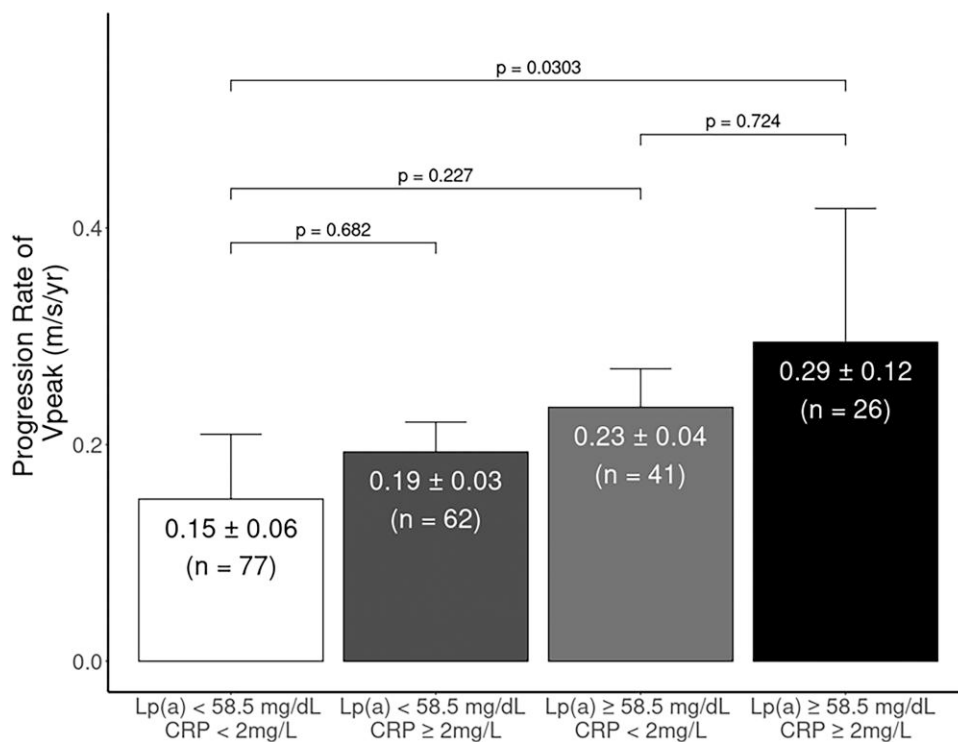
or high Lp(a) and low CRP were also at higher CAVS risk, as presented in [Figure 3](#) [HR = 1.88 (95% CI, 1.69–2.08) and 1.65 (1.51–1.82), respectively, for patients with high Lp(a) and high vs. low CRP levels]. Participants with low Lp(a) but high CRP were at a slightly higher CAVS risk [HR = 1.19 (95% CI, 1.11–1.28)]. Incidence rates of CAVS are presented for every patient category in [Table 1](#).

## Lipoprotein(a), C-reactive protein, and incident aortic stenosis progression

In ASTRONOMER, Lp(a) and CRP levels appeared to be jointly associated with the progression of CAVS. Although patients in the top Lp(a) tertile and with high CRP had a significantly faster  $V_{\text{peak}}$  progression rate than patients in the two bottom tertiles of Lp(a) and with low CRP ( $0.29 \pm 0.12$  m/s/yr vs.  $0.15 \pm 0.06$  m/s/yr,  $P = 0.03$ ), CAVS progression was comparable in patients with elevated Lp(a) levels with or without elevated CRP levels ([Figure 4](#)).

## Discussion

We investigated the potential joint associations of Lp(a) and CRP, a biomarker of systemic inflammation, in increasing CAVS risk in two large prospective cohorts, EPIC-Norfolk, and the UK Biobank. Higher levels of Lp(a) were associated with an increased risk of developing CAVS in these studies. This association is expected as Lp(a) is a widely known risk factor for CAVS.<sup>6</sup> In both studies, although participants with high



**Figure 4** Progression rate of peak aortic jet velocity (bars) in m/s/yr for participants in the ASTRONOMER trial in patients with higher vs. lower lipoprotein(a) and C-reactive protein levels. The number of participants and *P*-value for statistical significance of change among groups is also presented. Error bars represent standard errors.

Lp(a) levels were at higher risk of CAVS, Lp(a) was associated with CAVS risk regardless of CRP levels. Analyses performed in the ASTRONOMER trial revealed that the fastest CAVS haemodynamic progression rate was observed in patients with both high Lp(a) and CRP levels. No significant difference was found between the progression rate of CAVS in patients with high Lp(a) and either low or high CRP. Altogether, our results provide evidence for an important effect of Lp(a) on CAVS incidence and possibly progression that is only modestly influenced by CRP levels.

It has previously been shown that elevated CRP levels were associated with higher cardiovascular risk in patients with high Lp(a), suggesting that adding CRP to the measurement of Lp(a) could provide a better risk-stratification assessment.<sup>16,17</sup> CRP levels were also recently shown to promote *de novo* aortic valve calcium accumulation, but not progression.<sup>31</sup> Lp(a) has been shown to elicit inflammatory pathways and promote macrophage activation and endothelial migration.<sup>32,33</sup> Systemic inflammation has long been known to play a role in the pathogenesis of CAD and possibly CAVS.<sup>34–37</sup> With regard to the incidence rate of CAVS, the present findings suggest that a marker of low-grade inflammation such as CRP does not provide additional information to the measurement of Lp(a) for predicting the incidence of CAVS. A previous analysis from ASTRONOMER, as well as a pooled analysis from the Ring of Fire and SALTIRE I studies revealed that Lp(a) was positively associated with the progression of CAVS.<sup>38,39</sup> However, though it warrants further investigation in larger studies, it is possible that CRP may help identify patients with a faster progression rate of CAVS in those with elevated Lp(a). Lp(a) was recently found to not predict aortic valve calcification in the general population.<sup>40</sup> Whether CRP could modulate the impact of Lp(a) in the general population is currently unknown.

To our knowledge, this study is the first to examine the predictive value of plasma Lp(a) levels in patients with and without elevated CRP levels in the context of CAVS. Our study however has limitations. The ASTRONOMER study was not designed to evaluate the respective contributions of Lp(a) and CRP to CAVS progression. Results of this *post-hoc* analysis should therefore be considered as hypothesis-generating. Although the joint effects of Lp(a) and CRP levels on CAVS incidence and progression might suggest that Lp(a) predicts risk more strongly in the context of systemic inflammation, CRP may simply be a marker of higher absolute CAVS risk. Many studies revealed an important effect of higher adiposity and metabolic dysfunction to be associated with both higher CRP levels and CAVS risk.<sup>41</sup> Our study design does not enable us to conclude that patients with a slightly higher Lp(a)-mediated risk in the context of high CRP levels is due to systemic inflammation or higher absolute CAVS risk.<sup>42</sup> Also, no information on aortic valve phenotypes (bicuspid vs. tricuspid aortic valves) or the presence of aortic sclerosis) was available in the prospective cohorts and the study populations were mostly of European ancestry. In population-based studies, the CAVS diagnosis was obtained from electronic health records and was not confirmed by echocardiography. Some CAVS cases could have been identified based on CAD diagnosis-driven symptoms or echocardiography. We recently reported that the predictive value of Lp(a) was similar in patients with vs. without CAD in multiple cohorts.<sup>43</sup> Whether the presence of CAD might influence the joint effect of CRP and Lp(a) on CAVS incidence is unknown. Finally, it should also be mentioned that our results on Lp(a) and CRP progression only applies to patients with CAVS.

In conclusion, in two large prospective studies, we found that higher Lp(a) levels were associated with higher CAVS risk in patients with low or high CRP levels. In the ASTRONOMER study, CAVS progression

was comparable in patients with high Lp(a) levels with high vs. low CRP levels. Future trials of Lp(a) lowering in the prevention or treatment of CAVS could further support our study conclusions by determining the valvular effect of drugs lowering Lp(a) in patients with vs. without evidence of systemic inflammation.

## Lead author biography



Arnaud Girard received a bachelor's degree in biomedical sciences from Laval University in Quebec, Canada, and is currently pursuing a master's degree at the Quebec Heart and Lung Institute. His research project focuses on the identification of causal risk factors for the development of cardiovascular diseases using molecular epidemiology. Arnaud is passionate about human genetics and how it can be leveraged to improve patient-related outcomes in preventive cardiology.

## Data availability

Access to UK Biobank data can be granted via the Access Management System of the UK Biobank (<https://www.ukbiobank.ac.uk/enable-your-research/apply-for-access>). Data access permission for this study was granted under UK Biobank application 25205. All other data produced in the present study are available upon reasonable request.

## Supplementary material

Supplementary material is available at *European Heart Journal Open* online.

## Acknowledgements

The authors gratefully acknowledge the study participants and staff of the EPIC-Norfolk study, the UK Biobank, and the ASTRONOMER trial.

## Funding

B.J.A. holds a senior scholar award from the Fonds de recherche du Québec: Santé and is supported by grants from the Canadian Institutes of Health Research and the Foundation of the Quebec Heart and Lung Institute. P.M. is the recipient of the Joseph C. Edwards Foundation granted to Université Laval. R.C. is supported by a 'Connect Talent' research chair from Region Pays de la Loire and Nantes Métropole. M.-A.C. holds the Canada Research Chair on Women's Cardiac Valvular Health.

**Conflict of interest:** B.J.A. is a consultant for Novartis, Editas Medicine, and Silence Therapeutics and has received research contracts from Pfizer, Ionis Pharmaceuticals, and Silence Therapeutics. R.C. has received honorarium from Novartis. P.P. has received funding from Edwards Lifesciences, Medtronic, Pi-Cardia, and Cardiac Phoenix for echocardiography core laboratory analyses and research studies in the field of transcatheter valve therapies, for which he received no personal compensation. P.P. has received lecture fees from Edwards Lifesciences and Medtronic. S.T. is a co-inventor of monoclonal antibodies directed to Lp(a) owned by UCSD directed to Lp(a) and receives royalties from patents on oxidation-specific antibodies and of biomarkers related to oxidised lipoproteins and Lp(a) held by UCSD. S.T. is a cofounder and have an equity interest in Oxitope, Inc. and its affiliates ('Oxitope') as well as in Kleanthi Diagnostics, LLC

('Kleanthi'). The terms of this arrangement have been reviewed and approved by the UCSD, in accordance with its conflict-of-interest policies. S.T. has a dual appointment at University of California San Diego and Ionis Pharmaceuticals.

## References

- Roth GA, Mensah GA, Johnson CO, Addolorato G, Ammirati E, Baddour LM, Barengo NC, Beaton AZ, Benjamin EJ, Benziger CP, Bonny A, Brauer M, Brodmann M, Cahill TJ, Carapetis J, Catapano AL, Chugh SS, Cooper LT, Coresh J, Criqui M, DeCleene N, Eagle KA, Emmons-Bell S, Feigin VL, Fernández-Solà J, Fowkes G, Gakidou E, Grundy SM, He FJ, Howard G, Hu F, Inker L, Karthikeyan G, Kassebaum N, Koroshetz W, Lavie C, Lloyd-Jones D, Lu HS, Mirijello A, Temesgen AM, Mokdad A, Moran AE, Muntner P, Narula J, Neal B, Ntsekhe M, Moraes de Oliveira G, Otto C, Owolabi M, Pratt M, Rajagopalan S, Reitsma M, Ribeiro ALP, Rigotti N, Rodgers A, Sable C, Shakil S, Sliwa-Hahnle K, Stark B, Sundström J, Timpel P, Tleyjeh IM, Valgimigli M, Vos T, Whelton PK, Yacoub M, Zuhlke L, Murray C, Fuster V; GBD-NHLBI-JACC Global Burden of Cardiovascular Diseases Writing Group. Global burden of cardiovascular diseases and risk factors, 1990–2019: update from the GBD 2019 study. *J Am Coll Cardiol* 2020;**76**:2982–3021.
- Iung B, Baron G, Butchart EG, Delahaye F, Gohlke-Bärwolf C, Levang OW, Tornos P, Vanoverschelde JL, Vermeer F, Boersma E, Ravaut P, Vahanian A. A prospective survey of patients with valvular heart disease in Europe: the Euro Heart Survey on Valvular Heart Disease. *Eur Heart J* 2003;**24**:1231–1243.
- Stewart BF, Siscovick D, Lind BK, Gardin JM, Gottdiener JS, Smith VE, Kitzman DW, Otto CM. Clinical factors associated with calcific aortic valve disease. Cardiovascular Health Study. *J Am Coll Cardiol* 1997;**29**:630–634.
- Clarke R, Peden JF, Hopewell JC, Kyriakou T, Goel A, Heath SC, Parish S, Barlera S, Franzosi MG, Rust S, Bennett D, Silveira A, Malarstig A, Green FR, Lathrop M, Gigante B, Leander K, de Faire U, Seedorf U, Hamsten A, Collins R, Watkins H, Farrall M; PROCARDIS Consortium. Genetic variants associated with Lp(a) lipoprotein level and coronary disease. *N Engl J Med* 2009;**361**:2518–2528.
- Thanassoulis G, Campbell CY, Owens DS, Smith JG, Smith AV, Peloso GM, Kerr KF, Pechlivanis S, Budoff MJ, Harris TB, Malhotra R, O'Brien KD, Kamstrup PR, Nordestgaard BG, Tybjaerg-Hansen A, Allison MA, Aspelund T, Criqui MH, Heckbert SR, Hwang SJ, Liu Y, Sjogren M, van der Pals J, Kälsh H, Mühleisen TW, Nöthen MM, Cupples LA, Caslake M, Di Angelantonio E, Danesh J, Rotter JI, Sigurdsson S, Wong Q, Erbel R, Kathiresan S, Melander O, Gudnason V, O'Donnell CJ, Post WS; CHARGE Extracoronary Calcium Working Group. Genetic associations with valvular calcification and aortic stenosis. *N Engl J Med* 2013;**368**:503–512.
- Kamstrup PR, Tybjaerg-Hansen A, Nordestgaard BG. Elevated lipoprotein(a) and risk of aortic valve stenosis in the general population. *J Am Coll Cardiol* 2014;**63**:470–477.
- Arsenault BJ, Boekholdt SM, Dubé MP, Rhéaume E, Wareham NJ, Khaw KT, Sandhu MS, Tardif JC. Lipoprotein(a) levels, genotype, and incident aortic valve stenosis: a prospective Mendelian randomization study and replication in a case-control cohort. *Circ Cardiovasc Genet* 2014;**7**:304–310.
- Emerging Risk Factors Collaboration, Kaptoge S, Di Angelantonio E, Lowe G, Pepys MB, Thompson SG, Collins R, Danesh J. C-reactive protein concentration and risk of coronary heart disease, stroke, and mortality: an individual participant meta-analysis. *Lancet* 2010;**375**:132–140.
- Galante A, Pietroiusti A, Vellini M, Piccolo P, Possati G, De Bonis M, Grillo RL, Fontana C, Favalli C. C-reactive protein is increased in patients with degenerative aortic valvular stenosis. *J Am Coll Cardiol* 2001;**38**:1078–1082.
- Sánchez PL, Santos JL, Kaski JC, Cruz I, Arribas A, Villacorta E, Cascon M, Palacios IF, Martin-Luengo C; Grupo AORTICA (Grupo de Estudio de la Estenosis Aórtica). Relation of circulating C-reactive protein to progression of aortic valve stenosis. *Am J Cardiol* 2006;**97**:90–93.
- Swierszcz J, Dubiel JS, Krzysiek J, Sztefko K. One-year observation of inflammatory markers in patients with aortic valve stenosis. *J Heart Valve Dis* 2011;**20**:639–649.
- Imai K, Okura H, Kume T, Yamada R, Miyamoto Y, Kawamoto T, Watanabe N, Neishi Y, Toyota E, Yoshida K. C-Reactive protein predicts severity, progression, and prognosis of asymptomatic aortic valve stenosis. *Am Heart J* 2008;**156**:713–718.
- Holmgren A, Ljungberg J, Hultdin J, Johansson B, Bergdahl IA, Näslund U, Söderberg S, Troponin T but not C reactive protein is associated with future surgery for aortic stenosis: a population-based nested case-referent study. *Open Heart* 2020;**7**:e001325.
- Chan KL, Dumesnil JG, Tam J, Ni A, Teo K. Effect of rosuvastatin on C-reactive protein and progression of aortic stenosis. *Am Heart J* 2011;**161**:1133–1139.
- Novaro GM, Katz R, Aviles RJ, Gottdiener JS, Cushman M, Psaty BM, Otto CM, Griffin BP. Clinical factors, but not C-reactive protein, predict progression of calcific aortic valve disease: the Cardiovascular Health Study. *J Am Coll Cardiol* 2007;**50**:1992–1998.
- Puri R, Nissen SE, Arsenault BJ, St John J, Riesmeyer JS, Ruotolo G, McElean E, Menon V, Cho L, Wolksi K, Lincoff AM, Nicholls SJ. Effect of C-reactive protein on lipoprotein(a)-associated cardiovascular risk in optimally treated patients with high-risk vascular disease: a prespecified secondary analysis of the ACCELERATE trial. *JAMA Cardiol* 2020;**5**:1136–1143.



17. Zhang W, Speiser JL, Ye F, Tsai MY, Cainzos-Achirica M, Nasir K, Herrington DM, Shapiro MD. High-sensitivity C-reactive protein modifies the cardiovascular risk of lipoprotein(a): multi-ethnic study of atherosclerosis. *J Am Coll Cardiol* 2021;**78**:1083–1094.
18. Day N, Oakes S, Luben R, Khaw KT, Bingham S, Welch A, Wareham N. EPIC-Norfolk: study design and characteristics of the cohort. *European Prospective Investigation of Cancer. Br J Cancer* 1999;**80**:95–103.
19. Hayat SA, Luben R, Keevil VL, Moore S, Dalzell N, Bhaniani A, Khawaja AP, Foster P, Brayne C, Wareham NJ, Khaw KT. Cohort profile: a prospective cohort study of objective physical and cognitive capability and visual health in an ageing population of men and women in Norfolk (EPIC-Norfolk 3). *Int J Epidemiol* 2014;**43**:1063–1072.
20. Sudlow C, Gallacher J, Allen N, Beral V, Burton P, Danesh J, Downey P, Elliott P, Green J, Landray M, Liu B, Matthews P, Ong G, Pell J, Silman A, Young A, Sprosen T, Peakman T, Collins R. UK Biobank: an open access resource for identifying the causes of a wide range of complex diseases of middle and old age. *PLoS Med* 2015;**12**:e1001779.
21. Chan KL, Teo K, Dumesnil JG, Ni A, Tam J; ASTRONOMER Investigators. Effect of lipid lowering with rosuvastatin on progression of aortic stenosis: results of the aortic stenosis progression observation: measuring effects of rosuvastatin (ASTRONOMER) trial. *Circulation* 2010;**121**:306–314.
22. Ness AR, Khaw KT, Bingham S, Day NE. Vitamin C status and undiagnosed angina. *J Cardiovasc Risk* 1996;**3**:373–378.
23. Gurdasani D, Sjouke B, Tsimikas S, Hovingh GK, Luben RN, Wainwright NW, Pomilla C, Wareham NJ, Khaw KT, Boekholdt SM, Sandhu MS. Lipoprotein(a) and risk of coronary, cerebrovascular, and peripheral artery disease: the EPIC-Norfolk prospective population study. *Arterioscler Thromb Vasc Biol* 2012;**32**:3058–3065.
24. Leibundgut G, Scipione C, Yin H, Schneider M, Boffa MB, Green S, Yang X, Dennis E, Witztum JL, Koschinsky ML, Tsimikas S. Determinants of binding of oxidized phospholipids on apolipoprotein (a) and lipoprotein (a). *J Lipid Res* 2013;**54**:2815–2830.
25. Tsimikas S, Willeit P, Willeit J, Santer P, Mayr M, Xu Q, Mayr A, Witztum JL, Kiechl S. Oxidation-specific biomarkers, prospective 15-year cardiovascular and stroke outcomes, and net reclassification of cardiovascular events. *J Am Coll Cardiol* 2012;**60**:2218–2229.
26. Clarke R, Hammami I, Sherliker P, Valdes-Marquez E, Watkins H, Hill M, Yang X, Tsimikas S, Hopewell JC; PROCARDIS Consortium. Oxidized phospholipids on apolipoprotein B-100 versus plasminogen and risk of coronary heart disease in the PROCARDIS study. *Atherosclerosis* 2022;**354**:15–22.
27. Merki E, Graham M, Taleb A, Leibundgut G, Yang X, Miller ER, Fu W, Mullick AE, Lee R, Willeit P, Crooke RM, Witztum JL, Tsimikas S. Antisense oligonucleotide lowers plasma levels of apolipoprotein (a) and lipoprotein (a) in transgenic mice. *J Am Coll Cardiol* 2011;**57**:1611–1621.
28. Capoulade R, Yeang C, Chan KL, Pibarot P, Tsimikas S. Association of mild to moderate aortic valve stenosis progression with higher lipoprotein(a) and oxidized phospholipid levels: secondary analysis of a randomized clinical trial. *JAMA Cardiol* 2018;**3**:1212–1217.
29. Capoulade R, Clavel MA, Dumesnil JG, Chan KL, Teo KK, Tam JW, Côté N, Mathieu P, Després JP, Pibarot P; ASTRONOMER Investigators. Impact of metabolic syndrome on progression of aortic stenosis: influence of age and statin therapy. *J Am Coll Cardiol* 2012;**60**:216–223.
30. Capoulade R, Chan KL, Yeang C, Mathieu P, Bossé Y, Dumesnil JG, Tam JW, Teo KK, Mahmut A, Yang X, Witztum JL, Arsenault BJ, Després JP, Pibarot P, Tsimikas S. Oxidized phospholipids, lipoprotein(a), and progression of calcific aortic valve stenosis. *J Am Coll Cardiol* 2015;**66**:1236–1246.
31. Diederichsen A, Lindholt JS, Møller JE, Gerke O, Rasmussen LM, Dahl JS. Sex differences in factors associated with progression of aortic valve calcification in the general population. *Circ Cardiovasc Imaging* 2022;**15**:e013165.
32. Schnitzler JG, Hoogeveen RM, Ali L, Prange KHM, Waissi F, van Weeghel M, Bachmann JC, Versloot M, Borrelli MJ, Yeang C, De Kleijn DPV, Houtkooper RH, Koschinsky ML, de Winther MPJ, Groen AK, Witztum JL, Tsimikas S, Stroes ESG, Kroon J. Atherogenic lipoprotein(a) increases vascular glycolysis, thereby facilitating inflammation and leukocyte extravasation. *Circ Res* 2020;**126**:1346–1359.
33. van der Valk FM, Bekkering S, Kroon J, Yeang C, Van den Bossche J, van Buul JD, Ravandi A, Nederveen AJ, Verberne HJ, Scipione C, Nieuwdorp M, Joosten LA, Netea MG, Koschinsky ML, Witztum JL, Tsimikas S, Riksen NP, Stroes ES. Oxidized phospholipids on lipoprotein(a) elicit arterial wall inflammation and an inflammatory monocyte response in humans. *Circulation* 2016;**134**:611–624.
34. Wilson PWF. Evidence of systemic inflammation and estimation of coronary artery disease risk: a population perspective. *Am J Med* 2008;**121**:S15–S20.
35. Després AA, Perrot N, Poulin A, Tastet L, Shen M, Chen HY, Bourgeois R, Trottier M, Tessier M, Guimond J, Nadeau M, Engert JC, Thériault S, Bossé Y, Witztum JL, Couture P, Mathieu P, Dweck MR, Tsimikas S, Thanassoulis G, Pibarot P, Clavel MA, Arsenault BJ. Lipoprotein(a), oxidized phospholipids, and aortic valve microcalcification assessed by 18F-sodium fluoride positron emission tomography and computed tomography. *CJC Open* 2019;**1**:131–140.
36. Bourgeois R, Bourgault J, Despres AA, Perrot N, Guertin J, Girard A, Mitchell PL, Gotti C, Bourassa S, Scipione CA, Gaudreault N, Boffa MB, Koschinsky ML, Pibarot P, Droit A, Thériault S, Mathieu P, Bossé Y, Arsenault BJ. Lipoprotein proteomics and aortic valve transcriptomics identify biological pathways linking lipoprotein(a) levels to aortic stenosis. *Metabolites* 2021;**11**:459.
37. Habib SS, Al Masri AA. Relationship of high sensitivity C-reactive protein with presence and severity of coronary artery disease. *Pak J Med Sci* 2013;**29**:1425–1429.
38. Cowell SJ, Newby DE, Prescott RJ, Bloomfield P, Reid J, Northridge DB, Boon NA; Scottish Aortic Stenosis and Lipid Lowering Trial, Impact on Regression (SALTIRE) Investigators. A randomized trial of intensive lipid-lowering therapy in calcific aortic stenosis. *N Engl J Med* 2005;**352**:2389–2397.
39. Zheng KH, Tsimikas S, Pawade T, Kroon J, Jenkins WSA, Doris MK, White AC, Timmers NKLM, Hjortnaes J, Rogers MA, Aikawa E, Arsenault BJ, Witztum JL, Newby DE, Koschinsky ML, Fayad ZA, Stroes ESG, Boekholdt SM, Dweck MR. Lipoprotein(a) and oxidized phospholipids promote valve calcification in patients with aortic stenosis. *J Am Coll Cardiol* 2019;**73**:2150–2162.
40. Kaiser Y, van der Toorn JE, Singh SS, Zheng KH, Kavousi M, Sijbrands EJG, Stroes ESG, Vernooij MW, de Rijke YB, Boekholdt SM, Bos D. Lipoprotein(a) is associated with the onset but not the progression of aortic valve calcification. *Eur Heart J* 2022;**43**:3960–3967.
41. Shishehbor MH, Bhatt DL, Topol EJ. Using C-reactive protein to assess cardiovascular disease risk. *Cleve Clin J Med* 2003;**70**:634–640.
42. Pawade TA, Newby DE, Dweck MR. Calcification in aortic stenosis: the skeleton key. *J Am Coll Cardiol* 2015;**66**:561–577.
43. Perrot N, Thériault S, Dina C, Chen HY, Boekholdt SM, Rigade S, Després AA, Poulin A, Capoulade R, Le Tourneau T, Messika-Zeitoun D, Trottier M, Tessier M, Guimond J, Nadeau M, Engert JC, Khaw KT, Wareham NJ, Dweck MR, Mathieu P, Pibarot P, Schott JJ, Thanassoulis G, Clavel MA, Bossé Y, Arsenault BJ. Genetic variation in LPA, calcific aortic valve stenosis in patients undergoing cardiac surgery, and familial risk of aortic valve microcalcification. *JAMA Cardiol* 2019;**4**:620–627.