

UCLA

UCLA Previously Published Works

Title

Upregulated heme biosynthesis increases obstructive sleep apnea severity: a pathway-based Mendelian randomization study

Permalink

<https://escholarship.org/uc/item/4m95v0ns>

Journal

Scientific Reports, 12(1)

ISSN

2045-2322

Authors

Wang, Heming
Kurniansyah, Nuzulul
Cade, Brian E
[et al.](#)

Publication Date

2022

DOI


10.1038/s41598-022-05415-4

Peer reviewed




OPEN

Upregulated heme biosynthesis increases obstructive sleep apnea severity: a pathway-based Mendelian randomization study

Heming Wang^{1,2}, Nuzulul Kurniansyah¹, Brian E. Cade^{1,2}, Matthew O. Goodman^{1,2}, Han Chen^{3,4}, Daniel J. Gottlieb^{1,5}, Sina A. Gharib⁶, Shaun M. Purcell^{1,2,7}, Xihong Lin^{2,8,9}, Richa Saxena^{1,2,10,11}, Xiaofeng Zhu¹², Peter Durda¹³, Russel Tracy¹³, Yongmei Liu¹⁴, Kent D. Taylor¹⁵, W. Craig Johnson¹⁶, Stacey Gabriel², Joshua D. Smith¹⁷, François Aguet², Kirstin Ardlie², Tom Blackwell¹⁸, Alexander P. Reiner^{19,20}, Jerome I. Rotter¹⁵, Stephen S. Rich²¹, TOPMed Sleep Traits Working Group*, Susan Redline¹ & Tamar Sofer^{1,2,8}

Obstructive sleep apnea (OSA) is a common disorder associated with increased risk of cardiovascular disease and mortality. Iron and heme metabolism, implicated in ventilatory control and OSA comorbidities, was associated with OSA phenotypes in recent admixture mapping and gene enrichment analyses. However, its causal contribution was unclear. In this study, we performed pathway-level transcriptional Mendelian randomization (MR) analysis to investigate the causal relationships between iron and heme related pathways and OSA. In primary analysis, we examined the expression level of four iron/heme Reactome pathways as exposures and four OSA traits as outcomes using cross-tissue *cis*-eQTLs from the Genotype-Tissue Expression portal and published genome-wide summary statistics of OSA. We identify a significant putative causal association between up-regulated heme biosynthesis pathway with higher sleep time percentage of hypoxemia ($p = 6.14 \times 10^{-3}$). This association is supported by consistency of point estimates in one-sample MR in the Multi-Ethnic Study of Atherosclerosis using high coverage DNA and RNA sequencing data generated by the Trans-Omics for Precision Medicine project. Secondary analysis for 37 additional

¹Division of Sleep and Circadian Disorders, Brigham and Women's Hospital, Harvard Medical School, 221 Longwood Ave BLI 252, Boston, MA 02115, USA. ²Broad Institute of MIT and Harvard, Cambridge, MA 02142, USA. ³Department of Epidemiology, Human Genetics and Environmental Sciences, School of Public Health, Human Genetics Center, The University of Texas Health Science Center at Houston, Houston, TX 77030, USA. ⁴School of Biomedical Informatics, Center for Precision Health, The University of Texas Health Science Center at Houston, Houston, TX 77030, USA. ⁵VA Boston Healthcare System, Boston, MA, USA. ⁶Department of Medicine, Computational Medicine Core, Center for Lung Biology, UW Medicine Sleep Center, University of Washington, Seattle, WA, USA. ⁷Department of Psychiatry, Brigham and Women's Hospital, Harvard Medical School, Boston, MA 02115, USA. ⁸Department of Biostatistics, Harvard T. H. Chan School of Public Health, Boston, MA, USA. ⁹Department of Statistics, Harvard University, Cambridge, MA, USA. ¹⁰Massachusetts General Hospital, Center for Genomic Medicine, Harvard Medical School, Boston, MA, USA. ¹¹Department of Anesthesia, Critical Care and Pain Medicine, Massachusetts General Hospital, Harvard Medical School, Boston, MA, USA. ¹²Department of Population and Quantitative Health Sciences, School of Medicine, Case Western Reserve University, Cleveland, OH 44106, USA. ¹³Department of Pathology and Laboratory Medicine, The Robert Larner, M.D. College of Medicine at the University of Vermont, Burlington, VT 05446, USA. ¹⁴Divisions of Cardiology and Neurology, Duke University Medical Center, Durham, NC 27710, USA. ¹⁵Department of Pediatrics, The Institute for Translational Genomics and Population Sciences, The Lundquist Institute for Biomedical Innovation at Harbor-UCLA Medical Center, Torrance, CA 90502, USA. ¹⁶Department of Biostatistics, University of Washington, Seattle, WA 98195, USA. ¹⁷Northwest Genomic Center, University of Washington, Seattle, WA, USA. ¹⁸Department of Biostatistics, University of Michigan School of Public Health, Ann Arbor, MI, USA. ¹⁹Department of Epidemiology, University of Washington, Seattle, WA, USA. ²⁰Division of Public Health Sciences, Fred Hutchinson Cancer Research Center, Seattle, WA, USA. ²¹Center for Public Health Genomics, University of Virginia, Charlottesville, VA 22908, USA. *A list of authors and their affiliations appears at the end of the paper.  email: hwang@bwh.harvard.edu

iron/heme Gene Ontology pathways did not reveal any significant causal associations. This study suggests a causal association between increased heme biosynthesis and OSA severity.

Obstructive sleep apnea (OSA) is a common disorder affecting more than 20% of the middle aged and older population¹. OSA is associated with an increased risk of multiple cardiometabolic diseases including hypertension, diabetes, coronary artery disease and mortality². Despite its high prevalence and co-morbidities, current management and treatment approaches are limited, reflecting an incomplete understanding of the underlying molecular bases of the disorder.

Multiple lines of recent research suggest a novel role of iron/heme metabolism and related genes in the pathophysiology of OSA. Iron and heme metabolism influence a wide variety of biological systems relevant to OSA, including redox balance, inflammatory response, oxygen transport and energy metabolism, and may be causally associated with OSA through pathways that influence obesity, ventilatory control, or comorbidities^{3–6}. Heme degradation regulated by *heme oxygenase 1 and 2 (HMOX1 and HMOX2)* and their products (including carbon monoxide oxygen and biliverdin) have been implicated in carotid body sensing to hypoxia⁷. Our prior admixture mapping of OSA in a Hispanic/Latino-American cohort identified that the heme biosynthesis gene ferrochelatase (*FECH*) was associated with the apnea hypopnea index (AHI) and overnight hypoxemia traits⁸. Gene set enrichment analyses in recent transcriptome-wide studies also identified that the heme metabolic pathway was associated with OSA traits and was up-regulated in individuals with more severe disease or in response to withdrawal of continuous positive airway pressure (CPAP) treatment^{9,10}. It is therefore not clear whether the iron or heme related genes and pathways are causally associated with OSA, or rather are biomarkers of disease activity or severity.

Mendelian randomization (MR) is an inference method utilizing germline mutations as a natural experiment to investigate the causal relationship between an exposure and an outcome. There are three basic assumptions that need to be satisfied to ensure the validation of genetic instrument variables (IVs): (1) the IVs are strongly associated with the exposure; (2) the IVs are independent of unmeasured confounders for the associations between the IVs and outcome; and (3) the IVs are associated with the outcome exclusively through the effect on exposure (i.e., no horizontal pleiotropy)¹¹. Recent MR analyses have provided evidence of causal associations between higher BMI with increased OSA risk, snoring, and excessive daytime sleepiness^{12–14}. However, no MR study has interrogated transcriptional causal associations for OSA, which have been applied to other disease outcomes and revealed new molecular mechanisms¹⁵. In this study, we implement a novel pathway-based MR approach to investigate the causal relationship between expression levels of iron/heme related pathways.

Methods

Candidate iron/heme related pathways. We used Molecular Signatures Database (MSigDB) v7.4^{16,17} to search for genes in iron/heme related pathways. Four canonical pathways derived from the Reactome database—heme biosynthesis, heme degradation, heme signaling, and iron uptake and transport pathways—were investigated in primary analysis. Thirty-seven Gene Ontology (GO) pathways containing the word “iron”, “heme”, or “hemoglobin” were also analyzed in secondary analysis. A complete list of candidate pathways and genes are summarized in Supplementary Table 1. Assuming that genes in a pathway act together and affect OSA uniformly, we investigated a pathway effect on OSA using the averaged expressions of genes as the exposure. The overall analysis flow is described in Fig. 1.

Discovery analysis. The discovery analysis was performed using two-sample MR R package¹⁸ (<https://mrcieu.github.io/TwoSampleMR/>) and publicly available summary statistics from Genotype-Tissue Expression (GTEx) Portal¹⁹ (<http://gtexportal.org/home/>) and genome-wide association analyses (GWAS) of OSA traits^{20,21}. The exposure and outcomes were measured in non-overlapping datasets, which minimizes false-positive discoveries^{11,22}.

Exposure. We used a cross-tissue exposure effect, under the assumption that multiple physiological systems are involved OSA and can be estimated by averaging gene expression across multiple tissues. The exposure data were extracted from the gene expression data across 49 tissues in 838 donors from GTEx Portal (v8)¹⁹. The donors were comprised of 67.1% males and 84.6% whites, and 83.5% were aged 40–70 years old. A total of 347 iron/heme related genes were available. Local expression quantitative trait loci (cis-eQTLs; $p < 10^{-5}$) within 1 Mb of the transcription start site for a gene in each available tissue were calculated adjusted for batch effect, sequencing platform, sequencing protocol (PCR-based or PCR-free), sex, and population structure, using publicly available data through GTEx.

Outcome. The outcome summary statistics were extracted from multi-ancestry GWAS meta-analysis of four key OSA traits including AHI and the metrics of sleep associated hypoxemia: average and minimal oxygen saturation (SpO₂) during sleep and percent sleep time with SpO₂ < 90%^{20,21}. The total sample sizes varied from 19,733 to 22,736 and included 30–35% individuals of European ancestry background. Briefly, GWAS were performed on normalized OSA traits adjusting for sex, age, BMI (including interaction and quadratic terms), and population and family structure. Genome-wide summary statistics are available on the sleep knowledge portal (<https://sleep.hugeamp.org>).

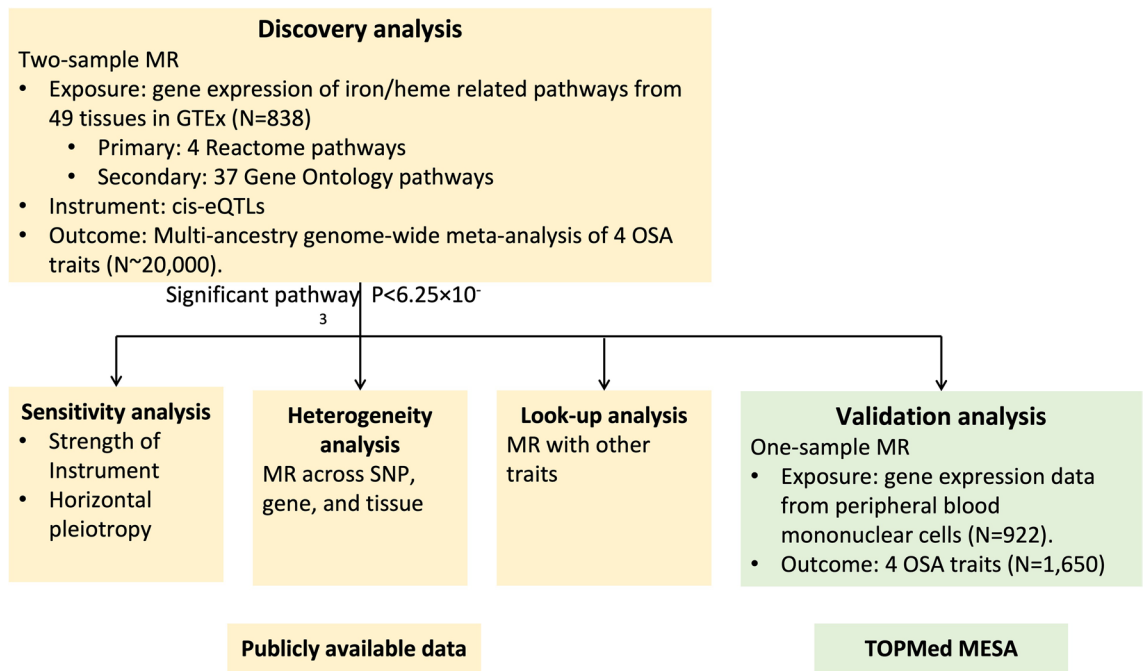


Figure 1. Analysis flow.

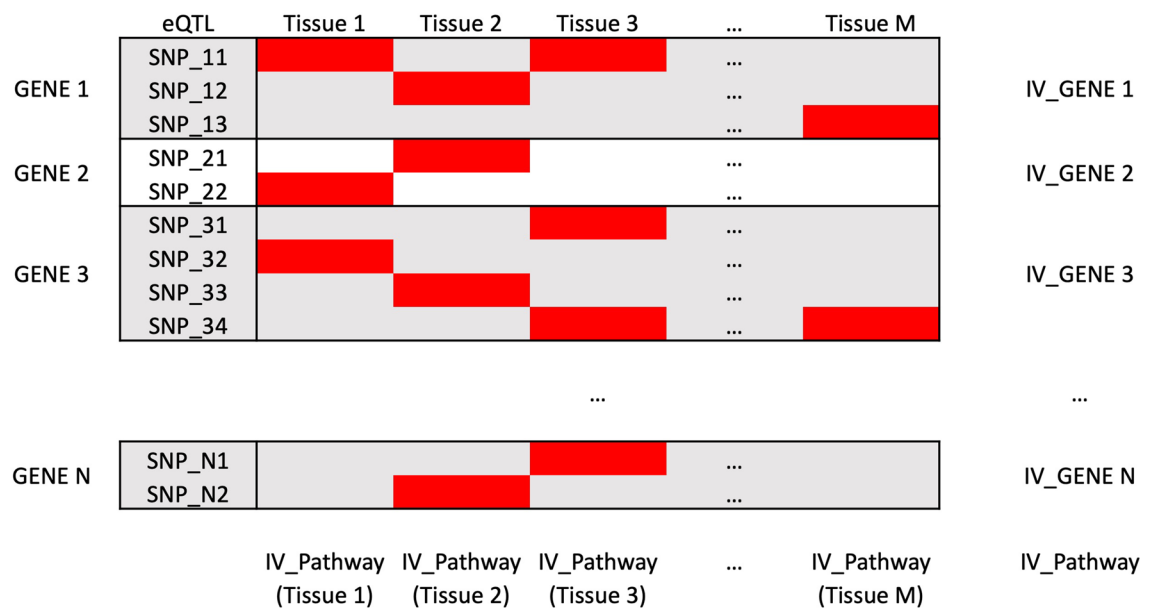


Figure 2. Illustration of the selection strategy of instrumental variables (IVs). The most significant cis-eQTLs in any tissues for a gene are highlighted in red.

Instrumental variables (IVs). The IVs for a given iron/heme related pathway were constructed as illustrated in Fig. 2. In brief cis-eQTL (with p value threshold $< 10^{-5}$) in any gene from a pathway of interest (highlighted in red color in Fig. 2) were selected to mimic the tissue specific gene-level expressions. Of these, the most significant cis-eQTLs in any tissue for a gene were selected as IVs to mimic the cross-tissue overall gene-level expressions as a strategy for maximizing the instrument strength²³. If a SNP was the most significant eQTL in more than one tissue (e.g., Fig. 2: SNP_11 in tissue 1 and 3), the cross-tissue SNP-gene association was calculated using the eQTL from the most significant tissue. We then selected the IVs of all available genes in a pathway to mimic an aggregate pathway-level expression effect, in which the exposure is the average cross-tissue expression across genes in the pathway (pathway effect defined earlier), i.e. under the assumption that $Y = (\sum_{j=1}^p E_j \beta_j) + X\alpha + \varepsilon = \beta_e \times (\sum_{j=1}^p \frac{\beta_j}{\beta_e} E_j) + X\alpha + \varepsilon$, and $E_{ij} = \beta_s \text{SNP}_{ij} + x_i \alpha_j + \varepsilon_{ij}$, where E_j is the expression level of the j -th gene in the pathway, β_e is the average effect of gene expression in the pathway and β_j/β_e represents potential heterogeneity of the effects of genes in the pathway, X and α are the covariate term and

effect. We also selected IVs within each tissue (each column in Fig. 2) to evaluate the heterogeneity effect across tissues. Before conducting MR, we performed linkage disequilibrium (LD) based clumping ($r^2 < 0.01$) to retain independent variants in all grouping strategies (gene, tissue, and pathway level). If a SNP IV was unavailable in the OSA outcome GWAS, we replaced it by proxy SNPs in high LD ($r^2 > 0.8$).

MR, sensitivity and heterogeneity analyses. We performed MR between each iron/heme related pathway expression as exposures and the four OSA trait as outcomes using the TwoSampleMR package¹⁸ to investigate the potential causal effect. The inverse variance weighted (IVW) method, which has better power but assumes no horizontal pleiotropy, was performed as the primary test. The significance level was calculated as p value $< 6.25 \times 10^{-3}$ (accounting for two independent OSA traits, estimated based on eigenvalues of their correlations²⁴, and four canonical pathways). Significant pathways were then followed up for a set of sensitivity and heterogeneity analyses. Note that this significance level is conservative given the pathway expression levels contain correlated data. The strength of IVs was evaluated by mean F statistic in the IVW test. $F \leq 10$ indicates a violation of the strong instrument assumption. We performed MR Egger regression to assess potential horizontal pleiotropy. A significant departure ($p < 0.05$) of the MR-Egger intercept indicates presence of horizontal pleiotropy. MR-Egger slope was also tested as a sensitivity analysis in considering pleiotropic effects. The strength of IVs was evaluated by I_{GX}^2 statistic in MR-Egger²⁵. $I_{GX}^2 \leq 0.9$ indicates a violation of the strong instrument assumption. We investigated the heterogeneity of MR across IVs, genes, and tissues. The heterogeneity of SNPs in IVW was evaluated using Cochran's Q statistics and leave-one-out analyses¹¹. The SNP heterogeneity of the MR-Egger fit was evaluated using Rücker's Q' statistic (an extended version of Cochran's Q statistic)²⁶. Significant Q and Q' suggests significant heterogeneity effects across IVs on the outcome. MR-PRESSO test was performed to detect (pleiotropic) IV outliers²⁷. We also evaluated the heterogeneity effects across genes and tissues by performing MR restricted to genes and tissues in significant pathways using IVW (for number of SNP IVs ≥ 2) or the Wald ratio test (for single SNP IV). We further looked up the effect of the significant pathways by performing MR with other health outcomes including blood disorders, blood cell traits, and key comorbidities of OSA using GWAS summary statistics from IEU GWAS database (<https://gwas.mrcieu.ac.uk/>).

Validation analysis. The significant pathway identified in discovery analysis ($p < 6.25 \times 10^{-3}$) was followed for validation using summary level one sample MR in the Multi-Ethnic Study of Atherosclerosis (MESA), a study that participated in the multi-ancestry OSA GWAS used in discovery analysis and collected omics data independent of sleep exam^{20,21}. The MESA is a longitudinal study of risks for subclinical cardiovascular disease in multiple ethnic groups (including Asian American, African American [AA], European American [EA], Hispanic/Latino American [HA])²⁸. In total, 6814 participants aged from 45 to 84 were recruited from 6 communities: Baltimore MD, Chicago IL, Los Angeles CA, New York NY, Minneapolis/St. Paul MN, and Winston-Salem NC at baseline in 2000 and then followed longitudinally, including an ancillary sleep exam in proximity to Exam 5 (2010–2013).

Instrumental variables. Whole-genome sequencing (WGS) and other omics (including epigenomics, transcriptomics, proteomics, and metabolomics) data were collected in 4595 individuals as part of the National Heart, Lung and Blood Institute (NHLBI) Trans-Omics for Precision Medicine (TOPMed) program²⁹, with both WGS and RNA-seq available for 966 MESA participants. In this analysis, we used the Freeze 8 release WGS data sequenced at the Broad Institute (mean depth $> 30\times$) and called by the TOPMed Informatics Resource Center at University of Michigan. All sequences were remapped to 1000 Genomes build 38 human genome references and annotated using a standard pipeline³⁰. Variants with minor allele count < 2 , minimum depth $< 10\times$ or missing rate $> 5\%$ were removed. Sample level quality control (QC) including Mendelian and sex concordance, and concordance with prior genotyping array data were performed. The same IVs used in discovery analyses were extracted for validation analyses.

Exposure. At MESA Exam 5, mRNA data were collected from peripheral blood mononuclear cell (PBMC), monocytes or T-cells. In this analysis we used gene level expression data from PBMCs. Quality of RNA samples was assessed using RNA Integrity Number (RIN, Agilent Bioanalyzer) before shipment to sequencing centers. PBMC samples were sequenced at the Broad Institute ($N = 498$), and at the North West Genomics Center (NWGC; $N = 468$) using harmonized protocols. Library preparation was performed using the Illumina TruSeq™ Stranded mRNA Sample Preparation Kit. RNA was sequenced as 2×101 bp paired-end reads on the Illumina HiSeq 4000 according to the manufacturer's protocols. Information about the RNA-seq pipeline used for TOPMed can be found in https://github.com/broadinstitute/gtex-pipeline/blob/master/TOPMed_RNAseq_pipeline.md under MESA RNA-seq pilot commit 725a2bc. Overall, there were 922 individuals with gene-level expression data in PBMC who had complete covariate data (described below), including 180 AAs, 437 EAs, and 305 HAs.

OSA outcomes. OSA measures were collected in MESA for 2060 individuals who did not report regular use of oral devices, nocturnal oxygen, or nightly positive airway pressure devices using in-home unattended 15-channel polysomnography (Compumedics Somte System, Abbotsford, AU) as described³¹. Sleep records were scored at a central Sleep Reading Center using standard criteria. In this paper, AHI was defined as the sum of all apneas plus hypopneas, each with a minimum 3% desaturation. Average and minimum SpO_2 during sleep and sleep time percentage below $SpO_2 < 90\%$ were extracted from the finger pulse oximetry recording during polysomnography. A total of 492 AAs, 698 EAs, and 460 HAs had WGS data, and 98 AAs, 200 EAs, and 164 HAs had both WGS and gene expression data.

Exposure	AHI				Average SpO ₂				Minimum SpO ₂				Sleep time% of SpO ₂ < 90%			
	nsnp	b	se	pval	nsnp	b	se	pval	nsnp	b	se	pval	nsnp	b	se	pval
Heme biosynthesis	29	0.007	0.005	0.189	30	-0.008	0.005	0.095	30	-0.008	0.005	0.078	30	0.012	0.004	6.14E-03
Heme degradation	33	0.002	0.004	0.691	33	-0.003	0.004	0.420	33	-0.001	0.004	0.769	33	-0.001	0.004	0.815
Heme signaling	128	-0.001	0.003	0.819	129	-0.002	0.003	0.580	129	-0.003	0.003	0.301	129	0.001	0.003	0.761
Iron uptake and transport	138	-0.004	0.003	0.191	138	0.001	0.003	0.729	138	0.002	0.002	0.335	138	-0.001	0.002	0.534

Table 1. Discovery two sample MR of canonical iron/heme related pathways (reactome) on OSA traits using Inverse Weighted Variance method.

MR analysis. We performed summary level one sample MR between the most significant iron/heme related pathways and OSA traits using the IVW method. Because we used the summary level IV-exposure-outcome association statistics in MESA, to increase statistical power we did not restrict our analyses to individuals with both expression and OSA measures. The IV-exposure associations were calculated in 922 individuals with WGS and gene expression data. Gene expression data were log transformed (after replacing counts of 0 with half the minimum observed values in the sample) and adjusted for age, sex, BMI, batch effects (shipment, plate, and sequencing site), study site, 11 genotype PCs, and race/ethnicity in analyses that included all individuals together. Genetic association analysis further used the fully-adjusted two-stage procedure for rank-normalizing residuals³². The IV-outcome associations were calculated in 1650 individuals with WGS and OSA measures. OSA traits were rank-normalized and adjusted for age, sex, BMI, study sites, genotyping PC, and race/ethnicity, via the fully adjusted two-stage procedure³². We also performed ancestry specific analyses restricted to AAs, EAs, and HAs respectively (without adjusting for ancestry).

Ethics declarations. This work was approved by the Institutional Review Board of Mass General Brigham and complies with all relevant ethical regulations. All study participants provided informed consent.

Results

Discovery MR. The results of the primary two-sample MR analyses between the exposures of each of the four canonical iron/heme related pathways and four OSA traits using IVW approach are summarized in Table 1. We identified a significant putative causal association between increased heme biosynthesis pathway expression and higher sleep time% of SpO₂ < 90% ($\beta = 0.012$, $p = 6.14 \times 10^{-3}$). Associations were also suggested between increased heme biosynthesis pathway expression with higher AHI ($\beta = 0.007$, $p = 0.189$), lower average SpO₂ ($\beta = -0.008$, $p = 0.078$) and minimum SpO₂ ($\beta = -0.008$, $p = 0.095$) (Table 1 and Fig. 3). These results were consistent with higher heme biosynthesis pathway expression associated with more severe OSA. The IV-exposure (heme biosynthesis pathway) and IV-outcome (OSA traits) associations in the discovery analysis are provided in Supplementary Table 2. The IVs were sufficiently strongly associated with the exposure in the IVW test ($\bar{F} = 52 > 10$).

We then performed MR Egger for this pathway to detect horizontal pleiotropy. The strength of instruments was sufficient for MR Egger regression ($I_{GX}^2 = 0.98 > 0.9$). A moderate horizontal pleiotropy effect was found for AHI (MR Egger intercept $p = 0.013$; Table 2) but not for the other traits. The sensitivity analyses using MR Egger slope (i.e., considering the potential horizontal pleiotropy effects) for all four OSA traits showed consistent association directions with IVW analysis, suggesting that the putative association we observed was not driven by pleiotropic mechanisms (Table 2 and Fig. 3). The MR Egger slope test was significant for AHI, average SpO₂, and sleep time% of SpO₂ < 90% ($p = 0.031$, 0.030 , and 0.018 , respectively).

No significant heterogeneity of effects across the IVs were observed for any OSA trait (Q and Q' $p > 0.05$ in Table 2). Leave-one-out IVW analysis showed consistent association for all traits (Supplementary Fig. 1). MR-PRESSO did not identify any IV outliers (Table 2). However, we observed heterogeneity effects across genes and tissues. Stronger effects of increased heme biosynthesis on increased OSA severity were observed in *FECH* and *UROD* genes, and in adiposity, esophagus mucosa, testis, lung, and artery tissues (see "Discussion") (Supplementary Table 3, Supplementary Figs. 2 and 3).

Secondary analyses in GO pathways did not reveal any significant causal associations for OSA traits ($p > 0.05$; Supplementary Table 4).

Validation MR. The MESA sample has 46.7% males, mean aged 68.6 years old and mean BMI 29.2 kg/m², and 79.6% of the sample was classified with OSA (defined as AHI > 5) (Supplementary Table 5). The distributions of OSA traits and their correlations with demographic variables in MESA are shown in Supplementary Figs. 4 and 5. Similar to prior studies^{20,21}, increasing AHI was observed with older age, male sex and higher BMI, and was highly correlated with all sleep-related hypoxemia measures (spearman correlation $\rho = -0.57$, -0.73 , and 0.76 with average, minimum SpO₂, and sleep time% of SpO₂ < 90%).

Although not statistically significant, we observed the same pattern for MR association directions between the increased heme biosynthesis expression with higher sleep time% of SpO₂ < 90% ($\beta = 0.438$, $p = 0.187$), lower minimum SpO₂ ($\beta = -0.387$, $p = 0.184$), and higher AHI ($\beta = 0.713$, $p = 0.265$) (Fig. 4 and Supplementary Table 6) as compared with the discovery analysis. In ancestry stratified analyses, we observed consistent directions (with

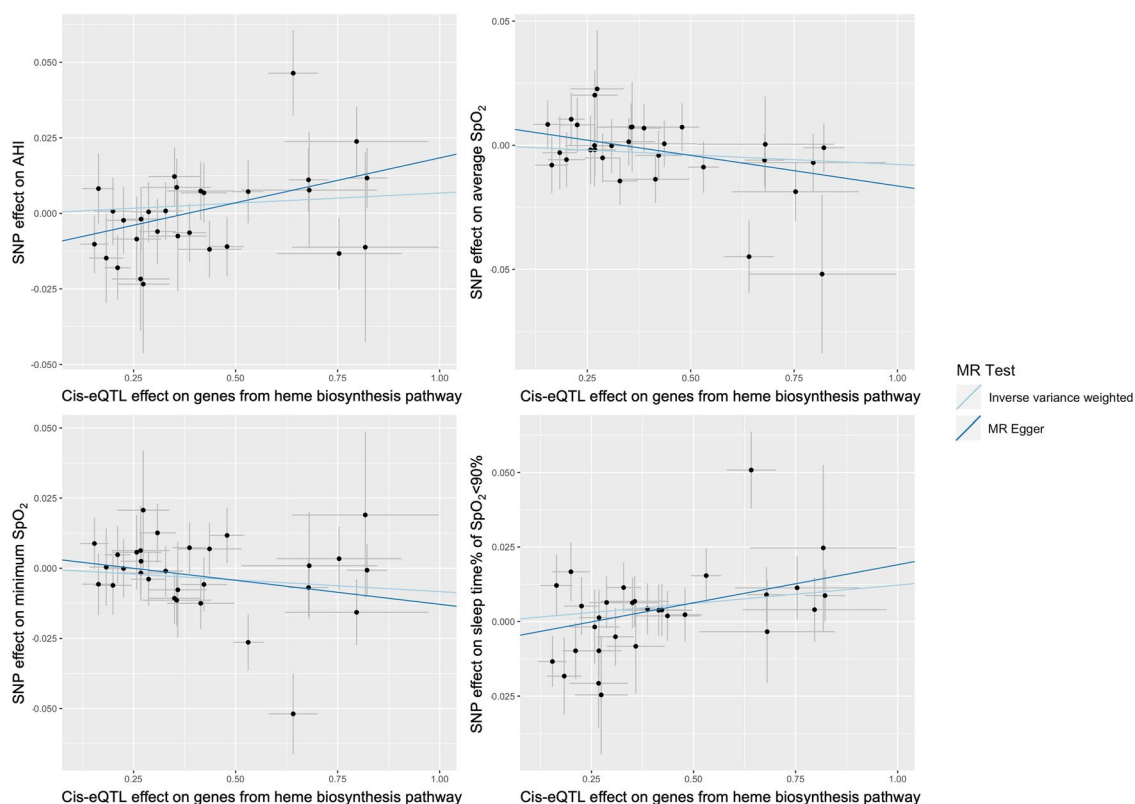


Figure 3. Scatter plots of SNP effects on the expressions of genes from Heme Biosynthetic Process pathway vs OSA traits in discovery analysis.

Outcome	Method	Estimate	S.E.	<i>p</i> value	Heterogeneity statistic
AHI	IVW	0.007	0.005	0.189	Q = 27.979 (<i>p</i> = 0.412)
	MR egger intercept	0.030	0.011	0.013	
	MR egger slope	-0.011	0.005	0.031	Q' = 33.367 (<i>p</i> = 0.222)
	MR-PRESSO	0.007	0.005	0.200	
Average SpO ₂	IVW	-0.008	0.005	0.095	Q = 25.307 (<i>p</i> = 0.611)
	MR egger intercept	0.008	0.005	0.095	
	MR egger slope	-0.025	0.011	0.030	Q' = 28.301 (<i>p</i> = 0.502)
	MR-PRESSO	-0.008	0.005	0.102	
Minimum SpO ₂	IVW	-0.008	0.005	0.078	Q = 31.140 (<i>p</i> = 0.311)
	MR egger intercept	0.004	0.005	0.384	
	MR egger slope	-0.017	0.011	0.131	Q' = 32.008 (<i>p</i> = 0.320)
	MR-PRESSO	-0.008	0.005	0.089	
Sleep time% of SpO ₂ < 90%	IVW	0.012	0.004	0.006	Q = 30.966 (<i>p</i> = 0.319)
	MR egger intercept	-0.006	0.004	0.157	
	MR egger slope	0.026	0.010	0.018	Q' = 33.307 (<i>p</i> = 0.266)
	MR-PRESSO	0.012	0.004	0.010	

Table 2. MR sensitivity analysis between Reactome heme biosynthesis pathway and OSA traits.

the discovery MR analyses) for all OSA traits in EAs and HAs, but inconsistent directions of the associations for average SpO₂ in AAs (Fig. 4 and Supplementary Table 6).

MR association for heme biosynthesis pathway. To understand the biological function of the heme biosynthesis pathway, we performed two-sample MR between this pathway and other health outcomes. We identified a significant causal association between increased expression of the heme biosynthesis pathway with reduced risk of iron deficiency anemia (IVW $\beta = -0.0003$, $p = 0.028$ and MR-Egger $\beta = -0.001$, $p = 0.027$; Supplementary Table 6), consistent with prior knowledge³³. We did not identify significant causal associations with

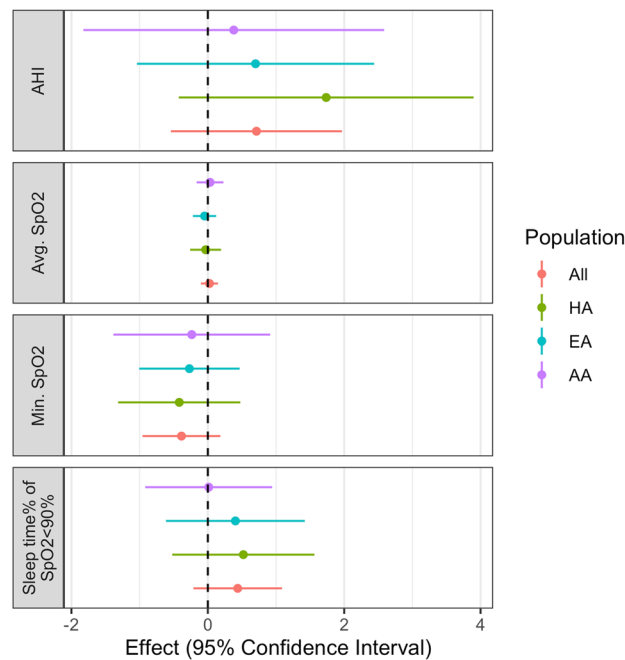


Figure 4. Validation MR analysis of the effect of upregulated Heme Biosynthetic Process pathway on OSA traits in MESA.

specific blood cell traits or comorbid traits including obesity, asthma, type 2 diabetes, blood pressure, stroke, and cardiovascular, kidney, liver diseases (Supplementary Table 7).

Discussion

This is the first MR analysis interrogating the causal association between molecular pathways and OSA. We implemented a novel pathway-based framework that leveraged information on gene expression and GWAS data, identifying a potential causal association between up-regulation in the heme biosynthesis pathway with increased OSA severity using publicly available data. This association is supported by sensitivity analyses and consistency of the point estimates in the validation analysis in a modestly sized sample with both gene expression and OSA measures.

Heme biosynthesis is a highly conserved process across species that forms heme (iron-protoporphyrin IX), a significant component of oxygen storage and transport proteins (e.g., hemoglobin, myoglobin) and enzymes involved in oxidative phosphorylation³⁴, in the mitochondria and cytosol. Deficiency of heme synthesis enzymes results in the accumulation of intermediate porphyrins, which is associated with porphyria, a group of rare blood disorders characterized by various degrees of neurological deficits and photodermatous lesions³⁵. Lack of heme and hemoproteins are also associated with some types of anemia³⁵. We were able to confirm a causal association between the increased expression of heme biosynthetic process pathway and decreased risk of iron deficiency anemia (Supplementary Table 6).

However, increased expression of heme synthesis enzymes may lead to excess heme. Cellular free heme is toxic and catalyzes the formation of reactive oxygen species, and thus increases oxidative stress³⁶, which may augment the effects of intermittent hypoxia (a cardinal physiological manifestation of OSA), causing lung injury and subsequent gas exchange deficits, potentially leading to more severe sleep related hypoxemia in a setting of OSA²¹. In addition, heme may modulate ventilatory responses to hypoxia. In particular, heme degradation products (including carbon monoxide and biliverdin) have been shown to influence carotid body (the primary peripheral oxygen chemoreceptor) responses to hypoxia in rodent⁷, providing a ventilatory-related pathway linking heme to propensity for OSA. However, we did not detect any causal association between the heme degradation pathway with OSA traits. Future analyses using physiologically meaningful endotypes such as those that directly characterize hypoxia sensing^{37–39} and model organism research are needed to validate our hypothesis and rule out alternative mechanisms.

In this study, we observed some degree of heterogeneity of the MR associations across tissues (Supplementary Fig. 2). The largest effects of the upregulated heme biosynthesis pathway on increased OSA severity were observed using data from adipose tissue, testis, lung, esophagus mucosa, and artery tissues. Smaller effects were observed for data from whole blood. Validation analysis using expression data from blood cells therefore may be underpowered. Note that, the effect directions of heme biosynthesis on sleep time% of SpO₂ < 90% (the most significant effect in our discovery analysis) is consistent across all tissues.

We also observed heterogeneity of the MR associations for heme biosynthesis on OSA across genes (Supplementary Fig. 3 and Supplementary Table 3). The largest effect of increased gene expression on increased OSA

severity was observed for *FECH*, the last enzyme of this pathway that inserts iron to the protoporphyrin IX to generate heme. The effect direction is consistent with our prior admixture mapping results⁴⁰. In the gene specific MR analyses for this pathway, we additionally identified potential causal associations for *uroporphyrinogen decarboxylase* (*UROD*). The increased expression of *UROD* was significantly associated with a more severe minimum SpO₂ (IVW beta = -0.042 and *p* = 0.004).

We also performed ancestry specific MR analyses in the MESA sample. We observed consistent directions of the associations in HA and EAs, but inconsistent directions for minimum SpO₂ in AAs. This observation echoes our admixture mapping findings of *FECH* eQTLs which were driven by associations for higher AHI and sleep time% of SpO₂ < 90% in European and Amerindian backgrounds⁴⁰. While speculative, it is possible that there are distinct evolutionary pressures that influence the linkage between ventilatory and blood phenotypes across continents (e.g., reflecting adaptation to high altitude in Amerindians or to resistance to malaria in Africans)⁴¹.

This study has several strengths. The use of MR limits the unmeasured confounding bias and possible reverse causation between the instrument and the exposure because genetic variants are fixed at conception¹¹. In the discovery analyses, we applied a well-powered two-sample MR analysis using publicly available summary statistics generated from a large gene expression database and OSA GWAS without need to access to original data. The two-sample design (no overlap between the exposure sample and outcome sample) further reduces the potential sample selection bias²². We implemented a set of sensitivity and heterogeneity analyses and validation analyses to interrogate the consistency of our findings in support of the potential causal association between heme biosynthesis pathway and OSA. The validity of our approach is supported by confirming a causal association between increased heme biosynthetic process expression and decreased risk of iron deficiency anemia (Supplementary Table 6).

This study also has several limitations. First, the effect sizes do not reflect the true effects of a potential clinical intervention. This is partly because MR estimates the cumulative effects of a lifelong exposure while the expression data were collected at a specific time point. It is also challenging to quantify pathway level expression across tissues in humans. Second, we were not able to formally confirm our findings in MESA (*p* > 0.05), which may be due to the insufficient statistical power in small samples, restriction to samples from peripheral blood cells, and heterogeneity effects across ancestry groups. However, we still observed the same association directions of point estimates in the validation analyses. Future analyses using experimental data from additional tissues (e.g., carotid body) may help elucidate more specific mechanisms. Analyses of a larger samples are needed to replicate our results. Third, given that we observed ancestry specific effects in the validation analyses, our primary analyses using multi-ancestry samples may reduce statistical power. Finally, due to the restricted use of cis-eQTL data (not GWAS of gene expressions), we did not test the reverse causality. Sustained hypoxia is associated with erythropoiesis and polycythemia⁴². Clinically evident differences in hematocrit levels are, however, rarely observed with OSA, but rather associate with sustained daytime hypoxemia rather than the intermittent nocturnal hypoxemia characteristics of OSA⁴³. Nonetheless, a recent study showed that heme metabolism pathway is upregulated by intermittent hypoxia as shown by the results of continuous positive airway pressure (CPAP) withdrawal in OSA patients¹⁰. It is possible that there is bi-directional causal association between heme biosynthesis and OSA. While tracking erythropoietin levels has been suggested as a biomarker of OSA severity⁴⁴, our data support the potential use of gene expression levels in heme biosynthesis pathways as a promising biomarker.

In conclusion, this study suggests a potential causal association between increased heme biosynthesis and OSA severity. Future work is needed to identify the mechanisms for this association, to address reverse causality, and evaluate utility of assessing gene expression of heme biosynthesis pathways as clinical biomarkers of disease susceptibility as well as disease severity.

Data availability

The datasets used in the current study are available on dbGaP. Analysis code and intermediate results are available from the corresponding author on reasonable request.

Received: 13 October 2021; Accepted: 7 January 2022

Published online: 27 January 2022

References

- Benjafield, A. V. *et al.* Estimation of the global prevalence and burden of obstructive sleep apnoea: A literature-based analysis. *Lancet Respir. Med.* **7**, 687–698. [https://doi.org/10.1016/S2213-2600\(19\)30198-5](https://doi.org/10.1016/S2213-2600(19)30198-5) (2019).
- Drager, L. F. *et al.* Sleep apnea and cardiovascular disease: Lessons from recent trials and need for team science. *Circulation* **136**, 1840–1850. <https://doi.org/10.1161/CIRCULATIONAHA.117.029400> (2017).
- Galaris, D. & Pantopoulos, K. Oxidative stress and iron homeostasis: Mechanistic and health aspects. *Crit. Rev. Clin. Lab. Sci.* **45**, 1–23. <https://doi.org/10.1080/10408360701713104> (2008).
- Fernandez-Real, J. M., McClain, D. & Manco, M. Mechanisms linking glucose homeostasis and iron metabolism toward the onset and progression of type 2 diabetes. *Diabetes Care* **38**, 2169–2176. <https://doi.org/10.2337/dc14-3082> (2015).
- Neves, J., Haider, T., Gassmann, M. & Muckenthaler, M. U. Iron homeostasis in the lungs—A balance between health and disease. *Pharmaceuticals (Basel)* <https://doi.org/10.3390/ph12010005> (2019).
- Cornelissen, A., Guo, L., Sakamoto, A., Virmani, R. & Finn, A. V. New insights into the role of iron in inflammation and atherosclerosis. *EBioMedicine* **47**, 598–606. <https://doi.org/10.1016/j.ebiom.2019.08.014> (2019).
- Peng, Y. J. *et al.* Complementary roles of gasotransmitters CO and H₂S in sleep apnea. *Proc. Natl. Acad. Sci. USA* **114**, 1413–1418. <https://doi.org/10.1073/pnas.1620717114> (2017).
- Wang, H. *et al.* Admixture mapping identifies novel loci for obstructive sleep apnea in Hispanic/Latino Americans. *Hum. Mol. Genet.* **28**, 675–687. <https://doi.org/10.1093/hmg/ddy387> (2019).
- Sofer, T. *et al.* Low oxygen saturation during sleep reduces CD1D and RAB20 expressions that are reversed by CPAP therapy. *EBioMedicine* **56**, 102803. <https://doi.org/10.1016/j.ebiom.2020.102803> (2020).

10. Turnbull, C. D. *et al.* Transcriptomics identify a unique intermittent hypoxia-mediated profile in obstructive sleep apnea. *Am. J. Respir. Crit. Care Med.* **201**, 247–250. <https://doi.org/10.1164/rccm.201904-0832LE> (2020).
11. Davies, N. M., Holmes, M. V. & Davey Smith, G. Reading Mendelian randomisation studies: A guide, glossary, and checklist for clinicians. *BMJ* **362**, k601. <https://doi.org/10.1136/bmj.k601> (2018).
12. Strausz, S. *et al.* Genetic analysis of obstructive sleep apnoea discovers a strong association with cardiometabolic health. *Eur. Respir. J.* <https://doi.org/10.1183/13993003.03091-2020> (2020).
13. Campos, A. I. *et al.* Insights into the aetiology of snoring from observational and genetic investigations in the UK Biobank. *Nat. Commun.* **11**, 817. <https://doi.org/10.1038/s41467-020-14625-1> (2020).
14. Wang, H. *et al.* Genome-wide association analysis of self-reported daytime sleepiness identifies 42 loci that suggest biological subtypes. *Nat. Commun.* **10**, 3503. <https://doi.org/10.1038/s41467-019-11456-7> (2019).
15. Richardson, T. G., Hemani, G., Gaunt, T. R., Relton, C. L. & Davey Smith, G. A transcriptome-wide Mendelian randomization study to uncover tissue-dependent regulatory mechanisms across the human phenome. *Nat. Commun.* **11**, 185. <https://doi.org/10.1038/s41467-019-13921-9> (2020).
16. Subramanian, A. *et al.* Gene set enrichment analysis: A knowledge-based approach for interpreting genome-wide expression profiles. *Proc. Natl. Acad. Sci. USA* **102**, 15545–15550. <https://doi.org/10.1073/pnas.0506580102> (2005).
17. Liberzon, A. *et al.* Molecular signatures database (MSigDB) 3.0. *Bioinformatics* **27**, 1739–1740. <https://doi.org/10.1093/bioinformatics/btr260> (2011).
18. Hemani, G., Tilling, K. & Davey Smith, G. Orienting the causal relationship between imprecisely measured traits using GWAS summary data. *PLoS Genet.* **13**, e1007081. <https://doi.org/10.1371/journal.pgen.1007081> (2017).
19. Consortium, G. T. The GTEx Consortium atlas of genetic regulatory effects across human tissues. *Science* **369**, 1318–1330. <https://doi.org/10.1126/science.aaz1776> (2020).
20. Chen, H. *et al.* Multiethnic meta-analysis identifies RAI1 as a possible obstructive sleep apnea-related quantitative trait locus in men. *Am. J. Respir. Cell Mol. Biol.* **58**, 391–401. <https://doi.org/10.1165/rccm.2017-0237OC> (2018).
21. Cade, B. E. *et al.* Associations of variants in the hexokinase 1 and interleukin 18 receptor regions with oxyhemoglobin saturation during sleep. *PLoS Genet.* **15**, e1007739. <https://doi.org/10.1371/journal.pgen.1007739> (2019).
22. Gkatzionis, A. & Burgess, S. Contextualizing selection bias in Mendelian randomization: How bad is it likely to be? *Int. J. Epidemiol.* **48**, 691–701. <https://doi.org/10.1093/ije/dyy202> (2019).
23. Walker, V. M., Kehoe, P. G., Martin, R. M. & Davies, N. M. Repurposing antihypertensive drugs for the prevention of Alzheimer's disease: A Mendelian randomization study. *Int. J. Epidemiol.* **49**, 1132–1140. <https://doi.org/10.1093/ije/dyz155> (2020).
24. Li, J. & Ji, L. Adjusting multiple testing in multilocus analyses using the eigenvalues of a correlation matrix. *Heredity (Edinb.)* **95**, 221–227. <https://doi.org/10.1038/sj.hdy.6800717> (2005).
25. Bowden, J. *et al.* Assessing the suitability of summary data for two-sample Mendelian randomization analyses using MR-Egger regression: The role of the I² statistic. *Int. J. Epidemiol.* **45**, 1961–1974. <https://doi.org/10.1093/ije/dyw220> (2016).
26. Bowden, J. *et al.* Improving the visualization, interpretation and analysis of two-sample summary data Mendelian randomization via the Radial plot and Radial regression. *Int. J. Epidemiol.* **47**, 2100. <https://doi.org/10.1093/ije/dyy265> (2018).
27. Verbanck, M., Chen, C. Y., Neale, B. & Do, R. Detection of widespread horizontal pleiotropy in causal relationships inferred from Mendelian randomization between complex traits and diseases. *Nat. Genet.* **50**, 693–698. <https://doi.org/10.1038/s41588-018-0099-7> (2018).
28. Bild, D. E. *et al.* Multi-ethnic study of atherosclerosis: Objectives and design. *Am. J. Epidemiol.* **156**, 871–881. <https://doi.org/10.1093/aje/kwfl13> (2002).
29. Taliun, D. *et al.* Sequencing of 53,831 diverse genomes from the NHLBI TOPMed Program. *Nature* **590**, 290–299. <https://doi.org/10.1038/s41586-021-03205-y> (2021).
30. Regier, A. A. *et al.* Functional equivalence of genome sequencing analysis pipelines enables harmonized variant calling across human genetics projects. *Nat. Commun.* **9**, 4038. <https://doi.org/10.1038/s41467-018-06159-4> (2018).
31. Chen, X. *et al.* Racial/ethnic differences in sleep disturbances: The multi-ethnic study of atherosclerosis (MESA). *Sleep* **38**, 877–888. <https://doi.org/10.5665/sleep.4732> (2015).
32. Sofer, T. *et al.* A fully adjusted two-stage procedure for rank-normalization in genetic association studies. *Genet. Epidemiol.* **43**, 263–275. <https://doi.org/10.1002/gepi.22188> (2019).
33. Camaschella, C. Iron deficiency. *Blood* **133**, 30–39. <https://doi.org/10.1182/blood-2018-05-815944> (2019).
34. Ogun, A. S., Joy, N. V. & Valentine, M. *StatPearls* (2021).
35. Phillips, J. D. Heme biosynthesis and the porphyrias. *Mol. Genet. Metab.* **128**, 164–177. <https://doi.org/10.1016/j.ymgme.2019.04.008> (2019).
36. Chiabrando, D., Vinchi, F., Fiorito, V., Mercurio, S. & Tolosano, E. Heme in pathophysiology: A matter of scavenging, metabolism and trafficking across cell membranes. *Front. Pharmacol.* **5**, 61. <https://doi.org/10.3389/fphar.2014.00061> (2014).
37. Sands, S. A. *et al.* Phenotyping pharyngeal pathophysiology using polysomnography in patients with obstructive sleep apnea. *Am. J. Respir. Crit. Care Med.* **197**, 1187–1197. <https://doi.org/10.1164/rccm.201707-1435OC> (2018).
38. Sands, S. A. *et al.* Quantifying the arousal threshold using polysomnography in obstructive sleep apnea. *Sleep* <https://doi.org/10.1093/sleep/zsx183> (2018).
39. Landry, S. A. *et al.* Ventilatory control sensitivity in patients with obstructive sleep apnea is sleep stage dependent. *Sleep* <https://doi.org/10.1093/sleep/zsy040> (2018).
40. Wang, H. *et al.* Admixture mapping identifies novel loci for obstructive sleep apnea in Hispanic/Latino Americans. *Hum. Mol. Genet.* <https://doi.org/10.1093/hmg/ddy387> (2018).
41. Sigala, P. A., Crowley, J. R., Henderson, J. P. & Goldberg, D. E. Deconvoluting heme biosynthesis to target blood-stage malaria parasites. *Elife* <https://doi.org/10.7554/eLife.09143> (2015).
42. Song, J., Sundar, K., Gangaraju, R. & Prchal, J. T. Regulation of erythropoiesis after normoxic return from chronic sustained and intermittent hypoxia. *J. Appl. Physiol.* **1985**(123), 1671–1675. <https://doi.org/10.1152/jappphysiol.00119.2017> (2017).
43. Hoffstein, V., Herridge, M., Mateika, S., Redline, S. & Strohl, K. P. Hematocrit levels in sleep apnea. *Chest* **106**, 787–791. <https://doi.org/10.1378/chest.106.3.787> (1994).
44. Fleming, W. E. *et al.* Use of blood biomarkers to screen for obstructive sleep apnea. *Nat. Sci. Sleep* **10**, 159–167. <https://doi.org/10.2147/NSS.S164488> (2018).

Acknowledgements

This work was supported by the National Heart, Lung, and Blood Institute (NHLBI) Grant R01HL153814 and Sleep Research Society Foundation Career Development Award 018-JP-18 (to H.W.), NHLBI R35HL135818 (to S.R.). Molecular data for the Trans-Omics in Precision Medicine (TOPMed) program was supported by the National Heart, Lung and Blood Institute (NHLBI). Genome sequencing and RNASeq for “NHLBI TOPMed: MESA and MESA Family AA-CAC” (phs001416.v2.p1) was performed at the Broad Institute Genomics Center (3U54HG003067-13S1, HHSN268201600034I). Core support including centralized genomic read mapping and genotype calling, along with variant quality metrics and filtering were provided by the TOPMed Informatics

Research Center (3R01HL-117626-02S1; contract HHSN268201800002I). Core support including phenotype harmonization, data management, sample-identity QC, and general program coordination were provided by the TOPMed Data Coordinating Center (R01HL-120393; U01HL-120393; contract HHSN268201800001I). We gratefully acknowledge the studies and participants who provided biological samples and data for TOPMed. The MESA projects are conducted and supported by NHLBI in collaboration with MESA investigators. Support for MESA is provided by contracts 75N92020D00001, HHSN268201500003I, N01-HC-95159, 75N92020D00005, N01-HC-95160, 75N92020D00002, N01-HC-95161, 75N92020D00003, N01-HC-95162, 75N92020D00006, N01-HC-95163, 75N92020D00004, N01-HC-95164, 75N92020D00007, N01-HC-95165, N01-HC-95166, N01-HC-95167, N01-HC-95168, N01-HC-95169, UL1-TR-000040, UL1-TR-001079, and UL1-TR-001420. Also supported in part by the National Center for Advancing Translational Sciences, CTSI grant UL1TR001881, and the National Institute of Diabetes and Digestive and Kidney Disease Diabetes Research Center (DRC) Grant DK063491 to the Southern California Diabetes Endocrinology Research Center.

Author contributions

H.W., S.R. and T.S. designed this study. H.W., N.K., B.E.C., M.O.G., J.I.R., S.S.R., S.R. and T.S. participated in data acquisition, analysis and/or interpretation of data. H.W., A.P.R., J.I.R., S.S.R., S.R. and T.S. drafted the manuscript. All authors reviewed and approved the final version of the paper that was submitted to the journal.

Competing interests

The authors declare no competing interests.

Additional information

Supplementary Information The online version contains supplementary material available at <https://doi.org/10.1038/s41598-022-05415-4>.

Correspondence and requests for materials should be addressed to H.W.

Reprints and permissions information is available at www.nature.com/reprints.

Publisher's note Springer Nature remains neutral with regard to jurisdictional claims in published maps and institutional affiliations.



Open Access This article is licensed under a Creative Commons Attribution 4.0 International License, which permits use, sharing, adaptation, distribution and reproduction in any medium or format, as long as you give appropriate credit to the original author(s) and the source, provide a link to the Creative Commons licence, and indicate if changes were made. The images or other third party material in this article are included in the article's Creative Commons licence, unless indicated otherwise in a credit line to the material. If material is not included in the article's Creative Commons licence and your intended use is not permitted by statutory regulation or exceeds the permitted use, you will need to obtain permission directly from the copyright holder. To view a copy of this licence, visit <http://creativecommons.org/licenses/by/4.0/>.

© The Author(s) 2022

TOPMed Sleep Traits Working Group

Najib Ayas²², Deepika Burkardt²³, Brian Cade^{1,2}, Han Chen^{3,4}, Danielle Clarkson-Townsend^{1,2}, Joyita Dutta²⁴, Lynette Ekunwe²⁵, Caitlin Floyd²⁶, Sina Gharib⁶, Matthew Goodman^{1,2}, Daniel Gottlieb^{1,5}, Einat Granot-Hershkovitz¹, Lauren Hale²⁷, Patrick Hanly²⁸, Scott Heemann²⁹, Chao Hsiung³⁰, Tianyi Huang^{1,2,8}, Anne Justice³¹, Brendan Keenan³², Jacqueline Lane^{1,2,10}, Jingjing Liang¹², Xihong Lin^{2,8,9}, Jiayan Liu¹, Noah Lorincz-Comi¹², Ulysses Magalang³³, Diego R. Mazzotti³⁴, Hao Mei²⁵, Julie Mikulla²³, Amy Miller²⁶, Miremad Moafi-Madani³⁵, Debby Ngo³⁶, Jeff O'Connell³⁷, Heather Ochs-Balcom³⁸, Allan Pack³², Sanjay Patel³⁹, Shaun Purcell^{1,2,7}, Susan Redline¹, Richa Saxena^{1,2,10,11}, Rachel Soemedi¹, Tamar Sofer^{1,2,8}, Jae Hoon Sul⁴⁰, Shamil Sunyaev^{1,2}, Cynthia Tchio^{1,2}, Heming Wang^{1,2}, Ava Wilson⁴¹, Lluvia Xia¹⁶, Man Zhang³⁷, Hufeng Zhou⁸ & Xiaofeng Zhu¹²

²Broad Institute of MIT and Harvard, Cambridge, MA 02142, USA. ⁷Department of Psychiatry, Brigham and Women's Hospital, Harvard Medical School, Boston, MA 02115, USA. ⁸Department of Biostatistics, Harvard T. H. Chan School of Public Health, Boston, MA, USA. ⁹Department of Statistics, Harvard University, Cambridge, MA, USA. ¹⁰Massachusetts General Hospital, Center for Genomic Medicine, Harvard Medical School, Boston, MA, USA. ¹¹Department of Anesthesia, Critical Care and Pain Medicine, Massachusetts General Hospital, Harvard Medical School, Boston, MA, USA. ²²Department of Medicine, The University of British Columbia, Vancouver, Canada. ²³National Heart, Lung, and Blood Institute, Bethesda, USA. ²⁴Department of Electrical and Computer Engineering, University of Massachusetts Lowell, Lowell, USA. ²⁵University of Mississippi Medical Center, Jackson, MS, USA. ²⁶Westat, Atlanta, USA. ²⁷Population and Preventive Medicine, Program in Public Health, Stony Brook Medicine, Stony Brook, USA. ²⁸Department of Medicine, University of Calgary, Calgary Alberta, Canada. ²⁹Westat, Rockville, USA. ³⁰National Health Research Institute Taiwan, Miaoli City, Taiwan, ROC. ³¹Center for Biomedical and

Translational Informatics, Geisinger Medical Center, Danville, USA. ³²Division of Sleep Medicine, Department of Medicine, University of Pennsylvania, Philadelphia, USA. ³³Division of Pulmonary, Critical Care and Sleep Medicine, Ohio State University, Columbus, USA. ³⁴Department of Internal Medicine, University of Kansas Medical Center, Kansas City, USA. ³⁵Department of Epidemiology, Brown University, Providence, USA. ³⁶Division of Pulmonary, Critical Care and Sleep Medicine, Beth Israel Deaconess Medical Center, Boston, USA. ³⁷School of Medicine, University of Maryland, Baltimore, USA. ³⁸Department of Epidemiology and Environmental Health, University at Buffalo, Buffalo, USA. ³⁹Division of Pulmonary, Allergy and Critical Care Medicine, University of Pittsburgh, Pittsburgh, USA. ⁴⁰Department of Psychiatry and Biobehavioral Sciences, UCLA, Los Angeles, USA. ⁴¹Department of Medicine, University of Alabama Birmingham, Birmingham, AL, USA.