

© 2024 IEEE

2024 IEEE Applied Power Electronics Conference (APEC)

A Gallium Nitride-based 48V-to-1V Point-of-Load (PoL) Converter for Aerospace Telecommunications and Computing Applications

Nathan M. Ellis
Yicheng Zhu
Robert C. N. Pilawa-Podgurski

Personal use of this material is permitted. Permission from IEEE must be obtained for all other uses, in any current or future media, including reprinting/republishing this material for advertising or promotional purposes, creating new collective works, for resale or redistribution to servers or lists, or reuse of any copyrighted component of this work in other works.

A Gallium Nitride-based 48V-to-1V Point-of-Load (PoL) Converter for Aerospace Telecommunications and Computing Applications

Nathan M. Ellis, Yicheng Zhu, Robert C.N. Pilawa-Podgurski

*Dept. of Electrical Engineering and Computer Sciences
University of California, Berkeley, U.S.A.*

Email: nathanmilesellis@berkeley.edu, yczhu@berkeley.edu, pilawa@berkeley.edu

Abstract—This paper presents a regulating Hybrid Switched Capacitor Converter (HSCC) topology suitable for high conversion ratio Point-of-Load (PoL) applications, specifically targeting 48 V to 1 V power delivery in space-based high-performance computing systems, where size and weight are important considerations, along with device de-rating for radiation tolerance. The proposed topology merges an initial 2:1 switched capacitor conversion stage with a recently developed symmetric dual inductor hybrid (SDIH) conversion stage, reaping benefits of both. The SDIH stage offers reduced component count and an excellent switch stress figure of merit, while the initial 2:1 voltage reduction stage significantly reduces the volume of flying capacitors, enabling compact size and low weight. A high density gate drive solution is also presented, using a minimal number of driver ICs without compromising on driving capability. A preliminary hardware prototype demonstrates this topology’s feasibility while employing de-rated gallium nitride (GaN) switches to safeguard against radiation total ionizing dose (TID) and single event effects (SEE). This prototype achieves a very high measured power density of 2,020 W/inch³ (123.3 kW/liter) while performing 48 V to 1 V conversion and switching at 1 MHz.

I. INTRODUCTION

Hybrid switched capacitor converters (HSCCs) have demonstrated high performance in regulating 48 V to point-of-load (PoL) applications (e.g., [1]–[4]), owing to both their reduced total switch stress and required passive component volume [5]–[7]. The reduced switching device voltage stress in these converter topologies makes them particularly applicable to high density and light weight space applications which additionally require immunity to radiation effects such as total ionizing dose (TID) and single event effects (SEE). Here, devices must typically be de-rated well below their terrestrial limits, motivating the use of multi-level and higher order HSCCs [8]. Assisting this effort, gallium nitride (GaN) switching devices offer inherent radiation hardness and peak figures of merit in the tens to hundreds of volts [5], [9]–[11], further motivating the use of GaN-based HSCCs in future spacecraft and satellite power delivery systems. While HSCCs have received significant development for use in terrestrial data centers, this work proposes a direct 48 V to 1 V HSCC topology (Fig. 1) that is also suitable for high performance computing in space. The remainder of this manuscript is organized as follows: Section II describes operation of the proposed topology and motivates its merged two-stage structure.

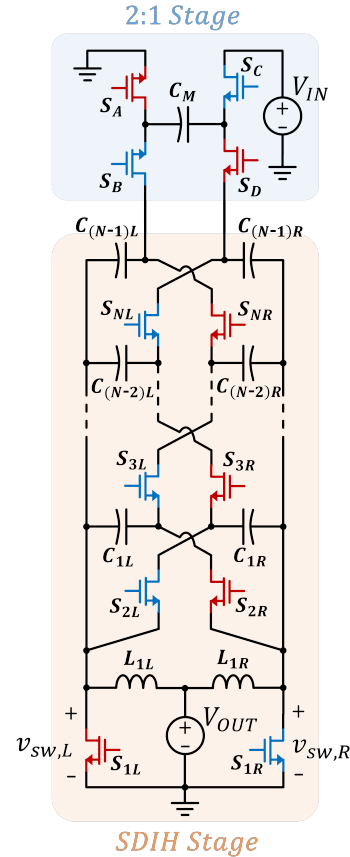


Fig. 1: Proposed power converter topology, comprising an initial 2:1 switched-capacitor stage that is fully soft-charged [12] by a subsequent merged symmetric dual inductor hybrid (SDIH) Dickson-type converter [13].

Section III presents a first hardware prototype validating the proposed structure, in addition to a compact gate drive scheme for practical implementation. Section IV concludes this work.

II. PROPOSED HSCC TOPOLOGY

The proposed HSCC topology depicted in Fig. 1 comprises an initial 2:1 switched capacitor conversion stage which is merged with the recently developed symmetric dual inductor hybrid (SDIH) topology [13]; the latter being a variation on the series capacitor buck (SCB) converter [17] but with far fewer components. This merging of stages is seamlessly facilitated

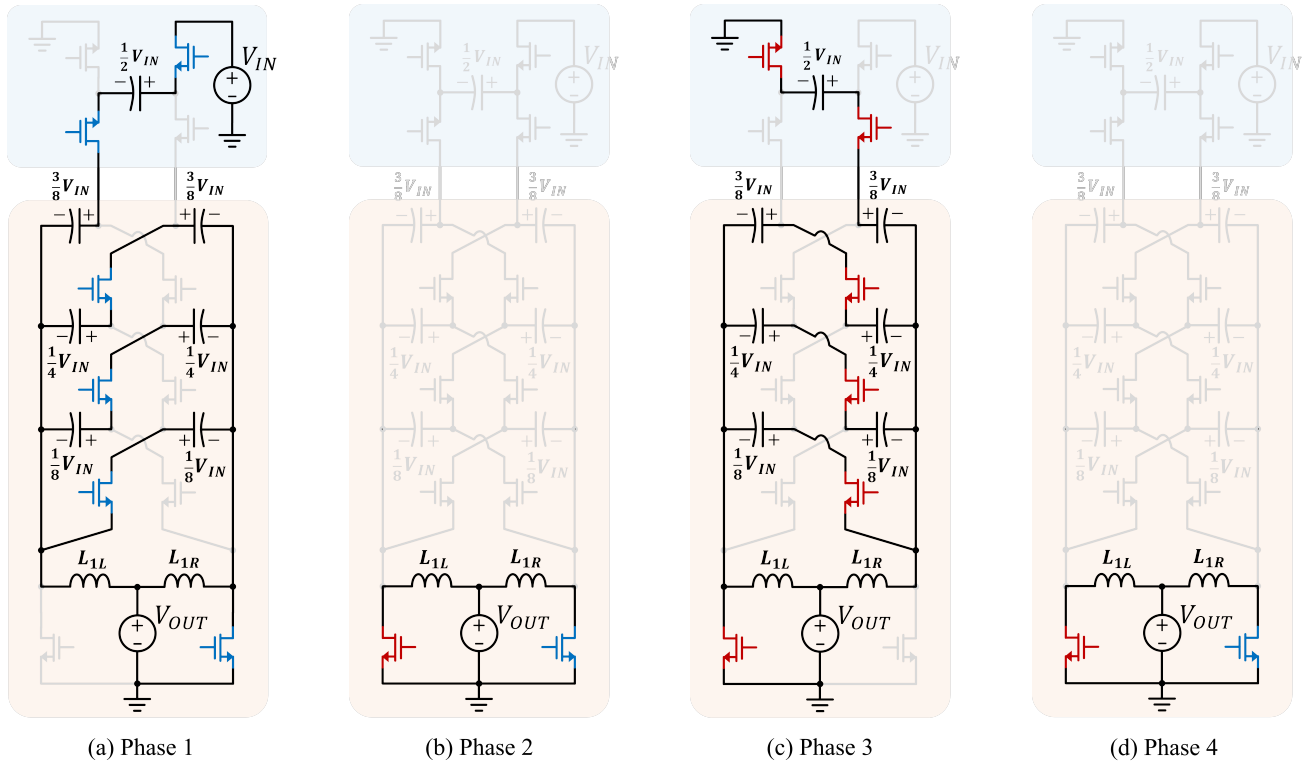


Fig. 2: Simplified phase progression of the proposed topology, using a merged 4th order second-stage SDIH as an example (the hardware prototype discussed in Section III uses an increased 6th order SDIH stage). Primary phases 1 and 3 are interleaved with regulating phases 2 and 4 whose duration may be varied to effect PWM regulation. Switches experience reduced voltage stress and the output inductors are interleaved by 180°, facilitating effective use of coupled inductors for reduced size and improved transient response [14]–[16].

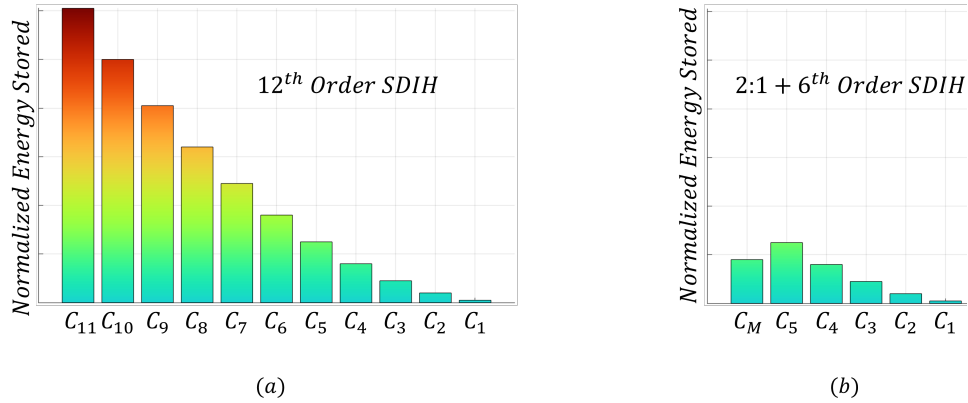


Fig. 3: Comparison of stored flying capacitor energy in two 12:1 switched capacitor solutions. (a) A 12th order single stage SDIH converter [13], (b) the proposed two stage solution leveraging an initial 2:1 reduction followed by a 6th order merged SDIH stage. Capacitor C_X denotes the combined energy stored by both C_{XL} and C_{XR} within the SDIH stage. All capacitors are assumed equal (Farads). Solution (b) provides 7× reduction in required capacitor energy storage.

by the SDIH converter’s inherent dual interleaved high-side port that can draw charge off of the 2:1 stage’s flying capacitor C_M in an alternating fashion — while simultaneously removing two redundant switches. This phase progression is depicted in Fig. 2, where added free-wheeling phases 2 and 4 facilitate phase-shifted-modulation (PWM) voltage regulation. Provided that all flying capacitors are sized equally, this merging of stages has the added benefit of removing all requirements for

split-phase switching¹, with the exception of the lowermost capacitor branch in both phase 1 and phase 3. Alternatively, if capacitor voltage ripple is assumed to be small, split-phase switching may be neglected as is done in Fig. 2 for simplicity.

As a Dickson-type structure [19], the SDIH stage expresses best-in-class switch stress FOM [6], [7], [20], [21], with each switch within the SDIH stage subjected to a maximum

¹Split-phase switching [18] is a more complex clocking scheme that is required by the SDIH topology to ensure complete soft-charging of all flying capacitors. This in turn facilitates increased voltage ripple and reduced passive size. Thus the proposed structure’s simplification is note-worthy.

blocking voltage of V_{IN}/N , where N defines the SDIH order as annotated in Fig. 1. This translates to smaller switches for equivalent performance. Despite this advantage, Dickson converters typically fare worse with respect to passive component volume as compromise. Fig. 3(a) depicts the normalized energy stored in each flying capacitor of an example 12th order SDIH converter, where energy ($\frac{1}{2}CV^2$) is largely proportional to capacitor volume [22]. Here, capacitors C_{11L} and C_{11R} must be rated at $\frac{11}{12} \times V_{IN}$ and store the largest amount of energy, growing with the square of rated voltage.

In contrast, by applying an initial 2:1 stage (proposed), only a subsequent 6th order SDIH stage is required for the same overall conversion ratio, greatly reducing total part count. Moreover, due to the initial halving in voltage, capacitor C_M need only be rated for $\frac{1}{2}V_{IN}$, while capacitors C_{5L} and C_{5R} are rated at $\frac{5}{12}V_{IN}$. This results in a $7\times$ reduction in total capacitor volume (Fig. 3(b)), assuming a continuum of available component ratings. This passive volume reduction comes in exchange for a somewhat worsened overall switch stress, since switches S_A , S_B , S_C and S_D must be rated for an increased voltage of $V_{IN}/2$, however, this compromise has generally been deemed favorable in a growing number of recent practical hardware demonstrations [3], [4], [23]–[28] and is facilitated in this application due to the availability of high performance 100 V GaN devices.

III. HARDWARE PROTOTYPE

A preliminary hardware prototype was constructed on a 0.9mm thick PCB using a 6-layer stackup of 2 oz. copper metalization. Fig. 4 presents a schematic of the primary power stage which includes a 6th order SDIH to produce two interleaved switched node waveforms, $v_{sw,L}$ and $v_{sw,R}$, each with an average amplitude of 4 V ($=48\text{V}/2/6$), as illustrated in the experimentally captured waveforms of Fig. 5. The relative duration of phases 2 and 4 is modulated to provide output voltage regulation to 1 V, irrespective of load. Since the SDIH can operate with a maximum duty cycle of 50% (phases 2 and 4 reducing to zero duration), the maximum average voltage on $v_{sw,X}$ is 2 V, which leads to a symmetric upward and downwards slew rate during transient events; $L \frac{di}{dt} = (2V - 1V)$ and $L \frac{di}{dt} = (0V - 1V)$, respectively. The inherent 180° interleaving of $v_{sw,L}$ and $v_{sw,R}$ effectively accommodates the use of coupled inductors which provide improved ripple cancellation [14]–[16].

Fig. 4 also depicts the primary gate drivers and associated power delivery circuitry. Drivers U_1 , U_2 and U_8 are ground referenced low-side drivers, whereas high-side drivers U_3 , U_4 , U_5 , U_6 and U_7 leverage level-shifting circuitry integrated within a commercial half-bridge driver. Drivers U_3 , U_4 , U_5 , U_6 and U_7 receive power via standard diode-based bootstrapping, also integrated within the chosen driver solution. Since the source of FETs S_{3L} through S_{6L} maintain a constant voltage offset, irrespective of flying capacitor voltage ripple, all may be driven directly by driver U_5 , where capacitive coupling provides the necessary level-shifted V_{gs} signals, and gate-to-source zener diodes ensure correct biasing of the level-shifting

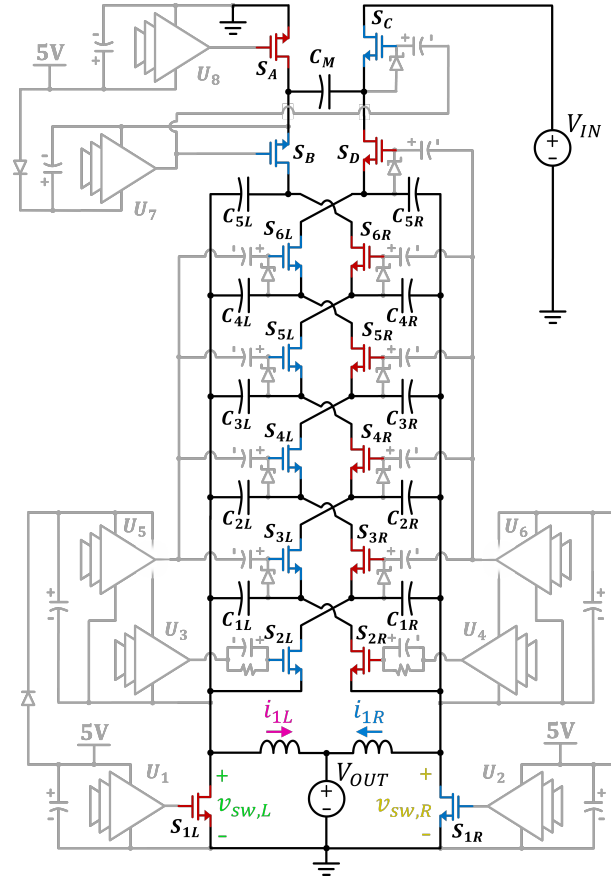


Fig. 4: Schematic of the primary power stage and associated gate driving.

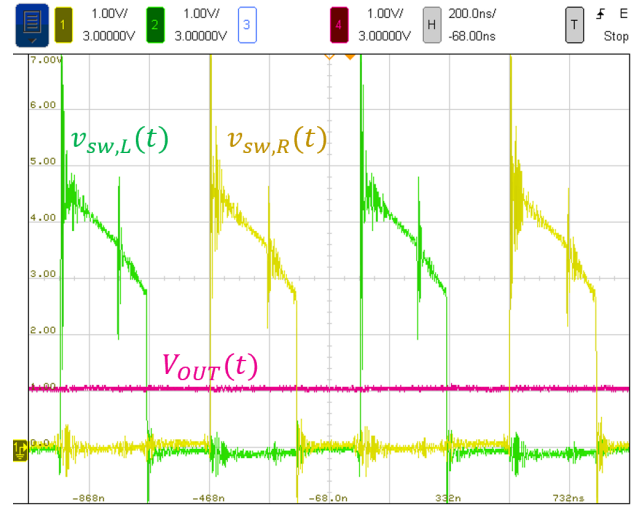
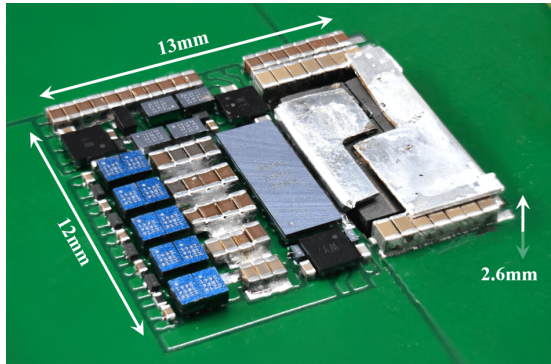


Fig. 5: Measured output and switched node voltages for $V_{IN} = 48\text{V}$, $V_{OUT} = 1\text{V}$, $I_{OUT} = 50\text{A}$, and $f_{sw} = 1\text{MHz}$. Inherent phase-shifted PWM facilitates the effective use of coupled inductors for ripple cancellation and improved transient response.

capacitors. Although U_5 would ideally be referenced to the source of S_{3L} , this would require an additional bootstrapping diode for power delivery. Instead, here U_5 is referenced to the source of S_{2L} (along with U_3); subsequently the load-induced voltage ripple imposed upon the flying capacitors is also imposed upon the V_{gs} gate signals stemming from driver

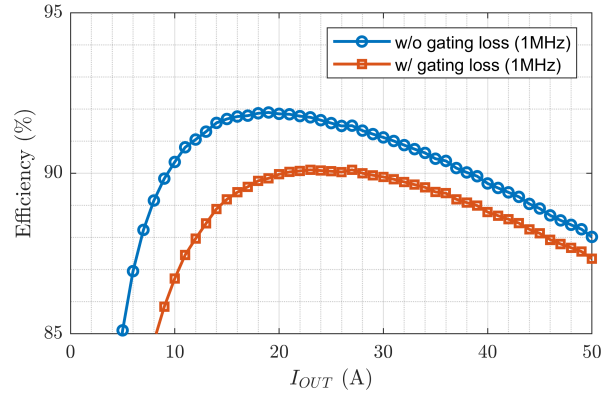
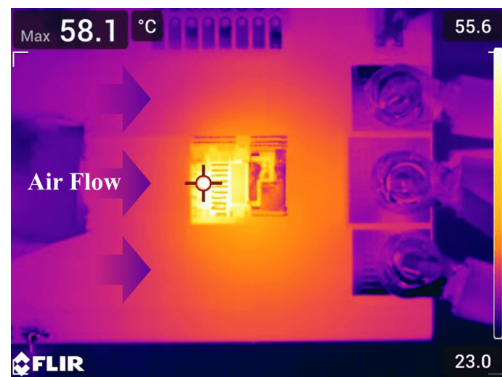
TABLE I: PRIMARY COMPONENT DETAILS

Component	Details	Part Number
$S_{A,B,C,D}$	100 V 23 m Ω	2 \times EPC2070
S_{1-6X}	15 V 26 m Ω	2 \times EPC2216
S_{1X}	40 V 1.1 m Ω	EPC2066
C_{IN}	1 μ F 50 V	42 \times GRM155R61H105ME05D
C_{OUT}	22 μ F 10 V	28 \times GRM158R61A226ME15D
C_M	1.5 μ F (derated)	4 \times GRM155C61E475ME15
$C_{5,L/R}$	1.51 μ F (derated)	3 \times GRM155C61E475ME15 1 \times GRM155R61E225KE11D
$C_{4,L/R}$	1.55 μ F (derated)	1 \times GRM155C61E475ME15 3 \times GRM155R61E225KE11D
$C_{3,L/R}$	1.54 μ F (derated)	3 \times GRM155R61E225KE11D 1 \times GRM155R61E105MA12D
$C_{2,L/R}$	1.57 μ F (derated)	1 \times GRM155R61E225KE11D 1 \times GRM155R61E105MA12D 2 \times GRM155R61A684KE15D
$C_{1,L/R}$	1.53 μ F (derated)	3 \times GRM155R61A684KE15D
U_X	0.7 Ω / 0.4 Ω Source / Sink	uP1966e
Z	5.6 V Zener 0201	GDZ5V6LP3-7
U_{1-4}	0.1 μ F 35 V 0201	GRM033R6YA104ME14D
L_{1L}, L_{1R}	7.5 mm \times 4.5 mm \times 2.3 mm, 2mil air gaps 78 nH (self), 30 nH (mutual)	E-I core ML91S material


Fig. 6: Photograph of the hardware prototype (top side), including a custom single-turn coupled inductor. The PCB's bottom side is similar, due to the converter's symmetry, while also including flying capacitor C_M .

U_5 . However, the 5.6 V zener clamps ensure that V_{gs} -imposed ripple can only cause slight degradation in drive strength ($V_{gs} < 5$ V), and that when low; V_{gs} signals are kept below turn-on threshold V_{TH} , avoiding any false turn-on. A similar capacitor voltage offset strategy is used for driving S_C using U_7 . Gate drivers U_3 and U_4 are used to implement split-phase switching in the SDIH stage [13] and include gate-connected capacitors biased at 0 V for delay matching purposes only.

Table I lists primary component details, while Fig. 6 depicts the top side of the constructed hardware prototype whose total volume is encompassed by a best-fit cuboid measuring 13 mm \times 12 mm \times 2.6 mm, or 405.6 mm³ (0.02475 inch³). Fig. 7 plots measured efficiency curves which achieve peak and full-load efficiencies of 91.9% and 88% when ignoring gate driving losses, and 90.1% and 87.3% when including all losses. Fig. 8 depicts the prototype's thermal behaviour in steady-state operation at full load. For a maximum tested current output of 50 A, and with regulation to 1 V, this prototype achieves a very high measured power density of 2,020 W/inch³ (123.3 kW/liter). Finally, Table II compares this work against other recent competitive 48 V to 1 V demonstrations.


Fig. 7: Measured efficiency versus load current when operating at 1 MHz switching frequency and performing 48 V to 1 V conversion. A peak efficiency of over 90% is recorded when accounting for gate driving losses.

Fig. 8: Thermal photograph when operating at 50 A load current, 48 V to 1 V conversion, and after having reached thermal equilibrium. The hardware prototype reaches a steady 58°C when subject to forced air cooling using a standard 12 V computer fan.

IV. CONCLUSION

This work presents a new HSCC topology applicable to high conversion ratio PoL applications, including 48 V to 1 V power delivery. A high performance SDIH stage is employed for its effective use of switching devices, while an initial 2:1 voltage reduction stage eliminates most of the flying capacitor volume. The availability of high performance GaN devices with inherent radiation hardening makes this topology well suited for use in space applications with increasing compute power. A hardware prototype validates both the topological structure and a compact gate driving scheme which uses 8 gate drivers to drive 16 switches. When performing 48 V to 1 V conversion, this prototype demonstrates a very high power density of 2,020 W/inch³ (123.3 kW/liter) while retaining efficiencies greater than 87%. Future work will discuss transient response, inductor design, and the use of additional assistive circuit techniques for improved performance (e.g., Schottky diodes placed across low-side GaN-FETs).

REFERENCES

- [1] Y. Zhu, J. Zou, and R. Pilawa-Podgurski, "A 1500-A/48-V-to-1-V Switching Bus Converter for Next Generation Ultra-High-Power Microprocessors," in *2024 IEEE Applied Power Electronics Conference and Exposition (APEC)*. IEEE, 2024.

TABLE II: COMPARISON WITH OTHER RECENT 48 V TO 1 V CONVERTER SOLUTIONS

Year	Topology	Switching Frequency	Power Density	Power Stage Efficiency	System Efficiency (including driving losses)
2024	This Work Doublor + SDIH	1 MHz	2,020 W/inch ³ (by box volume)	Peak Efficiency: 91.9%	90.1%
				Full-load Efficiency: 88%	87.3%
2024	20-to-1 SBC [1]	220 kHz	759 W/inch ³ (by box volume)	Peak Efficiency: 94.1%	92.6%
				Full-load Efficiency: 85.9%	85.6%
2023	Mini-LEGO [2]	1515 kHz	1,390 W/inch ³ (by box volume)	Peak Efficiency: 87.1%	84.1%
				Full-load Efficiency: 84.1%	82.3%
2023	MSC [3]	400 kHz	621 W/inch ³ (by box volume)	Peak Efficiency: 93.1%	91.7%
				Full-load Efficiency: 86.2%	85.8%
2023	16-to-1 SBC [4]	150 kHz	464 W/inch ³ (by box volume)	Peak Efficiency: 94.7%	93.4%
				Full-load Efficiency: 86.4%	86.1%

- [2] Y. Elasser, J. Baek, K. Radhakrishnan, H. Gan, J. Douglas, V. De, S. Jiang, H. K. Krishnamurthy, X. Li, C. R. Sullivan *et al.*, "Mini-LEGO: A 1.5-MHz 240-A 48-V-to-1-V CPU VRM with 8.4-mm Height for Vertical Power Delivery," in *2023 IEEE Applied Power Electronics Conference and Exposition (APEC)*. IEEE, 2023, pp. 1959–1966.
- [3] P. Wang, Y. Chen, G. Szczeszynski, S. Allen, D. M. Giuliano, and M. Chen, "MSC-PoL: Hybrid GaN-Si Multistacked Switched Capacitor 48V PwrSIP VRM for Chiplets," *IEEE Transactions on Power Electronics*, 2023.
- [4] Y. Zhu, T. Ge, N. M. Ellis, L. Horowitz, and R. C. Pilawa-Podgurski, "A 500-A/48-to-1-V Switching Bus Converter: A Hybrid Switched-Capacitor Voltage Regulator with 94.7% Peak Efficiency and 464-W/in 3 Power Density," in *2023 IEEE Applied Power Electronics Conference and Exposition (APEC)*. IEEE, 2023, pp. 1989–1996.
- [5] J. T. Stauth, "Pathways to mm-scale DC-DC converters: Trends, opportunities, and limitations," in *2018 IEEE Custom Integrated Circuits Conference (CICC)*. IEEE, 2018, pp. 1–8.
- [6] Z. Ye, S. R. Sanders, and R. C. N. Pilawa-Podgurski, "Modeling and comparison of passive component volume of hybrid resonant switched-capacitor converters," *IEEE Transactions on Power Electronics*, vol. 37, no. 9, pp. 10903–10919, 2022.
- [7] G. Pillonnet, M. Kamell, and P. Mercier, "Normalized Benchmarking of Hybrid Switched-Capacitor DC-DC Converters," in *2023 IEEE 24th Workshop on Control and Modeling for Power Electronics (COMPEL)*. IEEE, 2023, pp. 1–8.
- [8] A. Barchowsky, J. P. Kozak, B. M. Grainger, W. E. Stanchina, and G. F. Reed, "A GaN-based modular multilevel DC-DC converter for high-density anode discharge power modules," in *2017 IEEE Aerospace Conference*. IEEE, 2017, pp. 1–10.
- [9] A. Lidow, A. Nakata, M. Rearwin, J. Strydom, and A. Zafrani, "Single-event and radiation effect on enhancement mode gallium nitride FETs," in *2014 IEEE Radiation Effects Data Workshop (REDW)*. IEEE, 2014, pp. 1–7.
- [10] J. A. Anderson, G. Zulauf, J. W. Kolar, and G. Deboy, "New figure-of-merit combining semiconductor and multi-level converter properties," *IEEE Open Journal of Power Electronics*, vol. 1, pp. 322–338, 2020.
- [11] G. Rohner, J. W. Kolar, D. Bortis, and M. Schweizer, "Optimal Level Number and Performance Evaluation of Si/GaN Multi-Level Flying Capacitor Inverter for Variable Speed Drive Systems," in *2022 25th International Conference on Electrical Machines and Systems (ICEMS)*. IEEE, 2022, pp. 1–6.
- [12] R. Pilawa-Podgurski, D. Giuliano, and D. Perreault, "Merged two-stage power converter architecture with soft charging switched-capacitor energy transfer," in *39th IEEE Power Electronics Specialists Conference*, 2008.
- [13] N. M. Ellis, R. A. Abramson, R. Mahony, and R. C. Pilawa-Podgurski, "The Symmetric Dual Inductor Hybrid (SDIH) Converter for Direct 48V-to-PoL Conversion," *IEEE Transactions on Power Electronics*, 2023.
- [14] P.-L. Wong, P. Xu, P. Yang, and F. C. Lee, "Performance improvements of interleaving VRMs with coupling inductors," *IEEE Transactions on Power Electronics*, vol. 16, no. 4, pp. 499–507, 2001.
- [15] J. Li, C. R. Sullivan, and A. Schultz, "Coupled-inductor design optimization for fast-response low-voltage DC-DC converters," in *APEC Seventeenth Annual IEEE Applied Power Electronics Conference and Exposition (Cat. No. 02CH37335)*, vol. 2. IEEE, 2002, pp. 817–823.
- [16] T. Ge, R. Abramson, Z. Ye, and R. C. Pilawa-Podgurski, "Core Size Scaling Law of Two-Phase Coupled Inductors—Demonstration in a 48-to-1.8 V Hybrid Switched-Capacitor MLB-PoL Converter," in *2022 IEEE Applied Power Electronics Conference and Exposition (APEC)*. IEEE, 2022, pp. 1500–1505.
- [17] K. Nishijima, K. Harada, T. Nakano, T. Nabeshima, and T. Sato, "Analysis of double step-down two-phase buck converter for VRM," in *INTELEC 05-Twenty-Seventh International Telecommunications Conference*. IEEE, 2005, pp. 497–502.
- [18] Y. Lei, R. May, and R. Pilawa-Podgurski, "Split-phase control: Achieving complete soft-charging operation of a dickson switched-capacitor converter," *IEEE Transactions on Power Electronics*, vol. 31, no. 1, pp. 770–782, 2015.
- [19] N. M. Ellis and R. Amirtharajah, "Large Signal Analysis on Variations of the Hybridized Dickson Switched-Capacitor Converter," *IEEE Transactions on Power Electronics*, vol. 37, no. 12, pp. 15005–15019, 2022.
- [20] M. D. Seeman and S. R. Sanders, "Analysis and optimization of switched-capacitor DC-DC converters," *IEEE Transactions on Power Electronics*, vol. 23, no. 2, pp. 841–851, 2008.
- [21] N. M. Ellis, N. C. Brooks, M. E. Blackwell, R. A. Abramson, S. Coday, and R. C. Pilawa-Podgurski, "A General Analysis of Resonant Switched Capacitor Converters Using Peak Energy Storage and Switch Stress Including Ripple," *IEEE Transactions on Power Electronics*, 2023.
- [22] J. Zou, N. C. Brooks, S. Coday, N. M. Ellis, and R. C. Pilawa-Podgurski, "On the size and weight of passive components: Scaling trends for high-density power converter designs," in *2022 IEEE 23rd Workshop on Control and Modeling for Power Electronics (COMPEL)*. IEEE, 2022, pp. 1–7.
- [23] K. Wei, Y. Ramadass, and D. B. Ma, "Direct 12V/24V-to-1V Tri-State Double Step-Down Power Converter With Online V CF Rebalancing and In-Situ Precharge Rate Regulation," *IEEE Journal of Solid-State Circuits*, vol. 56, no. 8, pp. 2416–2426, 2021.
- [24] Z. Xia and J. T. Stauth, "A cascaded hybrid switched-capacitor dc-dc converter capable of fast self startup for usb power delivery," *IEEE Journal of Solid-State Circuits*, vol. 57, no. 6, pp. 1854–1864, 2022.
- [25] T. Ge, Z. Ye, and R. C. Pilawa-Podgurski, "A 48-to-12 V Cascaded Multi-Resonant Switched Capacitor Converter with 4700 W/in 3 Power Density and 98.9% Efficiency," in *2021 IEEE Energy Conversion Congress and Exposition (ECCE)*. IEEE, 2021, pp. 1959–1965.
- [26] M. Halamicek, T. McRae, and A. Prodić, "Cross-coupled series-capacitor quadruple step-down buck converter," in *2020 IEEE Applied Power Electronics Conference and Exposition (APEC)*. IEEE, 2020, pp. 1–6.
- [27] Y. Chen, P. Wang, H. Cheng, G. Szczeszynski, S. Allen, D. M. Giuliano, and M. Chen, "Virtual intermediate bus CPU voltage regulator," *IEEE Transactions on Power Electronics*, vol. 37, no. 6, pp. 6883–6898, 2021.
- [28] Y. Zhu, T. Ge, N. M. Ellis, J. Zou, and R. C. Pilawa-Podgurski, "A 48-V-to-1-V Switching Bus Converter for Ultra-High-Current Applications," in *2023 IEEE 24th Workshop on Control and Modeling for Power Electronics (COMPEL)*. IEEE, 2023, pp. 1–8.