

# UC Berkeley

## UC Berkeley Previously Published Works

### Title

Genomic Analysis Enlightens Agaricales Lifestyle Evolution and Increasing Peroxidase Diversity

### Permalink

<https://escholarship.org/uc/item/4ng3d3cr>

### Journal

Molecular Biology and Evolution, 38(4)

### ISSN

0737-4038

### Authors

Ruiz-Duenas, Francisco J

Barrasa, José M

Sánchez-García, Marisol

et al.

### Publication Date

2021-04-13

### DOI

10.1093/molbev/msaa301

### Copyright Information

This work is made available under the terms of a Creative Commons Attribution License, available at <https://creativecommons.org/licenses/by/4.0/>

Peer reviewed

# Genomic Analysis Enlightens Agaricales Lifestyle Evolution and Increasing Peroxidase Diversity

Francisco J. Ruiz-Dueñas,<sup>\*,1</sup> José M. Barrasa,<sup>\*,2</sup> Marisol Sánchez-García,<sup>†,3</sup> Susana Camarero,<sup>1</sup> Shingo Miyauchi,<sup>‡,4</sup> Ana Serrano,<sup>1</sup> Dolores Linde,<sup>1</sup> Rashid Babiker,<sup>1</sup> Elodie Drula,<sup>5</sup> Iván Ayuso-Fernández,<sup>§,1</sup> Remedios Pacheco,<sup>1</sup> Guillermo Padilla,<sup>1</sup> Patricia Ferreira,<sup>6</sup> Jorge Barriuso,<sup>1</sup> Harald Kellner,<sup>7</sup> Raúl Castanera,<sup>§,8</sup> Manuel Alfaro,<sup>8</sup> Lucía Ramírez,<sup>8</sup> Antonio G. Pisabarro,<sup>8</sup> Robert Riley,<sup>9</sup> Alan Kuo,<sup>9</sup> William Andreopoulos,<sup>9</sup> Kurt LaButti,<sup>9</sup> Jasmyn Pangilinan,<sup>9</sup> Andrew Tritt,<sup>9</sup> Anna Lipzen,<sup>9</sup> Guifen He,<sup>9</sup> Mi Yan,<sup>9</sup> Vivian Ng,<sup>9</sup> Igor V. Grigoriev,<sup>9,10</sup> Daniel Cullen,<sup>11</sup> Francis Martin,<sup>4</sup> Marie-Noëlle Rosso,<sup>12</sup> Bernard Henrissat,<sup>5,13</sup> David Hibbett,<sup>3</sup> and Angel T. Martínez<sup>\*,1</sup>

<sup>1</sup>Centro de Investigaciones Biológicas Margarita Salas (CIB), CSIC, Madrid, Spain

<sup>2</sup>Life Sciences Department, Alcalá University, Alcalá de Henares, Spain

<sup>3</sup>Biology Department, Clark University, Worcester, MA, USA

<sup>4</sup>INRAE, Laboratory of Excellence ARBRE, Champenoux, France

<sup>5</sup>Architecture et Fonction des Macromolécules Biologiques, CNRS/Aix-Marseille University, Marseille, France

<sup>6</sup>Biochemistry and Molecular and Cellular Biology Department and BIFI, Zaragoza University, Zaragoza, Spain

<sup>7</sup>International Institute Zittau, Technische Universität Dresden, Zittau, Germany

<sup>8</sup>Institute for Multidisciplinary Research in Applied Biology, IMAB-UPNA, Pamplona, Spain

<sup>9</sup>US Department of Energy (DOE) Joint Genome Institute (JGI), Lawrence Berkeley National Lab, Berkeley, CA, USA

<sup>10</sup>Department of Plant and Microbial Biology, University of California, Berkeley, Berkeley, CA, USA

<sup>11</sup>Forest Products Laboratory, US Department of Agriculture, Madison, WI, USA

<sup>12</sup>INRAE, Biodiversité et Biotechnologie Fongiques, Aix-Marseille University, Marseille, France

<sup>13</sup>Department of Biological Sciences, King Abdulaziz University, Jeddah, Saudi Arabia

<sup>†</sup>Present address: Uppsala Biocentre, Swedish University of Agricultural Sciences, Uppsala, Sweden

<sup>‡</sup>Present address: Max Planck Institute for Plant Breeding Research, Köln, Germany

<sup>§</sup>Present address: Norwegian University of Life Sciences (NMBU), Ås, Norway

<sup>¶</sup>Present address: Centre for Research in Agricultural Genomics, CSIC-IRTA-UAB-UB, Barcelona, Spain

\*Corresponding authors: E-mails: fjrui@ cib.csic.es; josembarrasa.61@gmail.com; atmartinez@cib.csic.es.

Associate editor Julian Echave

## Abstract

As actors of global carbon cycle, Agaricomycetes (Basidiomycota) have developed complex enzymatic machineries that allow them to decompose all plant polymers, including lignin. Among them, saprotrophic Agaricales are characterized by an unparalleled diversity of habitats and lifestyles. Comparative analysis of 52 Agaricomycetes genomes (14 of them sequenced de novo) reveals that Agaricales possess a large diversity of hydrolytic and oxidative enzymes for lignocellulose decay. Based on the gene families with the predicted highest evolutionary rates—namely cellulose-binding CBM1, glycoside hydrolase GH43, lytic polysaccharide monoxygenase AA9, class-II peroxidases, glucose-methanol-choline oxidase/dehydrogenases, laccases, and unspecific peroxygenases—we reconstructed the lifestyles of the ancestors that led to the extant lignocellulose-decomposing Agaricomycetes. The changes in the enzymatic toolkit of ancestral Agaricales are correlated with the evolution of their ability to grow not only on wood but also on leaf litter and decayed wood, with grass-litter decomposers as the most recent eco-physiological group. In this context, the above families were analyzed in detail in connection with lifestyle diversity. Peroxidases appear as a central component of the enzymatic toolkit of saprotrophic Agaricomycetes, consistent with their essential role in lignin degradation and high evolutionary rates. This includes not only expansions/losses in peroxidase genes common to other basidiomycetes but also the widespread presence in Agaricales (and Russulales) of new peroxidases types not found in wood-rotting Polyporales, and other Agaricomycetes orders. Therefore, we analyzed the peroxidase evolution in Agaricomycetes by ancestral-sequence reconstruction revealing several major evolutionary pathways and mapped the appearance of the different enzyme types in a time-calibrated species tree.

**Key words:** Agaricales, lifestyle evolution, lignocellulose decay, plant cell-wall degrading enzymes, ligninolytic peroxidases, ancestral-sequence reconstruction.

© The Author(s) 2020. Published by Oxford University Press on behalf of the Society for Molecular Biology and Evolution.

This is an Open Access article distributed under the terms of the Creative Commons Attribution License (<http://creativecommons.org/licenses/by/4.0/>), which permits unrestricted reuse, distribution, and reproduction in any medium, provided the original work is properly cited.

Open Access

## Introduction

Large amounts of organic carbon reside in soil (~700 Gt in the upper 30 cm) (Batjes 2014) and plant biomass (~455 Gt, with ~300 Gt in cell-wall polymers) (Bar-On et al. 2018). Saprotrophic fungi colonizing soil and dead plant biomass play a crucial role in the global carbon cycle. Among them, basidiomycetes of the class Agaricomycetes include most wood-colonizing, soil-inhabiting, and litter-decomposing species in forests and grasslands (Lundell et al. 2014). Cellulose, hemicelluloses, and lignin are the main cell-wall components in vascular plants. Lignin protects cellulose and hemicelluloses, being highly recalcitrant toward degradation due to its aromatic nature and heterogeneous structure (Ralph et al. 2004). Therefore, lignin breakdown represents a critical step for both carbon cycling in terrestrial ecosystems and biomass utilization in lignocellulose biorefineries (Martínez et al. 2009). Wood-colonizing Agaricomycetes have developed two main strategies that allow them to overcome the recalcitrance of the lignin polymer. Typical white-rot fungi can depolymerize (and mineralize) lignin, providing access to cellulose and hemicelluloses, whereas brown-rot fungi are able to degrade wood polysaccharides with only a partial modification of lignin (Martínez et al. 2005, 2011), together with several Agaricomycetes causing undefined weak wood decay (Riley et al. 2014; Floudas et al. 2015). On the other hand, although soft rot is typically caused by fungi of the phylum Ascomycota, and their asexual states, characterized by forming cavity chains inside the secondary wall of wood (Daniel and Nilsson 1998), soft-rot-like decay has been reported for some white-rot Agaricomycetes forming the above characteristic cavities (Daniel et al. 1992; Martínez et al. 2005; Schwarze 2007; Sahu et al. 2020).

Comparative genomics has contributed to our understanding of white-rot and brown-rot decay mechanisms through evolutionary analyses of the enzyme families involved, most of them classified in the CAZy database ([www.cazy.org](http://www.cazy.org); last accessed November 17, 2020) (Lombard et al. 2014). White rot has been related with the appearance of genes encoding ligninolytic class-II peroxidases (POD, CAZy AA2) in the Late Carboniferous, and subsequent duplication events (Floudas et al. 2012; Ruiz-Dueñas et al. 2013). The evolution of POD enzymes, with changes in their catalytic and other relevant properties, would parallel the evolution of lignin complexity in plants, as recently proposed by resurrection of ancestral Polyporales enzymes (Ayuso-Fernández et al. 2019). Unlike white-rot, brown-rot fungi have repeatedly appeared from white-rot ancestors through a process of contraction of genes involved in plant cell-wall degradation with loss of ligninolytic PODs. Among Agaricomycetes, those of the order Polyporales include most wood rotters and, after sequencing the first white-rot (Martínez et al. 2004) and brown-rot (Martínez et al. 2009) fungal genomes, more than seventy species of this order have been characterized at multiomic level (see Vanden Wymelenberg et al. 2009; Eastwood et al. 2011; Fernández-Fueyo et al. 2012; Floudas et al. 2012; Binder et al. 2013; Ruiz-Dueñas et al. 2013;

Miyauchi et al. 2018, 2020; Oghenekaro et al. 2020, among others). In contrast to the state of knowledge on Polyporales, less is known about lignocellulose-degradation mechanisms in Agaricales, the largest order of Agaricomycetes (with ~13,000 described species), despite their broader variety of substrates, from sound wood and decayed wood to soil. Nevertheless, some omic analyses have anticipated differences in the gene presence and expression in Agaricales with different ecologies (Morin et al. 2012; Bao et al. 2013; Sahu et al. 2020). Such differences would represent an adaptation of the so-called plant cell-wall degrading enzymes (PCWDE) (Kohler et al. 2015)—a repertoire of hydrolases, oxidoreductases, and other enzymes—to the variety of substrates that these fungi colonize in nature.

Hydrolytic enzymes, including glycoside hydrolases and carbohydrate esterases together with polysaccharide lyases, are responsible for: 1) polysaccharide depolymerization, 2) cleavage of bonds between hemicellulose polymers and between hemicelluloses and lignin, and 3) cutin/suberin depolymerization. Likewise, oxidoreductases are involved in both lignin and polysaccharide degradation. The latter includes the more recently discovered copper-containing lytic polysaccharide monooxygenases (LPMO, CAZy AA9-AA11 and AA13-AA16) acting on crystalline cellulose and xylan (Quinlan et al. 2011; Couturier et al. 2018; Filiatrault-Chastel et al. 2019). On the other hand, heme-containing PODs, and eventually heme-thiolate peroxidases/peroxygenases (HTP) and heme dye-decolorizing peroxidases (DyP), together with laccases of the multicopper-oxidase (MCO, CAZy AA1) superfamily, are responsible for lignin degradation acting synergistically with auxiliary oxidoreductases (Martínez et al. 2018). These auxiliary enzymes include the glucose-methanol-choline oxidase/dehydrogenase (GMC, CAZy AA3) superfamily and the copper-radical oxidase (CRO, CAZy AA5) family that provide the H<sub>2</sub>O<sub>2</sub> required by peroxidases and Fenton-type reactions.

With the aim of shedding light on the evolution of lignocellulose-decaying lifestyles in Agaricales, we analyze here 52 fungal genomes of this and related orders (including 14 new sequenced genomes) focusing on the evolution of the PCWDE repertoires. We aim to correlate different saprotrophic lifestyles (such as white-rot and brown-rot wood decay, forest-litter and grass-litter degradation, and decayed-wood degradation) with different enzymatic machineries. This information would enable us to predict the ecologies of ancestors in the different Agaricomycetes orders. Relevant enzymes with a high evolutionary rate will be examined, and the ancestry of ligninolytic PODs analyzed in detail, given their key contribution to lignocellulose decay including new enzyme types.

## Results and Discussion

### Sequenced Genomes

The interest for sequencing saprotrophic Agaricales is relatively recent compared with the interest on mycorrhizal Agaricales (Martin et al. 2008) and saprotrophic Polyporales genomes (Floudas et al. 2012), the exception being

Species	Ecology	Lifestyle	CAZymes (GH, PL and CE)														Oxidoreductases														TOTAL #																																																																																																																																																																																																																																																																																																																																																																																																																																																																																																																																																																																																																																																																																																																																																																																																																																																																																																																																																																																																																																																																																																																																																																																																																																																																																																																																															
			GH1	GH2	GH3	GH4	GH5	GH6	GH7	GH8	GH9	GH10	GH11	GH12	GH13	GH14	GH15	GH16	GH17	GH18	GH19	GH20	GH21	GH22	GH23	GH24	GH25	GH26	GH27	GH28		GH29	GH30	GH31	GH32	GH33	GH34	GH35	GH36	GH37	GH38	GH39	GH40	GH41	GH42	GH43	GH44	GH45	GH46	GH47	GH48	GH49	GH50	GH51	GH52	GH53	GH54	GH55	GH56	GH57	GH58	GH59	GH60	GH61	GH62	GH63	GH64	GH65	GH66	GH67	GH68	GH69	GH70	GH71	GH72	GH73	GH74	GH75	GH76	GH77	GH78	GH79	GH80	GH81	GH82	GH83	GH84	GH85	GH86	GH87	GH88	GH89	GH90	GH91	GH92	GH93	GH94	GH95	GH96	GH97	GH98	GH99	GH100	GH101	GH102	GH103	GH104	GH105	GH106	GH107	GH108	GH109	GH110	GH111	GH112	GH113	GH114	GH115	GH116	GH117	GH118	GH119	GH120	GH121	GH122	GH123	GH124	GH125	GH126	GH127	GH128	GH129	GH130	GH131	GH132	GH133	GH134	GH135	GH136	GH137	GH138	GH139	GH140	GH141	GH142	GH143	GH144	GH145	GH146	GH147	GH148	GH149	GH150	GH151	GH152	GH153	GH154	GH155	GH156	GH157	GH158	GH159	GH160	GH161	GH162	GH163	GH164	GH165	GH166	GH167	GH168	GH169	GH170	GH171	GH172	GH173	GH174	GH175	GH176	GH177	GH178	GH179	GH180	GH181	GH182	GH183	GH184	GH185	GH186	GH187	GH188	GH189	GH190	GH191	GH192	GH193	GH194	GH195	GH196	GH197	GH198	GH199	GH200	GH201	GH202	GH203	GH204	GH205	GH206	GH207	GH208	GH209	GH210	GH211	GH212	GH213	GH214	GH215	GH216	GH217	GH218	GH219	GH220	GH221	GH222	GH223	GH224	GH225	GH226	GH227	GH228	GH229	GH230	GH231	GH232	GH233	GH234	GH235	GH236	GH237	GH238	GH239	GH240	GH241	GH242	GH243	GH244	GH245	GH246	GH247	GH248	GH249	GH250	GH251	GH252	GH253	GH254	GH255	GH256	GH257	GH258	GH259	GH260	GH261	GH262	GH263	GH264	GH265	GH266	GH267	GH268	GH269	GH270	GH271	GH272	GH273	GH274	GH275	GH276	GH277	GH278	GH279	GH280	GH281	GH282	GH283	GH284	GH285	GH286	GH287	GH288	GH289	GH290	GH291	GH292	GH293	GH294	GH295	GH296	GH297	GH298	GH299	GH300	GH301	GH302	GH303	GH304	GH305	GH306	GH307	GH308	GH309	GH310	GH311	GH312	GH313	GH314	GH315	GH316	GH317	GH318	GH319	GH320	GH321	GH322	GH323	GH324	GH325	GH326	GH327	GH328	GH329	GH330	GH331	GH332	GH333	GH334	GH335	GH336	GH337	GH338	GH339	GH340	GH341	GH342	GH343	GH344	GH345	GH346	GH347	GH348	GH349	GH350	GH351	GH352	GH353	GH354	GH355	GH356	GH357	GH358	GH359	GH360	GH361	GH362	GH363	GH364	GH365	GH366	GH367	GH368	GH369	GH370	GH371	GH372	GH373	GH374	GH375	GH376	GH377	GH378	GH379	GH380	GH381	GH382	GH383	GH384	GH385	GH386	GH387	GH388	GH389	GH390	GH391	GH392	GH393	GH394	GH395	GH396	GH397	GH398	GH399	GH400	GH401	GH402	GH403	GH404	GH405	GH406	GH407	GH408	GH409	GH410	GH411	GH412	GH413	GH414	GH415	GH416	GH417	GH418	GH419	GH420	GH421	GH422	GH423	GH424	GH425	GH426	GH427	GH428	GH429	GH430	GH431	GH432	GH433	GH434	GH435	GH436	GH437	GH438	GH439	GH440	GH441	GH442	GH443	GH444	GH445	GH446	GH447	GH448	GH449	GH450	GH451	GH452	GH453	GH454	GH455	GH456	GH457	GH458	GH459	GH460	GH461	GH462	GH463	GH464	GH465	GH466	GH467	GH468	GH469	GH470	GH471	GH472	GH473	GH474	GH475	GH476	GH477	GH478	GH479	GH480	GH481	GH482	GH483	GH484	GH485	GH486	GH487	GH488	GH489	GH490	GH491	GH492	GH493	GH494	GH495	GH496	GH497	GH498	GH499	GH500	GH501	GH502	GH503	GH504	GH505	GH506	GH507	GH508	GH509	GH510	GH511	GH512	GH513	GH514	GH515	GH516	GH517	GH518	GH519	GH520	GH521	GH522	GH523	GH524	GH525	GH526	GH527	GH528	GH529	GH530	GH531	GH532	GH533	GH534	GH535	GH536	GH537	GH538	GH539	GH540	GH541	GH542	GH543	GH544	GH545	GH546	GH547	GH548	GH549	GH550	GH551	GH552	GH553	GH554	GH555	GH556	GH557	GH558	GH559	GH560	GH561	GH562	GH563	GH564	GH565	GH566	GH567	GH568	GH569	GH570	GH571	GH572	GH573	GH574	GH575	GH576	GH577	GH578	GH579	GH580	GH581	GH582	GH583	GH584	GH585	GH586	GH587	GH588	GH589	GH590	GH591	GH592	GH593	GH594	GH595	GH596	GH597	GH598	GH599	GH600	GH601	GH602	GH603	GH604	GH605	GH606	GH607	GH608	GH609	GH610	GH611	GH612	GH613	GH614	GH615	GH616	GH617	GH618	GH619	GH620	GH621	GH622	GH623	GH624	GH625	GH626	GH627	GH628	GH629	GH630	GH631	GH632	GH633	GH634	GH635	GH636	GH637	GH638	GH639	GH640	GH641	GH642	GH643	GH644	GH645	GH646	GH647	GH648	GH649	GH650	GH651	GH652	GH653	GH654	GH655	GH656	GH657	GH658	GH659	GH660	GH661	GH662	GH663	GH664	GH665	GH666	GH667	GH668	GH669	GH670	GH671	GH672	GH673	GH674	GH675	GH676	GH677	GH678	GH679	GH680	GH681	GH682	GH683	GH684	GH685	GH686	GH687	GH688	GH689	GH690	GH691	GH692	GH693	GH694	GH695	GH696	GH697	GH698	GH699	GH700	GH701	GH702	GH703	GH704	GH705	GH706	GH707	GH708	GH709	GH710	GH711	GH712	GH713	GH714	GH715	GH716	GH717	GH718	GH719	GH720	GH721	GH722	GH723	GH724	GH725	GH726	GH727	GH728	GH729	GH730	GH731	GH732	GH733	GH734	GH735	GH736	GH737	GH738	GH739	GH740	GH741	GH742	GH743	GH744	GH745	GH746	GH747	GH748	GH749	GH750	GH751	GH752	GH753	GH754	GH755	GH756	GH757	GH758	GH759	GH760	GH761	GH762	GH763	GH764	GH765	GH766	GH767	GH768	GH769	GH770	GH771	GH772	GH773	GH774	GH775	GH776	GH777	GH778	GH779	GH780	GH781	GH782	GH783	GH784	GH785	GH786	GH787	GH788	GH789	GH790	GH791	GH792	GH793	GH794	GH795	GH796	GH797	GH798	GH799	GH800	GH801	GH802	GH803	GH804	GH805	GH806	GH807	GH808	GH809	GH810	GH811	GH812	GH813	GH814	GH815	GH816	GH817	GH818	GH819	GH820	GH821	GH822	GH823	GH824	GH825	GH826	GH827	GH828	GH829	GH830	GH831	GH832	GH833	GH834	GH835	GH836	GH837	GH838	GH839	GH840	GH841	GH842	GH843	GH844	GH845	GH846	GH847	GH848	GH849	GH850	GH851	GH852	GH853	GH854	GH855	GH856	GH857	GH858	GH859	GH860	GH861	GH862	GH863	GH864	GH865	GH866	GH867	GH868	GH869	GH870	GH871	GH872	GH873	GH874	GH875	GH876	GH877	GH878	GH879	GH880	GH881	GH882	GH883	GH884	GH885	GH886	GH887	GH888	GH889	GH890	GH891	GH892	GH893	GH894	GH895	GH896	GH897	GH898	GH899	GH900	GH901	GH902	GH903	GH904	GH905	GH906	GH907	GH908	GH909	GH910	GH911	GH912	GH913	GH914	GH915	GH916	GH917	GH918	GH919	GH920	GH921	GH922	GH923	GH924	GH925	GH926	GH927	GH928	GH929	GH930	GH931	GH932	GH933	GH934	GH935	GH936	GH937	GH938	GH939	GH940	GH941	GH942	GH943	GH944	GH945	GH946	GH947	GH948	GH949	GH950	GH951	GH952	GH953	GH954	GH955	GH956	GH957	GH958	GH959	GH960	GH961	GH962	GH963	GH964	GH965	GH966	GH967	GH968	GH969	GH970	GH971	GH972	GH973	GH974	GH975	GH976	GH977	GH978	GH979	GH980	GH981	GH982	GH983	GH984	GH985	GH986	GH987	GH988	GH989	GH990	GH991	GH992	GH993	GH994	GH995	GH996	GH997	GH998	GH999	GH1000	GH1001	GH1002	GH1003	GH1004	GH1005	GH1006	GH1007	GH1008	GH1009	GH1010	GH1011	GH1012	GH1013	GH1014	GH1015	GH1016	GH1017	GH1018	GH1019	GH1020	GH1021	GH1022	GH1023	GH1024	GH1025	GH1026	GH1027	GH1028	GH1029	GH1030	GH1031	GH1032	GH1033	GH1034	GH1035	GH1036	GH1037	GH1038	GH1039	GH1040	GH1041	GH1042	GH1043	GH1044	GH1045	GH1046	GH1047	GH1048	GH1049	GH1050	GH1051	GH1052	GH1053	GH1054	GH1055	GH1056	GH1057	GH1058	GH1059	GH1060	GH1061	GH1062	GH1063	GH1064	GH1065	GH1066	GH1067	GH1068	GH1069	GH1070	GH1071	GH1072	GH1073	GH1074	GH1075	GH1076	GH1077	GH1078	GH1079	GH1080	GH1081	GH1082	GH1083	GH1084	GH1085	GH1086	GH1087	GH1088	GH1089	GH1090	GH1091	GH1092	GH1093	GH1094	GH1095	GH1096	GH1097	GH1098	GH1099	GH1100	GH1101	GH1102	GH1103	GH1104	GH1105	GH1106	GH1107	GH1108	GH1109	GH1110	GH1111	GH1112	GH1113	GH1114	GH1115	GH1116	GH1117	GH1118	GH1119	GH1120	GH1121	GH1122	GH1123	GH1124	GH1125	GH1126	GH1127	GH1128	GH1129	GH1130	GH1131	GH1132	GH1133	GH1134	GH1135	GH1136	GH1137	GH1138	GH1139	GH1140	GH1141	GH1142	GH1143	GH1144	GH1145	GH1146	GH1147	GH1148	GH1149	GH1150	GH1151	GH1152	GH1153	GH1154	GH1155	GH1156	GH1157	GH1158	GH1159	GH1160	GH1161	GH1162	GH1163	GH1164	GH1165	GH1166	GH1167	GH1168	GH1169	GH1170	GH1171	GH1172	GH1173	GH1174	GH1175	GH1176	GH1177	GH1178	GH1179	GH1180	GH1181	GH1182	GH1183	GH1184	GH1185	GH1186	GH1187	GH1188	GH1189	GH1190	GH1191	GH1192	GH1193	GH1194	GH1195	GH1196	GH1197	GH1198	GH1199	GH1200	GH1201	GH1202	GH1203	GH1204	GH1205	GH1206	GH1207	GH1208	GH1209	GH1210	GH1211	GH1212	GH1213	GH1214	GH1215	GH1216	GH1217	GH1218	GH1219	GH1220	GH1221	GH1222	GH1223	GH1224	GH1225	GH1226	GH1227	GH1228	GH1229	GH1230	GH1231	GH1232	GH1233	GH1234	GH1235	GH1236	GH1237	GH1238	GH1239	GH1240	GH1241	GH1242	GH1243	GH1244	GH1245	GH1246	GH1247	GH1248	GH1249	GH1250	GH1251	GH1252	GH1253	GH1254	GH1255	GH1256	GH1257	GH1258	GH1259	GH1260	GH1261	GH1262	GH1263	GH1264	GH1265	GH1266	GH1267	GH1268	GH1269	GH1270	GH1271	GH1272	GH1273	GH1274	GH1275	GH1276	GH1277	GH1278	GH1279	GH1280	GH1281	GH1282	GH1283	GH1284	GH1285	GH1286	GH1287	GH1288	GH1289	GH1290	GH1291	GH1292	GH1293	GH1294	GH1295	GH1296	GH1297	GH1298	GH1299	GH1300	GH1301	GH1302	GH1303	GH1304	GH1305	GH1306	GH1307	GH1308	GH1309	GH1310	GH1311	GH1312	GH1313	GH1314	GH1315	GH1316	GH1317	GH1318	GH1319	GH1320	GH1321	GH1322	GH1323

*Coprinopsis cinerea* as a model for morphogenetic studies (Stajich et al. 2010) and *Agaricus bisporus* as a model edible mushroom (Morin et al. 2012). Therefore, a number of Agaricales genomes have been sequenced in the frame of two JGI projects, and the results are analyzed here, together with previously available genomes from additional Agaricales and a selection of Agaricomycetes, up to a total of 52 species (fig. 1). Information on fungal strains, genome sequencing, assembly, and annotation is provided in supplementary sections I1–I3 (including tables S1–S4), Supplementary Material online.

High-quality-annotated genome assemblies were obtained for the 14 de novo sequenced species, with BUSCO completeness scores (ranging from 92.9% to 98.9%, supplementary table S3, Supplementary Material online) similar to those of other fungal genomes included in this study (Miyachi et al. 2020). These 14 species cover the saprotrophic lifestyles in Agaricales according to the type of lignocellulosic substrate they preferentially, although not exclusively, degrade in nature. Among them, *Clitocybe gibba*, *Lepista nuda*, *Macrolepiota fuliginosa*, *Pholiota conissans*, and *Rhodocollybia butyracea* are forest-litter decomposers. *Pleurotus eryngii*, *Agrocybe pediades*, and *Panaeolus papilionaceus* are grassland-litter decomposers (the latter species as a late dung colonizer). *Crepidotus variabilis* grows on forest wood debris producing an uncharacterized degradation, whereas *Hymenopellis radicata*, *Pholiota alnicola*, *Cyathus striatus*, and *Gymnopilus junonius* grow on wood at advanced stages of decomposition (decayed-wood degraders). Finally, *Oudemansiella mucida* produces white-rot decay of wood, but soft-rot-like decay has also been reported (Daniel et al. 1992; Sahu et al. 2020). The 38 additional Agaricomycetes include 19 Agaricales and 19 Polyporales, Boletales, Russulales, Amylocorticiales, and Atheliales species, with saprotrophic and biotrophic lifestyles. Comparison of the species from the orders analyzed revealed higher lifestyle diversity in Agaricales (33 species with nine lifestyles in fig. 1) than in Polyporales (ten species with only white-rot and brown-rot lifestyles), with very different diversity-index values (calculated with the same algorithm used below for estimation of enzyme diversity), in agreement with the characteristic wood habitat of the latter fungi reported in literature (whereas no conclusive comparison with Boletales and Russulales could be established at this stage).

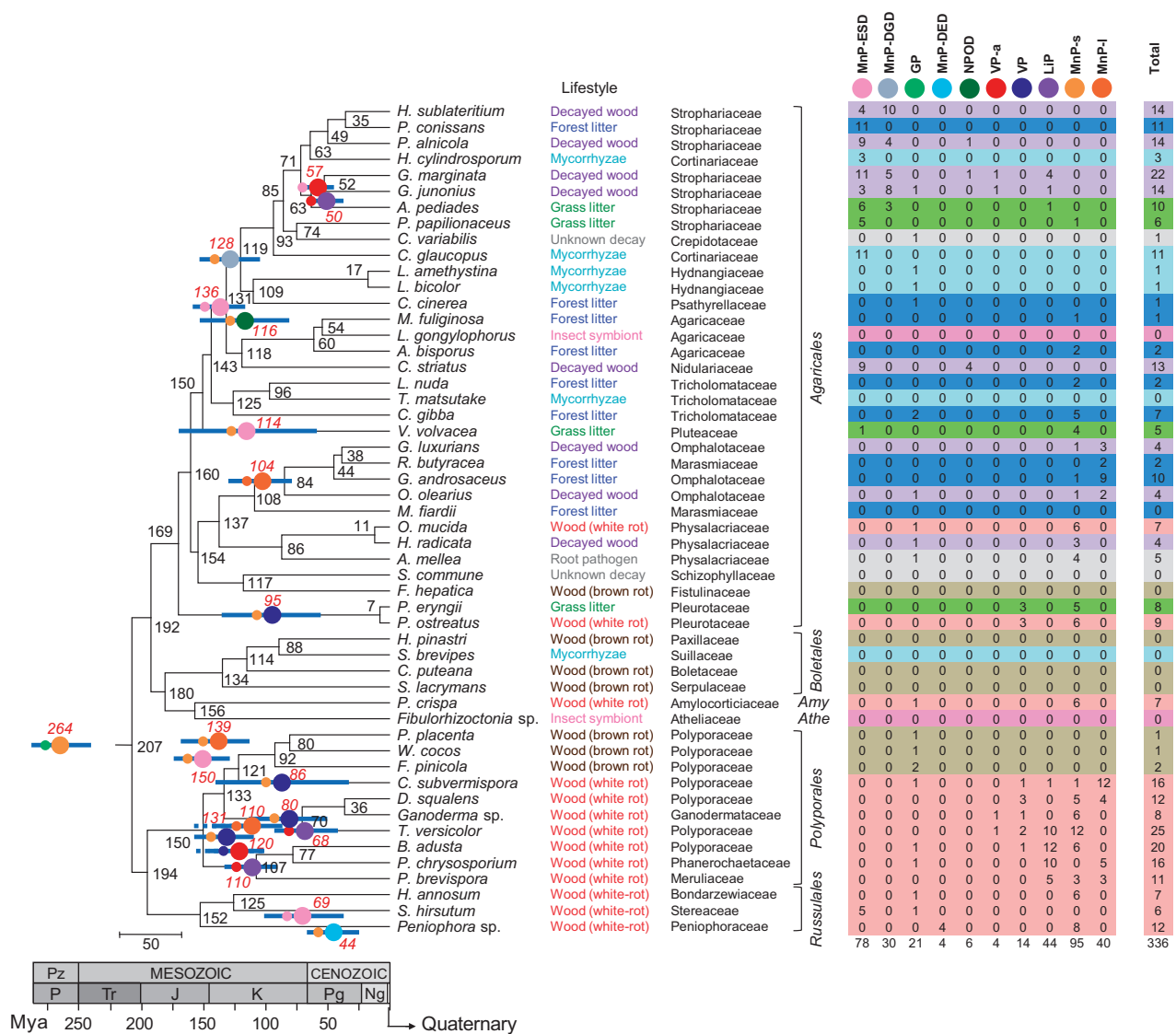
The 33 Agaricales genomes range in size from ~28 to 175 Mb (supplementary figs. S1, left, and S2A, Supplementary Material online) due to the high content of transposable elements in some species (representing 66% and 63% of the *Leucoagaricus gongylophorus* and *Tricholoma matsutake* genomes, respectively) (supplementary fig. S7B, Supplementary Material online). Analysis of these repetitive sequences (supplementary section I8, including figs. S6–S9 and table S6; and data sets S1 and S2, Supplementary Material online) revealed that they had evolved independently of phylogenetic and lifestyle constraints. Noteworthy differences are also observed in the content of predicted genes in the Agaricales (between 5,000 and 29,000 genes, supplementary figs. S1, right, and S2B, Supplementary

Material online). Despite these differences, phylogenetic analysis of variance (ANOVA) revealed that gene content and genome size are not significantly correlated to the broader ecology (lifestyles) in this order. Likewise, it was found that the differences do not respond to wide phylogenetic patterns, since they are not significant among the different orders analyzed.

### Phylogenetic Analysis and Molecular Dating

The evolutionary relationships between the 52 sequenced species were shown in a maximum-likelihood (ML) phylogenetic tree (fig. 2, left). The super-matrix used consisted of 25,699 sites from concatenated alignments of single-copy orthologous genes. The tree was time-calibrated using a penalized likelihood algorithm, with secondary calibration using dates for the origin of fungal clades provided by Varga et al. (2019). The resulting dated phylogeny, which recovered the six Agaricomycetes orders as monophyletic, is in good agreement with two recent megaphylogenies that include more than 1,000 (Krah et al. 2018) and 5,000 (Varga et al. 2019) Agaricomycetes, although our divergence dates are somewhat higher. Thus, the appearance of the most recent common ancestor (MRCA) of the Agaricomycetidae (including Agaricales, Boletales, Amylocorticiales, and Atheliales) was dated 192 million years ago (Ma), to the early Jurassic. Those of Agaricales (169 Ma), Polyporales (150 Ma), and Russulales (152 Ma) were also placed within this geological period, and the MRCA of Boletales (134 Ma) in the Early Cretaceous. The subsequent diversification and speciation has been reported to be especially accelerated in Agaricales (Varga et al. 2019).

Our time-calibrated organismal phylogeny shows the evolution of the main lignocellulose-degrading Agaricomycetes groups in the last 200 My. This class also includes biotrophic species derived from an ancestral white-rot saprotroph, as it would be the case of the mycorrhizal fungi and the root pathogen *Armillaria* species included in the present study (Floudas et al. 2012; Kohler et al. 2015; Nagy, Riley, Tritt, et al. 2016; Sipos et al. 2017; Sahu et al. 2020). The evolution maintained wood degradation (white rot and brown rot) widely represented in Polyporales, Russulales, Amylocorticiales, and Boletales. Moreover, new lifestyle evolution was common in Agaricales, with high diversity of lignocellulose-decaying lifestyles even at family level (fig. 2). Thus, in the Pleurotaceae family, *P. eryngii* and *Pleurotus ostreatus*, which in our phylogeny separated only 7 Ma, exhibit very different lignocellulose-decaying lifestyles (grassland litter and wood decay, respectively). Likewise, grass-litter (*A. pediades* and *P. papilionaceus*), forest-litter (*P. conissans*), and decayed-wood (*Hypholoma sublateritium*, *P. alnicola*, *Galerina marginata*, and *G. junonius*) degraders are found in the Strophariaceae family, which arose 85 Ma; and decayed-wood (*Hymenopellis radicata*) and wood (*O. mucida*) decomposers, together with root pathogen *Armillaria mellea*, are identified in the Physalacriaceae family, which also arose in the upper Cretaceous (86 Ma). In the latter family, white-rot decay by *O. mucida*, *A. mellea*, and other *Armillaria* species (the latter in the saprotrophic phase of their lifecycle) has



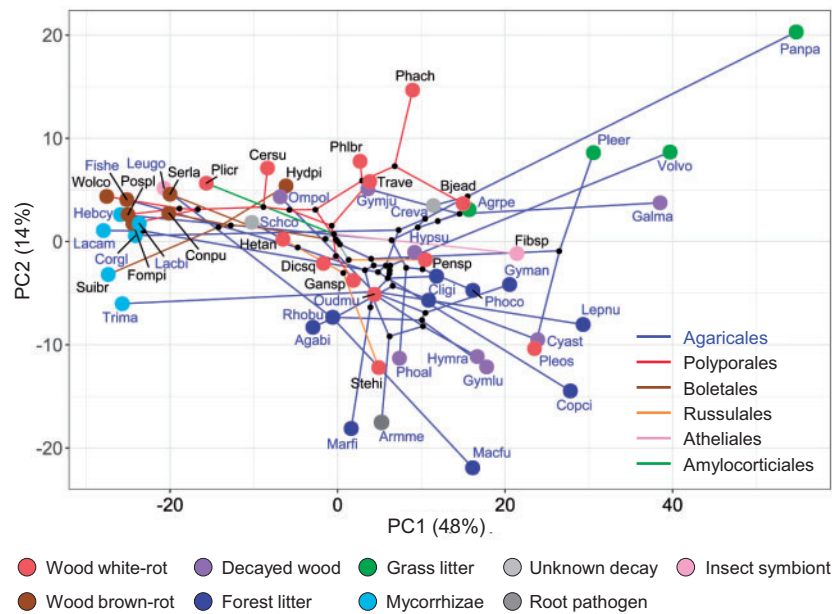
**Fig. 2.** Evolution of Agaricomycetes with different peroxidase sets. (Left) ML organismal phylogeny inferred (with most nodes having >95% support) from the genomes of 52 Agaricales, Boletales, Amylocorticiales (*Amy*), Atheliales (*Athe*), Polyporales, and Russulales species. Mean ages of the ancestral species (Ma) are indicated (black numbers) adjacent to the nodes. Based on figure 5, the tree also shows: 1) the appearance of the different class-II peroxidase (POD) types (large circles colored using the POD color code in the right); 2) their estimated age (Ma), indicated by a red number; 3) the age 95% hpd-interval, indicated by blue bars; and 4) the ancestor from which they derived, indicated by a small circle to their left. (Right) POD types identified including lignin peroxidases (LiP), versatile peroxidases (VP), atypical VPs (VP-a), short (MnP-s), long (MnP-l) and new (MnP-ESD, MnP-DGD, and MnP-DED) manganese peroxidases, new PODs (NPOD), and generic peroxidases (GP), the latter not involved in lignin degradation (the colored background of the different rows correspond to the different lifestyles).

been reported to include some soft-rot characteristics (Daniel et al. 1992; Schwarze 2007; Sahu et al. 2020). These observations taken together indicate not only a wide diversity but also a convergent evolution to different lignocellulose-decaying lifestyles in different lineages of the Agaricales phylogeny.

### Enzyme Repertoires and Lignocellulose-Decay Lifestyles

The genomes of saprotrophic Agaricomycetes encode a vast repertoire of carbohydrate- and lignin-degrading enzymes. A total of 18,645 classical CAZymes, 3,977 oxidoreductases, and 3,536 carbohydrate binding modules (CBMs) were identified in the 52 genomes analyzed (supplementary data set S3,

Supplementary Material online). Among them, we focused on the PCWDE repertoire, and the cellulose-binding CBM1, directly or indirectly participating in the decay of plant biomass (Chen et al. 2013; Rytioja et al. 2014; Martínez et al. 2018) shown in figure 1. The white-rot, grass-litter, forest-litter, and decayed-wood Agaricales and Russulales analyzed showed the highest PCWDE numbers (up to >250 genes per genome), whereas similar values are not present in the Polyporales and Boletales genomes analyzed nor in the genomes of Agaricales with other lifestyles (supplementary fig. S10, Supplementary Material online). A first quantitative analysis of these enzymes revealed a larger PCWDE (lignocellulose-degrading CAZymes and oxidoreductases included) variability in Agaricales compared with the other orders



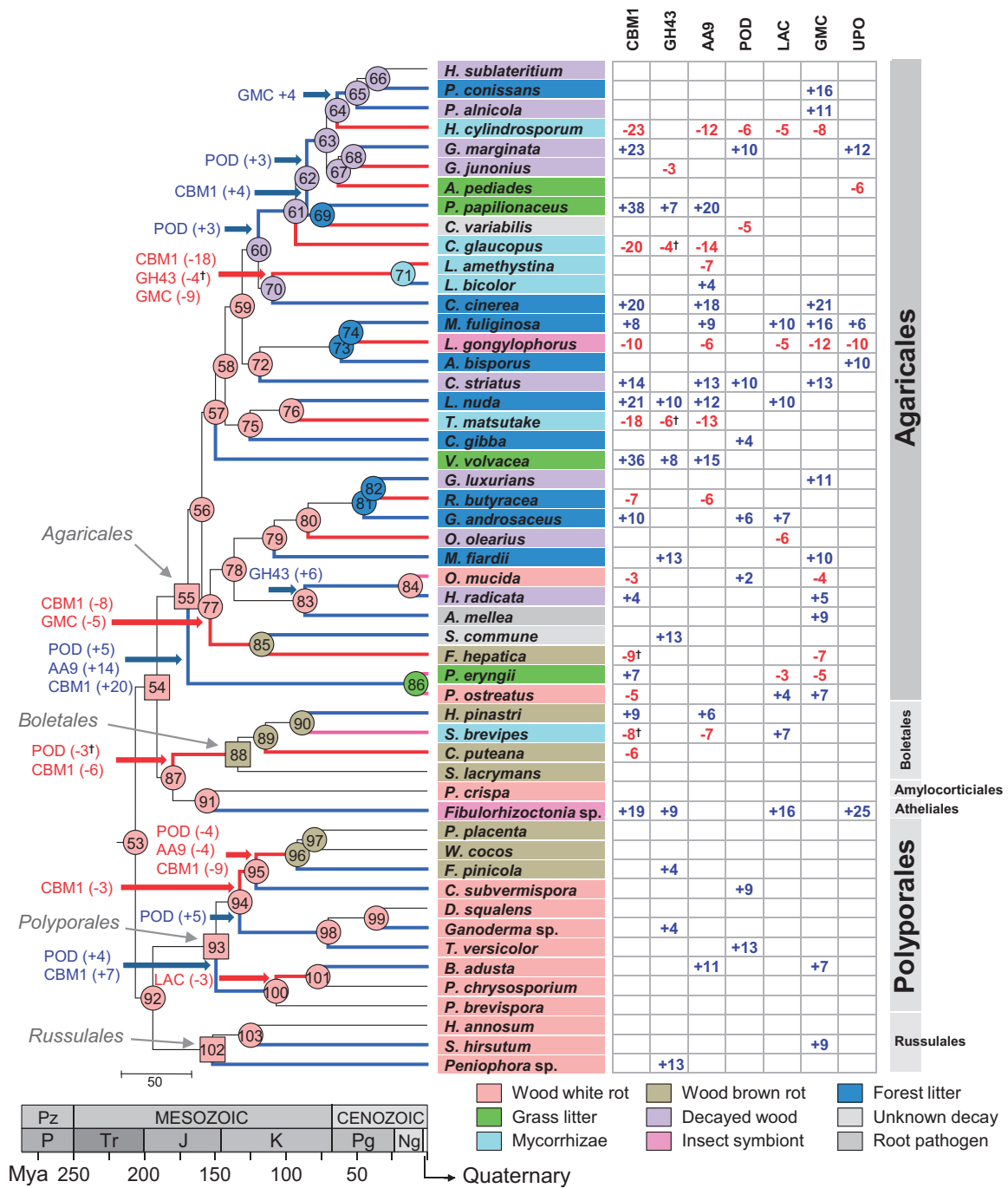
**Fig. 3.** pPCA representing changes of fungal lifestyle through evolutionary time in 52 species from six Agaricomycetes orders. The multivariate phylogenetic space locates the species according to their enzymatic machineries (shown in [fig. 1](#)) and phylogenetic relationships (from [fig. 2](#), left dated tree). In the PC1 versus PC2 plot presented, the species are shown as circles colored according to lifestyles, with branch colors of the phylogenetic tree projected into the morphospace indicating the order to which they belong. An interactive 3D plot is also available (as [supplementary file S2, Supplementary Material](#) online) and similar results ([supplementary fig. S4, Supplementary Material](#) online) were obtained using the seven gene families with higher evolutionary rates identified in [figure 4](#). Species abbreviations: Agabi, *Agaricus bisporus*; Agrpe, *Agrocybe pediadese*; Armme, *Armillaria mellea*; Bjead, *Bjerkandera adusta*; Cersu, *Ceriporiopsis subvermispora*; Cligi, *Clitocybe gibba*; Conpu, *Coniophora puteana*; Copci, *Coprinopsis cinerea*; Corgl, *Cortinarius glaucopus*; Creva, *Crepidotus variabilis*; Cyast, *Cyathus striatus*; Dicsq, *Dichomitus squalens*; Fibsp, *Fibulorhizoctonia* sp.; Fishe, *Fistulina hepatica*; Fompi, *Fomitopsis pinicola*; Galma, *Galerina marginata*; Gansp, *Ganoderma* sp.; Gyman, *Gymnopus androsaceus*; Gymlu, *Gymnopus luxurians*; Gymju, *Gymnopilus junonius*; Hebcy, *Hebeloma cylindrosporum*; Hetan, *Heterobasidion annosum*; Hydpi, *Hydnomerulius pinastris*; Hymra, *Hymenopellis radicata*; Hypsu, *Hypholoma sublateritium*; Lacam, *Laccaria amethystina*; Lacbi, *Laccaria bicolor*; Lepnu, *Lepista nuda*; Leugo, *Leucoagaricus gongylophorus*; Macfu, *Macrolepiota fuliginosa*; Marfi, *Marasmius fiardii*; Ompol, *Omphalotus olearius*; Oudmu, *Oudemansiella mucida*; Panpa, *Panaeolus papilionaceus*; Pensp, *Peniophora* sp.; Phach, *Phanerochaete chrysosporium*; Phlbr, *Phlebia brevispora*; Phoaal, *Pholiota alnicola*; Phoco, *Pholiota conissans*; Pleer, *Pleurotus eryngii*; Pleos, *Pleurotus ostreatus*; Plicr, *Plicaturopsis crispa*; Pospl, *Postia placenta*; Rhobu, *Rhodocollybia butyracea*; Schco, *Schizophyllum commune*; Serla, *Serpula lacrymans*; Stehi, *Stereum hirsutum*; Suibr, *Suillus brevipes*; Trave, *Trametes versicolor*; Trima, *Tricholoma matsutake*; Volvo, *Volvariella volvacea*; Wolco, *Wolfiporia cocos*.

analyzed (with diversity-index values Agaricales > Russulales > Polyporales > Boletales) (these differences are already shown in the gene-frequency distributions of [supplementary fig. S12, Supplementary Material](#) online).

Previous studies indicated that the white-rot machinery is the result of a complex evolutionary process with increased PCWDE gene numbers (Nagy, Riley, Bergmann, et al. 2016), whereas brown-rot, soft-rot, and ectomycorrhizal Agaricomycetes have reduced this gene complement (Floudas et al. 2012; Nagy, Riley, Tritt, et al. 2016), the latter with the simultaneous evolution of an ectomycorrhizal symbiosis toolkit (Kohler et al. 2015). Therefore, evolutionary changes in the PCWDE type and number are expected to contribute to the diversity of ecologies and lignocellulose-degradation lifestyles found in Agaricales. To visualize this diversity and the underlying relationships, we performed phylogenetic principal-component analysis (pPCA) using the gene-copy numbers of the 62 PCWDE families identified in [figure 1](#), and the organismal tree of [figure 2](#) (left) (for this analysis, the CE5 family was not split, in contrast to [fig. 1](#), only

laccases from the MCO superfamily were used, and CBM1 was included).

The resulting [figure 3](#) shows the species phylogenetic relationships and distribution over the 2D pPCA plot, with the first two components explaining 62% of the data variability. The extant species of different lifestyles (colored circles) occupy the final positions of a tree with branch colors identifying the Agaricomycetes orders, and black circles corresponding to ancestral species. An interactive 3D plot, explaining 70% of the variance, is available as [supplementary file S2, Supplementary Material](#) online. On PC1, a variety of glycoside hydrolases (GH10 and GH11 xylanases included) and CBM1 have the highest positive loading factors, together with AA9 LPMO ([supplementary fig. S3, Supplementary Material](#) online). Concerning PC2, GH127 arabinofuranosidase and PL1 pectin-lyase have high positive factors, and several oxidoreductases (GMC and laccase included) high negative factors. Agaricales (blue branches) appear widely distributed given their above-mentioned eco-physiological diversity. A first distribution of Agaricomycetes lifestyles is



**Fig. 4.** CAFE analysis revealing gene families with higher evolutionary rates in the phylogeny of the 52 species analyzed, and ancestral lifestyle predictions (as color codes at the tree nodes). Changes in gene-copy numbers estimated with CAFE in the seven families with significantly higher evolutionary rates (family-wide  $P < 0.01$ )—that is, POD, laccase (LAC), AA9 LPMO, GMC, UPO, GH43, and CBM1—in the different ancestral nodes (left) and in the last evolutionary step leading to the extant species (right) are shown. Blue and red branches indicate significant expansion and contraction of enzyme numbers (Viterbi  $P < 0.05$ ) in blue and red font, respectively (magenta branches indicate that both expansions and contractions occurred). †Complete loss of a gene type. The ancestral lifestyles reconstruction, carried out with a trained wknn algorithm (Samworth 2012), was based on gene numbers for the above seven families predicted by CAFE at the 53–103 nodes of the species tree. The nodes of the MRCAs of the Agaricomycetidae (node 54), Agaricales (node 55), Boletales (node 88), Polyporales (node 93), and Russulales (node 102) are shown as squares, whereas the rest of nodes are shown as circles (the predicted lifestyles are indicated by color codes).



evidenced along PC1, with ectomycorrhizal and brown-rot fungi in the negative part, decayed-wood, and forest-litter degraders in the central part, and grass-litter decomposers, including the coprophilous *P. papilionaceus*, in the positive part. White-rot fungi begin to differentiate from decayed-wood and forest-litter species on PC2, and differences with grass-litter fungi are better observed.

Furthermore, the 51 components explaining the whole data variability were used in a permutational analysis of variance (PERMANOVA) (supplementary table S5, Supplementary Material online). The five main lignocellulose-decaying lifestyles analyzed (white rot, brown rot, decayed wood, grass litter, and forest litter) plus mycorrhizae were determined to be collectively different according to the composition of their enzymatic sets, and all but one (forest-litter vs. decayed-wood decomposers) pairwise comparisons were found to be significantly ( $P < 0.05$ ) distinct. These observations reveal that fungi sharing lifestyle are related in their lignocellulose-degrading machinery, independently of their phylogenetic origin. The above results suggest that convergent evolution of the enzymatic sets toward a diversity of lignocellulose-decay lifestyles, and not only toward white rot and brown rot, has been produced in nature.

### Evolution of Saprotrophic Lifestyles (Computer-Assisted Gene-Family Evolution and Pattern Recognition Analyses)

Computer-assisted gene-family evolution (CAFE) analyses were performed with a 2-fold objective: 1) to determine enzyme diversification in the organismal phylogeny; and 2) to predict the overall content of the enzyme families in the ancestors of the extant species. As inputs, we used the time-calibrated fungal phylogeny (fig. 2, left) and the gene-copy numbers for the different PCWDE families (fig. 1). Twenty-four additional enzyme families participating in amino-acid metabolism (included in supplementary data set S4, Supplementary Material online), which are not expected to be involved in lignocellulose decay, were used as a background gene set. Surprisingly, only five oxidoreductase types (POD, laccase, AA9 LPMO, GMC, and unspecific peroxygenase [UPO]), one glycoside hydrolase (GH43), and CBM1 showed evolutionary rates significantly higher (family-wide  $P < 0.01$ ) than the average  $\lambda$  value for the whole enzyme set. The significant changes in gene-copy numbers in the different branches of the organismal tree (Viterbi  $P < 0.05$ ), and in the final step leading to the extant species, are shown in figure 4 (left and right, respectively).

The above suggests less abundant and more linear changes in the numbers of hydrolases (GH43 excluded), esterases, and lyases throughout Agaricomycetes evolution, in contrast with more abrupt contraction and expansion changes in oxidoreductases involved in cellulose and lignin degradation (five enzyme types). These conclusions are in agreement with recent results of An et al. (2019) on the evolution of mushroom lignocellulose-decay mechanisms. The expansion of ligninolytic PODs characterizing the evolution of white-rot Polyporales reported by Floudas et al. (2012), and here

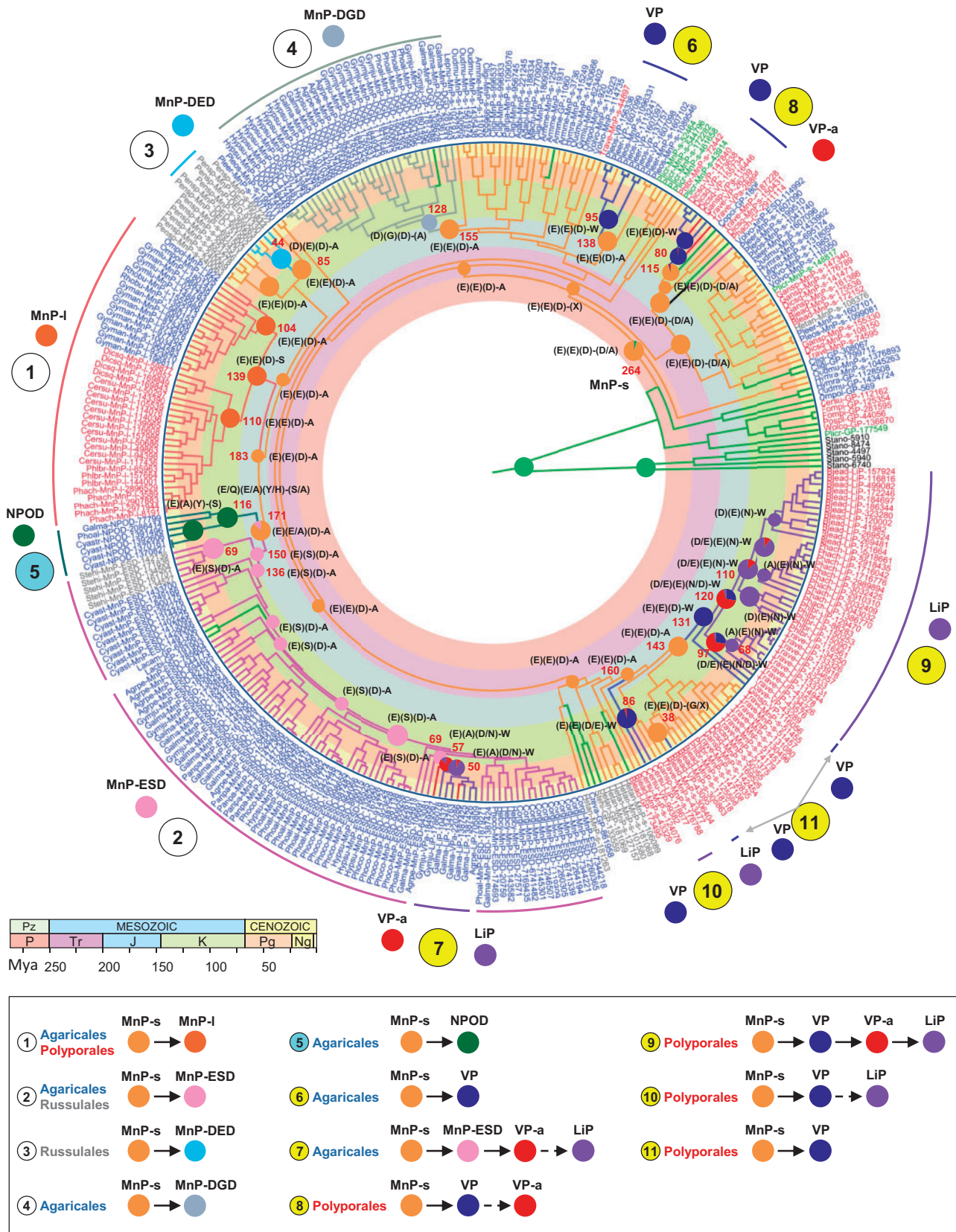
corroborated, is also observed in the evolution of saprotrophic Agaricales (fig. 4). This expansion of key enzymes in lignin degradation would have significantly contributed to the ecological diversity of this fungal order together with other changes in the enzyme sets, as described below.

As previously shown by PERMANOVA, white-rot, brown-rot, decayed-wood, forest-litter, grass-litter, and mycorrhizal lifestyles have distinct PCWDE repertoires. Based on these results, we hypothesized that it should be possible to assign the ancestors of the extant species to one of the six lifestyles using their enzymatic sets predicted by CAFE. To do this, we firstly trained the weighted k-nearest-neighbor (wknn) algorithm (with three tunable parameters) (Samworth 2012) using the copy numbers of the 62 families analyzed in the extant species as features. The accuracy of lifestyle prediction (i.e., the success rate when applied to the current species with known lifestyles) increased from 66% to 77% if the seven faster-evolving families (i.e., POD, laccase, AA9 LPMO, GMC, UPO, GH43, and CBM1) were used as input instead of the whole 62 families (supplementary fig. S5, Supplementary Material online). Therefore, the latter predictions provide us a useful tool for the prediction of ancestral lifestyles (supplementary section I7, Supplementary Material online) and confirmed the relevance of the above enzymes (and CBM) in lignocellulose-decay types.

By applying the trained algorithm to the selected enzyme sets reconstructed by CAFE (included in supplementary data set S4, Supplementary Material online), we were able to predict the lifestyles of the Agaricomycetes ancestors at the main nodes of the dated organismal tree. In this way, white-rot decay appeared as the ancestral lifestyle in our phylogeny (node 53 in fig. 4). This was also inferred for the MRCA of Agaricales (node 55), Polyporales (node 93), and Russulales (node 102), whereas the MRCA of Boletales appeared as a brown-rot fungus (node 88). Interestingly, the predicted ancestral lifestyles showed higher diversity within the phylogeny of Agaricales than of the other fungal orders (with decayed-wood and forest-litter as transition types between white-rot and other lifestyles, and grass-litter decomposers as the most recent lignocellulose-degrading group). Finally, our analysis showed multiple origins for the different saprotrophic lifestyles in the Agaricales (from white-rot ancestors), and also for mycorrhizae in the Agaricales and Boletales (from white-rot and brown-rot ancestors). Although limited by its current accuracy, the results obtained provide the first computational prediction on lifestyle evolution in saprotrophic Agaricales, and more generally in Agaricomycetes.

### Enzyme Families Contributing to Lifestyle Diversity in Saprotrophic Agaricales

The plant cell-wall decay machineries of the 52 fungal species under study were exhaustively analyzed (supplementary sections I9–I14, Supplementary Material online). However, given their relevance in the lignocellulose degradation process and contribution to the diversity of lignocellulose-decaying lifestyles, this section mainly focuses on the enzyme families, and CBM, with the highest evolutionary rates, previously identified by CAFE.



**FIG. 5.** Dated ML phylogenetic tree of the 336 POD sequences identified, with indication of relevant enzyme residues at the tree internal nodes (deduced by sequence reconstruction with PAML) suggesting eleven evolutionary pathways. Mean ages of selected ancestors (in Ma) are indicated in red numbers adjacent to the nodes (95% hpd-intervals are shown in fig. 2, left). Five GP sequences of *Stagonospora odorum* (Pleosporales, black labels) were used for rooting the tree. The 11 evolutionary pathways leading from ancestral MnP-s to extant POD types are indicated with white (those resulting in MnP subfamilies differing in the three Mn<sup>2+</sup>-binding residues, fig. 6E–G) or yellow (those giving rise to LiP/VP with a surface

A variety of classical CAZymes acting on cell-wall polysaccharides were identified (supplementary section I9, including figs. S10–S15 and [table S7, Supplementary Material](#) online). The diversity of these enzymes in the genomes analyzed is higher in Agaricales than in Russulales, Polyporales, and Boletales, as shown by diversity-index values of 4.39, 4.29, 4.03, and 3.92, respectively (these differences are already visible in the gene-frequency histograms of [supplementary fig. S11, Supplementary Material](#) online). Very recently, diversity in number and types of enzymes has been described by [Floudas et al. \(2020\)](#) in a more reduced set of litter-decomposing Agaricales, and correlated to their ability to decompose crystalline cellulose investigated by Raman spectroscopy. Related to this, the AA9 LPMO family, initiating crystalline cellulose degradation, presents large expansions in some terminal lineages of saprotrophic Agaricales ([fig. 4](#)). These expansions have led to grass-litter decomposers as the saprotrophic group with the highest gene-copy numbers of this LPMO family ( $P < 0.05$  for pairwise comparisons, binomial exact test). Similarly, grass-litter Agaricales have a larger average number of PCWDE genes appended to CBM1 (42 vs. 22, 18, 7, 0, and 1 in white-rot Polyporales and Russulales, brown-rot Boletales and Polyporales, and mycorrhizal Agaricales, respectively) ( $P < 0.05$  for pairwise comparisons, binomial exact test) ([supplementary table S7, Supplementary Material](#) online). This agrees with the differences observed between the two *Pleurotus* species analyzed, with the grassland-inhabiting *P. eryngii* having more CBM-appended genes than the wood-rotter *Pleurotus ostreatus*. The latter finding could be related to an improved action of CBM-appended catalytic domains preventing enzyme leaching in a loose environment, such as leaf litter, compared with compact wood.

The high evolutionary rates of POD, GMC, laccase, and UPO gene families, paralleling the ecological diversification in Agaricales, support the relevance of the oxidative enzymatic machinery in the evolution of saprotrophic lifestyles in this order. Among these enzymes, laccases are well-known phenoloxidases, but other members of the MCO superfamily also have laccase-like activity. Every genome analyzed presents MCO genes, whose phylogenetic analysis ([supplementary fig. S16, Supplementary Material](#) online) revealed clusters of different MCO families ([supplementary section I10](#), including figs. S16–S23 and [table S8, Supplementary Material](#) online). The average MCO number per genome was lower (40% decrease) in those species having at least one gene of the lignin peroxidase (LiP) family, discussed

below, than in those lacking LiP ( $P = 2.51 \times 10^{-5}$ , binomial exact test) ([figs. 1 and 2](#)) where MCOs appear overrepresented in the PCWDE set ( $P = 2.67 \times 10^{-5}$ , Fisher's exact test). These results suggest that MCOs can be an alternative to ligninolytic PODs in certain fungi and lifestyles. Laccases sensu stricto represent over 70% of all MCO genes ([supplementary table S8, Supplementary Material](#) online). Forest-litter Agaricales species have the highest numbers per genome (after *Fibulorhizoctonia* sp.) ( $P < 0.05$ , binomial exact test). Among over 70 atypical MCO sequences identified, 28 have been classified as novel laccases containing an arginine residue instead of the conserved aspartate involved in concerted electron and proton transfer ([Pardo et al. 2016](#)). These laccases, are only found in Agaricales and Russulales, being particularly abundant in some forest-litter species. Two of them had already been characterized from *Pleurotus* species ([Muñoz et al. 1997](#); [Giardina et al. 2007](#)). Another 29 sequences from Agaricales and Russulales also segregated from the rest, and have been classified as novel MCO lacking three of the conserved Cu-coordinating histidines ([supplementary fig. S20A, Supplementary Material](#) online). All nine genomes with this arrangement also encode the novel laccase described above, with the two enzyme families showing similar evolutionary events along the organismal phylogeny, which finally led to their loss in Polyporales and Boletales ([supplementary figs. S19 and S21, Supplementary Material](#) online).

UPO enzymes from the HTP superfamily have also been related to lignin degradation after showing that *Cyclocybe aegerita* UPO is able to demethylate nonphenolic lignin models, and degrade the released phenolic counterparts ([Kinne et al. 2011](#)). This enzyme is representative of the long-UPO subfamily, whereas the short-UPO subfamily includes enzymes from basidiomycetes and ascomycetes ([Hofrichter et al. 2020](#)). Among the 409 putative UPO genes identified in the 52 genomes analyzed ([supplementary table S14, Supplementary Material](#) online), short-UPOs are widely distributed and do not correlate with any lifestyle, whereas long-UPOs are nearly exclusive of Agaricales, and more abundant ( $P < 0.05$ , binomial exact test) and overrepresented ( $P < 0.05$ , Fisher's exact test) in forest-litter and decayed-wood species compared with white-rot and brown-rot decomposers. Expression of UPOs, together with PODs discussed below, has been observed in leaf litter across forest ecosystems ([Kellner et al. 2014](#)). Despite UPO activity on nonphenolic lignin model dimers, this enzyme has very low activity on polymeric lignin ([Kinne et al. 2009](#)), probably because it lacks the long-range electron transfer route found in PODs

**Fig. 5.** Continued

tryptophan) circles (the residues at these four positions are indicated adjacent to the nodes). A total of 95 MnP-s enzymes remained as such among the extant enzymes analyzed. The evolutionary pathway-5 (light blue circle) leads to PODs with alternative residues involved in enzyme activation by  $H_2O_2$  and a putative catalytic tyrosine ([fig. 6H](#)). The color of the nodes refers to the POD type to which the reconstructed ancestor belongs (two color sectors indicate reconstruction of two different ancestral types with different probabilities), and the color of the branches indicates the type of the next ancestor (or current enzyme) in the tree: light green, GP; light orange, MnP-s; dark orange, MnP-l; dark blue, VP; red, VPa; purple, LiP; pink, MnP-ESD; gray, MnP-DGD; light blue, MnP-DED; dark green, NPOD. The font color of the enzymes at the tips of the branches denotes the order of the fungi they belong to: blue, Agaricales; green, Amylocorticales; red, Polyporales; gray, Russulales; black, Pleosporales (Ascomycota). The color code of geological times, included as concentric circles, is explained in the geological timescale below the tree. The abbreviated enzyme names include the species abbreviation (as in [fig. 3](#)) followed by the (sub)family name, and the protein identification number at the corresponding JGI genomes.

(Martínez et al. 2018). Therefore, this enzyme most probably contributes to the transformation of lignin-derived compounds and soil organic matter by forest-litter and decayed-wood species, where we have seen it is more abundant.

Hydrogen peroxide plays a central role in lignocellulose degradation by Agaricomycetes, as the oxidizing substrate of peroxidases in white-rot decay (Martínez et al. 2009), and the precursor of hydroxyl radical in brown-rot decay (Baldrian and Valaskova 2008). The analysis of the enzymes of the GMC superfamily and CRO family responsible for H<sub>2</sub>O<sub>2</sub> production (Kersten and Cullen 2014; Ferreira et al. 2015) in the 52 fungal species is presented in supplementary section I11 (including figs. S24–S30 and tables S9–S13), [Supplementary Material](#) online. GMC genes were found in all the genomes analyzed ([supplementary table S9, Supplementary Material](#) online). Their average numbers are higher in Agaricales (and Russulales) ( $P < 0.05$  for pairwise comparisons, binomial exact test) ([supplementary table S11, Supplementary Material](#) online), and within this order in the forest-litter, decayed-wood, and white-rot degraders (and in *A. mellea*), mainly due to the high content of aryl-alcohol oxidases (AAO, in CAZy AA3\_2) ( $P < 0.05$  for pairwise comparisons, binomial exact test) ([supplementary table S12, Supplementary Material](#) online). Representing over 60% of the identified GMC genes, phylogenetic analysis revealed four AAO groups ([supplementary fig. S25A, Supplementary Material](#) online). AAO was absent from Boletales (and two Atheliales/Amylocorticiales). The distribution within the AAO groups also depends on the lifestyle, with most of the enzymes from grassland organisms grouped in the AAO-I subcluster, together with the well-known *P. eryngii* enzyme (Carro et al. 2016) ([supplementary fig. S25B, Supplementary Material](#) online).

Among the seven PCWDE and CBM families with the highest evolutionary rate, we paid special attention to ligninolytic PODs ([supplementary section I12, including figs. S31 and S32, Supplementary Material](#) online) in the superfamily of peroxidase-catalases (Zámocký et al. 2015) due to their key role in the overall process of lignocellulose degradation by white-rot fungi (Martínez et al. 2018). In contrast, they are absent from brown-rot fungi that only have, if any, nonligninolytic generic peroxidases (GP) (Ruiz-Dueñas et al. 2013). They are also absent from basidiomycetes characterized by their weak wood decay capabilities (Riley et al. 2014; Floudas et al. 2015). POD degradation of lignin, described as an enzymatic combustion (Kirk and Farrell 1987), facilitates the access of enzymes acting on the carbohydrate fraction of the plant cell wall (Martínez et al. 2009). Heme-containing DyPs are not discussed here because the corresponding genomic analyses ([supplementary tables S15–S17 and figs. S33–S35, Supplementary Material](#) online) do not show relevant relationships with the Agaricales lifestyles analyzed.

A comprehensive study—including gene annotation, amino-acid sequence inspection, phylogenetic analysis, and examination of structural models—allowed classifying the 336 POD sequences identified in 42 of the 52 genomes into already-known and new families and subfamilies. The result revealed a surprisingly high diversity of POD enzymes in

Agaricales, not seen before in other lignocellulose-degrading fungi. Among them, different manganese peroxidases (MnP), a family characterized by its ability to oxidize phenolic lignin and lignin compounds via Mn<sup>3+</sup> chelates (Gold et al. 2000), were recognized representing over 82% of the total 336 POD genes ([fig. 2, right](#)). To better understand the above POD diversity, the phylogenetic tree was analyzed and enzyme evolution was compared with that described in Polyporales (Ayuso-Fernández et al. 2018). For that, the POD phylogeny was time-calibrated, the amino-acid sequences of ancestors at the different nodes were reconstructed with PAML (Yang 2007), the evolutionary pathways to the extant POD enzymes were determined ([fig. 5](#)), and the appearance of the first and other relevant representatives of each POD type was dated in the species tree ([fig. 2, left](#)) to correlate the evolution of enzymes and fungi, as discussed in the next section.

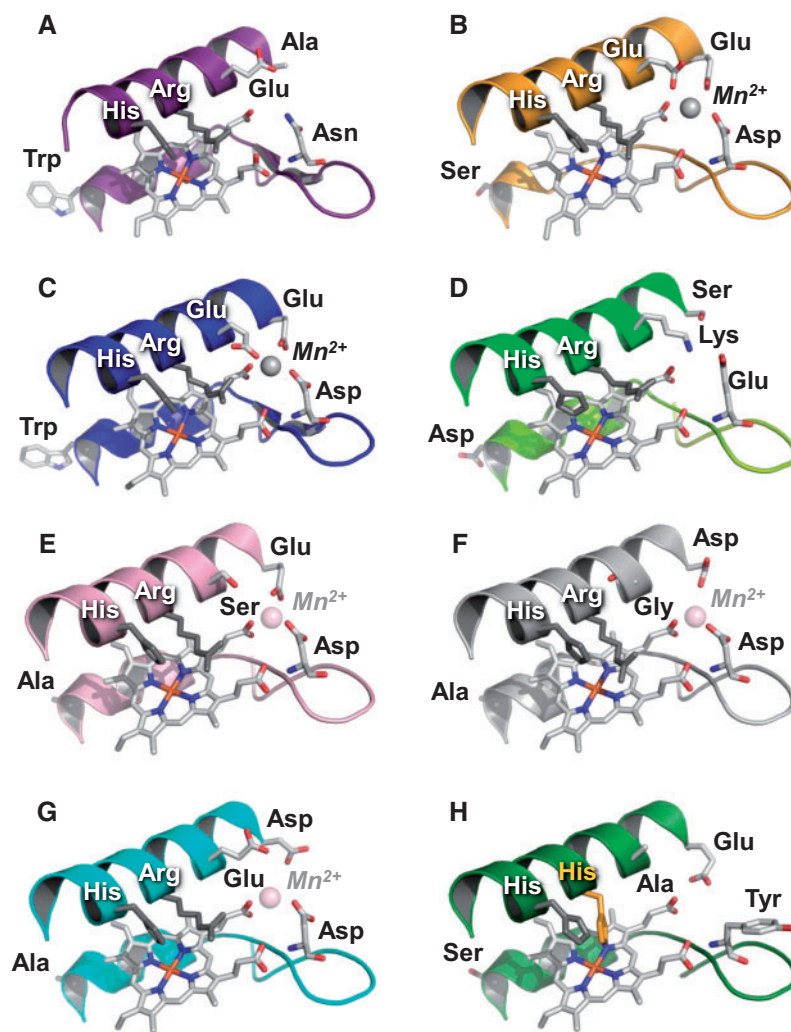
### Ligninolytic Peroxidases Revisited

#### Classical Manganese-Oxidizing Peroxidases (in Different Agaricomycetes)

MnP enzymes belonging to the long (MnP-I) and short (MnP-s) subfamilies were identified in many of the lignocellulose-degrading Agaricales species ([fig. 2, right](#)) with >2 genes per genome in members of the Omphalotaceae, Physalacriaceae, Pleurotaceae, Pluteaceae, and Tricholomataceae families. All these enzymes have a Mn<sup>2+</sup>-oxidation site formed by two glutamates and one aspartate ([fig. 6B](#)) but differ in the C-terminal tail length (Fernández-Fueyo et al. 2014). Enzymes similar to classical MnP-I, originally described in Polyporales, were found in forest-litter and decayed-wood Agaricales (such as *Omphalotus olearius*, *Gymnopus luxurians*, *Gymnopus androsaceus*, and *R. butyracea*). These enzymes diverged from a MnP-I common ancestor dated ~139 Ma (mean age, with 95% hpd-interval = 114–167 Ma) (evolutionary pathway-1 in [fig. 5](#)). Then, despite following independent evolutionary pathways, it seems that the Agaricales MnP-I has maintained the specificity for Mn<sup>2+</sup> oxidation (to Mn<sup>3+</sup>), as reported in *R. butyracea* (Valaskova et al. 2007). In contrast, MnP-s enzymes, whose evolutionary origin is commented below, catalyze both Mn<sup>3+</sup>-mediated and Mn<sup>3+</sup>-independent oxidative reactions (Fernández-Fueyo et al. 2014). Moreover, in many Agaricales and some Russulales, these enzymes coexist or have been replaced by those described as atypical MnPs, presenting only two acidic residues at the Mn<sup>2+</sup>-oxidation site.

#### Alternative Manganese-Oxidizing Peroxidases (in Agaricales and Russulales)

The above “atypical MnP” enzymes were until recently only occasionally identified (Lundell et al. 2014; Kohler et al. 2015). However, we found here that they represent the only ligninolytic peroxidases in lignocellulose-decaying *C. striatus* (Nidulariaceae), *P. alnicola*, *P. conissans*, and *Hypholoma sublateritium* (Strophariaceae), as well as in ectomycorrhizal *Hebeloma cylindrosporum* and *Cortinarius glaucopus* (Cortinariaceae) ([fig. 2, right](#)). According to these findings, the latter enzymes can no longer be considered “atypical.”



**Fig. 6.** Axial view of the heme region in classical (A–D) and alternative (E–H) POD families identified in the 52 fungal genomes. (A) LiP of *Phanerochaete chrysosporium* (PDB 1LLP) with catalytic tryptophan exposed to the solvent. (B) MnP-I of *P. chrysosporium* (PDB 1MnP) with  $Mn^{2+}$ -oxidation site formed by Glu/Glu/Asp residues (MnP-s presents the same  $Mn^{2+}$ -oxidation site). (C) VP of *Pleurotus eryngii* (PDB 3FJW) combining the exposed tryptophan of LiP and the  $Mn^{2+}$ -oxidation site of MnP. (D) GP of *Coprinopsis cinerea* (PDB 1ARP) lacking both the  $Mn^{2+}$ -oxidation site (a lysine residue prevents cation binding) and the exposed tryptophan. (E–G) Homology models of the MnP-ESD (from *Cyathus striatus*, JGI ID 1429066), MnP-DGD (from *Agrocybe pediades*, JGI ID 699589), and MnP-DED (from *Peniophora* sp., JGI ID 91330) enzymes, characterized by alternative  $Mn^{2+}$ -oxidation sites (formed by Glu/Ser/Asp, Asp/Gly/Asp, and Asp/Glu/Asp residues, respectively). (H) Homology model of the NPOD enzyme (from *C. striatus* JGI ID 1391496) where a Glu/Ala/Tyr triad occupies the position of the  $Mn^{2+}$ -oxidation site in MnP and VP, with the tyrosine residue of this triad at the same position of the catalytic tyrosine in the *Trametes cervina* LiP (Miki et al. 2011), and a His/His couple substituting the conserved His/Arg involved in activation by  $H_2O_2$  in other POD enzymes.

Moreover, they form well-defined clusters in the POD tree (fig. 5), and herein have been classified as two novel MnP subfamilies (globally representing 33% of all the POD sequences identified) differing in the  $Mn^{2+}$ -binding residues: 1) MnP-ESD (Glu/Ser/Asp  $Mn^{2+}$ -oxidation site, fig. 6E) with 78 genes identified (fig. 2, right); and 2) MnP-DGD (Asp/Gly/Asp  $Mn^{2+}$ -oxidation site, fig. 6F) with 30 genes. The  $Mn^{3+}$ -mediated activity of the novel subfamilies is supported by results reported for the *Agrocybe praecox* MnP (Hilden et al. 2014) herein classified as MnP-ESD. Following the same criterion, a third novel minor MnP type is reported with a different  $Mn^{2+}$ -oxidation site. Formed by Asp/Glu/Asp residues (MnP-DED in fig. 6G), it was identified in four enzymes of

*Peniophora* sp. (fig. 2, right) clustering separately from MnP-ESD and MnP-DGD.

In the search for the origin of the above alternative MnP enzymes, ancestral-sequence reconstruction predicted that different MnP-s enzymes were the ancestors of the MnP-ESD, MnP-DGD, and MnP-DED subfamilies. MnP-ESD in Agaricales and Russulales emerged from a MnP-ESD common ancestor dated ~150 (128–173) Ma (evolutionary pathway-2 in fig. 5). Moreover, an ancestral MnP-s (~183 Ma) was predicted to be the common ancestor of both MnP-ESD and MnP-I (therefore also representing the beginning of the evolutionary pathway-1). The above results suggest that the MnP-ESD subfamily was present in the MRCA of Russulales

and Agaricomycetidae (Agaricales, Boletales, Amylocorticiales, and Atheliales included) which has been reconstructed as a wood white-rot fungus (fig. 4). Although MnP-ESD enzymes can be currently found in wood-degrading *Stereum hirsutum* (Russulales), where they have been related to ligninolytic activity (Presley et al. 2018), this MnP subfamily is characteristic of Agaricales with a variety of lignocellulose-degrading (grass-litter, forest-litter, and decayed-wood) lifestyles (fig. 2, right). Moreover, MnP-ESD enzymes are the only ligninolytic PODs identified in ectomycorrhizal *Hebeloma cylindrosporum* and *Cortinarius glaucopus* (Cortinariaceae), where they have been related to the reworking of recalcitrant (partially lignin-derived) organic matter in forest soils (Bodeker et al. 2014). Their absence in other mycorrhizal Agaricales (such as *Laccaria amethystina*, *Laccaria bicolor*, and *Tricholoma matsutake*) suggests a different reduction of the PCWDE complement (Kohler et al. 2015) in the independently evolved mycorrhizal lineages these species belong to. Similarly, their absence in all Polyporales indicates reduction events and loss in the MRCA of this order. On the other hand, the six atypical MnP enzymes identified in *Auricularia* (Floudas et al. 2012) can now be classified as MnP-ESD, suggesting an independent evolutionary lineage leading to the extant MnP-ESD enzymes in the early-diverging Auriculariales.

In contrast, MnP-DGD and MnP-DED present single evolutionary origins ~128 (104–152) Ma and ~44 (24–66) Ma, respectively (evolutionary pathway-4 and pathway-3, respectively, in fig. 5). According to our analysis, the MnP-DED subfamily arose within the Russulales, and the MnP-DGD subfamily appeared in an ancestral Agaricales species (fig. 2, left), most probably in the transition between white-rot and decayed-wood lifestyles (ancestors at the nodes 59 and 60 in fig. 4). Subsequent expansions resulted in the number of MnP-DGD (up to ten genes per genome) in grass-litter and decayed-wood decomposers of the family Strophariaceae (fig. 2, right). Although the oxidative capabilities of MnP-DED and MnP-DGD have yet to be demonstrated, results from site-directed mutagenesis of the similar Mn<sup>2+</sup>-oxidation site of versatile peroxidase (VP) (Ruiz-Dueñas et al. 2007) suggest that both enzymes should be able to generate Mn<sup>3+</sup> oxidizer, although maybe less efficiently than typical MnP enzymes.

#### Evolution to “Ligninases” Par Excellence

The evolution of PODs in Agaricales has, however, gone beyond MnP. Sequence reconstructions of the progeny of ancestral MnP-s predict the appearance of a surface tryptophan, conferring the ability to abstract electrons from nonphenolic lignin and transfer them to the cofactor via a long-range electron transfer pathway as “true ligninases” (Sáez-Jiménez et al. 2016). This change led to a first VP (evolutionary pathway-6 in fig. 5) that evolved to the extant *Pleurotus* VPs (fig. 6C). These enzymes are characterized by combining the catalytic properties of MnP, associated with the Mn<sup>2+</sup>-oxidation site, and LiP, associated with the surface tryptophan (Ruiz-Dueñas et al. 2007, 2009). In an independent

evolutionary pathway, the surface catalytic tryptophan appeared ~57 (44–71) Ma (fig. 2, left) in an atypical VP (VP-a) of a decayed-wood decomposer (most probably the ancestor at node 67 in fig. 4). This VP-a was an intermediate step (before loss of the Mn<sup>2+</sup>-oxidation site) in MnP evolution toward the LiP enzymes identified in three decayed-wood and grass-litter (*G. marginata*, *A. pediades*, and *G. junonius*) Strophariaceae species (evolutionary pathway-7 in fig. 5). The pathway is characterized by including an ancestral MnP-ESD, unlike the pathway leading to *Pleurotus* VPs and the four pathways leading to Polyporales VPs and LiPs (fig. 6A), two of them (pathway-8 and pathway-9 in fig. 5) experimentally demonstrated by enzyme resurrection (Ayuso-Fernández et al. 2018). Finally, six members of a second LiP subfamily that, instead of the tryptophan described above, has a surface tyrosine at the same position of the catalytic tyrosine in the *Trametopsis cervina* (Polyporales) LiP (supplementary fig. S31A, Supplementary Material online) (Miki et al. 2013) have also been identified in three decayed-wood Agaricales (*P. alnicola*, *G. Marginata*, and *C. striatus*) (fig. 2, right). However, they were cataloged as a new POD (NPOD) type due to the residues putatively involved in activation by H<sub>2</sub>O<sub>2</sub> (fig. 6H), which differ from those conserved in all POD enzymes characterized to date.

#### Overview of POD Evolution

The above analysis of POD evolution brings to light the large number of changes that occurred in these enzymes along the evolutionary time, leading to different families and subfamilies. MnP-s would be the ancestral type since, according to figure 5, it appeared ~264 (240–286) Ma, followed by MnP-ESD being ~150 (128–173) Ma with a probable second origin by convergent evolution in the Auriculariales. From these ancestral enzymes the other POD types arose inside the different lineages able to degrade lignocellulose. Thus, MnP-DGD and NPOD appeared in Agaricales, MnP-DED arose in Russulales, and VP and LiP appeared several times in Agaricales and Polyporales by convergent evolution from different POD ancestors. According to our predictions, most POD subfamilies appeared in white-rot ancestors, with the exception of MnP-DGD that probably appeared in the transition between white-rot and decayed-wood lifestyles, and VP-a from Agaricales in a decayed-wood decomposer. The different POD families would be the result of exploration of new mechanisms to modify lignin (Ayuso-Fernández et al. 2017). The changes in the catalytic residues that have allowed us to establish the different evolutionary pathways are just the tip of the iceberg of the many other changes that would have occurred in their molecular architecture throughout evolution (e.g., affecting substrate affinity and oxidation rate, stability, or redox potential). Some of these changes, identified in Polyporales by ancestral POD resurrection, were related to lignin evolution in plants (Ayuso-Fernández et al. 2019). A similar evolution would be expected in Agaricales, which most likely would have led to an evolutionary adaptation of their enzymes to the different lignocellulosic

substrates on which these fungi grow in nature, although this has yet to be demonstrated experimentally.

## Conclusions

The genomic analysis herein presented has revealed that, compared with other orders of Agaricomycetes, the Agaricales possess a larger diversity of PCWDEs, in agreement with their wider contribution to global carbon cycle in both forest and grassland ecosystems. This enzyme diversity has resulted in distinct PCWDE repertoires responsible for the different lignocellulose-decaying lifestyles characterizing this order. Based on the reconstruction of ancestral enzyme inventories, a wood white-rot species was predicted as the MRCA of the Agaricales, Polyporales, Russulales, Boletales, Amylocorticiales, and Atheliales orders. This ancestral lifestyle was maintained in the MRCAs of Agaricales, Polyporales, and Russulales, whereas it changed to brown rot in the ancestor of Boletales. In the latter three orders, the lignocellulolytic systems evolved around a dominant saprotrophic nutritional strategy primarily focused on wood. By contrast, we predict that changes in the composition of the lignocellulolytic system during the last 170 My led Agaricales ancestral species to shift their growth preferences toward a wider diversity of lignocellulosic substrates. Our results indicate that these shifts of the enzyme sets converged several times in different saprotrophic (grass litter, forest litter, and decayed wood) and also biotrophic (e.g., mycorrhizal) lifestyles in the phylogeny of this order.

In these evolutionary processes, expansion/contraction and diversification of key enzymes involved in lignocellulose degradation are produced. Thus, a significant expansion of AA9 LPMOs acting on crystalline cellulose and the increase in CBM1-appended PCWDEs are outstanding evolutionary events in grass-litter decomposers. Similarly, other oxidoreductases both directly involved in lignin degradation (such as POD, GMC, and laccase-type enzymes) and/or contributing to the catabolism of lignin-derived compounds (such as some of the above enzymes plus UPO) markedly evolved in Agaricales. This is evidenced by the increased abundances of laccases *sensu stricto* and long-UPO enzymes characterizing the forest-litter decomposers (the latter enzymes being also abundant in decayed-wood species) and by the widespread increase of AAO in forest-litter, decayed-wood, and white-rot Agaricales. Finally, POD enzymes, characterized by their key role in lignin degradation, underwent an evolutionary process resulting in the surprisingly high diversity of families and subfamilies identified in the extant Agaricales. Different evolutionary pathways were identified for ligninolytic peroxidases, leading from ancestral short MnP to long MnP, LiP, VP, and several new POD types. The latter include two alternative MnP subfamilies widespread in Agaricales, where they represent over 50% of all the POD genes. One of these subfamilies, MnP-ESD, appeared before the diversification of Russulales and Agaricomycetidae, remaining only in Agaricales (and Russulales) with very different lignocellulose-decaying lifestyles, whereas MnP-DGD arose directly in an ancestral species of the order Agaricales and it is specific to

grass-litter and decayed-wood decomposers. All of the above indicates that the lignocellulolytic machinery of leaf-litter decomposers would have differentiated from that of wood-degrading fungi in key enzymes acting on the polysaccharide and lignin fractions of the plant cell wall, resulting in: 1) diversification of ligninolytic peroxidases; 2) increased amount of CBM1-appended PCWDEs, and AA9 LPMO enzymes (in grassland decomposers); and 3) enrichment in laccases *sensu stricto* and long-UPOs (in forest-litter decomposers).

In short, a detailed analysis of Agaricomycetes lifestyles is herein presented based on comparative genomic data. This analysis unveils how Agaricales have developed complex enzymatic machineries to decompose the different types of lignocellulosic biomass constituting their carbon and energy source. Although it remains to be fully understood how the elements of these machineries engage to be efficient in nature, with this study we have contributed to expand our knowledge of the functional diversity of the Agaricales, one of the most diverse orders of fungi existing in nature.

## Materials and Methods

### Genome Sequencing, Assembly, and Annotation

New Agaricales genomes were sequenced in the JGI projects “Study of the lignocellulolytic machinery in saprobic wood and leaf litter degrading Agaricales” and “Metatranscriptomics of forest soil ecosystems.” Detailed information on the fungal strains, culture conditions, DNA and RNA extraction, and genome sequencing, assembly, and annotation are provided in supplementary sections I1–I3, [Supplementary Material](#) online.

Briefly, genomes were sequenced using Illumina and PacBio technologies, assembled with Velvet ([Zerbino and Birney 2008](#)), AllPathsLG version R49403 ([Gnerre et al. 2011](#)), or Falcon (<https://github.com/PacificBiosciences/FALCON>; last accessed November 17, 2020), improved with finisherSC ([Lam et al. 2015](#)), polished with Quiver (<https://github.com/PacificBiosciences/GenomicConsensus>; last accessed November 17, 2020), and annotated with the JGI Annotation pipeline. RNA-seq transcriptomic data were used to improve the annotation of the fungal genomes. BUSCO version 4.1.1 assessment tool ([Seppey et al. 2019](#)) was used in both genome and protein modes to determine the completeness scores of the new genomic assemblies and annotations with the specific data set *agaricales\_odb10* (3870 BUSCO groups) downloaded from <https://busco-data.ezlab.org/v4/data/lineages>; last accessed November 17, 2020. Phylogenetic ANOVA using the function *phylANOVA* ([Garland et al. 1993](#)) implemented in the R *phytools* package ([Core Team 2020](#)) was employed to test for differences in genome size and gene content among fungal orders and among fungal lifestyles.

The 14 *de novo* sequenced, 35 published ([Martin et al. 2008](#); [Martinez et al. 2009](#); [Ohm et al. 2010](#); [Stajich et al. 2010](#); [Eastwood et al. 2011](#); [Fernández-Fueyo et al. 2012](#); [Floudas et al. 2012](#); [Morin et al. 2012](#); [Wawrzyn et al. 2012](#); [Aylward et al. 2013](#); [Bao et al. 2013](#); [Binder et al. 2013](#); [Collins et al. 2013](#); [Ohm et al. 2014](#); [Riley et al. 2014](#); [Branco et al. 2015](#);

Floudas et al. 2015; Kohler et al. 2015; Nagy, Riley, Tritt, et al. 2016; Barbi et al. 2020) and three pending publication genomes analyzed (up to a total of 52) cover 28 families within Agaricales, Polyporales, Russulales, Boletales, Atheliales, and Amylocorticiales. All are available at the JGI MycoCosm (<https://mycocosm.jgi.doe.gov>; last accessed November 17, 2020).

### Identification of PCWDE and Other Genes in Genomes

Classical CAZymes and LPMO genes were annotated by the CAZy pipeline (Lombard et al. 2014). POD, MCO, GMC, CRO, DyP, and UPO oxidoreductases were identified in the automatically annotated genomes by BLASTing amino-acid sequences of representative enzymes as queries. The identified oxidoreductases were assigned to different families and subfamilies based on analysis of their amino-acid sequences, active sites in structural models generated at the SWISS-MODEL server (Waterhouse et al. 2018), and phylogenetic relationships. Bonferroni-corrected one-tailed exact binomial tests and one-tailed Fisher's exact tests, implemented in R, were performed to determine the differences in PCWDE families copy number and enrichment between biological groups, respectively. Identification of repetitive sequences was performed by the RECON (Bao and Eddy 2002) and RepeatScout (Price et al. 2005) programs. Gene-family diversity in the fungal groups (e.g., orders) whose genomes were sequenced was estimated using the following algorithm (Brillouin 1962):

$$\text{diversity} = \frac{1}{N} \left( \log_2 N! - \sum_{i=1}^{i=s} \log_2 n_i! \right),$$

where  $N$  is the total gene number (of PCWDEs, CAZymes, etc.), and  $n_i$  are the average numbers of genes of each of the  $s$  enzyme families.

### Species Tree and Molecular Dating

We reconstructed an organismal phylogeny with orthologous genes identified in the 52 genomes using FastOrtho with the parameters set to 50% identity, 50% coverage, and inflation 3.0 (Wattam et al. 2014). Clusters with single-copy genes were identified and aligned with MAFFT 7.221 (Kato and Standley 2013), single-gene alignments were concatenated, and ambiguous regions (containing gaps and poorly aligned) were removed with Gblocks 0.91b (Talavera and Castresana 2007). A ML tree was reconstructed with RAxML v. 8 (Stamatakis 2014) using the PROTGAMMAWAG model of sequence evolution and 1,000 bootstrap replicates.

The species phylogeny was time-calibrated using the penalized likelihood algorithm as implemented in r8s 1.8.1 (Sanderson 2003) with the POWELL optimization algorithm. A secondary calibration was performed using the ranges of dates for the origin of Agaricales (160–182 Ma), Boletales (133–153 Ma), and Agaricomycetidae (174–192 Ma) from Varga et al. (2019). A cross-validation analysis was performed in order to identify the appropriate smoothing parameter.

### Phylogenetic PCA

pPCA was performed using the function `phyl.pca` (Revell 2009) from the R phytools package (Core Team 2020). As input, we used the time-calibrated species tree and the matrix of 62 PCWDE families and CBM1 (included in supplementary data set S4, Supplementary Material online). Then, the phylomorphospace function (`phytools`) was used to show the species phylogenetic relationships and ancestral node position over the pPCA plot. The significance of the differences observed in the phylomorphospace was tested by PERMANOVA as implemented in the `Adonis` function of the R package `vegan` (Oksanen et al. 2019) using the first 51 principal components (explaining the whole data variability) to reduce redundancy. Pairwise tests were performed applying the False Discovery Rate (FDR) correction to the  $P$  values (Benjamini and Hochberg 1995). An alpha of 0.05 was used as the cutoff for significance.

### Gene-Family Evolution Analysis

The CAFE ver. 4.1 program (De Bie et al. 2006; Han et al. 2013) was used to analyze gene-family expansions and contractions in the 62 enzyme families and CBM1 previously described for pPCA. The time-calibrated species tree and the gene-family numbers, including those of 24 additional families participating in amino-acid metabolism (present in the 52 fungal genomes) as a background gene set (supplementary data set S4, rows 1–53, Supplementary Material online), were used as inputs. The gene-copy numbers of all the above enzymes (and CBM1) at ancestral nodes reconstructed with CAFE are presented in rows 54–104 of supplementary data set S4, Supplementary Material online. The ML value of the birth and death parameter ( $\lambda$ ) describing the probability that any gene will be gained or lost, over a time interval, was estimated for the whole tree. Gene families with a family-wide  $P$  value  $< 0.01$  were considered to have a significantly higher rate of evolution. Then, a Viterbi  $P$  value  $< 0.05$  was used to determine the branches in the species tree in which these fast-evolving families underwent significant contractions or expansions.

### Ancestral Lifestyle Reconstruction

The above CAFE estimations of gene-copy numbers at each node of the organismal phylogeny were used to infer the ancestral lifestyles, using either the whole 62 PCWDE families annotated in the genomes or the seven faster-evolving enzymes and CBM1 (i.e., POD, laccase, AA9 LPMO, GMC, UPO, GH43, and CBM1) identified by the program. This was done using the machine-learning `wknn` algorithm (Samworth 2012) as implemented in the `knn` R package, which was trained using the known lifestyles and identified enzyme repertoires of the extant species analyzed. Model training consisted of tuning up different parameters, including 1) number of neighbor ( $k$ ) values from 1 to 25 (higher  $k$  values were not used to avoid bias of the results toward the most abundant lifestyles); 2) distance function (we tested several  $d$  values and it was found that precision decreases when  $d$  increases, so we finally used Manhattan distance,  $d = 1$ ); and 3) Kernel function (i.e., rectangular, triangular,



epanechnikov, gaussian, rank, and optima) used to translate distances into weights. Combining these parameters, 300 predictive models were evaluated (supplementary fig. S5, Supplementary Material online) using the leave-one-out cross-validation test to optimize the results in terms of accuracy. Finally, the model with the highest accuracy was selected for classification of the ancestral node lifestyles.

### POD Phylogenetic and Molecular Clock Analyses

A total of 336 POD amino-acid sequences were aligned with MUSCLE, as implemented in MEGA X (Kumar et al. 2018). The GP sequences of *Stagonospora nodorum*, available at JGI (<http://genome.jgi.doe.gov/Stano1/Stano1.home.html>; last accessed November 17, 2020), were included in the alignment for tree rooting. The ML phylogeny was reconstructed with RAxML ver. 8 through the CIPRES Science Gateway ver. 3.3 (Miller et al. 2015) using 1,000 bootstrap replicates, under the WAG model of evolution and gamma-distributed rate of heterogeneity, with empirical amino-acid frequencies and invariant sites (WAG + I + G + F) as suggested by ProtTest (Darriba et al. 2011) (supplementary fig. S32, Supplementary Material online).

The peroxidase phylogeny was time-calibrated with BEAST v. 2.2.1 (Bouckaert et al. 2014) using an uncorrelated lognormal relaxed molecular clock with a birth-death prior and a WAG substitution model. The topology was fixed using the POD phylogenetic tree from the RAxML analysis described above. A secondary calibration was performed using the dates of the split of Dikarya, the origin of Basidiomycota, and the origin of Pezizomycotina (Floudas et al. 2012). Four independent chains were run for 50 million generations each and sampling every 5,000 generations. Chain convergence was assessed using Tracer 1.7.1 (Rambaut et al. 2018). Fifty percent of the samples were discarded as burn-in and a maximum clade credibility tree with mean ages was obtained with TreeAnnotator 2.2.1.

### Reconstruction of Ancestral POD Enzymes

PAML 4.7 (Yang 2007) was used to obtain the most probable sequence at each node of the POD phylogeny, as reported for reconstruction of Polyporales ancestral POD enzymes (Ayuso-Fernández et al. 2019). We used the WAG model of evolution, and the previously obtained MUSCLE alignment and ML phylogeny as inputs for the software. Then, as with extant POD sequences, relevant information was obtained on 1) proximal histidine, 2) distal residues responsible for activation by H<sub>2</sub>O<sub>2</sub>, and 3) Mn<sup>2+</sup>-oxidation site and surface tryptophan (or tyrosine) residue involved in oxidation of lignin. This information enabled us to classify the reconstructed ancestors in the different POD types illustrated in figure 6.

Additional information on gene identification, ancestral lifestyle and sequence predictions, species and POD phylogenetic analyses, and tree time-calibration are provided in Supplementary Material online.

### Supplementary Material

Supplementary data are available at *Molecular Biology and Evolution* online.

### Acknowledgments

This work was supported by the Spanish Ministry of Economy, Industry and Competitiveness (BIO2017-86559-R to F.J.R.-D., S.C., and A.T.M., BIO2015-7369-JIN to J.B., and AGL2014-55971-R to A.G.P. and L.R., projects cofinanced by FEDER funds); National Science Foundation (grant 1457721 to D.C.); Bundesministerium für Bildung und Forschung (CEFOX 031B0831B to H.K.); Deutsche Forschungsgemeinschaft (Biodiversity-Exploratories BLD-MFD-HZG III, KE 1742/2-1 to H.K.); Consejo Superior de Investigaciones Científicas (PIE-201620E081 to A.T.M.); and the Laboratory of Excellence ARBRE (ANR-11-LABX-0002-01), the Region Lorraine, the European Regional Development Fund, and the Plant–Microbe Interfaces Scientific Focus Area in the Genomic Science Program, U.S. DOE Office of Science (to F.M.). The work conducted by the JGI, a DOE Office of Science User Facility, is supported by the Office of Science of the U.S. DOE under contract DE-AC02-05CH11231. We thank Ronald de Vries for providing the *Crepidotus variabilis*, *Oudemansiella mucida*, and *Lepista nuda* strains from the CBS-KNAW collection, and Steven Ahrendt for assistance with GenBank submissions. Finally, we acknowledge support of the publication fee by the CSIC Open Access Publication Support Initiative through its Unit of Information Resources for Research (URICI).

### Data Availability

The assembled genome sequences are publicly available at the JGI fungal genome portal MycoCosm (<http://jgi.doe.gov/fungi>; last accessed November 17, 2020) and at GenBank under the accession numbers JADNRF000000000 for *Agrocybe pediades* AH 40210, JADNYI000000000 for *Clitocybe gibba* IJFM A808, JADNRE000000000 for *Crepidotus variabilis* CBS 506.95, JADNRW000000000 for *Cyathus striatus* AH 40144, JADNYJ000000000 for *Gymnopilus junonius* AH 44721, JADNRX000000000 for *Hymenopellis radicata* IJFM A160, JADNYU000000000 for *Lepista nuda* CBS 247.69, JADOGJ000000000 for *Macrolepiota fuliginosa* MF-IS2, JADNYV000000000 for *Oudemansiella mucida* CBS 558.79, JADNRZ000000000 for *Panaeolus papilionaceus* CIRM-BRFM 715, JADNRV000000000 for *Pholiota alnicola* AH 47727, JADNRG000000000 for *Pholiota conissans* CIRM-BRFM 674, JADNRH000000000 for *Pleurotus eryngii* ATCC 90797, and JADNRY000000000 for *Rhodocollybia butyracea* AH 40177. All data underlying this article are available in the main publication and in its Supplementary Material online. Any additional information can be obtained on request to the corresponding author.

### References

- An Q, Wu XJ, Dai YC. 2019. Comparative genomics of 40 edible and medicinal mushrooms provide an insight into the evolution of lignocellulose decomposition mechanisms. *3 Biotech* 9(4):157.
- Aylward FO, Burnum-Johnson KE, Tringe SG, Teiling C, Tremmel DM, Moeller JA, Scott JJ, Barry KW, Piehowski PD, Nicora CD, et al. 2013. *Leucoagaricus gongylophorus* produces diverse enzymes for the degradation of recalcitrant plant polymers in leaf-cutter ant fungus gardens. *Appl Environ Microbiol.* 79(12):3770–3778.

- Ayuso-Fernández I, Martínez AT, Ruiz-Dueñas FJ. 2017. Experimental recreation of the evolution of lignin degrading enzymes from the Jurassic to date. *Biotechnol Biofuels* 10(1):67.
- Ayuso-Fernández I, Rencoret J, Gutiérrez A, Ruiz-Dueñas FJ, Martínez AT. 2019. Peroxidase evolution in white-rot fungi follows wood lignin evolution in plants. *Proc Natl Acad Sci U S A*. 116(36):17900–17905.
- Ayuso-Fernández I, Ruiz-Dueñas FJ, Martínez AT. 2018. Evolutionary convergence in lignin degrading enzymes. *Proc Natl Acad Sci U S A*. 115(25):6428–6433.
- Baldrian P, Valaskova V. 2008. Degradation of cellulose by basidiomycete fungi. *FEMS Microbiol Rev*. 32(3):501–521.
- Bao DP, Gong M, Zheng HJ, Chen MJ, Zhang L, Wang H, Jiang JP, Wu L, Zhu YQ, Zhu G, et al. 2013. Sequencing and comparative analysis of the straw mushroom (*Volvariella volvacea*) genome. *PLoS One* 8(3):e58294.
- Bao Z, Eddy SR. 2002. Automated de novo identification of repeat sequence families in sequenced genomes. *Genome Res*. 12(8):1269–1276.
- Barbi F, Kohler A, Barry K, Baskaran P, Daum C, Fauchery L, Ihrmark K, Kuo A, LaButti K, Lipzen A, et al. 2020. Fungal ecological strategies reflected in gene transcription—a case study of two litter decomposers. *Environ Microbiol*. 22(3):1089–1103.
- Bar-On Y, Phillips R, Milo R. 2018. The biomass distribution on Earth. *Proc Natl Acad Sci U S A*. 115(25):6506–6511.
- Batjes NH. 2014. Total carbon and nitrogen in the soils of the world. *Eur J Soil Sci*. 65(1):10–21.
- Benjamini Y, Hochberg Y. 1995. Controlling the false discovery rate: a practical and powerful approach to multiple testing. *J R Statist Soc B* 57(1):289–300.
- Binder M, Justo A, Riley R, Salamov A, Lopez-Giraldez F, Sjakvist E, Copeland A, Foster B, Sun H, Larsson E, et al. 2013. Phylogenetic and phylogenomic overview of the Polyporales. *Mycologia* 105(6):1350–1373.
- Bodeker ITM, Clemmensen KE, de Boer W, Martin F, Olson A, Lindahl BD. 2014. Ectomycorrhizal *Cortinarius* species participate in enzymatic oxidation of humus in northern forest ecosystems. *New Phytol*. 203(1):245–256.
- Bouckaert R, Heled J, Kühnert D, Vaughan T, Wu C-H, Xie D, Suchard MA, Rambaut A, Drummond AJ. 2014. A software platform for Bayesian evolutionary analysis. *PLoS Comput Biol*. 10(4):e1003537–6.
- Branco S, Gladieux P, Ellison CE, Kuo A, LaButti K, Lipzen A, Grigoriev IV, Liao HL, Vilgalys R, Peay KG, et al. 2015. Genetic isolation between two recently diverged populations of a symbiotic fungus. *Mol Ecol*. 24(11):2747–2758.
- Brillouin L. 1962. Science and information theory. Oxford: Academic.
- Carro J, Serrano A, Ferreira P, Martínez AT. 2016. Fungal aryl-alcohol oxidase in lignocellulose degradation and bioconversion. In: Gupta VK, Tuohy MG, editors. Microbial enzymes in bioconversions of biomass. Berlin (Germany): Springer. p. 301–322.
- Chen S, Su L, Chen J, Wu J. 2013. Cutinase: characteristics, preparation, and application. *Biotechnol Adv*. 31(8):1754–1767.
- Collins C, Keane TM, Turner DJ, O’Keeffe G, Fitzpatrick DA, Doyle S. 2013. Genomic and proteomic dissection of the ubiquitous plant pathogen, *Armillaria mellea*: toward a new infection model system. *J Proteome Res*. 12(6):2552–2570.
- Core Team. 2020. R: a language and environment for statistical computing. Vienna (Austria): R Foundation for Statistical Computing. Available from: <https://www.R-project.org>. Accessed November 17, 2020.
- Couturier M, Ladevèze S, Sulzenbacher G, Ciano L, Fanuel M, Moreau C, Villares A, Cathala B, Chaspoul F, Frandsen KE, et al. 2018. Lytic xylan oxidases from wood-decay fungi unlock biomass degradation. *Nat Chem Biol*. 14(3):306–310.
- Daniel G, Nilsson T. 1998. Developments in the study of soft rot and bacterial decay. In: Bruce A, Palfreyman JW, editors. Forest products biotechnology. London: Taylor & Francis. p. 37–62.
- Daniel G, Volc J, Nilsson T. 1992. Soft rot and multiple T-branching by the basidiomycete *Oudemansiella mucida*. *Mycol Res*. 96(1):49–54.
- Darriba D, Taboada GL, Doallo R, Posada D. 2011. ProtTest 3: fast selection of best-fit models of protein evolution. *Bioinformatics* 27(8):1164–1165.
- De Bie T, Cristianini N, Demuth JP, Hahn MW. 2006. CAFE: a computational tool for the study of gene family evolution. *Bioinformatics* 22(10):1269–1271.
- Eastwood DC, Floudas D, Binder M, Majcherczyk A, Schneider P, Aerts A, Asiegbu FO, Baker SE, Barry K, Bendiksby M, et al. 2011. The plant cell wall-decomposing machinery underlies the functional diversity of forest fungi. *Science* 333(6043):762–765.
- Fernández-Fueyo E, Acebes S, Ruiz-Dueñas FJ, Martínez MJ, Romero A, Medrano FJ, Guallar V, Martínez AT. 2014. Structural implications of the C-terminal tail in the catalytic and stability properties of manganese peroxidases from ligninolytic fungi. *Acta Crystallogr D Biol Crystallogr*. 70(12):3253–3265.
- Fernández-Fueyo E, Ruiz-Dueñas FJ, Ferreira P, Floudas D, Hibbett DS, Canessa P, Larrondo L, James TY, Seelenfreund D, Lobos S, et al. 2012. Comparative genomics of *Ceriporiopsis subvermispora* and *Phanerochaete chrysosporium* provide insight into selective ligninolysis. *Proc Natl Acad Sci U S A*. 109(14):5458–5463.
- Ferreira P, Carro J, Serrano A, Martínez AT. 2015. A survey of genes encoding H<sub>2</sub>O<sub>2</sub>-producing GMC oxidoreductases in 10 Polyporales genomes. *Mycologia* 107(6):1105–1119.
- Filiatrault-Chastel C, Navarro D, Haon M, Grisel S, Herpoel-Gimbert I, Chevret D, Fanuel M, Henrissat B, Heiss-Blanquet S, Margeot A, et al. 2019. AA16, a new lytic polysaccharide monooxygenase family identified in fungal secretomes. *Biotechnol Biofuels* 12:55.
- Floudas D, Bentzer J, Ahrén D, Johansson T, Persson P, Tunlid A. 2020. Uncovering the hidden diversity of litter-decomposition mechanisms in mushroom-forming fungi. *ISME J*. 14(8):2046–2059.
- Floudas D, Binder M, Riley R, Barry K, Blanchette RA, Henrissat B, Martínez AT, Otilar R, Spatafora JW, Yadav JS, et al. 2012. The Paleozoic origin of enzymatic lignin decomposition reconstructed from 31 fungal genomes. *Science* 336(6089):1715–1719.
- Floudas D, Held BW, Riley R, Nagy LG, Koehler G, Ransdell AS, Younus H, Chow J, Chiniquy J, Lipzen A, et al. 2015. Evolution of novel wood decay mechanisms in Agaricales revealed by the genome sequences of *Fistulina hepatica* and *Cylindrobasidium torrendii*. *Fungal Genet Biol*. 76:78–92.
- Garland T Jr, Dickerman AW, Janis CM, Jones JA. 1993. Phylogenetic analysis of covariance by computer simulation. *Syst Biol*. 42(3):265–292.
- Giardina P, Autore F, Faraco V, Festa G, Palmieri G, Piscitelli A, Sanna G. 2007. Structural characterization of heterodimeric laccases from *Pleurotus ostreatus*. *Appl Microbiol Biotechnol*. 75(6):1293–1300.
- Gnerre S, Maccallum I, Przybylski D, Ribeiro FJ, Burton JN, Walker BJ, Sharpe T, Hall G, Shea TP, Sykes S, et al. 2011. High-quality draft assemblies of mammalian genomes from massively parallel sequence data. *Proc Natl Acad Sci U S A*. 108(4):1513–1518.
- Gold MH, Youngs HL, Gelpke MD. 2000. Manganese peroxidase. *Met Ions Biol Syst*. 37:559–586.
- Han MV, Thomas GWC, Lugo-Martinez J, Hahn MW. 2013. Estimating gene gain and loss rates in the presence of error in genome assembly and annotation using CAFE 3. *Mol Biol Evol*. 30(8):1987–1997.
- Hilden K, Makela MR, Steffen KT, Hofrichter M, Hatakka A, Archer DB, Lundell TK. 2014. Biochemical and molecular characterization of an atypical manganese peroxidase of the litter-decomposing fungus *Agrocybe praecox*. *Fungal Genet Biol*. 72:131–136.
- Hofrichter M, Kellner H, Herzog R, Karich A, Liers C, Scheibner K, Kimani VW, Ullrich R. 2020. Fungal peroxygenases: a phylogenetically old superfamily of heme enzymes with promiscuity for oxygen transfer reactions. In: Nevalainen H, editor. Grand challenges in fungal biotechnology. Cham (Switzerland): Springer. p. 369–404.
- Katoh K, Standley DM. 2013. MAFFT multiple sequence alignment software version 7: improvements in performance and usability. *Mol Biol Evol*. 30(4):772–780.
- Kellner H, Luis P, Pecyna MJ, Barbi F, Kapturska D, Krüger D, Zak DR, Marmeisse R, Vandenbol M, Hofrichter M. 2014. Widespread

- occurrence of expressed fungal secretory peroxidases in forest soils. *PLoS One* 9(4):e95557.
- Kersten P, Cullen D. 2014. Copper radical oxidases and related extracellular oxidoreductases of wood-decay Agaricomycetes. *Fungal Genet Biol.* 72:124–130.
- Kinne M, Poraj-Kobielska M, Ralph SA, Ullrich R, Hofrichter M, Hammel KE. 2009. Oxidative cleavage of diverse ethers by an extracellular fungal peroxygenase. *J Biol Chem.* 284(43):29343–29349.
- Kinne M, Poraj-Kobielska M, Ullrich R, Nousiainen P, Sipilä J, Scheibner K, Hammel KE, Hofrichter M. 2011. Oxidative cleavage of non-phenolic b-O-4 lignin model dimers by an extracellular aromatic peroxygenase. *Holzforschung* 65(5):673–679.
- Kirk TK, Farrell RL. 1987. Enzymatic “combustion”: the microbial degradation of lignin. *Annu Rev Microbiol.* 41(1):465–505.
- Kohler A, Kuo A, Nagy LG, Morin E, Barry KW, Buscot F, Canback B, Choi C, Cichocki N, Clum A, et al. 2015. Convergent losses of decay mechanisms and rapid turnover of symbiosis genes in mycorrhizal mutualists. *Nat Genet.* 47(4):410–415.
- Krah FS, Bässler C, Heibl C, Soghigian J, Schaefer H, Hibbett DS. 2018. Evolutionary dynamics of host specialization in wood-decay fungi. *BMC Evol Biol.* 18(1):119.
- Kumar S, Stecher G, Li M, Knyaz C, Tamura K. 2018. MEGA X: molecular evolutionary genetics analysis across computing platforms. *Mol Biol Evol.* 35(6):1547–1549.
- Lam KK, LaButti K, Khalak A, Tse D. 2015. FinisherSC: a repeat-aware tool for upgrading de novo assembly using long reads. *Bioinformatics* 31(19):3207–3209.
- Lombard V, Ramulu HG, Drula E, Coutinho PM, Henrissat B. 2014. The carbohydrate-active enzymes database (CAZy) in 2013. *Nucleic Acids Res.* 42(D1):D490–D495.
- Lundell TK, Mäkelä MR, de Vries RP, Hildén KS. 2014. Genomics, lifestyles and future prospects of wood-decay and litter-decomposing Basidiomycota. In: Francis MM, editor. *Advances in botanical research fungi*. London: Academic Press. p. 329–370.
- Martin F, Aerts A, Ahren D, Brun A, Danchin EGJ, Duchaussoy F, Gibon J, Kohler A, Lindquist E, Pereda V, et al. 2008. The genome of *Laccaria bicolor* provides insights into mycorrhizal symbiosis. *Nature* 452(7183):88–92.
- Martínez AT, Camarero S, Ruiz-Dueñas FJ, Martínez MJ. 2018. Biological lignin degradation. In: Beckham GT, editor. *Lignin valorization: emerging approaches*. London: Royal Society of Chemistry. p. 199–225.
- Martínez AT, Rencoret J, Nieto L, Jiménez-Barbero J, Gutiérrez A, del Río JC. 2011. Selective lignin and polysaccharide removal in natural fungal decay of wood as evidenced by *in situ* structural analyses. *Environ Microbiol.* 13(1):96–107.
- Martínez AT, Ruiz-Dueñas FJ, Martínez MJ, del Río JC, Gutiérrez A. 2009. Enzymatic delignification of plant cell wall: from nature to mill. *Curr Opin Biotechnol.* 20(3):348–357.
- Martínez AT, Speranza M, Ruiz-Dueñas FJ, Ferreira P, Camarero S, Guillén F, Martínez MJ, Gutiérrez A, del Río JC. 2005. Biodegradation of lignocelluloses: microbiological, chemical and enzymatic aspects of fungal attack to lignin. *Int Microbiol.* 8:195–204.
- Martinez D, Challacombe J, Morgenstern I, Hibbett DS, Schmoll M, Kubicek CP, Ferreira P, Ruiz-Dueñas FJ, Martínez AT, Kersten P, et al. 2009. Genome, transcriptome, and secretome analysis of wood decay fungus *Postia placenta* supports unique mechanisms of lignocellulose conversion. *Proc Natl Acad Sci U S A.* 106(6):1954–1959.
- Martinez D, Larrondo LF, Putnam N, Gelpke MD, Huang K, Chapman J, Helfenbein KG, Ramaiya P, Detter JC, Larimer F, et al. 2004. Genome sequence of the lignocellulose degrading fungus *Phanerochaete chrysosporium* strain RP78. *Nat Biotechnol.* 22(6):695–700.
- Miki Y, Calviño FR, Pogni R, Giansanti S, Ruiz-Dueñas FJ, Martínez MJ, Basosi R, Romero A, Martínez AT. 2011. Crystallographic, kinetic, and spectroscopic study of the first ligninolytic peroxidase presenting a catalytic tyrosine. *J Biol Chem.* 286(17):15525–15534.
- Miki Y, Pogni R, Acebes S, Lucas F, Fernández-Fueyo E, Baratto MC, Fernández MI, de los Ríos V, Ruiz-Dueñas FJ, Sinicropi A, et al. 2013. Formation of a tyrosine adduct involved in lignin degradation by *Trametes cervina* lignin peroxidase: a novel peroxidase activation mechanism. *Biochem J.* 452(3):575–584.
- Miller MA, Schwartz T, Pickett BE, He S, Klem EB, Scheuermann RH, Passarotti M, Kaufman S, O’Leary MA. 2015. A RESTful API for access to phylogenetic tools via the CIPRES science gateway. *Evol Bioinform Online.* 11:43–48.
- Miyauchi S, Hage H, Drula E, Lesage-Meessen L, Berrin JG, Navarro D, Favel A, Chaduli D, Grisel S, Haon M, et al. 2020. Conserved white-rot enzymatic mechanism for wood decay in the *Basidiomycota* genus *Pycnoporus*. *DNA Res.* 27(2):dsaa011.
- Miyauchi S, Rancon A, Drula E, Hage H, Chaduli D, Favel A, Grisel S, Henrissat B, Herpoël-Gimbert I, Ruiz-Dueñas FJ, et al. 2018. Integrative visual omics of the white-rot fungus *Polyporus brumalis* exposes the biotechnological potential of its oxidative enzymes for delignifying raw plant biomass. *Biotechnol Biofuels* 11(1):201.
- Morin E, Kohler A, Baker AR, Foulongne-Oriol M, Lombard V, Nagy LG, Ohm RA, Patyshakuliyeva A, Brun A, Aerts AL, et al. 2012. Genome sequence of the button mushroom *Agaricus bisporus* reveals mechanisms governing adaptation to a humic-rich ecological niche. *Proc Natl Acad Sci U S A.* 109(43):17501–17506.
- Muñoz C, Guillén F, Martínez AT, Martínez MJ. 1997. Laccase isoenzymes of *Pleurotus eryngii*: characterization, catalytic properties and participation in activation of molecular oxygen and Mn<sup>2+</sup> oxidation. *Appl Environ Microbiol.* 63(6):2166–2174.
- Nagy LG, Riley R, Bergmann PJ, Krizsán K, Martin FM, Grigoriev IV, Cullen D, Hibbett DS. 2016. Genetic bases of fungal white rot wood decay predicted by phylogenomic analysis of correlated gene-phenotype evolution. *Mol Biol Evol.* 34(1):35–44.
- Nagy LG, Riley R, Tritt A, Adam C, Daum C, Floudas D, Sun H, Yadav JS, Pangilinan J, Larsson KH, et al. 2016. Comparative genomics of early-diverging mushroom-forming fungi provides insights into the origins of lignocellulose decay capabilities. *Mol Biol Evol.* 33(4):959–970.
- Oghenekaro AO, Kovalchuk A, Raffaello T, Camarero S, Gressler M, Henrissat B, Lee J, Liu M, Martínez AT, Miettinen O, et al. 2020. Genome sequencing of *Rigidoporus microporus* provides insights on genes important for wood decay, latex tolerance and interspecific fungal interactions. *Sci Rep.* 10(1):5250.
- Ohm RA, de Jong JF, Lugones LG, Aerts A, Kothe E, Stajich JE, de Vries RP, Record E, Levasseur A, Baker SE, et al. 2010. Genome sequence of the model mushroom *Schizophyllum commune*. *Nat Biotechnol.* 28(9):957–963.
- Ohm RA, Riley R, Salamov A, Min B, Choi IG, Grigoriev IV. 2014. Genomics of wood-degrading fungi. *Fungal Genet Biol.* 72:82–90.
- Oksanen J, Blanchet FG, Friendly M, Kindt R, Legendre P, McGlenn D, Minchin PR, O’Hara RB, Simpson GL, Solymos P, et al. 2019. vegan: community ecology package. R package v.2.5-6. Available from: <https://CRAN.R-project.org/package=vegan>. Accessed November 17, 2020.
- Pardo I, Santiago G, Gentili P, Lucas F, Monza E, Medrano FJ, Galli C, Martínez AT, Guallar V, Camarero S. 2016. Re-designing the substrate binding pocket of laccase for enhanced oxidation of sinapic acid. *Catal Sci Technol.* 6(11):3900–3910.
- Presley GN, Panisko E, Purvine SO, Schilling JS. 2018. Comparing the temporal process of wood metabolism among white and brown rot fungi by coupling secretomics with enzyme activities. *Appl Environ Microbiol.* 84(16):e00159-18.
- Price AL, Jones NC, Pevzner PA. 2005. *De novo* identification of repeat families in large genomes. *Bioinformatics* 21 (Suppl 1):i351–i358.
- Quinlan RJ, Sweeney MD, Lo Leggio L, Otten H, Poulsen JCN, Johansen KS, Krogh KBRM, Jørgensen CI, Tovborg M, Anthonsen A, et al. 2011. Insights into the oxidative degradation of cellulose by a copper metalloenzyme that exploits biomass components. *Proc Natl Acad Sci U S A.* 108(37):15079–15084.
- Ralph J, Lundquist K, Brunow G, Lu F, Kim H, Schatz PF, Marita JM, Hatfield RD, Ralph SA, Christensen JH, et al. 2004. Lignins: natural polymers from oxidative coupling of 4-hydroxyphenylpropanoids. *Phytochem Rev.* 3(1–2):29–60.

- Rambaut A, Drummond AJ, Xie D, Baele G, Suchard MA. 2018. Posterior summarization in Bayesian phylogenetics using Tracer 1.7. *Syst Biol*. 67(5):901–904.
- Revell LJ. 2009. Size-correction and principal components for interspecific comparative studies. *Evolution* 63(12):3258–3268.
- Riley R, Salamov AA, Brown DW, Nagy LG, Floudas D, Held BW, Lévassieur A, Lombard V, Morin E, Otiillar R, et al. 2014. Extensive sampling of basidiomycete genomes demonstrates inadequacy of the white-rot/brown-rot paradigm for wood decay fungi. *Proc Natl Acad Sci U S A*. 111(27):9923–9928.
- Ruiz-Dueñas FJ, Lundell T, Floudas D, Nagy LG, Barrasa JM, Hibbett DS, Martínez AT. 2013. Lignin-degrading peroxidases in Polyporales: an evolutionary survey based on ten sequenced genomes. *Mycologia* 105(6):1428–1444.
- Ruiz-Dueñas FJ, Morales M, García E, Miki Y, Martínez MJ, Martínez AT. 2009. Substrate oxidation sites in versatile peroxidase and other basidiomycete peroxidases. *J Exp Bot*. 60(2):441–452.
- Ruiz-Dueñas FJ, Morales M, Pérez-Boada M, Choinowski T, Martínez MJ, Piontek K, Martínez AT. 2007. Manganese oxidation site in *Pleurotus eryngii* versatile peroxidase: a site-directed mutagenesis, kinetic and crystallographic study. *Biochemistry* 46(1):66–77.
- Rytioja J, Hilden K, Yuzon J, Hatakka A, de Vries RP, Makela MR. 2014. Plant-polysaccharide-degrading enzymes from Basidiomycetes. *Microbiol Mol Biol Rev*. 78(4):614–649.
- Sáez-Jiménez V, Rencoret J, Rodríguez-Carvajal MA, Gutiérrez A, Ruiz-Dueñas FJ, Martínez AT. 2016. Role of surface tryptophan for peroxidase oxidation of nonphenolic lignin. *Biotechnol Biofuels* 9(1):198.
- Sahu N, Merényi Z, Bálint B, Kiss B, Sipos G, Owens R, Nagy LG. 2020. Hallmarks of basidiomycete soft- and white-rot in wood-decay - omics data of *Armillaria*. *bioRxiv*2020.
- Samworth RJ. 2012. Optimal weighted nearest neighbour classifiers. *Ann Statist*. 40(5):2733–2763.
- Sanderson MJ. 2003. r8s: inferring absolute rates of molecular evolution and divergence times in the absence of a molecular clock. *Bioinformatics* 19(2):301–302.
- Schwarze FWMR. 2007. Wood decay under the microscope. *Fungal Biol Rev*. 21(4):133–170.
- Seppy M, Manni M, Zdobnov EM. 2019. BUSCO: assessing genome assembly and annotation completeness. *Methods Mol Biol*. 1962:227–245.
- Sipos G, Prasanna AN, Walter MC, O'Connor E, Bálint B, Krizsán K, Kiss B, Hess J, Varga T, Slot J, et al. 2017. Genome expansion and lineage-specific genetic innovations in the forest pathogenic fungi *Armillaria*. *Nat Ecol Evol*. 1(12):1931–1941.
- Stajich JE, Wilke SK, Ahren D, Au CH, Birren BW, Borodovsky M, Burns C, Canbäck B, Casselton LA, Cheng CK, et al. 2010. Insights into evolution of multicellular fungi from the assembled chromosomes of the mushroom *Coprinopsis cinerea* (*Coprinus cinereus*). *Proc Natl Acad Sci U S A*. 107(26):11889–11894.
- Stamatakis A. 2014. RAXML version 8: a tool for phylogenetic analysis and post-analysis of large phylogenies. *Bioinformatics* 30(9):1312–1313.
- Talavera G, Castresana J. 2007. Improvement of phylogenies after removing divergent and ambiguously aligned blocks from protein sequence alignments. *Syst Biol*. 56(4):564–577.
- Valaskova V, Snajdr J, Bittner B, Cajthaml T, Merhautova V, Hofrichter M, Baldrian P. 2007. Production of lignocellulose-degrading enzymes and degradation of leaf litter by saprotrophic basidiomycetes isolated from a *Quercus petraea* forest. *Soil Biol Biochem*. 39(10):2651–2660.
- Vanden Wymelenberg A, Gaskell J, Mozuch M, Kersten P, Sabat G, Martinez D, Cullen D. 2009. Transcriptome and secretome analyses of *Phanerochaete chrysosporium* reveal complex patterns of gene expression. *Appl Environ Microbiol*. 75(12):4058–4068.
- Varga T, Krizsán K, Földi C, Dima B, Sánchez-García M, Sánchez-Ramírez S, Szöllosi GJ, Szarkándi JG, Papp V, Albert L, et al. 2019. Megaphylogeny resolves global patterns of mushroom evolution. *Nat Ecol Evol*. 3(4):668–678.
- Waterhouse A, Bertoni M, Bienert S, Studer G, Tauriello G, Gumienny R, Heer FT, de Beer TAP, Rempfer C, Bordoli L, et al. 2018. SWISS-MODEL: homology modelling of protein structures and complexes. *Nucleic Acids Res*. 46(W1):W296–W303.
- Wattam AR, Abraham D, Dalay O, Disz TL, Driscoll T, Gabbard JL, Gillespie JJ, Gough R, Hix D, Kenyon R, et al. 2014. PATRIC, the bacterial bioinformatics database and analysis resource. *Nucleic Acids Res*. 42(D1):D581–D591.
- Wawrzyn GT, Quin MB, Choudhary S, López-Gallego F, Schmidt-Dannert C. 2012. Draft genome of *Omphalotus olearius* provides a predictive framework for sesquiterpenoid natural product biosynthesis in Basidiomycota. *Chem Biol*. 19(6):772–783.
- Yang ZH. 2007. PAML 4: phylogenetic analysis by maximum likelihood. *Mol Biol Evol*. 24(8):1586–1591.
- Zámocký M, Hofbauer S, Schaffner I, Gasselhuber B, Nicolussi A, Soudi M, Pirker KF, Furtmüller PG, Obinger C. 2015. Independent evolution of four heme peroxidase superfamilies. *Arch Biochem Biophys*. 574:108–119.
- Zerbino DR, Birney E. 2008. Velvet: algorithms for de novo short read assembly using de Bruijn graphs. *Genome Res*. 18(5):821–829.