

# UC Davis

## UC Davis Previously Published Works

### Title

Comprehensive genomic profiles of small cell lung cancer

### Permalink

<https://escholarship.org/uc/item/4s11n24r>

### Journal

Nature, 524(7563)

### ISSN

0028-0836

### Authors

George, Julie

Lim, Jing Shan

Jang, Se Jin

et al.

### Publication Date

2015-08-06

### DOI

10.1038/nature14664

Peer reviewed



Published in final edited form as:

Nature. 2015 August 6; 524(7563): 47–53. doi:10.1038/nature14664.

## Comprehensive genomic profiles of small cell lung cancer

A full list of authors and affiliations appears at the end of the article.

### Abstract

We have sequenced the genomes of 110 small cell lung cancers (SCLC), one of the deadliest human cancers. In nearly all the tumours analysed we found bi-allelic inactivation of *TP53* and *RB1*, sometimes by complex genomic rearrangements. Two tumours with wild-type *RB1* had evidence of chromothripsis leading to overexpression of cyclin D1 (encoded by the *CCND1* gene), revealing an alternative mechanism of Rb1 deregulation. Thus, loss of the tumour suppressors *TP53* and *RB1* is obligatory in SCLC. We discovered somatic genomic rearrangements of *TP73* that create an oncogenic version of this gene, *TP73 ex2/3*. In rare cases, SCLC tumours exhibited kinase gene mutations, providing a possible therapeutic opportunity for individual patients. Finally, we observed inactivating mutations in *NOTCH* family genes in 25% of human SCLC. Accordingly, activation of Notch signalling in a pre-clinical SCLC mouse model strikingly reduced the number of tumours and extended the survival of the mutant mice. Furthermore, neuroendocrine gene expression was abrogated by Notch activity in SCLC cells. This first comprehensive study of somatic genome alterations in SCLC uncovers several key biological processes and identifies candidate therapeutic targets in this highly lethal form of cancer.

Small cell lung cancer (SCLC) accounts for approximately 15% of all lung cancers, arises in heavy smokers, and the tumour cells express neuroendocrine markers. Although chemotherapy is initially effective in the treatment of SCLC, recurrence arises rapidly in the vast majority of cases, usually killing the patient within only a few months<sup>1</sup>. SCLC is rarely

Reprints and permissions information is available at [www.nature.com/reprints](http://www.nature.com/reprints).

Correspondence and requests for materials should be addressed to R.K.T. ([roman.thomas@uni-koeln.de](mailto:roman.thomas@uni-koeln.de)), J.S. ([julsage@stanford.edu](mailto:julsage@stanford.edu)) or M.P. ([mpeifer@uni-koeln.de](mailto:mpeifer@uni-koeln.de)).

<sup>†</sup>Present address: Genetic Cancer Susceptibility Group, Section of Genetics, International Agency for Research on Cancer (IARC-WHO), 69008 Lyon, France.

\*These authors contributed equally to this work.

**Supplementary Information** is available in the online version of the paper.

**Author Contributions** J.G., J.S.L., M.P., J.S. and R.K.T. conceived the project, analysed and interpreted the data, and wrote the manuscript. J.G., J.S.L., J.S., F.L., R.M., S.P., D.E., B.Pü, M.S.W., J.O.K., J.A., C.B., M.B. and P.S. designed experiments. J.G., J.S.L., I.D., C.M., A.T., R.M., S.-M.C., D.K., D.E., I.V., D.S., B.Pi, P.S., C.B., P.M.S. and M.Bog performed experiments. J.G., M.P., J.S.L., S.A.H., M.V., M.S.W., J.O.K., Y.C., X.L., D.V., M.W., N.H. and M.Bos performed data analysis. E.B., W.D.T., R.B., L.H., L.O., S.P., S.J.J. and G.K. performed pathology review. E.B., W.D.T., L.O., A.N.K., Y.Y. and V.T. conducted further immunohistochemistry studies. F.L., L.F.-C., G.B., S.M., D.S., V.A., U.L., T.Z., S.A., M.H., J.W., P.N. and C.R. helped with logistics. S.J.J., N.S.J., K.-S.P., D.Y., J.Y., T.K., R.I., K.T., M.N., T.M., H.H., P.A.S., I.P., Y.C., A.S., C.-M.C., Y.-H.K., P.P.M., Y.Z., D.J., M.K., G.M.W., P.A.R., B.S., I.K., M.L., L.A.M., A.I.T., J.K.F., M.J., J.Kn., E.C.-V., L.R., U.P., O.-T.B., M.L.-I., E.T., J.Kö., M.Sc, J.B., M.Sa, M.S.-C., H.B.S., Y.Y., S.P., L.H., R.B. and E.B. contributed with murine and human tissue samples.

Affymetrix SNP 6.0, whole-genome, and transcriptome sequencing on human specimen have been deposited at the European Genome-phenome Archive under the accession code EGAS00001000925. Whole-exome and whole-genome sequencing data of murine SCLC tumors can be accessed through (<http://www.translational-genomics.uni-koeln.de/scientific-resources/>). Microarray data on mouse cell lines is accessible through Gene Expression Omnibus (GEO) accession number GSE69091.

The authors declare competing financial interests: details are available in the online version of the paper. Readers are welcome to comment on the online version of the paper.

treated by surgery and few specimens are available for genomic characterization. Previous studies applying mostly exome sequencing in a limited number of tumour specimens have revealed only a few recurrently mutated genes<sup>2,3</sup>.

We hypothesized that complex genomic rearrangements, which are undetectable by exome sequencing, might further contribute to the pathogenesis of SCLC and thus performed whole-genome sequencing of 110 human SCLC specimens (Supplementary Tables 1–4). One of the hallmarks of SCLC is the high frequency of mutations in *TP53* and *RB1* (refs 2–7). As mice lacking *Trp53* and *Rb1* in the lung develop SCLC<sup>8,9</sup>, we also sequenced 8 of these murine SCLC tumours in order to identify mutations that may promote SCLC development following loss of *Trp53* and *Rb1* and that may overlap with such accessory genes in human SCLC<sup>10</sup> (Supplementary Table 5).

## Samples and clinical data

We collected 152 fresh-frozen clinical tumour specimens obtained from patients diagnosed with stage I–IV SCLC under institutional review board approval (Supplementary Table 1 and Extended Data Fig. 1). The tumour samples were enriched for earlier stages and consisted of primary lung ( $n = 148$ ) and metastatic tumours ( $n = 4$ ) obtained by surgical resection ( $n = 132$ ), biopsy ( $n = 4$ ), pleural effusion ( $n = 1$ ) or through autopsy ( $n = 15$ ). We performed whole-genome sequencing on 110 of these tumours and their matched normal DNA. A total of 42 cases were excluded from the analysis because of insufficient quality or amount of DNA. Most of these 110 tumours were treatment-naive, with only five cases obtained at the time of relapse. We analysed transcriptome sequencing data in 71 of the 110 specimens that had undergone genome sequencing and in 10 additional specimens. Finally, 103 of the 110 genome-sequenced specimens and 39 additional specimens were analysed by Affymetrix 6.0 SNP arrays (Supplementary Table 1 and Extended Data Fig. 1). Eight tumour samples from preclinical SCLC mouse models were analysed by whole-exome sequencing ( $n = 6$ ) or whole-genome sequencing ( $n = 2$ ) (Supplementary Table 5).

## Recurrent somatic alterations in SCLC

SCLC genomes exhibited extremely high mutation rates<sup>2,3</sup> of 8.62 nonsynonymous mutations per million base pairs (Mb). C:G>A:T transversions were found in 28% of all mutations on average, a pattern indicative of heavy smoking (Fig. 1a and Supplementary Tables 2 and 3). The smoking history or clinical stage of the tumours did not correlate with the type and number of mutations (Extended Data Fig. 2). The median tumour content was 84% (Extended Data Fig. 3a and Supplementary Table 2). By contrast, murine SCLC tumours showed a low number of somatic alterations (on average 28.5 protein-altering mutations per sample on average)<sup>10</sup> (Supplementary Table 5).

In order to assess the amount of genetic heterogeneity of SCLC, we developed a subclonality score, which can be interpreted as the probability that an arbitrary point mutation in a randomly selected cancer cell is subclonal throughout the entire tumour (Methods). A reliable reconstruction of the subclonal architecture was possible in 55 of the cases (Extended Data Fig. 3b). A comparison to lung adenocarcinoma<sup>11</sup> indicated a

threefold lower subclonal diversity in SCLC ( $P = 0.00023$ , Extended Data Fig. 3b), pointing to pronounced differences in the evolution of SCLC and lung adenocarcinoma<sup>12,13</sup>. In contrast to adenocarcinomas, the level of heterogeneity in SCLC did not correlate with clinical stage (Extended Data Fig. 2b).

We applied several analytical filters in order to identify mutations with a probable relevance in SCLC biology in the context of the high load of background mutations<sup>2</sup> (Extended Data Fig. 1, Supplementary Table 6 and Methods). They include (I) analyses of significance determined by a comparison of observed and expected mutation rates followed by a correction for expressed genes, (II) a survey of regional clustering of mutations that may indicate mutational targeting of functionally enriched areas in tumour suppressors or proto-oncogenes, (III) determination of genes that are enriched for likely damaging mutations, (IV) a comparison with genes whose biological relevance has been established in SCLC mouse models, and (V) a listing of genes with a likely therapeutic relevance or that are otherwise frequently affected by genetic alterations in human cancers (that is, genes in the Cancer Gene Census<sup>14</sup> and COSMIC<sup>15</sup> database).

Among the significantly mutated genes (I), ( $q$ -values  $< 0.05$ , Methods) were *TP53* and *RB1* (refs 4–7), *KIAA1211* and *COL22A1*, as well as *RGS7* and *FPR1*, both of which are involved in G-protein-coupled receptor signalling (Fig. 1a).

Locally clustered mutations (II) are indicative of functional selection ( $P < 0.05$ , Supplementary Table 6, Methods)<sup>2,16</sup>. Of all genes, Fig. 1a lists those alterations that occurred in more than 8% of the samples, were otherwise affected by recurrent genomic rearrangements (Supplementary Table 4), or were mutated in *Trp53*<sup>-/-</sup>, *Rb1*<sup>-/-</sup> or *Trp53*<sup>-/-</sup>, *Rb1*<sup>-/-</sup>, *Rbl2*<sup>-/-</sup> SCLC tumours arising in mice<sup>8,9</sup> (Supplementary Table 5). Confirming previous results and our analytical strategy, the histone acetyltransferase genes *CREBBP* and *EP300* exhibited significantly clustered mutations and recurrent inactivating translocations (Fig. 1a and Extended Data Fig. 3c)<sup>2,3</sup>. Furthermore, significant mutation clustering occurred in genes with functional roles in the centrosome (*ASPM*, *ALMS1* and *PDE4DIP*), in the RNA-regulating gene *XRNI* and the tetraspanin gene *PTGFRN*; the latter was also mutated in murine SCLC (Extended Data Fig. 3c). The *TP53* homologue *TP73*, which was also affected by recurrent somatic rearrangements (Fig. 1a), also showed clustered mutations.

In the group of significantly damaged genes (III) we also found *TP53*, *RB1*, *CREBBP* and *COL22A1*, further highlighting their likely biological relevance in SCLC. Additional inactivating mutations occurred in *FMN2* and *NOTCH1* ( $P < 0.01$ ). *NOTCH* family genes were recurrently mutated with a pattern of frequent inactivation. *Notch3* was also mutated in a *Trp53*<sup>-/-</sup>, *Rb1*<sup>-/-</sup>, *Rbl2*<sup>-/-</sup> mouse tumour (Fig. 1a, Supplementary Table 5 and Methods).

Of the genes with an established role in murine SCLC (IV), we confirmed *PTEN*<sup>10,17</sup>. *RBL1* and *RBL2*, which are closely related to *RB1* (ref. 9), similarly exhibited inactivating translocations and mutations (Fig. 1a, Extended Data Fig. 3d and Supplementary Table 4). Mice with inactivation of *Trp53*, *Rb1* and *Rbl2* develop SCLC with shorter latency than

mice lacking *Trp53* and *Rb1* alone<sup>9</sup>, thus validating *RBL2* as another accessory tumour suppressor in SCLC.

Given the lack of therapeutic options in SCLC, we sought mutations that are known oncogenic drivers in other cancers and sometimes associated with response to targeted drugs (V)<sup>14,15</sup>. Of these, we found mutations in four tumours with a potential therapeutic implication, including mutations in *BRAF*<sup>18</sup>, *KIT*<sup>19,20</sup> and *PIK3CA*<sup>21</sup> (Extended Data Fig. 3e). Thus, genotyping of SCLC patients may reveal individual patients who might have a possible benefit from targeted therapeutic intervention.

Across these five categories, mutations in *CREBBP*, *EP300*, *TP73*, *RBL1*, *RBL2* and *NOTCH* family genes were largely mutually exclusive (Fig. 1a), suggesting that they may exert similar pro-tumorigenic functions in the development of SCLC. We did not observe significant correlations of global mutational signatures (for example, predominance of C:G>A:T transversions) with the mutational status of these genes (Extended Data Fig. 2b). Furthermore, mutations in these genes were not significantly associated with the total number of mutations, overall survival or other clinical parameters (Extended Data Fig. 4). The mutation status of 22 of the most frequently mutated genes was confirmed in an independent data set (Methods and Supplementary Table 7).

By analysing somatic copy number alterations, we confirmed previously known genomic losses within 3p pointing to focal events on 3p14.3–3p14.2 (harbouring *FHIT*<sup>5</sup>) and 3p12.3–3p12.2 (harbouring *ROBO1* (ref. 22)) (Fig. 1b, Extended Data Fig. 5a and Supplementary Table 8)<sup>5,22,23</sup>. *FHIT* expression was also reduced in cases with focal deletions (Extended Data Fig. 5b). In addition to homozygous losses in the *CDKN2A* locus (Extended Data Fig. 5c), amplification of the *MYC* family genes<sup>5</sup>, *MYCL1*, *MYCN* and *MYC*, as well as of the tyrosine kinase gene, *FGFR1* (refs 2, 24), and *IRS2* were recurrent genomic events (Fig. 1b). Focal *IRS2* amplifications occurred in 2% of the cases (Extended Data Fig. 5d, e).

## Universal inactivation of *TP53* and *RB1*

Inactivating mutations in *TP53* and *RB1* have been shown to affect up to 90% and up to 65% of SCLC, respectively<sup>2–7</sup>. By contrast, our whole-genome sequencing analyses revealed that both genes were altered in all but two cases that exhibited signs of chromothripsis<sup>25</sup> (Figs 1 and 2). *TP53* and *RB1* alterations were mostly inactivating (Supplementary Table 9 and Extended Data Fig. 6a). Missense mutations in *TP53* affected the functionally critical DNA binding domain, while *RB1* was frequently altered by complex genomic translocations. Many mutations in *RB1* occurred at exon–intron junctions, which caused protein-damaging splice events as confirmed by transcriptome sequencing (Extended Data Fig. 6b–e and Supplementary Tables 10 and 11). In the 108 tumours without chromothripsis, *TP53* and *RB1* had bi-allelic losses in 100% and 93% of the cases, respectively. Inactivating events included mutations, translocations, homozygous deletions, hemizygous losses, copy-neutral losses of heterozygosity (LOH) and LOH at higher ploidy (Fig. 2a, Extended Data Fig. 6 and Supplementary Table 9). Loss of *CDKN2A* occurred in cases with both bi-allelic inactivation of *TP53* and *RB1* and hemizygous loss of *RB1* (Fig. 2a). Although emerging data supports a continuum model of inactivation of tumour suppressors across multiple

cancers, *TP53* and *RBI* follow the classical discrete ‘two-hit paradigm’ pattern of Knudson-type tumour suppressors in SCLC<sup>26,27</sup>.

The two tumours affected by chromothripsis displayed a similar pattern of massive genomic rearrangements between chromosomes 3 and 11 (Fig. 2b and Extended Data Fig. 7a), but lacked shared fusion transcripts in the transcriptome sequencing data, suggesting that a particular fusion is not a common target (Extended Data Fig. 7b and Supplementary Table 12). Of the genes on chromosomes 3 and 11, *CCND1* (encoding cyclin D1) was retained (Fig. 2b and Extended Data Fig. 7a) resulting in significant *CCND1* overexpression in both tumours, but not in the other SCLC specimens (Fig. 2c, d and Supplementary Table 13). Immunohistochemistry confirmed high expression of cyclin D1 and a lack of nuclear Rb1 (Fig. 2e, Extended Data Fig. 7c). There were fewer proliferating Ki67-positive cells in these two cases. As cyclin D1 negatively regulates Rb family proteins<sup>28</sup>, these findings suggest that chromothripsis in cases with wild-type *RBI* may compensate for genomic loss of *RBI*.

Together, our findings provide evidence for the notion that complete genomic loss of both *TP53* and *RBI* function is obligatory in the pathogenesis of SCLC.

### Oncogenic genomic events affecting *TP73*

We analysed the genome sequencing data for the presence of clustered chromosomal breakpoints that may indicate a common biological target (Supplementary Table 14)<sup>29</sup> and found 5 major clusters affecting *RBI*, as well as regions on chromosomes 1, 3 (3q26), 6 (affecting *CDKALI*) and 22 (Fig. 3a). Breakpoints in chromosome 22 caused inactivating translocations of *TTC28* (Extended Data Fig. 8a)<sup>30</sup>. Breakpoints also clustered downstream of the L1HS retrotransposon in SCLC, further supporting a role for this element in cancer<sup>31,32</sup>, (Extended Data Fig. 8b). Breakpoints on chromosomes 3, 6 and 22 did not result in changes of expression of the affected genes (Supplementary Table 10).

By contrast, genomic breakpoints affecting chromosome 1 clustered precisely in the *TP73* locus in 7% of the cases ( $n = 8$ ). To our surprise, several breakpoints were recurrently located in introns 1, 2 and 3 of *TP73*. In two cases, breakpoints led to complex intrachromosomal rearrangements (Extended Data Fig. 8c and Supplementary Table 4), while the majority of breaks caused intragenic fusions and, thus, exclusion of either exon 2, or exons 2 and 3, which were all somatic (Fig. 3b and Extended Data Fig. 8d). Some rearrangements were copy-neutral events, while others occurred on the background of copy number gains (Extended Data Fig. 8e). One tumour sample revealed genomic exclusion of exon 10 (Fig. 3b). Analyses of transcriptome sequencing data confirmed that these rearrangements created the N-terminally truncated transcript variants p73<sub>ex2</sub> and p73<sub>ex2/3</sub>, as well as p73<sub>ex10</sub> (ref. 33) (Fig. 3c, d and Supplementary Table 11). Genomic validation and comparative profiling of transcript variants confirmed that p73<sub>ex2/3</sub> were not naturally occurring splice variants in SCLC and were only found in cases with genomic rearrangements (Fig. 3d and Supplementary Table 11). Some tumours expressed p73<sub>ex2</sub>, in which we failed to identify genomic rearrangements (Supplementary Table 11).

p73<sup>ex2</sup> and p73<sup>ex2/3</sup> lack a fully competent transactivation domain and are known tumour-derived variants of *TP73* (ref. 33). p73 with N-terminal truncations has dominant negative functions on wild-type p73 and p53, and is a confirmed oncogene *in vivo*<sup>34,35</sup>. p73<sup>ex10</sup> results in an early stop codon; C-terminal truncations can similarly exert dominant-negative effects on wild-type p73 (ref. 33).

Altogether, *TP73* was somatically altered by mutations and genomic rearrangements in 13% of the cases (Fig. 1 and Extended Data Fig. 8c–e). To our knowledge, this is the first study describing p73<sup>ex2/3</sup> variants to emerge as a consequence of precise genomic rearrangements.

## Tumour suppressive roles of Notch in SCLC

In an unsupervised hierarchical clustering analysis of transcriptome sequencing data (Methods), we observed two major clusters of SCLC tumours (Fig. 4a and Extended Data Fig. 9a). The majority (77%,  $n = 53/69$ ) of tumours exhibited high expression of the neuroendocrine markers *CHGA* (chromogranin A)<sup>1</sup> and *GRP* (gastrin releasing peptide)<sup>5</sup>, had high levels of *DLK1* (ref. 36), a non-canonical inhibitor of Notch signalling<sup>36</sup>, and *ASCL1*, a lineage oncogene of neuroendocrine cells whose expression is inhibited by active Notch signalling (Extended Data Fig. 9b)<sup>37,38</sup>. The remaining cases (23%,  $n = 16/69$ ) also expressed *SYP* (synaptophysin) or *NCAM1* (CD56), thus confirming that all tumours were of the typical SCLC subtype<sup>1</sup> (Extended Data Fig. 9c). Furthermore, no significant difference in the distribution of the major known SCLC mutations (for example, *TP53*, *RBI* or *CREBBP*) existed between the two transcriptional subtypes (Extended Data Fig. 9a). Thus, although all SCLC tumours shared the most frequent mutations as well as key neuroendocrine markers, the majority had a gene expression pattern suggestive of low Notch pathway activity (high levels of *ASCL1* and *DLK1*).

Mutations affected *NOTCH* family genes in both human and murine SCLC (Fig. 1a and Supplementary Table 5). The mutations did not cluster significantly in any individual domains, but frequent damaging mutations occurred in the extracellular domain (Fig. 4b and Extended Data Fig. 10a), suggesting that *NOTCH* may be a tumour suppressor in SCLC. Overall, the *NOTCH* family was affected by genomic alterations in 25% of human SCLC (Fig. 1).

Based on these observations and emerging evidence that activation of Notch signalling may inhibit the expansion of neuroendocrine tumour cells<sup>39,40</sup>, we examined the consequences of Notch pathway activation in *Trp53;Rb1;Rbl2* conditional triple-knockout (TKO) mice<sup>9</sup>. We crossed *Rosa26<sup>Lox-stop-Lox</sup>-Notch2<sup>N2ICD</sup>* (*LSL-N2ICD*) mice that conditionally express an activated form of Notch2 (Notch2 intracellular domain, N2ICD) to TKO mice and found a significant reduction in the number of tumours that arose in the presence of N2ICD ( $P < 0.001$ ; Fig. 4c). Similar results were obtained upon activation of Notch1, reflecting a general inhibition of SCLC initiation by active Notch signalling (Extended Data Fig. 10b). The recombination efficiency of an innocuous inducible reporter allele (*Rosa26<sup>mT/mG</sup>*) by Cre was much greater than that of the *N2ICD* allele, providing further support for a strong negative selection against active Notch signalling during SCLC development (Extended Data

Fig. 10c–e). Importantly, the inhibitory effects of Notch observed in the early stages of tumorigenesis correlated with a prolongation of survival of the mutant mice expressing N2ICD (Fig. 4d). Similarly, ectopic expression of N1ICD in both mouse and human SCLC cell lines significantly inhibited their growth (Fig. 4e and Extended Data Fig. 10f).

SCLC tumours in TKO mice showed typical patterns of neuroendocrine differentiation with high expression of synaptophysin and *Ascl1*. Consistent with the notion that Notch regulates neuroendocrine differentiation in SCLC, overexpression of N2ICD resulted in the upregulation of *Hes1* and abrogated expression of neuroendocrine markers (Extended Data Fig. 10g). Similarly, N1ICD induced upregulation of Notch targets (for example, *Hes1*, *Hey1*, *Hey2*) in murine SCLC cells (Fig. 4f, Extended Data Fig. 10h and Supplementary Table 15), as well as gene expression signatures consistent with cell cycle inhibition (Extended Data Fig. 10i). Ectopic expression of N1ICD inhibited cell cycle progression in murine and human SCLC cell lines (Extended Data Fig. 10j, k). This cell cycle inhibition is reminiscent of what has been seen in other contexts where Notch activation acts as a tumour suppressor<sup>41,42</sup>.

Altogether, our analyses involving genome and transcriptome sequencing of human and murine SCLC tumours, as well as studies in genetically manipulated mice, identify and validate Notch as a tumour suppressor and master regulator of neuroendocrine differentiation in SCLC.

## Discussion

Here we provide a comprehensive analysis of somatic genome alterations in SCLC, identifying many novel candidate genes, some of which may have therapeutic implications. Such alterations with immediate therapeutic consequences are rare but present in SCLC (for example, in *BRAF* or *KIT*), suggesting that individual patients may benefit from genotyping and subsequent targeted kinase inhibitor therapy. We further discovered recurrent expression of p73 *ex2/3* in SCLC and established a genetic mechanistic basis for this oncogenic variant. *TP73 ex2/3* has recently been demonstrated to function as an oncogene<sup>34,35</sup> and therapeutic options were identified to restrict p73-dependent tumour growth *in vivo*, including in *Trp53*-deficient tumours<sup>35</sup>. Given the frequent occurrence of genomic *TP73* alterations in SCLC, such approaches may potentially be promising in SCLC tumours. Our results furthermore provide proof for universal bi-allelic inactivation of *TP53* and *RBI*, thereby establishing these two genes as obligatory tumour suppressors in SCLC.

Our genomic analyses also identified *NOTCH* family genes as tumour suppressors and master regulators of neuroendocrine differentiation in SCLC, and we validated this finding *in vivo* in a pre-clinical mouse model of this disease. Our observations may thus provide an initial link between Notch and the neuroendocrine phenotype in SCLC. In contrast to the involvement of *TP73* and *NOTCH* family genes (Fig. 5), the functional role of most of the other newly discovered genes (for example, *KIAA1211*, *COL22A1*, *ASPM*, *PDE4DIP* or *PTGFRN*) is much less clear. Although our analytical filters support their involvement in the tumour pathogenesis, functional experiments will be required to clarify their biological role.



In summary, we have provided the first, to our knowledge, comprehensive genomic analysis of SCLC, implicating several previously unknown genes and biological processes (Fig. 5) in the pathogenesis of this disease as possible targets for more efficacious targeted therapeutic intervention against this deadly cancer.

**Online Content** Methods, along with any additional Extended Data display items and Source Data, are available in the online version of the paper; references unique to these sections appear only in the online paper.

## METHODS

### Human lung tumour specimens

The institutional review board of the University of Cologne approved this study. We collected and analysed fresh-frozen tumour samples of 152 SCLC patients, which were provided by multiple collaborating institutions as fresh-frozen tissue specimen, frozen sections or as genomic DNA extracted from fresh-frozen material (Extended Data Fig. 1). Human tumour samples were obtained from patients under IRB-approved protocols following written informed consent.

The fresh-frozen SCLC samples were primary tumours diagnosed as stage I–IV tumours, and snap-frozen after tissue sampling. All tumour samples were pathologically assessed to have a purity of at least 60% and no extensive signs of necrosis. Additionally, these tumour samples were reviewed by at least two independent expert pathologists and the diagnosis of SCLC was histomorphologically confirmed by H&E staining and immunohistochemistry for chromogranin A, synaptophysin, CD56 and Ki67. Matching normal material was provided in the form of EDTA-anticoagulated blood or adjacent non-tumorigenic lung tissue (Supplementary Table 1). The matched normal tissue was confirmed to be free of tumour contaminants by pathological assessment. Furthermore, tumour and matching normal material were confirmed to be acquired from the same patient by short tandem repeat (STR) analysis conducted at the Institute of Legal Medicine at the University of Cologne (Germany), or confirmed by subsequent SNP 6.0 array and sequencing analyses. Patient material was stored at  $-80^{\circ}\text{C}$ .

Whole-genome sequencing was performed on 110 SCLC fresh-frozen tumour samples and matched normal material. Additionally, we analysed RNA-seq data of 81 SCLC primary tumours (Extended Data Fig. 1 and Supplementary Table 1), among which 20 cases were previously published<sup>2,43</sup>. Furthermore, we studied the copy-number alterations of a total of 142 fresh-frozen tumour specimen by Affymetrix SNP 6.0, among which 74 cases were described before<sup>44</sup>.

Clinical correlation studies were performed with the study cohort of 110 SCLC patients considering age of diagnosis, gender, tumour stage, surgery, treatment with chemotherapeutics, smoking status, smoking history and overall survival (Extended Data Figs 2 and 4 and Supplementary Table 1). The median follow-up time for this cohort of 110 SCLC patients was 69 months, and 31% of the patients were alive at the time of last follow-up (Extended Data Fig. 2a and Supplementary Table 1). Smoking status was available for

88% ( $n = 97$ ) of the patients; 63% ( $n = 69$ ) reported a smoking history amounting to a median of 45 pack-years. Patients with a known smoking history were further subcategorized to heavy smokers (>30 pack-years), average smokers (10–30 pack-years) and light/never smokers (<10 pack-years).

Primary findings on somatic mutations were further studied in a second independent cohort consisting of 112 SCLC cases. This validation cohort refers to the exome sequencing data of 28 fresh-frozen SCLC primary tumours and 9 SCLC cell lines<sup>2,3</sup> which were re-analysed in this present study (Supplementary Table 7). Additionally, we performed targeted sequencing on 8 fresh-frozen and 67 formalin fixed paraffin embedded (FFPE) samples from SCLC patients (Supplementary Table 1).

### Mouse SCLC models and tumour samples

Mice were maintained according to practices prescribed by the NIH (Bethesda, MD) at Stanford's Research Animal Facility, accredited by the Association for the Assessment and Accreditation of Laboratory Animal Care (AAALAC). The *Trp53;Rb1* double-knockout (DKO) and the *Trp53;Rb1;Rbl2* triple-knockout (TKO) mouse models for SCLC have been previously described<sup>8,9</sup>. Mice were bred onto a mixed genetic background composed of C57BL/6, 129/SvJ and 129/SvOla. SCLC tumours were induced in 8-week-old mice by intratracheal instillation with  $4 \times 10^7$  plaque-forming units (p.f.u.) of adenovirus expressing the Cre recombinase (Ad-Cre, Baylor College of Medicine, Houston, TX).

Whole-genome and whole-exome sequencing was performed on 8 murine SCLC tumours isolated from DKO and TKO mice. Primary tumours and metastases were dissected, snap-frozen, and stored at  $-80^\circ\text{C}$ . The material was pathologically confirmed to have a tumour content of at least 90%. The respective tail tissue was similarly processed and served as a normal reference for 6 tumour samples (Supplementary Table 5). Average mutation rates were calculated for cases with tumour-normal pairs ( $n = 6$ ).

SCLC tumours expressing the activated intracellular domain (ICD) of Notch1 (Notch1 ICD, N1ICD) and Notch2 (Notch2 ICD, N2ICD) were analysed in mouse models. *Rosa26<sup>Lox-stop-Lox-Notch1ICD</sup>* (*LSL-N1ICD*) or *Rosa26<sup>Lox-stop-Lox-Notch2ICD</sup>* (*LSL-N2ICD*) mice were obtained from Spyros Artavanis-Tsakonas and Exelixis. These mice are similar to recently published *Rosa26<sup>+/LSL-Notch3ICD</sup>* mice<sup>45</sup>. *Rosa26<sup>+/LSL-N1ICD</sup>* or *Rosa26<sup>+/LSL-N2ICD</sup>* mice were crossed with TKO mice. TKO or TKO;*Rosa26<sup>+/LSL-NICD</sup>* mice were infected with Ad-Cre at week 8 and their survival was monitored. The sample size was chosen based on our experience with these mouse models of cancer (a minimum of 3–5 mice usually ensures statistical significance if the phenotypes are robust). We used both males and females in these experiments, littermates served as controls. Tumour initiation was studied three months after Ad-Cre instillation. The lungs were fixed and tumour burden was quantified using ImageJ software. To control for the efficiency of deletion, we also crossed TKO mice to *Rosa26<sup>mT/mG</sup>* reporter mice<sup>46</sup>. For all tumour quantifications, the investigator was blinded to the genotypes when the H&E pictures were taken, and during the quantification of tumour number and area. No samples or animals were excluded from the analyses, and no randomization was performed.

## DNA and RNA extractions

Nucleic acids were extracted from fresh-frozen tissue specimen which were processed to 15–30 sections each of 20  $\mu\text{m}$  thickness at a cryostat maintaining a temperature of  $-20\text{ }^{\circ}\text{C}$  (Leica). In the case of FFPE samples, 6–10 sections of 10  $\mu\text{m}$  thickness were prepared.

DNA was extracted from fresh-frozen tissues, EDTA blood, or FFPE samples using the Genra Puregene DNA extraction kit (Qiagen) following the protocol of the manufacturer. DNA isolates were hydrated in TE-buffer and confirmed to be of high molecular weight ( $>10\text{ kb}$ ) by agarose gel electrophoresis. Genomic DNA from fresh-frozen samples with evident signs of degradation were excluded from further sequencing studies.

For RNA extractions, tissue sections were first lysed and homogenized with the Tissue Lyzer (Qiagen). Subsequent RNA extractions were performed with the Qiagen RNAeasy Mini Kit according to the instructions of the manufacturer. The RNA quality was assessed at the Bioanalyzer 2100 DNA Chip 7500 (Agilent Technologies) and samples with a RNA integrity number (RIN) of over 7 were further analysed by RNA-seq.

## Next-generation sequencing

All sequencing reactions were performed on an Illumina HiSeq 2000 instrument (Illumina, San Diego, CA, USA).

**Whole-genome sequencing**—Whole-genome sequencing was performed with DNA extracted from fresh-frozen tumour and normal material. Short insert DNA libraries were prepared with the TruSeq DNA PCRfree sample preparation kit (Illumina) for paired-end sequencing at a minimum read length of  $2 \times 100\text{ bp}$ . Human DNA libraries were sequenced with the aim to obtain a coverage of minimum  $30\times$  for both tumour and matched normal. Murine DNA libraries of tumour and matched normal were both sequenced to a coverage of  $25\times$ .

**Whole-exome sequencing**—Whole-exome sequencing was performed on fresh-frozen tissue specimen from mice. The enrichment for the exome was performed with the SureSelectXT Mouse All Exon kit (Agilent) following the protocol of the manufacturer. The exon-enriched libraries were subjected to paired-end sequencing with a read-length of  $2 \times 100\text{ bp}$ . Both tumour and normal material was sequenced to a minimum coverage of  $60\times$ .

**RNA-sequencing**—RNA-sequencing (RNA-seq) was performed with RNA extracted from fresh-frozen human tumour tissue samples. cDNA libraries were prepared from poly(A) selected RNA applying the Illumina TruSeq protocol for mRNA. The libraries were then sequenced with a  $2 \times 100\text{ bp}$  paired-end protocol to a minimum mean coverage of  $30\times$  of the annotated transcriptome.

**Targeted enrichment sequencing**—Targeted enrichment sequencing was performed on human FFPE and fresh-frozen tumour and normal specimen for the purpose of validating genome alterations in an independent cohort. The custom probe design was constructed with SureDesign (Agilent Technologies) enriching for the exons of 22 genes of interest. DNA libraries were prepared with the SureSelect XT reagent kit according to the manufacturer's

instructions (Agilent Technologies) and sequenced with the aim to obtain a coverage of at least 200×.

### Dideoxy sequencing for validation of somatic alterations

If available, RNA-seq or exome sequencing was used to validate somatic mutations determined by genome sequencing. Alternatively, dideoxynucleotide chain termination sequencing (Sanger sequencing) was performed to validate mutations, genomic rearrangements, and chimaeric fusion transcripts. Primer pairs were designed to amplify the target region encompassing the somatic alteration. The PCR reactions were performed either with genomic DNA, whole-genome amplified DNA or cDNA. The amplified products were subjected to Sanger sequencing and the respective electropherogram was analysed with Geneious (<http://www.geneious.com>).

### Copy number analysis by Affymetrix SNP 6.0 arrays

Human DNA extracted from fresh-frozen tumour specimen was hybridized to Affymetrix Genome-Wide Human SNP array 6.0 following the manufacturer's instructions. The signal intensities were processed to analyse for chromosomal gene copy number data. Raw copy number signals and segmented copy number data were computed following the procedure described previously<sup>24</sup>.

The raw, unsegmented copy number signals were used to analyse for significant copy number alterations applying the method CGARS<sup>47</sup>. Significant amplifications were determined with the upper quantiles 0.25, 0.15, 0.1, and 0.05; deletions were computed in reference to the 0.25 lower quantile. The significance threshold was set at a *q*-value of 0.05 (Supplementary Table 8).

### Data processing

The raw sequencing reads of human and mouse samples acquired from whole-genome, whole-exome or targeted enrichment sequencing were aligned to the respective human (NCBI37/hg19) or mouse reference genome (NCBI37/mm9). The alignment was performed with the BWA aligner<sup>48</sup> (version 0.6.1-r104). Concordant read-pairs were identified as potential PCR duplicates and were subsequently masked in the alignment file. The quality of the sequencing data was determined and is summarized in Supplementary Table 2.

The whole-genome sequencing data of human samples was analysed for purity and ploidy with methods previously described<sup>2</sup> (Extended Data Fig. 3a and Supplementary Table 2).

Somatic mutations and copy number alterations were determined with our in-house analysis pipeline<sup>2,49</sup>. The calling of somatic mutations in human samples was further improved by filtering the identified variant against the sequencing data of more than 500 normal samples (including exome or genome sequencing data). Additionally, an estimation of human DNA library contamination was implemented to enhance sensitivity and specificity of mutation calling.

## Analysis of significantly mutated and biologically relevant genes

The significance of recurrently mutated genes was analysed for the whole-genome sequencing data set of 110 human SCLC samples (Extended Data Fig. 1a).

As previously described<sup>2</sup>, the analysis first estimated the background mutation rate for each gene and corrected for its expression by referring to the RNA-seq data of 81 human primary SCLC tumour specimen analysed in the present study. The analysis included those genes which had FPKM values (fragments per kilobase of exon per million fragments mapped) of over 1 in at least 50 samples. Following corrections for the occurrence of synonymous mutations, significantly mutated genes were determined with  $q$ -values of  $< 0.05$  (Fig. 1a, Extended Data Fig. 1a (filter I) and Supplementary Table 6).

Mutations that cluster within a gene are defined as a mutational hotspot similar to our previously described method<sup>2</sup>. Here we used an analytical derivation of the test statistics, rather than resampling. To this end, the mutated positions are rescaled to lie within zero and one (using the protein length). Under the null hypothesis of having no particular mutational hotspot, the rescaled mutated positions are uniformly distributed between zero and one, thus its expected value is 0.5. We therefore chose the final statistics as sum over the modulus of the rescaled position minus 0.5. This allows that the distribution under the null hypothesis can analytically be calculated; hence, also the  $P$  values. The analysis was calculated for genes that were significantly mutated in at least 5% of the samples with  $P < 0.05$  (Fig. 1a, Extended Data Fig. 1a (filter II) and Supplementary Table 6). In order to further filter for the genes of relevance, subsequent analysis considered those genes recurrently mutated in more than 8% ( $n > 8$ ) samples. The called genes were scored for their relevance by either analysing recurrent translocations affecting these genes (Supplementary Table 4) or by comparison with the mouse SCLC mutation data to identify alterations in common genes (Supplementary Table 5).

Additionally, recurrent mutations were scored for the accumulation of clearly damaging mutations in which splice site, frameshift and nonsense mutations were considered as damaging mutations. Here, we restricted the aforementioned significance analysis only to this class of mutations (by restricting the background mutation rate only to damaging mutations) and determined significance at  $P < 0.01$  (Fig. 1a, Extended Data Fig. 1a (filter III) and Supplementary Table 6).

Genetic alterations were further scored for their relevance by comparison with genes that were functionally characterized in genetically engineered mouse models (GEMM) for SCLC<sup>9,10</sup>, or by comparing somatic mutations in SCLC with mutations in other cancer types reported in the Cancer Gene Census<sup>14</sup> and in COSMIC (catalogue of somatic mutations in cancer)<sup>15</sup> (Fig. 1a, Extended Data Fig. 1a (filter IV and V) and Supplementary Table 6). Additionally, the sequencing data of mouse SCLC specimen was used to identify alterations in common genes.

## Analysis of subclonal architecture

To determine the subclonal architecture from genome sequencing data, we first computed the cancer cell fraction (CCF; that is, the fraction of cancer cells carrying a particular

mutation) of each called somatic point mutation. To this end, we first estimated the tumour purity, absolute copy numbers, and subclonal copy number changes using our previously described method<sup>2</sup> and computed for each mutation the expected allelic fraction under clonality assumption. The quotient between the observed allelic fraction of a mutation with its corresponding expected allelic fraction then yields the CCF. To assess the clonal and subclonal populations we next identified distinct clusters in the CCF profile and assigned each mutation to the cluster of highest probability. In order to provide a measure for the subclonal architecture, we proposed the following score:

$$\text{Subclonality score} = \frac{\sum_{i=1}^{nc} \phi_i m_i}{\sum_{i=0}^{nc} \phi_i m_i}$$

where  $i = 0$  represents the clonal population,  $i = 1, \dots, nc$  the subclonal populations;  $\phi_i$  is the CCF of each population (thus,  $\phi_0 \approx 1$ ), and  $m_i$  is the number of mutations assigned to cluster  $i$ . This subclonality score can be interpreted as the probability that a randomly selected mutation present in a single cancer cell is subclonal throughout the entire tumour.

As a low sequencing depth limits the robust identification of subclonal populations, we computed the genome-wide average contribution of a single mutated read to the CCF. For a given tumour purity  $p$ , average ploidy  $\pi$ , and mean coverage  $c$ , this measure is given by:

$$\text{Average increase of CCF per read} = \frac{2(1-p) + p\pi}{pc}$$

The smaller the average increase of CCF per read, the more accurately the subclonality score can be determined since more subclonal mutations can be called from the sequencing data. In this study, the most limiting factor for assessing the subclonal diversity is the relatively low sequencing depth (35× on average). We therefore used this measure to select the samples that are suitable for a reliable calculation of the subclonality score. To this end, we systematically scanned from the average increase of CCF per read from large to small values and detected the point of the most prominent change in the distribution of the subclonality score (Supplementary Table 2).

### Analysis of genomic breakpoints

Genomic rearrangements were reconstructed from the whole-genome sequencing data of 110 human SCLC samples following the procedure as previously described<sup>2,49</sup>. The genomic rearrangements called from each tumour sample were further filtered against a library of 110 normal genomes to thus minimize the detection of false-positive rearrangements. Genomic breakpoints of SCLC candidate driver genes are listed in Supplementary Table 4.

The genomic breakpoints of all samples were mapped to their chromosomal locations and recurrent breakpoints clustering within the range of 100 kb were identified with a similar approach described previously<sup>29</sup> (Supplementary Table 14).

## Processing and analysis of RNA-seq data

RNA-seq data was processed as previously described<sup>2,49</sup> to detect chimaeric transcripts and to determine the transcriptional abundance of annotated transcript variants. In brief, paired-end RNA-seq reads were mapped to the human reference genome (NCBI37/hg19) using GSNAP. Potential chimaeric fusion transcripts were identified by discordant read pairs and by individual reads mapping to distinct chromosomal locations. The sequence context of rearranged transcripts was reconstructed around the identified breakpoint and the assembled fusion transcript was then aligned to the human reference genome to determine the genes involved in the fusion.

Cufflinks was used to determine the expression levels of annotated transcripts referring to unique paired-end reads which align within the expected mapping distance. The expression is represented as FPKM values (Supplementary Table 10).

## Transcript splicing analysis

RNA-seq data was used to analyse for alternative splicing events of *TP53*, *RB1* and *TP73* caused by exon skipping or intron retention (Supplementary Table 11). The paired-end reads were mapped to the reference genome (hg19) using STAR mapper. In reference to the annotation of exon junctions provided from UCSC genes and RefSeq the following parameters were applied: ref 1, options:–alignIntronMin 20,–alignIntronMax 500000,–outFilterMismatchNmax 10, and–chimSegmentMin 10. The coordinates of reads potentially crossing exon boundaries were derived from the respective “SJ.out.tab” file and compared to the reference annotation. Subsequently, junction read counts were assigned to all transcripts containing the respective exon combination. If the exon combination is novel, read counts were assigned to those transcripts sharing one of the exons contributing to the novel junction. For subsequent analyses the transcript with the highest number of junction read counts was used as a reference. Additionally, for exon combinations unique to alternative transcripts a representative transcript was selected based on total read counts. The read counts of each exon junction were normalized to the reads per kilobase per million mapped reads (RPKM) per sample. These expression values were further normalized per gene by dividing by the average expression of the exons of the reference transcript. Potentially novel exon combinations were rejected if the average expression of the reference transcript was <2 or if their expression were <10% of the reference transcript expression.

## Differential expression for outlier studies

Differential gene expression analysis was performed to compare the transcriptional profile of the two chromothripsis cases (S02297 and S02353) with other non-chromothripsis SCLC cases and to thus identify outliers in the expression profile. The expression was analysed by computing *z*-scores for all samples referring to the RPKM values and using the R function ‘scale’; RPKM values smaller than 3 were set to 0. In order to prioritize for genes differentially expressed in the two samples S02297 and S02353, genes were ranked by their respective *z*-scores. Statistical testing was performed for genes on Chr 3 and Chr 11, respectively. The *P* values were then combined from the two samples using Fisher’s method and corrected for multiple hypothesis testing by using the Benjamini–Hochberg approach.

Differentially expressed genes with a  $P < 0.05$  and  $q$ -values  $< 0.01$  are provided in Supplementary Table 13.

### Unsupervised expression clustering

Unsupervised clustering was performed with RNA-seq data of 69 SCLC cases for which matching genome sequencing data was available (Fig. 4a and Extended Data Fig. 9a). As expression values are approximately following log-normal distribution, we transformed raw FPKM of each transcript by  $\log_2(1 + \text{FPKM})$ . The resulting expression scores were then searched for a high and low expression characteristic over the samples. To this end, expression scores of each transcript were divided into two states using  $k$ -means clustering. To prevent an accumulation of artificial signals, only transcripts with at least 6 samples in each state and having a state-averaged fold change larger than 3 are considered for further analysis. A  $t$ -test is then computed between the two states of the remaining transcripts and corrected for multiple hypothesis testing using the false discovery rate framework. Next, transcripts having a  $q$ -value smaller than 0.01 were selected. For genes with multiple transcript variants, the transcript with the smallest  $q$ -value was chosen as representative transcript. Then, invariant genes were removed (having a standard deviation across all samples  $< 2$ ). To improve clustering, only genes that share a similar pattern of the two states in at least 6 other genes are finally selected (using a Fisher's exact test with a significance threshold of  $10^{-6}$ ). Using the determined list of transcripts/genes, hierarchical clustering (Euclidean distance, complete linkage) was performed on the raw expression scores.

### *IRS2* amplification FISH assay

A fluorescence *in situ* hybridization (FISH) assay was used to detect and confirm *IRS2* amplifications at the chromosomal level. We performed a signal detection approach, with two probes on chromosome 13: the reference probe is located on the centromeric region of chromosome 13 (Empire Genomics, Art.Nr.: CHR13-10-GR) and was labelled with green 5-fluorescein dUTP to produce a green signal; the target probe is located on the *IRS2* locus spanning 13q33.3–34 and was labelled with biotin to produce a red signal using the CTD-2083015 BAC clone (Life Technologies, CA, USA). As previously described<sup>24</sup>, slides of FFPE and fresh-frozen samples of tumour tissues were prepared, stained and analysed at a fluorescence microscope (Zeiss, Jena, Germany) with a 63 $\times$  oil immersion objective. A non-amplified nucleus showed one red target signal for every corresponding green reference signal, with a red/green ratio of 1:1 (Extended Data Fig. 5e). High-level amplifications were determined for at least 10 red signals. In some cases the red signals were observed as clusters in the cells. At least 100 nuclei per case were evaluated.

### Immunohistochemistry

Immunohistochemistry was performed on human tumour FFPE samples to analyse for the protein expression of Rb, cyclin D1, p53, p14 (ARF), and p16. The staining was performed with the BenchMark XT automated immunohistochemistry slide staining system (Roche). The following antibodies and conditions were applied: Rb (C-15) rabbit polyclonal (Santa Cruz; FFPE retrieving conditions: 60 min at pH 6.0; dilution: 1:500; incubation: 60 min, 37 °C); Cyclin D1 clone SP4 rabbit monoclonal (Microm France; FFPE retrieving conditions: 90 min at pH 8.4; dilution: 1:200; incubation: 60 min, 37 °C); p53 clone DO7



mouse monoclonal (Dako; FFPE retrieving conditions: 60 min at pH 8.4; dilution: 1:25; incubation: 60 min, 37 °C); p14ARF clone 4C6/4 mouse monoclonal (Cell Signaling; FFPE retrieving conditions: 60 min, water-bath 98 °C at pH 6.0; manual immunohistochemistry staining with Novolink Max polymer detection system (Leica); dilution: 1:4,000; incubation: overnight, 4 °C); p16 INK4 Ab-7 clone PO7 mouse monoclonal (Neomarkers; FFPE retrieving conditions: 60 min at pH 8.4; dilution: 1:800; incubation: 60 min, room temperature).

For immunohistochemistry on mouse tumour FFPE samples, sections were permeabilized for antigen retrieval by microwaving in a citrate-based antigen unmasking solution (Vector Laboratories). The following antibodies were used: GFP (Invitrogen; A11122; dilution: 1:400), RFP/Tomato (Rockland Immunochemicals; 600-401-379; dilution: 1:500), Notch2 (Cell Signaling; 5732; dilution: 1:200), Hes1 (Cell Signaling; 11988; dilution: 1:200), Ascl1 (BD Biosciences; 556604; dilution: 1:200) and Synaptophysin (NeuroMics; MO20000; dilution: 1:200). Sections were developed with DAB (Vector Labs) and counterstained with haematoxylin.

### Cell lines, tissue culture and transfections

Mouse (KP1) and human (NJH29, NCI-H82 and NCI-H187) SCLC cell lines were grown in RPMI-1640 media supplemented with 10% bovine growth serum (BGS) (Fisher Scientific) and penicillin-streptomycin-glutamine (Gibco), as described before<sup>50</sup>. KP1, NJH29 were generated at Stanford. NCI-H82 and NCI-H187 were purchased from ATCC. These cells grow as suspension spheres or aggregates in culture. All cell lines were maintained at 37 °C in a humidified chamber with 5% CO<sub>2</sub>. All cell lines tested negative for mycoplasma infection. For transient expression of Notch ICD, cells were trypsinized and transfected with either MigR1-IRES-GFP (Ctrl) or MigR1-Notch1-ICD-IRES-GFP (NICD) using Lipofectamine 2000 (Life Technologies). The plasmids were gifts from W.S. Pear (University of Pennsylvania, Philadelphia). Then 48 h after transfection, cells were trypsinized and resuspended in phosphate-buffered saline (PBS) containing 10% BGS and 1 µg ml<sup>-1</sup> 7-aminoactinomycin D (Life Technologies) that labels dead cells. Live GFP<sup>+</sup> cells were then sorted for subsequent experiments using a BD FACSAria fluorescence-activated cell sorting (FACS) machine.

### Gene expression and microarray analysis

Gene expression and microarray analyses were performed with the mouse cell line KP1 transiently transfected with MigR1-IRES-GFP (Ctrl) or MigR1-Notch1-ICD-IRES-GFP (NICD).

Then  $1 \times 10^5$  GFP<sup>+</sup> cells were sorted and the RNA isolated using the AllPrep DNA/RNA micro kit (Qiagen). RNA quality assessment using the 2100 Bioanalyzer (Agilent) as well as the subsequent cDNA preparation steps for microarray analysis were performed at the Stanford Protein and Nucleic Acid (PAN) facility using the GeneChip Mouse Gene 2.0 ST Array (Affymetrix). For gene expression analysis, the Robust Multichip Average (RMA) Express 1.0.4 program was used for background adjustment and quantile RMA normalization of the 41,345 probe sets encoding mouse genome transcripts. Linear models

for microarray data (LIMMA) was used to compare Ctrl or N1ICD samples on RMA normalized signal intensities. Only genes with an adjusted *P* value of 0.05 or less were considered as significantly differentially expressed. A total of 769 probes accounting for 760 genes were significant, and the expression levels of these genes were represented as a heatmap using the heatmap.2 function in R. The analysis was performed in triplicates. A list of significant genes is provided in Supplementary Table 15.

### **MTT cell viability assay**

Sorted GFP<sup>+</sup> cells were seeded at  $1 \times 10^4$  per well in 96-well plates. The MTT reagents (Roche) were added on days 0, 2, 4, 6 and 8 for mouse SCLC cell lines or on days 0, 2, 4 and 6 for the human SCLC cell line NJH29. The absorbance wavelength was 570 nm with a reference wavelength of 650 nm.

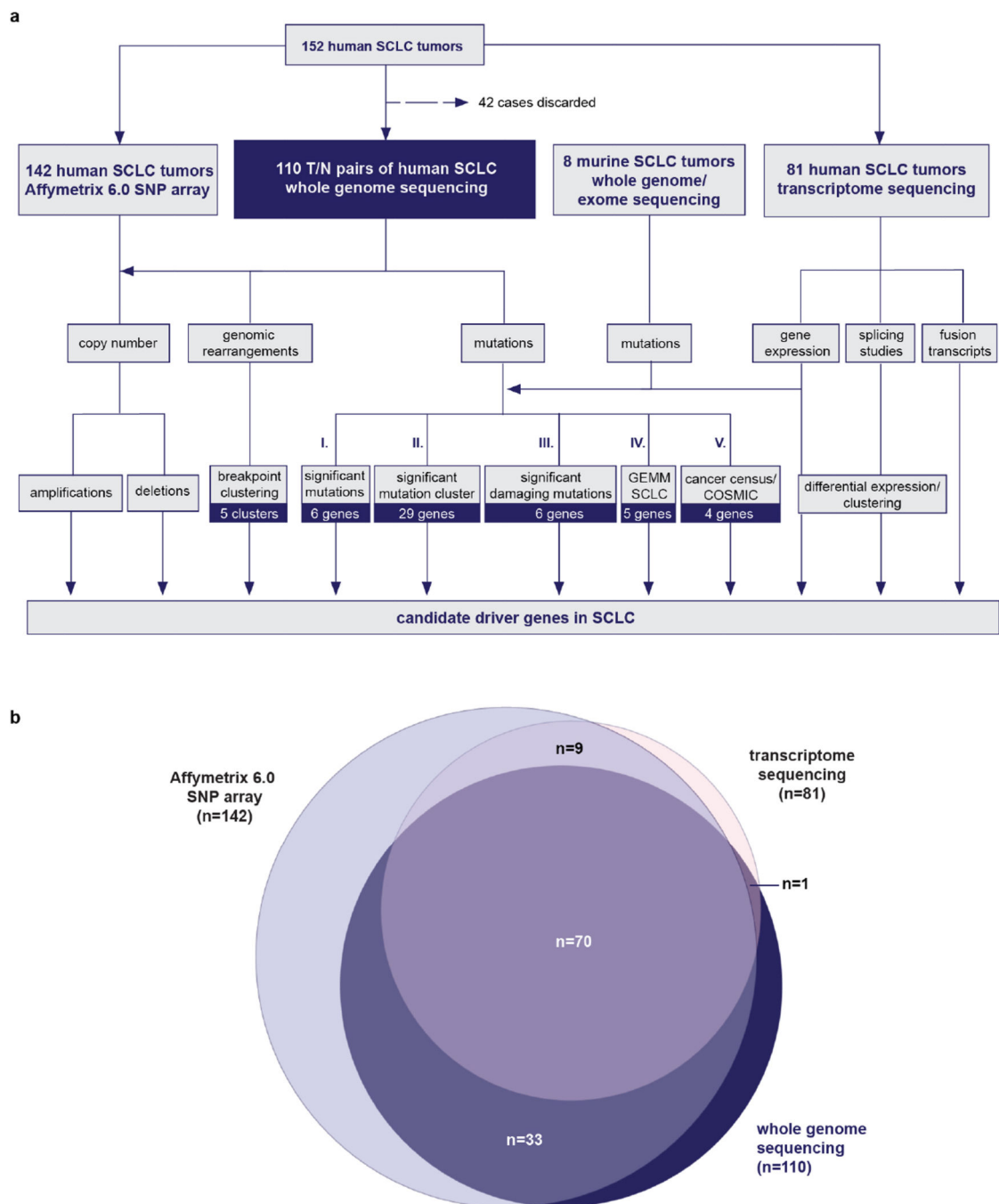
### **EdU incorporation assay**

Transfected cells were treated with 10  $\mu$ M EdU (5-ethynyl-2'-deoxyuridine) (Life Technologies) for 3 h before trypsinization for FACS.  $1 \times 10^5$  live, GFP<sup>+</sup> cells were sorted and labelled with EdU using the Click-iT EdU Pacific Blue flow cytometry assay kit (Life Technologies). Cells were then run through the BD FACS Aria to analyse for per cent EdU incorporation.

### **Data reporting**

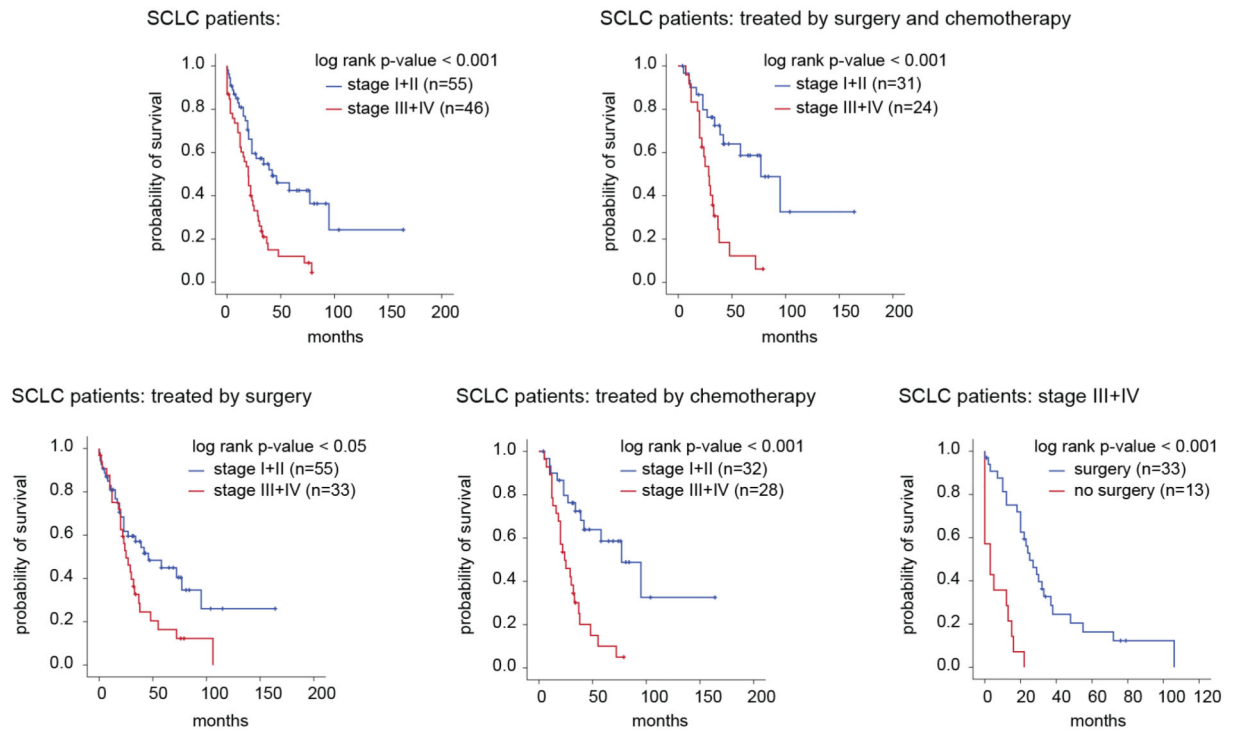
No statistical methods were used to predetermine sample size.

## Extended Data

**Extended Data Figure 1. Genomic analyses in SCLC tumours**

**a**, Schematic detailing the genomic study and number of samples as well as various steps of analyses for the identification of candidate genes in SCLC. **b**, Illustration of the number of samples analysed in this study.

a



b

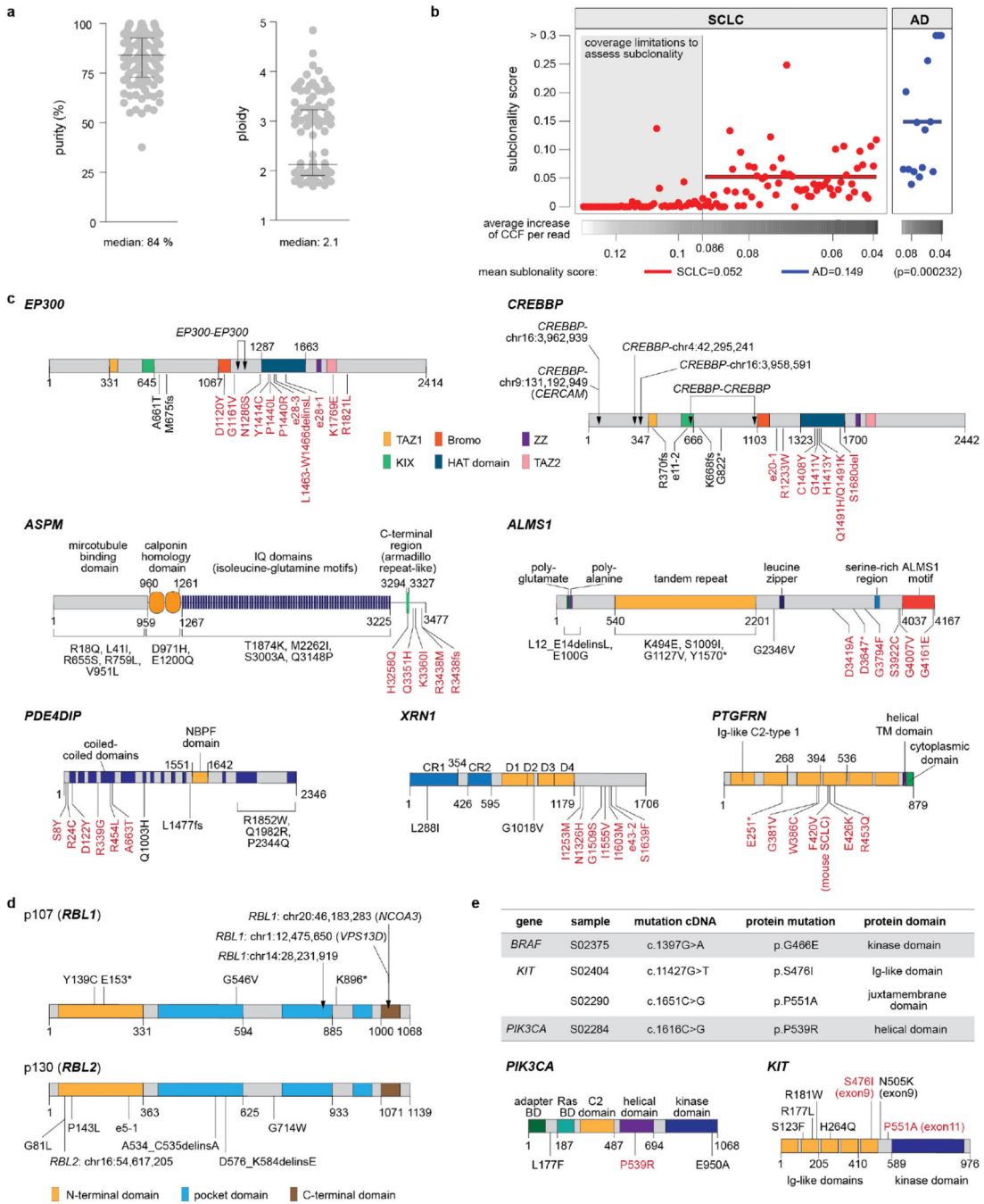
item tested*	clinical stage (early: stage I and II, late: stage III and IV)
non-synonymous mutations (n=109)	p-value: 0.855
C:G>A:T transversion rate (n=109)	p-value: 0.908
subclonality (n=55)	p-value: 0.723

item tested*	smoking category based on pack-years (light/never, average, heavy smoker)
non-synonymous mutations (n=69)	p-value: 0.164
C:G>A:T transversion rate (n=69)	p-value: 0.737

\* Kruskal-Wallis test

**Extended Data Figure 2. Clinical molecular-correlation analyses**

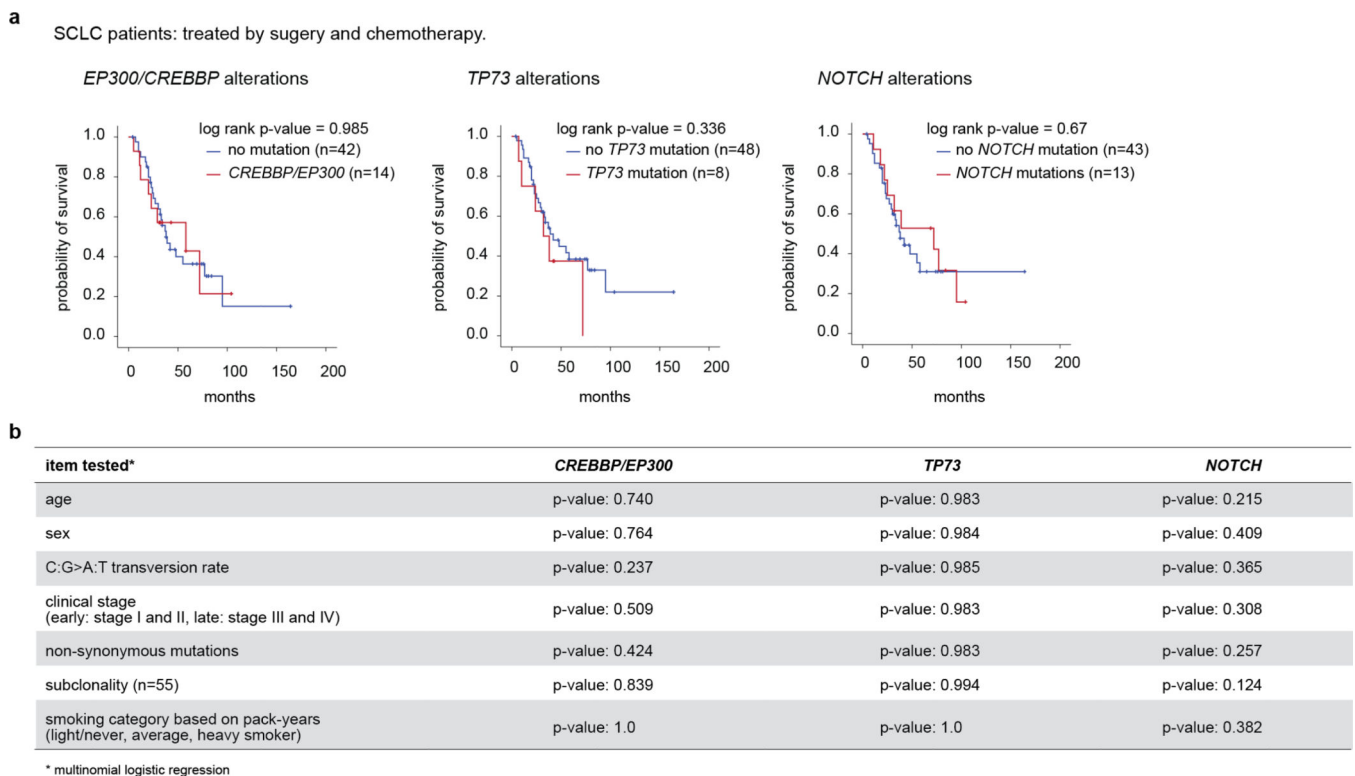
**a**, Survival analysis of SCLC patients based on clinical stage and treatment options (surgery and/or chemotherapy). Statistical significance was determined by log-rank test. **b**, Analyses of clinical stage and smoking status and the respective effect on number and type of mutations, as well as mutational subclonality in tumours. Statistical significance was determined by Kruskal–Wallis analysis.



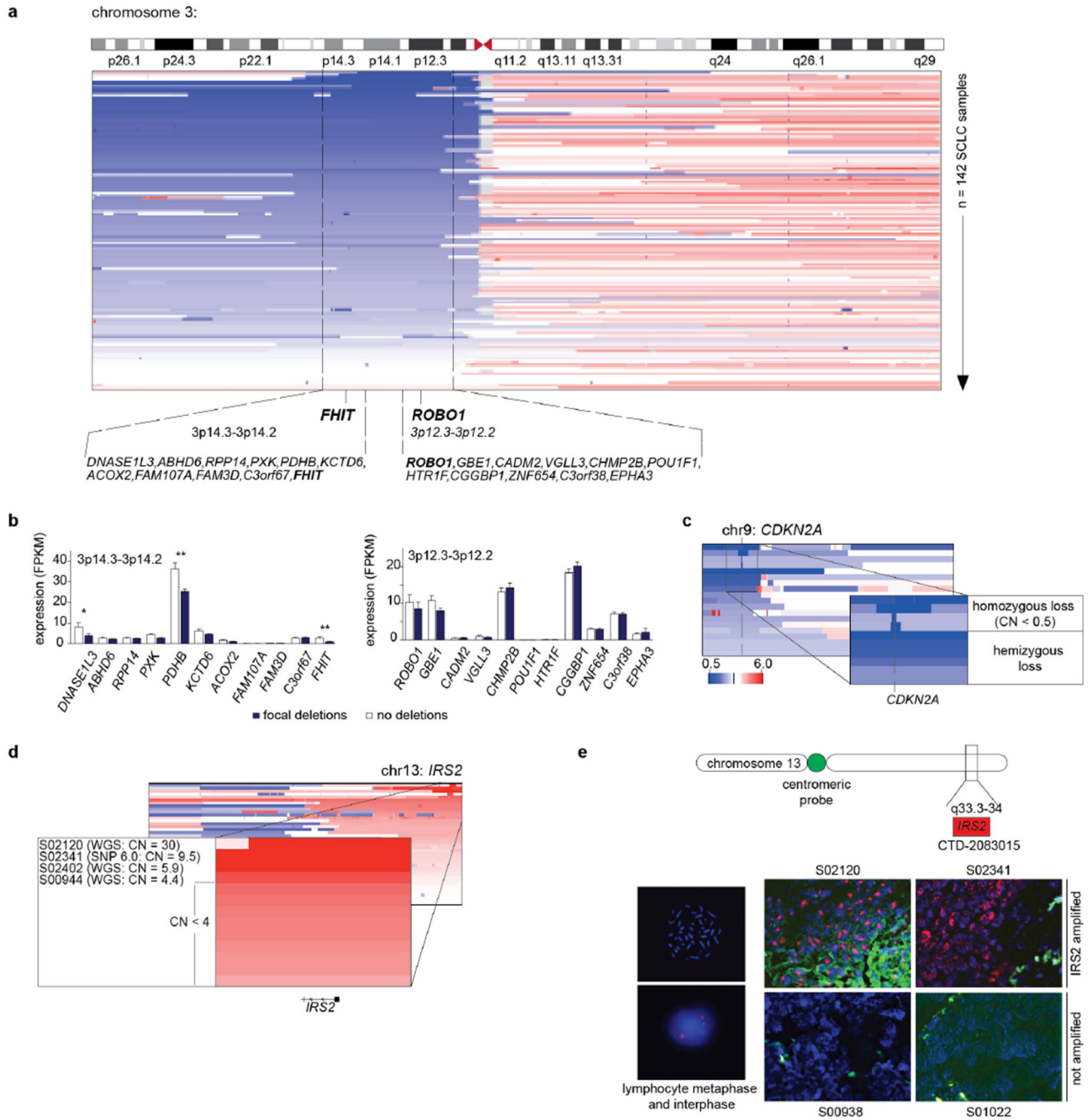
**Extended Data Figure 3. Genomic characterization of SCLC tumours**

**a**, Purity and ploidy determined in SCLC tumours by whole-genome sequencing presented as dot density plots showing median and the interquartile range (IQR) **b**, Subclonal architecture of SCLC in comparison to lung adenocarcinoma (AD). Whole-genome sequencing data of SCLC and of adenocarcinoma ( $n = 15$ )<sup>11</sup> was analysed for the presence of subclonal populations using clustering of the derived cancer cell fraction (CCF) of all single nucleotide mutations. To compare the emerging subclonal structure, we derived a subclonality score that takes into account the CCF of each subpopulation as well as its

mutational burden (see Methods). In order to prevent the low sequencing coverage ( $35 \times$  for SCLC and  $63 \times$  for AD) from causing a systematic underrepresentation of the subclonal diversity in the mutation calls, we computed the contribution of a single read to the CCF on genome-wide average. After systematically determining a threshold within the average increase of CCF per read values (see Methods for details), we determined the group of samples for which a reliable estimation of the subclonality score is not possible (grey area). The subclonality scores of the remaining SCLC cases were then compared to those of the adenocarcinoma cases ( $P = 0.000232$ ; Mann–Whitney test). **c**, Schematic representation of candidate genes with significant clustering of mutations in respective protein domains. Somatic mutations and genomic translocations are mapped to the respective protein regions. Hotspot mutations are highlighted in red. **d, e**, Genomic alterations in the *RBI* family proteins p107 (*RBL1*) and p130 (*RBL2*) (**d**), and in *KIT* and *PIK3CA* (**e**). Somatic mutations in therapeutic target genes are listed and mapped to the protein domains of *KIT* and *PIK3CA*. Mutations with potential therapeutic implications are highlighted in red.



**Extended Data Figure 4. Clinical molecular-correlations of significantly mutated genes**  
**a**, Survival analysis of SCLC patients based on the status of *CREBBP/EP300*, *TP73* or *NOTCH* alterations. Statistical significance was determined by log-rank test. **b**, Analysis of *CREBBP/EP300*, *TP73* and *NOTCH* alterations and their effect on clinical and genetic parameters. Statistical significance was analysed by multinomial logistic regression.



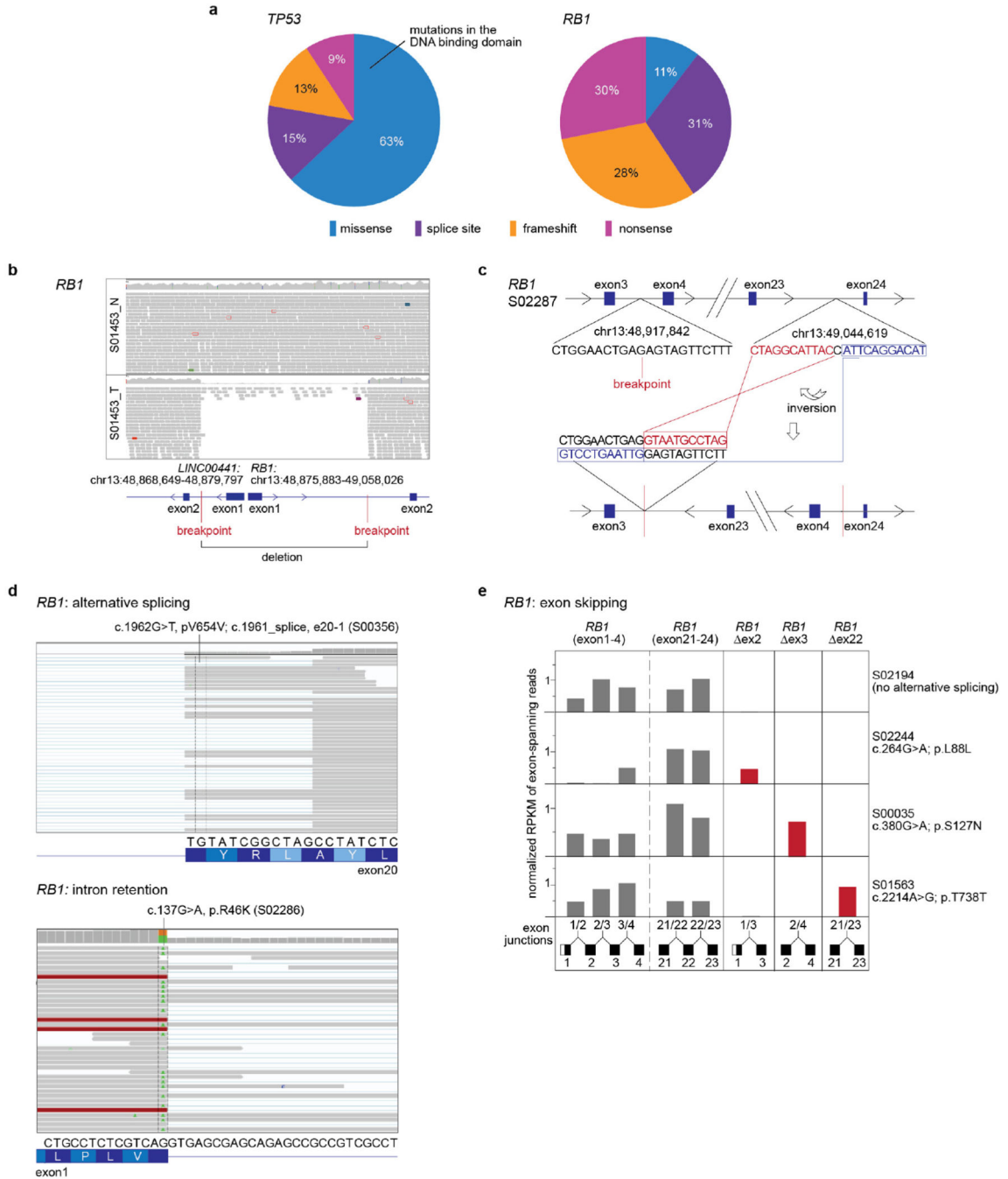
**Extended Data Figure 5. Significant somatic copy number alterations in SCLC**

**a**, Deletions of the chromosomal arm 3p point to the 3p14 (*FHIT*) and 3p12 (*ROBO1*) locus.

**b**, Expression analyses of genes encoded on the 3p14.3–3p14.2 and 3p12.2–3p12.2 locus. Histogram displaying the expression of samples with focal deletions (blue) and samples without any copy number alterations (white). Mean and standard error of the mean is plotted for each gene in each group. Significant differences were determined by Mann–Whitney test; \* $P < 0.05$ ; \*\* $P < 0.01$ .

**c, d**, Focal deletions of the *CDKN2A* (**c**) and focal amplifications of *IRS2* (**d**) were found on chromosome 9 and 13, respectively. The copy

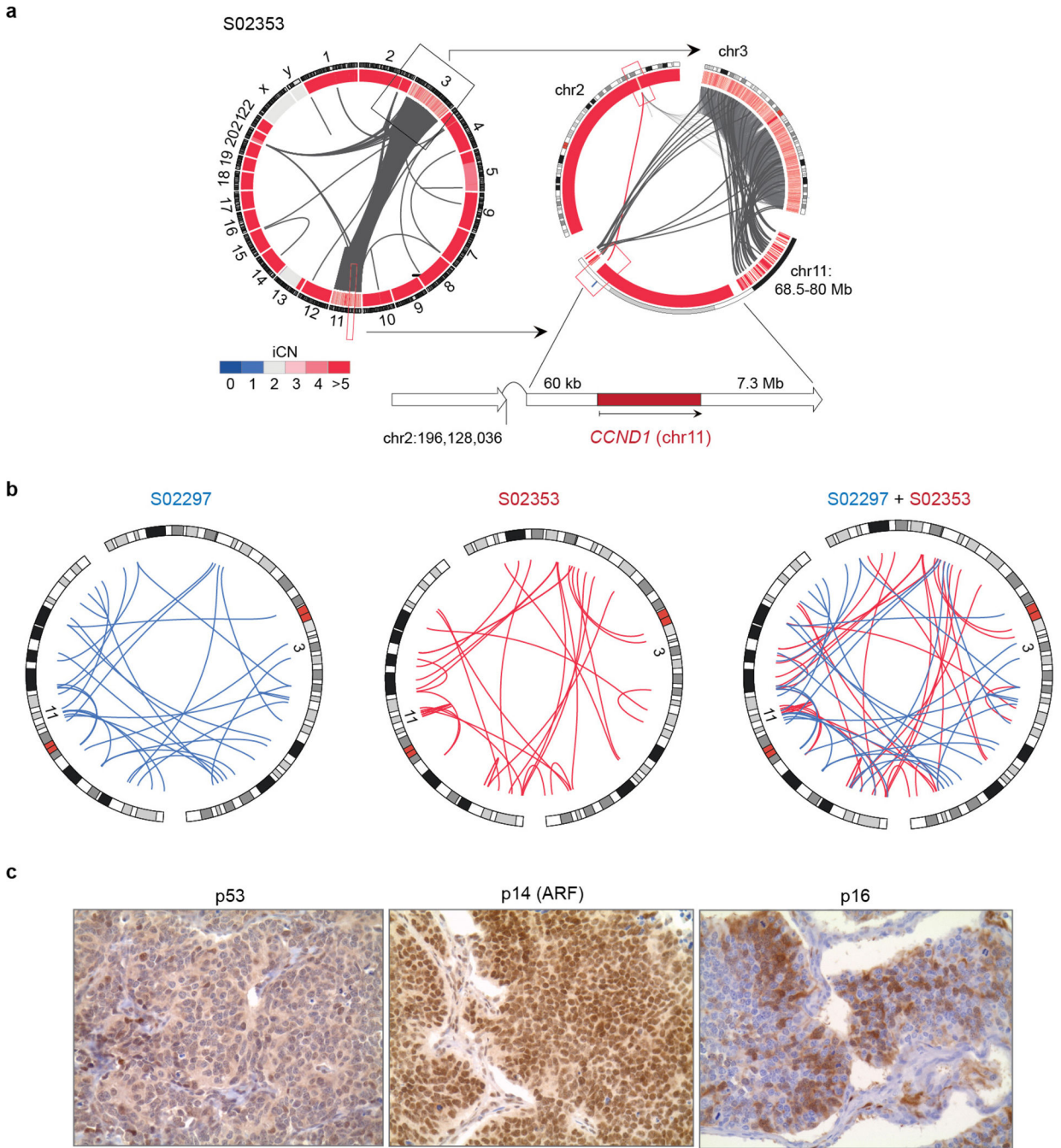
number (CN) states were computed from SNP array (SNP 6.0) and from whole-genome sequencing (WGS) data. The samples are sorted according to their amplitude of deletions or amplifications. **e**, Amplifications of *IRS2* were determined by FISH analysis. *IRS* amplifications were quantified based on the ratio of red signals (*IRS2*-specific probe) to green signals (centromere probe for chromosome 13). Lymphocyte spreads and SCLC tumours without detectable *IRS2* amplifications served as negative controls. Scale bar, 100  $\mu$ m.





**Extended Data Figure 6. *TP53* and *RBI* alterations in SCLC**

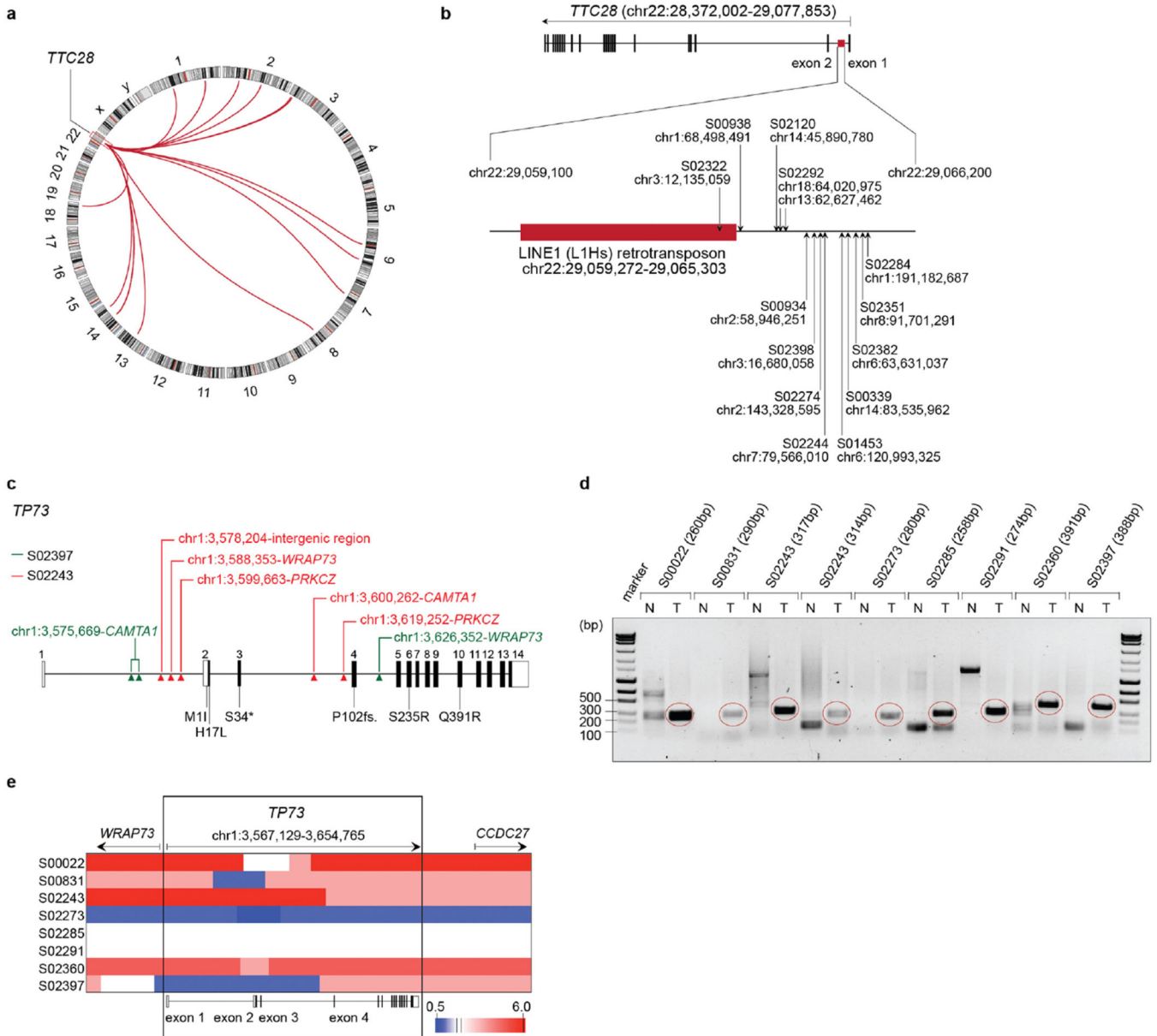
**a**, Distribution of somatic mutations in *TP53* and *RBI* according to the colour panel provided. **b, c**, Complex genomic rearrangements in *RBI* showing homozygous deletions of exon 1 (**b**) or inversions within the *RBI* gene (**c**). **d, e**, Annotated silent or missense mutations in *RBI* occur at intron-exon junctions resulting in alternative splicing, intron retention (**d**) or exon skipping events (**e**). The coverage at the respective exon junctions is quantified as RPKM values. Sample S02194 is not holding any mutations at intron-exon junctions and is displayed as an example for unaltered splicing of *RBI*.



**Extended Data Figure 7. Chromothripsis in human SCLC**

**a**, Circos plot of the chromothripsis sample S02353 showing intra- and interchromosomal rearrangements between chromosome 3 and 11. The integral copy number state (iCN) is plotted as a heatmap and assigned to the respective chromosomal regions. The chromosomal context of *CCND1* (on chromosome 11) is highlighted. **b**, Circos plots displaying fusion transcripts identified in the SCLC chromothripsis cases (Supplementary Table 12) are represented as blue (S02297) or red (S02353) lines for genes located on chromosome 3 and

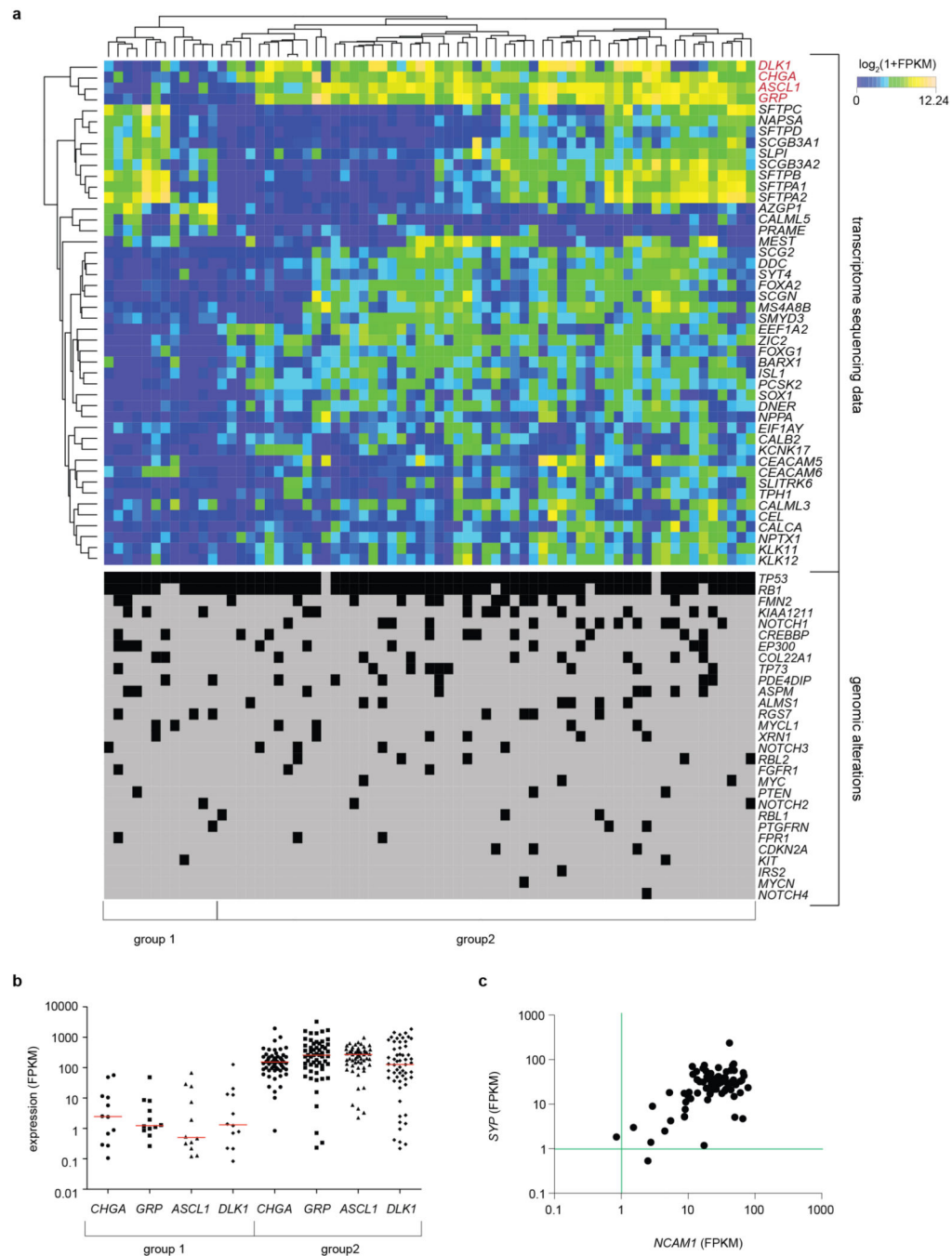
11. c, Immunohistochemistry staining for p53, p14 (ARF) and p16 on FFPE material of the chromothripsis sample S02297. Original magnification, ×400.



**Extended Data Figure 8. Recurrent genomic translocations in SCLC**

**a**, Recurrent genomic translocations ( $n = 14$ ) affecting chromosome 22 are illustrated as a Circos plot highlighting the respective rearrangements as red connecting lines. **b**, Breakpoints in chromosome 22 map to intron 1 of *TTC28* and cluster downstream of the LINE1 (L1Hs) retrotransposon. Each arrow indicates the sample and the respective chromosomal position the segment translocates to. **c**, Schematic representation of the *TP73* locus (hg19) describing complex intrachromosomal rearrangements of *TP73* identified for S02397 and S02243. Recurrent somatic mutations identified in Fig. 1a are mapped to the respective exons. **d**, Validation of somatic *TP73* translocations. Genomic regions involved in

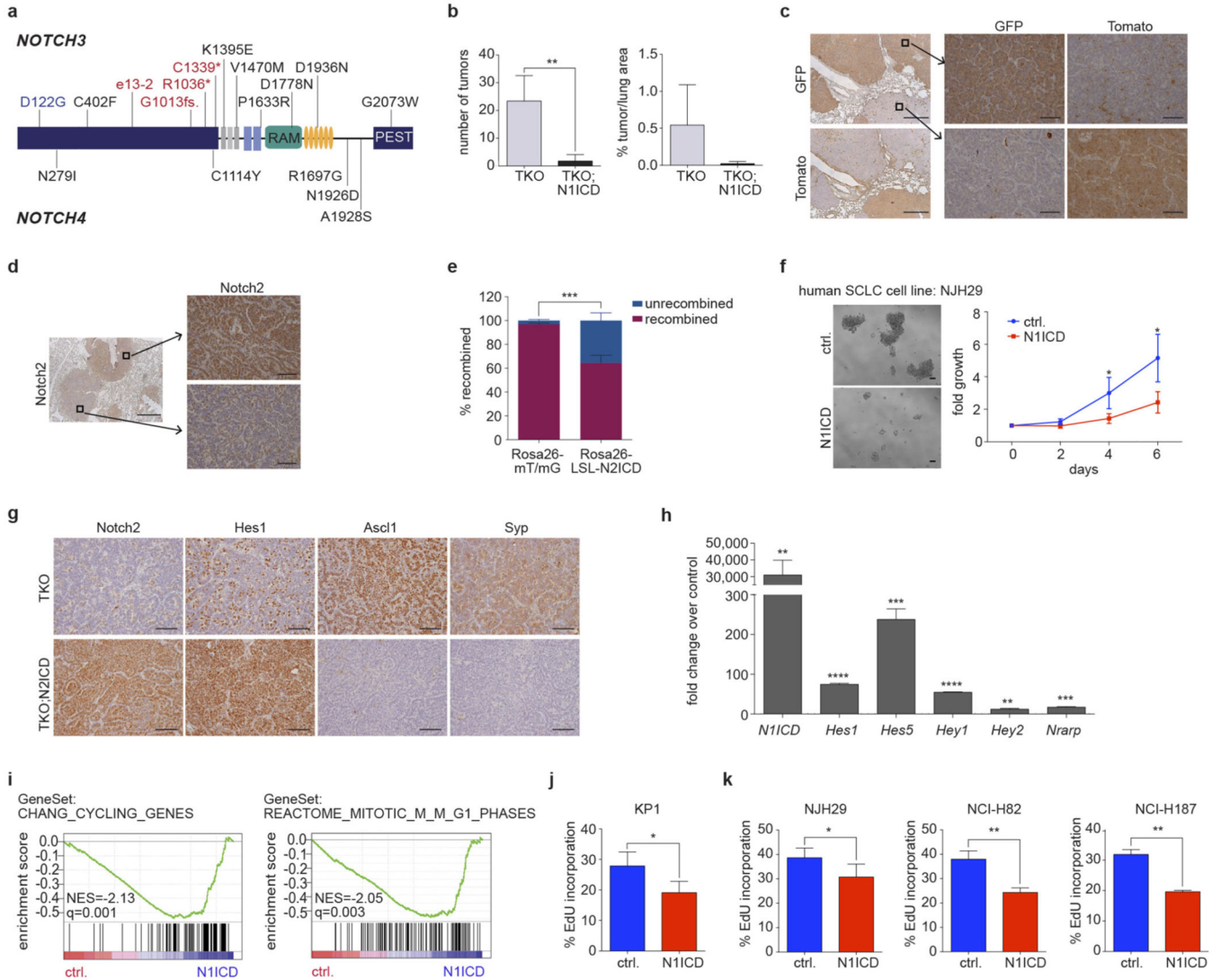
the *TP73* rearrangements were amplified in matched normal (N) and tumour (T) samples. The expected band size is indicated in brackets. The respective PCR products were subjected to Sanger sequencing to confirm the genomic breakpoint. **e**, Copy-number state of the *TP73* gene in samples involved in genomic translocations.



**Extended Data Figure 9. Transcriptome profile of human SCLC tumours**

**a**, Unsupervised hierarchical clustering of transcriptome sequencing data of 69 SCLC specimens as described in Fig. 4a. Each sample is annotated for the genomic alterations

described in Fig. 1. Black filled boxes describe the presence of a genomic event. **b**, Expression values of *CHGA*, *GRP*, *ASCL1* and *DLK1* (FPKM) are represented as dot density plots for the subgroups identified in (a). Red lines highlight the median value for each group. **c**, Expression values of the neuroendocrine markers *SYP* (synaptophysin) and *NCAMI* (CD56) plotted as scatter plots for all SCLC samples. Green lines indicate thresholds for no expression (FPKM<1).



**Extended Data Figure 10. Notch is a tumour suppressor in SCLC regulating neuroendocrine differentiation**

**a**, Somatic mutations identified in *NOTCH3* and *NOTCH4* are mapped to the protein domains. Damaging mutations are highlighted in red. Mutations found in murine SCLC tumours are highlighted in blue. **b**, Quantification of tumour lesions and per cent tumour area to lung in TKO ( $n = 5$ ) and TKO;N1ICD ( $n = 4$ ) mice 3 months after Ad-Cre instillation. Statistical significance was determined by two-tailed unpaired Student's *t*-test. **c**, Representative immunohistochemistry for GFP or tdTomato in lungs from

*TKO;Rosa26<sup>mt/mG</sup>* mice approximately 6 months after tumour induction. Left scale bar, 500  $\mu\text{m}$ ; right and middle: scale bar, 50  $\mu\text{m}$ . **d**, Representative immunostaining for Notch2 in lungs from *TKO;Rosa26<sup>N2ICD</sup>* mice approximately 6 months after tumour induction. Left scale bar, 500  $\mu\text{m}$ ; right scale bar, 50  $\mu\text{m}$ . **e**, Quantification of the per cent recombination at the *Rosa26* locus in *TKO;Rosa26<sup>mt/mG</sup>* ( $n = 6$ ) and *TKO;Rosa26<sup>N2ICD</sup>* mice ( $n = 10$ ); two-tailed unpaired Student's *t*-test). **f**, Cell viability assay of the human SCLC cell line NJH29 transfected with a N1ICD (Notch1) expression plasmid or empty vector control (Ctrl) (3 independent biological replicas with 3 technical replicas each). Fold growth was normalized to day 0; representative images were taken on day 6. Scale bar, 50  $\mu\text{m}$ . **g**, Immunohistochemistry staining in FFPE embedded tissues of TKO and TKO;N2ICD mice. Scale bar, 50  $\mu\text{m}$ . **h**, Quantitative RT-PCR validation of *Notch1* induction and the expression of common Notch target genes after N1ICD transfection in murine SCLC cells (three biological replicas; two-tailed paired Student's *t*-test). **i**, Mouse SCLC cells transfected with control or N1ICD (Notch1) were analysed 48 h later by gene expression microarrays. Gene Set Enrichment Analysis (GSEA) was performed on these data; selected significant gene sets are displayed. **j, k**, EdU analysis of mouse (**j**) and human (**k**) SCLC cells (three independent biological replicas with three technical replicas each; two-tailed paired Student's *t*-test). \* $P < 0.05$ ; \*\* $P < 0.01$ ; \*\*\* $P < 0.001$ . Data are represented as mean  $\pm$  s.d.

## Supplementary Material

Refer to Web version on PubMed Central for supplementary material.

## Authors

Julie George<sup>1,\*</sup>, Jing Shan Lim<sup>2,\*</sup>, Se Jin Jang<sup>3</sup>, Yupeng Cun<sup>1</sup>, Luka Ozreti<sup>4</sup>, Gu Kong<sup>5</sup>, Frauke Leenders<sup>1</sup>, Xin Lu<sup>1</sup>, Lynnette Fernández-Cuesta<sup>1,†</sup>, Graziella Bosco<sup>1</sup>, Christian Müller<sup>1</sup>, Ilona Dahmen<sup>1</sup>, Nadine S. Jahchan<sup>2</sup>, Kwon-Sik Park<sup>2</sup>, Dian Yang<sup>2</sup>, Anthony N. Karnezis<sup>6</sup>, Dedeepya Vaka<sup>2</sup>, Angela Torres<sup>2</sup>, Maia Segura Wang<sup>7</sup>, Jan O. Korbel<sup>7</sup>, Roopika Menon<sup>8</sup>, Sung-Min Chun<sup>3</sup>, Deokhoon Kim<sup>9</sup>, Matt Wilkerson<sup>10</sup>, Neil Hayes<sup>11</sup>, David Engelmann<sup>12</sup>, Brigitte Pützer<sup>12</sup>, Marc Bos<sup>1</sup>, Sebastian Michels<sup>13</sup>, Ignacija Vlastic<sup>14</sup>, Danila Seidel<sup>1</sup>, Berit Pinther<sup>1</sup>, Philipp Schaub<sup>1</sup>, Christian Becker<sup>15</sup>, Janine Altmüller<sup>15,16</sup>, Jun Yokota<sup>17,18</sup>, Takashi Kohno<sup>17</sup>, Reika Iwakawa<sup>17</sup>, Koji Tsuta<sup>19</sup>, Masayuki Noguchi<sup>20</sup>, Thomas Muley<sup>21,22</sup>, Hans Hoffmann<sup>21</sup>, Philipp A. Schnabel<sup>22,23</sup>, Iver Petersen<sup>24</sup>, Yuan Chen<sup>24</sup>, Alex Soltermann<sup>25</sup>, Verena Tischler<sup>25</sup>, Chang-min Choi<sup>26</sup>, Yong-Hee Kim<sup>27</sup>, Pierre P. Massion<sup>28</sup>, Yong Zou<sup>28</sup>, Dragana Jovanovic<sup>29</sup>, Milica Kontic<sup>29</sup>, Gavin M. Wright<sup>30</sup>, Prudence A. Russell<sup>31</sup>, Benjamin Solomon<sup>32</sup>, Ina Koch<sup>33</sup>, Michael Lindner<sup>33</sup>, Lucia A. Muscarella<sup>34</sup>, Annamaria la Torre<sup>34</sup>, John K. Field<sup>35</sup>, Marko Jakopovic<sup>36</sup>, Jelena Knezevic<sup>37</sup>, Esmeralda Castaños-Vélez<sup>38</sup>, Luca Roz<sup>39</sup>, Ugo Pastorino<sup>40</sup>, Odd-Terje Brustugun<sup>41,42</sup>, Marius Lund-Iversen<sup>43</sup>, Erik Thunnissen<sup>44</sup>, Jens Köhler<sup>45,46</sup>, Martin Schuler<sup>45,46</sup>, Johan Botling<sup>47</sup>, Martin Sandelin<sup>47</sup>, Montserrat Sanchez-Céspedes<sup>48</sup>, Helga B. Salvesen<sup>49,50</sup>, Viktor Achter<sup>51</sup>, Ulrich Lang<sup>51,52</sup>, Magdalena Bogus<sup>53</sup>, Peter M. Schneider<sup>53</sup>, Thomas Zander<sup>54</sup>, Sascha Ansén<sup>13</sup>, Michael Hallek<sup>13,55</sup>, Jürgen Wolf<sup>13</sup>, Martin Vingron<sup>56</sup>, Yasushi Yatabe<sup>57</sup>, William D. Travis<sup>58</sup>, Peter

Nürnberg<sup>15,55,59</sup>, Christian Reinhardt<sup>14</sup>, Sven Perner<sup>9</sup>, Lukas Heukamp<sup>4</sup>, Reinhard Büttner<sup>4</sup>, Stefan A. Haas<sup>56</sup>, Elisabeth Brambilla<sup>60</sup>, Martin Peifer<sup>1,59</sup>, Julien Sage<sup>2</sup>, and Roman K. Thomas<sup>1,4</sup>

## Affiliations

<sup>1</sup>Department of Translational Genomics, Center of Integrated Oncology Cologne–Bonn, Medical Faculty, University of Cologne, 50931 Cologne, Germany

<sup>2</sup>Departments of Pediatrics and Genetics, Stanford University, Stanford, California 94305, USA <sup>3</sup>Department of Pathology and Center for Cancer Genome Discovery, University of Ulsan College of Medicine, Asan Medical Center 88, Olympic-ro 43-gil, Songpa-gu, Seoul 138-736, Korea <sup>4</sup>Department of Pathology, University Hospital Cologne, 50937 Cologne, Germany <sup>5</sup>Department of Pathology, College of Medicine, Hanyang University, 222 Wangsimniro, Seongdong-gu, Seoul 133-791, Korea

<sup>6</sup>Vancouver General Hospital, Terry Fox laboratory, Vancouver, British Columbia V5Z 1L3, Canada <sup>7</sup>European Molecular Biology Laboratory, Genome Biology Unit, 69117 Heidelberg, Germany <sup>8</sup>Institute of Pathology, Center of Integrated Oncology Cologne–Bonn, University Hospital of Bonn, 53127 Bonn, Germany <sup>9</sup>Center for Cancer Genome Discovery, University of Ulsan College of Medicine, Asan Medical Center 88, Olympic-ro 43-gil, Songpa-gu, Seoul 138-736, Korea <sup>10</sup>Department of Genetics, Lineberger Comprehensive Cancer Center, The University of North Carolina at Chapel Hill, North Carolina 27599-7295, USA <sup>11</sup>UNC Lineberger Comprehensive Cancer Center School of Medicine, University of North Carolina at Chapel Hill, North Carolina 27599-7295, USA <sup>12</sup>Institute of Experimental Gene Therapy and Cancer Research, Rostock University Medical Center, 18057 Rostock, Germany <sup>13</sup>Department I of Internal Medicine, Center of Integrated Oncology Cologne–Bonn, University Hospital Cologne, 50937 Cologne, Germany

<sup>14</sup>Department of Internal Medicine, University Hospital of Cologne, 50931 Cologne, Germany <sup>15</sup>Cologne Center for Genomics (CCG), University of Cologne, 50931 Cologne, Germany <sup>16</sup>Institute of Human Genetics, University Hospital Cologne, 50931 Cologne, Germany <sup>17</sup>Division of Genome Biology, National Cancer Center Research Institute, Chuo-ku, Tokyo 1040045, Japan <sup>18</sup>Genomics and Epigenomics of Cancer Prediction Program, Institute of Predictive and Personalized Medicine of Cancer (IMPPC), Barcelona 08916, Spain <sup>19</sup>Department of Pathology and Clinical Laboratories, National Cancer Center Hospital Chuo-ku, Tokyo 1040045, Japan <sup>20</sup>Department of Pathology, Faculty of Medicine, University of Tsukuba, Ibaraki 305-8575, Japan <sup>21</sup>Thoraxklinik at University Hospital Heidelberg, Amalienstrasse 5, 69126 Heidelberg, Germany <sup>22</sup>Translational Lung Research Center Heidelberg (TLRC-H), Member of German Center for Lung Research (DZL), Amalienstrasse 5, 69126 Heidelberg, Germany <sup>23</sup>Institute of Pathology, University of Heidelberg, Im Neuenheimer Feld 220, 69120 Heidelberg, Germany <sup>24</sup>Institute of Pathology, Jena University Hospital, Friedrich-Schiller-University, 07743 Jena, Germany <sup>25</sup>Institute of Surgical Pathology, University Hospital Zürich, 8091 Zürich, Switzerland

<sup>26</sup>Department of Oncology, University of Ulsan College of Medicine, Asan Medical Center, 88, Olympic-ro 43-gil, Songpa-gu, Seoul 138-736, Korea <sup>27</sup>Department of Thoracic and Cardiovascular Surgery, University of Ulsan College of Medicine, Asan

Medical Center, 88, Olympic-ro 43-gil, Songpa-gu, Seoul 138-736, Korea <sup>28</sup>Thoracic Program, Vanderbilt-Ingram Cancer Center PRB 640, 2220 Pierce Avenue, Nashville, Tennessee 37232, USA <sup>29</sup>University Hospital of Pulmonology, Clinical Center of Serbia, Medical School, University of Belgrade, 11000 Belgrade, Serbia <sup>30</sup>Department of Surgery, St. Vincent's Hospital, Peter MacCallum Cancer Centre, 3065 Melbourne, Victoria, Australia <sup>31</sup>Department of Pathology, St. Vincent's Hospital, Peter MacCallum Cancer Centre, 3065 Melbourne, Victoria, Australia <sup>32</sup>Department of Haematology and Medical Oncology, Peter MacCallum Cancer Centre, 3065 Melbourne, Victoria, Australia <sup>33</sup>Asklepios Biobank für Lungenerkrankungen, Comprehensive Pneumology Center Munich, Member of the German Center for Lung Research (DZL), Asklepios Fachkliniken München-Gauting 82131, Germany <sup>34</sup>Laboratory of Oncology, IRCCS Casa Sollievo della Sofferenza, Viale Cappuccini, 71013 San Giovanni, Rotondo, Italy <sup>35</sup>Roy Castle Lung Cancer Research Programme, Department of Molecular and Clinical Cancer Medicine, Institute of Translational Medicine, The University of Liverpool Cancer Research Centre, 200 London Road, L69 3GA Liverpool, UK <sup>36</sup>University of Zagreb, School of Medicine, Department for Respiratory Diseases Jordanovac, University Hospital Center Zagreb, 10000 Zagreb, Croatia <sup>37</sup>Laboratory for Translational Medicine, Rudjer Boskovic Institute, 10000 Zagreb, Croatia <sup>38</sup>Charité Comprehensive Cancer Center, Charité Campus Mitte, 10115 Berlin, Germany <sup>39</sup>Tumor Genomics Unit, Department of Experimental Oncology and Molecular Medicine, Fondazione IRCCS — Istituto Nazionale Tumori, Via Venezian 1, 20133 Milan, Italy <sup>40</sup>Thoracic Surgery Unit, Department of Surgery, Fondazione IRCCS Istituto Nazionale Tumori, 20133 Milan, Italy <sup>41</sup>Institute of Clinical Medicine, Faculty of Medicine, University of Oslo, N-0424 Oslo, Norway <sup>42</sup>Department of Oncology, Norwegian Radium Hospital, Oslo University Hospital, N-0310 Oslo, Norway <sup>43</sup>Department of Pathology, Norwegian Radium Hospital, Oslo University Hospital, N-0310 Oslo, Norway <sup>44</sup>Department of Pathology, VU University Medical Center, 1007 MB Amsterdam, The Netherlands <sup>45</sup>West German Cancer Center, Department of Medical Oncology, University Hospital Essen, 45147 Essen, Germany <sup>46</sup>German Cancer Consortium (DKTK), 69120 Heidelberg, Germany <sup>47</sup>Departments of Immunology, Genetics and Pathology, and Medical Sciences, Respiratory, Allergy and Sleep Research, Uppsala University, 75185 Uppsala, Sweden <sup>48</sup>Genes and Cancer Group, Cancer Epigenetics and Biology Program (PEBC), Bellvitge Biomedical Research Institute (IDIBELL), 08908 Hospitalet de Llobregat, Barcelona, Spain <sup>49</sup>Department of Clinical Science, Center for Cancer Biomarkers, University of Bergen, N-5058 Bergen, Norway <sup>50</sup>Department of Gynecology and Obstetrics, Haukeland University Hospital, N-5058 Bergen, Norway <sup>51</sup>Computing Center, University of Cologne, 50931 Cologne, Germany <sup>52</sup>Department of Informatics, University of Cologne, 50931 Cologne, Germany <sup>53</sup>Institute of Legal Medicine, University of Cologne, 50823 Cologne, Germany <sup>54</sup>Gastrointestinal Cancer Group Cologne, Center of Integrated Oncology Cologne–Bonn, Department I for Internal Medicine, University Hospital of Cologne, 50937 Cologne, Germany <sup>55</sup>Cologne Excellence Cluster on Cellular Stress Responses in Aging-Associated Diseases (CECAD), University of



Cologne, 50931 Cologne, Germany <sup>56</sup>Computational Molecular Biology Group, Max Planck Institute for Molecular Genetics, 14195 Berlin, Germany <sup>57</sup>Department of Pathology and Molecular Diagnostics, Aichi Cancer Center, 464-8681 Nagoya, Japan <sup>58</sup>Department of Pathology, Memorial Sloan-Kettering Cancer Center, New York 10065, USA <sup>59</sup>Center for Molecular Medicine Cologne (CMMC), University of Cologne, 50931 Cologne, Germany <sup>60</sup>Department of Pathology, CHU Grenoble INSERM U823, University Joseph Fourier, Institute Albert Bonniot 38043, CS10217 Grenoble, France

## Acknowledgments

We are grateful to all the patients who contributed their tumour specimens. We thank the computing center of the University of Cologne (RRZK) for providing the CPU time on the DFG-funded supercomputer 'CHEOPS', as well as for the support. We thank S. Artavanis-Tsakonas and S. Fre for the gift of the mice with inducible NICD expression. We thank C. Nguyen, J. Berg, J. Heuckmann, F. Malchers, C. Lovely and A. Bernschein for scientific discussions and advice. We thank Genentech/gRED for providing raw sequencing data from a previously published study<sup>3</sup>. Some tumors in these studies were provided by the LungBiobank Heidelberg, member of the NCT-Tissue bank, the biomaterial bank Heidelberg and the biobank platform of the German Center for Lung Research, Heidelberg, Germany. This work was supported by the German Cancer Aid (Deutsche Krebshilfe) as part of the small cell lung cancer genome sequencing consortium (grant ID: 109679 to R.K.T., M.P., R.B., P.N., M.V. and S.A.H.). Further support was provided by the Korea Research Foundation (KRF 2011-0030105; grant to S.J.J.). Additional funding was provided by the NIH (5R01CA114102-08 to J.S.), the German Ministry of Science and Education (BMBF) as part of the NGFNplus program (grant 01GS08101 to R.K.T., J.W. and P.N.) and as part of the e:Med program (grant no. 01ZX1303A to R.K.T., J.W., C.R., R.B. and M.P. and grant no. 01ZX1406 to M.P.), by the Deutsche Forschungsgemeinschaft (DFG; through TH1386/3-1 to R.K.T. and KFO-286 to P.N.), by the German federal state North Rhine Westphalia (NRW), by the European Union (European Regional Development Fund: Investing In Your Future) as part of the PerMed NRW initiative (grant 005-1111-0025 to R.K.T., J.W. and R.B.), by SFB832 (TP6 to R.K.T., TP5 to L.C.H.), by the Deutsche Krebshilfe as part of the Oncology Centers of Excellence funding program (to R.B., R.K.T. and M.S.), by the EU-Framework program CURELUNG (HEALTH-F2-2010-258677 to R.K.T., J.W., J.K.F., L.R., M.S.C. and E.B.), by Stand Up To Cancer—American Association of Cancer Research Innovative Research Grant (SU2C-AACR-IR60109 to R.K.T.), by the German Consortium for Translational Cancer Research (DKTK) Joint Funding program, by the National Cancer Center Research and Development Fund (NCC Biobank: 23A-1, to T.K., J.Y. and R.I.), by the Italian Ministry of Health (Ricerca Corrente RC1303LO57 and GR program 2010-2316264 to L.A.M.), by the Roy Castle Lung Cancer Foundation UK (to J.K.F.), by the AIRC/MGAF grant 12983 (to L.A.M.) and by A\*STAR in Singapore (scholarship to J.S.L.). J.S. is the Harriet and Mary Zelencik Scientist in Children's Cancer and Blood Diseases.

## References

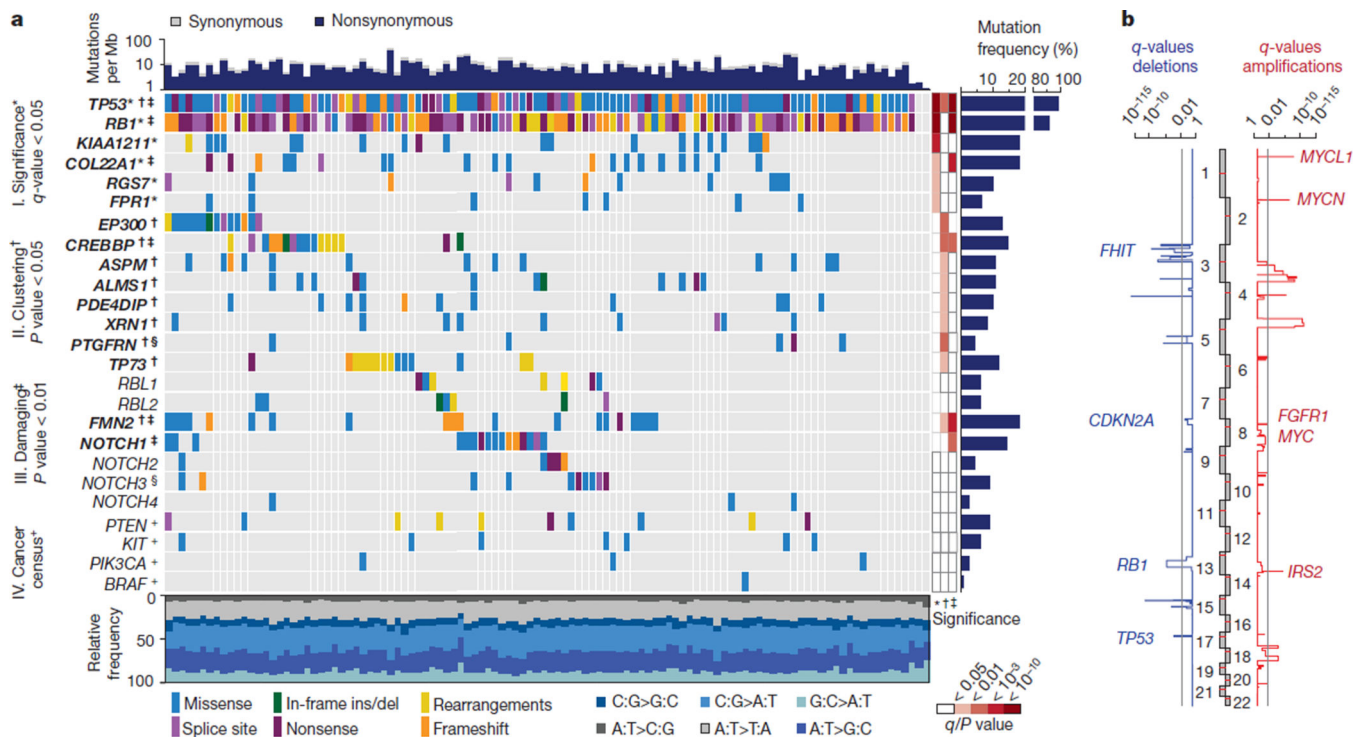
1. van Meerbeeck JP, Fennell DA, De Ruyscher DK. Small-cell lung cancer. *Lancet*. 2011; 378:1741–1755. [PubMed: 21565397]
2. Peifer M, et al. Integrative genome analyses identify key somatic driver mutations of small-cell lung cancer. *Nature Genet*. 2012; 44:1104–1110. [PubMed: 22941188]
3. Rudin CM, et al. Comprehensive genomic analysis identifies *SOX2* as a frequently amplified gene in small-cell lung cancer. *Nature Genet*. 2012; 44:1111–1116. [PubMed: 22941189]
4. Takahashi T, et al. p53: a frequent target for genetic abnormalities in lung cancer. *Science*. 1989; 246:491–494. [PubMed: 2554494]
5. Wistuba II, Gazdar AF, Minna JD. Molecular genetics of small cell lung carcinoma. *Semin. Oncol*. 2001; 28:3–13. [PubMed: 11479891]
6. Horowitz JM, et al. Frequent inactivation of the retinoblastoma anti-oncogene is restricted to a subset of human tumor cells. *Proc. Natl Acad. Sci. USA*. 1990; 87:2775–2779. [PubMed: 2181449]
7. Mori N, et al. Variable mutations of the RB gene in small-cell lung carcinoma. *Oncogene*. 1990; 5:1713–1717. [PubMed: 2176283]
8. Meuwissen R, et al. Induction of small cell lung cancer by somatic inactivation of both Trp53 and Rb1 in a conditional mouse model. *Cancer Cell*. 2003; 4:181–189. [PubMed: 14522252]

9. Schaffer BE, et al. Loss of p130 accelerates tumor development in a mouse model for human small-cell lung carcinoma. *Cancer Res.* 2010; 70:3877–3883. [PubMed: 20406986]
10. McFadden DG, et al. Genetic and clonal dissection of murine small cell lung carcinoma progression by genome sequencing. *Cell.* 2014; 156:1298–1311. [PubMed: 24630729]
11. Imielinski M, et al. Mapping the hallmarks of lung adenocarcinoma with massively parallel sequencing. *Cell.* 2012; 150:1107–1120. [PubMed: 22980975]
12. Zhang J, et al. Intratumor heterogeneity in localized lung adenocarcinomas delineated by multiregion sequencing. *Science.* 2014; 346:256–259. [PubMed: 25301631]
13. de Bruin EC, et al. Spatial and temporal diversity in genomic instability processes defines lung cancer evolution. *Science.* 2014; 346:251–256. [PubMed: 25301630]
14. Futreal PA, et al. A census of human cancer genes. *Nature Rev. Cancer.* 2004; 4:177–183. [PubMed: 14993899]
15. Forbes SA, et al. COSMIC: exploring the world’s knowledge of somatic mutations in human cancer. *Nucleic Acids Res.* 2015; 43:D805–D811. [PubMed: 25355519]
16. Lawrence MS, et al. Mutational heterogeneity in cancer and the search for new cancer-associated genes. *Nature.* 2013; 499:214–218. [PubMed: 23770567]
17. Yokomizo A, et al. PTEN/MMAC1 mutations identified in small cell, but not in non-small cell lung cancers. *Oncogene.* 1998; 17:475–479. [PubMed: 9696041]
18. Holderfield M, Deuker MM, McCormick F, McMahon M. Targeting RAF kinases for cancer therapy: BRAF-mutated melanoma and beyond. *Nature Rev. Cancer.* 2014; 14:455–467. [PubMed: 24957944]
19. Hibi K, et al. Coexpression of the stem cell factor and the c-kit genes in small-cell lung cancer. *Oncogene.* 1991; 6:2291–2296. [PubMed: 1722571]
20. Hirota S, et al. Gain-of-function mutations of c-kit in human gastrointestinal stromal tumors. *Science.* 1998; 279:577–580. [PubMed: 9438854]
21. Shibata T, Kokubu A, Tsuta K, Hirohashi S. Oncogenic mutation of *PIK3CA* in small cell lung carcinoma: a potential therapeutic target pathway for chemotherapy-resistant lung cancer. *Cancer Lett.* 2009; 283:203–211. [PubMed: 19394761]
22. Angeloni D, et al. Analysis of a new homozygous deletion in the tumor suppressor region at 3p12.3 reveals two novel intronic noncoding RNA genes. *Genes Chromosom. Cancer.* 2006; 45:676–691. [PubMed: 16607615]
23. Kovatich A, et al. Molecular alterations to human chromosome 3p loci in neuroendocrine lung tumors. *Cancer.* 1998; 83:1109–1117. [PubMed: 9740075]
24. Weiss J, et al. Frequent and focal *FGFR1* amplification associates with therapeutically tractable FGFR1 dependency in squamous cell lung cancer. *Sci. Transl. Med.* 2010; 2:62ra93.
25. Korbelt JO, Campbell PJ. Criteria for inference of chromothripsis in cancer genomes. *Cell.* 2013; 152:1226–1236. [PubMed: 23498933]
26. Knudson AG. Two genetic hits (more or less) to cancer. **1**. *Nature Rev. Genet.* 2001; 1:157–162.
27. Berger AH, Knudson AG, Pandolfi PP. A continuum model for tumour suppression. *Nature.* 2011; 476:163–169. [PubMed: 21833082]
28. Beasley MB, et al. The P16/cyclin D1/Rb pathway in neuroendocrine tumors of the lung. *Hum. Pathol.* 2003; 34:136–142. [PubMed: 12612881]
29. Northcott PA, et al. Enhancer hijacking activates GFI1 family oncogenes in medulloblastoma. *Nature.* 2014; 511:428–434. [PubMed: 25043047]
30. The Cancer Genome Atlas Network. Comprehensive molecular characterization of human colon and rectal cancer. *Nature.* 2012; 487:330–337. [PubMed: 22810696]
31. Pitkänen E, Cajuso T, Katainen R, Kaasinen E, Välimäki N. Frequent L1 retrotranspositions originating from TTC28 in colorectal cancer. *Oncotarget.* 2014; 5:853–859. [PubMed: 24553397]
32. Helman E, Lawrence ML, Stewart C. Somatic retrotransposition in human cancer revealed by whole-genome and exome sequencing. *Genome Res.* 2014; 24:1053–1063. [PubMed: 24823667]
33. Jancalek R. The role of the *TP73* gene and its transcripts in neuro-oncology. *Br. J. Neurosurg.* 2014; 28:598–605. [PubMed: 24742294]

34. Tannapfel A, et al. Autonomous growth and hepatocarcinogenesis in transgenic mice expressing the p53 family inhibitor DNp73. *Carcinogenesis*. 2008; 29:211–218. [PubMed: 17984115]
35. Venkatanarayan A, et al. IAPP-driven metabolic reprogramming induces regression of p53-deficient tumours *in vivo*. *Nature*. 2015; 517:626–630. [PubMed: 25409149]
36. Falix FA, Aronson DC, Lamers WH, Gaemers IC. Possible roles of DLK1 in the Notch pathway during development and disease. *Biochim. Biophys. Acta*. 2012; 1822:988–995. [PubMed: 22353464]
37. Ball DW. Achaete-scute homolog-1 and Notch in lung neuroendocrine development and cancer. *Cancer Lett*. 2004; 204:159–169. [PubMed: 15013215]
38. Augustyn A, et al. ASCL1 is a lineage oncogene providing therapeutic targets for high-grade neuroendocrine lung cancers. *Proc. Natl Acad. Sci. USA*. 2014; 111:14788–14793. [PubMed: 25267614]
39. Sriuranpong V, et al. Notch signaling induces cell cycle arrest in small cell lung cancer cells. *Cancer Res*. 2001; 1:3200–3205. [PubMed: 11306509]
40. Wael H, et al. Notch1 signaling controls cell proliferation, apoptosis and differentiation in lung carcinoma. *Lung Cancer*. 2014; 85:131–140. [PubMed: 24888228]
41. Rangarajan A, et al. Notch signaling is a direct determinant of keratinocyte growth arrest and entry into differentiation. *EMBO J*. 2001; 20:3427–3436. [PubMed: 11432830]
42. Qi R, et al. Notch1 signaling inhibits growth of human hepatocellular carcinoma through induction of cell cycle arrest and apoptosis. *Cancer Res*. 2003; 63:8323–8329. [PubMed: 14678992]

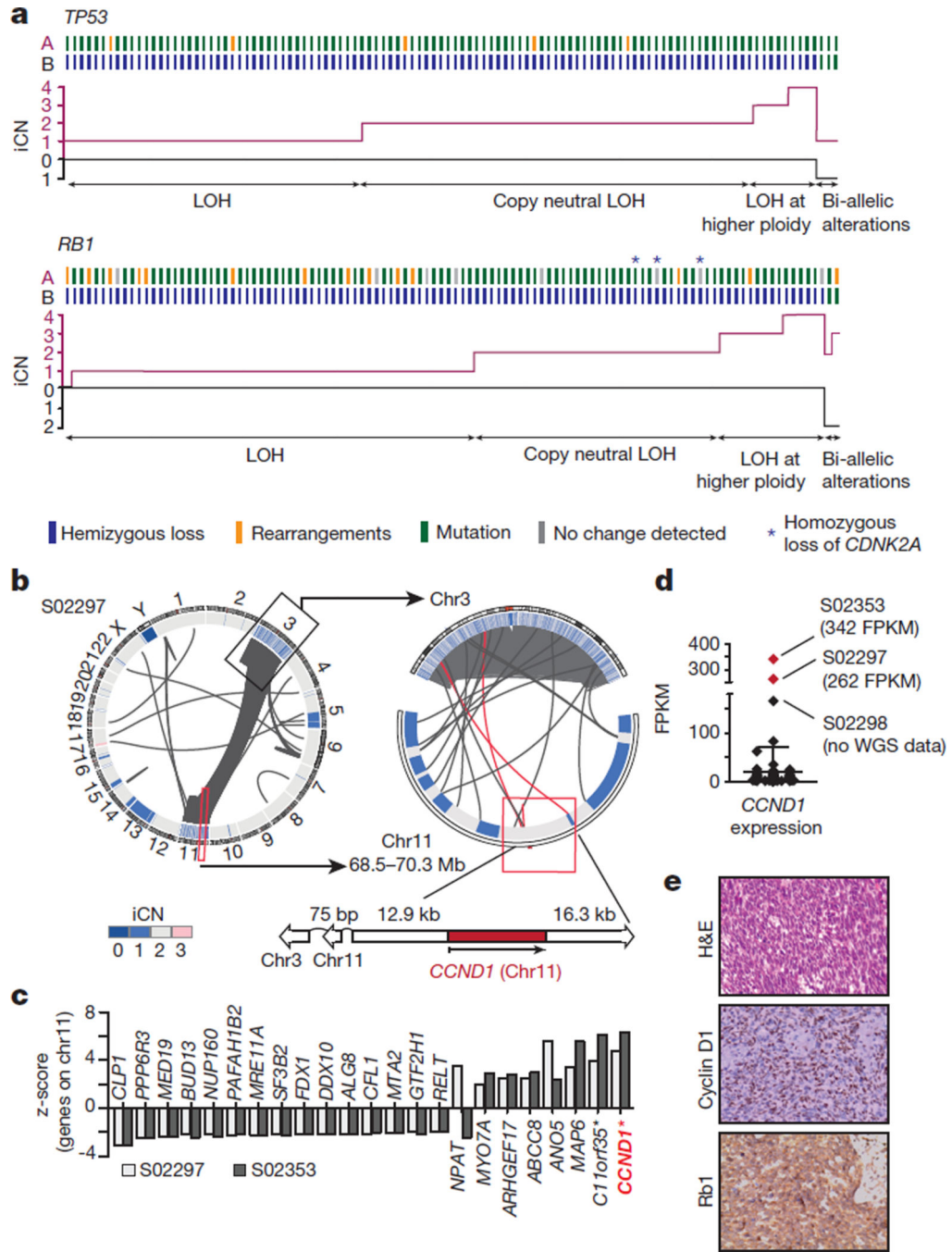
## References

43. Iwakawa R, et al. Genome-wide identification of genes with amplification and/or fusion in small cell lung cancer. *Genes Chromosomes Cancer*. 2013; 52:802–816. [PubMed: 23716474]
44. Seidel D. A genomics-based classification of human lung tumors. *Sci. Transl. Med*. 2013; 5:209ra153.
45. Lafkas D, et al. Notch3 marks clonogenic mammary luminal progenitor cells *in vivo*. *J. Cell Biol*. 2013; 203:47–56. [PubMed: 24100291]
46. Muzumdar MD, Tasic B, Miyamichi K, Li L, Luo L. A global double-fluorescent Cre reporter mouse. *Genesis*. 2007; 45:593–605. [PubMed: 17868096]
47. Lu X, Thomas RK, Peifer M. CGARS: cancer genome analysis by rank sums. *Bioinformatics*. 2014; 30:1295–1296. [PubMed: 24413525]
48. Li H, Durbin R. Fast and accurate short read alignment with Burrows–Wheeler transform. *Bioinformatics*. 2009; 25:1754–1760. [PubMed: 19451168]
49. Fernandez-Cuesta L, et al. Frequent mutations in chromatin-remodelling genes in pulmonary carcinoids. *Nat. Commun*. 2014; 5:3518. [PubMed: 24670920]
50. Jahchan NS, et al. A drug repositioning approach identifies tricyclic antidepressants as inhibitors of small cell lung cancer and other neuroendocrine tumors. *Cancer Discov*. 2013; 3:1364–1377. [PubMed: 24078773]



**Figure 1. Genomic alterations in small cell lung cancer**

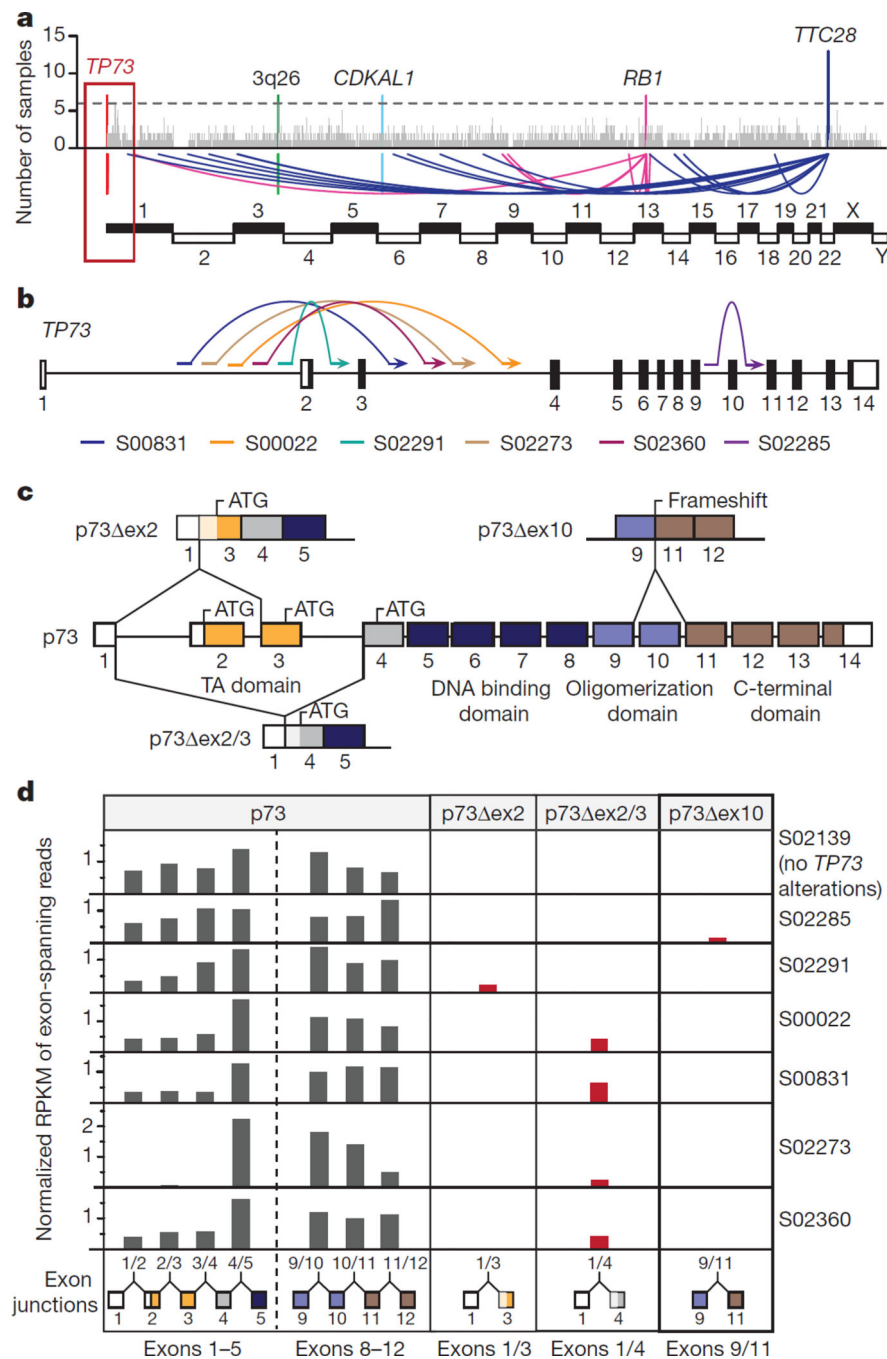
**a**, Tumour samples are arranged from left to right. Alterations of SCLC candidate genes are annotated for each sample according to the colour panel below the image. The somatic mutation frequencies for each candidate gene are plotted on the right panel. Mutation rates and type of base-pair substitution are displayed in the top and bottom panel, respectively. Significant candidate genes are highlighted in bold (\*corrected  $q$ -values < 0.05, † $P$  < 0.05, ‡ $P$  < 0.01). The respective level of significance is displayed as a heatmap on the right panel. Genes that are also mutated in murine SCLC tumours are denoted with a § symbol. Mutated cancer census genes of therapeutic relevance are denoted with a + symbol. **b**, Somatic copy number alterations determined for 142 human SCLC tumours by single nucleotide polymorphism (SNP) arrays. Significant amplifications (red) and deletions (blue) were determined for the chromosomal regions and are plotted as  $q$ -values (significance < 0.05).



**Figure 2. Universal bi-allelic inactivation of *TP53* and *RB1* in human SCLC**

**a**, Alterations of *TP53* and *RB1* were determined based on whole-genome sequencing data of 108 SCLC cases. Samples are plotted from left to right. Alleles A and B are represented for each case and colour-coded according to the somatic alteration. The integral copy number (iCN) state of each allele is plotted; hemizygous losses are annotated as loss of heterozygosity (LOH), copy-neutral LOH or LOH at higher ploidy. Samples retaining allele A and B show alterations on both alleles (bi-allelic alterations). **b**, Circos plot of case S02297 showing intra- and interchromosomal translocations between chromosome 3 and 11.

The copy number state of the respective chromosomal regions (iCN) is plotted as a heatmap. The genomic context of *CCND1* (on chromosome 11) is highlighted. **c**, Significantly differentially expressed genes encoded on chromosome 11 are analysed in both chromothripsis cases in comparison to all other tumours. Positive and negative *z*-scores show upregulation and downregulation of genes, respectively ( $P < 0.05$ ; \* $q$ -value  $< 0.05$ ). **d**, Distribution of *CCND1* expression over 81 SCLC samples. Chromothripsis cases are highlighted in red. **e**, Haematoxylin and eosin (H&E) and immunohistochemistry staining for cyclin D1 and Rb1 for sample S02297. Original magnification,  $\times 400$ .



**Figure 3. Recurrent rearrangements generating oncogenic variants of TP73**

**a.** Genomic breakpoints identified by whole-genome sequencing were mapped to their chromosomal locations. Recurrent breakpoints ( $n > 6$  samples) are highlighted in colours. **b.** Schematic representation of the *TP73* locus (hg19) illustrating intragenic translocations. Coding and non-coding regions of the annotated exons are shown as black and white boxes, respectively. **c.** Schematic representation of exons encoding p73, p73 ex2, p73 ex2/3 and p73 ex10. **d.** Exon skipping events were assessed in the transcriptome data of samples with genomic translocations resulting in p73 ex2, p73 ex2/3 and p73 ex10 transcript variants.

S02139 served as a reference sample without *TP73* alterations. The expression of uncommon exon combinations is highlighted in red.

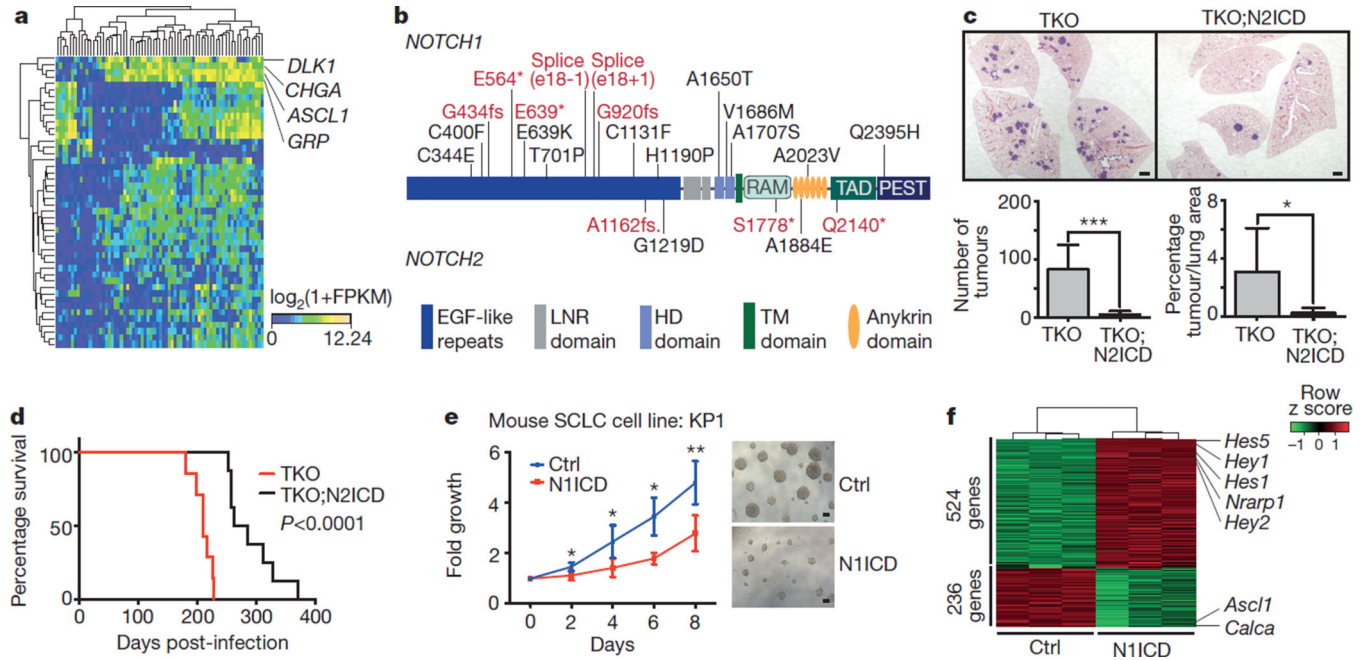
Author Manuscript

Author Manuscript

Author Manuscript

Author Manuscript

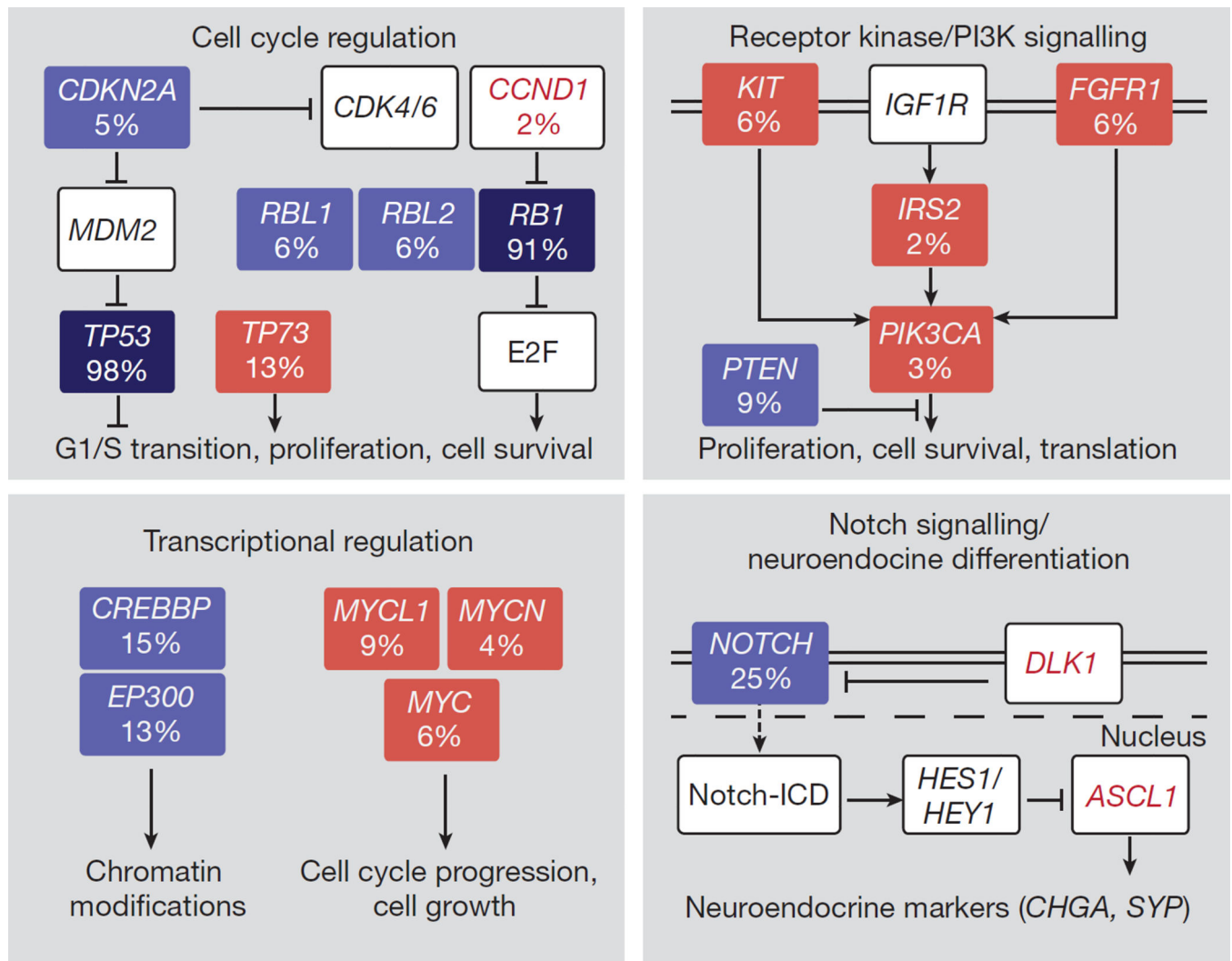




**Figure 4. Notch is a tumour suppressor and a key regulator of neuroendocrine differentiation in SCLC**

**a**, Unsupervised expression analysis of human SCLC tumours. Tumour samples are arranged in columns and grouped by the expression of differentially expressed genes (rows). Expression values are represented as a heatmap; yellow and blue indicate high and low expression, respectively. **b**, Schematic representation of *NOTCH1* and *NOTCH2*. Somatic mutations are mapped to the respective protein domains. Damaging and missense mutations are highlighted in red and black, respectively. **c**, Representative H&E images of lungs from *Trp53;Rb1;Rbl2* triple-knockout (TKO) or TKO;N2ICD (Notch2) mice collected 3 months after Ad-Cre instillation. Scale bar, 1 mm. Tumours were quantified for each genotype ( $n = 8$ ). Statistical significance was determined by two-tailed unpaired Student's *t*-test. **d**,

Survival analysis of TKO ( $n = 7$ , median survival = 210 days) and TKO;N2ICD ( $n = 8$ , median survival = 274 days) mice. Statistical significance was determined by log-rank test. **e**, Cell viability assay of the murine SCLC cell line KP1 transfected with a N1ICD (Notch1) expression plasmid or empty vector control (Ctrl) (3 independent biological replicas with 3 technical replicas each). Fold growth is normalized to day 0; representative images were taken on day 8. Scale bar, 50  $\mu\text{m}$ . Statistical significance was determined by two-tailed paired Student's *t*-test. **f**, Mouse SCLC cells were transfected with control or N1ICD and analysed 48 h after transfection by gene expression microarrays. The heatmap describes differentially expressed genes in control or N1ICD-transfected cells ( $n = 3$ , each); red and green indicate high and low expression, respectively. \* $P < 0.05$ ; \*\* $P < 0.01$ ; \*\*\* $P < 0.001$ . Data are represented as mean  $\pm$  s.d.



**Figure 5. Signalling pathways recurrently affected in SCLC**

Red and blue boxes denote genes with activating and inactivating alterations, respectively.

Deep blue boxes highlight the bi-allelic inactivation of *TP53* and *RB1*. Genes found expressed at high levels are shown in red font.