

UCSF

UC San Francisco Previously Published Works

Title

Signal Integration by Translocation and Phosphorylation of PKC δ in the B Cell Alternate Pathway.

Permalink

<https://escholarship.org/uc/item/4wd8r5kw>

Journal

The Journal of Immunology, 207(9)

ISSN

0022-1767

Authors

Khan, Naeem
Hu, Yongmei
Lowell, Clifford A
[et al.](#)

Publication Date

2021-11-01

DOI

10.4049/jimmunol.2100295

Peer reviewed



Published in final edited form as:

J Immunol. 2021 November 01; 207(9): 2288–2296. doi:10.4049/jimmunol.2100295.

Signal integration by translocation and phosphorylation of PKC δ in the B cell alternate pathway

Naeem Khan¹, Yongmei Hu², Clifford A. Lowell², Thomas L. Rothstein^{1,3}

¹Center for Immunobiology, Western Michigan University Homer Stryker M.D. School of Medicine, Kalamazoo, MI, U.S.A.

²Department of Laboratory Medicine, University of California at San Francisco School of Medicine, San Francisco, CA, U.S.A.

³Department of Investigative Medicine, Western Michigan University Homer Stryker M.D. School of Medicine, Kalamazoo, MI, U.S.A.

Abstract

B cell signaling for activation via the BCR occurs as an isolated event only *in vitro*; in real life, BCR signaling takes place within a complex milieu that involves interactions with agents that trigger additional receptors. Chief among these is IL-4. We have shown that BCR signaling is reprogrammed by IL-4 receptor engagement, and that this reprogramming involves creation of a new, signalosome-independent, Lyn-dependent alternate signaling pathway in B cells isolate from BALB/cByJ mice. A unique aspect of alternate pathway is PKC δ phosphorylation. In dissecting this pathway, we unexpectedly found that Lyn is associated with IL-4R α , that IL-4 induces Lyn activation, and that Lyn immunoprecipitated from IL-4-treated B cells capably phosphorylates PKC δ in a cell-free system. However, PKC δ phosphorylation doesn't occur in the absence of BCR triggering *in vivo*. This raised the question of why IL-4 alone failed to produce PKC δ phosphorylation. We considered the possibility that Lyn and PKC δ may be spatially separated. As expected, before any treatment, Lyn is located primarily in the membrane fraction, whereas PKC δ is located mainly in the cytosol fraction. However, when anti-Ig follows IL-4 treatment, PKC δ is found in the membrane fraction and phosphorylated. This translocation of PKC δ to the membrane fraction is not affected by loss of Lyn, although PKC δ phosphorylation requires Lyn. Thus, PKC δ phosphorylation through the alternate pathway represents the result of signal integration, whereby neither IL-4 nor anti-Ig working alone produce this outcome, but together achieve this result by Lyn activation (IL-4) and PKC δ translocation (IL-4 followed by anti-Ig).

Correspondence: Thomas L. Rothstein, Western Michigan University Homer Stryker MD School of Medicine, 1000 Oakland Drive, Kalamazoo, MI, U.S.A. Tel: (269) 337-4359, tom.rothstein@med.wmich.edu.

Authors Contributions

NK designed the experiments, performed the experiments, analyzed the data, and wrote the manuscript. YH and CAL helped design and carry out some experiments, and helped analyze the data. TLR designed the experiments, analyzed the data, and wrote the manuscript.

Competing interests: Authors declare that they have no competing interests.

Data and materials availability: All data required to evaluate the conclusions in the paper are present in the paper.

Introduction

Activation of quiescent B cells through antigen receptor engagement is essential to the generation of protective serological immunity. As presently understood, multivalent contact with the B cell receptor complex (BCR) triggers a series of biochemical events that result in transcription factor activation leading to a change in the resting program of gene expression (1, 2). Much previous work has shown that surface immunoglobulin (sIg) associated proteins (Ig α /CD79a, Ig β /CD79b) direct activation of Src-like kinases that initiate intracellular signaling which propagates through a collection of proximal mediators grouped together as the signalosome, thereby eliciting downstream events that affect gene expression (3). This paradigm, built on extensive biochemical study (here termed the classical pathway) is based mostly on examination of naïve B cells *in vitro*, activated by BCR triggering alone, and thus is not directly applicable to immune system physiology *in vivo*, where B cells do not encounter antigen as an isolated, sterile event but instead integrate multiple receptor-mediated influences before, during and after antigen contact.

Chief among the factors that can influence BCR-triggered B cell stimulation is the pleiotropic cytokine, IL-4. IL-4 is produced by Tfh cells as well as other cell types and has been known for many years to play an important role in B cell physiology by enhancing proliferation induced by BCR engagement, among many other activities (4–11). We began studying the mechanism by which IL-4 affects BCR signaling over 15 years ago and have reported our findings in a series of publications (12–18). We found that prior exposure to IL-4 alters subsequent BCR signaling so that downstream events can proceed in a signalosome-independent fashion. For example, whereas PI-3K inhibition with LY294002 blocks anti-Ig-stimulated ERK phosphorylation, a completely different situation is evident when anti-Ig stimulation follows IL-4 treatment; after IL-4 for 6–24 hours, BCR-triggered ERK phosphorylation is not interrupted by PI-3K inhibition (12). Similar results are obtained with the PLC inhibitor U73122, with the PKC inhibitor Go6976, and with B cells drawn from mice lacking PKC β (12, 16). In all such cases, anti-Ig stimulation of ERK phosphorylation that is normally blocked by inhibition or deletion of a signalosome element persists when anti-Ig stimulation follows IL-4. In other words, B cell exposure to IL-4 results in creation of a signalosome-independent, alternate pathway for BCR-initiated signal propagation to ERK, whereas IL-4 alone has no effect on ERK phosphorylation (17). However, the IL-4-induced alternate pathway for BCR signaling does not replace the classical pathway but operates in parallel with it (16). Importantly, Lyn is absolutely required for BCR-triggered alternate pathway signaling to pERK, whereas Lyn is dispensable for classical pathway signaling which takes place via other Src-family kinases in its absence (16, 19–21). The conjoint action of IL-4R and BCR in generating alternate pathway signaling represents a form of signal integration within B cells.

In the course of elucidating the range of alternate pathway activity, we found that, after IL-4 treatment, anti-Ig induces tyrosine phosphorylation of the novel PKC, PKC δ (specifically pTry311) whereas anti-Ig treatment alone completely fails to do so (13). Phosphorylation of PKC δ adds a new dimension and further refinement to the alternate pathway because here deletion of signalosome-independent signaling does not rely on a chemical inhibitor or genetic manipulation to quench concurrent signalosome-dependent (classical) signaling.

Since phosphorylation of PKC δ occurs only when BCR triggering follows IL-4 treatment, this phosphorylation is a unique indicator of alternate pathway signaling. Moreover, complete absence of PKC δ does not disturb BCR signaling to pERK in IL-4-treated B cells, indicating that phosphorylation of PKC δ is a separate and distinct branch of non-classical, alternate pathway signal propagation (16). We showed that PKC δ phosphorylation produces activation of PKD and phosphorylation of HDAC5/7, indicating the importance of this branch to molecular events (13). Like the alternate pathway leading to pERK, the alternate pathway leading to pPKC δ absolutely requires Lyn (13). Thus, Lyn appears to act as a gatekeeper that provides the means for BCR signals to travel via the alternate pathway in its various forms.

The unique quality of PKC δ phosphorylation as an outcome of alternate pathway signaling (when anti-Ig follows IL-4), that does not occur during classical pathway signaling (when B cells are stimulated by anti-Ig alone), presented an opportunity to explore how the alternate pathway works. In particular, Lyn and PKC δ are present in naïve B cells in the same amounts as are present after B cells are exposed to IL-4 for 24 hours (13). This raised the question of why PKC δ is not phosphorylated after anti-Ig stimulation alone, considering that the key constituents are readily available, and how PKC δ phosphorylation comes about. In the work described below, we discovered two unexpected elements responsible for PKC δ phosphorylation via the alternate pathway. We found that IL-4 alone induces Lyn phosphorylation and activation. We found that BCR triggering induces PKC δ translocation from the cytosol to the membrane (where Lyn is located), but that this occurs only when anti-Ig follows IL-4. These findings illuminate key mechanistic features of the IL-4-induced alternate pathway for BCR signaling and represent a molecular pathway for intracellular integration of signals derived from separate and distinct receptors.

Material and Methods

Animals:

Eight to fourteen week old male BALB/cByJ and C57BL/6J mice were obtained from The Jackson Laboratory. Lyn-deficient mice on the C57BL/6 background have been described previously (20). Animals were rested and handled in accordance with National Institutes of Health and institutional guidelines, and studies with these mice were approved by the Institutional Animal Care and Use Committee.

B cell purification:

Spleen cell suspensions were prepared from euthanized mice and total B cells were purified by negative selection using magnetic-activated cell sorting (Miltenyi Biotec) according to the manufacturer's instructions.

B cell stimulation:

Purified B cells were cultured at 2×10^6 per ml in RPMI 1640 medium supplemented with 5% FCS, 10 mM HEPES, 2 mM L-glutamine, 0.1 mg/ml penicillin and streptomycin, and 50 μ M 2-ME as described previously (12). B cells were treated with IL-4 (20 ng/ml) for different periods of time. B cells were stimulated by F(ab')₂ goat anti-mouse IgM at

15 µg/ml (anti-Ig). B cells were stimulated with anti-Ig after incubation in medium alone for 3 h, or after incubation with IL-4 for 24 h, followed by incubation in medium for 3 h. Inhibitors were added 1 h before stimulation with anti-Ig.

Western immunoblot analysis:

Whole cell lysates from B cells were prepared by using NP-40 lysis buffer supplemented with phosphatase (phosphoSTOP) and Complete protease inhibitor cocktails (Roche Inc.). The samples were denatured by boiling at 100°C for 10 min in 1X SDS-PAGE sample buffer supplemented with β-mercaptoethanol. Equal amounts of protein samples were resolved by SDS-PAGE and transferred to PVDF membranes as described previously (12). Immunoreactive proteins were detected by ECL (Amersham Biosciences) using specific antibodies. Immunoblots were stripped and re-probed with control Ab to verify that equal amounts of protein were loaded in each lane.

Immunoprecipitation:

A total of 2 million naive or IL-4-treated B cells were stimulated with 15 µg/ml F(ab')₂ fragments of anti-IgM antibody for 10 min, and stimulation was terminated with ice-cold PBS. The cells were collected and lysed with buffer containing 20 mM Tris (pH 7.5), 150 mM NaCl, 1 mM EDTA, 1 mM EGTA, 1% Triton X-100, 2.5 mM Sodium pyrophosphate, 1 mM β-glycerophosphate, 1 mM Na₃VO₄, 1 µg/ml Leupeptin and supplemented with Complete C protease inhibitor cocktail (Roche Inc.). The clear lysates were incubated with anti-Lyn or anti-IL-4Rα antibody with gentle rocking overnight at 4°C. The immunocomplex was further incubated with protein A/G agarose beads (Thermo Scientific) with gentle rocking for 2 hr at 4 ±C. The beads were washed 3 times with lysis buffer and twice with kinase buffer (25 mM Tris (pH 7.5), 5 mM β-glycerophosphate, 2 mM DTT, 0.1 mM Na₃VO₄, 10 mM MgCl₂).

Co-immunoprecipitation.

A total of 10 million naive or IL-4-treated B cells were collected and lysed with buffer containing 20 mM Tris (pH 7.5), 150 mM NaCl, 1 mM EDTA, 1% Digitonin, 2.5 mM Sodium pyrophosphate, 1 mM β-glycerophosphate, 1 mM Na₃VO₄, and supplemented with Complete C protease inhibitor cocktail (Roche Inc.). The clear lysates were directly incubated with protein A/G agarose beads (Thermo Scientific) to immunoprecipitate BCR. To immunoprecipitate IL-4R, the clear lysates were incubated with anti-IL-4Rα antibody with gentle rocking overnight at 4°C. The immunocomplex was further incubated with protein A/G agarose beads with gentle rocking for 2 hr at 4 ±C. The beads were washed 3 times with lysis buffer.

***In vitro* kinase assay:**

Immunoprecipitated Lyn was resuspended in 40 µl kinase buffer supplemented with 200 µM ATP and mixed with recombinant mouse PKCδ (1 µg per reaction; Sino Biological). The reaction mixtures were incubated for 30 min at 30°C. The reactions were quenched with 10 µl 5X SDS sample buffer and vortexed, after which samples were heated to 100°C for 10 minutes. Samples were centrifuged at 300 × g for 30 seconds and supernatants were resolved

on SDS-PAGE. Immunoblotting was performed using phospho-PKC δ (pTyr311) antibody to detect Lyn-mediated phosphorylation of PKC δ . In some experiments, immunoprecipitated Lyn was incubated with ATP and western blotted with anti-pTyr396Lyn.

Subcellular extraction of proteins:

Subcellular extraction of proteins was carried out by using the Subcellular Proteome Extraction Kit (ProteoExtract®; Calbiochem) according to the manufacturer's instructions with minor modifications. Briefly, a total of 20 million unstimulated and anti-Ig stimulated (15 μ g/ml for 10 min) naïve and IL-4 treated B cells were harvested and washed with 1 mL ice-cold wash buffer. Pellets were resuspended in 0.5 mL ice-cold Extraction Buffer I supplemented with protease and phosphatase inhibitor cocktails. The mixtures were incubated for 10 min at 4°C on a rotary shaker. Samples were centrifuged at 1000 \times g at 4°C for 10 min and the cytosolic protein fractions were collected without disturbing insoluble material. Insoluble material was resuspended in 0.5 ml ice-cold Extraction Buffer II supplemented with protease and phosphatase inhibitor cocktails. The mixtures were incubated for 30 min at 4°C on a rotary shaker. The mixtures were centrifuged at 6000 \times g at 4°C for 10 min and the membrane protein fractions were collected without disturbing the insoluble material. Similarly, nuclear proteins and cytoskeleton fractions were enriched with Extraction Buffer III and Extraction Buffer IV; respectively according to the manufacturer's instructions.

Reagents:

Affinity-purified F(ab')₂ fragments of polyclonal goat anti-mouse IgM (anti-Ig), and HRP-conjugated goat anti-rabbit secondary antibodies, were obtained from Jackson ImmunoResearch Laboratories. Anti-phospho-PKC δ (pTyr311), anti-PKC δ , anti-phospho-Lyn (pTyr507), anti-Lyn, anti-phospho-Fyn (pTyr530), anti-Fyn, anti-phospho-Blk (pTyr389), anti-Blk, anti-phospho-Syk (pTyr352), anti-Syk, anti-phospho-Src (pTyr416), anti-Src anti-JAK1, anti-JAK3, anti-GAPDH, and anti-actin Abs for immunoblotting were obtained from Cell Signaling Technology. Anti-phospho-Lyn (pTyr396) was obtained from Abcam. Protein A/G ultralink resin was obtained from Thermo Scientific. LY294002, was obtained from Calbiochem. PP2 and PP3 were obtained from abcam. SU6656 was obtained from Santa Cruz Biotechnology. Recombinant murine IL-4 and goat anti-IL-4R α antibody was obtained from R&D Biosystems. HRP-conjugated rabbit anti-goat secondary antibody, was obtained from southern biotech.

Statistical analysis

Statistical analysis was performed using GraphPad Prism version 8 software (GraphPad Software Inc., USA). The data were analyzed by unpaired t test. *p* values of < 0.05 were considered statistically significant. *, *p* < 0.05; **, *p* < 0.01 and ***, *p* < 0.001.

Results

PKC δ is phosphorylated *in vitro* by Lyn from IL-4-treated B cells

Phosphorylation of PKC δ on tyrosine311 via the alternate pathway, triggered by anti-Ig in IL-4-treated B cells, was blocked by the Src kinase inhibitor, PP2, but not by its

inactive analog, PP3 (Fig 1A). Although not unexpected, this together with the requirement for Lyn, and previous co-IP results, raised the possibility that Lyn itself might directly phosphorylate PKC δ (13). We used *in vitro* kinase assays to test this possibility. We immunoprecipitated Lyn from 4 groups of B cells—B cells incubated in medium for 3 hours (naïve B cells); naïve B cells stimulated with anti-Ig for 10 minutes; B cells incubated with IL-4 for 24 hours followed by medium for 3 hours (IL-4-treated B cells); and IL-4-treated B cells stimulated with anti-Ig for 10 minutes—and tested immunoprecipitated Lyn for its ability to phosphorylate PKC δ in the presence of ATP. As expected, we found that Lyn immunoprecipitated from IL-4-treated B cells stimulated with anti-Ig (anti-Ig/IL-4) phosphorylated PKC δ whereas Lyn immunoprecipitated from naïve B cells, and naïve B cells stimulated with anti-Ig, failed to phosphorylate PKC δ (Fig 1B). We also found, most unexpectedly, that Lyn immunoprecipitated from IL-4-treated B cells, that had not been stimulated with anti-Ig, phosphorylated PKC δ to a similar extent as Lyn from IL-4-treated B cells that had been stimulated with anti-Ig. In other words, B cell treatment with IL-4 was all that was needed (and BCR triggering was not needed) for Lyn to acquire the ability to phosphorylate PKC δ *in vitro* in the absence of any other cellular constituents. However, this contrasts with the situation in whole cells, wherein PKC δ phosphorylation occurs when IL-4 treated B cells are stimulated with anti-Ig, but not when B cells are treated with IL-4 alone or anti-Ig alone (Fig 1C). This unexpected result raised the question of how IL-4 alone induces competence for Lyn kinase to phosphorylate PKC δ *in vitro*, but not *in vivo* in intact B cells.

Lyn is phosphorylated by B cell exposure to IL-4

IL-4-induced Lyn competence for PKC δ phosphorylation *in vitro* could simply reflect Lyn activation resulting from tyrosine 396 phosphorylation. To address this possibility, we treated freshly purified B cells with IL-4, prepared lysates, and then separated proteins by PAGE followed by western blotting for Lyn(pTyr396). We found that IL-4 treatment produced abundant phosphorylation of Lyn(pTyr396) with minimal phosphorylation of the Lyn inhibitory tyrosine at 507 (Fig 2A–D). Having established a connection between IL-4 and pLyn, we examined the speed with which that connection is made. In time course experiments we showed that IL-4-induced Lyn phosphorylation is evident within 15 minutes of B cell exposure to IL-4 (Fig 2E and F). This rapid IL-4-induced Lyn phosphorylation does not appear to involve interaction with the BCR as evidenced by co-immunoprecipitation experiments in which we found no evidence for co-localization of IL-4R and BCR before or after IL-4 treatment (Supplementary Fig. 1). In keeping with this rapid Lyn phosphorylation, exposure of B cells to IL-4 for as little as 1 hour is sufficient to set in motion events that lead to PKC δ phosphorylation after anti-Ig stimulation (Supplementary Fig. 2). Importantly, Lyn phosphorylation induced by IL-4 is selective, in that B cell tyrosine kinases including Syk, Src and other Src-family kinases, including Fyn and Blk, are not phosphorylated by B cell treatment with IL-4 for periods up to 24 hours (Supplementary Fig. 3), although phosphorylation of Syk was increased to a small but significant extent. It is notable that the levels of Lyn, Fyn and Blk are not changed by B cell treatment with IL-4 (Fig. 2D,E,F and Supplementary Fig. 3F,G,H). However, we observed some downregulation in Syk (Supplementary Fig. 3A, C). This observation is consistent with previously published data (37). The short time frame for induction of Lyn(pTyr396) by IL-4 suggested that

Lyn may autophosphorylate following IL-4R activation. To test this notion, B cells were treated with IL-4 after which Lyn was immunoprecipitated, incubated with ATP, subjected to PAGE and western blotted with anti-Lyn(pTyr396). This *in vitro* kinase assay showed B cell treatment with IL-4 produced Lyn autophosphorylation (Fig 3A, B). Further probing showed that immunoprecipitated Lyn was not accompanied by JAK1 or JAK3, and IL-4-induced Lyn phosphorylation was blocked by src kinase inhibitors (Fig 3A, B). Consistent with this, we found that Lyn is associated with immunoprecipitated IL-4R α , and IL-4R α is associated with immunoprecipitated Lyn, before (and after) B cell treatment with IL-4 (Fig 3C, D). Although other participants cannot be ruled out, this suggests that a major source of phosphorylated Lyn lies in IL-4R-induced Lyn phosphorylation of itself. Overall, these results present the novel finding that IL-4 alone activates Lyn in B cells by rapidly inducing tyrosine 396 phosphorylation, at least in part via autophosphorylation. This IL-4 activated Lyn is capable of phosphorylating PKC δ *in vitro*; however, this does not occur in intact B cells unless IL-4 is followed by BCR triggering. Notably, the levels of Lyn and PKC δ are similar in unstimulated and IL-4-stimulated B cells.

PKC δ translocates and is phosphorylated after B cell treatment with IL-4 and anti-Ig

PKC δ has been reported to reside in various subcellular compartments, most prominently within the cytosol fraction, and to translocate among them under various stimulatory conditions (22–25), whereas Lyn resides in the membrane compartment (26, 27). We considered the possibility that location and translocation may constitute key elements in Lyn-mediated PKC δ phosphorylation. That is, we evaluated the possibility that activated kinase (Lyn) and its target (PKC δ), which react when brought together *in vitro*, are initially separated *in vivo* and only come together under a specific set of circumstances. To address this, we examined the location and phosphorylation of Lyn and PKC δ in naïve and IL-4-treated B cells, with and without subsequent anti-Ig stimulation.

We prepared cytosol and membrane protein extracts from 4 groups of B cells—B cells incubated in medium for 3 hours (naïve B cells); naïve B cells stimulated with anti-Ig for 10 minutes; B cells incubated with IL-4 for 24 hours followed by medium for 3 hours (IL-4-treated B cells); and IL-4-treated B cells stimulated with anti-Ig for 10 minutes—and examined Lyn, pLyn, PKC δ and PKC δ (pTyr311) by western blotting, along with GAPDH and CD79b as fractionation controls. We showed that fractions were well separated—GAPDH was completely localized to the cytosol fraction and there was no detectable GAPDH in the membrane fraction; CD79b was localized to the membrane fraction and there was vanishingly little CD79b in the cytosol fraction. As previously reported, Lyn and PKC δ reside in different compartments in naïve B cells, with Lyn located in the membrane fraction and PKC δ located in the cytosol fraction (Fig 4). For the most part, Lyn remained in the membrane, and intracellular PKC δ remained in the cytosol, regardless of B cell treatment with anti-Ig, IL-4, or IL-4 followed by anti-Ig. Importantly, the latter two conditions led to changes in these two constituents (Fig 4A). IL-4 treatment, with or without subsequent anti-Ig stimulation, resulted in substantial phosphorylation of Lyn activation Tyr396, without phosphorylation of Lyn inhibitory Tyr507, in the membrane. Changes in PKC δ were perhaps more consequential. Anti-Ig stimulation of naïve B cells had no effect on PKC δ location or phosphorylation, as might be expected in view of our

data indicating that BCR-triggered classical pathway signaling does not result in pPKC δ . However, anti-Ig stimulation of IL-4-treated B cells resulted in the appearance of PKC δ and pPKC δ in the membrane. In other words, when BCR triggering follows IL-4, and only when it follows IL-4, some portion of PKC δ translocates to the membrane where it becomes phosphorylated, presumably by pLyn. Of note, separation of IL-4 and anti-Ig is not required for PKC δ phosphorylation inasmuch as this occurs equally well when IL-4-exposed B cells are not washed prior to anti-Ig stimulation, although long term treatment with both together is not effective (Supplementary Fig. 4). In sum, the translocation of a portion of PKC δ from cytosol to membrane then places activated Lyn kinase and PKC δ substrate in the same compartment, which may be thought of as mimicking *in vitro* phosphorylation of PKC δ by activated Lyn immunoprecipitated from IL-4-treated B cells, in which case these two constituents are artificially and physically forced together.

We further prepared cytosol and membrane protein extracts from 4 groups of B cells as above--naïve B cells, naïve B cells stimulated with anti-Ig, IL-4-treated B cells, and IL-4-treated B cells stimulated with anti-Ig--that were incubated with the PI-3K inhibitor LY294002 for 1 h before anti-Ig stimulation. We found that incubation of B cells with LY294002 before anti-Ig stimulation did not prevent membrane translocation and phosphorylation of PKC δ through the alternate pathway (Fig 4B, C). These data indicate that translocation and phosphorylation of PKC δ are PI-3K independent processes, like other aspects of alternate pathway signaling.

PKC δ translocation is independent of Lyn

These experiments do not rule out the possibility that PKC δ translocates after it becomes phosphorylated, rather than before, which could occur if some other kinase acts instead of, or in addition to, Lyn. To test this, we repeated the experimental conditions described above with splenic B cells obtained from Lyn KO mice, examining the location and phosphorylation of PKC δ . WT B cells for control conditions were obtained from C57BL/6 mice, the strain background for Lyn KO mice. As above, PKC δ was primarily located in the cytosol in naïve B cells and under all conditions of stimulation for B cells obtained from both WT and Lyn KO mice. Further, anti-Ig stimulation of IL-4-treated WT B cells resulted in the appearance of both PKC δ and pPKC δ in the membrane, as expected (Fig 5A). Results in Lyn-deficient B cells were revealing: anti-Ig stimulation of IL-4-treated Lyn KO B cells resulted in the appearance of PKC δ in the membrane, in the complete absence of phosphorylated PKC δ (Fig 5B). In other words, Lyn-deficiency separates and distinguishes PKC δ translocation from PKC δ phosphorylation. The results with Lyn KO B cells show that non-phosphorylated PKC δ is competent to translocate from cytosol to membrane, that PKC δ translocation to the membrane does not require Lyn, and that once in the membrane PKC δ is not phosphorylated in the absence of Lyn.

Discussion

Alternate pathway signaling for PKC δ phosphorylation, which does not occur in classical pathway signaling, has important implications for B cells because events downstream of PKC δ include activation of PKD and HDAC5/7 (13). The present work describes two

novel findings that elucidate the steps leading to pPKC δ . First, we have shown that B cell treatment with IL-4 alone rapidly produces tyrosine phosphorylation and activation of the Src-family kinase, Lyn, which is fully capable of phosphorylating Tyr311 on PKC δ . This IL-4-induced Lyn phosphorylation involves autophosphorylation, and occurs in a specific manner in which other Src family kinases are not similarly phosphorylated. Second, we have shown Lyn kinase phosphorylation of PKC δ is regulated by substrate translocation, which occurs when B cells treated with IL-4 are stimulated with anti-Ig. Such stimulated PKC δ translocation takes place in the complete absence of Lyn; and, Lyn activation without PKC δ translocation, as occurs after B cell exposure to IL-4 alone, fails to phosphorylate PKC δ . Thus, we describe a mechanism in which translocation of a specific substrate is the key event in the pathway leading to its phosphorylation and integrates signals emerging from two separate and distinct surface receptors. This may be a general mechanism for signal integration and receptor crosstalk, which may be a way of regulating the pace and/or intensity of protein interactions involved in signaling cascades or other enzyme:substrate events.

IL-4 has been known for some years to affect B cells and, in particular, to enhance some outcomes of BCR engagement. We have now shown that IL-4 induces activation of Lyn, which to our knowledge has not been previously described. Although Lyn is the most abundant Src-like kinase in B cells (28–31), Lowell and colleagues showed years ago that signaling via the classical, signalosome-dependent pathway occurs more or less normally in the absence of Lyn (19–21). In contrast, all aspects of alternate pathway signaling, including signaling for pPKC δ and pERK, are abolished in Lyn-deficient B cells and thus require Lyn (13, 14, 16). This requirement raises the question of selectivity in Src-family kinase activation and/or activity. Although the similarity among Src family kinases might suggest that any B cell Src-family kinase could phosphorylate any given target, and Fyn has been shown to phosphorylate PKC δ in a non-B cell type (32), our results suggest that other Src-family kinases cannot fulfill the role of activated Lyn kinase in the alternate pathway because other Src-family kinases fail to be activated by IL-4R engagement. A previous report on Lyn and Fyn provides a precedent for this, in that engagement of OX40L selectively suppresses Fyn activity but not Lyn activity, through recruitment of Csk leading to C-terminal inhibitory tyrosine phosphorylation (33). This could extend to other cytokines including IL-4 as suggested by the report that Chk (Csk homologous kinase) mRNA and protein is induced by IL-3, IL-4 and GM-CSF in monocytes [34]. Alternatively, as suggested by our results, Lyn may directly associate with IL-4R and then autophosphorylate, or IL-4R-binding may facilitate Jak-mediated phosphorylation. This has not been described in the literature, but it has been pointed out that a region in IL-4R α is similar to a region in IL-2R β that interacts with Src-family kinases (35), and that Lyn associates with the Epo receptor (36). Thus, the overall composition of active Src-family kinases could be altered in B cells that experience IL-4 (as opposed to antigen), leaving Lyn as the principal kinase that is activated to mediate alternate pathway signal propagation, explaining why the alternate pathway depends completely on Lyn whereas Lyn is compensated by other Src family kinases in the classical pathway. This does not, however, rule out the possibility of Lyn substrate preference for PKC δ that is not reproduced by other Src family kinases.

We previously showed that Lyn and PKC δ co-immunoprecipitate in B cells exposed to IL-4 and stimulated by anti-Ig, and that Lyn immunoprecipitated from B cells treated with IL-4 alone is active and fully capable of phosphorylating PKC δ *in vitro*. With active kinase and substrate present in IL-4 treated B cells, these results indicate that some other element precludes PKC δ phosphorylation under these conditions and is responsible for PKC δ phosphorylation when BCR triggering follows IL-4 treatment. The present work has addressed this element that underlies PKC δ phosphorylation in the alternate pathway and has defined a new and critical intermediary step of PKC δ translocation that is independent of Lyn kinase and substrate phosphorylation. However, the means by which PKC δ is mobilized by BCR triggering after IL-4, but not before, remains undefined.

In previous work we examined Lyn-proximal elements, namely surface immunoglobulin (sIg) associated proteins Ig α and Ig β , and we unexpectedly found that exposure to IL-4 alone induces marked upregulation of Ig β , and, to a lesser extent, of Ig α at the protein level due to enhanced translation (14). This has been confirmed by another group (37). Upregulation of Ig α and Ig β is accompanied by increased IgM maturation and a 2–3-fold increase in IgM on the B cell surface. Experiments with the BAL-17 B cell line confirmed that increased surface IgM is associated with increased BCR signaling for downstream events (14). These results raise the possibility that some or all aspects of the alternate pathway consist of elements already present in naïve B cells; whereas these elements require a higher strength of signal to become activated as compared with elements comprising the classical signaling pathway. In this view, the requirement for initial IL-4 to prepare B cells for BCR-triggered PKC δ translocation reflects IL-4 induction of increased Ig α /Ig β /sIgM, engagement of which produces increased signal strength that is able to overcome a barrier to engagement of elements and mechanisms that already exist in B cells and are triggered by BCR engagement if/when that triggering provides a sufficiently intense signal. However, the nature of those pre-existing elements responsible for PKC δ translocation remains unclear, and the relatively short period of time required for IL-4 exposure before BCR engagement produces PKC δ translocation weighs against this mechanism.

A previous report suggested that cholecystokinin induces PKC δ translocation from cytosol to membrane in rat pancreatic acinar cells (38). However, translocation of PKC δ in this model was a “single hit” event and separation of translocation from phosphorylation relied solely on a chemical inhibitor. The present study is the first to our knowledge to define a role for IL-4/BCR crosstalk and signal integration in PKC δ translocation. It is also the first to our knowledge to clearly differentiate PKC δ translocation from subsequent phosphorylation, to identify the kinase responsible for PKC δ phosphorylation in B cells, and to show that these two processes of translocation and phosphorylation operate separately in B cells; in these respects, our study is completely novel.

With IL-4R and BCR engagement, two receptor-generated signals acting sequentially are integrated through two distinct mechanisms to phosphorylate PKC δ . This raises the question of what situations might arise in which IL-4 stimulation precedes BCR engagement. It has been reported that serum IL-4 levels are measurable and elevated in cases of acute infection, trauma, and malignancy (39–43). In other words, in some clinical situations, B cells throughout the body may be exposed to IL-4, which would presumably involve

antigen-specific B cells before any antigen stimulation. Thus, it may be speculated that alternate pathway signaling represents a pathway for B cell activation *in extremis*. It may also be speculated that alternate pathway signaling represents a form of B cell memory, inasmuch as IL-4 can be removed yet subsequent BCR engagement still triggers alternate pathway signaling. Thus, the alternate pathway may participate in stimulating B cells in an environment of acute and/or severe illness, or even as a memory of exposure to IL-4.

In sum, PKC δ phosphorylation through the alternate pathway appears to consist of several discrete steps: 1. IL-4 induces Lyn phosphorylation and activation; 2. IL-4 followed by BCR engagement produces translocation of PKC δ from the cytosol to the membrane; 3. Activated Lyn in the membrane phosphorylates PKC δ in the membrane. A diagram illustrating these steps is shown as (Fig 6). Beyond the novel finding of Lyn activation after IL-4, this work identifies PKC δ translocation--only when BCR triggering follows IL-4 as a critical and necessary step in bringing about PKC δ phosphorylation during alternate pathway signaling and a means of integrating separate and distinct receptor signals. This work emphasizes the physiological importance of BCR signaling in the context of IL-4R engagement, in that some events such as PKC δ translocation only occur under conditions of dual receptor activity, and further emphasizes the role of substrate translocation among compartments as a key mechanism for regulating intracellular signaling. Moreover, target translocation for consummation of enzymatic activity, described here, may be a more general occurrence. This work on alternate pathway signaling can serve as a model for further investigation into physiological B cell activation inasmuch as B cells do not encounter antigen as an isolated, sterile event but instead integrate multiple receptor-mediated influences before, during and after antigen contact.

Supplementary Material

Refer to Web version on PubMed Central for supplementary material.

Acknowledgments

This work was supported by USPHS grant AI128464 awarded by the National Institutes of Health.

References

1. Niir H, and Clark EA 2002. Regulation of B-cell fate by antigen-receptor signals. *Nat Rev Immunol.* 2: 945–56. [PubMed: 12461567]
2. Gauld SB, Dal Porto JM, and Cambier JC 2002. B cell antigen receptor signaling: roles in cell development and disease. *Science.* 296: 1641–2. [PubMed: 12040177]
3. Fruman DA, Satterthwaite AB, and Witte ON 2000. Xid-like phenotypes: a B cell signalosome takes shape. *Immunity.* 13: 1–3. [PubMed: 10933389]
4. Paul WE 1997. Interleukin 4: signalling mechanisms and control of T cell differentiation. *Ciba Found Symp.* 204: 208–216; discussion 16–9. [PubMed: 9107423]
5. Rabin EM, Mond JJ, Ohara J, and Paul WE 1986. B cell stimulatory factor 1 (BSF-1) prepares resting B cells to enter S phase in response to anti-IgM and lipopolysaccharide. *J Exp Med.* 164: 517–531. [PubMed: 3487616]
6. Rabin EM, Ohara J, and Paul WE 1985. B-cell stimulatory factor 1 activates resting B cells. *Proc Natl Acad Sci U S A.* 82: 2935–2939. [PubMed: 3873071]

7. Howard M, Farrar J, Hilfiker M, Johnson B, Takatsu K, and Hamaoka T, et al. 1982. Identification of a T cell-derived B cell growth factor distinct from interleukin 2. *J Exp Med.* 155: 914–923. [PubMed: 6977612]
8. Burstein HJ, Tepper RI, Leder P, and Abbas AK 1991. Humoral immune functions in IL-4 transgenic mice. *J Immunol.* 147: 2950–2956. [PubMed: 1919000]
9. Erb KJ, Ruger B, von Brevern M, Ryffel B, Schimpl A, and Rivett K. 1997. Constitutive expression of interleukin (IL)-4 in vivo causes autoimmune-type disorders in mice. *J Exp Med.* 185: 329–339. [PubMed: 9016881]
10. Foote LC, Howard RG, Marshak-Rothstein A, and Rothstein TL 1996. IL-4 induces Fas resistance in B cells. *J Immunol.* 157: 2749–2753. [PubMed: 8816375]
11. Reinhardt RL, Liang HE, and Locksley RM 2009. Cytokine-secreting follicular T cells shape the antibody repertoire. *Nat Immunol.* 10: 385–393. [PubMed: 19252490]
12. Guo B, and Rothstein TL 2005. B cell receptor (BCR) cross-talk: IL-4 creates an alternate pathway for BCR-induced ERK activation that is phosphatidylinositol 3-kinase independent. *J Immunol.* 174: 5375–5381. [PubMed: 15843535]
13. Guo B, and Rothstein TL 2013. A novel Lyn-protein kinase Cdelta/epsilon-protein kinase D axis is activated in B cells by signalosome-independent alternate pathway BCR signaling. *Eur J Immunol.* 43: 1643–1650. [PubMed: 23457006]
14. Guo B, and Rothstein TL 2013. IL-4 upregulates Igalpha and Igbeta protein, resulting in augmented IgM maturation and B cell receptor-triggered B cell activation. *J Immunol.* 191: 670–677. [PubMed: 23776171]
15. Guo B, Zhang L, Chiorazzi N, and Rothstein TL 2016. IL-4 rescues surface IgM expression in chronic lymphocytic leukemia. *Blood.* 128: 553–562. [PubMed: 27226435]
16. Guo B, Blair D, Chiles TC, Lowell CA, and Rothstein TL 2007. Cutting Edge: B cell receptor (BCR) cross-talk: the IL-4-induced alternate pathway for BCR signaling operates in parallel with the classical pathway, is sensitive to Rottlerin, and depends on Lyn. *J Immunol.* 178: 4726–4730. [PubMed: 17404251]
17. Rothstein TL, and Guo B. 2009. Receptor crosstalk: reprogramming B cell receptor signalling to an alternate pathway results in expression and secretion of the autoimmunity-associated cytokine, osteopontin. *J Intern Med.* 265: 632–643. [PubMed: 19493057]
18. Guo B, Tumang JR, and Rothstein TL 2009. B cell receptor crosstalk: B cells express osteopontin through the combined action of the alternate and classical BCR signaling pathways. *Mol Immunol.* 46: 587–591. [PubMed: 18952291]
19. Chan VW, Lowell CA, and DeFranco AL 1998. Defective negative regulation of antigen receptor signaling in Lyn-deficient B lymphocytes. *Curr Biol.* 8: 545–553. [PubMed: 9601638]
20. Chan VW, Meng F, Soriano P, DeFranco AL, and Lowell CA 1997. Characterization of the B lymphocyte populations in Lyn-deficient mice and the role of Lyn in signal initiation and down-regulation. *Immunity.* 7:69–81. [PubMed: 9252121]
21. Hasegawa M, Fujimoto M, Poe JC, Steeber DA, Lowell CA, and Tedder TF 2001. A CD19-dependent signaling pathway regulates autoimmunity in Lyn-deficient mice. *J Immunol.* 167: 2469–2478. [PubMed: 11509585]
22. Mecklenbrauker I, Kalled SL, Leitges M, Mackay F, and Tarakhovskiy A. 2004. Regulation of B-cell survival by BAFF-dependent PKCdelta-mediated nuclear signalling. *Nature.* 431: 456–461. [PubMed: 15361883]
23. Steinberg SF 2004. Distinctive activation mechanisms and functions for protein kinase Cdelta. *Biochem J.* 384: 449–459. [PubMed: 15491280]
24. Gomel R, Xiang C, Finniss S, Lee HK, Lu W, and Okhrimenko H, et al. 2007. The localization of protein kinase Cdelta in different subcellular sites affects its proapoptotic and antiapoptotic functions and the activation of distinct downstream signaling pathways. *Mol Cancer Res.* 5: 627–639. [PubMed: 17579121]
25. Rybin VO, Guo J, Sabri A, Elouardighi H, Schaefer E, and Steinberg SF 2004. Stimulus-specific differences in protein kinase C delta localization and activation mechanisms in cardiomyocytes. *J Biol Chem.* 279: 19350–19361. [PubMed: 14970215]

26. Simons K, and Toomre D. 2000. Lipid rafts and signal transduction. *Nat Rev Mol Cell Biol.* 1: 31–39. [PubMed: 11413487]
27. Zacharias DA, Violin JD, Newton AC, and Tsien RY 2002. Partitioning of lipid-modified monomeric GFPs into membrane microdomains of live cells. *Science.* 296: 913–916. [PubMed: 11988576]
28. Gauld SB, and Cambier JC 2004. Src-family kinases in B-cell development and signaling. *Oncogene.* 23: 8001–8006. [PubMed: 15489917]
29. Xu Y, Harder KW, Huntington ND, Hibbs ML, and Tarlinton DM 2005. Lyn tyrosine kinase: accentuating the positive and the negative. *Immunity.* 22: 9–18. [PubMed: 15664155]
30. Hibbs ML, Tarlinton DM, Armes J, Grail D, Hodgson G, and Maglitto R, et al. 1995. Multiple defects in the immune system of Lyn-deficient mice, culminating in autoimmune disease. *Cell.* 83: 301–311. [PubMed: 7585947]
31. Nishizumi H, Taniuchi I, Yamanashi Y, Kitamura D, Ilic D, and Mori S, et al. 1995. Impaired proliferation of peripheral B cells and indication of autoimmune disease in lyn-deficient mice. *Immunity.* 3: 549–560. [PubMed: 7584145]
32. Panicker N, Saminathan H, Jin H, Neal M, Harischandra DS, and Gordon R, et al. 2015. Fyn Kinase Regulates Microglial Neuroinflammatory Responses in Cell Culture and Animal Models of Parkinson’s Disease. *J Neurosci.* 35: 10058–10077. [PubMed: 26157004]
33. Sibilano R, Frossi B, Suzuki R, D’Inca F, Gri G, and Piconese S, et al. 2012. Modulation of FcepsilonRI-dependent mast cell response by OX40L via Fyn, PI3K, and RhoA. *J Allergy Clin Immunol.* 130: 751–760 e2. [PubMed: 22564682]
34. Hiremath MM, Mikhael AI, Taylor LS, Musso T, and McVicar DW 2004. Complex regulation of the Csk homologous kinase (Chk) by IL-4 family cytokines and IFN-gamma in human peripheral blood monocytes. *Mol Immunol.* 41: 901–910. [PubMed: 15261462]
35. Nelms K, Keegan AD, Zamorano J, Ryan JJ, and Paul WE 1999. The IL-4 receptor: signaling mechanisms and biologic functions. *Annu Rev Immunol.* 17: 701–738. [PubMed: 10358772]
36. Ingley E, and Klinken SP 2006. Cross-regulation of JAK and Src kinases. *Growth Factors.* 24: 89–95. [PubMed: 16393697]
37. Mokada-Gopal L, Boeser A, Lehmann CHK, Drepper F, Dudziak D, and Warscheid B, et al. 2017. Identification of Novel STAT6-Regulated Proteins in Mouse B Cells by Comparative Transcriptome and Proteome Analysis. *J Immunol.* 198: 3737–3745. [PubMed: 28348271]
38. Tapia JA, Garcia-Marin LJ, and Jensen RT 2003. Cholecystokinin-stimulated protein kinase C-delta kinase activation, tyrosine phosphorylation, and translocation are mediated by Src tyrosine kinases in pancreatic acinar cells. *J Biol Chem.* 278: 35220–35230. [PubMed: 12842900]
39. DiPiro JT, Howdieshell TR, Goddard JK, Callaway DB, Hamilton RG, and Mansberger AR Jr. 1995. Association of interleukin-4 plasma levels with traumatic injury and clinical course. *Arch Surg.* 130: 1159–1162; discussion 62–3. [PubMed: 7487457]
40. Schmidt E, Bastian B, Dummer R, Tony HP, Brocker EB, and Zillikens D. 1996. Detection of elevated levels of IL-4, IL-6, and IL-10 in blister fluid of bullous pemphigoid. *Arch Dermatol Res.* 288: 353–357. [PubMed: 8818181]
41. Inoue N, Inoue M, Kuriki K, Yamaguchi H, Nagasawa H, and Mikami T T, et al. 1999. Interleukin 4 is a crucial cytokine in controlling Trypanosoma brucei gambiense infection in mice. *Vet Parasitol.* 86: 173–184. [PubMed: 10511099]
42. Wise GJ, Marella VK, Talluri G, and Shirazian D. 2000. Cytokine variations in patients with hormone treated prostate cancer. *J Urol.* 164: 722–725. [PubMed: 10953133]
43. Akpolat N, Yahsi S, Godekmerdan A, Demirbag K, and Yalniz M. 2005. Relationship between serum cytokine levels and histopathological changes of liver in patients with hepatitis B. *World J Gastroenterol.* 11: 3260–3263. [PubMed: 15929178]

Research highlights

- IL-4 treatment induces signalosome-independent alternate pathway for BCR signaling
- Lyn gets autophosphorylate after IL-4 treatment in membrane
- PKC δ translocate and phosphorylate by Lyn in membrane through the alternate pathway

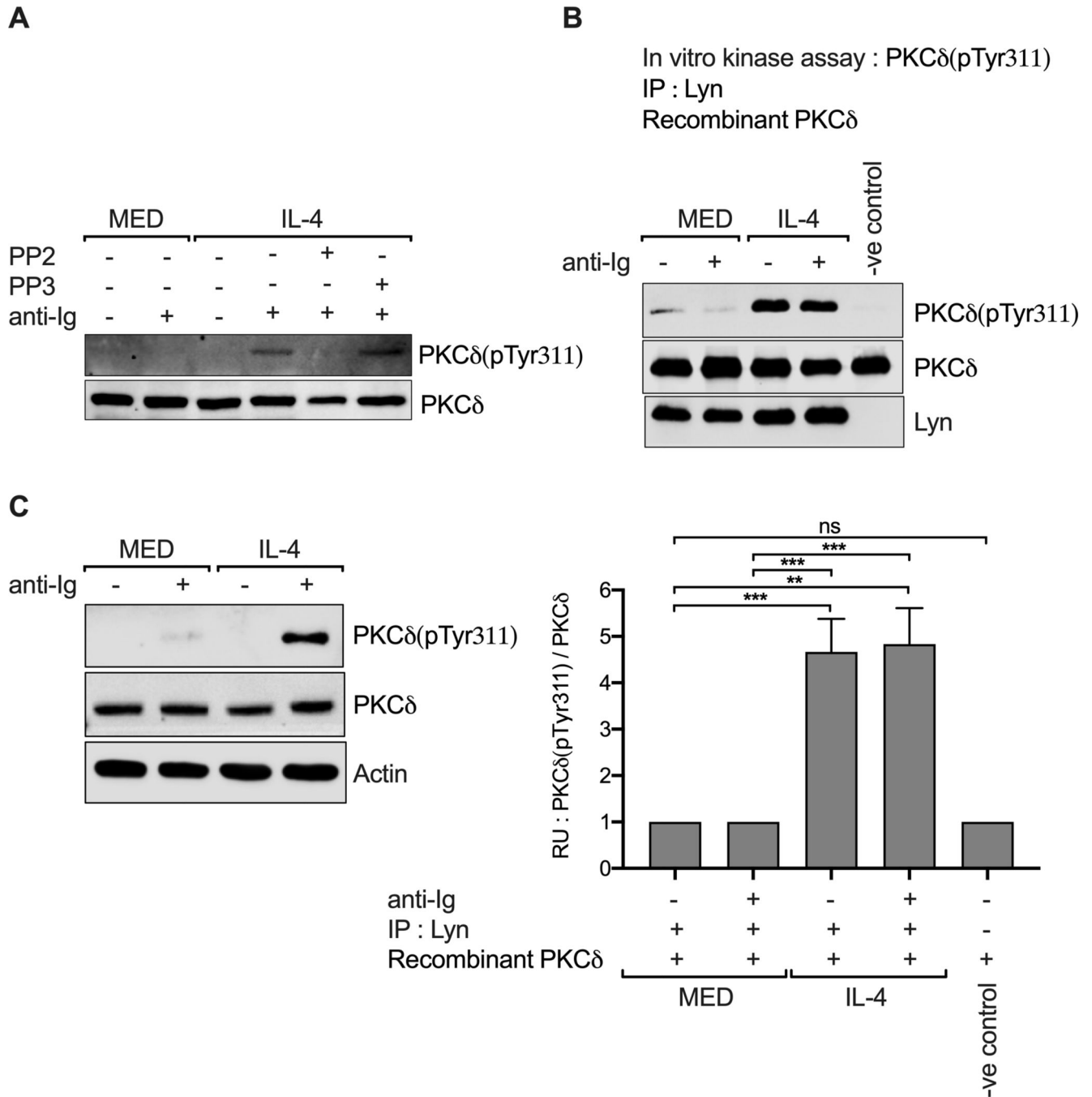


Figure 1: PKCδ is phosphorylated upon BCR stimulation in IL-4-treated B cells but not in untreated B cells.

(A) Phosphorylated PKCδ was analyzed by immunoblotting for PKCδ(pTyr311) in whole cell lysates from purified B cells cultured in medium for 3 h (MED) or incubated with IL-4 (20 ng/ml) for 24 h followed by anti-Ig (15 μg/ml) stimulation for 0 (-) or 10 (+) min in the presence or absence of 20 μM PP2 or PP3 (negative control for PP2) for 1 h before anti-Ig stimulation. Membranes were stripped and reprobbed with PKCδ-specific Ab as a loading control. (B). *In vitro* kinase assays were performed at 30±C for 30 min by

incubating immunoprecipitated Lyn from purified B cells cultured in medium for 3 h (MED) or treated with IL-4 for 24 h followed by anti-Ig stimulation for 0 (–) or 10 (+) min with recombinant PKC δ as substrate. Recombinant PKC δ alone was used as negative control. Immunoblotting with PKC δ (pTyr311)-specific Ab was used to analyze phosphorylation of PKC δ by Lyn. Membranes were stripped and re probed with PKC δ and Lyn-specific Abs as loading controls. The bar graph shows quantitation of PKC δ (pTyr311) normalized to PKC δ (pTyr311) from medium treated B cells, given a value of 1. (C) Purified B cells were cultured in medium for 3 h (MED) or incubated with IL-4 for 24 h followed by anti-Ig stimulation for 0 (–) or 10 (+) min. Whole cell lysates were analyzed by immunoblotting with an antibody directed against PKC δ (pTyr311). Membranes were stripped and re probed with PKC δ and β -actin specific Abs as loading controls. All experiments were performed at least two to three times with pooled B cells from two to three mice per group in each experiment, and data from a single representative experiment is shown. Values represent mean \pm SD. Unpaired t test was used to compare data obtained for MED (with or without anti-Ig) and IL-4 (with or without anti-Ig) treated B cells. *p* values of < 0.05 were considered statistically significant. *, *p* < 0.05 ; **, *p* < 0.01 and ***, *p* < 0.001 .

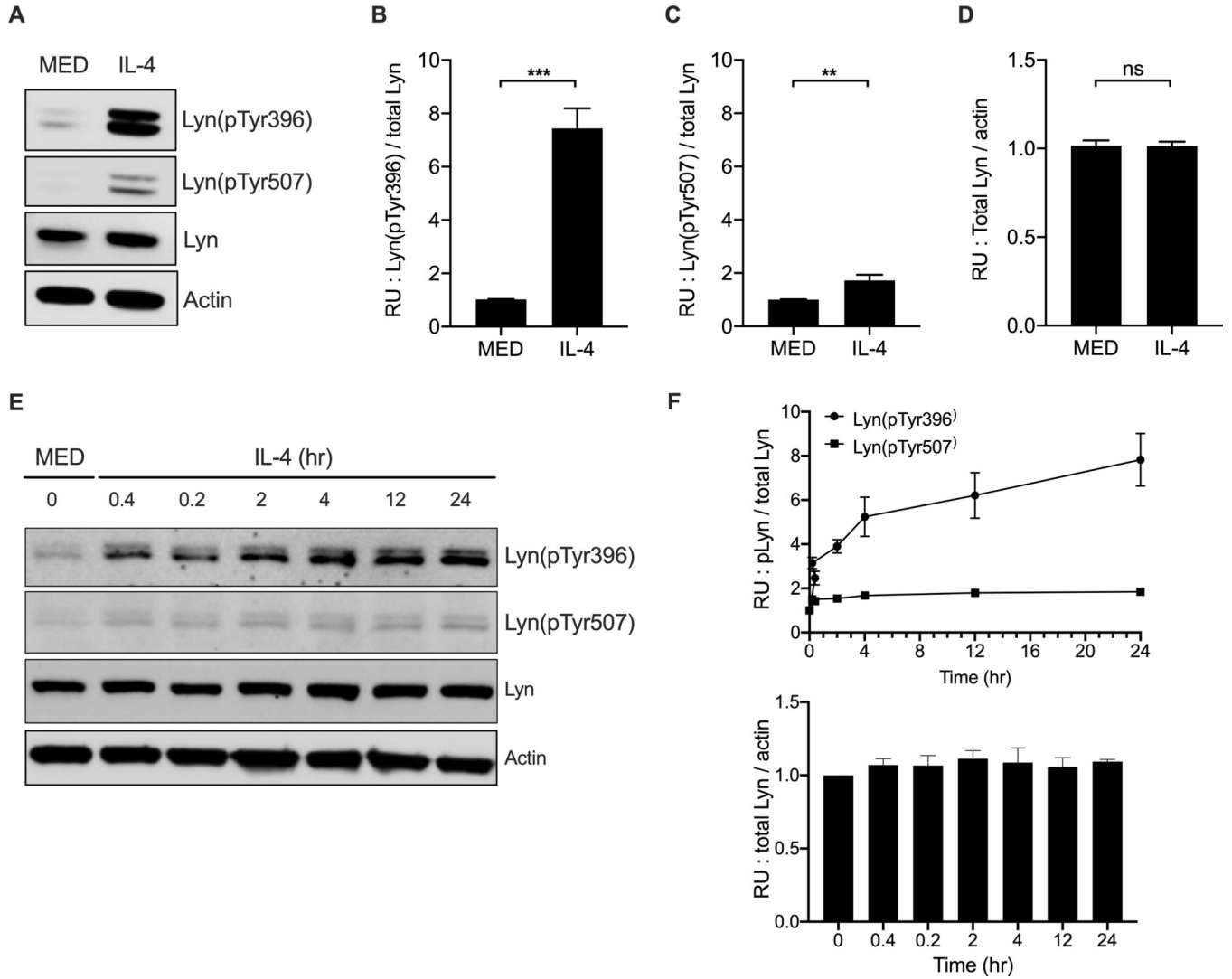


Figure 2: Lyn is phosphorylated in IL-4 treated B-cells.

(A) Lyn expression and phosphorylation were analyzed from freshly purified B cells cultured in medium for 3 h (MED) or incubated with IL-4 for 24 h by immunoblotting using Abs directed against Lyn (pTyr396 and pTyr507). Membranes were stripped and reprobbed with Lyn and β -actin specific Abs as a loading control. (B, C, D) Bar graphs show quantitation of Lyn(pTyr396) and Lyn(pTyr507) in relation to Lyn (B, C) and total Lyn in relation to actin (D), with values in untreated (MED) B cells set at 1. (E) Purified B cells were cultured in medium (MED; 0 min) or treated with IL-4 for the indicated time points, and whole cell lysates were subjected to immunoblotting using Abs directed against Lyn(pTyr396) and Lyn(pTyr507). Membranes were stripped and reprobbed with Lyn and β -actin specific Abs as a loading control. (F) Line graphs and bar graphs show Lyn(pTyr396) and Lyn(pTyr507) in relation to Lyn (top), and total Lyn in relation to β -actin (bottom), with values for untreated (MED, 0) B cells set at 1. All experiments were performed at least three to four times with pooled B cells from two to three mice per group in each experiment, and data from a single representative experiment is shown in A and E. Values represent mean \pm

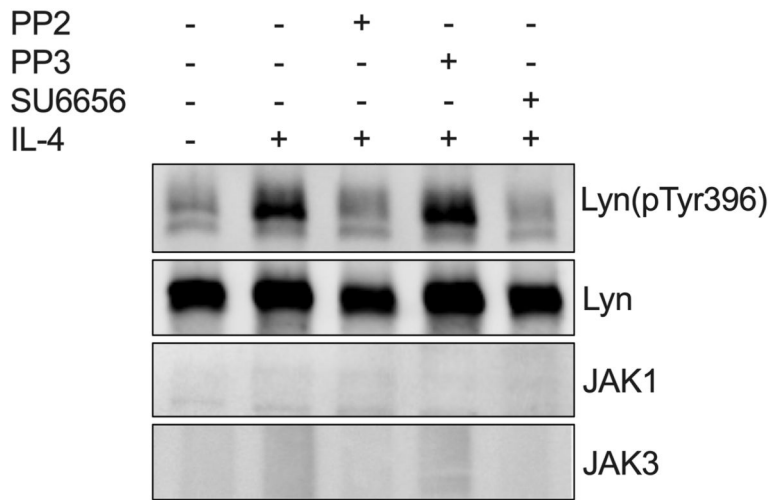
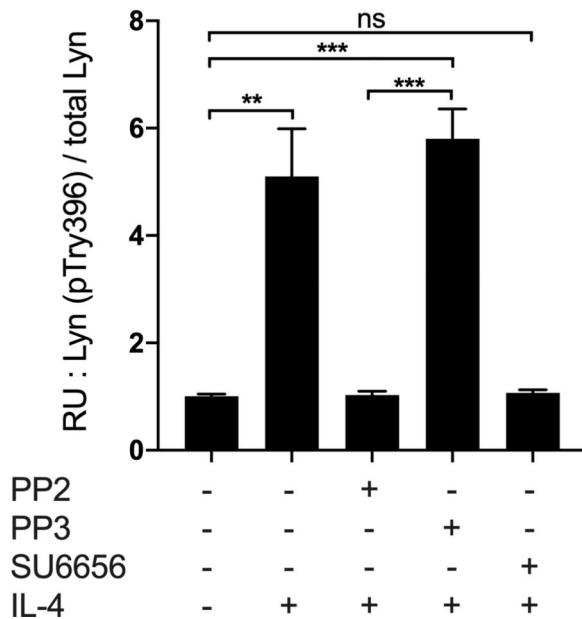
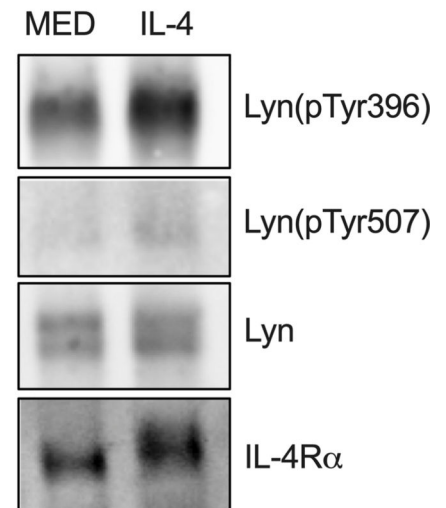
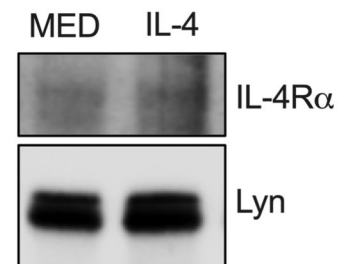
SD. Unpaired t test was performed to compare the data obtained for MED and IL-4 treated B cells. p values of < 0.05 were considered statistically significant. *, $p < 0.05$; **, $p < 0.01$ and ***, $p < 0.001$.

Author Manuscript

Author Manuscript

Author Manuscript

Author Manuscript

ALyn autophosphorylation : *in vitro* kinase assay**B****C**IP : anti-IL-4R α
IB : pLyn, Lyn and IL-4R α **D**IP : anti-Lyn
IB : Lyn and IL-4R α **Figure 3. Lyn from IL-4 treated B cells autophosphorylates.**

(A) Lyn autophosphorylation was evaluated by *in vitro* kinase assay at 30±C for 30 min by incubating immunoprecipitated Lyn from extracts of purified B cells cultured in medium for 3 h (-) or treated with IL-4 for 30 min in the presence of 20 μ M PP2 or PP3 (negative control for PP2) and a selective Src family kinase inhibitor SU6656 (10 μ M) for 1 h before IL-4 treatment. Immunoblotting with Lyn(pTyr396)-specific Ab was used to analyze Lyn autophosphorylation. Membranes were stripped and reprobed with Lyn-specific Ab as loading control. Further, the membrane was also stripped and reprobed with JAK1 and

JAK3-specific Abs to ensure that JAK kinases were not co-immunoprecipitated with Lyn. **(B)** Bar graphs show quantitation of Lyn(pTyr396) bands in relation to Lyn with the value of untreated B cells set at 1. **(C)** IL-4R α was immunoprecipitated from extracts of purified B cells cultured in medium for 3 h (MED) or treated with IL-4 for 30 min. Immunoprecipitants were immunoblotted with Lyn(pTyr396), Lyn(pTyr507) and Lyn-specific Abs. **(D)** Lyn was immunoprecipitated from extracts of purified B cells cultured in medium for 3 h (MED) or treated with IL-4 for 30 min with anti-Lyn Ab. Immunoprecipitants were immunoblotted with IL-4R α and Lyn-specific Abs. The experiment was performed at least three times with pooled B cells from three mice per group in each experiment, and data from a single representative experiment is shown. Values represent mean \pm SD. Unpaired t test was performed to compare the data obtained for MED and IL-4 treated B cells. *p* values of < 0.05 were considered statistically significant. *, *p* < 0.05 ; **, *p* < 0.01 and ***, *p* < 0.001 .

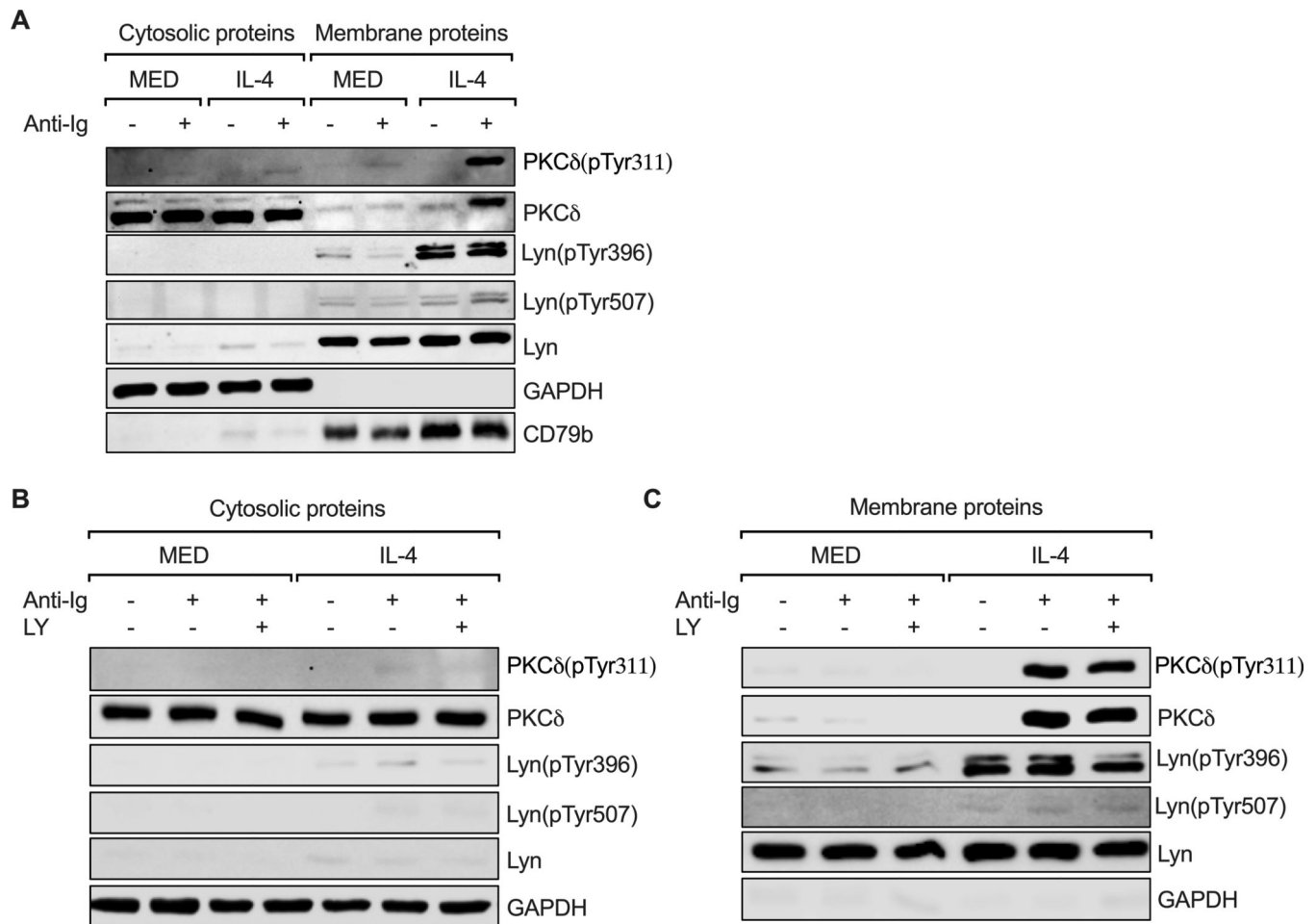


Figure 4: IL-4 and anti-Ig together induce membrane translocation and phosphorylation of PKCδ.

(A) Freshly purified B cells were cultured in medium for 3 h (MED) or treated with IL-4 for 24 h followed by anti-Ig stimulation for 0 (–) or 10 (+) min. Cytosolic and membrane protein extracts were prepared as described in Material and Methods. PKCδ protein expression and phosphorylation were measured by western blot analysis in cytosol and membrane extracts using Abs directed against PKCδ and PKCδ(pTyr311); respectively. Membranes were stripped and reprobbed with Abs directed against Lyn, Lyn(pTyr396) and Lyn(pTyr507). GAPDH and CD79b (Igβ) specific Abs were used to measure the purity of the extracts and as loading controls. (B and C) Freshly purified B cells were cultured in medium for 3 h (MED) or treated with IL-4 for 24 h followed by anti-Ig stimulation for 0 (–) or 10 (+) min in the presence or absence of PI3K inhibitor (LY294002 (LY) (10 μM)) for 1 h before anti-Ig stimulation. Cytosolic (B) and membrane (C) protein extracts were prepared as described in Materials and Methods. PKCδ protein expression and phosphorylation were measured by western blot analysis in cytosol and membrane extracts using Abs directed against PKCδ and PKCδ(pTyr311); respectively. Membranes were stripped and reprobbed with Abs directed against Lyn, Lyn(pTyr396), and Lyn(pTyr507). GAPDH-specific Ab was used to measure the purity of the extracts and as a loading control. The experiments were

performed at least three to four times with pooled B cells from three mice per group in each experiment, and data from a single representative experiment is shown.

Author Manuscript

Author Manuscript

Author Manuscript

Author Manuscript

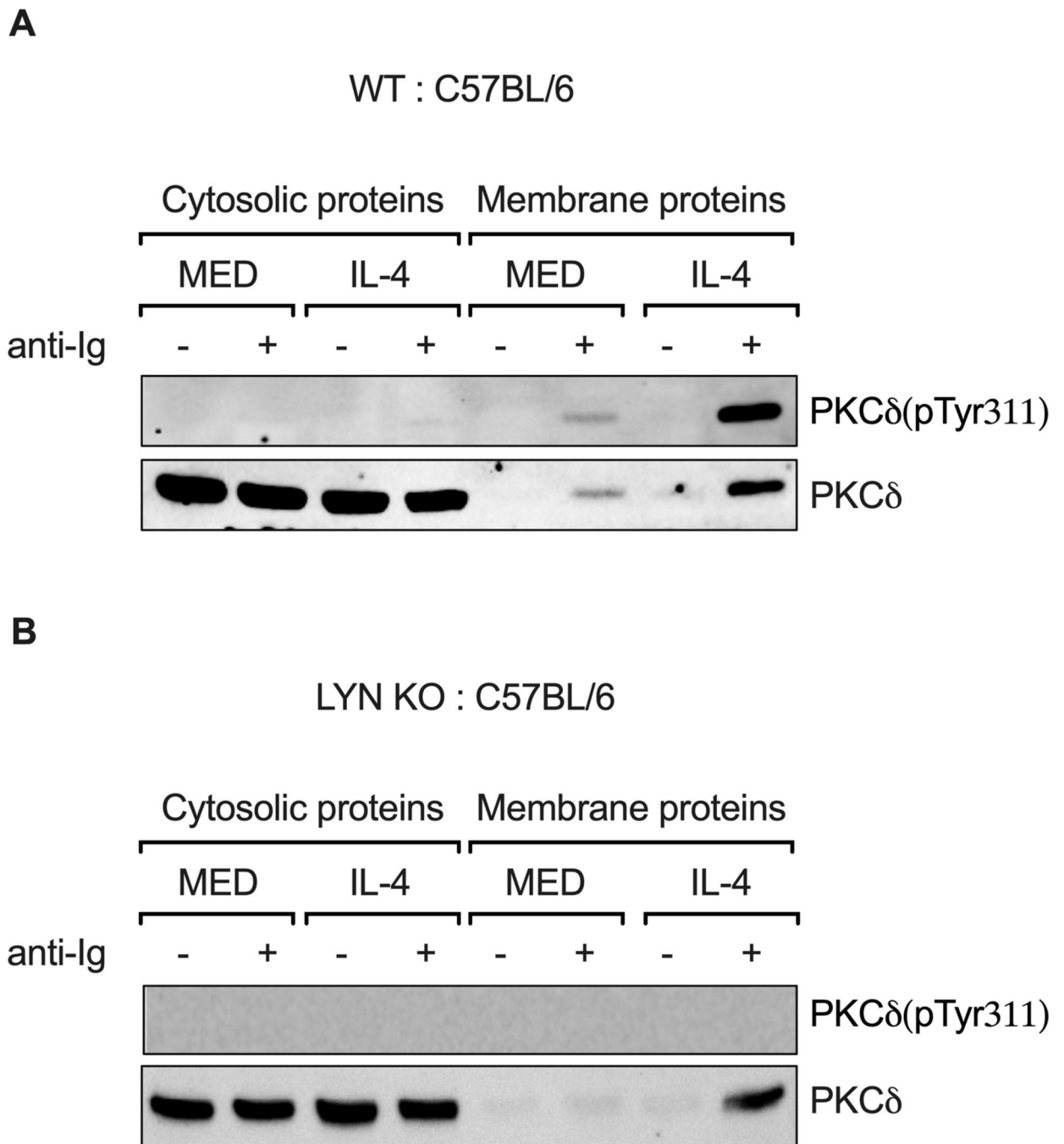


Figure 5: In the absence of Lyn, IL-4 and anti-Ig together induce membrane translocation but not phosphorylation of PKC δ .

Freshly purified B cells from WT (A) and Lyn KO (B) mice were cultured in medium for 3 h (MED) or treated with IL-4 for 24 h followed by anti-Ig stimulation for 0 (-) or 10 (+) min. Cytosolic and membrane protein extracts were prepared as described in Materials and Methods. PKC δ expression and phosphorylation were measured by immunoblotting using Abs directed against PKC δ and PKC δ (pTyr311); respectively. Experiments were performed

at least two to four times with pooled B cells from three to nine mice per group in each experiment, and data from a single representative experiment is shown.

Author Manuscript

Author Manuscript

Author Manuscript

Author Manuscript

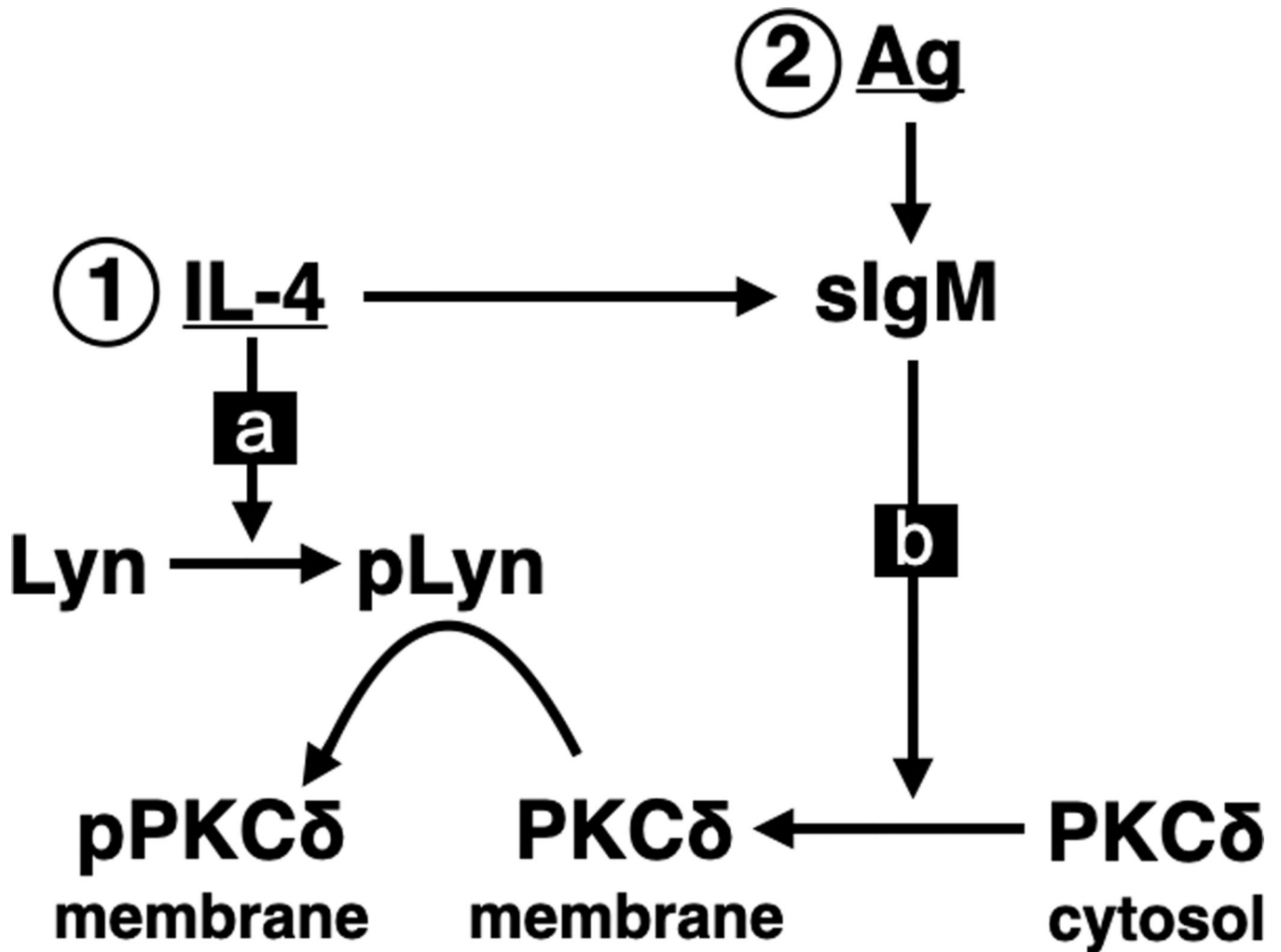


Figure 6. Signal integration by translocation and phosphorylation of PKC δ in the IL-4 induced alternate pathway for BCR signaling.

(1) The Lyn kinase directly associates with IL-4R α in the B cell membrane. Following IL-4 treatment, Lyn becomes activated through autophosphorylation. (2) BCR signaling after B cell exposure to IL-4 produces translocation of PKC δ from the cytosol to the membrane. Once colocalized in the membrane, phosphorylated and activated Lyn phosphorylates PKC δ , similar to what happens when activated Lyn is forced together with PKC δ protein *in vitro*. Note that neither IL-4 nor anti-Ig working alone produce this outcome, but together achieve this result, so this process appears to model a molecular form of signal integration.