

# UCLA

## UCLA Previously Published Works

### Title

Sustained human outbreak of a new MPXV clade I lineage in eastern Democratic Republic of the Congo.

### Permalink

<https://escholarship.org/uc/item/4x41b8rg>

### Journal

Nature Medicine, 30(10)

### Authors

Vakaniaki, Emmanuel

Kacita, Cris

Kinganda-Lusamaki, Eddy

et al.

### Publication Date

2024-10-01

### DOI

10.1038/s41591-024-03130-3

Peer reviewed

# Sustained human outbreak of a new MPXV clade I lineage in eastern Democratic Republic of the Congo

Received: 3 May 2024

Accepted: 11 June 2024

Published online: 13 June 2024

 Check for updates

A list of authors and their affiliations appears at the end of the paper

Outbreaks of monkeypox (mpox) have historically resulted from zoonotic spillover of clade I monkeypox virus (MPXV) in Central Africa and clade II MPXV in West Africa. In 2022, subclade IIb caused a global epidemic linked to transmission through sexual contact. Here we describe the epidemiological and genomic features of an mpox outbreak in a mining region in eastern Democratic Republic of the Congo, caused by clade I MPXV. Surveillance data collected between September 2023 and January 2024 identified 241 suspected cases. Genomic analysis demonstrates a distinct clade I lineage divergent from previously circulating strains in the Democratic Republic of the Congo. Of the 108 polymerase chain reaction-confirmed mpox cases, the median age of individuals was 22 years, 51.9% were female and 29% were sex workers, suggesting a potential role for sexual transmission. The predominance of APOBEC3-type mutations and the estimated emergence time around mid-September 2023 imply recent sustained human-to-human transmission.

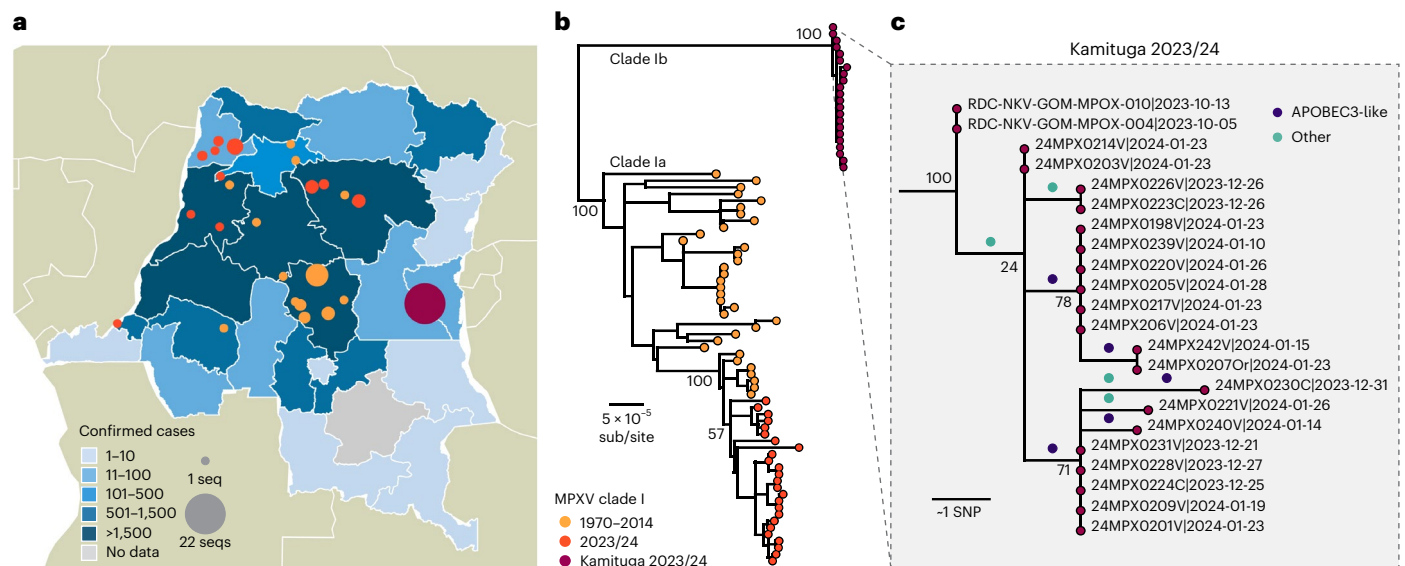
Monkeypox (mpox) attracted global attention in 2022 due to a widespread epidemic across nonendemic regions with transmission linked to sexual contact. For more than 50 years, mpox virus (MPXV) caused outbreaks in several endemic African countries, predominantly from zoonotic spillover with secondary transmission<sup>1</sup>. MPXV is an enveloped, double-stranded DNA virus of the *Poxviridae* family, which includes variola (the causative agent of smallpox, now eradicated), vaccinia (used in smallpox vaccination) and cowpox viruses. In humans, MPXV causes mpox, characterized by fever, lymphadenopathy and vesiculopapular rash. Two distinct genetic MPXV clades exist: clade I mainly in Central Africa, especially the Democratic Republic of the Congo (DRC), and is associated with severe clinical symptoms and substantial mortality (4–11%)<sup>2</sup>, whereas clade II, largely confined to West Africa until the 2022 global epidemic, causes less severe illness and lower mortality of <4% (ref. 2).

Historically, clade I MPXV has predominated, accounting for 95% of reported cases<sup>1</sup>. In 2017, a major outbreak of clade IIb MPXV occurred in Nigeria, with sustained human-to-human transmission, including through sexual contact<sup>3</sup>. These findings were overlooked until a

clade IIb lineage—B.1 (ref. 4)—spawned a global epidemic in May 2022, with 95,226 confirmed cases in 117 countries as of March 2024 (ref. 4). Genomic analyses of B.1 revealed a mutational pattern suggesting noncanonical evolution, driven by an apolipoprotein B messenger RNA editing enzyme, catalytic subunit 3 (APOBEC3) cytosine deamination, a characteristic feature of MPXV human-to-human transmission<sup>5,6</sup>. MPXV mutations have been confirmed in vitro as stemming from the apolipoprotein B mRNA editing enzyme, catalytic polypeptide-like 3F (APOBEC3F)<sup>7</sup>, suggesting that clade IIb entered human populations as early as 2015 (refs. 6,7). As of April 2024, the global clade IIb B.1 epidemic has largely subsided, although the virus continues to circulate in Nigeria and other countries<sup>4</sup>.

As clade II outbreaks have waned, clade I MPXV infections in Central Africa have been increasing<sup>4</sup>, especially in remote forest areas, probably from zoonotic spillover with secondary human-to-human transmission within households<sup>8,9</sup>. Progressive annual increases in mpox cases were reported in the DRC, with a record 14,626 cases in 2023, possibly indicating a shift toward increased human-to-human transmission<sup>10</sup>. We recently documented a cluster of MPXV infections linked

✉ e-mail: [jbn16@pitt.edu](mailto:jbn16@pitt.edu); [mbalaplacide@gmail.com](mailto:mbalaplacide@gmail.com)



**Fig. 1 | Mapping number of reported mpox cases and genomics analysis, Kamituga, DRC.** **a**, Map of the DRC with provinces colored by the number of reported cases. MPXV genomes available are indicated by colored circles (31 January 2024). These are placed at the centroid of the town, the health zone or the province depending on the precision of the recorded location. **b**, Maximum likelihood phylogeny of clade I genomes, including those from the present study (indicated as

2023/24 and Kamituga samples), with all previously sequenced genomes publicly available on GenBank. A version of this phylogeny where individual tips are labeled with accession numbers, locations and dates can be found in Supplementary Figs. 1 and 2. **c**, The Kamituga cluster with reconstructed mutations indicated on the branches. Mutations are colored by whether they are consistent with APOBEC3 deamination (dark blue) or not (green). sub/site, substitutions per site.

to sexual contact in the DRC<sup>11</sup>. Concurrently, new mpox cases have continued to emerge in several previously unaffected areas of the DRC. In September 2023, the first-ever mpox cases were detected in Kamituga Health Zone, a densely populated mining area in South Kivu Province in eastern DRC. Initial sequencing of six cases from January 2024 by Masirika et al.<sup>12,13</sup> revealed the presence of a divergent lineage of clade I. In this Brief Communication, we describe the results of an investigation into this outbreak, including detailed genomic analysis of cases dating back to September 2023, to elucidate the origins and nature of this event.

Between 29 September 2023, and 29 February 2024, South Kivu’s provincial surveillance authorities recorded 241 suspected cases that met the national case definition for mpox (Fig. 1a). Most cases (93%) were in Kamituga Health Zone. Laboratory specimens from 119 (48.9%) of the patients hospitalized for mpox were collected for polymerase chain reaction (PCR) testing. Of these, 108 (90.8%) were confirmed MPXV positive. Demographic characteristics and clinical manifestations were similar between suspected and confirmed cases (Supplementary Table 1).

Among individuals with PCR-confirmed mpox, the majority were female (56/108, 51.9%) and the median age was 22 years (interquartile range 18–27) (Fig. 1b). Children <15 years constituted 14.8% (16/108) of confirmed cases, individuals aged 15–30 years accounted for 67% (73/108), and 17.6% (19/108) of cases were individuals 30–49 years. Additionally, 28.7% (31/108) of the confirmed cases and 29.5% (71/241) of all suspected cases indicated sex work as their profession during the survey conducted by the provisional health authorities (Methods). None among individuals with confirmed mpox had been vaccinated against smallpox, which was eliminated in the DRC in 1971 with vaccination campaigns ending in 1980 (ref. 14).

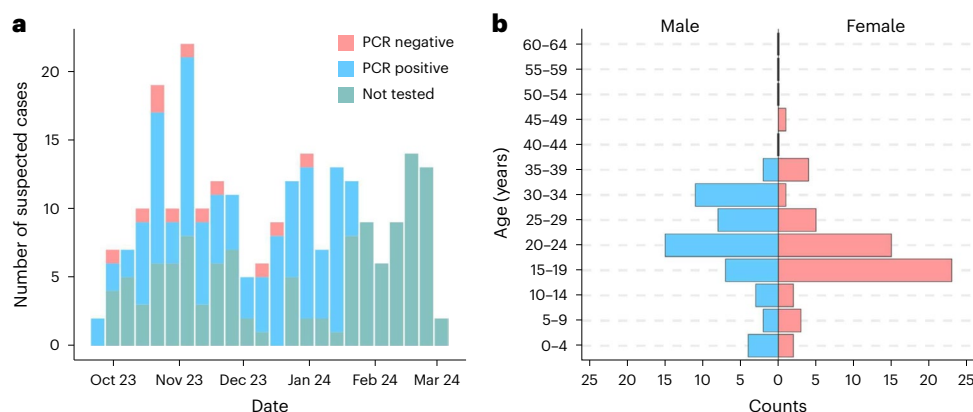
The DRC Ministry of Public Health’s investigation form for suspected mpox cases included a limited number of clinical variables. All confirmed cases had a cutaneous rash, 64/108 (59%) had fever and 45/108 (42%) had lymphadenopathy. Most suspected mpox cases (91%) were hospitalized mainly for isolation, not for disease severity. Among 108 confirmed cases, 10 (9.3%) were bedridden. We reviewed hospital records for 134 of 241 suspected cases to obtain additional clinical information. Human immunodeficiency virus status was known for 34.3% (46/134),

with 6.5% (3/46) positive. Eighty-five percent (114/134 patients) had genital lesions. Two patients with mpox (1.4%) died during hospitalization.

Near-full-length MPXV genome sequences, including 12 with genome coverage above 99%, 3 between 95% and 99%, 2 between 90% and 95% and 5 between 80% and 89% were obtained from 22 patients examined during the outbreak investigation. Genomic analysis revealed that all MPXV strains isolated from Kamituga clustered tightly with each other on a distinct lineage from previously sequenced clade I MPXV (Fig. 2a). The new lineage increases the known diversity of clade I by an additional 54%. Within the clade that previously encompassed the entirety of clade I, the maximum pairwise patristic distance totaled  $4.89 \times 10^{-4}$  substitutions per site (equivalent to ~96 individual nucleotide changes). With the inclusion of genomes from the Kamituga outbreak, this increased to  $7.55 \times 10^{-4}$  substitutions per site, or ~149 nucleotide changes. Sequences from two MPXV samples, collected in 2011 and 2012 during an mpox outbreak in North Kivu and South Kivu provinces<sup>15</sup>, clustered with the genomes sequenced in this study. However, due to limited genome coverage, their precise phylogenetic position relative to the Kamituga cluster could not be reliably determined.

The 22 MPXV genome sequences from Kamituga formed a compact cluster with 9 reconstructed mutations (Fig. 2b,c). Five of these mutations were consistent with APOBEC3-mediated cytosine deamination, indicating human-to-human transmission. Given the 8% rate of APOBEC3-like mutations in clade I MPXV in reservoir hosts, fewer than one APOBEC3-type mutation would be expected out of nine<sup>7</sup>. Furthermore, if MPXV in this cluster continued to evolve as observed in rodent host species, the binomial probability of observing five or more APOBEC3 mutations would be 0.0003. The predominance of APOBEC3-type mutations supports the finding that this entire cluster resulted from human-to-human transmission, while the low genomic diversity indicates a recent outbreak.

Molecular clock analysis, using the rate of evolution estimated for the human clade IIb MPXV outbreak<sup>7</sup>, estimates that the most recent common ancestor of the Kamituga genomes existed around mid-September 2023, consistent with the earliest reported cases. However, the credible intervals of this estimate cannot rule out a date as early as July 2023 (mean estimate 13 September 2023 with 95%



**Fig. 2 | Epidemiologic curve and mpx cases disaggregated by age and sex, Kamituga, DRC. a**, Epidemiologic curve of Kamituga mpx outbreak (October 2023 to March 2024), DRC. **b**, Counts of suspected mpx cases disaggregated by age and sex (male in blue, female in pink).

highest posterior density intervals of 9 July 2023 to 3 October 2023). The estimated exponential growth rate was 10.8 per year (doubling time 23 days), but the 95% highest posterior density intervals include zero.

To compare strains isolated in Kamituga with those from the rest of the country, we included an additional 25 isolates from other provinces, collected from late 2023 to early 2024. These sequences aligned with previous clade I diversity (proposed to be identified as clade Ia), indicating no connection to the Kamituga mpx outbreak (Fig. 2b). Furthermore, the proportion of APOBEC3-type mutations compared to other mutations in samples collected outside the Kamituga area was only 15.3% (15 of 98 observed mutations), suggesting limited human-to-human transmission in those areas.

This report describes a novel clade I MPXV lineage linked to sustained human-to-human transmission in an ongoing outbreak in eastern DRC. Identification of APOBEC3-related mutations—a hallmark of MPXV human-to-human transmission<sup>7</sup>—bolsters this assertion. Due to its distinct geographical location and phylogenetic divergence, we propose naming this lineage clade Ib, with the previously described clade I renamed clade Ia (clade I now encompassing both Ia and Ib). The distinction between clades IIa and IIb was made on the basis of a similar rationale<sup>16</sup>.

Of note, a large -1 kbp deletion in the MPXV genome ( $\Delta$ 19,128–20,270 coordinates relative to the clade I reference genome, GenBank accession NC\_003310) has been reported in genome sequences from Kamituga linked to this outbreak<sup>13</sup>, specifically in the OPG032 gene and interfering with the clade I-specific diagnostic PCR originally developed by Li et al.<sup>17</sup> The new genomes associated with the Kamituga outbreak also contain this deletion, implying that all genomes sampled from proposed clade Ib thus far exhibit this deletion and will not amplify with the specific diagnostic. Conversely, the MPXV clade Ia genomes we sampled from 2023/2024 did not contain this deletion. Two mpx samples from a 2011–2012 outbreak in North Kivu and South Kivu provinces<sup>15</sup> clustered with the Kamituga outbreak genomes, but only five gene fragments were sequenced (with no coverage of the deleted region). We cannot therefore affirm whether this is a recent deletion specific to this outbreak or whether it is a viral feature of a nonhuman animal reservoir for this lineage. Although the proposed clade Ib is currently only represented by genomes from the Kamituga outbreak, the short fragmentary sequences isolated from earlier zoonotic mpx cases in the area suggest that this lineage probably preexisted in a local, nonhuman animal reservoir<sup>15</sup>.

Strengths of our study include novel and high-quality viral genomic sequencing performed at quality-controlled national and international laboratories in endemic mpx regions. However, limitations include the sparse availability of comprehensive clinical and demographic patient information in this retrospective case series.

Despite these constraints, our data suggest that transmission in this outbreak was primarily linked to sexual contact: first, most affected individuals were adolescents and young adults, unlike previous DRC mpx outbreaks, in which children <15 years were most affected<sup>18,19</sup>; second, professional sex workers were disproportionately affected; finally, hospital records indicate that most cases presented with genital lesions compatible with viral infection.

The sustained spread of clade I MPXV in Kamituga, a densely populated, poor mining region, raises important concerns. The local healthcare infrastructure is ill-equipped to handle a large-scale epidemic, compounded by limited access to external aid. The 241 reported cases are probably an underestimate of the true incidence of mpx cases occurring in the area. In conversations with local healthcare workers, they reported that many additional people in the community had mpx symptoms but did not seek care.

Frequent travel occurs between Kamituga and the nearby city of Bukavu, with subsequent movement to neighboring countries such as Rwanda and Burundi. Moreover, sex workers operating in Kamituga represent several nationalities and frequently return to their countries of origin. Although there is no current evidence of wider dissemination of the outbreak, the highly mobile nature of this mining population poses a substantial risk of escalation beyond the current area and across borders. The international spread of clade I MPXV is particularly concerning due to its higher virulence compared to clade II. Among the 241 cases documented, two patients died, indicating a higher case fatality rate than the global clade IIb outbreak but lower than the current clade Ia outbreaks (4.6% reported among suspect cases in the DRC in 2024). This may be because clade Ib more often affects adults compared to clade Ia. However, additional data are needed to accurately assess clade Ib infection severity.

Our data confirm human-to-human transmission in MPXV genomes from Kamituga, supporting epidemiological findings of sexual contact transmission. However, this cluster of patients in Kamituga represents a minority of mpx cases reported during the 2022/2023 MPXV surge in the DRC. Genomic evidence demonstrates that most cases elsewhere in the country were not due to a single human outbreak or increased transmissibility from virus changes but instead due to several independent spillover events with subsequent secondary and onward transmission from reservoir hosts. The reason for this nationwide surge in cases remains unclear, and further investigation is needed to understand the drivers of these spillover events.

The situation in Kamituga mirrors the 2017–2018 outbreak of clade IIb MPXV in Nigeria. Without intervention, this localized outbreak has the potential to spread both nationally and internationally. Urgent measures are needed, including intensified local surveillance, enhanced community engagement and case management, and targeted mpx vaccination for individuals at risk, such as contacts of index

cases, healthcare workers and key populations, including sex workers and men who have sex with men<sup>20</sup>.

Given the recent history of Mpox outbreaks in the DRC, urgent action is required from both endemic countries and the international community to prevent the broader geographic spread of clade I MPXV, both regionally and globally, with particular emphasis on addressing the needs of vulnerable key populations. Consequently, we have established the African-led, multidisciplinary, multicountry Mpox Research Consortium (MpoxReC) with the overarching goal of establishing a research network to advance the elimination of Mpox as a public health concern<sup>20</sup>. Key research priorities include further characterization of the new MPXV clade Ib, understanding transmission modes and disease severity, and evaluating point-of-care rapid diagnostic tests, prevention and treatment strategies accessible to populations at risk of severe disease. This comprehensive approach aims to improve both individual and epidemic outcomes.

### Online content

Any methods, additional references, Nature Portfolio reporting summaries, source data, extended data, supplementary information, acknowledgements, peer review information; details of author contributions and competing interests; and statements of data and code availability are available at <https://doi.org/10.1038/s41591-024-03130-3>.

### References

1. Van Dijck, C. et al. Emergence of mpox in the post-smallpox era—a narrative review on mpox epidemiology. *Clin. Microbiol Infect.* **29**, 1487–1492 (2023).
2. Bunge, E. M. et al. The changing epidemiology of human monkeypox—a potential threat? A systematic review. *PLoS Negl. Trop. Dis.* **16**, e0010141 (2022).
3. Ogoina, D. et al. The 2017 human monkeypox outbreak in Nigeria—report of outbreak experience and response in the Niger Delta University Teaching Hospital, Bayelsa State, Nigeria. *PLoS ONE* **14**, e0214229 (2019).
4. 2022–24 mpox (monkeypox) outbreak: global trends. *World Health Organization* (2024); [https://worldhealthorg.shinyapps.io/mpx\\_global/](https://worldhealthorg.shinyapps.io/mpx_global/)
5. Isidro, J. et al. Phylogenomic characterization and signs of microevolution in the 2022 multi-country outbreak of monkeypox virus. *Nat. Med.* **28**, 1569–1572 (2022).
6. O’Toole, Á. et al. APOBEC3 deaminase editing in mpox virus as evidence for sustained human transmission since at least 2016. *Science* **382**, 595–600 (2023).
7. Suspène, R. et al. APOBEC3F is a mutational driver of the human monkeypox virus identified in the 2022 outbreak. *J. Infect. Dis.* **228**, 1421–1429 (2023).
8. Whitehouse, E. R. et al. Clinical and epidemiological findings from enhanced monkeypox surveillance in Tshuapa Province, Democratic Republic of the Congo during 2011–2015. *J. Infect. Dis.* **223**, 1870–1878 (2021).
9. Charniga, K. et al. Updating reproduction number estimates for mpox in the Democratic Republic of the Congo using surveillance data. *Am. J. Trop. Med. Hyg.* **110**, 561–568 (2024).
10. Rapport de la situation épidémiologique de la variole simienne—sitrep no 1, 5–11 février. *Relief Web* <https://reliefweb.int/report/democratic-republic-congo/dr-congo-rapport-de-la-situation-epidemiologique-de-la-variole-simienne-sitrep-no-1-5-11-fevrier-2024> (2024).
11. Kibungu, E. M. et al. Clade I-associated mpox cases associated with sexual contact, the Democratic Republic of the Congo. *Emerg. Infect. Dis.* **30**, 172–176 (2024).
12. Masirika, L. M. et al. Ongoing mpox outbreak in Kamituga, South Kivu Province, associated with monkeypox virus of a novel clade I sub-lineage, Democratic Republic of the Congo, 2024. *Eur. Surveill.* **29**, 2400106 (2024).
13. Masirika, L. M. et al. Complete genome sequencing, annotation, and mutational profiling of the novel clade I human mpox virus, Kamituga strain. *J. Infect. Dev. Ctries* **18**, 600–608 (2024).
14. Fenner, F., Henderson, D. A., Arita, I., Jezek, Z. & Ladnyi, I. D. in *Smallpox and Its Eradication* Ch. 18 (World Health Organization, 1988).
15. McCollum, A. M. et al. Human monkeypox in the Kivus, a conflict region of the Democratic Republic of the Congo. *Am. J. Trop. Med. Hyg.* **93**, 718–721 (2015).
16. Ulaeto, D. et al. New nomenclature for mpox (monkeypox) and monkeypox virus clades. *Lancet Infect. Dis.* **23**, 273–275 (2023).
17. Li, Y., Zhao, H., Wilkins, K., Hughes, C. & Damon, I. K. Real-time PCR assays for the specific detection of monkeypox virus West African and Congo Basin strain DNA. *J. Virol. Methods* **169**, 223–227 (2010).
18. 2022–24 mpox (monkeypox) outbreak: global trends. *World Health Organization* (2024); [https://worldhealthorg.shinyapps.io/mpx\\_global/#2\\_Global\\_situation\\_update](https://worldhealthorg.shinyapps.io/mpx_global/#2_Global_situation_update)
19. Sam-Agudu, N. A., Martyn-Dickens, C. & Ewa, A. U. A global update of mpox (monkeypox) in children. *Curr. Opin. Pediatr.* **35**, 193–200 (2023).
20. Nachega, J. B. et al. Mpox Research Consortium. The surge of mpox in Africa: a call for action. *Lancet Glob. Health* **2**, e1086–e1088 (2024).

**Publisher’s note** jurisdictional claims in published maps and institutional affiliations.

**Open Access** This article is licensed under a Creative Commons Attribution 4.0 International License, which permits use, sharing, adaptation, distribution and reproduction in any medium or format, as long as you give appropriate credit to the original author(s) and the source, provide a link to the Creative Commons licence, and indicate if changes were made. The images or other third party material in this article are included in the article’s Creative Commons licence, unless indicated otherwise in a credit line to the material. If material is not included in the article’s Creative Commons licence and your intended use is not permitted by statutory regulation or exceeds the permitted use, you will need to obtain permission directly from the copyright holder. To view a copy of this licence, visit <http://creativecommons.org/licenses/by/4.0/>.

© The Author(s) 2024

Emmanuel Hasivirwe Vakaniaki<sup>1,2,28</sup>, Cris Kacita<sup>3,28</sup>, Eddy Kinganda-Lusamaki<sup>1,4,5</sup>, Áine O’Toole<sup>6</sup>, Tony Wawina-Bokalanga<sup>1,2,4</sup>, Daniel Mukadi-Bamuleka<sup>1,4,7</sup>, Adrienne Amuri-Aziza<sup>1</sup>, Nadine Malyamungu-Bubala<sup>8</sup>, Franklin Mweshi-Kumbana<sup>8</sup>, Léandre Mutimbwa-Mambo<sup>9</sup>, Freddy Belesi-Siangoli<sup>10</sup>, Yves Mujula<sup>1</sup>, Edyth Parker<sup>11</sup>, Pauline-Chloé Muswamba-Kayembe<sup>1</sup>, Sabin S. Nundu<sup>1</sup>, Robert S. Lushima<sup>3</sup>, Jean-Claude Makangara-Cigolo<sup>1,4</sup>, Noella Mulopo-Mukanya<sup>7</sup>, Elisabeth Pukuta-Simbu<sup>1</sup>, Prince Akil-Bandal<sup>1</sup>, Hugo Kavunga<sup>1,7</sup>, Ombotimbe Abdramane<sup>12</sup>, Isabel Brosius<sup>13</sup>, Eugene Bangwen<sup>14</sup>, Koen Vercauteren<sup>15</sup>, Nadia A. Sam-Agudu<sup>13,14,15</sup>, Edward J. Mills<sup>16</sup>,

Olivier Tshiani-Mbaya<sup>17</sup>, Nicole A. Hoff<sup>18</sup>, Anne W. Rimoin<sup>18</sup>, Lisa E. Hensley<sup>19</sup>, Jason Kindrachuk<sup>20</sup>, Cheryl Baxter<sup>21</sup>, Tulio de Oliveira<sup>21</sup>, Ahidjo Ayouba<sup>5</sup>, Martine Peeters<sup>5</sup>, Eric Delaporte<sup>5</sup>, Steve Ahuka-Mundeye<sup>1,4</sup>, Emma L. Mohr<sup>22</sup>, Nancy J. Sullivan<sup>23</sup>, Jean-Jacques Muyembe-Tamfum<sup>1,4</sup>, Jean B. Nachega<sup>24,25,26</sup>✉, Andrew Rambaut<sup>6</sup>, Laurens Liesenborghs<sup>2,27,29</sup> & Placide Mbala-Kingebeni<sup>1,4,29</sup>✉

<sup>1</sup>Institut National de Recherche Biomédicale, Kinshasa, Democratic Republic of the Congo. <sup>2</sup>Department of Clinical Sciences, Institute of Tropical Medicine, Antwerp, Belgium. <sup>3</sup>Hemorrhagic Fever and Monkeypox Program, Ministry of Health, Kinshasa, Democratic Republic of the Congo. <sup>4</sup>Service de Microbiologie, Département de Biologie Médicale, Cliniques Universitaires de Kinshasa, Université de Kinshasa, Kinshasa, Democratic Republic of the Congo. <sup>5</sup>TransVIHMI (Recherches Translationnelles sur le VIH et les Maladies Infectieuses endémiques et émergentes), Université de Montpellier, French National Research Institute for Sustainable Development (IRD), INSERM, Montpellier, France. <sup>6</sup>Institute of Ecology and Evolution, University of Edinburgh, Edinburgh, UK. <sup>7</sup>Rodolphe Merieux INRB-Goma Laboratory, Goma, Democratic Republic of the Congo. <sup>8</sup>Kamituga General Hospital, South Kivu, Democratic Republic of the Congo. <sup>9</sup>Kamituga Health Zone, South Kivu, Democratic Republic of the Congo. <sup>10</sup>Provincial Health Division, South Kivu, Democratic Republic of the Congo. <sup>11</sup>African Center of Excellence for Genomics of Infectious Diseases, Redeemer's University, Ede, Nigeria. <sup>12</sup>Medical Department, The Alliance for International Medical Action, Goma, Democratic Republic of the Congo. <sup>13</sup>Department of Pediatrics and Child Health, School of Medical Sciences, University of Cape Coast, Cape Coast, Ghana. <sup>14</sup>International Research Center of Excellence, Institute of Human Virology Nigeria, Abuja, Nigeria. <sup>15</sup>Global Pediatrics Program and Division of Infectious Diseases, Department of Pediatrics, University of Minnesota Medical School, Minneapolis, MN, USA. <sup>16</sup>Department of Health Research Methods, Evidence and Impact, Faculty of Health Sciences, McMaster University, Hamilton, Ontario, Canada. <sup>17</sup>Frederick National Laboratory, Leidos Biomedical Research, Clinical Monitoring Research Program Directorate, Frederick, MD, USA. <sup>18</sup>Department of Epidemiology, Jonathan and Karin Fielding School of Public Health, University of California, Los Angeles, CA, USA. <sup>19</sup>US Department of Agriculture, Manhattan, KS, USA. <sup>20</sup>University of Manitoba, Winnipeg, Manitoba, Canada. <sup>21</sup>Centre for Epidemic Response and Innovation, Stellenbosch University, Cape Town, South Africa. <sup>22</sup>Department of Pediatrics, Division of Infectious Diseases, University of Wisconsin-Madison, Madison, WI, USA. <sup>23</sup>National Emerging Infectious Diseases Laboratory, Boston University, Boston, MA, USA. <sup>24</sup>Department of Epidemiology, Infectious Diseases and Microbiology, University of Pittsburgh, School of Public Health, Pittsburgh, PA, USA. <sup>25</sup>Department of Epidemiology and International Health, Johns Hopkins Bloomberg School of Public Health, Baltimore, MD, USA. <sup>26</sup>Department of Medicine, Division of Infectious Diseases, Stellenbosch University Faculty of Medicine and Health Sciences, Cape Town, South Africa. <sup>27</sup>Department of Microbiology, Immunology and Transplantation, KU Leuven, Leuven, Belgium. <sup>28</sup>These authors contributed equally: Emmanuel Hasivirwe Vakaniaki, Cris Kacita. <sup>29</sup>These authors jointly supervised this work: Laurens Liesenborghs, Placide Mbala-Kingebeni. ✉e-mail: [jbn16@pitt.edu](mailto:jbn16@pitt.edu); [mbalaplacide@gmail.com](mailto:mbalaplacide@gmail.com)

## Methods

### Research ethics committee approval

This study used anonymized data and samples from mpox surveillance activities, outbreak response surveys and retrospective medical chart reviews. The secondary use of surveillance data and samples was approved by the Ethics Research Committee of the University of Kinshasa School of Public Health (approval ID ESP/CE/78/2024). As part of surveillance activities, individuals were investigated, and diagnostic samples were collected by health officials from the national mpox program or provincial health authorities. Patients consented orally to the collection of information and samples. Since the analyses conducted in this study were done retrospectively and the information and diagnostic samples were collected for surveillance and clinical care purposes, no written informed consent for research was provided by the patients.

### Population and setting

This study included patients hospitalized at the General Hospital of Kamituga, a gold mining town with approximately 242,000 inhabitants.

### Sampling and data collection

In January 2024, a multidisciplinary team comprising representatives from the Ministry of Public Health, provincial health authorities, the National Institute for Biomedical Research (INRB) and the Institute of Tropical Medicine investigated the mpox outbreak in Kamituga. We collated mpox monitoring data collected by provincial surveillance authorities. Local surveillance teams investigated and collected data from each suspected mpox case using a standardized Ministry of Public Health and Prevention form, which contains questions on demographics (age, sex, residence, profession and nationality), clinical symptoms, outcome and type of sample and collection date. For additional clinical data, we reviewed medical records of patients with suspected mpox admitted to the hospital between 6 October 2023 and 23 January 2024.

We then conducted interviews with local HCWs and local provincial and municipal health authorities. The INRB team interviewed and examined patients with suspected mpox, collecting samples from blood, skin lesions and oropharyngeal swabs for molecular diagnosis. Real-time PCR assays were performed at INRB Goma using the Light Mix Modular Monkeypox virus kit (Roche) according to the manufacturer's instructions.

The following criteria were used for defining suspected mpox cases: an individual with a vesicular or pustular rash with deep-seated, firm pustules and  $\geq 1$  of the following symptoms: fever preceding the eruption, lymphadenopathy (inguinal, axillary or cervical) or pustules or crusts on hand palms or foot soles. A confirmed mpox case was identified when laboratory testing confirmed the presence of MPXV in the patient's specimen, by real-time PCR and/or sequencing, following the diagnosis of a suspected case<sup>21</sup>. However, not all suspected cases of mpox were confirmed through PCR testing owing to resource constraint in this setting.

### MPXV genome sequencing

Sequencing was performed at the INRB's Pathogen Genomics lab in Kinshasa. Samples testing positive with cycle threshold values  $< 31$  underwent sequencing using the Illumina DNA Prep with Enrichment kit (Illumina) and Comprehensive Viral Research Panel (Twist Biosciences). Following the manufacturer's protocol, libraries were prepared and loaded onto the NextSeq 2000 sequencer. FASTQ files were processed through GeVarLi (<https://forge.ird.fr/transvihmi/nfernandez/GeVarLi>), CZid (<https://czid.org/>) and iVar pipelines for read quality control, consensus genome coverage and variant calling using a clade I reference genome (an early MPXV genome from DRC, accession [NC\\_003310](https://ncbi.nlm.nih.gov/nuccore/NC_003310)).

### Phylogenetic analysis

We compiled a dataset including all high-quality clade I MPXV genome sequences from GenBank (accessions and author list in Supplementary

Table 2) and used clade IIa MPXV genomes from Nigeria dated 1978 and 1971 as outgroups (accession numbers KJ642615 and KJ642617, respectively). We estimated a maximum likelihood phylogeny using IQ-TREE 2 version 2.2.5 (ref. 22) with the HKY substitution model (Supplementary Fig. 1)<sup>23</sup>. Ancestral reconstruction was performed for each internal node on phylogeny using IQ-TREE 2, enabling mapping of single nucleotide polymorphisms (SNPs) along branches. SNPs were categorized on the basis of whether they were consistent with the signature of APOBEC3 editing, assuming this process induced specific mutations (TC  $\rightarrow$  TT and GA  $\rightarrow$  AA). To estimate the date of the most recent common ancestor of the Kamituga MPXV genomes and, thus, a bound on when the outbreak started, we followed the method described by O'Toole et al.<sup>7</sup> implemented in BEAST v1.10.4<sup>24</sup> with BEAGLE v4.0<sup>25</sup>. This approach divides the alignment into a partition containing all the sites that could potentially be edited by APOBEC3 and a partition containing the remaining sites. This allows a faster rate of evolution for the accumulation of APOBEC3-induced mutations than the background rate resulting from replication errors. As there is insufficient temporal information in these data to independently estimate the rate of evolution, we constrained the rates of these two partitions using posterior estimates from O'Toole et al.<sup>7</sup> (approximated by a normal with mean  $1.3 \times 10^{-4}$  substitutions per site per year and standard deviation  $1.0 \times 10^{-4}$ ; and mean  $4.2 \times 10^{-6}$  and standard deviation  $0.49 \times 10^{-6}$ , respectively). We used an exponential growth coalescent model as a prior on the tree. Finally, we estimated a maximum likelihood phylogeny of a sample of all clades I, IIa and IIb to look for relative divergence within and between clades for comparison with the divergence of putative clades Ia and Ib (Supplementary Fig. 2).

### Reporting summary

Further information on research design is available in the Nature Portfolio Reporting Summary linked to this article.

### Data availability

All epidemiological data produced in this study are deidentified and available upon request to the authors. Sequencing data are publicly accessible via GitHub at [https://github.com/inrb-labgenpath/Mpox\\_sequencing\\_Kamituga](https://github.com/inrb-labgenpath/Mpox_sequencing_Kamituga), and the 47 complete or near-full-length MPXV genomes from this study have been deposited in the NCBI GenBank repository under accession numbers PP601182–PP601228 (Supplementary Tables 3 and 4).

### References

1. Mande, G. et al. Enhanced surveillance of monkeypox in Bas-Uélé, Democratic Republic of Congo: the limitations of symptom-based case definitions. *Int. J. Infect. Dis.* **122**, 647–655 (2022).
2. Minh, B. Q. et al. IQ-TREE 2: new models and efficient methods for phylogenetic inference in the genomic era. *Mol. Biol. Evol.* **37**, 1530–1534 (2020).
3. Hasegawa, M., Kishino, H. & Yano, T. Dating of the human–ape splitting by a molecular clock of mitochondrial DNA. *J. Mol. Evol.* **22**, 160–174 (1985).
4. Suchard, M. A. et al. Bayesian phylogenetic and phylodynamic data integration using BEAST 1.10. *Virus Evol.* **4**, vey016 (2018).
5. Ayres, D. L. et al. BEAGLE 3: improved performance, scaling and usability for a high-performance computing library for statistical phylogenetics. *Syst. Biol.* **68**, 1052–1061 (2019).

### Acknowledgements

We thank J. L. Johnson, Case Western Reserve University, Cleveland, OH, USA; P. J. Rosenthal and M. Gandhi, University of California San Francisco, CA, USA; M. P. Hermans, Université Catholique Louvain, Brussels, Belgium; W. Preiser, Stellenbosch University, Cape Town, South Africa; L. Harrison, University of Pittsburgh, PA, USA; and R. Lewis, World Health Organization, Geneva, Switzerland, for critical review of the manuscript. We thank the patients whose samples were

analyzed. Also, we are grateful to all Kamituga staff involved in the management of this outbreak, the health division province in South Kivu and the DRC's Ministry of Public Health. Thanks also to the clinical and provincial staff in Kamituga (J. Bengheya Mbiribindi, G. Lubambo and W. Kasi), L. Murhula Masirika for providing sampling kits and the logistics team in Goma for helping with the transfer of samples to Kinshasa. We also acknowledge the support of E. Muyamuna, S. Gabia, A. Citenga, F. Muyembe, O. Rilia, G. Luakanda, E. Lokilo, P. Paku, S. Kavira, M. Kenye, R. Lumembe and G. Kabamba. We also thank all members of the MpoxReC as well as members of the Africa Pathogen Genomics Initiative (CARES), AFROSCREEN, DTRA, USDA and IMReC for supporting the outbreak response and the genomic surveillance in DRC. This work was funded by the Belgian Directorate-general Development Cooperation and Humanitarian Aid and the Research Foundation – Flanders (FWO, grant number G096222N to L.L.); the International Mpox Research Consortium (IMReC) through funding from the Canadian Institutes of Health Research and International Development Research Centre (grant no. MRR-184813); Department of Defense, Defense Threat Reduction Agency, Monkeypox Threat Reduction Network; and USDA Non-Assistance Cooperative Agreement #20230048; the National Institutes of Health (NIH)/Fogarty International Center (FIC) grant number 5R25TW011217-05; Africa Pathogen Genomics Initiative helped acquiring and maintaining the sequencer; Agence Française de Développement through the AFROSCREEN project (grant agreement CZZ3209, coordinated by ANRS-MIE Maladies infectieuses émergentes in partnership with Institut de Recherche pour le Développement (IRD) and Pasteur Institute) for laboratory support and PANAFPOX project funded by ANRS-MIE. J.B.N. is supported by the US National Institutes of Health (NIH; grant numbers NIH/FIC 5R25TW011217-05, NIH/FIC 1D43TW010937-01A1, NIH/FIC D43TW011827-01A1, NIH/FIC 1R21TW011706-0 and NIH/NIAID 5U01AI096299-13). E.L.M. acknowledges the support of the NIH (R01AI182082-01). E.L. received a PhD grant from the French Foreign Office. A.O.T. and A.R. acknowledge the support of the Wellcome Trust (Collaborators Award 206298/Z/17/Z, ARTIC network).

### Author contributions

E.H.V., C.K., E.K.-L., A.O., L.L., J.B.N., A.R., P.M.-K. and N.A.H. drafted one or more sections of the manuscript. E.H.V., C.K., N.M.-B., F.M.-K.,

L.M.-M., F.B.-S., Y.M., S.S.N., O.A., I.B., E.B. and L.L. conducted field epidemiological investigations and data collection. D.M.-B., A.A.-A., P.-C.M.-K., N.M., E.P.-S., P.A.-B. and H.K. supported analysis. A.O., T.W.B., D.M.-B., J.-C.M.-C., E.K.-L., D.M.-B., A.A.-A., P.-C.M.-K., J.-C.M.-C., N.M.M., E.P.-S., P.A.-B., A.R., P.M.-K. and K.V. supported genomic analysis and contributed to the review and editing of the manuscript. E.H.V., C.K., E.K.-L., A.O., A.R., P.M.-K., L.L., Y.M., I.B. and E.B. supported data analysis. A.W.R., L.E.H., J.K., M.P., E.D., R.S.L., S.A.-M., H.K., J.B.N., J.-J.M.-T., L.L. and P.M.-K. supervised the field work. All authors contributed to the writing, revisions and approval of the final version of the manuscript.

### Competing interests

None of the authors declare competing interests.

### Inclusion and ethics statement

All collaborators in this study meet the authorship criteria specified by Nature Portfolio journals and have been listed as authors, given their vital contributions to the study's design and execution. Roles and responsibilities were defined collectively before the research. Our findings hold global significance and were identified in conjunction with local and international research collaborators. This research was conducted without severe restrictions or prohibitions and posed no risks of stigma, incrimination, discrimination or personal harm to participants. We have considered relevant local and regional research in our citations.

### Additional information

**Supplementary information** The online version contains supplementary material available at <https://doi.org/10.1038/s41591-024-03130-3>.

**Correspondence and requests for materials** should be addressed to Jean B. Nachega or Placide Mbala-Kingebeni.

**Peer review information** *Nature Medicine* thanks Carla Mavian, Karthik Gangavarapu and the other, anonymous, reviewer(s) for their contribution to the peer review of this work. Primary Handling Editor: Alison Farrell, in collaboration with the *Nature Medicine* team.

**Reprints and permissions information** is available at [www.nature.com/reprints](http://www.nature.com/reprints).



## Reporting Summary

Nature Portfolio wishes to improve the reproducibility of the work that we publish. This form provides structure for consistency and transparency in reporting. For further information on Nature Portfolio policies, see our [Editorial Policies](#) and the [Editorial Policy Checklist](#).

### Statistics

For all statistical analyses, confirm that the following items are present in the figure legend, table legend, main text, or Methods section.

n/a Confirmed

- The exact sample size ( $n$ ) for each experimental group/condition, given as a discrete number and unit of measurement
- A statement on whether measurements were taken from distinct samples or whether the same sample was measured repeatedly
- The statistical test(s) used AND whether they are one- or two-sided  
*Only common tests should be described solely by name; describe more complex techniques in the Methods section.*
- A description of all covariates tested
- A description of any assumptions or corrections, such as tests of normality and adjustment for multiple comparisons
- A full description of the statistical parameters including central tendency (e.g. means) or other basic estimates (e.g. regression coefficient) AND variation (e.g. standard deviation) or associated estimates of uncertainty (e.g. confidence intervals)
- For null hypothesis testing, the test statistic (e.g.  $F$ ,  $t$ ,  $r$ ) with confidence intervals, effect sizes, degrees of freedom and  $P$  value noted  
*Give  $P$  values as exact values whenever suitable.*
- For Bayesian analysis, information on the choice of priors and Markov chain Monte Carlo settings
- For hierarchical and complex designs, identification of the appropriate level for tests and full reporting of outcomes
- Estimates of effect sizes (e.g. Cohen's  $d$ , Pearson's  $r$ ), indicating how they were calculated

*Our web collection on [statistics for biologists](#) contains articles on many of the points above.*

### Software and code

Policy information about [availability of computer code](#)

Data collection

#### SAMPLING AND DATA COLLECTION

In January 2024, a multidisciplinary team comprising representatives from the Ministry of Public Health, provincial health authorities, the National Institute for Biomedical Research (INRB) and the Institute of Tropical Medicine (ITM) investigated the mpox outbreak in Kamituga. We collated mpox monitoring data collected by provincial surveillance authorities. Local surveillance teams investigated and collected data from each suspected mpox case using a standardized Ministry of Public Health and Prevention form, which contains questions on demographics (age, sex, residence, profession, nationality), clinical symptoms, outcome, and type of sample and collection date. For additional clinical data, we reviewed medical records of patients with suspected mpox admitted to the hospital between October 6, 2023, and January 23, 2024.

We then conducted interviews with local HCWs and local provincial and municipal health authorities. The INRB team interviewed and examined patients with suspected mpox, collecting samples from blood, skin lesions, and oropharyngeal swabs for molecular diagnosis. Real-time PCR assays were performed at INRB Goma using the Light Mix Modular Monkeypox virus kit (Roche, Germany) according to manufacturer's instructions.

The DRC national case definition was used for defining suspected mpox cases: an individual with a vesicular or pustular rash with deep-seated, firm pustules, and  $\geq 1$  of the following symptoms: fever preceding the eruption, lymphadenopathy (inguinal, axillary, or cervical), or pustules or crusts on hand palms or foot soles. A confirmed mpox case was identified when laboratory testing confirmed the presence of MPXV in the patient's specimen, by real-time PCR and/or sequencing, following the diagnosis of a suspected case.<sup>21</sup> However, not all suspected cases of mpox were confirmed through PCR testing due to resource constraint in this setting.

#### MPXV GENOME SEQUENCING

Sequencing was performed at the INRB's Pathogen Genomics lab in Kinshasa. Samples testing positive with Cycle threshold (Ct) values <31 underwent sequencing using Illumina DNA Prep with Enrichment kit (Illumina) and Comprehensive Viral Research Panel (Twist Biosciences). Following the manufacturer's protocol, libraries were prepared and loaded onto the NextSeq 2000 sequencer. FASTQ files were processed through GeVarLi (<https://forge.ird.fr/transvihmi/nfernandez/GeVarLi>), CZid (<https://czid.org/>) and iVar pipelines for read quality control, consensus genome coverage, and variant calling using a Clade I reference genome (an early MPXV genome from DRC, accession: NC\_003310).

## Data analysis

### PHYLOGENETIC ANALYSIS

We compiled a dataset including all high-quality Clade I MPXV genome sequences from GenBank (accessions and author list in Extended Data Table 1) and used Clade IIa MPXV genomes from Nigeria dated 1978 and 1971 as outgroups (accession numbers KJ642615 and KJ642617, respectively). We estimated a maximum likelihood phylogeny using IQ-TREE 2 version 2.2.522 with the HKY substitution model.<sup>23</sup> Ancestral reconstruction was performed for each internal node on phylogeny using IQ-TREE 2, enabling mapping of single nucleotide polymorphisms (SNPs) along branches. SNPs were categorized based on whether they were consistent with the signature of APOBEC3-editing, assuming this process induced specific mutations (TC→TT and GA→AA). To estimate the date of the most recent common ancestor of the Kamituga MPXV genomes, and thus a bound on when the outbreak started, we followed the method described by O'Toole et al.<sup>7</sup> implemented in BEAST v1.10.424 with BEAGLE v4.025. This approach divides the alignment into a partition containing all the sites that could potentially be edited by APOBEC3 and a partition containing the remaining sites. This allows faster rate of evolution for the accumulation of APOBEC3 induced mutations than the background rate resulting from replication errors. As there is insufficient temporal information in these data to independently estimate the rate of evolution, we constrained the rates of these two partitions using posterior estimates from O'Toole et al.<sup>7</sup> (approximated by a normal with mean  $1.3 \times 10^{-4}$  substitutions/site/year and standard deviation  $1.0 \times 10^{-4}$ ; and mean  $4.2 \times 10^{-6}$  and standard deviation  $0.49 \times 10^{-6}$ , respectively). We used an exponential growth coalescent model as a prior on the tree. Finally, we estimated a maximum likelihood phylogeny of a sample of all Clade I, IIa and IIb to look for relative divergence within and between clades for comparison with the divergence of putative Clades Ia and Ib (Extended Data Figure 2).

For manuscripts utilizing custom algorithms or software that are central to the research but not yet described in published literature, software must be made available to editors and reviewers. We strongly encourage code deposition in a community repository (e.g. GitHub). See the Nature Portfolio [guidelines for submitting code & software](#) for further information.

## Data

Policy information about [availability of data](#)

All manuscripts must include a [data availability statement](#). This statement should provide the following information, where applicable:

- Accession codes, unique identifiers, or web links for publicly available datasets
- A description of any restrictions on data availability
- For clinical datasets or third party data, please ensure that the statement adheres to our [policy](#)

### DATA AVAILABILITY

All epidemiological data produced in this study are de-identified and available upon request to the authors. Sequencing data are publicly accessible at [https://github.com/inrb-labgenpath/Mpox\\_sequencing\\_Kamituga](https://github.com/inrb-labgenpath/Mpox_sequencing_Kamituga), and the 47 complete or near full-length MPXV genomes from this study have been deposited in the NCBI GenBank repository under accession numbers PP601182-PP601228 (see Supplemental Table 2).

## Human research participants

Policy information about [studies involving human research participants and Sex and Gender in Research](#).

### Reporting on sex and gender

The median age was 22 years (IQR 18-27) (Figure 1B). Children <15 years constituted 14.8% (16/108) of confirmed cases, individuals aged 15-30 years accounted for 67% (73/108), and 17.6% (19/108) of cases were individuals 30-49 years

### Population characteristics

Among individuals with PCR-confirmed mpox, the majority were female (56/108, 51.9%) and the median age was 22 years (IQR 18-27) (Figure 1B). Children <15 years constituted 14.8% (16/108) of confirmed cases, individuals aged 15-30 years accounted for 67% (73/108), and 17.6% (19/108) of cases were individuals 30-49 years

### Recruitment

Between September 29, 2023, and February 29, 2024, South Kivu's provincial surveillance authorities recorded 241 suspected cases that met the national case definition for mpox (Figure 1A). Most cases (93%) were in Kamituga Health Zone. Laboratory specimens from 119 (48.9%) of the patients hospitalized for mpox were collected for PCR testing. Of these, 108 (90.8%) were confirmed MPXV-positive. Demographic characteristics and clinical manifestations were similar between suspected and confirmed cases (Supplemental Table 1).

### Ethics oversight

RESEARCH ETHICS COMMITTEE APPROVAL This study used anonymized data and samples from mpox surveillance activities, outbreak response surveys, and retrospective medical chart reviews. The secondary use of surveillance data and samples was approved by the Ethics Research Committee of the University of Kinshasa School of Public Health (Approval ID: ESP/CE/78/2024). As part of surveillance activities, individuals were investigated, and diagnostic samples were collected by health officials from the national mpox program or provincial health authorities. Patients consented orally to the collection of information and samples. Since the analyses conducted in this study were done retrospectively and the information and diagnostic samples were collected for surveillance and clinical care purposes, no written informed consent for research was provided by the patients.

Note that full information on the approval of the study protocol must also be provided in the manuscript.

## Field-specific reporting

Please select the one below that is the best fit for your research. If you are not sure, read the appropriate sections before making your selection.

Life sciences       Behavioural & social sciences       Ecological, evolutionary & environmental sciences

For a reference copy of the document with all sections, see [nature.com/documents/nr-reporting-summary-flat.pdf](https://www.nature.com/documents/nr-reporting-summary-flat.pdf)

## Life sciences study design

All studies must disclose on these points even when the disclosure is negative.

Sample size	We performed a convenience sampling. This method involves taking available participants who meet the criteria rather than using a pre-determined sample size or a random sampling method. Convenience sampling is often used when researchers rely on readily available subjects and useful in preliminary research or situations with limited resources. The post hoc power analysis indicates a power of approximately 0.955, or 95.5%. This means that the study, with 108 confirmed MPXV-positive cases and assuming a medium effect size has a high probability (95.5%) of detecting a statistically significant effect if one exists.
Data exclusions	No data were excluded
Replication	Between September 29, 2023, and February 29, 2024, South Kivu's provincial surveillance authorities recorded 241 suspected cases of mpox. Of these, laboratory specimens were collected from 119 hospitalized patients for PCR testing. The PCR testing confirmed 108 cases as MPXV-positive. The study aimed to ensure reproducibility by standardizing the PCR testing protocol and consistently applying the national case definition for mpox across all recorded cases. Demographic characteristics and clinical manifestations were systematically recorded and analyzed to confirm consistency between suspected and confirmed cases. Each patient's sample was tested once, and no technical replicates were performed for the PCR testing.
Randomization	Not applicable as our study was not a clinical trial
Blinding	Not applicable as our study was not a clinical trial

## Reporting for specific materials, systems and methods

We require information from authors about some types of materials, experimental systems and methods used in many studies. Here, indicate whether each material, system or method listed is relevant to your study. If you are not sure if a list item applies to your research, read the appropriate section before selecting a response.

### Materials & experimental systems

n/a	Included in the study
<input checked="" type="checkbox"/>	<input type="checkbox"/> Antibodies
<input checked="" type="checkbox"/>	<input type="checkbox"/> Eukaryotic cell lines
<input checked="" type="checkbox"/>	<input type="checkbox"/> Palaeontology and archaeology
<input checked="" type="checkbox"/>	<input type="checkbox"/> Animals and other organisms
<input type="checkbox"/>	<input checked="" type="checkbox"/> Clinical data
<input checked="" type="checkbox"/>	<input type="checkbox"/> Dual use research of concern

### Methods

n/a	Included in the study
<input checked="" type="checkbox"/>	<input type="checkbox"/> ChIP-seq
<input checked="" type="checkbox"/>	<input type="checkbox"/> Flow cytometry
<input checked="" type="checkbox"/>	<input type="checkbox"/> MRI-based neuroimaging

## Clinical data

Policy information about [clinical studies](#)

All manuscripts should comply with the ICMJE [guidelines for publication of clinical research](#) and a completed [CONSORT checklist](#) must be included with all submissions.

Clinical trial registration	Not applicable as our study was not a clinical trial
Study protocol	Study protocol can be obtained by sending an e-mail request to either of the corresponding authors: Professor Placide Mbala ( <a href="mailto:mbalaplacide@gmail.com">mbalaplacide@gmail.com</a> ) or Professor Jean Nachege ( <a href="mailto:jbn16@pitt.edu">jbn16@pitt.edu</a> )
Data collection	<p><b>SAMPLING AND DATA COLLECTION</b></p> <p>In January 2024, a multidisciplinary team comprising representatives from the Ministry of Public Health, provincial health authorities, the National Institute for Biomedical Research (INRB) and the Institute of Tropical Medicine (ITM) investigated the mpox outbreak in Kamituga. We collated mpox monitoring data collected by provincial surveillance authorities. Local surveillance teams investigated and collected data from each suspected mpox case using a standardized Ministry of Public Health and Prevention form, which contains questions on demographics (age, sex, residence, profession, nationality), clinical symptoms, outcome, and type of sample and collection date. For additional clinical data, we reviewed medical records of patients with suspected mpox admitted to the hospital between October 6, 2023, and January 23, 2024.</p>

We then conducted interviews with local HCWs and local provincial and municipal health authorities. The INRB team interviewed and examined patients with suspected mpox, collecting samples from blood, skin lesions, and oropharyngeal swabs for molecular diagnosis. Real-time PCR assays were performed at INRB Goma using the Light Mix Modular Monkeypox virus kit (Roche, Germany) according to manufacturer's instructions.

The DRC national case definition was used for defining suspected mpox cases: an individual with a vesicular or pustular rash with deep-seated, firm pustules, and  $\geq 1$  of the following symptoms: fever preceding the eruption, lymphadenopathy (inguinal, axillary, or cervical), or pustules or crusts on hand palms or foot soles. A confirmed mpox case was identified when laboratory testing confirmed the presence of MPXV in the patient's specimen, by real-time PCR and/or sequencing, following the diagnosis of a suspected case.<sup>21</sup> However, not all suspected cases of mpox were confirmed through PCR testing due to resource constraint in this setting.

## Outcomes

Primary outcome was participants with confirmed mpox via MPXV-PCR+. The DRC national case definition was used for defining suspected mpox cases: an individual with a vesicular or pustular rash with deep-seated, firm pustules, and  $\geq 1$  of the following symptoms: fever preceding the eruption, lymphadenopathy (inguinal, axillary, or cervical), or pustules or crusts on hand palms or foot soles. A confirmed mpox case was identified when laboratory testing confirmed the presence of MPXV in the patient's specimen, by real-time PCR and/or sequencing, following the diagnosis of a suspected case.<sup>21</sup> However, not all suspected cases of mpox were confirmed through PCR testing due to resource constraint in this setting.