

UCLA
Contemporary Music Score Collection

Title

hmm -- ah (ä)

Permalink

<https://escholarship.org/uc/item/4x7903g7>

Author

Aitken, T.

Publication Date

2020

hmm - - ah (ä)
for solo accordion

T. Aitken

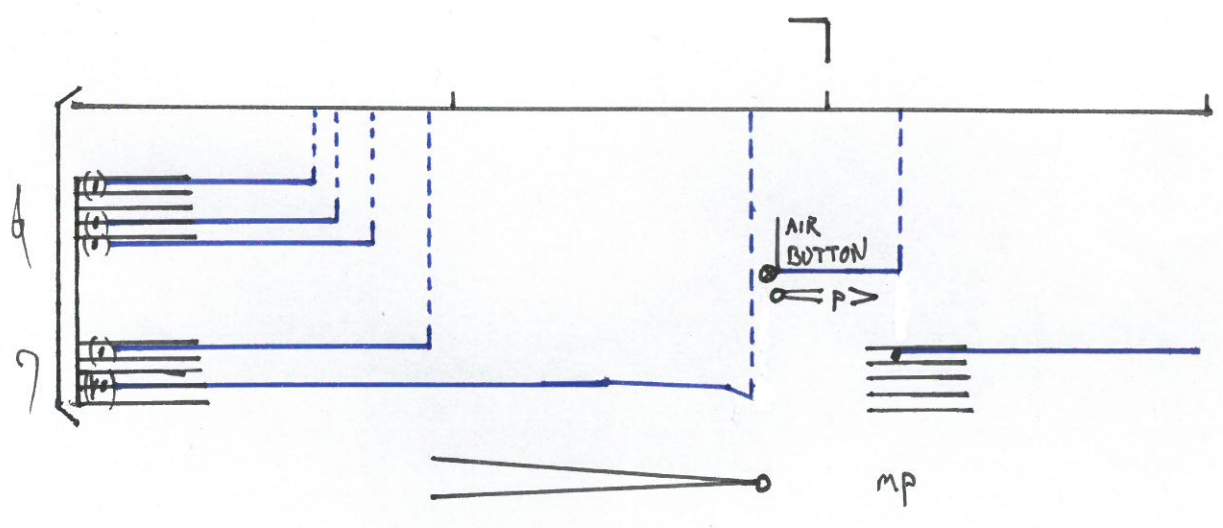
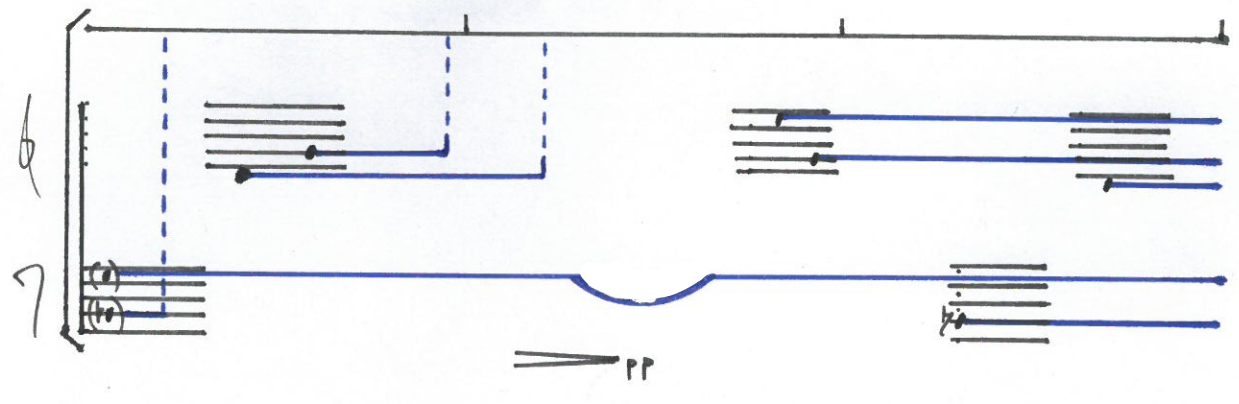
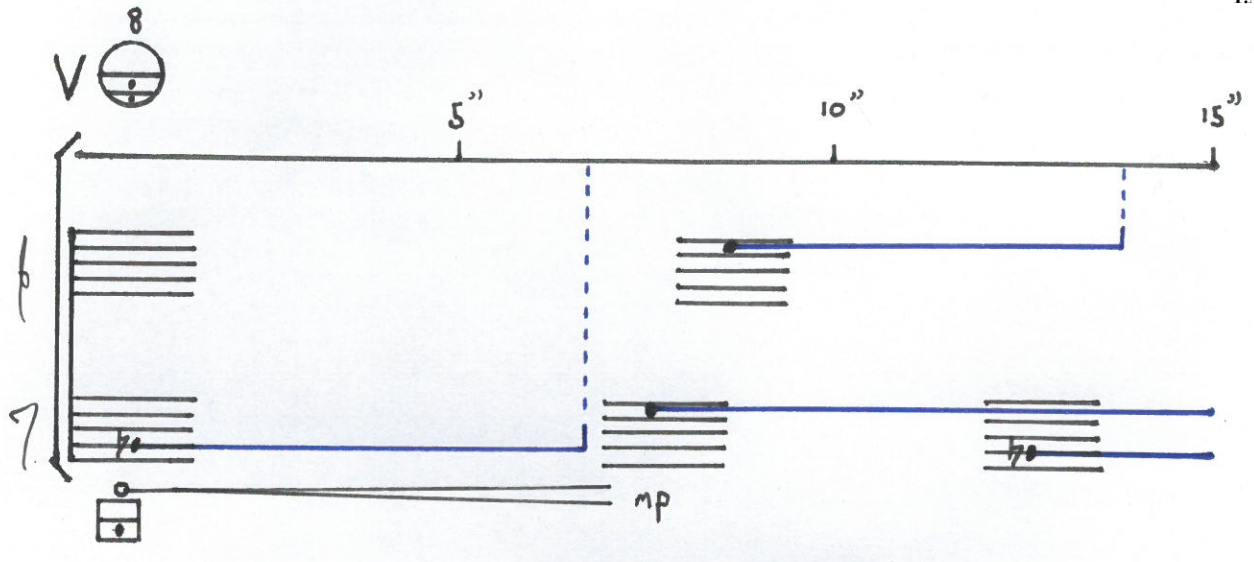
written for
Panagiotis Andreoglou

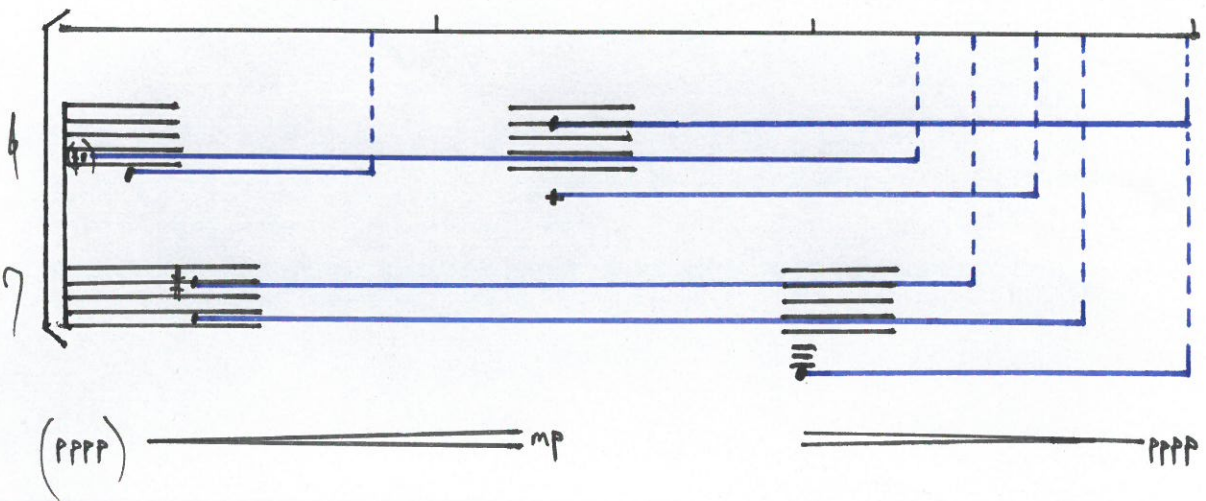
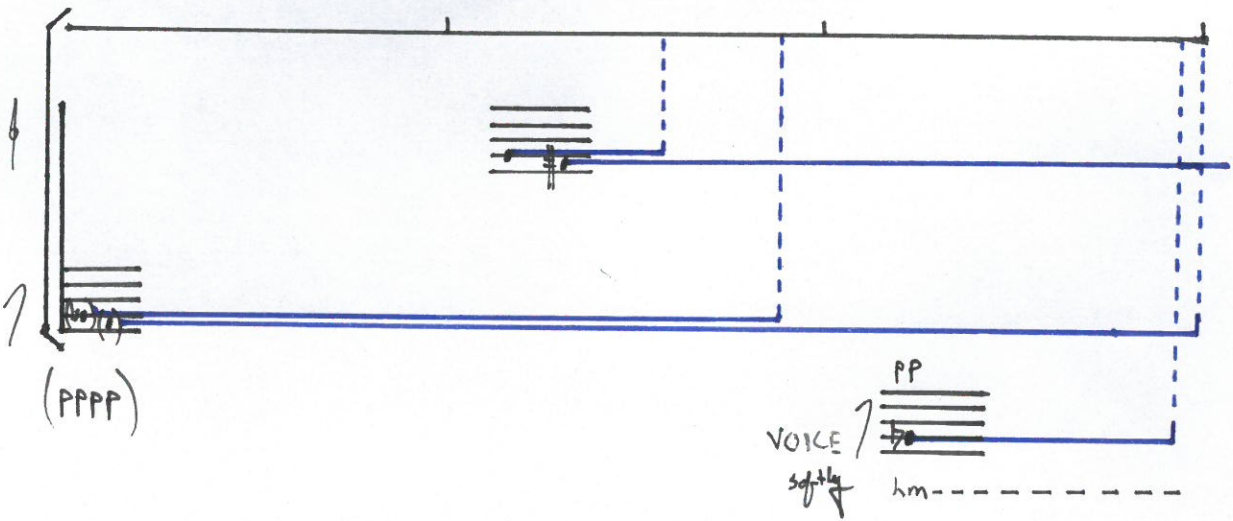
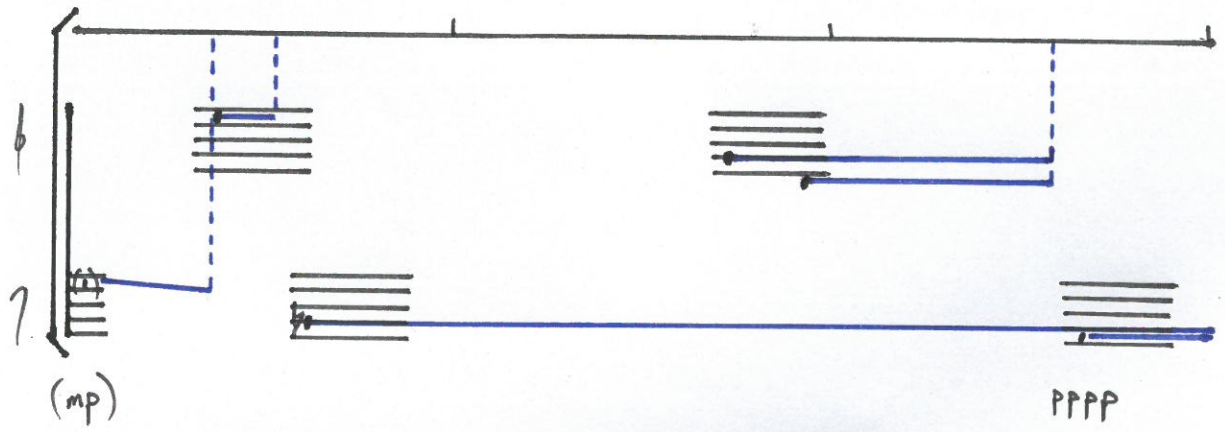
outHEAR New Music Week 2019

①

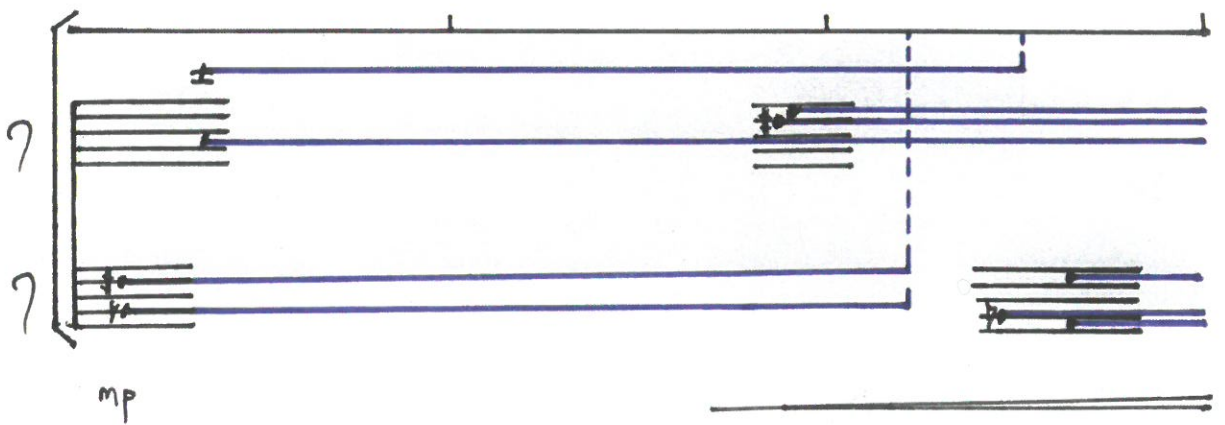
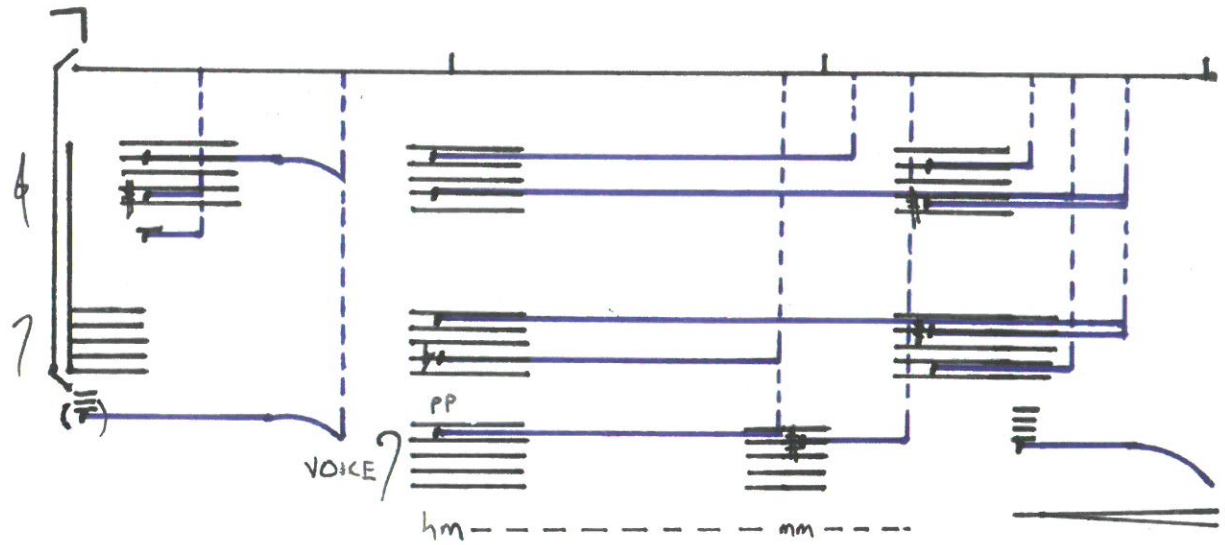
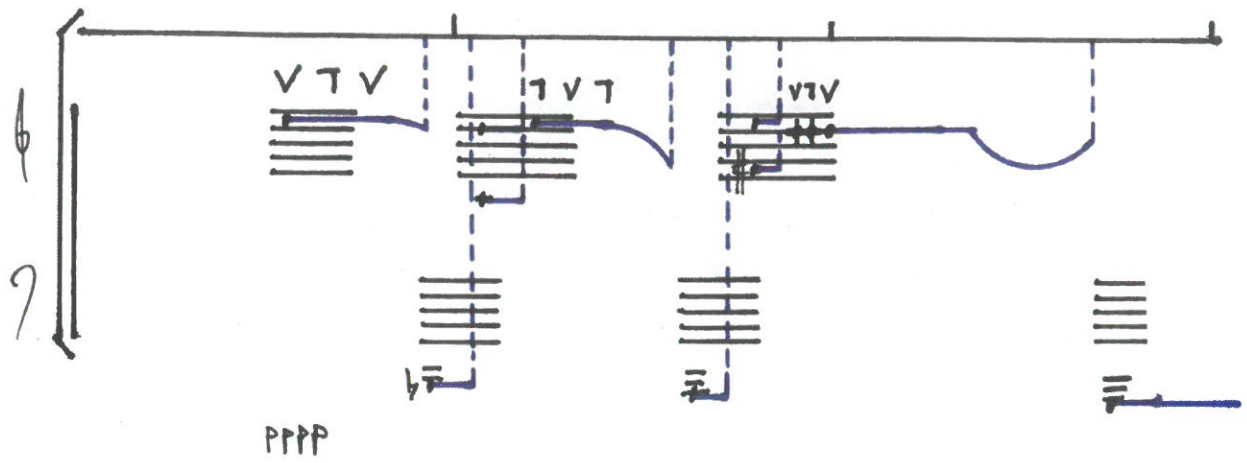
hmm - - ah (ä)
for Panagiotis Andreoglou

T.Aitken





3



N.B. ϕ = As short as possible

VOICE

hm ————— ah

ff

mp

pp

7 V 7 V 7 SIM.

pesante

7 V 7 V 7 SIM.

AIR BOTTON

pp

mp

Handwritten musical score for the first system. It consists of two staves. The upper staff is marked with a treble clef and a key signature of one flat (B-flat). It contains several measures of music, with a circled '8' above the final measure. The lower staff is marked with a bass clef and contains music starting with a dynamic marking of *pp*. A voice part is indicated by a bracket labeled "VOICE" with a dynamic marking of *mp*. Below the voice part, there is a dashed line labeled "hm" and a circled '8' symbol.

Handwritten musical score for the second system. It features two staves. The upper staff has a treble clef and a key signature of one flat. The lower staff has a bass clef. A voice part is indicated by a bracket labeled "VOICE" with a dynamic marking of *mp*. Below the voice part, there is a dashed line labeled "ah" and a dynamic marking of *pp* that transitions to *mp*. At the end of the system, there is a dynamic marking of *mf* and *mp*.

Handwritten musical score for the third system. It features two staves. The upper staff has a treble clef and a key signature of one flat. The lower staff has a bass clef. A voice part is indicated by a bracket labeled "VOICE" with a dynamic marking of *p* that transitions to *mf*. Below the voice part, there is a dashed line labeled "hm" and "mm".

6

Handwritten musical score for voice and instruments. The score is divided into two sections by a vertical dashed line. The first section shows a voice part with notes and a dynamic marking of *mf*. The second section shows a voice part with notes and a dynamic marking of *f*. There are also instrumental parts with notes and dynamic markings of *mf* and *f*. A circled '6' is written at the top left of the page.

6-8" FOR ENTIRE SYSTEM

ALL NOTES IN BLUE
Box = 8va

Handwritten musical score for a string section. The score is divided into two sections by a vertical dashed line. The first section shows a string part with notes and a dynamic marking of *ff*. The second section shows a string part with notes and a dynamic marking of *fff*. A circled '6' is written at the top left of the page.

(2") (4") (6") (11")

Handwritten musical score for a string section. The score is divided into four sections by vertical dashed lines, labeled (2"), (4"), (6"), and (11"). The first section shows a string part with notes and a dynamic marking of *ff*. The second section shows a string part with notes and a dynamic marking of *f*. The third section shows a string part with notes and a dynamic marking of *f*. The fourth section shows a string part with notes and a dynamic marking of *f*. A circled '6' is written at the top left of the page.

AS LOUD
AS POSSIBLE

7

Handwritten musical score for the first system. It consists of a vocal line and piano accompaniment. The vocal line starts with a circled '7' above it. The piano accompaniment is divided into three sections by vertical dashed lines. The first section has a dynamic marking of *pppp*. The second section has a dynamic marking of *ppp*. The third section has a dynamic marking of *pp*. Above the piano part, there are two circled diagrams: the first is a circle with a horizontal line and a dot above it; the second is a circle with a horizontal line and two dots above it. The piano part includes various chords and melodic lines, some with accidentals like sharps and naturals.

Handwritten musical score for the second system. It features a piano part and a voice part. The piano part has a dynamic marking of *p*. The voice part has a dynamic marking of *mp*. Below the voice part, there are vocalizations: *hm* followed by a dashed line, and *mm* followed by a dashed line. The piano part includes chords and melodic lines, some with accidentals like sharps and naturals.

Handwritten musical score for the third system. It features a voice part and a piano part. The voice part has a dynamic marking of *pp*. Below the voice part, there are vocalizations: *hm* followed by a dashed line, *mm* followed by a dashed line, and *ah* followed by a dashed line. The piano part includes chords and melodic lines, some with accidentals like sharps and naturals.

8

Handwritten musical notation for guitar, consisting of two staves. The top staff has a treble clef and contains three chord diagrams: a G major chord with a sharp sign above it, a G major chord with a sharp sign above it, and a G major chord with a sharp sign above it. The bottom staff has a bass clef and contains three chord diagrams: a G major chord with a sharp sign above it, a G major chord with a sharp sign above it, and a G major chord with a sharp sign above it. The instruction "ADD Bb" is written below the second chord diagram in the bottom staff.

Handwritten musical notation for guitar, consisting of two staves. The top staff has a treble clef and contains two chord diagrams: a G major chord with a sharp sign above it, and a G major chord with a sharp sign above it. The bottom staff has a bass clef and contains two chord diagrams: a G major chord with a sharp sign above it, and a G major chord with a sharp sign above it. A vertical dashed line is drawn between the two chord diagrams in the bottom staff. The instruction "TAKE OFF Bb" is written below the first chord diagram in the bottom staff.

VIENNA
OCTOBER
2019