

UC Irvine

UC Irvine Previously Published Works

Title

Distinguishing exercise intolerance in early-stage pulmonary hypertension with invasive exercise hemodynamics: Rest VE/VCO₂ and ETCO₂ identify pulmonary vascular disease

Permalink

<https://escholarship.org/uc/item/4xx0f420>

Journal

Clinical Cardiology, 45(7)

ISSN

0160-9289

Authors

Raza, Farhan
Dharmavaram, Naga
Hess, Timothy
[et al.](#)

Publication Date

2022-07-01

DOI


10.1002/clc.23831

Copyright Information

This work is made available under the terms of a Creative Commons Attribution License, available at <https://creativecommons.org/licenses/by/4.0/>

Peer reviewed

Distinguishing exercise intolerance in early-stage pulmonary hypertension with invasive exercise hemodynamics: Rest V_E/VCO_2 and $ETCO_2$ identify pulmonary vascular disease

Farhan Raza MD¹  | Naga Dharmavaram MD¹ | Timothy Hess PhD¹ |
 Ravi Dhingra MD¹ | James Runo MD² | Amy Chybowski ARNP² |
 Callyn Kozitza MS³ | Supria Batra MD⁴ | Evelyn M. Horn MD⁴ |
 Naomi Chesler PhD⁵ | Marlowe Eldridge MD^{3,6}

¹Department of Medicine-Division of Cardiology, University of Wisconsin-Madison, Madison, Wisconsin, USA

²Department of Medicine-Division of Pulmonary and Critical Care, University of Wisconsin-Madison, Madison, Wisconsin, USA

³Department of Biomedical Engineering, University of Wisconsin-Madison, Madison, Wisconsin, USA

⁴Department of Medicine-Division of Cardiology Weill Cornell Medicine, New York, New York, USA

⁵University of California-Irvine Edwards Lifesciences Foundation Cardiovascular Innovation and Research Center and Department of Biomedical Engineering, Irvine, California, USA

⁶Department of Pediatrics, University of Wisconsin-Madison, Madison, Wisconsin, USA

Correspondence

Farhan Raza MD, 600 Highland Ave, CSC-E5/582B, University of Wisconsin-Madison, Hospitals and Clinics, Madison, WI 53792 USA.

Email: fraza@medicine.wisc.edu

Funding information

University of Wisconsin-Madison Department of Medicine Pilot Grant, Grant/Award Number: 233-AAH9756

Abstract

Background: Among subjects with exercise intolerance and suspected early-stage pulmonary hypertension (PH), early identification of pulmonary vascular disease (PVD) with noninvasive methods is essential for prompt PH management.

Hypothesis: Rest gas exchange parameters (minute ventilation to carbon dioxide production ratio: V_E/VCO_2 and end-tidal carbon dioxide: $ETCO_2$) can identify PVD in early-stage PH.

Methods: We conducted a retrospective review of 55 subjects with early-stage PH (per echocardiogram), undergoing invasive exercise hemodynamics with cardiopulmonary exercise test to distinguish exercise intolerance mechanisms. Based on the rest and exercise hemodynamics, three distinct phenotypes were defined: (1) PVD, (2) pulmonary venous hypertension, and (3) noncardiac dyspnea (no rest or exercise PH). For all tests, $*p < .05$ was considered statistically significant.

Results: The mean age was 63.3 ± 13.4 years (53% female). In the overall cohort, higher rest V_E/VCO_2 and lower rest $ETCO_2$ (mm Hg) correlated with high rest and exercise pulmonary vascular resistance (PVR) ($r \sim 0.5-0.6^*$). On receiver-operating characteristic analysis to predict PVD (vs. non-PVD) subjects with noninvasive metrics, area under the curve for pulmonary artery systolic pressure (echocardiogram) = 0.53, rest $V_E/VCO_2 = 0.70^*$ and $ETCO_2 = 0.73^*$. Based on this, optimal thresholds of rest $V_E/VCO_2 > 40$ mm Hg and rest $ETCO_2 < 30$ mm Hg were applied to the overall cohort. Subjects with both abnormal gas exchange parameters ($n = 12$, vs. both normal parameters, $n = 19$) had an exercise PVR $5.2 \pm 2.6^*$ (vs. 1.9 ± 1.2), mPAP/CO slope

Abbreviations: CO, cardiac output; CPET, cardiopulmonary exercise test; $ETCO_2$, end-tidal carbon dioxide pressure; mPAP, mean pulmonary artery pressure; PVR, pulmonary vascular resistance; V_E/VCO_2 , minute ventilation to carbon dioxide production ratio.

This is an open access article under the terms of the Creative Commons Attribution License, which permits use, distribution and reproduction in any medium, provided the original work is properly cited.

© 2022 The Authors. *Clinical Cardiology* published by Wiley Periodicals, LLC.

with exercise $10.2 \pm 6.0^*$ (vs. 2.9 ± 2.0), and none included subjects from the noncardiac dyspnea group.

Conclusions: In a broad cohort of subjects with suspected early-stage PH, referred for invasive exercise testing to distinguish mechanisms of exercise intolerance, rest gas exchange parameters ($V_E/VCO_2 > 40$ mm Hg and $ETCO_2 < 30$ mm Hg) identify PVD.

KEYWORDS

cardiopulmonary exercise test, $ETCO_2$, invasive exercise hemodynamics, pulmonary hypertension, pulmonary vascular disease, V_E/VCO_2

1 | INTRODUCTION

Pulmonary hypertension (PH) diagnosis is based on invasive hemodynamics and is defined by mean pulmonary artery (PA) pressure (mPAP) ≥ 20 mm Hg at rest.¹ While a broad range of pathologies lead to PH,²⁻⁵ a small proportion of patients with precapillary PH with normal left-sided filling pressures (aka. pulmonary vascular disease: PVD) benefit from pulmonary vasodilator therapy.^{1,6} Hence, prompt recognition of PVD with noninvasive clinical tools and selective use of invasive hemodynamic testing is essential in the clinical care of a patient with dyspnea and suspected PH.⁷⁻¹⁰ While early diagnosis of PH and predominant phenotype of PH can be established with exercise invasive hemodynamics¹¹⁻¹⁴ and simultaneous expired gas analysis (cardiopulmonary exercise testing: CPET) at expert centers,¹⁵⁻¹⁷ the noninvasive CPET facilities are more widely available. Moreover, in patients unable to undergo a maximal exercise test and who would benefit from an ambulatory test to identify PVD, the role of gas exchange parameters at rest needs to be explored.^{18,19}

In this study, we report on the invasive exercise cardiopulmonary hemodynamics and simultaneous expired gas analysis from a broad cohort of subjects with exercise intolerance and dyspnea (suspected due to PH at rest and/or with exercise). Our goal is to identify significant patterns of gas exchange parameters among different phenotypes of subjects with dyspnea and improve upon noninvasive rest diagnostic tools for early identification of PVD.

2 | METHODS

2.1 | Study design and cohort

We conducted a retrospective review of a cohort of subjects presenting to the University of Wisconsin (UW)-Madison PH clinic for exercise intolerance and dyspnea with New York Heart Association Class II-III. With a significant burden of subjective symptoms, and yet subclinical-mild PH and relatively preserved right ventricular (RV) function on echocardiogram, the subjects were referred for an invasive exercise hemodynamic study with CPET to discriminate mechanisms of exercise intolerance. These mechanisms may include chronotropic incompetence, poor pulmonary compliance, rapid

rise of intracardiac filling pressure, valvular heart disease, and/or peripheral muscular limitations.²⁰ Early-stage PH and referral for exercise hemodynamic study was based on low-intermediate probability of PH per ESC/ERS guidelines.⁶ We evaluated 55 consecutive subjects over a 1-year period. All subjects underwent clinical evaluation, six-minute walk test, echocardiogram, and pulmonary function testing. Other appropriate diagnostic PH workup (ventilation-perfusion and noncontrast chest computed tomography scans) was performed as indicated. Exclusion criteria for this study were as follows left ventricular ejection fraction $< 50\%$, supplemental oxygen use, oxygen saturation (SpO_2) $< 95\%$ room air on six-minute walk test, primary lung disease with forced expiratory volume in 1 second (FEV1) $< 60\%$ predicted, primary tricuspid valve disease, and age > 80 years.

2.2 | Invasive CPET

All subjects underwent hemodynamic evaluation with a right heart catheterization (RHC) and simultaneous expired gas analysis at rest, during exercise, and at recovery, as previously described²¹ (Figure 1). Pulmonary hemodynamic measurements were obtained with a balloon-tipped, double-lumen, fluid-filled 7 Fr PA catheter via an internal jugular vein approach. Cardiac output (CO) was measured via both direct Fick principle and thermodilution methods. After the fluid-filled catheter placement in the PA, a nose clip and a mouthpiece with a saliva trap were placed to confirm an air leak-free system. The mouthpiece was connected to an umbilical adapter and further connected to Metabolic Ultima™ Cardio2® gas exchange analysis system (MedGraphics) for a breath-by-breath analysis. After connection with the metabolic cart, subjects were observed for 5 minutes to achieve a steady rest state, and after reaching equilibrium, resting gas exchange parameters are recorded. A PA mixed venous sample was drawn at the same time for direct Fick CO at rest.

After rest hemodynamics were recorded, the legs were placed on the pedals of a stationary supine ergometer and the subject's upper body was lifted to a 45° incline with a firm wedge-shaped pillow. The transducer was reequilibrated at the level of the left atrium. After 5 minutes, repeat hemodynamics were recorded.

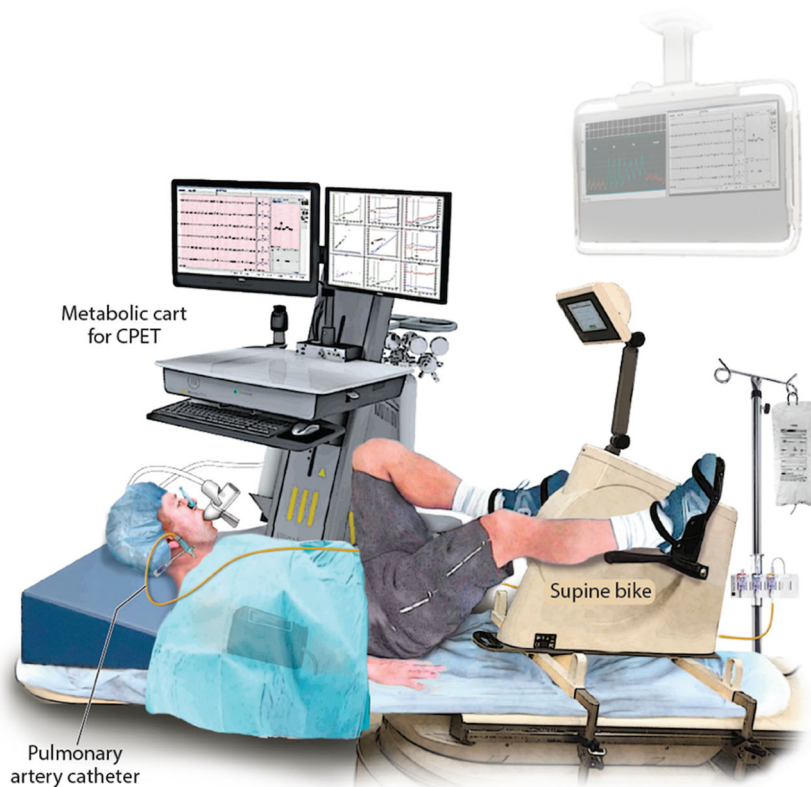


FIGURE 1 Representative figure of invasive exercise hemodynamics with cardiopulmonary exercise testing. CPET, cardiopulmonary exercise test.

Subsequently, subjects were exercised on a semirecumbent cycle ergometer at 60 rpm with continuous electrocardiographic monitoring. Exercise was started with unloaded peddling (0 W) for 2 minutes and then resistance increased on an incremental 10–20 W/min protocol. Mean PA pressures and mean PA wedge pressures (PAWPs) were recorded every 20–25 W till peak exercise to trend the pressures, which increased confidence in peak-exercise pressure readings. Near peak exercise (limited by symptoms), a mixed venous sample from the distal PA port was taken (while the subjects were still exercising), VO_2 was noted (for direct Fick CO for peak exercise), and hemodynamic parameters (PA pressure, PAWP, RV, and right atrial pressures) were recorded with reported mean values (averaged over 3–5 respiratory cycles). The PA catheter and venous sheath were removed at the end of the study. A radial arterial line was not used.

2.3 | Statistical analysis

Categorical variables are summarized as counts and percentages and differences were assessed using either the χ^2 statistic or Fisher exact test, as appropriate. Continuous data are presented as mean \pm SD and statistical significance was tested using Student *t* test and analysis of variance (ANOVA) test, as appropriate. However, for non-normally distributed data, Wilcoxon rank-sum and Kruskal–Wallis tests were used. Post hoc pairwise comparisons were performed among different groups. Simple linear regression analysis was used to examine correlations between invasive hemodynamics and expired

gas exchange (CPET) parameters. Receiver-operating characteristic (ROC) analysis was performed to assess the area under the curve (AUC) using gas exchange parameters at rest and after exercise to predict PVD. Tests of the AUC evaluated the hypothesis that the AUC was different from 0.50. The optimal thresholds for rest gas exchange parameters were identified with values that maximized the sum of sensitivity plus specificity. For all tests, *p* values less than .05 were considered statistically significant. Data were analyzed in SPSS v26.0 (IBM Corp.) and R (version 4.0.3).

3 | RESULTS

3.1 | Hemodynamic profiling into PVD, pulmonary venous hypertension (PVH), and noncardiac dyspnea (NCD) groups

After the invasive exercise hemodynamics, a final diagnosis of a predominant World Health Organization (WHO) group was established. The distribution of subjects in different PH WHO groups was (*n*, %): WHO Group I (10, 18%), WHO Group II (33, 60%), WHO Group III (2, 4%), and WHO Group IV (2, 4%). Eight subjects (14%) had no rest or exercise PH. The overall cohort was classified into three groups based on resting hemodynamics, and also taking exercise hemodynamics into the account:

1. PVD (*n* = 14): PVD group had rest mPAP \geq 20 mm Hg, PAWP \leq 15 mm Hg, and pulmonary vascular resistance (PVR) \geq 3 Woods units

- (WU). With exercise, mPAP/CO slope was ≥ 3 mm Hg/L/min,¹⁷ peak exercise transpulmonary resistance (TPR) ≥ 3 mm Hg/L/min,²² PAWP/CO slope with exercise < 2 mm Hg/L/min, and mPAP > 30 mm Hg.²³
2. PVH ($n = 33$): PVH had rest mPAP ≥ 20 mm Hg and PAWP > 15 mm Hg. With exercise, mPAP/CO slope was ≥ 3 mm Hg/L/min, TPR ≥ 3 mm Hg/L/min,²² PAWP/CO slope ≥ 2 mm Hg/L/min,²⁴ and mPAP > 30 mm Hg. Two subjects with rest mPAP < 20 mm Hg and PAWP ≤ 15 mm Hg were classified into the PVH group due to their exercise hemodynamics (exercise mPAP = 37 ± 7 mm Hg, PAWP = 24 ± 2 mm Hg, mPAP/CO = 4.7 ± 1.0 mm Hg/L/min, PAWP/CO = 2.9 ± 0.6 mm Hg/L/min, and TPR = 4.1 ± 0.8 mm Hg/L/min).
 3. The NCD ($n = 8$) group had rest mPAP < 20 mm Hg, PAWP ≤ 15 mm Hg, and PVR < 3 WU. With exercise, mPAP/CO slope is < 3 mm Hg/L/min and TPR is < 3 mm Hg/L/min. Three subjects with mPAP 20–24 mm Hg were classified into this group due to: rest PAWP < 15 mm Hg, rest PVR < 3 WU, and they did not meet exercise PH criteria (as mentioned above: mPAP/CO slope and exercise TPR).

The PVD group ($n = 14$) comprised of a combination of WHO Group I/III/IV, the PVH group ($n = 33$) comprised of a WHO Group II, and the NCD group comprised of subjects with no rest or exercise PH ($n = 8$). The distribution of postcapillary and precapillary phenotypes was identical to the incidence reported in PH epidemiological studies.^{25,26} Among the subjects diagnosed with PH ($n = 47$), the incidence of postcapillary PH phenotype (WHO Group II) was 70% ($n = 33$), and 30% for precapillary PH phenotype ($n = 14$). All PVD with exercise subjects were started on PH vasodilator therapy, while none of the PVH or NCD subjects was offered PH therapy.^{8,17–21}

3.2 | PVD, PVH, and NCD groups: Clinical characteristics

The clinical and imaging profile of three groups is represented in Table 1. The PVD group had a higher incidence of scleroderma and the lowest diffusion capacity of carbon monoxide on pulmonary function tests. The two subjects in WHO Group III had a primary diagnosis of sleep-disordered breathing. As mentioned previously, chronic obstructive pulmonary disease patients with FEV1 $< 60\%$ were excluded from the study. The PVH group had significant comorbidities (hypertension, atrial fibrillation, obstructive sleep apnea, and obesity), lowest six-minute walk distance, and the highest brain natriuretic peptide (BNP) levels. The NCD group had patients who were younger, less burden of comorbidities, and near-normal BNP level.

3.3 | PVD, PVH, and NCD groups: Hemodynamic and metabolic profile

The hemodynamic profile of the three groups is summarized in Table 2. The peak PAWP ranged from 22 to 38 mm Hg in the PVH

group, while it ranged from 15 to 22 mm Hg in the PVD group. Among the three PVD subjects with PAWP ≥ 20 mm Hg (22 mm Hg among all three subjects), the PAWP/CO slope was 1.5 ± 0.4 (mm Hg/L/min) and the PAWL (peak exercise PAWP-indexed to peak workload in W/body weight [kg]) was 17.1 ± 3.8 (mm Hg/W/kg), consistent with the absence of postcapillary PH.^{24,27}

The augmentation of CO with exercise was significantly and equally impaired for both PVD and PVH groups ($< 80\%$), in comparison to the NCD group ($> 120\%$). This was contributed equally by both stroke volume and heart rate. The net peripheral oxygen extraction ($C[a - v]O_2$ [ml/dl]) from rest to exercise was similar among all the three groups: PVD (5.9– \rightarrow 11.2), PVH (5.6– \rightarrow 10.9) and NCD (4.5– \rightarrow 10.4). Among all groups, PVR decreased somewhat with exercise. The peak workload was also equally impaired (peak watts and VO_2) in PVD and PVH groups, in comparison to the NCD. Anaerobic threshold (respiratory exchange ratio at peak exercise > 1.05) was achieved by 50% of PVD (7/14), 39% of PVH (13/33), and 100% of NCD (8/8) subjects.

The gas exchange parameters (minute ventilation to carbon dioxide production ratio: V_E/VCO_2 and end-tidal carbon dioxide: $ETCO_2$) were incrementally abnormal in this order: PVD $>$ PVH $>$ NCD. The differentiable response of gas exchange parameters between the three groups was significant at rest and changed in a similar fashion with exercise among the three groups. The breathing reserve was normal ($> 20\%$) and SpO_2 remained $\geq 95\%$ (on pretest six-minute walk test and during invasive exercise hemodynamic study) in all subjects in the whole cohort.

3.4 | Rest gas exchange parameters (V_E/VCO_2 and $ETCO_2$) and hemodynamic profiles

To investigate the clinical utility of rest gas exchange parameters in recognizing PVD in subjects with dyspnea, we identified a moderate correlation of rest V_E/VCO_2 and $ETCO_2$ with rest PVR and exercise PVR (Figure 2). On ROC analysis to predict PVD (vs. non-PVD) phenotype, the AUC was significant for both rest V_E/VCO_2 (0.70, $p < .01$) and $ETCO_2$ (0.73, $p < .01$). In comparison to the commonly utilized noninvasive parameter of echocardiogram based pulmonary artery systolic pressure (PASP) to diagnose PH (AUC = 0.53, $p = .08$), rest V_E/VCO_2 and $ETCO_2$ performed better in predicting PVD. Of note, AUC was similar for exercise V_E/VCO_2 (0.76, $p < .01$) and $ETCO_2$ (0.73, $p < .01$) in predicting PVD. Correlations of rest V_E/VCO_2 and $ETCO_2$ with exercise transpulmonary resistance (TPR) were weaker ($r = .36$, $p = .007$ for V_E/VCO_2 and $r = .25$, $p = .06$ for $ETCO_2$).

3.5 | Utility of rest gas exchange parameters for clinical screening

On ROC analysis to predict PVD phenotype with exercise, we identified optimal thresholds for rest $V_E/VCO_2 > 40$ mm Hg and $ETCO_2 < 30$ mm Hg. These thresholds are consistent with historically

TABLE 1 Clinical and echocardiographic features of three groups: PVD, PVH, and NCD.

Parameters	PVD (n = 14)	PVH (n = 33)	NCD (n = 8)	p Value
Clinical				
Age (years)	67 ± 10	65 ± 13	51 ± 14	.01 ^{†,‡}
Female sex, n (%)	7 (50%)	16 (48%)	6 (75%)	.39
Comorbidities, n (%)				
DM	4 (28%)	7 (21%)	1 (8%)	.67
HTN	9 (64%)	28 (85%)	3 (37%)	.02
CKD	2 (14%)	13 (39%)	1 (12%)	.12
Afib	3 (21%)	16 (48%)	1 (12%)	.07
OSA	4 (29%)	13 (39%)	2 (25%)	.64
CAD	3 (21%)	13 (39%)	0 (0%)	.08
COPD	2 (14%)	6 (18%)	1 (12%)	.90
PE history	3 (21%)	5 (15%)	0 (0%)	.39
Scleroderma	6 (43%)	1 (3%)	1 (12%)	.002*
BMI (kg/m ²)	25.7 ± 4.7	33.2 ± 8.0	28.1 ± 2.7	.01
6MWD (m)	362 ± 80	251 ± 103	476 ± 47	<.001
BNP (pg/ml)	192 ± 207	294 ± 273	51 ± 51	.24
DLCO (%)	56 ± 15	68 ± 16	85 ± 20	.01
Echocardiogram ^a				
LVEF (%)	58 ± 9	57 ± 11	59 ± 8	.85
TAPSE (cm)	2.0 ± 4.8	2.0 ± 6.3	2.0 ± 0.7	.96
Lateral E/e'	7.5 ± 3.0	13.7 ± 6.9	7.9 ± 2.3	.03
LAVI (ml/m ²)	34 ± 16	43 ± 12	22 ± 2	.004
PASP (mm Hg)	45 ± 13	50 ± 19	24 ± 6	.06

Abbreviations: Afib, atrial fibrillation; BMI, body mass index; BNP, brain natriuretic peptide; CKD, chronic kidney disease; CAD, coronary artery disease; COPD, chronic obstructive pulmonary disease; DM, diabetes mellitus; DLCO, diffusion capacity of carbon monoxide; E/E', ratio of early diastolic velocity of mitral inflow to early diastolic tissue Doppler velocity of the lateral mitral annulus; HTN, hypertension; LAVI, left atrial volume index; LVEF, left ventricular ejection fraction; 6MWD, six-minute walk distance; NCD, noncardiac dyspnea; OSA, obstructive sleep apnea; PASP, pulmonary artery systolic pressure; PE, pulmonary embolism; PVD, pulmonary vascular disease; PVH, pulmonary venous hypertension; TAPSE, tricuspid annular plane excursion.

^aEcho was performed within 1 month after heart catheterization.

For pairwise comparisons, *PVD versus PVH, [†]PVD versus NCD, [‡]PVH versus NCD.

reported thresholds for significant PH.²⁷ Applying these thresholds for rest V_E/VCO_2 and $ETCO_2$ to the overall cohort, we identified 26 subjects with both normal, 17 subjects with one abnormal, and 12 subjects with both abnormal. The hemodynamic profile of this distribution is shown in Figure 3. Of note, none of the subjects in the NCD group had two abnormal rest gas exchange parameters.

3.6 | Validation cohort

To validate the clinical utility of rest $V_E/VCO_2 > 40$ mm Hg and $ETCO_2 < 30$ mm Hg in identifying PVD, we identified a cohort of

subjects evaluated at Weill Cornell Medical Center for dyspnea and suspected PH. During a 6-month time period, we identified 25 consecutive subjects who underwent a noninvasive CPET on a cycle ergometer followed closely by a resting RHC (median interval between the two studies: 21 days; interquartile range: 7, 36). The mean age for this cohort was 57.7 ± 15.5 and 40% were female. We applied the thresholds for rest $V_E/VCO_2 > 40$ mm Hg and $ETCO_2 < 30$ mm Hg as abnormal rest gas exchange parameters.

Among the overall validation cohort, nine subjects with both abnormal rest gas exchange parameters had a PVR of 7.2 ± 2.5 WU (mPAP = 40 ± 8 mm Hg; PAWP = 9 ± 4 mm Hg; CO = 4.7 ± 2.1 L/min). Nine subjects with one abnormal rest gas exchange parameter had a

TABLE 2 Hemodynamic and metabolic features of three groups: PVD, PVH, and NCD.

Parameters	PVD (n = 14)	PVH (n = 33)	NCD (n = 8)	p Value
Rest				
mPAP ^a (mm Hg)	37 ± 8	33 ± 9	21 ± 4	.001 ^{†‡}
PAWP (mm Hg)	13 ± 2	18 ± 4	12 ± 2	<.001 ^{*‡}
Direct Fick CO (L/min)	4.3 ± 1.0	5.1 ± 1.2	5.7 ± 0.9	.015 [†]
Direct Fick CI (L/min/m ²)	2.4 ± 0.5	2.5 ± 0.5	3.0 ± 0.5	.017 ^{†‡}
SvO ₂ (%)	65 ± 5	64 ± 6	72 ± 7	.003 ^{†‡}
DPG (mm Hg)	11 ± 7	6 ± 5	2 ± 2	.002 ^{*‡}
PVR (WU)	5.7 ± 2.1	3.0 ± 1.8	1.4 ± 0.7	<.001 ^{*‡}
PCa (ml/mm Hg)	2.1 ± 0.9	3.9 ± 1.9	5.4 ± 1.4	<.001 ^{*‡}
Peak exercise				
mPAP (mm Hg)	55 ± 9	51 ± 12	29 ± 3	<.001 ^{†‡}
PAWP (mm Hg)	19 ± 3	31 ± 7	18 ± 2	<.001 ^{†‡}
Direct Fick CO (L/min)	7.4 ± 1.8	7.8 ± 2.3	12.7 ± 4.6	<.001 ^{†‡}
Direct Fick CI (L/min/m ²)	4.1 ± 0.9	3.9 ± 0.9	6.7 ± 2.4	<.001 ^{†‡}
SvO ₂ (%)	38 ± 10	30 ± 10	40 ± 8	.01 [†]
DPG (mm Hg)	16 ± 7	6 ± 6	4 ± 4	<.001 ^{*‡}
PVR (WU)	5.1 ± 2.2	2.9 ± 2.2	1.1 ± 0.6	<.001 ^{*‡}
PCa (ml/mm Hg)	1.6 ± 0.6	2.4 ± 1.1	4.3 ± 1.9	<.001 ^{†‡}
Delta with exercise				
mPAP/CO slope (mm Hg/L/min)	12.9 ± 2.9	9.6 ± 5.3	1.8 ± 1.0	.03 ^{†‡}
PAWP/CO slope (mm Hg/L/min)	1.4 ± 0.5	11.5 ± 8.2	1.0 ± 0.6	.02 ^{*‡}
PAWL ^b (mm Hg/W/kg)	18.5 ± 5.6	39.5 ± 18.7	14.8 ± 8.5	<.001 ^{*‡}
Peak-exercise TPR (mm Hg/L/min)	8.1 ± 3.4	7.3 ± 3.8	1.7 ± 0.4	<.001 ^{†‡}
CPET: Peak workload parameters				
Peak workload (W)	55 ± 31	57 ± 29	125 ± 66	<.001 ^{†‡}
Indexed workload ^a	0.74 ± 0.38	0.64 ± 0.36	1.58 ± 0.81	<.001 ^{†‡}
Peak VO ₂ (mL/kg/min)	10.3 ± 3.2	9.2 ± 2.4	17.2 ± 8.2	<.001 ^{†‡}
Peak O ₂ pulse (ml/min)	11.7 ± 13.2	10.6 ± 7.3	10.6 ± 4.4	.92
Peak heart rate	94 ± 15	93 ± 20	125 ± 22	<.001 ^{†‡}
RER	1.00 ± 0.09	1.00 ± 0.11	1.12 ± 0.04	.02 ^{†‡}
CPET: Gas exchange parameters				
Rest V _E /VCO ₂	46 ± 8	42 ± 6	37 ± 3	.03 [†]
Exercise V _E /VCO ₂	44 ± 9	39 ± 8	32 ± 3	.003 ^{†‡}
Rest ETCO ₂ (mm Hg)	29 ± 5	32 ± 4	35 ± 3	.017 [†]
Exercise ETCO ₂ (mm Hg)	28 ± 6	31 ± 5	38 ± 3	<.001 ^{†‡}

Abbreviations: CO, cardiac output; CI, cardiac index; DPG, diastolic pulmonary gradient; ETCO₂, end-tidal carbon dioxide pressure; mPAP, mean pulmonary artery pressure; NCD, noncardiac dyspnea; O₂ pulse, VO₂/heart rate; PAWL, peak exercise pulmonary artery wedge pressure/indexed peak workload (peak W/weight [kg]); PAWP, pulmonary artery wedge pressure; PCa, pulmonary compliance; PVD, pulmonary vascular disease; PVH, pulmonary venous hypertension; PVR, pulmonary vascular resistance; RER, respiratory exchange ratio; SvO₂, mixed venous sample saturation; TPR, transpulmonary resistance (mean PAP/CO); V_E/VCO₂, minute ventilation to carbon dioxide production ratio; VO₂, oxygen consumption.

^aRest mPAP range: PVD = 26–58; PVH = 15–52 (among two subjects had rest mPAP < 20 and PAWP < 15, at peak exercise = mPAP 37 ± 7, PAWP 24 ± 2, mPAP/CO 4.7 ± 1.0, PAWP/CO 2.9 ± 0.6 TPR 4.1 ± 0.8 mm Hg/L/min); NCD = 18–23.

^bIndexed workload (W/kg) <0.5 excluded (PVD: 10/14; PVH: 20/33; NCD: 8/8).

For pairwise comparisons, *PVD versus PVH, †PVD versus NCD, and ‡PVH versus NCD.

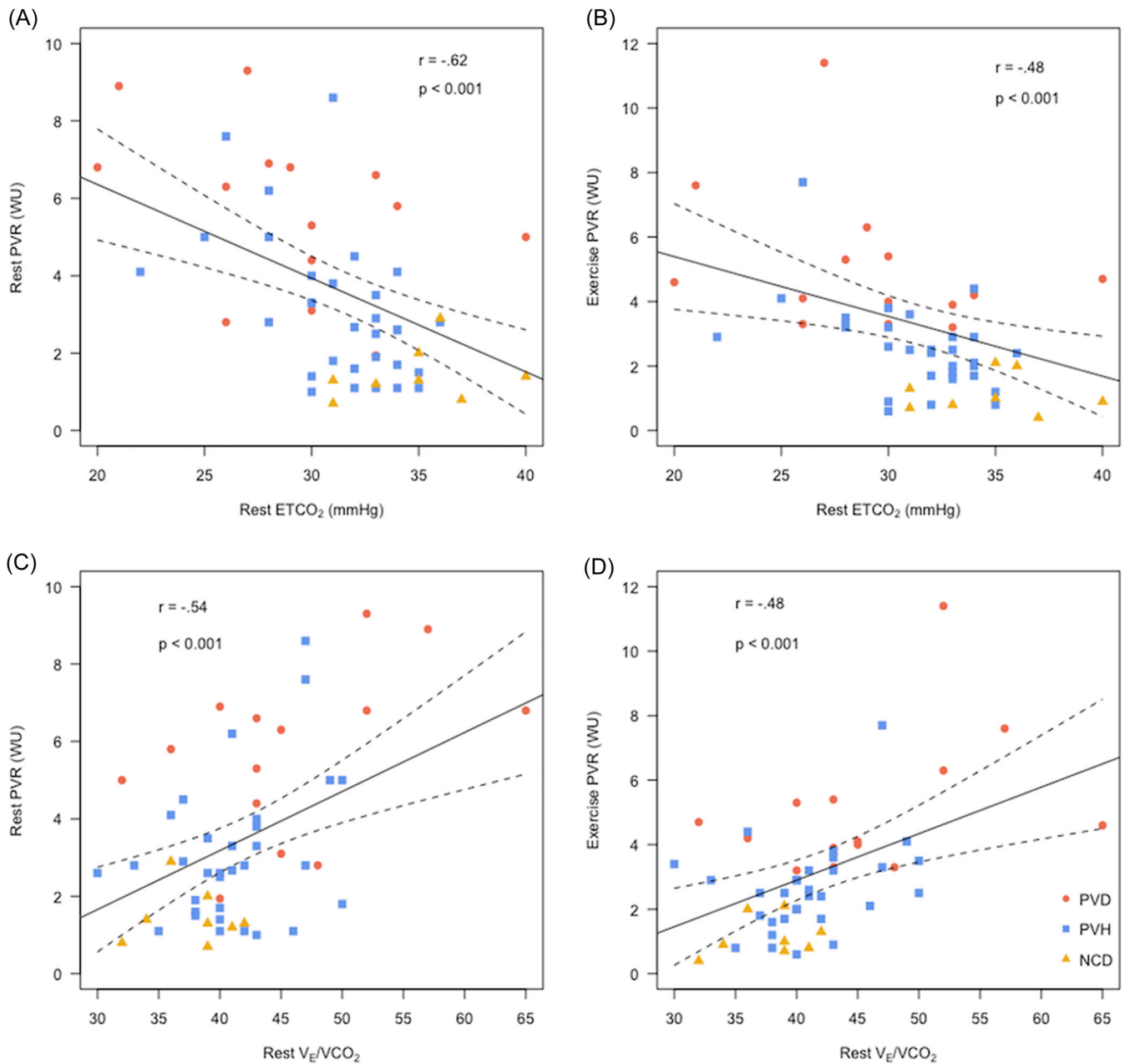


FIGURE 2 Correlation of rest ETCO_2 (A&B) and V_E/V_{CO_2} (C&D) with rest and exercise PVR. ETCO_2 , end-tidal carbon dioxide pressure; PVR, pulmonary vascular resistance; V_E/V_{CO_2} , minute ventilation to carbon dioxide production ratio.

PVR of 4.2 ± 1.4 WU (mPAP = 34 ± 7 mm Hg; PAWP = 14 ± 6 mm Hg; $\text{CO} = 5.1 \pm 2.8$ L/min). Seven subjects with both normal rest gas exchange parameters had a PVR of 2.5 ± 1.5 WU (mPAP = 29 ± 12 mm Hg; PAWP = 16 ± 6 mm Hg; $\text{CO} = 6.2 \pm 2.3$ L/min).

4 | DISCUSSION

In this study, we report on the utility of rest gas exchange parameters (V_E/V_{CO_2} and ETCO_2) in a diverse cohort of subjects undergoing invasive exercise testing for exercise intolerance and early-stage PH. Rest gas exchange parameters were predictive of the presence or

absence of PVD. Moreover, in both study and validation cohorts, none of the subjects with noncardiac exercise limitations had both abnormal rest gas exchange parameters. In evaluating patients with undefined dyspnea in the ambulatory setting, this simple noninvasive resting tool may allow practitioners to screen patients for PVD, and possibly exclude those who are deconditioned and would garner minimal benefit from invasive testing.

Early recognition of PH phenotypes with a physiological method of exercise is essential and more sensitive than saline loading.^{28,29} With the standardization of exercise hemodynamics, we utilized the widely accepted standards of pressure–flow relationships and workload-dependent abnormalities,^{17,23,24,30} and

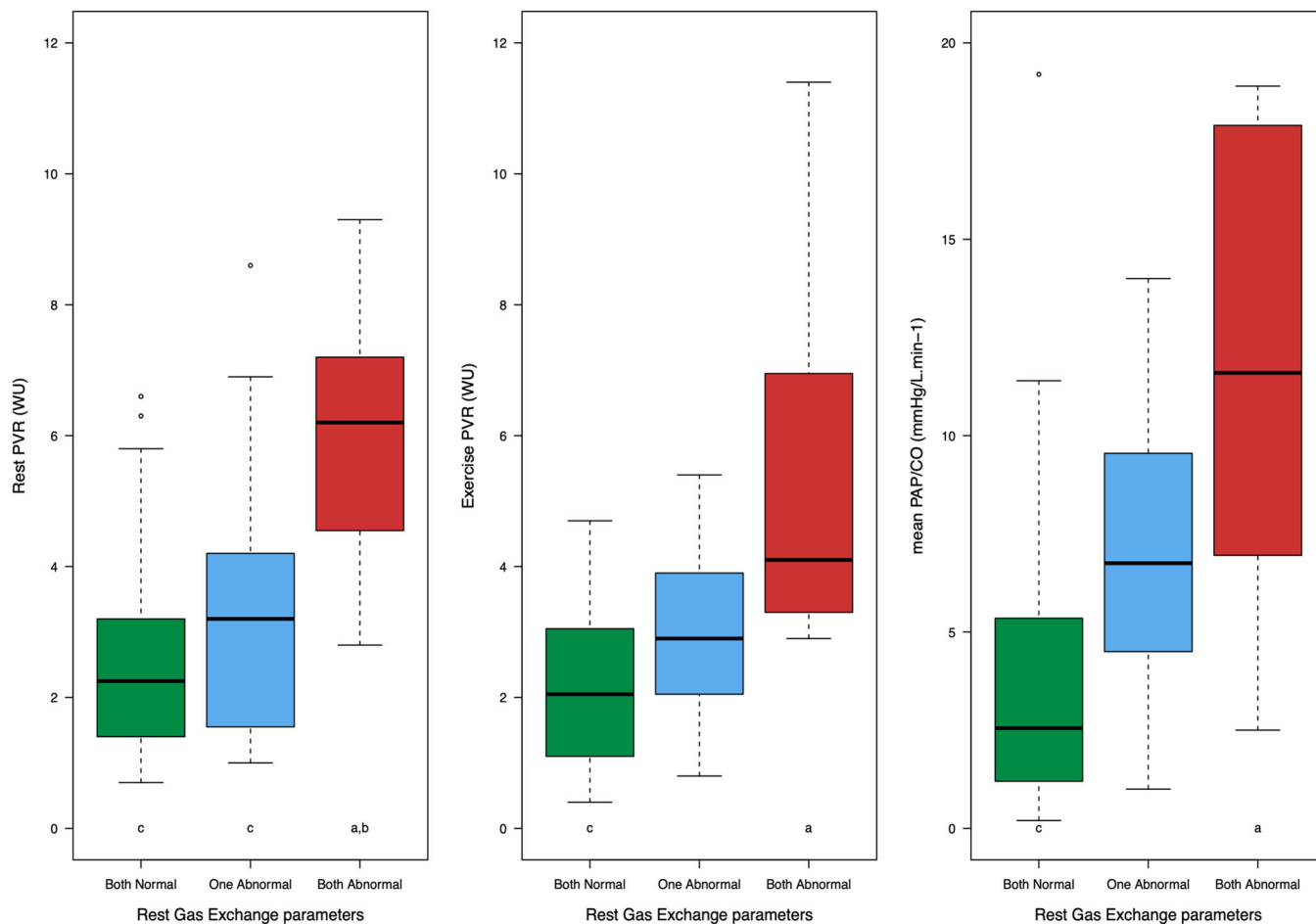


FIGURE 3 Distribution of rest gas exchange parameters among the overall cohort and hemodynamic profile. Abnormal thresholds for rest $ETCO_2$ (<30 mm Hg) and V_E/VCO_2 (>40 mm Hg) Both normal: green ($n = 26$), one abnormal: blue ($n = 17$), both abnormal: red ($n = 12$). ANOVA $p < .001$ for all three analyses. For pairwise comparisons, both normal (green) = a, one abnormal (blue) = b, and both abnormal (red) = c. ANOVA, analysis of variance; CO, cardiac output; $ETCO_2$, end-tidal carbon dioxide pressure; mPAP, mean pulmonary artery pressure; PET, cardiopulmonary exercise test; PVR, pulmonary vascular resistance; V_E/VCO_2 , minute ventilation to carbon dioxide production ratio.

identified three distinct clinically relevant groups. In addition to phenotyping PH, exercise testing provides insights into the burden of limitations from varying mechanisms, including cardiac, pulmonary vascular, chronotropic incompetence, and peripheral muscular disease.^{31,32} In this study, both PVD and PVH groups had differentiable cardiopulmonary hemodynamics. However, they were equally impaired, with limitations of poor stroke volume augmentation and blunted heart rate response.

The abnormalities of gas exchange parameters (V_E/VCO_2 and $ETCO_2$) revealed a similar trend at rest and with exercise, which provided an opportunity to explore the clinical utility of rest V_E/VCO_2 and $ETCO_2$ in discriminating PH phenotypes. Moreover, the predictive ability of rest gas exchange parameters to identify PVD was significant (based on ROC analysis), in comparison to other widely available noninvasive echocardiographic parameters (PASP).⁸ With this approach, the thresholds for rest V_E/VCO_2 (>40 mm Hg) and $ETCO_2$ (<30 mm Hg) were similar to historically reported thresholds to identify moderate-severe PH, as summarized in a comprehensive review by Arena et al.²⁷ However, most

studies were based on nonsimultaneous RHC and noninvasive CPET. These include studies focused on PAH^{14,32-38} and heart failure with preserved and reduced ejection.^{31,39-41} Taylor et al.⁴² reported a worsening trend of V_E/VCO_2 and $ETCO_2$ in combined pre-/postcapillary PH, in comparison to isolated postcapillary PH, among 28 subjects with left heart disease-related PH undergoing invasive exercise hemodynamics. Overall, a strong consistent trend in V_E/VCO_2 and $ETCO_2$ among different PH phenotypes in these studies involving subjects of different age and sex improves confidence in our findings.

While most subjects in this study (45/55) had PH at rest, significant exercise intolerance (out-of-proportion to suspected PH) prompted exercise testing to discriminate extracardiopulmonary limitations. Nevertheless, this unique patient cohort meets the goals of this study to investigate the clinical utility of rest gas exchange parameters to identify PVD by clinicians taking care of this “less-sick” population. Hence, we propose that this simplified approach can be expanded to a broad cohort of patients evaluated for dyspnea in an ambulatory setting as a screening tool.

4.1 | Limitations

This was a single-center retrospective study with a moderate sample size. While a majority of the patients had a diagnosis based on resting hemodynamics, the study addresses a need for early identification of PVD with noninvasive gas exchange markers in a specific group of patients with exercise intolerance and dyspnea at an early disease stage. Future studies analyzing gas exchange behavior in exercise PH only are warranted. Lastly, this study protocol did not include a radial arterial line, which limits the use of particular data (arterial oxygen content: CaO_2 and partial pressure of carbon dioxide: PaCO_2) and limits the calculation of dead space. However, all subjects had maintained $\text{SpO}_2 > 95\%$ with the pretest six-minute walk test, and during the invasive exercise hemodynamic study. Hence, it does not affect the goals of this study.

5 | CONCLUSION

In a cohort of subjects with exercise intolerance and suspected early-stage PH, rest $V_E/V\text{CO}_2$ and ETCO_2 can identify patients who are likely to have PVD. Such patients may benefit from a prompt invasive hemodynamic evaluation and PH vasodilator therapy. This simple-to-use diagnostic test can be used as a screening tool in an ambulatory setting.

AUTHOR CONTRIBUTIONS

Farhan Raza and Naga Dharmavaram collected the data. Farhan Raza, Timothy Hess, Ravi Dhingra, James Runo, Naomi Chesler, and Marlowe Eldridge reviewed the data, performed analysis, and formulated the manuscript. Farhan Raza, Amy Chybowski, Callyn Kozitza, and Marlowe Eldridge wrote the manuscript. Supria Batra and Evelyn M. Horn collected data, performed data analysis, and wrote the manuscript section related to the validation cohort. All coauthors reviewed and approved the manuscript before submission.

ACKNOWLEDGMENTS

The authors would like to acknowledge the staff at the UW-Madison cardiac catheterization laboratory for maintaining the invasive cardiopulmonary exercise test laboratory: Mary Sue Ireland, Scott Wessels, Chantel Nelson, and Holly Studier. The corresponding author is supported by the University of Wisconsin-Madison Department of Medicine (Grant # 233-AAH9756). However, UW-Madison did not have a role in the study design, data collection, analysis or interpretation, manuscript writing or the decision to submit the manuscript for publication.

CONFLICTS OF INTEREST

The authors declare no conflicts of interest.

DATA AVAILABILITY STATEMENT

The data that support the findings of this study are available from the corresponding author upon reasonable request.

ORCID

Farhan Raza  <http://orcid.org/0000-0001-5750-2034>

REFERENCES

1. Simonneau G, Montani D, Celermajer DS, et al. Haemodynamic definitions and updated clinical classification of pulmonary hypertension. *Eur Respir J*. 2019;53(1). doi:10.1183/13993003.01913-2018
2. Raza F, Alkhouli M, Rogers F, Vaidya A, Forfia P. Case series of 5 patients with end-stage renal disease with reversible dyspnea, heart failure, and pulmonary hypertension related to arteriovenous dialysis access. *Pulm Circ*. 2015;5(2):398-406. doi:10.1086/681266
3. Lacharite-Roberge AS, Raza F, Bashir R, et al. Case series of seven women with uterine fibroids associated with venous thromboembolism and chronic thromboembolic disease. *Pulm Circ*. 2019;9(1):2045894018803873. doi:10.1177/2045894018803873
4. Raza F, Vaidya A, Lacharite-Roberge AS, et al. Initial clinical and hemodynamic results of a regional pulmonary thromboendarterectomy program. *J Cardiovasc Surg*. 2018;59(3):428-437. doi:10.23736/S0021-9509.17.10188-6
5. Raza F, Kozitza C, Chybowski A, et al. Interferon- β -induced pulmonary arterial hypertension: approach to diagnosis and clinical monitoring. *JACC Case Rep*. 2021;3:1-6. doi:10.1016/j.jaccas.2021.02.005
6. Galiè N, Humbert M, Vachiery JL, et al. ESC/ERS Guidelines for the diagnosis and treatment of pulmonary hypertension. *Eur Heart J*. 2015 2016;37:67-119. doi:10.1093/eurheartj/ehv317
7. Thenappan T, Ormiston ML, Ryan JJ, Archer SL. Pulmonary arterial hypertension: pathogenesis and clinical management. *BMJ*. 2018;360:5492. doi:10.1136/bmj.j5492
8. Opatowsky AR, Ojeda J, Rogers F, et al. A simple echocardiographic prediction rule for hemodynamics in pulmonary hypertension. *Circ Cardiovasc Imaging*. 2012;5(6):765-775. doi:10.1161/CIRCIMAGING.112.976654
9. Raza F, Dillane C, Mirza A, et al. Differences in right ventricular morphology, not function, indicate the nature of increased afterload in pulmonary hypertensive subjects with normal left ventricular function. *Echocardiography*. 2017;34(11):1584-1592. doi:10.1111/echo.13699
10. Thenappan T, Shah SJ, Gomberg-Maitland M, et al. Clinical characteristics of pulmonary hypertension in patients with heart failure and preserved ejection fraction. *Circ Heart Fail*. 2011;4(3):257-265. doi:10.1161/CIRCHEARTFAILURE.110.958801
11. Tolle JJ, Waxman AB, Van Horn TL, Pappagianopoulos PP, Systrom DM. Exercise-induced pulmonary arterial hypertension. *Circulation*. 2008;118(21):2183-2189. doi:10.1161/CIRCULATIONAHA.108.787101
12. Saggari R, Khanna D, Furst DE, et al. Exercise-induced pulmonary hypertension associated with systemic sclerosis: four distinct entities. *Arthritis Care Res*. 2010;62(12):3741-3750. doi:10.1002/art.27695
13. Kovacs G, Berghold A, Scheidl S, Olschewski H. Pulmonary arterial pressure during rest and exercise in healthy subjects: a systematic review. *Eur Respir J*. 2009;34(4):888-894. doi:10.1183/09031936.00145608
14. Gläser S, Noga O, Koch B, et al. Impact of pulmonary hypertension on gas exchange and exercise capacity in patients with pulmonary fibrosis. *Respir Med*. 2009;103(2):317-324. doi:10.1016/j.rmed.2008.08.005

15. Jain CC, Borlaug BA. Performance and interpretation of invasive hemodynamic exercise testing. *Chest*. 2020;158:2119-2129. doi:10.1016/j.chest.2020.05.552
16. Berry NC, Manyoo A, Oldham WM, et al. Protocol for exercise hemodynamic assessment: performing an invasive cardiopulmonary exercise test in clinical practice. *Pulm Circ*. 2015;5:610-618. doi:10.1086/683815
17. Lewis GD, Bossone E, Naeije R, et al. Pulmonary vascular hemodynamic response to exercise in cardiopulmonary diseases. *Circulation*. 2013;128:1470-1479. doi:10.1161/CIRCULATIONAHA.112.000667
18. Taylor BJ, Olson TP, Kim CH, MacCarter D, Johnson BD. Use of noninvasive gas exchange to track pulmonary vascular responses to exercise in heart failure. *Clin Med Insights Circ Respir Pulm Med*. 2013;7(1):53-60. doi:10.4137/CCRPMS12178
19. Vaidya A, Golbus JR, Vedage NA, Mazurek J, Raza F, Forfia PR. Virtual echocardiography screening tool to differentiate hemodynamic profiles in pulmonary hypertension. *Pulm Circ*. 2020;10(3):2045894020950225. doi:10.1177/2045894020950225
20. Martens P, et al. Cardiopulmonary exercise testing with echocardiography to identify mechanisms of unexplained dyspnea. *J Cardiovasc Transl Res*. 2022;15(1):116-130.
21. Kozitza CJ, Tao R. Pulmonary vascular distensibility with passive leg raise is comparable to exercise and predictive of clinical outcomes in pulmonary hypertension. *Pulm Circ*. 2022;12:1-10. doi:10.1002/pul2.12029
22. Kovacs G, Herve P, Barbera JA, et al. An Official European Respiratory Society statement: pulmonary haemodynamics during exercise. *Eur Respir J*. 2017;50(5). doi:10.1183/13993003.00578-2017
23. Herve P, Lau EM, Sitbon O, et al. Criteria for diagnosis of exercise pulmonary hypertension. *Eur Respir J*. 2015;46(3):728-737. doi:10.1183/09031936.00021915
24. Eisman AS, Shah RV, Dhakal BP, et al. Pulmonary capillary wedge pressure patterns during exercise predict exercise capacity and incident heart failure. *Circ Heart Fail*. 2018;11:004750. doi:10.1161/CIRCHEARTFAILURE.117.004750
25. Weitsman T, Weisz G, Farkash R, et al. Pulmonary hypertension with left heart disease: prevalence, temporal shifts in etiologies and outcome. *Am J Med*. 2017;130:1272-1279. doi:10.1016/j.amjmed.2017.05.003
26. Guazzi M. Pulmonary hypertension in heart failure preserved ejection fraction prevalence, pathophysiology, and clinical perspectives. *Circ Heart Fail*. 2014;7:367-377. doi:10.1161/CIRCHEARTFAILURE.113.000823
27. Arena R, Guazzi M, Myers J, Grinnen D, Forman DE, Lavie CJ. Cardiopulmonary exercise testing in the assessment of pulmonary hypertension. *Expert Rev Respir Med*. 2011;5:281-293. doi:10.1586/ers.11.4
28. Ho JE, Zern EK, Lau ES, et al. Exercise pulmonary hypertension predicts clinical outcomes in patients with dyspnea on effort. *J Am Coll Cardiol*. 2020;75:17-26. doi:10.1016/j.jacc.2019.10.048
29. Andersen MJ, Olson TP, Melenovsky V, Kane GC, Borlaug BA. Differential hemodynamic effects of exercise and volume expansion in people with and without heart failure. *Circ Heart Fail*. 2015;8(1):41-48. doi:10.1161/CIRCHEARTFAILURE.114.001731
30. Dorfs S, Zeh W, Hochholzer W, et al. Pulmonary capillary wedge pressure during exercise and long-term mortality in patients with suspected heart failure with preserved ejection fraction. *Eur Heart J*. 2014;35:3103-3112. doi:10.1093/eurheartj/ehu315
31. Malhotra R, Bakken K, D'Elia E, Lewis GD. Cardiopulmonary exercise testing in heart failure. *JACC Heart Fail*. 2016;4:607-616. doi:10.1016/j.jchf.2016.03.022
32. Caravita S, Faini A, Deboeck G, et al. Pulmonary hypertension and ventilation during exercise: role of the pre-capillary component. *J Heart Lung Transplant*. 2017;36(7):754-762. doi:10.1016/j.healun.2016.12.011
33. Naeije R, Gerges M, Vachiery JL, Caravita S, Gerges C, Lang IM. Hemodynamic phenotyping of pulmonary hypertension in left heart failure. *Circ Heart Fail*. 2017;10(9):1-9. doi:10.1161/CIRCHEARTFAILURE.117.004082
34. Yasunobu Y, Oudiz RJ, Sun XG, Hansen JE, Wasserman K. End-tidal PCO₂ abnormality and exercise limitation in patients with primary pulmonary hypertension. *Chest*. 2005;127:1637-1646. doi:10.1378/chest.127.5.1637
35. Miyamoto S, Nagaya N, Satoh T, et al. Clinical correlates and prognostic significance of six-minute walk test in patients with primary pulmonary hypertension: comparison with cardiopulmonary exercise testing. *Am J Respir Crit Care Med*. 2000;161(2):487-492. doi:10.1164/ajrccm.161.2.9906015
36. Riley MS, Porszasz J, Engelen MPKJ, Brundage BH, Wasserman K. Gas exchange responses to continuous incremental cycle ergometry exercise in primary pulmonary hypertension in humans. *Eur J Appl Physiol*. 2000;83(1):63-70. doi:10.1007/s004210000240
37. Holverda S, Bogaard HJ, Groepenhoff H, Postmus PE, Boonstra A, Vonk-Noordegraaf A. Cardiopulmonary exercise test characteristics in patients with chronic obstructive pulmonary disease and associated pulmonary hypertension. *Respiration*. 2008;76(2):160-167. doi:10.1159/000110207
38. Riley MS, Pórszász J, Engelen MPKJ, Shapiro SM, Brundage BH, Wasserman K. Responses to constant work rate bicycle ergometry exercise in primary pulmonary hypertension: The effect of inhaled nitric oxide. *J Am Coll Cardiol*. 2000;36(2):547-556. doi:10.1016/S0735-1097(00)00727-0
39. Jaussaud J, Aimable L, Douard H. The time for a new strong functional parameter in heart failure: the VE/VCO₂ slope. *Int J Cardiol*. 2011;147(2):189-190. doi:10.1016/j.ijcard.2010.10.110
40. Guazzi M, Labate V, Cahalin LP, Arena R. Cardiopulmonary exercise testing reflects similar pathophysiology and disease severity in heart failure patients with reduced and preserved ejection fraction. *Eur J Prev Cardiol*. 2014;21(7):847-854. doi:10.1177/2047487313476962
41. Klaassen S, Liu L, Hummel YM, et al. Clinical and hemodynamic correlates and prognostic value of VE/VCO₂ slope in patients with heart failure with preserved ejection fraction and pulmonary hypertension. *J Card Fail*. 2017;23(11):777-782. doi:10.1016/j.cardfail.2017.07.397
42. Taylor BJ, Smetana MR, Frantz RP, Johnson BD. Submaximal exercise pulmonary gas exchange in left heart disease patients with different forms of pulmonary hypertension. *J Card Fail*. 2015;21(8):647-655. doi:10.1016/j.cardfail.2015.04.003

How to cite this article: Raza F, Dharmavaram N, Hess T, et al. Distinguishing exercise intolerance in early-stage pulmonary hypertension with invasive exercise hemodynamics: rest V_E/VCO_2 and $ETCO_2$ identify pulmonary vascular disease. *Clin Cardiol*. 2022;45:742-751. doi:10.1002/clc.23831