

UCLA

UCLA Previously Published Works

Title

Chapter 14: Radiation-Induced Heart Disease: Long-Term Manifestations, Diagnosis, and Management.

Permalink

<https://escholarship.org/uc/item/4zd4r7qh>

ISBN

978-0-323-44227-5

Authors

Finch, William
Lee, Michael S
Yang, Eric H

Publication Date

2017-11-01

Peer reviewed

CHAPTER 14

Radiation-Induced Heart Disease

Long-Term Manifestations, Diagnosis, and Management

William Finch, MD*, Michael S. Lee, MD, Eric H. Yang, MD

INTRODUCTION

Radiation therapy (RT) is an important cause of cardiovascular disease in patients treated for cancer, especially in those receiving chest radiotherapy for Hodgkin disease or breast cancer (Table 14.1) as well as after total body irradiation for bone marrow transplantation.¹ Factors that influence the development of cardiotoxicity include the total radiation dose and the dose fractionation. Radiation damage may involve the pericardium, myocardium, valves, coronary arteries, and the conduction system (Box 14.1, Fig. 14.1).^{2,3} Injury to the endothelial cells in these compartments, inflammation, and fibrosis are key elements. Diagnosis and treatment do not differ from conventional heart disease; however, screening for radiation-induced heart disease (RIHD) should be pursued even in asymptomatic patients in an effort to ameliorate at least some of the disease manifestations.

RT is commonly used as an adjuvant treatment modality in patients with breast cancer (nearly 40% in the Surveillance Epidemiology, and End Results registry).⁴ Randomized trials and meta-analyses confirm that radiation exposure, especially of the left chest, is associated with an increased cardiovascular mortality, attributed mainly to ischemic heart disease and acute myocardial infarction.^{4–6}

In patients who received mediastinal RT for Hodgkin disease, cardiovascular mortality becomes a leading cause of death over time.^{7,8} Extending prior studies,^{9–11} the most recent and comprehensive analysis of more than 2500 patients who underwent mediastinal RT between 1965 and 1995 and had survived more than 5 years

reported a cumulative incidence of any cardiovascular disease of 54.6% after 40 years.¹²

Mediastinal RT increased the hazard for any type of cardiovascular disease by a factor of 3.6 (95% confidence interval [CI] 2.8–4.6). The highest risk was found for valvular heart disease (hazard ratio [HR] 6.6, 95% CI 4.0–10.8), followed by an equivalent risk of coronary heart disease or CHF. At 20 years out from RT, childhood cancer survivors develop clinically relevant valvular heart disease at a cumulative incidence rate of 6% versus 3% for other RIHD manifestations (Fig. 14.2).

There is little discussion in the literature on the impact of radiation from diagnostic imaging studies on the heart.^{13,14} However, doses of RT are frequently greater than 10 Gy, compared with the radiation dose of a computed tomography (CT) scan of around 0.01 Gy. Therefore, it is unlikely that the radiation from diagnostic CT is cardiotoxic.

RELATION OF RADIATION FIELD, DOSE, AND FRACTIONATION TO RADIATION-INDUCED HEART DISEASE

Both the cumulative radiation dose and the dose fractionation (the division of the total dose into smaller fractions separated by time) are factors in the development of radiation cardiotoxicity. In animal studies, single (unfractionated) radiograph doses of 35 to 40 Gy caused severe heart failure (HF) after several months, whereas 10 to 15 Gy caused only minor HF after 1 year.¹⁵ Cardiotoxicity likely develops with single doses of less than 10 Gy, whereas cumulative doses of 50 to 70 Gy (in fractions of 2, 3, or 4 Gy) cause myocardial

TABLE 14.1
Malignancies whose treatment may include radiation therapy at the outlined doses and generation of a radiation risk to the heart

Malignancy	Dose (Gy)
Hodgkin lymphoma	30–36
Breast cancer	45–50
Gastric carcinoma	45–50
Esophageal carcinoma	45–50
Lung cancer	50–60
Thymoma	60

cytolysis.¹⁶ Pericardial fibrosis and HF occurred earlier when larger fractions were used. In a human autopsy study, significant myocardial fibrosis was observed only in patients that received greater than 30 Gy.³ This being said, in recent years there has been a shift from an exponential model with a “safe” threshold value for radiation dose to a more linear model.

BREAST CANCER

The radiation dose that the heart receives varies depending on the type and location of tumor being treated. As described above, there is a higher risk for cardiac disease after RT for cancer of the left breast when compared with irradiation of the right breast.⁴ This finding is not surprising given the radiation dose the heart receives for

BOX 14.1
Cardiac disease associated with radiation exposure

Pericardial disease
 Pericardial effusion
 Acute pericarditis
 Constrictive pericarditis
 Cardiomyopathy
 Vascular disease
 Coronary artery disease
 Microvascular coronary disease
 Carotid artery disease
 Valvular disease
 Conduction abnormalities
 Bundle branch blocks
 Atrioventricular block

left-sided tumors is more than double that received for right-sided tumors.¹⁷ With irradiation of the left breast, the left anterior descending artery (LAD) is the structure that receives the highest radiation dose.

Changes to contemporary RT regimens for breast cancer have improved cardiac outcomes. Tangential radiation fields rather than anterior fields result in lower cardiac doses,¹⁸ and CT radiation planning can exclude the heart from the treatment field.¹⁹ These changes have produced a steady decline in the laterality of coronary artery disease (CAD) observed with left-sided versus right-sided irradiation since 1979, and laterality was no more seen in a modern cohort study.^{20,21}

Although early randomized controlled trials of RT for breast cancer found a higher risk of ischemic heart disease in the RT than in the surgery-only arm, the Danish Breast Cancer Cooperative Group 82b and 82c trials randomized patients to surgery with or without RT and found no increased risk of ischemic heart disease.^{18,21–23} In these trials, cardiac radiation protection blocks, lower volume of heart irradiated, and RT treatment planning using ultrasound measurement of chest wall thickness were contributing factors to reduced cardiotoxicity. However, a more recent retrospective analysis of women who underwent RT for breast cancer in Sweden and Denmark between 1958 and 2001 revealed a linear relationship between major coronary events and radiation dose (7.4% risk increase per gray) with no obvious threshold. This increase started within the first 5 years after radiotherapy and continued into the third decade. In addition, patients with pre-existing cardiovascular risk factors had a greater absolute risk of death from ischemic heart disease and/or coronary events compared with patients who did not have risk factors.²⁴ Avoidance of internal mammary lymph node irradiation reduces cardiac radiation dose; however, recent trials of internal mammary node irradiation for breast cancer have shown benefits in terms of disease-free survival.^{25,26} At a follow-up time of 10 years, there were no significant increases in cardiac disease; however, longer-term follow-up of these patients is warranted.

HODGKIN DISEASE

Historically, mantle field irradiation (lymph nodes in the neck, mediastinum, and axillae) with 35 to 45 Gy was used for Hodgkin disease (HD).²⁷ The whole heart receives a dose of 27.5 Gy with mantle field RT, and some parts receive greater than 35 Gy.^{28,29} Most cardiovascular deaths in patients

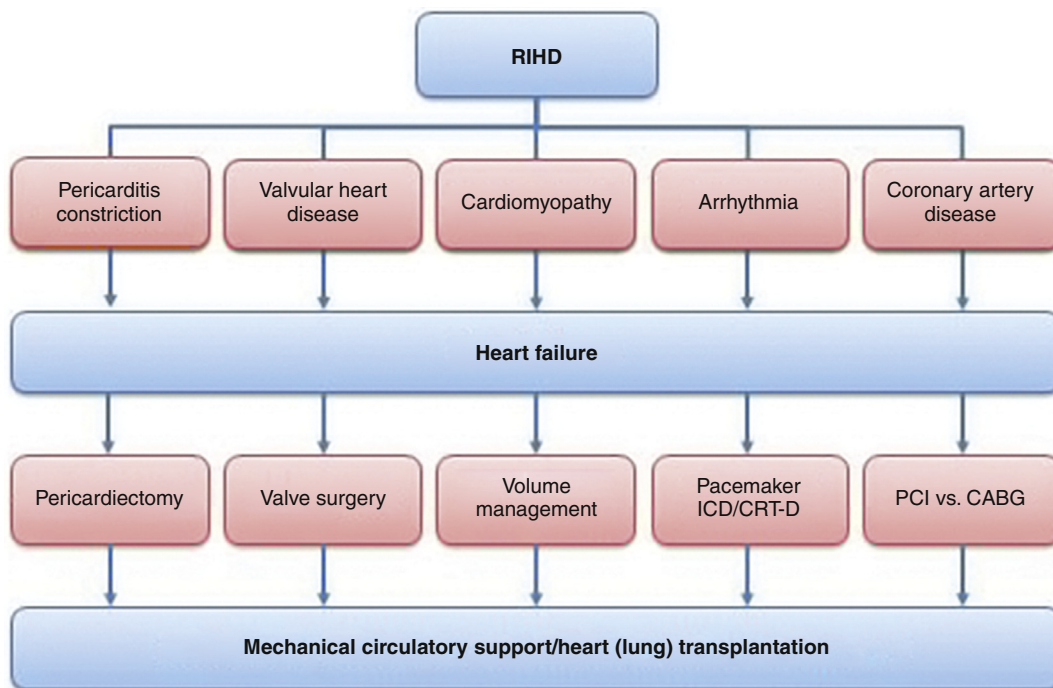


Fig. 14.1 The spectrum of RIHD, common final pathway of presentation with HF, and treatment modalities directed toward the disease aspects. ICD, implantable cardioverter defibrillator.

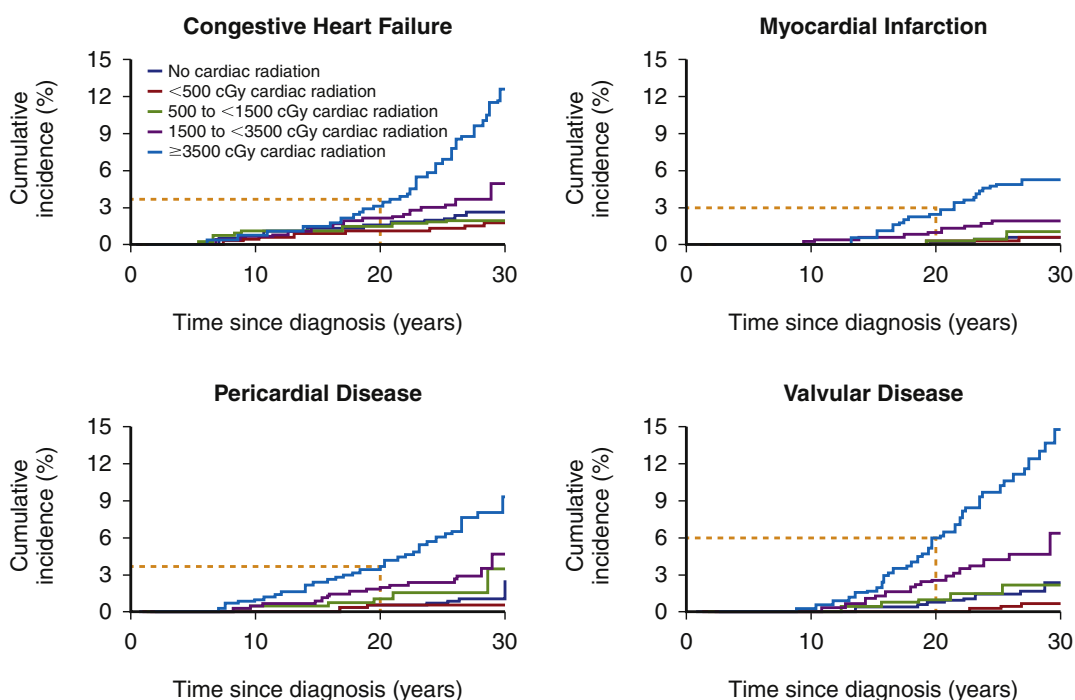


Fig. 14.2 Cumulative incidences of the various aspects of RIHD in childhood cancer survivors. Notice the dose dependency and the timeline of 15 years from diagnosis for clinical appearance. (From Mulrooney DA, Yeazel MW, Kawashima T, et al. Cardiac outcomes in a cohort of adult survivors of childhood and adolescent cancer: retrospective analysis of the Childhood Cancer Survivor Study cohort. *BMJ* 2009;339:b4606; with permission.)

with heart disease occur in those that received greater than 30 Gy.⁷ Acute pericardial effusion following RT occurred in patients who received an average pericardial dose of 53.25 Gy.³⁰ A dose of 2.8 Gy was the lowest dose that has been shown to increase the rate of CAD.³¹

RT for HD has been refined since the 1970s. Radiation protection blocks covering the left ventricle limit the total cardiac dose to 15 Gy, and modern-era regimens have used a reduced fraction size.^{7,32,33} With these interventions, the relative risk for non-acute myocardial infarction-related cardiac death was reduced from 5.3 to 1.4. Involved-node RT and involved-field RT include the involved nodes and their surrounding regions, respectively.^{27,28} These regimens have resulted in further reductions in cardiac radiation dose when compared with extended-field (mantle) radiation.

DOSE FRACTIONATION

Fractionation of total radiation dose is another factor in the development of RIHD, and it is

thought that risk of RIHD is higher with a lower number of fractions.^{31–34} Indeed, twice weekly fractionation compared with 5 times weekly increases the risk of complications in noncardiac tissues such as pulmonary fibrosis and pathologic fractures.^{35,36} Dose plan analysis of hypofractionated RT (larger dose fractions given in fewer treatments) furthermore confirms a lower cardiac radiation dose compared with normofractionated RT.³⁵ However, hypofractionated RT of 42.5 Gy in 16 fractions versus 50 Gy in 25 fractions, which is commonly used for breast cancer, resulted in no differences in cardiovascular mortality after 10 years.^{37,38} Thus, the value of this strategy has yet to be fully defined.

PATHOPHYSIOLOGY OF RADIATION-INDUCED HEART DISEASE

Human autopsy studies have characterized the pathologic findings of RIHD, and pathophysiologic concepts have been described (Fig. 14.3).^{2,3} It is unlikely that age-related CAD or degenerative changes are responsible for the

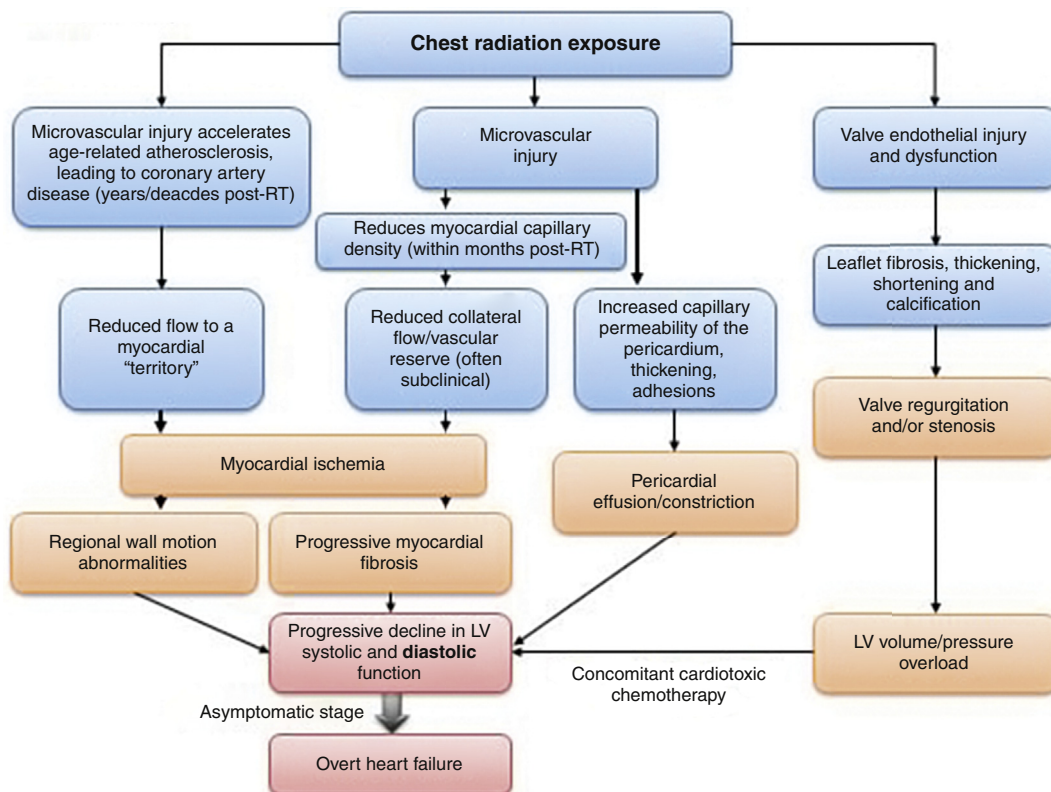


Fig. 14.3 Outline of the pathophysiology of RIHD. (From Lancellotti P, Nkomo VT, Badano LP, et al. Expert consensus for multi-modality imaging evaluation of cardiovascular complications of radiotherapy in adults: a report from the European Association of Cardiovascular Imaging and the American Society of Echocardiography. *Eur Heart J Cardiovasc Imaging* 2013;14(8):723; with permission.)

lesions observed given the young age of many of these patients. Pericardial disease was the most common finding, with 70% to 100% of patients having an abnormal pericardium. Some of the lesions observed include constrictive pericarditis, fibrinous pericardial adhesions, and pericardial fibrosis. Pericardial effusions and thickening with fibrous tissue were seen in most patients. Diffuse fibrosis and calcification were found in each of the 4 valves, and some surgically removed specimens were severely fibrosed and stenotic. Myocardial interstitial fibrosis was also found in most patients, although necrosis of myocardial cells was not observed. Up to a third of autopsies revealed severe CAD (>75% stenosis) attributable to radiation. Although conventional atherosclerosis was often present, fibrous tissue was a dominating feature in essentially all 3 layers of the arterial wall.

Fibrosis becomes the dominant pathologic feature 1 year after radiation, whereas inflammation is the dominant finding early on.^{15,16,39} This also has been attributed to injury of the endothelial layer with subsequent activation and release of cytokines as well as loosening of tight junction and increased permeability. This process is pertinent to the process of acute and constrictive pericarditis but also affects the valves and the capillaries in the myocardium. Cytokines such as tumor necrosis factor- α and transforming growth factor- β have been implicated in increased type I and III collagen deposition and thus fibrosis.⁴⁰⁻⁴³

However, because interstitial fibrosis is often perivascular, some investigators have hypothesized that tissue hypoxia from capillary damage may be the primary insult causing radiation-induced tissue fibrosis.^{15,16,37,42-45} Endothelial damage exposes von Willebrand factor, which stimulates thrombus formation and can occlude myocardial capillaries.^{46,47} The theory that ischemia is a key factor in RIHD is supported by the observation that histopathological changes are most evident in the subendocardium. However, direct radiation injury appears to affect the intercalated discs and mitochondria of myocytes.⁴⁸⁻⁵² Reactive oxygen species are produced by inhibition of mitochondrial respiration, which is associated with radiation-induced myocardial dysfunction.^{41,48-54} The renin-angiotensin-aldosterone system is also activated by this oxidative stress, and angiotensin II is another profibrotic mediator.^{55,56} In addition, studies have suggested that angiotensin-receptor blockers and angiotensin-converting enzyme (ACE) inhibitors can potentially inhibit the development of radiation-induced fibrosis.⁵⁵⁻⁵⁹ Finally, there is also the potential for direct injury of the cardiomyocytes (myocytolysis).¹⁶

Radiation exposure accelerates atherosclerosis by causing direct endothelial injury. Intimal cholesterol plaques may occur rapidly when lysosomal enzymes are activated and endothelial permeability is increased following coronary irradiation.⁶⁰⁻⁶⁵ Furthermore, there is endothelial activation with expression of adhesion molecules and release of von Willebrand factor.^{46,66-69} These processes favor inflammation, plaque progression, and vulnerability as well as thrombosis.^{70,71} A unique observation is the presence of fibrotic changes of all 3 layers of the epicardial coronary arteries.^{2,3} However, changes of the microvasculature are also observed after chest irradiation.^{72,73}

Structural alterations of the valves seem to be stimulated by conversion of interstitial cells into an osteoblast-like cell.^{74,75} In addition, multiple osteogenic proteins, including osteopontin and bone morphogenetic protein 2, are upregulated and likely play a role in the development of calcific aortic stenosis following cardiac irradiation.

PERICARDIAL DISEASE

Radiation-induced pericardial disease ranges from acute pericarditis and pericardial effusions to constrictive pericarditis. Historically, with older, more radiation-intense protocols, pericardial disease was one of the most frequent cardiac complications of RT.^{76,77} Pericardial effusions with cardiac tamponade were among the first case reports of RIHD following thoracic radiation. Acute pericarditis presenting with chest pain and friction rubs was also reported.^{77,78} Management of these cases does not differ from management of acute pericarditis and includes nonsteroidal anti-inflammatory drugs.

Although pericardial disease-related sequelae is less frequently encountered nowadays due to changes in radiation exposure and techniques, patients may also develop chronic pericardial effusions and/or constrictive pericarditis due to evolving adhesions and fibrosis anywhere from 1 to 20 years following irradiation.^{3,77-85} Patients may complain of shortness of breath, increased girth size, lower extremity swelling, and lightheadedness to the point of presyncope and syncope. The physical examination findings include jugular venous distention, Kussmaul sign, ascites, and peripheral edema. Electrocardiogram findings are nonspecific but include low-voltage and T-wave changes. Although echocardiography, CT, or MRI scans may reveal pericardial thickening, these findings can be nonspecific, and cardiac catheterization to evaluate for ventricular discordance and interdependence may aid in the diagnosis.⁸⁶

Pericardiocentesis is sometimes needed for large effusions and pericardial stripping (pericardectomy) for hemodynamically and clinically relevant constriction.^{77,86,87} Mortality following pericardial stripping is significantly higher in radiation-induced constrictive pericarditis compared with pericardectomy performed for other causes (5-year mortality 89.0% vs 35.7%, $P < .001$; **Fig. 14.4**).^{86,87} The likely reason for higher mortality rates in this population is due to more extensive pericardial and mediastinal fibrosis as well as fibrosis of the myocardium, and concomitant valvular and ischemic heart disease. Once diagnosed, pericardectomy should be done sooner rather than later but may only expose the presence of restrictive cardiomyopathy.⁸⁶ A thorough preoperative evaluation is therefore needed to determine the value of surgery as is experience with managing these cases in general for best overall outcomes.

CARDIOMYOPATHY

The clinical presentation of radiation-induced myocardial disease is similar to HF of other causes.⁸⁸ MRI may show diffuse and patchy fibrosis that does not correspond to a coronary artery perfusion territory. Left ventricular ejection fraction (LVEF), on average, may still be within the normal range but lower than expected in comparison with healthy controls (62%, $P < .05$).⁸⁹ The impairment in cardiac function can be more profoundly impaired in patients who also received anthracycline treatment, even when there is temporal separation between these treatment modalities (**Fig. 14.5**).^{90–92} The most distinctive feature is the development of restrictive cardiomyopathy as a consequence of endocardial and myocardial fibrosis.^{93,94}

As with HF not caused by radiation exposure, ACE inhibitors and β -blockers are the mainstays

of therapy.⁹⁵ Orthotopic heart transplantation (OHT) is the last resort in cases that are refractory to medical therapy. It may also be preferred to pericardectomy given the technical difficulties of pericardial stripping in the presence of severe mediastinal fibrosis.^{96,97} OHT may also be the only remaining option in the case of diffuse CAD not amendable to coronary artery bypass surgery (CABG), which can similarly be challenged in its technical aspects by mediastinal fibrosis. In the RHD population, OHT may also carry a significant perioperative risk, although at least one center has reported excellent short- and intermediate-term results in a small cohort of patients.^{96,97} Patients should be carefully selected for OHT given the significant perioperative risk.

VALVULAR DISEASE

Most patients develop clinically relevant valvular disease 20 years or more after mediastinal radiation (on average 22 years to symptom development).⁹⁸ A cardiac radiation dose of greater than 25 Gy carries the highest risk for radiation-induced valvular disease,^{99–102} and in general, the aortic and mitral valves are the most commonly affected valves. Regurgitation is more common than stenosis (aortic regurgitation in 60%, mitral regurgitation in 52%, and aortic stenosis in 16% in one series).^{3,11,98,103,104}

Surgical management is the standard of care for radiation-induced valvular disease.¹⁰³ The 30-day mortality after valvular surgery for radiation-induced valvular disease (including aortic, mitral, and tricuspid valves) is 12%, whereas the 5-year survival is 66%.^{105,106} Constrictive pericarditis significantly raises the 30-day mortality to 40%.^{102,105–107} It might be because of a direct role, or more likely, constrictive pericarditis serves as an indicator of higher

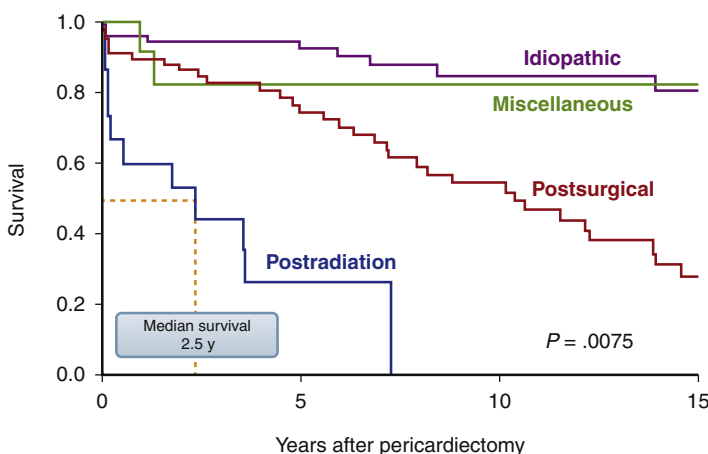


Fig. 14.4 Survival after pericardectomy by type of pericardial disease. (Adapted from Bertog SC, Thambidorai SK, Parakh K, et al. Constrictive pericarditis: etiology and cause-specific survival after pericardectomy. *J Am Coll Cardiol* 2004;43(8):1448; with permission.)

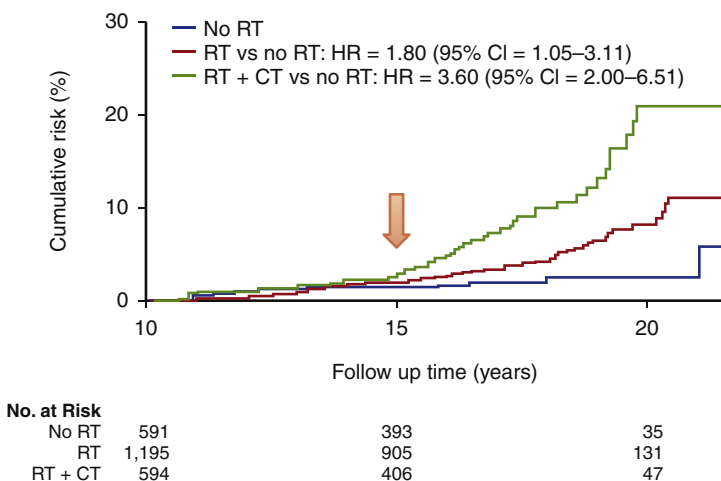


Fig. 14.5 Cumulative incidences of HF in patients with breast cancer. Notice the more than synergistic impact of chemotherapy (mainly anthracyclines) and the emergence of differences after 15 years. (From Hooning MJ, Botma A, Aleman BM, et al. Long-term risk of cardiovascular disease in 10-year survivors of breast cancer. *J Natl Cancer Inst* 2007;99(5):370; with permission.)

radiation dose exposure and greater burden of cardiac and mediastinal disease. In patients with advanced aortic stenosis who are poor surgical candidates due to comorbidities such as radiation pulmonary fibrosis and severe aortic calcifications (ie, porcelain aorta), transcatheter aortic valve replacement (TAVR) may be a less invasive option.¹⁰⁸ Intervention for radiation-induced valvular disease should be individually tailored to the valve involved and the patient's other comorbidities.

CORONARY ARTERY DISEASE

Irradiation of the coronary arteries rapidly accelerates atherosclerosis. CAD is the most common clinically significant manifestation of RIHD, with acute myocardial infarctions occurring even in young patients without traditional cardiac risk factors (see Fig. 14.3).^{11,77,109} The distribution of CAD reflects the radiation field.¹¹⁰ Accordingly, the mid to distal segments of the LAD are the most likely areas to be involved with left-breast irradiation.¹¹¹ On the contrary, ostial right and left main lesions have classically been reported with mediastinal, mantle, or involved field radiation. A third of patients screened with coronary angiography will also have 2- or 3-vessel disease with stenoses 70% or greater.¹¹²⁻¹¹⁴ Concerns for aggravation of in-stent restenoses after thoracic radiotherapy have been raised but not always confirmed.¹¹⁵⁻¹¹⁷

Radiation-induced CAD typically presents clinically with angina or myocardial infarction, just like conventional CAD.^{113,118} The diagnostic workup is in keeping with published guidelines, and coronary angiography remains the reference standard.^{109,113} Consideration has to be given to

the presence of microvascular disease, ideally assessed by regional myocardial perfusion imaging with PET or invasive measures of coronary flow reserve and vasoreactivity. Under these circumstances, technetium-99m tetrofosmin perfusion may show reversible perfusion defects that do not correspond to coronary artery distribution territories but microvascular dysfunction.^{119,120} Stress echocardiography is generally not as sensitive but more specific for regional perfusion defects, which may not be present with microvascular disease. Computed tomography angiography (CTA) with or without coronary artery calcium (CAC) scoring is an alternative imaging technique. The prevalence of coronary calcium in patients who received RT for Hodgkin disease is overall higher, and the overall plaque burden is more quantifiable; however, no systematic studies have yet been performed.¹²¹⁻¹²³ In one of the most comprehensive studies thus far, conventional functional stress testing underestimated the burden of CAD in these patients (Fig. 14.6).

Guidelines for management of stable CAD and acute coronary syndromes do not specifically address RIHD; however, it is reasonable to follow the existing recommendations for conventional CAD.^{124,125} Either percutaneous coronary intervention (PCI) or CABG may be considered for complex, multivessel CAD, although if valve surgery or pericardiectomy is needed, then CABG may be done concurrently to avoid reoperation.^{126,127} The internal mammary artery (IMA) is in the radiation field of some RT regimens, and there have been concerns that it may be potentially a dysfunctional conduit.¹²⁸ The IMA, however, was found to be free of radiation-induced injury in one study of

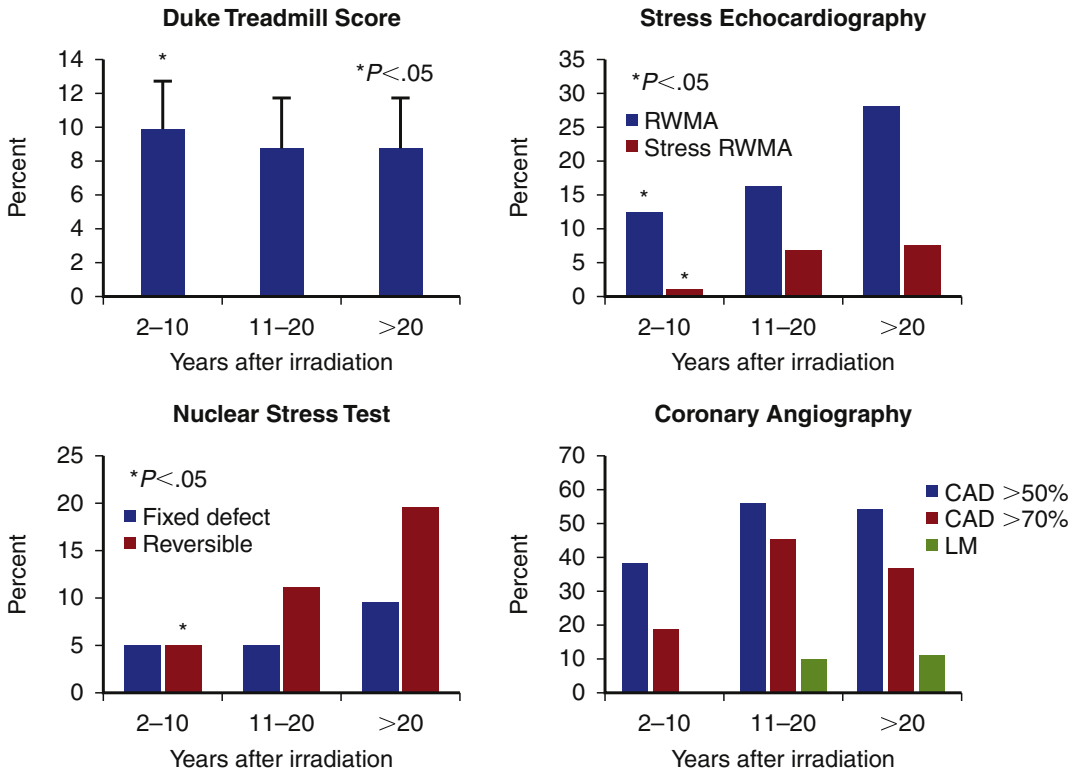


Fig. 14.6 Prevalence of stress test and coronary angiography findings in patients who received mediastinal RT (≥ 35 Gy) for Hodgkin lymphoma. LM, left main coronary artery; RWMA, regional wall motion abnormalities. (Data from Heidenreich PA, Schnittger I, Strauss W, et al. Screening for coronary artery disease after mediastinal irradiation. *J Clin Oncol* 2007;25:43-9.)

125 patients who had received thoracic RT¹²⁹; thus, no definitive conclusions can be made about IMA graft patency in the setting of mediastinal radiation. It may, however, be prudent to perform angiography on any potential mammary grafts to exclude pre-existing disease before surgery. In general, PCI and CABG are both reasonable options for the management of severe radiation-induced CAD, but the final decision is case based.^{130,131}

NONCORONARY ATHEROSCLEROTIC DISEASE

In addition to CAD, atherosclerosis affects the carotid and subclavian arteries following thoracic radiation as well.¹¹ Stenosis of 40% or greater of the carotid or subclavian artery was observed in 7.4% of patients with prior RT for Hodgkin disease at a median of 17 years after treatment. The median age of patients at the time of radiotherapy was 34 years, and the median time from treatment to diagnosis of carotid or subclavian arterial disease was 17 years. Patients who developed subclavian stenosis were exposed to a higher

median low-cervical radiation dose than those who did not (44 vs 36 Gy, $P = .002$).

RT for head and neck tumors also increases the risk of carotid artery stenosis. Patients who had received a mean radiation dose of 56.4 Gy to the neck for nasopharyngeal carcinoma had a prevalence of carotid stenosis of 79% compared with 21% in controls.¹³² Ten years after RT to the neck, the relative risk of stroke was 10.1 (95% CI 4.4-20.0).

Carotid endarterectomy and carotid artery stenting are options for severe carotid artery stenosis, and stenting of the subclavian artery or bypass subclavian artery bypass grafting are options for subclavian artery stenosis.

ELECTROPHYSIOLOGIC ABNORMALITIES

Cardiac irradiation may cause damage to the conduction system, such as atrioventricular (AV) block and bundle branch blocks.^{98,133} Although most patients are asymptomatic, the most common clinical presentation reported in the literature is syncope. In one study of patients who presented with complete heart block, the average latency

period from irradiation to clinical presentation was 12 years. Ostial stenosis of the right coronary artery (RCA) from radiation exposure has been reported to cause AV block from exercise-induced AV nodal ischemia.^{134,135} Radiation-induced fibrosis may also disrupt the conduction system.^{136,137} Calcifications of the mitral-aortic junction are a peculiar sign to note on imaging studies as associated with complete heart block in these patients (Fig. 14.7). Patients with high-degree AV blocks may require pacemakers.^{133,134} Treatment with anthracyclines in addition to RT may increase the risk of developing supraventricular tachycardia and ventricular tachycardia.¹³⁸

AUTONOMIC DYSFUNCTION

Patients treated with thoracic RT may also develop autonomic dysfunction, likely due to the disruption in the parasympathetic and sympathetic regulatory mechanisms. In fact, in Hodgkin lymphoma survivors after mediastinal RT, autonomic dysfunction ranks second after electrocardiogram (ECG) abnormalities as one of the most common abnormalities (Fig. 14.8). A more recent retrospective study of 263 patients with Hodgkin lymphoma evaluated the resting heart rates and heart rate recovery before and during exercise treadmill testing. Compared with control patients, patients that had received RT a median of

19 years prior (median radiation dose 38 Gy) had an elevated resting heart rate.¹³⁹ In addition, after 1 minute of recovery from Bruce protocol, a significantly greater percentage of RT patients had an abnormal heart rate recovery (31.9% vs 9.3%, $P < .0001$). An abnormal heart rate recovery was associated with higher all-cause mortality (HR 4.6, 95% CI 1.6–13.0), as has previously been described in patients without radiation history or known heart disease.¹⁴⁰ The authors of this study hypothesized that radiation injury to the autonomic nervous system is disruptive of the sympathovagal balance.

SCREENING AND PREVENTION

Although modern RT has become more sophisticated and results in lower radiation doses, patients are also living longer after treatment of cancer, increasing the likelihood of developing clinically significant RIHD. Prevention of radiation exposure by excluding the heart from the radiation field with radiation planning or use of radiation protection blocks (shielding) is the primary method of preventing RIHD.

There is a dearth of literature regarding prevention of RIHD during or after radiation exposure. Animal studies have demonstrated a cardioprotective effect of ACE inhibitors and angiotensin-receptor blockers after irradiation,

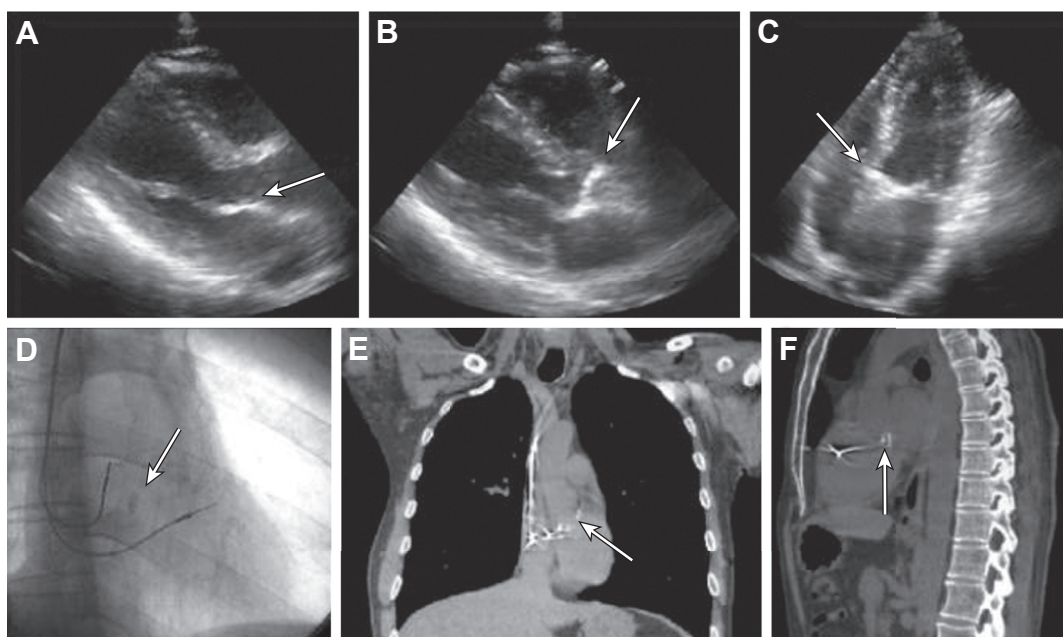


Fig. 14.7 Calcification of mitral-aortic junction. (From Santoro F, Ieva R, Lupo P, et al. Late calcification of the mitral-aortic junction (arrows) causing transient complete atrio-ventricular block after mediastinal radiation of Hodgkin lymphoma: multimodal visualization. *Int J Cardiol* 2012;155:e50; with permission.)

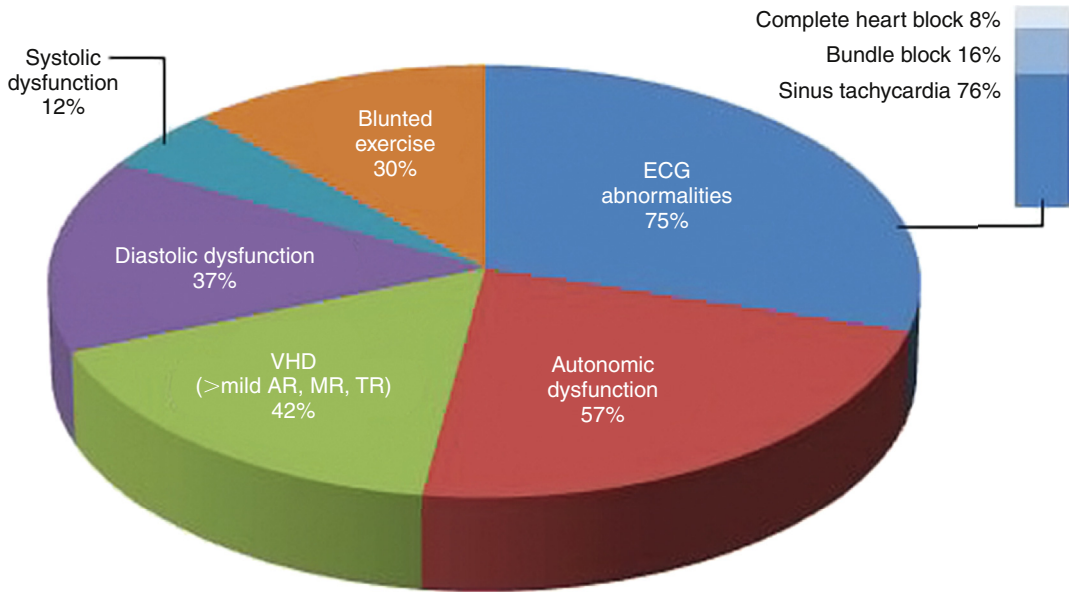


Fig. 14.8 Prevalence of abnormalities and cardiac disease on average 14 years (range 6–27.5 years) after diagnosis in survivors of Hodgkin lymphoma who underwent mediastinal radiation. AR, aortic regurgitation; MR, mitral regurgitation; TR, tricuspid regurgitation; VHD, valvular heart disease. (Data from Adams MJ, Lipsitz SR, Colan SD, et al. Cardiovascular status in long-term survivors of Hodgkin's disease treated with chest radiotherapy. *J Clin Oncol* 2004;22(15):3139–48.)

and patients who are on ACE-inhibitors are at lower risk of radiation pneumonitis.^{141–144} HMG-CoA reductase inhibitors (statin drugs) also decrease the degree of cardiac fibrosis due to radiation exposure.¹⁴⁵ Statin therapy should be considered in patients undergoing thoracic RT. Similarly, if patients undergoing RT require antihypertensive treatment, ACE inhibitors or angiotensin receptor blockers (ARBs) should be considered the initial agents. Prospective studies in humans though are needed to confirm the benefits of statins and ACE inhibitors/ARBs in patients with possible cardiac radiation exposure.

Patients with a history of thoracic radiation treatment should be followed by a cardiologist lifelong. This includes asymptomatic patients given that even those without symptoms may have significant cardiovascular disease. The value of brain natriuretic peptide and troponin I is unknown,¹⁴⁶ and the emphasis has been on imaging studies, as endorsed in the European Association of Cardiovascular Imaging and American Society of Echocardiography 2013 consensus statement on follow-up screening after RT.¹⁴⁷ Screening echocardiography is recommended starting 10 years after radiation exposure, or 5 years after RT in higher-risk patients (Box 14.2).^{98,147,148} Echocardiograms are then to be repeated every 5 years. Likewise, functional stress tests are recommended 5 to 10 years after RT in high-risk patients to screen for CAD.¹⁴⁸ Other

investigators recommend CAD screening following mediastinal RT >35 Gy.¹⁴⁷ The Society for Cardiac Angiography and Intervention (SCAI) recently further refined screening recommendations after RT as summarized in Fig. 14.9 (see Box 14.2).¹⁴⁹ The SCAI consensus document specifically mentions the use of computerized tomography coronary angiography (CCTA) with CAC scoring and exercise oxygen consumption stress testing with echocardiographic imaging as additional screening techniques. Although CCTA outlines the anatomic burden of CAD more than any other technique, exercise oxygen consumption stress testing evaluates both the cardiac and the pulmonary reserve, which may also be impaired because of concomitant lung fibrosis in these patients. If abnormalities are found on CT or functional stress testing, coronary angiography may be considered. Screening for and treatment of traditional CAD risk factors, including hypertension, dyslipidemia, diabetes, and smoking, are imperative.^{91,150} Indeed, RT may be considered as yet another potent cardiovascular risk factor (Fig. 14.10), and for instance, the risk of acute coronary events is higher and emerges earlier (<10 years, and even <5 years) in those with other cardiovascular risk factors²⁴ (Fig. 14.11). These observations provide another strong impetus for screening efforts. Even though intuitive and extrapolated from studies on conventional atherosclerotic cardiovascular disease, evidence

BOX 14.2**Screening recommendations for asymptomatic patients with cardiac radiation exposure***Screening for CAD*

van Leeuwen-Segarceanu et al

CT angiography/coronary artery calcium scoring

Screening recommended for patients receiving ≥ 35 Gy to the mediastinum (or those who received older RT techniques that do not minimize cardiac irradiation)

Starting 5 years after radiation exposure for patients 45 or older

Starting 10 years after radiation exposure for patients less than 45

Reassess every 5 years

Lipid panel every 3 years

Blood pressure and fasting blood glucose screening annually

European Association of Cardiovascular Imaging and the American Society of Echocardiography (EACVI/ASE) consensus statement

Functional noninvasive stress test

Screening recommended in high-risk patients^a

Starting 5 to 10 years after radiation exposure

Reassess every 5 years

Screening for valvular disease

van Leeuwen-Segarceanu et al

Echocardiogram

Screening recommended for patients receiving 35 Gy or greater to the mediastinum (or those who received older RT techniques that do not minimize cardiac irradiation)

Starting 10 years after radiation

Reassess every 5 years

EACVI/ASE consensus statement

Echocardiogram

Starting 5 years after radiation in high-risk patients^a

Starting 10 years after radiation in all others

Reassess every 5 years

Screening for noncoronary atherosclerotic disease

Both van Leeuwen-Segarceanu et al and the EACVI/ASE consensus statement do not recommend screening for noncoronary atherosclerotic disease in asymptomatic patients, but recommend carotid artery ultrasonography in patients with carotid bruits or neurologic symptoms. However, given the significant elevation in risk of stroke related to carotid stenosis in patients who have received head and neck radiotherapy, screening with ultrasonography in select asymptomatic patients is reasonable.

^a High-risk patients were defined as having had anterior or left chest irradiation as well as one of the following risk factors: dose greater than 30 Gy, dose fraction greater than 2 Gy, age less than 50 years, lack of shielding, concomitant anthracyclines, cardiovascular risk factors, or known cardiac disease.

Data from Nellesen U, Zingel M, Hecker H, et al. Effects of radiation therapy on myocardial cell integrity and pump function: which role for cardiac biomarkers? *Chemotherapy* 2010;56:147–52; and Lancellotti P, Nkomo VT, Badano LP, et al. Expert consensus for multi-modality imaging evaluation of cardiovascular complications of radiotherapy in adults: a report from the European Association of Cardiovascular Imaging and the American Society of Echocardiography. *J Am Soc Echocardiogr* 2013;26:1013–32.

is yet to be provided that this knowledge and reaction to this knowledge yield improved cardiovascular outcomes in patients who underwent RT. Until this proof is provided, all patients may be considered to be at higher risk in the

respective radiation territories than captured by conventional risk calculators and should be proactively managed with aspirin and statins. Experimental studies indicate that these medications may not be as efficacious for radiation-induced

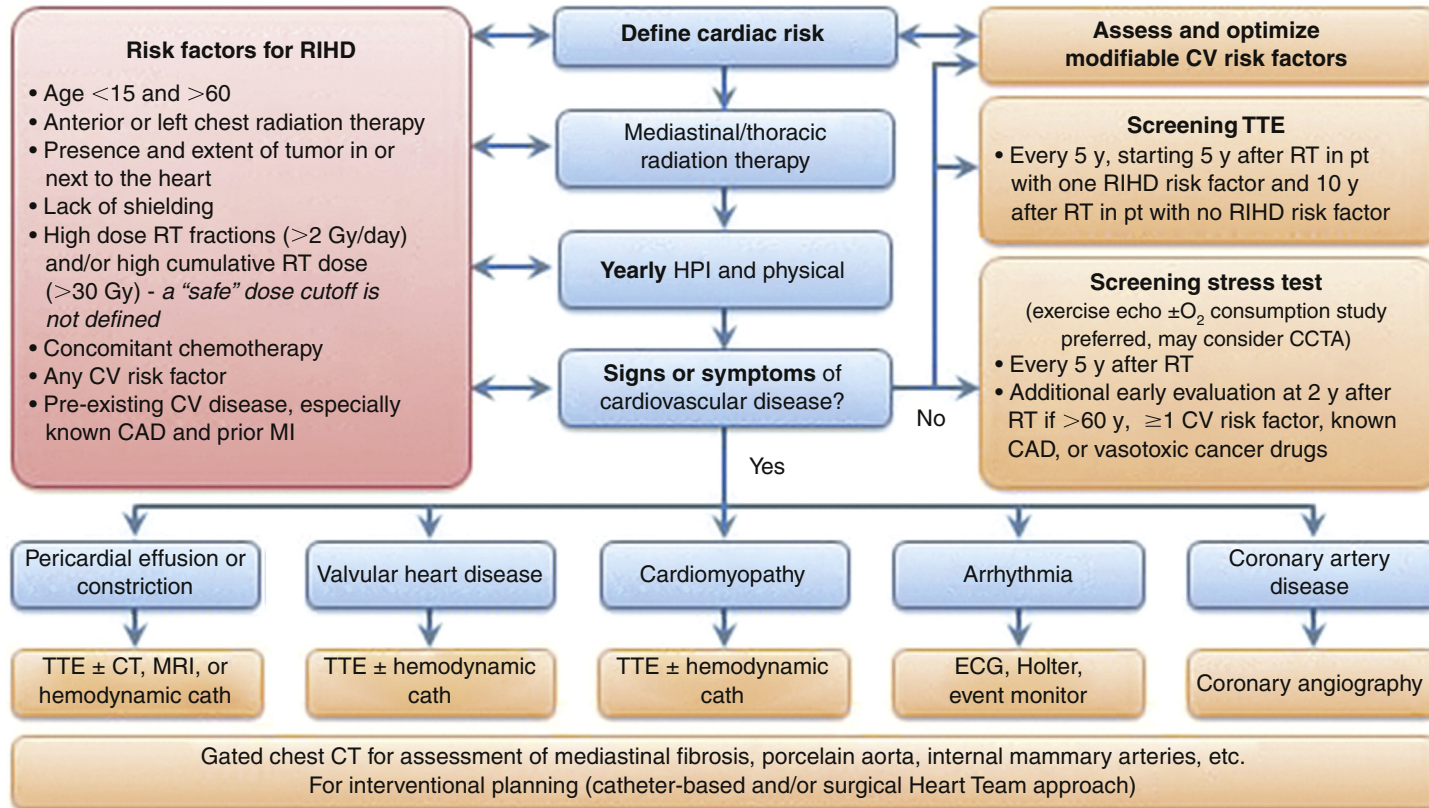


Fig. 14.9 SCAI algorithm for the management of patients undergoing chest RT. (From Iliescu CA, Grines CL, Herrmann J, et al. SCAI expert consensus statement: evaluation, management, and special considerations of cardio-oncology patients in the cardiac catheterization laboratory (endorsed by the Cardiological Society of India, and Sociedad Latino Americana de Cardiologia Intervencionista). Catheter Cardiovasc Interv 2016;87(5):E206; with permission.)

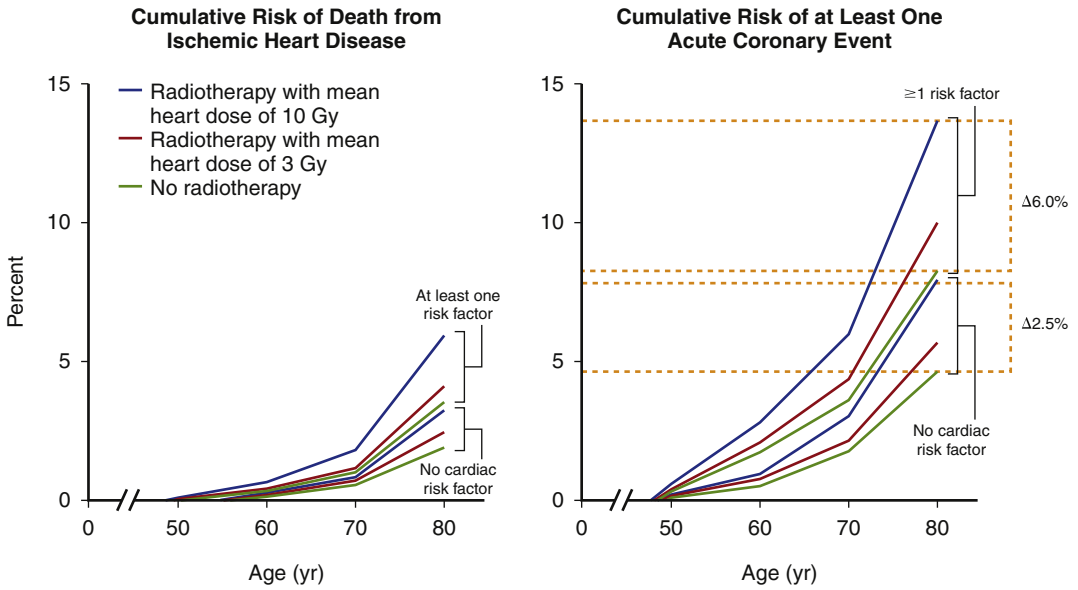


Fig. 14.10 Cumulative risk of death from ischemic heart disease (left) and of an acute coronary event (right) in patients after chest radiation for breast cancer. (From Darby SC, Ewertz M, McGale P, et al. Risk of ischemic heart disease in women after radiotherapy for breast cancer. *N Engl J Med* 2013;368:997; with permission.)

vascular injury, but there is no substance to these concerns in patients yet.

With regards to the other manifestations for RIHD, there are currently no known strategies that would prevent their development or progression after radiation-induced injury.

SUMMARY

RT is a highly prevalent cause of cardiovascular disease in survivors of breast cancer and Hodgkin disease. CAD, cardiomyopathy, and valvular disease have a high prevalence, so it is recommended that patients with significant prior radiation

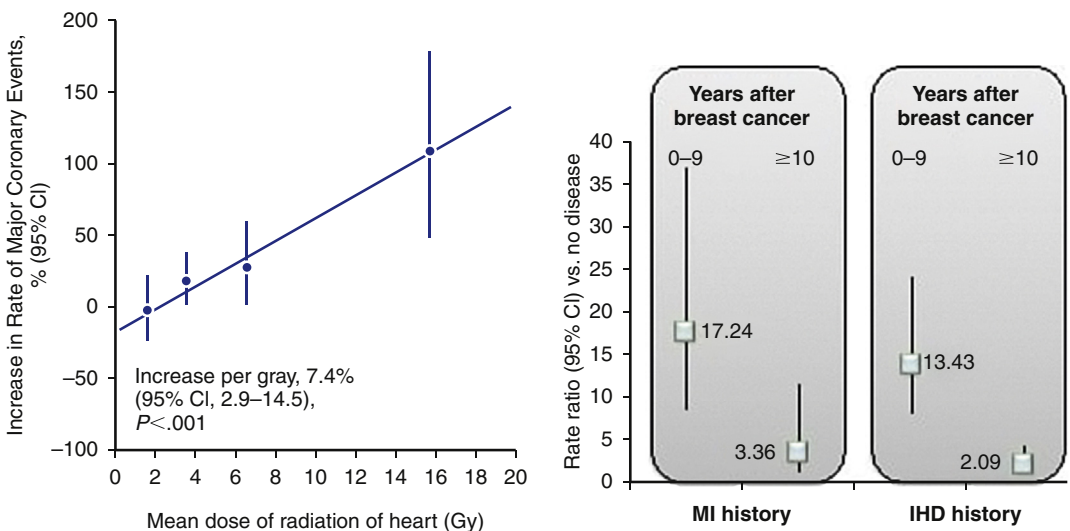


Fig. 14.11 Incidence of major coronary event as a function of radiation dose to the heart (left) and the relative risk by time from chest radiation for breast cancer (right). MI, myocardial infarction. (From Darby SC, Ewertz M, McGale P, et al. Risk of ischemic heart disease in women after radiotherapy for breast cancer. *N Engl J Med* 2013;368:993; with permission.)

TABLE 14.2
Commonly used units of radiation exposure

Unit	Type of Unit	Conversion Factor
Rad ^a	Absorbed radiation dose	1 rad = 0.01 Gy
Gray (Gy) ^a	Absorbed radiation dose; SI unit	1 J/kg = 1 Gy = 100 rad
Rem ^b	Dose equivalent	1 rem = 0.01 Sv; 1 rem = 1 rad ^c
Sievert (Sv) ^b	Dose equivalent; SI unit	1 Sv = 100 rem; 1 Sv = 1 Gy ^c

^a Rad and grays are units of energy per mass.

^b Rem and sieverts are units of energy per mass adjusted by a dimensionless factor to account for potential for biological damage.

^c Rem and rad are equivalent and sieverts and grays are equivalent for radiograph and gamma radiation.

Data from Topolnjak R, Borst GR, Nijkamp J, et al. Image-guided radiotherapy for left-sided breast cancer patients: geometrical uncertainty of the heart. *Int J Radiat Oncol Biol Phys* 2012;82:e647–55.

exposure be followed by a cardiologist lifelong (Case Studies 1-4, available on Expert Consult, Table 14.2). Screening for RIHD with echocardiograms and for accelerated CAD with either functional stress testing or CT coronary angiography is warranted. Advances continue to be made in reducing cardiac radiation exposure with RT, and with these refinements the incidence of RIHD may decline.

SUPPLEMENTARY MATERIAL

Go to ExpertConsult.com to listen to an interview with the authors.

REFERENCES

1. Finch W, Shamsa K, Lee MS. Cardiovascular complications of radiation exposure. *Rev Cardiovasc Med* 2014;15:232–44.
2. Brosius FC, Waller BF, Roberts WC. Radiation heart disease: analysis of 16 young (aged 15 to 33 years) necropsy patients who received over 3,500 rads to the heart. *Am J Med* 1981;70:519–30.
3. Veinot JP, Edwards WD. Pathology of radiation-induced heart disease: a surgical and autopsy study of 27 cases. *Hum Pathol* 1996;27:766–73.
4. Darby SC, McGale P, Taylor CW, et al. Long-term mortality from heart disease and lung cancer after radiotherapy for early breast cancer: prospective cohort study of about 300,000 women in US SEER cancer registries. *Lancet Oncol* 2005;6:557–65.
5. Favourable and unfavourable effects on long-term survival of radiotherapy for early breast cancer: an overview of the randomised trials. Early Breast Cancer Trialists' Collaborative Group. *Lancet* 2000;355:1757–70.
6. Cuzick J, Stewart H, Rutqvist L, et al. Cause-specific mortality in long-term survivors of breast cancer who participated in trials of radiotherapy. *J Clin Oncol* 1994;12:447–53.
7. Hoppe RT. Hodgkin's disease: complications of therapy and excess mortality. *Ann Oncol* 1997;8: S115–8.
8. Mauch PM, Kalish LA, Marcus KC, et al. Long-term survival in Hodgkin's disease relative impact of mortality, second tumors, infection, and cardiovascular disease. *Cancer J Sci Am* 1995;1: 33–42.
9. Piovaccari G, Ferretti RM, Prati F, et al. Cardiac disease after irradiation for Hodgkin's disease: incidence in 108 patients with long follow-up. *Int J Cardiol* 1995;49:39–43.
10. Applefeld MM, Wiernik PH. Cardiac disease after radiation therapy for Hodgkin's disease: analysis of 48 patients. *Am J Cardiol* 1983;51: 1679–81.
11. Hull MC, Morris CG, Pepine CJ, et al. Valvular dysfunction and carotid, subclavian, and coronary artery disease in survivors of Hodgkin lymphoma treated with radiation therapy. *JAMA* 2003;290: 2831–7.
12. Van Nimwegen FA, Schaapveld M, Janus CP, et al. Cardiovascular disease after Hodgkin lymphoma treatment. *JAMA Intern Med* 2015;75: 1007–17.
13. Davies HE, Wathen CG, Gleeson FV. Risks of exposure to radiological imaging and how to minimise them. *BMJ* 2011;342:589–93.
14. Brenner DJ, Hall EJ. Computed tomography—an increasing source of radiation exposure. *N Engl J Med* 2007;357:2277–84.
15. Lauk S, Kizsel Z, Buschmann J, et al. Radiation-induced heart disease in rats. *Int J Radiat Oncol Biol Phys* 1985;11:801–8.
16. Gillette SM, Gillette EL, Shida T, et al. Late radiation response of canine mediastinal tissues. *Radiation Oncol* 1992;23:41–52.
17. Taylor CW, Nisbet A, McGale P, et al. Cardiac exposures in breast cancer radiotherapy: 1950s–1990s. *Int J Radiat Oncol Biol Phys* 2007;69: 1484–95.

18. Rutqvist LE, Lax I, Fornander T, et al. Cardiovascular mortality in a randomized trial of adjuvant radiation therapy versus surgery alone in primary breast cancer. *Int J Radiat Oncol Biol Phys* 1992; 22:887–96.
19. Buchholz TA. Radiation therapy for early-stage breast cancer after breast-conserving surgery. *N Engl J Med* 2009;360:63–70.
20. Giordano SH, Kuo YF, Freeman JL, et al. Risk of cardiac death after adjuvant radiotherapy for breast cancer. *J Natl Cancer Inst* 2005;97:419–24.
21. Host H, Brennhovd IO, Loeb M. Postoperative radiotherapy in breast cancer—long-term results from the Oslo study. *Int J Radiat Oncol Biol Phys* 1986;12:727–32.
22. Overgaard M, Hansen PS, Overgaard J, et al. Postoperative radiotherapy in high-risk premenopausal women with breast cancer who receive adjuvant chemotherapy. *N Engl J Med* 1997;337: 949–55.
23. Hojris I, Overgaard M, Christensen JJ, et al. Morbidity and mortality of ischaemic heart disease in high-risk breast-cancer patients after adjuvant postmastectomy systemic treatment with or without radiotherapy: analysis of DBCG 82b and 82c randomised trials. *Lancet* 1999;354:1425–30.
24. Darby SC, Ewertz M, McGale P, et al. Risk of ischemic heart disease in women after radiotherapy for breast cancer. *N Engl J Med* 2013; 368:987–98.
25. Poortmans PM, Collette S, Kirkove C, et al. Internal mammary and medial supraclavicular irradiation in breast cancer. *N Engl J Med* 2015;373:317–27.
26. Whelan TJ, Olivetto IA, Parulekar WP, et al. Regional nodal irradiation in early-stage breast cancer. *N Engl J Med* 2015;373:307–16.
27. Hodgson DC. Late effects in the era of modern therapy for Hodgkin lymphoma. *Hematology Am Soc Hematol Educ Program* 2011;2011:323–9.
28. Maraldo MV, Brodin NP, Vogelius IR, et al. Risk of developing cardiovascular disease after involved node radiotherapy versus mantle field for Hodgkin lymphoma. *Int J Radiat Oncol Biol Phys* 2012;83: 1232–7.
29. Glanzmann C, Huguenin P, Lutolf UM, et al. Cardiac lesions after mediastinal irradiation for Hodgkin's disease. *Radiother Oncol* 1994;30:43–54.
30. Byhardt R, Brace K, Ruckdeschel J, et al. Dose and treatment factors in radiation-related pericardial effusion associated with the mantle technique for Hodgkin's disease. *Cancer* 1975;35:795–802.
31. Carr ZA, Land CE, Kleinerman RA, et al. Coronary heart disease after radiotherapy for peptic ulcer disease. *Int J Radiat Oncol Biol Phys* 2005;61: 842–50.
32. Hancock SL, Tucker MA, Hoppe RT. Factors affecting late mortality from heart disease after treatment of Hodgkin's disease. *JAMA* 1993;270: 1949–55.
33. Lauk S, Ruth S, Trott KR. The effects of dose-fractionation on radiation-induced heart disease in rats. *Radiother Oncol* 1987;8:363–7.
34. Schultz-Hector S, Sund M, Thames HD. Fractionation response and repair kinetics of radiation-induced heart failure in the rat. *Radiother Oncol* 1992;23:33–40.
35. Cosset JM, Henry-Amar M, Girinski T, et al. Late toxicity of radiotherapy in Hodgkin's disease: the role of fraction size. *Acta Oncol* 1988;27:123–9.
36. Overgaard M, Bentzen SM, Christensen JJ, et al. The value of the NSD formula in equation of acute and late radiation complications in normal tissue following 2 and 5 fractions per week in breast cancer patients treated with postmastectomy irradiation. *Radiother Oncol* 1987;9:1–11.
37. Appelt AL, Vogelius IR, Bentzen SM. Modern hypofractionation schedules for tangential whole breast irradiation decrease the fraction size-corrected dose to the heart. *Clin Oncol* 2012. <http://dx.doi.org/10.1016/j.clon.2012.07.012>.
38. Whelan TJ, Pignol JP, Levine MN, et al. Long-term results of hypofractionated radiation therapy for breast cancer. *N Engl J Med* 2010;362: 513–20.
39. McChesney SL, Gillette EL, Powers BE. Radiation-induced cardiomyopathy in the dog. *Radiat Res* 1988;113:120–32.
40. Chello M, Mastroroberto P, Romano R, et al. Changes in the proportion of types I and III collagen in the left ventricular wall of patients with post-irradiative pericarditis. *Cardiovasc Surg* 1996;4:222–6.
41. Kruse J, Zurcher C, Strootman EG, et al. Structural changes in the auricles of the rat heart after local ionizing irradiation. *Radiother Oncol* 2001;58: 303–11.
42. Rodemann HP, Bamberg M. Cellular basis of radiation-induced fibrosis. *Radiother Oncol* 1995; 35:83–90.
43. Boerma M, Bart CI, Wondergem J. Effects of ionizing radiation on gene expression in cultured rat heart cells. *Int J Radiat Biol* 2002;78:219–25.
44. Fajardo LF, Stewart JR. Capillary injury preceding radiation-induced myocardial fibrosis. *Radiology* 1971;101:429–33.
45. Paris F, Fuks Z, Kang A, et al. Endothelial apoptosis as the primary lesion initiating intestinal radiation damage in mice. *Science* 2001;293:293–7.
46. Boerma M, Kruse J, van Loenen MM, et al. Increased deposition of von Willebrand factor in the rat heart after local ionizing irradiation. *Strahlenther Onkol* 2004;180:109–16.
47. Verheij M, Dewit LGH, Boomgaard MN, et al. Ionizing radiation enhances platelet adhesion to

- the extracellular matrix of human endothelial cells by an increase in the release of von Willebrand factor. *Radiat Res* 1994;137:202–7.
48. Cilliers GD, Harper IS, Lochner A. Radiation-induced changes in the ultrastructure and mechanical function of the rat heart. *Radiother Oncol* 1989;16:311–26.
 49. Yang VV, Stearner SP, Tyler SA. Radiation induced changes in the fine structure of the heart: comparison of fission neutrons and ^{60}Co gamma rays in the mouse. *Radiat Res* 1976;67:344–60.
 50. Kahn MY. Radiation induced cardiomyopathy. I. An electron microscopic study of cardiac muscle cells. *Am J Pathol* 1973;73:131–46.
 51. Maeda S. Pathology of experimental radiation pancarditis. II. Correlation between ultrastructural changes of the myocardial mitochondria and succinic dehydrogenase activity in rabbit heart receiving a single dose of X-ray irradiation. *Acta Pathol Jpn* 1982;32:199–218.
 52. Barcellos-Hoff MH. How do tissues respond to damage at the cellular level? The role of cytokines in irradiated tissues. *Radiat Res* 1998;150:S109–20.
 53. Barjaktarovic Z, Schmaltz D, Shyla A, et al. Radiation-induced signaling results in mitochondrial impairment in mouse heart at 4 weeks after exposure to X-rays. *PLoS One* 2011;6(12):e27811.
 54. Schultz-Hector S, Bohm M, Blochel A, et al. Radiation-induced heart disease: morphology, changes in catecholamine synthesis and content, β -adrenoceptor density, and hemodynamic function in an experimental model. *Radiat Res* 1992;129:281–9.
 55. Robbins ME, Diz DI. Pathogenic role of the renin-angiotensin system in modulating radiation-induced late effects. *Int J Radiat Oncol Biol Phys* 2006;64:6–12.
 56. Wu R, Zeng Y. Does angiotensin II–aldosterone have a role in radiation-induced heart disease? *Med Hypotheses* 2009;72:263–6.
 57. Yarom R, Harper IS, Wynchank S, et al. Effect of captopril on changes in rats' hearts induced by long-term irradiation. *Radiat Res* 1993;133:187–97.
 58. Sridharan V, Tripathi P, Sharma SK. Cardiac inflammation after local irradiation is influenced by the kallikrein-kinin system. *Cancer Res* 2012;72:4984–92.
 59. Boerma M, Wang J, Wondergem J, et al. Influence of mast cells on structural and functional manifestations of radiation-induced heart disease. *Cancer Res* 2005;65:3100–7.
 60. Amromin GD, Gildenhorn HL, Solomon RD, et al. The synergism of X-irradiation and cholesterol-fat feeding on the development of coronary artery lesions. *J Atheroscler Res* 1964;4:325–34.
 61. Konings AW, Hardonk MJ, Wieringa RA, et al. Initial events in radiation-induced atheromatosis I. Activation of lysosomal enzymes. *Strahlentherapie* 1975;150:444–8.
 62. Konings AW, Smit Sibinga CT, Aarnoudse MW, et al. Initial events in radiation-induced atheromatosis. II. Damage to intimal cells. *Strahlentherapie* 1978;154:795–800.
 63. Konings AW, Smit Sibinga CT, Lamberts HB. Initial events in radiation-induced atheromatosis. IV. Lipid composition of radiation-induced plaques. *Strahlentherapie* 1980;156:134–8.
 64. Konings AW, de Wit SS, Lamberts HB. Initial events in radiation-induced atheromatosis. III. Effect on lipase activity. *Strahlentherapie* 1979;155:655–7.
 65. Evans ML, Graham MM, Mahler PA, et al. Changes in vascular permeability following thorax irradiation in the rat. *Radiat Res* 1986;107:262–71.
 66. Zhou Q, Zhao Y, Li P, et al. Thrombomodulin as a marker of radiation-induced endothelial cell injury. *Radiat Res* 1992;131:285–9.
 67. Stewart FA, Hoving S, Russell NS. Vascular damage as an underlying mechanism of cardiac and cerebral toxicity in irradiated cancer patients. *Radiat Res* 2010;174:865–9.
 68. Khaled S, Gupta KB, Kucik DF. Ionizing radiation increases adhesiveness of human aortic endothelial cells via a chemokine-dependent mechanism. *Radiat Res* 2012;177:594–601.
 69. Beckman JA, Thakore A, Kalinowski BH, et al. Radiation therapy impairs endothelium-dependent vasodilation in humans. *J Am Coll Cardiol* 2001;37:761–5.
 70. Stewart FA, Heeneman S, Te Poele J, et al. Ionizing radiation accelerates the development of atherosclerotic lesions in ApoE $^{-/-}$ mice and predisposes to an inflammatory plaque phenotype prone to hemorrhage. *Am J Pathol* 2006;168:649–58.
 71. Hoving S, Heeneman S, Gijbels MJ, et al. Single-dose and fractionated irradiation promote initiation and progression of atherosclerosis and induce an inflammatory plaque phenotype in ApoE $^{-/-}$ mice. *Int J Radiat Oncol Biol Phys* 2008;71:848–57.
 72. Gabriels K, Hoving S, Seemann I, et al. Local heart irradiation of ApoE $^{-/-}$ mice induces microvascular and endocardial damage and accelerates coronary atherosclerosis. *Radiother Oncol* 2012. <http://dx.doi.org/10.1016/j.radonc.2012.08.002>.
 73. Tribble DL, Barcellos-Hoff MH, Chu BM, et al. Ionizing radiation accelerates aortic lesion formation in fat-fed mice via SOD-inhibitable processes. *Arterioscler Thromb Vasc Biol* 1999;19:1387–92.
 74. Stewart FA. Mechanisms and dose–response relationships for radiation-induced cardiovascular disease. *Ann ICRP* 2012. <http://dx.doi.org/10.1016/j.icrp.2012.06.031>.
 75. Nadlonek NA, Weyant MJ, Yu JA, et al. Radiation induces osteogenesis in human aortic valve

- interstitial cells. *J Thorac Cardiovasc Surg* 2012; 144:1466–70.
76. Hurst DW. Radiation fibrosis of pericardium, with cardiac tamponade. *Can Med Assoc J* 1959;81: 377–80.
 77. Cohn KE, Stewart JR, Fajardo LF, et al. Heart disease following radiation. *Medicine* 1967;46: 281–98.
 78. Ruckdeschel JC, Chang P, Martin RG, et al. Radiation-related pericardial effusions in patients with Hodgkin's disease. *Medicine* 1975;54:245–59.
 79. Kumar PP. Pericardial injury from mediastinal irradiation. *J Natl Med Assoc* 1980;72:591–4.
 80. Cameron J, Oesterle SN, Baldwin JC, et al. The etiologic spectrum of constrictive pericarditis. *Am Heart J* 1987;113:354–60.
 81. Ling LH, Oh JK, Schaff HV, et al. Constrictive pericarditis in the modern era: evolving clinical spectrum and impact on outcome after pericardiectomy. *Circulation* 1999;100:1380–6.
 82. Talreja DR, Edwards WD, Danielson GK, et al. Constrictive pericarditis in 26 patients with histologically normal pericardial thickness. *Circulation* 2003;108:1852–7.
 83. Greenwood RD, Rosenthal A, Cassady R, et al. Constrictive pericarditis in childhood due to mediastinal irradiation. *Circulation* 1974;50:1033–9.
 84. Applefeld MM, Cole JF, Pollock SH, et al. The late appearance of chronic pericardial disease in patients treated by radiotherapy for Hodgkin's disease. *Ann Intern Med* 1981;94:338–41.
 85. Kane GC, Edie RN, Mannion JD. Delayed appearance of effusive-constrictive pericarditis after radiation for Hodgkin lymphoma. *Ann Intern Med* 1996;124:534–5.
 86. Barbetakis N, Xenikakis T, Paliouras D, et al. Pericardiectomy for radiation-induced constrictive pericarditis. *Hellenic J Cardiol* 2010;51:214–8.
 87. George TJ, Arnaoutakis GJ, Beaty CA, et al. Contemporary etiologies, risk factors, and outcomes after pericardiectomy. *Ann Thorac Surg* 2012;94:445–51.
 88. H-Ici DO, Garot J. Radiation-induced heart disease. *Circ Heart Fail* 2011;4:e1–2.
 89. Tsai HR, Gjesdal O, Wethal T, et al. Left ventricular function assessed by two-dimensional speckle tracking echocardiography in long-term survivors of Hodgkin's lymphoma treated by mediastinal radiotherapy with or without anthracycline therapy. *Am J Cardiol* 2011;107:472–7.
 90. Billingham ME, Bristow MR, Glatstein E, et al. Adriamycin cardiotoxicity: endomyocardial biopsy evidence of enhancement by irradiation. *Am J Surg Pathol* 1977;1:17–23.
 91. Aleman BM, van den Belt-Dusebout AW, De Bruin ML, et al. Late cardiotoxicity after treatment for Hodgkin lymphoma. *Blood* 2007;109:1878–86.
 92. Shapiro CL, Hardenbergh PH, Gelman R, et al. Cardiac effects of adjuvant doxorubicin and radiation therapy in breast cancer patients. *J Clin Oncol* 1998;16:3493–501.
 93. Kushwaha SS, Fallon JT, Fuster V. Restrictive cardiomyopathy. *N Engl J Med* 1997;336:267–76.
 94. Heidenreich PA, Hancock SL, Vagelos RH, et al. Diastolic dysfunction after mediastinal irradiation. *Am Heart J* 2005;150:977–82.
 95. Hunt SA, Abraham WT, Chin MH, et al, American College of Cardiology Foundation, American Heart Association. 2009 focused update incorporated into the ACC/AHA 2005 Guidelines for the Diagnosis and Management of Heart Failure in Adults: a report of the American College of Cardiology Foundation/American Heart Association Task Force on Practice Guidelines: developed in collaboration with the International Society for Heart and Lung Transplantation. *J Am Coll Cardiol* 2009;53:e1–90.
 96. Uriel N, Vainrib A, Jorde UP, et al. Mediastinal radiation and adverse outcomes after heart transplantation. *J Heart Lung Transplant* 2010; 29:378–81.
 97. Handa N, McGregor CG, Daly RC, et al. Heart transplantation for radiation-associated end-stage heart failure. *Transpl Int* 2000;13:162–5.
 98. Heidenreich PA, Hancock SL, Lee BK, et al. Asymptomatic cardiac disease following mediastinal irradiation. *J Am Coll Cardiol* 2003;42:743–9.
 99. Cella L, Liuzzi R, Conson M, et al. Dosimetric predictors of asymptomatic heart valvular dysfunction following mediastinal irradiation for Hodgkin's lymphoma. *Radiother Oncol* 2011; 101:316–21.
 100. Bose AS, Shetty V, Sadiq A, et al. Radiation induced cardiac valve disease in a man from Chernobyl. *J Am Soc Echocardiogr* 2009;22:973.e1-3.
 101. Bruhl SR, Sheikh M, Adlakha S, et al. Endovascular therapy for radiation-induced pulmonary artery stenosis: a case report and review of the literature. *Heart Lung* 2012;41:87–9.
 102. Janelle GM, Mnookin SC, Thomas JJ, et al. Surgical approach for a patient with aortic stenosis and a frozen mediastinum. *J Cardiothorac Vasc Anesth* 2003;17:770–2.
 103. Adabag AS, Dykoski R, Ward H, et al. Critical stenosis of aortic and mitral valves after mediastinal irradiation. *Catheter Cardiovasc Interv* 2004;63: 247–50.
 104. Carlson RG, Mayfield WR, Normann S, et al. Radiation-induced valvular disease. *Chest* 1991;99: 538–45.
 105. Handa N, McGregor CG, Danielson GK, et al. Valvular heart operation in patients with previous mediastinal radiation therapy. *Ann Thorac Surg* 2001;71:1880–4.

106. Crestanello JA, McGregor CG, Danielson GK, et al. Mitral and tricuspid valve repair in patients with previous mediastinal radiation therapy. *Ann Thorac Surg* 2004;78:826–31.
107. Veeragandham RS, Goldin MD. Surgical management of radiation-induced heart disease. *Ann Thorac Surg* 1998;65:1014–9.
108. Latib A, Montorfano M, Figini F, et al. Percutaneous valve replacement in a young adult for radiation-induced aortic stenosis. *J Cardiovasc Med* 2012;13:397–8.
109. Letsas KP, Korantzopoulos P, Evangelou D, et al. Acute myocardial infarction with normal coronary arteries in a patient with Hodgkin's disease: a late complication of irradiation and chemotherapy. *Tex Heart Inst J* 2006;33:512–4.
110. Annett LS, Anderson RP, Li W, et al. Coronary artery disease following mediastinal radiation therapy. *J Thorac Cardiovasc Surg* 1983;85:257–63.
111. Nilsson G, Holmberg L, Garmo H, et al. Distribution of coronary artery stenosis after radiation for breast cancer. *J Clin Oncol* 2012;30:380–6.
112. Heidenreich PA, Schnittger I, Strauss HW, et al. Screening for coronary artery disease after mediastinal irradiation for Hodgkin's disease. *J Clin Oncol* 2007;25:43–9.
113. Santoro F, Ferraretti A, Centola A, et al. Early clinical presentation of diffuse, severe, multi-district atherosclerosis after radiation therapy for Hodgkin lymphoma. *Int J Cardiol* 2012. <http://dx.doi.org/10.1016/j.ijcard.2012.08.027>.
114. Orzan F, Brusca A, Conte MR, et al. Severe coronary artery disease after radiation therapy of the chest and mediastinum: clinical presentation and treatment. *Br Heart J* 1993;69:496–500.
115. Schomig K, Ndrepepa G, Mehilli J, et al. Thoracic radiotherapy in patients with lymphoma and restenosis after coronary stent placement. *Catheter Cardiovasc Interv* 2007;70:359–65.
116. Waksman R, Ajani AE, White RL, et al. Five-year follow-up after intracoronary gamma radiation therapy for in-stent restenosis. *Circulation* 2004;109:340–4.
117. Wiedermann JG, Marboe C, Amols H, et al. Intracoronary irradiation markedly reduces restenosis after balloon angioplasty in a porcine model. *J Am Coll Cardiol* 1994;23:1491–8.
118. Ellis GR, Penny WJ. Hibernating myocardium caused by isolated, radiation induced left main stem coronary artery stenosis. *Heart* 1997;78:419–20.
119. Seddon B, Cook A, Gothard L, et al. Detection of defects in myocardial perfusion imaging in patients with early breast cancer treated with radiotherapy. *Radiother Oncol* 2002;64:53–63.
120. Marks LB, Yu X, Prosnitz RG, et al. The incidence and functional consequences of RT-associated cardiac perfusion defects. *Int J Radiat Oncol Biol Phys* 2005;63:214–23.
121. Andersen R, Wethal T, Günther A, et al. Relation of coronary artery calcium score to premature coronary artery disease in survivors >15 years of Hodgkin's lymphoma. *Am J Cardiol* 2010;105:149–52.
122. Kupeli S, Hazirolan T, Varan A, et al. Evaluation of coronary artery disease by computed tomography angiography in patients treated for childhood Hodgkin's lymphoma. *J Clin Oncol* 2010;28:1025–30.
123. Rademaker J, Schoder H, Ariaratnam NS, et al. Coronary artery disease after radiation therapy for Hodgkin's lymphoma: coronary CT angiography findings and calcium scores in nine asymptomatic patients. *Am J Roentgenol* 2008;191:32–7.
124. Wright RS, Anderson JL, Adams CD, et al. American College of Cardiology Foundation/American Heart Association Task Force on Practice Guidelines. 2011 ACCF/AHA focused update incorporated into the ACC/AHA 2007 Guidelines for the Management of Patients with Unstable Angina/Non-ST-Elevation Myocardial Infarction: a report of the American College of Cardiology Foundation/American Heart Association Task Force on Practice Guidelines developed in collaboration with the American Academy of Family Physicians, Society for Cardiovascular Angiography and Interventions, and the Society of Thoracic Surgeons. *J Am Coll Cardiol* 2011;57:e215–367.
125. Gibbons RJ, Abrams J, Chatterjee K, et al. American College of Cardiology, American Heart Association Task Force on practice guidelines (Committee on the Management of Patients With Chronic Stable Angina). ACC/AHA 2002 guideline update for the management of patients with chronic stable angina—summary article: a report of the American College of Cardiology/American Heart Association Task Force on practice guidelines (Committee on the Management of Patients With Chronic Stable Angina). *J Am Coll Cardiol* 2003;41:159–68.
126. Salemi VM, Dabarian AL, Nastari L, et al. Treatment of left main coronary artery lesion after late thoracic radiotherapy. *Arq Bras Cardiol* 2011;97:e53–55.
127. Aqel RA, Lloyd SG, Gupta H, et al. Three-vessel coronary artery disease, aortic stenosis, and constrictive pericarditis 27 years after chest radiation therapy: a case report. *Heart Surg Forum* 2006;9:E728–30.
128. Khan MH, Ettinger SM. Post mediastinal radiation coronary artery disease and its effects on arterial conduits. *Catheter Cardiovasc Interv* 2001;52:242–8.
129. Gansera B, Schmidler F, Angelis I, et al. Quality of internal thoracic artery grafts after mediastinal irradiation. *Ann Thorac Surg* 2007;84:1479–84.

130. Handler CE, Livesey S, Lawton PA. Coronary ostial stenosis after radiotherapy: angioplasty or coronary artery surgery? *Br Heart J* 1989;61:208–11.
131. Patel MR, Dehmer GJ, Hirshfeld JW, et al. ACCF/SCAI/STS/AATS/AHA/ASNC/HFSA/SCCT 2012 Appropriate use criteria for coronary revascularization focused update: a report of the American College of Cardiology Foundation Appropriate Use Criteria Task Force, Society for Cardiovascular Angiography and Interventions, Society of Thoracic Surgeons, American Association for Thoracic Surgery, American Heart Association, American Society of Nuclear Cardiology, and the Society of Cardiovascular Computed Tomography. *J Am Coll Cardiol* 2012;59:857–81.
132. Dorresteijn LD, Kappelle AC, Boogrd W, et al. Increased risk of ischemic stroke after radiotherapy on the neck in patients younger than 60 years. *J Clin Oncol* 2001;20:282–8.
133. Slama MS, Le Guludec D, Sebag C, et al. Complete atrioventricular block following mediastinal irradiation: a report of six cases. *Pacing Clin Electrophysiol* 1991;14:1112–8.
134. de Waard DE, Verhorst PM, Visser CA. Exercise-induced syncope as late consequence of radiotherapy. *Int J Cardiol* 1996;57:289–91.
135. Orzan F, Brusca A, Gaita F, et al. Associated cardiac lesions in patients with radiation-induced complete heart block. *Int J Cardiol* 1993;39:151–6.
136. Cohen SI, Bharati S, Glass J, et al. Radiotherapy as a cause of complete atrioventricular block in Hodgkin's disease. An electrophysiological-pathological correlation. *Arch Intern Med* 1981;141:676–9.
137. Santoro F, Ieva R, Lupo P, et al. Late calcification of the mitral-aortic junction causing transient complete atrio-ventricular block after mediastinal radiation of Hodgkin lymphoma: multimodal visualization. *Int J Cardiol* 2012;155:e49–50.
138. Larsen RL, Jakacki RI, Vetter VL, et al. Electrocardiographic changes and arrhythmias after cancer therapy in children and young adults. *Am J Cardiol* 1992;70:73–7.
139. Groarke JD, Tanguturi VK, Hainer J, et al. Abnormal exercise response in long-term survivors of Hodgkin lymphoma treated with thoracic irradiation. *J Am Coll Cardiol* 2015;65:573–83.
140. Cole CR, Blackstone EH, Pashkow FJ, et al. Heart-rate recovery immediately after exercise as a predictor of mortality. *N Engl J Med* 1999;341:1351–7.
141. Moulder JE, Fish BL, Cohen EP. Radiation nephropathy is treatable with an angiotensin converting enzyme inhibitor or an angiotensin II type-1 (AT1) receptor antagonist. *Radiother Oncol* 1998;46:307–15.
142. Kohl RR, Kolozsvary A, Brown SL, et al. Differential radiation effect in tumor and normal tissue after treatment with ramipril, an angiotensin-converting enzyme inhibitor. *Radiat Res* 2007;168:440–5.
143. van der Veen SJ, Ghobadi G, de Boer RA, et al. ACE inhibition attenuates radiation-induced cardiopulmonary damage. *Radiother Oncol* 2015;114:96–103.
144. Kharofa J, Cohen EP, Tomic R, et al. Decreased risk of radiation pneumonitis with incidental concurrent use of angiotensin-converting enzyme inhibitors and thoracic radiation therapy. *Int J Radiat Oncol Biol Phys* 2012;84:238–43.
145. Lenarczyk M, Su J, Haworth ST, et al. Simvastatin mitigates increases in risk factors for and the occurrence of cardiac disease following 10 Gy total body irradiation. *Pharmacol Res Perspect* 2015;3:e00145.
146. Nellessen U, Zingel M, Hecker H, et al. Effects of radiation therapy on myocardial cell integrity and pump function: which role for cardiac biomarkers? *Chemotherapy* 2010;56:147–52.
147. Lancellotti P, Nkomo VT, Badano LP, et al. Expert consensus for multi-modality imaging evaluation of cardiovascular complications of radiotherapy in adults: a report from the European Association of Cardiovascular Imaging and the American Society of Echocardiography. *J Am Soc Echocardiogr* 2013;26:1013–32.
148. van Leeuwen-Segarceanu EM, Bos WJ, Dorresteijn LD, et al. Screening Hodgkin lymphoma survivors for radiotherapy induced cardiovascular disease. *Cancer Treat Rev* 2011;37:391–403.
149. Iliescu CA, Grines CL, Herrmann J, et al. SCAI Expert consensus statement: evaluation, management, and special considerations of cardio-oncology patients in the cardiac catheterization laboratory (endorsed by the Cardiological Society of India, and Sociedad Latino Americana de Cardiologia Intervencionista). *Catheter Cardiovasc Interv* 2016. <http://dx.doi.org/10.1002/ccd.26379>.
150. Wethal T, Lund MB, Edvardsen T, et al. Valvular dysfunction and left ventricular changes in Hodgkin's lymphoma survivors. A longitudinal study. *Br J Cancer* 2009;101:575–81.