

# UCLA

## UCLA Previously Published Works

### Title

Characterizing the genetic architecture of drug response using gene-context interaction methods

### Permalink

<https://escholarship.org/uc/item/50t5964t>

### Journal

Cell Genomics, 4(12)

### ISSN

2666-979X

### Authors

Sadowski, Michal

Thompson, Mike

Mefford, Joel

et al.

### Publication Date

2024-12-01

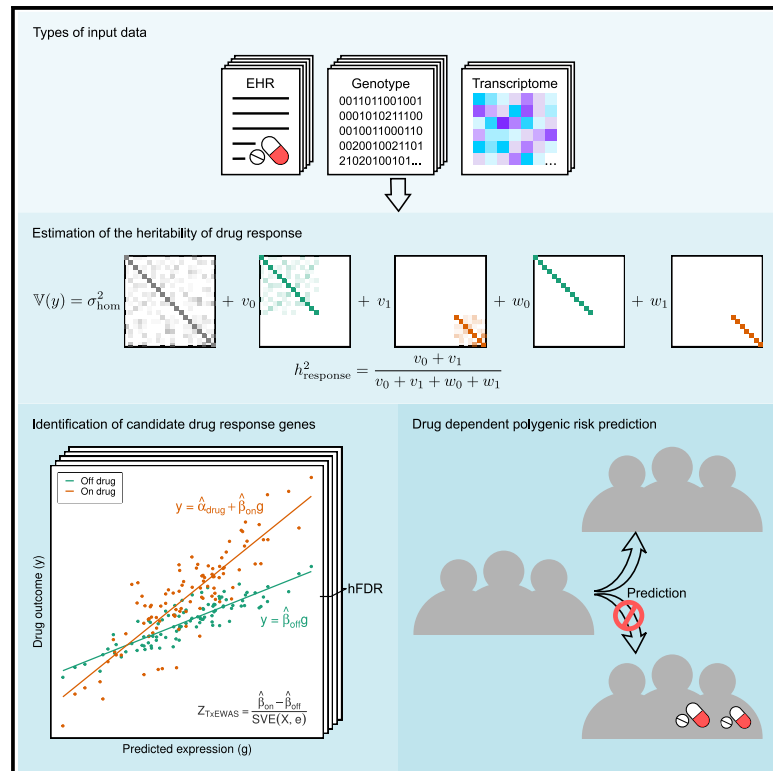
### DOI

10.1016/j.xgen.2024.100722

Peer reviewed

# Characterizing the genetic architecture of drug response using gene-context interaction methods

## Graphical abstract



## Authors

Michal Sadowski, Mike Thompson, Joel Mefford, ..., Sriram Sankararaman, Andy W. Dahl, Noah Zaitlen

## Correspondence

michalsadowski@ucla.edu (M.S.),  
nzaitlen@ucla.edu (N.Z.)

## In brief

Sadowski et al. propose a framework to study the genetics of response to commonly prescribed drugs in large biobanks. They quantify the heritability of response to statins, metformin, warfarin, and methotrexate, and identify associated genes. Their analysis also shows the importance of accounting for drug use in genetic risk prediction.

## Highlights

- Large biobank data provides insights into the genetic architecture of drug response
- Genome-wide genetic variation broadly modifies drug response
- Hundreds of genes associated with drug response are identified
- Drug use information should be accounted for in genetic risk prediction



## Article

# Characterizing the genetic architecture of drug response using gene-context interaction methods

Michal Sadowski,<sup>1,15,\*</sup> Mike Thompson,<sup>1</sup> Joel Mefford,<sup>2</sup> Tanushree Haldar,<sup>3,4</sup> Akinyemi Oni-Orisan,<sup>3,4</sup> Richard Border,<sup>2,5,6</sup> Ali Pazokitoroudi,<sup>5</sup> Na Cai,<sup>7,8,9</sup> Julien F. Ayroles,<sup>10,11</sup> Sriram Sankararaman,<sup>1,5,6,12</sup> Andy W. Dahl,<sup>13,14</sup> and Noah Zaitlen<sup>1,2,6,12,14,\*</sup>

<sup>1</sup>Bioinformatics Interdepartmental Program, University of California Los Angeles, Los Angeles, CA 90095, USA

<sup>2</sup>Department of Neurology, University of California Los Angeles, Los Angeles, CA 90095, USA

<sup>3</sup>Institute for Human Genetics, University of California San Francisco, San Francisco, CA 94143, USA

<sup>4</sup>Department of Clinical Pharmacy, University of California San Francisco, San Francisco, CA 94143, USA

<sup>5</sup>Department of Computer Science, University of California Los Angeles, Los Angeles, CA 90095, USA

<sup>6</sup>Department of Computational Medicine, David Geffen School of Medicine, University of California Los Angeles, Los Angeles, CA 90095, USA

<sup>7</sup>Helmholtz Pioneer Campus, Helmholtz Munich, 85764 Neuherberg, Germany

<sup>8</sup>Computational Health Centre, Helmholtz Munich, 85764 Neuherberg, Germany

<sup>9</sup>School of Medicine and Health, Technical University of Munich, 80333 Munich, Germany

<sup>10</sup>Department of Ecology and Evolution, Princeton University, Princeton, NJ 08544, USA

<sup>11</sup>Lewis Sigler Institute for Integrative Genomics, Princeton University, Princeton, NJ 08544, USA

<sup>12</sup>Department of Human Genetics, David Geffen School of Medicine, University of California Los Angeles, Los Angeles, CA 90095, USA

<sup>13</sup>Section of Genetic Medicine, Department of Medicine, University of Chicago, Chicago, IL 60637, USA

<sup>14</sup>These authors contributed equally

<sup>15</sup>Lead contact

\*Correspondence: [michalsadowski@ucla.edu](mailto:michalsadowski@ucla.edu) (M.S.), [nzaitlen@ucla.edu](mailto:nzaitlen@ucla.edu) (N.Z.)

<https://doi.org/10.1016/j.xgen.2024.100722>

## SUMMARY

Identifying factors that affect treatment response is a central objective of clinical research, yet the role of common genetic variation remains largely unknown. Here, we develop a framework to study the genetic architecture of response to commonly prescribed drugs in large biobanks. We quantify treatment response heritability for statins, metformin, warfarin, and methotrexate in the UK Biobank. We find that genetic variation modifies the primary effect of statins on LDL cholesterol (9% heritable) as well as their side effects on hemoglobin A1c and blood glucose (10% and 11% heritable, respectively). We identify dozens of genes that modify drug response, which we replicate in a retrospective pharmacogenomic study. Finally, we find that polygenic score (PGS) accuracy varies up to 2-fold depending on treatment status, showing that standard PGSs are likely to underperform in clinical contexts.

## INTRODUCTION

Initiation of drug treatment poses a risk for adverse reactions and long-term side effects, sometimes without guaranteed effectiveness for an individual patient.<sup>1–6</sup> Genetic testing holds promise for safer and more effective treatment by predicting each individual's specific drug response.<sup>7–10</sup> To date, several large-effect pharmacogenomic genes have been identified<sup>11–17</sup>; these genes are commonly tested in the clinic to guide administration and dosing of certain medications,<sup>18–21</sup> which reduces the incidence of certain severe adverse drug reactions.<sup>15,17,22,23</sup> More recently, additional pharmacogenomic genes have been identified by genome-wide association studies (GWASs) in randomized controlled trials (RCTs), pharmacogenomic studies nested within large epidemiological cohort studies, or meta-analyses of both.<sup>24,25</sup> For example, the Clinical Pharmacogenetics Implementation Consortium (CPIC)<sup>26</sup>—which curates gene-drug pairs and publishes corresponding clinical practice guidelines—

currently lists 119 unique pharmacogenomic genes for 293 drugs with variable levels of evidence or actionability. Additionally, pharmacogenomic studies have reported significant heritability of drug response phenotypes,<sup>27,28</sup> that most variants and genes discovered in pharmacogenomic GWASs differ from candidate genes,<sup>29</sup> and that large-effect variants likely contribute little to the heritability of pharmacogenomic phenotypes.<sup>30</sup> However, access to genetic data from RCTs is limited, nested pharmacogenomic studies are rare, and both have much smaller sample sizes than those available in biobanks, so they are generally underpowered to investigate the genetic architecture of drug response.

Even more recently, genome-wide genetic data have been considered for clinical biomarkers of disease risk in the form of polygenic scores (PGSs).<sup>31–35</sup> PGSs predict disease risk by aggregating many risk alleles identified by GWASs.<sup>36</sup> For some diseases, PGSs have comparable performance to current clinical risk-prediction algorithms, at least in European ancestry



**Table 1. Drug exposures and responses examined in this work**

Drug exposure	Number of users (non-users)	Description	Primary effects	Side effects
Statins	56,169 (286,088)	low-density lipoprotein (LDL) cholesterol-lowering therapy prescribed to prevent atherosclerotic cardiovascular disease (ASCVD) events	LDL cholesterol, cardiovascular disease (CVD) <sup>49,50</sup>	glucose, hemoglobin A1c, type 2 diabetes (T2D) <sup>51–54</sup>
Metformin	8,606 (333,651)	antidiabetic therapy	glucose, A1c <sup>55–58</sup>	body mass index (BMI), <sup>59,60</sup> LDL cholesterol, CVD <sup>61,62</sup>
Warfarin	3,753 (338,504)	anticoagulant therapy	reticulocyte count, hematocrit, plateletcrit, venous thromboembolism (VTE) <sup>63–65</sup>	none examined
Methotrexate	1,865 (340,392)	antirheumatic therapy	C-reactive protein (CRP) <sup>66,67</sup>	none examined

individuals.<sup>37–39</sup> However, very few genome-wide predictions for treatment response have been developed,<sup>40,41</sup> even though their potential benefits have been discussed extensively.<sup>42–45</sup>

Here, we build a framework to study genome-wide genetic effects on the primary and side effects of common drugs. Our approach leverages recent and novel methods for gene-environment interaction (GxE). Crucially, our methods apply to passively obtained electronic health records (EHRs), enabling analyses of sample sizes far exceeding randomized controlled trials. We apply our approach to some of the most common drugs in the UK Biobank: statins, metformin, warfarin, and methotrexate. Our methods quantify genome-wide heritability of drug response, identify specific genes modifying drug response, and characterize the implications for clinical use of PGSs. We replicate many of the gene-drug interactions in a longitudinal pharmacogenomic study of statins' effects on LDL cholesterol.<sup>46,47</sup> Overall, our framework characterizes the genetic architecture of individual-level response to modifiable risk factors in passively obtained EHRs.

## RESULTS

### Study overview

We apply our framework to 342,257 unrelated white British individuals in the UK Biobank<sup>48</sup> (STAR Methods). We focus on four commonly prescribed drugs in this dataset: statins, metformin, warfarin, and methotrexate. For each drug, we study phenotypes related to its primary effect as well as phenotypes related to its possible side effects (Table 1).

We first define and develop a novel approach to estimate the aggregate impact of common genetic variation on treatment response ( $h^2_{\text{response}}$ ).  $h^2_{\text{response}}$  is the SNP heritability of the phenotype change after treatment (Figure 1A, STAR Methods). We estimate this parameter by post-processing results from GxEMM,<sup>68</sup> which was developed to estimate GxE-based heritability. GxEMM explicitly models treatment-dependent heteroscedasticity, which is essential for unbiased estimates of treatment-dependent heritability. Because this approach aggregates genetic effects across the genome, it is powerful but does not identify specific genes.

Next, we develop a new method called TxEWAS to identify specific genes that modify drug response. TxEWAS is a GxE extension of the transcriptome-wide association study

(TWAS<sup>69,70</sup>) framework. It genetically imputes gene expression levels using reference transcriptomics data, as in a TWAS, and then tests whether the imputed expression interacts with an environmental (“E”) variable (Figure 1B, STAR Methods). A major challenge in TxEWAS is accounting for treatment-dependent heteroscedasticity, which we accomplish using the sandwich variance estimator (SVE)<sup>71</sup> (Figures 1C, S1A, and S1B, STAR Methods). Compared to SNP-level tests, TxEWAS improves interpretability by suggesting possible causal genes and can improve power by aggregating multiple SNP effects and therefore reducing the number of statistical tests.<sup>69,70</sup>

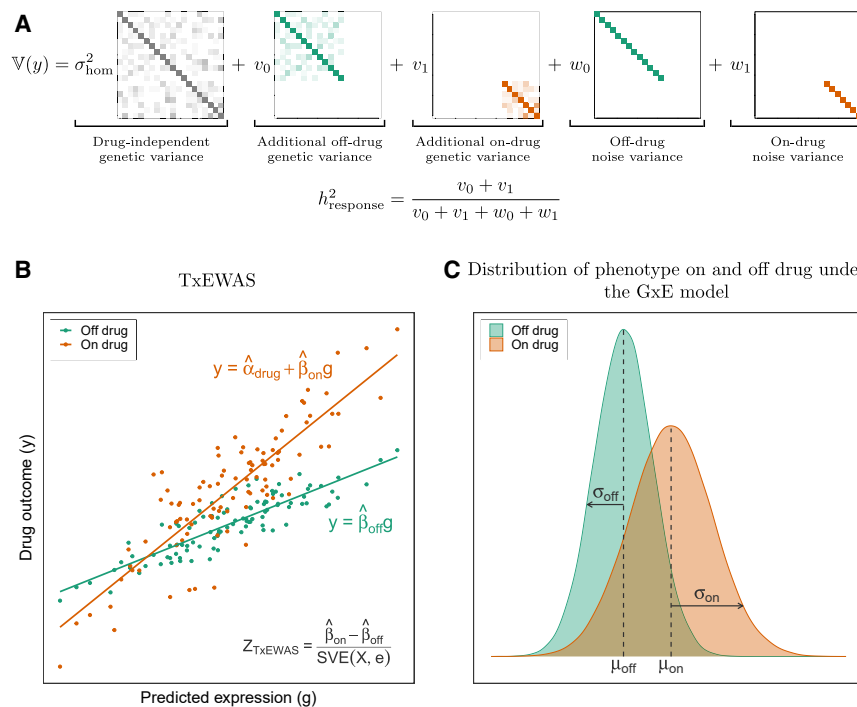
Like all existing gene-environment interaction models, GxEMM and TxEWAS are susceptible to endogeneity bias because individuals' treatments depend on their baseline phenotypes. We use theory, simulations, and additional data to characterize and account for this bias (Figures S2 and S3, supplemental note). Importantly, we test the gene-statin interaction effects on LDL cholesterol in a retrospective longitudinal pharmacogenomic study, which validates these specific results as well as our cross-sectional approach.

Finally, we study the impact of treatment status, which varies significantly between individuals, on the performance of polygenic scores. We evaluate changes in PGS prediction accuracy by varying the proportion of treated individuals in the training and/or validation data.

### Primary effects and side effects of commonly prescribed drugs are heritable

We estimated  $h^2_{\text{response}}$  for statins' association with LDL cholesterol at 9% (Table 2). This is consistent with a prior estimate of 12% (SE = 9%) derived by comparing first-degree relatives.<sup>46</sup> Statin-dependent genetic effects on A1c and blood glucose were estimated at 10% and 11%, respectively (Table 2). For comparison, the statin-independent heritabilities for these traits ( $h^2_{\text{nom}}$ ) are 21%, 29%, and 11% for LDL cholesterol, A1c, and blood glucose, respectively (Table 2).

We next found that the  $h^2_{\text{response}}$  for metformin's associations with LDL cholesterol and BMI are 2% and 17%, respectively (Table 2), and the metformin-independent heritabilities are 11% and 28%, respectively. However, we did not find significant heritability of response to warfarin or methotrexate, which was expected as we have lower power for less common drugs (Table S1).



**Figure 1. Schematic of the GxE framework to analyze treatment response in cross-sectional data**

(A) We use GxEEMM to estimate the heritability of treatment response ( $h_{\text{response}}^2$ ) based on the genetic ( $v$ ) and nongenetic ( $w$ ) variances specific to treatment status (STAR Methods).

(B) We identify genes that modify treatment response using TxEWAS, a new method to estimate gene-level GxE interaction. TxEWAS genetically imputes gene expression and tests if this gene's effect interacts with some "E."

(C) Statistical interactions with treatment status induce treatment-dependent heteroscedasticity that must be modeled in GxEEMM and TxEWAS.

We next separately evaluated heritabilities in statin users vs. non-users. We observe that the heritability of LDL cholesterol is much higher in individuals who do not take statins (41% vs. 27%, Tables S2 and S3). This suggests that statins mitigate the genetic effects on LDL cholesterol present in untreated individuals (Table S4). We found a qualitatively different pattern for the side effect of statins on A1c and blood glucose, where statin users had comparable or higher heritability (Table S2). This suggests that statins activate or amplify genetic effects on blood sugar compared to untreated individuals. For metformin users, we found significantly higher heritability for BMI (51% vs. 31%) and lower heritability for LDL cholesterol (11% vs. 23%).

### Identifying gene-drug interactions for primary and side effects

We next sought to identify specific genes that modify drug response. We found 156 genes that modify statins' association with LDL cholesterol (hierarchical FDR<sup>72,73</sup>: hFDR < 10%, Figures 2A and S4A, Table S5). These genes include *APOE*, which has been previously implicated in response to statin therapy<sup>25</sup> and is listed by CPIC as one of 13 gene-statin pharmacogenes. None of the other 12 CPIC genes overlap our TxEWAS genes, but four of them are within 200 kb of our TxEWAS genes (*CYP2C9*, *HMGCR*, *CETP*, *LDLR*). Overall, this demonstrates some alignment of our results with existing evidence. Additionally, our discovery of many genes that are not in CPIC further documents the complexity of drug response phenotypes.<sup>29,30</sup>

Of the 156 genes significantly interacting with statins, 131 also have significant additive effects (hFDR < 10%). Interestingly, all

131 interaction effects have opposite signs to the main effects (Figures 3A and S5). That is, statins uniformly buffer these genetic effects on LDL cholesterol. This is consistent with our observation that LDL cholesterol has higher heritability in statin non-users than users (Table S2).

At the time of conducting this study, the NHGRI-EBI GWAS Catalog<sup>74</sup> reports 10 unique SNP associations with LDL cholesterol change in response to statin therapy,

and 2,766 such associations with LDL cholesterol levels (STAR Methods). These SNP associations were mapped—either by the studies or the GWAS Catalog—to 17 and 1,468 genes, respectively. Of the 156 gene-statin interactions identified in the LDL cholesterol TxEWAS, four overlap the 17 genes reported by GWAS for LDL cholesterol change (*SMARCA4*, *APOE*, *PCSK9*, *APOC1*). Those four, as well as 51 additional TxEWAS genes, overlap the 1,468 GWAS genes for LDL cholesterol levels (Figure S6A). Compared to a TWAS for LDL cholesterol (STAR Methods), 135 of the 156 TxEWAS genes are shared, and 21 are new (Figure S6B). These 135 shared genes include the 55 shared with GWAS (Figure S6C).

A pathway enrichment analysis with ConsensusPathDB<sup>75</sup> of the 156 interacting genes found enrichments mostly in cholesterol and lipoprotein metabolism pathways, as well as regulatory and transcription pathways (Table S6). For example, the two most significant Wikipathways were "Metabolic pathway of LDL, HDL, and TG, including diseases" and "Statin inhibition of cholesterol production," and the top KEGG and Reactome pathways also included cholesterol-related biology.

We next tested which genes modify the side effects of statins on A1c and blood glucose, and we identified 53 and 6, respectively (Figures 2B, 2C, S4B, and S4C). 28 of the 53 genes with statin-dependent effects on A1c lie in the highly complex MHC region, and it is likely that many of these are not causal.<sup>76</sup> One example gene outside the MHC is *GIPR*, which is known to regulate insulin levels in the presence of elevated glucose in mice<sup>77</sup> and is associated with increased risk of hyperinsulinemia after an antipsychotic treatment.<sup>78</sup> All six genes that modify statins' association with glucose overlap the statin-dependent A1c loci (Figure 2C).

**Table 2. Statistically significant drug-independent heritability and heritability of drug response estimates**

Drug/response	$h^2_{\text{hom}}$	$h^2_{\text{response}}$	$h^2_{\text{response}}$ $p$ value
<b>Statins</b>			
LDL cholesterol	0.21	0.089	$1.13 \times 10^{-30}$
A1c	0.29	0.102	$1.79 \times 10^{-6}$
glucose	0.11	0.111	$2.26 \times 10^{-4}$
<b>Metformin</b>			
LDL cholesterol	0.11	0.023	0.016
BMI	0.28	0.170	$2.51 \times 10^{-4}$

Corresponding estimates for all tested drug exposures and responses can be found in [Table S1](#).

Of the 53 genes with statin-dependent effects on A1c, 36 have significant additive effects. However, unlike the genes modifying statins' association with LDL cholesterol, only four of them have an interaction effect with opposite sign to the main effect ([Figures 3B and S7](#)). Similarly, only three of the six genes with statin-dependent effects on glucose exhibit significant additive effects, and all of these effects have the same sign as the corresponding interaction effects ([Figure 3C](#)). Broadly, this suggests that some genetic effects on A1c and glucose are amplified by statins, while others are dampened.

We next analyzed metformin, warfarin, and methotrexate for gene-drug interactions. Although these have many fewer users ([Table 1](#)), we identified three gene-warfarin interactions effects on reticulocyte count (*HIF3A*, implicated in the response to hypoxia<sup>79</sup>; *ITGA1*, shown to be upregulated at high oxygen levels in the environment<sup>80</sup>; and *AL049542.1*) and one gene-methotrexate interaction effect on C-reactive protein levels (*C6orf164*).

The results are highly concordant if we exclude individuals who take combinations of the aforementioned drugs ([Figure S8; Table S5, supplemental note](#)).

### Replicating gene-drug interactions in a pharmacogenomic study

The UK Biobank EHR data are passively obtained from an observational cohort and may suffer from confounding due to endogeneity in treatment status—sick individuals are more likely to be on treatments, and this may be driven in part by genetics. Therefore, we validated our approach by replicating the gene-level interactions for statins' primary effect in a pharmacogenomic study. The replication study analyzed statin-induced LDL cholesterol change in 34,874 statin users from the Kaiser Permanente GERA cohort (Genetic Epidemiology Research on Adult Health and Aging)<sup>46,47</sup> ([STAR Methods](#)). Of the 156 significant genes that we identified from cross-sectional data, 155 could be studied in the replication cohort ([STAR Methods](#)). We found that 36/155 genes replicated (hFDR < 10%, [Table S5](#)) and that the remaining genes were significantly enriched for low  $p$  values < 0.1 (binomial test  $p$  value = 0.002).

Two of the 36 replicated interacting genes (*APOE* and *APOC1*) were previously reported in GWASs of LDL cholesterol change in response to statin therapy. These two and 16 more were reported by GWASs for LDL cholesterol levels. We then studied the remaining 18/36 genes using pathway analysis, which re-

vealed enrichments in plasma lipoprotein processes, statin inhibition of cholesterol production, and cholesterol metabolism ([Table S7](#)). All of the 36 replicated interacting genes were identified by the standard TWAS for LDL cholesterol levels.

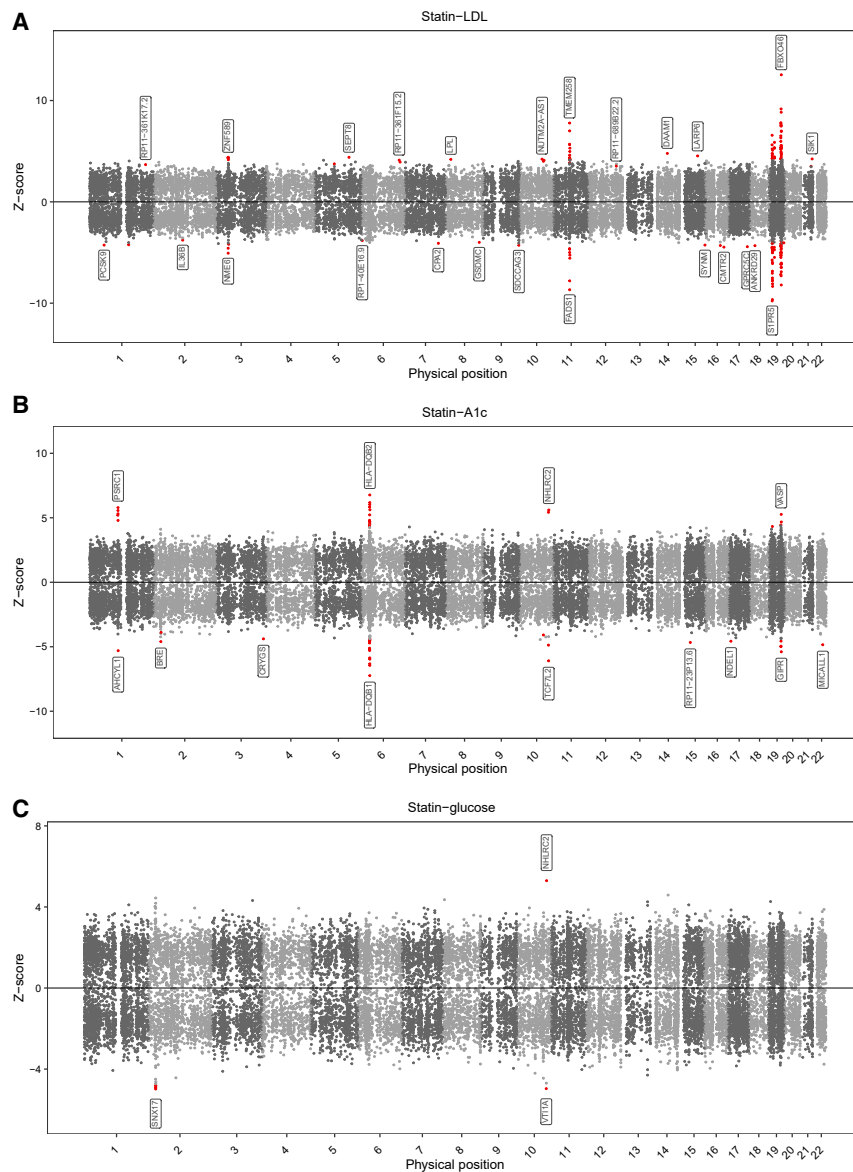
### Gene-drug interactions impact polygenic prediction accuracy

Gene-drug interactions may reduce the performance of ordinary PGSs, which are additive genetic predictors and must compromise between optimizing for users and non-users. We assessed the impact of this bias on PGS performance by varying the proportion of individuals on a drug in the training and/or testing cohorts, keeping the training sample size fixed. We focused on statins and metformin because they had treatment response heritability ([Table S1, STAR Methods](#)).

First, we evaluated PGSs for A1c as a function of statin use ([Table 3](#)). We find that statin users are better predicted by the PGS trained on statin users, and vice versa for statin non-users. Numerically, prediction accuracy of the PGS for A1c in statin users increases by 31% when it is trained in treated vs. untreated individuals. While this is intuitive, it need not hold in general. For example, if two groups share identical genetic effects but have different levels of non-genetic noise, the PGS should always be trained in the less-noisy group. Indeed, we observe this pattern for LDL cholesterol, which has higher heritability in statin non-users than users, and we find that training a PGS in non-users is optimal for predicting in users ([Table 3](#)). We performed extensive simulations to confirm these results ([Table S8, STAR Methods](#)). Finally, we evaluated an “agnostic” PGS built from a mix of users and non-users without accounting for statins, and we found that this PGS performed worst of all ([Table 3](#)). This illustrates an unappreciated limitation of standard approaches to building PGSs in biobanks.

We found qualitatively similar results for PGSs dependent on metformin, though they had smaller sample size and were weaker: BMI for users were better predicted using the PGS built from users, while LDL cholesterol was always better predicted using non-users ([Table 3](#)).

Overall, our results demonstrate that the accuracy of polygenic prediction is significantly affected by the distribution of drug use status in both GWAS and prediction cohorts, and that the optimal approach varies across drugs and phenotypes. In particular, when genetic effects on an outcome are simply buffered by a drug, the optimal PGS for both users and non-users will be trained solely in drug non-users. This is because the genetic effects are perfectly correlated between groups, yet larger in the non-user group. Conversely, if the drug does not simply buffer baseline genetic effects, then the genetic correlation between users and non-users will decrease, and it becomes more important to match drug use status between GWAS and prediction cohorts. We hypothesize that the former scenario will be more frequent when studying the primary effect of a drug, and the latter will be more frequent for side effects; this hypothesis is consistent with our observation for statins' associations with LDL cholesterol and A1c. In general, the optimal PGS will depend on the net effect of these parameters and the available sample sizes for users and non-users ([Table S9](#)).



**Figure 2. Manhattan plots of gene-statin interactions for low-density lipoprotein cholesterol and for hemoglobin A1c and blood glucose**

(A) Manhattan plot of gene-statin interaction effects for LDL cholesterol (primary effect). Each point represents a single gene, with physical position plotted on the x axis and standardized effect size plotted on the y axis. The most extreme effect across tissues is shown for each gene. Significant associations are highlighted in red, and the strongest associations on each chromosome are labeled.

(B and C) Same as (A), but for A1c and blood glucose (side effects).

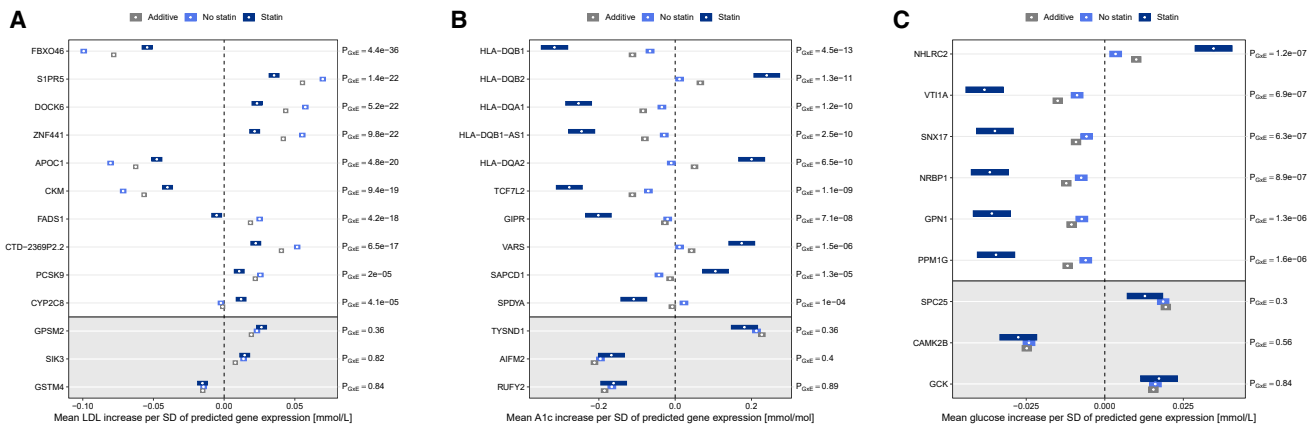
Our results suggest that genome-wide genetic variation broadly modifies drug response. This is an important extension of pharmacogenomic studies, which usually focus on large-effect genes directly involved in drug metabolism. This extension is consistent with the overall arc of human genetic studies, where first large-effect genes are identified and then, as sample sizes grow and methods mature, genome-wide signals are identified.<sup>81,82</sup>

We observe a large, but not complete, overlap between statin-interacting genes identified with TxEWAS for LDL cholesterol and TWAS and GWAS associations with baseline LDL cholesterol (STAR Methods). This result calls for caution, since it could be explained by endogeneity (Figure S2, supplemental note) or model misspecification, which are one of the main concerns in all GxE studies. Nonetheless, reassuringly, many of these genes replicated in a longitudinal study, and some have additional forms of experimental evidence.<sup>83–85</sup>

## DISCUSSION

We quantified the genome-wide contribution of genetic variation to drug response ( $h^2_{\text{response}}$ ) for some of the most commonly prescribed drugs worldwide. We identified specific genes driving this variation, and we validated the gene-statin interaction effects on LDL cholesterol in a longitudinal pharmacogenomic study. We found that such genetic effects on drug response have downstream implications for PGs, which are moving toward clinical use. In particular, we showed that current PGs will often underperform in the clinic because they are biased toward untreated individuals. While our paper focuses on drug treatments, we note that our novel framework can characterize the genetic basis of any covariate's effect, including sex/gender, age, or modifiable risk factors.

An interesting finding is PCSK9—an LDL cholesterol-lowering drug target, which we observed to have a stronger effect in statin users than non-users (Figure 3A). This interaction effect did not replicate in our longitudinal study, which could be due to insufficient power in this study, or due to endogeneity in our discovery analysis. There is a possibility of endogeneity bias because PCSK9 has a strong effect on baseline LDL cholesterol (supplemental note). On the other hand, known facts about PCSK9 make it an interesting candidate for a statin pharmacogene: (1) loss-of-function and gain-of-function variants in PCSK9 are known to reduce and elevate LDL cholesterol levels, respectively,<sup>86,87</sup> and (2) statin therapy has been shown to increase serum PCSK9 levels, which can buffer statin LDL cholesterol-lowering effects.<sup>84,87</sup> Furthermore, a genetic study<sup>88</sup> identified loss-of-function variants associated with improved LDL cholesterol response to statins. However, the strongest association reported in this study was



**Figure 3. Gene-statin interaction effect sizes for low-density lipoprotein cholesterol, hemoglobin A1c, and blood glucose**

(A) Estimated effect sizes of selected genes on LDL cholesterol in statin users and non-users and from a standard additive model. Color boxes depict standard errors around effect size estimates. Reported  $p$  values  $P_{\{G \times E\}}$  are for the gene-statin interaction effects. The top 10 genes have significant interaction effects; for comparison, the bottom three genes are only additively significant.

(B and C) Same as (A), but for A1c and blood glucose. See also Figures S5 and S7.

estimated with just three carriers, and the effect of a loss-of-function variant is easier to predict than the combined effect of small and moderate effect variants, which we studied. A more recent genetic study<sup>89</sup> reported variants with statin-dependent effects on PCSK9 levels, and stronger causal effects of PCSK9 on LDL cholesterol in statin non-users compared to statin users. This is in line with our result. However, this study evaluated statin interactions on small preselected sets of variants and suffered similar limitations as ours in regards to observational data.

Importantly, our results identify an unappreciated limitation of the clinical use of PGSs, which are systematically less predictive in treated individuals than healthy controls. This complements other known limitations of PGSs, including limited transferability across socio-economic status, age, sex,<sup>90,91</sup> and ancestry,<sup>92,93</sup> which could also be driven in part by gene-environment interactions.<sup>94</sup> On the other hand, our results pave a path to developing context-specific PGSs that incorporate context-specific genetic effects, which could directly predict an individual's response to common drugs by the difference between their on-drug PGS and their off-drug PGS.

### Limitations of the study

Our study has several limitations. First, it has focused on the UK Biobank, which is a cross-sectional cohort with non-random allocation of drugs. This raises the possibility of endogeneity biases causing false positives or false negatives, where our results reflect causes of drug prescription rather than its consequences. Nonetheless, we have validated many of our results in a longitudinal pharmacogenomic study, which took steps to reduce biases from dosing and baseline LDL cholesterol levels. Robust replication for one drug-outcome pair does not imply that our results will replicate for every such pair. Nonetheless, it is an important reassurance that our exploratory approach has value to partly recover longitudinal analyses. More importantly, for many traits, the results are inconsistent with simple endogeneity-driven biases because we observed both positive and negative interaction effects (supplemental note). A related limitation is that our cross-

sectional approach to estimate heritability provides only a lower bound to  $h^2_{\text{response}}$  (supplemental note). In the future, methods to formally account for such endogeneity would give more precise estimates of treatment response heritability. Second, large-scale projects, like the UK Biobank, measure many shallow phenotypes but often do not measure the most clinically relevant phenotypes for a specific study. For this study, for example, we were unable to extract relevant phenotypes to investigate statin-induced myopathy, and we were only able to extract proxies for the primary clinical measure of warfarin's effect (international normalized ratio<sup>95</sup>). If the number of drug users in a large biobank is relatively small, as in our warfarin study, bespoke small-scale studies can have more power to model genetic effects on drug response.<sup>96</sup> Third, biobanks often lack detailed information about drug dose for many or all participants. Our study in the UK Biobank did not account for drug dose, which is an important limitation, even though we were able to validate an important part of our discoveries in a pharmacogenomic study that did correct for it. Fourth, patients are often on multiple drugs simultaneously. Results of our secondary analysis, which excluded individuals on combinations of drugs considered in this study, showed high concordance with results of the primary analysis. However, more targeted studies can improve by including information about important drugs taken concurrently. Fifth, statistical genetic interactions need not reflect biochemical interactions between a gene and drug. This contrasts with large-effect pharmacogenomic genes, which typically encode enzymes that directly metabolize the drug. Sixth, the TxEWAS method is liable to detect genes or tissues that are merely correlated with causal genes of tissues. In the future, established TWAS methods to fine-map causal genes<sup>76</sup> or tissues<sup>97-99</sup> could be adapted to the TxEWAS setting. Seventh, due to biases in available data, we analyzed only individuals of European ancestry. For example, GxEMM requires tens of thousands of samples for robustness, and TxEWAS requires reference genomic data which currently is heavily biased to European ancestries.<sup>100</sup> More ancestrally diverse data are needed to obtain more generally applicable results. Nonetheless, we expect that our qualitative conclusions



**Table 3. Prediction accuracy of polygenic scores trained in drug users, non-users, and a 50:50 mixture of both agnostic to treatment status**

Training	Prediction accuracy (incremental $R^2$ [%] [SE])							
	Statins				Metformin			
	LDL cholesterol		A1c		LDL cholesterol		BMI	
	On drug	Off drug	On drug	Off drug	On drug	Off drug	On drug	Off drug
On drug	7.18 (0.30)	12.60 (0.36)	3.36 (0.23)	2.32 (0.18)	1.32 (0.37)	3.24 (0.54)	0.919 (0.286)	0.0040 (0.0592)
Off drug	7.98 (0.32)	14.87 (0.39)	2.56 (0.20)	5.79 (0.28)	2.75 (0.51)	5.43 (0.67)	0.041 (0.080)	0.0077 (0.0636)
Agnostic	5.86 (0.29)	10.49 (0.36)	2.60 (0.20)	3.75 (0.23)	2.25 (0.44)	5.00 (0.66)	0.255 (0.164)	0.0931 (0.1078)

See also [Table S9](#).

about the genetic architecture of treatment response will apply to all individuals. Eighth, since estimated heritability depends on the choice of covariates, and since our analyses always adjust for the main effect of the specific drug being tested, our estimates of  $h_{\text{hom}}^2$  for an outcome depend on the drug being tested. Similar issues apply to ordinary additive heritability estimates<sup>101</sup> (supplemental note, [Table S10](#)). Nonetheless, this does not affect our conclusions about  $h_{\text{response}}^2$ .

Despite these limitations, we provided evidence for substantial polygenic contributions to drug response and showed how large-scale cross-sectional studies like the UK Biobank can be used to estimate genetic effects on drug response. Although validation with randomized controlled trials is needed before drawing definitive conclusions about causal genetic effects on treatment response, our results demonstrate that cross-sectional data can generate compelling hypotheses on genetic modifiers and statistical predictions for treatment response. It is important, as advances in pharmacogenomics cannot be made with sole input from randomized controlled trials,<sup>24</sup> which have strict inclusion and exclusion criteria, cannot always be performed due to ethical issues and are limited to small sample sizes due to high cost. Based on these results, we envision that novel PGS approaches incorporating treatment information will provide actionable clinical guidelines for optimizing primary effects and minimizing harmful side effects of drugs.

#### RESOURCE AVAILABILITY

##### Lead contact

Further information and requests for resources should be directed to and will be fulfilled by the lead contact, Michal Sadowski ([michalsadowski@ucla.edu](mailto:michalsadowski@ucla.edu)).

##### Materials availability

This study did not generate new unique reagents.

##### Data and code availability

- This paper analyzes existing, publicly available data. These accession numbers for the datasets are listed in the key resources table.
- All original code has been deposited at [https://github.com/michalsad/txewas\\_scripts](https://github.com/michalsad/txewas_scripts) and is publicly available as of the date of publication. DOIs are listed in the key resources table.
- Any additional information required to reanalyze the data reported in this paper is available from the lead contact upon request.

#### ACKNOWLEDGMENTS

This research was conducted using the UK Biobank Resource under application 33127. We thank the participants of the UK Biobank for

making this work possible. This work was funded by the Chan Zuckerberg Initiative grant CZF2019-002449 and National Institutes of Health grants U01HG012079, R01MH125252, 1R01HG011345, R01ES029929, R01MH122688, and 2R01HG006399 to N.Z. and R35GM150822 and K25HL157603 to A.W.D.

#### AUTHOR CONTRIBUTIONS

Conceptualization, M.S., J.F.A., A.W.D., and N.Z.; methodology, M.S., J.M., A.W.D., and N.Z.; software, M.S., M.T., and A.W.D.; validation, T.H. and A.O.-O.; resources, M.T., T.H., A.O.-O., R.B., A.P., and N.C.; writing—original draft, M.S.; writing—review & editing, M.S., M.T., A.O.-O., R.B., S.S., A.W.D., and N.Z.; supervision, J.F.A., S.S., A.W.D., and N.Z.

#### DECLARATION OF INTERESTS

The authors declare no competing interests.

#### STAR★METHODS

Detailed methods are provided in the online version of this paper and include the following:

- [KEY RESOURCES TABLE](#)
- [METHOD DETAILS](#)
  - UK Biobank data
  - Heritability of treatment response
  - Genes responsible for variable drug response
  - Gene expression prediction models
  - Replication in a pharmacogenomic study
  - Implications for polygenic scores
  - Simulating polygenic scores
  - GWAS data
  - TWAS for LDL cholesterol levels
- [QUANTIFICATION AND STATISTICAL ANALYSIS](#)
  - General statistical analysis
  - Heritability estimation with GxEMM
  - Heritability estimation with GCTA
  - GxE tests with TxEWAS
  - Replication analysis
  - Pathway enrichment analysis

#### SUPPLEMENTAL INFORMATION

Supplemental information can be found online at <https://doi.org/10.1016/j.xgen.2024.100722>.

Received: February 28, 2024

Revised: June 24, 2024

Accepted: November 15, 2024

Published: December 4, 2024

REFERENCES

- Exner, D.V., Dries, D.L., Domanski, M.J., and Cohn, J.N. (2001). Lesser Response to Angiotensin-Converting-Enzyme Inhibitor Therapy in Black as Compared with White Patients with Left Ventricular Dysfunction. *N. Engl. J. Med.* 344, 1351–1357. <https://doi.org/10.1056/NEJM200105033441802>.
- Mega, J.L., Simon, T., Collet, J.-P., Anderson, J.L., Antman, E.M., Bliden, K., Cannon, C.P., Danchin, N., Giusti, B., Gurbel, P., et al. (2010). Reduced-Function CYP2C19 Genotype and Risk of Adverse Clinical Outcomes Among Patients Treated With Clopidogrel Predominantly for PCI: A Meta-analysis. *JAMA* 304, 1821–1830. <https://doi.org/10.1001/jama.2010.1543>.
- Riaz, N., Havel, J.J., Kendall, S.M., Makarov, V., Walsh, L.A., Desrichard, A., Weinhold, N., and Chan, T.A. (2016). Recurrent SERPINB3 and SERPINB4 mutations in patients who respond to anti-CTLA4 immunotherapy. *Nat. Genet.* 48, 1327–1329. <https://doi.org/10.1038/ng.3677>.
- Pirmohamed, M. (2014). Personalized Pharmacogenomics: Predicting Efficacy and Adverse Drug Reactions. *Annu. Rev. Genom. Hum. Genet.* 15, 349–370. <https://doi.org/10.1146/annurev-genom-090413-025419>.
- Spear, B.B., Heath-Chiozzi, M., and Huff, J. (2001). Clinical application of pharmacogenetics. *Trends Mol. Med.* 7, 201–204. [https://doi.org/10.1016/S1471-4914\(01\)01986-4](https://doi.org/10.1016/S1471-4914(01)01986-4).
- Lazarou, J., Pomeranz, B.H., and Corey, P.N. (1998). Incidence of Adverse Drug Reactions in Hospitalized Patients: A Meta-analysis of Prospective Studies. *JAMA* 279, 1200–1205. <https://doi.org/10.1001/jama.279.15.1200>.
- Burke, W. (2002). Genetic Testing. *N. Engl. J. Med.* 347, 1867–1875. <https://doi.org/10.1056/NEJMoa012113>.
- Evans, W.E., and Relling, M.V. (2004). Moving towards individualized medicine with pharmacogenomics. *Nature* 429, 464–468. <https://doi.org/10.1038/nature02626>.
- Jameson, J.L., and Longo, D.L. (2015). Precision Medicine — Personalized, Problematic, and Promising. *N. Engl. J. Med.* 372, 2229–2234. <https://doi.org/10.1056/NEJMs1503104>.
- Grossman, D.C., Larson, E.B., and Sox, H.C. (2020). Integrating Personalized Medicine With Population Health Management: The Path Forward. *JAMA* 324, 631–632. <https://doi.org/10.1001/jama.2020.1406>.
- Wilkinson, G.R. (2005). Drug Metabolism and Variability among Patients in Drug Response. *N. Engl. J. Med.* 352, 2211–2221. <https://doi.org/10.1056/NEJMra032424>.
- Nebert, D.W., and Russell, D.W. (2002). Clinical importance of the cytochromes P450. *Lancet* 360, 1155–1162. [https://doi.org/10.1016/S0140-6736\(02\)11203-7](https://doi.org/10.1016/S0140-6736(02)11203-7).
- SEARCH Collaborative Group; Link, E., Parish, S., Armitage, J., Bowman, L., Heath, S., Matsuda, F., Gut, I., Lathrop, M., and Collins, R. (2008). SLC01B1 Variants and Statin-Induced Myopathy — A Genomewide Study. *N. Engl. J. Med.* 359, 789–799. <https://doi.org/10.1056/NEJMoa0801936>.
- Schwarz, U.I., Ritchie, M.D., Bradford, Y., Li, C., Dudek, S.M., Frye-Ander-son, A., Kim, R.B., Roden, D.M., and Stein, C.M. (2008). Genetic Determinants of Response to Warfarin during Initial Anticoagulation. *N. Engl. J. Med.* 358, 999–1008. <https://doi.org/10.1056/NEJMoa0708078>.
- Mallal, S., Phillips, E., Carosi, G., Molina, J.M., Workman, C., Tomažič, J., Jägel-Guedes, E., Rugina, S., Kozyrev, O., Cid, J.F., et al. (2008). HLA-B\*5701 Screening for Hypersensitivity to Abacavir. *N. Engl. J. Med.* 358, 568–579. <https://doi.org/10.1056/NEJMoa0706135>.
- McCormack, M., Alfirevic, A., Bourgeois, S., Farrell, J.J., Kasperaviciūtė, D., Carrington, M., Sills, G.J., Marson, T., Jia, X., de Bakker, P.I.W., et al. (2011). HLA-A\*3101 and Carbamazepine-Induced Hypersensitivity Reactions in Europeans. *N. Engl. J. Med.* 364, 1134–1143. <https://doi.org/10.1056/NEJMoa1013297>.
- Chen, P., Lin, J.J., Lu, C.S., Ong, C.T., Hsieh, P.F., Yang, C.C., Tai, C.T., Wu, S.L., Lu, C.H., Hsu, Y.C., et al. (2011). Carbamazepine-Induced Toxic Effects and HLA-B\*1502 Screening in Taiwan. *N. Engl. J. Med.* 364, 1126–1133. <https://doi.org/10.1056/NEJMoa1009717>.
- Tutt, A.N.J., Garber, J.E., Kaufman, B., Viale, G., Fumagalli, D., Rastogi, P., Gelber, R.D., de Azambuja, E., Fielding, A., Balmaña, J., et al. (2021). Adjuvant olaparib for patients with BRCA1-or BRCA2-mutated breast cancer. *N. Engl. J. Med.* 384, 2394–2405. <https://doi.org/10.1056/NEJMoa2105215>.
- (2022). Lynparza approved in the EU as adjuvant treatment for patients with germline BRCA-mutated HER2-negative high-risk early breast cancer. <https://www.astrazeneca.com/media-centre/press-releases/2022/lynparza-approved-in-eu-for-early-breast-cancer.html>.
- Pirmohamed, M., Burnside, G., Eriksson, N., Jorgensen, A.L., Toh, C.H., Nicholson, T., Kesteven, P., Christersson, C., Wahlström, B., Stafberg, C., et al. (2013). A Randomized Trial of Genotype-Guided Dosing of Warfarin. *N. Engl. J. Med.* 369, 2294–2303. <https://doi.org/10.1056/NEJMoa1311386>.
- Roberts, J.D., Wells, G.A., Le May, M.R., Labinaz, M., Glover, C., Froeschl, M., Dick, A., Marquis, J.-F., O'Brien, E., Goncalves, S., et al. (2012). Point-of-care genetic testing for personalisation of antiplatelet treatment (RAPID GENE): a prospective, randomised, proof-of-concept trial. *Lancet* 379, 1705–1711. [https://doi.org/10.1016/S0140-6736\(12\)60161-5](https://doi.org/10.1016/S0140-6736(12)60161-5).
- Swen, J.J., van der Wouden, C.H., Manson, L.E., Abdullah-Koolmees, H., Blagec, K., Blagus, T., Böhringer, S., Cambon-Thomsen, A., Cecchin, E., Cheung, K.-C., et al. (2023). A 12-gene pharmacogenetic panel to prevent adverse drug reactions: an open-label, multicentre, controlled, cluster-randomised crossover implementation study. *Lancet* 401, 347–356. [https://doi.org/10.1016/S0140-6736\(22\)01841-4](https://doi.org/10.1016/S0140-6736(22)01841-4).
- Mushiroda, T., Takahashi, Y., Onuma, T., Yamamoto, Y., Kamei, T., Hoshida, T., Takeuchi, K., Otsuka, K., Okazaki, M., Watanabe, M., et al. (2018). Association of HLA-A\*31:01 Screening With the Incidence of Carbamazepine-Induced Cutaneous Adverse Reactions in a Japanese Population. *JAMA Neurol.* 75, 842–849. <https://doi.org/10.1001/jama-neurol.2018.0278>.
- Pirmohamed, M. (2023). Pharmacogenomics: current status and future perspectives. *Nat. Rev. Genet.* 24, 350–362. <https://doi.org/10.1038/s41576-022-00572-8>.
- Nelson, M.R., Johnson, T., Warren, L., Hughes, A.R., Chisoe, S.L., Xu, C.-F., and Waterworth, D.M. (2016). The genetics of drug efficacy: opportunities and challenges. *Nat. Rev. Genet.* 17, 197–206. <https://doi.org/10.1038/nrg.2016.12>.
- Relling, M.V., and Klein, T.E. (2011). CPIC: Clinical Pharmacogenetics Implementation Consortium of the Pharmacogenomics Research Network. *Clin. Pharmacol. Ther.* 89, 464–467. <https://doi.org/10.1038/clpt.2010.279>.
- Shuldiner, A.R., O'Connell, J.R., Bliden, K.P., Gandhi, A., Ryan, K., Hor-enstein, R.B., Damcott, C.M., Pakyz, R., Tantry, U.S., Gibson, Q., et al. (2009). Association of Cytochrome P450 2C19 Genotype With the Antiplatelet Effect and Clinical Efficacy of Clopidogrel Therapy. *JAMA* 302, 849–857. <https://doi.org/10.1001/jama.2009.1232>.
- Massey, J., Plant, D., Hyrich, K., Morgan, A.W., Wilson, A.G., Spiliopou-lou, A., Colombo, M., McKeigue, P., Isaacs, J., Cordell, H., et al. (2018). Genome-wide association study of response to tumour necrosis factor inhibitor therapy in rheumatoid arthritis. *Pharmacogenomics* 18, 657–664. <https://doi.org/10.1038/s41397-018-0040-6>.
- Linskey, D.W., Linskey, D.C., McLeod, H.L., and Luzum, J.A. (2021). The need to shift pharmacogenetic research from candidate gene to genome-wide association studies. *Pharmacogenomics* 22, 1143–1150. <https://doi.org/10.2217/pgs-2021-0108>.
- Muhammad, A., Aka, I.T., Birdwell, K.A., Gordon, A.S., Roden, D.M., Wei, W.-Q., Mosley, J.D., and Van Driest, S.L. (2021). Genome-Wide Approach to Measure Variant-Based Heritability of Drug Outcome

- Phenotypes. *Clin. Pharmacol. Ther.* 110, 714–722. <https://doi.org/10.1002/cpt.2323>.
31. Patel, A.P., and Khera, A.V. (2023). Advances and Applications of Polygenic Scores for Coronary Artery Disease. *Annu. Rev. Med.* 74, 141–154. <https://doi.org/10.1146/annurev-med-042921-112629>.
  32. Klarin, D., and Natarajan, P. (2022). Clinical utility of polygenic risk scores for coronary artery disease. *Nat. Rev. Cardiol.* 19, 291–301. <https://doi.org/10.1038/s41569-021-00638-w>.
  33. Wray, N.R., Lin, T., Austin, J., McGrath, J.J., Hickie, I.B., Murray, G.K., and Visscher, P.M. (2021). From Basic Science to Clinical Application of Polygenic Risk Scores: A Primer. *JAMA Psychiatr.* 78, 101–109. <https://doi.org/10.1001/jamapsychiatry.2020.3049>.
  34. Hao, L., Kraft, P., Berriz, G.F., Hynes, E.D., Koch, C., Korategere V Kumar, P., Parpattedar, S.S., Steeves, M., Yu, W., Antwi, A.A., et al. (2022). Development of a clinical polygenic risk score assay and reporting workflow. *Nat. Med.* 28, 1006–1013. <https://doi.org/10.1038/s41591-022-01767-6>.
  35. Adeyemo, A., Balaconis, M.K., Darnes, D.R., Fatumo, S., Granados Moreno, P., Hodonsky, C.J., Inouye, M., Kanai, M., Kato, K., Knoppers, B.M., et al. (2021). Responsible use of polygenic risk scores in the clinic: potential benefits, risks and gaps. *Nat. Med.* 27, 1876–1884. <https://doi.org/10.1038/s41591-021-01549-6>.
  36. Khera, A.V., Chaffin, M., Aragam, K.G., Haas, M.E., Roselli, C., Choi, S.H., Natarajan, P., Lander, E.S., Lubitz, S.A., Ellinor, P.T., and Kathiresan, S. (2018). Genome-wide polygenic scores for common diseases identify individuals with risk equivalent to monogenic mutations. *Nat. Genet.* 50, 1219–1224. <https://doi.org/10.1038/s41588-018-0183-z>.
  37. Mavaddat, N., Michailidou, K., Dennis, J., Lush, M., Fachal, L., Lee, A., Tyrer, J.P., Chen, T.-H., Wang, Q., Bolla, M.K., et al. (2019). Polygenic Risk Scores for Prediction of Breast Cancer and Breast Cancer Subtypes. *Am. J. Hum. Genet.* 104, 21–34. <https://doi.org/10.1016/j.ajhg.2018.11.002>.
  38. Khera, A.V., Emdin, C.A., Drake, I., Natarajan, P., Bick, A.G., Cook, N.R., Chasman, D.I., Baber, U., Mehran, R., Rader, D.J., et al. (2016). Genetic Risk, Adherence to a Healthy Lifestyle, and Coronary Disease. *N. Engl. J. Med.* 375, 2349–2358. <https://doi.org/10.1056/NEJMoa1605086>.
  39. Hindy, G., Aragam, K.G., Ng, K., Chaffin, M., Lotta, L.A., Baras, A., Regeneron Genetics Center; Drake, I., Orho-Melander, M., Melander, O., et al. (2020). Genome-Wide Polygenic Score, Clinical Risk Factors, and Long-Term Trajectories of Coronary Artery Disease. *Arterioscler. Thromb. Vasc. Biol.* 40, 2738–2746. <https://doi.org/10.1161/ATVBAHA.120.314856>.
  40. Lanfear, D.E., Luzum, J.A., She, R., Gui, H., Donahue, M.P., O'Connor, C.M., Adams, K.F., Sanders-van Wijk, S., Zeld, N., Maeder, M.T., et al. (2020). Polygenic Score for  $\beta$ -Blocker Survival Benefit in European Ancestry Patients With Reduced Ejection Fraction Heart Failure. *Circ. Heart Fail.* 13, e007012. <https://doi.org/10.1161/CIRCHEARTFAILURE.119.007012>.
  41. Lanfear, D.E., Luzum, J.A., She, R., Li, J., Sabbah, H.N., Zeld, N., Liu, B., Peterson, E., and Keoki Williams, L. (2023). Validation of a Polygenic Score for Beta-Blocker Survival Benefit in Patients With Heart Failure Using the United Kingdom Biobank. *Circ Genom Precis Med.* 16, e003835. <https://doi.org/10.1161/CIRCGEN.121.003835>.
  42. Oni-Orisan, A., Tuteja, S., Hoffecker, G., Smith, D.M., Castrichini, M., Crews, K.R., Murphy, W.A., Nguyen, N.H.K., Huang, Y., Lteif, C., et al. (2023). An Introductory Tutorial on Cardiovascular Pharmacogenetics for Healthcare Providers. *Clin. Pharmacol. Ther.* 114, 275–287. <https://doi.org/10.1002/cpt.2957>.
  43. Hunter, D.J., and Drazen, J.M. (2019). Has the Genome Granted Our Wish Yet? *N. Engl. J. Med.* 380, 2391–2393. <https://doi.org/10.1056/NEJMp1904511>.
  44. International Consortium on Lithium Genetics ConLi+Gen; Amare, A.T., Schubert, K.O., Hou, L., Clark, S.R., Papiol, S., Heilbronner, U., Degenhardt, F., Tekola-Ayele, F., Hsu, Y.H., et al. (2018). Association of Polygenic Score for Schizophrenia and HLA Antigen and Inflammation Genes With Response to Lithium in Bipolar Affective Disorder: A Genome-Wide Association Study. *JAMA Psychiatr.* 75, 65–74. <https://doi.org/10.1001/jamapsychiatry.2017.3433>.
  45. Sigström, R., Kowalec, K., Jonsson, L., Clements, C.C., Karlsson, R., Nordenskjöld, A., Pålsson, E., Sullivan, P.F., and Landén, M. (2022). Association Between Polygenic Risk Scores and Outcome of ECT. *Am. J. Psychiatr.* 179, 844–852. <https://doi.org/10.1176/appi.ajp.22010045>.
  46. Oni-Orisan, A., Hoffmann, T.J., Ranatunga, D., Medina, M.W., Jorgenson, E., Schaefer, C., Krauss, R.M., Iribarren, C., and Risch, N. (2018). Characterization of Statin Low-Density Lipoprotein Cholesterol Dose-Response Using Electronic Health Records in a Large Population-Based Cohort. *Circ Genom Precis Med.* 11, e002043. <https://doi.org/10.1161/CIRCGEN.117.002043>.
  47. Oni-Orisan, A., Haldar, T., Ranatunga, D.K., Medina, M.W., Schaefer, C., Krauss, R.M., Iribarren, C., Risch, N., and Hoffmann, T.J. (2020). The impact of adjusting for baseline in pharmacogenomic genome-wide association studies of quantitative change. *NPJ Genom. Med.* 5, 1. <https://doi.org/10.1038/s41525-019-0109-4>.
  48. Border, R., Athanasiadis, G., Buil, A., Schork, A.J., Cai, N., Young, A.I., Werge, T., Flint, J., Kendler, K.S., Sankararaman, S., et al. (2022). Cross-trait assortative mating is widespread and inflates genetic correlation estimates. *Science* 378, 754–761. <https://doi.org/10.1126/science.abo2059>.
  49. Stone, N.J., Robinson, J.G., Lichtenstein, A.H., Bairey Merz, C.N., Blum, C.B., Eckel, R.H., Goldberg, A.C., Gordon, D., Levy, D., Lloyd-Jones, D.M., et al. (2014). 2013 ACC/AHA Guideline on the Treatment of Blood Cholesterol to Reduce Atherosclerotic Cardiovascular Risk in Adults: A Report of the American College of Cardiology/American Heart Association Task Force on Practice Guidelines. *J. Am. Coll. Cardiol.* 63, 2889–2934. <https://doi.org/10.1016/j.jacc.2013.11.002>.
  50. Chou, R., Cantor, A., Dana, T., Wagner, J., Ahmed, A.Y., Fu, R., and Ferencik, M. (2022). Statin Use for the Primary Prevention of Cardiovascular Disease in Adults: Updated Evidence Report and Systematic Review for the US Preventive Services Task Force. *JAMA* 328, 754–771. <https://doi.org/10.1001/jama.2022.12138>.
  51. Sattar, N., Preiss, D., Murray, H.M., Welsh, P., Buckley, B.M., de Craen, A.J.M., Seshasai, S.R.K., McMurray, J.J., Freeman, D.J., Jukema, J.W., et al. (2010). Statins and risk of incident diabetes: a collaborative meta-analysis of randomised statin trials. *Lancet* 375, 735–742. [https://doi.org/10.1016/S0140-6736\(09\)61965-6](https://doi.org/10.1016/S0140-6736(09)61965-6).
  52. Corrao, G., Ibrahim, B., Nicotra, F., Soranna, D., Merlino, L., Catapano, A.L., Tragni, E., Casula, M., Grassi, G., and Mancia, G. (2014). Statins and the Risk of Diabetes: Evidence From a Large Population-Based Cohort Study. *Diabetes Care* 37, 2225–2232. <https://doi.org/10.2337/dc13-2215>.
  53. Preiss, D., Seshasai, S.R.K., Welsh, P., Murphy, S.A., Ho, J.E., Waters, D.D., DeMicco, D.A., Barter, P., Cannon, C.P., Sabatine, M.S., et al. (2011). Risk of Incident Diabetes With Intensive-Dose Compared With Moderate-Dose Statin Therapy: A Meta-analysis. *JAMA* 305, 2556–2564. <https://doi.org/10.1001/jama.2011.860>.
  54. Collins, R., Reith, C., Emberson, J., Armitage, J., Baigent, C., Blackwell, L., Blumenthal, R., Danesh, J., Smith, G.D., DeMets, D., et al. (2016). Interpretation of the evidence for the efficacy and safety of statin therapy. *Lancet* 388, 2532–2561. [https://doi.org/10.1016/S0140-6736\(16\)31357-5](https://doi.org/10.1016/S0140-6736(16)31357-5).
  55. UK Prospective Diabetes Study (UKPDS) Group (1998). Effect of intensive blood-glucose control with metformin on complications in overweight patients with type 2 diabetes (UKPDS 34). *Lancet* 352, 854–865. [https://doi.org/10.1016/S0140-6736\(98\)07037-8](https://doi.org/10.1016/S0140-6736(98)07037-8).
  56. UK Prospective Diabetes Study (UKPDS) Group (1998). United Kingdom Prospective Diabetes Study 24: A 6-Year, Randomized, Controlled Trial Comparing Sulfonylurea, Insulin, and Metformin Therapy in Patients with Newly Diagnosed Type 2 Diabetes That Could Not Be Controlled

- with Diet Therapy. *Ann. Intern. Med.* 128, 165–175. <https://doi.org/10.7326/0003-4819-128-3-199802010-00001>.
57. Maruthur, N.M., Tseng, E., Hutffless, S., Wilson, L.M., Suarez-Cuervo, C., Berger, Z., Chu, Y., Lyoha, E., Segal, J.B., and Bolen, S. (2016). Diabetes medications as monotherapy or metformin-based combination therapy for type 2 diabetes: a systematic review and meta-analysis. *Ann. Intern. Med.* 164, 740–751. <https://doi.org/10.7326/M15-2650>.
  58. Ma, T., Tian, X., Zhang, B., Li, M., Wang, Y., Yang, C., Wu, J., Wei, X., Qu, Q., Yu, Y., et al. (2022). Low-dose metformin targets the lysosomal AMPK pathway through PEN2. *Nature* 603, 159–165. <https://doi.org/10.1038/s41586-022-04431-8>.
  59. Lachin, J.M., Christophi, C.A., Edelstein, S.L., Ehrmann, D.A., Hamman, R.F., Kahn, S.E., Knowler, W.C., and Nathan, D.M.; DDK Research Group (2007). Factors Associated With Diabetes Onset During Metformin Versus Placebo Therapy in the Diabetes Prevention Program. *Diabetes* 56, 1153–1159. <https://doi.org/10.2337/db06-0918>.
  60. Coll, A.P., Chen, M., Taskar, P., Rimmington, D., Patel, S., Tadross, J.A., Cimino, I., Yang, M., Welsh, P., Virtue, S., et al. (2020). GDF15 mediates the effects of metformin on body weight and energy balance. *Nature* 578, 444–448. <https://doi.org/10.1038/s41586-019-1911-y>.
  61. DeFronzo, R.A., and Goodman, A.M. (1995). Efficacy of metformin in patients with non-insulin-dependent diabetes mellitus. *N. Engl. J. Med.* 333, 541–549. <https://doi.org/10.1056/NEJM199508313330902>.
  62. Bhat, A., Sebastiani, G., and Bhat, M. (2015). Systematic review: Preventive and therapeutic applications of metformin in liver disease. *World J. Hepatol.* 7, 1652–1659. <https://doi.org/10.4254/wjh.v7.i12.1652>.
  63. Daly, A.K., and King, B.P. (2003). Pharmacogenetics of oral anticoagulants. *Pharmacogenetics* 13, 247–252. <https://doi.org/10.1097/01.pgc.0000054071.64000.bd>.
  64. Landefeld, C.S., and Beyth, R.J. (1993). Anticoagulant-related bleeding: Clinical epidemiology, prediction, and prevention. *Am. J. Med.* 95, 315–328. [https://doi.org/10.1016/0002-9343\(93\)90285-W](https://doi.org/10.1016/0002-9343(93)90285-W).
  65. Loebstein, R., Yonath, H., Peleg, D., Almog, S., Rotenberg, M., Lubetsky, A., Roitelman, J., Harats, D., Halkin, H., and Ezra, D. (2001). Interindividual variability in sensitivity to warfarin—Nature or nurture? *Clin. Pharmacol. Ther.* 70, 159–164. <https://doi.org/10.1067/mcp.2001.117444>.
  66. Lopez-Olivo, M.A., Siddhanamatha, H.R., Shea, B., Tugwell, P., Wells, G.A., and Suarez-Almazor, M.E. (2014). Methotrexate for treating rheumatoid arthritis. *Cochrane Database of Systematic Reviews* g, q. <https://doi.org/10.1002/14651858.CD000957.pub2>.
  67. Salliot, C., and van der Heijde, D. (2009). Long-term safety of methotrexate monotherapy in patients with rheumatoid arthritis: a systematic literature research. *Ann. Rheum. Dis.* 68, 1100–1104. <https://doi.org/10.1136/ard.2008.093690>.
  68. Dahl, A., Nguyen, K., Cai, N., Gandal, M.J., Flint, J., and Zaitlen, N. (2020). A Robust Method Uncovers Significant Context-Specific Heritability in Diverse Complex Traits. *Am. J. Hum. Genet.* 106, 71–91. <https://doi.org/10.1016/j.ajhg.2019.11.015>.
  69. Gamazon, E.R., Wheeler, H.E., Shah, K.P., Mozaffari, S.V., Aquino-Michaels, K., Carroll, R.J., Eyler, A.E., Denny, J.C., GTEx Consortium; and Nicolae, D.L., et al. (2015). A gene-based association method for mapping traits using reference transcriptome data. *Nat. Genet.* 47, 1091–1098. <https://doi.org/10.1038/ng.3367>.
  70. Gusev, A., Ko, A., Shi, H., Bhatia, G., Chung, W., Penninx, B.W.J.H., Jansen, R., de Geus, E.J.C., Boomsma, D.I., Wright, F.A., et al. (2016). Integrative approaches for large-scale transcriptome-wide association studies. *Nat. Genet.* 48, 245–252. <https://doi.org/10.1038/ng.3506>.
  71. Almlj, L.M., Duncan, R., Feng, H., Ghosh, D., Binder, E.B., Bradley, B., Ressler, K.J., Conneely, K.N., and Epstein, M.P. (2014). Correcting Systematic Inflation in Genetic Association Tests That Consider Interaction Effects: Application to a Genome-wide Association Study of Posttraumatic Stress Disorder. *JAMA Psychiatr.* 71, 1392–1399. <https://doi.org/10.1001/jamapsychiatry.2014.1339>.
  72. Peterson, C.B., Bogomolov, M., Benjamini, Y., and Sabatti, C. (2016). TreeQTL: hierarchical error control for eQTL findings. *Bioinformatics* 32, 2556–2558. <https://doi.org/10.1093/bioinformatics/btw198>.
  73. Peterson, C.B., Bogomolov, M., Benjamini, Y., and Sabatti, C. (2016). Many Phenotypes Without Many False Discoveries: Error Controlling Strategies for Multitrait Association Studies. *Genet. Epidemiol.* 40, 45–56. <https://doi.org/10.1002/gepi.21942>.
  74. Sollis, E., Mosaku, A., Abid, A., Buniello, A., Cerezo, M., Gil, L., Groza, T., Güneş, O., Hall, P., Hayhurst, J., et al. (2023). The NHGRI-EBI GWAS Catalog: knowledgebase and deposition resource. *Nucleic Acids Res.* 51, D977–D985. <https://doi.org/10.1093/nar/gkac1010>.
  75. Kamburov, A., Pentchev, K., Galicka, H., Wierling, C., Lehrach, H., and Herwig, R. (2011). ConsensusPathDB: toward a more complete picture of cell biology. *Nucleic Acids Res.* 39, D712–D717. <https://doi.org/10.1093/nar/gkq1156>.
  76. Mancuso, N., Freund, M.K., Johnson, R., Shi, H., Kichaev, G., Gusev, A., and Pasaniuc, B. (2019). Probabilistic fine-mapping of transcriptome-wide association studies. *Nat. Genet.* 51, 675–682. <https://doi.org/10.1038/s41588-019-0367-1>.
  77. Yamada, Y., and Seino, Y. (2004). Physiology of GIP - A Lesson from GIP Receptor Knockout Mice. *Horm. Metab. Res.* 36, 771–774. <https://doi.org/10.1055/s-2004-826162>.
  78. Ono, S., Suzuki, Y., Fukui, N., Sugai, T., Watanabe, J., Tsuneyama, N., and Someya, T. (2012). Association between the GIPR gene and the insulin level after glucose loading in schizophrenia patients treated with olanzapine. *Pharmacogenomics J.* 12, 507–512. <https://doi.org/10.1038/tj.2011.28>.
  79. Ogawa, C., Tsuchiya, K., Tomosugi, N., and Maeda, K. (2020). A Hypoxia-Inducible Factor Stabilizer Improves Hematopoiesis and Iron Metabolism Early after Administration to Treat Anemia in Hemodialysis Patients. *Int. J. Mol. Sci.* 21, 7153. <https://doi.org/10.3390/ijms21197153>.
  80. Karvas, R.M., Yang, Y., Ezashi, T., Schust, D.J., Roberts, R.M., and Schulz, L.C. (2018). ITGA1 is upregulated in response to oxygen over time in a BMP4 model of trophoblast. *Mol. Reprod. Dev.* 85, 738–739. <https://doi.org/10.1002/mrd.23047>.
  81. Clausnitzer, M., Cho, J.H., Collins, R., Cox, N.J., Dermitzakis, E.T., Hurles, M.E., Kathiresan, S., Kenny, E.E., Lindgren, C.M., MacArthur, D.G., et al. (2020). A brief history of human disease genetics. *Nature* 577, 179–189. <https://doi.org/10.1038/s41586-019-1879-7>.
  82. Marderstein, A.R., Kulm, S., Peng, C., Tamimi, R., Clark, A.G., and Elemento, O. (2021). A polygenic-score-based approach for identification of gene-drug interactions stratifying breast cancer risk. *Am. J. Hum. Genet.* 108, 1752–1764. <https://doi.org/10.1016/j.ajhg.2021.07.008>.
  83. Medina, M.W., Gao, F., Ruan, W., Rotter, J.I., and Krauss, R.M. (2008). Alternative Splicing of 3-Hydroxy-3-Methylglutaryl Coenzyme A Reductase Is Associated With Plasma Low-Density Lipoprotein Cholesterol Response to Simvastatin. *Circulation* 118, 355–362. <https://doi.org/10.1161/CIRCULATIONAHA.108.773267>.
  84. Taylor, B.A., and Thompson, P.D. (2016). Statins and Their Effect on PCSK9—Impact and Clinical Relevance. *Curr. Atherosclerosis Rep.* 18, 46. <https://doi.org/10.1007/s11883-016-0604-3>.
  85. Gallego-Colon, E., Daum, A., and Yosefy, C. (2020). Statins and PCSK9 inhibitors: A new lipid-lowering therapy. *Eur. J. Pharmacol.* 878, 173114. <https://doi.org/10.1016/j.ejphar.2020.173114>.
  86. Ference, B.A., Robinson, J.G., Brook, R.D., Catapano, A.L., Chapman, M.J., Neff, D.R., Voros, S., Giugliano, R.P., Davey Smith, G., Fazio, S., and Sabatine, M.S. (2016). Variation in PCSK9 and HMGCR and Risk of Cardiovascular Disease and Diabetes. *N. Engl. J. Med.* 375, 2144–2153. <https://doi.org/10.1056/NEJMoa1604304>.
  87. Horton, J.D., Cohen, J.C., and Hobbs, H.H. (2007). Molecular biology of PCSK9: its role in LDL metabolism. *Trends Biochem. Sci.* 32, 71–77. <https://doi.org/10.1016/j.tibs.2006.12.008>.

88. Feng, Q., Wei, W.Q., Chung, C.P., Levinson, R.T., Bastarache, L., Denny, J.C., and Stein, C.M. (2017). The effect of genetic variation in PCSK9 on the LDL-cholesterol response to statin therapy. *Pharmacogenomics J.* 17, 204–208. <https://doi.org/10.1038/tpj.2016.3>.
89. Pott, J., Kheirkhah, A., Gadin, J.R., Kleber, M.E., Delgado, G.E., Kirsten, H., Forer, L., Hauck, S.M., Burkhardt, R., Scharnagl, H., et al. (2024). Sex and statin-related genetic associations at the PCSK9 gene locus: results of genome-wide association meta-analysis. *Biol. Sex Differ.* 15, 26. <https://doi.org/10.1186/s13293-024-00602-6>.
90. Mostafavi, H., Harpak, A., Agarwal, I., Conley, D., Pritchard, J.K., and Przeworski, M. (2020). Variable prediction accuracy of polygenic scores within an ancestry group. *Elife* 9, e48376. <https://doi.org/10.7554/eLife.48376>.
91. Zhu, C., Ming, M.J., Cole, J.M., Edge, M.D., Kirkpatrick, M., and Harpak, A. (2023). Amplification is the primary mode of gene-by-sex interaction in complex human traits. *Cell Genom.* 3, 100297. <https://doi.org/10.1016/j.xgen.2023.100297>.
92. Privé, F., Aschard, H., Carmi, S., Folkersen, L., Hoggart, C., O'Reilly, P.F., and Vilhjálmsdóttir, B.J. (2022). Portability of 245 polygenic scores when derived from the UK Biobank and applied to 9 ancestry groups from the same cohort. *Am. J. Hum. Genet.* 109, 12–23. <https://doi.org/10.1016/j.ajhg.2021.11.008>.
93. Martin, A.R., Kanai, M., Kamatani, Y., Okada, Y., Neale, B.M., and Daly, M.J. (2019). Clinical use of current polygenic risk scores may exacerbate health disparities. *Nat. Genet.* 51, 584–591. <https://doi.org/10.1038/s41588-019-0379-x>.
94. Pazokitoroudi, A., Liu, Z., Dahl, A., Zaitlen, N., Rosset, S., and Sankaranarayanan, S. (2024). A scalable and robust variance components method reveals insights into the architecture of gene-environment interactions underlying complex traits. *Am. J. Hum. Genet.* 111, 1462–1480. <https://doi.org/10.1016/j.ajhg.2024.05.015>.
95. Magnús Haraldsson, H., Öundurason, P.T., Einarisdóttir, K.A., Guðmundsdóttir, B.R., Pétursson, M.K., Pálsson, K., and Kristinsson, Á. (1997). Performance of Prothrombin-Proconvertin Time as a Monitoring Test of Oral Anticoagulation Therapy. *Am. J. Clin. Pathol.* 107, 672–680. <https://doi.org/10.1093/ajcp/107.6.672>.
96. Aquilante, C.L., Langae, T.Y., Lopez, L.M., Yarandi, H.N., Tromberg, J.S., Mouchy, D., Gaston, K.L., Waddell, C.D., Chirico, M.J., and Johnson, J.A. (2006). Influence of coagulation factor, vitamin K epoxide reductase complex subunit 1, and cytochrome P450 2C9 gene polymorphisms on warfarin dose requirements. *Clin. Pharmacol. Ther.* 79, 291–302. <https://doi.org/10.1016/j.clpt.2005.11.011>.
97. Zhou, D., Jiang, Y., Zhong, X., Cox, N.J., Liu, C., and Gamazon, E.R. (2020). A unified framework for joint-tissue transcriptome-wide association and Mendelian randomization analysis. *Nat. Genet.* 52, 1239–1246. <https://doi.org/10.1038/s41588-020-0706-2>.
98. Thompson, M., Gordon, M.G., Lu, A., Tandon, A., Halperin, E., Gusev, A., Ye, C.J., Balliu, B., and Zaitlen, N. (2022). Multi-context genetic modeling of transcriptional regulation resolves novel disease loci. *Nat. Commun.* 13, 5704. <https://doi.org/10.1038/s41467-022-33212-0>.
99. Hu, Y., Li, M., Lu, Q., Weng, H., Wang, J., Zekavat, S.M., Yu, Z., Li, B., Gu, J., Muchnik, S., et al. (2019). A statistical framework for cross-tissue transcriptome-wide association analysis. *Nat. Genet.* 51, 568–576. <https://doi.org/10.1038/s41588-019-0345-7>.
100. Bhattacharya, A., García-Closas, M., Olshan, A.F., Perou, C.M., Troester, M.A., and Love, M.I. (2020). A framework for transcriptome-wide association studies in breast cancer in diverse study populations. *Genome Biol.* 21, 42. <https://doi.org/10.1186/s13059-020-1942-6>.
101. Weissbrod, O., Flint, J., and Rosset, S. (2018). Estimating SNP-Based Heritability and Genetic Correlation in Case-Control Studies Directly and with Summary Statistics. *Am. J. Hum. Genet.* 103, 89–99. <https://doi.org/10.1016/j.ajhg.2018.06.002>.
102. Barber, M.J., Mangravite, L.M., Hyde, C.L., Chasman, D.I., Smith, J.D., McCarty, C.A., Li, X., Wilke, R.A., Rieder, M.J., Williams, P.T., et al. (2010). Genome-Wide Association of Lipid-Lowering Response to Statins in Combined Study Populations. *PLoS One* 5, e9763. <https://doi.org/10.1371/journal.pone.0009763>.
103. Chasman, D.I., Giulianini, F., MacFadyen, J., Barratt, B.J., Nyberg, F., and Ridker, P.M. (2012). Genetic determinants of statin-induced low-density lipoprotein cholesterol reduction: the Justification for the Use of Statins in Prevention: an Intervention Trial Evaluating Rosuvastatin (JUPITER) trial. *Circ. Cardiovasc. Genet.* 5, 257–264. <https://doi.org/10.1161/CIRCGENETICS.111.961144>.
104. Deshmukh, H.A., Colhoun, H.M., Johnson, T., McKeigue, P.M., Betteridge, D.J., Durrington, P.N., Fuller, J.H., Livingstone, S., Charlton-Menys, V., Neil, A., et al. (2012). Genome-wide association study of genetic determinants of LDL-c response to atorvastatin therapy: importance of Lp(a). *J. Lipid Res.* 53, 1000–1011. <https://doi.org/10.1194/jlr.P021113>.
105. Postmus, I., Trompet, S., Deshmukh, H.A., Barnes, M.R., Li, X., Warren, H.R., Chasman, D.I., Zhou, K., Arsenault, B.J., Donnelly, L.A., et al. (2014). Pharmacogenetic meta-analysis of genome-wide association studies of LDL cholesterol response to statins. *Nat. Commun.* 5, 5068. <https://doi.org/10.1038/ncomms6068>.
106. Hagberg, A.A., Schult, D.A., and Swart, P.J. (2008). Exploring Network Structure, Dynamics, and Function Using NetworkX (Los Alamos National Laboratory (LANL)).
107. Privé, F., Aschard, H., Ziyatdinov, A., and Blum, M.G.B. (2018). Efficient analysis of large-scale genome-wide data with two R packages: bigstatsr and bigsnpr. *Bioinformatics* 34, 2781–2787. <https://doi.org/10.1093/bioinformatics/bty185>.
108. Privé, F., Aschard, H., and Blum, M.G.B. (2019). Efficient Implementation of Penalized Regression for Genetic Risk Prediction. *Genetics* 212, 65–74. <https://doi.org/10.1534/genetics.119.302019>.
109. Yang, J., Lee, S.H., Goddard, M.E., and Visscher, P.M. (2011). GCTA: A Tool for Genome-wide Complex Trait Analysis. *Am. J. Hum. Genet.* 88, 76–82. <https://doi.org/10.1016/j.ajhg.2010.11.011>.
110. Zeileis, A., Köll, S., and Graham, N. (2020). Various versatile variances: an object-oriented implementation of clustered covariances in R. *J. Stat. Software* 95, 1–36. <https://doi.org/10.18637/jss.v095.i01>.
111. Zeileis, A. (2004). Econometric Computing with HC and HAC Covariance Matrix Estimators. *J. Statistical Software* 11, 1–17. <https://doi.org/10.18637/jss.v011.i10>.
112. Bycroft, C., Freeman, C., Petkova, D., Band, G., Elliott, L.T., Sharp, K., Motyer, A., Vukcevic, D., Delaneau, O., O'Connell, J., et al. (2018). The UK Biobank resource with deep phenotyping and genomic data. *Nature* 562, 203–209. <https://doi.org/10.1038/s41586-018-0579-z>.
113. GTEx Consortium; Ardlie, K.G., Deluca, D.S., Segrè, A.V., Sullivan, T.J., Young, T.R., Gelfand, E.T., Trowbridge, C.A., Maller, J.B., Tukiainen, T., et al. (2015). The Genotype-Tissue Expression (GTEx) pilot analysis: multitissue gene regulation in humans. *Science* 348, 648–660. <https://doi.org/10.1126/science.1262110>.
114. Thompson, D.J., Wells, D., Selzam, S., Peneva, I., Moore, R., Sharp, K., Tarran, W.A., Beard, E.J., Riveros-Mckay, F., Giner-Delgado, C., et al. (2024). A systematic evaluation of the performance and properties of the UK Biobank Polygenic Risk Score (PRS) Release. *PLoS One* 19, e0307270. <https://doi.org/10.1371/journal.pone.0307270>.
115. Yuan, S., Burgess, S., Laffan, M., Mason, A.M., Dichgans, M., Gill, D., and Larsson, S.C. (2021). Genetically Proxied Inhibition of Coagulation Factors and Risk of Cardiovascular Disease: A Mendelian Randomization Study. *J. Am. Heart Assoc.* 10, e019644. <https://doi.org/10.1161/JAHA.120.019644>.
116. Hivert, V., Sidorenko, J., Rohart, F., Goddard, M.E., Yang, J., Wray, N.R., Yengo, L., and Visscher, P.M. (2021). Estimation of non-additive genetic variance in human complex traits from a large sample of unrelated individuals. *Am. J. Hum. Genet.* 108, 786–798. <https://doi.org/10.1016/j.ajhg.2021.02.014>.

117. Cornelis, M.C., Tchetgen, E.J.T., Liang, L., Qi, L., Chatterjee, N., Hu, F.B., and Kraft, P. (2012). Gene-Environment Interactions in Genome-Wide Association Studies: A Comparative Study of Tests Applied to Empirical Studies of Type 2 Diabetes. *Am. J. Epidemiol.* 175, 191–202. <https://doi.org/10.1093/aje/kwr368>.
118. Tchetgen, E.J.T., and Kraft, P. (2011). On the Robustness of Tests of Genetic Associations Incorporating Gene-environment Interaction When the Environmental Exposure is Misspecified. *Epidemiology* 22, 257–261. <https://doi.org/10.1097/EDE.0b013e31820877c5>.
119. Flutre, T., Wen, X., Pritchard, J., and Stephens, M. (2013). A Statistical Framework for Joint eQTL Analysis in Multiple Tissues. *PLoS Genet.* 9, e1003486. <https://doi.org/10.1371/journal.pgen.1003486>.
120. Wheeler, H.E., Shah, K.P., Brenner, J., Garcia, T., Aquino-Michaels, K., GTEx Consortium; Cox, N.J., Nicolae, D.L., and Im, H.K. (2016). Survey of the Heritability and Sparse Architecture of Gene Expression Traits across Human Tissues. *PLoS Genet.* 12, e1006423. <https://doi.org/10.1371/journal.pgen.1006423>.

STAR★METHODS

KEY RESOURCES TABLE

REAGENT or RESOURCE	SOURCE	IDENTIFIER
<b>Deposited data</b>		
UK Biobank Resource	UK Biobank	<a href="https://www.ukbiobank.ac.uk/">https://www.ukbiobank.ac.uk/</a>
Response to statins (LDL cholesterol percent change) GWAS summary statistics	Oni-Orisan et al. <sup>46,47</sup>	GWAS Catalog: GCST009821
GTEx (context-by-context) eQTL weights	Thompson et al. <sup>98</sup>	<a href="http://gusevlab.org/projects/fusion/#multi-context-content-expression">http://gusevlab.org/projects/fusion/#multi-context-content-expression</a>
LDL cholesterol change in response to statin therapy GWAS associations	Oni-Orisan et al., <sup>47</sup> Barber et al., <sup>102</sup> Chasman et al., <sup>103</sup> Deshmukh et al., <sup>104</sup> Postmus et al. <sup>105</sup>	GWAS Catalog: GCST010338, GCST009821, GCST000635, GCST001408, GCST001425, GCST002675
LDL cholesterol levels GWAS associations	Sollis et al. <sup>74</sup>	GWAS Catalog: GCST90002412, GCST008238, GCST008593, GCST90010364, GCST90179477, GCST90025954, GCST90134520, GCST007204, GCST90092883, GCST90255425, GCST90102272, GCST90255492, GCST011683, GCST007141, GCST004541, GCST007131, GCST010245, GCST011417, GCST010204, GCST009757, GCST008990, GCST000234, GCST000866, GCST007442, GCST007689, GCST90319533, GCST003361, GCST006004, GCST008988, GCST90239612, GCST90278638, GCST90278111, GCST90292747, GCST90293039, GCST90140947, GCST90244006, GCST90104175, GCST90134487, GCST90134501, GCST90134504, GCST000131, GCST000151, GCST000134, GCST000283, GCST003303, GCST003216, GCST001645, GCST008935, GCST90019512, GCST90319696, GCST90101741, GCST90101745, GCST009043, GCST000132, GCST006612, GCST90079033, GCST90018961, GCST90018741, GCST90296607, GCST008037, GCST000807, GCST000975, GCST000287, GCST000282, GCST004920, GCST90090990, GCST011347, GCST007848, GCST002898, GCST003662, GCST004233, GCST004236, GCST90244653, GCST008077, GCST000759, GCST002222, GCST002220, GCST009147, GCST009150, GCST008676, GCST90255506, GCST90255507, GCST90255505, GCST90239655, GCST90239659, GCST90239660, GCST90239658, GCST90239656, GCST90239657
<b>Software and algorithms</b>		
TxEWAS	this paper	<a href="https://doi.org/10.5281/zenodo.12192083">https://doi.org/10.5281/zenodo.12192083</a>
GxEMM	Dahl et al. <sup>68</sup>	<a href="https://github.com/andywdahl/gxemm">https://github.com/andywdahl/gxemm</a>
NetworkX	Hagberg et al. <sup>106</sup>	<a href="https://github.com/networkx/networkx">https://github.com/networkx/networkx</a>
bigstatsr	Prive et al. <sup>107,108</sup>	<a href="https://privefl.github.io/bigstatsr">https://privefl.github.io/bigstatsr</a>
GCTA	Yang et al. <sup>109</sup>	<a href="https://yanglab.westlake.edu.cn/software/gcta">https://yanglab.westlake.edu.cn/software/gcta</a>
sandwich	Zeileis et al. <sup>110,111</sup>	<a href="https://sandwich.r-forge.r-project.org">https://sandwich.r-forge.r-project.org</a>
TreeQTL	Peterson et al. <sup>72,73</sup>	<a href="http://bioinformatics.org/treeqtl">http://bioinformatics.org/treeqtl</a>
FUSION	Gusev et al. <sup>70</sup>	<a href="http://gusevlab.org/projects/fusion">http://gusevlab.org/projects/fusion</a>
ConsensusPathDB	Kamburov et al. <sup>75</sup>	<a href="http://cpdb.molgen.mpg.de">http://cpdb.molgen.mpg.de</a>

## METHOD DETAILS

### UK Biobank data

Analyses presented in this work were performed in the UK Biobank population of 342,257 unrelated white British individuals.

#### Samples

The 342,257 unrelated white British individuals were identified by performing the following steps. From among 488,363 UK Biobank participants, we retained putative “White British” individuals using field 22006–0.0 ( $n = 409,692$ ). We then filtered out 199 individuals with excess genotype missingness ( $>0.05$ ), 312 individuals with a mismatch between self-reported and genetic sex, 999 individuals with excess heterozygosity ( $\geq 5$  standard deviations above the mean), and 90 individuals who requested their data be redacted. We then removed 629 individuals related to ten or more individuals (KING coefficient  $\geq 2^{-9/2}$ ) as a preprocessing step to the application of the maximal\_independent\_set algorithm implemented in the NetworkX Python package.<sup>106</sup>

In contrast to Bycroft et al.,<sup>112</sup> who estimated kinships using approximately 92,000 common SNPs with small loadings onto the first few principal components (PCs) in the full sample (including multiple ancestries; see S3.7 of Bycroft et al.), we estimated kinships using 561,780 common SNPs in a sample of European ancestry individuals. The close relatives the UK Biobank identified in field 22021–0.0 are a subset of our more conservative approach: we identified all 81,218 related individuals in this subsample identified by the UK Biobank plus an additional 3,261 not identified by Bycroft et al.

#### Genotypes

For heritability and PGS analyses, we used 579,566 UK Biobank variants with minor allele frequency (MAF) larger than 0.01, Hardy-Weinberg equilibrium (HWE) test  $p$  value below  $10^{-10}$ , and imputation INFO score of 1. For the TxEWAS analysis, UK Biobank SNPs that matched eQTLs trained in the GTEx consortium<sup>113</sup> were used.

#### Phenotypes

Individuals who take statins were identified by UK Biobank field 20003-0.0-47 using the following codes: 1140861958, 1140861970, 1141146138, 1140888594, 1140888648, 1140910632, 1140910654, 1141146234, 1141192410, 1141192414, 1141188146, 1140881748 and 1140864592. There were 56,169 such subjects within the UK Biobank population of 342,257 unrelated white British individuals. Individuals who take metformin ( $n = 8,606$ ) were identified by codes 1140884600 and 1141189090 in the same UK Biobank field. Warfarin users ( $n = 3,753$ ) were identified by codes 1140888266 and 1140910832; and methotrexate users ( $n = 1,865$ ) by codes 1140869848 and 1140910036.

LDL cholesterol, glucose, A1c, BMI, hematocrit, plateletcrit, reticulocyte count and C-reactive protein levels were retrieved from UK Biobank fields 30780–0.0, 30740–0.0, 30750–0.0, 21001–0.0, 30030–0.0, 30090–0.0, 30240–0.0 and 30710–0.0, respectively.

C-reactive protein levels were inverse normally transformed before fitting the models. For other traits, we discarded measurements greater than five standard deviations from the mean, with the assumption that such extreme levels were results of non-modeled circumstances.

CVD was defined as in Thompson et al.<sup>114</sup> The T2D disease status and the VTE status were extracted from the UK Biobank EHRs. The former was defined using ICD10 code E11. The latter, using ICD10 codes I26, I80.1, I80.2, I81 and I82.0, and OPCS procedure code L90.2.<sup>115</sup> For testing associations with drug use, we only retained diagnoses recorded after the date of the initial assessment with the UK Biobank initiative (when the information about medication use was collected), which resulted in 29,393 (278,675), 18,193 (297,399), 7,356 (332,403) cases (controls) for CVD, T2D and VTE, respectively.

#### Covariates

The main analyses reported in this work were performed using the following covariates: age, sex, birth date, Townsend deprivation index, and the first 16 genetic PCs.<sup>92</sup> We additionally accounted for the measuring device type when an outcome required it, which was the case for hematocrit, plateletcrit, and reticulocyte count. All non-binary covariates were standardized (transformed to mean-zero, variance 1) before calculating interaction variables.

### Heritability of treatment response

GxEMM quantifies the heritability contributed by genome-wide additive effects and genome-wide GxE effects. The general GxEMM model for phenotype  $y$  of an individual  $i$  in environment  $k$  (i.e.,  $Z_i = k$ ) is:

$$y_i | Z_i = k \sim \sum_q X_{iq} \alpha_q + \sigma_{\text{hom}} \sum_s G_{is} \beta_s + \sqrt{v_k} \sum_s G_{is} \gamma_{sk} + \sqrt{w_k + \sigma_\epsilon^2} \epsilon_i$$

In this model,  $X$  are covariates (indexed by  $q$ ) with fixed effects  $\alpha$ , and  $G$  is a matrix of SNPs (indexed by  $s$ ), with additive effects  $\beta$ . We assume that  $\beta$  and the noise,  $\epsilon$ , are i.i.d. standard normal, and the additive heritability is determined by the genetic and noise variances,  $\sigma_{\text{hom}}^2$  and  $\sigma_\epsilon^2$ . GxEMM additionally captures SNP-environment interaction effects,  $\gamma$ , which are also assumed i.i.d. standard normal. Further, GxEMM allows environment-specific genetic ( $v_k$ ) and noise ( $w_k$ ) variances. If the phenotype is scaled to variance 1,  $\sigma_{\text{hom}}^2 = h_{\text{hom}}^2$ .



Here, we use treatment status as the “environment” in order to quantify the heritability due to treatment-specific effects. We approximate the heritability of treatment response,  $\Delta y_i = y_i(Z_i = 1) - y_i(Z_i = 0)$ , by:

$$h_{\text{response}}^2 := \frac{V_0 + V_1}{V_0 + V_1 + W_0 + W_1} \leq \frac{V_0 + V_1}{V_0 + V_1 + W_0 + W_1 - 2W_{01}} = h^2(\Delta y)$$

where  $w_{01}$  captures the covariance in effect sizes for unmodeled risk factors between treated/untreated states (Supplemental Note).

For warfarin, methotrexate, and metformin, we studied a sample of 30,000 individuals that included all users of that drug and an accordingly-sized random draw of non-users. To assess stability of our results, we repeated the analysis five times by randomly re-sampling non-users, and reported results from the sample with median additive heritability ( $h_{\text{hom}}^2$ , Figure S9). Because statins are much more common, we instead randomly split all 342,257 individuals into 11 non-overlapping subsets and meta-analyzed the results. This is a common approach employed in biobank-scale datasets to reduce computational complexity.<sup>116</sup>

### Genes responsible for variable drug response

TxEWAS extends the transcriptome-wide association study (TWAS<sup>69,70</sup>) framework to test gene-environment interactions. The TxEWAS framework involves two major steps: First, gene expression levels of each gene are genetically imputed using a reference dataset. Second, the interaction effect,  $\gamma$ , between imputed gene expression and the drug is tested in the regression model:

$$y_i = \beta_0 + \sum_j \beta_1 X_{ij} + \sum_j \beta_2 Z_i X_{ij} + \sum_j \beta_3 g_i X_{ij} + \beta_4 g_i + \beta_5 Z_i + \gamma g_i Z_i + \epsilon_i,$$

where  $\epsilon_i \sim \mathcal{N}(0, \sigma^2)$ ;  $Z_i$  and  $g_i$  are the drug use indicator and imputed expression of some gene for individual  $i$ , respectively, and  $X$  is a matrix of covariates.

For binary phenotypes, the interaction effect is tested in the logistic regression model with the same covariates (Supplemental Note). In both models, the variance of the effect size estimates is estimated with the sandwich variance estimator to control for heteroskedasticity and/or misspecification of the functional form of the environmental factor<sup>117,118</sup> (Figure S1, Supplemental Note).

In this study, we imputed gene expression into the UK Biobank using 48 tissues from the GTEx consortium, and we used hierarchical FDR<sup>72,73</sup> (hFDR < 10%) to account for multiple hypothesis testing across genes and tissues. Hierarchical FDR has been shown to properly control the false discovery rate across contexts when there are multiple hypothesis tests being run for a given group, in this case, a gene.<sup>72,73,119</sup> It also boosts power in cases where a gene has a significant association in multiple contexts. Finally, since TxEWAS is liable to detect genes that are merely correlated with the causal gene due to the genetic LD structure in the proximity of the causal gene, we define TxEWAS association loci by adding consecutive genes until there is no gene within 500 kb from the last added gene.

### Gene expression prediction models

In TxEWAS, gene expression (or rather its genetic component) is imputed as a linear combination of genetic variants (SNPs). The coefficients used for the imputation are referred to as “weights” or “eQTL weights” and are calculated on a per-gene basis by fitting a linear model of gene expression onto the gene’s *cis*-genotypes in an external reference dataset. We fit each model using the elastic net, as it has been found to be the most robust across a wide range of genetic architectures.<sup>120</sup> We used package bigstatsr<sup>107</sup> to fit each model using 10-fold cross-validation, and after determining whether the expression of a gene was significantly predicted using *cis*-genotypes at a nominal  $p$  value of 0.05, we retrained the model using the entire set of individuals to generate a final set of weights. The weights has been deposited at <http://gusevlab.org/projects/fusion/#multi-context-content-expression> under the “GTEx (context-by-context)” download link.

### Replication in a pharmacogenomic study

We initially discovered gene-drug associations in cross-sectional data using TxEWAS. To validate these discoveries, we performed an ordinary TWAS on the change in LDL cholesterol after statin initiation in an external pharmacogenomic study (we term this analysis PGx TWAS, Table S11). More concretely, we used data from a longitudinal study of 28,616 individuals with European ancestries from the Kaiser Permanente GERA cohort (Genetic Epidemiology Research on Adult Health and Aging).<sup>46,47</sup> In this study, the phenotype was rigorously characterized utilizing electronic health records, and the analysis was adjusted for carefully selected covariates. For every TxEWAS interacting gene identified in the UK Biobank cohort, we calculated the PGx TWAS statistic in all available GTEx tissues, and employed an hFDR correction to call statistically significant genes at FDR < 10%.

### Implications for polygenic scores

PGSs are weighted sums of risk alleles optimized to predict some training dataset. This makes PGSs depend on characteristics of the training data, such as ancestry,<sup>93</sup> age,<sup>90</sup> or sex.<sup>91</sup> We assessed the accuracy of PGSs as a function of drug use, including PGSs trained in users and tested in non-users and vice-versa. In the main analysis, we varied the proportion of individuals on a drug in the training cohort, keeping the sample size fixed. We evaluated additional scenarios in the Supplemental Note. We fit PGSs using a fast implementation of penalized linear regression with the lasso penalty<sup>92,108</sup> and we measured prediction accuracy by the incremental  $R^2$  over baseline covariates. Standard errors around the estimates were calculated using bootstrap.

### Simulating polygenic scores

We performed realistic simulations to examine two scenarios observed in real data. Scenario 1 mimicked statin-LDL, where “on” genetic effects are buffered to be half the size of “off” effects. As expected, we found that training a PGS in “off” individuals is optimal regardless of the test set (Table S8). Scenario 2 mimicked statin-A1c, where “on” and “off” effects are highly correlated but vary randomly in magnitude. As expected, we found that training a PGS in training samples matching the test samples is optimal in this scenario. These simulations show how prediction accuracy of a PGS depends on the genetic correlation and heritability between the train and test dataset and explain the discordant results for statins’ effects on A1c and LDL cholesterol (Table S9). In both cases, we simulated the unexposed population to have 40% heritability. In the exposed population, we either (Scenario 1) divided all genetic effect sizes by two, reflecting systemic buffering of the unexposed effects, or (Scenario 2) randomly deflated (with probability 0.4) or inflated (with probability 0.6) each individual genetic effect by a random fraction between 0.2 and 1. We then performed PGS analyses as in the real data by varying the distribution of drug use in the train and test populations.

### GWAS data

GWAS associations with LDL cholesterol change in response to statin therapy, and LDL cholesterol levels were collected from the NHGRI-EBI GWAS Catalog<sup>74</sup> on 04/17/2024.

Associations with LDL cholesterol change in response to statin therapy were identified using the following names of traits: “Response to statin therapy”, “Response to statins (LDL cholesterol change)”, “Response to statins (LDL cholesterol percent change)”.<sup>102–105</sup>

Associations with LDL cholesterol levels were identified using the following names of traits: “LDL cholesterol levels”, “Low-density lipoprotein cholesterol levels”, “Direct low-density lipoprotein cholesterol levels”, “LDL cholesterol”, “Direct low-density lipoprotein levels (UKB data field 30780)”.

Only associations that reached the genome-wide significance level of  $p$  value  $< 5 \times 10^{-8}$  were considered. For gene-level comparisons, lists of associated genes were created for each of the above phenotypes by taking the union of the “reported genes” and “mapped genes” columns of a given summary table.

### TWAS for LDL cholesterol levels

TWAS for LDL cholesterol levels was performed in the UK Biobank analogously to the TxEWAS for statins’ association with LDL cholesterol (see above), only no interaction terms were included in the model. TWAS tests were performed in 48 tissues from the GTEx consortium, and significant genes were called at  $hFDR < 10\%$ .

## QUANTIFICATION AND STATISTICAL ANALYSIS

### General statistical analysis

Unless otherwise specified, all analyses were conducted using custom scripts implemented in the R programming language.

### Heritability estimation with GxEMM

GxEMM heritability estimates and their standard errors were calculated using the GxEMM package.<sup>68</sup> Specifically, we fit the GxEMM’s Free model using REML.  $p$  values for  $h^2_{\text{response}}$  were obtained by testing for non-additive heritability, i.e., by testing whether the off-drug ( $v_0$ ) and on-drug ( $v_1$ ) genetic variances are both zero. Because GxEMM does not scale to the whole UK Biobank, we perform meta-analysis across 11 non-overlapping subsets of data (method details). More specifically, we use inverse variance weighting to meta-analyze heritabilities and Fisher’s method to meta-analyze  $p$  values.

### Heritability estimation with GCTA

Estimates of the additive heritability and their standard errors reported in Table S3 were calculated using the GCTA software.<sup>109</sup> Sample sizes of metformin users who were not statin users were: 1,584 for LDL cholesterol, 1,337 for A1c, and 1,243 for blood glucose. Sample sizes of the rest of the drug user groups were matched to those available for users of statins and metformin: 6,572 for LDL cholesterol, 5,800 for A1c, and 5,157 for blood glucose.

Estimates of the additive heritability and their standard errors reported in Table S10 were calculated using the GCTA software. Similarly to GxEMM, GCTA only scales up to tens of thousands samples. Thus, for the analyses that did not include drug use as covariates or included statin use (which has high frequency of  $\sim 16\%$  in our dataset), we randomly split all 342,257 individuals into 11 non-overlapping subsets and meta-analyzed the results, as described above for GxEMM. For the analyses which included metformin use as a covariate, we estimated the additive heritability in a sample of 30,000 individuals that included all users of the drug and an accordingly-sized random draw of non-users. As in the corresponding GxEMM analysis, we repeated the analysis five times by randomly resampling non-users, and reported results from the sample with median estimate.

### GxE tests with TxEWAS

The TxEWAS model of a continuous response is fitted using R’s `lm()` function, and the model of a binary response using the `glm()` function with the parameter family = “binomial” and logit link function. For both models, robust standard errors are calculated using

White's estimator implemented in the `vcovHC()` function from R package `sandwich`.<sup>110,111</sup>  $p$  values are obtained from a two-sided Wald test. Hierarchical FDR correction from package `TreeQTL`<sup>72,73</sup> is applied to  $p$  values across genes tested for multiple tissues, and significant genes are called at 10% FDR.

### Replication analysis

TWAS on summary statistics from our replication pharmacogenomic study ([method details](#)) was performed using FUSION<sup>70</sup> and the LD reference data for individuals of European ancestry provided with the software. The LD reference was calculated based on genotypes from the 1000 Genomes Project, which provided fewer SNPs than the UK Biobank. As a result, FUSION could not build expression models for some of the genes that were identified with TxEWAS using the individual-level UK Biobank data. This is why, in the main analysis, we report replication rate relative to 155 genes, and not all 156 genes identified in the statin-LDL TxEWAS.

### Pathway enrichment analysis

All pathway enrichment analyses presented in this work were performed with ConsensusPathDB.<sup>75</sup>