

UC Davis

UC Davis Previously Published Works

Title

Correction: Surveying the spatial distribution of feral sorghum (*Sorghum bicolor* L.) and its sympatry with johnsongrass (*S. halepense*) in South Texas

Permalink

<https://escholarship.org/uc/item/5177c40x>

Journal

PLOS ONE, 13(7)

ISSN

1932-6203

Authors

Ohadi, Sara
Littlejohn, Matthew
Mesgaran, Mohsen
[et al.](#)

Publication Date

2018

DOI

10.1371/journal.pone.0200984

Copyright Information

This work is made available under the terms of a Creative Commons Attribution License, available at <https://creativecommons.org/licenses/by/4.0/>

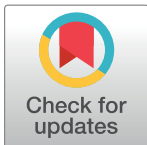
Peer reviewed

CORRECTION

Correction: Surveying the spatial distribution of feral sorghum (*Sorghum bicolor* L.) and its sympatry with johnsongrass (*S. halepense*) in South Texas

Sara Ohadi, Matthew Littlejohn, Mohsen Mesgaran, William Rooney, Muthukumar Bagavathiannan

In the Author Contributions section, Mohsen Mesgaran (MM) should be listed as one of the persons who contributed to Writing–review & editing.



 OPEN ACCESS

Citation: Ohadi S, Littlejohn M, Mesgaran M, Rooney W, Bagavathiannan M (2018) Correction: Surveying the spatial distribution of feral sorghum (*Sorghum bicolor* L.) and its sympatry with johnsongrass (*S. halepense*) in South Texas. PLoS ONE 13(7): e0200984. <https://doi.org/10.1371/journal.pone.0200984>

Published: July 16, 2018

Copyright: © 2018 Ohadi et al. This is an open access article distributed under the terms of the [Creative Commons Attribution License](https://creativecommons.org/licenses/by/4.0/), which permits unrestricted use, distribution, and reproduction in any medium, provided the original author and source are credited.

The legends for Figs 4 and 5 are incorrectly switched. Please see the correct Figs 4 and 5 here.

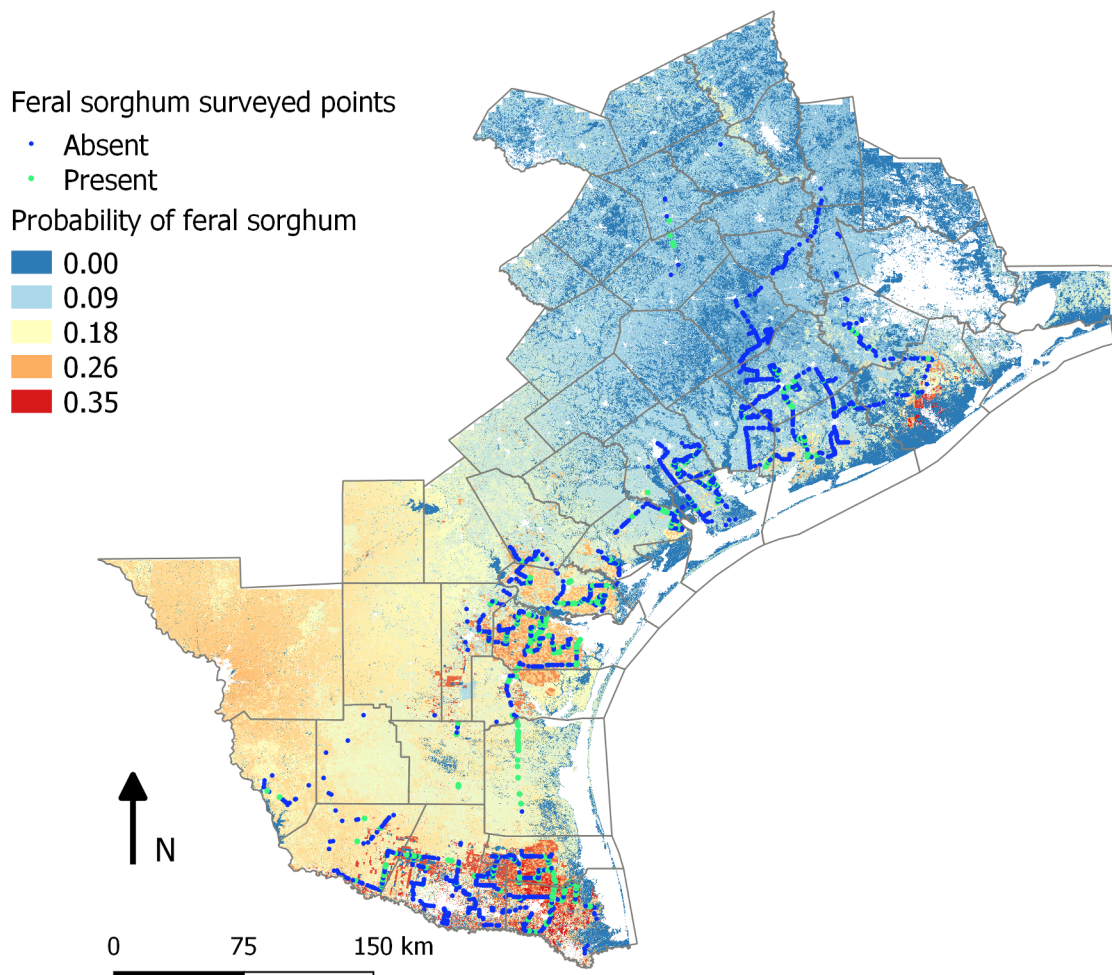


Fig 4. Map representing the probability of feral sorghum occurrence based on the nearby land use and johnsongrass habitat suitability.

<https://doi.org/10.1371/journal.pone.0200984.g001>



Fig 5. Example of a feral sorghum-johnsongrass complex site along a roadside near Corpus Christi, TX.

<https://doi.org/10.1371/journal.pone.0200984.g002>

Reference

1. Ohadi S, Littlejohn M, Mesgaran M, Rooney W, Bagavathiannan M (2018) Surveying the spatial distribution of feral sorghum (*Sorghum bicolor* L.) and its sympatry with johnsongrass (*S. halepense*) in South Texas. PLoS ONE 13(4): e0195511. <https://doi.org/10.1371/journal.pone.0195511> PMID: 29698426