

# UC Berkeley

## UC Berkeley Previously Published Works

### Title

Chirality switching of an antiferromagnetic spiral wall and its effect on magnetic anisotropy

### Permalink

<https://escholarship.org/uc/item/5265j390>

### Journal

Physical Review Materials, 3(11)

### ISSN

2476-0455

### Authors

Li, Q  
Yang, M  
N'Diaye, AT  
[et al.](#)

### Publication Date

2019-11-01

### DOI

10.1103/physrevmaterials.3.114415

Peer reviewed

# Chirality switching of an antiferromagnetic spiral wall and its effect on magnetic anisotropy

Q. Li,<sup>1</sup> M. Yang,<sup>1</sup> A. T. N'Diaye,<sup>2</sup> C. Klewe,<sup>2</sup> P. Shafer,<sup>2</sup> N. Gao,<sup>1</sup> T. Y. Wang,<sup>1</sup> E. Arenholz,<sup>3</sup> Xixiang Zhang,<sup>4</sup>

C. Hwang,<sup>5</sup> J. Li,<sup>6,\*</sup> and Z. Q. Qiu<sup>1,†</sup>

<sup>1</sup>Department of Physics, University of California at Berkeley, Berkeley, California 94720, USA

<sup>2</sup>Advanced Light Source, Lawrence Berkeley National Laboratory, Berkeley, California 94720, USA

<sup>3</sup>Cornell High Energy Synchrotron Source, Cornell University, Ithaca, New York 14853, USA

<sup>4</sup>Physical Science and Engineering Division (PSE), King Abdullah University of Science and Technology (KAUST), Thuwal 23955-6900, Saudi Arabia

<sup>5</sup>Korea Research Institute of Standards and Science, Yuseong, Daejeon 305-340, Korea

<sup>6</sup>International Center for Quantum Materials, School of Physics, Peking University, Beijing 100871, China

An antiferromagnetic NiO spiral wall in Fe/NiO/Co<sub>0.5</sub>Ni<sub>0.5</sub>O/vicinal Ag(001) was created by rotating Fe magnetization and investigated using x-ray magnetic linear dichroism (XMLD). Different from the Mauri's 180° spiral wall, we find that the NiO spiral wall always switches its chirality at ~90° rotation of the Fe magnetization, and unwinds the spiral wall back to a single domain with a further rotation of the Fe magnetization from 90° to 180°. The effect of this chirality switching on the magnetic anisotropy was studied using rotational magneto-optic Kerr effect (ROTMOKE) on Py/NiO/Co<sub>0.5</sub>Ni<sub>0.5</sub>O/vicinal Ag(001). We find that the original Mauri's model has to be corrected by an energy folding due to the chirality switching, which consequently converts the exchange bias from the Mauri's 180° spiral wall into a uniaxial anisotropy and a negative fourfold anisotropy.

A ferromagnetic (FM)/antiferromagnetic (AFM) system is one of the most interesting magnetic systems because of the induced exchange bias and magnetic anisotropy in the FM layer [1–3]. The key issue of this subject is how the AFM spins respond to the FM magnetization reversal and subsequently affect the FM layer properties? Despite the great progress in terms of material expansion [4] and measurement scale [5], there exist many ambiguous issues mostly due to the lack of a direct measurement of the AFM spins so that most studies have to assume certain AFM spin configurations [6–10]. This difficulty is overcome partially by the development of x-ray magnetic linear dichroism (XMLD) [11] which could probe AFM spins in certain AFM single crystalline films. For example, it has been believed for a long time that exchange bias comes only from FM/AFM interfacial coupling [12] until it was shown that the exchange bias actually depends on AFM bulk spins [13–15] and could even be dominated by AFM defects [16]. This mystery was resolved by XMLD measurement which shows that exchange bias is associated only with a small amount of pinned uncompensated AFM spins [17] which could have a wide distribution from the FM/AFM interface to the bulk AFM layer [18]. In contrast,

the majority compensated AFM spins, depending on their rotatable or frozen nature [19], are responsible for different types of the magnetic anisotropies in the FM layer [20,21]. Regarding the key question of how the AFM spins respond to the FM magnetization reversal, the most mysterious issue concerns the so-called Mauri's model in which FM/AFM interfacial

\*Corresponding author: jiali83@pku.edu.cn

†Corresponding author: qiu@berkeley.edu

coupling is presumed to twist the AFM spins into a 180° spiral wall during the FM magnetization reversal and subsequently creates an exchange bias [22]. In theory, Mauri's model has encountered the difficulty of AFM interfacial spin frustrations [23,24], and should lead to a zero exchange bias in the limit of perfect spin compensation [25]. In experiment, a recent XMLD measurement challenges the Mauri's 180° spiral wall structure by showing that the AFM spiral wall winds up only to 90°, then switches its chirality, and unwinds the wall from 90° to 180° rotation of the FM magnetization [26]. Noticing that Mauri's model has been applied to a FM/AFM system over three decades, the absence of the Mauri's 180° wall raises an urgent question about whether the Mauri's model needs a correction by the chirality switching of the AFM spiral wall in order to appropriately describe the FM overlayer? To answer this question, we carried out an experimental study on FM/NiO/Co<sub>0.5</sub>Ni<sub>0.5</sub>O/vicinal Ag(001). By rotating the FM magnetization, we revealed the NiO spiral wall structure by XMLD measurement and studied the corresponding magnetic anisotropies of the FM layer by rotation magneto-optic Kerr effect (ROTMOKE).

A 10 mm × 10 mm vicinal (6° angle) Ag(001) with steps

parallel to [110] axis [Fig. 1(a)] was cleaned in an ultrahigh vacuum system by cycles of Ar ion sputtering at 2 keV and annealing at 500 °C. An 8-nm Co<sub>0.5</sub>Ni<sub>0.5</sub>O film was grown by coevaporating Co and Ni at 200 °C substrate temperature and at an oxygen pressure of 2.0 × 10<sup>-6</sup> Torr, followed by an annealing at 450 °C for half an hour in an oxygen environment. Then a NiO wedge (0–18 nm) was deposited by moving the substrate behind a shutter [27] at the oxygen atmosphere of 2.0 × 10<sup>-6</sup> Torr at room temperature. A 1.5-nm Fe film was deposited on one half of the sample for

~

×

×

×

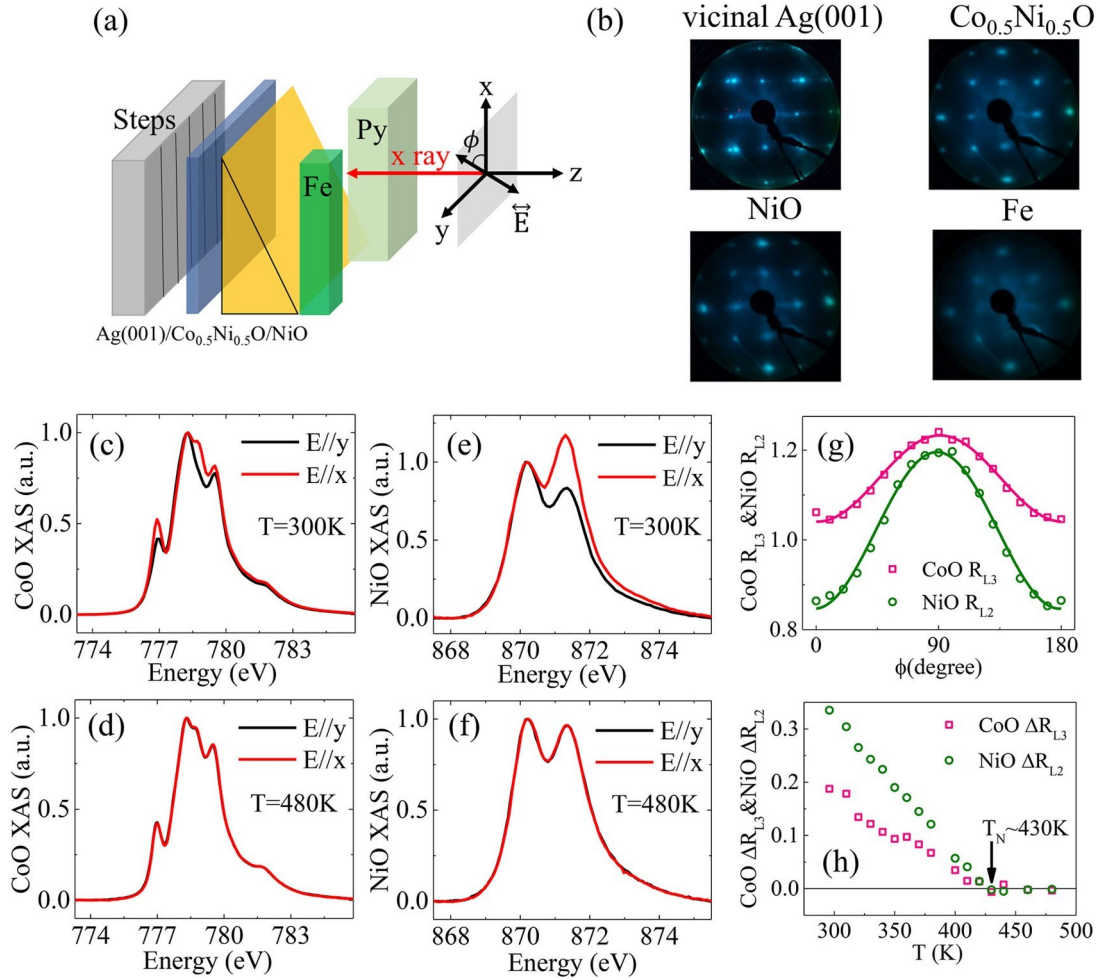


FIG. 1. (a) Schematic drawing of the sample and XMLD measurement. (b) LEED patterns of Fe(1.5 nm)/NiO(10 nm)/ $\text{Co}_{0.5}\text{Ni}_{0.5}\text{O}$ (8 nm)/ vicinal Ag(001). XAS from Fe(1.5 nm)/ $\text{Co}_{0.5}\text{Ni}_{0.5}\text{O}$ (8 nm)/vicinal Ag(001) with the x-ray polarization parallel ( $E//x$ ) and perpendicular to steps ( $E//y$ ) taken from (c) and (d) the Co  $L_3$  edge and (e) and (f) the Ni  $L_2$  edge. (g) Both the Co  $L_3$  ratio and the Ni  $L_2$  ratio exhibit  $\cos^2\phi$  dependence on the x-ray polarization angle ( $\phi$ ) at  $T = 300\text{K}$ , showing that both Co and Ni spins in  $\text{Co}_{0.5}\text{Ni}_{0.5}\text{O}$  are along the y axis. (h) Both Co  $L_3$  ratio and Ni  $L_2$  ratio differences vanish at 430 K, showing  $T_N = 430\text{K}$  for the 8 nm  $\text{Co}_{0.5}\text{Ni}_{0.5}\text{O}$  film.

XMLD measurement and a 25-nm Py film was deposited on the other half of the sample for ROTMOKE measurement. Both Fe and Py were grown at room temperature. The Py layer was evaporated from a thermal crucible with mixed target in the composition of  $\text{Fe}_{20}\text{Ni}_{80}$ . A low energy electron diffraction (LEED) pattern [Fig. 1(b)] shows the formation of single crystalline  $\text{Co}_{0.5}\text{Ni}_{0.5}\text{O}$ , NiO, and Fe films with  $\text{Fe}[100]//\text{NiO}[110]//\text{Co}_{0.5}\text{Ni}_{0.5}\text{O}[110]//\text{Ag}[110]$ , and the formation of polycrystalline Py film. The sample was capped with a 2-nm Ag layer [28], and was measured using XMLD in total electron yield mode at beam line 4.0.2 and beamline

6.3.1 of the Advanced Light Source (ALS). ROTMOKE was measured using a rotation MOKE setup [29].

We first took Co and Ni x-ray absorption spectra (XAS) in Fe/ $\text{Co}_{0.5}\text{Ni}_{0.5}\text{O}$ /vicinal Ag(001). It is known that a vicinal surface aligns the AFM spin axis for CoO(001) and NiO(001) films

[27,30]. The different Néel temperatures ( $T_N$ ) of CoO

[31-33] and with an in-plane spin axis perpendicular to the atomic steps [27]. By taking XAS [19-21,26-28] from the Co  $L_3$  edge [Figs. 1(c) and 1(d)] and the Ni  $L_2$  edge [Figs. 1(e) and 1(f)] at normal incidence of the x rays, the XMLD effect manifests as the different XAS for x-ray polarization ( $E''$ ) parallel to the x and y axis, respectively. Then the presence of the XMLD at 300 K [Figs. 1(c) and 1(e)] and the absence of XMLD at 480 K [Figs. 1(d) and 1(f)] indicate that the 8-nm  $\text{Co}_{0.5}\text{Ni}_{0.5}\text{O}$  film is AFM ( $T_N \sim 290$ ) and NiO ( $T_N 520$  K) are expected to lead to an AFM  $\text{Co}_{0.5}\text{Ni}_{0.5}\text{O}$  film on vicinal Ag(001) with  $T_N > 300$  K

ordered at room temperature. The Co  $R_{L3}$  ratio (intensity at  $E 778.3$  eV divided by intensity at  $E 778.8$  eV) and Ni  $R_{L2}$  ratio (intensity at  $E 870.2$  eV divided by intensity at  $E 871.3$  eV) [Fig. 1(g)] exhibit the expected  $\cos^2\phi$  dependence on the x-ray polarization angle ( $\phi$ ). Both the Co  $R_{L3}$  and Ni  $R_{L2}$  at 300 K exhibit maximum at  $\phi 90^\circ$ , showing that both Co and Ni AFM spins are perpendicular to the atomic steps (parallel to the y axis). Both the Co  $L_3$  ratio difference [  $R_{L3} \equiv R_{L3}(E'' y) -$

$R_{L3}(E'' x)$  and ratio difference [  $\equiv (E'' y) R_{L2} -$

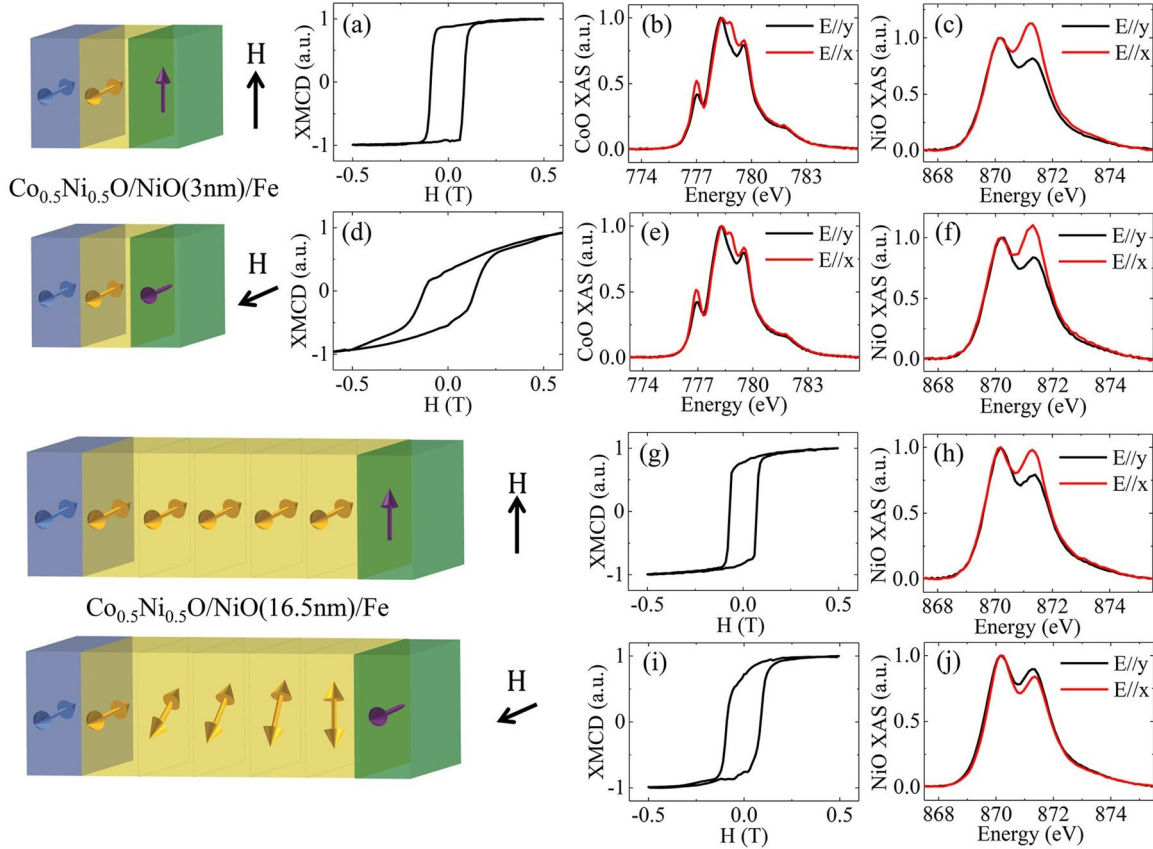


FIG. 2. Result from Fe(1.5 nm)/NiO( $d_{\text{NiO}}$ )/Co<sub>0.5</sub>Ni<sub>0.5</sub>O(8 nm)/vicinal Ag(001). Fe hysteresis loops for (a) and (g)  $H // x$  and (d) and (i)  $H // y$  show that the Fe and NiO spins are coupled perpendicularly. By aligning the Fe magnetization along the x and y axis, (b) and (e) Co XAS and (c) and (f) Ni XAS show that both the Co<sub>0.5</sub>Ni<sub>0.5</sub>O and the NiO AFM spins in  $d_{\text{NiO}}$  3 nm samples are frozen to the y axis. (h) and (j) Ni XAS from the  $d_{\text{NiO}}$  16.5 nm sample show that the NiO AFM spins are twisted into a spiral wall after the rotation of Fe magnetization from the x axis to the y axis.

$R_{L_2}(E // x)$  decrease with temperature and vanish at 430 K, showing that the Co and Ni spins in Co<sub>0.5</sub>Ni<sub>0.5</sub>O are AFM ordered together with a Néel temperature of  $T_N = 430$  K [Fig. 1(h)].

We then studied the NiO spiral wall in Fe(1.5 nm)/NiO( $d_{\text{NiO}}$ )/Co<sub>0.5</sub>Ni<sub>0.5</sub>O(8 nm)/vicinal Ag(001) by applying a 4000 Oe magnetic field ( $H$ ) to align the Fe magnetization to the x and y axis, respectively. In the thin limit of NiO thickness at  $d_{\text{NiO}} = 3$  nm, we observe the same XAS spectra at Co  $L_3$  edge [Figs. 2(b) and 2(e)] for  $H // x$  and  $H // y$ , showing

that the Co<sub>0.5</sub>Ni<sub>0.5</sub>O spins are frozen to the y axis and do not rotate with the Fe magnetization. Similarly, the same XAS spectra at Ni  $L_2$  edge for  $H // x$  and  $H // y$  [Figs. 2(c) and 2(f)] show that the 3 nm NiO spins are also frozen, i.e., the NiO/Co<sub>0.5</sub>Ni<sub>0.5</sub>O interfacial coupling is much stronger than the Fe/NiO interfacial coupling to pin the 3-nm NiO spins parallel to the y axis.

In addition, the Co  $L_3$  edge easy-axis hysteresis loop for  $H // x$  [Fig. 2(a)] and hard-axis loop for  $H // y$  [Fig. 2(d)] show that the Fe magnetization is coupled perpendicularly to the

Fe magnetization is rotated from its easy x axis to its hard y axis. Taking into account the 5.5 nm probing depth of an electron yield in NiO [27] and of the NiO spin pinning at the NiO/Co<sub>0.5</sub>Ni<sub>0.5</sub>O interface, the results of Figs. 2(h) and 2(j) suggest that the Fe/NiO perpendicular interfacial coupling has twisted the 16.5-nm NiO AFM spins into a spiral wall at  $H // y$  with the NiO spins roughly parallel to the x axis at the Fe/NiO interface and pinned to the y axis at the NiO/Co<sub>0.5</sub>Ni<sub>0.5</sub>O interface.

Next, we measured the NiO XMLD in Fe(1.5 nm)/NiO(wedge)/Co<sub>0.5</sub>Ni<sub>0.5</sub>O(8 nm)/vicinal Ag(001) where the NiO wedge ensures the same Fe/NiO interface so that the XMLD result should reveal systematically the dependence of the NiO spiral wall on  $d_{\text{NiO}}$ . We rotate the Fe magnetization (rotation angle  $\phi_{\text{FM}}$ ) with a 4000 Oe rotating magnetic field and measured the NiO  $L_2$  ratio difference [ $R_{L_2} \equiv \frac{R_{L_2}(E // y) - R_{L_2}(E // x)}{R_{L_2}(E // y) + R_{L_2}(E // x)}$ ] as a function of  $\phi_{\text{FM}}$  [Fig. 3(a)].

NiO spins, in agreement to the spin-flop coupling at the Fe/NiO interface [19,28,34]. In the thick limit of  $d_{\text{NiO}} = 16.5$  nm, the NiO XAS [Fig. 2(h)] shows the same character as that in the  $d_{\text{NiO}} = 3$

nm sample  
[Fig. 2(e)] for  $H // x$ , but reverses its sign  
[Fig. 2(j)] after the

For 3-nm NiO film, the  $R_{L2}$  value remains unchanged with increasing  $\phi_{FM}$  [Fig. 3(b)], confirming the frozen NiO AFM spins for  $d_{NiO} < 3$  nm. For thicker NiO films, the  $R_{L2}(\phi_{FM})$  value decreases as  $\phi_{FM}$  increases from  $0^\circ$  to  $90^\circ$ , showing a winding of the NiO spins into a spiral wall. As  $\phi_{FM}$  keeps increasing from  $90^\circ$  to  $180^\circ$ , the  $R_{L2}(\phi_{FM})$  value gradually increases to resume its original value of  $R_{L2}(0^\circ)$



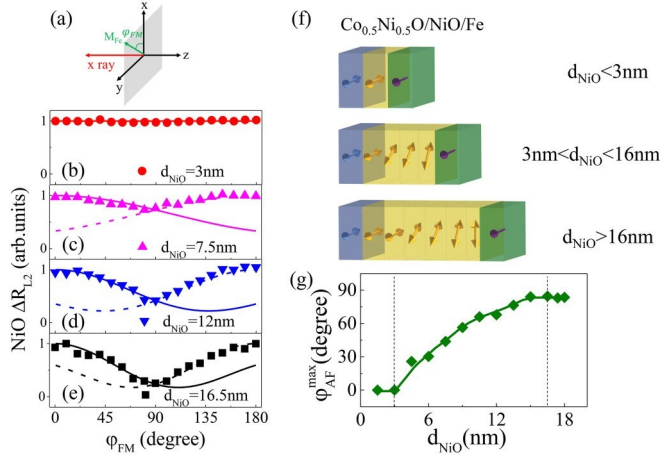


FIG. 3. (a) Schematic drawing of the XMLD measurement. (b)-(e) NiO  $R_{L2}$  as a function of the Fe magnetization rotation angle ( $\phi_{FM}$ ). The solid and dashed lines are calculated XMLD for right-handed and left-handed spiral walls, respectively. (f) Schematic drawing of the NiO AFM spiral walls in three  $d_{NiO}$  regions. (g) NiO spiral angle as a function of  $d_{NiO}$ , where  $\phi_{AF}^{max}$  is the NiO spin rotation angle at Fe/NiO interface at  $\phi_{FM} = 90^\circ$ .

[Figs. 3(c)–3(e)]. The symmetric behavior of  $R_{L2}(\phi_{FM})$  with respect to  $\phi_{FM} = 90^\circ$  indicates that the NiO spiral wall has switched its chirality from right handed to left handed at  $\phi_{FM} = 90^\circ$  and unwinds back to single domain as the Fe magnetization rotates from  $90^\circ$  to  $180^\circ$  [26].

To obtain the NiO spiral angle  $\phi_{AF}^{max}$  (the NiO spin rotation angle at the Fe/NiO interface at  $\phi_{FM} = 90^\circ$ ), we consider the NiO XMLD signal as the averaged result from the NiO spiral spins at different depth  $R_{L2} = \frac{1}{L} \int_0^{d_{NiO}} R_{L2}(z) e^{-d/\lambda} dz$ ,

where  $d$  is the distance from the Fe/NiO interface and

$\lambda = 5.5$  nm is the electron escape depth [26,27]. The value of NiO  $R_{L2}$  for different NiO thicknesses were rescaled here to follow a general fitting formula. Assuming a linear dependence of the NiO spin rotation angle on  $d$ ,  $\phi(d) = \phi_{AF}^{max}(d_{NiO} - d)/d_{NiO}$  and the NiO XMLD signal of

$R_{L2}(d) = A \cos^2 \phi(d) + B$ , we calculated the averaged  $A$  for right-handed and left-handed spiral walls and fitted the

experimental data with  $\phi_{AF}^{max}$  as the only fitting parameter. The result [solid and dashed lines in Figs. 3(b)–3(e)] agrees very well with the experimental data. The retrieved  $\phi_{AF}^{max}$  [Fig. 3(g)] shows that the NiO AFM spins are frozen for  $d_{NiO} \leq 3$  nm, wind up to a spiral wall for  $3 < d_{NiO} \leq 16$  nm, and saturate to the final  $\phi_{AF}^{max} = 84^\circ$  spiral wall for  $d_{NiO} > 16$  nm. Regardless of the  $\phi_{AF}^{max}$  value, we always observe a chirality switching at  $\phi_{FM} = 90^\circ$ , showing that Mauri's

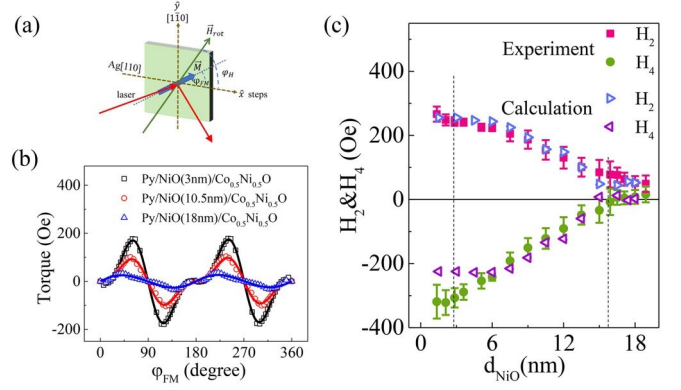


FIG. 4. (a) Experiment geometry for ROTMOKE measurement. (b) Magnetic torque as a function of Py magnetization angle ( $\phi_{FM}$ ) from Py(25 nm)/NiO( $d_{NiO}$ )/Co<sub>0.5</sub>Ni<sub>0.5</sub>O(8 nm)/vicinal Ag(001). Solid lines are fitting results using Eq. (2). (c) Py uniaxial and fourfold anisotropies as a function of  $d_{NiO}$ .

gible magnetic anisotropy so that any Py anisotropies in Py/NiO/Co<sub>0.5</sub>Ni<sub>0.5</sub>O/vicinal Ag(001) should come entirely from the Py/NiO interaction. ROTMOKE was applied to the film with a 700-Oe in-plane rotating magnetic field. The Py magnetic energy density is described by

$$E = -MH \cos(\phi_H - \phi_{FM}) - MH_2 \cos \phi_{FM} + \frac{1}{2} MH_2 \sin^2 \phi_{FM} + \frac{1}{2} MH_4 \sin \phi_{FM} \cos \phi_{FM}. \quad (1)$$

Here  $\phi_H$  and  $\phi_{FM}$  are the in-plane angles of the magnetic field ( $H$ ) and the Py magnetization ( $M$ ) with respect to the  $x$  axis, respectively.  $H_1$ ,  $H_2$ , and  $H_4$  are the exchange bias, uniaxial anisotropy field, and fourfold anisotropy field, respectively. Under this definition,  $H > 0$  corresponds to the Py uniaxial easy axis being the  $x$  axis, and  $H_4 > 0$  corresponds to the Py fourfold easy axes being the  $x$  and  $y_{\pm}$  axes. Minimizing the energy with respect to  $\phi_{FM}$  leads to

$$l(\phi_{FM}) \equiv H \sin(\phi_H - \phi_{FM}) = \frac{1}{2} H_2 \sin \phi_{FM} + \frac{1}{2} H_2 \sin(2\phi_{FM}) + \frac{1}{2} H_4 \sin(4\phi_{FM}). \quad (2)$$

180° spiral wall never forms in NiO film in the whole thickness range.

Next, we studied the FM overlayer magnetic anisotropy. In order to reveal the induced magnetic anisotropy rather than the enhancement of an existing anisotropy, we studied Py soft magnetic film as opposed to Fe film. Since the Py/NiO coupling has comparable coupling strength with the Fe/NiO [35,36], we expect that the NiO spiral wall in Py/NiO/Co<sub>0.5</sub>Ni<sub>0.5</sub>O/vicinal Ag(001) behaves the same as in Fe/NiO/Co<sub>0.5</sub>Ni<sub>0.5</sub>O/vicinal Ag(001). We



first confirmed that the 25-nm Py layer on vicinal Ag(001) has a negli-

Here  $I(\phi_{FM})$  is the magnetic torque which is determined

by experimental values of  $\phi_H$  and  $\phi_{FM}$ . Figure 4(b) shows representative torque curves as a function of  $\phi_{FM}$  from Py(25 nm)/NiO( $d_{NiO}$ )/Co<sub>0.5</sub>Ni<sub>0.5</sub>O(8 nm)/vicinal Ag(001) at  $d_{NiO}$

3, 10.5, and 18 nm. By fitting the torque curves using Eq. (2), we obtained the anisotropy fields.

First, we find that the exchange bias field is negligibly small ( $H_1 < 5$  Oe) for all  $d_{NiO}$ , showing that the NiO chirality-switched spiral wall (Fig. 3) does not lead to an obvious exchange bias. Next, we find that the Py film always consists of a positive uniaxial anisotropy ( $H_2 > 0$ ) and a negative four-fold anisotropy ( $H_4 < 0$ ) with their magnitudes being constants for  $d_{NiO} < 3$  nm, decreasing with  $d_{NiO}$  for  $3 < d_{NiO} <$

16 nm, and becoming small constants for  $d_{NiO} > 16$  nm [Fig. 4(c)], corresponding exactly to the three regions of the NiO chirality-switched spiral wall [Fig. 3(g)]. It should be mentioned that the planar domain wall width in bulk NiO was reported to be 14 nm [37] which is very close to the 16 nm value in our system.

It is easy to understand the uniaxial anisotropy. For frozen NiO spins parallel to the y axis at  $d_{\text{NiO}} < 3$  nm, the Py/NiO perpendicular interfacial coupling favors the Py magnetization in the x axis, leading to a uniaxial anisotropy. For  $3 < d_{\text{NiO}} < 16$  nm, a rotation of the Py magnetization away from its easy x axis should twist the NiO spins into a spiral wall. Because of the chirality switching of the NiO spiral wall at  $\phi_{\text{FM}} = 90^\circ$ , the NiO spiral wall energy reaches maximum at

$\phi_{\text{FM}} = 90^\circ$  and then decreases for  $90^\circ < \phi_{\text{FM}} < 180^\circ$  due to the unwinding of the spiral wall. Noticing that the Mauri's  $180^\circ$  spiral wall winds up all the way to  $\phi_{\text{FM}} = 180^\circ$ , the chirality switching of the AFM spiral wall at  $\phi_{\text{FM}} = 90^\circ$  should convert the exchange bias of the Mauri's  $180^\circ$  wall to a uniaxial anisotropy. For  $d_{\text{NiO}} > 16$  nm, only NiO spins within 16 nm from the Py/NiO interface wind up into a spiral wall, resulting in a constant spiral wall energy. Comparing to the relatively simple picture of the uniaxial anisotropy, the Py fourfold anisotropy is a little bit puzzling. Unlike Fe/CoO(001) [20,38] where the Fe/CoO magnetic coupling modifies the existing Fe fourfold anisotropy, polycrystalline Py film does not contain a fourfold anisotropy so that the observed  $H_4$  must come entirely from the Py/NiO interaction. It is tempting to relate the Py fourfold anisotropy to the NiO(001) fourfold anisotropy. However, bulk NiO and CoO anisotropies favor their spins parallel to the [110] and [11-0] axes (x and y axes in Fig. 4) [25,38], thus they cannot explain the negative Py fourfold anisotropy which favors the Py spins parallel to the NiO [100] and [010] axes ( $45^\circ$  to the x axis).

To understand the role of the chirality switching of the NiO spiral wall in the Py anisotropy, we have to correct the Mauri's model to describe the Py magnetic energy

$$E(\phi_{\text{FM}}) = E_W (1 - \cos \phi_{\text{AF}}) + J_C \sin^2(\phi_{\text{FM}} - \phi_{\text{AF}}), \quad (3)$$

where the first term describes the NiO spiral wall energy, the second term describes the Py/NiO perpendicular coupling, and  $\phi_{\text{AF}}$  is the NiO spiral wall opening angle. To best single out the effect of the chirality switching of the AFM spiral wall, Eq. (3) only made two corrections to the original Mauri's model [22]: (1) the linear FM/AFM interfacial coupling in the Mauri's model is replaced by the perpendicular FM/AFM coupling; and (2) the chirality switching of the NiO spiral wall at  $\phi_{\text{FM}} = 90^\circ$  folds the energy from  $0^\circ < \phi_{\text{FM}} < 90^\circ$  into  $90^\circ < \phi_{\text{FM}} < 180^\circ$ , i.e.,  $E(\phi_{\text{FM}}) = E(180^\circ - \phi_{\text{FM}})$

Noticing that it is Eq. (3) that leads to the anisotropy terms in Eq. (1), it is easy to recognize that  $E \equiv E(\phi_{\text{FM}} = 90^\circ) - E(\phi_{\text{FM}} = 0^\circ)$  is nothing but the uniaxial anisotropy. Then from  $\phi_{\text{AF}} \approx 0^\circ$  for  $d_{\text{NiO}} < 3$  nm and  $E_W = 2J_C \cos \phi_{\text{AF}}$  for  $d_{\text{NiO}} > 3$  nm, we obtain  $H_2 \approx H_0 \equiv 2J_C$  for  $d_{\text{NiO}} < 3$  nm and  $H_2 = H_0 (2 \cos \phi_{\text{AF}} - \cos^2 \phi_{\text{AF}})$  for  $d_{\text{NiO}} > 3$  nm. Taking

from Fig. 3(g), we plot the dependence of  $H_2(d_{\text{NiO}})$  in Fig. 4(c). The result agrees very well with the for  $90^\circ < \phi_{\text{FM}} < 180^\circ$ . As shown in the Supplemental Material [39], it is the perpendicular FM/AFM coupling that permits a chirality switching of the AFM spiral wall at  $\phi_{\text{FM}} = 90^\circ$ , leading to the energy folding which eliminates the exchange bias from the spiral wall (then exchange bias in real experimental systems are related to uncompensated spins, pinning centers, and defects, etc. [25] rather than the AFM spiral wall). Finally,  $E_W = AK$  in the original Mauri's model (A and K are the NiO exchange stiffness and the anisotropy constant, respectively) should be valid only for  $d_{\text{NiO}} > 16$  nm. For  $d_{\text{NiO}} \leq 16$  nm,  $E_W$  should depend on  $d_{\text{NiO}}$  and be greater than  $AK$ . The  $E_W$  value for  $d_{\text{NiO}} < 16$  nm can be retrieved by experimental value of  $\phi_{\text{AF}}^{\text{max}}$  in Fig. 3(g). In fact, it is easy to derive  $E_W = 2J_C \cos \phi_{\text{AF}}^{\text{max}}$  (valid for  $d_{\text{NiO}} > 3$  nm) by minimizing Eq. (3) with respect to  $\phi_{\text{AF}}$  at  $\phi_{\text{FM}} = 90^\circ$ .

AF

experimental data.

To understand the fourfold anisotropy especially in thin NiO thickness limit, consider first the extreme case of a small spiral angle. Minimizing the energy of Eq. (3) with respect to  $\phi_{AF}$ , it is easy to show that the total energy in this limit is  $E_{JC} \sin^2 \phi_{FM} 2J^2 / E_W \sin^2 \phi_{FM} \cos^2 \phi_{FM}$ , i.e., a positive uniaxial anisotropy and a negative fourfold anisotropy, in agreement with the experimental observation. In fact, the negative fourfold anisotropy is a general result of any small angle AFM spiral wall opened by a perpendicular FM/AFM interfacial coupling, and the energy folding at  $\phi_{FM} 90^\circ$  due to the chirality switching of the AFM spiral wall naturally converts the exchange bias from the Mauri's  $180^\circ$  spiral wall into a uniaxial, a fourfold, and higher even order anisotropies in the FM film (Supplemental Material [39]). For greater value of  $\phi_{AF}$  in the region of  $3 < d_{NiO} < 16$  nm, we performed numerical calculation to minimize the energy of Eq. (3) and obtained the fourfold anisotropy  $H_4$  by doing the corresponding Fourier transformation (Supplemental Material [39]). The result agrees well with the experimental data [Fig. 4(c)].

In summary, we investigated the NiO spiral wall in

FM/NiO/Co<sub>0.5</sub>Ni<sub>0.5</sub>O/vicinal Ag(001) system. We find that NiO AFM spins are almost frozen for  $d_{NiO} < 3$  nm, gradually form a spiral wall for  $3 < d_{NiO} < 16$  nm, and complete the spiral wall formation for  $d_{NiO} > 16$  nm. Different from Mauri's  $180^\circ$  wall, we find that the NiO spiral wall switches its chirality at  $\phi_{FM} 90^\circ$  and consequently lead to a uniaxial anisotropy and a negative fourfold anisotropy. The original Mauri's model has to be corrected by taking into account the chirality switching of the AFM spiral wall in order to explain the experimental observations.

This work is supported by the U.S. Department of Energy, Office of Science, Office of Basic Energy Sciences, Materials Sciences and Engineering Division under Contract No. DE-AC02-05CH11231 (van der Waals heterostructures program, KCWF16), National Science Foundation Grant No. DMR-1504568, King Abdullah University of Science and Technology (KAUST), Office of Sponsored Research (OSR) and under the Award No. OSR-2016-CRG5-2977, Future Materials Discovery Program through the National Research Foundation of Korea (No. 2015M3D1A1070467), Science Research Center Program through the National Research Foundation of Korea (No. 2015R1A5A1009962), National Key Research and Development Program of China (No. 2016YFA0300804 and

No. 2017YFA0303303). The operations of the Advanced Light Source at Lawrence Berkeley National Laboratory are supported by the Director, Office of Science, Office of Basic Energy Sciences, and U.S. Department of Energy under Contract No. DE-AC02-05CH11231.

Q.L. and M.Y. contributed equally to this work.

=

=

- [1] J. Nogués and I. K. Schuller, *J. Magn. Magn. Mater.* **192**, 203 (1999).
- [2] M. Kiwi, *J. Magn. Magn. Mater.* **234**, 584 (2001).
- [3] W. Zhang and K. M. Krishnan, *Mater. Sci. Eng. R Rep.* **105**, 1 (2016).
- [4] A. K. Nayak, M. Nicklas, S. Chadov, P. Khuntia, C. Shekhar, A. Kalache, M. Baenitz, Y. Skourski, V. K. Gudur, A. Puri, U. Zeitler, J. M. D. Coey, and C. Felser, *Nat. Mater.* **14**, 679 (2015).
- [5] K. Yang, W. Paul, F. D. Natterer, J. L. Lado, Y. Bae, P. Willke, T. Choi, A. Ferrón, J. Fernández-Rossier, A. J. Heinrich, and C. P. Lutz, *Phys. Rev. Lett.* **122**, 227203 (2019).
- [6] F. Y. Yang and C. L. Chien, *Phys. Rev. Lett.* **85**, 2597 (2000).
- [7] S. Brems, K. Temst, and C. Van Haesendonck, *Phys. Rev. Lett.* **99**, 067201 (2007).
- [8] H. Ouyang, K.-W. Lin, C.-C. Liu, S.-C. Lo, Y.-M. Tzeng, J.-Y. Guo, and J. van Lierop, *Phys. Rev. Lett.* **98**, 097204 (2007).
- [9] X. P. Qiu, D. Z. Yang, S. M. Zhou, R. Chantrell, K. O'Grady, U. Nowak, J. Du, X. J. Bai, and L. Sun, *Phys. Rev. Lett.* **101**, 147207 (2008).
- [10] J. Sort, A. Hoffmann, S.-H. Chung, K. S. Buchanan, M. Grimsditch, M. D. Baró, B. Dieny, and J. Nogués, *Phys. Rev. Lett.* **95**, 067201 (2005).
- [11] A. Scholl, M. Liberati, E. Arenholz, H. Ohldag, and J. Stohr, *Phys. Rev. Lett.* **92**, 247201 (2004).
- [12] W. H. Meiklejohn, *J. Appl. Phys.* **33**, 1328 (1962).
- [13] R. Morales, Z.-P. Li, J. Olamit, K. Liu, J. M. Alameda, and I. K. Schuller, *Phys. Rev. Lett.* **102**, 097201 (2009).
- [14] M. Y. Khan, C.-B. Wu, and W. Kuch, *Phys. Rev. B* **89**, 094427 (2014).
- [15] Y. Xu, Q. Ma, J. W. Cai, and L. Sun, *Phys. Rev. B* **84**, 054453 (2011).
- [16] A. Migliorini, B. Kuerbanjiang, T. Huminiuc, D. Kepaptsoglou, M. Muñoz, J. L. F. Cuñado, J. Camarero, C. Aroca, G. Vallejo-Fernández, V. K. Lazarov, and J. L. Prieto, *Nat. Mater.* **17**, 28, (2018).
- [17] H. Ohldag, A. Scholl, F. Nolting, E. Arenholz, S. Maat, A. T. Young, M. Carey, and J. Stöhr, *Phys. Rev. Lett.* **91**, 017203 (2003).
- [18] S. Bruck, G. Schütz, E. Goering, X. Ji, and K. M. Krishnan, *Phys. Rev. Lett.* **101**, 126402 (2008).
- [19] J. Wu, J. S. Park, W. Kim, E. Arenholz, M. Liberati, A. Scholl, Y. Z. Wu, C. Hwang, and Z. Q. Qiu, *Phys. Rev. Lett.* **104**, 217204 (2010).
- [20] J. Li, Y. Meng, J. S. Park, C. A. Jenkins, E. Arenholz, A. Scholl, A. Tan, H. Son, H. W. Zhao, C. Hwang, Y. Z. Wu, and Z. Q. Qiu, *Phys. Rev. B* **84**, 094447 (2011).
- [21] Q. Li, G. Chen, T. P. Ma, J. Zhu, A. T. N'Diaye, L. Sun, T. Gu, Y. Huo, J. H. Liang, R. W. Li, C. Won, H. F. Ding, Z. Q. Qiu, and Y. Z. Wu, *Phys. Rev. B* **91**, 134428 (2015).
- [22] D. Mauri, H. C. Siegmann, P. S. Bagus, and E. Kay, *J. Appl. Phys.* **62**, 3047 (1987).
- [23] R. L. Stamps, *J. Phys. D: Appl. Phys.* **33**, R247 (2000).
- [24] J.-V. Kim, R. L. Stamps, B. V. McGrath, and R. E. Camley, *Phys. Rev. B* **61**, 8888 (2000).
- [25] T. C. Schulthess and W. H. Butler, *Phys. Rev. Lett.* **81**, 4516 (1998).
- [26] J. Li, A. Tan, S. Ma, R. F. Yang, E. Arenholz, C. Hwang, and Z. Q. Qiu, *Phys. Rev. Lett.* **113**, 147207 (2014).
- [27] Y. Z. Wu, Y. Zhao, E. Arenholz, A. T. Young, B. Sinkovic, C. Won, and Z. Q. Qiu, *Phys. Rev. B* **78**, 064413 (2008).
- [28] Q. Li, J. H. Liang, Y. M. Luo, Z. Ding, T. Gu, Z. Hu, C. Y. Hua, H.-J. Lin, T. W. Pi, S. P. Kang, C. Won, and Y. Z. Wu, *Sci. Rep.* **6**, 22355 (2016).
- [29] J. Li, E. Jin, H. Son, A. Tan, W. N. Cao, C. Hwang, and Z. Q. Qiu, *Rev. Sci. Instrum.* **83**, 033906 (2012).
- [30] Q. Li, T. Gu, J. Zhu, Z. Ding, J. X. Li, J. H. Liang, Y. M. Luo, Z. Hu, C. Y. Hua, H.-J. Lin, T. W. Pi, C. Won, and Y. Z. Wu, *Phys. Rev. B* **91**, 104424 (2015).
- [31] J. A. De Toro, D. P. Marques, P. Muñoz, V. Skumryev, J. Sort, D. Givord, and J. Nogués, *Phys. Rev. Lett.* **115**, 057201 (2015).
- [32] J. A. Borchers, M. J. Carey, R. W. Erwin, C. F. Majkrzak, and A. E. Berkowitz, *Phys. Rev. Lett.* **70**, 1878 (1993).
- [33] E. N. Abarra, K. Takano, F. Hellman, and A. E. Berkowitz, *Phys. Rev. Lett.* **77**, 3451 (1996).
- [34] J. Wu, D. Carlton, J. S. Park, Y. Meng, E. Arenholz, A. Doran, A. T. Young, A. Scholl, C. Hwang, H. W. Zhao, J. Bokor, and Z. Q. Qiu, *Nat. Phys.* **7**, 303 (2011).
- [35] M. Yang, Q. Li, A. T. N'Diaye, Q. Y. Dong, N. Gao, E. Arenholz, C. Hwang, Y. Z. Wu, and Z. Q. Qiu, *J. Magn. Magn. Mater.* **460**, 6 (2018).
- [36] J. Li, M. Przybylski, F. Yildiz, X. L. Fu, and Y. Z. Wu, *Phys. Rev. B* **83**, 094436 (2011).
- [37] M. Fraune, U. Rüdiger, G. Güntherodt, S. Cardoso, and P. Freitas, *Appl. Phys. Lett.* **77**, 3815 (2000).
- [38] W. N. Cao, J. Li, G. Chen, J. Zhu, C. R. Hu, and Y. Z. Wu, *Appl. Phys. Lett.* **98**, 262506 (2011).
- [39] See Supplemental Material at <http://link.aps.org/supplemental/10.1103/PhysRevMaterials.3.114415> the details of chirality switching and energy folding.