

UC Davis

UC Davis Previously Published Works

Title

A Gs-coupled purinergic receptor boosts Ca²⁺ influx and vascular contractility during diabetic hyperglycemia

Permalink

<https://escholarship.org/uc/item/52w010dw>

Authors

Prada, Maria Paz
Syed, Arsalan U
Buonarati, Olivia R
et al.

Publication Date

2019

DOI

10.7554/elife.42214

Peer reviewed

A G_s-coupled purinergic receptor boosts Ca²⁺ influx and vascular contractility during diabetic hyperglycemia

Maria Paz Prada^{1†}, Arsalan U Syed^{1†}, Olivia R Buonarati^{1†}, Gopireddy R Reddy¹, Matthew A Nystoriak², Debapriya Ghosh¹, Sergi Simó³, Daisuke Sato¹, Kent C Sasse⁴, Sean M Ward⁵, Luis F Santana⁶, Yang K Xiang^{1,7}, Johannes W Hell¹, Madeline Nieves-Cintrón^{1*}, Manuel F Navedo^{1*}

¹Department of Pharmacology, University of California, Davis, Davis, United States; ²Diabetes & Obesity Center, Department of Medicine, University of Louisville, Kentucky, United States; ³Department of Cell Biology & Human Anatomy, University of California, Davis, Davis, United States; ⁴Sasse Surgical Associates, Reno, United States; ⁵Department of Physiology & Cell Biology, University of Nevada, Reno, United States; ⁶Department of Physiology & Membrane Biology, University of California, Davis, Davis, United States; ⁷VA Northern California Healthcare System, Mather, United States

Abstract Elevated glucose increases vascular reactivity by promoting L-type Ca_v1.2 channel (LTCC) activity by protein kinase A (PKA). Yet, how glucose activates PKA is unknown. We hypothesized that a G_s-coupled P2Y receptor is an upstream activator of PKA mediating LTCC potentiation during diabetic hyperglycemia. Experiments in apyrase-treated cells suggested involvement of a P2Y receptor underlying the glucose effects on LTCCs. Using human tissue, expression for P2Y₁₁, the only G_s-coupled P2Y receptor, was detected in nanometer proximity to Ca_v1.2 and PKA. FRET-based experiments revealed that the selective P2Y₁₁ agonist NF546 and elevated glucose stimulate cAMP production resulting in enhanced PKA-dependent LTCC activity. These changes were blocked by the selective P2Y₁₁ inhibitor NF340. Comparable results were observed in mouse tissue, suggesting that a P2Y₁₁-like receptor is mediating the glucose response in these cells. These findings established a key role for P2Y₁₁ in regulating PKA-dependent LTCC function and vascular reactivity during diabetic hyperglycemia.

DOI: <https://doi.org/10.7554/eLife.42214.001>

***For correspondence:**

mcnieves@ucdavis.edu (MN-Có);
mfnavedo@ucdavis.edu (MFN)

†These authors contributed equally to this work

Competing interests: The authors declare that no competing interests exist.

Funding: See page 31

Received: 21 September 2018

Accepted: 16 February 2019

Published: 01 March 2019

Reviewing editor: Richard S Lewis, Stanford University School of Medicine, United States

© Copyright Prada et al. This article is distributed under the terms of the [Creative Commons Attribution License](https://creativecommons.org/licenses/by/4.0/), which permits unrestricted use and redistribution provided that the original author and source are credited.

Introduction

Diabetes is a major risk factor contributing to cardiovascular complications, including hypertension, increased risk of stroke, coronary disease, and organ failure (Whelton et al., 2018). These complications are often linked to the effects of elevated extracellular glucose (e.g. hyperglycemia - the hallmark metabolic abnormality in diabetes) on vascular function (Brown et al., 2010; Cooper et al., 2001; Tousoulis et al., 2013). In addition to endothelium-dependent alterations (Lagaud et al., 2001; Sena et al., 2013), endothelium-independent modifications, including enhanced contractility of arterial myocytes, are emerging as critical contributing factors to these complications (Aronson, 2008; DeFronzo et al., 2013; Fleischhacker et al., 1999; Montero et al., 2013; Nieves-Cintrón et al., 2018). Consistent with this notion, we and others recently demonstrated augmented vasoconstriction in response to acute and chronic elevations in extracellular glucose that were independent of endothelial function (Fleischhacker et al., 1999; Jackson et al., 2016; Nystoriak et al.,

2017). We linked these glucose-mediated effects on vascular reactivity to an increase in L-type $\text{Ca}_v1.2$ channel (LTCC) activity in human and murine arterial myocytes (Navedo et al., 2010b; Nystoriak et al., 2017). This is critical, as Ca^{2+} influx via LTCCs is the main Ca^{2+} entry pathway in these cells and determines muscle contractility and arterial diameter (Knot and Nelson, 1998). Unexpectedly, we found that glucose-mediated potentiation of LTCCs involves phosphorylation of $\text{Ca}_v1.2$ at serine 1928 (Ser¹⁹²⁸) by protein kinase A (PKA) (Morotti et al., 2017; Navedo et al., 2010b; Nystoriak et al., 2017). Yet, how glucose leads to PKA activation is unknown.

Elevations in cellular glucose have been shown to trigger autocrine release of nucleotides (e.g. ATP, UTP) into the extracellular space of many cells, including arterial myocytes (Costa et al., 2009; Hazama et al., 1998; Nilsson et al., 2006; Parodi et al., 2002). These extracellular nucleotides can then act on G protein-coupled P2Y receptors to induce a plethora of cellular responses (von Kügelgen and Harden, 2011). Previous studies demonstrated that elevations in extracellular glucose led to increases in intracellular Ca^{2+} ($[\text{Ca}^{2+}]_i$) in isolated arterial myocytes (Nilsson et al., 2006). Indeed, this glucose-mediated response was associated with enhanced autocrine release of nucleotides engaging P2Y receptors, but the contributing mechanisms as well as the identity of the P2Y receptor involved are unclear.

Eight functionally diverse G protein-coupled P2Y receptors have been identified (von Kügelgen and Harden, 2011). Most of these P2Y receptors are coupled to $G_{q/i}$ proteins. Conversely, P2Y₁₁ is the only P2Y receptor that is coupled to G_s (Communi et al., 1997; Kennedy, 2017; Schuchardt et al., 2012; von Kügelgen and Harden, 2011). Activation of this receptor could then activate adenylyl cyclase (AC) and PKA to underlie the glucose-induced effects on LTCC activity, but its role in arterial myocytes is unclear. P2Y₁₁ receptors were first cloned from human tissue and subsequently identified in other species (Kennedy, 2017; von Kügelgen and Harden, 2011). Although the P2Y₁₁ gene has not been found at the expected position in the mouse genome, recent rodent annotations related to this gene (e.g. XM_008766009.2 and XM_0130655917.2), as well as studies defining a functional role based on pharmacological data obtained from rat and mouse tissue hinted at the presence of at least a P2Y₁₁-like receptor in mice (Kennedy, 2017). We, therefore, undertook a comprehensive approach to investigate whether upstream engagement of this G_s -coupled P2Y receptor is implicated in PKA activation leading to increased Ser¹⁹²⁸ phosphorylation of vascular $\text{Ca}_v1.2$ that results in potentiation of LTCC activity during diabetic hyperglycemia. Accordingly, Western blot analysis, immunofluorescence confocal microscopy, Ground State Depletion (GSD) super-resolution nanoscopy, FRET-based cAMP imaging and voltage-clamp electrophysiology confirmed functional expression of P2Y₁₁ in human arterial myocytes. We found that elevated glucose stimulates cAMP synthesis with the same magnitude as that observed upon application of the selective P2Y₁₁ agonist NF546 or when both stimuli were given simultaneously, thus suggesting that glucose and NF546 signaling proceed through the same pathway. Nanometer proximity was observed between P2Y₁₁ and PKA and P2Y₁₁ and $\text{Ca}_v1.2$ at the sarcolemma of arterial myocytes, which facilitates a structural arrangement that may be essential for glucose effects on LTCC activity. Indeed, the NF546/glucose-induced cAMP signal resulted in enhanced Ser¹⁹²⁸ phosphorylation and LTCC activity in human arterial myocytes, and these changes were prevented by the selective P2Y₁₁ inhibitor NF340. Intriguingly, comparable functional data were observed in mouse arterial myocytes, suggesting that a P2Y₁₁-like receptor could be mediating the glucose response in these cells that results in vasoconstriction (Kennedy, 2017). Thus, our data in human and murine tissue indicate a key role for a G_s -coupled P2Y receptor, which fits the distribution, pharmacological, and signaling profile of a P2Y₁₁ or P2Y₁₁-like receptor, respectively, as an upstream player in the regulation of LTCCs and vascular reactivity during diabetic hyperglycemia. These findings may have important clinical and therapeutic implications as they may point to P2Y₁₁ as a potential target for treating diabetic vascular complications.

Results

Glucose-induced extracellular nucleotide release mediates Ser¹⁹²⁸ phosphorylation, increased LTCC activity and vasoconstriction

In our first series of experiments, we pressurized (60 mmHg) mouse cerebral arteries to develop stable and spontaneous tone (Supplementary file 1 and 2). When increasing extracellular glucose from

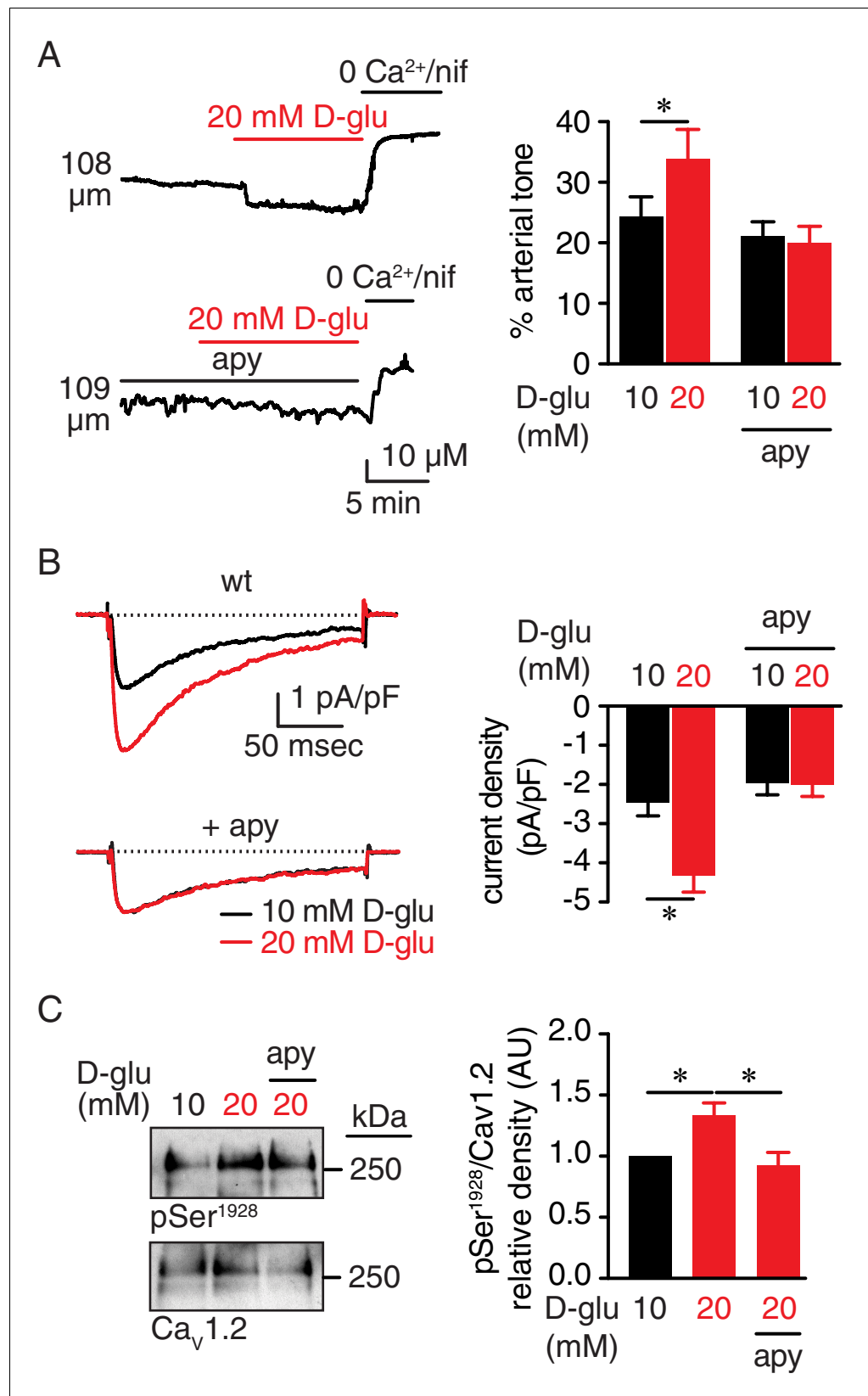


Figure 1. Extracellular nucleotides promote vasoconstriction, $\text{Ca}_v1.2$ activity and Ser^{1928} phosphorylation in response to 20 mM D-glucose in murine arterial myocytes. (A) Representative diameter recordings and summary arterial tone data from pressurized (60 mmHg) wt mouse cerebral arteries before and after application of 20 mM D-glucose. (B) Representative current density recordings from wt mouse cerebral arteries before and after application of 20 mM D-glucose. (C) Representative Western blots and summary relative density data from wt mouse cerebral arteries before and after application of 20 mM D-glucose. * indicates statistical significance ($p < 0.05$).

Figure 1 continued on next page

Figure 1 continued

D-glucose in the absence (n = 6 arteries from six mice) and presence (n = 6 arteries from six mice) of apyrase (apy; 0.32 U/ml; *p<0.05, Wilcoxon matched pairs test; **Figure 1—source data 1**). (B) Characteristic I_{Ba} recordings from the same cell and summary I_{Ba} data from wt mouse cerebral arterial myocytes evoked by step depolarizations from -70 to +10 mV before and after application of 20 mM D-glucose in the absence (n = 11 cells from five mice) and presence of apyrase (n = 9 cells from five mice) (*p<0.05, paired t test; **Figure 1—source data 2**). (C) Representative immunoblot detection of phosphorylated Ser¹⁹²⁸ (pSer¹⁹²⁸) and total Ca_v1.2 from wt mouse cerebral and mesenteric arteries after 10 min incubation with 10 mM or 20 mM D-glucose in the absence and presence of apyrase (n = 10 arterial lysates per condition), and quantification of pSer¹⁹²⁸ (AU = arbitrary units) (*p<0.05, Kruskal-Wallis with Dunn's multiple comparisons; **Figure 1—source data 3**).

DOI: <https://doi.org/10.7554/eLife.42214.002>

The following source data and figure supplements are available for figure 1:

Source data 1. Excel spreadsheet containing the individual numeric values of % arterial tone analyzed in **Figure 1A** and corresponding raw diameters.

DOI: <https://doi.org/10.7554/eLife.42214.010>

Source data 2. Excel spreadsheet containing the individual numeric values of current density analyzed in **Figure 1B**.

DOI: <https://doi.org/10.7554/eLife.42214.011>

Source data 3. Excel spreadsheet containing the individual numeric values of pSer¹⁹²⁸/Ca_v1.2 relative density analyzed in **Figure 1C**.

DOI: <https://doi.org/10.7554/eLife.42214.012>

Figure supplement 1. K⁺-induced arterial constriction in the absence and presence of apyrase, no changes in arterial tone, I_{Ba} and pSer¹⁹²⁸ in response to 20 mM mannitol, and full-length blots corresponding to **Figure 1C**.

DOI: <https://doi.org/10.7554/eLife.42214.003>

Figure supplement 1—source data 1. Excel spreadsheet containing the individual numeric values of 60 mM K⁺-induced % constriction analyzed in **Figure 1—figure supplement 1A**.

DOI: <https://doi.org/10.7554/eLife.42214.004>

Figure supplement 1—source data 2. Excel spreadsheet containing the individual numeric values of % arterial tone analyzed in **Figure 1—figure supplement 1B** and corresponding raw diameters.

DOI: <https://doi.org/10.7554/eLife.42214.005>

Figure supplement 1—source data 3. Excel spreadsheet containing the individual numeric values of current density analyzed in **Figure 1—figure supplement 1C**.

DOI: <https://doi.org/10.7554/eLife.42214.006>

Figure supplement 1—source data 4. Excel spreadsheet containing the individual numeric values of pSer¹⁹²⁸/α-tubulin relative density analyzed in **Figure 1—figure supplement 1E**.

DOI: <https://doi.org/10.7554/eLife.42214.007>

Figure supplement 2. Enhanced I_{Ba} in response to elevated glucose is prevented by continuous bath perfusion.

DOI: <https://doi.org/10.7554/eLife.42214.008>

Figure supplement 2—source data 1. Excel spreadsheet containing the individual numeric values of current density analyzed in **Figure 1—figure supplement 2B**.

DOI: <https://doi.org/10.7554/eLife.42214.009>

10 mM to 20 mM D-glucose, there was a significant constriction (**Figure 1A** and **Supplementary file 1** and **2**), which is consistent with previous reports by our group and others (**Jackson et al., 2016; Nystoriak et al., 2017**). These extracellular D-glucose concentrations are used because they are within the range of observed nonfasting glucose levels in nondiabetic and diabetic mouse models (**Lagaud et al., 2001; Moien-Afshari et al., 2008; Navedo et al., 2010b; Nieves-Cintrón et al., 2015; Nystoriak et al., 2014; Nystoriak et al., 2017**). Considering that elevating glucose in the external milieu may trigger autocrine release of nucleotides (**Costa et al., 2009; Hazama et al., 1998; Nilsson et al., 2006; Parodi et al., 2002**), we investigated whether hydrolysis of extracellular nucleotides would ablate glucose-mediated vasoconstriction. For these experiments, pressurized arteries (60 mmHg) were pre-treated with the ectonucleotidase apyrase (0.32 U/mL) in a 10 mM D-glucose solution for 10 min. Apyrase-treated arteries failed to constrict to 20 mM D-glucose (**Figure 1A** and **Supplementary file 2**). Vasoconstriction in response to 60 mM potassium (K⁺) in which the membrane potential closely follows the equilibrium potential for K⁺ (~-20 mV) (**Knot and Nelson, 1998**), was similar in control and apyrase-treated arteries (**Figure 1—figure supplement 1A** and **Supplementary file 1** and **2**). These results suggest that differences in glucose-induced

vasoconstriction were not due to an inability of apyrase-treated arteries to respond to 20 mM D-glucose. Furthermore, the glucose-induced constriction was not attributed to changes in osmolarity as treatment with equimolar concentrations of the nonpermeable mannitol (20 mM = 10 mM D-glucose + 10 mM mannitol) had no effect on vascular reactivity (**Figure 1—figure supplement 1B** and **Supplementary file 1** and **2**).

LTCC activity is critical for vascular reactivity (*Knot and Nelson, 1998*), and its function is enhanced in response to acute increases in glucose and in diabetes due to increased Ser¹⁹²⁸ phosphorylation in the Ca_v1.2 carboxy terminal (*Morotti et al., 2017; Navedo et al., 2010b; Nystoriak et al., 2017*). We, thus, examined whether nucleotide degradation with apyrase prevents glucose-mediated increases in LTCC activity and Ser¹⁹²⁸ phosphorylation. To assess this, we used patch-clamp electrophysiology in the whole-cell perforated configuration with barium (Ba²⁺) as the charge carrier, before and after application of nifedipine to determine the nifedipine-sensitive Ba²⁺ current (I_{Ba}) associated with LTCC activity in control and apyrase-treated cerebral arterial myocytes. We found that 20 mM D-glucose significantly enhanced I_{Ba} in wild type (wt) control arterial myocytes, but not in apyrase-treated cells (**Figure 1B**). The glucose effect on LTCC activity was not due to changes in osmolarity as 20 mM mannitol had no impact on I_{Ba} (**Figure 1—figure supplement 1C**).

We next performed Western blot analysis with a specific phospho-antibody against Ser¹⁹²⁸ at Ca_v1.2 and a FP1 antibody for total Ca_v1.2 detection that have been extensively validated by our group (*Buonarati et al., 2017; Davare et al., 1999; Hall et al., 2013; Nystoriak et al., 2017; Patriarchi et al., 2016*). Indeed, we have previously shown that the immunoreactivity at 250 kDa of Ca_v1.2 with the phospho-specific antibody for Ser¹⁹²⁸ (but not a phospho-specific antibody for Ser¹⁷⁰⁰) and FP1 are completely eliminated in tissue from S1928A knockin mice (*Patriarchi et al., 2016*) and conditional Ca_v1.2 knockout mice (*Buonarati et al., 2017*), respectively. Data revealed increased phosphorylation of this residue in response to 20 mM D-glucose in control arterial lysates (**Figure 1C** and **Figure 1—figure supplement 1D**). However, this response was completely absent in arterial lysates exposed to 20 mM mannitol, thus ruling out any osmolarity effects (**Figure 1—figure supplement 1E**). Moreover, glucose-induced Ser¹⁹²⁸ phosphorylation was hindered in lysates from apyrase-treated arteries (**Figure 1C** and **Figure 1—figure supplement 1D**). These results suggest that elevated glucose increases Ser¹⁹²⁸ phosphorylation to potentiate LTCC activity through an autocrine mechanism involving secreted nucleotides.

To further test this possibility, LTCC activity was recorded in response to elevated glucose during continuous perfusion or static bath conditions (as above). The rationale for these experiments was to determine whether the wash out of nucleotides with flow can impact the glucose-induced potentiation of LTCCs. We found statistically similar I_{Ba} in cells exposed to 10 mM and 20 mM D-glucose under continuous bath perfusion (**Figure 1—figure supplement 2**). Conversely, I_{Ba} was significantly elevated in arterial myocytes exposed to 20 mM D-glucose when the bath perfusion was stopped (e.g. static bath conditions). These results suggest that secreted nucleotides could diffuse away under continuous flow, whereas under static bath conditions, they could accumulate in or around the area of release at the surface membrane of arterial myocytes to induce the optimal activation of the signaling pathway underlying increased LTCC activity in response to elevations in extracellular glucose.

P2Y₁₁ receptors are in close proximity to Ca_v1.2 and PKA_{cat} in arterial myocytes

Extracellular nucleotides are well-known activators of G-coupled P2Y receptors (*von Kügelgen and Harden, 2011*). P2Y₁₁ is a G_s-coupled P2Y receptor that could activate PKA (*Communi et al., 1997; Kennedy, 2017; Schuchardt et al., 2012; von Kügelgen and Harden, 2011*), and this could lead to enhanced Ser¹⁹²⁸ phosphorylation, LTCC activity, and vasoconstriction during diabetic hyperglycemia. Using Western blot analysis, we first validated the P2Y₁₁ antibody in tsA-201 cells, which endogenously express P2Y₁₁ (*Dreisig and Kornum, 2016*), by over-expressing human GFP-tagged P2Y₁₁ and by knocking down the endogenous and over-expressed receptor with specific P2Y₁₁ antisense oligodeoxynucleotides (ODNs) (**Figure 2A and B**). We subsequently detected an immunoreactive band of the expected molecular weight for P2Y₁₁ (~40 kDa) in lysates from freshly dissected human adipose arteries (**Figure 2C** and **Figure 2—figure supplement 1A**). This band seems specific for P2Y₁₁ since treatment of human arteries with specific human P2Y₁₁ antisense ODNs knocked

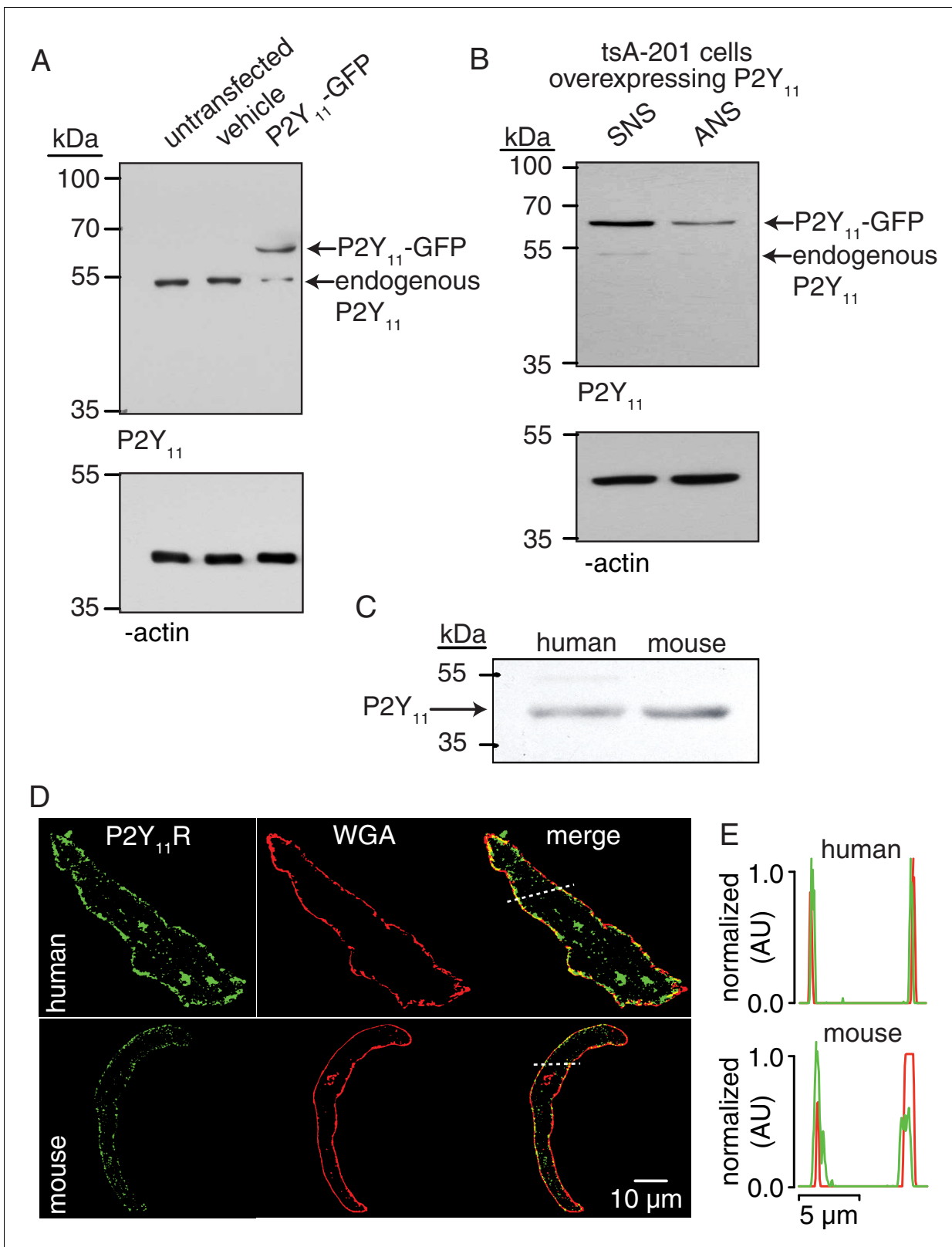


Figure 2. P2Y₁₁ protein and distribution in arterial myocytes. (A) Representative blot of immunoreactive bands of expected molecular weight for endogenous P2Y₁₁ (~40 kDa), overexpressed P2Y₁₁-GFP (~70 kDa), and β-actin (~43 kDa) in untransfected, vehicle-treated (empty transfection) and P2Y₁₁-GFP transfected tsA-201 cells (n = 3 lysates per condition). Note that tsA-201 cells endogenously express P2Y₁₁ (Dreisig and Kornum, 2016). (B) Representative blot of immunoreactive bands of expected molecular weight for endogenous P2Y₁₁ (~40 kDa), overexpressed P2Y₁₁-GFP (~70 kDa), and β-actin (~43 kDa) in SNS and ANS cells (n = 3 lysates per condition). (C) Representative blot of immunoreactive bands of expected molecular weight for endogenous P2Y₁₁ (~40 kDa) and β-actin (~43 kDa) in human and mouse arterial myocytes (n = 3 lysates per condition). (D) Immunofluorescence images of human and mouse arterial myocytes. P2Y₁₁ is shown in green, WGA (Wheat Germ Agglutinin) is shown in red, and merge is shown in yellow. Scale bar = 10 μm. (E) Line graphs showing normalized AU (Arbitrary Units) for human and mouse arterial myocytes. Scale bar = 5 μm.

Figure 2 continued

β -actin (~43 kDa) in tsA-cells transfected with P2Y₁₁-GFP as well as corresponding P2Y₁₁ sense (SNS) or antisense (ANS) ODNs (64% reduction in endogenous P2Y₁₁ expression in cells treated with ANS; 62% reduction in P2Y₁₁-GFP expression in P2Y₁₁-GFP-transfected cells treated with ANS; n = 3 lysates per condition; **Figure 2—source data 1**). (C) Representative immunoblot detection of P2Y₁₁ (~40 kDa) in lysates from human and wt mouse arteries (n = 3 arterial lysates per sample). (D) Representative confocal images of P2Y₁₁-associated fluorescence (green), wheat germ agglutinin (WGA, red) and merged channels in human (n = 11 cells from three humans) and wt mouse (n = 14 cells from three mice) arterial myocytes. (E) Line profile of the P2Y₁₁- and WGA-associated fluorescence from the area highlighted by the dotted lines in the representative human and mouse arterial myocytes in D.

DOI: <https://doi.org/10.7554/eLife.42214.013>

The following source data and figure supplements are available for figure 2:

Source data 1. Excel spreadsheet containing the individual numeric values of P2Y₁₁/ β -actin relative density corresponding to values reported in legend of **Figure 2B**.

DOI: <https://doi.org/10.7554/eLife.42214.016>

Figure supplement 1. Full-length blot for **Figure 2C**, knock down of P2Y₁₁ in arterial lysates, P2Y₁₁ immunoreactivity in isolated mouse arterial lysates, negative controls for immunofluorescence experiments in **Figure 2D** and P2Y₁₁ antibody control.

DOI: <https://doi.org/10.7554/eLife.42214.014>

Figure supplement 1—source data 1. Excel spreadsheet containing the individual numeric values of P2Y₁₁/ β -actin relative density analyzed in **Figure 2—figure supplement 1B**.

DOI: <https://doi.org/10.7554/eLife.42214.015>

down ~50% of the basal P2Y₁₁ protein abundance (**Figure 2—figure supplement 1B**). Confocal imaging and line profile analysis of P2Y₁₁-associated fluorescence and the plasma membrane marker wheat germ agglutinin (WGA) suggest a prominent distribution of the receptor on the surface membrane of freshly dissociated human arterial myocytes (**Figure 2D and E**). This was not observed when the antibody for P2Y₁₁ was omitted from the preparation (**Figure 2—figure supplement 1C**). These results suggest expression of P2Y₁₁ in human arterial myocytes. We observed comparable results in mouse arterial lysates and arterial myocytes, including detection and knock down with P2Y₁₁ ODNs of an immunoreactive band of the expected molecular weight for P2Y₁₁ (**Figure 2C and Figure 2—figure supplement 1A, B and D**). A band of ~110–120 kDa was observed in mouse arterial lysates, perhaps reflecting the formation of heterodimers between the P2Y₁₁ receptor itself or other purinergic/G protein-coupled receptors, as previously reported (**Barragán-Iglesias et al., 2015; Barragán-Iglesias et al., 2014; Ecke et al., 2008; Nishimura et al., 2016**). We also found expected distribution of P2Y₁₁-like-associated fluorescence at the surface membrane of mouse arterial myocytes (**Figure 2D and E**), which was not observed when the primary antibody was omitted or boiled (**Figure 2—figure supplement 1C and E**).

If P2Y₁₁ is involved in PKA-mediated activation of LTCCs in response to elevated glucose, we hypothesized that a subpopulation of these receptors should be localized in close proximity to Ca_v1.2 and PKA_{cat}. To test this possibility, we examined the spatial relationship of P2Y₁₁ with Ca_v1.2 and PKA_{cat} in freshly dissociated human arterial myocytes using GSD super-resolution nanoscopy in the Total Internal Reflection Fluorescence (TIRF) configuration. This approach achieves a lateral resolution of ~20 nm with selective illumination of the (sub)sarcolemmal region. Note that the FP1 antibody against Ca_v1.2 has been extensively validated by our group (**Buonarati et al., 2017; Hall et al., 2013; Nystoriak et al., 2017; Patriarchi et al., 2016**). The PKA_{cat} antibody was validated in arterial myocytes by pre-absorption with a blocking peptide (**Figure 3—figure supplement 1**). The GSD super-resolution localization maps (**Figure 3A and B, bottom panels**) for P2Y₁₁, Ca_v1.2, and PKA_{cat} obtained from conventional TIRF images (**Figure 3A and B, top panels**) showed that these proteins form clusters of various sizes (**Figure 3C**) and density (**Figure 3D**) at the sarcolemma of human arterial myocytes. Whereas clusters were broadly expressed throughout the sarcolemma, merged spatial maps of P2Y₁₁ with Ca_v1.2 or PKA_{cat} suggested a close association between a subset of these proteins (**Figure 3E and F**). Indeed, histograms of the P2Y₁₁-to-nearest Ca_v1.2 or PKA_{cat} distances revealed that the closest centroids for P2Y₁₁-Ca_v1.2 and P2Y₁₁-PKA_{cat} were at 59 nm and 58 nm, respectively (**Figure 3G and H**). Similar results were observed using freshly dissociated mouse cerebral arterial myocytes (**Figure 3—figure supplement 2**). Clusters of P2Y₁₁, Ca_v1.2, or PKA_{cat} were never observed when primary antibodies were omitted from the human or mouse preparation (**Figure 3—figure supplement 3A and B**). To determine whether the interaction between a

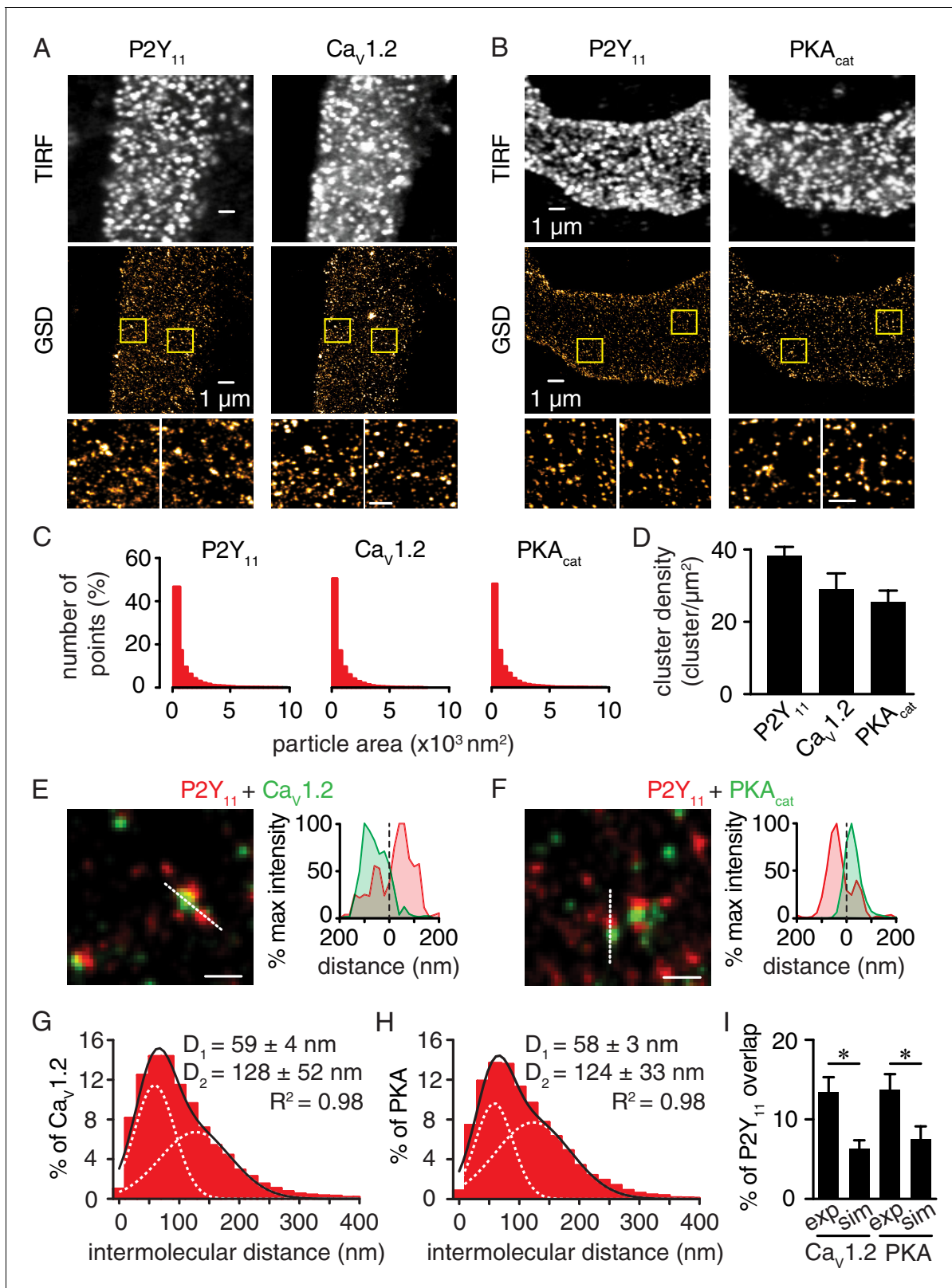


Figure 3. Nanometer organization of P2Y₁₁ with Ca_v1.2 and PKA_{cat} in human arterial myocytes. Representative conventional TIRF images (top) and corresponding GSD reconstruction maps (bottom) from human arterial myocytes labeled for (A) P2Y₁₁ and Ca_v1.2 and (B) P2Y₁₁ and PKA_{cat}. Lower panels display enhanced magnifications of areas shown in yellow boxes (scale bar, 400 nm). (C) Histograms of the area of P2Y₁₁, Ca_v1.2 and PKA_{cat} clusters in isolated human arterial myocytes (1621 ± 29 , 1209 ± 16 and 1322 ± 20 nm², respectively; **Figure 3—source data 1**). (D) Bar plot of cluster density. *Figure 3 continued on next page*

Figure 3 continued

density for P2Y₁₁, Ca_v1.2 and PKA_{cat} (38 ± 2 , 29 ± 4 , and 25 ± 3 clusters/ μm^2 , respectively; **Figure 3—source data 2**). Enlarged merged image (left) and associated x-y fluorescence intensity profile (right) from area highlighted by the dotted lines of sites of close proximity between (E) P2Y₁₁ (red) and Ca_v1.2 (green) and (F) P2Y₁₁ (red) and PKA_{cat} (green) (scale bar, 200 nm). Histograms of the lowest intermolecular distance to P2Y₁₁ centroids for (G) Ca_v1.2 (n = 19,611 particles from 6 cells; **Figure 3—source data 3**) and (H) PKA_{cat} (n = 22,425 particles from 6 cells; **Figure 3—source data 4**) fluorescence particles. Data were fit with a sum of two Gaussian functions with depicted R² and centroids. (I) Bar plot of % overlap of P2Y₁₁ with Ca_v1.2 or PKA_{cat} for experimental (Ca_v1.2: n = 36 segments from 12 cells; PKA_{cat}: n = 22 segments from 11 cells) and randomized simulations images (Ca_v1.2: n = 6 segments from 6 cells; PKA_{cat}: n = 6 segments from 6 cells) (*p<0.05, unpaired t test with Welch's correction; **Figure 3—source data 5**).

DOI: <https://doi.org/10.7554/eLife.42214.017>

The following source data and figure supplements are available for figure 3:

Source data 1. Excel spreadsheet containing the individual numeric values of frequency distribution histograms for cluster area in **Figure 3C**.

DOI: <https://doi.org/10.7554/eLife.42214.025>

Source data 2. Excel spreadsheet containing the individual numeric values for cluster density in **Figure 3D**.

DOI: <https://doi.org/10.7554/eLife.42214.026>

Source data 3. Excel spreadsheet containing the individual numeric values of frequency distribution histograms for intermolecular distance in **Figure 3G**.

DOI: <https://doi.org/10.7554/eLife.42214.027>

Source data 4. Excel spreadsheet containing the individual numeric values of frequency distribution histograms for intermolecular distance in **Figure 3H**.

DOI: <https://doi.org/10.7554/eLife.42214.028>

Source data 5. Excel spreadsheet containing the individual numeric values for % of P2Y₁₁ overlap in **Figure 3I**.

DOI: <https://doi.org/10.7554/eLife.42214.029>

Figure supplement 1. Validation for PKA_{cat} primary antibody.

DOI: <https://doi.org/10.7554/eLife.42214.018>

Figure supplement 2. Nanometer organization of P2Y₁₁, Ca_v1.2 and PKA_{cat} in murine arterial myocytes.

DOI: <https://doi.org/10.7554/eLife.42214.019>

Figure supplement 2—source data 1. Excel spreadsheet containing the individual numeric values of frequency distribution histograms for cluster area in **Figure 3—figure supplement 2C**.

DOI: <https://doi.org/10.7554/eLife.42214.020>

Figure supplement 2—source data 2. Excel spreadsheet containing the individual numeric values for cluster density in **Figure 3—figure supplement 2D**.

DOI: <https://doi.org/10.7554/eLife.42214.021>

Figure supplement 2—source data 3. Excel spreadsheet containing the individual numeric values of frequency distribution histograms for intermolecular distance in **Figure 3—figure supplement 2G**.

DOI: <https://doi.org/10.7554/eLife.42214.022>

Figure supplement 2—source data 4. Excel spreadsheet containing the individual numeric values of frequency distribution histograms for intermolecular distance in **Figure 3—figure supplement 2H**.

DOI: <https://doi.org/10.7554/eLife.42214.023>

Figure supplement 3. Negative controls for GSD images in human and murine arterial myocytes, and experimental and randomized reconstruction maps.

DOI: <https://doi.org/10.7554/eLife.42214.024>

subpopulation of P2Y₁₁ with a pool of Ca_v1.2 and PKA in arterial myocytes is the result of specific organization between two proteins, we compared the percentage of P2Y₁₁ and Ca_v1.2/PKA_{cat} overlap between experimental super-resolution localization maps and images containing randomized distribution of P2Y₁₁, Ca_v1.2 and PKA_{cat}. Randomized images for P2Y₁₁-Ca_v1.2 and P2Y₁₁-PKA_{cat} were generated based on data derived from the experimental super-resolution localization maps for these pairs of proteins using the Coste's randomization algorithm included in the JACoP plug-in in ImageJ (**Bolte and Cordelières, 2006**). Our analysis found that the percentage of overlap between P2Y₁₁-Ca_v1.2 and P2Y₁₁-PKA_{cat} obtained from the experimental localization maps was significantly higher than that observed for a simulated random distribution between P2Y₁₁-Ca_v1.2 and P2Y₁₁-PKA_{cat} (**Figure 3I** and **Figure 3—figure supplement 3C**). These results suggest an intimate association between subpopulations of P2Y₁₁-Ca_v1.2 and P2Y₁₁-PKA_{cat}.

We used the proximity ligation assay (PLA) as an additional analytical tool to examine the association between P2Y₁₁ and Ca_v1.2 or PKA_{cat}. PLA fluorescence puncta are only observed if proteins of interest are 40 nm or less apart (**Fredriksson et al., 2002**). We have extensively validated this approach in previous studies (**Nieves-Cintrón et al., 2017**; **Nystoriak et al., 2017**). Whereas PLA signals were absent when at least one primary antibody was omitted (**Figure 4—figure supplement**

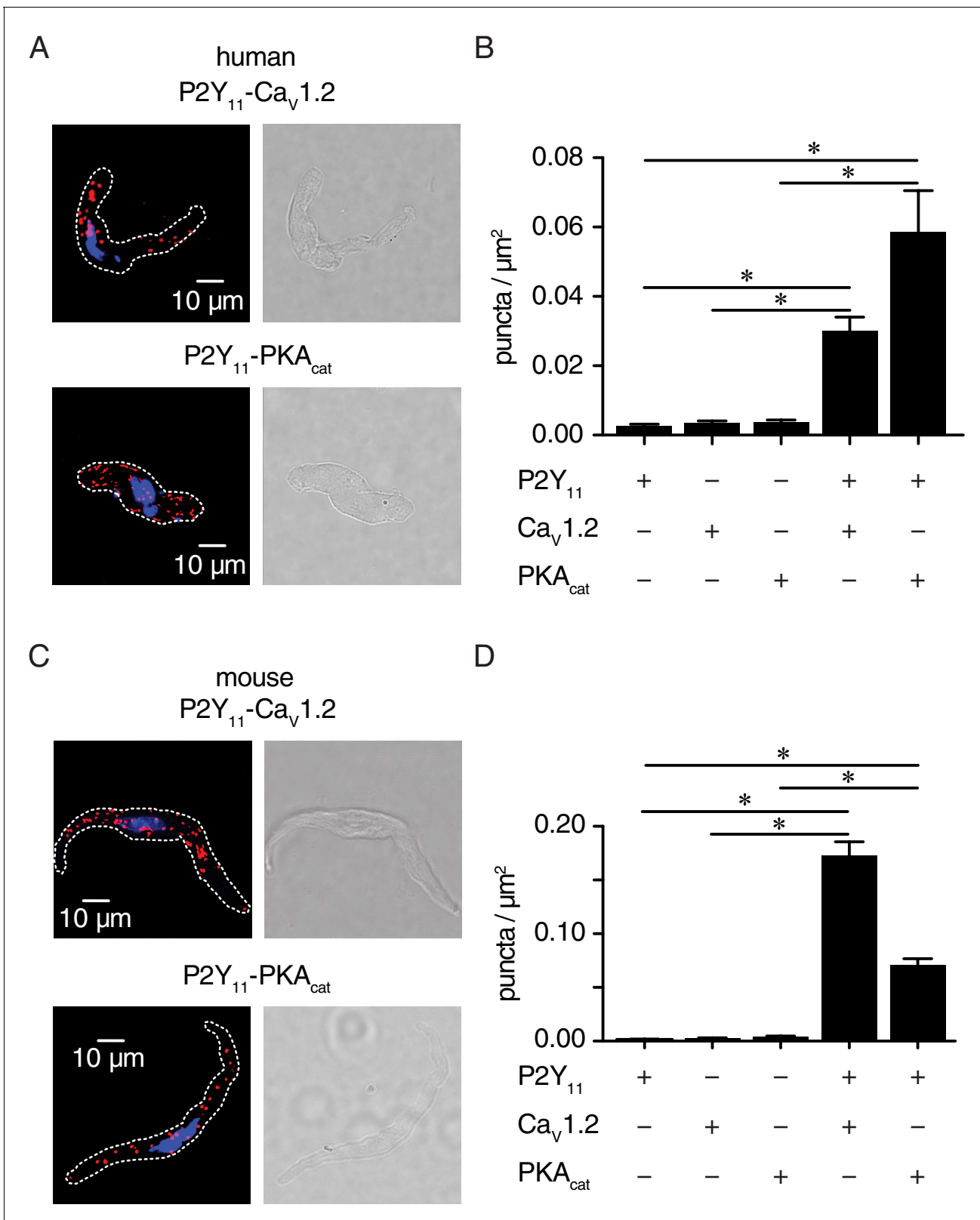


Figure 4. P2Y₁₁ associates with Ca_v1.2 and PKA_{cat} in human and murine arterial myocytes. (A) Exemplary fluorescence PLA (red)/DAPI (blue) and differential interference contrast (right) images of human arterial myocytes labeled for P2Y₁₁ + Ca_v1.2 and P2Y₁₁ + PKA_{cat}. (B) Quantification of PLA fluorescent puncta per cell area (puncta/μm²) for human arterial myocytes labeled for P2Y₁₁ (n = 26 cells from three human samples), Ca_v1.2 (n = 20 cells from three humans), PKA_{cat} (n = 17 cells from three humans), P2Y₁₁ + Ca_v1.2 (n = 23 cells from three humans), and P2Y₁₁ + PKA_{cat} (n = 20 cells from three humans). (C) Exemplary fluorescence PLA (red)/DAPI (blue) and differential interference contrast (right) images of mouse arterial myocytes labeled for P2Y₁₁ + Ca_v1.2 and P2Y₁₁ + PKA_{cat}. (D) Quantification of PLA fluorescent puncta per cell area (puncta/μm²) for mouse arterial myocytes labeled for P2Y₁₁ (n = 26 cells from three mouse samples), Ca_v1.2 (n = 20 cells from three mice), PKA_{cat} (n = 17 cells from three mice), P2Y₁₁ + Ca_v1.2 (n = 23 cells from three mice), and P2Y₁₁ + PKA_{cat} (n = 20 cells from three mice). Asterisks indicate significant differences between the first three bars and the last two bars in each graph.

Figure 4 continued on next page

Figure 4 continued

from three humans) (* $p < 0.05$, Kruskal-Wallis with Dunn's multiple comparisons; **Figure 4—source data 1**). (C) Representative fluorescence PLA (red)/DAPI (blue) and differential interference contrast (right) images of mouse arterial myocytes labeled for P2Y₁₁ + Ca_v1.2 and P2Y₁₁ + PKA_{cat}. (D) Quantification of PLA fluorescent puncta per μm^2 cell area for mouse arterial myocytes labeled for P2Y₁₁ (n = 44 cells from six mice), Ca_v1.2 (n = 15 cells from six mice), PKA_{cat} (n = 19 cells from six mice), P2Y₁₁ + Ca_v1.2 (n = 25 cells from six mice), and P2Y₁₁ + PKA_{cat} (n = 29 cells from six mice) (* $p < 0.05$, Kruskal-Wallis with Dunn's multiple comparisons; **Figure 4—source data 2**).

DOI: <https://doi.org/10.7554/eLife.42214.030>

The following source data and figure supplement are available for figure 4:

Source data 1. Excel spreadsheet containing the individual numeric values of puncta/ μm^2 graphs in **Figure 4B**.

DOI: <https://doi.org/10.7554/eLife.42214.032>

Source data 2. Excel spreadsheet containing the individual numeric values of puncta/ μm^2 graphs in **Figure 4D**.

DOI: <https://doi.org/10.7554/eLife.42214.033>

Figure supplement 1. Negative controls for PLA in human and murine arterial myocytes.

DOI: <https://doi.org/10.7554/eLife.42214.031>

1), robust fluorescent puncta were detected in human (**Figure 4A and B**) and mouse (**Figure 4C and D**) arterial myocytes co-labeled for P2Y₁₁ and Ca_v1.2 or P2Y₁₁ and PKA_{cat}. Altogether, these results suggest that human P2Y₁₁ or mouse P2Y₁₁-like receptors are located on the surface membrane of arterial myocytes within nanometer proximity ($\sim \leq 40$ nm) of a subpopulation of Ca_v1.2 and PKA_{cat}.

Increased sarcolemmal cAMP synthesis in arterial myocytes in response to a P2Y₁₁ agonist recapitulates glucose effects

P2Y₁₁ can stimulate adenylyl cyclase (AC) activity to produce cAMP (**Communi et al., 1997; Kennedy, 2017; Schuchardt et al., 2012; von Kügelgen and Harden, 2011**). Thus, we first used a membrane-targeted Epac1-camps-based FRET sensor (ICUE3-PM) (**Allen et al., 2006; Liu et al., 2011**) expressed in tsA-201 cells to validate the P2Y₁₁ pharmacology (**Figure 5—figure supplement 1A**) (**Dreisig and Kornum, 2016**). As expected, the highly selective P2Y₁₁ agonist NF546 (500 nM) (**Meis et al., 2010**) increased cAMP synthesis in these cells. This NF546-induced cAMP response remained intact in cells pretreated with either selective P2Y₁ (10 μM MRS2179) or P2Y₆ (100 nM MRS2578) inhibitors but was prevented in cells exposed to the selective P2Y₁₁ inhibitor NF340 (10 μM ; 500-fold more selective for P2Y₁₁ than other P2Y receptors) (**Meis et al., 2010**).

We recapitulated the NF546-induced cAMP response and its ablation by pretreatment with NF340 in primary, unpassaged human arterial myocytes expressing the ICUE3-PM sensor (**Figure 5A and B**). Increasing D-glucose concentration from 5 mM to 15 mM, which are glucose concentrations comparable to those observed in nondiabetic and diabetic patients respectively, induced a small yet significant increase in cAMP synthesis in human cells (**Figure 5A and B**). The glucose effects are not due to osmotic changes as equimolar concentrations of the non-permeable mannitol did not induce any cAMP synthesis (**Figure 5—figure supplement 1B**). As expected, the synthesis of cAMP was further amplified by the broad AC activator forskolin (1 μM) (**Figure 5A**) even in the presence of 20 mM mannitol (**Figure 5—figure supplement 1B**). Simultaneous application of 15 mM D-glucose +NF546 resulted in cAMP synthesis of a similar magnitude to that induced by independent treatments (**Figure 5A and B**). This suggests that the effects of elevated glucose and the NF546 compound may be acting through a similar pathway that requires activation of P2Y₁₁. Consistent with this notion, application of NF546 by itself or 15 mM D-glucose +NF546 failed to induce cAMP synthesis in cells pretreated with NF340 (**Figure 5A and B**). Yet forskolin, which bypasses P2Y₁₁, was still able to stimulate global cAMP production. Similar results were observed in murine arterial myocytes expressing the ICUE3-PM sensor (**Figure 5C and D** and **Figure 5—figure supplement 1C**). Intriguingly, cAMP synthesis in response to elevated glucose and the P2Y₁₁ agonist NF546 was significantly larger in human myocytes compared to mouse cells (glucose: 0.077 ± 0.003 in human vs 0.045 ± 0.002 in mouse; NF546: 0.083 ± 0.005 in human vs 0.045 ± 0.004 in mouse; $p < 0.05$). The reasons for this are currently unclear but may include intrinsic differences associated with species (human vs mouse), blood vessels (human adipose arteries vs mouse aortae) and expression patterns of the biosensor in human vs mouse cells (**Reddy et al., 2018**), as well as variations in protein expression and receptor/enzyme activity (e.g. P2Y₁₁, AC and PDE expression/activity) in human vs mouse arterial myocytes. Whether either or all of these factors contribute to distinctive

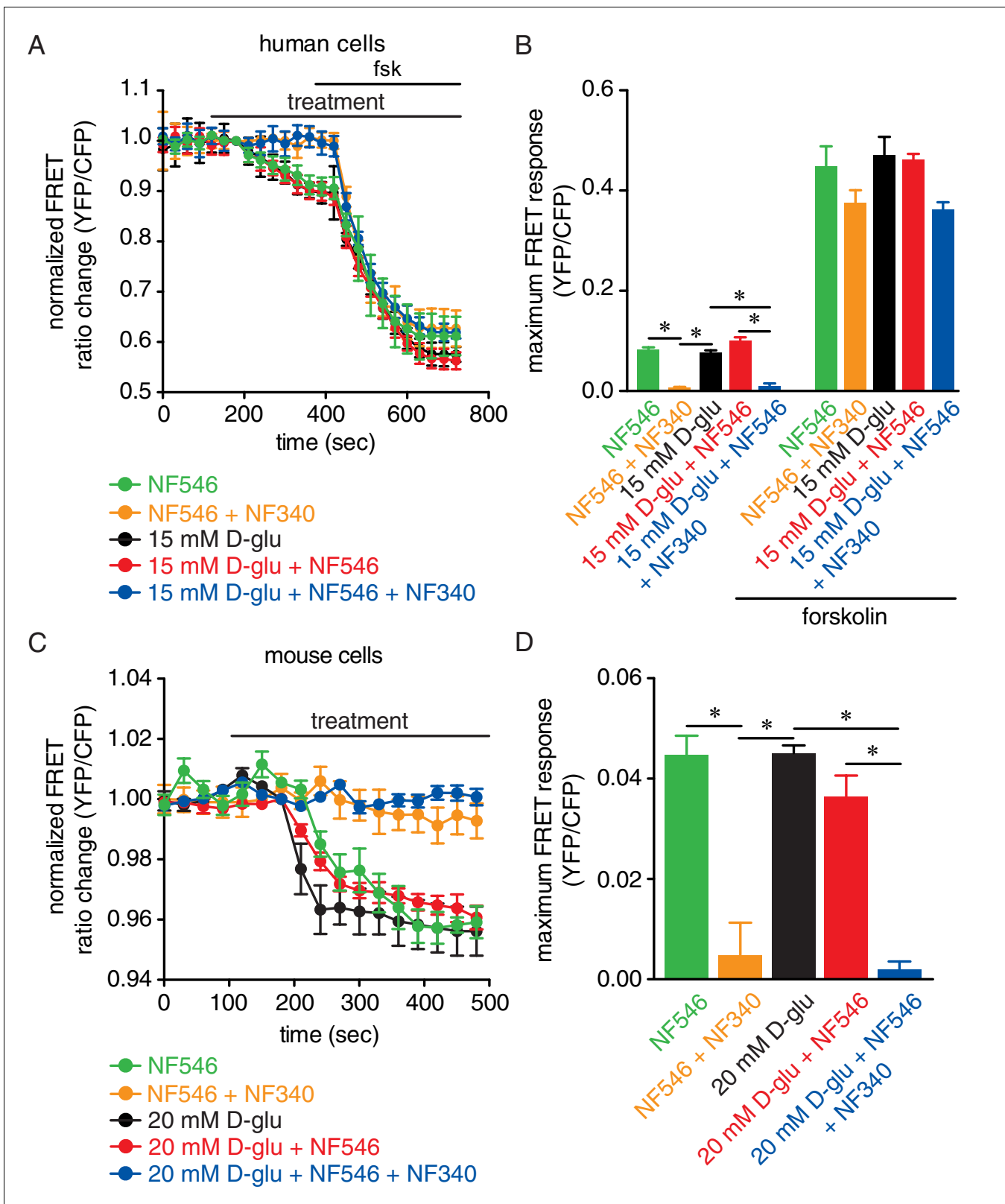


Figure 5. Glucose and the P2Y₁₁ agonist NF546 increase sarcolemmal cAMP synthesis in arterial myocytes, and these effects are prevented by the P2Y₁₁ antagonist NF340. (A) Time course of YFP/CFP (donor/acceptor) FRET ratios (normalized to resting levels before treatment) in human arterial myocytes expressing the ICUE3-PM biosensor in response to 15 mM D-glucose (black; n = 19 cells from two humans), 500 nM NF546 (green; n = 18 cells from two humans) and 15 mM D-glucose +500 nM NF546 (red; n = 14 cells from two humans) before and after application of broad adenylyl Figure 5 continued on next page

Figure 5 continued

cyclase agonist forskolin (1 μ M). In a set of experiments, cells were first pre-treated with the P2Y₁₁ antagonist NF340 (10 μ M) for at least 15–20 min before treatment with 500 nM NF546 (orange; n = 15 cells from two humans) and 15 mM D-glucose +500 nM NF546 (blue; n = 13 cells from two humans). Horizontal bars indicate treatment. Increases in cAMP production are represented by decreases in YFP/CFP ratio due to binding of cAMP to the biosensor. (B) Bar plot of maximum FRET responses (YFP/CFP) for human arterial myocytes in response to the indicated treatment (*p<0.05, Kruskal-Wallis with Dunn's multiple comparisons; **Figure 5—source data 1**). Statistical differences were compared between 15 mM D-glucose vs NF546, 15 mM D-glucose vs 15 mM D-glucose +NF546, 15 mM D-glucose vs NF546 +NF340, 15 mM D-glucose vs 15 mM D-glucose +NF546+NF340, NF546 vs NF546 +NF340, NF546 vs 15 mM D-glucose +NF546, NF546 vs 15 mM D-glucose +NF546+NF340, 15 mM D-glucose +NF546 vs 15 mM D-glucose +NF546+NF340. (C) Time course of YFP/CFP (donor/acceptor) FRET ratios (normalized to resting levels before treatment) in mouse arterial myocytes expressing the ICUE3-PM biosensor in response to 20 mM D-glucose (black; n = 83 cells from three mice), 500 nM NF546 (green; n = 13 cells from three mice) and 20 mM D-glucose +500 nM NF546 (red; n = 13 cells from three mice). Horizontal bars indicate treatment. In a set of experiments, cells were first pre-treated with the P2Y₁₁ antagonist NF340 (10 μ M) for at least 15–20 min before treatment with 500 nM NF546 (orange; n = 17 cells from three mice) and 20 mM D-glucose +500 nM NF546 (blue; n = 18 cells from three mice). Increases in cAMP production are represented by decreases in YFP/CFP ratio due to binding of cAMP to the biosensor. (D) Bar plot of maximum FRET responses (YFP/CFP) for mouse arterial myocytes in response to the indicated treatment (*p<0.05, Kruskal-Wallis with Dunn's multiple comparisons; **Figure 5—source data 2**). Statistical differences were compared between all datasets).

DOI: <https://doi.org/10.7554/eLife.42214.034>

The following source data and figure supplements are available for figure 5:

Source data 1. Excel spreadsheet containing the individual numeric values for maximum FRET responses in **Figure 5B**.

DOI: <https://doi.org/10.7554/eLife.42214.039>

Source data 2. Excel spreadsheet containing the individual numeric values for maximum FRET responses in **Figure 5D**.

DOI: <https://doi.org/10.7554/eLife.42214.040>

Figure supplement 1. The P2Y₁₁ agonist NF546 increases cAMP and this is blocked in the presence of the P2Y₁₁ inhibitor NF340 but not with the P2Y₁ inhibitor MSR2179 or P2Y₆ inhibitor MRS2578 in tsA-201 cells, and no increases in cAMP in arterial myocytes with mannitol.

DOI: <https://doi.org/10.7554/eLife.42214.035>

Figure supplement 1—source data 1. Excel spreadsheet containing the individual numeric values for maximum FRET responses in **Figure 5—figure supplement 1A**.

DOI: <https://doi.org/10.7554/eLife.42214.036>

Figure supplement 1—source data 2. Excel spreadsheet containing the individual numeric values for maximum FRET responses in **Figure 5—figure supplement 1B**.

DOI: <https://doi.org/10.7554/eLife.42214.037>

Figure supplement 1—source data 3. Excel spreadsheet containing the individual numeric values for maximum FRET responses in **Figure 5—figure supplement 1C**.

DOI: <https://doi.org/10.7554/eLife.42214.038>

cAMP responses in human vs mouse arterial myocytes as well as their physiological implications remain to be determined. Nevertheless, our findings suggest a role for human P2Y₁₁ and mouse P2Y₁₁-like receptors in glucose-induced cAMP synthesis.

The P2Y₁₁ inhibitor NF340 prevents glucose-induced Ser¹⁹²⁸ phosphorylation, LTCC activity and vasoconstriction

In our next series of experiments, we confirmed the glucose-induced increase in I_{Ba} detected in mouse arterial myocytes (**Figure 1B**) using freshly dissociated human arterial myocytes in which external glucose was elevated from 5 mM to 15 mM (**Figure 6A and B**). These results indicate that elevations in extracellular glucose also stimulate LTCC activity in human arterial myocytes (**Nystoriak et al., 2017**). The increase in I_{Ba} evoked by 15 mM D-glucose was prevented in human cells pretreated with NF340 (**Figure 6A and B**). Glucose-induced potentiation of I_{Ba} was also prevented in mouse arterial myocytes pretreated with NF340 (**Figure 6C and D**). However, inhibition of P2Y₆ receptors with MRS2578, which has been implicated in myogenic tone regulation and glucose-induced NFAT activation in arterial myocytes (**Brayden et al., 2013; Nilsson et al., 2006**), failed to stop the increase in I_{Ba} in response to 20 mM D-glucose (**Figure 6C and D**). Note that basal I_{Ba} were similar in cells exposed to 10 mM D-glucose and 10 mM D-glucose +MRS2578, suggesting that inhibition of P2Y₆ did not alter basal LTCC activity (**Figure 6C and D**). Altogether, these results suggest that P2Y₆ receptors are not involved in glucose-induced potentiation of LTCC activity, and that these glucose effects are prevented with a P2Y₁₁ inhibitor.

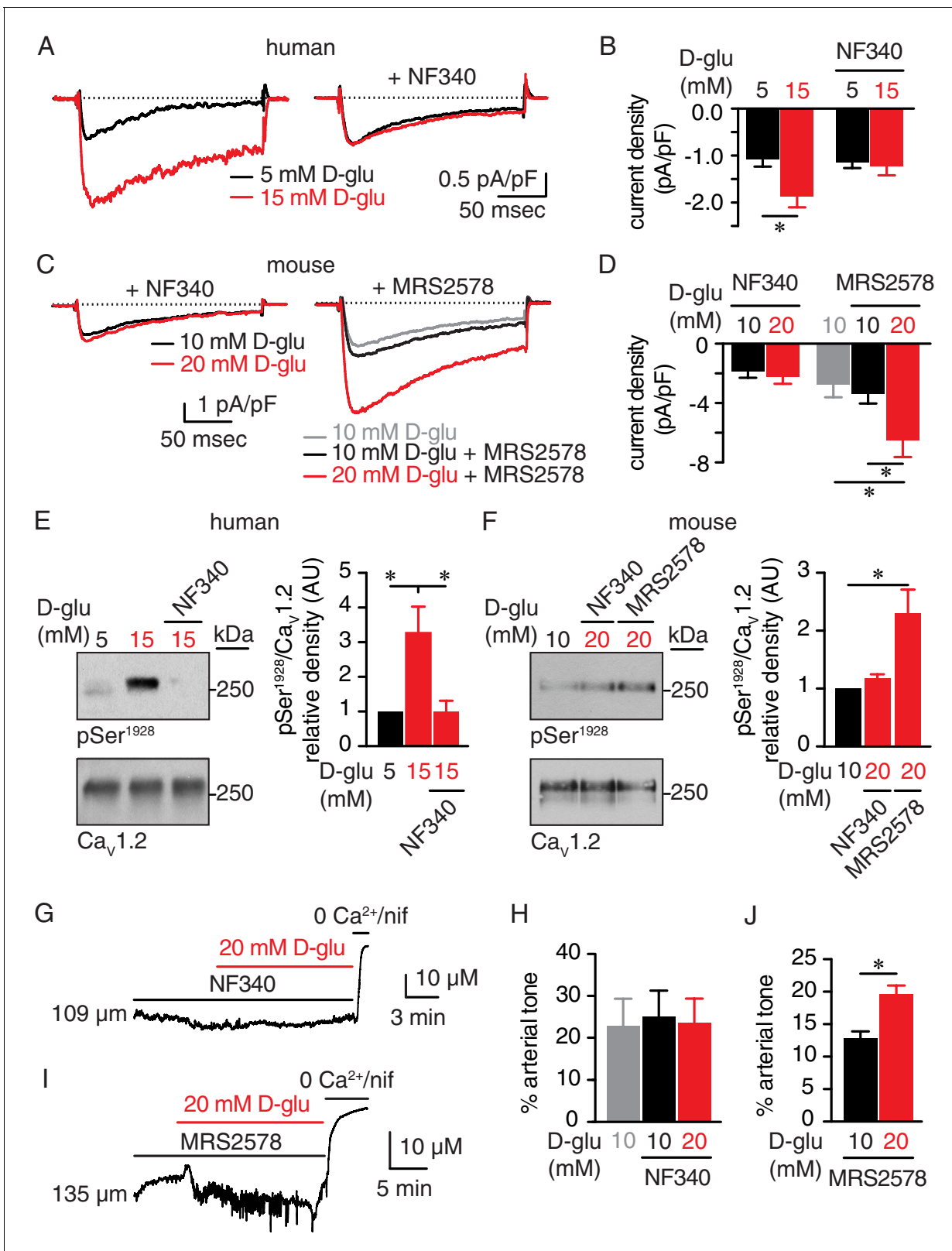


Figure 6. The P2Y₁₁ inhibitor NF340 prevents glucose-induced elevations in Ser¹⁹²⁸ phosphorylation, LTCC activity, and vasoconstriction in human and murine arterial myocytes. (A) Representative I_{Ba} recordings from the same cell and (B) summary current density data obtained from freshly dissociated human arterial myocytes before and after increasing extracellular D-glucose from 5 mM to 15 mM in the absence ($n = 12$ cells from six humans) and presence ($n = 10$ cells from five humans) of NF340 (10 μ M) (* $p < 0.05$, paired t test; **Figure 6—source data 1**). (C) Exemplary I_{Ba} traces from the same cell **Figure 6 continued on next page**

Figure 6 continued

and (D) amalgamated current density data recorded from mouse cerebral arterial myocytes treated with 10 μ M NF340 (n = 8 cells from three mice) or 100 nM MRS2578 (n = 7 cells from five mice) before and after increasing extracellular D-glucose from 10 mM to 20 mM (*p<0.05, Kruskal-Wallis with Dunn's multiple comparisons; **Figure 6—source data 2**). Representative immunoreactive bands for phosphorylated Ser¹⁹²⁸ (pSer¹⁹²⁸) and total Ca_v1.2 and densitometry for pSer¹⁹²⁸/Ca_v1.2 ratio in lysates from (E) human arteries exposed to 5 mM and 15 mM D-glucose in the absence and presence of 10 μ M NF340 (n = 6 arterial lysates per condition; *p<0.05, Kruskal-Wallis with Dunn's multiple comparisons; **Figure 6—source data 3**) and (F) mouse cerebral and mesenteric arteries exposed to 10 mM or 20 mM D-glucose in the presence of 10 μ M NF340 or 100 nM MRS2578 (n = 4 arterial lysates per condition; *p<0.05 Kruskal-Wallis with Dunn's multiple comparisons; **Figure 6—source data 4**). Representative diameter recordings and summary data from pressurized (60 mmHg) mouse cerebral arteries exposed to (G–H) 10 μ M NF340 (n = 4 arteries from four mice; Friedman with Dunn's multiple comparisons; **Figure 6—source data 5**) or (I–J) 100 nM MRS2578 (n = 7 arteries from seven mice; *p<0.05, Wilcoxon matched pair test; **Figure 6—source data 6**) before and after application of 20 mM D-glucose.

DOI: <https://doi.org/10.7554/eLife.42214.041>

The following source data and figure supplements are available for figure 6:

Source data 1. Excel spreadsheet containing the individual numeric values of current density analyzed in **Figure 6B**.

DOI: <https://doi.org/10.7554/eLife.42214.046>

Source data 2. Excel spreadsheet containing the individual numeric values of current density analyzed in **Figure 6D**.

DOI: <https://doi.org/10.7554/eLife.42214.047>

Source data 3. Excel spreadsheet containing the individual numeric values of pSer¹⁹²⁸/Ca_v1.2 relative density analyzed in **Figure 6E**.

DOI: <https://doi.org/10.7554/eLife.42214.048>

Source data 4. Excel spreadsheet containing the individual numeric values of pSer¹⁹²⁸/Ca_v1.2 relative density analyzed in **Figure 6F**.

DOI: <https://doi.org/10.7554/eLife.42214.049>

Source data 5. Excel spreadsheet containing the individual numeric values of % arterial tone analyzed in **Figure 6H** and corresponding raw diameters.

DOI: <https://doi.org/10.7554/eLife.42214.050>

Source data 6. Excel spreadsheet containing the individual numeric values of % arterial tone analyzed in **Figure 6J** and corresponding raw diameters.

DOI: <https://doi.org/10.7554/eLife.42214.051>

Figure supplement 1. Full-length blots for **Figure 6E and F**, high K⁺ induced constriction in arteries pretreated with NF340 and MRS2578 corresponding to data in **Figure 6**, and glucose-induced vasoconstriction is not prevented or inhibited by a selective P2Y₁ antagonist.

DOI: <https://doi.org/10.7554/eLife.42214.042>

Figure supplement 1—source data 1. Excel spreadsheet containing the individual numeric values of 60 mM K⁺-induced % constriction analyzed in **Figure 6—figure supplement 1C**.

DOI: <https://doi.org/10.7554/eLife.42214.043>

Figure supplement 1—source data 2. Excel spreadsheet containing the individual numeric values of % arterial tone analyzed in **Figure 6—figure supplement 1D** and corresponding raw diameters.

DOI: <https://doi.org/10.7554/eLife.42214.044>

Figure supplement 1—source data 3. Excel spreadsheet containing the individual numeric values of % arterial tone analyzed in **Figure 6—figure supplement 1E** and corresponding raw diameters.

DOI: <https://doi.org/10.7554/eLife.42214.045>

Since the P2Y₁₁ inhibitor hindered the glucose effects on LTCC activity, we also explored whether the NF340 compound interfered with the Ser¹⁹²⁸ phosphorylation state of the channel and vascular reactivity in response to hyperglycemia. As observed in mouse arteries (**Figure 1C**), we found that elevating extracellular glucose significantly increased Ser¹⁹²⁸ phosphorylation in human arterial lysates (**Figure 6E**; **Figure 6—figure supplement 1A**). Yet, this glucose-mediated increase in Ser¹⁹²⁸ phosphorylation was prevented if arterial lysates were pretreated with NF340, whereas phosphorylation still occurred if arterial lysates were pretreated with the P2Y₆ inhibitor MRS2578 (**Figure 6E and F**, and **Figure 6—figure supplement 1A and B**). Furthermore, vasoconstriction in response to elevated glucose was blocked in pressurized (60 mmHg) mouse cerebral arteries exposed to NF340 (**Figure 6G and H** and **Supplementary file 2**) but not to MRS2578 (**Figure 6I and J** and **Supplementary file 2**). Note that while arterial tone was similar in control and NF340-treated arteries, it was reduced in arteries exposed to MRS2578 (**Figure 6I and J**), which is in line with recent data showing that P2Y₆ is a sensor of pressure-induced constriction (**Brayden et al., 2013**). Vasoconstriction in response to 60 mM K⁺ was similar in control and NF340 as well as MRS2578-treated arteries (**Figure 6—figure supplement 1C** and **Supplementary file 1 and 2**). We also evaluated a potential role for P2Y₁ receptors in stimulating PKA-mediated vasoconstriction as these receptors have been suggested to crosstalk with P2Y₁₁ to regulate their function in HEK cells and neurons (**del Puerto et al., 2012**; **King and Townsend-Nicholson, 2008**). Data revealed that the glucose-

induced vasoconstriction was not altered by adding the selective P2Y₁ inhibitor MRS2179 (10 μM) either before or after 20 mM D-glucose stimulation (**Figure 6—figure supplement 1D and E** and **Supplementary file 1 and 2**). These results suggest that the P2Y₁ receptor is not involved in glucose-mediated vasoconstriction. Together, these data demonstrate the effectiveness of a P2Y₁₁ inhibitor in blocking the remodeling of Ser¹⁹²⁸ phosphorylation and LTCC activity that mediates vasoconstriction in response to elevated glucose.

The P2Y₁₁ agonist NF546 stimulates Ser¹⁹²⁸ phosphorylation, PKA-dependent LTCC activity and vasoconstriction

We next investigated whether a selective P2Y₁₁ agonist could recapitulate the glucose-mediated Ser¹⁹²⁸ phosphorylation and PKA-dependent LTCC activity. Using freshly dissociated human arterial myocytes, we found that I_{Ba} was significantly increased by application of NF546 (**Figure 7A**). This P2Y₁₁ agonist also increased I_{Ba} at multiple membrane potentials in mouse arterial myocytes with no change in the current-voltage (I-V) relationship (V_{max} = 14.9 ± 2.0 mV for 10 mM D-glucose and V_{max} = 10.9 ± 1.1 mV for NF546; p=0.1085, extra sum-of-squares *F* test) (**Figure 7B**). The NF546-mediated increase in I_{Ba} was similar in magnitude to that induced by elevated glucose (**Figure 7—figure supplement 1A**). Similar I_{Ba} potentiation was also observed after application of the non-hydrolyzed ATP analog and potent P2Y₁₁ agonist ATPγS (1 μM; **Figure 7—figure supplement 1B**) (**von Kügelgen and Harden, 2011**). Note that ATPγS stimulates P2Y₁₁ activity with EC₅₀ that ranges from 31 nM to 23 μM, depending on readout, cell type and species used, but it is still a more potent activator than ATP itself (**Communi et al., 1999; Haas et al., 2014; Kennedy, 2017; Meis et al., 2010; Qi et al., 2001; Schuchardt et al., 2012; von Kügelgen and Harden, 2011**). We further correlated the potentiation in I_{Ba} by NF546 to an elevation of Ser¹⁹²⁸ phosphorylation in freshly dissected human and mouse arterial lysates (**Figure 7C** and **Figure 7—figure supplement 1C**). Since PKA is essential for glucose-mediated remodeling of I_{Ba} in arterial myocytes and can be activated downstream of P2Y₁₁ (**Navedo et al., 2010b; Nystoriak et al., 2017**), we also examined its involvement in NF546-mediated potentiation of LTCC activity in arterial myocytes. Consistent with a key role for PKA, NF546 failed to upregulate I_{Ba} in arterial myocytes incubated with the PKA inhibitors PKI (100 nM) or rpcAMP (10 μM) (**Figure 7D**).

Having established that application of the P2Y₁₁ agonist NF546 influences Ser¹⁹²⁸ phosphorylation state as well as LTCC activity, we investigated whether it could also modulate arterial tone. Accordingly, pressurized (60 mmHg) arteries that developed stable arterial tone and responded to 60 mM K⁺ (**Figure 7—figure supplement 1D** and **Supplementary file 1 and 2**) showed significant constriction upon NF546 application (**Figure 7E**). Interestingly, NF546 did not induce further constriction in wt arteries previously exposed to 20 mM D-glucose (**Figure 7F**). Indeed, arterial tone was similar in arteries treated with 20 mM D-glucose or 20 mM D-glucose +NF546 (**Supplementary file 1 and 2**). Confirming a critical role for Ser¹⁹²⁸, arteries from a S1928A knockin mouse in which phosphorylation of this Ca_v1.2 amino acid is prevented (**Lemke et al., 2008; Nystoriak et al., 2017; Qian et al., 2017**), failed to constrict to NF546 (**Figure 7F** and **Supplementary file 1 and 2**). Response of S1928A arteries to 60 mM K⁺ was similar to those observed for wt arteries (**Figure 7—figure supplement 1D** and **Supplementary file 1 and 2**). These results suggest that a P2Y₁₁ agonist can induce Ser¹⁹²⁸ phosphorylation, PKA-dependent LTCC potentiation and vasoconstriction, thus recapitulating glucose effects (**Navedo et al., 2010b; Nystoriak et al., 2017**), and providing further evidence of the involvement of human P2Y₁₁ and mouse P2Y₁₁-like receptors in these alterations.

Increased Ser¹⁹²⁸ phosphorylation and LTCC activity during chronic diabetic hyperglycemia are prevented by a P2Y₁₁ inhibitor

To explore whether a P2Y₁₁ inhibitor could prevent changes in Ser¹⁹²⁸ phosphorylation and LTCC activity during chronic diabetic hyperglycemia, we exposed isolated arteries for 48 hr to 10 mM D-glucose, 20 mM mannitol, 20 mM D-glucose or 20 mM D-glucose +NF340. This organ culture method prevents arterial myocyte phenotypic changes associated with prolonged culturing conditions. Furthermore, the exposure time is sufficient to induce many of the vascular remodeling phenomena associated with elevated glucose in arterial myocytes, including increased LTCC activity, decreased K⁺ channel activity and downstream activation of Ca²⁺-dependent transcription factors

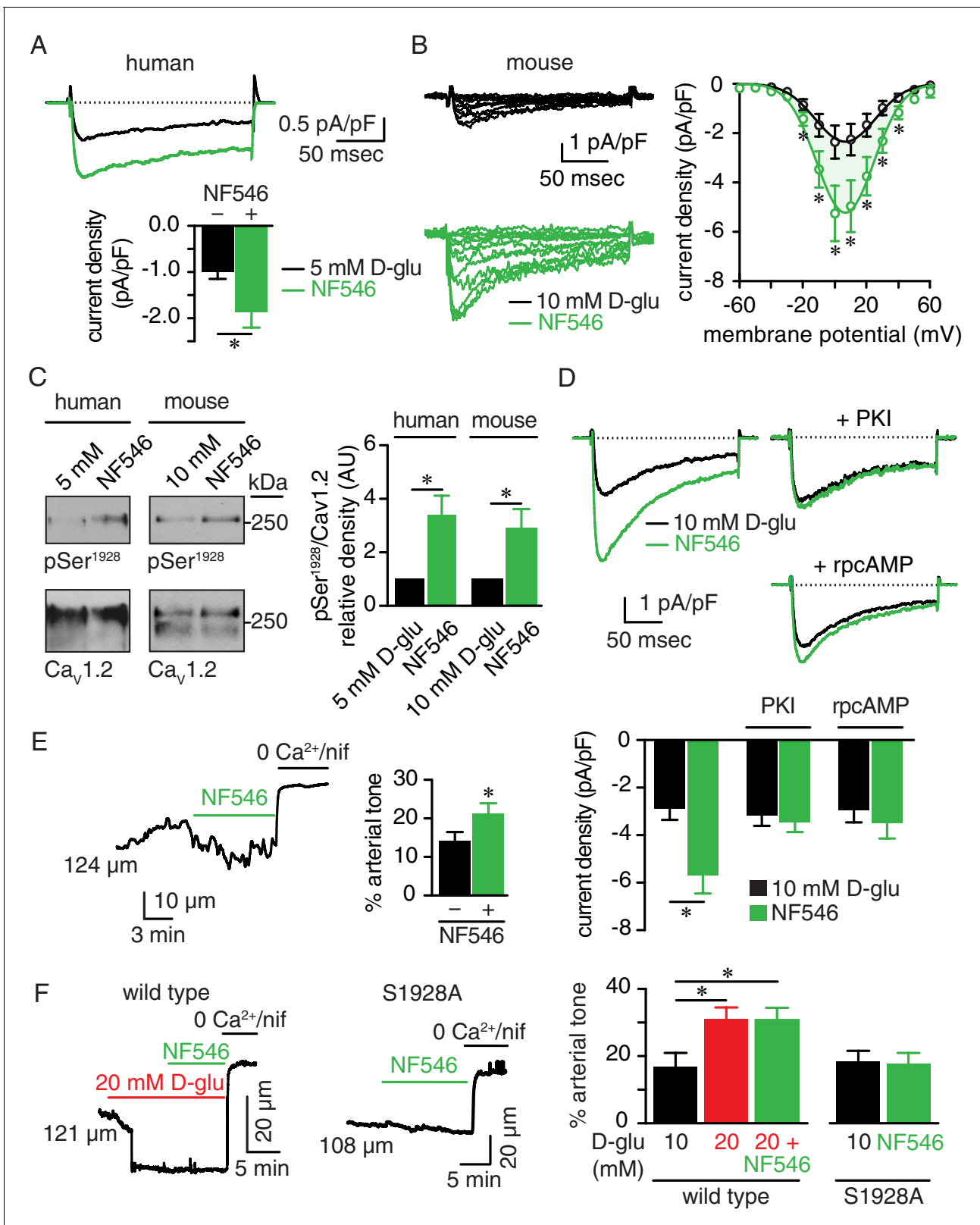


Figure 7. The P2Y₁₁ agonist NF546 increases Ser¹⁹²⁸ phosphorylation, LTCC activity, and induces vasoconstriction. (A) Representative I_{Ba} recordings from the same cell (top) and summary I_{Ba} data (bottom) from freshly dissociated human arterial myocytes in response to step depolarizations from -70 to +10 mV before and after application of 500 nM NF546 (n = 11 cells from five humans; *p<0.05, paired t test; **Figure 7—source data 1**). (B) Representative I_{Ba} recordings from the same cell (left) triggered by step depolarization from -70 mV to voltages ranging from -60 to +60 mV before **Figure 7 continued on next page**

Figure 7 continued

and after application of 500 nM NF546 in mouse cerebral arterial myocytes and corresponding I_{Ba} -voltage relationship (right) ($n = 8$ cells from five mice) ($*p < 0.05$, paired t test; **Figure 7—source data 2**). (C) Exemplary immunoblot detection of phosphorylated Ser¹⁹²⁸ (pSer¹⁹²⁸) and total Ca_v1.2 from human (left) and mouse cerebral and mesenteric arteries (right) incubated with 500 nM NF546 and respective densitometry quantification of pSer¹⁹²⁸/Ca_v1.2 ratio ($n = 6$ arterial lysates per condition for humans; $n = 6$ arterial lysates per condition for mice) ($*p < 0.05$, Wilcoxon matched pairs test; **Figure 7—source data 3**). (D) Representative I_{Ba} recordings from the same cell (top) and summary I_{Ba} data (bottom) from mouse arterial myocytes evoked by step depolarizations from -70 to $+10$ mV before and after application of 500 nM NF546 in the absence ($n = 9$ cells, four mice) and presence of 100 nM PKI ($n = 9$ cells, five mice) or 10 μ M rpcAMP ($n = 9$ cells, four mice) ($*p < 0.05$, paired t test; **Figure 7—source data 4**). (E) Representative diameter recording and summary arterial tone data from pressurized (60 mmHg) mouse cerebral arteries exposed to 500 nM NF546 ($n = 6$ arteries, six mice) ($*p < 0.05$, Wilcoxon matched pairs test; **Figure 7—source data 5**). (F) Representative diameter recordings and summary arterial tone data from pressurized (60 mmHg) wt mouse cerebral arteries exposed to 20 mM D-glucose before and after application of 500 nM NF546 ($n = 6$ arteries, six mice, left; $*p < 0.05$, Friedman with Dunn's multiple comparisons; **Figure 7—source data 6**) and S9128A mouse cerebral arteries after NF546 application ($n = 4$ from three mice, right; **Figure 7—source data 6**).

DOI: <https://doi.org/10.7554/eLife.42214.052>

The following source data and figure supplements are available for figure 7:

Source data 1. Excel spreadsheet containing the individual numeric values of current density analyzed in **Figure 7A**.

DOI: <https://doi.org/10.7554/eLife.42214.057>

Source data 2. Excel spreadsheet containing the individual numeric values of current density analyzed in **Figure 7B**.

DOI: <https://doi.org/10.7554/eLife.42214.058>

Source data 3. Excel spreadsheet containing the individual numeric values of pSer¹⁹²⁸/Ca_v1.2 relative density analyzed in **Figure 7C**.

DOI: <https://doi.org/10.7554/eLife.42214.059>

Source data 4. Excel spreadsheet containing the individual numeric values of current density analyzed in **Figure 7D**.

DOI: <https://doi.org/10.7554/eLife.42214.060>

Source data 5. Excel spreadsheet containing the individual numeric values of % arterial tone analyzed in **Figure 7E** and corresponding raw diameters.

DOI: <https://doi.org/10.7554/eLife.42214.061>

Source data 6. Excel spreadsheet containing the individual numeric values of % arterial tone analyzed in **Figure 7F** and corresponding raw diameters.

DOI: <https://doi.org/10.7554/eLife.42214.062>

Figure supplement 1. D-glucose and NF546 elicit changes in I_{Ba} of similar magnitude in mouse arterial myocytes, ATP γ S increases I_{Ba} in arterial myocytes, full-length blots corresponding to data in **Figure 7C**, and high K⁺-induced constriction in wt and S1928A arteries treated with NF546 corresponding to data in **Figure 7**.

DOI: <https://doi.org/10.7554/eLife.42214.053>

Figure supplement 1—source data 1. Excel spreadsheet containing the individual numeric values of change in current density analyzed in **Figure 7—figure supplement 1A**.

DOI: <https://doi.org/10.7554/eLife.42214.054>

Figure supplement 1—source data 2. Excel spreadsheet containing the individual numeric values of current density analyzed in **Figure 7—figure supplement 1B**.

DOI: <https://doi.org/10.7554/eLife.42214.055>

Figure supplement 1—source data 3. Excel spreadsheet containing the individual numeric values of 60 mM K⁺-induced % constriction analyzed in **Figure 7—figure supplement 1D**.

DOI: <https://doi.org/10.7554/eLife.42214.056>

(Navedo et al., 2010b; Nieves-Cintrón et al., 2015; Nilsson et al., 2006; Nystoriak et al., 2014; Nystoriak et al., 2017). LTCC function was assessed by measuring single-channel activity using the cell-attached configuration from dissociated arterial myocytes under each experimental condition described above. We found that wt cells isolated from the 20 mM D-glucose but not the 20 mM mannitol treated group had significantly enhanced LTCC open probability (nP_o) compared to those in the 10 mM D-glucose group (**Figure 8A and B**). This increase in LTCC activity during diabetic hyperglycemia, however, was prevented in arterial myocytes from arteries treated in the presence of the P2Y₁₁ inhibitor NF340. Ser¹⁹²⁸ phosphorylation was significantly elevated in arteries chronically exposed to 20 mM D-glucose, but this effect was completely abolished in the presence of NF340 (**Figure 8C and Figure 8—figure supplement 1A**). Consistent with a key role for Ser¹⁹²⁸ phosphorylation in potentiation of LTCC activity in response to chronic elevations in glucose, LTCC nP_o was similar in arterial myocytes from S1928A arteries incubated for 48 hr in 10 mM or 20 mM D-glucose (**Figure 8—figure supplement 1B**). These results suggest that treatment with a P2Y₁₁ inhibitor can

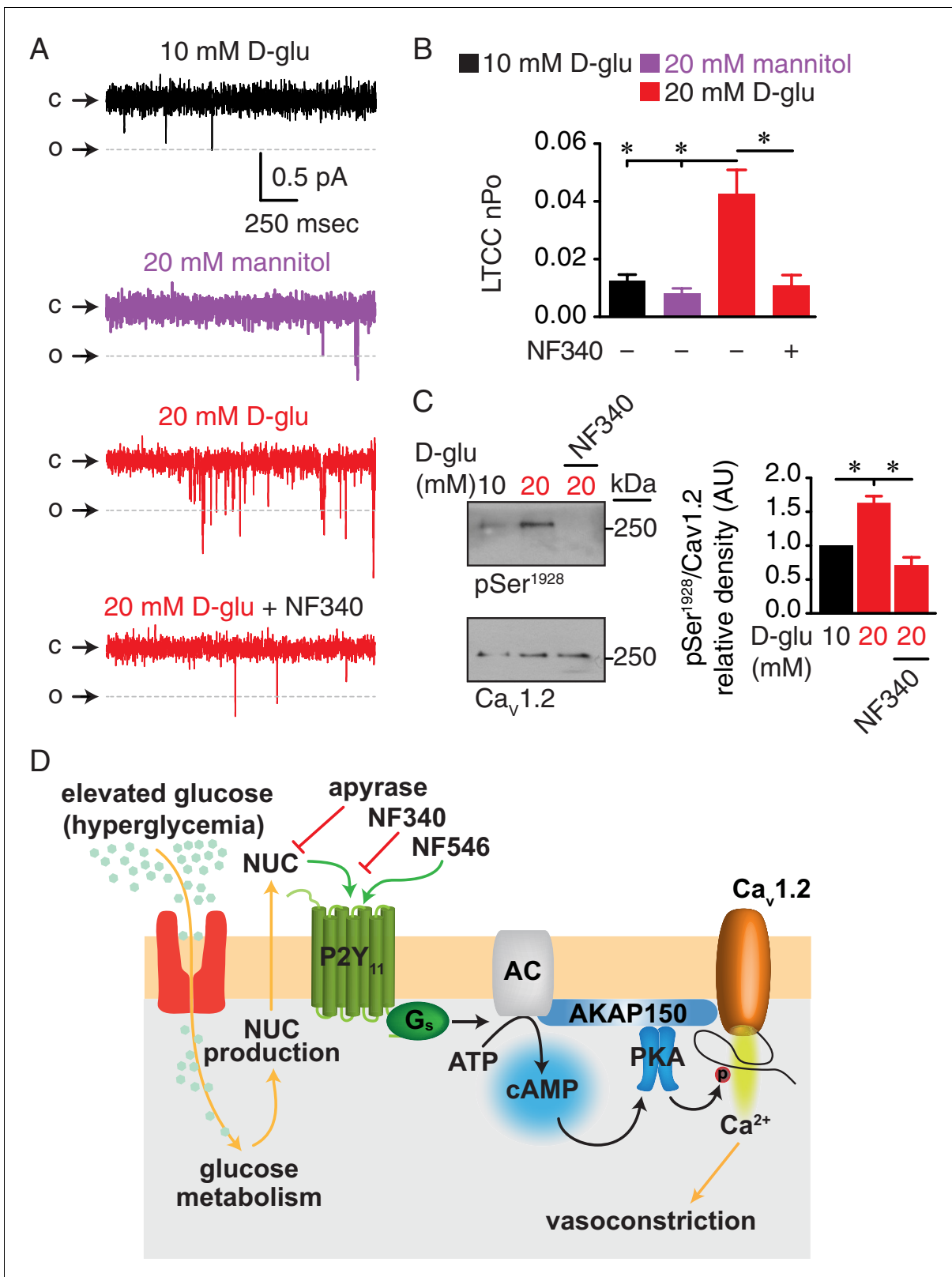


Figure 8. Augmented LTCC activity and Ser¹⁹²⁸ phosphorylation in response to chronic extracellular glucose elevations are prevented in the presence of the P2Y₁₁ antagonist NF340. (A) Representative single LTCC recordings obtained during a 2 s step depolarization from -80 to -30 mV and (B) bar plot of LTCC nP_o in arterial myocytes isolated from mouse cerebral arteries incubated for 48 hr in 10 mM D-glucose (n = 10 cells from three mice), 20 mM mannitol (n = 13 cells from four mice), 20 mM D-glucose (n = 10 cells from four mice) and 20 mM D-glucose + 10 μ M NF340 (n = 10 cells from four mice). (C) Western blots and bar plot showing pSer¹⁹²⁸/Cav1.2 relative density in arterial myocytes incubated for 48 hr in 10 mM D-glucose (n = 10 cells from three mice), 20 mM D-glucose (n = 10 cells from four mice) and 20 mM D-glucose + 10 μ M NF340 (n = 10 cells from four mice). (D) Schematic diagram of the signaling pathway. *Figure 8 continued on next page*

Figure 8 continued

mice). Channel openings (o) are represented by downward deflections from baseline (c) (* $p < 0.05$, one-way ANOVA with Tukey post hoc test; **Figure 8—source data 1**). (C) Representative immunoblot detection of phosphorylated Ser¹⁹²⁸ (pSer¹⁹²⁸) and total Ca_v1.2 from mouse cerebral and mesenteric arteries incubated for 48 hr in 10 mM D-glucose, 20 mM D-glucose and 20 mM D-glucose + 10 μ M NF340 and densitometry quantification of pSer¹⁹²⁸/Ca_v1.2 ratio (n = 7 arterial lysates per condition) (* $p < 0.05$, Kruskal-Wallis with Dunn's multiple comparisons; **Figure 8—source data 2**). (D) Proposed model for the role of P2Y₁₁ in PKA-dependent stimulation of LTCC activity and vasoconstriction during diabetic hyperglycemia (NUC = nucleotides).

DOI: <https://doi.org/10.7554/eLife.42214.063>

The following source data and figure supplements are available for figure 8:

Source data 1. Excel spreadsheet containing the individual numeric values of LTCC nP_o analyzed in **Figure 8B**.

DOI: <https://doi.org/10.7554/eLife.42214.066>

Source data 2. Excel spreadsheet containing the individual numeric values of pSer¹⁹²⁸/Ca_v1.2 relative density analyzed in **Figure 8C**.

DOI: <https://doi.org/10.7554/eLife.42214.067>

Figure supplement 1. Full-length blots corresponding to data in **Figure 8C** and unchanged LTCC nP_o in response to chronic elevations in extracellular glucose in S1928A arterial myocytes.

DOI: <https://doi.org/10.7554/eLife.42214.064>

Figure supplement 1—source data 1. Excel spreadsheet containing the individual numeric values of LTCC nP_o analyzed in **Figure 8—figure supplement 1B**.

DOI: <https://doi.org/10.7554/eLife.42214.065>

avert PKA-mediated Ser¹⁹²⁸ phosphorylation and stimulated LTCC activity during diabetic hyperglycemia.

Discussion

Increased arterial myocyte contractility and vasoconstriction in response to elevated extracellular glucose contribute to vascular complications in diabetes (Cooper et al., 2001; Fleischhacker et al., 1999; Jackson et al., 2016; Montero et al., 2013; Nieves-Cintrón et al., 2015; Nystoriak et al., 2017). This endothelium-independent component is attributed, at least in part, to glucose-induced decreases in K⁺ channel expression and activity (Jackson et al., 2016; Nieves-Cintrón et al., 2015; Nieves-Cintrón et al., 2017; Nieves-Cintrón et al., 2018; Nystoriak et al., 2014; Straub et al., 2009), transcriptional remodeling through NFATc3 signaling (Nieves-Cintrón et al., 2015; Nieves-Cintrón et al., 2018; Nilsson et al., 2006; Nystoriak et al., 2014), and alterations in PKC/Rho kinase signaling (Abd-Elrahman et al., 2015; Hien et al., 2016; Kizub et al., 2010). Our group has additionally established, in human and mouse arterial tissue, PKA-mediated potentiation of LTCC activity via increased phosphorylation of the pore-forming Ca_v1.2 subunit at Ser¹⁹²⁸ as a key event that contributes to vascular complications during diabetic hyperglycemia (Morotti et al., 2017; Navedo et al., 2010b; Nystoriak et al., 2017). The classic molecular machinery stimulating PKA activity implicates activation of upstream effector enzymes (e.g. AC) and G protein-coupled receptors (GPCR). In the present study, using native human arteries and arterial myocytes, we identified a G_s-coupled P2Y receptor with the molecular, pharmacological, and signaling properties of P2Y₁₁ as the GPCR underlying the glucose triggering cascade that results in PKA-dependent potentiation of LTCCs (Figure 8D). Indeed, P2Y₁₁ is known to associate with ACs to stimulate cAMP/PKA signaling (Communi et al., 1997; Pucéat et al., 1998). Similar results were observed in mouse arteries and arterial myocytes, indicating that a P2Y₁₁-like receptor could be mediating the glucose response in these cells. The implications of these observations are profound, as they may shed light on unique mechanisms of diabetic vascular complications.

Elevations in extracellular glucose have been shown to promote autocrine release of nucleotides in a number of cells, including arterial myocytes (Costa et al., 2009; Hazama et al., 1998; Nilsson et al., 2006; Parodi et al., 2002). This glucose-induced release of nucleotides has been associated with increased global [Ca²⁺]_i in arterial myocytes, but the mechanisms and functional implications were not clearly established (Nilsson et al., 2006). This prompted us to examine whether extracellular nucleotides could be mediating glucose effects on LTCC activity and vascular

reactivity. Our first major finding was that hydrolysis of extracellular nucleotides by the ectonucleotidase apyrase prevented the increases in Ser¹⁹²⁸ phosphorylation, LTCC activity and vasoconstriction in response to elevations in extracellular glucose (**Figure 1**). Outcomes from LTCC recordings under continuous flow or static bath conditions (**Figure 1—figure supplement 2**) further support the involvement of extracellular nucleotide signaling in mediating the glucose effects. Given the well-established function of extracellular nucleotides in activating P2Y receptors (see (**von Kügelgen and Harden, 2011**)), our studies also pointed to the potential contribution of at least one of the eight known P2Y receptors in this process. In line with this concept, our multidisciplinary approach using human tissue suggested involvement of a P2Y receptor fitting the profile for the P2Y₁₁ subtype. Intriguingly, similar results were observed using mouse tissue/cells, suggesting a role for a P2Y₁₁-like receptor. To date, this is the only G_s-coupled P2Y, which could activate AC, leading to increased cAMP synthesis and thereby PKA activation. Considering the essential actions of PKA on LTCC activity and vasoconstriction in response to elevated glucose (**Morotti et al., 2017; Navedo et al., 2010b; Nystoriak et al., 2017**), we submit that such changes may proceed through activation of this purinergic signaling pathway.

Few studies have examined the role of P2Y₁₁ in the cardiovascular system. Current knowledge suggests that this receptor is associated with positive inotropic effects of ATP on cardiomyocytes and its activity seems to be impaired during cardiomyopathy (**Balogh et al., 2005**). Moreover, a polymorphism (Ala-87-Thr) in P2Y₁₁ has been linked to increased risk of acute myocardial infarction and C-reactive protein blood levels (**Amisten et al., 2007**). These results indicate a role for P2Y₁₁ in cardiac (dys)function. However, the functional significance of P2Y₁₁ in the vasculature, and particularly in arterial myocytes, is virtually unknown. In the present study, Western blot analysis detected an immunoreactive band of the expected molecular weight for P2Y₁₁ (e.g. $\sim 40 \pm 10$ kDa) in human arterial lysates (**Figure 2C**). We confirmed robust distribution of the receptor at the expected plasma membrane location in isolated human arterial myocytes (**Figure 2D**). In line with the expected function for this GPCR, we corroborated localized subplasmalemmal cAMP synthesis upon receptor stimulation with a highly selective P2Y₁₁ agonist (NF546 (**Meis et al., 2010**); **Figure 5**). Notably, 20 mM D-glucose triggered cAMP synthesis of the same magnitude as the NF546 compound, and simultaneous application of NF546 and 20 mM D-glucose did not have any additional effect when compared with individual treatment exposure, suggesting that both stimuli proceed through the same signaling pathway. In support of this possibility, the specific P2Y₁₁ antagonist NF340 (**Meis et al., 2010**) blocked the NF546 and NF546 + 20 mM D-glucose effects on cAMP synthesis (**Figure 5**). The P2Y₁₁ antagonist also prevented increased Ser¹⁹²⁸ phosphorylation and LTCC activity in response to acute elevations in extracellular glucose (**Figure 6**), while the P2Y₁₁ agonist NF546 recapitulated all the glucose-induced, PKA-dependent effects (**Figure 7**). Moreover, the NF340 compound hampered glucose-induced changes in Ser¹⁹²⁸ phosphorylation levels and LTCC activity during chronic hyperglycemic conditions resembling those observed during diabetes (**Figure 8**). Altogether, these results revealed a role for human P2Y₁₁ or mouse P2Y₁₁-like receptor in arterial myocytes, particularly during glucose signaling, and suggest that this GPCR may be involved in the initiation and/or progression of arterial myocyte dysfunction leading to vascular complications during diabetic hyperglycemia. Our results may also have profound clinical implications as they add to a growing body of evidence implicating a role for altered P2Y₁₁ function in a number of pathological conditions (**Nishimura et al., 2017**), which could make them a potential therapeutic target.

Our findings indicating that elevated extracellular glucose triggers PKA-dependent potentiation of LTCC activity to induce vasoconstriction were unexpected, as PKA activity has been traditionally associated with vasodilation due, in part, to increased K⁺ channel activity. A reasonable prediction was that glucose could influence LTCCs via a cAMP/PKA signaling pathway that is distinct from that governing K⁺ channels as occurs upon β adrenergic stimulation (**Moore et al., 2014**). Such separation in cAMP would require precise subsarcolemmal compartmentalization of key proteins and signaling molecules (including GPCR, signaling enzyme, second messenger, effector protein and substrate). In the case of PKA-dependent effects on LTCC function in response to elevated glucose, this separation would include seclusion of a G_s-coupled receptor, AC, PKA and Ca_v1.2. Indeed, **Tajada et al** recently showed that optimal ion channel regulation by effector proteins is constrained by their nanometer distance between each other (**Tajada et al., 2017**). In support of this possibility, our recent work revealed nanometer proximity of a subpopulation of Ca_v1.2 ($\sim 10\%$ of Ca_v1.2 clusters) to pools of PKA (**Nystoriak et al.,**

2017). Here, we found a close association ($\leq 40\text{--}90$ nm) between pools of P2Y₁₁ and Ca_v1.2 as well as P2Y₁₁ and PKA (**Figure 3**). Moreover, given the cAMP biosensor data demonstrating that both glucose and the P2Y₁₁ agonist NF546 induce localized subsarcolemmal cAMP synthesis (**Figure 5**), it is also likely that P2Y₁₁ may be in close proximity to a specific AC isoform in arterial myocytes - the identity of which remains to be established. Nevertheless, this implicates the formation of a distinctive nanomolecular domain likely containing P2Y₁₁, AC, PKA and Ca_v1.2 in arterial myocytes (**Figure 8D**), although its confirmation is beyond the scope of this study. This nanodomain may ensure the necessary signaling compartmentalization required for PKA-mediated effects on LTCC activity and vascular reactivity in response to elevated glucose.

The spatial organization of the P2Y₁₁/AC/PKA/Ca_v1.2 nanodomain could be facilitated by scaffold proteins, such as A kinase anchoring proteins (AKAPs). These AKAPs fine tune signal transduction by localizing GPCRs, signaling enzymes and effector proteins in close proximity to their substrates (**Johnstone et al., 2018; Langeberg and Scott, 2015**). The A kinase anchoring protein 150 (AKAP150; murine ortholog of human AKAP79) is of particular interest as it has been shown to interact with AC, PKA and Ca_v1.2 (**Bauman et al., 2006; Efendiev et al., 2010; Gao et al., 1997; Murphy et al., 2014; Navedo et al., 2008; Nystoriak et al., 2017; Zhang et al., 2013**). Intriguingly, although AKAP79/150 can associate with multiple GPCRs (**Fraser et al., 2000; Zhang et al., 2011**), no report to date has linked it to any purinergic receptor. Localization of P2Y₁₁ within the same AKAP79/150-driven complex may be critical as this scaffold protein is necessary for increased L-type Ca²⁺ channel activity in response to elevated glucose (**Nystoriak et al., 2017**). Two possibilities that do not exclude a fundamental role for AKAP79/150 are 1) direct interaction of P2Y₁₁ with the scaffold protein and/or 2) association of the receptor with a pool of Ca_v1.2 within the AKAP79/150 complex. Future studies should examine these exciting alternatives as they may provide further insight into mechanisms regulating LTCCs and vascular reactivity during diabetic hyperglycemia.

A lingering question is how nucleotides, such as ATP, are released in response to glucose to modulate arterial myocyte excitability. Although our data do not identify the specific nucleotide, ATP release is particularly interesting as this nucleotide is an effective vasoactive agent and the endogenous P2Y₁₁ agonist (**Communi et al., 1997; Kennedy, 2017; Schuchardt et al., 2012; von Kügelgen and Harden, 2011**). Indeed, ATP can activate P2Y₁₁ with an EC₅₀ that ranges from 1.8 to 17 μM , depending on the readout and the cell type used (**Communi et al., 1999; Haas et al., 2014; Meis et al., 2010; Qi et al., 2001**). Moreover, P2Y₁₁ can be activated by ATP/ATP-derived nucleotides with the following potency order: ATP γ S > dATP > ATP >>> ADP, with other nucleotides such as UTP and UDP having minimal or no influence on receptor activation (**Kennedy, 2017; Schuchardt et al., 2012; von Kügelgen and Harden, 2011**). Our recent study suggested that glucose effects on LTCC activity and vascular reactivity require glucose transport into the cell and subsequent metabolism that can generate ATP (**Nystoriak et al., 2017**). ATP can then be transported out of the cell through ATP-binding cassettes, vesicular exocytosis, plasma membrane F₁F₀-ATPase, connexin hemichannels and pannexin channels to induce activation of P2Y₁₁ (**Lohman et al., 2012**). We thus speculate that one of these ATP transporters could form part of the AKAP/P2Y₁₁/AC/PKA/Ca_v1.2 nanocomplex to provide another layer of compartmentalization that facilitates PKA-dependent regulation of LTCC function and vascular reactivity in response to elevations in extracellular glucose.

In summary, our data in human and murine tissue provide evidence of a G_s-coupled purinergic receptor that fits the profile of P2Y₁₁ or a P2Y₁₁-like receptor, respectively, as a key upstream component in the signaling cascade regulating LTCC activity and vascular reactivity during diabetic hyperglycemia. Data start to define a unique nanomolecular complex likely formed by AKAP/P2Y₁₁/AC/PKA/Ca_v1.2. This nanocomplex can organize glucose signaling and help explain the intriguing consequences of glucose-induced PKA activation on LTCC function and vascular reactivity, which may have significant pathological implications, and therapeutic potential to treat vascular complications during diabetic hyperglycemia.

Materials and methods

Key resources table

Continued on next page

Continued

Reagent type (species) or resource	Designation	Source or reference	Identifiers	Additional information
Strain (<i>Mus musculus</i>), C57BL/6J	wild-type	Jackson Laboratories	stock # 000664	
Strain (<i>Mus musculus</i>)	S1928A	(Lemke et al., 2008)		
Cell line (human embryonal kidney)	tsA-201	Sigma-Aldrich	96121229	SV40 transformed
Oligodeoxynucleotide, sense	P2Y ₁₁ SNS ODN	Integrated DNA Technologies	human P2Y ₁₁ sequence (NC_000019.10): 5'-CAACGTCTCGG GTAAGGAGAA-3' and 5'-ATGAGGAAGG AAACGTGGGT-3'	last three bases on the 3' end were phosphoro-thioated
Oligodeoxynucleotide, antisense	P2Y ₁₁ ANS ODN	Integrated DNA Technologies	human P2Y ₁₁ sequence (NC_000019.10): 5'-CAAGGCCACCCTAACCCTG-3' and 5'-CTCTCCCTCCCTGCGTTA-3'	last three bases on the 3' end were phosphoro-thioated
DNA construct	human P2Y ₁₁	UMR cDNA Resource Center	www.cDNA.org ; clone ID P2Y1100000	tagged with GFP at C-terminus
Antibody	anti-FP1 (Ca _v 1.2; custom rabbit)	(Davare et al., 2000)		dilutions: 1:100 for immunoblot and PLA; 10 µg/mL for GSD
Antibody	anti-CH3P (pSer ¹⁹²⁸ , custom rabbit)	(Davare et al., 2000)		1:50-1:100 dilutions
Antibody	anti-β-actin (mouse monoclonal)	Abcam	ab8226 RRID: AB_30637	1:1000 dilution
Antibody	anti-α-tubulin (mouse monoclonal)	Active Motif	39527; clone 5-B-1-2	1:500 dilution
Antibody	anti-P2Y ₁₁ (rabbit polyclonal)	Abcam	ab180739	1:100-1:200 dilutions
Antibody	anti-P2Y ₁₁ (goat polyclonal)	Santa Cruz Biotechnology	sc-69588; clone C-18 RRID: AB_21559	dilutions: 1:100 for stainings (PLA, classical) and 10 µg/mL for GSD
Antibody	anti-PKA _{cat} α, β, γ (mouse monoclonal)	Santa Cruz Biotechnology	sc-28315; clone A-2	1:200 dilution
Antibody	PKA _{cat} α, β, γ blocking peptide	Santa Cruz Biotechnology	sc-28315 P; clone A-2	1:20 dilution for 1 µg of primary antibody
Antibody	anti-PKA _{cat} α, β, γ (rabbit polyclonal)	Santa Cruz Biotechnology	sc-28892; clone H-95	dilutions: 1:200 for PLA and 10 µg/mL for GSD
Antibody	Alexa Fluor 488 conjugate of wheat germ agglutinin	Life Technologies	W7024	
Antibody	Alexa Fluor 568-conjugated donkey anti-goat	Molecular Probes	A11057 RRID: AB_142581	5 mg/mL dilution

Continued on next page

Continued

Reagent type (species) or resource	Designation	Source or reference	Identifiers	Additional information
Antibody	Alexa Fluor 568-conjugated donkey anti-mouse	Molecular Probes	A10037	5 mg/mL dilution
Antibody	Alexa Fluor 568-conjugated donkey anti-rabbit	Molecular Probes	A11011 RRID: AB_143157	2 µg/mL dilution
Antibody	Alexa Fluor 647-conjugated donkey anti-goat	Molecular Probes	A21447 RRID: AB_141844	2 µg/mL dilution
Antibody	goat anti-rabbit IgG (H + L)-horseradish peroxidase conjugate	Bio-Rad	170-6515 RRID: AB_11125142	1:10000 dilution
Antibody	goat anti-mouse IgG (H + L)-horseradish peroxidase conjugate	Bio-Rad	170-6516	1:10000 dilution
Chemical compound, drug	sodium pentobarbital (Fatal-Plus)	Vortech Pharma-ceuticals	NDC 0298-9373-68	
Chemical compound, drug	mannitol	Fisher Scientific	BP686	
Chemical compound, drug	NF340	Santa Cruz Biotechnology	sc-361274	
Chemical compound, drug	NF546	Tocris	3892	
Chemical compound, drug	apyrase	New England Biolabs	M0398L	
Chemical compound, drug	nifedipine	Sigma-Aldrich	N7634	
Chemical compound, drug	Bay K-8644	Sigma-Aldrich	71145-03-4	
Chemical compound, drug	forskolin	Sigma-Aldrich	F6886	
Chemical compound, drug	amphotericin B	Sigma-Aldrich	A4888	
Chemical compound, drug	MRS2578	Santa Cruz Biotechnology	sc-204103A	
Chemical compound, drug	MRS2179	Tocris	1454889-37-2	
Chemical compound, drug	protein kinase A inhibitor (PKI)	Sigma-Aldrich	P9115	fragment 14–22, myristoylated trifluoroacetate salt

Continued on next page

Continued

Reagent type (species) or resource	Designation	Source or reference	Identifiers	Additional information
Chemical compound, drug	Rp-Adenosine 3',5'-cyclic monophosphorothioate triethylammonium salt (rpcAMP)	Sigma-Aldrich	A165	
Chemical compound, drug	Adenosine 5'-[γ-thio] triphosphate tetralithium salt (ATPγS)	Sigma-Aldrich	A1388	
Software, algorithm	GraphPad Prism		GraphPad Prism, RRID: SCR_002798	
Software, algorithm	ImageJ		Fiji, RRID: SCR_002285	
Software, algorithm	pCLAMP10	Molecular Devices		electrophysiology
Software, algorithm	LASAF	Leica		GSD
Software, algorithm	IonOptix	IonOptix		arterial diameter recordings
Software, algorithm	Metaflor	Molecular Devices		FRET

Animals

Male wild type C57BL/6J (wt) or knockin mice in which Ser¹⁹²⁸ of Ca_v1.2 was mutated to Ala (S1928A) ([Lemke et al., 2008](#)) of 5 to 8 weeks of age were euthanized with a lethal dose of sodium pentobarbital (250 mg/kg; intraperitoneally), as approved by the University of California, Davis Animal Care and Use Committee (protocol #: 20321).

Human tissue

Excised adipose arteries from human patients undergoing surgical sleeve gastrectomy were used for this study ([Supplementary file 3](#)). Samples were obtained after Institutional Review Board (IRB) approval from the University of Nevada Reno School of Medicine (IRB ID: 2013–019) and in accordance with the guidelines of the *Declaration of Helsinki*. The need for informed consent was waived by IRBs at the University of Nevada Reno School of Medicine (IRB ID: 2013–019) and the University of California Davis (IRB ID: 597267–1) because the tissue is considered 'waste', has no codification that could be used to identify patients and was determined not to be human subject research in accordance with United States of America federal regulations, as defined by 45 CFR 46.102(f). This precludes the acquisition of detailed clinical profiles other than sex, age and whether the patient is nondiabetic or diabetic. Only samples from nondiabetic patients were used. No exclusions were made due to medication history, sex or presence of comorbidities. Collected tissue was placed in cold phosphate-buffered saline (PBS) solution containing (in mM): 138 NaCl, 3 KCl, 10 Na₂HPO₄, 2 NaH₂PO₄, 5 D-glucose, 0.1 CaCl₂, and 0.1 MgSO₄, pH 7.4 with NaOH until used.

Arterial myocyte isolation

Mouse cerebral arteries were dissected in ice-cold dissection buffer containing (in mM): 140 NaCl, 5 KCl, 2 MgCl₂, 10 D-glucose, 10 HEPES, pH 7.4, with NaOH. Arteries were digested in dissection buffer containing papain (1 mg/mL) and dithiothreitol (1 mg/mL) at 37° C for 7 min, followed by incubation in dissection buffer containing collagenase type F (0.7 mg/mL) and collagenase type H (0.3 mg/mL) at 37° C for 7 min. Arteries were washed in ice-cold dissection buffer and gently triturated with glass pipettes to disperse the cells, which were kept in ice-cold dissection buffer until use.

Single human arterial myocytes (**Supplementary file 3**) were isolated as previously described (**Nieves-Cintrón et al., 2017; Nystoriak et al., 2017**). Briefly, small diameter adipose arteries from human samples were enzymatically digested in dissection solution supplemented with papain (26 U/mL) and dithiothreitol (1 mg/mL) at 37° C for 15 min, followed by incubation in dissection solution containing collagenase type H (1.95 U/mL), elastase (0.5 mg/mL), and trypsin inhibitor (1 mg/mL) at 37° C for 10 min. Cells were then washed three times in ice-cold dissection buffer, triturated with glass pipettes to disperse the individual cells, and maintained in ice-cold dissection buffer until use.

For unpassaged, cultured human and mouse arterial myocytes, human adipose arteries and mouse aortas were dissected out and placed in ice-cold Dulbecco's Modified Eagle Medium (DMEM; Gibco – Life Technologies, Grand Island, NY) containing 1X glutamate, 1X pyruvate, 1X penicillin/streptavidin and fungizone (0.25 g/mL). Artery segments were subsequently transferred and incubated in a DMEM solution containing 2.2 mg/mL of collagenase Type 2 (Worthington) at 37° C for 15 min to remove the adventitia. To disperse and culture unpassaged arterial myocytes, the tissue was cut into 2–5 mm segments and incubated at 37° C with constant shaking in a buffer containing (in mM): 134 NaCl, 6 KCl, CaCl₂, 10 HEPES, and 7 D-glucose supplemented with 2.2 mg/mL collagenase Type 2 (Worthington). The digestion was stopped by adding an equal volume of DMEM containing 5% fetal bovine serum. Digested tissue was then centrifuged for 5 min at 14,000 rpm. The supernatant was removed and the pellet containing the digested tissue was resuspended in DMEM containing 1X glutamate, 1X pyruvate, 5% serum and 5 mM D-glucose, resulting in dispersion of individual arterial myocytes. Cells were then seeded on glass coverslips coated with laminin and kept in an incubator at 37° C with 5% CO₂ for 2–3 days before adenoviral transduction or lysis for immunoblotting (see section below).

Arterial diameter measurements

Freshly isolated posterior mouse cerebral arteries were cannulated on glass micropipettes mounted in a 5 mL myograph chamber (University of Vermont Instrumentation and Model Facility), as described previously (**Nieves-Cintrón et al., 2017; Nystoriak et al., 2014; Nystoriak et al., 2017**). Arteries were allowed to equilibrate at an intravascular pressure of 20 mmHg, while being continuously superfused (37° C, 30 min, 3–5 mL/min) with physiological saline solution composed of (in mM): 119 NaCl, 4.7 KCl, 2 CaCl₂, 24 NaHCO₃, 1.2 KH₂PO₄, 1.2 MgSO₄, 0.023 EDTA, and 10 D-glucose aerated with 5% CO₂/95% O₂. Bath pH was closely monitored and maintained at 7.35 to 7.4. After equilibration, intravascular pressure was increased to 60 mmHg and arteries allowed to develop stable myogenic tone. Arteries not exhibiting stable tone after ~1 hr were discarded. To assess the response of arterial diameter to hyperglycemia, D-glucose was increased from 10 mM to 20 mM in the perfusion solution. Arterial tone data are presented as a percent decrease in diameter relative to the maximum passive diameter at 60 mmHg obtained using Ca²⁺-free saline solution containing nifedipine (1 μM) at the end of the experiment.

Electrophysiology

All experiments were performed at room temperature (22–25° C). Both whole-cell and single-channel data were acquired using an Axopatch 200B amplifier and Digidata 1440 digitizer (Molecular Devices). Recording electrodes were pulled from borosilicate capillary glass using a micropipette puller (model P-97, Sutter Instruments) and subsequently polished to achieve resistances that ranged from 3.5 to 6.5 MΩ. L-type Ca²⁺ channel currents were assessed in freshly dissociated arterial myocytes using the perforated whole-cell mode of the patch-clamp technique with Ba²⁺ as a charge carrier (I_{Ba}) after myocytes were allowed to attach (10 min) to a glass coverslip in a recording chamber. Borosilicate glass pipettes were filled with a solution containing (in mM): 120 CsCl, 20 tetraethylammonium chloride (TEA-Cl), 1 EGTA, and 20 HEPES with amphotericin B (250 μg/mL; pH adjusted to 7.2 with CsOH). The bath solution consisted of (in mM): 115 NaCl, 10 TEA-Cl, 0.5 MgCl₂, 10 D-glucose, 5 CsCl, 20 BaCl₂, and 20 HEPES, pH adjusted to 7.4 with CsOH. I_{Ba} were elicited by 200 ms depolarizing pulses from a holding potential of –70 mV to +10 mV. I_{Ba} were first recorded in the presence of 10 mM D-glucose under static flow conditions. This solution was then exchanged for a solution containing either 20 mM D-glucose, 20 mM mannitol or NF546 at a rate of 2.1 mL/min. Flow was stopped after 3 min, and I_{Ba} were recorded again under static flow conditions at least 5 min after the indicated treatment was initiated. In some experiments, arterial myocytes were

pretreated for 10–15 min with indicated inhibitors prior to I_{Ba} recordings. For experiments comparing I_{Ba} before and after elevated glucose under continuous flow and static bath conditions, cells were patched in a bath solution containing 10 mM D-glucose at a perfusion rate of 2.1 mL/min. After establishment of a stable gigaseal for at least 5 min, I_{Ba} were recorded in the presence of 10 mM D-glucose under continuous flow. Those cells that showed robust I_{Ba} in 10 mM D-glucose were then perfused with a bath solution containing 20 mM D-glucose under continuous flow for at least 5 min before recording of I_{Ba} again. Subsequently, I_{Ba} were recorded one more time on the same cell, 5 min after stopping the bath perfusion (e.g. static bath conditions). Currents were sampled at 10 kHz and low pass-filtered at 5 kHz. The $Ca_v1.2$ blocker nifedipine (1 μ M) was applied at the end of each experiment to determine the nifedipine-sensitive component. The I-V relationship of nifedipine-sensitive I_{Ba} was determined by 200 ms depolarizing steps from -70 mV to voltages ranging from -60 to $+60$ mV in increments of $+10$ mV. The I-V relationship for averaged data sets was fit with a peak Gaussian function: $I(V) = I_{max} \times \exp(-0.5((V - V_{max})/b)^2)$, where I_{max} is peak I , V_{max} is V at I_{max} , and b is the slope of the distribution, as described previously (Nystoriak et al., 2017). A voltage error of 10 mV attributable to the liquid junction potential of the recording solutions was corrected offline.

The cell-attached configuration of the patch-clamp technique was used to examine single-channel Ca^{2+} currents in arterial myocytes using Ca^{2+} as the charge carrier, as previously described (Cheng et al., 2011; Dixon et al., 2015; Dixon et al., 2012; Navedo et al., 2010a; Nystoriak et al., 2017). Resting membrane potential was fixed to ~ 0 mV using a high K^+ bath solution (Hess et al., 1986; Zampini et al., 2006) composed of (in mM): 145 KCl, 10 NaCl, and 10 HEPES, pH adjusted to 7.4 with NaOH. Pipette solution was composed of (in mM): 120 TEA-Cl, 110 $CaCl_2$, and 10 HEPES with BayK-8644 (500 nM), which promotes longer open times of the channel thereby increasing the probability of sweeps with channel activity. Single L-type Ca^{2+} currents were elicited by a 2 s depolarizing step from a holding of -70 mV to -30 mV. Single-channel currents were sampled at 10 kHz and low pass filtered at 2 kHz, followed by a Gaussian filter (500 Hz) during analysis. Capacitive currents were compensated by subtraction of blank sweeps. When nifedipine was included in the patch pipette, $Ca_v1.2$ activity was negligible. Single-channel openings and nP_o were analyzed using the single-channel event half-amplitude detection algorithm from pCLAMP 10.

Immunoprecipitation and immunoblotting

Human adipose arteries, mouse cerebral and mesenteric arteries, and mouse arterial myocytes were homogenized in a RIPA lysis buffer solution composed of 50 mM Tris-HCl (pH 7.4), 150 mM NaCl, 5 mM EGTA, 10 mM EDTA, 1% nonyl phenoxypolyethoxyethanol-40 (NP-40), 10% glycerol, 0.05% sodium dodecyl sulfate (SDS), 0.4% deoxycholic acid (DOC) with protease inhibitors (1 μ g/ml pepstatin A, 10 μ g/ml leupeptin, 20 μ g/ml aprotinin, and 200 nM phenylmethylsulfonyl fluoride) and phosphatase inhibitors (2 μ M microcystin LR, 1 mM *p*-nitrophenyl phosphate, 50 mM Na-pyrophosphate, and 50 mM NaF), then sonicated for 5 min at 4° C and cleared by centrifugation (15,000 X *g*) for 20 min at 4° C. For Ser¹⁹²⁸ phosphorylation experiments, the soluble fraction was incubated on a head-over-head tilter with protein A-Sepharose beads and a purified custom antibody against $Ca_v1.2$ (5 μ g of FP1; see Davare et al., 2000) or nonspecific rabbit immunoglobulin G (IgG) control for 4 hr at 4° C. Beads were washed three times with washing buffer containing (in mM): 150 NaCl, 10 EDTA, 10 EGTA, 10 Tris-HCl (pH 7.4), 0.1% Triton X-100, pH 7.4. Samples were extracted in Laemmli Sample Buffer (Bio-Rad) for 5 min at 95° C for immunoprecipitation (Ser¹⁹²⁸ phosphorylation) experiments and 15 min at 80° C for other immunoblot experiments. Proteins were separated by SDS-polyacrylamide gel electrophoresis at 75–100 V for 1.5 hr in a stacking gel polymerized from 3% acrylamide and a resolving phase polymerized from 7.5% (Ser¹⁹²⁸ phosphorylation) or 10% acrylamide. Proteins were then transferred to a polyvinylidene difluoride membrane at 50 V for 600 min at 4° C. All membranes, except for P2Y₁₁ blots (10% Odyssey blocking buffer; LI-COR Biosciences), were blocked in 5% nonfat dried milk in tris-buffered saline with 0.05% Tween 20 (TBS-T) for 1 hr at room temperature before primary antibody incubation for 2–3 hr at room temperature. Antibodies and dilutions were as follows: rabbit anti-CH3P (pSer¹⁹²⁸; 1:50-1:100), (Davare et al., 2000) rabbit anti-FP1 ($Ca_v1.2$; 1:100) (Davare et al., 2000), rabbit anti-P2Y₁₁ (Abcam, 1:100-1:200); mouse anti- β -actin (Abcam, 1:1000), and anti α -tubulin (Active Motif, 1:500). Except for the P2Y₁₁ antibody, which was diluted in 1% bovine serum albumin, all antibodies were diluted in 5% nonfat dried milk in TBS-T. After washing, membranes were then incubated 1 hr at room temperature with horseradish peroxidase-labeled goat anti-rabbit (Bio-Rad; 1:10,000) or goat-anti-mouse antibodies (Bio-Rad; 1:10,000)

diluted in 5% nonfat dried milk in TBS-T or 5% Odyssey in TBS-T (P2Y₁₁ only) and developed on autoradiography film using chemiluminescence (Classico [Millipore] and Femto [Thermo Fisher Scientific]). For Ser¹⁹²⁸ phosphorylation and P2Y₁₁ knock down experiments, total Ca_v1.2 and β-actin, respectively, were used for normalization (density expressed as percentage of total Ca_v1.2/β-actin and these ratios were normalized to the ratio of the control band to get the relative density of pSer¹⁹²⁸/Ca_v1.2 or P2Y₁₁/β-actin for all treatments). For Ser¹⁹²⁸ phosphorylation quantification in **Figure 1—figure supplement 1E**, triplicates were run in parallel and all values were normalized to the ratio of the loading control band (e.g. α-tubulin obtained from the same samples) to get the pSer¹⁹²⁸/α-tubulin ratio for all treatments. The pSer¹⁹²⁸/α-tubulin ratios were then normalized to the first control band ratio to obtain the relative density of pSer¹⁹²⁸/α-tubulin. Densitometry analysis for bands was performed with ImageJ software (National Institutes of Health) as follow. Developed films were scanned to tiff files, uploaded to ImageJ and color inverted. Immunoreactive bands were outlined and light intensity per area was measured. Doublet bands were outlined and measured as one signal. Intensity of equal area above and below each immunoreactive band was measured to average and then subtract the background signal. Importantly, films were exposed for increasing time periods to ensure signals were in the linear range as described in **Davare and Hell (2003)** and **Hall et al. (2006)**. β-actin and α-tubulin were used as a loading control in some experiments.

Organ culture

Freshly isolated arteries for acute Ser¹⁹²⁸ phosphorylation experiments were incubated for 5 min at room temperature in a physiological saline solution composed of (in mM): 119 NaCl, 4.7 KCl, 2 CaCl₂, 24 NaHCO₃, 1.2 KH₂PO₄, 1.2 MgSO₄, 0.023 EDTA, and 10 (5 for humans) D-glucose aerated with 5% CO₂/95% O₂ to reach a pH of 7.35–7.4. Arteries were then incubated for 10 min at room temperature in a similar physiological solution containing the specified treatment. Following incubation, arteries were immediately placed in RIPA lysis buffer with protease and phosphatase inhibitors (as described in immunoblotting section). For chronic exposure experiments, arteries were placed in DMEM/F-12 (Gibco-Life Technologies, Grand Island, NY) supplemented with L-glutamine (2 mM) containing 10 mM, 20 mM D-glucose or 20 mM mannitol in the absence or presence of 10 μM NF340 and incubated for 48 hr at 37° C. After incubation, arteries were quickly washed in PBS and then placed in RIPA lysis buffer with protease and phosphatase inhibitors for immunoblotting.

Immunofluorescence

Immunofluorescent labeling of freshly dissociated arterial myocytes was performed as described previously (**Navedo et al., 2008**), using a goat-anti P2Y₁₁ (Santa Cruz Biotechnology, clone C-18; 1:100) or a mouse-anti PKA_{cat} α, β, γ (Santa Cruz Biotechnology, clone A-2, 1:200) antibodies in PBS supplemented with 0.1% BSA. Alexa Fluor 488 conjugated wheat germ agglutinin (WGA; Life Technologies) was used to stain for the plasma membrane. The secondary antibodies were Alexa Fluor 568-conjugated donkey anti-goat and donkey anti-mouse (5 mg/mL; Molecular Probes). In control experiments, the PKA_{cat} antibody was preabsorbed with a PKA_{cat} blocking peptide (Santa Cruz Biotechnology, A-2; 1:20 for 1 μg of primary antibody). Cells were imaged (512 × 512 pixel images) using an Olympus FV1000 confocal microscope paired with an Olympus 60x oil immersion lens (NA = 1.4) and a zoom of 3.0 (pixel size = 0.1 μm). P2Y₁₁-associated fluorescence was not detected in negative control experiments in which the primary antibody was substituted for PBS or boiled to test for antibody specificity. Cells for each group were imaged with the same laser power, gain settings, and pinhole.

Proximity ligation assay

A Duolink In Situ PLA kit (Sigma) (**Fredriksson et al., 2002**) was used to detect complexes consisting of P2Y₁₁ and Ca_v1.2 and P2Y₁₁ and PKA_{cat} in freshly isolated arterial myocytes as previously described (**Nieves-Cintrón et al., 2017**; **Nystoriak et al., 2017**). Briefly, cells were plated on glass coverslips and allowed to adhere (1 hr, room temperature) prior to fixing with 4% paraformaldehyde (20 min), quenching in 100 mM glycine (15 min), and washing in PBS (2 × 3 min). Cells were permeabilized with 0.1% Triton X-100 (20 min) and then blocked (1 hr, 37° C) in 50% Odyssey blocking solution (LI-COR Bioscience). Cells were incubated overnight at 4° C with a specific combination of two primary antibodies in 0.1% Odyssey +0.05% Triton X-100 PBS solution: goat anti-P2Y₁₁ (Santa Cruz

Biotechnology, clone C-18; 1:100), custom rabbit anti-FP1 (Ca_v1.2, 1:100) (Davare et al., 2000) and rabbit anti-PKA_{cat} α, β, γ (Santa Cruz Biotechnology, clone H-95, 1:200). Cells were incubated with only one primary antibody as negative controls. After primary antibody incubation, cells were washed with Duolink buffer A (2 × 5 min). Oligonucleotide-conjugated secondary antibodies (PLA probes: anti-goat MINUS and anti-rabbit PLUS) were used to detect P2Y₁₁ and Ca_v1.2 and P2Y₁₁ and PKA_{cat} (1 hr, 37° C). Following incubation with probes, cells were washed with Duolink buffer A (2 × 5 min) and a ligation solution composed of two distinct oligonucleotides, complementary to the probes, and ligase was added (30 min, 37° C) to allow hybridization with the probes and formation of a closed DNA circle at sites of dual labeling, which serves as a template for a rolling circle amplification reaction (100 min, 37° C). After the amplification step, cells were washed with Duolink buffer B (2 × 10 min) and 1% buffer B (1 × 1 min). Coverslips were allowed to dry and subsequently mounted on a microscope slide with Duolink mounting medium. The fluorescence signal was detected using an Olympus FV1000 confocal microscope coupled with a 60x oil immersion lens (NA, 1.4). Images were collected at different optical planes (z-axis step = 0.5 μm). The stack of images for each sample was combined into a single-intensity projection image that was subsequently used for analysis of number of puncta/μm² per cell.

Immunolabeling and Ground State Depletion (GSD) microscopy

Isolated arterial myocytes were allowed to adhere to a coverslip (1 hr) before fixing with 3% paraformaldehyde +0.1% glutaraldehyde solution in PBS (10 min) followed by washes with PBS (3 × 15 min). Cells were then incubated for 5 min with 0.1% sodium borohydride in H₂O, followed by 3 × 5 min washes with PBS and incubated in permeabilization/blocking solution consistent of 0.05% Triton X-100 and 20% SEA BLOCK (Thermo Scientific) for 1 hr at room temperature. Cells were exposed overnight to primary antibodies [goat anti-P2Y₁₁ (Santa Cruz Biotechnology, clone C-18), custom rabbit anti-Ca_v1.2 (FP1 (Davare et al., 2000)) or rabbit anti-PKA_{cat} α, β, γ (Santa Cruz Biotechnology, clone H-95)] diluted in blocking buffer to a concentration of 10 μg/mL. Cells were briefly washed 3x with PBS, followed by additional longer washes (3x for 15 min). For secondary antibodies, donkey Alexa Fluor 647-conjugated antibody recognizing goat IgG (2 μg/mL; Molecular Probes) and donkey Alexa Fluor 568-conjugated antibody recognizing rabbit IgG (2 μg/mL; Molecular Probes) diluted in blocking buffer were added for 1 hr at room temperature. Secondary Ab was washed 3x with PBS, followed by longer washes (3x for 15 min). Specificity of secondary antibodies was tested in control experiments in which primary antibodies were omitted from the preparation (no 1° antibody controls). For imaging, coverslips were mounted on microscope slides with a round cavity containing MEA-GLOX imaging buffer (NeoLab Migge Laborbedarf-Vertriebs GmbH, Germany) and sealed with Twinsil (Picodent, Germany). The imaging buffer was composed of 10 mM MEA (cysteamine), 0.56 mg/mL glucose oxidase, 34 μg/mL catalase, and buffer containing 10% w/v glucose, 10 mM NaCl, and 50 mM Tris-HCl, pH 8.

Super-resolution images of arterial myocytes were obtained using a super resolution ground state depletion system (SR-GSD, Leica) dependent on stochastic single-molecule localization, equipped with high-power lasers (532 nm, 2.1 kW/ cm²; 642 nm, 2.1 kW/ cm²) and an additional 30 mW, 405 nm laser. A 160x HCX Plan-Apochromat (NA 1.47) oil immersion lens and an electron-multiplying charge-coupled device (EMCCD) camera (iXon3 897; Andor Technology) were used to acquire images (Dixon et al., 2015). The camera was running in frame-transfer mode at a frame rate of 100 Hz (10 ms exposure time). Fluorescence was detected through Leica high-power TIRF filter cubes (532 HP-T, 642 HP-T) with emission band-pass filters of 550–650 nm and 660–760 nm. Reconstruction of P2Y₁₁, Ca_v1.2, and PKA distribution from 30,000 images used the coordinates of centroids obtained by fitting single-molecule fluorescence signals with a 2D Gaussian function using a LASAF software (Leica). The localization accuracy of the system is limited by the statistical noise of photon counting; the precision of localization is proportional to DLR/√N, where DLR is the diffraction-limited resolution of a fluorophore and N is the average number of detected photons per switching event, assuming the point-spread functions are Gaussian (Dempsey et al., 2011; Fölling et al., 2008). The full width at half maximum for single-molecule signals was ~20 nm as recently calculated by our group (Tajada et al., 2017). Localizations produced from less than 800 photons were filtered out of the reconstruction. All pixels with intensity above a user-defined threshold were binarized, evaluated and segmented into individual objects and included as clusters in our analysis. Cluster size

and density were determined using the Analyze Particle option in the ImageJ software (National Institute of Health). The JACoP plug-in in the ImageJ software was used to unbiasedly and automatically determine the shortest intermolecular distances for P2Y₁₁ and Ca_v1.2 as well as P2Y₁₁ and PKA_{cat} following the protocol described by *Bolte and Cordelières (2006)*. Intermolecular distance histograms were generated from the JACoP plug-in output data and fitted with a sum of two Gaussian functions of the following equation: $Y = Y_0 + (A_1 / (w_1 \times \sqrt{(\pi/2)})) \times \exp(-2 \times ((X - X_{C1})/w_1)^2) + (A_2 / (w_2 \times \sqrt{(\pi/2)})) \times \exp(-2 \times ((X - X_{C2})/w_2)^2)$, where Y_0 is the Y offset, A_1 and A_2 are the areas of the distribution of distances, X_{C1} and X_{C2} are the x values of distance at the center of the distribution, and w_1 and w_2 are the widths of each distribution in nanometers. To calculate the percentage of complete P2Y₁₁ overlap, we first quantified the number of clusters/objects in the thresholded, binarized localization maps for P2Y₁₁ and Ca_v1.2 as well as P2Y₁₁ and PKA_{cat} using the Analyze Particle tool in ImageJ. The binarized localization maps of P2Y₁₁ were then multiplied by those corresponding to the paired Ca_v1.2 or PKA_{cat} localization maps. The number of objects obtained from this operation were then divided by the number of clusters/objects present in the original binarized localization maps for P2Y₁₁. This method only detects objects that are 100% overlapping with each other in two independent images (e.g localization maps for P2Y₁₁ and Ca_v1.2). Random simulation of image pairs for P2Y₁₁ and Ca_v1.2 or P2Y₁₁ and PKA_{cat} were generated based on the original super-resolution localization maps for each pair of proteins using the Coste's randomization algorithm included in the JACoP plug-in in ImageJ (*Bolte and Cordelières, 2006*) from six different cells per condition. Parameters for the Coste's randomization algorithm were selected to generate simulated images with relative similar cluster size and density to those observed in the original super-resolution localization maps for each protein. Each randomized image was generated after undergoing 1000 randomization rounds. Randomized images were binarized prior to analysis and the percentage of complete P2Y₁₁ overlap from the randomized image pairs was calculated as described above.

Cell culture, transfection of tsA-201 cells, and reverse permeabilization

tsA-201 were obtained from Sigma-Aldrich (cat#: ECACC 96121229). These cells are included in the European Collection of Authenticated Cell Cultures. tsA-201 cells were cultured in DMEM supplemented with 1X pyruvate, 1X glutamax, 8% fetal bovine serum (FBS) and 5 mM glucose (without phenol red) at 37° C in a 5% CO₂ incubator. Cells were transfected at 60–70% confluence with human P2Y₁₁ tagged with GFP at C-terminus (UMR cDNA Resource Center - www.cDNA.org; clone ID P2Y1100000) with JetPRIME transfection reagent (Polyplus transfection SA, NY) for approximately 36 hr. P2Y₁₁ sense and antisense oligodeoxynucleotides (ODNs; 2 μM; Integrated DNA Technologies) were transfected in tsA-201 cells 24 hr after initial transfection with P2Y₁₁-GFP. The cells were gently washed with 1X PBS and then removed with a cell scrapper using a RIPA lysis buffer solution composed of 50 mM Tris base, 150 mM NaCl, 5 mM EGTA, 10 mM EDTA, 1% nonyl phenoxypolyethoxyethanol-40 (NP-40), 10% glycerol, 0.05% sodium dodecyl sulfate (SDS), 0.4% deoxycholic acid (DOC) with protease inhibitors (1 μg/mL pepstatin A, 10 μg/mL leupeptin, and 20 μg/mL aprotinin). Antisense and sense ODNs for P2Y₁₁ were designed and checked for specificity using Prime BLAST against the human P2Y₁₁ sequence (NC_000019.10). The sequences used for the antisense ODNs were as follows: 5'-CAAGGCCACCCTAACCACTG-3' and 5'-CTCTCCCTTCCCTGCGTTA-3'. The sequences for sense ODNs were 5'-CAACGTCTCGGGTAAGGAGAA-3' and 5'-ATGAGGAAG-GAAACGTGGGT-3'. For all ODNs, the last three bases on the 3' end were phosphorothioated to reduce degradation by cellular nucleases. ODNs were dissolved in nuclease-free water to a 1 mM concentration.

Human adipose arteries were permeabilized in a solution containing (in mM): 120 KCl, 2 MgCl₂, 10 EGTA, 5 Na₂ATP, 20 TES (2-[(2-Hydroxy-1, 1-bis(hydroxymethyl)ethyl)amino] ethanesulfonic acid, N-[Tris(hydroxymethyl)methyl]-2-aminoethanesulfonic acid), pH adjusted to 6.8 with NaOH. Arteries were first incubated in permeabilization solution for 20 min at 4°C, followed by a 4 hr incubation at 4°C in a solution supplemented with ODNs (2 μM). Arteries were placed in an ODN-containing solution with elevated MgCl₂ (10 mM) for 1 hr at room temperature. Permeabilization was reversed by incubating arteries for 30 min at room temperature in MOPS physiological solution composed of (in mM): 140 NaCl, 5 KCl, 10 MgCl₂, 5 D-glucose, and 2 MOPS, pH adjusted to 7.1 with NaOH. Arteries were incubated in a MOPS solution containing 0.01, 0.1, and 1.8 mM CaCl₂ in 15 min intervals, increasing Ca²⁺ gradually. After completing reverse permeabilization, arteries were cultured in

D-MEM/F-12 culture media supplemented with L-glutamine (2 mM) for 2.5 days at 37°C. Arteries were then lysed and used for Western blot (see Immunoblotting section).

Adenovirus infection of unpassaged arterial myocytes and Fluorescence Resonance Energy Transfer (FRET)

Laminin (Life Technologies, Grand Island, NY) diluted 100x in sterile-filtered PBS (137 mM NaCl, 2.7 mM KCl, 10 mM Na₂HPO₄, 1.8 mM KH₂PO₄, pH = 7.4) was used to coat #0 glass coverslips (Karl Hecht, Sondheim, Germany). After adding diluted laminin (100 μL per coverslip), coverslips were placed in a 37° C incubator with 5% CO₂ for a minimum of 2 hr, then moved to 24-well plate wells (Falcon, Tewksbury, MA), and washed 3x with sterile-filtered PBS. Freshly dissociated human adipose arterial myocytes and mouse aortic cells were plated on the laminin-coated coverslips with 500 μL of serum-containing media for 48 hr in a 37° C incubator with 5% CO₂. Media was then replaced with 500 μL of serum-free media-containing virus coding for the membrane-targeted Epac1-camps-based FRET sensor (ICUE3-PM) (Allen et al., 2006; Liu et al., 2011) and placed at 37° C with 5% CO₂ for another 36 hr. Viruses were produced using the AdEasy system (Qbiogene, Carlsbad, CA) (Luo et al., 2007). After infection, media was changed to serum-free media without virus. Glass coverslips were transferred to glass bottom culture dishes (MatTek, Ashland, MA) containing 3 mL PBS at room temperature.

A Zeiss AXIO Observer A1 inverted fluorescence microscope (San Diego, CA) equipped with a Hamamatsu Orca-Flash 4.0 digital camera (Bridgewater, NJ) and controlled by Metaflor software (Molecular Devices, Sunnyvale, CA) acquired phase contrast, CFP480, and FRET images. Phase contrast and CFP480 images were collected with 20x and 40x oil immersion objective lenses, while FRET images were collected using only the 40x oil immersion objective lens. Images for FRET analysis were recorded by exciting the donor fluorophore at 430–455 nm and measuring emission fluorescence with two filters (475DF40 for cyan and 535DF25 for yellow). Images were subjected to background subtraction and acquired every 30 s with exposure time of 200 ms for each channel. The donor/acceptor FRET ratio was calculated and normalized to the ratio value of baseline. CFP480 images were acquired by exciting the donor fluorophore at 430–455 nm and measuring emission fluorescence with the 475DF40 filter for 25 ms. Averages of normalized curves and maximal response to stimulation were graphed based on FRET ratio changes. Binding of cAMP to ICUE3-PM led to decreases in the YFP/CFP ratio, indicating increases in cAMP levels.

Chemicals and statistics

All chemical reagents were from Sigma-Aldrich (St. Louis, MO) unless otherwise stated. Data were analyzed using GraphPad Prism software and expressed as mean ±SEM. Data were assessed for potential outliers using the GraphPad Prism Outlier Test and for normality of distribution using appropriate tests. Statistical significance was then determined using suitable paired or unpaired Student's t-test, nonparametric tests or One-way analysis of variance (ANOVA) for multiple comparisons with proper post hoc test. p<0.05 was considered statistically significant (denoted by * in figures).

Acknowledgements

We thank members of the Navedo Lab for technical support. We also thank Dr. Charles Kennedy from the University of Strathclyde for helpful discussions and advice on purinergic signaling in the vasculature.

Additional information

Funding

Funder	Grant reference number	Author
National Heart, Lung, and Blood Institute	R01HL098200	Manuel F Navedo
National Heart, Lung, and Blood Institute	R01HL121059	Manuel F Navedo

National Institute of Neurological Disorders and Stroke	R01NS078792	Johannes W Hell
National Institute on Aging	R01AG055357	Johannes W Hell
National Institute of General Medical Sciences	T32GM099608	Maria Paz Prada
National Heart, Lung, and Blood Institute	T32HL086350	Arsalan U Syed Matthew A Nystoriak
National Institute of Diabetes and Digestive and Kidney Diseases	R01DK57236	Sean M Ward
National Institute of Neurological Disorders and Stroke	F31NS086226	Olivia R Buonarati
American Heart Association	16SDG27260070	Matthew A Nystoriak
American Heart Association	18POST34060234	Debapriya Ghosh
National Heart, Lung, and Blood Institute	R01HL127764	Yang K Xiang
National Heart, Lung, and Blood Institute	R01HL112413	Yang K Xiang
University of California, Davis	Academic Federation Innovative Development Award	Madeline Nieves-Cintrón

The funders had no role in study design, data collection and interpretation, or the decision to submit the work for publication.

Author contributions

Maria Paz Prada, Conceptualization, Data curation, Formal analysis, Validation, Investigation, Visualization, Methodology, Writing—original draft, Writing—review and editing; Arsalan U Syed, Olivia R Buonarati, Debapriya Ghosh, Formal analysis, Validation, Investigation, Methodology, Writing—review and editing; Gopireddy R Reddy, Formal analysis, Validation, Investigation, Writing—review and editing; Matthew A Nystoriak, Formal analysis, Investigation, Writing—review and editing; Sergi Simó, Daisuke Sato, Formal analysis, Investigation, Methodology, Writing—review and editing; Kent C Sasse, Resources, Writing—review and editing, Revising the article for important clinical and intellectual content; Sean M Ward, Luis F Santana, Resources, Writing—review and editing; Yang K Xiang, Resources, Formal analysis, Writing—review and editing; Johannes W Hell, Resources, Formal analysis, Supervision, Writing—review and editing; Madeline Nieves-Cintrón, Conceptualization, Resources, Data curation, Formal analysis, Funding acquisition, Supervision, Investigation, Visualization, Methodology, Writing—original draft, Writing—review and editing; Manuel F Navedo, Conceptualization, Resources, Data curation, Formal analysis, Supervision, Funding acquisition, Validation, Investigation, Visualization, Methodology, Writing—original draft, Project administration, Writing—review and editing

Author ORCIDs

Luis F Santana  <http://orcid.org/0000-0002-4297-8029>

Manuel F Navedo  <http://orcid.org/0000-0001-6864-6594>

Ethics

Human subjects: This statement is already in our Materials and Methods section - Samples were obtained after Institutional Review Board (IRB) approval from the University of Nevada Reno School of Medicine (IRB ID: 2013-019) and in accordance with the guidelines of the Declaration of Helsinki. The need for informed consent was waived by IRBs at the University of Nevada Reno School of Medicine (IRB ID: 2013-019) and the University of California Davis (IRB ID: 597267-1) because the tissue is considered "waste", has no codification that could be used to identify patients and was determined not to be human subject research in accordance with United States of America federal regulations, as defined by 45 CFR 46.102(f). This precludes the acquisition of detailed clinical profiles other than

sex, age and whether the patient nondiabetic or diabetic. Only samples from nondiabetic patients were used.

Animal experimentation: This statement is already in our Materials and Methods section -Male wild-type C57BL/6J (wt) mice of 5 to 8 weeks of age were euthanized with a lethal dose of sodium pentobarbital (250 mg/kg; intraperitoneally), as approved by the University of California, Davis Animal Care and Use Committee (protocol #: 20321).

Decision letter and Author response

Decision letter <https://doi.org/10.7554/eLife.42214.073>

Author response <https://doi.org/10.7554/eLife.42214.074>

Additional files

Supplementary files

- Supplementary file 1. K⁺-induced constriction and baseline and passive diameters of arteries from wild type and S1928A mice.

DOI: <https://doi.org/10.7554/eLife.42214.068>

- Supplementary file 2. Arterial tone from wild type and S1928A mouse arteries.

DOI: <https://doi.org/10.7554/eLife.42214.069>

- Supplementary file 3. Human nondiabetic patients undergoing surgical sleeve gastrectomy.

DOI: <https://doi.org/10.7554/eLife.42214.070>

- Transparent reporting form

DOI: <https://doi.org/10.7554/eLife.42214.071>

Data availability

All data generated or analyzed during this study are included in the manuscript as supporting files - source data files for each dataset.

References

- Abd-Elrahman KS**, Walsh MP, Cole WC. 2015. Abnormal Rho-associated kinase activity contributes to the dysfunctional myogenic response of cerebral arteries in type 2 diabetes. *Canadian Journal of Physiology and Pharmacology* **93**:177–184. DOI: <https://doi.org/10.1139/cjpp-2014-0437>, PMID: 25660561
- Allen MD**, DiPilato LM, Rahdar M, Ren YR, Chong C, Liu JO, Zhang J. 2006. Reading dynamic kinase activity in living cells for high-throughput screening. *ACS Chemical Biology* **1**:371–376. DOI: <https://doi.org/10.1021/cb600202f>, PMID: 17163774
- Amisten S**, Melander O, Wihlborg AK, Berglund G, Erlinge D. 2007. Increased risk of acute myocardial infarction and elevated levels of C-reactive protein in carriers of the Thr-87 variant of the ATP receptor P2Y11. *European Heart Journal* **28**:13–18. DOI: <https://doi.org/10.1093/eurheartj/ehl410>, PMID: 17135283
- Aronson D**. 2008. Hyperglycemia and the pathobiology of diabetic complications. *Advances in Cardiology* **45**:1–16. DOI: <https://doi.org/10.1159/000115118>, PMID: 18230953
- Balogh J**, Wihlborg AK, Isackson H, Joshi BV, Jacobson KA, Arner A, Erlinge D. 2005. Phospholipase C and cAMP-dependent positive inotropic effects of ATP in mouse cardiomyocytes via P2Y11-like receptors. *Journal of Molecular and Cellular Cardiology* **39**:223–230. DOI: <https://doi.org/10.1016/j.yjmcc.2005.03.007>, PMID: 15893764
- Barragán-Iglesias P**, Pineda-Farías JB, Cervantes-Durán C, Bravo-Hernández M, Rocha-González HI, Murbartíán J, Granados-Soto V. 2014. Role of spinal P2Y6 and P2Y11 receptors in neuropathic pain in rats: possible involvement of glial cells. *Molecular Pain* **10**:29. DOI: <https://doi.org/10.1186/1744-8069-10-29>, PMID: 24886406
- Barragán-Iglesias P**, Mendoza-Garcés L, Pineda-Farías JB, Solano-Olivares V, Rodríguez-Silverio J, Flores-Murrieta FJ, Granados-Soto V, Rocha-González HI. 2015. Participation of peripheral P2Y1, P2Y6 and P2Y11 receptors in formalin-induced inflammatory pain in rats. *Pharmacology Biochemistry and Behavior* **128**:23–32. DOI: <https://doi.org/10.1016/j.pbb.2014.11.001>, PMID: 25449358
- Bauman AL**, Soughayer J, Nguyen BT, Willoughby D, Carnegie GK, Wong W, Hoshi N, Langeberg LK, Cooper DM, Dessauer CW, Scott JD. 2006. Dynamic regulation of cAMP synthesis through anchored PKA-adenylyl cyclase V/VI complexes. *Molecular Cell* **23**:925–931. DOI: <https://doi.org/10.1016/j.molcel.2006.07.025>, PMID: 16973443
- Bolte S**, Cordelières FP. 2006. A guided tour into subcellular colocalization analysis in light microscopy. *Journal of Microscopy* **224**:213–232. DOI: <https://doi.org/10.1111/j.1365-2818.2006.01706.x>, PMID: 17210054

- Brayden JE**, Li Y, Tavares MJ. 2013. Purinergic receptors regulate myogenic tone in cerebral parenchymal arterioles. *Journal of Cerebral Blood Flow & Metabolism* **33**:293–299. DOI: <https://doi.org/10.1038/jcbfm.2012.169>, PMID: 23168530
- Brown A**, Reynolds LR, Bruemmer D. 2010. Intensive glycemic control and cardiovascular disease: an update. *Nature Reviews Cardiology* **7**:369–375. DOI: <https://doi.org/10.1038/nrcardio.2010.35>, PMID: 20404853
- Buonarati OR**, Henderson PB, Murphy GG, Horne MC, Hell JW. 2017. Proteolytic processing of the L-type calcium channel $\alpha_{1,2}$ subunit in neurons. *F1000Research* **6**:1166. DOI: <https://doi.org/10.12688/f1000research.11808.1>, PMID: 28781760
- Cheng EP**, Yuan C, Navedo MF, Dixon RE, Nieves-Cintrón M, Scott JD, Santana LF. 2011. Restoration of normal L-type Ca^{2+} channel function during timothy syndrome by ablation of an anchoring protein. *Circulation Research* **109**:255–261. DOI: <https://doi.org/10.1161/CIRCRESAHA.111.248252>, PMID: 21700933
- Communi D**, Govaerts C, Parmentier M, Boeynaems JM. 1997. Cloning of a human purinergic P2Y receptor coupled to phospholipase C and adenylyl cyclase. *Journal of Biological Chemistry* **272**:31969–31973. DOI: <https://doi.org/10.1074/jbc.272.51.31969>, PMID: 9405388
- Communi D**, Robaye B, Boeynaems JM. 1999. Pharmacological characterization of the human P2Y11 receptor. *British Journal of Pharmacology* **128**:1199–1206. DOI: <https://doi.org/10.1038/sj.bjp.0702909>, PMID: 10578132
- Cooper ME**, Bonnet F, Oldfield M, Jandeleit-Dahm K. 2001. Mechanisms of diabetic vasculopathy: an overview. *American Journal of Hypertension* **14**:475–486. DOI: [https://doi.org/10.1016/S0895-7061\(00\)01323-6](https://doi.org/10.1016/S0895-7061(00)01323-6), PMID: 11368471
- Costa G**, Pereira T, Neto AM, Cristóvão AJ, Ambrósio AF, Santos PF. 2009. High glucose changes extracellular adenosine triphosphate levels in rat retinal cultures. *Journal of Neuroscience Research* **87**:1375–1380. DOI: <https://doi.org/10.1002/jnr.21956>, PMID: 19084903
- Davare MA**, Dong F, Rubin CS, Hell JW. 1999. The A-kinase anchor protein MAP2B and cAMP-dependent protein kinase are associated with class C L-type calcium channels in neurons. *Journal of Biological Chemistry* **274**:30280–30287. DOI: <https://doi.org/10.1074/jbc.274.42.30280>, PMID: 10514522
- Davare MA**, Horne MC, Hell JW. 2000. Protein phosphatase 2A is associated with class C L-type calcium channels (Cav1.2) and antagonizes channel phosphorylation by cAMP-dependent protein kinase. *Journal of Biological Chemistry* **275**:39710–39717. DOI: <https://doi.org/10.1074/jbc.M005462200>, PMID: 10984483
- Davare MA**, Hell JW. 2003. Increased phosphorylation of the neuronal L-type calcium channel $\text{Ca}_v(1.2)$ during aging. *PNAS* **100**:16018–16023. DOI: <https://doi.org/10.1073/pnas.2236970100>, PMID: 14665691
- DeFronzo RA**, Eldor R, Abdul-Ghani M. 2013. Pathophysiologic approach to therapy in patients with newly diagnosed type 2 diabetes. *Diabetes Care* **36 Suppl 2**:S127–S138. DOI: <https://doi.org/10.2337/dcS13-2011>, PMID: 23882037
- del Puerto A**, Díaz-Hernández JI, Tapia M, Gomez-Villafuertes R, Benitez MJ, Zhang J, Miras-Portugal MT, Wandosell F, Díaz-Hernández M, Garrido JJ. 2012. Adenylyl cyclase 5 coordinates the action of ADP, P2Y1, P2Y13 and ATP-gated P2X7 receptors on axonal elongation. *Journal of Cell Science* **125**:176–188. DOI: <https://doi.org/10.1242/jcs.091736>, PMID: 22250198
- Dempsey GT**, Vaughan JC, Chen KH, Bates M, Zhuang X. 2011. Evaluation of fluorophores for optimal performance in localization-based super-resolution imaging. *Nature Methods* **8**:1027–1036. DOI: <https://doi.org/10.1038/nmeth.1768>, PMID: 22056676
- Dixon RE**, Yuan C, Cheng EP, Navedo MF, Santana LF. 2012. Ca^{2+} signaling amplification by oligomerization of L-type Cav1.2 channels. *PNAS* **109**:1749–1754. DOI: <https://doi.org/10.1073/pnas.1116731109>, PMID: 22307641
- Dixon RE**, Moreno CM, Yuan C, Opitz-Araya X, Binder MD, Navedo MF, Santana LF. 2015. Graded Ca^{2+} /calmodulin-dependent coupling of voltage-gated $\text{Ca}_v1.2$ channels. *eLife* **4**:e05608. DOI: <https://doi.org/10.7554/eLife.05608>
- Dreisig K**, Kornum BR. 2016. A critical look at the function of the P2Y11 receptor. *Purinergic Signalling* **12**:427–437. DOI: <https://doi.org/10.1007/s11302-016-9514-7>, PMID: 27246167
- Ecke D**, Hanck T, Tulapurkar ME, Schäfer R, Kassack M, Stricker R, Reiser G. 2008. Hetero-oligomerization of the P2Y11 receptor with the P2Y1 receptor controls the internalization and ligand selectivity of the P2Y11 receptor. *The Biochemical Journal* **409**:107–116. DOI: <https://doi.org/10.1042/BJ20070671>, PMID: 17824841
- Efendiev R**, Samelson BK, Nguyen BT, Phatarpekar PV, Baameur F, Scott JD, Dessauer CW. 2010. AKAP79 interacts with multiple adenylyl cyclase (AC) isoforms and scaffolds AC5 and -6 to α -amino-3-hydroxyl-5-methyl-4-isoxazole-propionate (AMPA) receptors. *Journal of Biological Chemistry* **285**:14450–14458. DOI: <https://doi.org/10.1074/jbc.M110.109769>, PMID: 20231277
- Fleischhacker E**, Esenabhalu VE, Spitaler M, Holzmann S, Skrabal F, Koidl B, Kostner GM, Graier WF. 1999. Human diabetes is associated with hyperreactivity of vascular smooth muscle cells due to altered subcellular Ca^{2+} distribution. *Diabetes* **48**:1323–1330. DOI: <https://doi.org/10.2337/diabetes.48.6.1323>, PMID: 10342823
- Fölling J**, Bossi M, Bock H, Medda R, Wurm CA, Hein B, Jakobs S, Eggeling C, Hell SW. 2008. Fluorescence nanoscopy by ground-state depletion and single-molecule return. *Nature Methods* **5**:943–945. DOI: <https://doi.org/10.1038/nmeth.1257>, PMID: 18794861
- Fraser ID**, Cong M, Kim J, Rollins EN, Daaka Y, Lefkowitz RJ, Scott JD. 2000. Assembly of an A kinase-anchoring protein- $\beta(2)$ -adrenergic receptor complex facilitates receptor phosphorylation and signaling. *Current Biology* **10**:409–412. DOI: [https://doi.org/10.1016/S0960-9822\(00\)00419-X](https://doi.org/10.1016/S0960-9822(00)00419-X), PMID: 10753752
- Fredriksson S**, Gullberg M, Jarvius J, Olsson C, Pietras K, Gústafsdóttir SM, Ostman A, Landegren U. 2002. Protein detection using proximity-dependent DNA ligation assays. *Nature Biotechnology* **20**:473–477. DOI: <https://doi.org/10.1038/nbt0502-473>, PMID: 11981560

- Gao T**, Yatani A, Dell'Acqua ML, Sako H, Green SA, Dascal N, Scott JD, Hosey MM. 1997. cAMP-dependent regulation of cardiac L-type Ca²⁺ channels requires membrane targeting of PKA and phosphorylation of channel subunits. *Neuron* **19**:185–196. DOI: [https://doi.org/10.1016/S0896-6273\(00\)80358-X](https://doi.org/10.1016/S0896-6273(00)80358-X), PMID: 9247274
- Haas M**, Shaaban A, Reiser G. 2014. Alanine-(87)-threonine polymorphism impairs signaling and internalization of the human P2Y₁₁ receptor, when co-expressed with the P2Y₁ receptor. *Journal of Neurochemistry* **129**:602–613. DOI: <https://doi.org/10.1111/jnc.12666>, PMID: 24524250
- Hall DD**, Feekes JA, Arachchige Don AS, Shi M, Hamid J, Chen L, Strack S, Zamponi GW, Horne MC, Hell JW. 2006. Binding of protein phosphatase 2A to the L-type calcium channel Cav1.2 next to Ser1928, its main PKA site, is critical for Ser1928 dephosphorylation. *Biochemistry* **45**:3448–3459. DOI: <https://doi.org/10.1021/bi051593z>, PMID: 16519540
- Hall DD**, Dai S, Tseng PY, Malik Z, Nguyen M, Matt L, Schnizler K, Shephard A, Mohapatra DP, Tsuruta F, Dolmetsch RE, Christel CJ, Lee A, Burette A, Weinberg RJ, Hell JW. 2013. Competition between α -actinin and Ca²⁺-calmodulin controls surface retention of the L-type Ca²⁺ channel ca(V)1.2. *Neuron* **78**:483–497. DOI: <https://doi.org/10.1016/j.neuron.2013.02.032>, PMID: 23664615
- Hazama A**, Hayashi S, Okada Y. 1998. Cell surface measurements of ATP release from single pancreatic β cells using a novel biosensor technique. *Pflügers Archiv European Journal of Physiology* **437**:31–35. DOI: <https://doi.org/10.1007/s004240050742>
- Hess P**, Lansman JB, Tsien RW. 1986. Calcium channel selectivity for divalent and monovalent cations. voltage and concentration dependence of single channel current in ventricular heart cells. *The Journal of General Physiology* **88**:293–319. DOI: <https://doi.org/10.1085/jgp.88.3.293>, PMID: 2428919
- Hien TT**, Turczyńska KM, Dahan D, Ekman M, Grossi M, Sjögren J, Nilsson J, Braun T, Boettger T, Garcia-Vaz E, Stenkula K, Swärd K, Gomez MF, Albinsson S. 2016. Elevated glucose levels promote contractile and cytoskeletal gene expression in vascular smooth muscle via rho/Protein kinase C and actin polymerization. *Journal of Biological Chemistry* **291**:3552–3568. DOI: <https://doi.org/10.1074/jbc.M115.654384>, PMID: 26683376
- Jackson R**, Brennan S, Fielding P, Sims MW, Challiss RA, Adlam D, Squire IB, Rainbow RD. 2016. Distinct and complementary roles for α and β isoenzymes of PKC in mediating vasoconstrictor responses to acutely elevated glucose. *British Journal of Pharmacology* **173**:870–887. DOI: <https://doi.org/10.1111/bph.13399>, PMID: 26660275
- Johnstone TB**, Agarwal SR, Harvey RD, Ostrom RS. 2018. cAMP signaling compartmentation: adenylyl cyclases as anchors of dynamic signaling complexes. *Molecular Pharmacology* **93**:270–276. DOI: <https://doi.org/10.1124/mol.117.110825>, PMID: 29217670
- Kennedy C**. 2017. P2Y₁₁ receptors: properties, distribution and functions. *Advances in Experimental Medicine and Biology* **1051**:107–122. DOI: https://doi.org/10.1007/5584_2017_89, PMID: 29134605
- King BF**, Townsend-Nicholson A. 2008. Involvement of P2Y₁ and P2Y₁₁ purinoceptors in parasympathetic inhibition of colonic smooth muscle. *Journal of Pharmacology and Experimental Therapeutics* **324**:1055–1063. DOI: <https://doi.org/10.1124/jpet.107.131169>, PMID: 18048695
- Kizub IV**, Pavlova OO, Johnson CD, Soloviev AI, Zholos AV. 2010. Rho kinase and protein kinase C involvement in vascular smooth muscle myofilament calcium sensitization in arteries from diabetic rats. *British Journal of Pharmacology* **159**:1724–1731. DOI: <https://doi.org/10.1111/j.1476-5381.2010.00666.x>, PMID: 20218979
- Knot HJ**, Nelson MT. 1998. Regulation of arterial diameter and wall [Ca²⁺] in cerebral arteries of rat by membrane potential and intravascular pressure. *The Journal of Physiology* **508**:199–209. DOI: <https://doi.org/10.1111/j.1469-7793.1998.199br.x>, PMID: 9490839
- Lagaud GJ**, Masih-Khan E, Kai S, van Breemen C, Dubé GP. 2001. Influence of type II diabetes on arterial tone and endothelial function in murine mesenteric resistance arteries. *Journal of Vascular Research* **38**:578–589. DOI: <https://doi.org/10.1159/000051094>, PMID: 11740157
- Langeberg LK**, Scott JD. 2015. Signalling scaffolds and local organization of cellular behaviour. *Nature Reviews Molecular Cell Biology* **16**:232–244. DOI: <https://doi.org/10.1038/nrm3966>, PMID: 25785716
- Lemke T**, Welling A, Christel CJ, Blaich A, Bernhard D, Lenhardt P, Hofmann F, Moosmang S. 2008. Unchanged beta-adrenergic stimulation of cardiac L-type calcium channels in ca v 1.2 phosphorylation site S1928A mutant mice. *Journal of Biological Chemistry* **283**:34738–34744. DOI: <https://doi.org/10.1074/jbc.M804981200>, PMID: 18829456
- Liu S**, Zhang J, Xiang YK. 2011. FRET-based direct detection of dynamic protein kinase A activity on the sarcoplasmic reticulum in cardiomyocytes. *Biochemical and Biophysical Research Communications* **404**:581–586. DOI: <https://doi.org/10.1016/j.bbrc.2010.11.116>, PMID: 21130738
- Lohman AW**, Billaud M, Isakson BE. 2012. Mechanisms of ATP release and signalling in the blood vessel wall. *Cardiovascular Research* **95**:269–280. DOI: <https://doi.org/10.1093/cvr/cvs187>, PMID: 22678409
- Luo J**, Deng ZL, Luo X, Tang N, Song WX, Chen J, Sharff KA, Luu HH, Haydon RC, Kinzler KW, Vogelstein B, He TC. 2007. A protocol for rapid generation of recombinant adenoviruses using the AdEasy system. *Nature Protocols* **2**:1236–1247. DOI: <https://doi.org/10.1038/nprot.2007.135>, PMID: 17546019
- Meis S**, Hamacher A, Hongwiset D, Marzian C, Wiese M, Eckstein N, Royer HD, Communi D, Boeynaems JM, Hausmann R, Schmalzing G, Kassack MU. 2010. NF546 [4,4'-(carbonylbis(imino-3,1-phenylene-carbonylimino)-3,1-(4-methyl-phenylene)-carbonylimino)-bis(1,3-xylene-alpha,alpha'-diphosphonic acid) tetrasodium salt] is a non-nucleotide P2Y₁₁ agonist and stimulates release of interleukin-8 from human monocyte-derived dendritic cells. *Journal of Pharmacology and Experimental Therapeutics* **332**:238–247. DOI: <https://doi.org/10.1124/jpet.109.157750>, PMID: 19815812

- Moien-Afshari F**, Ghosh S, Elmi S, Khazaei M, Rahman MM, Sallam N, Laher I. 2008. Exercise restores coronary vascular function independent of myogenic tone or hyperglycemic status in db/db mice. *American Journal of Physiology-Heart and Circulatory Physiology* **295**:H1470–H1480. DOI: <https://doi.org/10.1152/ajpheart.00016.2008>, PMID: 18641279
- Montero D**, Walther G, Pérez-Martin A, Vicente-Salar N, Roche E, Vinet A. 2013. Vascular smooth muscle function in type 2 diabetes mellitus: a systematic review and meta-analysis. *Diabetologia* **56**:2122–2133. DOI: <https://doi.org/10.1007/s00125-013-2974-1>, PMID: 23864267
- Moore CL**, Nelson PL, Parelkar NK, Rusch NJ, Rhee SW. 2014. Protein kinase A-phosphorylated KV1 channels in PSD95 signaling complex contribute to the resting membrane potential and diameter of cerebral arteries. *Circulation Research* **114**:1258–1267. DOI: <https://doi.org/10.1161/CIRCRESAHA.114.303167>, PMID: 24585759
- Morotti S**, Nieves-Cintrón M, Nystoriak MA, Navedo MF, Grandi E. 2017. Predominant contribution of L-type Cav1.2 channel stimulation to impaired intracellular calcium and cerebral artery vasoconstriction in diabetic hyperglycemia. *Channels* **11**:340–346. DOI: <https://doi.org/10.1080/19336950.2017.1293220>, PMID: 28631947
- Murphy JG**, Sanderson JL, Gorski JA, Scott JD, Catterall WA, Sather WA, Dell'Acqua ML. 2014. AKAP-anchored PKA maintains neuronal L-type calcium channel activity and NFAT transcriptional signaling. *Cell Reports* **7**: 1577–1588. DOI: <https://doi.org/10.1016/j.celrep.2014.04.027>, PMID: 24835999
- Navedo MF**, Nieves-Cintrón M, Amberg GC, Yuan C, Votaw VS, Lederer WJ, McKnight GS, Santana LF. 2008. AKAP150 is required for stuttering persistent Ca²⁺ sparklets and angiotensin II-induced hypertension. *Circulation Research* **102**:e1–e11. DOI: <https://doi.org/10.1161/CIRCRESAHA.107.167809>, PMID: 18174462
- Navedo MF**, Cheng EP, Yuan C, Votaw S, Molkentin JD, Scott JD, Santana LF. 2010a. Increased coupled gating of L-type Ca²⁺ channels during hypertension and timothy syndrome. *Circulation Research* **106**:748–756. DOI: <https://doi.org/10.1161/CIRCRESAHA.109.213363>, PMID: 20110531
- Navedo MF**, Takeda Y, Nieves-Cintrón M, Molkentin JD, Santana LF. 2010b. Elevated Ca²⁺ sparklet activity during acute hyperglycemia and diabetes in cerebral arterial smooth muscle cells. *American Journal of Physiology-Cell Physiology* **298**:C211–C220. DOI: <https://doi.org/10.1152/ajpcell.00267.2009>, PMID: 19846755
- Nieves-Cintrón M**, Nystoriak MA, Prada MP, Johnson K, Fayer W, Dell'Acqua ML, Scott JD, Navedo MF. 2015. Selective down-regulation of KV2.1 function contributes to enhanced arterial tone during diabetes. *The Journal of Biological Chemistry* **290**:7918–7929. DOI: <https://doi.org/10.1074/jbc.M114.622811>, PMID: 25670860
- Nieves-Cintrón M**, Syed AU, Buonarati OR, Rigor RR, Nystoriak MA, Ghosh D, Sasse KC, Ward SM, Santana LF, Hell JW, Navedo MF. 2017. Impaired BK_{Ca} channel function in native vascular smooth muscle from humans with type 2 diabetes. *Scientific Reports* **7**:14058. DOI: <https://doi.org/10.1038/s41598-017-14565-9>, PMID: 29070899
- Nieves-Cintrón M**, Syed AU, Nystoriak MA, Navedo MF. 2018. Regulation of voltage-gated potassium channels in vascular smooth muscle during hypertension and metabolic disorders. *Microcirculation* **25**:e12423. DOI: <https://doi.org/10.1111/micc.12423>, PMID: 29044853
- Nilsson J**, Nilsson LM, Chen YW, Molkentin JD, Erlinge D, Gomez MF. 2006. High glucose activates nuclear factor of activated T cells in native vascular smooth muscle. *Arteriosclerosis, Thrombosis, and Vascular Biology* **26**:794–800. DOI: <https://doi.org/10.1161/01.ATV.0000209513.00765.13>, PMID: 16469950
- Nishimura A**, Sunggip C, Tozaki-Saitoh H, Shimauchi T, Numaga-Tomita T, Hirano K, Ide T, Boeynaems JM, Kurose H, Tsuda M, Robaye B, Inoue K, Nishida M. 2016. Purinergic P2Y₆ receptors heterodimerize with angiotensin AT1 receptors to promote angiotensin II-induced hypertension. *Science Signaling* **9**:ra7. DOI: <https://doi.org/10.1126/scisignal.aac9187>, PMID: 26787451
- Nishimura A**, Sunggip C, Oda S, Numaga-Tomita T, Tsuda M, Nishida M. 2017. Purinergic P2Y receptors: molecular diversity and implications for treatment of cardiovascular diseases. *Pharmacology & Therapeutics* **180**:113–128. DOI: <https://doi.org/10.1016/j.pharmthera.2017.06.010>, PMID: 28648830
- Nystoriak MA**, Nieves-Cintrón M, Nygren PJ, Hinke SA, Nichols CB, Chen CY, Puglisi JL, Izu LT, Bers DM, Dell'acqua ML, Scott JD, Santana LF, Navedo MF. 2014. AKAP150 contributes to enhanced vascular tone by facilitating large-conductance Ca²⁺-activated K⁺ channel remodeling in hyperglycemia and diabetes mellitus. *Circulation Research* **114**:607–615. DOI: <https://doi.org/10.1161/CIRCRESAHA.114.302168>, PMID: 24323672
- Nystoriak MA**, Nieves-Cintrón M, Patriarchi T, Buonarati OR, Prada MP, Morotti S, Grandi E, Fernandes JD, Forbush K, Hofmann F, Sasse KC, Scott JD, Ward SM, Hell JW, Navedo MF. 2017. Ser1928 phosphorylation by PKA stimulates the L-type Ca²⁺ channel CaV1.2 and vasoconstriction during acute hyperglycemia and diabetes. *Science Signaling* **10**:eaaf9647. DOI: <https://doi.org/10.1126/scisignal.aaf9647>, PMID: 28119464
- Parodi J**, Flores C, Aguayo C, Rudolph MI, Casanello P, Sobrevia L. 2002. Inhibition of nitrobenzylthioinosine-sensitive Adenosine transport by elevated D-glucose involves activation of P2Y₂ purinoceptors in human umbilical vein endothelial cells. *Circulation Research* **90**:570–577. DOI: <https://doi.org/10.1161/01.RES.0000012582.11979.8B>, PMID: 11909821
- Patriarchi T**, Qian H, Di Biase V, Malik ZA, Chowdhury D, Price JL, Hammes EA, Buonarati OR, Westenbroek RE, Catterall WA, Hofmann F, Xiang YK, Murphy GG, Chen CY, Navedo MF, Hell JW. 2016. Phosphorylation of Cav1.2 on S1928 uncouples the L-type Ca²⁺ channel from the β₂ adrenergic receptor. *The EMBO Journal* **35**: 1330–1345. DOI: <https://doi.org/10.15252/embj.201593409>, PMID: 27103070
- Pucéat M**, Bony C, Jaconi M, Vassort G. 1998. Specific activation of adenylyl cyclase V by a purinergic agonist. *FEBS Letters* **431**:189–194. DOI: [https://doi.org/10.1016/S0014-5793\(98\)00747-9](https://doi.org/10.1016/S0014-5793(98)00747-9), PMID: 9708900
- Qi AD**, Kennedy C, Harden TK, Nicholas RA. 2001. Differential coupling of the human P2Y₁₁ receptor to phospholipase C and adenylyl cyclase. *British Journal of Pharmacology* **132**:318–326. DOI: <https://doi.org/10.1038/sj.bjp.0703788>, PMID: 11156592

- Qian H**, Patriarchi T, Price JL, Matt L, Lee B, Nieves-Cintrón M, Buonarati OR, Chowdhury D, Nanou E, Nystoriak MA, Catterall WA, Poomvanicha M, Hofmann F, Navedo MF, Hell JW. 2017. Phosphorylation of Ser1928 mediates the enhanced activity of the L-type Ca²⁺ channel Cav1.2 by the β₂-adrenergic receptor in neurons. *Science Signaling* **10**:eaaf9659. DOI: <https://doi.org/10.1126/scisignal.aaf9659>, PMID: 28119465
- Reddy GR**, West TM, Jian Z, Jaradeh M, Shi Q, Wang Y, Chen-Izu Y, Xiang YK. 2018. Illuminating cell signaling with genetically encoded FRET biosensors in adult mouse cardiomyocytes. *The Journal of General Physiology* **150**:1567–1582. DOI: <https://doi.org/10.1085/jgp.201812119>, PMID: 30242036
- Schuchardt M**, Tölle M, van der Giet M. 2012. P2Y purinoceptors as potential emerging therapeutic target in vascular disease. *Current Pharmaceutical Design* **18**:6169–6180. DOI: <https://doi.org/10.2174/138161212803582504>, PMID: 23004340
- Sena CM**, Pereira AM, Seica R. 2013. Endothelial dysfunction — A major mediator of diabetic vascular disease. *Biochimica Et Biophysica Acta (BBA) - Molecular Basis of Disease* **1832**:2216–2231. DOI: <https://doi.org/10.1016/j.bbadis.2013.08.006>
- Straub SV**, Girouard H, Doetsch PE, Hannah RM, Wilkerson MK, Nelson MT. 2009. Regulation of intracerebral arteriolar tone by K(v) channels: effects of glucose and PKC. *American Journal of Physiology. Cell Physiology* **297**:C788–C796. DOI: <https://doi.org/10.1152/ajpcell.00148.2009>, PMID: 19605735
- Tajada S**, Moreno CM, O'Dwyer S, Woods S, Sato D, Navedo MF, Santana LF. 2017. Distance constraints on activation of TRPV4 channels by AKAP150-bound pK α in arterial myocytes. *The Journal of General Physiology* **149**:639–659. DOI: <https://doi.org/10.1085/jgp.201611709>
- Tousoulis D**, Papageorgiou N, Androulakis E, Siasos G, Latsios G, Tentolouris K, Stefanadis C. 2013. Diabetes mellitus-associated vascular impairment: novel circulating biomarkers and therapeutic approaches. *Journal of the American College of Cardiology* **62**:667–676. DOI: <https://doi.org/10.1016/j.jacc.2013.03.089>, PMID: 23948511
- von Kügelgen I**, Harden TK. 2011. Molecular pharmacology, physiology, and structure of the P2Y receptors. *Advances in Pharmacology* **61**:373–415. DOI: <https://doi.org/10.1016/B978-0-12-385526-8.00012-6>, PMID: 21586365
- Whelton PK**, Carey RM, Aronow WS, Casey DE, Collins KJ, Dennison Himmelfarb C, DePalma SM, Gidding S, Jamerson KA, Jones DW, MacLaughlin EJ, Muntner P, Ovbigele B, Smith SC, Spencer CC, Stafford RS, Taler SJ, Thomas RJ, Williams KA, Williamson JD, et al. 2018. 2017 ACC/AHA/AAPA/ABC/ACPM/AGS/APhA/ASH/ASPC/NMA/PCNA guideline for the prevention, detection, evaluation, and management of high blood pressure in adults: a report of the American college of cardiology/American heart association task force on clinical practice guidelines. *Hypertension* **71**:e13–e115. DOI: <https://doi.org/10.1161/HYP.0000000000000065>, PMID: 29133356
- Zampini V**, Valli P, Zucca G, Masetto S. 2006. Single-channel L-type Ca²⁺ currents in chicken embryo semicircular canal type I and type II hair cells. *Journal of Neurophysiology* **96**:602–612. DOI: <https://doi.org/10.1152/jn.01315.2005>, PMID: 16687612
- Zhang J**, Bal M, Bierbower S, Zaika O, Shapiro MS. 2011. AKAP79/150 signal complexes in G-protein modulation of neuronal ion channels. *Journal of Neuroscience* **31**:7199–7211. DOI: <https://doi.org/10.1523/JNEUROSCI.4446-10.2011>, PMID: 21562284
- Zhang M**, Patriarchi T, Stein IS, Qian H, Matt L, Nguyen M, Xiang YK, Hell JW. 2013. Adenylyl cyclase anchoring by a kinase anchor protein AKAP5 (AKAP79/150) is important for postsynaptic β-adrenergic signaling. *Journal of Biological Chemistry* **288**:17918–17931. DOI: <https://doi.org/10.1074/jbc.M112.449462>, PMID: 23649627