

UC Davis

UC Davis Previously Published Works

Title

The human immune response to Toxoplasma: Autophagy versus cell death

Permalink

<https://escholarship.org/uc/item/54t657dt>

Journal

PLOS Pathogens, 13(3)

ISSN

1553-7366

Authors

Krishnamurthy, Shruthi
Konstantinou, Eleni K
Young, Lucy H
[et al.](#)

Publication Date

2017

DOI

10.1371/journal.ppat.1006176

Peer reviewed

PEARLS

The human immune response to *Toxoplasma*: Autophagy versus cell death

Shruthi Krishnamurthy¹, Eleni K. Konstantinou², Lucy H. Young², Daniel A. Gold¹, Jeroen P. J. Saeij^{1*}

1 Department of Pathology, Microbiology and Immunology, University of California Davis, Davis, California, United States of America, **2** Department of Ophthalmology, Harvard Medical School, Boston, Massachusetts, United States of America

* jsaeij@ucdavis.edu

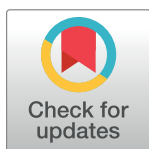
Introduction

Toxoplasma gondii is an obligate intracellular parasite that can infect a broad range of warm-blooded animals. In humans, it can cause serious disease in immune-compromised individuals or if contracted congenitally. In North America and Europe, strains belonging to the clonal types I, II, and III haplogroups predominate, while in South America a large variety of other “atypical” strains exist. These strains differ enormously in virulence in mice and there is evidence that different strains can also cause variable pathology in humans. In mice, the cytokine interferon gamma (IFN γ) induces multiple toxoplasmaicidal mechanisms and therefore plays a crucial role in immunity to *Toxoplasma*. Compared to mice, humans are more resistant to *Toxoplasma*. This is surprising because humans lack the Toll-like receptors 11/12 (TLR11/12) found in mice that bind to the *Toxoplasma* protein profilin and trigger a signaling cascade leading to the production of interleukin 12 (IL12), a key cytokine that stimulates IFN γ production. Humans also lack the multitude of murine immunity-related GTPases (IRGs) that are induced upon IFN γ stimulation and play a crucial role in the destruction of the membrane surrounding the parasitophorous vacuole (PV) in which *Toxoplasma* resides in the host cytoplasm. Thus, the mechanisms involved in the production of IFN γ in humans (Fig 1) differ from those in mice and the pathways that mediate parasite clearance are less well understood (reviewed in [1]). In this review, we focus on two mechanisms of *Toxoplasma* clearance by human cells: autophagy and cell death.

IFN γ -dependent, noncanonical autophagy-mediated clearance of *Toxoplasma* in humans

Autophagy is a degradation process that clears cytoplasmic material such as misfolded proteins and damaged organelles. Canonical autophagy involves the formation of a double membrane structure, the phagophore, which elongates to engulf cytoplasmic material. During autophagy, cytosolic microtubule-associated protein light chain 3 (LC3), a ubiquitin-like protein, is processed and conjugated to the lipid phosphatidylethanolamine (PE) to form LC3-II on the autophagosome membrane by a set of autophagy-related proteins (ATGs). Ubiquitylated cargo bound to ubiquitin-binding proteins such as p62 and nuclear dot protein 52 kDa (NDP52) then gets recruited through these proteins’ LC3-interacting regions [2]. The double membrane structure eventually closes to form the autophagosome, which ultimately fuses with lysosomes leading to degradation of the ubiquitylated cargo.

Noncanonical autophagy requires only a subset of the ATG proteins and these proteins can also be recruited to other membranes besides the phagophore, such as the *Toxoplasma* PV



OPEN ACCESS

Citation: Krishnamurthy S, Konstantinou EK, Young LH, Gold DA, Saeij JPJ (2017) The human immune response to *Toxoplasma*: Autophagy versus cell death. PLoS Pathog 13(3): e1006176. doi:10.1371/journal.ppat.1006176

Editor: Laura J Knoll, University of Wisconsin Medical School, UNITED STATES

Published: March 9, 2017

Copyright: © 2017 Krishnamurthy et al. This is an open access article distributed under the terms of the [Creative Commons Attribution License](https://creativecommons.org/licenses/by/4.0/), which permits unrestricted use, distribution, and reproduction in any medium, provided the original author and source are credited.

Funding: The Saeij lab is funded by NIAID (R21AI114930-01, R01AI080621-06A1) and NEI (R21EY024593-01A1). The funders had no role in study design, data collection and analysis, decision to publish, or preparation of the manuscript.

Competing interests: The authors have declared that no competing interests exist.

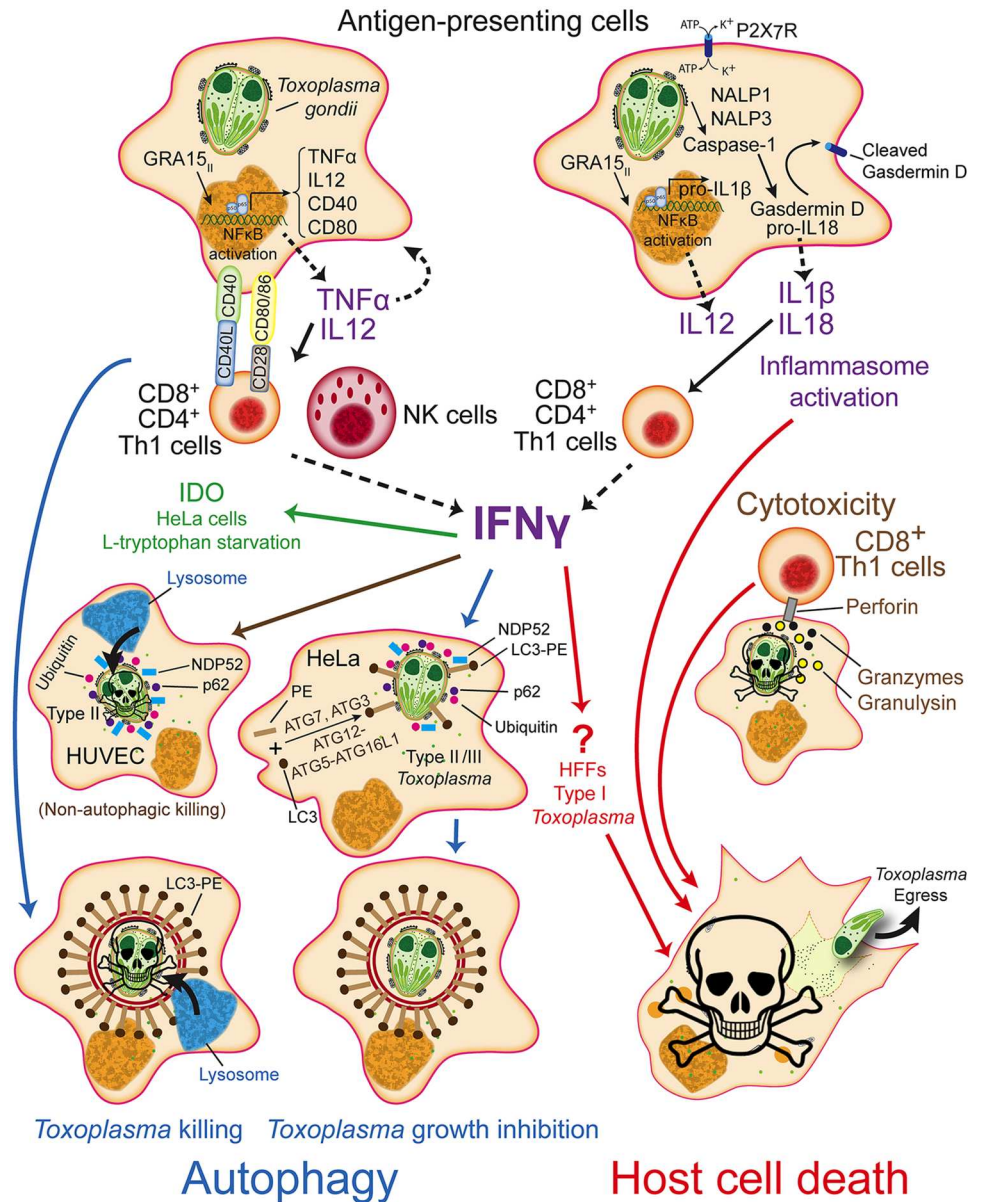


Fig 1. IFN γ dependent and independent toxoplasmacidal pathways in humans. See the main text for explanations.

doi:10.1371/journal.ppat.1006176.g001

membrane (PVM). For example, in IFN γ -stimulated murine cells, the ATG proteins that mediate the processing, lipidation, and attachment of LC3 to the PVM (ATG7, ATG3, and the ATG12-ATG5-ATG16L1 complex) are needed for the PVM recruitment of two subclasses of IFN γ -inducible GTPases: IRGs and guanylate binding proteins (GBPs). Once these GTPases are recruited to the LC3-tagged PVM, they mediate its vesiculation, resulting in parasite exposure to the cytosol and subsequent parasite and/or host cell death. In contrast to canonical autophagy, lysosome function and the ATG proteins that form the initial phagophore are dispensable [3]. In this sense, LC3 can be viewed as a protein that can tag membranes for subsequent destruction analogous to how ubiquitin tags proteins for destruction [4].

The two human IRGs, immunity-related GTPase family M protein (IRGM; truncated compared to mice) and immunity-related GTPase cinema (IRGC; only expressed in the testes), are not IFN γ -inducible. IRGM is known to play a role in autophagy and host defense to *Mycobacterium tuberculosis* [5], but its role in toxoplasmosis has not been investigated. Humans do express seven IFN γ -inducible GBPs that are involved in IFN γ -dependent clearance of pathogens such as *Chlamydia* and resistance towards certain viruses [6]. However, there is currently no evidence that these human GBPs are involved in IFN γ -mediated restriction of *Toxoplasma*, as they were not observed to localize around the PV of *Toxoplasma* in infected human foreskin fibroblasts (HFFs), and knockdown of *GBP1* and *GBP2* did not change the level of IFN γ -mediated restriction of *Toxoplasma* [7]. Furthermore, complete removal of the *GBP* locus in haploid HAP1 human cancer cells did not affect the IFN γ -induced *Toxoplasma* growth suppression [8]. By contrast, *GBP1* was required for growth restriction of the type II but not the type I *Toxoplasma* strain, even in the absence of IFN γ in the human lung epithelial cell line A549 despite its lack of decoration around *Toxoplasma* PVs [9].

In human cells, a role for IFN γ -mediated noncanonical autophagy in clearing *Toxoplasma* infection in a strain and cell type-specific manner has been described. Infection of HeLa cells with the type II and III strains, but not with the type I strain, leads to decoration of PVs with ubiquitin, LC3, p62, and NDP52 (Fig 1). Parasites in PVs that were positive for these autophagy markers had a reduced growth rate but the PVs were never observed to fuse with lysosomes. This noncanonical autophagy was only seen when cells were prestimulated with IFN γ and the strain differences were independent of known *Toxoplasma* mouse-specific virulence factors (polymorphic secreted proteins: ROP18, ROP5, ROP17) that antagonize the IRGs and GBPs [2]. IFN γ -stimulated human umbilical vein endothelial cells (HUVEC) kill type II (but not type I) parasites through another mechanism by which proteins on the PVM get ubiquitinated in the absence of LC3 deposition, leading to the recruitment of p62 and NDP52 and subsequent endosome/lysosome fusion, PV acidification, and parasite killing, without the involvement of autophagy (Fig 1) [10]. The mechanism for the growth restriction of types II/III in IFN γ -stimulated HeLa cells, the identity of the ubiquitinated proteins on the PVM in IFN γ -stimulated HeLa and HUVEC cells, the ubiquitin ligase that attaches ubiquitin to these proteins, and the *Toxoplasma* protein(s) that determine the strain differences in these processes are unknown. In IFN γ -stimulated HFFs, LC3 was also not recruited to the PVM of type I parasites [7]. Instead, type I infection induced rapid host cell death, which likely restricted parasite growth. In IFN γ -stimulated HeLa cells, type I parasite growth is also restricted, but this is dependent on the IFN γ -induced enzyme Indoleamine-2,3-dioxygenase (IDO), which degrades L-tryptophan, an amino acid for which *Toxoplasma* is auxotrophic (Fig 1; for a summary of cell type and species differences in IDO-mediated restriction of *Toxoplasma* see Table 2 in [11]). Because nutrient starvation can induce autophagy, it is possible that IFN γ -induced L-tryptophan starvation triggers *Toxoplasma* clearance via noncanonical, ubiquitin-mediated autophagy.

IFN γ -independent, autophagy-mediated clearance of *Toxoplasma* in humans

The costimulatory protein cluster of differentiation 40 (CD40) is expressed on the surface of antigen presenting cells (APCs), such as macrophages, and on some nonhematopoietic cells. In human and murine cells, CD40 interacts with its CD40L ligand, which is expressed on the surface of T cells, leading to T cell production of IFN γ , which is only partially dependent on macrophage production of IL12 (Fig 1). CD40–CD40L interactions lead to autocrine production of Tumor Necrosis Factor (TNF α), which is needed for CD40–CD40L-signaling to induce

autophagy-mediated clearing of *Toxoplasma*-containing PVs by fusion of LC3-decorated PVs with lysosomes (Fig 1) [12]. The importance of CD40–CD40L-mediated *Toxoplasma* destruction in humans is supported by the fact that patients with HyperIgM syndrome—where the communication between T cells and APCs is impaired due to defective CD40L expression—are more susceptible to *Toxoplasma* [13]. Furthermore, CD4 T cells from HIV patients, which are defective in CD40L induction, display impaired cell-mediated immunity against *Toxoplasma* infection [13]. A more dominant role for CD40–CD40L-mediated immunity in humans compared to rodents may explain why IL12/IFN γ pathway-deficient human patients are not more susceptible to *Toxoplasma*, while mice deficient in IL12/IFN γ pathway genes are extremely susceptible to *Toxoplasma* [14]. Indeed, in vitro studies revealed that residual IFN γ -responsiveness in patients with partial IFN γ receptor 1 deficiency in the presence of TNF α is sufficient to inhibit *Toxoplasma* but not *Salmonella* proliferation, possibly explaining why these patients are more susceptible to bacteria but not to *Toxoplasma* [15]. It is therefore likely that in humans, contrary to mice, CD40–CD40L-dependent toxoplasmacidal mechanisms can compensate for the lack of IL12 and IFN γ . CD40(-/-) mice control acute infection but are susceptible to cerebral and ocular toxoplasmosis [13], likely because CD40–CD40L interactions have a role in mediating long-term CD8 T cell immunity and in preventing CD8 T cell exhaustion (reviewed in [16]).

Role of host cell death in clearance of *Toxoplasma* in humans

Host cell death inhibits *Toxoplasma* proliferation, which requires a host cell to replicate and survive (Fig 1). Thus, it is not surprising that *Toxoplasma* strongly inhibits apoptosis, possibly through inhibition of caspases 3/7/8, which are proteolytic proenzymes that can trigger cell death upon activation (reviewed in [17]). However, inhibition of caspase-8 sensitizes cells towards necroptosis, a programmed form of inflammatory cell death, because caspase-8 is an inhibitor of receptor-interacting serine/threonine protein kinase (RIPK3), a key mediator of necroptosis [18]. It is therefore likely that upon IFN γ , TNF α , or TLR3 activation, which can all activate RIPK3, *Toxoplasma*-infected cells can die from necroptosis. HFFs normally support the growth of *Toxoplasma*; however, IFN γ -stimulated HFFs rapidly die through an unknown mechanism upon infection with the type I strain, triggering premature parasite egress [7]. Human cytotoxic T cells can kill *Toxoplasma*-infected target cells by secreting pore-forming perforins into the infected cells and subsequently secreting granzymes through these pores, which can kill the infected cell by activating caspases. Human, but not rodent, T cells also secrete the antimicrobial peptide granulysin through these pores, which can destroy the *Toxoplasma* PVM, allowing granzymes to enter the parasite where they kill the parasite through generation of reactive oxygen species (Fig 1)[19].

Intracellular recognition of pathogens is mediated across many cell types by the family of cytoplasmic pattern recognition receptors (PRRs) called nucleotide-binding oligomerization domain-like receptors (NLRs). Upon activation by pathogen-associated molecular patterns (PAMPS), they form a large protein complex called the inflammasome together with caspase-1. Caspase-1 regulates the maturation of the pro-inflammatory cytokines IL1 β and IL18 and cleaves gasdermin D, which subsequently can form pores in the cell membrane, thereby inducing a form of cell death called pyroptosis. For example, macrophages from Lewis rats are naturally resistant to *Toxoplasma* infection, likely because they undergo rapid NLRP1-mediated pyroptosis upon infection, thereby eliminating its replication niche. In humans, the *NALP1* gene has been associated with susceptibility to congenital toxoplasmosis. Knockdown of *NALP1* in a human monocyte cell line resulted in lower levels of IL1 β , IL18, and IL12, enhanced parasite replication, and subsequent accelerated monocyte cell death. However,

unlike Lewis rat macrophages, no role for NALP1 in pyroptosis was described in humans, and the increased cell death was likely due to increased parasite burden (reviewed in [20]). Whether other *NALP1* alleles induce pyroptosis in human cells upon *Toxoplasma* infection remains to be investigated. Similarly, the *ALOX12* gene, which encodes the enzyme arachidonate 12-lipoxygenase, has allelic variants associated with toxoplasmosis and *ALOX12* knock-down prevents *Toxoplasma* tachyzoites from proliferating likely by increasing host cell death [21].

One final example of cell death-mediated resistance involves purinergic receptors (P2X7R) found on the surface of macrophages, which are activated by extracellular ATP and can be up-regulated synergistically by IFN γ and TNF α (Fig 1). Human polymorphisms in the *P2X7R* gene influence susceptibility to toxoplasmosis and macrophages from people with *P2X7R* loss-of-function alleles have a reduced ability to inhibit *Toxoplasma* growth upon ATP stimulation likely because of a defect in host cell death upon ATP stimulation (reviewed in [22]). Clearly, more studies are required to delineate the role of different human inflammasomes in toxoplasmosis.

Conclusion

Different cell lines from the same species or similar cell types from distinct species can vary enormously in the expression of indoleamine 2,3-dioxygenase [11], inducible nitric oxide synthase, RIPK3 [18], NLRs, and IRGs, likely explaining cell type and species differences in response to *Toxoplasma*. Furthermore, different *Toxoplasma* strains not only vary in their ability to block the variety of toxoplasmacidal mechanisms but they also differ in the activation of host signaling pathways that can lead to differences in expression of host toxoplasmacidal effectors. For example, type II parasites activate the NF κ B transcription factor (predominantly the p50/p65 heterodimer) via the secreted protein GRA15. This eventually leads to enhanced secretion of IL1 β and higher expression of CD40 by human monocytes (reviewed in [17]). Because IL1 β can enhance the IL12-mediated stimulation of IFN γ production [23] and CD40-CD40L interaction can activate *Toxoplasma* destruction through autophagy, it is likely that GRA15 plays a role in human toxoplasmosis. The timing and cellular context for IFN γ -dependent and -independent toxoplasmacidal mechanisms in humans remain unclear and warrant further research.

References

1. Gazzinelli RT, Mendonca-Neto R, Lilue J, Howard J, Sher A. Innate resistance against *Toxoplasma gondii*: an evolutionary tale of mice, cats, and men. *Cell host & microbe*. 2014; 15(2):132–8.
2. Selleck EM, Orchard RC, Lassen KG, Beatty WL, Xavier RJ, Levine B, et al. A Noncanonical Autophagy Pathway Restricts *Toxoplasma gondii* Growth in a Strain-Specific Manner in IFN-gamma-Activated Human Cells. *mBio*. 2015; 6(5):e01157–15. doi: [10.1128/mBio.01157-15](https://doi.org/10.1128/mBio.01157-15) PMID: [26350966](https://pubmed.ncbi.nlm.nih.gov/26350966/)
3. Choi J, Park S, Biering SB, Selleck E, Liu CY, Zhang X, et al. The parasitophorous vacuole membrane of *Toxoplasma gondii* is targeted for disruption by ubiquitin-like conjugation systems of autophagy. *Immunity*. 2014; 40(6):924–35. doi: [10.1016/j.immuni.2014.05.006](https://doi.org/10.1016/j.immuni.2014.05.006) PMID: [24931121](https://pubmed.ncbi.nlm.nih.gov/24931121/)
4. Park S, Choi J, Biering SB, Dominici E, Williams LE, Hwang S. Targeting by Autophagy proteins (TAG): Targeting of IFN γ -inducible GTPases to membranes by the LC3 conjugation system of autophagy. *Autophagy*. 2016; 12(7):1153–67. doi: [10.1080/15548627.2016.1178447](https://doi.org/10.1080/15548627.2016.1178447) PMID: [27172324](https://pubmed.ncbi.nlm.nih.gov/27172324/)
5. Singh SB, Ornatowski W, Vergne I, Naylor J, Delgado M, Roberts E, et al. Human IRGM regulates autophagy and cell-autonomous immunity functions through mitochondria. *Nature cell biology*. 2010; 12(12):1154–65. doi: [10.1038/ncb2119](https://doi.org/10.1038/ncb2119) PMID: [21102437](https://pubmed.ncbi.nlm.nih.gov/21102437/)
6. MacMicking JD. Interferon-inducible effector mechanisms in cell-autonomous immunity. *Nature reviews Immunology*. 2012; 12(5):367–82. doi: [10.1038/nri3210](https://doi.org/10.1038/nri3210) PMID: [22531325](https://pubmed.ncbi.nlm.nih.gov/22531325/)

7. Niedelman W, Sprokholt JK, Clough B, Frickel EM, Saeij JP. Cell Death of Gamma Interferon-Stimulated Human Fibroblasts upon *Toxoplasma gondii* Infection Induces Early Parasite Egress and Limits Parasite Replication. *Infect Immun*. 2013; 81(12):4341–9. doi: [10.1128/IAI.00416-13](https://doi.org/10.1128/IAI.00416-13) PMID: [24042117](https://pubmed.ncbi.nlm.nih.gov/24042117/)
8. Ohshima J, Lee Y, Sasai M, Saitoh T, Su Ma J, Kamiyama N, et al. Role of mouse and human autophagy proteins in IFN-gamma-induced cell-autonomous responses against *Toxoplasma gondii*. *J Immunol*. 2014; 192(7):3328–35. doi: [10.4049/jimmunol.1302822](https://doi.org/10.4049/jimmunol.1302822) PMID: [24563254](https://pubmed.ncbi.nlm.nih.gov/24563254/)
9. Johnston AC, Piro A, Clough B, Siew M, Virreira Winter S, Coers J, et al. Human GBP1 does not localise to pathogen vacuoles but restricts *Toxoplasma gondii*. *Cellular microbiology*. 2016.
10. Clough B, Wright JD, Pereira PM, Hirst EM, Johnston AC, Henriques R, et al. K63-Linked Ubiquitination Targets *Toxoplasma gondii* for Endo-lysosomal Destruction in IFN-gamma-Stimulated Human Cells. *PLoS Pathog*. 2016; 12(11):e1006027. doi: [10.1371/journal.ppat.1006027](https://doi.org/10.1371/journal.ppat.1006027) PMID: [27875583](https://pubmed.ncbi.nlm.nih.gov/27875583/)
11. Hunt NH, Too LK, Khaw LT, Guo J, Hee L, Mitchell AJ, et al. The kynurenine pathway and parasitic infections that affect CNS function. *Neuropharmacology*. 2016.
12. Liu E, Lopez Corcino Y, Portillo JC, Miao Y, Subauste CS. Identification of Signaling Pathways by Which Cd40 Stimulates Autophagy and Anti-Microbial Activity against *Toxoplasma gondii* in Macrophages. *Infect Immun*. 2016.
13. Subauste CS. Autophagy in Immunity Against *Toxoplasma gondii*. In: Levine B, Yoshimori T, Deretic V, editors. *Autophagy in Infection and Immunity*. Berlin, Heidelberg: Springer Berlin Heidelberg; 2009. p. 251–65.
14. von Bernuth H, Picard C, Puel A, Casanova JL. Experimental and natural infections in MyD88- and IRAK-4-deficient mice and humans. *European journal of immunology*. 2012; 42(12):3126–35. doi: [10.1002/eji.201242683](https://doi.org/10.1002/eji.201242683) PMID: [23255009](https://pubmed.ncbi.nlm.nih.gov/23255009/)
15. Janssen R, van Wengen A, Verhard E, de Boer T, Zomerdijk T, Ottenhoff THM, et al. Divergent Role for TNF- in IFN-Induced Killing of *Toxoplasma gondii* and Salmonella typhimurium Contributes to Selective Susceptibility of Patients with Partial IFN- Receptor 1 Deficiency. *J Immunol*. 2002; 169(7):3900–7.
16. Bhadra R, Cobb DA, Khan IA. CD40 Signaling to the Rescue: A CD8 Exhaustion Perspective in Chronic Infectious Diseases. *Crit Rev Immunol*. 2013; 33(4):361–78. PMID: [23971530](https://pubmed.ncbi.nlm.nih.gov/23971530/)
17. Blader IJ, Koshy AA. *Toxoplasma gondii* development of its replicative niche: in its host cell and beyond. *Eukaryotic cell*. 2014; 13(8):965–76. doi: [10.1128/EC.00081-14](https://doi.org/10.1128/EC.00081-14) PMID: [24951442](https://pubmed.ncbi.nlm.nih.gov/24951442/)
18. He S, Wang L, Miao L, Wang T, Du F, Zhao L, et al. Receptor interacting protein kinase-3 determines cellular necrotic response to TNF-alpha. *Cell*. 2009; 137(6):1100–11. doi: [10.1016/j.cell.2009.05.021](https://doi.org/10.1016/j.cell.2009.05.021) PMID: [19524512](https://pubmed.ncbi.nlm.nih.gov/19524512/)
19. Dotiwala F, Mulik S, Polidoro RB, Ansara JA, Burleigh BA, Walch M, et al. Killer lymphocytes use granzyme, perforin and granzymes to kill intracellular parasites. *Nature medicine*. 2016; 22(2):210–6. doi: [10.1038/nm.4023](https://doi.org/10.1038/nm.4023) PMID: [26752517](https://pubmed.ncbi.nlm.nih.gov/26752517/)
20. Sharma D, Kanneganti TD. The cell biology of inflammasomes: Mechanisms of inflammasome activation and regulation. *The Journal of cell biology*. 2016; 213(6):617–29. doi: [10.1083/jcb.201602089](https://doi.org/10.1083/jcb.201602089) PMID: [27325789](https://pubmed.ncbi.nlm.nih.gov/27325789/)
21. Witola WH, Liu SR, Montpetit A, Welti R, Hypolite M, Roth M, et al. ALOX12 in human toxoplasmosis. *Infect Immun*. 2014; 82(7):2670–9. doi: [10.1128/IAI.01505-13](https://doi.org/10.1128/IAI.01505-13) PMID: [24686056](https://pubmed.ncbi.nlm.nih.gov/24686056/)
22. Wiley JS, Sluyter R, Gu BJ, Stokes L, Fuller SJ. The human P2X7 receptor and its role in innate immunity. *Tissue antigens*. 2011; 78(5):321–32. doi: [10.1111/j.1399-0039.2011.01780.x](https://doi.org/10.1111/j.1399-0039.2011.01780.x) PMID: [21988719](https://pubmed.ncbi.nlm.nih.gov/21988719/)
23. Hunter CA, Chizzonite R, Remington JS. IL-1 beta is required for IL-12 to induce production of IFN-gamma by NK cells. A role for IL-1 beta in the T cell-independent mechanism of resistance against intracellular pathogens. *J Immunol*. 1995; 155(9):4347–54.; PMID: [7594594](https://pubmed.ncbi.nlm.nih.gov/7594594/)