

# UC Berkeley

## UC Berkeley Previously Published Works

### Title

Surface uplift and time-dependent seismic hazard due to fluid injection in eastern Texas

### Permalink

<https://escholarship.org/uc/item/56v2m3h6>

### Journal

Science, 353(6306)

### ISSN

0036-8075

### Authors

Shirzaei, Manoochehr  
Ellsworth, William L  
Tiampo, Kristy F  
et al.

### Publication Date

2016-09-23

### DOI

10.1126/science.aag0262

Peer reviewed

# Surface uplift and time-dependent seismic hazard due to fluid injection in eastern Texas

1. **Manoochehr Shirzaei**<sup>1,\*,‡</sup>,
2. **William L. Ellsworth**<sup>2</sup>,
3. **Kristy F. Tiampo**<sup>3,†</sup>,
4. **Pablo J. González**<sup>4,‡</sup>,
5. **Michael Manga**<sup>5</sup>

See all authors and affiliations

DOI: 10.1126/science.aag0262

- [Article](#)
- [Figures & Data](#)
- [Info & Metrics](#)
- [eLetters](#)
- [PDF](#)

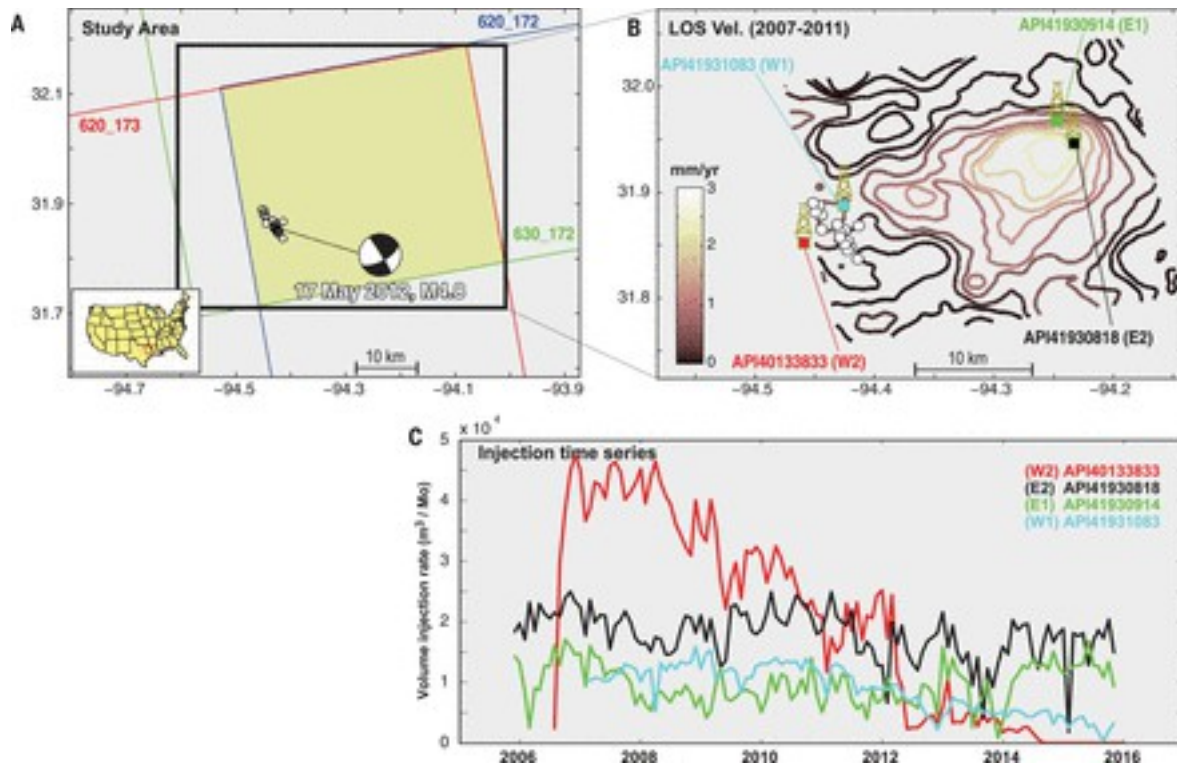
## Abstract

Observations that unequivocally link seismicity and wastewater injection are scarce. Here we show that wastewater injection in eastern Texas causes uplift, detectable in radar interferometric data up to >8 kilometers from the wells. Using measurements of uplift, reported injection data, and a poroelastic model, we computed the crustal strain and pore pressure. We infer that an increase of >1 megapascal in pore pressure in rocks with low compressibility triggers earthquakes, including the 4.8-moment magnitude event that occurred on 17 May 2012, the largest earthquake recorded in eastern Texas. Seismic activity increased even while injection rates declined, owing to diffusion of pore pressure from earlier periods with higher injection rates. Induced seismicity potential is suppressed where tight confining formations prevent pore pressure from propagating into crystalline basement rocks.

In recent years, the eastern and central United States have experienced a sharp increase in the number of earthquakes, with more than 1570 events with moment magnitudes ( $M_w$ )  $\geq 3$  between 2009 and 2015 ([1-3](#)). Many of these events occurred near injection disposal wells and were preceded by a high rate of fluid injection over a period of months to years, suggesting a link between seismicity and injection operations ([1, 3-8](#)). In general, earthquake hazard is proportional to the seismic rate; thus, the current increase in the

seismic rate implies an elevated hazard in the central and eastern United States (9).

On 17 May 2012, the city of Timpson, Texas, experienced a  $M_w$  4.8 earthquake, the largest recorded event in the region (Fig. 1A). This event was preceded and followed by several earthquakes located on an inferred northwest-southeast-trending basement fault, including three with  $M_w \geq 4.0$  over the following 16 months. Focal depths were shallow, ranging from 1.6 to 5.0 km, with the majority of the strain released between 3.5 and 5 km (5). Four high-volume class II disposal wells are located within  $\sim 10$  km, and two lie directly above the site of the earthquakes (table S1). They dispose coproduced saline formation water from oil and gas production operations in the area by injecting into Lower Cretaceous limestones within the Sabine Uplift of eastern Texas (10). There are other injection wells in the vicinity, but none is closer than 7 km to the four studied wells (table S8 and fig. S8) or is a high-volume injector. The immediate area near the disposal wells and the earthquakes has limited oil and gas production. The four disposal wells began injection between 2005 and 2007 at a net average rate of 890,000  $m^3$ /year until mid-2012, when injection dropped to 720,000  $m^3$ /year (5).



- [Download high-res image](#)
- [Open in new tab](#)
- [Download Powerpoint](#)

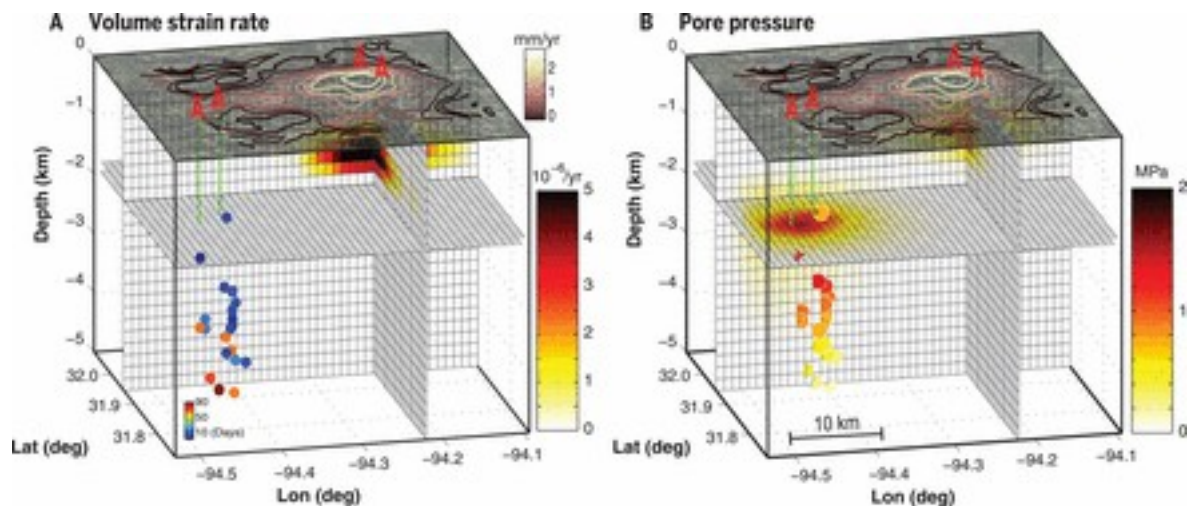
Fig. 1 Study area and data sets.

(A) Three overlapping frames from ALOS in ascending orbit (heading = 350°, incidence = 34.5°). Locations of the seismicity and focal mechanism of the Timpson sequence are shown (white dots). Latitude and longitude are shown on the y and x axes, respectively. (B) Contours of the LOS deformation velocity field obtained from multitemporal processing of the overlapped ALOS SAR data set (yr, year). The west wells (W1 and W2) and the east wells (E1 and E2) are indicated. (C) Time series of the volume of injected fluid for each of the wells shown in (B) (Mo, month).

The proximity of the earthquake clusters to the injection wells suggests a link between them (5, 11). As wastewater is injected into the disposal formation, it increases pore pressure within the connected hydrogeologic system. Over time, the pressure perturbation can spread to distances of many kilometers (12, 13). The increase in pore pressure caused by the injection of fluids decreases the effective normal stress on faults, bringing them closer to failure (14–16), as well as locally changing differential stress within the reservoir and surrounding rocks (17–19). Moreover, increased pore pressure can cause surface deformation (19), measurable using geodetic tools (20), which provides the possibility of documenting subsurface evolution from the surface. Among geodetic tools, interferometric synthetic aperture radar (InSAR) and the Global Positioning System (GPS) have been widely used to monitor surface deformation resulting from natural and anthropogenic processes.

We applied a multitemporal InSAR approach (21) to three overlapping sets of L-band SAR images (tables S2 and S3) acquired by the Advanced Land Observing Satellite (ALOS) over the Timpson area between 6 May 2007 and 14 November 2010 (Fig. 1A). High-quality interferograms were generated from these L-band data (fig. S1). We improved the signal-to-noise ratio of the measurements by estimating the linear velocity from time series obtained by inverting a large number of interferograms (22). Using velocity maps for each individual data set and the combined map (22), we found a line-of-sight (LOS) uplift rate of up to 3 mm/year over the area between the injection wells (Fig. 1B). We estimated that the rate of volume increase under the LOS velocity surface is 800,000 to 1,000,000 m<sup>3</sup>/year, assuming an elastic material with a Poisson's ratio of 0.25 to 0.33 estimated from seismic velocities profiles, which is consistent with the net injected volume rate at the injection wells. To validate ALOS observations and evaluate the current state of ground deformation, we also applied the same processing scheme to eight C-band images acquired by the RADARSAT-2 satellite between 6 March and 21 August 2014 (fig. S2 and tables S4 and S5). Although the location of the zone of maximum deformation is consistent with the velocity map obtained from the L-band data, its spatial extent is broader, with a maximum uplift of ~5 mm over a ~6-month interval.

The two western wells (W1 and W2) inject (**Fig. 1C**) at a depth of 1800 m into Trinity Group formations (fig. S6), which are porous and permeable limestones overlain by the regionally extensive and much less permeable Ferry Lake Anhydrite (**10**). The east wells (E1 and E2) inject (**Fig. 1C**) into carbonate formations of the Washita Group at a depth of 900 m (fig. S6), which is stratigraphically above the Ferry Lake Anhydrite (**10**). We applied an inverse modeling scheme (**23**) to characterize the rate of volume strain. We discretized the volume beneath the half-space into rectangular prisms, 3 by 3 km in area and 0.2 km high, between the surface and a depth of 5 km. We assumed constant volume strain within each prism (**22**). Our optimum strain model accurately reproduced the observed deformation data (fig. S3) and calculated a total volume change of  $700,000 \pm 1600 \text{ m}^3/\text{year}$ , slightly lower than the injection rate. This discrepancy is likely due to diffusion of injected fluids into the surrounding rocks without generating any measurable deformation. We also found a maximum volume strain rate of  $\sim 5 \times 10^{-6} \text{ yr}^{-1}$ , located at a depth of 0.8 to 1.1 km adjacent to wells E1 and E2 (**Fig. 2A**).



- [Download high-res image](#)
- [Open in new tab](#)
- [Download Powerpoint](#)

**Fig. 2** Volumetric strain and pore pressure.

(A) Distribution of the estimated volume strain rate (shaded grid cells). Colored circles show the timing of earthquakes with respect to the first event (day 0). The injection wells are shown by green bars. Contour lines show the surface deformation rate between 6 May 2007 and 14 November 2010. (B) Distribution of the cumulative pore pressure (shaded grid cells) between 2006 and 2013. Colored circles show the pore pressure increase at the location of the earthquakes.

The availability of geological profiles (fig. S6) and the distribution of hydraulic conductivity and Poisson's ratios allowed us to characterize parameters of a

poroelastic layered Earth model (table S6). Using this Earth model and the time series of injected fluid volume, we solved for the evolution of the pore pressure in the crust (22) (Fig. 2B). We identified two zones of maximum pore pressure at depths of  $\sim 0.85$  and  $\sim 1.85$  km near the east and west wells, respectively. The shallower zone of elevated pore pressure coincides with the zone of maximum volume strain. Higher pressures occur around the two west wells, where uplift has been negligible. The contribution from other injection wells to the south (figs. S9 and S10) is small and of second-order importance. The pore pressure associated with wells to the north is unlikely to influence the seismicity because these wells lie on the downthrown block of the Mount Enterprise fault system (10), which probably acts as a barrier to southward migration of the fluids.

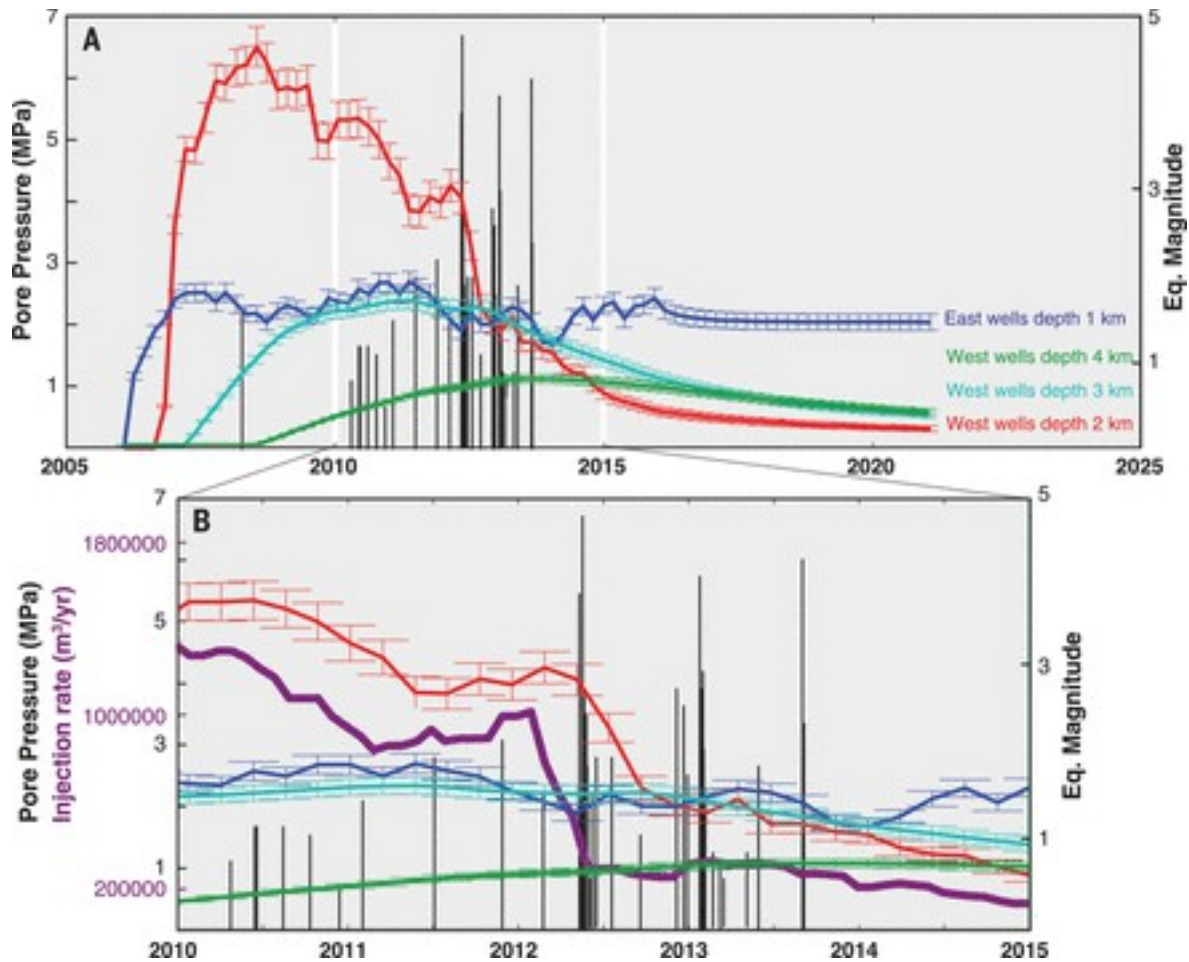
To investigate the relationship between the pore pressure distribution associated with injection and the observed seismicity, we estimated the increase in pore pressure at the location of the 2012 earthquake sequence, in which the main events nucleated between 3.5 and 4.5 km depth (5). Overall, fluid injection caused a pore pressure increase of 0.5 to 1.5 MPa at the hypocentral depth. Pressure changes of this magnitude are known to trigger earthquakes elsewhere (24). In the context of Mohr circle stress analysis, a localized increase in pore pressure shifts the circle to the left (i.e., reduces the effective normal stress) and changes its radius because of poroelastic strain (i.e., increases the differential stress), whereas a spatially uniform pore pressure increase only shifts the circle to the left until it touches the failure envelope (25). Given the historical lack of large earthquakes in the region and the 5-year delay between the initiation of injection and the first large event, we suggest that a decrease in effective normal stress (due to a homogeneous increase in pore pressure) triggered seismicity. The initiating seismicity and associated stress change may have transiently enhanced the permeability (26-29), increasing the pore pressure at the location of the deeper events, which in turn promoted additional earthquakes.

We investigated injection from two pairs of wells that began injecting at about the same time, disposing approximately the same volumes of wastewater. The main differences between them are the depth of injection and the presence of an impermeable barrier below the shallower east wells that blocks fluid and pressure from reaching deeper formations. The deeper west wells are associated with the 2012 Timpson earthquake sequence, whereas no detected seismicity occurred near the east wells. This observation highlights the importance of hydrogeology for the consequences of fluid injection.

The extent to which induced pore pressure change occurs is an important parameter for accurately estimating seismic hazard. From a regulatory perspective, however, constraining this parameter is not trivial, given its

complex relationship with local hydrogeology ([30](#)). Using deformation data, we can put a lower bound on the extent of the rock volume change caused by a pore pressure increase. Measurable uplift more than 8 km from the east wells demonstrates the long reach of pressure perturbations, which has been inferred in other studies ([12](#), [13](#), [15](#)).

Studies of potentially induced earthquakes suggest that the majority of seismicity occurs within basement rocks, even though most of the injection is done in more shallow sedimentary layers ([2-5](#), [7](#), [31](#), [32](#)). Although pore pressure has increased adjacent to both the east and west wells, little surface deformation was detected in the vicinity of the west wells, where the seismicity occurred ([Fig. 2](#)). This is likely due to lower rock compressibility near the west wells compared with near the east wells, a feature we did not account for in solving for the pore pressure evolution, in addition to the greater injection depth. Moreover, injection in the east wells is done in a shallow layer, typically characterized by velocity-strengthening frictional properties ([33](#)); thus, pore pressure changes are less likely to initiate seismic rupture at this location. The uplift signal also has an asymmetric pattern, which we cannot explain with standard models of radial pore pressure diffusion in a homogeneous medium. Our model shows that pore pressure propagates downward below the west wells with a delay and that the period of elevated seismicity between 2010 and 2014 coincides with the period of the maximum pore pressure change of 1 to 2.5 MPa at the average depth of 3 km ([Fig. 3A](#)). Though all events coincide with the period of pore pressure increase in the focal zone, the onset of the main sequence in May 2012 corresponds to pressures of about 1 MPa reaching the focal zone ([Fig. 3B](#)).



- [Download high-res image](#)
- [Open in new tab](#)
- [Download Powerpoint](#)

**Fig. 3** Pore pressure time series.

(A) Colored lines show time series of pore pressure at various depths. The error bars show 1-standard-deviation uncertainties and were obtained through bootstrapping. Vertical black lines show the time and magnitude of earthquakes (Eq.) in the Timpson sequence (table S7). (B) Close-up view of the period 2010–2015 from (A). The time series of the rate of injected fluid at the west wells is superimposed in purple.

The frequency and magnitude of seismic events reached a climax between May 2012 and September 2013, when more than 80% of events occurred, including four  $M_w \geq 4$  earthquakes. This period of elevated seismic activity followed a rapid decline in injection at the west wells (Fig. 3B). Thus, the timing of seismicity may be determined by pore pressure diffusion to the depths of the earthquakes. Additional contributions to the stresses may also promote seismicity, such as from the poroelastic stresses near the well that



accompany the decrease in injection. For an optimally oriented strike-slip fault with the fault-normal direction radial to the injection site, a sudden decline in injection rate relaxes the compressive stress (34). All of the seismic events discussed here occurred on a fault with the fault-normal direction oriented at N60°E, radial to the west injection wells.

Our coupled flow and poroelastic model allows us to predict the future pore pressure distribution after injection ends (Fig. 3A). As injection ends in the west wells by about 2016, the model shows the pressure decreasing approximately exponentially. However, the decay rate is fastest in the most permeable formations and at the depths where injection occurs. At the east wells, 10 years after shut-off, the pore pressure remains close to its maximum level. For the west wells, only 5 years after a hypothesized shut-off, pore pressure drops to less than 10% of its maximum value. This observation has direct implications for future injection operations and seismic hazard estimations. Changes in the seismicity rate are a function of changes in Coulomb stress and background stress (35). Our study shows that the background stress is characterized by a relaxation time that depends on both the injection history and hydrogeological properties. Therefore, injection history at a given site may modify future estimates of the seismic hazard.

Better quantification of the evolution of the stress and pore pressure in the crust is vital to forecasting fault reactivation (9, 36). Despite improvements in seismic monitoring capacity and the resulting decrease in the magnitude detection threshold (37, 38), observations of the in situ pore pressure and stress field remain elusive because of the scarcity of deformation observations and limited integration of those observations with physical models. This work highlights the value of monitoring surface deformation, in particular by using advanced remote sensing techniques, to understand the evolution of pore pressure and stress at depth. The ability to measure crustal stress evolution affords a proactive approach to managing the hazard associated with fluid injection. Observation of the time-dependent stress field permits the construction of temporally variable statistical frameworks (34), which are useful for earthquake operational forecasting (39). The key to successful operational earthquake hazard assessment is being able to continuously update information about the probability of a future earthquake, which can be achieved by using data and models such as those presented in this study. Geodetic monitoring and modeling schemes are valuable components of efforts to mitigate induced seismic hazard.

## **SUPPLEMENTARY MATERIALS**

[www.sciencemag.org/content/353/6306/1416/suppl/DC1](http://www.sciencemag.org/content/353/6306/1416/suppl/DC1)

Materials and Methods

Figs. S1 to S10

Tables S1 to S8

References ([40-57](#))

## REFERENCES AND NOTES

1. [↵](#)

1. J. L. Rubinstein,

2. A. B. Mahani

, Myths and facts on wastewater injection, hydraulic fracturing, enhanced oil recovery, and induced seismicity. *Seismol. Res. Lett.* **86**, 1060–1067 (2015). doi:10.1785/0220150067

ACCESS FULL BY

Library

[UC-eLinks](#)[FREE Full Text](#)[Google Scholar](#)

2. [↵](#)

1. M. Weingarten,

2. S. Ge,

3. J. W. Godt,

4. B. A. Bekins,

5. J. L. Rubinstein

, High-rate injection is associated with the increase in U.S. mid-continent seismicity. *Science* **348**, 1336–1340 (2015).doi:10.1126/science.aab1345pmid:26089509

ACCESS FULL BY

Library

[UC-eLinks](#)[Abstract/FREE Full Text](#)[Google Scholar](#)

3. [↵](#)

1. M. J. Hornbach,

2. H. R. DeShon,

3. W. L. Ellsworth,

4. B. W. Stump,

5. C. Hayward,

6. C. Frohlich,

7. H. R. Oldham,

8. J. E. Olson,
9. M. B. Magnani,
10. C. Brokaw,
11. J. H. Luetgert

, Causal factors for seismicity near Azle, Texas. *Nat. Commun.* **6**, 6728 (2015). doi:10.1038/ncomms7728pmid:25898170

Access provided by



[UC-eLinks](#)[CrossRef](#)[PubMed](#)[Google Scholar](#)

4.

1. K. M. Keranen,
2. H. M. Savage,
3. G. A. Abers,
4. E. S. Cochran

, Potentially induced earthquakes in Oklahoma, USA: Links between wastewater injection and the 2011  $M_w$  5.7 earthquake sequence. *Geology* **41**, 699–702(2013). doi:10.1130/G34045.1

Access provided by



[UC-eLinks](#)[Abstract/FREE Full Text](#)[Google Scholar](#)

5. [↶](#)

1. C. Frohlich,
2. W. Ellsworth,
3. W. A. Brown,
4. M. Brunt,
5. J. Luetgert,
6. T. MacDonald,
7. S. Walter

, The 17 May 2012  $M_{4.8}$  earthquake near Timpson, East Texas: An event possibly triggered by fluid injection. *J. Geophys. Res. Solid Earth* **119**, 581–593 (2014). doi:10.1002/2013JB010755

Access provided by



[UC-eLinks](#)[CrossRef](#)[Google Scholar](#)

6.

1. C. Frohlich,

2. E. Potter,
3. C. Hayward,
4. B. Stump

, Dallas-Fort Worth earthquakes coincident with activity associated with natural gas production. *Leading Edge* **29**, 270-275 (2010). doi:10.1190/1.3353720

UC eLinks



[UC-eLinks](#)[Abstract/FREE Full Text](#)[Google Scholar](#)

7. [←](#)

1. S. Horton

, Disposal of hydrofracking waste fluid by injection into subsurface aquifers triggers earthquake swarm in central Arkansas with potential for damaging earthquake. *Seismol. Res. Lett.* **83**,250-260 (2012). doi:10.1785/gssrl.83.2.250

UC eLinks



[UC-eLinks](#)[FREE Full Text](#)[Google Scholar](#)

8. [←](#)

1. F. R. Walsh 3rd,
2. M. D. Zoback

, Oklahoma's recent earthquakes and saltwater disposal. *Sci. Adv.* **1**,e1500195 (2015). doi:10.1126/sciadv.1500195pmid:26601200

UC eLinks



[UC-eLinks](#)[FREE Full Text](#)[Google Scholar](#)

9. [←](#)

1. W. L. Ellsworth

, Injection-induced earthquakes. *Science* **341**, 1225942 (2013).doi:10.1126/science.1225942pmid:23846903

UC eLinks



[UC-eLinks](#)[Abstract/FREE Full Text](#)[Google Scholar](#)

10. [←](#)

W. H. Granata, *Cretaceous Stratigraphy and Structural Development of the Sabine Uplift Area, Texas and Louisiana* (Shreveport Geological Society, 1963).

11. [↵](#)

1. Z. Fan,
2. P. Eichhubl,
3. J. F. Gale

, Geomechanical analysis of fluid injection and seismic fault slip for the  $M_w$  4.8 Timpson, Texas, earthquake sequence. *J. Geophys. Res. Solid Earth* **121**, 2798–2812 (2016). doi:10.1002/2016JB012821

ACCESS FULL BY



[UC-eLinks](#)[CrossRef](#)[Google Scholar](#)

12. [↵](#)

1. P. A. Hsieh,
2. J. D. Bredehoeft

, A reservoir analysis of the Denver earthquakes: A case of induced seismicity. *J. Geophys. Res.* **86**, 903–920 (1981). doi:10.1029/JB086iB02p00903

ACCESS FULL BY



[UC-eLinks](#)[CrossRef](#)[Web of Science](#)[Google Scholar](#)

13. [↵](#)

1. K. M. Keranen,
2. M. Weingarten,
3. G. A. Abers,
4. B. A. Bekins,
5. S. Ge

, Sharp increase in central Oklahoma seismicity since 2008 induced by massive wastewater injection. *Science* **345**, 448–451 (2014). doi:10.1126/science.1255802pmid:24993347

ACCESS FULL BY



[UC-eLinks](#)[Abstract/FREE Full Text](#)[Google Scholar](#)

14. [↵](#)

1. C. B. Raleigh,
2. J. H. Healy,
3. J. D. Bredehoeft

, An experiment in earthquake control at Rangely, Colorado. *Science* **191**, 1230 (1976).

Access provided by



[UC-eLinks](#)[Abstract/FREE Full Text](#)[Google Scholar](#)

15. [↩](#)

1. Y. Zhang,
2. M. Person,
3. J. Rupp,
4. K. Ellett,
5. M. A. Celia,
6. C. W. Gable,
7. B. Bowen,
8. J. Evans,
9. K. Bandilla,
10. P. Mozley,
11. T. Dewers,
12. T. Elliot

, Hydrogeologic controls on induced seismicity in crystalline basement rocks due to fluid injection into basal reservoirs. *Ground Water* **51**, 525–538 (2013). doi:10.1111/gwat.12071 pmid:23745958

Access provided by



[UC-eLinks](#)[CrossRef](#)[PubMed](#)[Web of Science](#)[Google Scholar](#)

16. [↩](#)

1. Y. Guglielmi,
2. F. Cappa,
3. J.-P. Avouac,
4. P. Henry,
5. D. Elsworth

, Seismicity triggered by fluid injection–induced aseismic slip. *Science* **348**, 1224–1226 (2015). doi:10.1126/science.aab0476 pmid:26068845

Access provided by



[UC-eLinks](#)[Abstract/FREE Full Text](#)[Google Scholar](#)

17. [↩](#)

1. P. Segall  
, Stress and subsidence resulting from subsurface fluid withdrawal in the epicentral region of the 1983 Coalinga Earthquake. *J. Geophys. Res. Solid Earth* **90**, 6801 (1985). doi:10.1029/JB090iB08p06801

Access provided by  
 [UC-eLinks](#)[CrossRef](#)[Google Scholar](#)


18.

1. J. Du,  
2. J. E. Olson  
, A poroelastic reservoir model for predicting subsidence and mapping subsurface pressure fronts. *J. Petrol. Sci. Eng.* **30**, 181-197 (2001). doi:10.1016/S0920-4105(01)00131-0

Access provided by  
 [UC-eLinks](#)[CrossRef](#)[Google Scholar](#)

19. [↵](#)

1. Z. R. Chen  
, Poroelastic model for induced stresses and deformations in hydrocarbon and geothermal reservoirs. *J. Petrol. Sci. Eng.* **80**, 41-52 (2011). doi:10.1016/j.petrol.2011.10.004

Access provided by  
 [UC-eLinks](#)[CrossRef](#)[Web of Science](#)[Google Scholar](#)

20. [↵](#)

1. D. W. Vasco,  
2. A. Rucci,  
3. A. Ferretti,  
4. F. Novali,  
5. R. C. Bissell,  
6. P. S. Ringrose,  
7. A. S. Mathieson,  
8. I. W. Wright  
, Satellite-based measurements of surface deformation reveal fluid flow associated with the geological storage of carbon dioxide. *Geophys. Res. Lett.* **37**, L03303 (2010). doi:10.1029/2009GL041544

Access provided by  
 [UC-eLinks](#)[CrossRef](#)[Google Scholar](#)

21. [↵](#)

1. M. Shirzaei

, A wavelet-based multitemporal DInSAR algorithm for monitoring ground surface motion. *IEEE Geosci. Remote Sens. Lett.* **10**, 456–460 (2013). doi:10.1109/LGRS.2012.2208935

ACCESS FULL BY

Library

[UC-eLinks](#)[CrossRef](#)[Google Scholar](#)

22. [↵](#) Materials and methods are available as supplementary materials on *Science Online*.

23. [↵](#)

1. A. Mossop,

2. P. Segall

, Volume strain within The Geysers geothermal field. *J. Geophys. Res. Solid Earth* **104**, 29113–29131 (1999). doi:10.1029/1999JB900284

ACCESS FULL BY

Library

[UC-eLinks](#)[CrossRef](#)[Google Scholar](#)

24. [↵](#)

E. A. Roeloffs, in *Advances in Geophysics*, R. Dmowska, Ed. (Academic Press, 1996).

[Google Scholar](#)

25. [↵](#)

1. A. Y. Rozhko,

2. Y. Y. Podladchikov,

3. F. Renard

, Failure patterns caused by localized rise in pore-fluid overpressure and effective strength of rocks. *Geophys. Res. Lett.* **34**, L22304 (2007).doi:10.1029/2007GL031696

ACCESS FULL BY

Library

[UC-eLinks](#)[CrossRef](#)[Google Scholar](#)

26. [↵](#)

1. S. Rojstaczer,

2. S. Wolf



, Permeability changes associated with large earthquakes: An example from Loma Prieta. Calif. Geol. **20**, 211 (1992). doi:10.1130/0091-7613(1992)020<0211:PCAWLE>2.3.CO;2

Accessed by



[UC-eLinks](#)[CrossRef](#)[Google Scholar](#)

27.

1. Y. Kitagawa,
2. K. Fujimori,
3. N. Koizumi

, Temporal change in permeability of the rock estimated from repeated water injection experiments near the Nojima fault in Awaji Island, Japan. Geophys. Res. Lett. **29**, 121-1-121-4 (2002). doi:10.1029/2001GL014030

Accessed by



[UC-eLinks](#)[CrossRef](#)[Google Scholar](#)

28.

1. E. A. Roeloffs

, Hydrologic precursors to earthquakes: A review. Pure Appl. Geophys. **126**, 177-209 (1988).doi:10.1007/BF00878996

Accessed by



[UC-eLinks](#)[CrossRef](#)[Web of Science](#)[Google Scholar](#)

29. ↵

1. E. E. Brodsky,
2. E. Roeloffs,
3. D. Woodcock,
4. I. Gall,
5. M. Manga

, A mechanism for sustained groundwater pressure changes induced by distant earthquakes. J. Geophys.

Res. **108**, 2390 (2003).doi:10.1029/2002JB002321

Accessed by



[UC-eLinks](#)[CrossRef](#)[Google Scholar](#)

30. ↵

1. S. A. Shapiro,

2. P. Audigane,
3. J.-J. Royer

, Large-scale in situ permeability tensor of rocks from induced microseismicity. *Geophys. J. Int.* **137**, 207–213 (1999). doi:10.1046/j.1365-246x.1999.00781.x

ACCESS FULL BY



[UC-eLinks](#)[CrossRef](#)[Google Scholar](#)

31. [↩](#)

1. L. Seeber,
2. J. G. Armbruster,
3. W.-Y. Kim

, A fluid-injection-triggered earthquake sequence in Ashtabula, Ohio: Implications for seismogenesis in stable continental regions. *Bull. Seismol. Soc. Am.* **94**, 76–87(2004). doi:10.1785/0120020091

ACCESS FULL BY



[UC-eLinks](#)[Abstract/FREE Full Text](#)[Google Scholar](#)

32. [↩](#)

1. C. Nicholson,
2. E. Roeloffs,
3. R. L. Wesson

, The northeastern Ohio earthquake of 31 January 1986: Was it induced? *Bull. Seismol. Soc. Am.* **78**, 188 (1988).

ACCESS FULL BY



[UC-eLinks](#)[Abstract/FREE Full Text](#)[Google Scholar](#)

33. [↩](#)

C. H. Scholz, *The Mechanics of Earthquakes and Faulting* (Cambridge Univ. Press, ed. 2, 2002).

[Google Scholar](#)

34. [↩](#)

1. P. Segall,
2. S. Lu

, Injection-induced seismicity: Poroelastic and earthquake nucleation effects. *J. Geophys. Res. Solid Earth* **120**, 5082–5103 (2015). doi:10.1002/2015JB012060

35. [↩](#)

1. J. H. Dieterich

, A constitutive law for rate of earthquake production and its application to earthquake clustering. *J. Geophys. Res.* **99**, 2601–2618 (1994). doi:10.1029/93JB02581

36. [↩](#)

1. M. W. McClure,

2. R. N. Horne

, Pressure transient analysis of fracture zone permeability at Soultz-sous-Forêts. *GRC Trans.* **35**, 1487 (2011).

37. [↩](#)

1. N. Deichmann,

2. D. Giardini

, Earthquakes induced by the stimulation of an enhanced geothermal system below Basel (Switzerland). *Seismol. Res. Lett.* **80**, 784–798 (2009). doi:10.1785/gssrl.80.5.784

38. [↩](#)

1. W.-Y. Kim

, Induced seismicity associated with fluid injection into a deep well in Youngstown, Ohio. *J. Geophys. Res. Solid Earth* **118**, 3506–3518 (2013). doi:10.1002/jgrb.50247

39. [↩](#)

1. T. H. Jordan,

2. Y.-T. Chen,
3. P. Gasparini,
4. R. Madariaga,
5. I. Main,
6. W. Marzocchi,
7. G. Papadopoulos,
8. G. Sobolev,
9. K. Yamaoka,
10. J. Zschau

, Operational earthquake forecasting: State of knowledge and guidelines for utilization. *Ann. Geophys.* **54**, 315 (2011).

 [UC-eLinks](#) [Google Scholar](#)

40. [↩](#)

1. M. Shirzaei,
2. R. Bürgmann,
3. M. Shirzaei,
4. R. Bürgmann

, Time-dependent model of creep on the Hayward fault from joint inversion of 18 years of InSAR and surface creep data. *J. Geophys. Res. Solid Earth* **118**, 1733–1746 (2013). doi:10.1002/jgrb.50149

 [UC-eLinks](#) [CrossRef](#) [Google Scholar](#)

41. G. Franceschetti, R. Lanari, *Synthetic Aperture Radar Processing* (CRC Press, 1999).

[Google Scholar](#)

42.

1. M. Shirzaei,
2. R. Bürgmann

, Topography correlated atmospheric delay correction in radar interferometry using wavelet transforms. *Geophys. Res. Lett.* **39**, L01305 (2012). doi:10.1029/2011GL049971

 [UC-eLinks](#) [CrossRef](#) [Google Scholar](#)

43.

1. M. Shirzaei,
2. T. R. Walter

, Estimating the effect of satellite orbital error using wavelet-based robust regression applied to InSAR deformation data. *IEEE Trans. Geosci. Rem. Sens.* **49**, 4600–4605 (2011). doi:10.1109/TGRS.2011.2143419





[UC-eLinks](#)[CrossRef](#)[Google Scholar](#)

44.

1. M. Shirzaei

, A seamless multitrack multitemporal InSAR algorithm. *Geochem. Geophys. Geosyst.* **16**, 1656–1669 (2015). doi:10.1002/2015GC005759





[UC-eLinks](#)[CrossRef](#)[Google Scholar](#)

45.

1. M. Shirzaei,
2. T. R. Walter

, Randomly iterated search and statistical competency as powerful inversion tools for deformation source modeling: Application to volcano interferometric synthetic aperture radar data. *J. Geophys. Res. Solid Earth* **114**, B10401 (2009). doi:10.1029/2008JB006071





[UC-eLinks](#)[CrossRef](#)[Google Scholar](#)

46. P. Segall, *Earthquake and Volcano Deformation* (Princeton Univ. Press, 2010).

[Google Scholar](#)

47. R. F. Hanssen, *Radar Interferometry, Data Interpretation and Error Analysis* (Kluwer Academic Publishers, 2001).

[Google Scholar](#)

48.

1. Y. Okada

, Internal deformation due to shear and tensile faults in a half-space. *Bull. Seismol. Soc. Am.* **82**, 1018 (1992).

49.

1. F. Casu,
2. M. Manzo,
3. R. Lanari

, A quantitative assessment of the SBAS algorithm performance for surface deformation retrieval from DInSAR data. *Remote Sens. Environ.* **102**, 195–210 (2006). doi:10.1016/j.rse.2006.01.023

50. E. M. Mikhail, F. E. Ackermann, *Observations and Least Squares* (University Press of America, 1982).

[Google Scholar](#)

51.

1. R. Harris,
2. P. Segall

, Detection of a locked zone at depth on the Parkfield, California segment of the San Andreas fault. *J. Geophys. Res.* **92**, 7945 (1987). doi:10.1029/JB092iB08p07945

52. J. Bear, *Dynamics of Fluids in Porous Media* (Dover Publications, 1988).

[Google Scholar](#)

53.


1. N. I. Christensen

, Poisson's ratio and crustal seismology. *J. Geophys. Res. Solid Earth* **101**, 3139–3156(1996). doi:10.1029/95JB03446

54.

1. J. R. Rice,


2. M. P. Cleary  
, Some basic stress diffusion solutions for fluid-saturated elastic porous media with compressible constituents. *Rev. Geophys. Space Phys.* **14**, 227 (1976). doi:10.1029/RG014i002p00227

 [UC-eLinks](#)[CrossRef](#)[Web of Science](#)[Google Scholar](#)

55.

1. R. J. Wang,  
2. H. J. Kumpel


, Poroelasticity: Efficient modeling of strongly coupled, slow deformation processes in a multilayered half-space. *Geophysics* **68**, 705–717 (2003). doi:10.1190/1.1567241

 [UC-eLinks](#)[Abstract/FREE Full Text](#)[Google Scholar](#)

56.

1. A. M. Freed


, Earthquake triggering by static, dynamic, and postseismic stress transfer. *Annu. Rev. Earth Planet. Sci.* **33**, 335–367 (2005). doi:10.1146/annurev.earth.33.092203.122505

 [UC-eLinks](#)[CrossRef](#)[Web of Science](#)[Google Scholar](#)

57. ↩

1. J. I. Walter,  
2. P. J. Dotray,  
3. C. Frohlich,  
4. J. F. Gale

, Earthquakes in northwest Louisiana and the Texas–Louisiana border possibly induced by energy resource activities within the Haynesville Shale Play. *Seismol. Res. Lett.* **87**, 285–294 (2016). doi:10.1785/0220150193

 [UC-eLinks](#)[Abstract/FREE Full Text](#)[Google Scholar](#)

**Acknowledgments:** RADARSAT-2 images were acquired under SOAR-E (Science and Operational Applications Research–Education) project 5226 of the Canadian Space Agency ([www.asc-csa.gc.ca/eng/](http://www.asc-csa.gc.ca/eng/)). ALOS data were obtained through Alaska Satellite Facilities ([www.asf.alaska.edu/](http://www.asf.alaska.edu/)). M.S.’s

contribution was supported by U.S. Geological Survey grant G13AP00040. K.F.T. was supported by a Discovery Grant from the Natural Sciences and Engineering Research Council of Canada. W.L.E. was supported by the Stanford Center for Induced and Triggered Seismicity. M.M. was supported by U.S. NSF grant EAR-1344424. P.J.G. was supported by the UK Natural Environment Research Council projects COMET and NE/K011006/1. A copy of the interferograms, LOS deformation maps, model results, and codes for InSAR processing, strain inversion, and pore pressure modeling can be obtained through the website of the Radar Remote Sensing and Tectonic Geodesy Lab ([ratlab.asu.edu](http://ratlab.asu.edu)) or by correspondence with M.S.