

UCSF

UC San Francisco Previously Published Works

Title

A Cross-Sectional Analysis of Variation in Charges and Prices across California for Percutaneous Coronary Intervention

Permalink

<https://escholarship.org/uc/item/57c6m8c4>

Journal

PLOS ONE, 9(8)

ISSN

1932-6203

Authors

Hsia, Renee Y
Antwi, Yaa Akosa
Weber, Ellerie
[et al.](#)

Publication Date

2014

DOI

10.1371/journal.pone.0103829

Peer reviewed



A Cross-Sectional Analysis of Variation in Charges and Prices across California for Percutaneous Coronary Intervention

Renee Y. Hsia^{1*}, Yaa Akosa Antwi², Ellerie Weber³, Julia Brownell Nath¹

1 Department of Emergency Medicine, University of California San Francisco, San Francisco, California, United States of America, **2** Department of Economics, Indiana University Purdue University, Indianapolis, Indiana, United States of America, **3** School of Public Health, University of Texas, Houston, Texas, United States of America

Abstract

Background: Though past studies have shown wide variation in aggregate hospital price indices and specific procedures, few have documented or explained such variation for distinct and common episodes of care.

Objectives: We sought to examine the variability in charges for percutaneous coronary intervention (PCI) with a drug-eluting stent and without major complications (MS-DRG-247), and determine whether hospital and market characteristics influenced these charges.

Methods: We conducted a cross-sectional analysis of adults admitted to California hospitals in 2011 for MS-DRG-247 using patient discharge data from the California Office of Statewide Health Planning and Development. We used a two-part linear regression model to first estimate hospital-specific charges adjusted for patient characteristics, and then examine whether the between-hospital variation in those estimated charges was explained by hospital and market characteristics.

Results: Adjusted charges for the average California patient admitted for uncomplicated PCI ranged from \$22,047 to \$165,386 (median: \$88,350) depending on which hospital the patient visited. Hospitals in areas with the highest cost of living, those in rural areas, and those with more Medicare patients had higher charges, while government-owned hospitals charged less. Overall, our model explained 43% of the variation in adjusted charges. Estimated discounted prices paid by private insurers ranged from \$3,421 to \$80,903 (median: \$28,571).

Conclusions: Charges and estimated discounted prices vary widely between hospitals for the average California patient undergoing PCI without major complications, a common and relatively homogeneous episode of care. Though observable hospital characteristics account for some of this variation, the majority remains unexplained.

Citation: Hsia RY, Akosa Antwi Y, Weber E, Brownell Nath J (2014) A Cross-Sectional Analysis of Variation in Charges and Prices across California for Percutaneous Coronary Intervention. PLoS ONE 9(8): e103829. doi:10.1371/journal.pone.0103829

Editor: Salomeh Keyhani, University of California, San Francisco, United States of America

Received: March 6, 2014; **Accepted:** July 7, 2014; **Published:** August 4, 2014

Copyright: © 2014 Hsia et al. This is an open-access article distributed under the terms of the Creative Commons Attribution License, which permits unrestricted use, distribution, and reproduction in any medium, provided the original author and source are credited.

Data Availability: The authors confirm that all data underlying the findings are fully available without restriction. All public OSHPD files are available upon request from: <http://oshpd.ca.gov/HID/Products/PatDischargeData/PublicDataSet/index.html>.

Funding: This work was supported by the National Center for Advancing Translational Sciences, National Institutes of Health, through UCSF-CTSI Grant Number KL2 TR000143 (RYH), the Robert Wood Johnson Foundation Physician Faculty Scholars Program (RYH), and a UCSF Center for Healthcare Value grant. Its contents are solely the responsibility of the authors and do not necessarily represent the official views of any of the funding agencies. The funders had no role in study design, data collection and analysis, decision to publish, or preparation of the manuscript.

Competing Interests: The authors have declared that no competing interests exist.

* Email: renee.hsia@emergency.ucsf.edu

Introduction

Cost opacity for health care services has been proposed as one explanation for continually escalating health care costs. Most commercial markets guarantee customers relatively easy access to accurate information about the cost of services, thus enabling consumption to be tied to value. The health care marketplace, however, does not offer this transparency to patients or payers, a reality that leads to widespread variation in charges and prices [1,2,3,4].

Past research attempting to explain the degree and sources of provider-level charge and price variation has generally focused on aggregate price indexes. [5,6] However, creating indexes requires aggregating wide ranges of diagnoses and procedures. Charges for

specific episodes of care, on the other hand, while not exactly the same should have less patient level variation and therefore more validity when evaluating between-hospital differences in charges and prices. [7] Further, the variation in charge for common episodes of care is of more use from a consumer perspective when deciding which hospital to visit for a specific complaint or procedure.

For instance, percutaneous coronary intervention (PCI) with a drug eluting stent is one of the leading surgical reasons for hospitalization in the United States [8] and one of the top ten contributors to healthcare costs, totaling over \$18 billion in charges and over \$5 billion in estimated costs in 2011. [9] Uncomplicated PCI with a drug eluting stent is a relatively

standard procedure, involving only minor variation between patients. As a result, hospital charges for uncomplicated PCI with a drug-eluting stent (Medical Severity Diagnosis Related Group [MS-DRG] 247) should be fairly uniform in a competitive market, and any observed variation in charges is unlikely to result from different treatment choices. For this reason, uncomplicated PCI is an interesting condition for which to isolate and analyze hospital-level variation in charges and discounted prices.

We therefore conducted a cross-sectional analysis of patients admitted to California hospitals for PCI with a drug eluting stent, without major complications (MS-DRG 247) in 2011. Using a two-part linear regression model, we first predicted charges at each hospital after adjusting for patient characteristics. We then assessed the variation in these adjusted charges for the average California patient at each hospital, and used them as the dependent variable in a second regression, in which we assessed whether hospital and market-level factors could explain some of the between-hospital variation in charges. Finally, we calculated the variation in estimated discounted prices paid by private insurers. We hypothesized that variation in charges for PCI would be small after accounting for hospital and market characteristics, and that numerous institutional covariates would be associated with hospital charges for uncomplicated PCI.

Methods

Data Sources

To capture admissions for uncomplicated PCI, we used the 2011 publicly available Patient Discharge Database from the California Office of Statewide Health Planning and Development (OSHPD). This dataset captures demographic and clinical data as well as reported charges for all admissions to non-federal hospitals in California, excluding those operated by Kaiser Permanente (a large managed care organization in California), which are not required to report charges to OSHPD. In this public dataset, OSHPD masks selective patient information pursuant to the California Health Data and Advisory Council Consolidation Act. Because we used a public data source that was masked for identifiers, our study was exempt from review by the Committee on Human Research at the University of California, San Francisco.

To capture hospital-level factors including each hospital's ownership, teaching status, rural/urban status, and number of licensed beds, we used 2011 hospital financial and utilization files available from OSHPD. [10] We then used the Area Resource Files from the Health Resources and Services Administration to measure each hospital market's uninsured population and poverty rates. [11] Finally, we used the Impact Files from the Centers for Medicare & Medicaid Services (CMS) to capture each hospital's wage index (cost of living) and case-mix index [12].

Sample Selection

We included data on all adult patients (18–64 years old) admitted to a general acute care hospital for MS-DRG 247 – PCI with a drug eluting stent, without major complications. We further limited our sample to privately insured patients, as the discount factor we later use to estimate discounted price only applies to them. In an effort to maintain a homogeneous sample, we excluded patients who died in the hospital and those who did not have a routine discharge home. Patients with invalid charges, charges exceeding the cell size limit, and those receiving charity care were also excluded from the analysis. See Figure 1 for a full description of our exclusions.

Outcomes

Our primary outcome was total hospital charges for an admission for MS-DRG-247. These charges represent the total amount billed by the hospital to the patient or his insurance for the episode of care, excluding physician fees. Charges are calculated using the full, established rates before any adjustments or pre-payments.

As a secondary outcome, we examined estimated discounted prices, which represent the amount hospitals actually receive for the services they provide. We calculated this measure by multiplying the charge by the hospital's average discount rate for all privately insured patients, as done in previous work. [6,13] The average discount rate was calculated from the 2011 OSHPD financial files as follows: $(\text{gross inpatient revenue} + \text{gross outpatient revenue} - \text{contractual adjustments}) / (\text{gross inpatient revenue} + \text{gross outpatient revenue})$ [13].

Patient Level Predictors

In adjusting charges for patient characteristics, we considered patient age (<40, 40–44, 45–49, 50–54, 55–59, and 60–64 years old), gender, Charlson comorbidity scores, Elixhauser comorbidities (hypertension, diabetes without chronic complications, diabetes with chronic complications, peripheral vascular disease, chronic pulmonary disease, hypothyroidism, renal failure, anemia, depression, and obesity), [14] insurance coverage (Knox-Keene/Medi-Cal Organized Health System, other managed care, or traditional private coverage), and length of stay as patient-level predictors of charge. Length of stay is a right-skewed variable, and to control for this, we log-transformed each value ($\text{length of stay} + 1$) [15].

Hospital and Market-Level Predictors

To look at hospital-level influences on charges, we included variables for hospital ownership (for profit, non-profit, government), teaching status, urban or rural location, volume (number of licensed beds), patient payer mix (% Medicare, % Medicaid), wage index (a measure of cost of living), and case-mix severity. We also included two facility-level inpatient quality indicators from the Agency for Healthcare Research and Quality: acute myocardial infarction (AMI) mortality rate, and heart failure mortality rate [16].

We further included the percent of the population in the hospital's county that is uninsured, percent of the county in poverty, and the Herfindahl-Hirschman Index (HHI) of the catchment area as market-level characteristics related to hospital charges. The HHI is widely used as a measure of the level of competition in an industry, and is defined as the sum of squares of the market shares of all hospitals within the market, here defined as all zip codes the hospital draws patients from. [17] It can range from 0 to 10,000 (using whole percentages), and a higher index signifies less competition. We calculated market shares directly from our patient discharge data. We also accounted for hospitals' membership in systems by calculating system-wide HHI because hospital system membership can influence price setting [6].

Statistical Analysis

We used a two-part regression model for our analysis to specifically assess between-hospital variation in charges for uncomplicated PCI. First, we regressed the log of raw hospital charges on the aforementioned patient clinical and demographic characteristics that could affect the level of services provided. Dummy variables for each hospital were included as fixed effects. This model was used to predict the charge per average length of

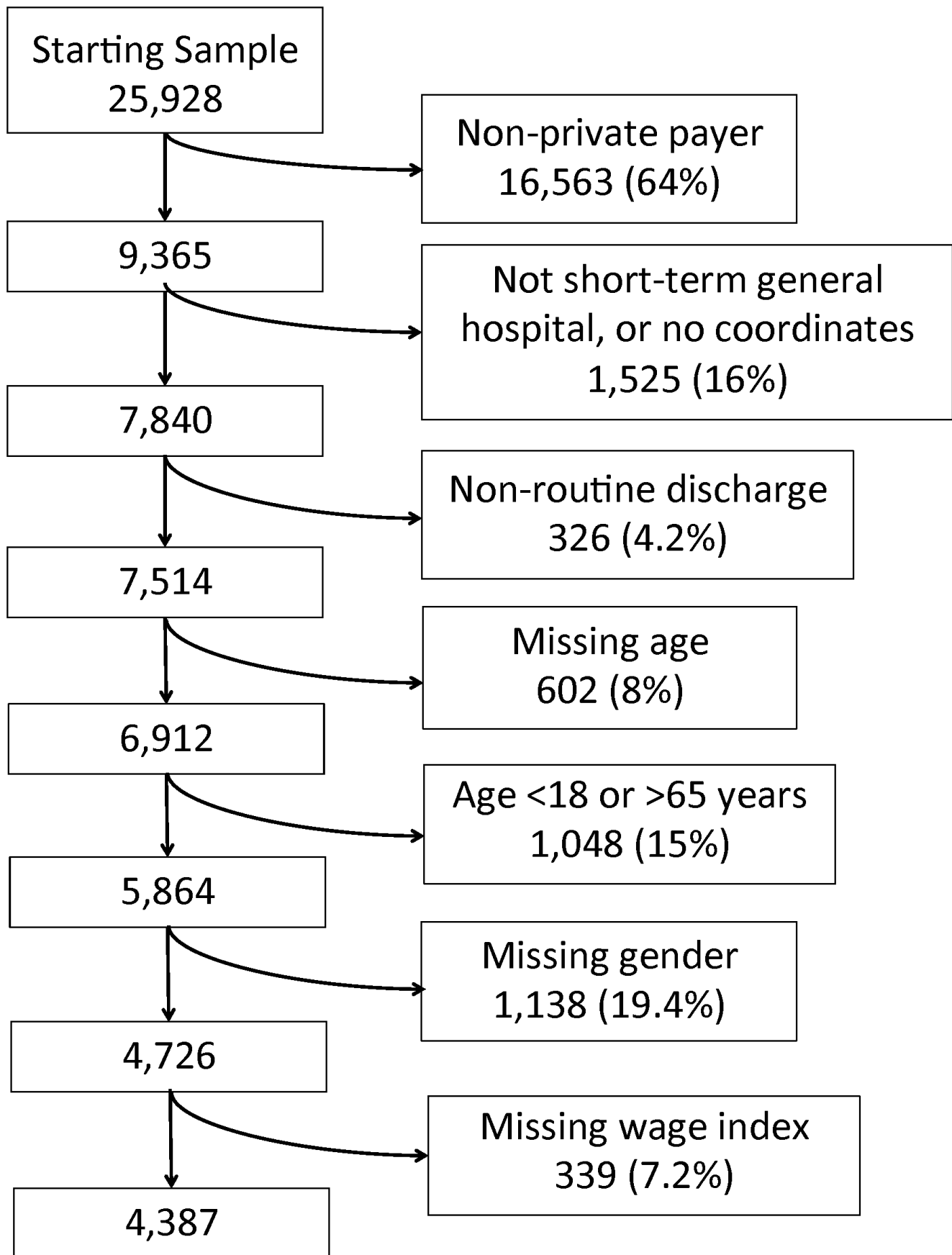


Figure 1. Sample Selection. Flow chart of exclusions from the original starting sample of all adult (≥ 18 years old) patients admitted for MS-DRG-247 leading to the final 4,387 patients studied. Missing variables generally referred to masked items in the public dataset used to protect the identity of patients. "No coordinates" indicates an inability to locate the hospital. doi:10.1371/journal.pone.0103829.g001

stay at each hospital for the average California patient with uncomplicated PCI. We then descriptively analyzed these predicted charges to assess the degree of between-hospital variation in charges for uncomplicated PCI that is not driven by differences in observable patient demographics or comorbidities.

In our second regression, we regressed the log of these predicted charges on the hospital and market characteristics mentioned above. The exponentiated coefficients from this model tell us if and how hospital and market characteristics significantly predict charges, as described in previous literature. [6,13,18] This second regression also tells us what proportion of the variation we observe between hospitals is explained by the observable hospital and market characteristics in the model. All analyses were completed using STATA version 11.0 (College Station, TX).

Results

Our final sample included 4,387 privately insured patients admitted to one of 124 California hospitals for PCI with a drug eluting stent and without major complications (MS-DRG-247) in 2011. The sample was 80% male, and 60% were between the ages of 55 and 64. (Table 1). For 76% of the sample their length of stay was shorter than 3 days, and 50% had a Charlson index of 1, indicating serious but relatively simple admissions. Many patients had comorbidities; 64% had hypertension, and almost 30% had diabetes. Of the 124 hospitals, 71% were not-for-profit, 99% were urban, and 15% were teaching hospitals (Table 2). Market characteristics showed some variability; 60% of hospitals were in

Table 1. Characteristics of patients in the study sample (n = 4,387).

Age categories	N	%
<40 years	86	2.0%
40–44	253	5.8%
45–49	498	11.4%
50–54	917	20.9%
55–59	1,223	27.9%
60–64	1,410	32.1%
Sex		
Male	3,498	79.7%
Female	889	20.3%
Private Insurance Type		
Managed Care-Knox Keene	1,952	44.5%
Managed Care-Other	2,070	47.2%
Traditional Coverage	365	8.3%
Charlson Index		
0	1,031	23.5%
1	2,199	50.1%
2	1,157	26.4%
Length of Stay		
<3 days	3,329	75.9%
3–6 days	1,032	23.5%
>6 days	26	0.6%
Elixhauser Comorbidities		
Hypertension	2,818	64.2%
Diabetes w/o chronic complications	1,152	26.3%
Diabetes w/chronic complications	130	3.0%
Peripheral vascular disease	160	3.7%
Chronic pulmonary disease	313	7.1%
Hypothyroidism	246	5.6%
Renal failure	141	3.2%
Anemia	147	3.4%
Obesity	746	17.0%
Depression	178	4.1%

doi:10.1371/journal.pone.0103829.t001

Table 2. Characteristics of California hospitals in sample (n = 124).

Ownership	N	%	
Government	11	8.9%	
Non-profit	89	71.8%	
For-profit	24	19.4%	
Location			
Urban	123	99.2%	
Rural	1	0.8%	
Teaching Status			
Yes	19	15.3%	
No	105	84.7%	
Wage Index (tertiles)			
	N	Mean	SD
Low	75	1.20	0.007
Medium	8	1.22	0.011
High	41	1.54	0.108
Herfindal-Hirschman Index (tertiles)			
Low	42	1304	476
Medium	43	3212	708
High	39	6475	2144
Casemix (severity – tertiles)			
Low	42	1.52	0.08
Medium	41	1.68	0.04
High	41	1.88	0.16
% Without Insurance	124	18.1%	3.2%
% Below Federal Poverty Line	124	12.5%	3.1%
Licensed Beds	124	372	174
% Medicare	124	40.8%	11.2%
% Medicaid	124	23.3%	13.6%

doi:10.1371/journal.pone.0103829.t002

markets with low cost of living, and 31% were in markets with a low degree of competition.

Looking first at raw charges for an admission for PCI without major complications, we found a median raw charge of \$97,589. These raw charges varied substantially, ranging from \$20,056 to \$195,245. We then adjusted the raw charges for the patient's characteristics to predict adjusted charges for the average patient with a hospital stay for PCI with a drug eluting stent and without major complications at each hospital (see Table S1 for the results of this first regression). Our predicted charges ranged from \$22,047 to \$165,386 (median \$88,350) depending on which hospital the patient visited.

Many hospital and market attributes were significantly correlated with these adjusted charges for PCI in the average patient (Table 3). Our model revealed that government-owned hospitals charged 28% less than not-for-profit hospitals, while rural hospitals charged 36% more than urban hospitals. Hospitals located in areas with the highest cost of living (wage index) had 39% higher adjusted charges than those in areas with the lowest costs of living, and for each one percent increase in the proportion of a hospital's patients covered by Medicare, charges for PCI without major complications increased by 0.7%. Overall, our model explained 43% of the variation in adjusted charges ($R^2 = 0.4308$).

Finally, we used the product of the predicted charges and average estimated discount rates for each hospital to estimate what

price a private insurer would actually pay for PCI without major complications. The calculated discounted prices for the average patient at each hospital ranged from \$3,421 to \$80,903, with a median discounted price of \$28,571 – less than one third of the median adjusted charge. Figure 2 shows the adjusted charges and corresponding discounted prices for each hospital, demonstrating that while the measures are correlated, charge is not a perfect predictor of price.

Discussion

Our findings show that for the average California patient admitted for PCI with a drug eluting stent and without major complications in 2011, charges varied from \$22,047 to \$165,386 depending on the hospital he visited. This range only represents between-hospital variation in charges, as the variation in raw charges stemming from observable patient characteristics was removed in our first-stage regression. We found that hospital and market-level characteristics did help explain some of this between-hospital variation in charges for uncomplicated PCI. For instance, government hospitals charged less than not-for-profit hospitals. Hospitals in markets with high costs of living charged more, as did rural hospitals and hospitals with higher proportions of Medicare patients. These findings are generally aligned with those of previous literature studying broad price indices [6,18].

Table 3. The impact of hospital and market characteristics on adjusted charges.

	% Increase in charges for each unit change in predictor	95% CI lower bound	95% CI upper bound	p-value
HOSPITAL-LEVEL CHARACTERISTICS				
Ownership				
Government	-28.1%	-44.6%	-6.8%	0.013
Non-profit	ref			
For-profit	6.2%	-6.8%	22.1%	0.371
Teaching Status				
Yes	-10.4%	-29.5%	12.7%	0.346
No	ref			
MSA				
Urban	ref			
Rural	36.3%	13.9%	63.2%	0.001
Volume				
No. of licensed beds	0.0%	0.0%	0.0%	0.118
Patient Mix				
% Medicare	0.7%	0.0%	1.4%	0.048
% Medicaid	0.5%	-0.1%	1.1%	0.136
Casemix (severity)				
Medium	13.9%	-0.4%	31.0%	0.057
High	12.7%	-2.1%	28.9%	0.097
Wage Index				
Medium	28.3%	-15.5%	94.8%	0.239
High	38.5%	15.7%	65.7%	0.001
Quality Indicators				
AMI mortality rate (%)	1.5%	-1.7%	4.7%	0.365
Heart failure mortality rate (%)	5.2%	-2.4%	10.9%	0.061
MARKET-LEVEL CHARACTERISTICS				
% Without Health Insurance	-0.1%	-2.4%	2.7%	0.915
% Below Federal Poverty Line	-1.7%	-5.6%	2.3%	0.404
Herfindal-Hirschman Index (System-wide)				
Medium	-2.1%	-20.5%	20.7%	0.842
High	-18.7%	-34.5%	0.9%	0.06

Legend: In this second step of our two-part regression, we regressed hospital and market characteristics on the log of the adjusted average charges per length of stay at each hospital generated from the first regression. The effects displayed here represent the impact the variable in question had on the hospital's charge for the average California patient. They are calculated as the difference between the exponentiated coefficients from the model and one, to show percent change.
doi:10.1371/journal.pone.0103829.t003

However, our model explained only 43% of the variation in charges between hospitals, and relatively few predictors were significant. The large proportion of variation that remained unexplained could be due either to unobservable hospital or market level factors, or to entirely random differences in hospital charge levels.

Past literature indicates that much of the unexplained variation we observe is likely unrelated to cost or hospital and market characteristics. A MedPAC-funded national survey of hospital financial administrators found that many chargemasters, from which DRG charges are aggregated, are based on historical prices that were calculated before costs of any given service could be accurately estimated. [19] When setting and maintaining their chargemasters today, most hospitals surveyed were concerned with meeting regulations and maintaining their overall bottom line, while only one third of hospitals interviewed reported any concern

over costs. [19] This is not surprising, as third party payments from insurers are not based on costs, providing no incentive for hospitals to consider costs when setting their charges. [20,21] Simplistic "updates" that raise all charges by a uniform percentage exacerbate the problem, as they aim to maintain the overall solvency of the hospital and result in differential profitability of services. [19,21,22] These practices prevent a substantial relationship between charges and costs. Without this relationship, which is present in most other competitive industries, there is no basis to limit variation in charges between different hospitals. Our results confirm the presence of unexplainable variation, and thus support the documented absence of systematic charge setting in the chargemaster system.

However inexplicable charges may be, they nevertheless can have a tangible impact on patients and hospitals. Privately insured patients seeking care out of network and the 22% of American

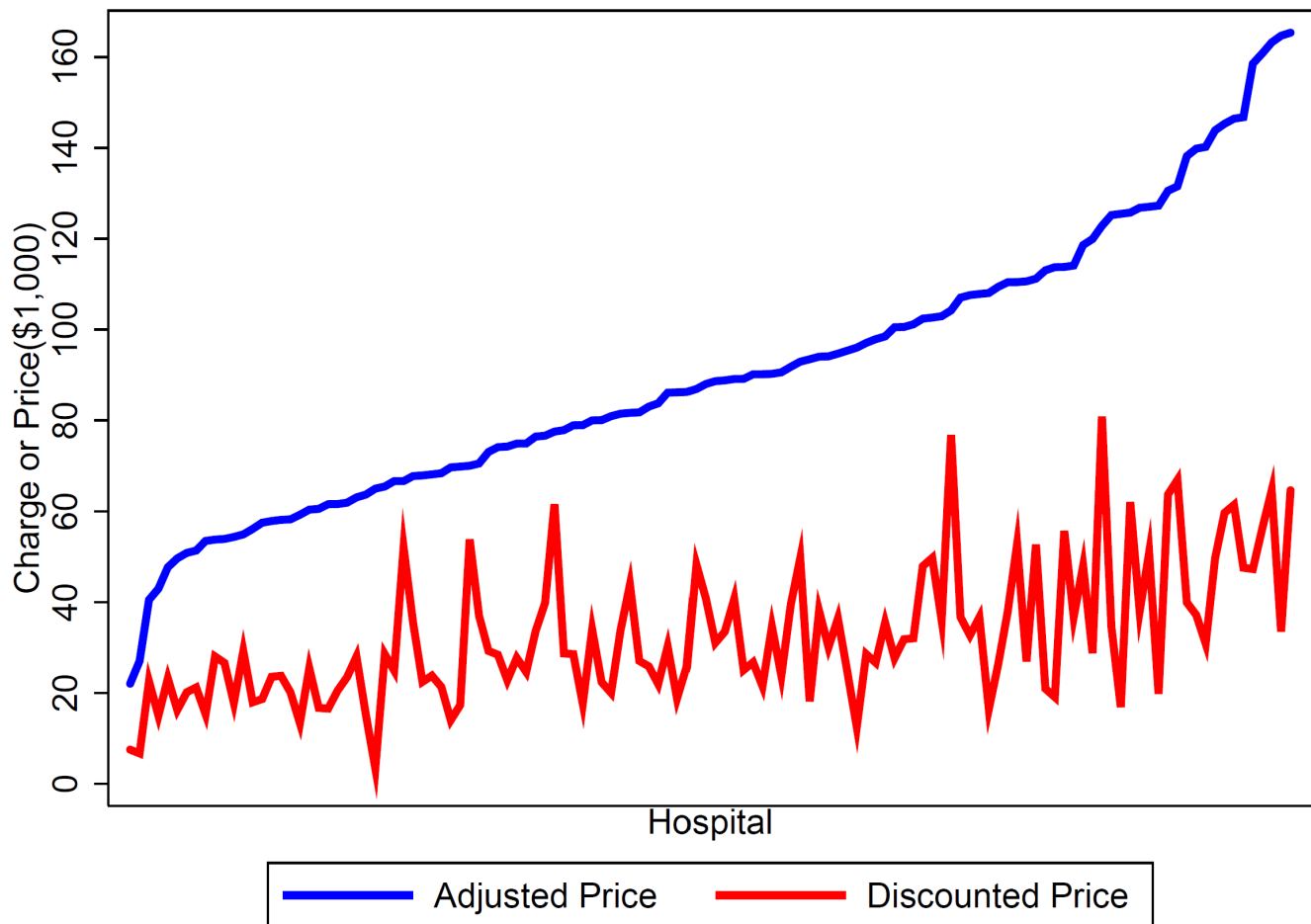


Figure 2. Discounted prices versus adjusted charges, by hospital. Hospitals are placed in order along the x-axis by charge for the average patient admitted for MS-DRG 247 (blue). The corresponding discounted price (estimated paid by a private insurer) is represented in red. doi:10.1371/journal.pone.0103829.g002

adults aged 19–64 who are uninsured may be billed the full charge of their care. [23] Most charges are so high that patients cannot pay them in full, which, without charity care or sliding-scale income adjustment, can result in bad debt. [24,25] In part as a result of this system, 57% of all American bankruptcies are related to medical bills. [26] California’s Fair Pricing Act of 2006 has significantly reduced the hardship of high hospital bills on uninsured patients, and now 97% of California hospitals provide free care to uninsured patients with incomes below 100% of the federal poverty line. [27] The Affordable Care Act attempts to implement similar fair pricing strategies nationwide, but the provision applies only to non-profit hospitals and only specifies the need to provide “financial assistance” for the uninsured, leaving significant room for hospital interpretation and difficult enforcement of meaningful changes [27].

Hospitals use charges regularly in calculating their uncompensated care costs; 18–20% use the difference between charges and payments by private insurers, and 50% use the difference between charges and payments from the uninsured in these calculations. [28] These amounts are then used to determine a hospital’s not-for-profit, and hence tax-exempt status. [29] In addition, Medicare sets their relative DRG weights and identifies qualifying outlier payments using the product of charges and cost center level cost to charge ratios. [30,31,32,33] Finally, many private insurers still base their fee-for-service reimbursements off discounted charges,

and even insurers using prospective payment systems sometimes use charges in benchmarking those payments [21,25].

In our secondary analysis, we found that estimated discounted prices were, on average, approximately one third of the predicted charge. They also showed significant variation across hospitals (range: \$3,421–\$80,903). These discounts reflect the market power of private insurance companies to negotiate discounted prices. [34,35] For reference, CMS estimated that the average cost for MS-DRG 247 was \$13,014 per visit in 2012. [36] For consumers who are billed their full charges, this difference between the discounted price and actual charges has profound financial implications. [37] This form of cost shifting actually penalizes those individual consumers who have the least power in the system and the lowest ability to pay [38].

Limitations

Our results should be interpreted in light of three major limitations. First, because we used a DRG and not line-item services (which were unavailable in our data) to classify an episode of care for PCI with a drug eluting stent and without major complications, it is likely that each patient had slightly different intensity of utilization during their stay. Though we attempted to minimize the impact of this limitation through our first regression (that controlled for observable patient factors correlated with intensity), there were likely unobservable confounding patient

characteristics that could have explained more of the variation in charges at the individual level. However, as we used hospital-level fixed effects in our first model, these differences should not affect our second-step results unless the unobservable patient characteristics are correlated with the hospital characteristics that we included as regressors.

Second, the OSHPD data reports discount rates for privately insured patients on an aggregate, hospital-level basis. However, private payer reimbursements likely vary by insurer, DRG, and department. We therefore recognize that our estimates of discounted final prices are measured with error, and thus we focus our regression analysis on charges, which are reported more precisely in our data. However, past analyses have found that insurers often broadly apply discount rates to wide ranges of services, as the negotiated rates are aimed to maintain institutional solvency. [39] In addition, there is significant precedent for applying ratios to charges at the aggregate level; for example cost-to-charge ratios applied directly to charges are used at an aggregate level by CMS to estimate costs, and have been shown to be imperfect but generally acceptable proxies for actual cost [40].

Finally, it is important to note that our study is limited to California, and though our results provide an interesting case study of charge variation in a large and diverse state, they cannot be generalized to the entire nation.

Conclusions

In 2011, the average California patient with a hospital stay for PCI with a drug eluting stent who did not experience any major complications could be charged between \$22,047 and \$165,386 (median \$88,350) depending on which of 124 hospitals he visited. Discounted prices paid by private insurers were, on average,

References

- Farrell KS, Finocchio LJ, Trivedi AN, Mehrotra A (2010) Does Price Transparency Legislation Allow the Uninsured to Shop for Care? *J Gen Intern Med* 25: 110–114.
- Wilensky GR (2006) Consumer-driven health plans: early evidence and potential impact on hospitals. *Health Aff (Millwood)* 25: 174–185.
- Kyle MK, Ridley DB (2007) Would greater transparency and uniformity of health care prices benefit poor patients? *Health Aff (Millwood)* 26: 1384–1391.
- Government Accountability Office (GAO) (2005) Federal Employees Health Benefits Program: Competition and Other Factors Linked to Wide Variation in Health Care Prices. GAO-05-856. Washington, DC.
- Milliman (2007) Cost Efficiency at Hospital Facilities in California. Milliman Inc.
- Melnick G, Keeler E (2007) The effects of multi-hospital systems on hospital prices. *J Health Econ* 26: 400–413.
- Hsia RY, Kothari AH, Srebotnjak T, Maselli J (2012) Health care as a “market good”? Appendicitis as a case study. *Arch Intern Med* 172: 818–819.
- Vashi AA, Fox JP, Carr BG, D’Onofrio G, Pines JM, et al. (2013) Use of hospital-based acute care among patients recently discharged from the hospital. *JAMA* 309: 364–371.
- Healthcare Cost and Utilization Project (2011) HCUP-net: National and regional estimates on hospital use for all patients from the Nationwide Inpatient Sample (NIS). Rockville, MD.
- California Office of Statewide Health Planning and Development (OSHPD) (2011) Final Hospital Annual Utilization Data.
- Health Resources and Services Administration (2009) Area Resource File. US Department of Health and Human Services.
- Centers for Medicare and Medicaid Services (2011) Historical Impact Files. US Department of Health and Human Services.
- Gaynor M, Vogt WB (2003) Competition among hospitals. *RAND J Econ* 34: 764–785.
- Elixhauser A, Steiner C, Harris DR, Coffey RM (1998) Comorbidity measures for use with administrative data. *Med Care* 36: 8–27.
- Faddy M, Graves N, Pettitt A (2009) Modeling length of stay in hospital and other right skewed data: comparison of phase-type, gamma and log-normal distributions. *Value Health* 12: 309–314.
- Agency for Healthcare Research and Quality (2012) Inpatient Quality Indicators Technical Specifications, Version 4.4. Available: http://www.qualityindicators.ahrq.gov/Modules/IQI_TechSpec.aspx. Accessed 2013 Apr 1.
- US Department of Justice and the Federal Trade Commission (2010) Horizontal Merger Guidelines. Available: <http://www.justice.gov/atr/public/guidelines/hmg-2010.html>. Accessed 2013 April 1.
- Keeler E, Melnick G, Zwanziger J (1999) The changing effects of competition on non-profit and for-profit hospital pricing behavior. *J Health Econ* 18: 69–86.
- Dobson AJ, DaVanzo J, Doherty J, Tanamor M (2005) A Study of Hospital Charge Setting Practices. Lewin Group.
- Ginsburg PB (2010) Wide variation in hospital and physician payment rates evidence of provider market power. Center for Studying Health System Change.
- Ginsburg PB, Grossman JM (2005) When the price isn’t right: how inadvertent payment incentives drive medical care. *Health Aff (Millwood)*: W5.
- Kaplan RS, Porter ME (2011) How to solve the cost crisis in health care. *Harvard Business Review* 89: 46–52.
- DeNavas-Walt C, Proctor B, Smith J (2012) Income, Poverty, and Health Insurance Coverage in the United States: 2011. Current Population Reports. US Census Bureau; Washington, D.C.
- Reinhardt U (2013) What Hospitals Charge the Uninsured. The New York Times. New York, NY. *Economix Blog*. Available: <http://economix.blogs.nytimes.com/2013/03/15/what-hospitals-charge-the-uninsured/>. Accessed 2013 Apr 10.
- Reinhardt UE (2006) The Pricing Of U.S. Hospital Services: Chaos Behind A Veil Of Secrecy. *Health Aff (Millwood)* 25: 57–69.
- Himmelstein DU, Thorne D, Warren E, Woolhandler S (2009) Medical bankruptcy in the United States, 2007: results of a national study. *Am J Med* 122: 741–746.
- Melnick G, Fonkych K (2013) Fair Pricing Law Prompts Most California Hospitals To Adopt Policies To Protect Uninsured Patients From High Charges. *Health Aff (Millwood)* 32: 1101–1108.
- Internal Revenue Service (2006) IRS Exempt Organizations (TE/GE) Hospital Compliance Project Final Report. 98.
- Capps C, David G, Carlton D (2010) Antitrust Treatment of Nonprofits: Should Hospitals Receive Special Care? University of Chicago George J Stigler Center for the Study of the Economy and the State Working Paper.
- Medicare Program. Change in Methodology for Determining Payment for Extraordinarily High-Cost Cases (Cost Outliers) Under the Acute Care Hospital Inpatient and Long-Term Care Hospital Prospective Payment Systems. Final Rule. 68 Federal Register 110. (June 9, 2003). 34494–34504.

approximately one-third of the charges. Hospital ownership, share of patients insured by Medicare, cost of living, and rural location were correlated with charge rates. However, observable hospital and market-level factors explained only 43% of the between-hospital variation in charges. These findings demonstrate the wide and largely unexplained variation in charges and prices for a common and relatively homogeneous episode of care.

Supporting Information

Table S1 The impact of patient characteristics on raw charges. In this first step of our two-part regression model, we regressed multiple patient demographic and clinical characteristics listed above, along with hospital fixed effects, on the log of raw charges. The percent impact of each covariate on charges shown here represent the difference between the exponentiated coefficients from the model and one, to indicate percent change. This regression not only generated the impact of patient characteristics on charges, but also was used to estimate the adjusted charge per average length of stay at each hospital. (DOCX)

Acknowledgments

We especially thank John Landefeld, BA, for his technical and editorial assistance.

Author Contributions

Conceived and designed the experiments: RYH YAA EW JBN. Performed the experiments: YAA EW. Analyzed the data: YAA EW JBN RYH. Contributed reagents/materials/analysis tools: RYH. Wrote the paper: JBN RYH. Editing for the manuscript for intellectually important content: YAA EW.

31. Medicare Program. Changes to the Hospital Inpatient Prospective Payment Systems and Fiscal Year 2007 Rates; Fiscal Year 2007 Occupational Mix Adjustment to Wage Index; Health Care Infrastructure Improvement Program; Selection Criteria of Loan Program for Qualifying Hospitals Engaged in Cancer-Related Health Care and Forgiveness of Indebtedness; Exclusion of Vendor Purchases Made Under the Competitive Acquisition Program (CAP) for Outpatient Drugs and Biologicals Under Part B for the Purpose of Calculating the Average Sales Price (ASP). Final Rules & Interim Final Rule With Comment Period. 71 Federal Register 160. (August 18, 2006). 47870–48351.
32. Medicare Program. Proposed Changes to the Hospital Inpatient Prospective Payment Systems and Fiscal Year 2009 Rates; Proposed Changes to Disclosure of Physician Ownership in Hospitals and Physician Self-Referral Rules; Proposed Collection of Information Regarding Financial Relationships Between Hospitals and Physicians. Proposed Rule. 73 Federal Register 84. (April 30, 2008). 23542–23547.
33. Carter GM, Rogowski JA (1993) The Hospital Relative Value Method as an Alternative for Recalibrating DRG Relative Weights. RAND/UCLA/Harvard Center for Health Care Financing Policy Research.
34. Melnick GA, Zwanziger J, Bamezai A, Pattison R (1992) The effects of market structure and bargaining position on hospital prices. *J Health Econ* 11: 217–233.
35. Capps C, Dranove D (2004) Hospital Consolidation and Negotiated PPO Prices. *Health Aff (Millwood)* 23: 175–181.
36. Medicare Program. Hospital Inpatient Prospective Payment Systems for Acute Care Hospitals and the Long-Term Care Hospital Prospective Payment System and Fiscal Year 2013 Rates; Hospitals' Resident Caps for Graduate Medical Education Payment Purposes; Quality Reporting Requirements for Specific Providers and for Ambulatory Surgical Centers. 77 Federal Register 170. (August 31, 2012).
37. Government Accountability Office (2011) Meaningful Price Information is Difficult for Consumers to Obtain Prior to Receiving Care. GAO-11-791. Washington, DC.
38. Anderson GF (2007) From 'Soak The Rich' To 'Soak The Poor': Recent Trends In Hospital Pricing. *Health Aff (Millwood)* 26: 780–789.
39. Reinhardt U (2009) How Do Hospitals Get Paid? A Primer. *The New York Times*. New York, NY. Economix Blog. Available: <http://economix.blogs.nytimes.com/2009/01/23/how-do-hospitals-get-paid-a-primer/>. Accessed 2013 Apr 10.
40. Shwartz M, Young DW, Siegrist R (1995) The ratio of costs to charges: how good a basis for estimating costs? *Inquiry* 32: 476–481.