

# UC Irvine

## UC Irvine Previously Published Works

### Title

Brominated Luciferins Are Versatile Bioluminescent Probes

### Permalink

<https://escholarship.org/uc/item/5bf0q6hf>

### Journal

ChemBioChem, 18(1)

### ISSN

1439-4227

### Authors

Steinhardt, Rachel C  
Rathbun, Colin M  
Krull, Brandon T  
et al.

### Publication Date

2017-01-03

### DOI

10.1002/cbic.201600564

Peer reviewed



Published in final edited form as:

*Chembiochem*. 2017 January 03; 18(1): 96–100. doi:10.1002/cbic.201600564.

## Brominated luciferins are versatile bioluminescent probes

Dr. Rachel C. Steinhardt<sup>a</sup>, Colin M. Rathbun<sup>a</sup>, Brandon T. Krull<sup>a</sup>, Jason Yu<sup>a</sup>, Yuhang Yang<sup>a</sup>, Brian D. Nguyen<sup>a</sup>, Jake Kwon<sup>a</sup>, Dr. David C. McCutcheon<sup>a</sup>, Krysten A. Jones<sup>b</sup>, Prof. Dr. Philipp Furche<sup>a</sup>, and Prof. Dr. Jennifer A. Prescher<sup>a,b,c</sup>

<sup>a</sup>Department of Chemistry, University of California, Irvine, Irvine, CA (USA)

<sup>b</sup>Department of Molecular Biology and Biochemistry, University of California, Irvine, Irvine CA (USA)

<sup>c</sup>Department of Pharmaceutical Sciences, University of California, Irvine, Irvine CA (USA)

### Abstract

We report a set of brominated luciferins for bioluminescence imaging. These regioisomeric scaffolds were accessed using a common synthetic route. All analogs produced light with firefly luciferase, although varying levels of emission were observed. Differences in photon output were analyzed via computation and photophysical measurements. The “brightest” brominated luciferin was further evaluated in cell and animal models. At low doses, the analog outperformed the native substrate in cells. The remaining luciferins, while weak emitters with firefly luciferase, were inherently capable of light production and thus potential substrates for orthogonal mutant enzymes.

### Graphical Abstract



### Keywords

luciferin; bioluminescence; imaging; Appel's salt; luciferase

Recent years have seen a surge of interest in accessing novel luciferins for bioluminescence imaging (BLI).<sup>[1–5]</sup> BLI relies on light generation via luciferase enzymes and luciferin small molecules.<sup>[6]</sup> These probes are routinely used *in vitro* and *in vivo* for monitoring diverse biological processes.<sup>[7]</sup> However, a limited supply of robust, light-emitting scaffolds has stymied efforts to visualize cellular communication and other multicomponent processes *in vivo*. We and others are attempting to fill this void with new luciferin architectures.<sup>[7,8]</sup> To date, these efforts have focused on analogs of D-luciferin, the native light-emitting substrate for firefly luciferase (Fluc, Figure 1A).<sup>[1,4]6]</sup> Fluc can tolerate a variety of modified substrates, although most are not processed as efficiently as D-luciferin, resulting in reduced

photon production.<sup>[4,5,9]</sup> Improved light outputs have been achieved, in some cases, using mutant luciferases.<sup>[10,11]</sup>

Efforts to develop new bioluminescent tools would benefit from a broad assortment of “bright” luciferins. Historically, such scaffolds have been difficult to access owing to their densely functionalized cores. Late-stage modifications to D-luciferin are also non-trivial, preventing the rapid production of new analogs. To address these issues, we aimed to prepare the bromo-substituted scaffolds (**4′-BrLuc**, **5′-BrLuc**, and **7′-BrLuc**) shown in Figure 1. Bromo groups would impart a modest steric perturbation to the luciferin core, but could serve as versatile chemical handles for downstream cross-coupling reactions and novel probe development.<sup>[12–14]</sup> The luciferins would also likely be tolerated by Fluc or related mutants. We envisioned that the C5′ bromo appendage would “fit” into the active site, as a relatively large enzyme pocket juxtaposes this position (Figure 1B).<sup>[15]</sup> Fluc can also process many 5′-substituted luciferins.<sup>[16–19]</sup> Bromo groups at C4′ and C7′, by contrast, could present a steric barrier to Fluc utilization as these positions lie in close proximity to the enzyme backbone. Such substrates would be excellent candidates for engineered (orthogonal) luciferases, though, provided that they are capable of robust light emission.

Our selection of bromo substituents was predicated on the functional groups not interfering with photon production. To assess this parameter, we employed time-dependent density functional theory<sup>[20]</sup> (TDDFT) to analyze the adiabatic emissions of relevant oxyluciferins from the excited state ( $S_1$ ) to the ground state ( $S_0$ ). The performance of TDDFT for computing the intensities of such emissions is well established: the oscillator strength is proportional to the spontaneous emission rate from  $S_1$  and thus tracks with light output.<sup>[21,22]</sup> When we calculated oscillator strengths for a variety of known luciferins, we found that the values correlated with reported bioluminescent outputs (Table 1). For example, D-luciferin analogs lacking electron-donating groups at the 6′ position (and thus poor emitters) were predicted to have low oscillator strengths.<sup>[23–27]</sup> By contrast, analogs with 6′-amino substituents—and known light emitters—were predicted to have oscillator strengths on par with the native substrate. TDDFT analyses performed on **4′-BrLuc**, **5′-BrLuc**, and **7′-BrLuc** suggested that the bromo substituents would minimally impact bioluminescent output (Table 1).

Encouraged by these results, we set out to synthesize the target brominated luciferins. The desired scaffolds all comprised benzothiazole cores; such structures are readily accessible from anilines and Appel’s salt chemistry (Scheme 1).<sup>[28]</sup> En route to **4′-BrLuc**, the dibrominated aniline **1** was first condensed with Appel’s salt. The resulting dithiazole (**2**) was then fragmented and cyclized to provide cyanobenzothiazole **3** (Scheme 1A). The benzothiazole precursors to **5′-BrLuc** and **7′-BrLuc** were prepared analogously (Schemes 1B–C). In the latter case, the bromine substituent was installed post-cyclization. The desired luciferins **4′-BrLuc**, **5′-BrLuc**, and **7′-BrLuc** were ultimately accessed via D-cysteine condensations with the appropriate cyanobenzothiazoles.

With the analogs in hand, we analyzed their light-emitting properties. The compounds were incubated with recombinant Fluc and bioluminescent photon production was measured. As shown in Figure 2, all analogs produced light in a dose-dependent fashion. Compared to the

native substrate, though, only **5'-BrLuc** exhibited robust levels of emission. As noted earlier, steric clashes may prevent efficient processing of **4'-BrLuc** and **7'-BrLuc** (Table 2). Interestingly, the apparent  $K_m$  for **4'-BrLuc** was on par with that for **D-Luc**, but the relative  $k_{cat}$  was 50-fold reduced. This result indicates that the halogen atom at this position may have room to dock, but might interfere with catalysis. The enzymatic parameters for **5'-BrLuc**, as expected, were similar to those of the native substrate. Bioluminescence spectra for the brominated luciferins were also red-shifted from **D-Luc**, while the fluorescence spectra were virtually identical (Figure S1). These results indicate that the analogs can access alternate excited state geometries and relaxation pathways in the Fluc active site.

While photon measurements suggested that **5'-BrLuc** was the best Fluc substrate, it was possible that the **4'** and **7'** isomers were just inherently weaker emitters (as suggested by TDDFT calculations, Table 1). To explore this possibility, we used a traditional chemiluminescence assay to measure each analog's intrinsic ability to produce light (Figure 3).<sup>[29-31]</sup> This non-enzymatic process mimics the Fluc reaction itself, involving the formation of an activated ester intermediate, followed by oxidation (Figures S2-S3).<sup>[32]</sup> When the brominated analogs were subjected to the assay, light emission was observed at levels above **6'-deoxyLuc** and **6'-methoxyLuc** (known poor light emitters). More specifically, **5'-BrLuc** and **7'-BrLuc** exhibited nearly identical levels of chemiluminescence (Figure 3), while the photon emission value for **4'-BrLuc** was slightly reduced. These results suggest that **C7'**- and **C4'** modified luciferins are capable of bioluminescent light emission, provided that a mutant enzyme can be identified to accommodate them. It should also be noted that deviations between the computed oscillator strengths (Table 1) and the observed emission strengths (Figure 3) suggest the existence of fast, non-radiative deactivation pathways for the analogs. While an exhaustive study of such decay mechanisms is beyond our present scope, additional calculations revealed "dark" states that are energetically accessible from  $S_1$ : (1)  $T_1$  triplet states that can mediate deactivation through intersystem crossing, and (2) twisted intramolecular charge-transfer (TICT) states with near-zero oscillator strengths due to broken pi-conjugation (see SI). In chemiluminescence experiments, these compounds would exhibit emission profiles from a range of torsional angles, only some of which are light emitting.

Our computational and experimental data suggested that **5'-BrLuc** would be suitable for BLI in cells and tissues. Indeed, when the brominated compound was incubated with Fluc-expressing HEK293 cells, robust light emission was observed (Figure 4A). Minimal bioluminescence was produced when cultures were treated with **4'-BrLuc** and **7'-BrLuc**, consistent with *in vitro* data. Interestingly, light emission values from cells incubated with **5'-BrLuc** were on par with those from **D-Luc**-treated cultures (Figure 4). At low doses, **5'-BrLuc** even outperformed the native substrate, suggesting that the analog is more cell permeant.<sup>[[33]</sup> Similar trends were observed *in vivo*. When **5'-BrLuc** was injected into mice bearing Fluc-expressing DB7 cells, light emission was observed (Figure 5A). The overall photon output was lower than that of a comparable dose of D-luciferin (Figure 5B). However, the light emission from mice treated with **5'-BrLuc** was more sustained (Figure 5C).

As noted previously, the brominated luciferins are useful entry points for new probe development, as they can be further modified using traditional cross-coupling reactions. As proof of principle, we used Stille coupling conditions to install a phenyl substituent on the luciferin core (Scheme 2). These conditions can be used at a late stage in luciferin synthesis, and should translate well across the analog series, enabling new families of probes to be readily accessed. We are also exploring other cross-coupling methodologies to derivatize luciferins with alkyl and other appendages, and these results will be published in due course.

In conclusion, we developed a series of brominated luciferins that are versatile probes for bioluminescence. The analogs were synthesized from a common synthetic route, and their light-emitting properties were investigated using a combination of photophysical assays. One of the probes enabled sensitive imaging in cultured cells and animals, while the others are candidates for orthogonal probe development. Importantly, these scaffolds can be further diversified to access next-generation bioluminescent tools.

## Supplementary Material

Refer to Web version on PubMed Central for supplementary material.

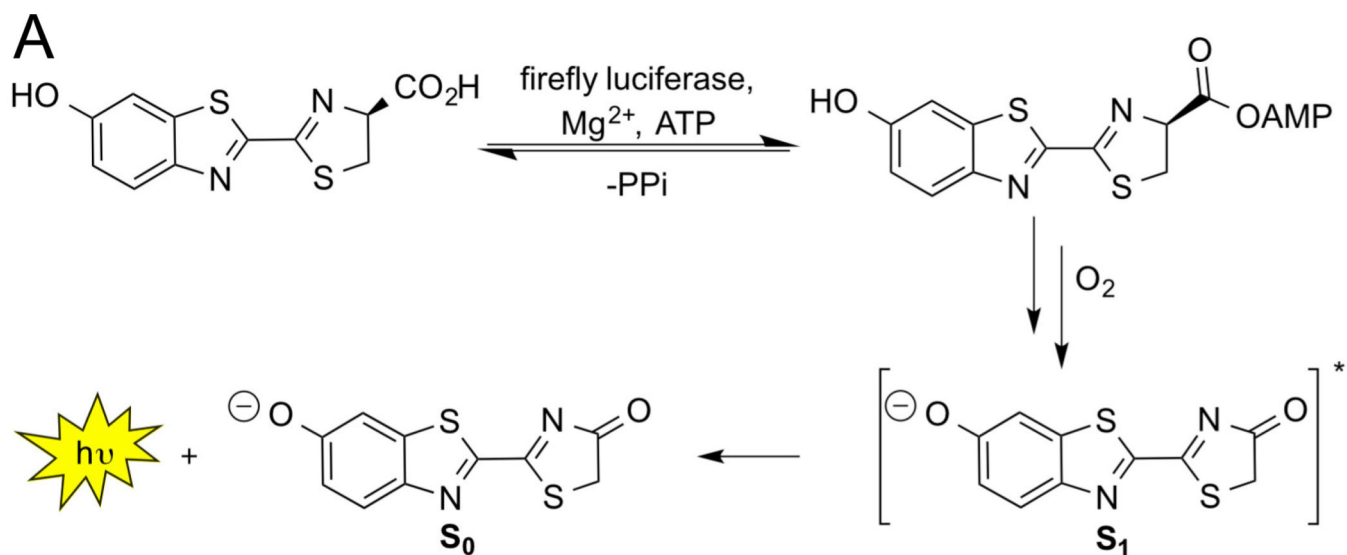
## Acknowledgments

This work was supported by the National Institutes of Health (R01 GM107630 to J.A.P.) and the Department of Energy (DE-SC0008694 to F.F.). C.M.R. was supported by a National Science Foundation Graduate Research Fellowship (DGE-1321846). D.C.M. was supported, in part, by a fellowship from Allergan. We thank members of the Overman, Jarvo, Esser-Kahn and Rychnovsky laboratories for providing reagents and equipment. We also thank Drs. John Greaves and Beniam Berhane for assistance with mass spec analyses. Last, we acknowledge the Laser Spectroscopy Facility at University of California Irvine.

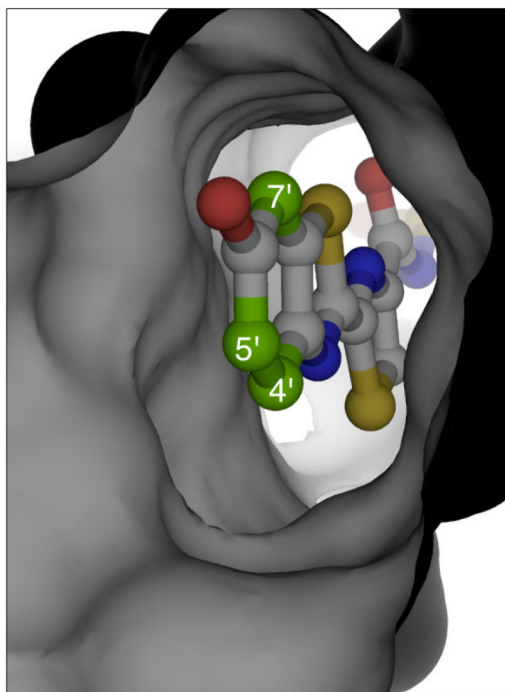
## References

1. McCutcheon DC, Paley MA, Steinhardt RC, Prescher JA. *J. Am. Chem. Soc.* 2012; 134:7604–7607. [PubMed: 22519459]
2. Conley NR, Dragulescu Andrasi A, Rao J, Moerner WE. *Angew. Chem. Int. Ed.* 2012; 51:3350–3353.
3. Kojima R, Takakura H, Ozawa T, Tada Y, Nagano T, Urano Y. *Angew. Chem. Int. Ed.* 2012; 52:1175–1179.
4. Mofford DM, Reddy GR, Miller SC. *J. Am. Chem. Soc.* 2014; 136:13277–13282. [PubMed: 25208457]
5. Jathoul AP, Grounds H, Anderson JC, Pule MA. *Angew. Chem. Int. Ed.* 2014; 53:13059–13063.
6. Fraga H. *Photochem. Photobiol. Sci.* 2008; 7:146–158. [PubMed: 18264582]
7. Paley MA, Prescher JA. *MedChemComm.* 2014; 5:255–267. [PubMed: 27594981]
8. Adams ST, Miller SC. *Curr. Opin. Chem. Biol.* 2014; 21:112–120. [PubMed: 25078002]
9. Kuchimaru T, Iwano S, Kiyama M, Mitsumata S, Kadosono T, Niwa H, Maki S, Kizaka-Kondoh S. *Nat. Commun.* 2016; 7:11856. [PubMed: 27297211]
10. Adams ST, Mofford DM, Reddy GSKK, Miller SC. *Angew. Chem. Int. Ed.* 2016; 55:4943–4946.
11. Harwood KR, Mofford DM, Reddy GR, Miller SC. *Chem. Biol.* 2011; 18:1649–1657. [PubMed: 22195567]
12. Littke AF, Schwarz L, Fu GC. *J. Am. Chem. Soc.* 2002; 124:6343–6348. [PubMed: 12033863]
13. Farina V, Krishnamurthy V, Scott WJ. *The Stille Reaction. Organic Reactions.* 2004; 50:1–652.
14. Nicolaou KC, Bulger PG, Sarlah D. *Angew. Chem. Int. Ed.* 2005; 44:4442–4489.

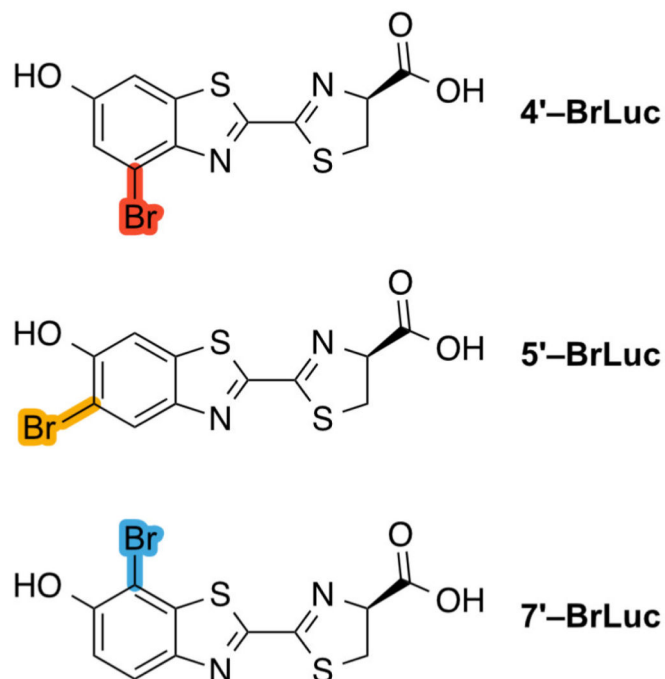
15. Sundlov JA, Fontaine DM, Southworth TL, Branchini BR, Gulick AM. *Biochemistry*. 2012; 51:6493–6495. [PubMed: 22852753]
16. Takakura H, Kojima R, Ozawa T, Nagano T, Urano Y. *ChemBioChem*. 2012; 13:1424–1427. [PubMed: 22678981]
17. Reddy GR, Thompson WC, Miller SC. *J. Am. Chem. Soc.* 2010; 132:13586–13587. [PubMed: 20828122]
18. Cali, JJ., Daily, W., Hawkins, E., Klaubert, D., Liu, J. Luminogenic and Fluorogenic Compounds and Methods to Detect Molecules or Conditions. U.S. Patent. 2006/130551 A8. 2011.
19. Pirrung MC, Biswas G, De Howitt N, Liao J. *Bioorg. Med. Chem. Lett.* 2014; 24:4881–4883. [PubMed: 25239851]
20. Bauernschmitt R, Ahlrichs R. *Chem. Phys. Lett.* 1996; 256:454–464.
21. Rappoport D, Furche F. *J. Am. Chem. Soc.* 2004; 126:1277–1284. [PubMed: 14746501]
22. Aquino AJA, Lischka H, Hättig C. *J. Phys. Chem. A*. 2005; 109:3201–3208. [PubMed: 16833649]
23. Van de Bittner GC, Dubikovskaya EA, Bertozzi CR, Chang CJ. *Proc. Natl. Acad. Sci. USA*. 2010; 107:21316–21321. [PubMed: 21115844]
24. Porterfield WB, Jones KA, McCutcheon DC, Prescher JA. *J. Am. Chem. Soc.* 2015; 137:8656–8659. [PubMed: 26098396]
25. Li J, Chen L, Du L, Li M. *Chem. Soc. Rev.* 2013; 42:662–676. [PubMed: 23099531]
26. White EH, Wörther H, Field GF, McElroy WD. *J. Org. Chem.* 1965; 30:2344–2348.
27. White EH, Wörther H. *J. Org. Chem.* 1966; 31:1484–1488. [PubMed: 5931937]
28. McCutcheon DC, Porterfield WB, Prescher JA. *Org. Biomol. Chem.* 2015; 13:2117–2121. [PubMed: 25525906]
29. White EH, Steinmetz MG, Miano JD, Wildes PD, Morland R. *J. Am. Chem. Soc.* 1980; 102:3199–3208.
30. White EH, Rapaport E, Hopkins TA, Seliger HH. *J. Am. Chem. Soc.* 1969; 91:2178–2180. [PubMed: 5784183]
31. Seliger HH, McElroy WD. *Science*. 1962; 138:683–685. [PubMed: 13992711]
32. Shimomura O, Goto T, Johnson FH. *Proc Natl Acad Sci USA*. 1977; 74:2799–2802. [PubMed: 16592418]
33. Evans MS, Chaurette JP, Adams ST, Reddy GR, Paley MA, Aronin N, Prescher JA, Miller SC. *Nat. Methods*. 2014; 11:393–395. [PubMed: 24509630]



**B**

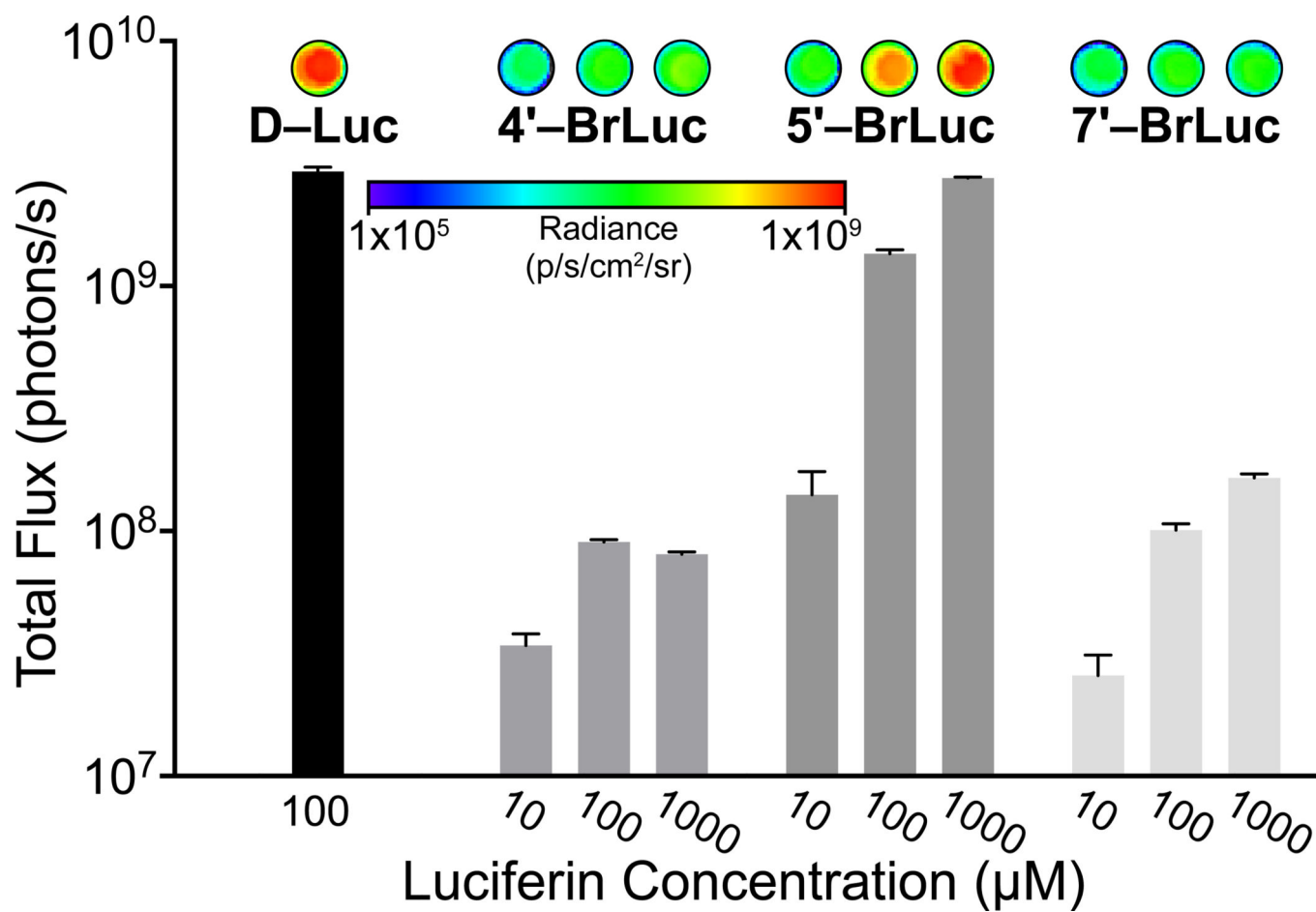


**C**



**Figure 1.**

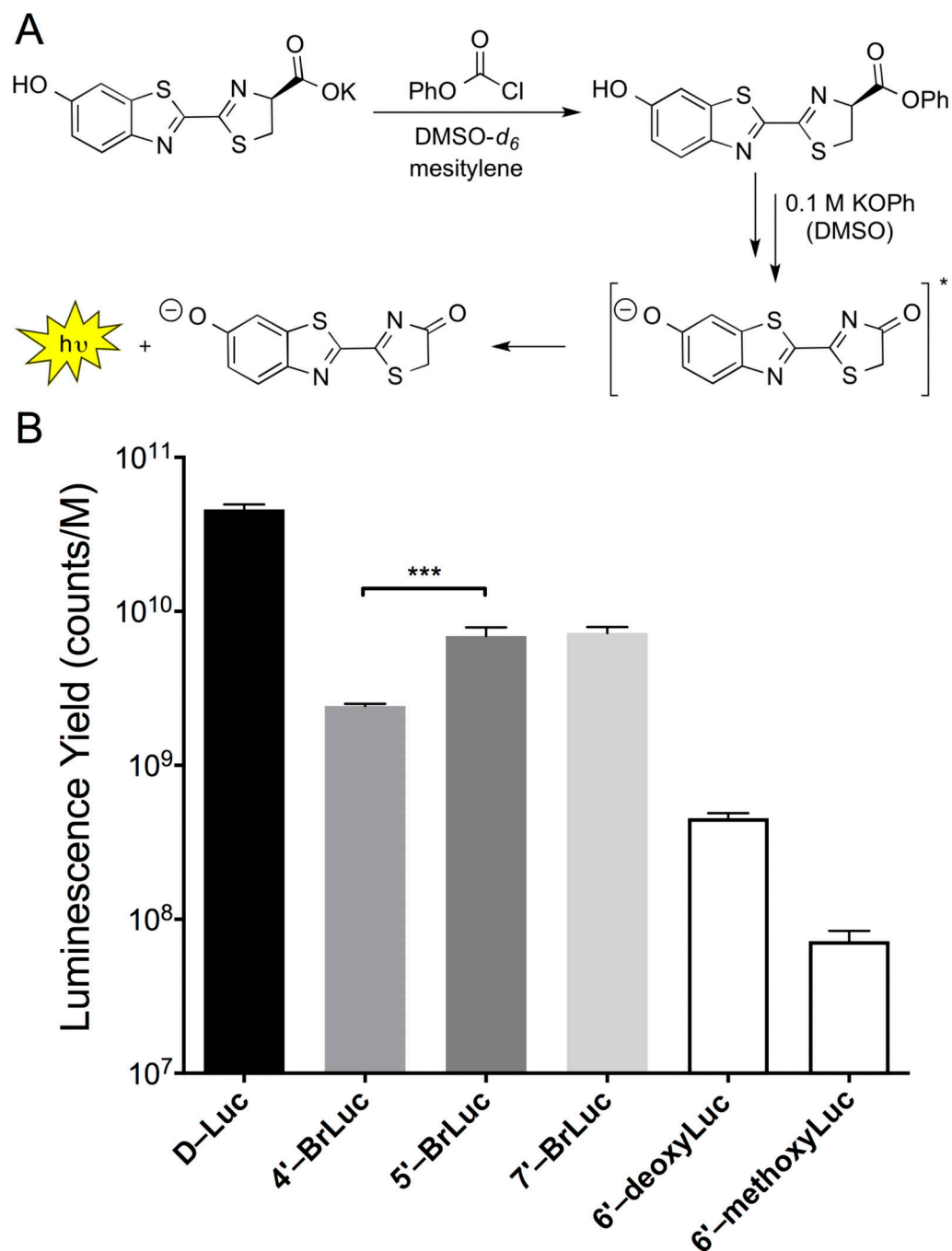
Bioluminescence imaging with luciferases and luciferins. (A) Fluc catalyzes the oxidation of D-luciferin. The reaction proceeds through an excited state (S<sub>1</sub>) oxyluciferin intermediate. Relaxation to the ground state (S<sub>0</sub>) results in photon release. (B) Crystal structure of a luciferin adenylate bound to Fluc (PDB: 4G36). Targeted positions on the luciferin core are highlighted. (C) Brominated analogs investigated in this study.



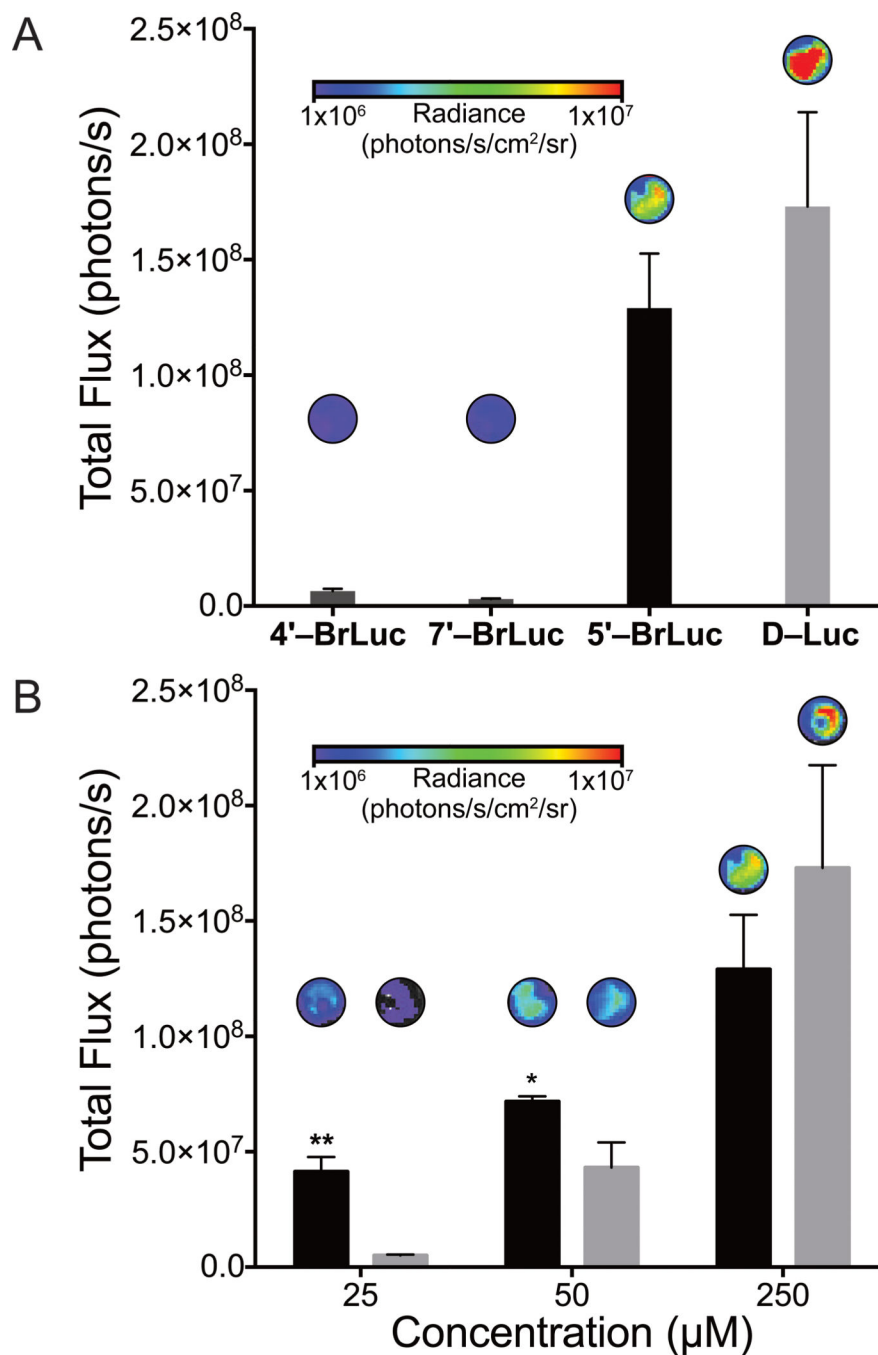
**Figure 2.**

Differential bioluminescent photon production is observed with bromo luciferins and recombinant Fluc. Sample bioluminescence images are shown. Error bars represent the standard deviation of the mean for  $n = 3$  experiments. Signal at  $10^5$  photons/s represents background luminescence.

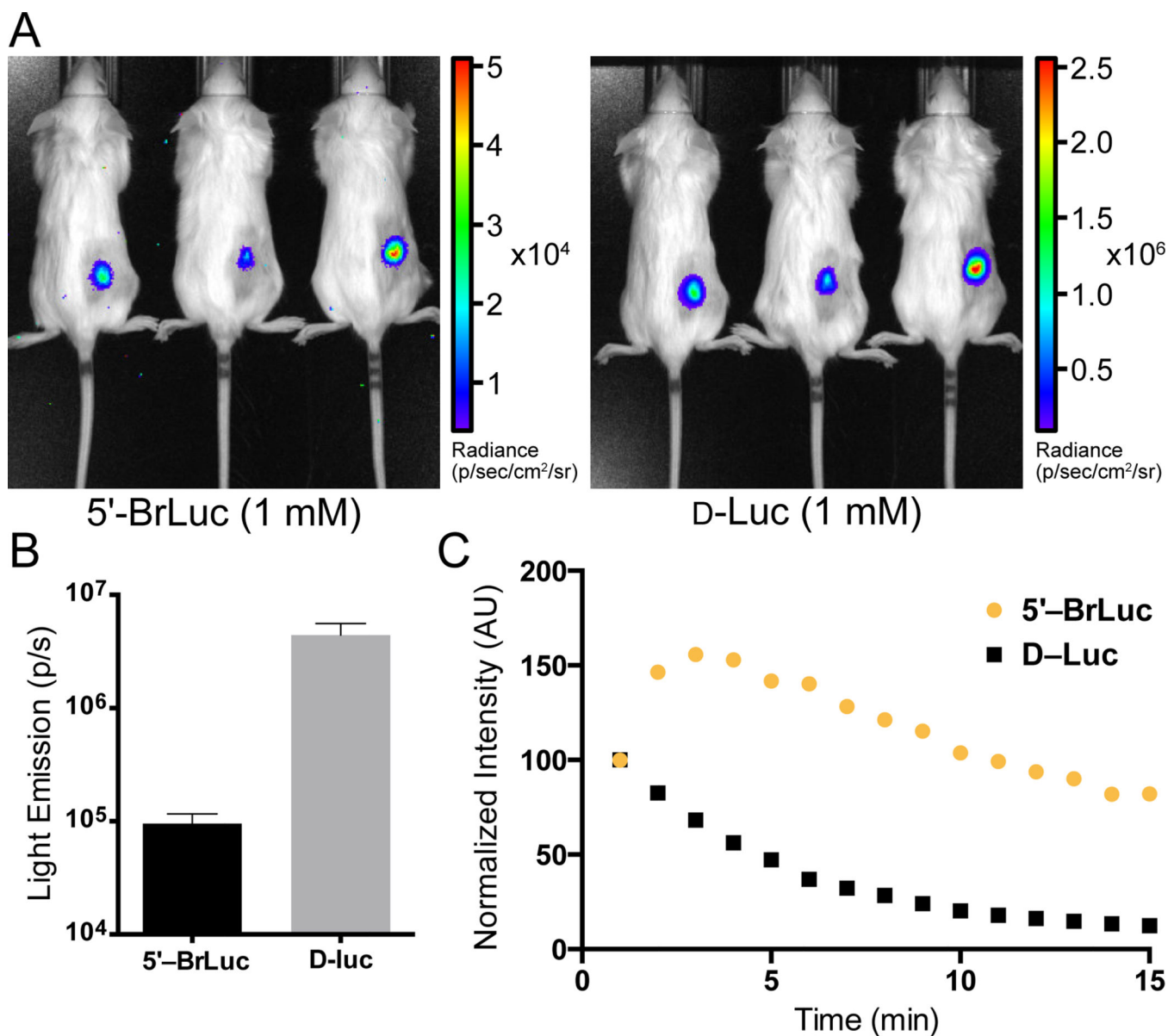




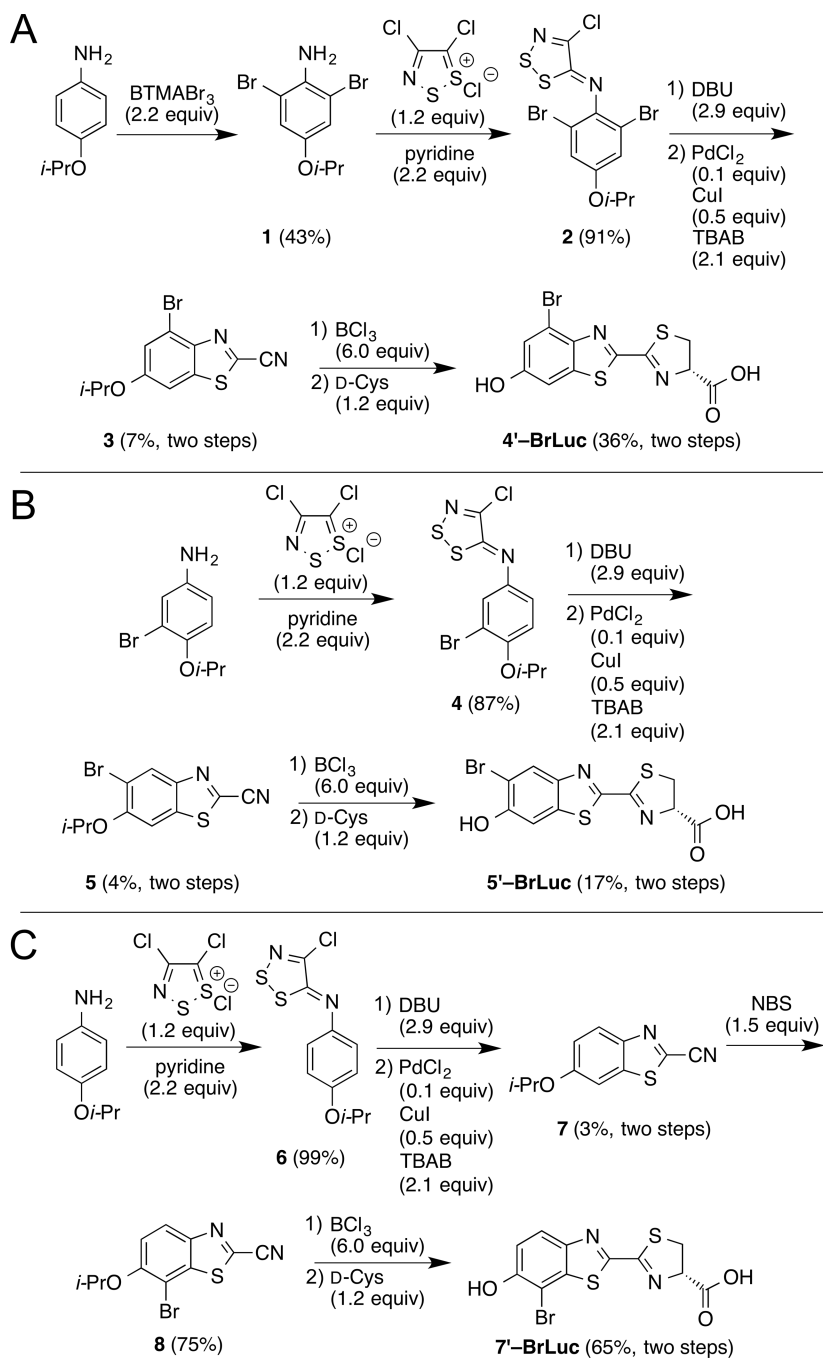
**Figure 3.** Chemiluminescent light production with luciferin analogs. (A) Luciferin scaffolds were activated to form phenyl esters. Subsequent treatment with KOPh resulted in light emission. (B) Chemiluminescence observed with luciferin analogs. \*\*\* $p < 0.001$  (t-test).



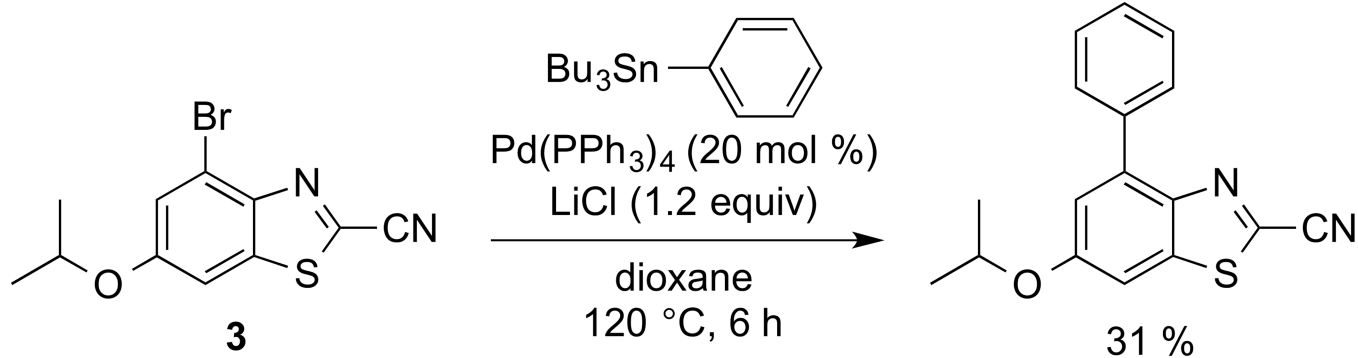
**Figure 4.** Differential photon production observed with Fluc-expressing cells treated with bromo luciferins. Compounds were administered to Fluc-expressing HEK293 cells (100,000 cells per well) in PBS (pH 7.4). Sample images are included above each bar. (A) Peak emission for all analogs at 100 μM. (B) Dose response comparison between 5'-BrLuc (black) and D-Luc (gray). For (A)–(B), error bars represent the standard deviation of the mean for n = 3 experiments. \*p < 0.1, \*\*p < 0.01 (t-test).



**Figure 5.**  
*In vivo* imaging with a bromo luciferin analog. (A) Luciferins (100  $\mu$ L of 1 mM solutions) were administered into mice bearing Fluc-expressing DB7 cells. Bioluminescent images were shown. (B) Quantification of the images shown in (A). Error bars represent the standard error in the mean for  $n = 3$  measurements. (C) Bromo luciferin analog enables sustained imaging. Luciferins (100  $\mu$ L of 1 mM solutions) were administered (i.v.) into a luciferase transgenic mouse and bioluminescence images were acquired over time. Data are representative of  $n = 3$  independent experiments.



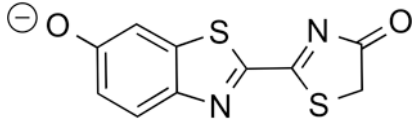
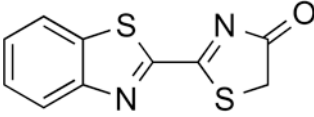
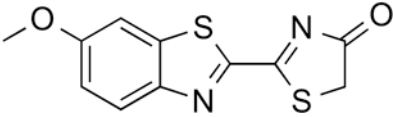
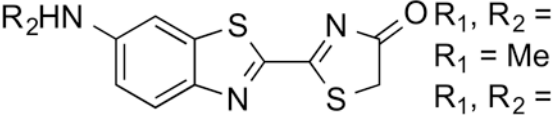
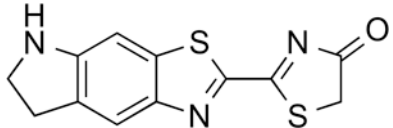
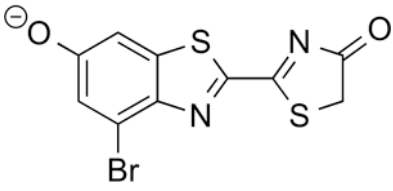
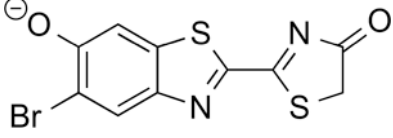
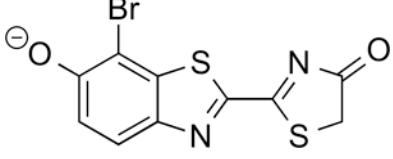
**Scheme 1.**  
Synthesis of brominated luciferin analogs.

**Scheme 2.**

Brominated luciferins can be derivatized by Stille cross-coupling.

Table 1

Comparison of calculated oscillator strengths and bioluminescence emission intensities.

Compound	Name	Oscillator Strength <sup>a</sup>	Rel. BLI <sup>b</sup>
	D-Luc	100	100
	6'-deoxyLuc	1.4	<0.01 <sup>c</sup>
	6'-methoxyLuc	57.2	<0.01
	6'-aminoLuc	91.9	61
	6'-MeNHLH <sub>2</sub>	94.9	101
	6'-Me <sub>2</sub> NLH <sub>2</sub>	102.9	1
	R <sub>1</sub> , R <sub>2</sub> = H		
	R <sub>1</sub> = Me R <sub>2</sub> = H		
	R <sub>1</sub> , R <sub>2</sub> = Me		
	CycLuc1	127.6	38
	4'-BrLuc	86.1	3.1
	5'-BrLuc	104	46.0
	7'-BrLuc	79.3	3.4

<sup>a</sup>Calculated as a theoretical maximum.

<sup>b</sup>Bioluminescence was measured using 100  $\mu$ M luciferin and 1  $\mu$ g Fluc.

<sup>c</sup>No signal observed.

Author Manuscript

Author Manuscript

Author Manuscript

Author Manuscript

**Table 2**

Enzymatic parameters for Fluc-catalyzed light emission.

Compound	Apparent $K_m$ ( $\mu\text{M}$ )	Relative $k_{\text{cat}}$ <sup>a</sup>
<b>D-Luc</b>	3.07 $\pm$ 0.80	100 $\pm$ 0.3
<b>4'-BrLuc</b>	2.47 $\pm$ 0.92	1.8 $\pm$ 0.4
<b>5'-BrLuc</b>	6.72 $\pm$ 0.31	104 $\pm$ 2.2
<b>7'-BrLuc</b>	17.3 $\pm$ 8.8	1.9 $\pm$ 0.4

<sup>a</sup>Expressed as percent relative to **D-Luc**