

UCSF

UC San Francisco Previously Published Works

Title

Five-year pediatric use of a digital wearable fitness device: lessons from a pilot case study.

Permalink

<https://escholarship.org/uc/item/5c503049>

Journal

JAMIA open, 4(3)

ISSN

2574-2531

Authors

Butte, Kimayani D

Bahmani, Amir

Butte, Atul J

et al.

Publication Date

2021-07-01

DOI

10.1093/jamiaopen/ooab054

Copyright Information

This work is made available under the terms of a Creative Commons Attribution License, available at <https://creativecommons.org/licenses/by/4.0/>

Peer reviewed

Research and Applications

Five-year pediatric use of a digital wearable fitness device: lessons from a pilot case study

Kimayani D. Butte ^{1,2} Amir Bahmani,² Atul J. Butte,³ Xiao Li,^{2,4,*} and Michael P. Snyder^{2,*}

¹The Harker School, San Jose, California, USA, ²Department of Genetics, Stanford University School of Medicine, Stanford, California, USA, ³Bakar Computational Health Sciences Institute, University of California, San Francisco, San Francisco, California, USA, and ⁴Department of Biochemistry, School of Medicine, Case Western Reserve University, Cleveland, Ohio, USA

*These senior authors contributed equally.

Corresponding Author: Professor Michael P. Snyder, Department of Genetics, Stanford University School of Medicine, 300 Pasteur Drive, M-344A, Stanford, CA 94305 USA (mpsnyder@stanford.edu)

Received 22 October 2020; Revised 8 March 2021; Editorial Decision 5 April 2021; Accepted 13 July 2021

ABSTRACT

Objectives: Wearable fitness devices are increasingly being used by the general population, with many new applications being proposed for healthy adults as well as for adults with chronic diseases. Fewer, if any, studies of these devices have been conducted in healthy adolescents and teenagers, especially over a long period of time. The goal of this work was to document the successes and challenges involved in 5 years of a wearable fitness device use in a pediatric case study.

Materials and methods: Comparison of 5 years of step counts and minutes asleep from a teenaged girl and her father.

Results: At 60 months, this may be the longest reported pediatric study involving a wearable fitness device, and the first simultaneously involving a parent and a child. We find step counts to be significantly higher for both the adult and teen on school/work days, along with less sleep. The teen walked significantly less towards the end of the 5-year study. Surprisingly, many of the adult's and teen's sleeping and step counts were correlated, possibly due to coordinated behaviors.

Discussion: We end with several recommendations for pediatricians and device manufacturers, including the need for constant adjustments of stride length and calorie counts as teens are growing.

Conclusion: With periodic adjustments for growth, this pilot study shows these devices can be used for more accurate and consistent measurements in adolescents and teenagers over longer periods of time, to potentially promote healthy behaviors.

Key words: wearable fitness devices, Fitbit, adolescent health, quantified self, n-of-1 studies

BACKGROUND AND SIGNIFICANCE

Wearable fitness devices are increasingly being used by the general population. A recent study estimates that 19% of Americans currently use a wearable fitness device¹ and an additional 15% of Americans stated they no longer used a fitness tracker, which raises

a question on their long-term use. Forty million new wearable devices were sold in 2017,² and the company Fitbit sold approximately 13.5 million new Fitbit devices in 2019.³

While many consumers likely use these devices to track general health and wellness parameters, there have been several attempts to

LAY SUMMARY

Wearable fitness devices such as digital pedometers, watches, and rings are increasingly being used by the general population to track sleep and activity to potentially improve their health. The use of these devices in clinical care and research is also growing and is being proposed for large national studies. To date, very few studies have demonstrated significant long-term use of these devices, and even fewer studies have focused on the pediatric population. This study shows the analysis of 5 years of simultaneously collected walking and sleep data in a teenage daughter and her father. To our knowledge, this is the longest reported pediatric study involving a wearable fitness device and the first to simultaneously involve a parent and a child. We discovered several interesting correlations in these data, with the teen in high school walking less than the adult, both walking significantly less on weekends and holidays, correlated step counts on weekends (likely due to common activities), and correlated sleep (if the teen worked late to complete homework, one of the two parents often stayed awake with her). We also list important implications and recommendations for these devices for patients and families, pediatric care providers, schools, and wearable device manufacturers.

discover medical utility for these devices. Gresham et al⁴ recently showed in a study of 37 patients with cancer that wearable fitness devices could accurately capture stair climbing and steps with enough accuracy to correlate with traditional performance status measures assessed by health providers. Similarly, Speier et al⁵ showed that wearable fitness devices could be very useful in monitoring a patient's health remotely in order to diagnose health problems more quickly. The study was conducted for only 90 days with 186 participants with ischemic heart disease. Li et al⁶ demonstrated that fitness trackers can detect illnesses caused by infectious diseases such as Lyme and respiratory viral infections as well as other health conditions. Finally, Rose et al⁷ have used fitness trackers to detect heart conditions, such as atrial fibrillation.

One of the longest studies on the use of wearable fitness devices was by Jakicic et al,⁸ who studied their utility for weight loss in young adults (ages 18–35 years). The study randomized 471 participants, of which 351 were still with the study and provided their updated weights at 24 months. The study showed a significant decrease in weight over time, but surprisingly with less weight loss in the intervention group using the wearable fitness devices. Also interestingly, nearly a quarter of the participants did not complete the study over 2 years.

Despite these setbacks, the research use of wearable fitness devices is forecast to continue to expand, with over 500 biomedical publications specifically mentioning Fitbit. With the flagship NIH *All of Us* Research Program studies now adopting wearable fitness data along with electronic health record data and genomic data, research using these devices is likely to increase.⁹

To date, the vast majority of research on wearable fitness devices has been conducted in adults. Fewer studies have been performed in the pediatric population, though companies are now targeting sales growth of digital wearable devices to this demographic.¹⁰ It is of course important for pediatricians to encourage the start of a healthy lifestyle in their patients, and that includes fitness and exercise. The American Academy of Pediatrics (AAP) recommends that children between the ages 6 and 17 years exercise 60 min every day, while children younger than this should have triple this amount of physical activity.¹¹ Physical activity starting at age 5 is promoted in the AAP Bright Futures guidelines for pediatricians.¹² It is thus an open question whether and how wearable fitness devices can be reliably used in children, so that they may be used to assist pediatricians with this regular assessment and counseling.

The few pediatric studies that have been performed have targeted cohorts with specific diseases. Bian et al¹³ looked at self-reported sleep quality from 22 participants with asthma as well as self-

reported symptoms of asthma and compared the reports to the participants' Fitbit data to show that Fitbit sleep quality is lower when more asthma symptoms occur. Voss et al conducted a study with 40 participants ages 10–18 with congenital heart disease. The study assessed the validity of the Fitbit step count by testing the wrist-worn Fitbit Charge HR against the hip-worn ActiGraph accelerometer and found that the Fitbits recorded more steps than the accelerometer.¹⁴ The study also found that daily Fitbit step counts of over 12 500 steps would meet commonly promoted physical activity guidelines of over 60 min of activity per day. A similar study by Miropolsky et al¹⁵ on 13 young adult cancer survivors between ages 20 and 39 years suggested a Fitbit device could provide major motivation to engage in physical activity.

Studies on healthy adolescents and teenagers have been even more rare. Kerner et al studied 100 participants from two schools using Fitbit devices for 8 weeks, along with the Fitbit app. They found using Fitbits can initially encourage adolescents (ages 13–14) to exercise, but the students were eventually discouraged because Fitbit might have been setting unrealistic goals.¹⁶ The nonpersonalized goal of 10 000 steps per day made participants feel unmotivated and lazy if they did not achieve that goal, which discouraged them from exercising.¹⁶ Also, the competitive aspect of the Fitbit app, such as the leaderboard rankings for who got the most steps, discouraged those who did not get many steps and sometimes demotivated the students who participated in exercise just to get more steps than they usually do. Finally, the authors did not report on the actual success rate of how many students used the Fitbit for the full 8 weeks.

These studies show that using a wearable fitness device could be useful for tracking some health indicators from pediatric-aged individuals, without needing regular physician evaluation. But almost all of these studies involved the participants using devices for 8 weeks or fewer, a period too short for many health indicators to significantly improve. Health benefits from wearable fitness devices might be expected to require longer-term use which could lead to new discoveries in long-term health effects of exercise on medical conditions and general health. Our hypothesis here was that long-term use of a wearable fitness device was possible, even in a pediatric-aged individual and could lead to innovative findings and implications for the health maintenance of the user.

OBJECTIVES

The goal of this work was to document the successes and challenges involved in 5 years of a wearable fitness device use in a pediatric

Table 1. Data collected over 60 months from the teen and adult

	Teen female	Adult male
Starting age	10 years 4 months (end of 4th grade)	43 years 9 months
Available step measurements (days)	1566 (85.8%)	1823 (99.8%)
Missing step measurements (days)	260 (14.2%)	3 (0.16%)
Available sleep measurements (days)	828 (45.3%)	1548 (84.8%)
Missing sleep measurements (days)	998 (54.7%)	278 (25.2%)
Steps per day, mean (standard deviation)	6568.3 (3685.9)	7757.2 (2850.7)
Minutes sleep per night, mean (standard deviation)	482.6 (112.1)	362.5 (85.7)

case study. The findings from this study may have implications for both encouraging healthy behavior in adolescents as well as recommendations for wearable device manufacturers to improve adoption by adolescents and adults.

MATERIALS AND METHODS

Ethics: Two authors (including the lead author) collected their own data as citizen-scientist subjects, with their own devices that they obtained, initiated the analyses, then approached the Stanford investigators to enhance the analyses, and both of these subjects contributed to writing this manuscript. The two data contributors joined Stanford University research protocol 56378 approved by the Stanford University Institutional Review Board, specifically allowing participants at or over age 13 years to share their past and current Fitbit measurement data with Stanford investigators for research purposes, with informed consent.

Two Fitbit One devices were purchased (Amazon.com) on January 1, 2013 and activated shortly thereafter. The Fitbit One was designed to track steps walked along with pace, stairs climbed, sleep duration, and activity. Two participants (and coauthors here) simultaneously started to use the devices to track these measurements. The female participant started use at age 10 years and 4 months and continued through her teenage years. The adult male participant (father of the younger individual) started use at age 43 years and 9 months. Neither had any significant prior medical history at the initiation of use. Both intended the use of these devices for improving and maintaining general health and wellness. The adult also intended to use the device to increase his walking and help in weight loss. While these devices (or their subsequent versions) have still been in use since January 1, 2013, this analysis only covers the 60 months of use after a pattern of regular consistent use was seen, starting on June 1, 2013. In June 2018, both participants elected to study their data together for research.

Fitbit enables the downloading of raw level device data, by registering through their Application Programming Interface (API). Using the API ID number that Fitbit provided, a short program was written in R to access the Fitbit data, serially downloading blocks of daily step and sleep data representing every 100 days, to cover the entire 60 months. More detail is provided in the [Supplementary Methods](#), with a workflow shown in [Supplementary Figure S1](#).

No outlier measurements were removed. Sleep amounts in minutes are assigned to the wake-up day. Weekend nights were defined as those leading into a Saturday or Sunday, which are days with no school. School days were defined as weekdays that were not within a set of five long holiday breaks: 1-week midwinter break in February, 1-week spring break in March or April, 10-week summer

break in June–August, 1-week Thanksgiving break in November, and 2-week winter break between December and January.

Height data for the teen, needed to calculate stride length, was downloaded from her own electronic medical records, with height measurements made and documented by a physician assistant or pediatrician.

Analysis was performed using Google Sheets, Minitab Express, R [version 4.0.2 (2020-06-22)], and RStudio [version 1.3.1073]. R packages used include ggplot2 [version 3.3.2], tidyverse [version 1.3.0], and corr [version 0.4.2].

RESULTS

We wanted to examine the patterns and challenges associated with long-term adolescent use of wearable fitness data. Sixty months of step and sleep data, collected from the Fitbit wearable fitness devices of a father and daughter ([Table 1](#)) were downloaded and analyzed. School for the teen and work for the adult was generally in session from Monday morning through Friday afternoon and the teen's school year consistently ran from late August to early June. For the first year of the study, the teen was required to complete a “mile run” once per year. In the subsequent 3 years in middle school, the teenager was required to complete a “mile run” once every month. In the final year of the study (which was during high school), there were no daily physical education classes, only lower intensity yoga without mandatory walking or running.

The teen was noted to have more missing measurements than the adult, including a 193-day gap in measurements in 2016. However, more than 85% of the possible 1826 days of step counting were available for both individuals. Fewer sleep measurements were made than step measurements by both individuals, likely due to the need to remember to manually activate and deactivate the Fitbit One sleep timer before and after sleeping.

With over 1500 days of step counts available for both individuals, some clear differences are notable. For the teen, step counts significantly dropped over the 5 years ([Figure 1A](#), negative correlation of date versus steps $r = -0.517$, $P = 1.20 \times 10^{-107}$), whereas step counts only slightly dropped during the same period for the adult ([Figure 1B](#), negative correlation of date versus steps $r = -0.066$, $P = 0.005$). On average, the adult walked significantly more steps than the teen over the 5 years (adult mean 7757.2, standard deviation 2850.7; teen mean 6568.3, standard deviation 3685.9, t-test $P < 2.2 \times 10^{-16}$). Interestingly, both individuals walked significantly less on weekend days (Sundays and Saturdays) than on weekdays, but the difference was more pronounced in the teen ([Figure 1C and 1D](#), teen t-test $P < 2.2 \times 10^{-16}$, adult t-test $P = 0.006$).

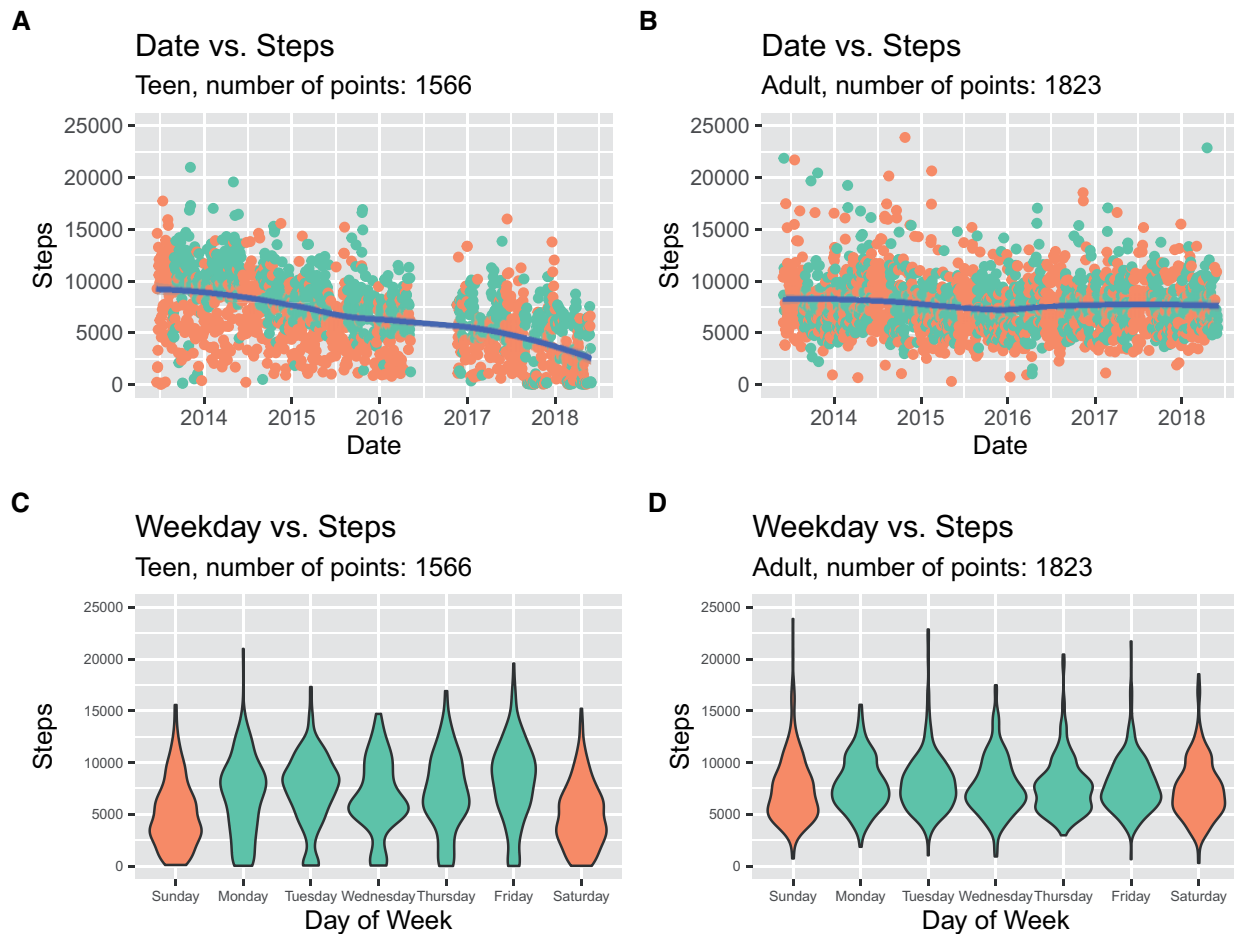


Figure 1. (A and B) Steps per day over time for the teenager and adult, respectively, with green representing school days and orange as nonschool days (ie, weekends and weeklong holidays). (C and D) Steps per day on each day of the week for the teenager and adult, respectively, with green representing weekdays and orange as weekends (Saturday and Sunday).

We further investigated the teen's step counts. Using 6 years of school calendars, we determined the specific dates of five yearly recurring holidays (1-week midwinter break in February, 1-week spring break in March or April, 10-week summer break from June through August, 1-week Thanksgiving break in November, and 2-week winter break from between December and January). Approximately 30% of the available step count measurements could be classified as occurring during one of these holidays (teen: 472 of 1566 measurements; adult: 571 of 1823 measurements). The teen walked significantly more on school days compared to nonschool days (combining holiday and weekend days, Figure 2A, 2105.9 more steps on average, t -test $P = 8.17 \times 10^{-31}$). Interestingly, the adult showed no significant difference in step counts between school days and nonschool days. The teen made the fewest steps in February and March compared to August through October (Figure 2B), and there was significant variability in the steps across the months (Chi-square test $P = 3.71 \times 10^{-67}$). To test the effect of seasonality, we fit a linear regression model on the teen's step counts, with parameters representing whether a day was a weekend, in one of the five holiday periods, the year of the study (first through fifth), and the month of the year. All of these parameters were highly significant in the fit regression model (Table 2).

On average, the teen walked 9103.1 steps per day during the first year of the study, and only 3646.8 steps per day during the final

year of the study, or a drop of 60%. The increasing heights for the growing teen were used to better understand the context for this marked drop in step counts. Fourteen height measurements were downloaded for the teen, with measurements available between ages 2 and 16 years. A cubic spline was then fit to these measurements, and a height of 144.9 cm was estimated for the teen on June 1, 2013, the starting date for this study. A height of 162.6 cm (measured close to the date) was used for May 31, 2018, the ending date for this analysis. The teen's height is estimated to have increased 17.7 cm (or 12.2%) during the analysis period of this study, and thus we estimate only a 12.2% increase in stride length over the course of the study.^{17,18}

Fewer days of sleep measurements were available for both individuals, but comparisons were still possible with over 800 nights of data available. The teen slept slightly less towards the end of the 5 years, compared to the start (Figure 3A, correlation of date versus minutes asleep $r = -0.10$, $P = 0.003$). The adult showed no significant change in sleep over the 5 years (Figure 3B, correlation of date versus minutes asleep $r = 0.036$, $P = 0.152$, not significant). Similar to the step counts, differences were observed on weekends. Both individuals slept significantly longer on nights when the morning fell on a Saturday or Sunday (weekend). The teen slept an average of 92.7 minutes longer in weekends (Figure 3C, green weekday mean 457.3, orange weekend mean 550.0, t -test $P = 7.23 \times 10^{-29}$)

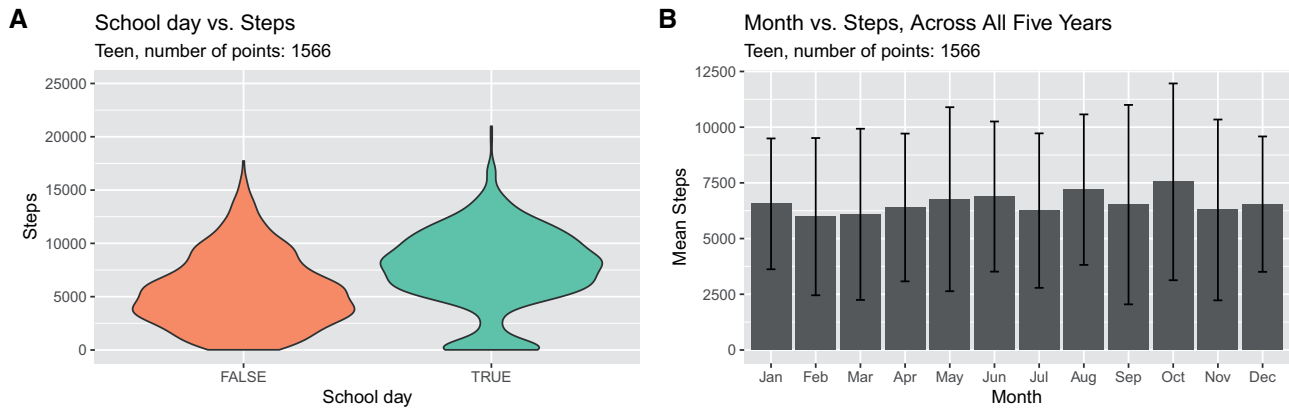


Figure 2. (A) Distribution of steps per day for the teenager on school days (green) and nonschool days (orange; weekends and weeklong holidays). (B) Average and standard deviation of teenager steps for each month of the year.

Table 2. Linear regression model fit on the 1566 step counts from the teen, with variables representing whether a day was a weekend, in one of the five holiday periods, the year of the study (first through fifth), and the month of the year

Variable in linear regression model	Coefficient	ANOVA <i>P</i> -value
Intercept	11 215.0	
Day is a weekend day	-2194.91	$<2.2 \times 10^{-16}$
Day during one of the five holiday periods	-996.75	$<2.2 \times 10^{-16}$
Every year of the study past the first year (first year 0, second year 1, ...)	-1299.89	1.953×10^{-10}
Month (1 for January, 12 for December)	-107.01	1.425×10^{-6}

whereas the adult slept 61 minutes longer (Figure 3D, green weekday mean 345.5, orange weekend mean 406.3, *t*-test $P=1.5 \times 10^{-36}$). Overall, the teen slept an average of 120.1 min longer per day than the adult.

Given the father and daughter are living as a family in the same home, we then compared step counts and sleeping on the same days. Surprisingly, the number of steps walked by the teen and adult were correlated (Figure 4A, $n=1589$ points, Pearson $r=0.2$, $P=4.92 \times 10^{-16}$). The step count correlation was even stronger when considering only the weekend days ($n=449$ points, Pearson $r=0.4$, $P=1.25 \times 10^{-18}$), suggesting coordinated walking behaviors on the weekend. Interestingly, the amount of sleep was also correlated between the father and daughter (Figure 4B, $n=707$ points, Pearson $r=0.23$, $P=1.32 \times 10^{-9}$), but much weaker when considering only the weekend days ($n=189$ points, Pearson $r=0.17$, $P=0.023$), suggesting the daughter’s and father’s sleep were less coordinated on the weekends. In general, both the teen and adult slept more and walked less on nonschool days (Figure 4A and B, in orange) than on school days (green).

DISCUSSION

We describe here a 5-year longitudinal case study of the use of a wearable fitness device in a teenage female, comparing her measurements to those of her adult father, who was using the same type of device during the same time period. This work shows that our hypothesis that long-term use of a wearable fitness device is possible, even by a pediatric-aged individual, and yields interesting and even actionable findings. To our knowledge, this is the longest reported

pediatric study involving a wearable fitness device, and the first to simultaneously involve a parent and child.

We describe four specific findings here. First, the teen appears to be generally walking less than the adult (who was purposefully trying to walk more for weight loss), and progressively walking less over the 5 years. Second, both the adult and teen walk significantly less on weekends and holidays. Third, the teen female sleeps more than the adult and has more variation in sleep, but both the teen and adult sleep more on weekends. Sleep differences between the teenager and the adult may have been due to travel by the adult and/or the fact that short naps are often not recorded by these devices, which need manual triggers to start the timer. Fourth, interestingly, the number of steps walked by the teen and adult and minutes slept by the teen and adult are correlated. The correlation in step counts may be due to common activities (eg, shopping) or longer walks (eg, hikes) performed together as a family. Similarly, sleep correlations were likely due to shared behavior: if the teen worked late to complete homework, one of the two parents often stayed awake with her.

Despite the obviously small sample size, it is still possible to draw some early conclusions to potentially inform recommendations for patients and families, pediatric care providers, schools, and wearable device manufacturers, summarized in Table 3. We noted several issues for wearable device use in pediatric age users and their families. The teenage female had a 7 month contiguous gap in measurements. For many years, there was no reminder or warning issued when measurements were not being synchronized from the device. Measurements will be lost if devices are not synchronized periodically. This could easily happen if the synchronization device (ie, a smartphone, tablet, or home computer) is upgraded or restored from a backup. For the Fitbit One used here, the on-device memory only stores 30 days of measurements.¹⁹ Users should ideally receive

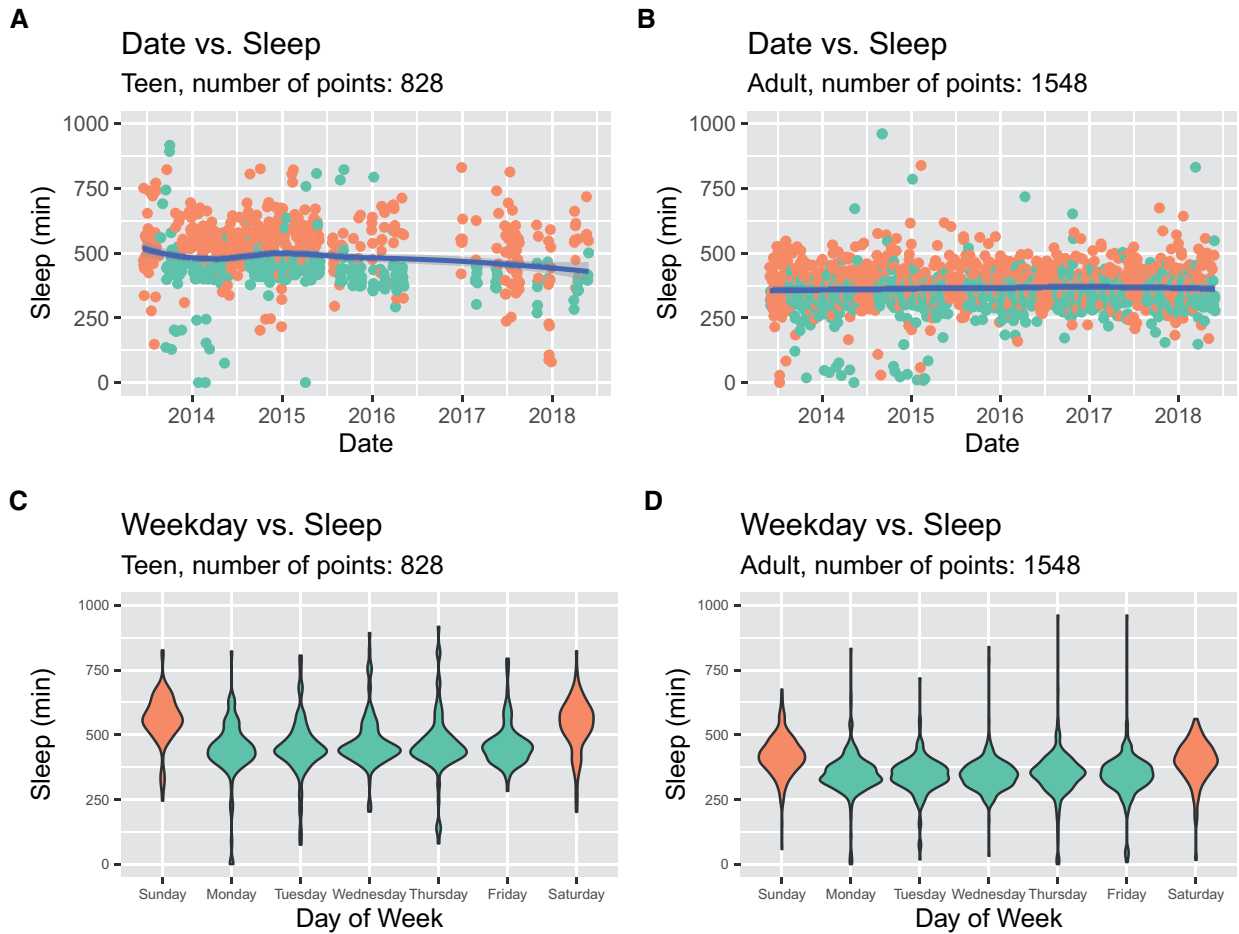


Figure 3. (A and B) Minutes asleep per day over time for the teenager and adult, respectively, with green representing school days and orange as nonschool days (ie, weekends and weeklong holidays). (C and D) Minutes asleep per day on each day of the week for the teenager and adult, respectively, with green representing weekdays and orange as weekends (Saturday and Sunday). Sleep data throughout this figure was plotted on the day of the individual's awakening.

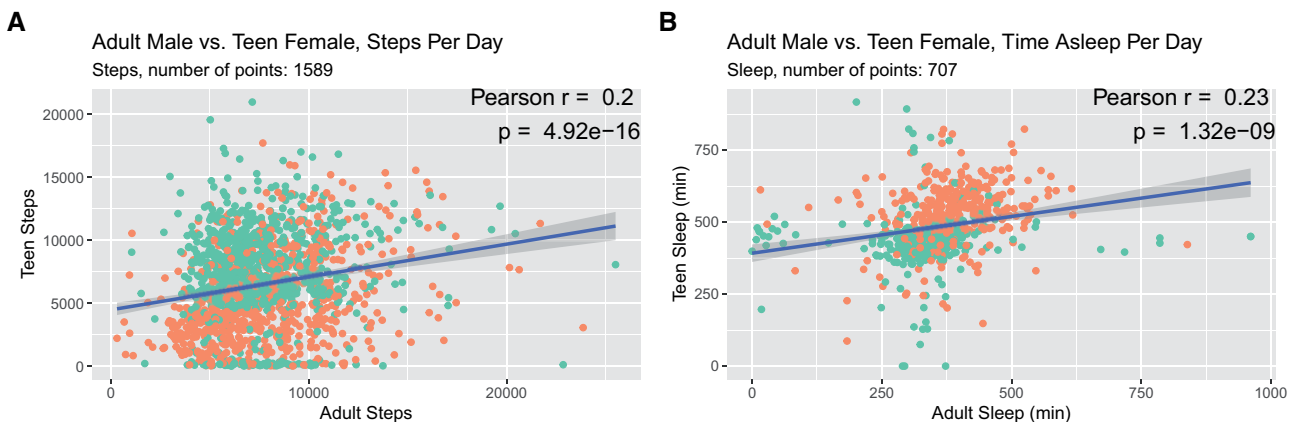


Figure 4. (A) Steps per day for the teenager against the number of steps on identical days for the adult, with green representing school days and orange as nonschool days. (B) Minutes asleep per night for the teenager against the minutes of sleep per night for the adult, on identical days, with green representing school days and orange as nonschool days.

a warning if device measurements have not been synchronized to their phones after several days. Fitbit reportedly made an improvement to address this problem in March 2018.²⁰ However, to our knowledge, parents still do not get notifications when their child's

device is not syncing. This should be addressed before long-term pediatric use is recommended.

Similarly, teens (or potentially even younger users) will need to remember to periodically charge the device. This habit is harder to

Table 3. Implications of the study for patients and families, pediatrics care providers, schools, and wearable device manufacturers

Constituency	Implications
Pediatric patients and families	<ul style="list-style-type: none"> • Parents will want to ensure device is synchronizing so that data is not lost • Children will need to be taught to remember to charge the device
Pediatric care providers	<ul style="list-style-type: none"> • Stride length will need to be adjusted as children grow taller • Nutritional settings (eg, daily calorie intake levels) in devices or their companion apps will need to be adjusted as children age • Adjustments could be made or verified during routine pediatric well child visits
Schools	<ul style="list-style-type: none"> • Future: periodic or continuous data feed from wearable fitness devices directly into the pediatrics office • Design classroom schedules that increase walking activity during the day • Ensure student body physical activity by monitoring devices (taking into account privacy concerns)
Wearable device manufacturers	<ul style="list-style-type: none"> • Tailor digital motivating factors for teens • Algorithms should understand teenagers' unique schedules with periodic bursts of activity (eg, sports) surrounded by inactivity (eg, exams) • Gamification and competition among peers

adopt, as these devices are worn while sleeping, which is when other devices (such as phones) are typically charged. Alternative times for consistent charging will need to be explored (eg, while bathing). If the teen has different devices to track steps and sleep, each device will need to be charged when it is not in use. While some of these learnings are specific to the Fitbit products used here, we do believe the principles would be important and generalizable to users of and studies involving wearable fitness devices from other companies, such as Garmin or Apple.

We find three issues related to the use of wearable fitness devices for actual pediatric care. While we have shown that device use for more than 5 years is possible, we note special efforts that would need to be taken to enhance continued accurate use in the pediatric care setting. First, the number of steps needed to traverse a distance obviously depends on the stride length. If an exact stride length is not entered, Fitbit estimates the length given the sex and height of the user²¹ using a proprietary formula, which is multiplied by the step count to estimate the distance walked. However, teenagers gain significant height as they go through puberty, and if the stride length is not periodically readjusted, a shorter total distance walked may be wrongly estimated. For example, an average 10-year-old female at the 50%ile for height at 138 cm would have an estimated stride length of 57 cm, while the same female 5 years later at the 50%ile for height at 162 cm would have an estimated stride length of 67 cm or 17.5% longer.^{17,18,22} Thus, 5000 steps walked at age 15 years cover 2.08 miles, whereas 5000 steps for a 10-year-old would cover 1.77 miles. However, in this particular study, we show that the 60% decrease in step counts seen over the 5 years greatly exceeds the teen's 12.2% estimated increase in stride length.

Given that teenager heights change over time, if the teen does not know (or remember) to periodically change their height in the settings, then the Fitbit may miscalculate the number of steps and thus distance walked. Similarly, the nutritional needs of teenagers change over time, and if teens are using calorie counting or diet-related features, the nutritional goals will need to be periodically adjusted to keep the advice safe and accurate. The device itself should periodically prompt for such updates, perhaps on the teen's birthday.

In addition, if teenagers are visiting their primary care physician for regular preventative health, the physician could remind or offer to update these body-related settings. But currently, most pediatricians do not have any easy access to the data from the wearable fitness devices of their patients. Ideally, they would have the data and

tools to help provide targeted fitness advice (eg, make sure to walk more on weekends), beyond just adjusting the settings.

In the future, it could be possible to establish a more frequent (ie, daily or weekly) data feed from these wearable fitness devices directly into the pediatrics office. This type of data flow would require a standard to represent these measurements, and the HL7 Fast Health Interoperability Resources (FHIR) standard has been shown to be sufficient for wearable fitness tracking data.²³ A periodic data transfer such as this would offer several advantages towards the standard approach a pediatrician might currently use to gather information on physical exercise; frequent and timely measurement data might be more accurate than questionnaires or recall. However, pediatrics clinics would need computational tools in order to receive these measurements, provide data visualizations and analytics for population health management, and methods for decision support, for the clinician to be able to remotely promote improved physical activity.

In this study, we noted the teenager completed fewer steps than the adult. This may be due to the adult's deliberate effort to walk at his workplace, whereas the teenager sat in the classroom for most of the day and only walked between classes. This is likely due to decreasing requirements for physical education in high school as compared to middle school, and compared to previous generations of schoolchildren.²⁴ We did note both individuals walked more during these school/workdays compared to weekend days or holidays. Employers and schools could design layouts that enhance walking activity during the day, especially if physical education requirements are minimal. School course schedules are difficult to arrange logistically, but consecutive classes could be separated away from each other on campus, thereby requiring students to walk more between classes. In the workplace, conference calls via mobile devices could be encouraged, thus potentially enabling walking during the calls. Whether in school or the workplace, wearable fitness devices could help those in leadership positions at these settings ensure their target populations are getting enough physical activity during weekdays, but privacy and other concerns would also need to be addressed.

Companies making wearable fitness devices should tailor their digital motivating factors for teens. Smartphone-based reminders to exercise should recognize teenagers' unique schedules, with bursts of activity potentially clustered around sports schedules and with periods of less exercise during exam periods. Gamification and competition among peers might lead to more physical activity.

Anecdotally, the teen started to use the Fitbit One device because she saw her father, the adult in this study, using his device, and because she wanted to be healthier. The prime reason she used the device was to measure her sleep each night, as she could not easily estimate it just by looking at a clock. She could also look at the Fitbit app to see how often she woke up during the night and judge her sleep quality. Instead of relying on qualitative assessments of her lifestyle, she could get quantitative assessments for both her exercise and sleep. As a separate reason, she also used her device because she could see her step count change over time. For example, she could see when she was walking fewer steps per day in middle and high school than she had walked in elementary school. However, the step count was not the primary motivator for the continued use of the device. She continued to use the device because it was easy to integrate into her lifestyle and did not disrupt her daily routine; for example, she developed a habit of charging the device when bathing.

There are several limitations to this study. Obviously, only two individuals were studied here, though others have proposed the importance of n-of-1 trials for precision medicine.²⁵ Others have already been listed above, such as losing some data due to the lack of any device-issued warning. Fewer days of sleep measurements were made, compared to step counts. The Fitbit One needs to be worn while in bed and requires a button to be manually held down as one is ready to sleep. The same button must then be held down right after waking up to stop the timer. It was common for both individuals to forget to perform either of these two manual steps. An accurate, automated way to determine sleep start and end would be ideal. It is possible that some of these missing measurements might have biased the analysis if the data were not missing at random.

CONCLUSION

Regardless of the limitations, this pilot case study shows that wearable fitness devices can be useful in tracking the long-term health of both adults and teenagers. Future work should be directed around prospective studies with larger groups of teenagers and adults, potentially using more modern measurement tools, including measurements of diet, mood, and behavior, and assessing these in reference to health outcomes. We hope to see more longer-term studies using these devices.

SUPPLEMENTARY MATERIAL

Supplementary material is available at *Journal of the American Medical Informatics Association* online.

CONTRIBUTORS

Conceptualization: K.D.B., A.J.B., and M.P.S.; Software: A.J.B.; Analysis: K.D.B., A.B., and X.L.; Resources: M.P.S.; Writing: K.D.B., A.J.B., X.L., and M.P.S.; Visualization: K.D.B. and A.J.B.; Supervision: X.L. and M.P.S.

ACKNOWLEDGMENTS

We would like to thank The Harker School for providing the Minitab Express software that was used in analyzing the data. We would also like to thank Chris Spenner (Harker School) for research mentorship and Dr Tarangini Deshpande (NuMedii, Inc.) for comments on the manuscript.

DATA AVAILABILITY

The sleep and step count data for the adult and teen used in this analysis are publicly available through Dryad: <https://doi.org/10.7727/Q6NG4NWT>.

FUNDING

This research received no specific grant from any funding agency in the public, commercial or not-for-profit sectors.

CONFLICT OF INTEREST STATEMENT

Michael Snyder is a cofounder and is on the scientific advisory board of Personalis, Filtircine, SensOmics, Qbio, January, Mirvie, Orallome, and Proteus. He is also on the scientific advisory board of Genapsys and Jupiter. Atul Butte is a cofounder and consultant to Personalis and NuMedii; consultant to Samsung, Mango Tree Corporation, and in the recent past, 10x Genomics, Helix, Pathway Genomics, and Verinata (Illumina); has served on paid advisory panels or boards for Geisinger Health, Regenstrief Institute, Gerson Lehman Group, AlphaSights, Covance, Novartis, Genentech, Merck, and Roche; is a shareholder in Personalis and NuMedii; is a minor shareholder in Apple, Facebook, Alphabet (Google), Microsoft, Amazon, Snap, 10x Genomics, Illumina, CVS, Nuna Health, Assay Depot, Vet24seven, Regeneron, Sanofi, Royalty Pharma, AstraZeneca, Moderna, Biogen, Paraxel, and Sutro, and several other nonhealth related companies and mutual funds; and has received honoraria and travel reimbursement for invited talks from Johnson and Johnson, Roche, Genentech, Pfizer, Merck, Lilly, Takeda, Varian, Mars, Siemens, Optum, Abbott, Celgene, AstraZeneca, AbbVie, Westat, and many academic institutions, medical or disease specific foundations and associations, and health systems. Atul Butte receives royalty payments through Stanford University, for several patents and other disclosures licensed to NuMedii and Personalis. Atul Butte's research has been funded by NIH, Northrup Grumman (as the prime on an NIH contract), Genentech, Johnson and Johnson, FDA, Robert Wood Johnson Foundation, Leon Lowenstein Foundation, Intervallen Foundation, Priscilla Chan and Mark Zuckerberg, the Barbara and Gerson Bakar Foundation, and in the recent past, the March of Dimes, Juvenile Diabetes Research Foundation, California Governor's Office of Planning and Research, California Institute for Regenerative Medicine, L'Oreal, and Progenity. The other authors declare no competing interests.

REFERENCES

1. McCarthy J. One in Five U.S. Adults Use Health Apps, Wearable Trackers. *Gallup* 2019. <https://news.gallup.com/poll/269096/one-five-adults-health-apps-wearable-trackers.aspx> Accessed July 12, 2021.
2. Pressman A. Apple Took a Commanding Lead In Wearables In the Fourth Quarter, As Fitbit Slipped. *Fortune* 2018. <https://fortune.com/2018/03/01/apple-watch-fitbit-wearable-ranking/> Accessed July 12, 2021.
3. Fitbit. Fitbit Reports Third Quarter Results for the Three Months Ended September 28, 2019. <https://investor.fitbit.com/press-releases/press-release-details/2019/Fitbit-Reports-Third-Quarter-Results-for-the-Three-Months-Ended-September-28-2019/default.aspx>; 2019. Accessed July 12, 2021.
4. Gresham G, *et al.* Wearable activity monitors to assess performance status and predict clinical outcomes in advanced cancer patients. *Npj Digit Med* 2018; 1: 27.

5. Speier W, Dzibur E, Zide M, *et al.* Evaluating utility and compliance in a patient-based eHealth study using continuous-time heart rate and activity trackers. *J Am Med Inform Assoc* 2018; 25 (10): 1386–91.
6. Li X, Dunn J, Salins D, *et al.* Digital health: tracking physiomes and activity using wearable biosensors reveals useful health-related information. *PLoS Biol* 2017; 15 (1): e2001402.
7. Rose SMSF, Contrepolis K, Monaghetti KJ, *et al.* A longitudinal big data approach for precision health. *Nat Med* 2019; 25 (5): 792–804.
8. Jakicic JM, Davis KK, Rogers RJ, *et al.* Effect of wearable technology combined with a lifestyle intervention on long-term weight loss: the IDEA randomized clinical trial. *JAMA* 2016; 316 (11): 1161.
9. Fitbit. National Institutes of Health Launches Fitbit Project as First Digital Health Technology Initiative in Landmark All of Us Research Program. <https://investor.fitbit.com/press-releases/press-release-details/2019/National-Institutes-of-Health-Launches-Fitbit-Project-as-First-Digital-Health-Technology-Initiative-in-Landmark-All-of-Us-Research-Program/default.aspx>; 2019. Accessed July 12, 2021.
10. Fitbit. Fitbit Launches Fitbit Ace, Inspires Healthy Habits for Kids and Makes Fitness Fun for the Whole Family. <https://investor.fitbit.com/press-releases/press-release-details/2018/Fitbit-Launches-Fitbit-Ace-Inspires-Healthy-Habits-for-Kids-and-Makes-Fitness-Fun-for-the-Whole-Family/default.aspx>; 2018. Accessed July 12, 2021.
11. Lobelo F, Muth ND, Hanson S, *et al.*; Council on Sports Medicine and Fitness. Physical activity assessment and counseling in pediatric clinical settings. *Pediatrics* 2020; 145 (3): e20193992.
12. American Academy of Pediatrics. *Bright Futures: Guidelines for Health Supervision of Infants, Children, and Adolescents: pocket Guide*. Elk Grove Village, IL: American Academy of Pediatrics; 2017.
13. Bian J, Guo Y, Xie M, *et al.* Exploring the association between self-reported asthma impact and fitbit-derived sleep quality and physical activity measures in adolescents. *JMIR MHealth UHealth* 2017; 5 (7): e105.
14. Voss C, Gardner RF, Dean PH, Harris KC. Validity of commercial activity trackers in children with congenital heart disease. *Can J Cardiol* 2017; 33 (6): 799–805.
15. Miropolsky EM, Scott Baker K, Abbey-Lambertz M, *et al.* Participant perceptions on a Fitbit and Facebook intervention for young adult cancer survivors: a qualitative study. *J Adolesc Young Adult Oncol* 2020; 9 (3): 410–7.
16. Kerner C, Goodyear VA. The motivational impact of wearable healthy lifestyle technologies: a self-determination perspective on Fitbits with adolescents. *Am J Health Educ* 2017; 48 (5): 287–97.
17. Grieve DW, Gear RJ. The relationships between length of stride, step frequency, time of swing and speed of walking for children and adults. *Ergonomics* 1966; 9 (5): 379–99.
18. Bumgardner W. How to Set Your Pedometer or Fitness Band for Better Accuracy. *VeryWell Fit* 2020. <https://www.verywellfit.com/set-pedometer-better-accuracy-3432895> Accessed July 12, 2021.
19. Fitbit. *Fitbit One Product Manual*. 2009.
20. Fitbit. Sync Service Persistent Notification. <https://community.fitbit.com/t5/Ionic/Sync-Service-Persistent-Notification/td-p/2612466>; 2018. Accessed July 12, 2021.
21. Fitbit. How Does My Fitbit Device Calculate My Daily Activity? https://help.fitbit.com/articles/en_US/Help_article/1141.htm Accessed July 12, 2021.
22. Centers for Disease Control and Prevention & National Center for Health Statistics. *CDC Growth Charts* 2000; <http://www.cdc.gov/growthcharts/> Accessed July 12, 2021.
23. Saripalle RK. Leveraging FHIR to integrate activity data with electronic health record. *Health Technol* 2020; 10 (1): 341–52.
24. Harold W, Kohl III, Cook HD. Committee on Physical Activity and Physical Education in the School Environment, Food and Nutrition Board, & Institute of Medicine. *Status and Trends of Physical Activity Behaviors and Related School Policies. Educating the Student Body: Taking Physical Activity and Physical Education to School* (National Academies Press (US), 2013).
25. Lillie EO, Patay B, Diamant J, *et al.* The n-of-1 clinical trial: the ultimate strategy for individualizing medicine? *Per Med* 2011; 8 (2): 161–73.